



Count on it.

Form No. 3395-248 Rev C

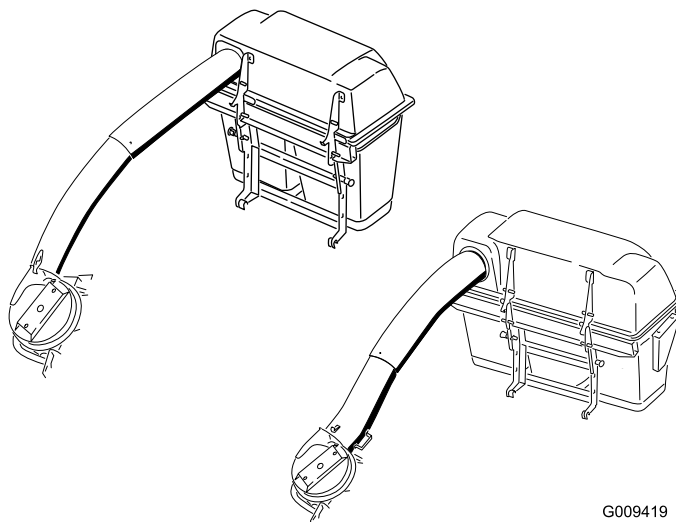
Operator's Manual

48in and 52in E-Z Vac Twin Bagging System or 60in and 72in E-Z Vac Triple Bagging System Z Master G3 Mower

Model No. 78562—Serial No. 290000001 and Up

Model No. 78563—Serial No. 290000001 and Up

Model No. 78564—Serial No. 290000001 and Up



G009419



This product complies with all relevant European directives. For details, please see the Declaration of Incorporation (DOI) at the back of this publication.

Introduction

Read this information carefully to learn how to operate and maintain your product properly and to avoid injury and product damage. You are responsible for operating the product properly and safely.

You may contact Toro directly at www.Toro.com for product safety and operation training materials, accessory information, help finding a dealer, or to register your product.

Whenever you need service, genuine Toro parts, or additional information, contact an Authorized Service Dealer or Toro Customer Service and have the model and serial numbers of your product ready. [Figure 1](#), [Figure 2](#) and [Figure 3](#) identifies the location of the model and serial numbers on the product. Write the numbers in the space provided.

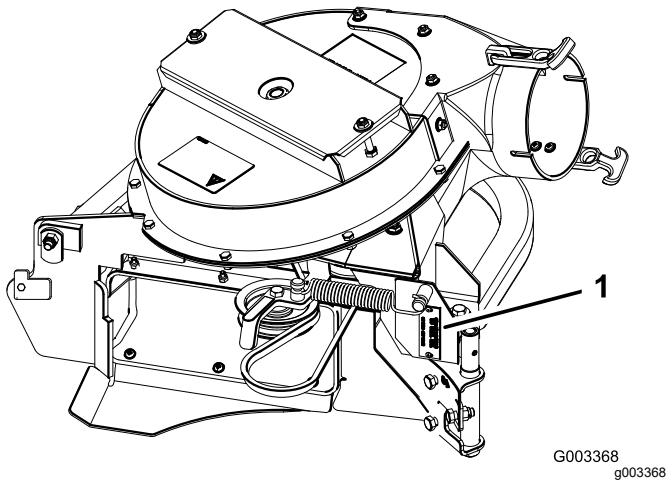


Figure 1

1. Blower model and serial number location

Model No. _____
Serial No. _____

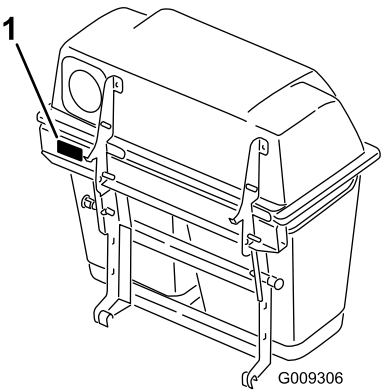


Figure 2

48- and 52-inch bagger serial number

1. Bagger model and serial number location

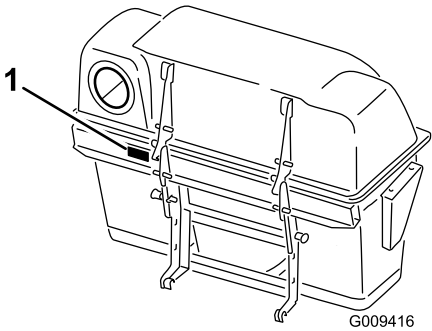


Figure 3

60- and 72-inch bagger serial number

1. Bagger model and serial number location

Model No. _____
Serial No. _____

This manual identifies potential hazards and has safety messages identified by the safety alert symbol ([Figure 4](#)), which signals a hazard that may cause serious injury or death if you do not follow the recommended precautions.



Figure 4

1. Safety alert symbol

This manual uses 2 words to highlight information. **Important** calls attention to special mechanical information and **Note** emphasizes general information worthy of special attention.

Contents

Safety	3
Safety and Instructional Decals	4
Setup	5
1 Preparing the Machine	6
2 Installing the Side Bumpers.....	6
3 Installing the Bagger Mounting Brackets.....	7
4 Installing the Hood Assembly and Bags.....	7
5 Installing the Muffler Deflector	10
6 Routing the Blower Belt into the Blower Assembly	10
7 Installing the Blower Assembly.....	11
8 Installing the Discharge Tubes	13
9 Installing the Belt Cover	17
10 Installing the Weights	18
11 Installing the Bumpers.....	20
12 Adjusting the Parking Brake	20
13 Checking the Tire Pressure	21
Operation	21
Positioning the Adjustable Baffle.....	22
Emptying the Grass Bags	22
Clearing Obstructions from the Bagger System.....	22
Removing the Bagger	23
Using the Grass Deflector.....	23
Transporting the Machine	23
Operating Tips	23
Maintenance	25
Recommended Maintenance Schedule(s)	25
Cleaning the Hood Screen	25
Cleaning the Bagger and Bags	25
Inspecting the Blower Belt	25
Replacing the Blower Belt for 60- and 72-inch Machines	25
Replacing the Blower Belt for 48- and 52-inch Machines	26
Checking and Adjusting the Blower Latch	27
Greasing the Idler Arm	27
Inspecting the Bagger.....	28
Inspecting the Mower Blades	28
Installing the Mower Blades	28
Replacing the Grass Deflector	28
Storage	29
Troubleshooting	30

Safety

The following list contains safety information specific to Toro products and other safety information you must know.

- Become familiar with the safe operation of the equipment, with the operator controls, and safety signs.
- Use extra care with grass catchers or other attachments. These can change the operating characteristics and the stability of the machine.
- Follow the manufacturer's recommendations for adding or removing wheel weights or counterweights to improve stability.
- Do not use a grass catcher on steep slopes. A heavy grass catcher could cause loss of control or overturn the machine.
- Slow down and use extra care on hillsides. Be sure to travel in the recommended direction on hillsides. Turf conditions can affect the stability of the machine. Use extreme caution while operating near drop-offs.
- Keep all movement on slopes slow and gradual. Do not make sudden changes in speed, directions or turning.
- The grass catcher can obstruct the view to the rear. Use extra care when operating in reverse.
- Use care when loading or unloading the machine into a trailer or truck.
- Never operate with the discharge deflector raised, removed or altered, unless using a grass catcher.
- Keep hands and feet away from moving parts. Do not make adjustments with the engine running.
- Stop on level ground, disengage drives, chock or block wheels, shut off engine before leaving the operator's position for any reason including emptying the grass catcher or unclogging the chute.
- If you remove the grass catcher, be sure to install any discharge deflector or guard that might have been removed to install the grass catcher. Do not operate the machine without either the entire grass catcher or the grass deflector in place.
- Stop the engine before removing the grass catcher or unclogging the chute.
- Do not leave grass in grass catcher for extended periods of time.
- Grass catcher components are subject to wear, damage and deterioration, which could expose moving parts or allow objects to be thrown. Frequently check components and replace with manufacturer's recommended parts, when necessary.

Safety and Instructional Decals



Safety decals and instructions are easily visible to the operator and are located near any area of potential danger. Replace any decal that is damaged or lost.



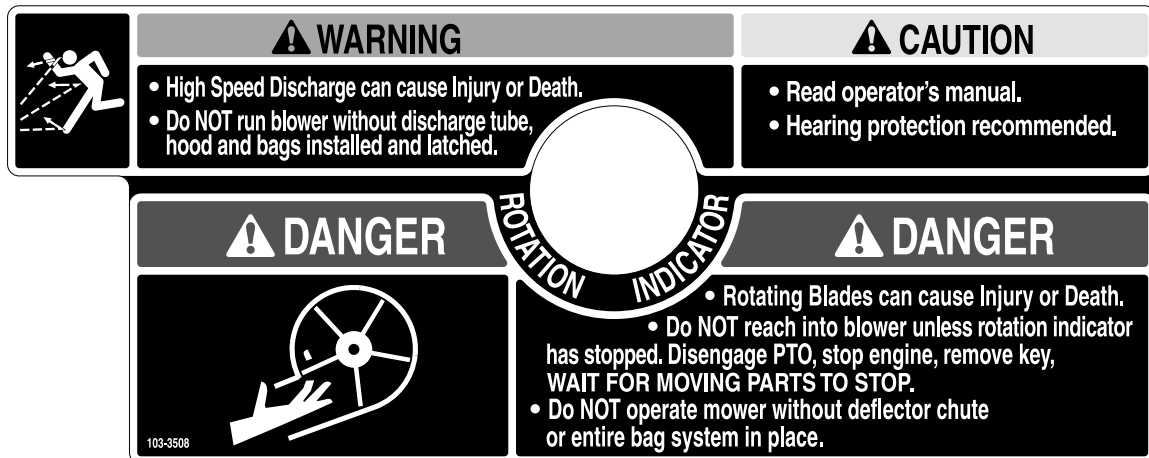
1-653558

decal1-653558



98-5954

decal98-5954



103-3508

decal103-3508



106-0871

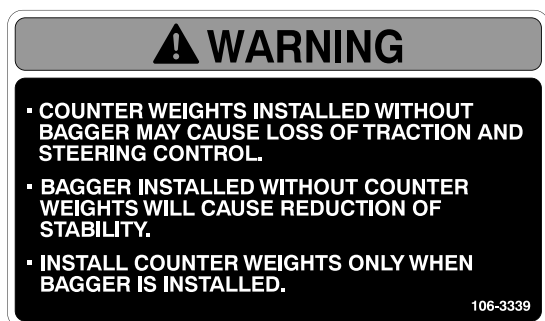
decal106-0871



106-5517

decal106-5517

1. Warning—do not touch the hot surface.



106-3339

decal106-3339

Setup

Loose Parts

Use the chart below to verify that all parts have been shipped.

Procedure	Description	Qty.	Use
1	No parts required	–	Prepare the machine.
2	Left bumper Right bumper Carriage bolt (3/8 x 1-1/4 inches) Flange nut (3/8 inch)	1 1 2 6	Install the side bumpers.
3	Upper mounting bracket Lower mounting bracket Carriage bolt (3/8 x 1-1/4 inches) Carriage bolt (1/2 x 2–1/2 inches) Flange nut (3/8 inch) Flange nut (1/2 inch)	1 1 4 2 4 2	Install the bagger mounting brackets.
4	Hood assembly Bag (48-inch and 52-inch decks) Bag (60-inch and 72-inch decks) Pin and hairpin-cotter assembly	1 2 3 2	Install the hood assembly and bags.
5	Muffler deflector Flange nut (3/8 inch) Carriage bolt (3/8 x 1-1/4 inches)	1 2 2	Install the muffler deflector.
6	Blower belt (from Blower and Drive Kit)	1	Route the blower belt into the blower assembly.
7	Blower assembly (from the Blower and Drive Kit) Spring (from the Blower and Drive Kit)	1 1	Install the blower assembly.
8	Upper tube Lower tube Bolt (#10 x 3/4 inches) Locknut (#10) Washer (7/32 inch)	1 1 3 3 3	Install the discharge tubes.
9	Belt cover (from Blower and Drive Kit)	1	Install the belt cover.
10	Caster weight (if needed) Clevis pin Hairpin cotter Lock washer (3/8 inch) Weight-mount bracket Bolt (3/8 x 1-1/2 inches) Flat washer (3/8 inch) Carriage bolt (5/16 x 3/4 inch) Flange nut (5/16 inch) Front weight (48-inch, 52-inch, and 60-inch decks) Front weight (72-inch decks)	2 2 2 6 1 6 6 3 3 3 1	Install the weights.

Procedure	Description	Qty.	Use
11	Bumper Spacer Locknut (5/16 inch)	2 2 2	Install the bumpers (for machines with MyRide™ suspension system).
12	No parts required	–	Adjust the parking brake.
13	No parts required	–	Check the tire pressure.

Important: Do not use drive or caster Tweels with this attachment. If the machine is equipped with drive or caster Tweels, replace them with factory pneumatic drive tires or factory pneumatic or semi-pneumatic caster tires.

Note: Determine the left and right sides of the machine from the normal operating position.

1

Preparing the Machine

No Parts Required

Procedure

Perform the following procedure to prepare the machine for attaching the blower and finishing kit.

1. Disengage the PTO, move the motion-control levers to the NEUTRAL-LOCKED position and set the parking brake.
2. Stop the engine, remove the key, and wait for all moving parts to stop before leaving the operating position.
3. Repair all bent or damaged areas of machine deck and replace any missing parts.
4. Clean the machine of any debris on the machine deck or rear part of the machine to ease installation.

2

Installing the Side Bumpers

Parts needed for this procedure:

1	Left bumper
1	Right bumper
2	Carriage bolt (3/8 x 1-1/4 inches)
6	Flange nut (3/8 inch)

Procedure

1. Remove the nuts and bolts holding the side bumpers to the machine ([Figure 5](#)).
- Note:** Discard all nuts and only the 1 bolt removed from each side.
2. Install the new left and right side bumpers with 2 carriage bolts (3/8 x 1-1/4 inches), 4 previously removed carriage bolts, and 6 flange nuts (3/8 inch) as shown in [Figure 5](#).

3

Installing the Bagger Mounting Brackets

Parts needed for this procedure:

1	Upper mounting bracket
1	Lower mounting bracket
4	Carriage bolt (3/8 x 1-1/4 inches)
2	Carriage bolt (1/2 x 2-1/2 inches)
4	Flange nut (3/8 inch)
2	Flange nut (1/2 inch)

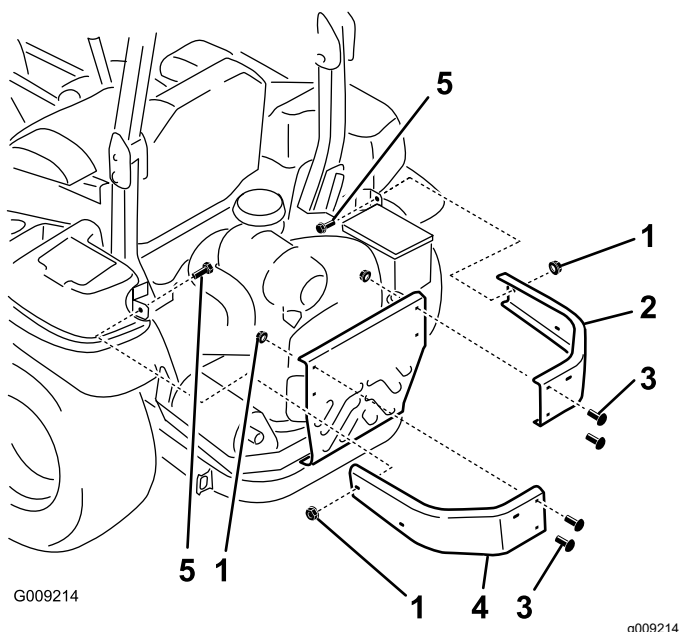


Figure 5

1. Flange nut (3/8 inch)
2. Right bumper
3. Use existing bolts
4. Left bumper
5. Bolt (3/8 x 1-1/4 inches)

Procedure

1. Install the lower mounting bracket to the machine frame with 4 carriage bolts (3/8 x 1-1/4 inches) and 4 flange nuts (3/8 inch) as shown in [Figure 6](#).
2. Install the upper mounting bracket to the left and right side bumpers with 2 carriage bolts (1/2 x 2-1/2 inches) and 2 flange nuts (1/2 inch) as shown in [Figure 6](#).

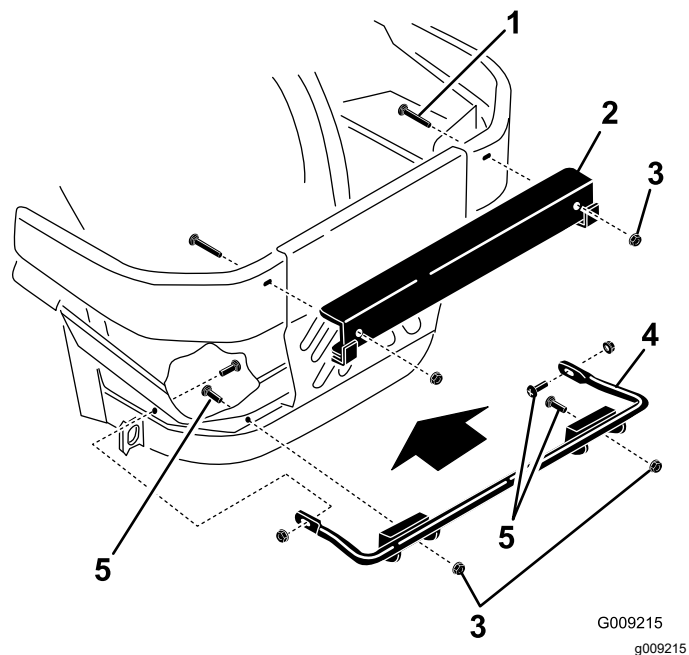


Figure 6

1. Carriage bolt (1/2 x 2-1/2 inches)
2. Upper mounting bracket
3. Flange nut (1/2 inch)
4. Lower mounting bracket
5. Carriage bolt (3/8 x 1-1/4 inches)
6. Flange nut (3/8 inch)

4

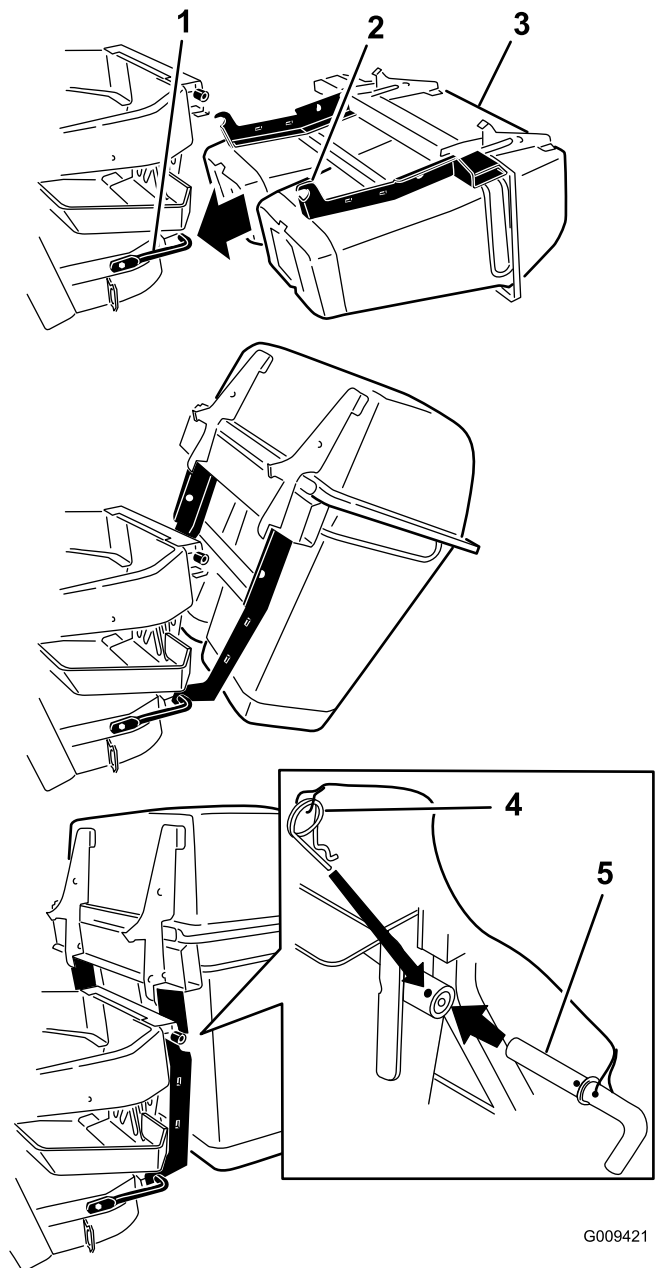
Installing the Hood Assembly and Bags

Parts needed for this procedure:

1	Hood assembly
2	Bag (48-inch and 52-inch decks)
3	Bag (60-inch and 72-inch decks)
2	Pin and hairpin-cotter assembly

Procedure

1. Position the hood assembly on its back.
2. Slide hooks onto the lower mounting bracket (Figure 7).
3. Rotate the hood assembly up on the lower bagger mounting bracket (Figure 7).
4. Align the hole in the bagger with the upper mounting bracket (Figure 7).
5. Install the pin and secure it with the hairpin cotter on both sides (Figure 7).



G009421

g009421

Figure 7

1. Lower mounting bracket
2. Hook
3. Hood assembly
4. Hairpin cotter connected to lanyard
5. Pin connected to lanyard

6. Install the bag tab into the notch in the hood assembly (Figure 8 or Figure 9).

Note: Do this for all the bags.

Note: The bags will rest on the bagger frame.

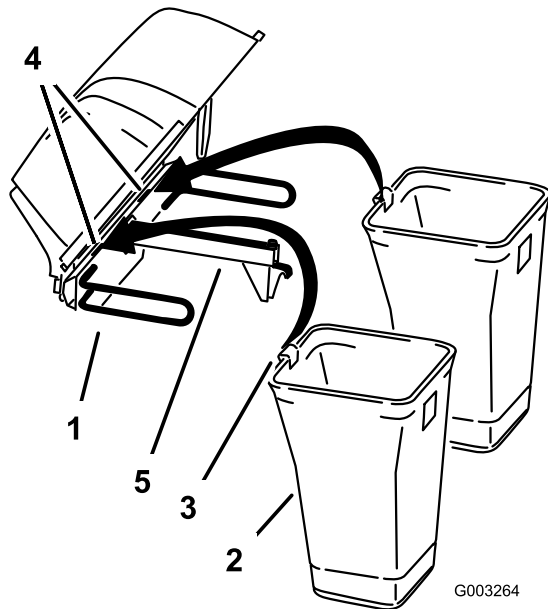


Figure 8

Twin bagger shown

- | | |
|------------------|-----------------|
| 1. Hood assembly | 4. Notch |
| 2. Bag | 5. Bagger frame |
| 3. Bag tab | |

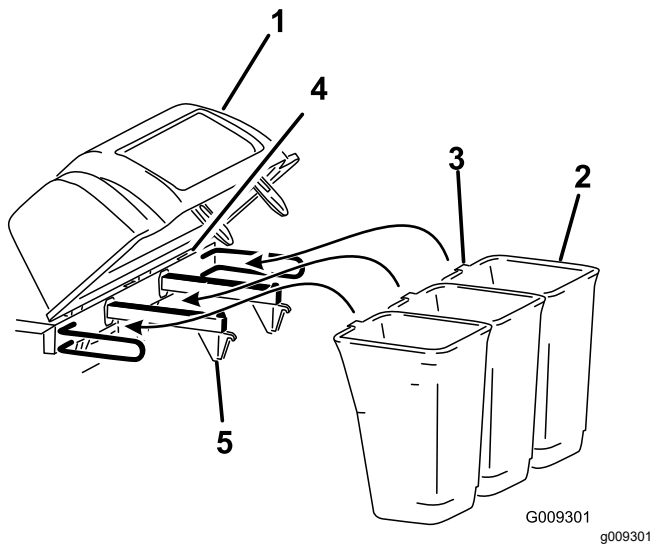


Figure 9

Triple bagger shown

- | | |
|------------------|-----------------|
| 1. Hood assembly | 4. Notch |
| 2. Bag | 5. Bagger frame |
| 3. Bag tab | |

7. Lower the bagger hood over the bags (Figure 10 or Figure 11).

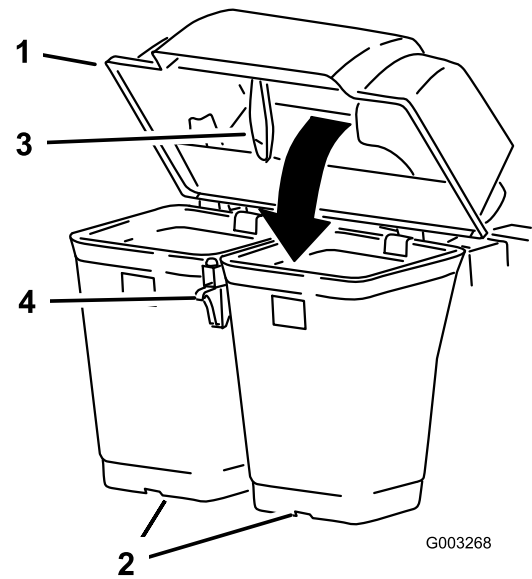


Figure 10

Twin bagger shown

- | | |
|---------|-----------------|
| 1. Hood | 3. Bagger latch |
| 2. Bag | 4. Latch hook |

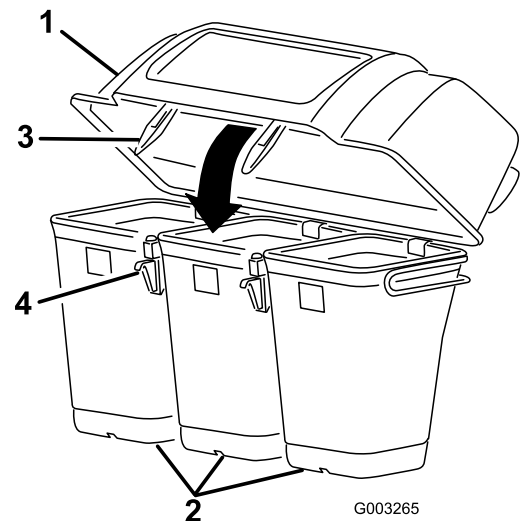


Figure 11

Triple bagger shown

- | | |
|---------|-----------------|
| 1. Hood | 3. Bagger latch |
| 2. Bag | 4. Latch hook |

8. Position the bagger latch under the latch hook (Figure 12).
9. Push down on bagger latch until it locks into place (Figure 12).

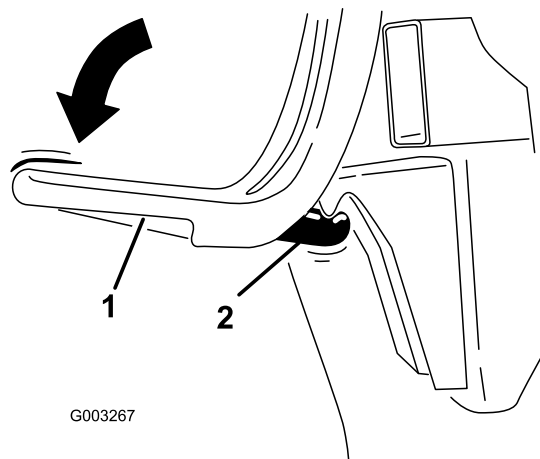


Figure 12

1. Bagger latch
2. Latch hook

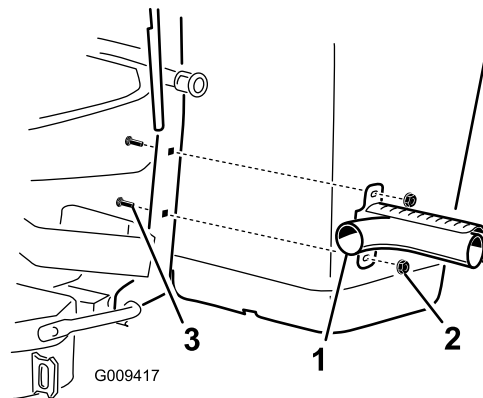


Figure 13

1. Muffler deflector
2. Flange nut (3/8 inch)
3. Carriage bolt (3/8 x 1-1/4 inches)

5

Installing the Muffler Deflector

Parts needed for this procedure:

1	Muffler deflector
2	Flange nut (3/8 inch)
2	Carriage bolt (3/8 x 1-1/4 inches)

Procedure

Install the muffler deflector to the side of the bagger frame (Figure 13).

Note: Ensure the muffler deflector is positioned over the tail pipe of the muffler.

6

Routing the Blower Belt into the Blower Assembly

Parts needed for this procedure:

1	Blower belt (from Blower and Drive Kit)
---	---

Procedure

1. For 60- and 72-inch machine decks, install the belt around the blower pulley (Figure 14).

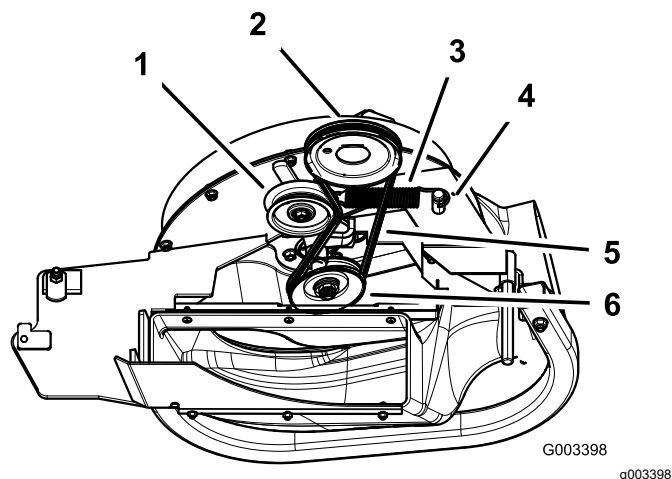


Figure 14

Blower for 60- and 72-inch machines

1. Idler pulley
2. Machine deck pulley
3. Spring
4. Spring peg
5. Belt
6. Blower pulley

2. For 48- and 52-inch machines, loosen the belt-guide bolt ([Figure 15](#)).
3. Install the belt around the blower pulley and fixed-idler pulley ([Figure 15](#)).
4. Tighten the belt-guide bolt.

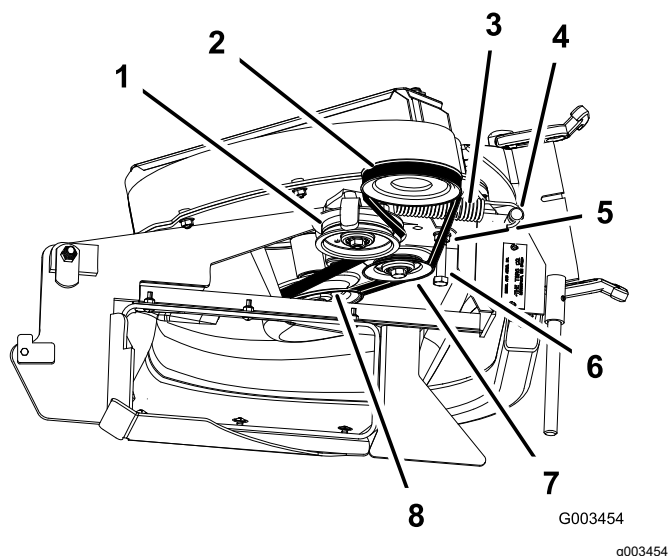


Figure 15

- | | |
|------------------------|-----------------------|
| 1. Idler pulley | 5. Belt |
| 2. Machine deck pulley | 6. Belt-guide bolt |
| 3. Spring | 7. Fixed-idler pulley |
| 4. Spring peg | 8. Blower pulley |

7

Installing the Blower Assembly

Parts needed for this procedure:

1	Blower assembly (from the Blower and Drive Kit)
1	Spring (from the Blower and Drive Kit)

Procedure

⚠ WARNING

An uncovered discharge opening could allow the lawn mower to throw objects at you or bystanders, resulting in serious injury. Also, contact with the blade could occur.

- **Never operate the lawn mower unless you install a cover plate, a mulch plate, or a grass chute and catcher.**
- **Make sure that the grass deflector is installed when the grass chute and catcher are removed.**

1. Remove the side discharge chute from the mower deck ([Figure 16](#)).

Note: Save all the hardware and the side discharge chute. Install the side discharge chute when the bagger and blower are removed.

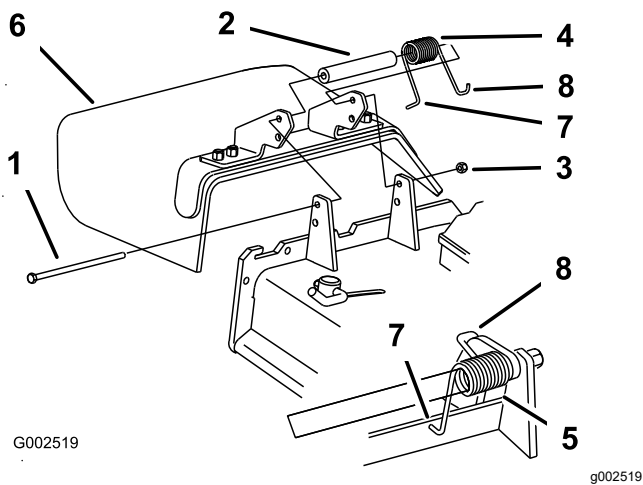


Figure 16

- | | |
|------------|--|
| 1. Bolt | 5. Spring installed |
| 2. Spacer | 6. Grass deflector |
| 3. Locknut | 7. L end of spring (place behind the deck edge before installing the bolt) |
| 4. Spring | 8. J-hook end of spring |

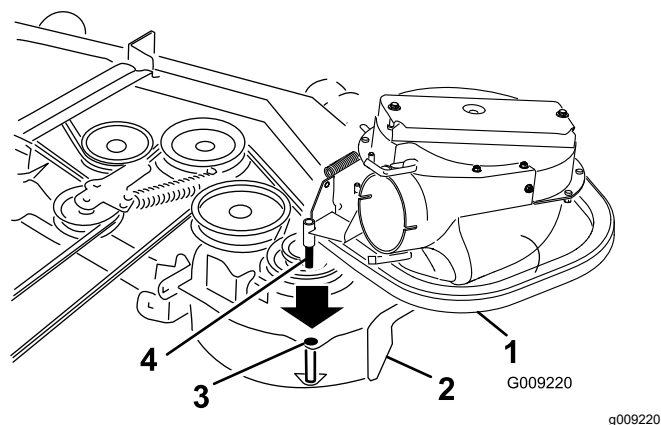


Figure 18

60- and 72-inch mower deck shown

- | | |
|--------------------|------------------------|
| 1. Blower assembly | 3. Pivot hole |
| 2. Mower deck | 4. Blower-assembly peg |

- Slide the blower-assembly peg into the pivot hole (Figure 17 or Figure 18).

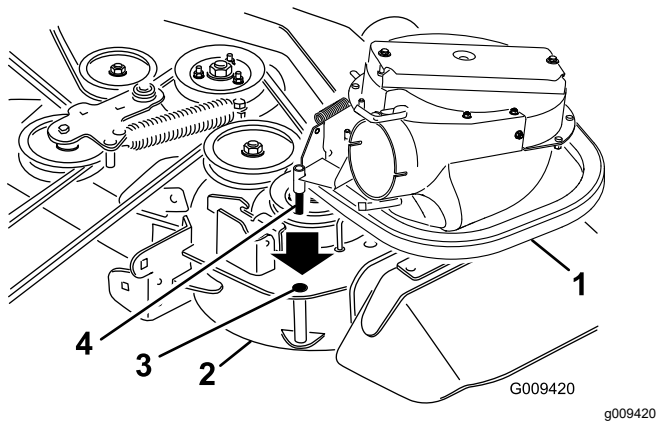


Figure 17

48- and 52-inch mower deck shown

- | | |
|--------------------|------------------------|
| 1. Blower assembly | 3. Pivot hole |
| 2. Mower deck | 4. Blower-assembly peg |

- Close the blower assembly to see if the latches are adjusted correctly.

Note: Loosen or tighten the bolt so the latches firmly hold the blower assembly against the mower deck, but can be released by hand (Figure 19).

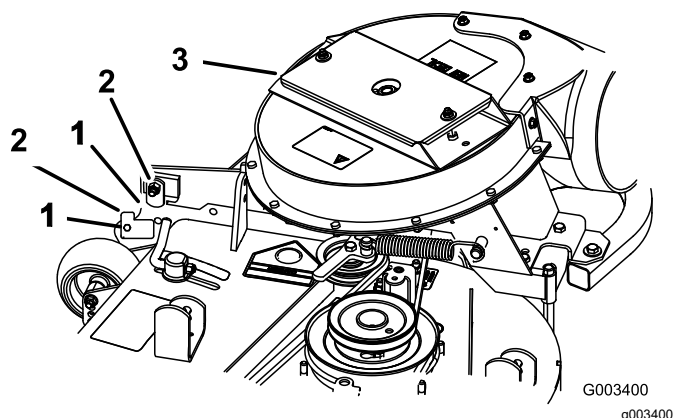


Figure 19

- Latch
- Bolt
- Blower assembly

- Install the spring as shown in Figure 20.

Note: Make sure that the hooks are in the correct position.

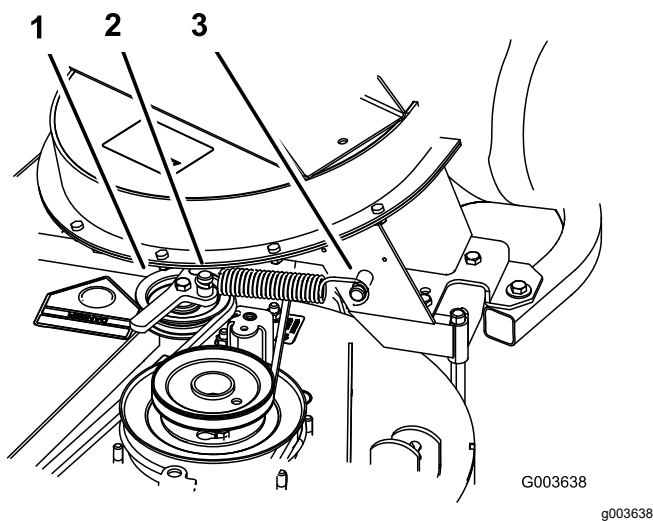


Figure 20

- Spring-loaded idler pulley
- Short-hook end
- Long-hook end

- Pull the spring-loaded idler pulley back and route the belt around the mower-deck pulley.

Note: Ensure that the belt is routed around the blower pulleys correctly (Figure 21).

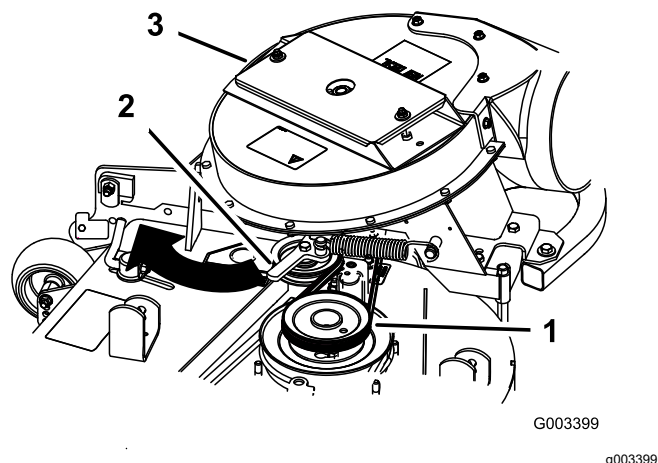


Figure 21

- Mower-deck pulley
- Spring-loaded idler pulley
- Blower

8

Installing the Discharge Tubes

Parts needed for this procedure:

1	Upper tube
1	Lower tube
3	Bolt (#10 x 3/4 inches)
3	Locknut (#10)
3	Washer (7/32 inch)

Procedure

Important: Make sure that the mower deck is in the lowest height-of-cut position while installing the discharge tubes.

Note: Remember to replace the grass deflector when the bagger is removed from the machine. Refer to [Replacing the Grass Deflector \(page 28\)](#).

- Disengage the PTO and set the parking brake.
- Stop the engine, remove the key, and wait for all moving parts to stop before leaving the operating position.

3. Lower the machine deck to the lowest height-of-cut position.
4. Remove the bags for viewing the tube under the hood.
5. Install the upper tube into the bagger opening and pull it back out so that the rubber seal is protruding out (Figure 22 or Figure 23).

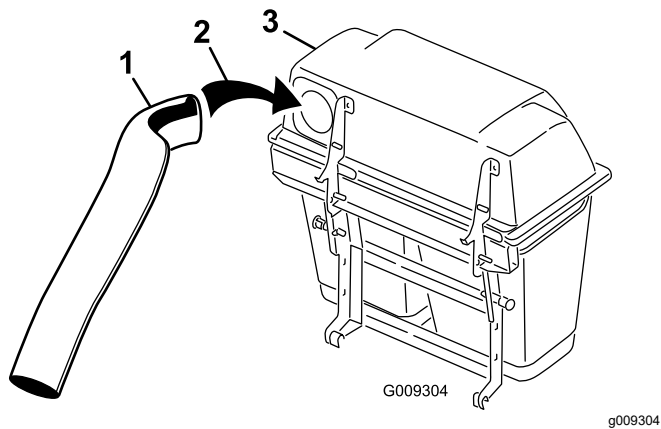


Figure 22
Twin bagger shown

1. Upper tube
2. Bagger opening
3. Bagger hood

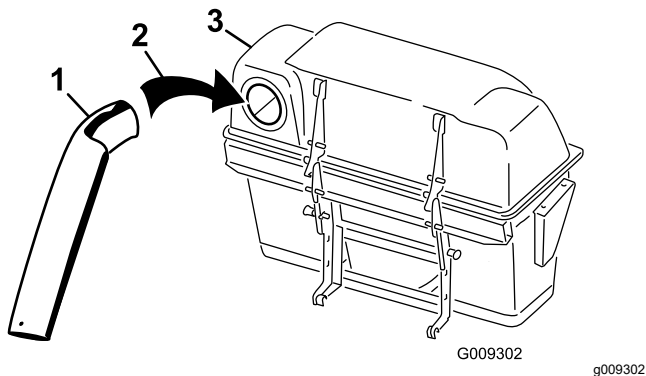


Figure 23
Triple bagger shown

1. Upper tube
2. Bagger opening
3. Bagger hood

6. With the hood in the down position, measure the distance the tube is inside the hood.

Measure from the hood plate to the edge of the tube as shown in Figure 24.

Note: This distance needs to be 19 mm (3/4 inch).

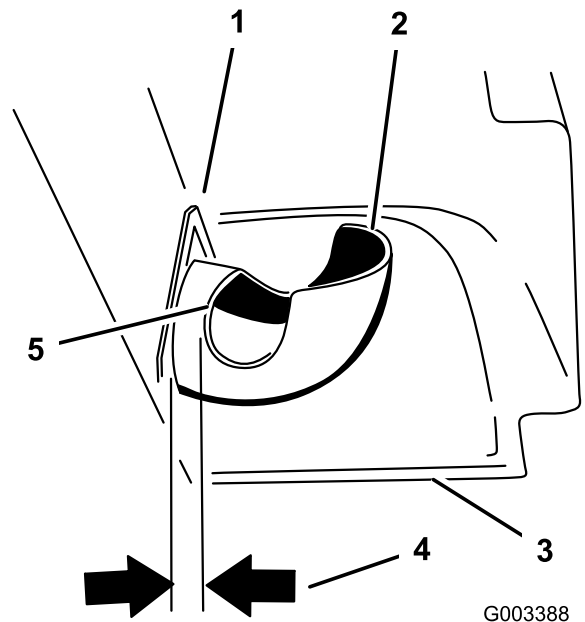


Figure 24

1. Hood plate
2. Upper tube
3. Hood in the down position
4. 19 mm (3/4 inch)
5. Edge of tube

7. Once the 19 mm (3/4 inch) measurement has been achieved, mark the upper tube on the outside where the rubber seal protrudes out (Figure 25).

Note: This is marked to ensure the correct position for the upper tube when drilling the holes and connecting the upper and lower tubes.

Note: The rubber seal must protrude out from the bagger hood.

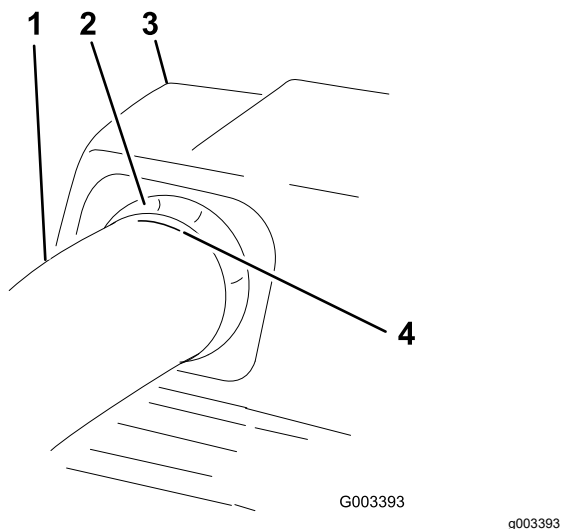


Figure 25

- | | |
|-------------------------------|--------------------------------------|
| 1. Upper tube | 3. Bagger hood |
| 2. Rubber seal protruding out | 4. Mark here against the rubber seal |

8. Install the lower tube into the upper tube (Figure 26).

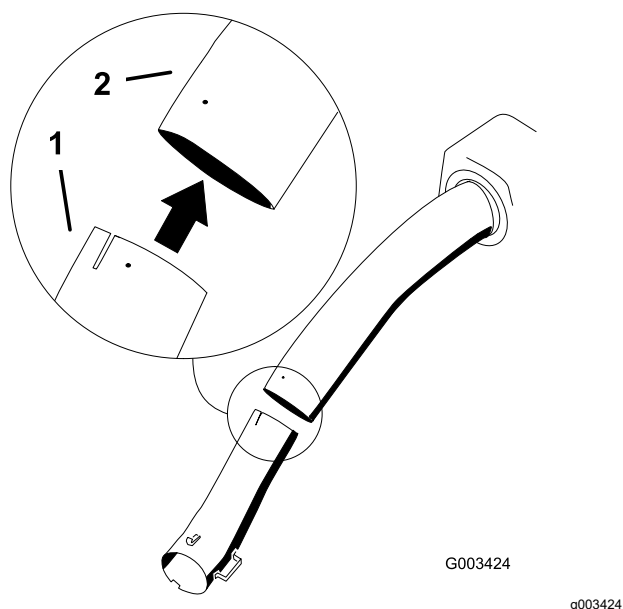


Figure 26

- | | |
|---------------|---------------|
| 1. Lower tube | 2. Upper tube |
|---------------|---------------|

9. Slide the lower tube onto the boot and latch them together (Figure 27 or Figure 28).

Note: There is a latch on the top and bottom of the blower housing.

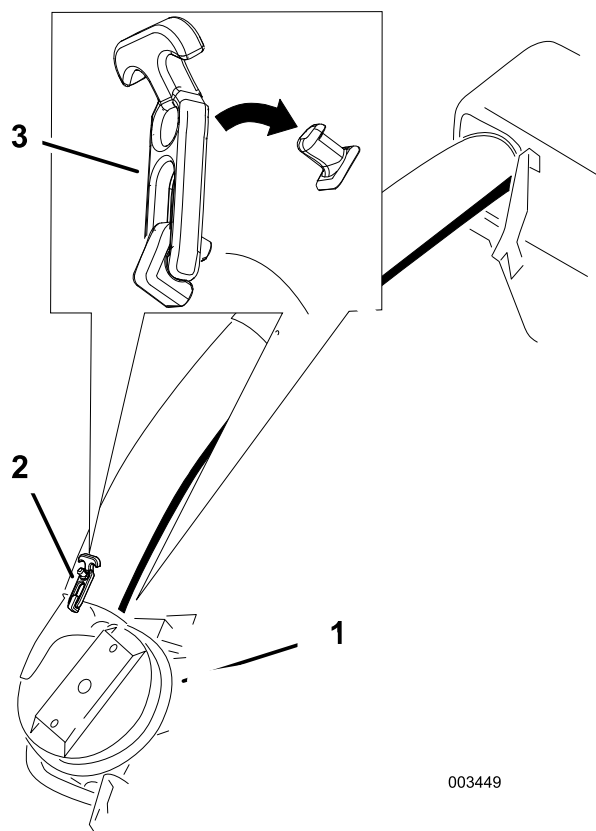


Figure 27

Twin bagger shown

- | | |
|--------------------|------------------------------|
| 1. Blower assembly | 3. Latch (twin bagger shown) |
| 2. Lower tube | |

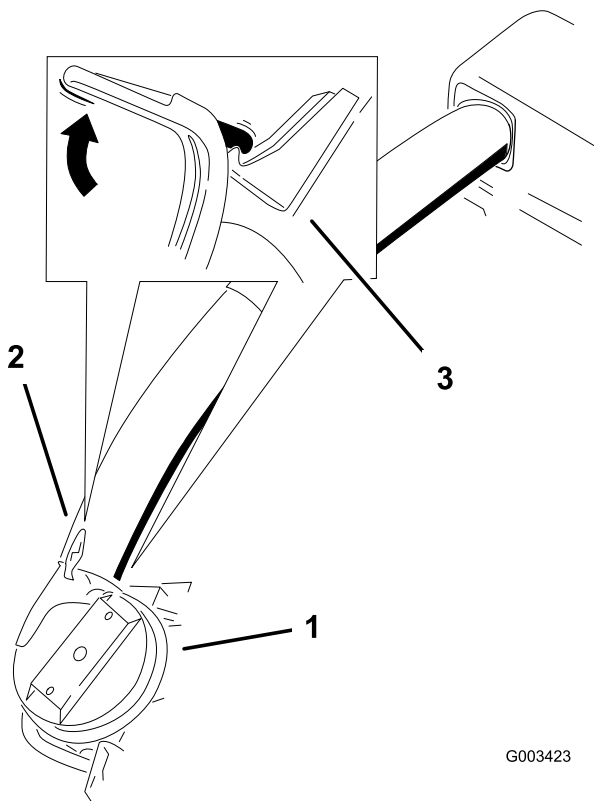


Figure 28

Triple bagger shown

- | | |
|--------------------|--------------------------------|
| 1. Blower assembly | 3. Latch (triple bagger shown) |
| 2. Lower tube | |

-
10. Make sure that the machine deck is in the lowest height-of-cut position.
 11. Check to make sure that the mark from [Figure 25](#) is still in place.

12. Using the 3 holes or indentations in the upper tube as a template, drill 3 holes (7/32 inch diameter) where the upper and lower tubes join together ([Figure 29](#)).

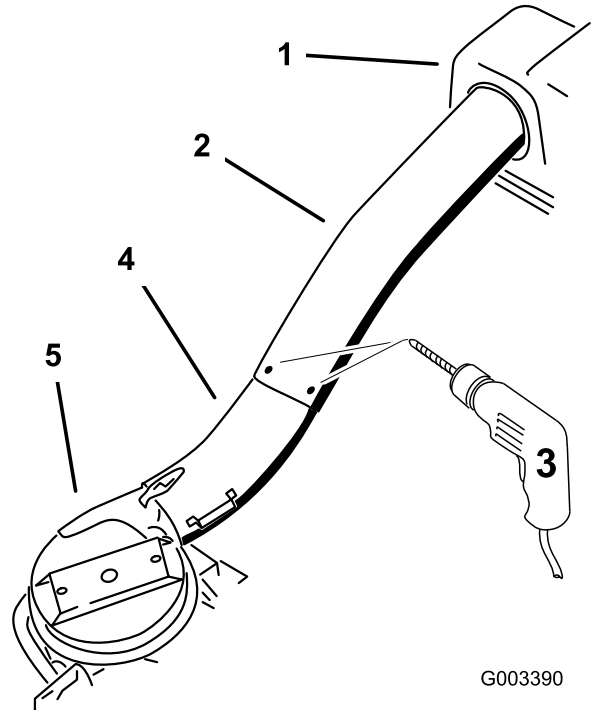


Figure 29

- | | |
|---|--------------------|
| 1. Bagger hood | 4. Lower tube |
| 2. Upper tube | 5. Blower assembly |
| 3. Drill 7/32 inch diameter holes here (use upper tube as a template) | |

-
13. Remove the lower tube from the blower.

14. Join the upper and lower tubes with 3 bolts (#10 x 3/4 inches), 3 flat washers (7/32 inch), and 3 locknuts (#10) as shown in [Figure 30](#).

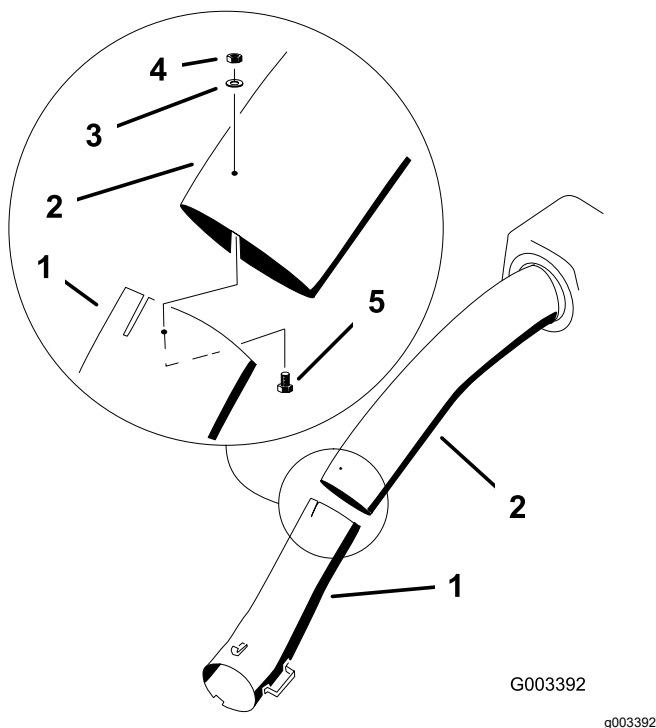


Figure 30

- | | |
|----------------------------|----------------------------|
| 1. Lower tube | 4. Locknut (#10) |
| 2. Upper tube | 5. Bolt (#10 x 3/4 inches) |
| 3. Flat washer (7/32 inch) | |

15. Install the lower tube onto the blower housing and secure it with the latches.
16. Install the bags onto the bagger.

9

Installing the Belt Cover

Parts needed for this procedure:

- | | |
|---|--|
| 1 | Belt cover (from Blower and Drive Kit) |
|---|--|

Procedure

1. Lower the mower deck to the lowest height-of-cut position.
2. Install the new belt cover so that the notches on both sides go over the belt-cover supports and secure the latch ([Figure 31](#) or [Figure 32](#)).

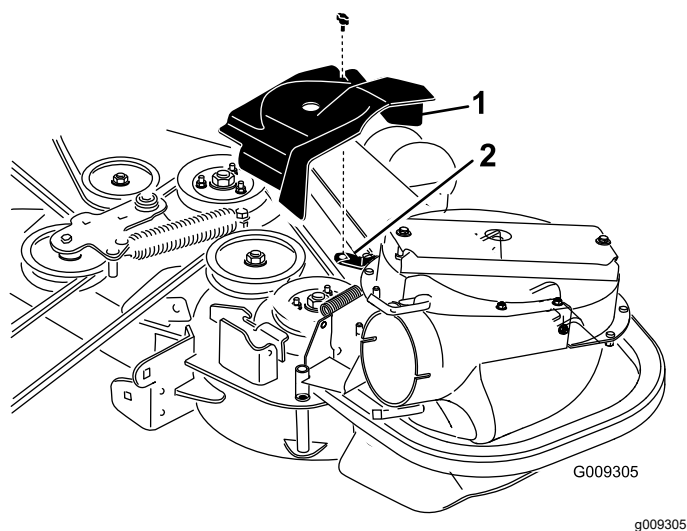


Figure 31

48- and 52-inch bagger shown

- | | |
|-----------------------|----------|
| 1. Belt cover | 3. Notch |
| 2. Belt-cover support | |

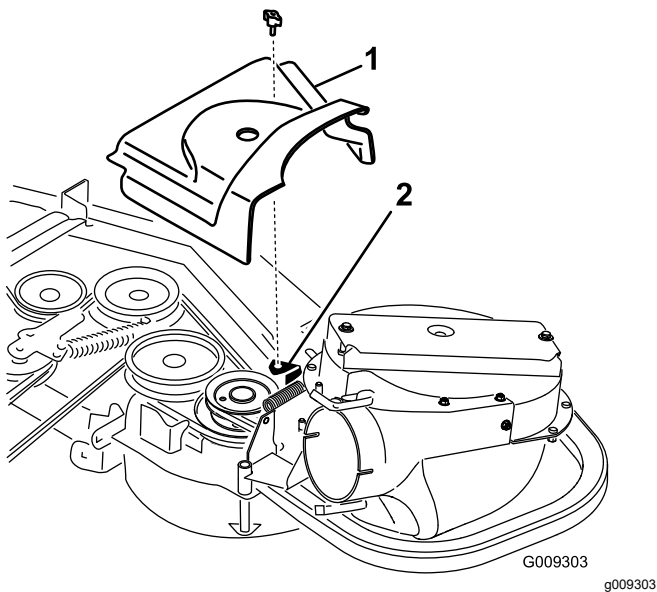


Figure 32
60- and 72-inch bagger shown

1. Belt cover
2. Belt-cover support
3. Notch

⚠ CAUTION

The bagger adds a lot of weight to the rear of the machine and may cause an unstable condition which could result in a loss of control.

The following table shows what weights are used when a bagger is installed.

	Front weights used	Caster weights used
48-inch machine deck with bagger	3	0
52-inch machine deck with bagger	3	0
60-inch machine deck with bagger	3	2
72-inch machine deck with bagger	1	2

1. Install caster weights on the front casters with a clevis pin and a hairpin cotter (Figure 33).
2. Install the nut onto each tap bolt and install the tap bolts into each weight (Figure 33).
3. Tighten the tap bolt so it touches the frame and then tighten the jam nut against the weight.

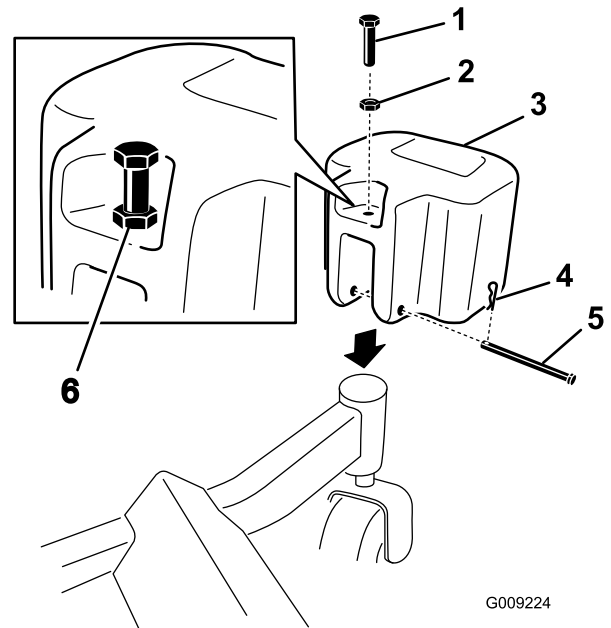


Figure 33

1. Tap bolt (3/8 x 1-1/2 inches)
2. Nut (3/8 inch)
3. Caster weight
4. Hairpin cotter
5. Clevis pin
6. Install the tap bolt against the frame and tighten the nut.

10

Installing the Weights

Parts needed for this procedure:

2	Caster weight (if needed)
2	Clevis pin
2	Hairpin cotter
6	Lock washer (3/8 inch)
1	Weight-mount bracket
6	Bolt (3/8 x 1-1/2 inches)
6	Flat washer (3/8 inch)
3	Carriage bolt (5/16 x 3/4 inch)
3	Flange nut (5/16 inch)
3	Front weight (48-inch, 52-inch, and 60-inch decks)
1	Front weight (72-inch decks)

Procedure

To comply with ANSI/OPEI B71.4-2012 Standard, add weights to the machine.

4. Install the weight-mount bracket under the footrest with 2 carriage bolts (5/16 x 3/4 inch) and 2 flange nuts (5/16 inch) as shown in [Figure 34](#).

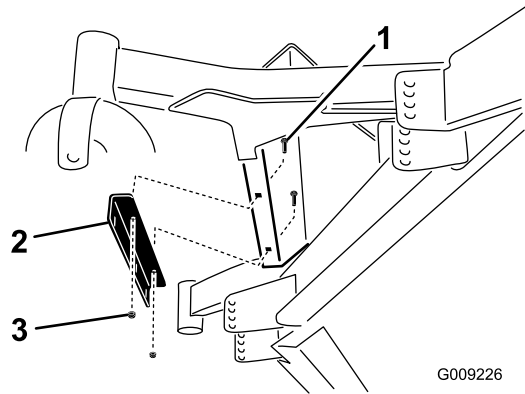


Figure 34

- | | |
|------------------------------------|---------------------------|
| 1. Carriage bolt (5/16 x 3/4 inch) | 3. Flange nut (5/16 inch) |
| 2. Weight-mount bracket | |

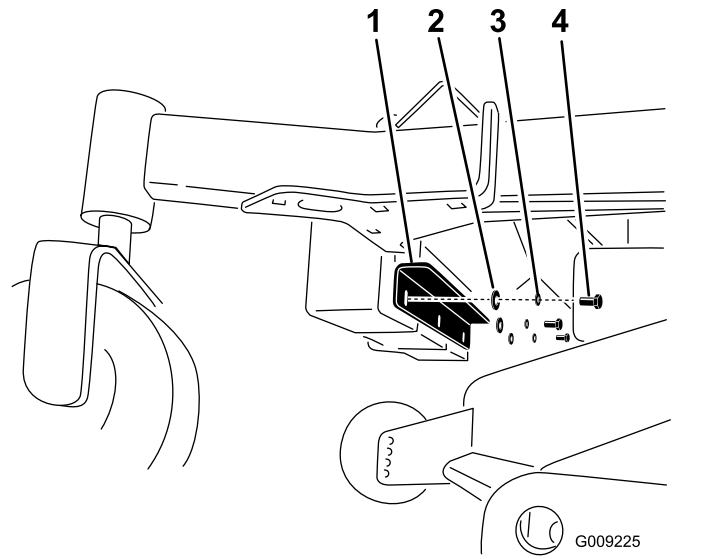


Figure 36

- | | |
|---------------------------|---------------------------|
| 1. Weight-mount bracket | 3. Lock washer (3/8 inch) |
| 2. Flat washer (3/8 inch) | 4. Bolt (3/8 x 1 inch) |

5. Install the front weights on top of the footrest ([Figure 35](#)).
6. Secure the front weights on top of the footrest and to the weight-mount bracket with 6 bolts (3/8 x 1 inch), 6 lock washers (3/8 inch), 3 flange nuts (3/8 inch) and 6 flat washers (3/8 inch) as shown in [Figure 35](#).

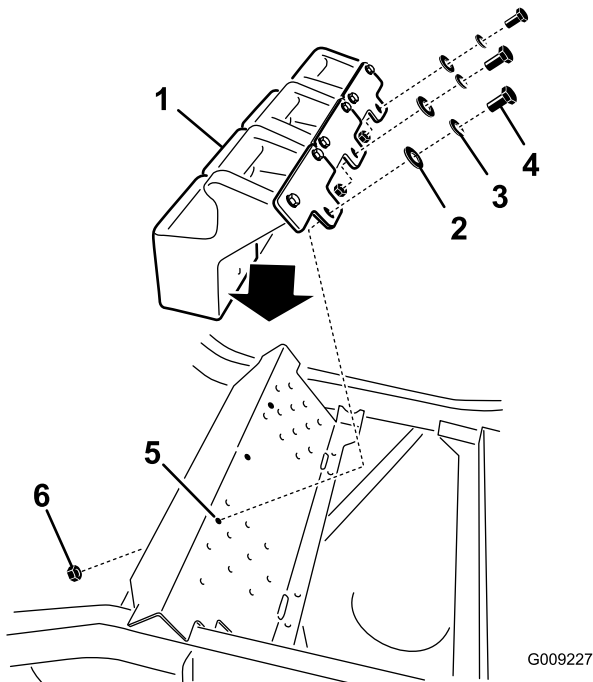


Figure 35

- | | |
|---------------------------|--------------------------|
| 1. Front weight | 4. Bolt (3/8 x 1 inch) |
| 2. Flat washer (3/8 inch) | 5. Hole in footrest |
| 3. Lock washer (3/8 inch) | 6. Flange nut (3/8 inch) |

11

Installing the Bumpers

Machines with MyRide™ Suspension System

Parts needed for this procedure:

2	Bumper
2	Spacer
2	Locknut (5/16 inch)

Procedure

For 48-inch, 52-inch, and 60-inch decks, install the bumpers to the 2 outside holes of the toeboard ([Figure 37](#)).

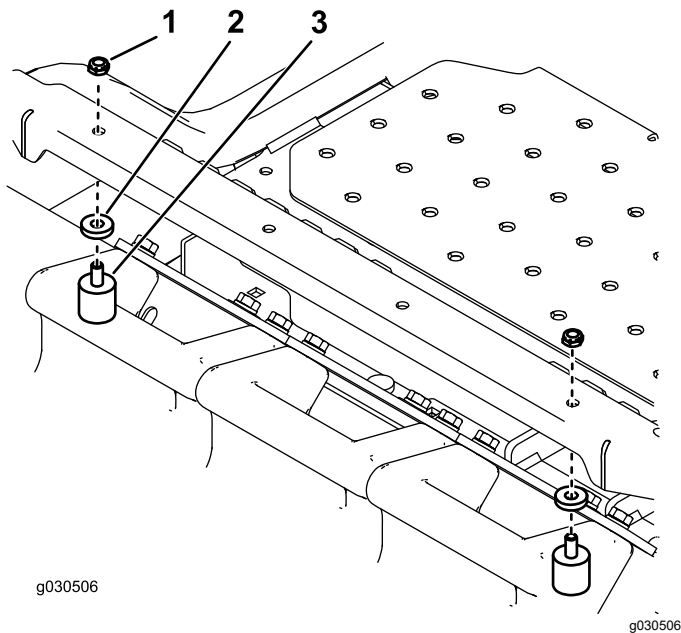


Figure 37

1. Locknut
2. Spacer
3. Bumper

For 72-inch decks, install the bumpers to the 2 inside holes of the toeboard ([Figure 38](#)).

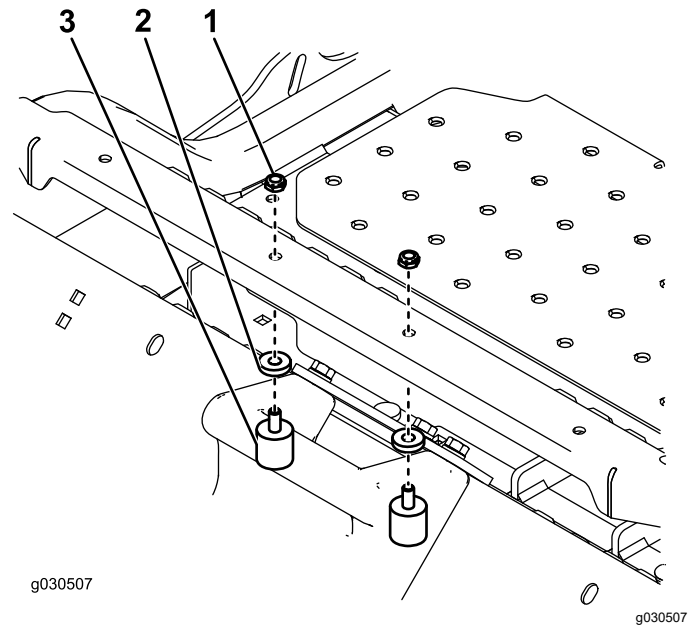


Figure 38

1. Locknut
2. Spacer
3. Bumper

12

Adjusting the Parking Brake

No Parts Required

Procedure

Check to make sure the parking brake is adjusted properly. Refer to your *Operator's Manual* for the correct procedure.

13

Checking the Tire Pressure

No Parts Required

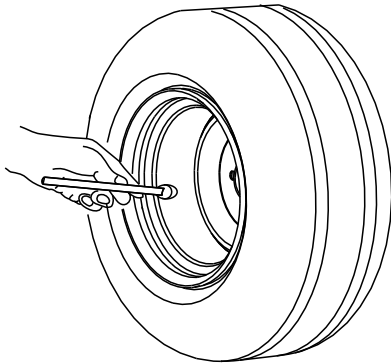
Procedure

Note: Increase the tire pressure due to the additional weight.

Check and increase the air pressure in the front caster wheels and rear tires (Figure 39).

Air pressure in the rear tires: 138 kPa (20 psi)

Air pressure in the front caster wheels: 172 kPa (25 psi)



G001055

Figure 39

g001055

Operation

Note: Determine the left and right sides of the machine from the normal operating position.

Important: Set the parking brake when leaving the machine unattended, even if just for a few minutes.

⚠ WARNING

To avoid personal injury, follow these procedures:

- Become familiar with all operating and safety instructions in the *Operator's Manual* for your machine before using this attachment.
- Never remove the bagger or bagger tubes while the engine is running.
- Always shut the engine off and wait for all moving parts to stop before clearing an obstruction from the bagging system.
- Never do maintenance or repairs while the engine is running.
- Set the parking brake.

⚠ WARNING

Without the grass deflector, bagger tubes or complete bagger assembly mounted in place, you and others are exposed to blade contact and thrown debris. Contact with the rotating mower blade(s) and thrown debris will cause injury or death.

- Always install the grass deflector when removing the bagger and changing to side discharge mode.
- If the grass deflector is ever damaged, replace it immediately. The grass deflector routes material down toward the turf.
- Never put your hands or feet under the mower deck.
- Never try to clear the discharge area or mower blades unless you move the power take-off (PTO) to off and rotate the ignition key to off. Also remove the key and pull the wire off the spark plug(s).
- Turn off the engine before unclogging the discharge chute.

⚠ CAUTION

Children or bystanders may be injured if they move or attempt to operate the machine while it is unattended.

Always remove the ignition key and set the parking brake when leaving the machine unattended, even if just for a few minutes.

Positioning the Adjustable Baffle

Adjust the baffle to position B (middle position) for bagging. Refer to the *Operator Manual* for the machine.

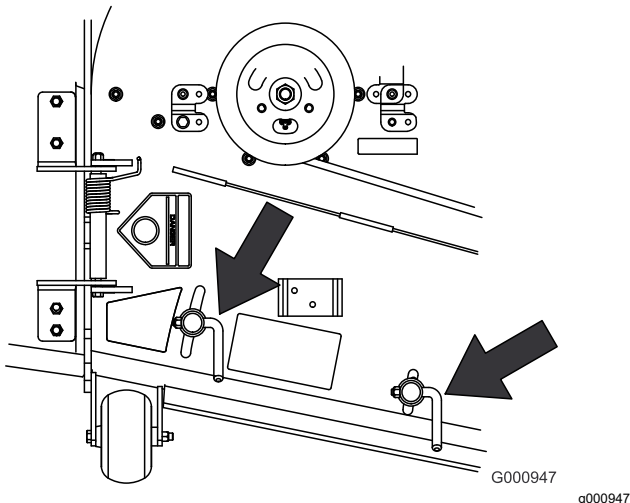


Figure 40

Emptying the Grass Bags

Grass bags are heavy when full. Be careful when lifting or handling a grass bag that is full.

1. Disengage the PTO, set the parking brake, and chock or block the tires if on a slope.
2. Unlatch the bagger latch.
3. Open the bagger hood.
4. Compress the debris into the bags. With both hands, lift up on the bag and unhook it from the bagger bracket.
5. Grab the handle on the bottom of the bag and tip it over to empty the bag (Figure 41).

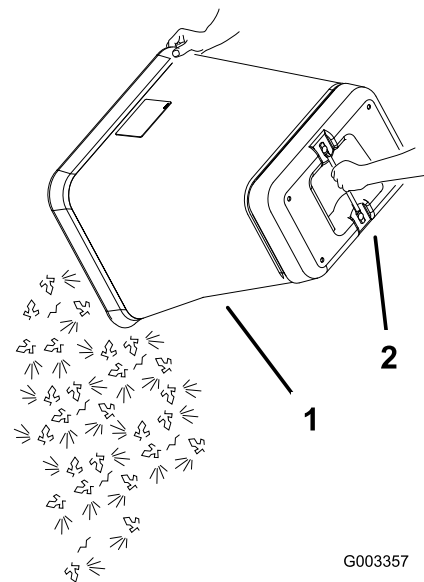


Figure 41

1. Bag
2. Bottom handle

6. Repeat for the other bag.
7. Install the bag tab into the notch in the bagger support frame.

Note: Do this for both bags.

8. Lower the bagger hood over the bags.
9. Latch the bagger hood.

Clearing Obstructions from the Bagger System

⚠ WARNING

When the bagger is in operation, the blower can be rotating and cut off or injure hands.

- Before adjusting, cleaning, repairing and inspecting the blower, and before unclogging the chute, turn off the engine and wait for all moving parts to stop. Remove the key.
- Use a stick, not your hands, to remove an obstruction from the blower and tube.
- Keep face, hands, feet, and any other part of your body or clothing away from concealed, moving, or rotating parts.

1. Disengage the PTO and set the parking brake.
2. Turn off the engine, remove the key, and wait for all moving parts to stop before leaving the operating position.
3. Empty the bags.

4. Unlatch the lower tube.
5. Remove the tubes from the bagger.
6. Use a stick or similar object, not your hands, to remove and clear the obstruction from the tube assembly.

Note: In most cases, the debris can be shaken out of the tubes.

7. If the blower assembly is plugged, unlatch the bagger blower assembly, remove the belt, and swing it open.
8. Use a stick or similar object, not your hands, to remove and clear the obstruction from the blower assembly.
9. After you remove the obstruction, install the complete bagger system and resume operation.

Removing the Bagger

⚠ WARNING

Components around engine will be hot if the machine has been running. Touching hot components can cause burns.

- Do not touch engine components when hot.
 - Allow engine to cool before removing the bagger.
1. Disengage the PTO, set the parking brake, and chock or block the tires.
 2. Turn off the engine, remove the key, and wait for all moving parts to stop before leaving the operating position.
 3. Unlatch the lower tube from the blower and remove the tube from the blower assembly.
 4. Remove the tube from the bagger hood.
 5. Lower the mower deck to the lowest height-of-cut position.
 6. Unlatch the belt cover over the mower-pulley assembly.
 7. Remove the bagger belt from the mower-pulley assembly.
 8. Open the blower assembly.
 9. Remove the blower assembly from the pivot hole.
 10. If you are changing to side discharge mode, ensure that the grass deflector is installed and can be lowered into working position.
 11. Remove the hood and bag assembly.

Using the Grass Deflector

⚠ DANGER

Without the grass deflector, discharge cover, or complete grass catcher assembly mounted in place, you and others are exposed to blade contact and thrown debris. Contact with rotating mower blade(s) and thrown debris will cause injury or death.

- Always install the grass deflector when removing the bagger and changing to side discharge mode.
- If the grass deflector is ever damaged, replace it immediately. The grass deflector routes material down toward the turf.
- Never put your hands or feet under the mower deck.
- Never try to clear the discharge area or mower blades unless you move the power take-off (PTO) to the OFF position, rotate the ignition key to off and remove the key.
- Never use your hands to clear the discharge area. Use a stick or similar object to clear the discharge area.

Transporting the Machine

Do not leave grass or debris in the bagger while transporting the machine.

⚠ DANGER

Transporting the machine with grass or debris in the bagger can damage the machine.

Do not leave grass or debris in the bagger while transporting the machine.

Operating Tips

Machine Size

Remember that the machine is longer and wider with this attachment installed. By turning too sharply in confined places you may damage the attachment or other property.

Trimming

Always trim with the left side of the mower deck. Do not trim with the right side of the mower deck because you could damage the bagging tubes.

Cutting Height

For optimum bagging performance, set the deck height-of-cut to remove no more than 51 to 76 mm (2 to 3 inches) or 1/3 of the grass height, whichever is less. Cutting off more than this will reduce the capacity of the vacuum system.

Cutting Frequency

Cut the grass often, especially when it grows rapidly. You will have to cut your grass twice if it gets excessively long (refer to [Bagging Long Grass](#) (page 24)).

Cutting Technique

For best lawn appearance, be sure to slightly overlap the mower deck into the previously cut area. This helps reduce the load on the engine and reduces the chance of plugging the blower assembly and tubes.

Bagging Speed

The bagging system may plug if you drive too fast and the engine speed gets too slow. On hills it may be necessary to slow the ground speed of the machine. Mow downhill whenever possible.

⚠ CAUTION

As the bagger fills, extra weight is added to the back of the machine. If you stop and start suddenly on hills, you may lose steering control or the machine may tip.

- **Do not start or stop suddenly when going uphill or downhill. Avoid uphill starts.**
- **If you do stop the machine when going uphill, disengage the PTO. Then back down the hill using a slow speed.**
- **Do not change speeds or stop on slopes.**

Bagging Long Grass

If the grass is ever allowed to grow longer than normal, or if it contains a high degree of moisture, raise the cutting height higher than usual and cut and bag the grass at this setting. Then cut and bag the grass again using the lower, normal setting.

Excessively long grass is heavy and may not be propelled completely into the bagger. If this happens, the tube and blower may plug. To avoid plugging the bagging system, mow the grass at a high height-of-cut, then lower the mower deck to your normal cutting height and repeat the bagging process.

Bagging Wet Grass

If possible, always try to cut grass when it is dry. Wet grass can cause plugging.

Reducing Plugging

To avoid plugging the bagging system, reduce ground speed and mow the grass at a high height-of-cut, then lower the mower deck to your normal cutting height and repeat the bagging process.

Signs of Plugging

As you are bagging, a small amount of grass clippings normally blow out the front of the mower deck. An excessive amount of clipping blowout indicates that the bagger is full or the tube is plugged.

Bagging Blades

In most mowing conditions, the standard high lift blades will provide the best bagging performance.

The Toro Atomic blade is recommended for bagging leaves in dry conditions. In dry dusty conditions, the medium lift or low lift blades will reduce dust and dirt blowout while providing effective bagging air flow.

Contact an Authorized Service Dealer for the proper blades for different mowing conditions.

Curb Climbing and Loading

Always lift the deck to the highest position when loading the machine on trailers or ascending/descending a curb. Leaving the mower deck in a lower position can cause damage to the mower deck while loading and going over a curb. If a curb is higher than 152 mm (6 inches), cross it at a sharp angle with the deck fully raised. Use extreme caution when loading onto a trailer.

Maintenance

Recommended Maintenance Schedule(s)

Maintenance Service Interval	Maintenance Procedure
After the first 8 hours	<ul style="list-style-type: none">Inspect the blower belt.Inspect the bagger.
Before each use or daily	<ul style="list-style-type: none">Clean the hood screen.Clean the bagger.
Every 25 hours	<ul style="list-style-type: none">Inspect the blower belt.
Every 50 hours	<ul style="list-style-type: none">Grease the idler arm.
Every 100 hours	<ul style="list-style-type: none">Inspect the bagger.

Cleaning the Hood Screen

Service Interval: Before each use or daily

The screens need to be cleaned before each use. In wet grass they will need to be cleaned more often.

1. Disengage the power take-off (PTO) and set the parking brake.
2. Turn off the engine, remove the key, and wait for all moving parts to stop before leaving the operating position.
3. Open the bagger hood.
4. Clean the debris from the screen.
5. Close the bagger hood.

Cleaning the Bagger and Bags

Service Interval: Before each use or daily

The bagger needs to be cleaned daily.

1. Wash the inside and outside of the bagger hood, bags, tube, and the underside of the mower deck. Use a mild automotive detergent to remove dirt.
2. Make sure that you remove matted grass from all parts.
3. After washing all the parts, let them dry thoroughly.

Note: With all parts installed, start and run the machine for a minute to assist in drying.

Inspecting the Blower Belt

Service Interval: After the first 8 hours

Every 25 hours

Check belts for cracks, frayed edges, burn marks or any other damage. Replace damaged belts.

Replacing the Blower Belt for 60- and 72-inch Machines

1. Disengage the PTO, move the motion-control levers to the NEUTRAL-LOCKED position, and set the parking brake.
2. Stop the engine, remove the key, and wait for all moving parts to stop before leaving the operating position.
3. Pull back on the spring-loaded idler pulley to relieve the belt tension ([Figure 42](#)).
4. Remove the existing bagger belt from the mower-deck pulley and then the blower pulleys.
5. Install the new belt around the blower pulleys and the mower-deck pulley ([Figure 42](#)).

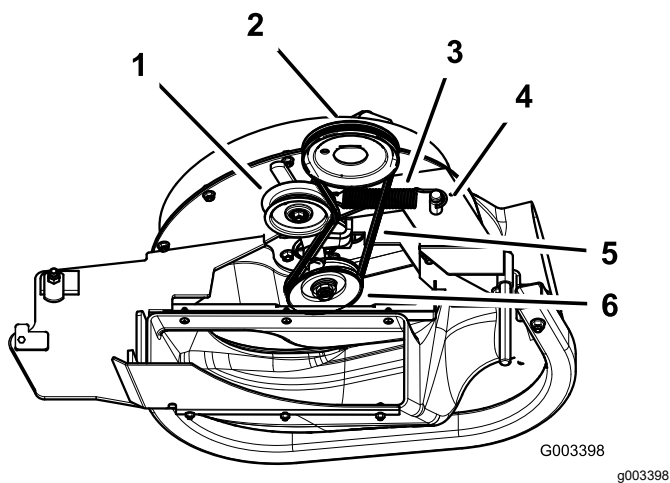


Figure 42

- | | |
|----------------------|------------------|
| 1. Idler pulley | 4. Spring peg |
| 2. Mower-deck pulley | 5. Belt |
| 3. Spring | 6. Blower pulley |

6. Install the spring as shown in [Figure 43](#).

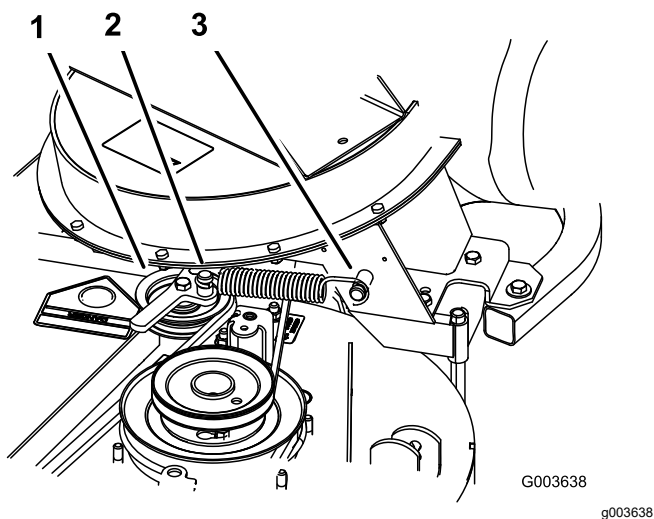


Figure 43

- | | |
|-------------------------------|------------------|
| 1. Spring-loaded idler pulley | 3. Long-hook end |
| 2. Short-hook end | |

7. Pull back on the spring-loaded idler pulley and install the belt onto the spring-loaded idler pulley ([Figure 42](#)).

2. Stop the engine, remove the key, and wait for all moving parts to stop before leaving the operating position.
3. Loosen the belt-guide bolt ([Figure 44](#)).
4. Remove the existing blower belt.
5. Install the new belt around the blower pulley ([Figure 44](#)).
6. Install the belt between the fixed-idler pulley and the belt-guide bolt.
7. Tighten the belt-guide bolt ([Figure 44](#)).

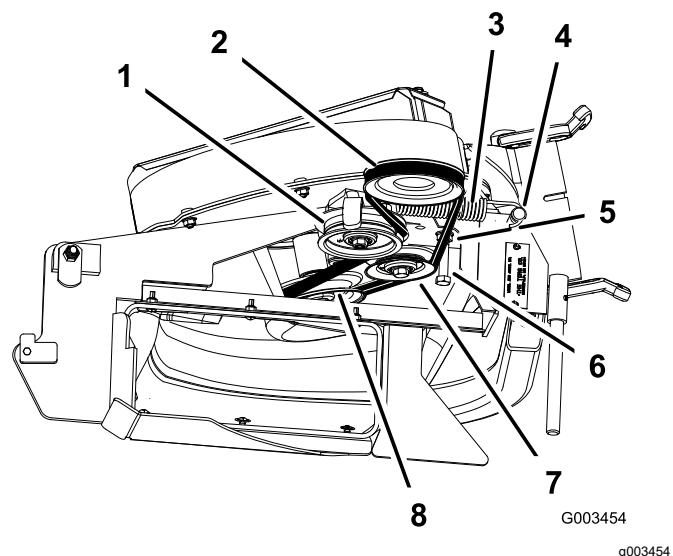


Figure 44

- | | |
|----------------------|-----------------------|
| 1. Idler pulley | 5. Belt |
| 2. Mower-deck pulley | 6. Belt-guide bolt |
| 3. Spring | 7. Fixed-idler pulley |
| 4. Spring peg | 8. Blower pulley |

8. Install the spring as shown in [Figure 45](#).

Replacing the Blower Belt for 48- and 52-inch Machines

1. Disengage the PTO, move the motion-control levers to the NEUTRAL-LOCKED position, and set the parking brake.

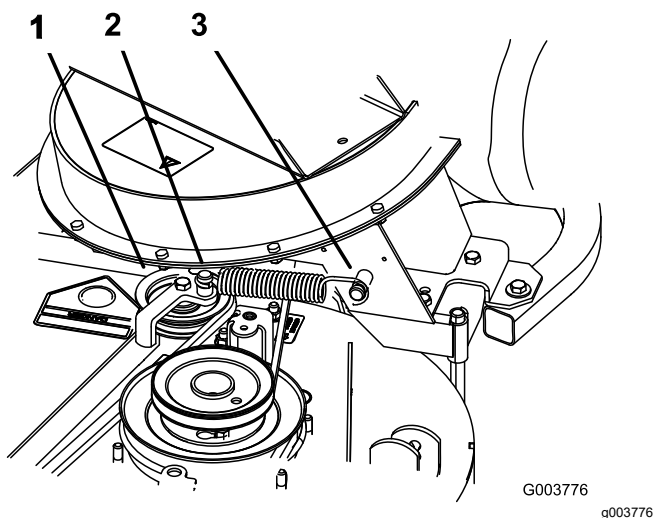


Figure 45

1. Spring-loaded idler pulley
2. Short-hook end
3. Long-hook end

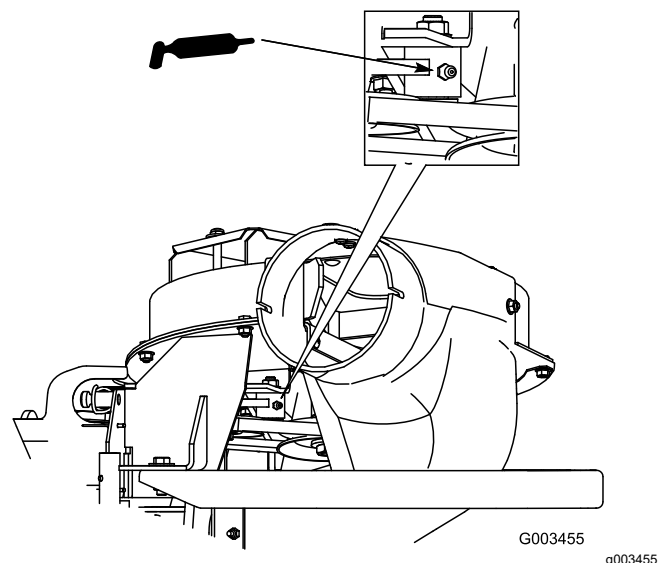


Figure 47

9. Install the belt onto the spring-loaded idler pulley (Figure 44).

Checking and Adjusting the Blower Latch

Close the blower assembly to see if the latches are adjusted correctly. Loosen or tighten the bolts so that the latches firmly hold the blower assembly against the mower deck but can be released by hand.

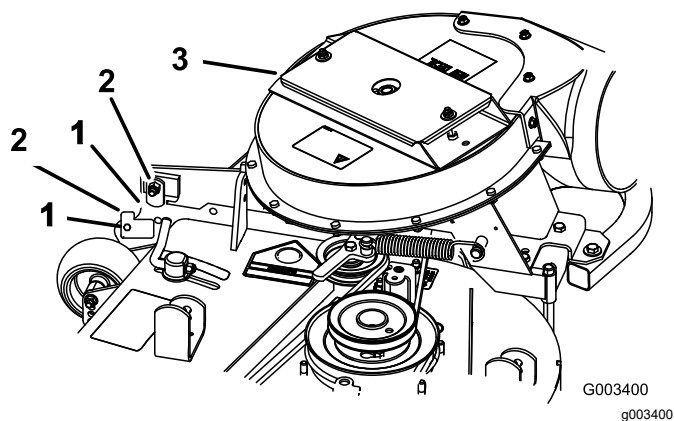


Figure 46

1. Latch
2. Bolt
3. Blower assembly

Greasing the Idler Arm

Service Interval: Every 50 hours

Grease the bagger belt idler arm (Figure 47) every 50 hours.

Inspecting the Bagger

Service Interval: Every 100 hours

After the first 8 hours

1. Disengage the PTO, move the motion-control levers to the NEUTRAL-LOCKED position, and set the parking brake.
2. Stop the engine, remove the key, and wait for all moving parts to stop before leaving the operating position.
3. Check the upper tube, lower tube, bagger hood, and the blower assembly. Replace these parts if they are cracked or broken.
4. Check the bags, bagger frame, and screen. Replace any parts that are cracked or broken.
5. Tighten all nuts, bolts and screws.

Inspecting the Mower Blades

1. Inspect the mower blades regularly and whenever a blade strikes a foreign object.
2. If blades are badly worn or damaged, install new blades. Refer to your machine *Operator's Manual* for complete blade maintenance.

Installing the Mower Blades

In most mowing conditions, the standard high lift blades will provide the best bagging performance.

The Toro Atomic blade is recommended for bagging leaves in dry conditions. In dry dusty conditions, the medium lift or low lift blades will reduce dust and dirt blowout while providing effective bagging air flow.

Contact an Authorized Service Dealer for the proper blades for different mowing conditions.

Refer to the machines *Operator's Manual* for more information on installing blades.

Replacing the Grass Deflector

⚠ WARNING

An uncovered discharge opening could allow the lawn mower to throw objects at you or bystanders, resulting in serious injury. Also, contact with the blade could occur.

- **Never operate the lawn mower unless you install a cover plate, a mulch plate, or a grass chute and catcher.**
- **Make sure that the grass deflector is in the down position.**

1. Remove the locknut, bolt, spring and spacer holding the deflector to the pivot brackets (Figure 48).
2. Remove the damaged or worn grass deflector.
3. Place the spacer and spring onto the grass deflector. Place the L-end of the spring behind the deck edge.

Note: Make sure that the L-end of the spring is installed behind the deck edge before installing the bolt as shown in Figure 48

4. Install the bolt and nut.
5. Place the J-hook end of the spring around the grass deflector (Figure 48).

Important: The grass deflector must be able to lower down into position. Lift the deflector up to test that it lowers into the full down position.

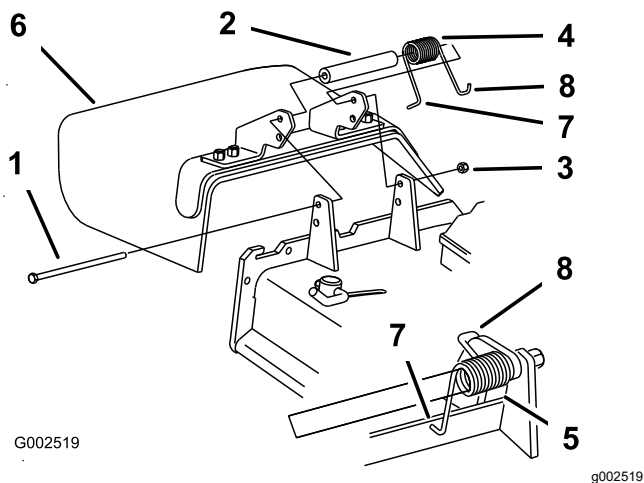


Figure 48

- | | |
|------------|---|
| 1. Bolt | 5. Spring (installed) |
| 2. Spacer | 6. Grass deflector |
| 3. Locknut | 7. L-end of spring, place
behind deck edge before
installing bolt |
| 4. Spring | 8. J-hook end of spring |

Storage

1. Clean the bagger attachment. Refer to [Cleaning the Bagger and Bags \(page 25\)](#).
2. Inspect the bagger attachment for damage. Refer to [Inspecting the Bagger \(page 28\)](#).
3. Make sure that the bags are empty and thoroughly dry.
4. Check the belt for wear or cracks.
5. Store the machine in a clean, dry place, out of direct sunlight. If you must store the machine outside, cover it with a weatherproof cover. This protects the plastic parts and extends the life of the machine.

Troubleshooting

Problem	Possible Cause	Corrective Action
There is abnormal vibration.	<ol style="list-style-type: none"> 1. The cutting blade(s) is/are bent or unbalanced. 2. The blade mounting bolt is loose. 3. The blower pulley or pulley assembly is loose. 4. The bagger belt is worn. 5. The blower fan blade(s) is/are bent or unbalanced. 	<ol style="list-style-type: none"> 1. Install new cutting blade(s). 2. Tighten the blade mounting bolt. 3. Tighten the appropriate pulley. 4. Replace the belt. 5. Contact an Authorized Service Dealer.
There is reduced bagging performance.	<ol style="list-style-type: none"> 1. The engine speed is low. 2. The bagger-hood screen is plugged. 3. Loose bagger belt. 4. The blower or tube is plugged. 5. The bags are full. 	<ol style="list-style-type: none"> 1. Always operate the bagger at full throttle. 2. Remove the debris, leaves or grass clippings from the screen. 3. Replace the bagger belt. 4. Locate and remove the plugged debris. 5. Empty the bags.
The blower and tubes plug too frequently.	<ol style="list-style-type: none"> 1. The bags are too full. 2. The engine speed is low. 3. The grass is too wet. 4. The grass is too long. 5. The screen in the hood is plugged. 6. The ground speed is too fast. 7. The bagger belt is worn. 	<ol style="list-style-type: none"> 1. Dump the bags more frequently. 2. Always operate the bagger at full throttle. 3. Cut the grass when it is dry. 4. Cut no more than 2-3 inches (51-76 mm) or 1/3 of the grass height, which ever is less. 5. Remove the debris, leaves or grass clippings from the screen. 6. Drive slower at full throttle. 7. Replace the belt.
There is debris blowout.	<ol style="list-style-type: none"> 1. The bags are too full. 2. The ground speed is too fast. 3. The mower deck is not leveled. 	<ol style="list-style-type: none"> 1. Dump the bags more frequently. 2. Drive slower at full throttle. 3. See the mower operator's manual for leveling the mower deck.
The blower impeller does not spin freely.	<ol style="list-style-type: none"> 1. The blower is plugged. 2. The impeller is not aligned. 	<ol style="list-style-type: none"> 1. Remove the debris, leaves or grass clippings from the blower impeller. 2. Contact an Authorized Service Dealer.

Notes:

Notes:

Notes:

Declaration of Incorporation

The Toro Company, 8111 Lyndale Ave. South, Bloomington, MN, USA declares that the following unit(s) conform(s) to the directives listed, when installed in accordance with the accompanying instructions onto certain Toro models as indicated on the relevant Declarations of Conformity.

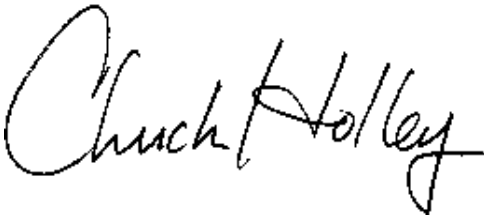
1

Relevant technical documentation has been compiled as required per Part B of Annex VII of 2006/42/EC.

We will undertake to transmit, in response to requests by national authorities, relevant information on this partly completed machinery. The method of transmission shall be electronic transmittal.

This machinery shall not be put into service until incorporated into approved Toro models as indicated on the associated Declaration of Conformity and in accordance with all instructions, whereby it can be declared in conformity with all relevant Directives.

Certified:



Chuck Holley
Sr. Engineering Manager
8111 Lyndale Ave. South
Bloomington, MN 55420, USA
May 29, 2015

Authorized Representative:

Marcel Dutrieux
Manager European Product Integrity
Toro Europe NV
Nijverheidsstraat 5
2260 Oevel
Belgium

International Distributor List

Distributor:	Country:	Phone Number:	Distributor:	Country:	Phone Number:
Agrolanc Kft	Hungary	36 27 539 640	Maquiver S.A.	Colombia	57 1 236 4079
Balama Prima Engineering Equip.	Hong Kong	852 2155 2163	Maruyama Mfg. Co. Inc.	Japan	81 3 3252 2285
B-Ray Corporation	Korea	82 32 551 2076	Mountfield a.s.	Czech Republic	420 255 704 220
Casco Sales Company	Puerto Rico	787 788 8383	Mountfield a.s.	Slovakia	420 255 704 220
Ceres S.A.	Costa Rica	506 239 1138	Munditol S.A.	Argentina	54 11 4 821 9999
CSSC Turf Equipment (pvt) Ltd.	Sri Lanka	94 11 2746100	Norma Garden	Russia	7 495 411 61 20
Cyril Johnston & Co.	Northern Ireland	44 2890 813 121	Oslinger Turf Equipment SA	Ecuador	593 4 239 6970
Cyril Johnston & Co.	Republic of Ireland	44 2890 813 121	Oy Hako Ground and Garden Ab	Finland	358 987 00733
Equiver	Mexico	52 55 539 95444	Parkland Products Ltd.	New Zealand	64 3 34 93760
Femco S.A.	Guatemala	502 442 3277	Perfetto	Poland	48 61 8 208 416
ForGarder OU	Estonia	372 384 6060	Pratoverde SRL.	Italy	39 049 9128 128
G.Y.K. Company Ltd.	Japan	81 726 325 861	Prochaska & Cie	Austria	43 1 278 5100
Geomechaniki of Athens	Greece	30 10 935 0054	RT Cohen 2004 Ltd.	Israel	972 986 17979
Golf international Turizm	Turkey	90 216 336 5993	Riversa	Spain	34 9 52 83 7500
Guandong Golden Star	China	86 20 876 51338	Lely Turfcare	Denmark	45 66 109 200
Hako Ground and Garden	Sweden	46 35 10 0000	Solvert S.A.S.	France	33 1 30 81 77 00
Hako Ground and Garden	Norway	47 22 90 7760	Spypros Stavrinides Limited	Cyprus	357 22 434131
Hayter Limited (U.K.)	United Kingdom	44 1279 723 444	Surge Systems India Limited	India	91 1 292299901
Hydroturf Int. Co Dubai	United Arab Emirates	97 14 347 9479	T-Markt Logistics Ltd.	Hungary	36 26 525 500
Hydroturf Egypt LLC	Egypt	202 519 4308	Toro Australia	Australia	61 3 9580 7355
Irrimac	Portugal	351 21 238 8260	Toro Europe NV	Belgium	32 14 562 960
Irrigation Products Int'l Pvt Ltd.	India	0091 44 2449 4387	Valtech	Morocco	212 5 3766 3636
Jean Heybroek b.v.	Netherlands	31 30 639 4611	Victus Emak	Poland	48 61 823 8369

European Privacy Notice

The Information Toro Collects

Toro Warranty Company (Toro) respects your privacy. In order to process your warranty claim and contact you in the event of a product recall, we ask you to share certain personal information with us, either directly or through your local Toro company or dealer.

The Toro warranty system is hosted on servers located within the United States where privacy law may not provide the same protection as applies in your country.

BY SHARING YOUR PERSONAL INFORMATION WITH US, YOU ARE CONSENTING TO THE PROCESSING OF YOUR PERSONAL INFORMATION AS DESCRIBED IN THIS PRIVACY NOTICE.

The Way Toro Uses Information

Toro may use your personal information to process warranty claims, to contact you in the event of a product recall and for any other purpose which we tell you about. Toro may share your information with Toro's affiliates, dealers or other business partners in connection with any of these activities. We will not sell your personal information to any other company. We reserve the right to disclose personal information in order to comply with applicable laws and with requests by the appropriate authorities, to operate our systems properly or for our own protection or that of other users.

Retention of your Personal Information

We will keep your personal information as long as we need it for the purposes for which it was originally collected or for other legitimate purposes (such as regulatory compliance), or as required by applicable law.

Toro's Commitment to Security of Your Personal Information

We take reasonable precautions in order to protect the security of your personal information. We also take steps to maintain the accuracy and current status of personal information.

Access and Correction of your Personal Information

If you would like to review or correct your personal information, please contact us by email at legal@toro.com.

Australian Consumer Law

Australian customers will find details relating to the Australian Consumer Law either inside the box or at your local Toro Dealer.



The Toro Total Coverage Warranty

A Limited Warranty (see warranty periods below)

Landscape
Contractor
Equipment
(LCE)

Conditions and Products Covered

The Toro Company and its affiliate, Toro Warranty Company, pursuant to an agreement between them, jointly promise to the original purchaser to repair the Toro Products listed below if defective in materials or workmanship.

The following time periods apply from the date of purchase by the original owner:

Products	Warranty Period
21 in. Mowers	2 years Residential Use ¹ 1 year Commercial Use
• Engines ⁴	Honda – 2 years Kawasaki – 3 years
30 in. Mowers	2 years Residential Use ¹ 1 year Commercial Use
• Engines ⁴	Kawasaki – 3 years
Mid-Size Walk-Behind Mowers	2 years
• Engines ⁴	Kawasaki – 3 years
Grand Stand® Mowers	5 years or 1,200 hours ² 3 years
• Engines ⁴	Lifetime (original owner only) ³
• Frame	
Z Master® 2000 Series Mowers	4 years or 500 hours ² 3 years
• Engines ⁴	Lifetime (original owner only) ³
• Frame	
Z Master® 3000 Series Mowers	5 years or 1,200 hours ² 3 years
• Engines ⁴	Lifetime (original owner only) ³
• Frame	
Z Master® 5000 Series Mowers	5 years or 1,200 hours ² Kohler Command – 2 years Kohler EFI – 3 years
• Engines ⁴	Lifetime (original owner only) ³
• Frame	
Z Master® 6000 Series Mowers	5 years or 1,200 hours ² Kawasaki – 3 years
• Engines ⁴	Lifetime (original owner only) ³
• Frame	
Z Master® 7000 Series Mowers	5 years or 1,200 hours ² 2 years
• Engines ⁴	Lifetime (original owner only) ³
• Frame	
Z Master® 8000 Series Mowers	2 years or 1,200 hours ² 2 years
• Engines ⁴	Lifetime (original owner only) ³
• Frame	
All Mowers	
• Battery	90 days Parts and Labor 1 year Parts only
• Belts and Tires	90 days
• Attachments	1 year

¹Residential use means use of the product on the same lot as your home. Use at more than one location is considered commercial use and the commercial warranty would apply.

²Whichever occurs first.

³Lifetime Frame Warranty - If the main frame, consisting of the parts welded together to form the tractor structure that other components such as the engine are secured to, cracks or breaks in normal use, it will be repaired or replaced, at Toro's option, under warranty at no cost for parts and labor. Frame failure due to misuse or abuse and failure or repair required due to rust or corrosion are not covered.

⁴Some engines used on Toro Products are warranted by the engine manufacturer.

Instructions for Obtaining Warranty Service

If you think that your Toro Product contains a defect in materials or workmanship, follow this procedure:

1. Contact any Authorized Toro Service Dealer to arrange service at their dealership. To locate a dealer convenient to you, refer to the Yellow Pages of your telephone directory (look under "Lawn Mowers") or access our web site at www.Toro.com. You may also call the numbers listed in item #3 to use the 24-hour Toro Dealer locator system.
2. Bring the product and your proof of purchase (sales receipt) to the Service Dealer. The dealer will diagnose the problem and determine if it is covered under warranty.
3. If for any reason you are dissatisfied with the Service Dealer's analysis or with the assistance provided, contact us at:

RLC Customer Care Department
Toro Warranty Company
8111 Lyndale Avenue South
Bloomington, MN 55420-1196
888-865-5676 (U.S. Customers)
888-865-5691 (Canada customers)

Owner Responsibilities

You must maintain your Toro Product by following the maintenance procedures described in the *Operator's Manual*. Such routine maintenance, whether performed by a dealer or by you, is at your expense.

Items and Conditions Not Covered

There is no other express warranty except for special emission system coverage and engine warranty coverage on some products. This express warranty does not cover the following:

- Cost of regular maintenance service or parts, such as filters, fuel, lubricants, oil changes, spark plugs, air filters blade sharpening or worn blades, cable/linkage adjustments, or brake and clutch adjustments
- Components failing due to normal wear
- Any product or part which has been altered or misused or neglected and requires replacement or repair due to accidents or lack of proper maintenance
- Pickup and delivery charges
- Repairs or attempted repairs by anyone other than an Authorized Toro Service Dealer
- Repairs necessary due to failure to follow recommended fuel procedure (consult *Operator's Manual* for more details)
 - Removing contaminants from the fuel system is not covered
 - Use of old fuel (more than one month old) or fuel which contains more than 10% ethanol or more than 15% MTBE
 - Failure to drain the fuel system prior to any period of non-use over one month

General Conditions

All repairs covered by these warranties must be performed by an Authorized Toro Service Dealer using Toro approved replacement parts.

Neither The Toro Company nor Toro Warranty Company is liable for indirect, incidental or consequential damages in connection with the use of the Toro Products covered by this warranty, including any cost or expense of providing substitute equipment or service during reasonable periods of malfunction or non-use pending completion of repairs under this warranty.

All implied warranties of merchantability (that the product is fit for ordinary use) and fitness for use (that the product is fit for a particular purpose) are limited to the duration of the express warranty.

Some states do not allow exclusions of incidental or consequential damages, or limitations on how long an implied warranty lasts, so the above exclusions and limitations may not apply to you.

This warranty gives you specific legal rights, and you may also have other rights which vary from state to state.

Countries Other than the United States or Canada

Customers who have purchased Toro products outside the United States or Canada should contact their Toro Distributor (Dealer) to obtain guarantee policies for your country, province, or state. If for any reason you are dissatisfied with your Distributor's service or have difficulty obtaining guarantee information, contact the Toro importer. If all other remedies fail, you may contact us at Toro Warranty Company.

Australian Consumer Law: Australian customers will find details relating to the Australian Consumer Law either inside the box or at your local Toro Dealer.