



Blower and Drive Kit

48in, 52in, 60in or 72in E-Z Vac™ for Z Master® Riding Mower

Model No. 78551—Serial No. 290000001 and Up

Model No. 78552—Serial No. 290000001 and Up

Model No. 78553—Serial No. 290000001 and Up

Model No. 78554—Serial No. 290000001 and Up

Installation Instructions

Important: Do not use drive or caster Tweels with this attachment. If the machine is equipped with drive or caster Tweels, replace them with factory pneumatic drive tires or factory pneumatic or semi-pneumatic caster tires.

Note: Determine the left and right sides of the machine from the normal operating position.

Loose Parts

Use the chart below to verify that all parts have been shipped.

Procedure	Description	Qty.	Use
1	No parts required	—	Prepare the mower.
2	No parts required	—	Remove the existing belt cover, belt, and bracket.
3	Pulley assembly	1	Install the pulley assembly and belt.
4	Belt cover bracket Carriage bolt (1/4 x 3/4 inches) Locknut (1/4 inch)	1 2 2	Install the new belt cover bracket for 48- and 52-inch mowers.
5	Belt cover bracket Carriage bolt (1/4 x 3/4 inches) Locknut (1/4 inch)	1 2 2	Install the new belt cover bracket for 60- and 72-inch mowers.
6	Blower assembly Bagger belt Blower belt cover Spring	1 1 1 1	Install the blower, bagger belt, spring, and belt cover.



1

Preparing the Mower

No Parts Required

Procedure

Perform the following procedure to prepare the mower for attaching the blower and finishing kit.

1. Disengage the PTO, move the motion-control levers to the NEUTRAL-LOCKED position and set the parking brake.
2. Stop the engine, remove the key, and wait for all moving parts to stop before leaving the operating position.
3. Repair all bent or damaged areas of mower deck and replace any missing parts.
4. Clean the mower of any debris on the deck or rear part of the mower to ease installation.

2

Removing the Existing Belt Cover, Belt, and Bracket

No Parts Required

Procedure

Note: Clean the area around the belt cover before removing.

1. Lower the mower deck to the lowest height-of-cut position.
2. Remove the right belt cover ([Figure 1](#)).

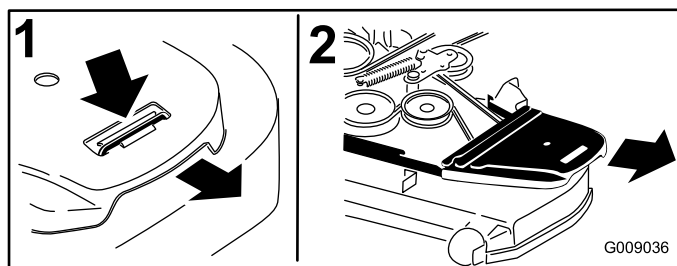


Figure 1

1. Push tab down.
2. Remove belt cover.

3. **For 48- and 52-inch mowers only:** Loosen the bolts holding the right spindle to the mower deck ([Figure 2](#)).

Note: This will allow access to the nuts holding the right belt cover bracket to the mower deck.

3

Installing the Pulley Assembly and Belt

Parts needed for this procedure:

1	Pulley assembly
---	-----------------

For Units with Bolts

1. Loosen, but do not remove, the tapping bolts on the existing mower-deck pulley ([Figure 4](#)).

Note: There should be a 5 mm (3/16 inch) clearance between the bolt head and pulley.

2. Align the new pulley assembly so that the openings fit over the pulley bolt heads ([Figure 4](#)).
3. Turn the pulley to lock it into position ([Figure 4](#)).

Note: If the pulley does not turn, loosen the bolts more to raise the bolt heads and allow the pulley to lock into position.

4. After the new pulley assembly is in position, tighten the existing bolts to secure new pulley assembly.

Note: Torque the bolts to 28 to 34 N-m (21 to 25 ft-lb).

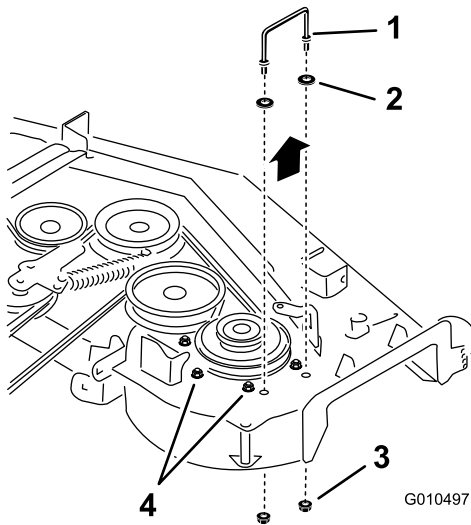


Figure 2

48- and 52-inch mower deck shown

1. Right belt cover bracket
2. Washer
3. Flange nut
4. Loosen these bolts.

4. Remove the existing right belt cover bracket ([Figure 2](#) and [Figure 3](#)).

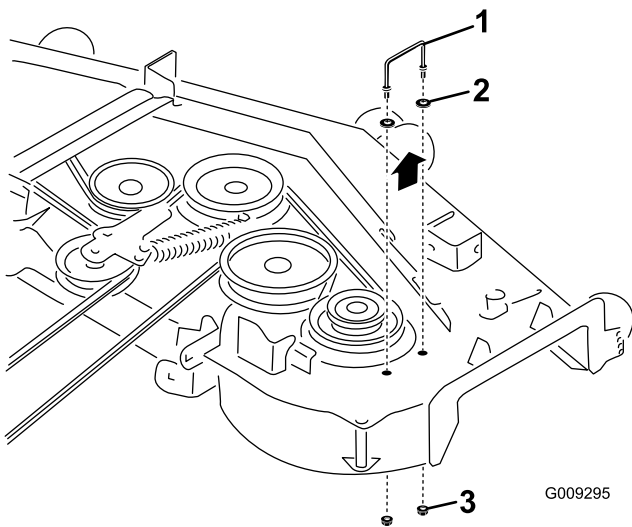


Figure 3

60- and 72-inch mower deck shown

1. Right belt cover bracket
2. Washer
3. Flange nut

5. Store the right belt cover, bracket, and hardware for later use if you remove the bagger blower and pulley.
6. Remove and retain the deck belt.

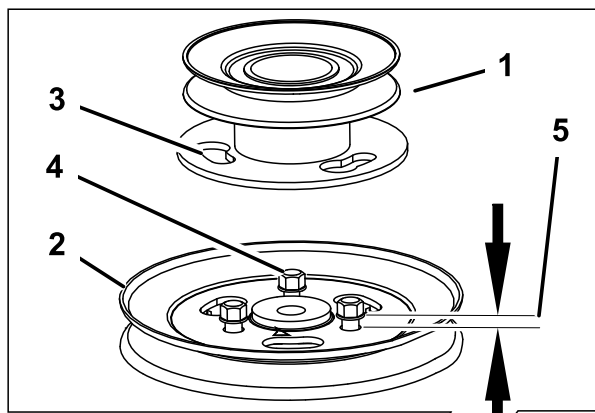


Figure 4

- | | | |
|----------------------|------------------|-------------------------------|
| 1. Pulley assembly | 3. Locking slots | 5. Clearance—5 mm (3/16 inch) |
| 2. Mower-deck pulley | 4. Bolt heads | |

5. Install the deck belt.

For Units without Bolts

1. Remove the nuts on the existing mower-deck pulley (Figure 5).
2. Install the new pulley assembly onto the mower-deck pulley bolts (Figure 5).
3. Turn the pulley to lock it into position (Figure 5).
4. After the new pulley assembly is in position, install the nuts to secure new pulley assembly.

Note: Torque the nuts to 28 to 34 N-m (21 to 25 ft-lb).

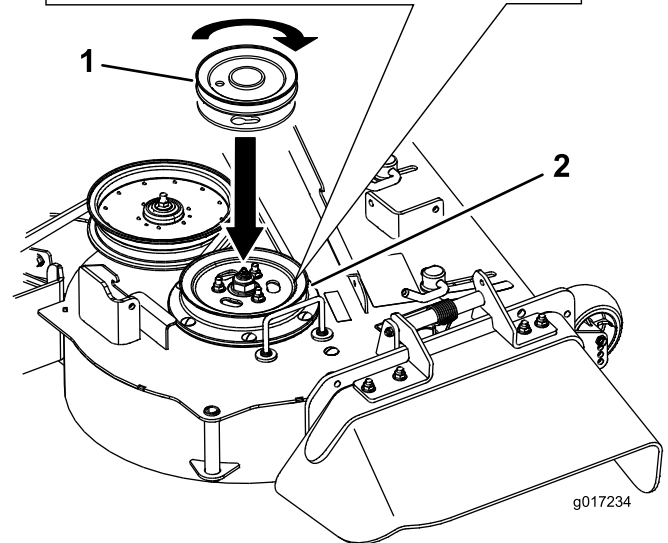
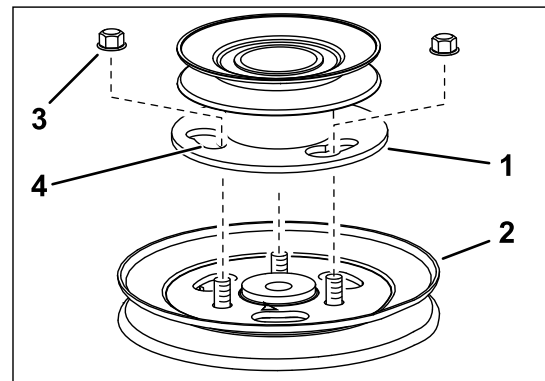


Figure 5

- | | | | |
|--------------------|----------------------|------------------|---------|
| 1. Pulley assembly | 2. Mower-deck pulley | 3. Locking slots | 4. Nuts |
|--------------------|----------------------|------------------|---------|

5. Install the deck belt.

4

Installing the New Belt Cover Bracket

48- and 52-inch Mowers

Parts needed for this procedure:

1	Belt cover bracket
2	Carriage bolt (1/4 x 3/4 inches)
2	Locknut (1/4 inch)

Procedure

Install the belt cover bracket with 2 carriage bolts (1/4 x 3/4 inches) and 2 locknuts (1/4 inch) as shown in [Figure 6](#).

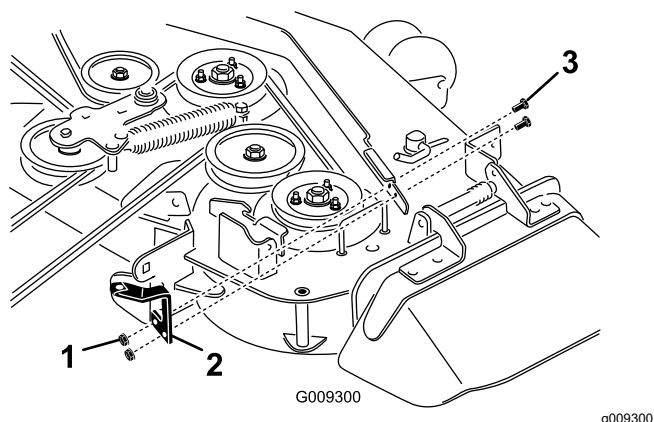


Figure 6

1. Locknut, (1/4 inch)
2. Bracket for 48- and 52-inch mower decks
3. Carriage bolt (1/4 x 3/4 inches)

5

Installing the New Belt Cover Bracket

60- and 72-inch Mowers

Parts needed for this procedure:

1	Belt cover bracket
2	Carriage bolt (1/4 x 3/4 inches)
2	Locknut (1/4 inch)

Procedure

Install the belt cover bracket with 2 carriage bolts (1/4 x 3/4 inches) and 2 locknuts (1/4 inch) as shown in [Figure 7](#).

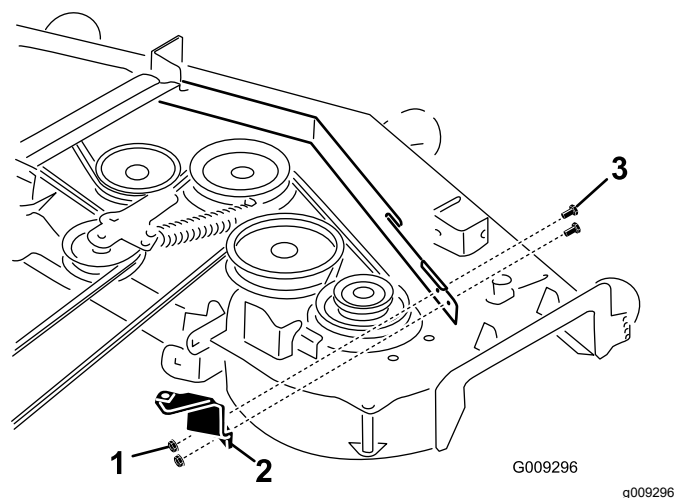


Figure 7

1. Locknut, (1/4 inch)
2. Bracket for 60- and 72-inch mower decks
3. Carriage bolt (1/4 x 3/4 inches)

6

Installing the Blower Assembly, Bagger Belt, Spring and Blower-Belt Cover

Parts needed for this procedure:

1	Blower assembly
1	Bagger belt
1	Blower belt cover
1	Spring

Procedure

Refer to the bagger *Operator's Manual* for the correct procedure to install the blower, bagger belt, spring, and blower-belt cover.

Notes:



Count on it.