



**Count on it.**

Form No. 3438-500 Rev B

# Operator's Manual

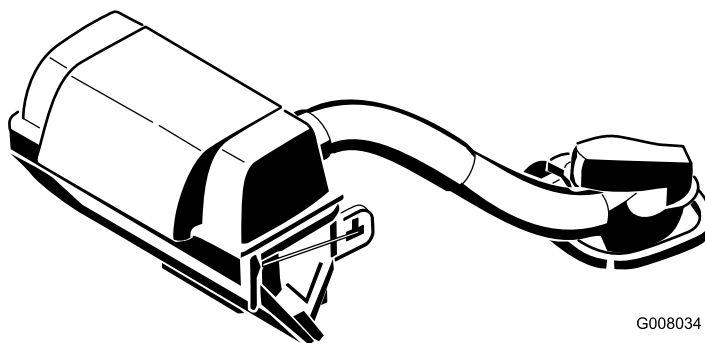
## 48in, 52in, 60in, or 72in E-Z Vac™ DFS Collection System

### Z Master® G3 Mower

Model No. 78556—Serial No. 400000000 and Up

Model No. 78566—Serial No. 405700000 and Up

Model No. 78567—Serial No. 405700000 and Up



G008034



## ⚠ WARNING

### CALIFORNIA Proposition 65 Warning

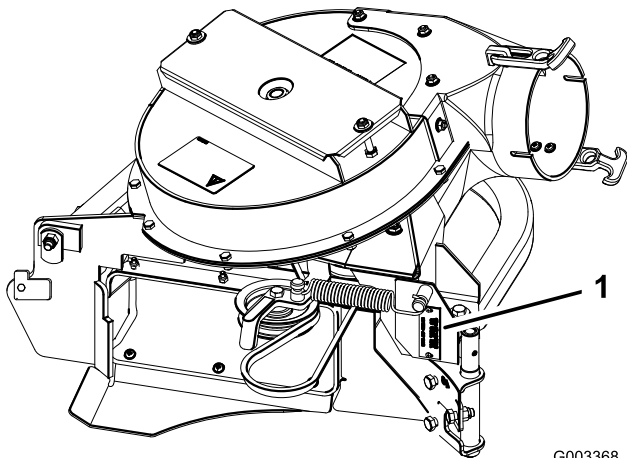
Use of this product may cause exposure to chemicals known to the State of California to cause cancer, birth defects, or other reproductive harm.

# Introduction

Read this information carefully to learn how to operate and maintain your product properly and to avoid injury and product damage. You are responsible for operating the product properly and safely.

You may contact Toro directly at [www.Toro.com](http://www.Toro.com) for product safety and operation training materials, accessory information, help finding a dealer, or to register your product.

Whenever you need service, genuine Toro parts, or additional information, contact an Authorized Service Dealer or Toro Customer Service and have the model and serial numbers of your product ready. [Figure 1](#), [Figure 2](#) and [Figure 3](#) identifies the location of the model and serial numbers on the product. Write the numbers in the space provided.



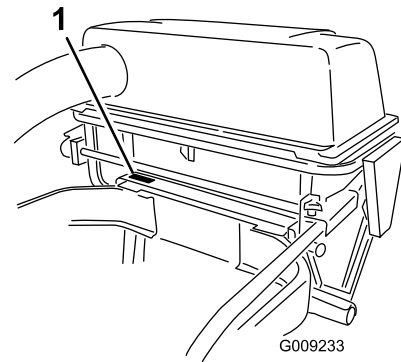
G003368  
g003368

Figure 1

1. Collection system model and serial number location

Model No. \_\_\_\_\_

Serial No. \_\_\_\_\_



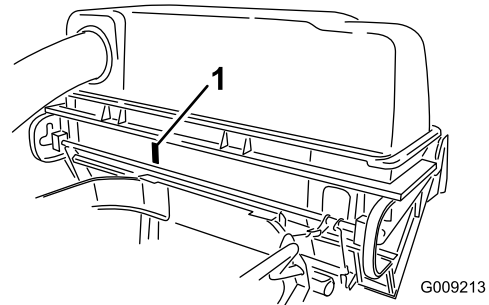
G009233

g009233

Figure 2

48- and 52-inch bagger serial number

1. Bagger model and serial number location



G009213

g009213

Figure 3

60- and 72-inch bagger serial number

1. Bagger model and serial number location

Model No. \_\_\_\_\_

Serial No. \_\_\_\_\_

This manual identifies potential hazards and has safety messages identified by the safety alert symbol ([Figure 4](#)), which signals a hazard that may cause serious injury or death if you do not follow the recommended precautions.



g000502

Figure 4

1. Safety alert symbol

This manual uses 2 words to highlight information. **Important** calls attention to special mechanical information and **Note** emphasizes general information worthy of special attention.

# Contents

Safety .....	4
Towing Safety .....	4
Safety and Instructional Decals .....	5
Setup .....	8
1 Preparing the Mower.....	10
2 Installing the Side Bumpers.....	10
3 Installing the Bagger Mounting Brackets.....	10
4 Installing the Handle Assembly and Bracket .....	11
5 Installing the Handle Assembly and Bracket for 48- and 52-inch Mowers .....	12
6 Installing the Bagger Assembly .....	12
7 Installing the Muffler Deflector .....	14
8 Routing the Blower Belt into the Blower Assembly .....	14
9 Installing the Blower Assembly.....	16
10 Installing the Discharge Tubes .....	18
11 Installing the Belt Cover.....	22
12 Installing the Weights.....	22
13 Installing the Bumpers .....	24
14 Adjusting the Parking Brake .....	25
15 Checking the Tire Pressure .....	26
Operation .....	26
Adjusting the Baffle.....	27
Emptying the Bagger .....	28
Clearing Obstructions from the Collection System.....	28
Removing the Bagger .....	28
Using the Grass Deflector.....	29
Transporting Machines .....	29
Operating Tips .....	29
Maintenance .....	31
Recommended Maintenance Schedule(s) .....	31
Cleaning the Bagger Screen.....	31
Cleaning the Collection System .....	31
Inspecting the Blower Belt .....	32
Replacing the Blower Belt for 60- and 72-inch Mowers .....	32
Replacing the Blower Belt for 48- and 52-inch Mowers .....	32
Checking and Adjusting the Blower Latch.....	33
Greasing the Idler Arm and Handle Pivot.....	33
Inspecting the Collection System .....	34
Adjusting the Closed Door for 60- and 72-inch Mowers .....	34
Adjusting the Open Door for 60- and 72-inch Mowers .....	35
Adjusting the Latches for 60- and 72-inch Mowers .....	35
Adjusting the Arm Position for 48- and 52-inch Mowers.....	35
Adjusting the Closed Door for 48- and 52-inch Mowers .....	36

Adjusting the Open Door for 48- and 52-inch Mowers .....	37
Adjusting the Parking Brake.....	39
Inspecting the Mower Blades .....	39
Installing the Mower Blades .....	39
Installing the Grass Deflector .....	39
Storage .....	40
Troubleshooting .....	41

# Safety

The following list contains safety information specific to Toro products and other safety information you must know.

- Become familiar with the safe operation of the equipment, with the operator controls, and safety signs.
- Use extra care with grass catchers or other attachments. These can change the operating characteristics and the stability of the machine.
- Follow the manufacturer's recommendations for adding or removing wheel weights or counterweights to improve stability.
- Do not use a grass catcher on steep slopes. A heavy grass catcher could cause loss of control or overturn the machine.
- Slow down and use extra care on hillsides. Be sure to travel in the recommended direction on hillsides. Turf conditions can affect the stability of the machine. Use extreme caution while operating near drop-offs.
- Keep all movement on slopes slow and gradual. Do not make sudden changes in speed, direction, or turning.
- The grass catcher can obstruct the view to the rear. Use extra care when operating in reverse.
- Use care when loading or unloading the machine into a trailer or truck.
- Never operate with the discharge deflector raised, removed or altered, unless using a grass catcher.
- Keep hands and feet away from moving parts. Do not make adjustments with the engine running.
- Park the machine on level ground, disengage the drives, chock the wheels, and shut off the engine before leaving the operator's position for any reason including emptying the grass catcher or unclogging the chute.
- If you remove the grass catcher, be sure to install any discharge deflector or guard that might have been removed to install the grass catcher. Do not operate the mower without either the entire grass catcher or the grass deflector in place.
- Shut off the engine before removing the grass catcher or unclogging the chute.
- Do not leave grass in the grass catcher for extended periods of time.
- Grass catcher components are subject to wear, damage and deterioration, which could expose you to moving parts or allow objects to be thrown. Frequently check components and replace with

the manufacturer's recommended parts, when necessary.

## Towing Safety

- Do not attach towed equipment except at the hitch point.
- Follow the attachment manufacturer's recommendation for weight limits for towed equipment and towing on slopes.
- Never allow children or others in or on towed equipment.
- On slopes, the weight of the towed equipment may cause loss of traction and loss of control. Reduce towed weight and slow down.
- Stopping distance increases with the weight of the towed load. Travel slowly and allow extra distance to stop.
- Make wide turns to keep the attachment clear of the machine.
- Do not tow a load that weighs more than the towing machine.

# Safety and Instructional Decals

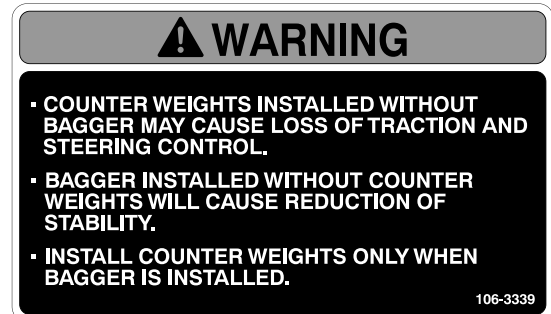


Safety decals and instructions are easily visible to the operator and are located near any area of potential danger. Replace any decal that is damaged or lost.



1-653554

decal1-653554



106-3339

decal106-3339



1-653558

decal1-653558



126-4659

decal126-4659

1. Warning—hot pulley; allow to cool.



98-5954

decal98-5954



106-5517

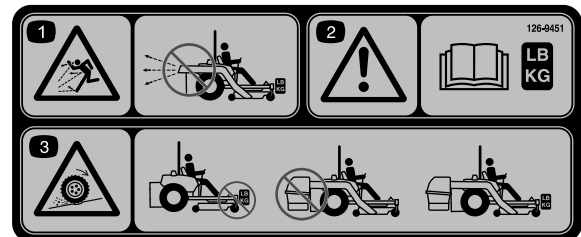
decal106-5517

1. Warning—Do not touch the hot surface.



106-0871

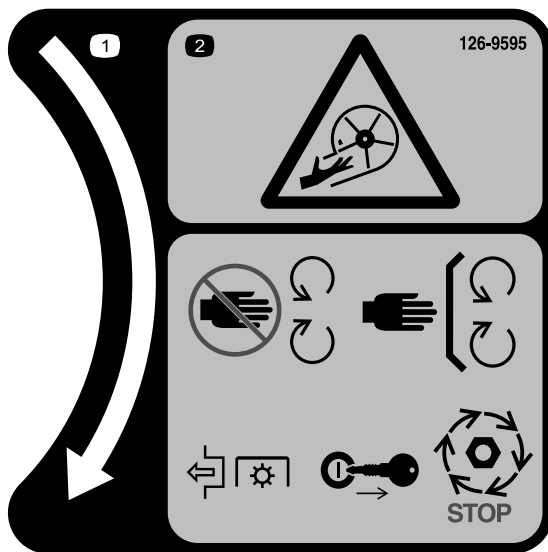
decal106-0871



126-9451

decal126-9451

1. Thrown objects hazard—Do not run the blower without the entire collection system installed and latched.
2. Warning—Read the *Operator's manual* about counterbalance weight installation.
3. Loss of traction and steering or reduced stability hazard—Ez Vac counterbalance weight(s) installed without the Ez Vac may cause loss of traction and steering control. The Ez Vac installed without the Ez Vac counterbalance weight(s) can cause reduced stability. Install weight(s) only when the Ez Vac is installed.



decal126-9595

**126-9595**

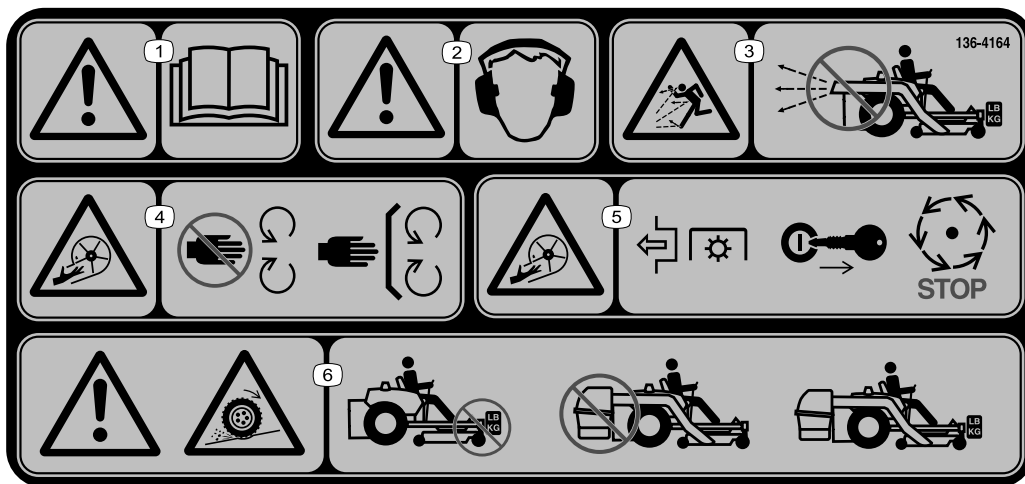
1. Rotation indicator
2. Impeller/Rotating Blades hazard—Keep hands away from moving parts. Keep all safety devices in place and working. Do not reach into the blower unless the rotation indicator has stopped. Disengage the PTO, shut off the engine, remove the key, and wait for all moving parts to stop.

**⚠ WARNING: Cancer and Reproductive Harm - [www.P65Warnings.ca.gov](http://www.P65Warnings.ca.gov).**  
For more information, please visit [www.ttcocaprop65.com](http://www.ttcocaprop65.com)

133-8061

decal133-8061

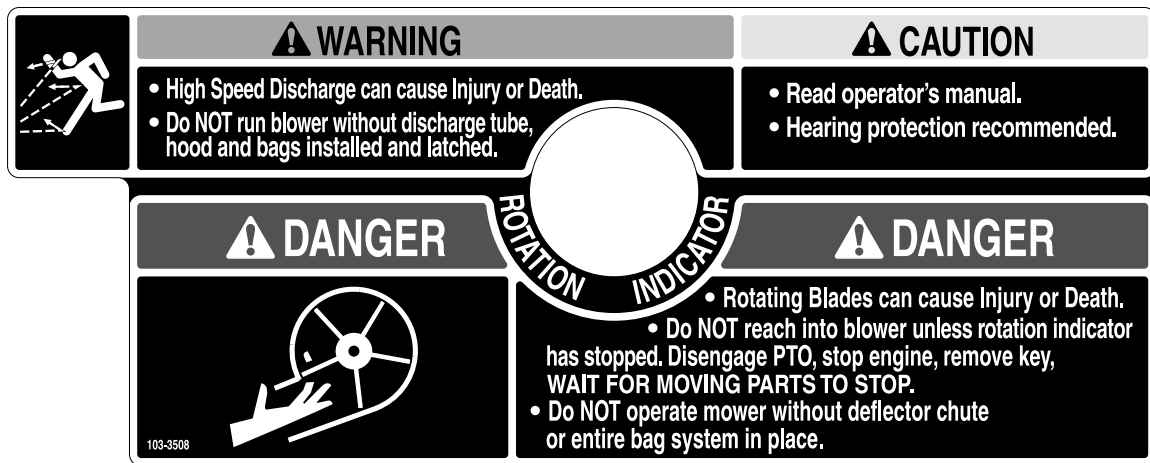
**133-8061**



decal136-4164

**136-4164**

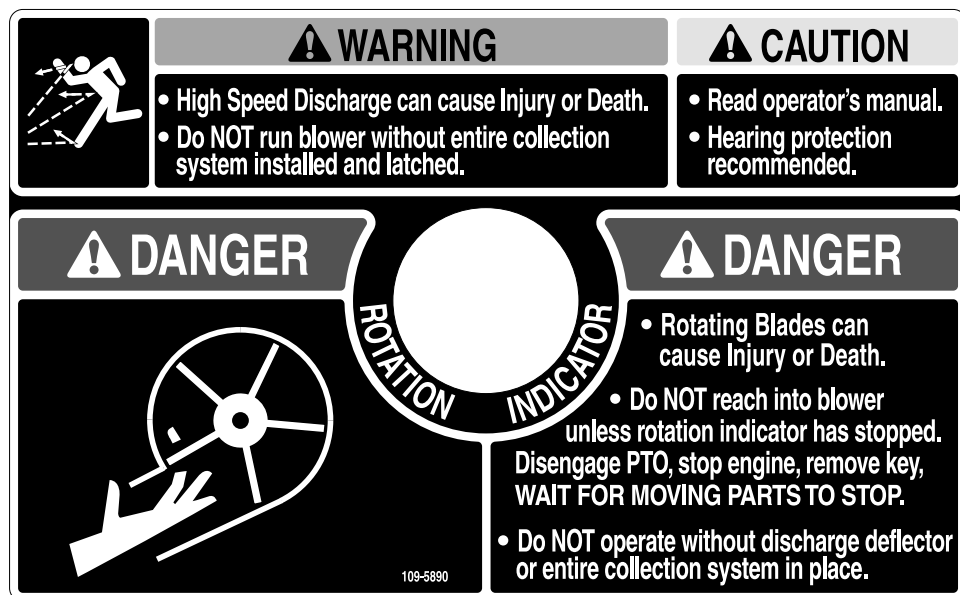
1. Warning—read the *Operator's Manual*.
2. Warning—hearing protection must be worn.
3. Thrown object hazard—do not operate the blower without the entire system installed and latched.
4. Cutting/dismemberment hazard, impeller—keep away from moving parts; keep all guards and covers in place.
5. Cutting/dismemberment hazard, impeller—disengage the PTO, remove the key, and wait for all moving parts to stop.
6. Warning; loss of traction—do not operate with only counterbalance weights installed; do not operate with only E-Z Vac installed; operate only with both E-Z Vac and counterbalance weights installed.



decal103-3508

**103-3508**

48-inch and 52-inch decks only



decal109-5890

**109-5890**

60-inch and 72-inch decks only

# Setup

## Loose Parts

Use the chart below to verify that all parts have been shipped.

Procedure	Description	Qty.	Use
<b>1</b>	No parts required	–	Prepare the mower.
<b>2</b>	Left bumper Right bumper Carriage bolt (3/8 x 1-1/4 inches) Flange nut (large flange–3/8 inch)	1 1 2 6	Install the side bumpers.
<b>3</b>	Upper mounting bracket Lower mounting bracket Carriage bolt (3/8 x 1-1/4 inches) Carriage bolt (1/2 x 2–1/2 inches) Flange nut (large flange–3/8 inch) Flange nut (1/2 inch)	1 1 4 2 4 2	Install the bagger mounting brackets.
<b>4</b>	Handle assembly Handle bracket Carriage bolt (3/8 x 1-1/4 inches) Clevis-pin spring Flange nut (large flange–3/8 inch)	1 1 4 1 4	Install the handle assembly (for 60- and 72-inch mowers).
<b>5</b>	Hood assembly Knob Carriage bolt	1 1 1	Install the hood assembly.
<b>6</b>	Bagger assembly Pin and hairpin cotter assembly	1 2	Install the bagger assembly.
<b>7</b>	Muffler deflector Flange nut (small flange–3/8 inch) Carriage bolt (3/8 x 1-1/4 inches)	1 2 2	Install the muffler deflector.
<b>8</b>	Blower belt (from the Blower and Drive Kit)	1	Route the blower belt into the blower assembly.
<b>9</b>	Blower assembly (from the Blower and Drive Kit) Spring (from the Blower and Drive Kit)	1 1	Install the blower assembly.
<b>10</b>	Upper tube Lower tube Bolt (#10 x 3/4 inches) Locknut (#10) Washer (7/32 inch)	1 1 3 3 3	Install the discharge tubes.
<b>11</b>	Belt cover (from the Blower and Drive Kit)	1	Install the belt cover.



Procedure	Description	Qty.	Use
<b>12</b>	Caster weight (if needed)	2	Install the weights.
	Clevis pin	2	
	Hairpin cotter	2	
	Lock washer (3/8 inch)	6	
	Weight-mount bracket	1	
	Bolt (3/8 x 1 inch)	6	
	Flat washer (3/8 inch)	6	
	Flange nut (small flange–3/8 inch)	3	
	Carriage bolt (5/16 x 3/4 inch)	2	
	Flange nut (5/16 inch)	2	
	Front weight (48-inch, 52-inch, and 60-inch decks)	3	
	Front weight [72-inch decks (serial number 406294344 and below)]	1	
	Front weight [72-inch decks (serial number 406294345 and above)]	2	
	Tap bolt (3/8 x 1-3/4 inches)	2	
	Nut (3/8 inch)	2	
<b>13</b>	Bumper	2	Install the bumpers (for machines with MyRide™ suspension system).
	Spacer	2	
	Locknut (5/16 inch)	2	
<b>14</b>	No parts required	–	Adjust the parking brake.
<b>15</b>	No parts required	–	Check the tire pressure.

**Important:** Do not use drive or caster Tweels with this attachment. If the machine is equipped with drive or caster Tweels, replace them with factory pneumatic drive tires or factory pneumatic or semi-pneumatic caster tires.

**Note:** Determine the left and right sides of the machine from the normal operating position.

# 1

## Preparing the Mower

No Parts Required

### Procedure

Perform the following procedure to prepare the mower for attaching the blower and finishing kit.

1. Disengage the PTO, move the motion-control levers to the NEUTRAL-LOCKED position and engage the parking brake.
2. Shut off the engine, remove the key, and wait for all moving parts to stop before leaving the operating position.
3. Pull the spark plug wires.
4. Repair all bent or damaged areas of mower deck and replace any missing parts.
5. Clean the mower of any debris on the deck or rear part of the mower to ease installation.

# 2

## Installing the Side Bumpers

Parts needed for this procedure:

1	Left bumper
1	Right bumper
2	Carriage bolt (3/8 x 1-1/4 inches)
6	Flange nut (large flange-3/8 inch)

### Procedure

1. Remove the nuts and bolts holding the side bumpers to the machine (Figure 5).

**Note:** Discard all nuts and only the 1 bolt removed from each side

**Note:** For 60- and 72-inch mowers, do not install the bolt and flange nut for the left bumper near the ROPS. You will install them when you install the handle bracket in a following procedure.

2. Install the new left and right bumpers with 2 carriage bolts (3/8 x 1-1/4 inches), 4 previously removed carriage bolts, and 6 flange nuts (3/8 inch) as shown in Figure 5.

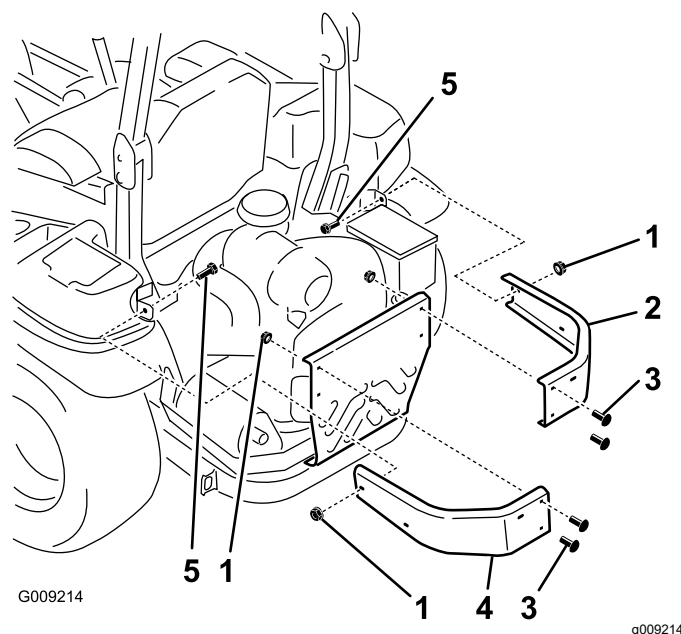


Figure 5

- |                                       |                              |
|---------------------------------------|------------------------------|
| 1. Flange nut (large flange-3/8 inch) | 4. Left bumper               |
| 2. Right bumper                       | 5. Bolt (3/8 x 1-1/4 inches) |
| 3. Use existing bolts                 |                              |

# 3

## Installing the Bagger Mounting Brackets

Parts needed for this procedure:

1	Upper mounting bracket
1	Lower mounting bracket
4	Carriage bolt (3/8 x 1-1/4 inches)
2	Carriage bolt (1/2 x 2-1/2 inches)
4	Flange nut (large flange-3/8 inch)
2	Flange nut (1/2 inch)

### Procedure

**Note:** For 60- and 72-inch mowers, do not install the bolt and flange nut for the left side of the lower mounting bracket. This will be installed when installing the handle bracket in the following procedure.

1. Install the lower mounting bracket to the machine frame with 4 carriage bolts (3/8 x 1-1/4 inches) and 4 flange nuts (large flange-3/8 inch) as shown in [Figure 6](#).

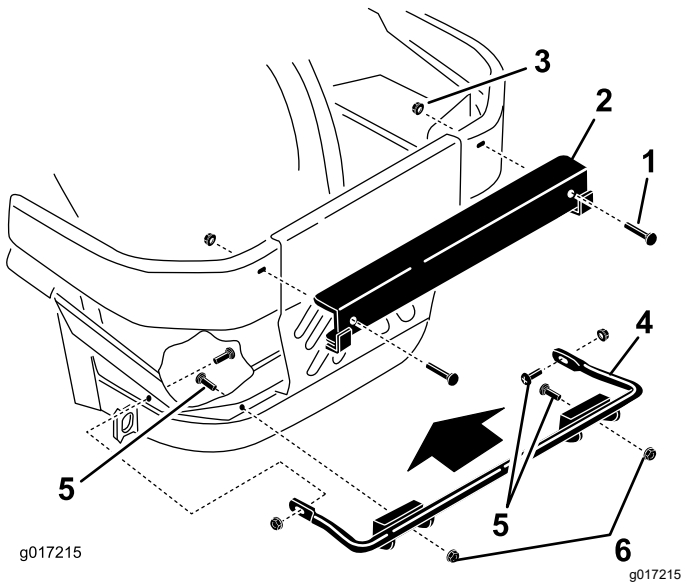


Figure 6

- |                                       |                                       |
|---------------------------------------|---------------------------------------|
| 1. Carriage bolt (1/2 x 2-1/2 inches) | 4. Lower mounting bracket             |
| 2. Upper mounting bracket             | 5. Carriage bolt (3/8 x 1-1/4 inches) |
| 3. Flange nut (1/2 inch)              | 6. Flange nut (large flange-3/8 inch) |

2. Install the upper mounting bracket to the left and right bumpers with 2 carriage bolts (1/2 x 2-1/2 inches) and 2 flange nuts (1/2 inch) as shown in [Figure 6](#).

# 4

## Installing the Handle Assembly and Bracket

### 60- and 72-inch Mowers

Parts needed for this procedure:

1	Handle assembly
1	Handle bracket
4	Carriage bolt (3/8 x 1-1/4 inches)
1	Clevis-pin spring
4	Flange nut (large flange-3/8 inch)

### Procedure

1. Remove the clevis-pin spring from the bagger-arm assembly (see [Figure 11](#)).
2. Install the handle assembly pin into the handle bracket and connect them together with a carriage bolt (3/8 x 1-1/4 inches) and a flange nut (large flange-3/8 inch).

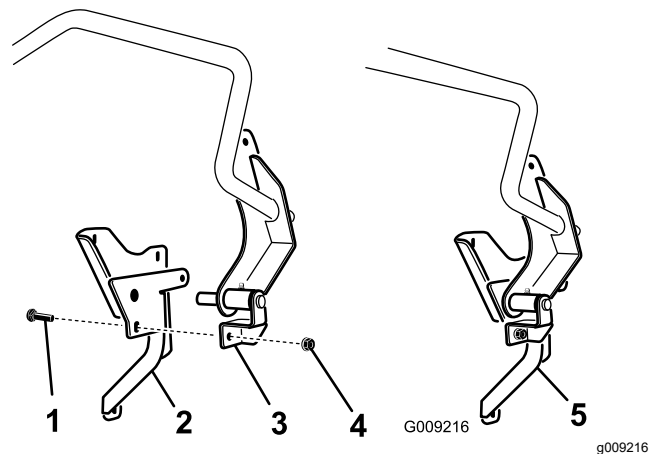
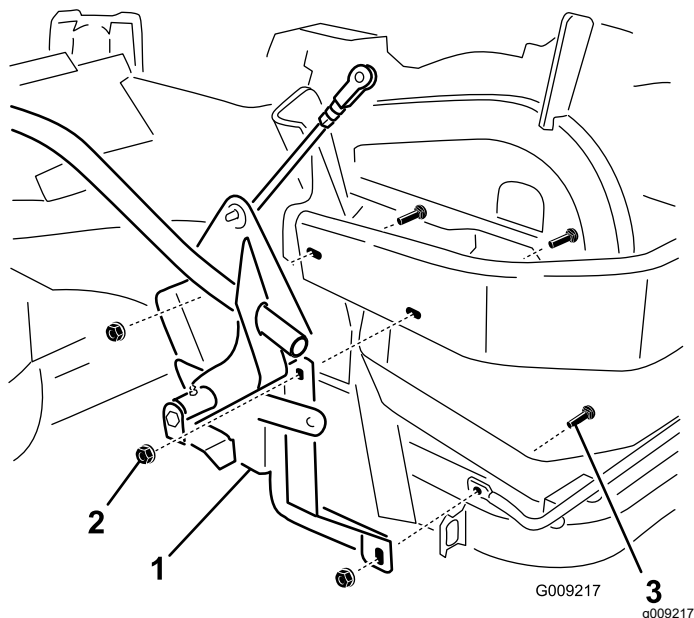


Figure 7

- |                              |                                          |
|------------------------------|------------------------------------------|
| 1. Bolt (3/8 x 1-1/4 inches) | 4. Flange nut (large flange-3/8 inch)    |
| 2. Handle bracket            | 5. Assembled handle and bracket assembly |
| 3. Handle assembly           |                                          |

3. Install the handle and bracket assembly to the side of the machine with 3 carriage bolts (3/8 x 1-1/4 inches) and 3 flange nuts (large flange-3/8 inch) as shown in [Figure 8](#).

**Note:** Ensure that the bolts go through the left bumper and the lower bagger bracket and connect them to the side of the machine.



**Figure 8**

1. Handle and bracket assembly
2. Flange nut (large flange-3/8 inch)
3. Bolt (3/8 x 1-1/4 inches)

# 5

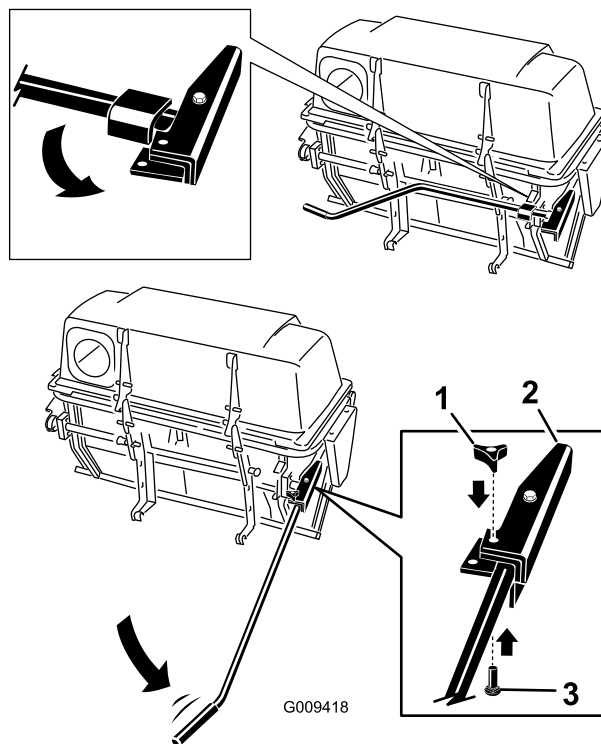
## Installing the Handle Assembly and Bracket for 48- and 52-inch Mowers

**Parts needed for this procedure:**

1	Hood assembly
1	Knob
1	Carriage bolt

### Procedure

Pivot the handle out into the handle bracket and secure it with a carriage bolt and knob ([Figure 9](#)).



**Figure 9**

1. Knob
2. Handle bracket
3. Carriage bolt

# 6

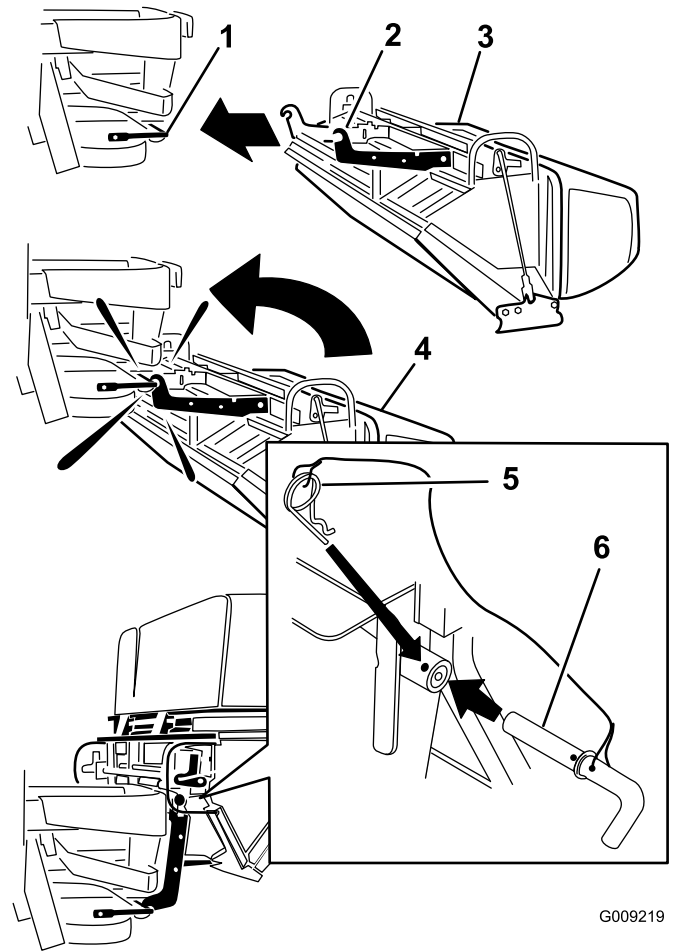
## Installing the Bagger Assembly

Parts needed for this procedure:

1	Bagger assembly
2	Pin and hairpin cotter assembly

### Procedure

1. Position the bagger on its back (Figure 10).
2. Slide the hooks onto the lower mounting bracket (Figure 10).
3. Rotate the bagger up on the lower bagger mounting bracket.
4. Align the hole in the bagger with the upper mounting bracket (Figure 10).
5. Install the pin and secure it with the hairpin cotter on both sides (Figure 10).



G009219

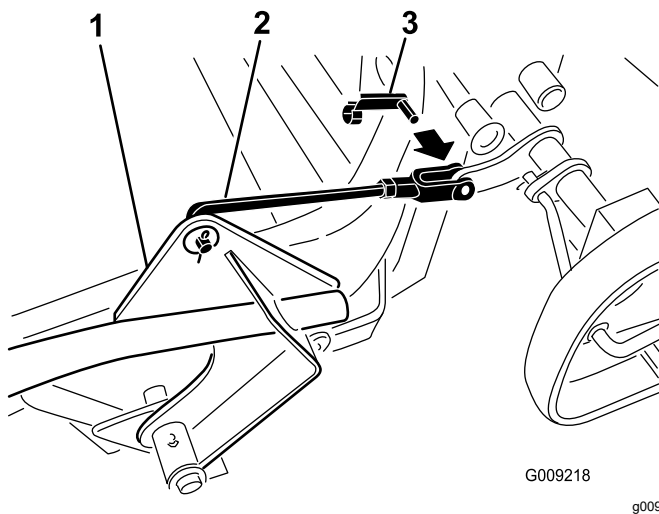
g009219

**Figure 10**

- |                           |                                        |
|---------------------------|----------------------------------------|
| 1. Lower mounting bracket | 4. Rotate bagger up                    |
| 2. Hook                   | 5. Hairpin cotter connected to lanyard |
| 3. Bagger                 | 6. Pin connected to lanyard            |

6. Rotate the bagger-handle linkage up to the bagger assembly and secure it with a clevis-pin spring (Figure 11).

**Note:** Loosen and rotate the yoke if needed to align it with the bagger assembly.



**Figure 11**

- |                          |                      |
|--------------------------|----------------------|
| 1. Bagger-arm assembly   | 3. Clevis-pin spring |
| 2. Bagger-handle linkage | 4. Yoke              |

# 7

## Installing the Muffler Deflector

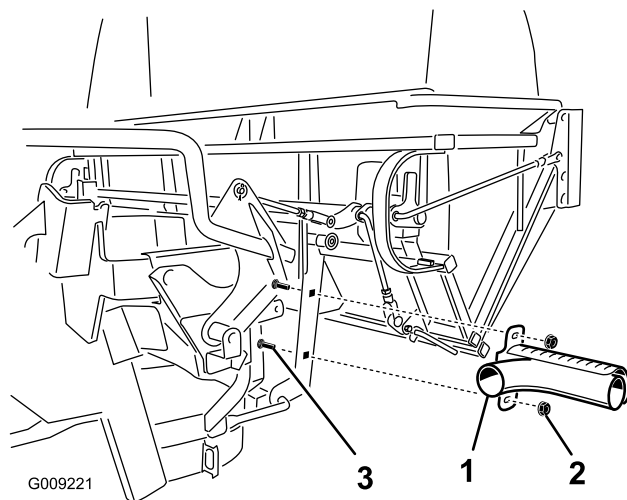
### Parts needed for this procedure:

1	Muffler deflector
2	Flange nut (small flange—3/8 inch)
2	Carriage bolt (3/8 x 1-1/4 inches)

## Procedure

Install the muffler deflector to the side of the bagger frame ([Figure 12](#)).

**Note:** Ensure that the muffler deflector is positioned over the tail pipe on the muffler.



**Figure 12**

60- and 72-inch bagger shown

- |                                       |                                       |
|---------------------------------------|---------------------------------------|
| 1. Muffler deflector                  | 3. Carriage bolt (3/8 x 1-1/4 inches) |
| 2. Flange nut (small flange—3/8 inch) |                                       |

# 8

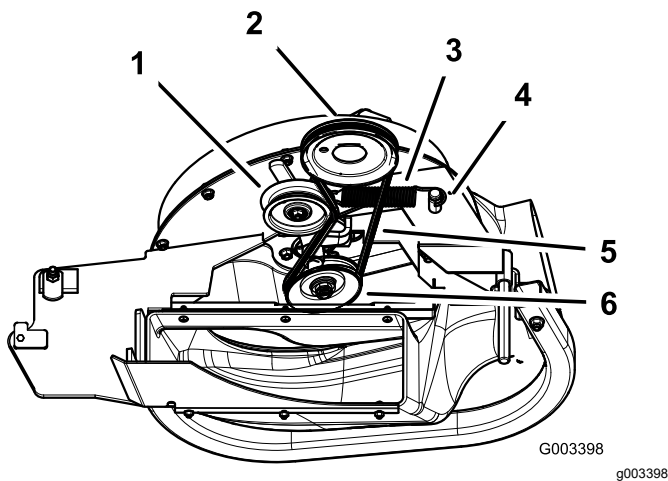
## Routing the Blower Belt into the Blower Assembly

Parts needed for this procedure:

1	Blower belt (from the Blower and Drive Kit)
---	---------------------------------------------

### Procedure

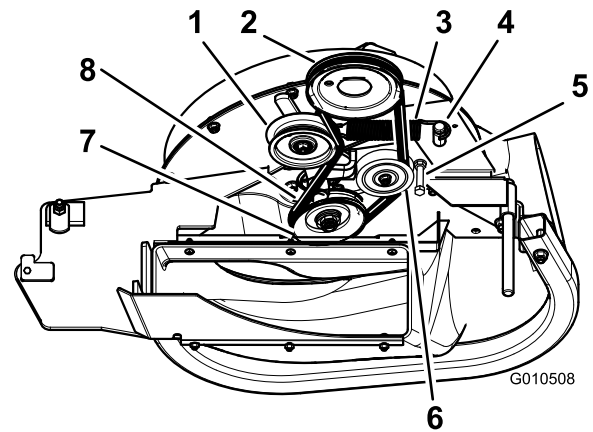
- For 60- and 72-inch mowers, install the belt around the blower pulley ([Figure 13](#)).



**Figure 13**

Blower for 60- and 72-inch Mowers

- |                      |                  |
|----------------------|------------------|
| 1. Idler pulley      | 4. Peg           |
| 2. Mower-deck pulley | 5. Belt          |
| 3. Spring            | 6. Blower pulley |



**Figure 14**

Blower for 48- and 52-inch mowers

- |                               |                       |
|-------------------------------|-----------------------|
| 1. Spring-loaded idler pulley | 5. Belt guide         |
| 2. Mower-deck pulley          | 6. Fixed-idler pulley |
| 3. Spring                     | 7. Blower pulley      |
| 4. Peg                        | 8. Belt               |

- For 48- and 52-inch mowers, loosen the belt guide ([Figure 14](#)).
- Install the belt around the blower pulley and fixed-idler pulley ([Figure 14](#)).
- Tighten the belt guide.

# 9

## Installing the Blower Assembly

Parts needed for this procedure:

1	Blower assembly (from the Blower and Drive Kit)
1	Spring (from the Blower and Drive Kit)

### Procedure

#### **⚠ WARNING**

An uncovered discharge opening could allow the lawn mower to throw objects at you or bystanders, resulting in serious injury. Also, contact with the blade could occur.

- Never operate the lawn mower unless you install a cover plate, a mulch plate, or a grass chute and catcher.
- Make sure that the grass deflector is installed when you remove the grass chute and catcher.

1. Remove the side-discharge chute from the mower deck (Figure 15).

**Note:** Save all the hardware and the side-discharge chute. Install the side-discharge chute when the bagger and blower are removed.

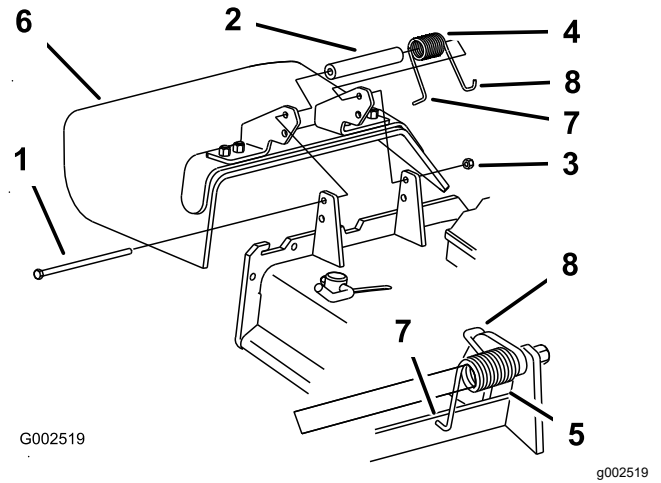
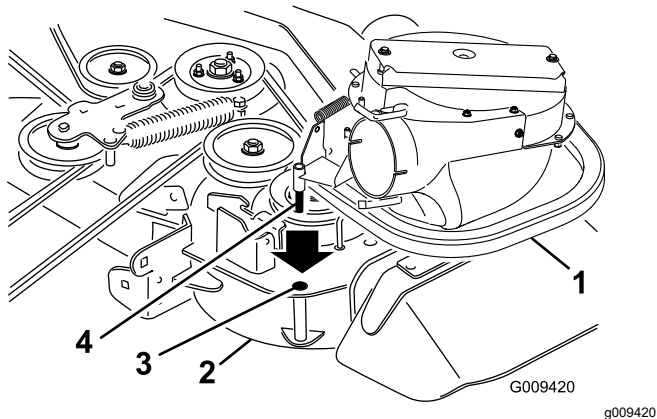


Figure 15

1. Bolt
2. Spacer
3. Locknut
4. Spring
5. Spring installed
6. Grass deflector
7. L-end of spring (Place it behind the deck edge before installing the bolt)
8. J-hook end of the spring



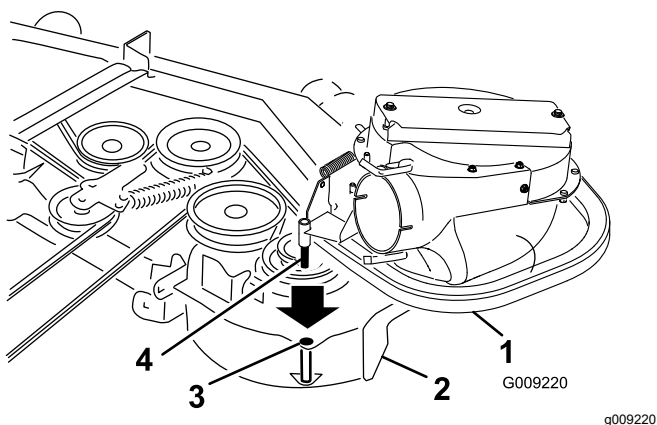
- Slide the blower-assembly peg into the pivot hole (Figure 16 or Figure 17).



**Figure 16**

48- and 52-inch mower deck shown

- |                    |                        |
|--------------------|------------------------|
| 1. Blower assembly | 3. Pivot hole          |
| 2. Mower deck      | 4. Blower-assembly peg |



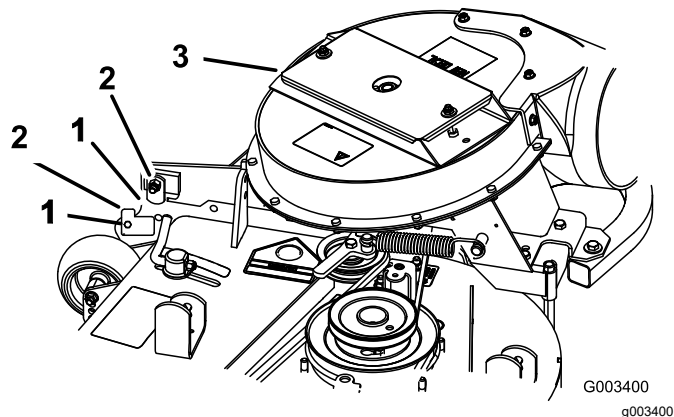
**Figure 17**

60- and 72-inch mower deck shown

- |                    |                        |
|--------------------|------------------------|
| 1. Blower assembly | 3. Pivot hole          |
| 2. Mower deck      | 4. Blower-assembly peg |

- Close the blower assembly to see if the latches are adjusted correctly (Figure 18).

**Note:** Loosen or tighten the bolt so the latches firmly hold the blower assembly against the mower deck but can be released by hand

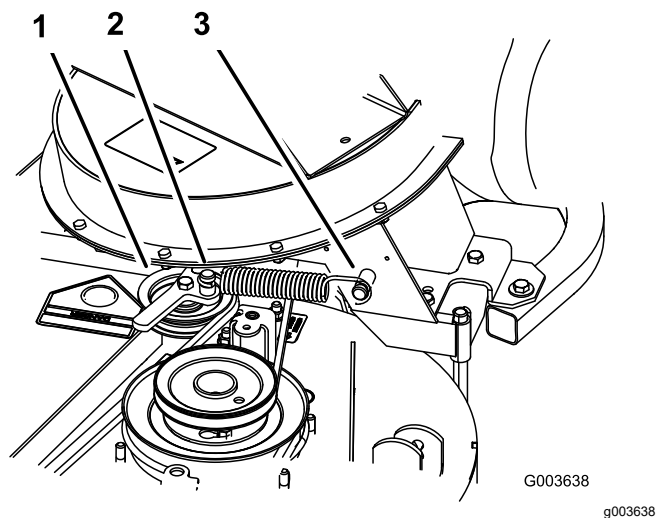


**Figure 18**

- |          |                    |
|----------|--------------------|
| 1. Latch | 3. Blower assembly |
| 2. Bolt  |                    |

- Install the spring as shown in Figure 19.

**Note:** Make sure that the hooks are in the correct position.

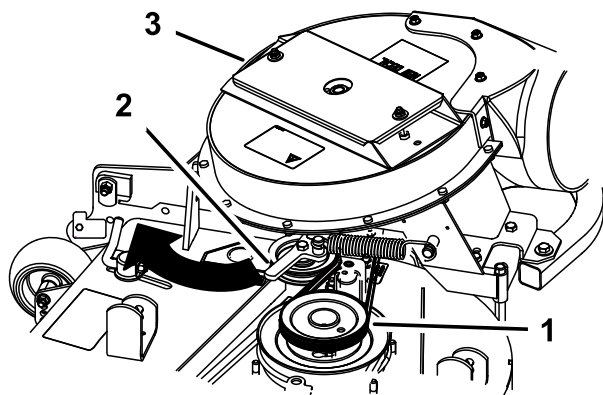


**Figure 19**

- |                               |                  |
|-------------------------------|------------------|
| 1. Spring-loaded idler pulley | 3. Long-hook end |
| 2. Short-hook end             |                  |

5. Pull the spring-loaded idler pulley back and route the belt around the mower-deck pulley ([Figure 20](#)).

**Note:** Ensure that the belt is routed around the blower pulleys correctly



G003399

g003399

**Figure 20**

1. Mower-deck pulley
2. Spring-loaded Idler pulley
3. Blower

# 10

## Installing the Discharge Tubes

**Parts needed for this procedure:**

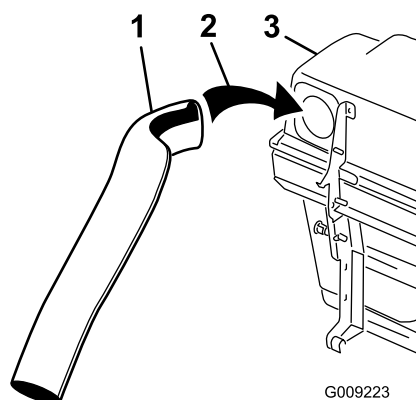
1	Upper tube
1	Lower tube
3	Bolt (#10 x 3/4 inches)
3	Locknut (#10)
3	Washer (7/32 inch)

## Procedure

**Important:** Make sure that the mower deck is in the lowest height-of-cut position while installing the discharge tubes.

**Note:** Remember to replace the grass deflector when the bagger is removed from the mower. Refer to [Installing the Grass Deflector \(page 39\)](#).

1. Disengage the PTO and set the parking brake.
2. Stop the engine, remove the key, and wait for all moving parts to stop before leaving the operating position.
3. Lower the mower deck to the lowest height-of-cut position.
4. Install the upper tube into the bagger opening and pull it back out so that the rubber seal is protruding out ([Figure 21](#)).



G009223

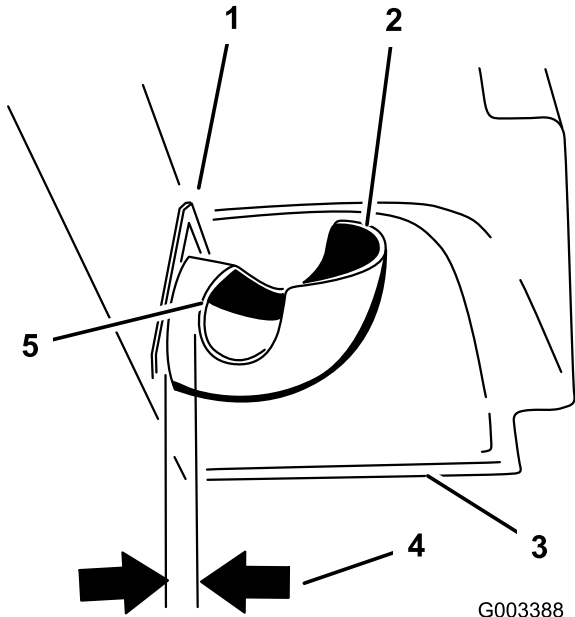
g009223

**Figure 21**

1. Upper tube
2. Bagger opening
3. Bagger hood

5. Measure the distance the tube is inside the hood.

**Note:** Measure from the hood plate to the edge of the tube as shown in [Figure 22](#). This distance needs to be 19 mm (3/4 inch).



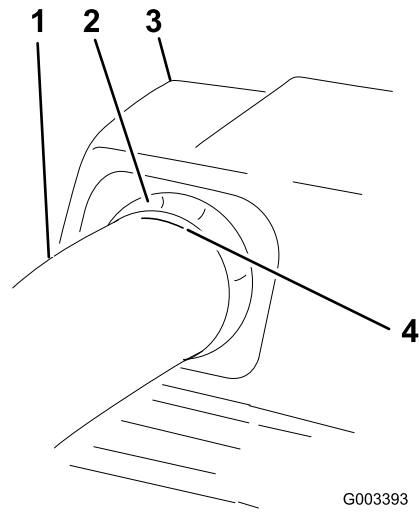
**Figure 22**

- |                              |                     |
|------------------------------|---------------------|
| 1. Hood plate                | 4. 3/4 inch (19 mm) |
| 2. Upper tube                | 5. Edge of tube     |
| 3. Hood in the down position |                     |

6. Once the 19 mm (3/4 inch) measurement has been achieved, mark the upper tube on the outside where the rubber seal protrudes out ([Figure 23](#)).

**Note:** This is marked to ensure the correct position for the upper tube when drilling the holes and connecting the upper and lower tubes.

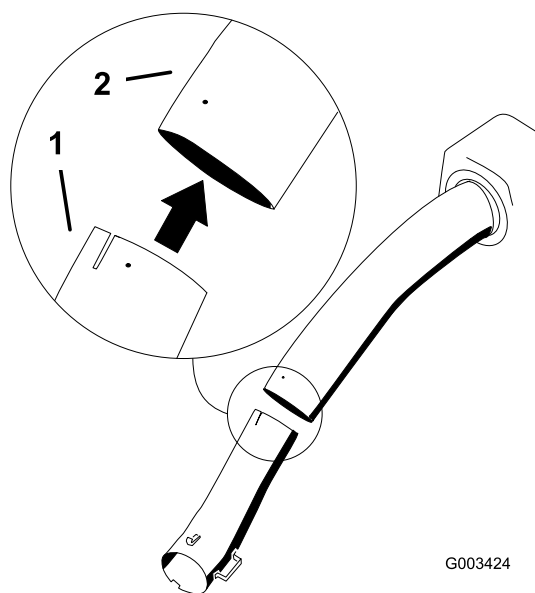
**Note:** The rubber seal must protrude out from the bagger hood.



**Figure 23**

- |                               |                                       |
|-------------------------------|---------------------------------------|
| 1. Upper tube                 | 3. Bagger hood                        |
| 2. Rubber seal protruding out | 4. Mark here against the rubber seal. |

7. Install the lower tube into the upper tube (Figure 24).



**Figure 24**

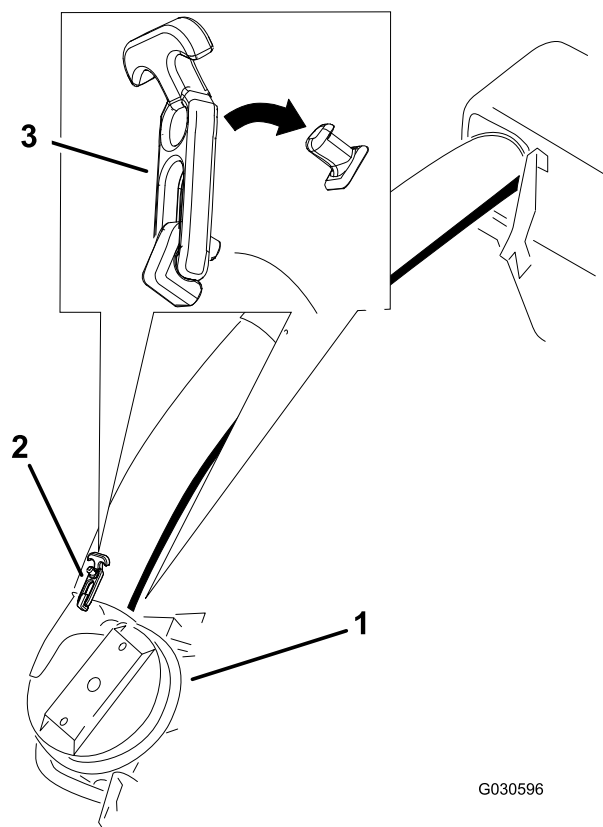
1. Lower tube                      2. Upper tube

8. Slide the lower tube onto the boot and latch them together (Figure 25 or Figure 26).

**Note:** There is a latch on the top and bottom of the blower housing.

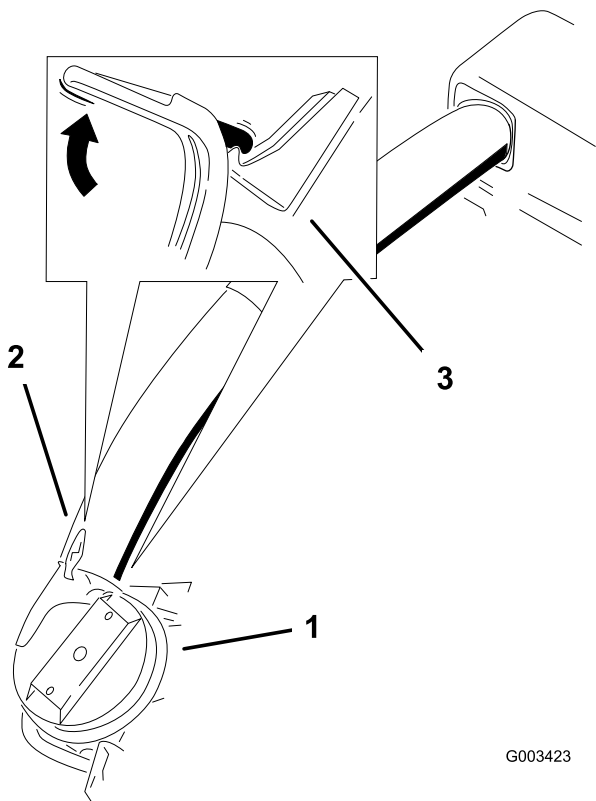
**Note:** Make sure that the mower deck is in the lowest height-of-cut position and the mark on the upper tube is still positioned against the protruding rubber seal.

Make sure that the mark from Figure 23 is still in place.



**Figure 25**

1. Blower assembly                      3. Latch  
2. Lower tube



G003423

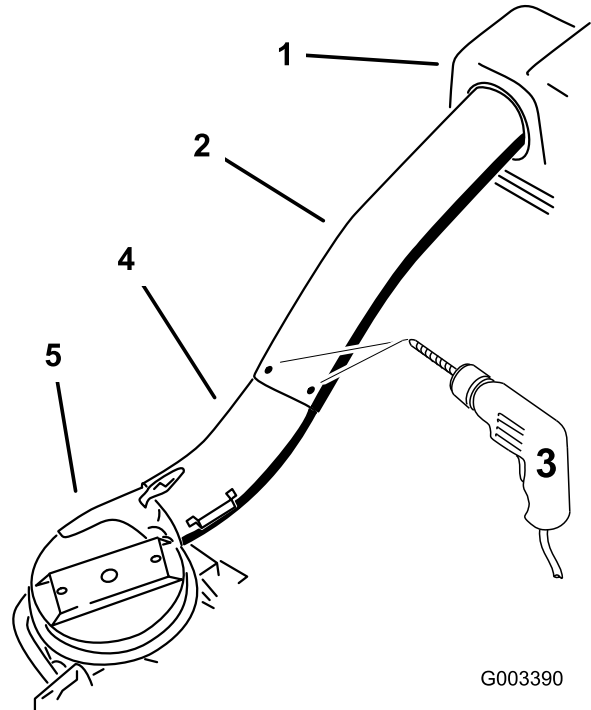
g003423

**Figure 26**

60- and 72-inch bagger shown

- |                    |          |
|--------------------|----------|
| 1. Blower assembly | 3. Latch |
| 2. Lower tube      |          |

9. Using the 3 holes or indentations in the upper tube as a template, drill 3 holes (7/32 inch diameter) where the upper and lower tubes join together (Figure 27).



G003390

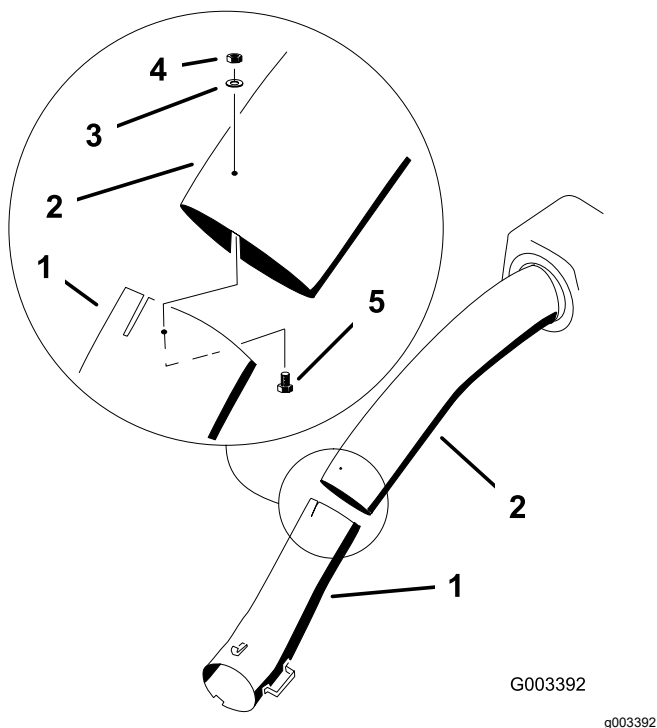
g003390

**Figure 27**

- |                                                                           |                    |
|---------------------------------------------------------------------------|--------------------|
| 1. Bagger hood                                                            | 4. Lower tube      |
| 2. Upper tube                                                             | 5. Blower assembly |
| 3. Drill 7/32 inch diameter holes here (use the upper tube as a template) |                    |

10. Remove the lower tube from the blower.

11. Join the upper and lower tubes with 3 bolts (#10 x 3/4 inches), 3 flat washers (7/32 inch), and 3 locknuts (#10) as shown in [Figure 28](#).



**Figure 28**

- |                            |                             |
|----------------------------|-----------------------------|
| 1. Lower tube              | 4. Locknut (#10)            |
| 2. Upper tube              | 5. Bolt, (#10 x 3/4 inches) |
| 3. Flat washer (7/32 inch) |                             |

12. Install the lower tube onto the blower housing and secure it with the latches.

# 11

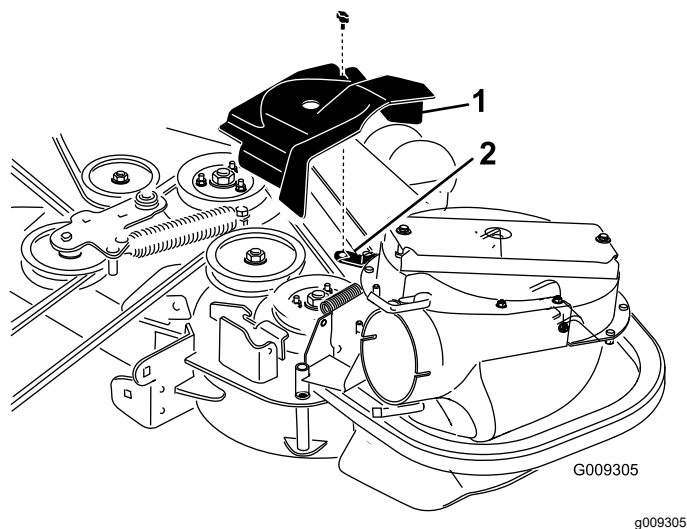
## Installing the Belt Cover

### Parts needed for this procedure:

1	Belt cover (from the Blower and Drive Kit)
---	--------------------------------------------

### Procedure

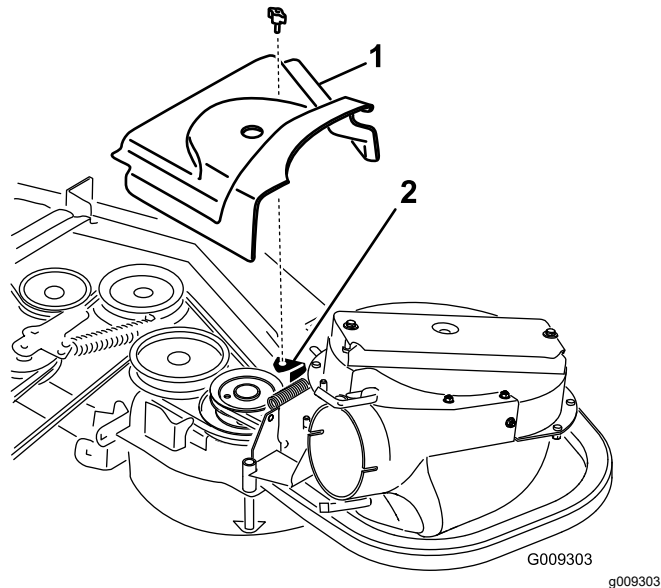
1. Lower the mower deck to the lowest height-of-cut position.
2. Install the new belt cover so that the notches on both sides go over the belt-cover supports and secure the latch ([Figure 29](#) or [Figure 30](#)).



**Figure 29**

48- and 52-inch bagger shown

- |                       |          |
|-----------------------|----------|
| 1. Belt cover         | 3. Notch |
| 2. Belt-cover support |          |



**Figure 30**

60- and 72-inch bagger shown

- |                       |          |
|-----------------------|----------|
| 1. Belt cover         | 3. Notch |
| 2. Belt-cover support |          |

# 12

## Installing the Weights

### Parts needed for this procedure:

2	Caster weight (if needed)
2	Clevis pin
2	Hairpin cotter
6	Lock washer (3/8 inch)
1	Weight-mount bracket
6	Bolt (3/8 x 1 inch)
6	Flat washer (3/8 inch)
3	Flange nut (small flange—3/8 inch)
2	Carriage bolt (5/16 x 3/4 inch)
2	Flange nut (5/16 inch)
3	Front weight (48-inch, 52-inch, and 60-inch decks)
1	Front weight [72-inch decks (serial number 406294344 and below)]
2	Front weight [72-inch decks (serial number 406294345 and above)]
2	Tap bolt (3/8 x 1-3/4 inches)
2	Nut (3/8 inch)

## Procedure

To comply with ANSI/OPEI B71.4-2004 Standard, you must add weights to the machine.

### ⚠ CAUTION

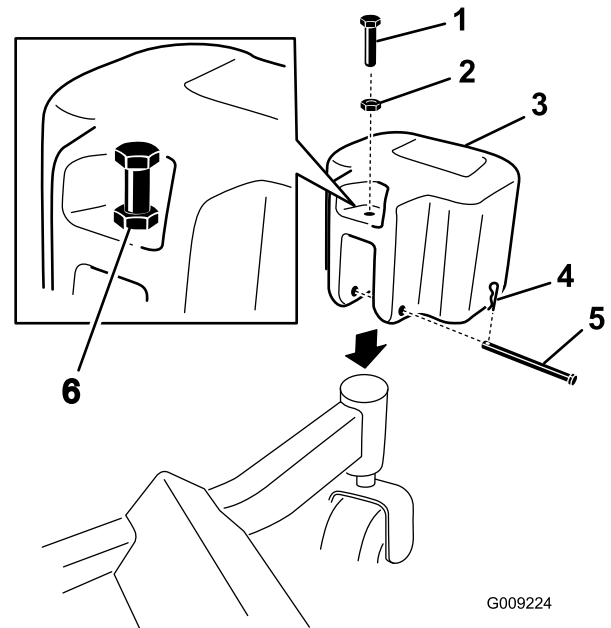
**The bagger adds a lot of weight to the rear of the machine and may cause an unstable condition, which could result in a loss of control.**

The following table shows what weights you use when you install a bagger.

	Front weights used	Caster weights used
48-inch mower deck with bagger	3	0
52-inch mower deck with bagger	3	0
60-inch mower deck with bagger	3	2

	Front weights used	Caster weights used
72-inch machine deck with bagger (serial number 406294344 and below)	1	2
72-inch machine deck with bagger (serial number 406294345 and above)	2	2

1. Install caster weights on the front casters with a clevis pin and hairpin cotter (**Figure 31**).
2. Install the nut (3/8 inch) onto each tap bolt (3/8 x 1-3/4 inches) and install the tap bolts into each weight (**Figure 31**).
3. Tighten the tap bolt so that it touches the frame and then tighten the jam nut against the weight.



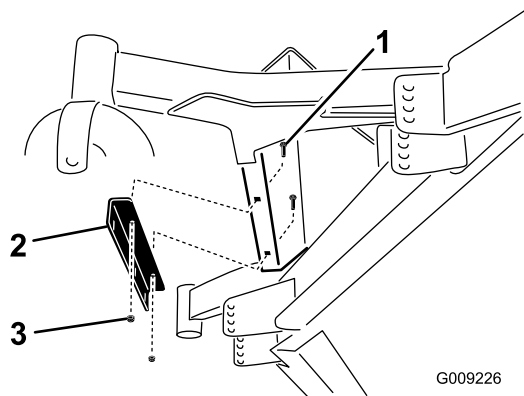
G009224

g009224

**Figure 31**

1. Tap bolt (3/8 x 1-3/4 inches)
2. Nut (3/8 inch)
3. Caster weight
4. Hairpin cotter
5. Clevis pin
6. Install the tap bolt against the frame and tighten the nut.

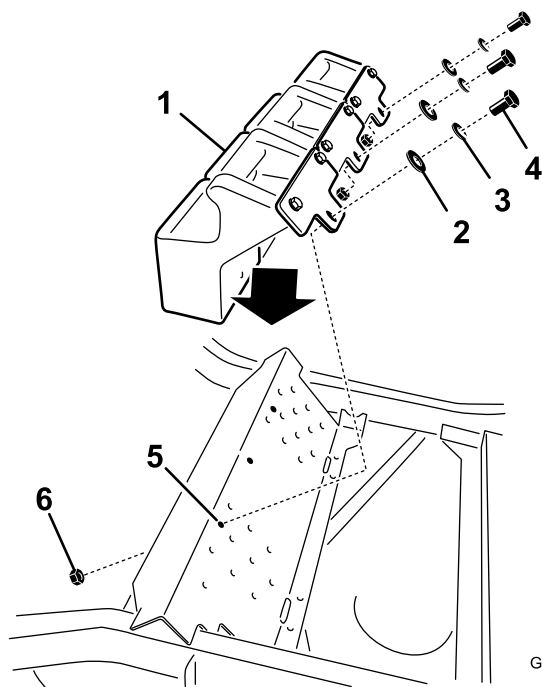
4. Install the weight-mount bracket under the footrest with 2 carriage bolts (5/16 x 3/4 inch) and 2 flange nuts (5/16 inch).



**Figure 32**

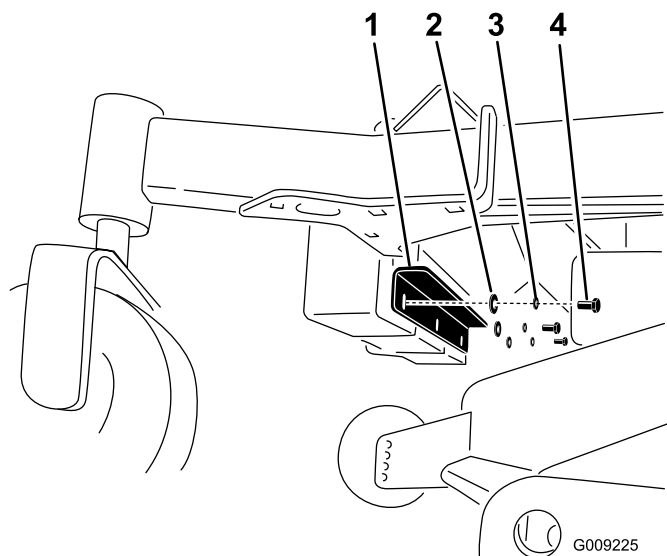
1. Carriage bolt (5/16 x 3/4 inch)
2. Weight-mount bracket
3. Flange nut (5/16 inch)

5. Install the front weights on top of the foot rest (Figure 33).



**Figure 33**

1. Front weight
2. Flat washer (3/8 inch)
3. Lock washer (3/8 inch)
4. Bolt (3/8 x 1 inch)
5. Hole in footrest
6. Flange nut (small flange-3/8 inch)



**Figure 34**

1. Weight-mount bracket
2. Flat washer (3/8 inch)
3. Lock washer (3/8 inch)
4. Bolt (3/8 x 1 inch)



# 13

## Installing the Bumpers

### Machines with MyRide™ Suspension System

Parts needed for this procedure:

2	Bumper
2	Spacer
2	Locknut (5/16 inch)

### Procedure

For 48-inch, 52-inch, 60-inch, and 72-inch decks (serial number 406294345 and above), install the bumpers to the 2 outside holes of the toeboard (Figure 35).

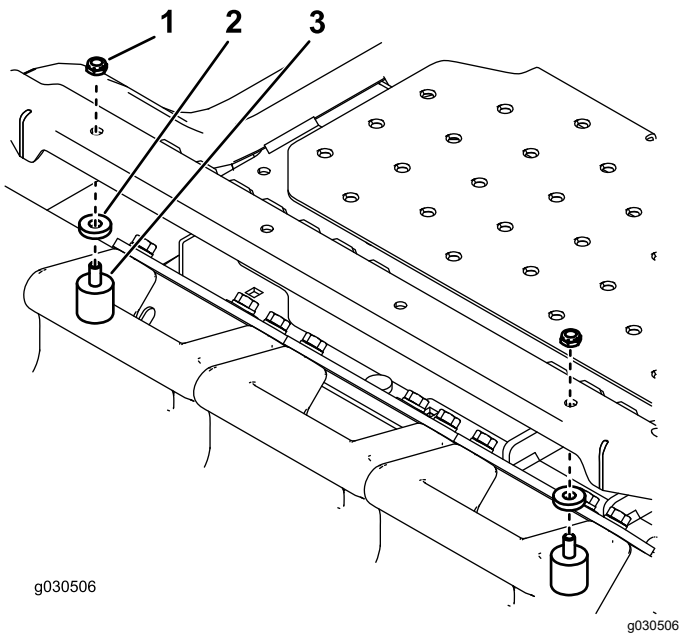


Figure 35

1. Locknut (5/16 inch)
2. Spacer
3. Bumper

For 72-inch decks (serial number 406294344 and below), install the bumpers to the 2 inside holes of the toeboard (Figure 36).

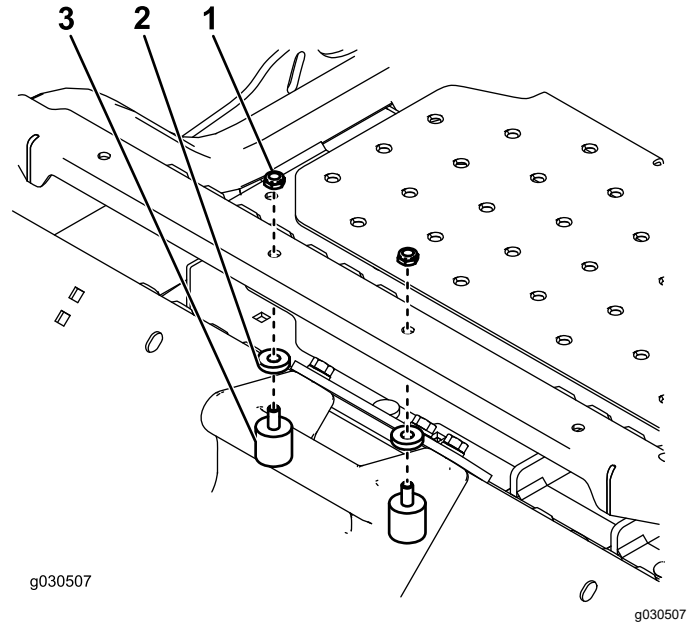


Figure 36

1. Locknut (5/16 inch)
2. Spacer
3. Bumper

# 14

## Adjusting the Parking Brake

No Parts Required

### Procedure

Make sure that the brake is adjusted properly; refer to the *Operator's Manual* for the machine.

# 15

## Checking the Tire Pressure

No Parts Required

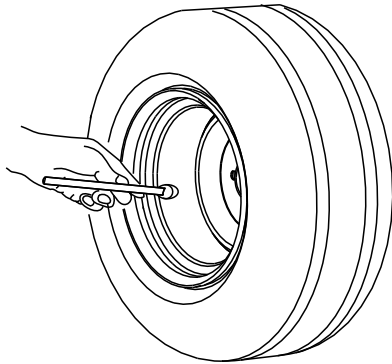
### Procedure

**Note:** Increase the tire pressure due to the additional weight.

Check and increase the air pressure in the front caster wheels and therear tires (Figure 37).

Pressure: Rear tires: 138 kPa (20 psi)

Front caster wheels: 172 kPa (25 psi)



G001055

g001055

Figure 37

## Operation

**Note:** Determine the left and right sides of the machine from the normal operating position.

**Important:** Set the parking brake when you leave the machine, even if just for a few minutes.

### ⚠ WARNING

To avoid personal injury, follow these procedures:

- Become familiar with all operating and safety instructions in the *Operator's Manual* for your machine before using this attachment.
- Never remove the bagger or bagger tubes while the engine is running.
- Always shut the engine off and wait for all moving parts to stop before clearing an obstruction from the bagging system.
- Never do maintenance or repairs while the engine is running.
- Set the parking brake.

## ⚠ WARNING

Without the grass deflector, bagger tubes or complete collection system mounted in place, you and others are exposed to blade contact and thrown debris. Contact with the rotating mower blade(s) and thrown debris will cause injury or death.

- Always install the grass deflector when you remove the collection system and change to side-discharge mode.
- If the grass deflector is ever damaged, replace it immediately. The grass deflector routes material down toward the turf.
- Never put your hands or feet under the mower.
- Never try to clear the discharge area or mower blades unless you move the power take off (PTO) to off and rotate the ignition key to off. Also remove the key and pull the wire off the spark plug(s).
- Turn off the engine before unclogging the discharge chute.
- Never use your hands to unclog the discharge chute, use a stick or similar object.

## ⚠ CAUTION

Children or bystanders may be injured if they move or attempt to operate the tractor while it is unattended.

Always remove the ignition key and set the parking brake when leaving the machine unattended, even if just for a few minutes.

## Adjusting the Baffle

Adjust the baffle to position B (middle position) for bagging. Refer to the *Operator's Manual* for the machine for the baffle adjustment procedure.

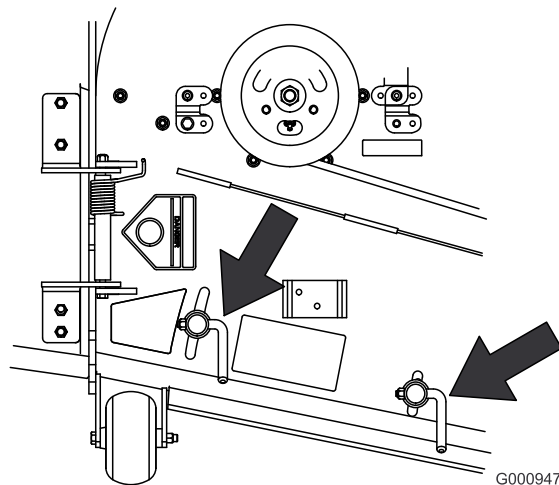


Figure 38

## Emptying the Bagger

1. Disengage the PTO and set the parking brake.
2. Lift the handle to open the door and empty the hopper.
3. Push the handle down to close the door ([Figure 39](#)).

**Note:** If you drive the machine onto a truck or trailer while the hopper is full, always back up the ramp. This will reduce the chance of rearward tip.

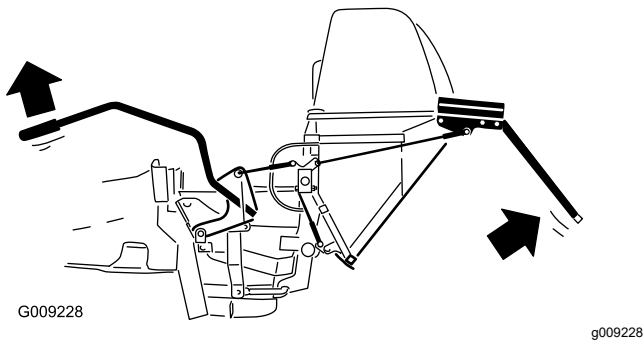


Figure 39

6. Use a stick or similar object, not your hands, to remove and clear the obstruction from the tube assembly.
7. If the blower assembly is plugged, unlatch the blower assembly, remove the belt, and swing it open.

**Important:** Use a stick or similar object, not your hands, to remove and clear the obstruction from the blower assembly.

8. After you remove the obstruction, install the complete collection system and resume operation.

## Removing the Bagger

### ⚠ WARNING

Components around engine will be hot if the machine has been running. Touching hot components can cause burns.

- Do not touch engine components when they are hot.
- Allow engine to cool before removing the bagger.

## Clearing Obstructions from the Collection System

### ⚠ WARNING

When you operate collection system, the blower rotates and can cut off or injure hands.

- Before adjusting, cleaning, repairing and inspecting the blower, and before unclogging the chute, turn off the engine and wait for all moving parts to stop. Remove the key.
  - Use a stick, not your hands, to remove an obstruction from the blower and tube.
  - Keep face, hands, feet, and any other part of your body or clothing away from concealed, moving, or rotating parts.
1. Disengage the PTO and set the parking brake.
  2. Turn off the engine, remove the key, and wait for all moving parts to stop before leaving the operating position.
  3. Empty the bagger.
  4. Unlatch the lower tube.
  5. Remove the tubes from the bagger.
  6. Lower the mower deck to the lowest height-of-cut position.
  7. Remove the blower belt from the mower-pulley assembly.
  8. Open the blower assembly.
  9. Remove the blower assembly from the pivot hole.
  10. If you are changing to side-discharge mode, ensure that the grass deflector is installed and can be lowered into working position.
  11. Remove the collection system assembly.

# Using the Grass Deflector

## **⚠ DANGER**

Without the grass deflector, discharge cover, or complete grass catcher assembly mounted in place, you and others are exposed to blade contact and thrown debris. Contact with rotating mower blade(s) and thrown debris will cause injury or death.

- Always install the grass deflector when removing the collection system and changing to side discharge mode.
- If the grass deflector is ever damaged, replace it immediately. The grass deflector routes material down toward the turf.
- Never put your hands or feet under the mower.
- Never try to clear the discharge area or mower blades unless you move the power take off (PTO) to the off position, rotate the ignition key to off and remove the key.

## Transporting Machines

### **⚠ DANGER**

Transporting the machine with grass or debris in the bagger can damage the machine.

Do not leave grass or debris in the bagger while transporting the machine on a trailer or truck.

## Operating Tips

### Machine Size

Remember that the machine is longer and wider with this attachment installed. If you turn too sharply in confined places, you may damage the attachment or other property.

### Trimming

Always trim with the left side of the mower. Do not trim with the right side of the mower because you could damage the bagging tubes.

### Cutting Height

For optimum bagging performance, set the deck height-of-cut to remove no more than 2 to 3 inches (51 to 76 mm) or 1/3 of the grass height, whichever

is less. Cutting off more than this will reduce the capacity of the vacuum system.

## Cutting Frequency

Cut the grass often, especially when it grows rapidly. You need to cut your grass twice if it gets excessively long (refer to Bagging Long Grass [Bagging Long Grass \(page 29\)](#)).

## Cutting Technique

For best lawn appearance, be sure to slightly overlap the mower into the previously cut area. This helps reduce the load on the engine and reduces the chance of plugging the blower assembly and tubes.

## Bagging Speed

The bagging system may plug if you drive too fast and the engine speed gets too slow. On hills, you may need to slow the ground speed of the machine. Mow downhill whenever possible.

### **⚠ CAUTION**

As the bagger fills, extra weight is added to the back of the machine. If you stop and start suddenly on hills, you may lose steering control or the machine may tip.

- Do not start or stop suddenly when going uphill or downhill. Avoid uphill starts.
- If you do stop the machine when going uphill, disengage the PTO. Then back down the hill using a slow speed.
- Do not change speeds or stop on slopes.

## Bagging Long Grass

If the grass grows longer than normal, or if it contains a high degree of moisture, raise the cutting height higher than usual and cut and bag the grass at this setting. Then cut and bag the grass again using the lower, normal setting.

Excessively long grass is heavy and may not be propelled completely into the bagger. If this happens, the tube and blower may plug. To avoid plugging the bagging system, mow the grass at a high height-of-cut, then lower the mower to your normal cutting height and repeat the bagging process.

## Bagging Wet Grass

If possible, always try to cut grass when it is dry. Wet grass can cause plugging.

## Reducing Plugging

To avoid plugging the bagging system, reduce the ground speed and mow the grass at a high height-of-cut, then lower the mower to your normal cutting height and repeat the bagging process.

## Signs of Plugging

As you use the bagger, a small amount of grass clippings normally blow out the front of the mower. An excessive amount of clipping blow-out indicates that the bagger is full or the tube is plugged.

## Bagging Blades

In most mowing conditions, the standard high lift blades provides the best bagging performance.

The Toro Atomic blade is recommended for bagging leaves in dry conditions. In dry, dusty conditions, the medium lift or low lift blades reduces dust and dirt blowout while providing effective bagging air flow.

Contact an Authorized Service Dealer for the proper blades for different mowing conditions.

## Curb Climbing and Loading

Always lift the deck to the highest position when loading the machine on trailers or ascending/descending a curb. Leaving the mower in a lower position while loading or going over a curb can cause damage to the mower. If a curb is higher than 152 mm (6 inches), cross it at a sharp angle with the deck fully raised. Use extreme caution when loading onto a trailer. Use a full-width ramp; the ramp should be long enough so that the angle does not exceed 15 degrees.

# Maintenance

## Recommended Maintenance Schedule(s)

Maintenance Service Interval	Maintenance Procedure
After the first 8 hours	<ul style="list-style-type: none"><li>• Inspect the blower belt.</li><li>• Inspect the collection system.</li></ul>
After the first 100 hours	<ul style="list-style-type: none"><li>• Adjust the parking brake (also when replacing or removing a brake component).</li></ul>
Before each use or daily	<ul style="list-style-type: none"><li>• Clean the hood screen.</li><li>• Clean the collection system.</li></ul>
Every 25 hours	<ul style="list-style-type: none"><li>• Inspect the blower belt.</li></ul>
Every 50 hours	<ul style="list-style-type: none"><li>• Grease the idler arm.</li></ul>
Every 100 hours	<ul style="list-style-type: none"><li>• Grease the handle pivot.</li><li>• Inspect the collection system.</li></ul>

## Cleaning the Bagger Screen

**Service Interval:** Before each use or daily

Clean the screen before each use (more often in wet grass).

1. Disengage the power take off (PTO) and set the parking brake.
2. Turn off the engine, remove the key, and wait for all moving parts to stop before leaving the operating position.
3. Open the bagger.
4. Clean the debris from the screen.
5. Close the bagger.

## Cleaning the Collection System

**Service Interval:** Before each use or daily

1. Wash the inside and outside of the bagger hood, tube, and the underside of the mower. Use a mild automotive detergent to remove dirt.
2. Make sure you remove matted grass from all parts.
3. After washing all parts, let them dry thoroughly.

**Note:** With all parts installed, start and run the machine for a minute to assist in drying.

# Inspecting the Blower Belt

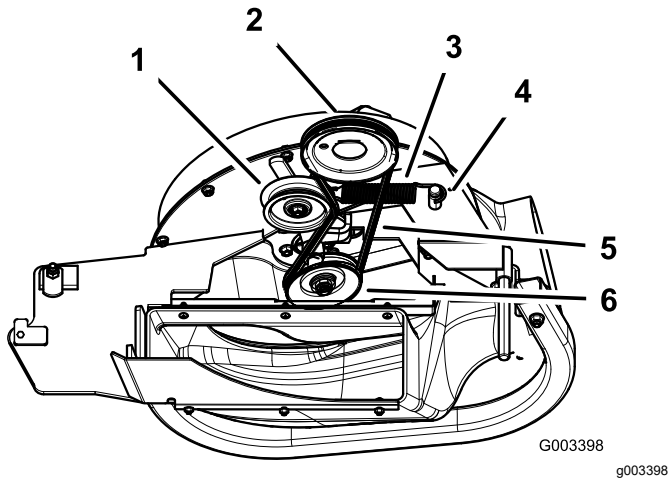
**Service Interval:** After the first 8 hours

Every 25 hours

Check the belts for cracks, frayed edges, burn marks, or any other damage. Replace damaged belts.

## Replacing the Blower Belt for 60- and 72-inch Mowers

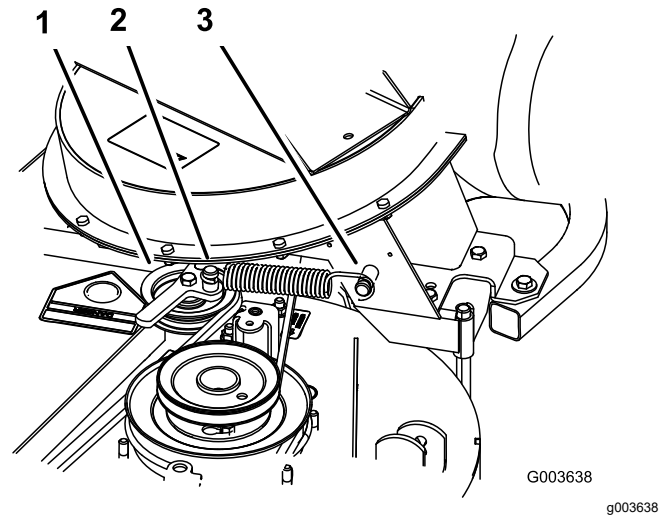
1. Disengage the PTO, move the motion-control levers to the NEUTRAL-LOCKED position, and set the parking brake.
2. Stop the engine, remove the key, and wait for all moving parts to stop before leaving the operating position.
3. Pull back on the spring-loaded idler pulley to relieve the belt tension ([Figure 40](#)).
4. Remove the existing bagger belt from the mower-deck pulley and then the blower pulleys.
5. Install the new belt around the blower pulleys and the mower-deck pulley ([Figure 40](#)).



**Figure 40**

- |                      |                  |
|----------------------|------------------|
| 1. Idler pulley      | 4. Spring peg    |
| 2. Mower-deck pulley | 5. Belt          |
| 3. Spring            | 6. Blower pulley |

6. Install the spring as shown in [Figure 41](#).



**Figure 41**

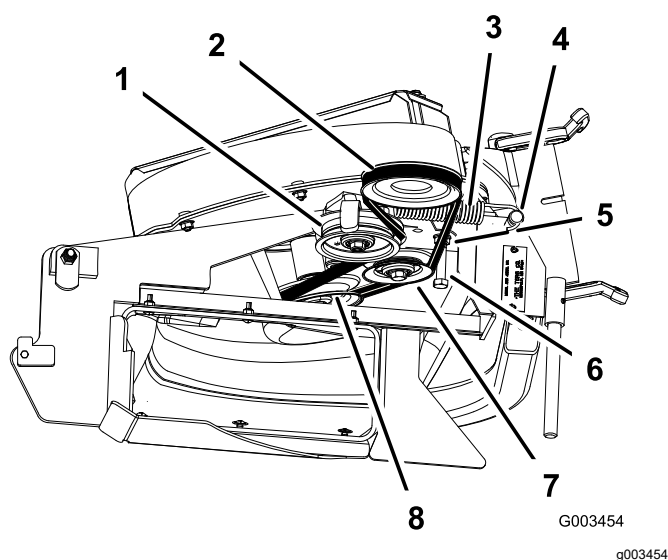
- |                               |                  |
|-------------------------------|------------------|
| 1. Spring-loaded idler pulley | 3. Long-hook end |
| 2. Short-hook end             |                  |

7. Pull back on the spring-loaded idler pulley and install the belt onto the spring-loaded idler pulley ([Figure 40](#)).

## Replacing the Blower Belt for 48- and 52-inch Mowers

1. Disengage the PTO, move the motion-control levers to the NEUTRAL-LOCKED position, and set the parking brake.
2. Stop the engine, remove the key, and wait for all moving parts to stop before leaving the operating position.
3. Loosen the belt guide bolt ([Figure 42](#)).
4. Remove the existing blower belt.
5. Install the new belt around the blower pulley ([Figure 42](#)).
6. Install the belt between the fixed-idler pulley and the belt-guide bolt.
7. Tighten the belt guide bolt ([Figure 42](#)).

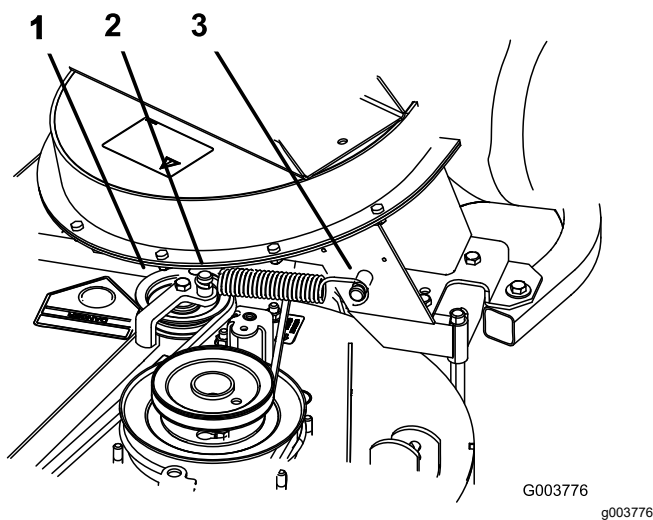




**Figure 42**

- |                      |                       |
|----------------------|-----------------------|
| 1. Idler pulley      | 5. Belt               |
| 2. Mower-deck pulley | 6. Belt-guide bolt    |
| 3. Spring            | 7. Fixed-idler pulley |
| 4. Spring peg        | 8. Blower pulley      |

8. Install the spring as shown in [Figure 43](#).



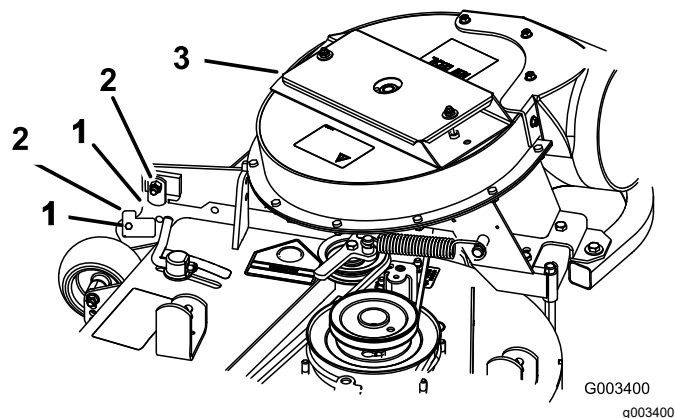
**Figure 43**

- |                               |                  |
|-------------------------------|------------------|
| 1. Spring-loaded idler pulley | 3. Long-hook end |
| 2. Short-hook end             |                  |

9. Install the belt onto the spring-loaded idler pulley ([Figure 42](#)).

## Checking and Adjusting the Blower Latch

Close the blower assembly to see if the latches are adjusted correctly. Loosen or tighten the bolts so the latches firmly hold the blower assembly against the mower deck but can be released by hand.



**Figure 44**

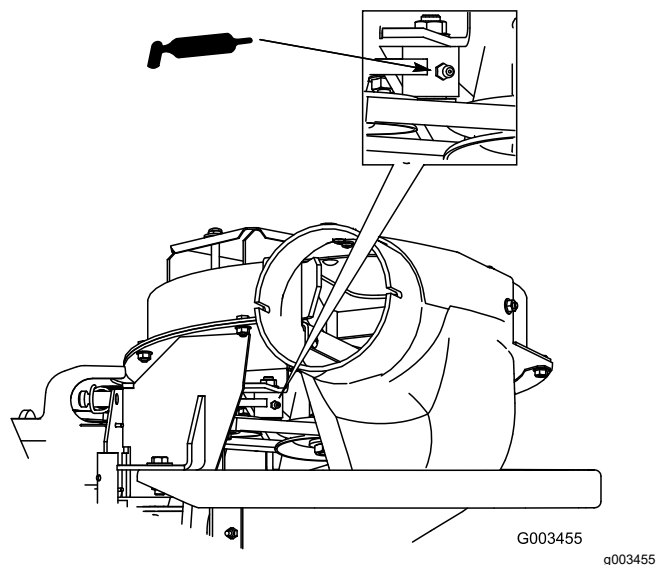
- |          |                    |
|----------|--------------------|
| 1. Latch | 3. Blower assembly |
| 2. Bolt  |                    |

## Greasing the Idler Arm and Handle Pivot

**Service Interval:** Every 50 hours—Grease the idler arm.

Every 100 hours—Grease the handle pivot.

Grease the blower belt idler arm ([Figure 45](#)).



**Figure 45**

For 60-and 72-inch mowers only, grease the handle pivot (Figure 46).

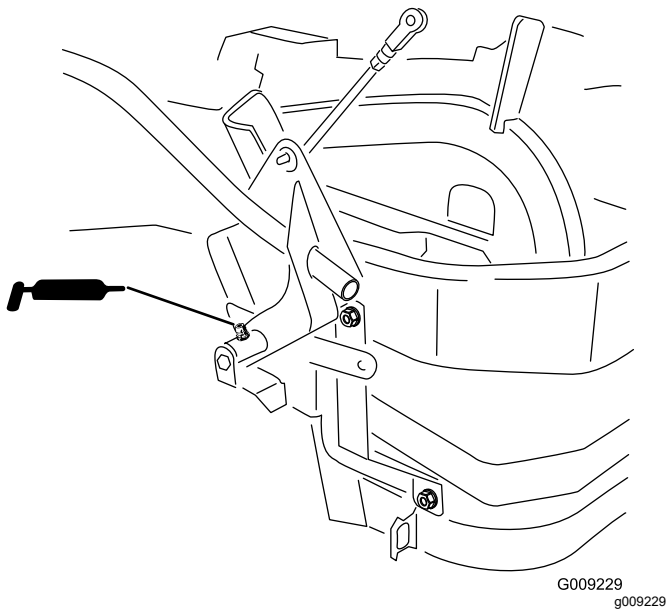


Figure 46

## Inspecting the Collection System

**Service Interval:** After the first 8 hours

Every 100 hours

1. Disengage the PTO, move the motion-control levers to the NEUTRAL-LOCKED position, and set the parking brake.
2. Stop the engine, remove the key, and wait for all moving parts to stop before leaving the operating position.
3. Check the upper tube, lower tube, bagger, and the blower assembly.

**Note:** Replace these parts if they are cracked or broken.

4. Check the bagger frame.

**Note:** Replace any parts that are cracked or broken.

5. Tighten all nuts bolts and screws.

## Adjusting the Closed Door for 60- and 72-inch Mowers

1. Disengage the PTO, move the motion-control levers to the NEUTRAL-LOCKED position, and set the parking brake.
2. Stop the engine, remove the key, and wait for all moving parts to stop before leaving the operating position.
3. With the door closed, loosen the nuts and adjust the stop bolts so that the contact arm is straight up and down (Figure 47).
4. Adjust the length of the hinge links to so that the door completely closes and reasonable force is on the handle (Figure 47).

**Note:** Lengthen the links to reduce the force. Shorten the links to increase the force

**Note:** Make sure that both the left and right sides are adjusted the same distance. With the door closed, the links should be slightly tight to minimize rattling.

5. Tighten the nuts.

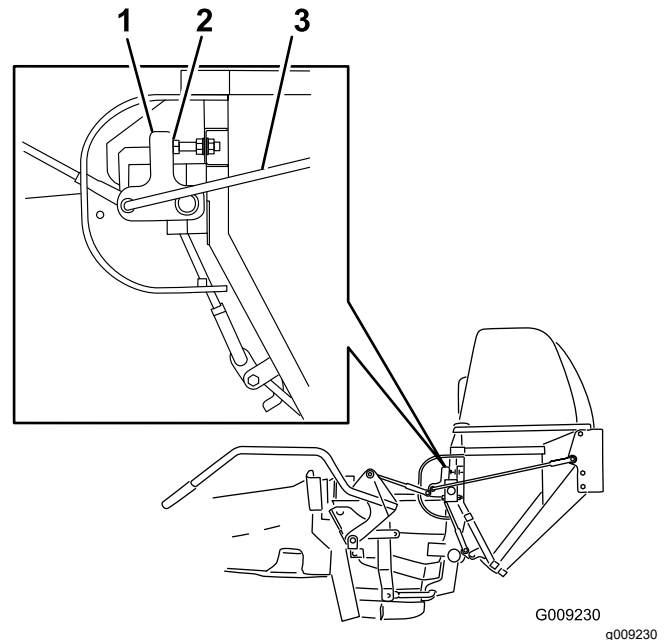


Figure 47

1. Contact arm—straight up and down
2. Stop bolt
3. Hinge links

# Adjusting the Open Door for 60- and 72-inch Mowers

**Note:** Perform this procedure after adjusting the door to completely close.

Adjust the handle link to so that the door opens as much as possible(Figure 48 and Figure 49).

**Note:** Lengthen the handle link to open the door farther. Shorten the handle link to open the door less

**Note:** How far the door opens is controlled by the contact arm hitting the stop. The stop is not adjustable and prevents the door from being opened too far.

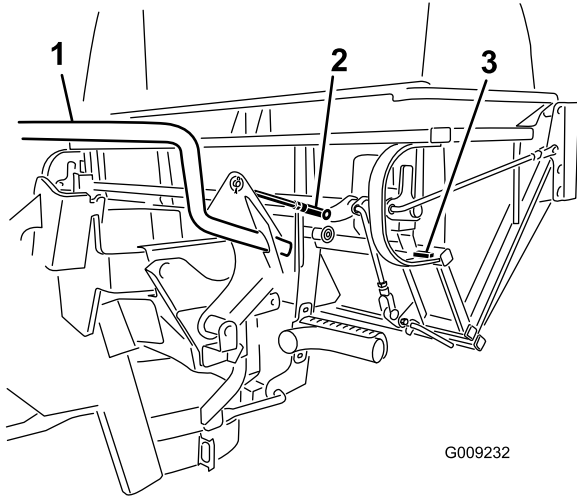


Figure 48

- 1. Handle
- 2. Handle link
- 3. Stop

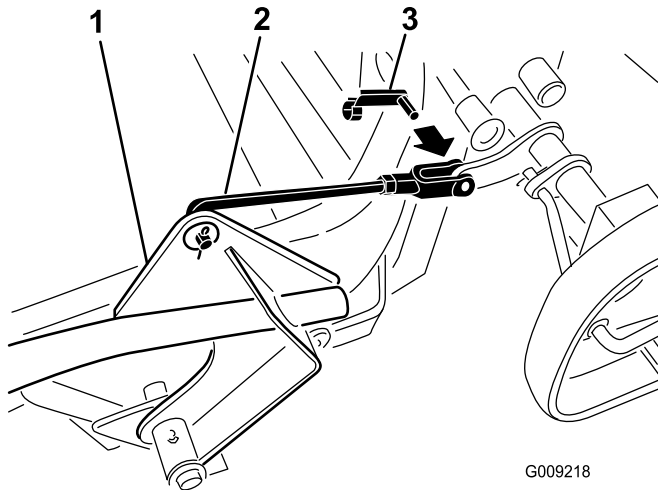


Figure 49

- 1. Handle assembly
- 2. Bagger-handle link
- 3. Clevis-pin spring

# Adjusting the Latches for 60- and 72-inch Mowers

**Note:** Adjust the open door and closed door positions before adjusting the latches.

1. Disengage the PTO, move the motion-control levers to the NEUTRAL-LOCKED position, and set the parking brake.
2. Stop the engine, remove the key, and wait for all moving parts to stop before leaving the operating position.
3. Close the door.
4. Ensure that the latches completely engage and contacts the latch rod welded to the door (Figure 50).

**Note:** The latches need to be tight against the latch rod. They need to be loose enough to move or wiggle.

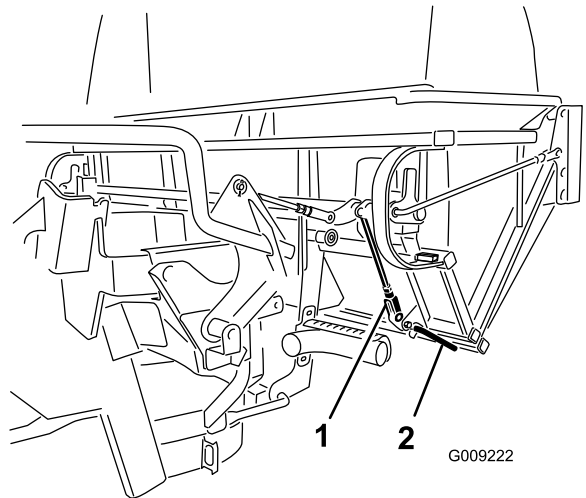


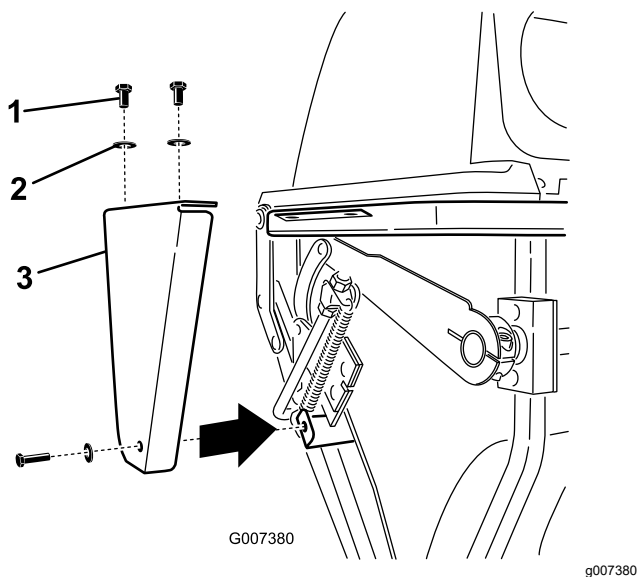
Figure 50

- 1. Latch link
- 2. Latch rod

# Adjusting the Arm Position for 48- and 52-inch Mowers

The left and right bellcrank arms need to be equally positioned from the upper frame tube for proper use.

1. Disengage the PTO, move the motion-control levers to the NEUTRAL-LOCKED position, and set the parking brake.
2. Stop the engine, remove the key, and wait for all moving parts to stop before leaving the operating position.
3. Remove the side plate from both sides of the bagger (Figure 51).



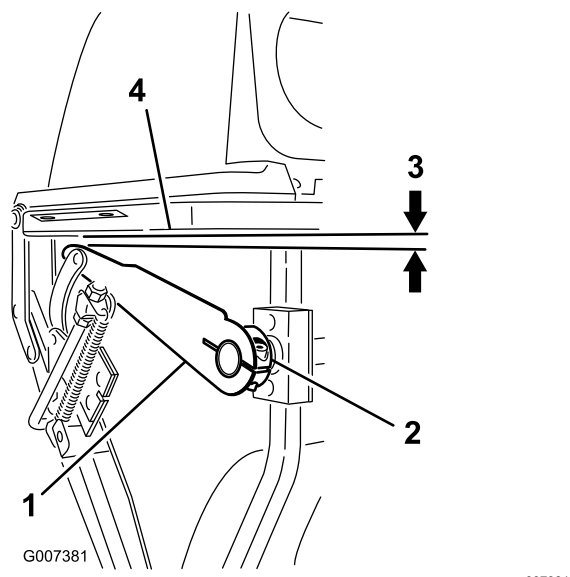
**Figure 51**

1. Bolt
2. Washer
3. Side plate

4. Check the distance between the left and right bellcranks and the upper frame tube.

**Note:** These dimensions need to be the same on both sides.

5. To make the distances equal, loosen the Allen-head bolt on the hub of the right bellcrank (Figure 52).
6. Position the bellcrank arms the same distance from the upper frame tube.
7. Tighten the Allen-head bolt and install the side plates.



**Figure 52**

1. Right bellcrank arm
2. Allen-head bolt
3. Distance from the bellcrank arm and upper frame tube is the same on both sides.
4. Upper frame tube

## Adjusting the Closed Door for 48- and 52-inch Mowers

1. Disengage the PTO, move the motion-control levers to the NEUTRAL-LOCKED position, and set the parking brake.
2. Stop the engine, remove the key, and wait for all moving parts to stop before leaving the operating position.
3. With the door closed, check and ensure that it is slightly tight against the frame when closed.
4. If adjustment is needed, adjust the nuts.

**Note:** Lengthen the links to reduce the force. Shorten the links to increase the force.

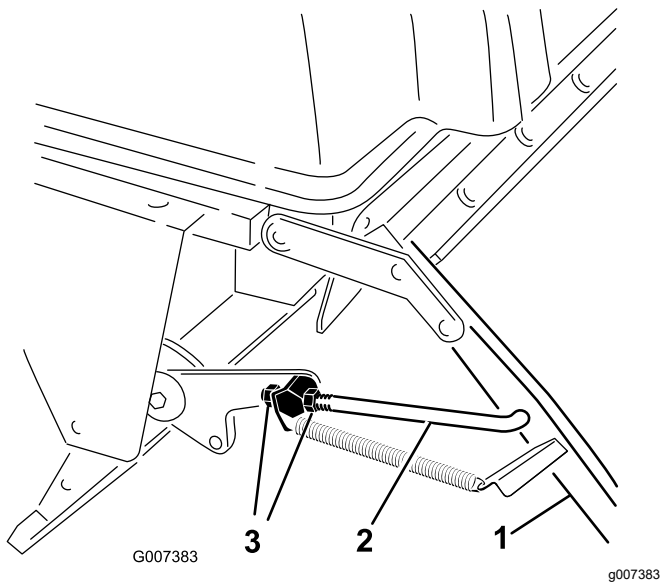
**Note:** Make sure that both the left and right sides are adjusted the same distance. With the door closed, the links should be slightly tight to minimize rattling.

5. Tighten the nuts.

# Adjusting the Open Door for 48- and 52-inch Mowers

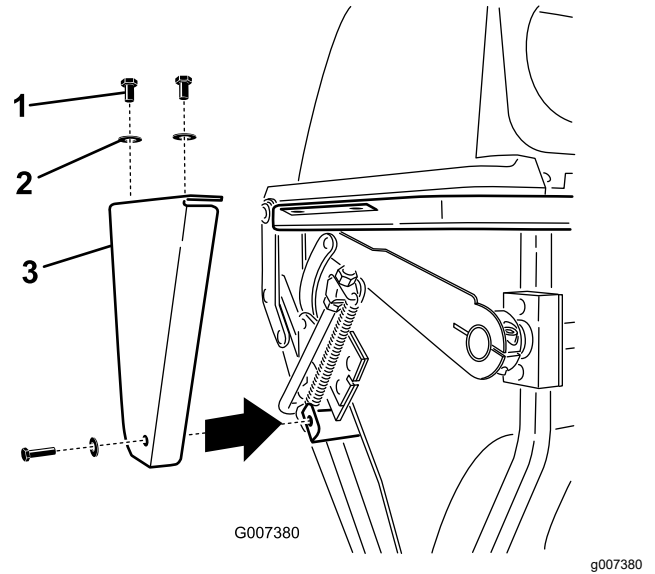
Perform this after adjusting the closed door.

1. Remove the side plate from both sides of the bagger (Figure 54).



**Figure 53**

1. Door
2. Hinge link
3. Nut



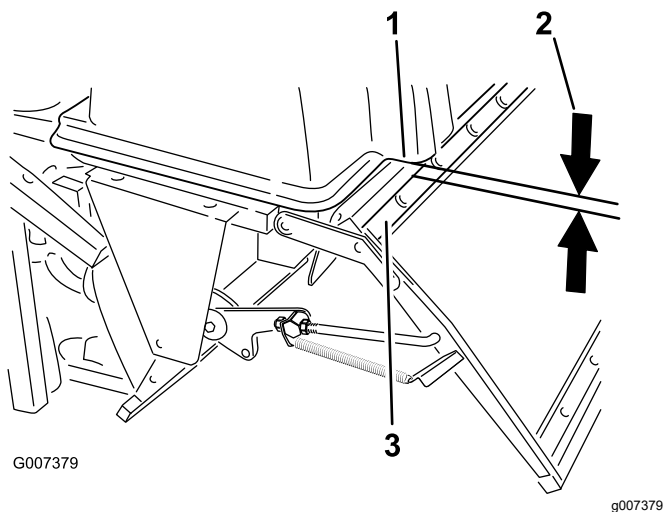
**Figure 54**

1. Bolt
2. Washer
3. Side plate

2. Open the door.

3. Check the distance between the upper tube of the door frame and the lower lip of the molded hood (Figure 55).

**Note:** The distance should be between 3.2 mm (1/8 inch) and 9.6 mm (3/8 inch).



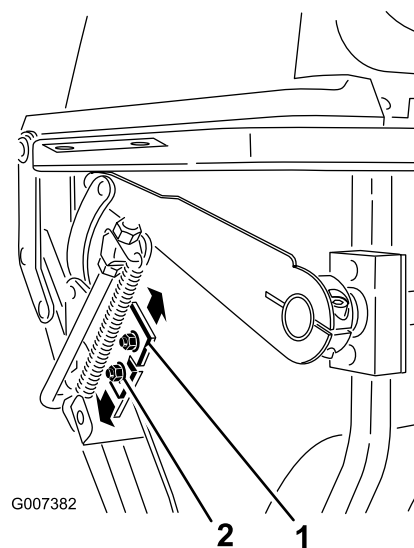
**Figure 55**

- |                                                                           |                                 |
|---------------------------------------------------------------------------|---------------------------------|
| 1. Lower lip of the molded hood                                           | 3. Upper tube of the door frame |
| 2. The measurement is between an 3.2 mm (1/8 inch) and 9.6 mm (3/8 inch). |                                 |

4. If adjustment is needed, adjust the hinge stops on both sides so that the distance between the upper tube of the door frame and the lower lip of the molded hood is between an 3.2 mm (1/8 inch) and 9.6 mm (3/8 inch).

**Note:** Make sure that both the left and right hinge stops are adjusted the same distance.

5. Tighten the nuts and install the side plates.



**Figure 56**

- |               |        |
|---------------|--------|
| 1. Hinge stop | 2. Nut |
|---------------|--------|

# Adjusting the Parking Brake

**Service Interval:** After the first 100 hours

Refer to the *Operator's Manual* for the machine to adjust the parking brake.

# Inspecting the Mower Blades

1. Inspect the mower blades regularly and whenever a blade strikes a foreign object.
2. If blades are badly worn or damaged, install new blades. Refer to your mower *Operator's Manual* for complete blade maintenance.

# Installing the Mower Blades

In most mowing conditions, the standard high-lift blades will provide the best bagging performance.

The Toro Atomic blade is recommended for bagging leaves in dry conditions. In dry dusty conditions, the medium-lift or low-lift blades reduces dust and dirt blowout while providing effective bagging air flow.

Contact an Authorized Service Dealer for the proper blades for different mowing conditions.

Refer to the mower *Operator's Manual* for more information on installing blades.

# Installing the Grass Deflector

## ⚠ WARNING

An uncovered discharge opening could allow the lawn mower to throw objects at you or others and result in serious injury. Also, contact with the blade could occur.

- Never operate the lawn mower unless you install a cover plate, a mulch plate, or a grass chute and catcher.
- Make sure that the grass deflector is in the down position.

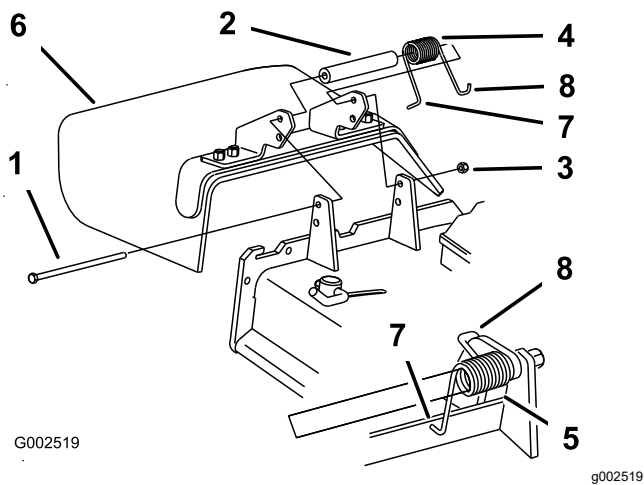
1. Remove the locknut, bolt, spring and spacer holding the deflector to the pivot brackets (Figure 57).
2. Remove the damaged or worn grass deflector.
3. Place the spacer and spring onto the grass deflector.

**Note:** Place the **L** end of the spring behind the deck edge.

**Note:** Make sure that the **L** end of the spring is installed behind the deck edge before installing the bolt as shown in Figure 57

4. Install the bolt and nut.
5. Place the **J**-hook end of the spring around the grass deflector (Figure 57).

**Important:** The grass deflector must be able to lower down into position. Lift the deflector up to test that it lowers into the full down position.



**Figure 57**

- |            |                                                                   |
|------------|-------------------------------------------------------------------|
| 1. Bolt    | 5. Spring installed                                               |
| 2. Spacer  | 6. Grass Deflector                                                |
| 3. Locknut | 7. L end of spring, place behind deck edge before installing bolt |
| 4. Spring  | 8. J-hook end of spring                                           |

## Storage

1. Clean the bagger. Refer to [Cleaning the Bagger Screen \(page 31\)](#) and [Cleaning the Collection System \(page 31\)](#).
2. Inspect the bagger for damage. Refer to [Inspecting the Collection System \(page 34\)](#).
3. Make sure that the bagger is empty and thoroughly dry.
4. Check the belt for wear or cracks.
5. Store the machine in a clean, dry place, out of direct sunlight. If you must store the machine outside, cover it with a weatherproof cover. This protects the plastic parts and extends the life of the machine.



# Troubleshooting

Problem	Possible Cause	Corrective Action
There is abnormal vibration.	<ol style="list-style-type: none"> <li>1. Cutting blade(s) is/are bent or unbalanced.</li> <li>2. A blade-mounting bolt is loose.</li> <li>3. A blower pulley or pulley assembly is loose.</li> <li>4. A blower belt is worn.</li> <li>5. Blower fan blade(s) is/are bent or unbalanced.</li> </ol>	<ol style="list-style-type: none"> <li>1. Install new cutting blade(s).</li> <li>2. Tighten the blade-mounting bolt.</li> <li>3. Tighten the appropriate pulley.</li> <li>4. Replace the blower belt.</li> <li>5. Contact an Authorized Service Dealer.</li> </ol>
Bagging performance is reduced.	<ol style="list-style-type: none"> <li>1. The engine speed is low.</li> <li>2. The screen in the bagger hood is plugged.</li> <li>3. A blower belt is loose.</li> <li>4. A tube or blower is plugged.</li> <li>5. The bagger is full.</li> </ol>	<ol style="list-style-type: none"> <li>1. Always operate the collection system at full throttle.</li> <li>2. Remove debris, leaves or grass clippings from the screen.</li> <li>3. Replace the blower belt.</li> <li>4. Locate and remove the plugged debris.</li> <li>5. Empty the bagger.</li> </ol>
Blower and tubes plug too frequently.	<ol style="list-style-type: none"> <li>1. The bagger is too full.</li> <li>2. The engine speed is low.</li> <li>3. Grass is too wet.</li> <li>4. Grass is too long.</li> <li>5. The screen in the bagger hood is plugged.</li> <li>6. The ground speed is too fast.</li> <li>7. A blower belt is worn.</li> </ol>	<ol style="list-style-type: none"> <li>1. Dump the bagger more frequently.</li> <li>2. Always operate the collection system at full throttle.</li> <li>3. Cut grass when it is dry.</li> <li>4. Cut no more than 51 to 76 mm (2 to 3 inches) or 1/3 of the grass height, whichever is less.</li> <li>5. Remove debris, leaves or grass clippings from the screen.</li> <li>6. Drive slower at full throttle.</li> <li>7. Replace the blower belt.</li> </ol>
Debris blow out.	<ol style="list-style-type: none"> <li>1. The bagger is too full.</li> <li>2. The ground speed is too fast.</li> <li>3. The mower deck is not level.</li> </ol>	<ol style="list-style-type: none"> <li>1. Dump the bagger more frequently.</li> <li>2. Drive slower at full throttle.</li> <li>3. See the <i>Operator's Manual</i> for the machine for leveling the mower deck.</li> </ol>
The blower impeller does not spin freely.	<ol style="list-style-type: none"> <li>1. The blower is plugged.</li> <li>2. The impeller not aligned.</li> </ol>	<ol style="list-style-type: none"> <li>1. Remove debris, leaves or grass clippings from the blower impeller.</li> <li>2. Contact an Authorized Service Dealer.</li> </ol>

**Notes:**

**Notes:**

# California Proposition 65 Warning Information

## What is this warning?

You may see a product for sale that has a warning label like the following:



**WARNING: Cancer and Reproductive Harm—**[www.p65Warnings.ca.gov](http://www.p65Warnings.ca.gov).

## What is Prop 65?

Prop 65 applies to any company operating in California, selling products in California, or manufacturing products that may be sold in or brought into California. It mandates that the Governor of California maintain and publish a list of chemicals known to cause cancer, birth defects, and/or other reproductive harm. The list, which is updated annually, includes hundreds of chemicals found in many everyday items. The purpose of Prop 65 is to inform the public about exposure to these chemicals.

Prop 65 does not ban the sale of products containing these chemicals but instead requires warnings on any product, product packaging, or literature with the product. Moreover, a Prop 65 warning does not mean that a product is in violation of any product safety standards or requirements. In fact, the California government has clarified that a Prop 65 warning "is not the same as a regulatory decision that a product is 'safe' or 'unsafe.'" Many of these chemicals have been used in everyday products for years without documented harm. For more information, go to <https://oag.ca.gov/prop65/faqs-view-all>.

A Prop 65 warning means that a company has either (1) evaluated the exposure and has concluded that it exceeds the "no significant risk level"; or (2) has chosen to provide a warning based on its understanding about the presence of a listed chemical without attempting to evaluate the exposure.

## Does this law apply everywhere?

Prop 65 warnings are required under California law only. These warnings are seen throughout California in a wide range of settings, including but not limited to restaurants, grocery stores, hotels, schools, and hospitals, and on a wide variety of products. Additionally, some online and mail order retailers provide Prop 65 warnings on their websites or in catalogs.

## How do the California warnings compare to federal limits?

Prop 65 standards are often more stringent than federal and international standards. There are various substances that require a Prop 65 warning at levels that are far lower than federal action limits. For example, the Prop 65 standard for warnings for lead is 0.5 µg/day, which is well below the federal and international standards.

## Why don't all similar products carry the warning?

- Products sold in California require Prop 65 labelling while similar products sold elsewhere do not.
- A company involved in a Prop 65 lawsuit reaching a settlement may be required to use Prop 65 warnings for its products, but other companies making similar products may have no such requirement.
- The enforcement of Prop 65 is inconsistent.
- Companies may elect not to provide warnings because they conclude that they are not required to do so under Prop 65; a lack of warnings for a product does not mean that the product is free of listed chemicals at similar levels.

## Why does Toro include this warning?

Toro has chosen to provide consumers with as much information as possible so that they can make informed decisions about the products they buy and use. Toro provides warnings in certain cases based on its knowledge of the presence of one or more listed chemicals without evaluating the level of exposure, as not all the listed chemicals provide exposure limit requirements. While the exposure from Toro products may be negligible or well within the "no significant risk" range, out of an abundance of caution, Toro has elected to provide the Prop 65 warnings. Moreover, if Toro does not provide these warnings, it could be sued by the State of California or by private parties seeking to enforce Prop 65 and subject to substantial penalties.