



Blower and Drive Kit

48in, 52in, 60in, or 72in E-Z Vac™ for Z Master® Mower

Model No. 78551—Serial No. 402500000 and Up

Model No. 78552—Serial No. 404691666 and Up

Model No. 78553—Serial No. 402784468 and Up

Model No. 78554—Serial No. 402433838 and Up

Installation Instructions

Important: Do not use drive or caster Tweels with this attachment. If the machine is equipped with drive or caster Tweels, replace them with factory pneumatic drive tires or factory pneumatic or semi-pneumatic caster tires.

Note: Determine the left and right sides of the machine from the normal operating position.

Loose Parts

Use the chart below to verify that all parts have been shipped.

Procedure	Description	Qty.	Use
1	No parts required	—	Prepare the machine.
2	No parts required	—	Remove the existing belt cover, belt, and bracket.
3	Pulley assembly Pulley-plate mount—for machines with an aluminum spindle only Flange nut (3/8 inch)—for machines with an aluminum spindle only	1 1 3	Install the pulley assembly and belt.
4	Belt cover bracket Carriage bolt (1/4 x 3/4 inches) Locknut (1/4 inch)	1 2 2	Install the new belt cover bracket for 48-inch and 52-inch mowers.
5	Belt cover bracket Carriage bolt (1/4 x 3/4 inches) Locknut (1/4 inch)	1 2 2	Install the new belt cover bracket for 60-inch and 72-inch mowers.
6	Blower assembly Bagger belt Blower belt cover Spring	1 1 1 1	Install the blower, bagger belt, spring, and belt cover.



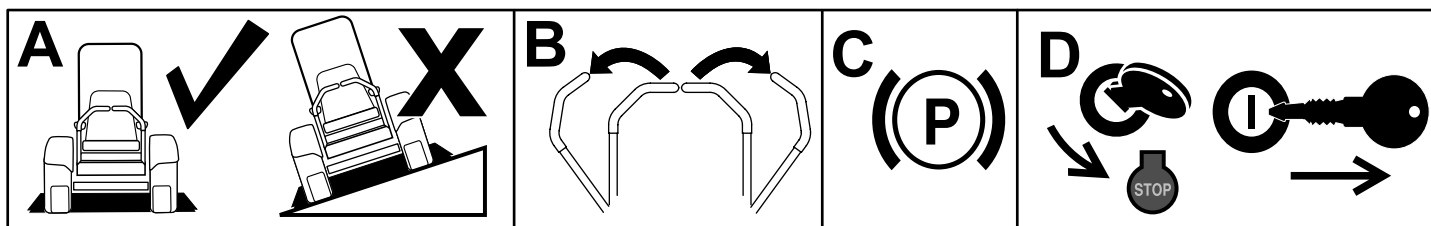
1

Preparing the Machine

No Parts Required

Procedure

1. Park the machine on a level surface.
2. Move the motion-control levers to the NEUTRAL-LOCK position.
3. Engage the parking brake.
4. Shut off the engine and remove the key.



g037289
g037289

Figure 1

2

Removing the Existing Belt Cover, Belt, and Bracket

No Parts Required

Procedure

Note: Clean the area around the belt cover before removing.

1. Lower the mower deck to the lowest height-of-cut position.
2. Remove the right belt cover (Figure 2).

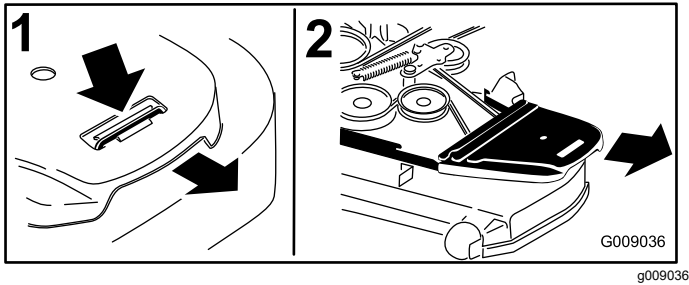


Figure 2

1. Push tab down.
2. Remove belt cover.

3. **For 48-inch and 52-inch mowers only:** Loosen the bolts holding the right spindle to the mower deck (Figure 3).

Note: This will allow access to the nuts holding the right belt cover bracket to the mower deck.

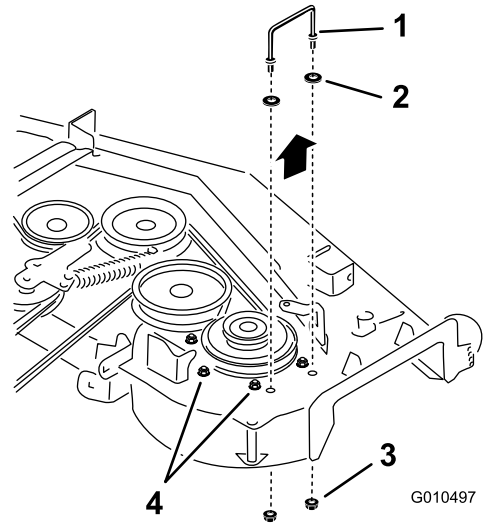


Figure 3

48-inch and 52-inch mower deck shown

1. Right belt cover bracket
2. Washer
3. Flange nut
4. Loosen these bolts.

4. Remove the existing right belt cover bracket (Figure 3 and Figure 4).

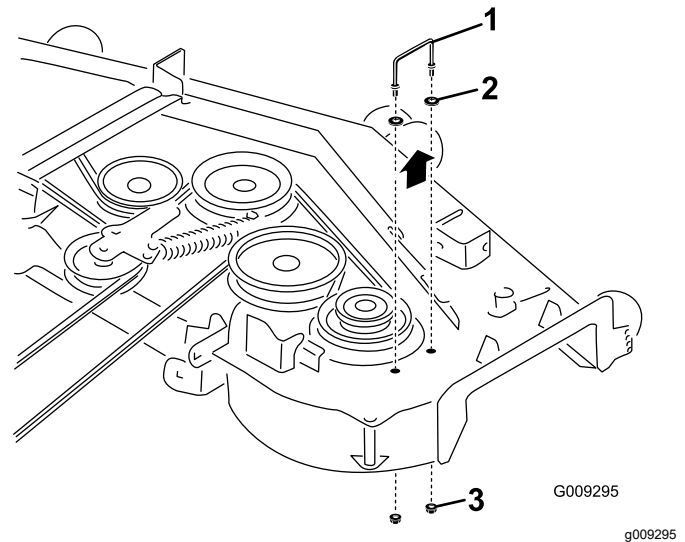


Figure 4

60-inch and 72-inch mower deck shown

1. Right belt cover bracket
2. Washer
3. Flange nut

5. Store the right belt cover, bracket, and hardware for later use if you remove the bagger blower and pulley.
6. Remove and retain the deck belt.

3

Installing the Pulley Assembly and Belt

Parts needed for this procedure:

1	Pulley assembly
1	Pulley-plate mount—for machines with an aluminum spindle only
3	Flange nut (3/8 inch)—for machines with an aluminum spindle only

For Machines with an Aluminum Spindle

1. Remove the top nut, washer, and sheave from the spindle (Figure 5).

Note: Note the orientation of the sheave when you remove it from the spindle to ensure that you install it properly later in the process.

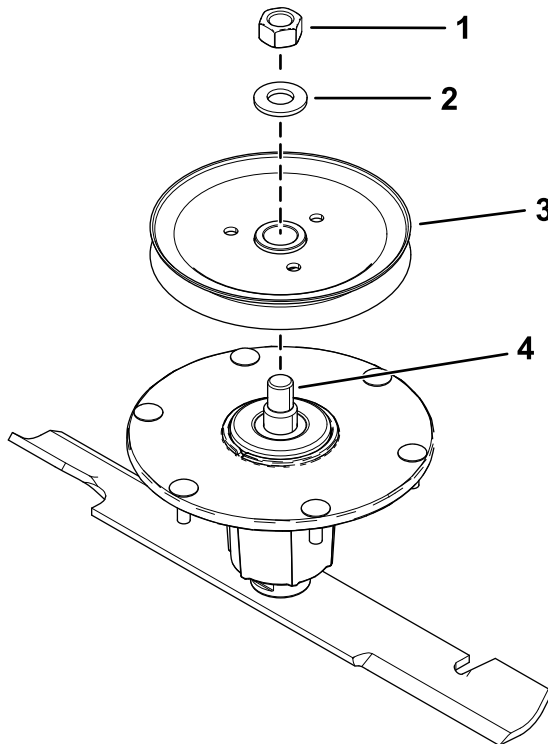


Figure 5

1. Top nut
2. Washer
3. Sheave
4. Spindle

2. Insert the pulley-plate mount studs into the holes in the sheave (Figure 6).

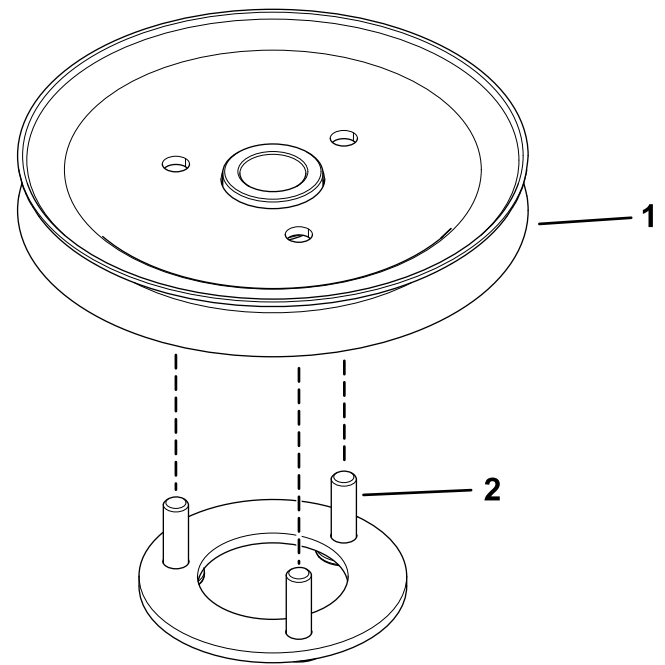


Figure 6

1. Sheave
2. Pulley-plate mount studs

g302390

g302393

3. Install the sheave assembly to the spindle using the washer and top nut (Figure 7).

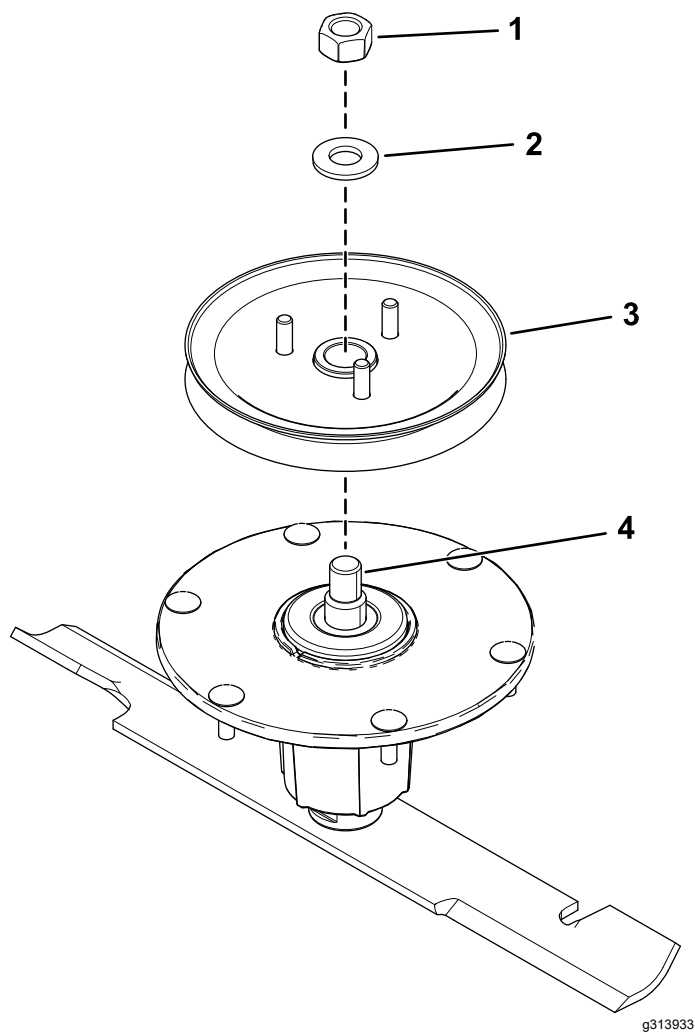


Figure 7

- | | |
|------------|--------------------|
| 1. Top nut | 3. Sheave assembly |
| 2. Washer | 4. Spindle |

4. Torque the top nut to 176 to 217 N·m (130 to 160 ft-lb).

Note: Ensure that the sheave spins freely.

5. Align the new pulley assembly so that the openings fit over the studs (Figure 8).
6. Turn the pulley to lock it into position (Figure 8).
7. After the new pulley assembly is in position, install the nuts to secure the new pulley assembly (Figure 8).

Torque the 3 nuts to 28 to 34 N·m (21 to 25 ft-lb).

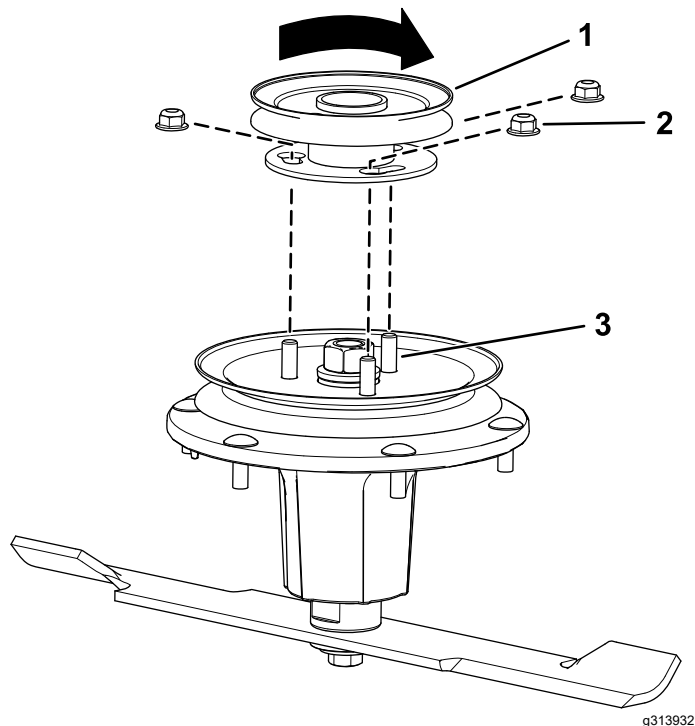


Figure 8

- | | |
|--------------------|---------|
| 1. Pulley assembly | 3. Stud |
| 2. Nut | |

8. Install the deck belt.

For Machines with Bolts

1. Loosen, but do not remove, the tapping bolts on the existing mower-deck pulley (Figure 9).
2. Align the new pulley assembly so that the openings fit over the pulley bolt heads (Figure 9).
3. Turn the pulley to lock it into position (Figure 9).

Note: If the pulley does not turn, loosen the bolts more to raise the bolt heads and allow the pulley to lock into position.

4. After the new pulley assembly is in position, tighten the existing bolts to secure new pulley assembly.

Note: Torque the bolts to 28 to 34 N·m (21 to 25 ft-lb).

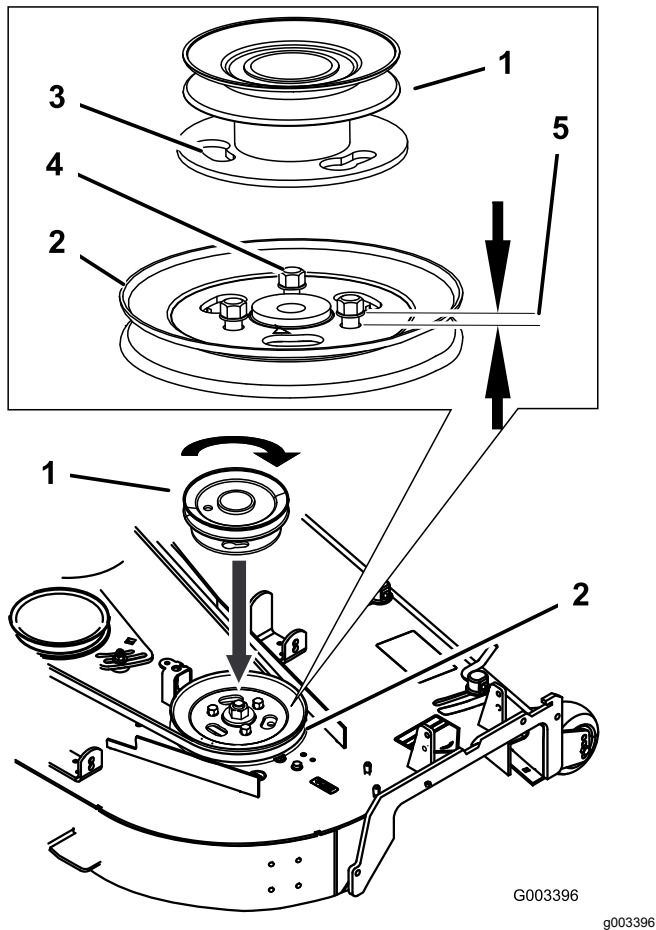


Figure 9

- | | | |
|----------------------|------------------|-------------------------------|
| 1. Pulley assembly | 3. Locking slots | 5. Clearance—5 mm (3/16 inch) |
| 2. Mower-deck pulley | 4. Bolt heads | |

For Machines without Bolts

1. Remove the nuts on the existing mower-deck pulley (Figure 10).
2. Install the new pulley assembly onto the mower-deck pulley bolts (Figure 10).
3. Turn the pulley to lock it into position (Figure 10).
4. After the new pulley assembly is in position, install the nuts to secure new pulley assembly.

Note: Torque the nuts to 28 to 34 N·m (21 to 25 ft-lb).

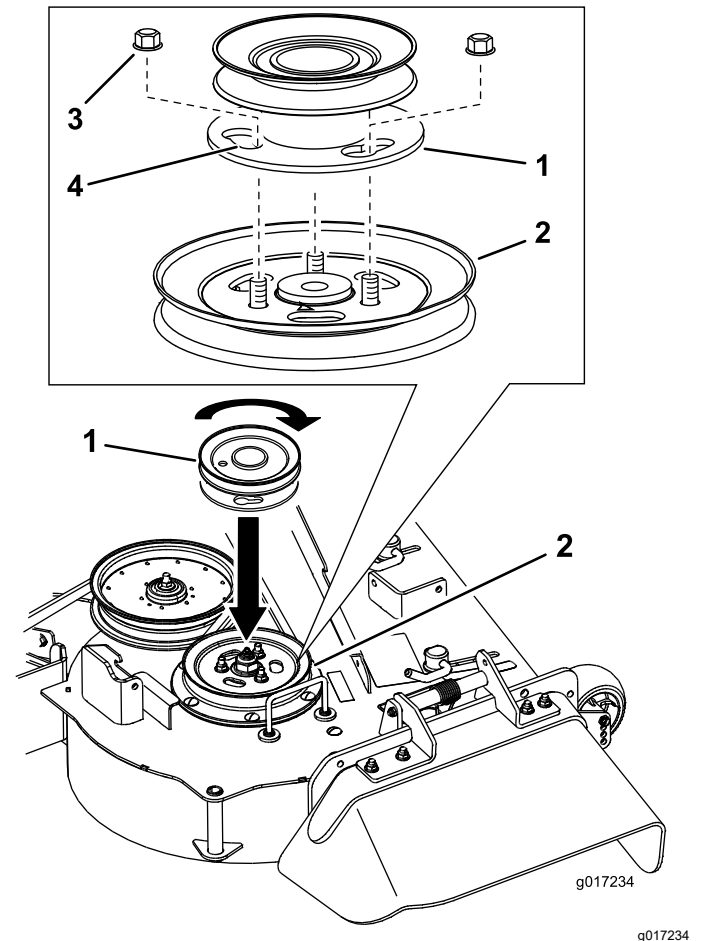


Figure 10

- | | | | |
|--------------------|----------------------|------------------|---------|
| 1. Pulley assembly | 2. Mower-deck pulley | 3. Locking slots | 4. Nuts |
|--------------------|----------------------|------------------|---------|

5. Install the deck belt.

4

Installing the New Belt Cover Bracket

48-inch and 52-inch Mowers

Parts needed for this procedure:

1	Belt cover bracket
2	Carriage bolt (1/4 x 3/4 inches)
2	Locknut (1/4 inch)

Procedure

Install the belt cover bracket with 2 carriage bolts (1/4 x 3/4 inches) and 2 locknuts (1/4 inch) as shown in [Figure 11](#).

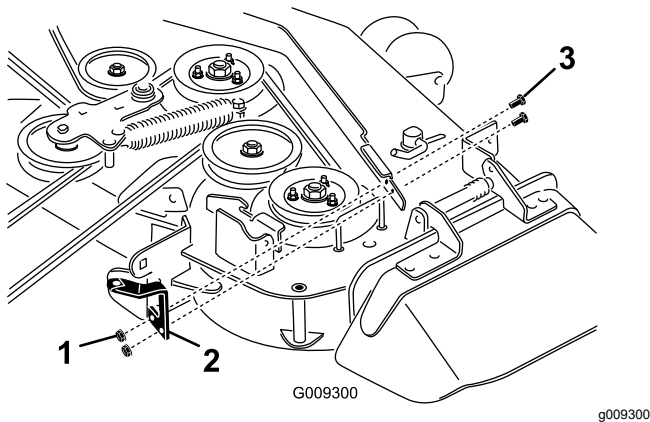


Figure 11

1. Locknut (1/4 inch)
2. Bracket for 48-inch and 52-inch mower decks
3. Carriage bolt (1/4 x 3/4 inches)

5

Installing the New Belt Cover Bracket

60-inch and 72-inch Mowers

Parts needed for this procedure:

1	Belt cover bracket
2	Carriage bolt (1/4 x 3/4 inches)
2	Locknut (1/4 inch)

Procedure

Install the belt cover bracket with 2 carriage bolts (1/4 x 3/4 inches) and 2 locknuts (1/4 inch) as shown in [Figure 12](#).

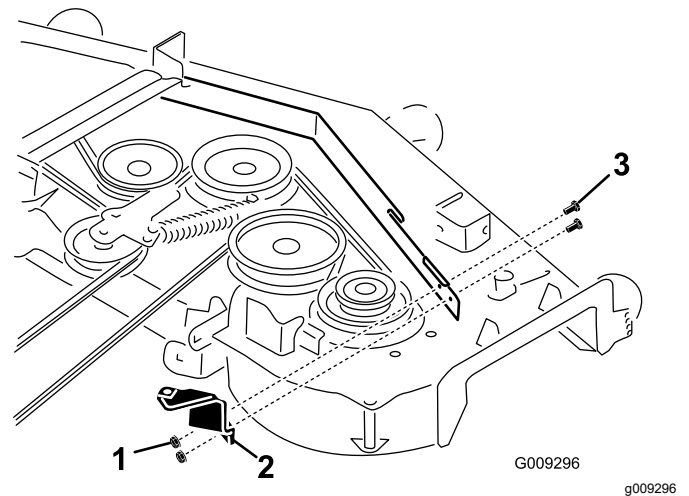


Figure 12

1. Locknut (1/4 inch)
2. Bracket for 60-inch and 72-inch mower decks
3. Carriage bolt (1/4 x 3/4 inches)

6

Installing the Blower Assembly, Bagger Belt, Spring and Blower-Belt Cover

Parts needed for this procedure:

1	Blower assembly
1	Bagger belt
1	Blower belt cover
1	Spring

Procedure

Refer to the bagger *Operator's Manual* for the correct procedure to install the blower, bagger belt, spring, and blower-belt cover.