



Blower and Drive Kit

48in, 52in, 60in, or 72in E-Z Vac™ for Z Master® Mower

Model No. 78551—Serial No. 407000000 and Up

Model No. 78552—Serial No. 412090000 and Up

Model No. 78553—Serial No. 412200000 and Up

Model No. 78554—Serial No. 410000000 and Up

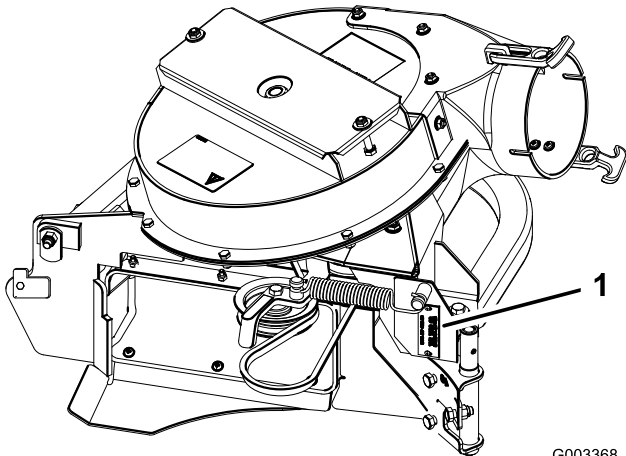
Installation Instructions

Introduction

Read this information carefully to learn how to operate and maintain your product properly and to avoid injury and product damage. You are responsible for operating the product properly and safely.

Visit www.Toro.com for product safety and operation training materials, accessory information, help finding a dealer, or to register your product.

Whenever you need service, genuine Toro parts, or additional information, contact an Authorized Service Dealer or Toro Customer Service and have the model and serial numbers of your product ready. **Figure 1** identifies the location of the model and serial numbers on the product. Write the numbers in the space provided.



G003368
g003368

Figure 1

1. Blower model and serial number location

Model No. _____
Serial No. _____

This manual identifies potential hazards and has safety messages identified by the safety alert symbol

(**Figure 2**), which signals a hazard that may cause serious injury or death if you do not follow the recommended precautions.



Figure 2

g000502

1. Safety alert symbol

This manual uses 2 words to highlight information. **Important** calls attention to special mechanical information and **Note** emphasizes general information worthy of special attention.

⚠ WARNING

CALIFORNIA Proposition 65 Warning

Use of this product may cause exposure to chemicals known to the State of California to cause cancer, birth defects, or other reproductive harm.

Contents

Introduction	1
Safety	2
Safety and Instructional Decals	2
Setup	3
1 Preparing the Machine	4
2 Removing the Existing Belt Cover, Belt, and Bracket.....	5
3 Installing the Pulley Assembly and Belt.....	6
4 Installing the New Belt Cover Bracket.....	9
5 Installing the New Belt Cover Bracket.....	9
6 Installing the Blower Assembly, Bagger Belt, Spring and Blower-Belt Cover	9



Safety

Safety and Instructional Decals



Safety decals and instructions are easily visible to the operator and are located near any area of potential danger. Replace any decal that is damaged or lost.

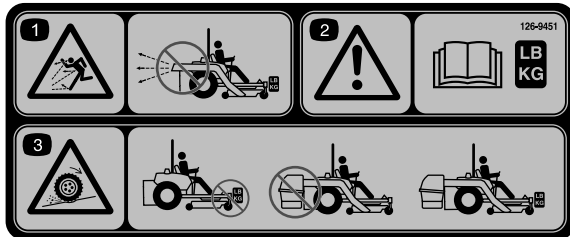


126-4659

126-4659

decal126-4659

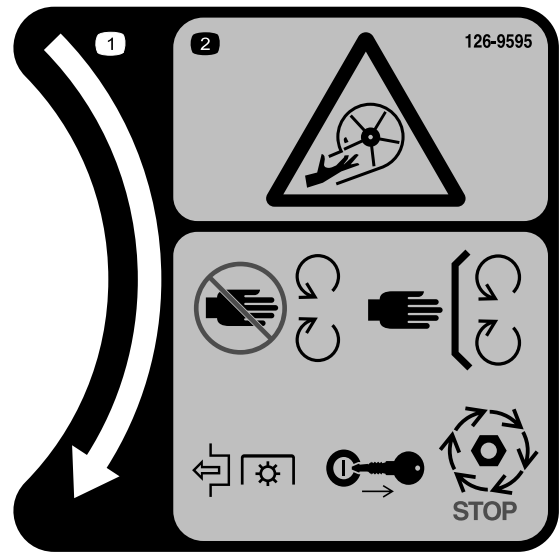
1. Warning—hot pulley; allow to cool.



decal126-9451

126-9451

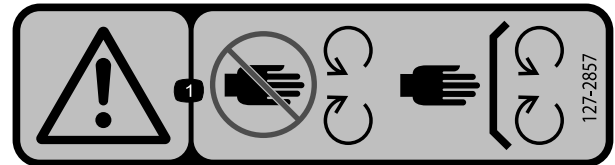
1. Thrown object hazard—do not run the blower without the entire collection system installed and latched.
2. Warning—read the *Operator's Manual* about counterbalance weight installation.
3. Loss of traction and steering or reduced stability hazard—bagger counterbalance weight(s) installed without the bagger may cause loss of traction and steering control; the bagger installed without the bagger counterbalance weight(s) can cause reduced stability; install weight(s) only when the bagger is installed.



decal126-9595

126-9595

1. Rotation indicator
2. Impeller/Rotating Blades hazard—Keep hands away from moving parts. Keep all safety devices in place and working. Do not reach into the blower unless the rotation indicator has stopped. Disengage the PTO, shut off the engine, remove the key, and wait for all moving parts to stop.



decal127-2857

127-2857

1. Warning—keep away from moving parts; keep all guards and safeties in place.

WARNING: Cancer and Reproductive Harm - www.P65Warnings.ca.gov.
For more information, please visit www.ttcocaprop65.com

decal133-8061

133-8061

Installation

Loose Parts

Use the chart below to verify that all parts have been shipped.

Procedure	Description	Qty.	Use
1	No parts required	–	Prepare the machine.
2	No parts required	–	Remove the existing belt cover, belt, and bracket.
3	Pulley assembly	1	Install the pulley assembly and belt.
	Pulley-plate mount—for machines with an aluminum spindle only	1	
	Flange nut (3/8 inch)—for machines with an aluminum spindle only	3	
4	Belt cover bracket	1	Install the new belt cover bracket for 48-inch and 52-inch mowers.
	Carriage bolt (1/4 x 3/4 inches)	2	
	Locknut (1/4 inch)	2	
5	Belt cover bracket	1	Install the new belt cover bracket for 60-inch and 72-inch mowers.
	Carriage bolt (1/4 x 3/4 inches)	2	
	Locknut (1/4 inch)	2	
6	Blower assembly	1	Install the blower, bagger belt, spring, and belt cover.
	Bagger belt	1	
	Blower belt cover	1	
	Spring	1	

Important: Do not use drive or caster Tweels with this attachment. If the machine is equipped with drive or caster Tweels, replace them with factory pneumatic drive tires or factory pneumatic or semi-pneumatic caster tires.

Note: Determine the left and right sides of the machine from the normal operating position.

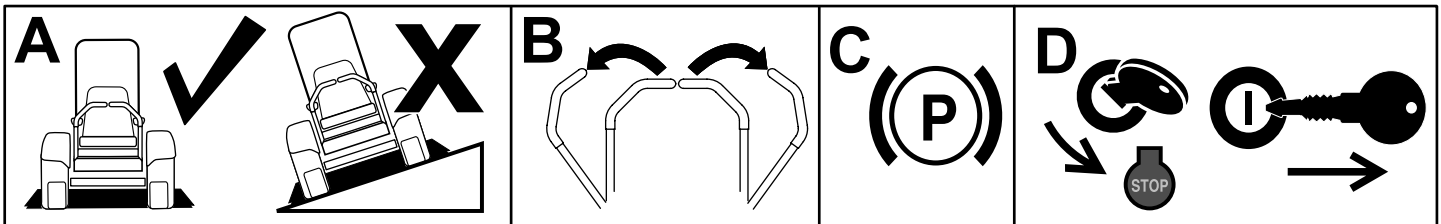
1

Preparing the Machine

No Parts Required

Procedure

1. Park the machine on a level surface.
2. Move the motion-control levers to the NEUTRAL-LOCK position.
3. Engage the parking brake.
4. Shut off the engine and remove the key.



g037289
g037289

Figure 3

2

Removing the Existing Belt Cover, Belt, and Bracket

No Parts Required

Procedure

Note: Clean the area around the belt cover before removing.

1. Lower the mower deck to the lowest height-of-cut position.
2. Remove the right belt cover (Figure 4).

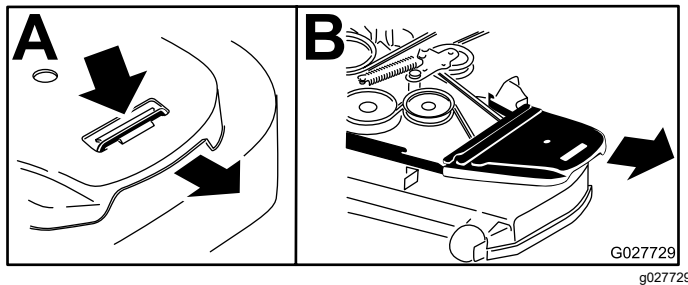


Figure 4

1. Push tab down.
2. Remove belt cover.

3. **For 48-inch and 52-inch mowers only:** Loosen the bolts holding the right spindle to the mower deck (Figure 5).

Note: This will allow access to the nuts holding the right belt cover bracket to the mower deck.

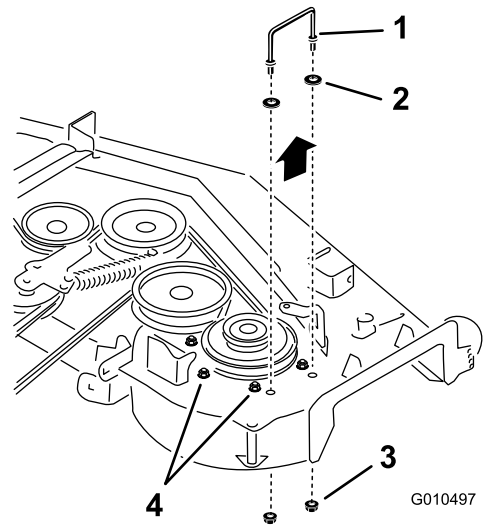


Figure 5

48-inch and 52-inch mower deck shown

1. Right belt cover bracket
2. Washer
3. Flange nut
4. Loosen these bolts.

4. Remove the existing right belt cover bracket (Figure 5 and Figure 6).

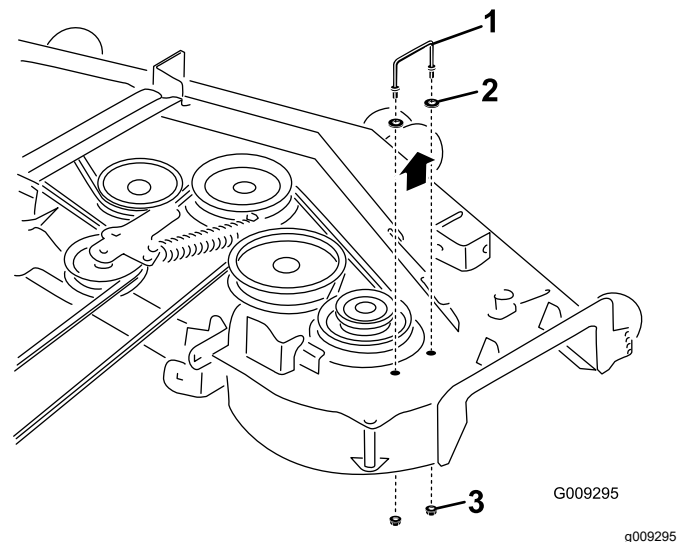


Figure 6

60-inch and 72-inch mower deck shown

1. Right belt cover bracket
2. Washer
3. Flange nut

5. Store the right belt cover, bracket, and hardware for later use if you remove the bagger blower and pulley.
6. Remove and retain the deck belt.

3

Installing the Pulley Assembly and Belt

Parts needed for this procedure:

1	Pulley assembly
1	Pulley-plate mount—for machines with an aluminum spindle only
3	Flange nut (3/8 inch)—for machines with an aluminum spindle only

For Machines with an Aluminum Spindle

1. Remove the top nut, washer, and sheave from the spindle (Figure 7).

Note: Note the orientation of the sheave when you remove it from the spindle to ensure that you install it properly later in the process.

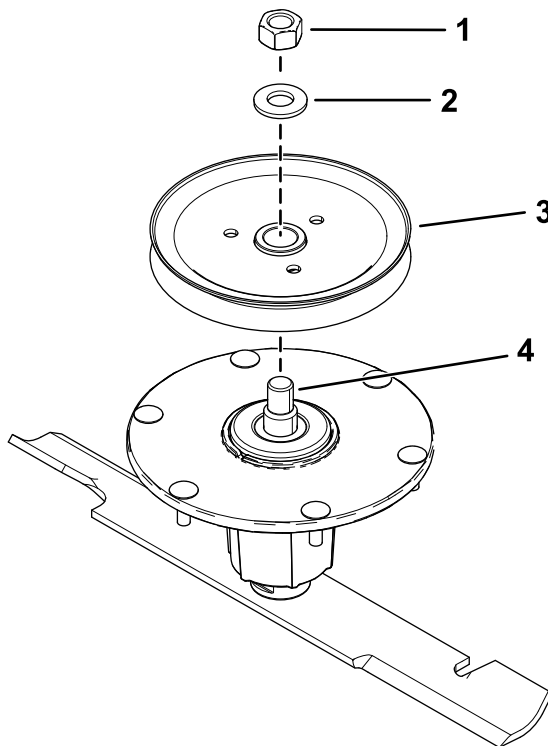


Figure 7

1. Top nut
2. Washer
3. Sheave
4. Spindle

2. Insert the pulley-plate mount studs into the holes in the sheave (Figure 8).

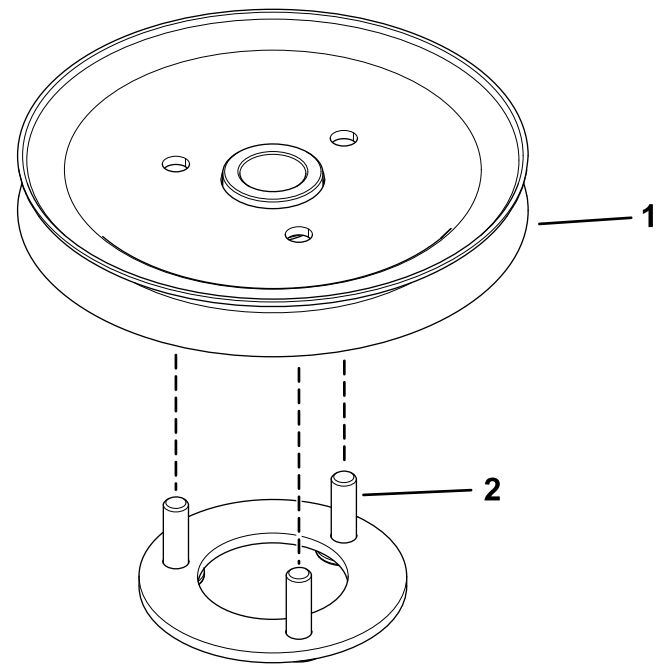


Figure 8

1. Sheave
2. Pulley-plate mount studs

g302390

g302393

3. Install the sheave assembly to the spindle using the washer and top nut (Figure 9).

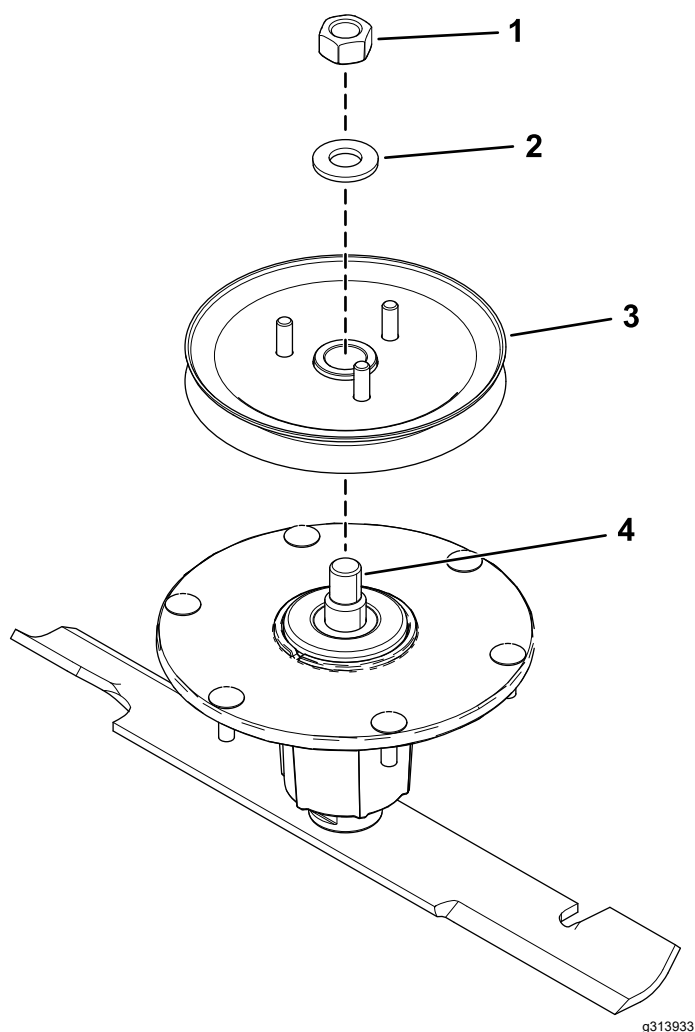


Figure 9

- | | |
|------------|--------------------|
| 1. Top nut | 3. Sheave assembly |
| 2. Washer | 4. Spindle |

4. Torque the top nut to 176 to 217 N·m (130 to 160 ft-lb).

Note: Ensure that the sheave spins freely.

5. Align the new pulley assembly so that the openings fit over the studs (Figure 10).
6. Turn the pulley to lock it into position (Figure 10).
7. After the new pulley assembly is in position, install the nuts to secure the new pulley assembly (Figure 10).

Torque the 3 nuts to 28 to 34 N·m (21 to 25 ft-lb).

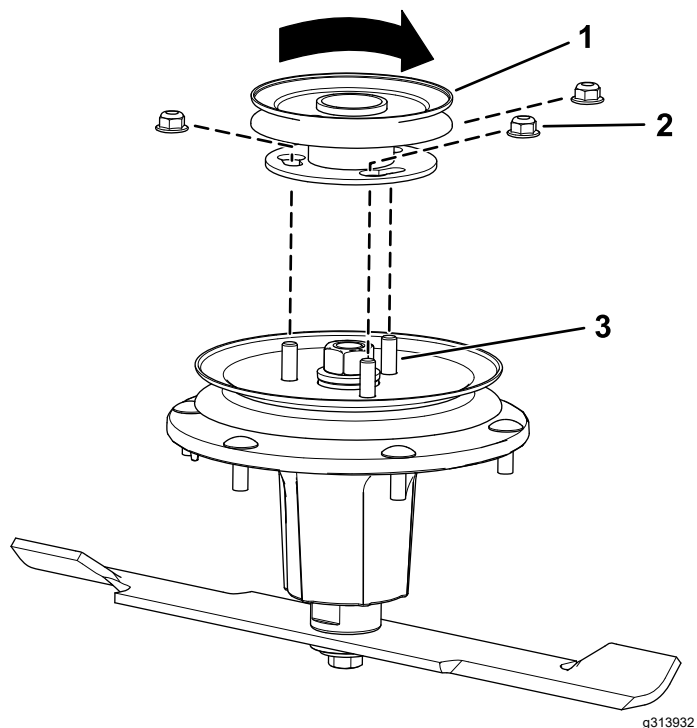


Figure 10

- | | |
|--------------------|---------|
| 1. Pulley assembly | 3. Stud |
| 2. Nut | |

8. Install the deck belt.

For Machines with Bolts

1. Loosen, but do not remove, the tapping bolts on the existing mower-deck pulley (Figure 11).
2. Align the new pulley assembly so that the openings fit over the pulley bolt heads (Figure 11).
3. Turn the pulley to lock it into position (Figure 11).

Note: If the pulley does not turn, loosen the bolts more to raise the bolt heads and allow the pulley to lock into position.

4. After the new pulley assembly is in position, tighten the existing bolts to secure new pulley assembly.

Note: Torque the bolts to 28 to 34 N·m (21 to 25 ft-lb).

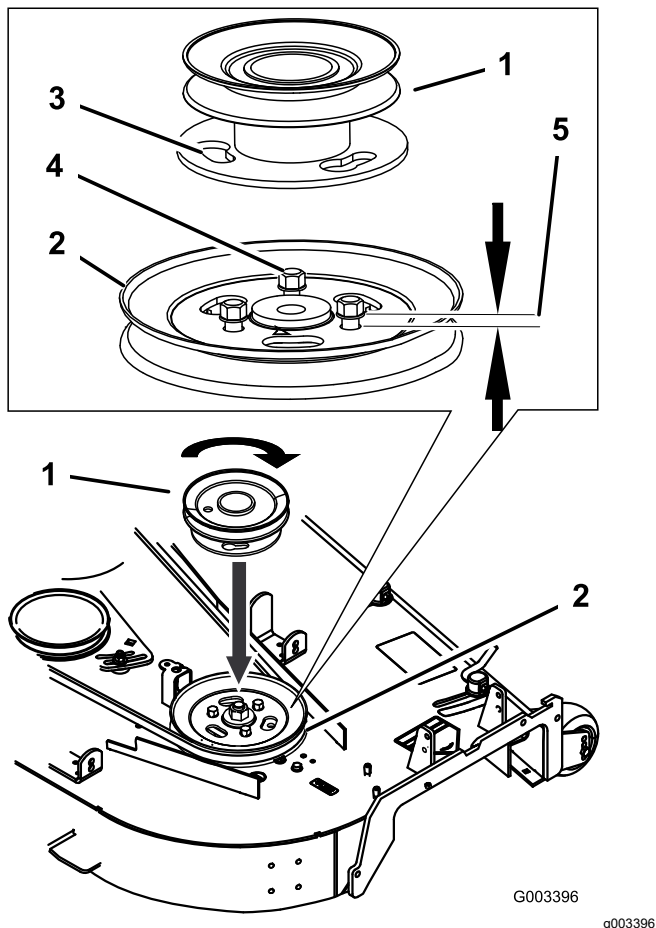


Figure 11

- | | | |
|----------------------|------------------|-------------------------------|
| 1. Pulley assembly | 3. Locking slots | 5. Clearance—5 mm (3/16 inch) |
| 2. Mower-deck pulley | 4. Bolt heads | |

For Machines without Bolts

1. Remove the nuts on the existing mower-deck pulley (Figure 12).
2. Install the new pulley assembly onto the mower-deck pulley bolts (Figure 12).
3. Turn the pulley to lock it into position (Figure 12).
4. After the new pulley assembly is in position, install the nuts to secure new pulley assembly.

Note: Torque the nuts to 28 to 34 N·m (21 to 25 ft-lb).

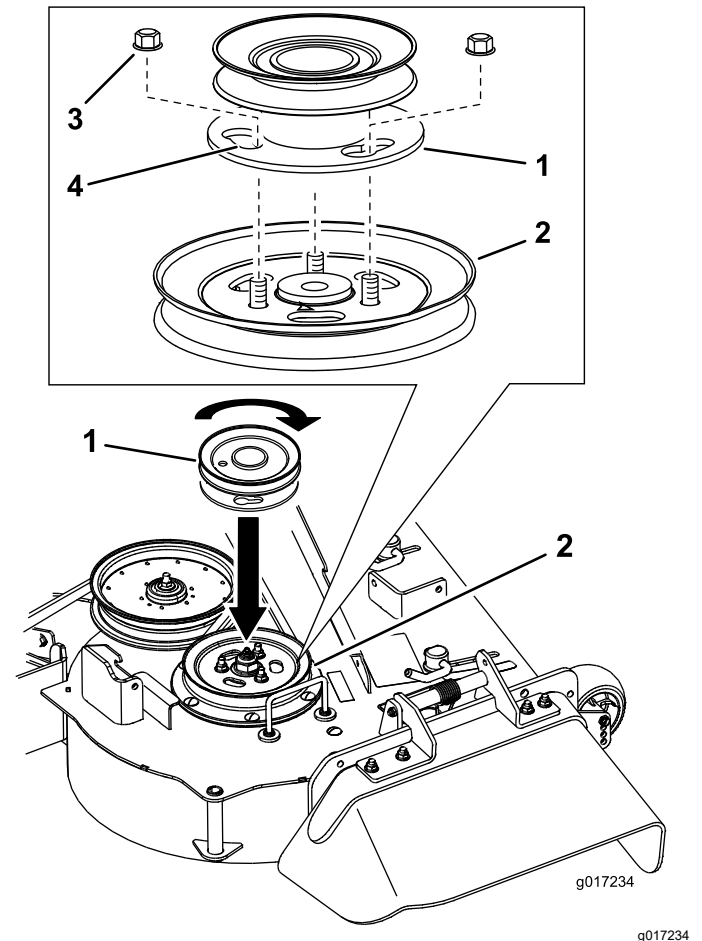


Figure 12

- | | | | |
|--------------------|----------------------|------------------|---------|
| 1. Pulley assembly | 2. Mower-deck pulley | 3. Locking slots | 4. Nuts |
|--------------------|----------------------|------------------|---------|

5. Install the deck belt.

4

Installing the New Belt Cover Bracket

48-inch and 52-inch Mowers

Parts needed for this procedure:

1	Belt cover bracket
2	Carriage bolt (1/4 x 3/4 inches)
2	Locknut (1/4 inch)

Procedure

Install the belt cover bracket with 2 carriage bolts (1/4 x 3/4 inches) and 2 locknuts (1/4 inch) as shown in [Figure 13](#).

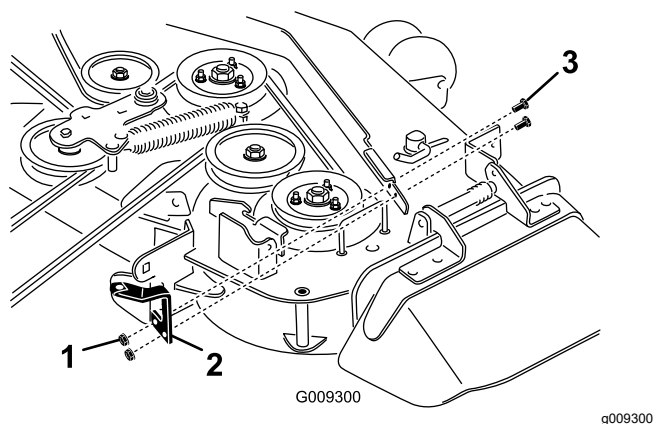


Figure 13

1. Locknut (1/4 inch)
2. Bracket for 48-inch and 52-inch mower decks
3. Carriage bolt (1/4 x 3/4 inches)

5

Installing the New Belt Cover Bracket

60-inch and 72-inch Mowers

Parts needed for this procedure:

1	Belt cover bracket
2	Carriage bolt (1/4 x 3/4 inches)
2	Locknut (1/4 inch)

Procedure

Install the belt cover bracket with 2 carriage bolts (1/4 x 3/4 inches) and 2 locknuts (1/4 inch) as shown in [Figure 14](#).

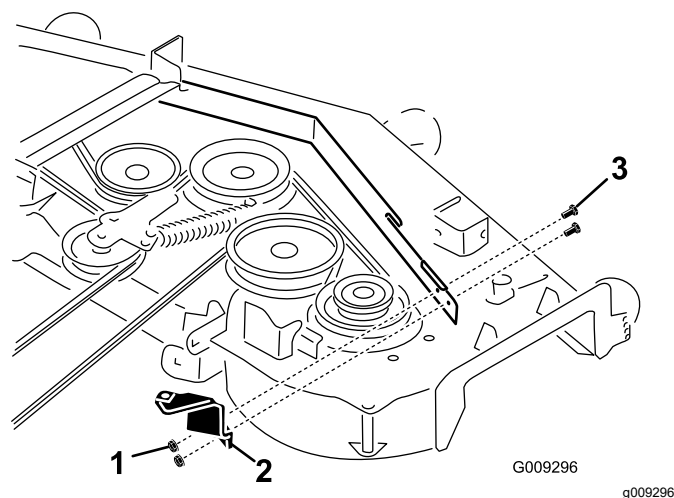


Figure 14

1. Locknut (1/4 inch)
2. Bracket for 60-inch and 72-inch mower decks
3. Carriage bolt (1/4 x 3/4 inches)

6

Installing the Blower Assembly, Bagger Belt, Spring and Blower-Belt Cover

Parts needed for this procedure:

1	Blower assembly
1	Bagger belt
1	Blower belt cover
1	Spring

Procedure

Refer to the bagger *Operator's Manual* for the correct procedure to install the blower, bagger belt, spring, and blower-belt cover.

California Proposition 65 Warning Information

What is this warning?

You may see a product for sale that has a warning label like the following:



WARNING: Cancer and Reproductive Harm—www.p65Warnings.ca.gov.

What is Prop 65?

Prop 65 applies to any company operating in California, selling products in California, or manufacturing products that may be sold in or brought into California. It mandates that the Governor of California maintain and publish a list of chemicals known to cause cancer, birth defects, and/or other reproductive harm. The list, which is updated annually, includes hundreds of chemicals found in many everyday items. The purpose of Prop 65 is to inform the public about exposure to these chemicals.

Prop 65 does not ban the sale of products containing these chemicals but instead requires warnings on any product, product packaging, or literature with the product. Moreover, a Prop 65 warning does not mean that a product is in violation of any product safety standards or requirements. In fact, the California government has clarified that a Prop 65 warning "is not the same as a regulatory decision that a product is 'safe' or 'unsafe.'" Many of these chemicals have been used in everyday products for years without documented harm. For more information, go to <https://oag.ca.gov/prop65/faqs-view-all>.

A Prop 65 warning means that a company has either (1) evaluated the exposure and has concluded that it exceeds the "no significant risk level"; or (2) has chosen to provide a warning based on its understanding about the presence of a listed chemical without attempting to evaluate the exposure.

Does this law apply everywhere?

Prop 65 warnings are required under California law only. These warnings are seen throughout California in a wide range of settings, including but not limited to restaurants, grocery stores, hotels, schools, and hospitals, and on a wide variety of products. Additionally, some online and mail order retailers provide Prop 65 warnings on their websites or in catalogs.

How do the California warnings compare to federal limits?

Prop 65 standards are often more stringent than federal and international standards. There are various substances that require a Prop 65 warning at levels that are far lower than federal action limits. For example, the Prop 65 standard for warnings for lead is 0.5 µg/day, which is well below the federal and international standards.

Why don't all similar products carry the warning?

- Products sold in California require Prop 65 labelling while similar products sold elsewhere do not.
- A company involved in a Prop 65 lawsuit reaching a settlement may be required to use Prop 65 warnings for its products, but other companies making similar products may have no such requirement.
- The enforcement of Prop 65 is inconsistent.
- Companies may elect not to provide warnings because they conclude that they are not required to do so under Prop 65; a lack of warnings for a product does not mean that the product is free of listed chemicals at similar levels.

Why does Toro include this warning?

Toro has chosen to provide consumers with as much information as possible so that they can make informed decisions about the products they buy and use. Toro provides warnings in certain cases based on its knowledge of the presence of one or more listed chemicals without evaluating the level of exposure, as not all the listed chemicals provide exposure limit requirements. While the exposure from Toro products may be negligible or well within the "no significant risk" range, out of an abundance of caution, Toro has elected to provide the Prop 65 warnings. Moreover, if Toro does not provide these warnings, it could be sued by the State of California or by private parties seeking to enforce Prop 65 and subject to substantial penalties.



Count on it.