



Handle Pin Kit

HoverPro® 450 Machine

Model No. 162-1351

Addendum

This addendum is for HoverPro® 450 model 02616.

These procedures replace the existing “Installing the Handlebar Footstop” (Number 1) and “Installing the Handlebar” (Number 2) procedures in your machine *Operator's Manual* (Form No. 3459-573).

Setup

Loose Parts

Use the chart below to verify that all parts have been shipped.

Procedure	Description	Qty.	Use
1	Lower handlebar (included with the machine)	-	Install the footstop.
	Footstop	1	
	Washer (6 mm)	2	
	Locknut (6 mm)	1	
2	Handle spacer	4	Assemble the lower handlebar.
	Clevis pin and hairpin cotter assembly	2	
	Washer (6 mm)	6	
	Knob	2	
	U-bolt	2	
	Upper handlebar (included with the machine)	-	
	Bolt (1/4 x 1-3/4 inches)	1	
	Locknut (1/4 inch)	1	



1

Installing the Handlebar Footstop

Parts needed for this procedure:

-	Lower handlebar (included with the machine)
1	Footstop
2	Washer (6 mm)
1	Locknut (6 mm)

Procedure

Note: You can only use the footstop to support the handlebar in the vertical position when you assemble the handlebar in the lower position (103.4 cm or 40-3/4 inches).

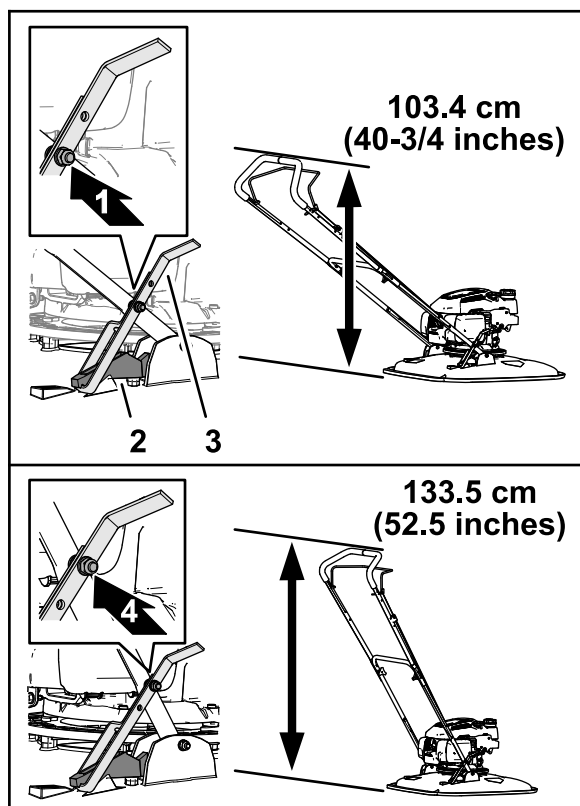
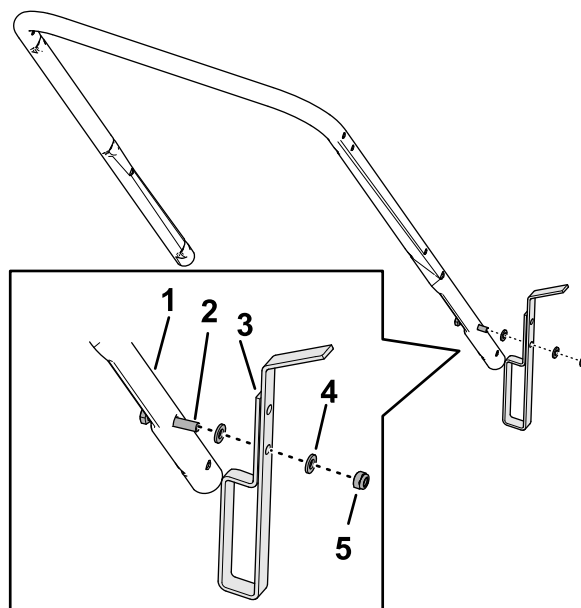


Figure 1

g367240

1. Low-handlebar position
2. Upstop bracket
3. Footstop
4. High-handlebar position

2. Align the hole in the footstop with the bolt welded to the lower handlebar (Figure 2).



g564605

Figure 2

1. Lower handlebar
2. Bolt (welded to the lower handlebar)
3. Footstop
4. Washer (6 mm)
5. Locknut (6 mm)

3. Assemble the footstop to the handlebar with the welded bolt, 2 washers (6 mm), and locknut (6 mm).
4. Tighten the locknut and bolt.

Note: Ensure that you can pivot the footstop.

1. Determine the handlebar height when the footstop is secured to the upstop bracket (Figure 1).

2

Installing the Handlebar

Parts needed for this procedure:

4	Handle spacer
2	Clevis pin and hairpin cotter assembly
6	Washer (6 mm)
2	Knob
2	U-bolt
-	Upper handlebar (included with the machine)
1	Bolt (1/4 x 1-3/4 inches)
1	Locknut (1/4 inch)

Assembling the Lower Handlebar to the Machine

1. Insert 2 handle spacers into each of the handlebar flanges on the mower deck (Figure 3).

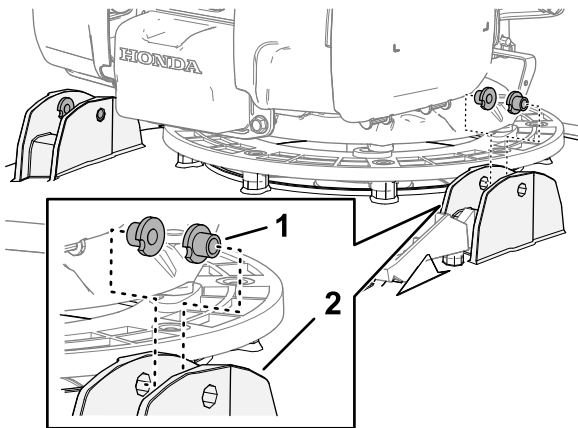


Figure 3

1. Handle spacer
2. Handlebar flange

2. Align the handlebar foot stop to the up-stop bracket on the deck (Figure 4).



Figure 4

1. Up-stop bracket
2. Footstop

3. Align the handlebar hole with the handle spacer holes. Secure the handlebar to the machine using a clevis pin, 2 washers (6 mm), and a hairpin cotter.

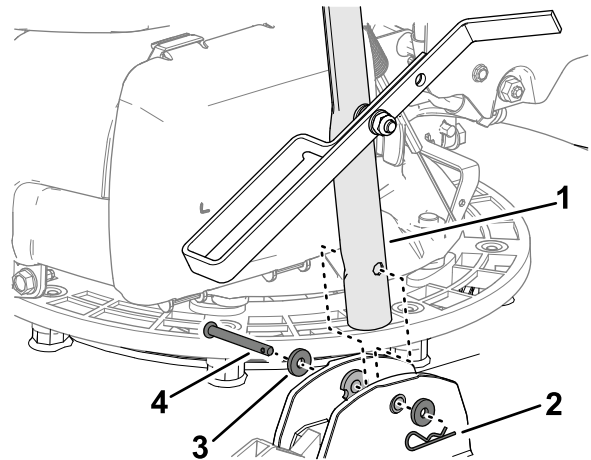


Figure 5

1. Handlebar
2. Hairpin cotter
3. Washer (2)
4. Clevis pin

4. Repeat step 3 at the other side of the machine.

Assembling the Upper and Lower Handlebars

1. Align the holes on the upper handlebar with the holes in the lower handlebar ([Figure 6](#)).

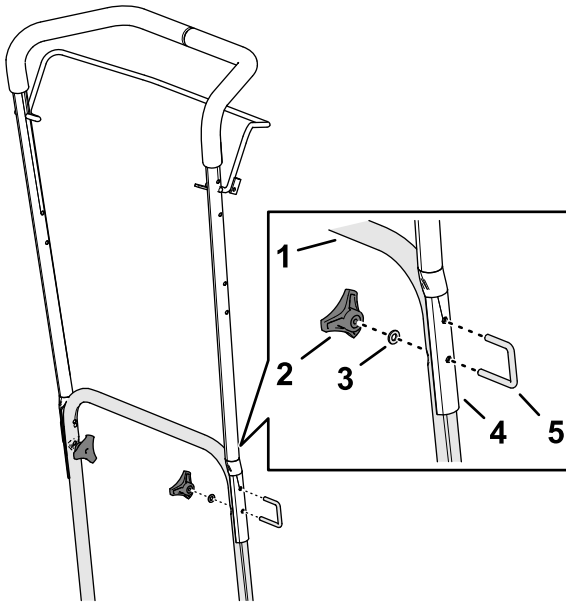


Figure 6

g364684

- | | |
|--------------------|--------------------|
| 1. Lower handlebar | 4. Upper handlebar |
| 2. Knob | 5. U-bolt |
| 3. Washer (6 mm) | |

2. Assemble the upper handlebar to the lower handlebar with the 2 U-bolts, 2 washers (6 mm), and 2 knobs.

Assembling the Cable to the Operator-Presence Bail

1. Insert the fitting at the end of the cable sheath into the upper socket of the handlebar fitting ([Figure 7](#)).

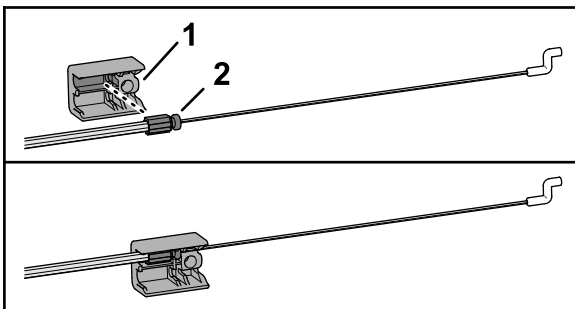


Figure 7

g367356

- | | |
|----------------------|---------------------------|
| 1. Handlebar fitting | 2. Fitting (cable sheath) |
|----------------------|---------------------------|

2. Squeeze the leg of the operator-presence bail until you can remove it from the upper handlebar, and remove the bail from the machine ([Figure 8](#)).

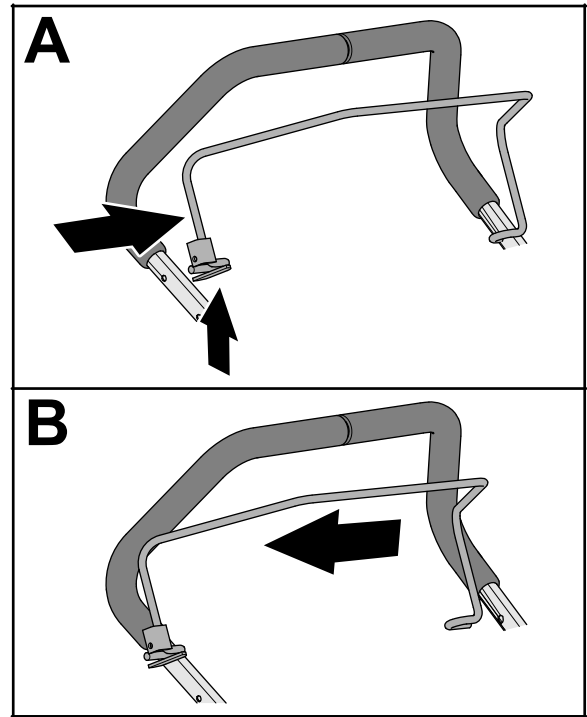


Figure 8

g367353

3. Insert the cable fitting through the hole in the bracket of the operator-presence bail as shown in [Figure 9](#).

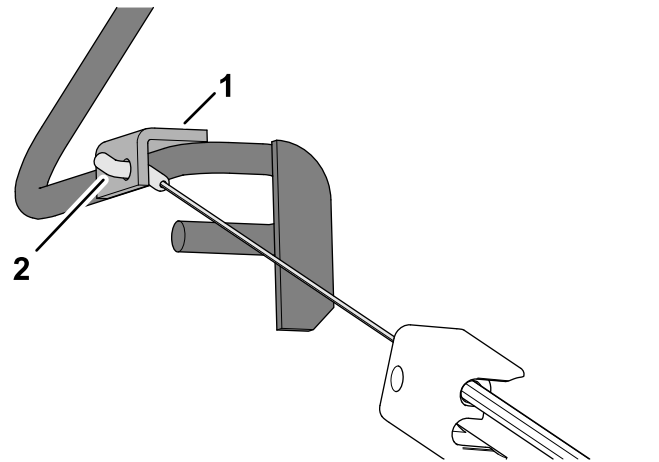


Figure 9

g367355

- | | |
|-------------------------------------|------------------|
| 1. Bracket (operator-presence bail) | 2. Cable fitting |
|-------------------------------------|------------------|

4. Insert the end of the operator-presence bail into the handlebar, squeeze the other leg of bail slightly, and insert the bail into the handlebar ([Figure 11](#)).

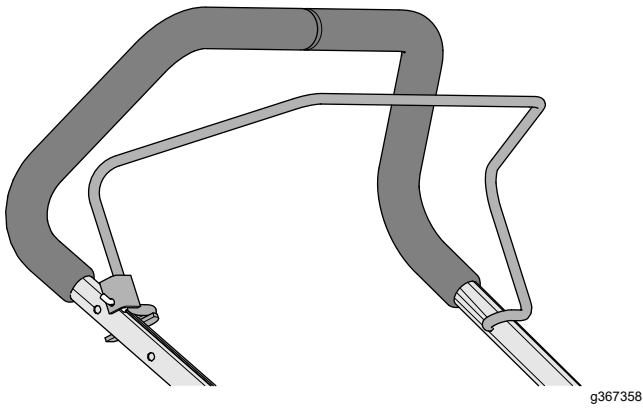


Figure 10

-
5. Secure the handlebar fitting to the upper handlebar (Figure 11) with the bolt (1/4 x 1-3/4 inches) and locknut (1/4 inch).

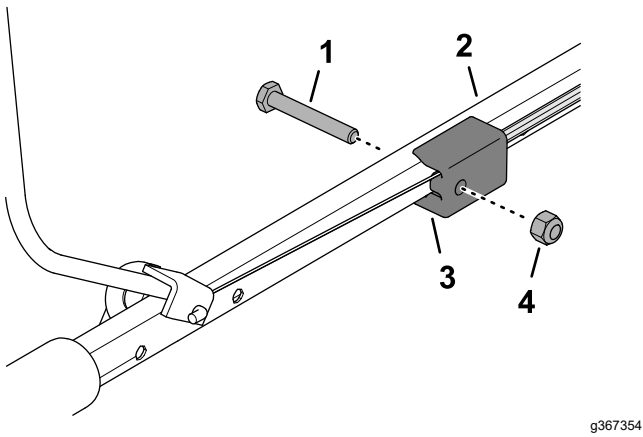


Figure 11

- | | |
|------------------------------|-----------------------|
| 1. Bolt (1/4 x 1-3/4 inches) | 3. Handlebar fitting |
| 2. Upper handlebar | 4. Locknut (1/4 inch) |
-

Notes:

Notes:



Count on it.