



Groundsmaster® 4700-D

Groundsmaster Traction Unit

Model No. 30868—Serial No. 230000701 and Up

Form No. 3350-721

CE Compliance Set Up Instructions

Note: Determine the left and right sides of the machine from the normal operating position.

Loose Parts

Note: Use this chart as a checklist to ensure that all parts necessary for assembly have been received. Without these parts, total setup cannot be completed. Some parts may have already been assembled at the factory.

Description	Qty.	Use
Throttle stop	1	Install for CE compliance
Set screw	1	
Lift latch	1	Install on control console for CE compliance
Latch bracket –R.H.	1	
Latch bracket –L.H.	1	
Flange lock nut 1/4–20	2	
Lock bracket	1	Install on hood latch for CE compliance
Screw 1/4–20 x 1/2"	1	
Washer .281 x .625	1	
Lock nut 1/4–20	1	
EEC decals	2	Apply to machine for CE compliance.
EEC certificate	2	

Install Throttle Stop

1. Loosen set screw on throttle stop.
2. Slide throttle stop onto high idle stop screw (Fig. 1). Slot in throttle stop to be positioned over rib on engine.
3. Start engine and allow to run for 5 to 10 minutes. The temperature gauge needle should be in the yellow before proceeding to next step.
4. If cutting units are equipped with standard angled sail blades, adjust high idle to 2530 rpm with the cutting units disengaged. If equipped with high lift parallel sail blades, adjust high idle to 2440 rpm with the cutting units disengaged.
5. Tighten setscrew. Apply adhesive into setscrew to prevent tampering.

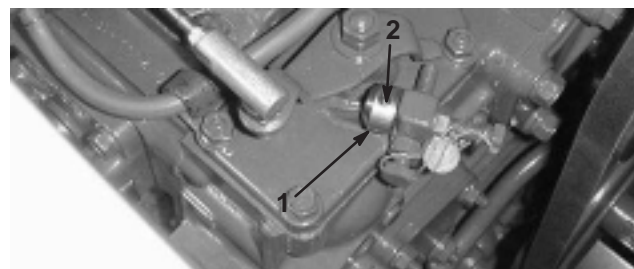


Figure 1

1. Throttle stop 2. Set screw

Install Cutting Unit Lift Latch

1. Rotate latches and remove control panel cover (Fig. 2).

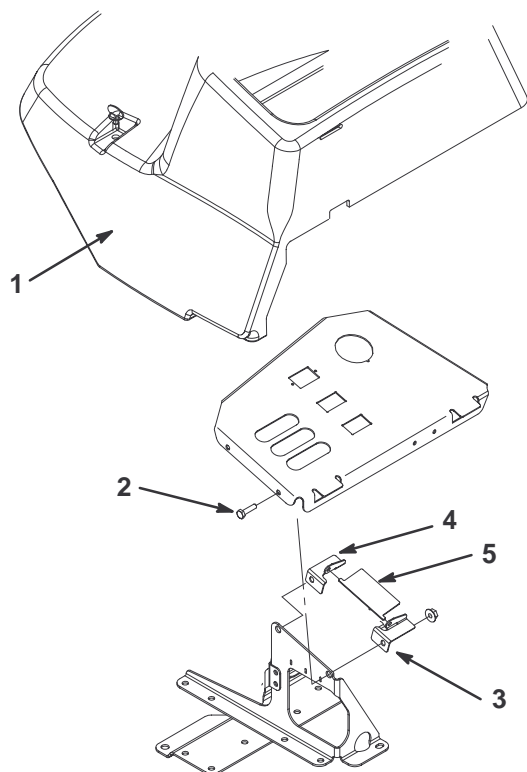


Figure 2

- | | |
|----------------------------|-----------------------|
| 1. Operators control panel | 4. R.H. latch bracket |
| 2. Capscrews | 5. Lift latch |
| 3. L.H. latch bracket | |

2. Under front of control panel, locate ends of capscrews securing control panel to frame (Fig. 2).
3. Insert left hand latch bracket up thru lift lever slot and onto capscrew. Loosely secure with 1/4–20 flange nut (Fig. 2).
4. Insert right hand latch bracket up thru lift lever slot and onto capscrew. Loosely secure with 1/4–20 flange nut (Fig. 2).
5. On top of control panel, insert each end tab of lift latch into holes in latch brackets (Fig. 2). Tighten flange nuts.

Installing the Hood Latch

1. Unhook the hood latch from the hood latch bracket (Fig. 3).
2. Slide the hood lock bracket onto the latch (Fig. 3).
3. Hook the latch onto the hood latch bracket (Fig. 3).
4. Insert a bolt (1/4 x 1-1/2 in.) through the hood lock bracket and secure it with a flat washer and locknut (Fig. 3).

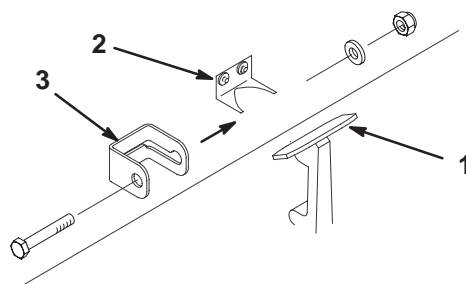


Figure 3

- | | |
|-----------------------|----------------------|
| 1. Hood latch | 3. Hood lock bracket |
| 2. Hood latch bracket | |