



EU Charger Connector Kit

Groundsmaster® e3200 or e3300 Traction Unit

Model No. 161-5101

Installation Instructions

Installation

Loose Parts

Use the chart below to verify that all parts have been shipped.

Procedure	Description	Qty.	Use
1	No parts required	–	Prepare the machine.
2	No parts required	–	Remove the existing charger connector.
3	Charger connector	1	Install the charger connector.
	Connector plate	1	
	Screw (5/16 inch)	2	

1

Preparing the Machine

No Parts Required

Procedure

1. Park the machine on a level surface.
2. Ensure that the parking brake is engaged.
3. Shut off the machine and remove the key.
4. Turn the battery-disconnect switch to the OFF position.

2

Removing the Existing Charger Connector

No Parts Required

Procedure

1. Remove the bolts and screws that secure the cover to the left side of the machine ([Figure 1](#)) and remove the cover.



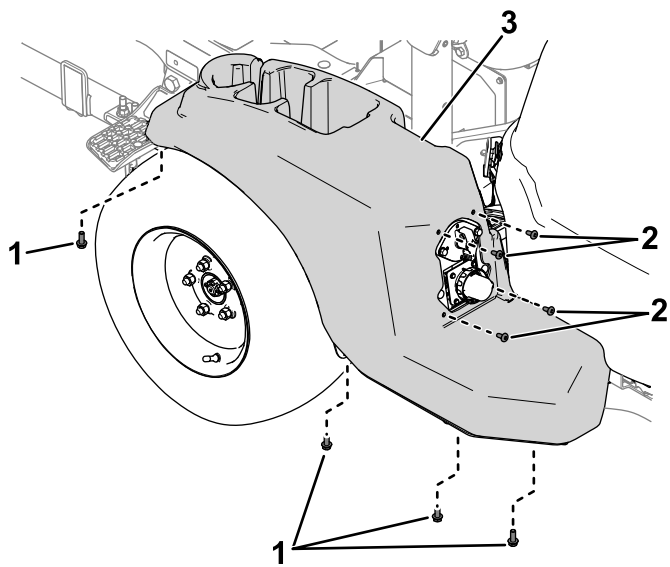


Figure 1

g515696

1. Bolts
2. Screws
3. Cover

2. Remove the hardware that secures the charger connector and connector plate to the frame panel ([Figure 2](#)).

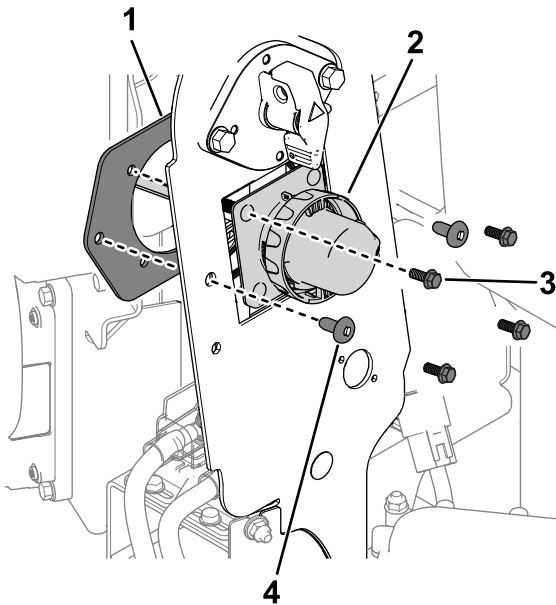


Figure 2

g515709

1. Connector plate
2. Charger connector
3. Bolt
4. Screw

3. Unplug the charger connector from the charger-wire-harness connector and remove the charger connector from the machine.

3

Installing the Charger Connector

Parts needed for this procedure:

1	Charger connector
1	Connector plate
2	Screw (5/16 inch)

Procedure

1. Use 2 screws (5/16 inch) and the existing screws, washers, and nuts on the charger connector to secure the connector and connector plate to the frame panel ([Figure 3](#)).

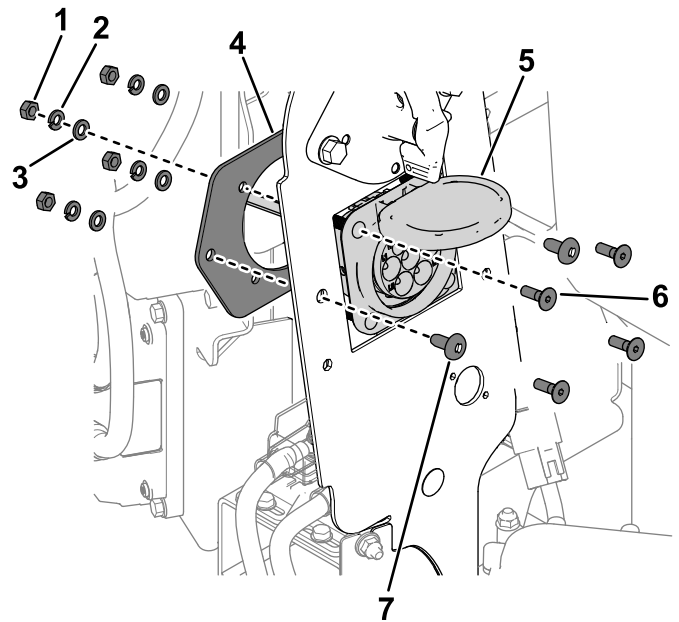
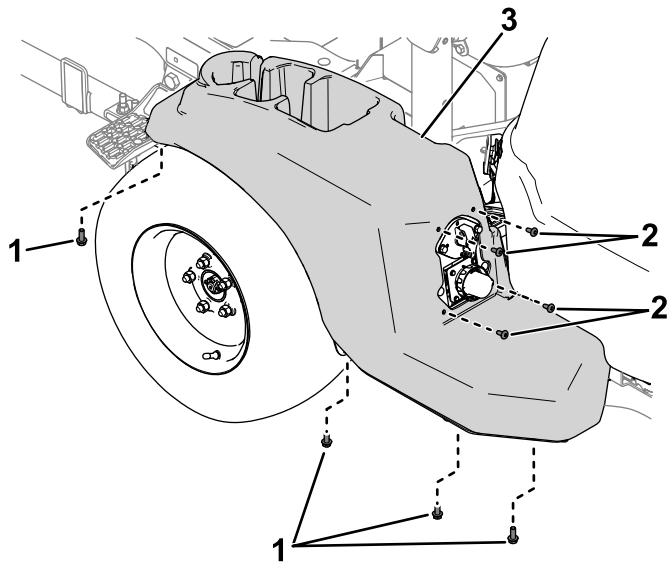


Figure 3

g515516

1. Nut
2. Flat washer
3. Lock washer
4. Connector plate
5. Charger connector
6. Screw
7. Screw (5/16 inch)

2. Install the wire-harness connectors for the charger connector as follows:
 - Connector labeled **P02**: Connect to the machine-wire-harness connector labeled P31 (CHARGER PORT INTERCONNECT).
 - Connector labeled **P03**: Connect to the AC-inlet connector labeled P02 (AC CHARGE PORT).
3. Use the previously removed screws and bolts to secure the cover to the left side of the machine ([Figure 4](#)).



g515696

Figure 4

- | | |
|-----------|----------|
| 1. Bolts | 3. Cover |
| 2. Screws | |



Count on it.