



Replacement Handle Kit

100 Series Z Masters with ROPS

Part No. 107-3089

Form No. 3350-728

Installation Instructions

Loose Parts

Note: Use the chart below to verify all parts have been shipped.

Step	Description	Qty.	Use
1	No parts needed	–	Removing the bagger arm
2	Bagger arm	1	Installing the bagger arm
3	Foam grip	1	Installing the latch lever
4	Cable Short clevis Clevis pin Cotter pin	1 1 1 1	Installing the new cable
5	No parts needed	–	Adjusting the bagger arm
6	Weight Weight bracket Large Washer Locknut, 5/16 inch Bolt, 5/16 x 1-1/4 inch Washer, 11/32	1 2 2 2 2 2	Installing the weight

Step

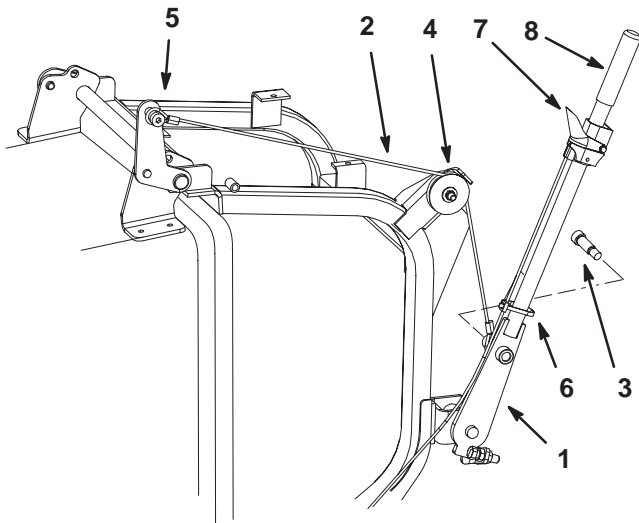
1

Removing the Existing Bagger Arm

No parts needed for this step.

Procedure

1. Remove the shoulder bolt and cable from the bagger arm (Fig. 1).
2. Loosen the nut and pulley on the bagger and remove the cable from the pulley (Fig. 1).
3. Remove the cable from the bagger door hinge (Fig. 1). Save all the hardware.



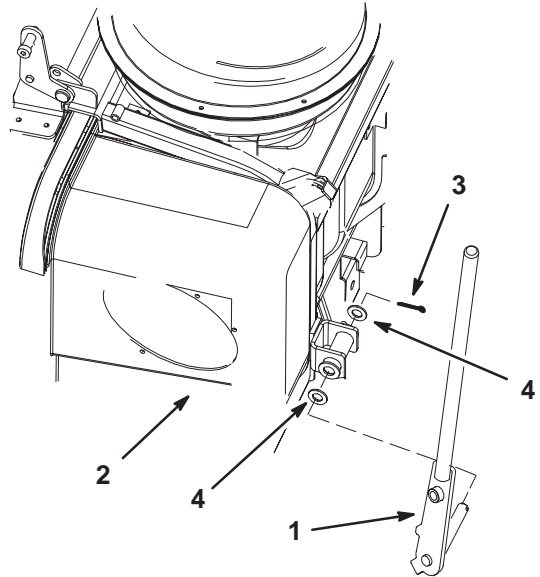
m-6136

Figure 1

- | | |
|-------------------|----------------------|
| 1. Bagger arm | 5. Bagger door hinge |
| 2. Cable | 6. Cable tie |
| 3. Shoulder bolt | 7. Latch lever |
| 4. Pulley and nut | 8. Grip |

4. Loosen the setscrew holding the latch lever (Fig. 5).
5. Remove the plastic cable ties on the handle and slide the latch lever down the handle (Fig. 1).
6. Remove the grip from the bagger arm (Fig. 3).

7. Remove the cotter pin and washer from the bagger arm (Fig. 2). Save the washer and cotter pin.
8. Slide the bagger arm and washer out from the bagger frame (Fig. 2). Save the washer.

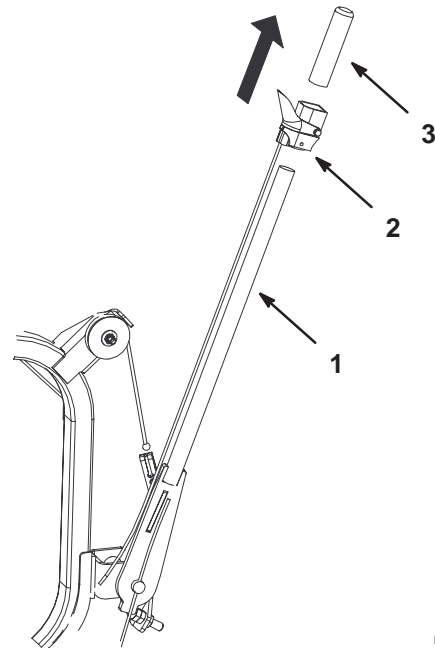


m-6206

Figure 2

- | | |
|---------------|---------------|
| 1. Bagger arm | 3. Cotter pin |
| 2. Bagger | 4. Washer |

9. Remove the latch lever off of the bagger arm and discard the the bagger arm (Fig. 3).



m-7173

Figure 3

- | | |
|----------------|--------------|
| 1. Bagger Arm | 3. Foam grip |
| 2. Latch lever | |

Step 2

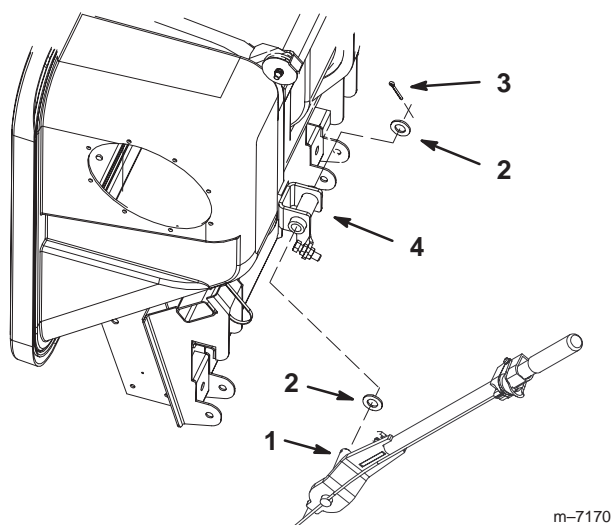
Installing the Bagger Arm

Parts needed for this step:

- 1 Dump handle

Procedure

1. Install the latch lever onto the bagger arm.
2. Install 1 washer previously removed onto the bagger arm pivot and install the bagger dump handle into the bagger frame (Fig. 4).
3. Secure the bagger handle with the previously removed washer and cotter pin (Fig. 4).



m-7170

Figure 4

- | | |
|---------------------|-----------------|
| 1. Bagger arm pivot | 3. Cotter pin |
| 2. Washer | 4. Bagger frame |

Step
3

Installing the Latch Lever

Parts needed for this step:

- 1 Foam grip

Procedure

1. Position the latch lever 5 inches (12.7 cm) down from the end of the bagger arm. See Figure 5.

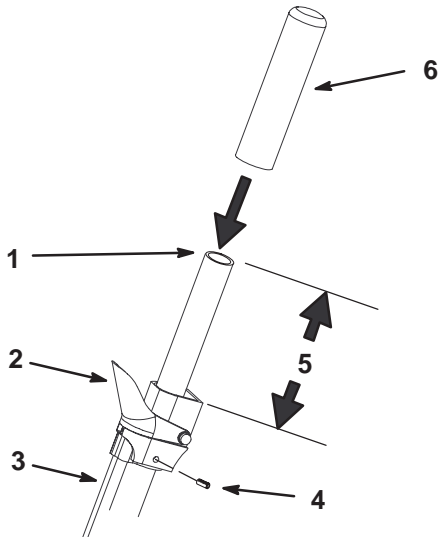


Figure 5

- | | |
|-------------------------|-----------------------|
| 1. Bagger arm end | 4. Set screw |
| 2. Latch lever position | 5. 5 inches (12.7 cm) |
| 3. Latch lever cable | 6. Foam grip |

2. Position the latch lever at the 10 o'clock position when looking at the end of the handle (Fig. 6).

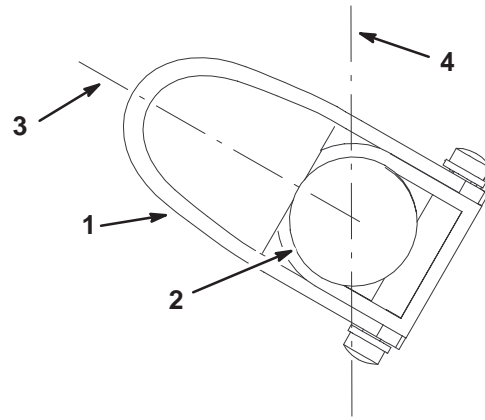


Figure 6

End view of handle

- | | |
|------------------|------------------------|
| 1. Latch lever | 3. 10 o'clock position |
| 2. End of handle | 4. 12 o'clock position |

3. Tighten the setscrew that holds the latch lever (Fig. 5).
4. Install the cable ties (Fig. 7).
5. Install the foam grip onto the bagger arm (Fig. 5).

m-7176

m-7175

Step
4

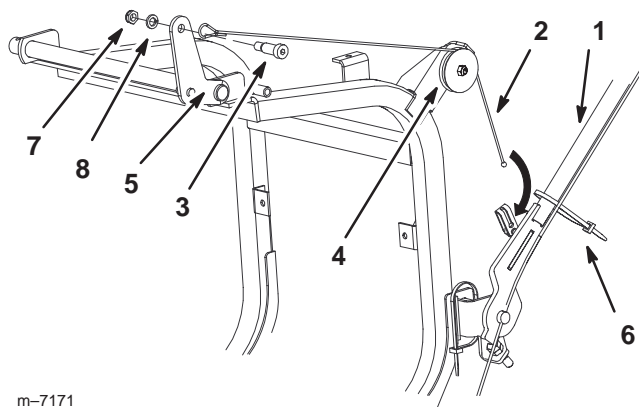
Installing the New Cable

Parts needed for this step:

- 1 Cable
- 1 Clevis pin
- 1 Clevis
- 1 Cotter pin

Procedure

1. Install the new cable to the top of the bagger with the previously removed shoulder bolt, washer and nut (Fig. 7).
2. Install the cable into the pulley and tighten the nut (Fig. 7).

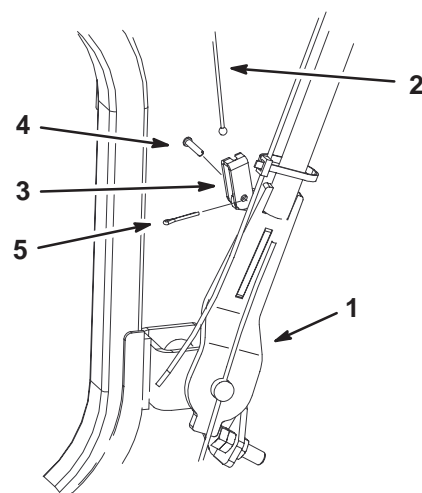


m-7171

Figure 7

- | | |
|-------------------|----------------------|
| 1. Bagger arm | 5. Bagger door hinge |
| 2. Cable | 6. Cable tie |
| 3. Shoulder bolt | 7. Nut |
| 4. Pulley and nut | 8. Washer |

3. Secure the bagger cable clevis to the bagger arm with the clevis pin and cotter pin (Fig. 8).
4. Install the cable into the cable clevis installed on the bagger handle (Fig. 8).



m-7174

Figure 8

- | | |
|-----------------|---------------|
| 1. Bagger arm | 4. Clevis pin |
| 2. Bagger cable | 5. Cotter pin |
| 3. Cable clevis | |

5. Adjust the handle stop, refer to Adjusting the Bagger Arm, page 6.

Step 5

No parts needed for this step.

Adjusting the Bagger Arm

The bagger arm needs to be adjusted to remove slack in the bagger cable.

1. Loosen the nuts on both sides of the stop bracket (Fig. 9).
2. Adjust the stop bolt until there is **no** slack in the bagger cable (Fig. 9).
3. Tighten the nuts on both sides of the stop bracket (Fig. 9).

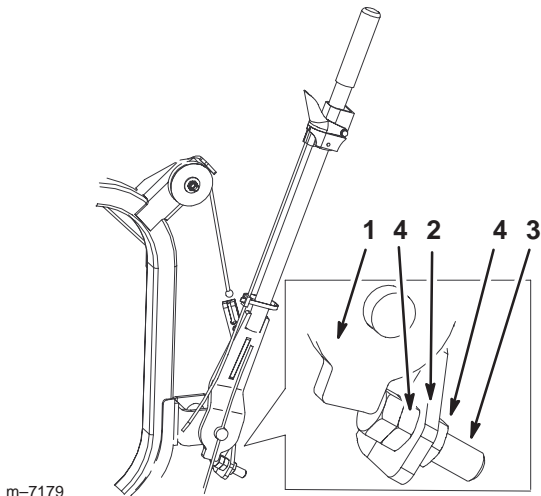


Figure 9

- | | |
|-----------------|--------------|
| 1. Bagger arm | 3. Stop bolt |
| 2. Stop bracket | 4. Nut |

Step 6

Installing the Weight

Parts needed for this step:

- Weight
- Weight bracket
- Washer,
- Locknut, 5/16 inch
- Bolt, 5/16 x 1-1/4 inch
- Washer,

Procedure

1. Remove the existing top bolts and washers from the front of the footpan. Save the washers.
2. Install the weight brackets to the front of the footpan with 2 bolts (5/16 x 1-1/4 inch) and 2 washers (1/2 inch) and 2 washers previously removed (Fig. 10).

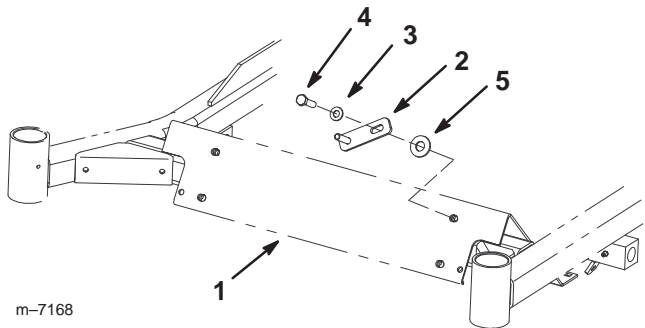


Figure 10

- | | |
|------------------------------|----------------------------|
| 1. Front of footpan | 4. Bolt, 5/16 x 1-1/4 inch |
| 2. Weight bracket | 5. Large washer |
| 3. Previously removed washer | |

3. Install the weight onto the weight brackets with 2 washers (5/16 inch) and 2 locknuts (5/16 inch) (Fig. 11).

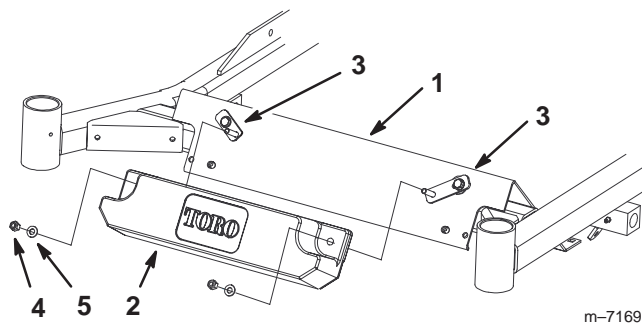


Figure 11

- | | |
|---------------------|-----------------------|
| 1. Front of footpan | 4. Locknut, 5/16 inch |
| 2. Weight | 5. Washer, 11/32 inch |
| 3. Weight bracket | |
-

