



Replacement Handle Kit 100 Series Z Master[®] with ROPS

Model No. 107-3089

Parts Catalog

Ordering Replacement Parts

To order replacement parts, please supply: the part number, the quantity, and the description of each part desired.

Understanding Reference Numbers

Each identified part in an illustration has a reference number. The reference number for a part also appears in the parts list, along with other information about the part.

This catalog uses two special reference number formats, one to indicate parts in a service assembly and another to indicate the quantity of a given part in an illustration.

Service Assembly Reference Numbers

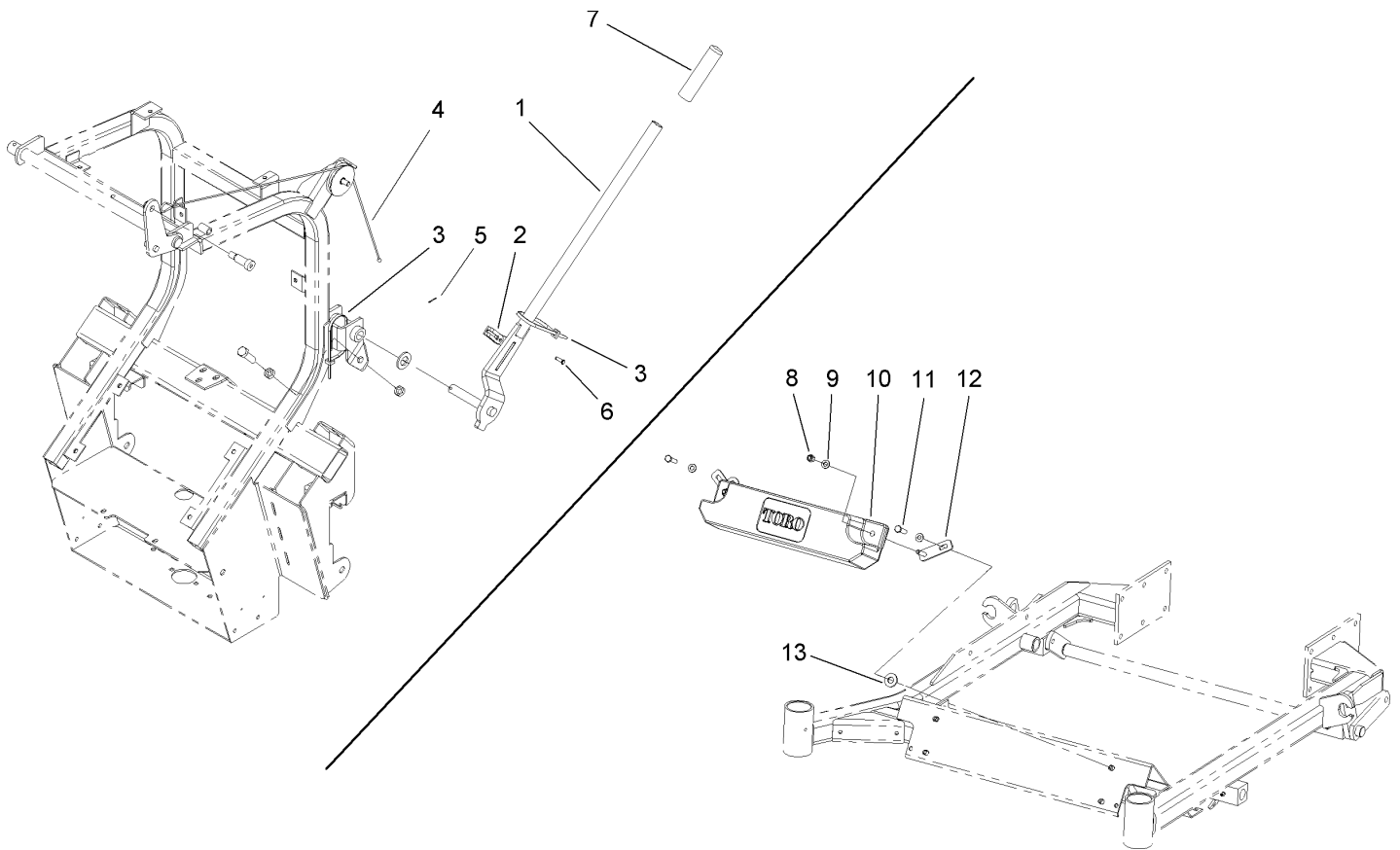
Parts in service assemblies have reference numbers in the form **a:b**. The **a** represents the reference number of the entire service assembly and the **b** represents a sequential number unique to each part within the service assembly.

For example, a wheel assembly might be identified by reference number 6, the tire by **6:1**, the valve by **6:2**, and the wheel by **6:3**. When you order the assembly identified by reference number 6, you receive all parts identified by reference numbers 6:1, 6:2, and 6:3. However, you may also order any part individually. Reference numbers of this type appear in illustrations and in part lists.

Reference Numbers Indicating Quantity

In an illustration, if a reference number indicates more than one part, the reference number has the form **nX y**. The **n** represents the quantity of the part, the **X** is the multiplication symbol, and the **y** represents the reference number.

For example, in an illustration, the reference number **2X 37** means that two of the parts identified by reference number 37 are indicated.



Weight and Dump Arm Assembly

Ref	Part No.	Qty.	Description
1	106-8954-03	1	Dump Arm ASM
2	108145	1	Clevis-Short
3	3290-378	2	Tie-Cable
4	107-3092	1	Cable
5	3272-1	1	Pin-Cotter
6	9321204	1	Pin-Clevis
7	104-9838	1	Grip-Foam
8	3296-29	2	Nut-Lock, NI
9	3256-23	2	Washer-Flat
10	105-3173-01	1	Weight-Rear
11	322-6	2	Screw-HH
12	107-3099	2	Arm Weight Mount ASM
13	29-8910	2	Washer

PROTOTYPE