



## 42in Single-Stage Snowthrower XT Series Garden Tractors

Model No. 79483 - 240000001 and up.

### Parts Catalog

---

#### Ordering Replacement Parts

To order replacement parts, please supply the part number, the quantity, and the description of each part desired.

#### Understanding Reference Numbers

Each Identified part in an illustration has a reference number. The reference number for a part also appears in the parts list, along with other information about the part.

This catalog uses two special reference number formats, one to indicate parts in a service assembly and another to indicate the quantity of a given part in an illustration.

#### Service Assembly Reference Numbers

Parts in service assemblies have reference numbers in the form a:b. The a represents the reference number of the entire service assembly and the b represents a sequential number unique to each part within the service assembly.

For example, a wheel assembly might be identified by reference number 6, the tire by 6:1, the valve by 6:2, and the wheel by 6:3. When you order the assembly identified by reference number 6, you receive all parts identified by reference numbers 6:1, 6:2, and 6:3. However, you may also order any part individually. Reference numbers of this type appear in illustrations and in part lists.

#### Reference Numbers Indicating Quantity

In an illustration, if a reference number indicates more than one part, the reference number has the form nX y. The n represents the quantity of the part, the X is the multiplication symbol, and the y represents the reference number.

For example, in an illustration, the reference number 2X 37 means that two of the parts identified by reference number 37 are indicated.

## Part Description Abbreviations

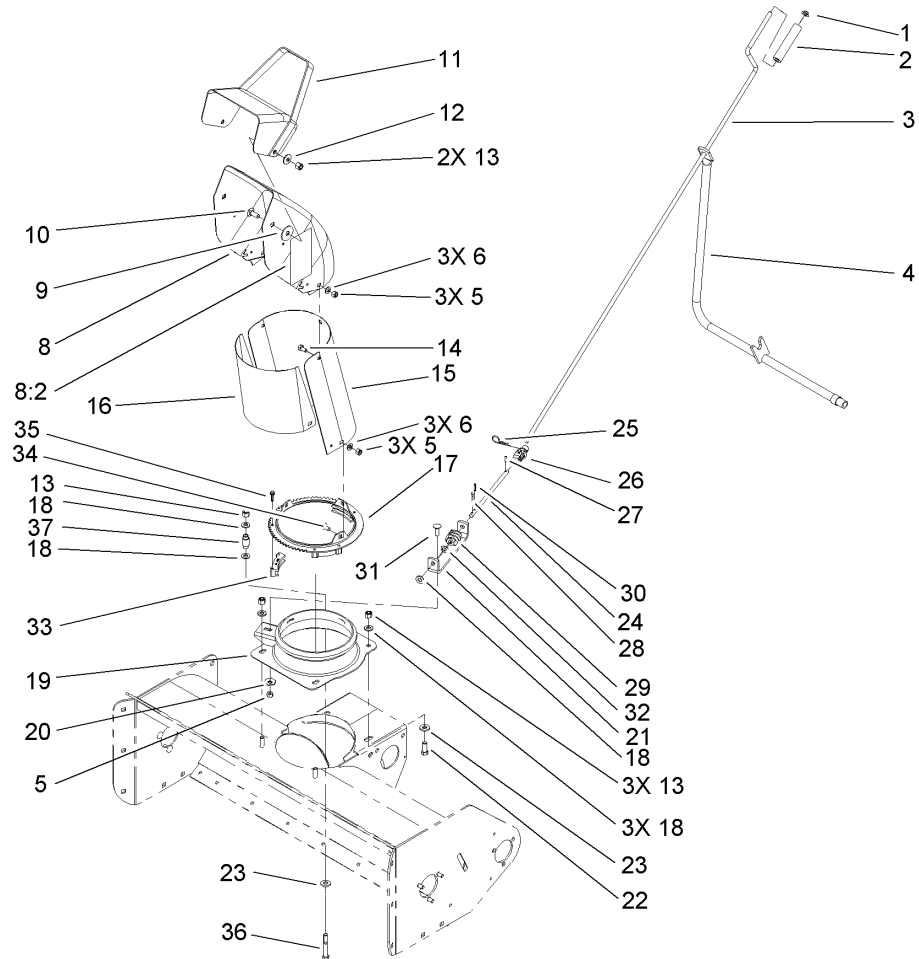
Part descriptions in this catalog may include the following abbreviations.

AR. ....	as required	HYD. ....	hydraulic
ASM. ....	assembly	INC. ....	incorporated
CARR. ....	carriage	LH. ....	left hand
DEG. ....	degrees	NI. ....	nylon insert
FH. ....	flat head	PPH. ....	phillips pan head
GA. ....	gauge	PTH. ....	phillips truss head
HF. ....	hex flange	PTO. ....	power take off
HH. ....	hex head	RH. ....	right hand
HHF. ....	hex head flange	SFH. ....	slotted fillister head
HHFTF. ....	hex head flange thread forming	SHH. ....	slotted hex head
HJ. ....	hex jam	SHWH. ....	slotted hex washer head
HLH. ....	hex lag head	SPH. ....	slotted pan head
HOC. ....	height-of-cut	SQH. ....	square head
HS. ....	hex	SRH. ....	slotted round head
HSBH. ....	hex socket button head	STD. ....	standard
HSFH. ....	hex socket flat head	TAP. ....	self tapping
HSH. ....	hex socket head	TTH. ....	torx truss head
HWH. ....	hex washer head	WH. ....	wing head
HWHTF. ....	hex washer head thread forming		

## Contents

<b>Description</b>	<b>Page</b>
Housing and Attachment System Assembly	..... 3
Chute and Rotation System Assembly	..... 4
Auger and Drive System Assembly	..... 5
Pulley and Hitch System Assembly	..... 6

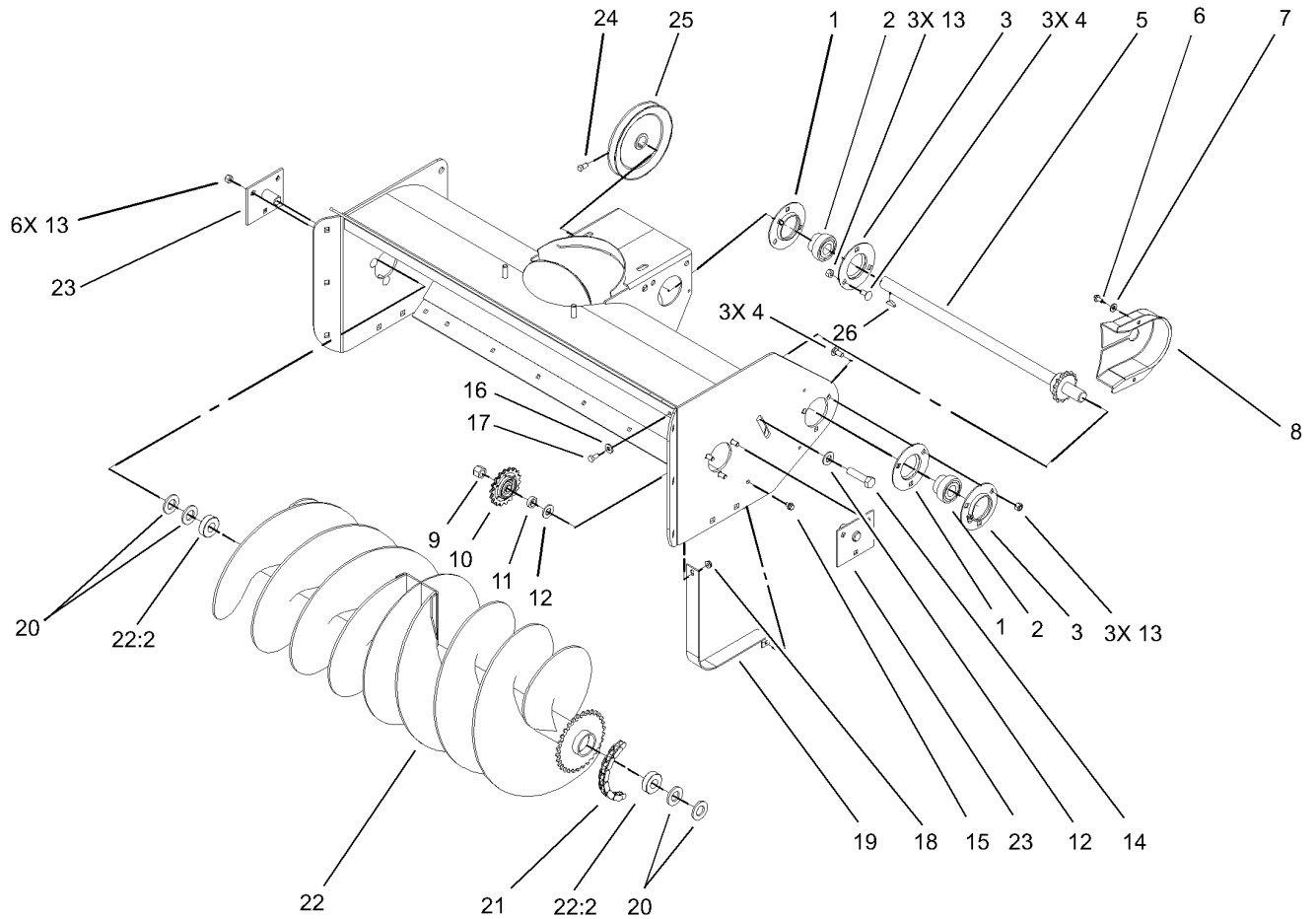




## Chute and Rotation System Assembly

Ref	Part No.	Qty.	Description
1	3290-320	1	Retainer-Push On
2	40-8230	1	Grip-Chute Control
3	79-4090	1	Rod-Chute Control
4	106-5559-03	1	Support Rod ASM
5	3296-29	7	Nut-Lock, NI
6	3256-23	6	Washer-Flat
8	94-1832	1	Chute
8:2	94-8079	2	Decal-Danger
9	20-4320	2	Washer-Rubber
10	3231-2	2	Screw-CARR
11	11-7120-01	1	Deflector
12	3290-340	2	Washer-Belleville
13	3296-39	6	Nut-Lock, NI
14	322-2	3	Screw-HH
15	26-1110-01	1	Extender-Chute, Upper
16	94-9787-01	1	Shield-Deflector
17	78-0160-01	1	Chute Swivel Ring
18	3256-24	6	Washer-Flat
19	78-0330-01	1	Adapter
20	3290-238	1	Washer-Lock
21	79-3770-03	1	Bracket-Worm
22	323-6	1	Screw-HH
23	9202414	2	Washer-Spacer
24	92-7046	1	Rod

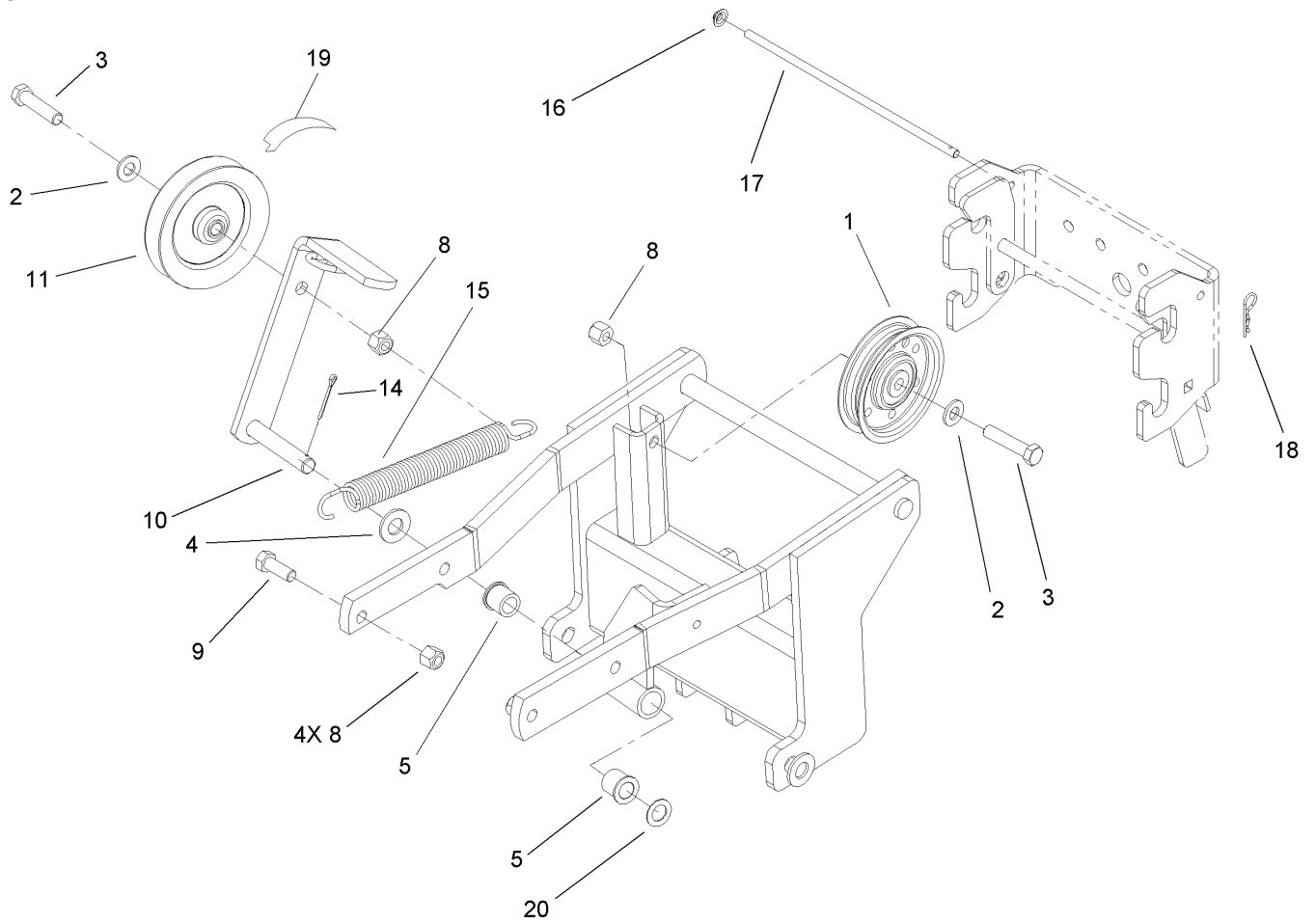
Ref	Part No.	Qty.	Description
25	9335054	1	Pin-Hair
26	94-2686	1	Joint-Universal
27	32121-47	1	Pin-Spring
28	3272-10	1	Pin-Cotter
29	8-8600	1	Gear-Worm, Chute
30	32121-50	1	Pin-Spring
31	3230-2	1	Bolt-CARR
32	3290-212	1	Washer-Spring
33	25-5450	3	Retainer-Chute
34	3230-1	3	Bolt-CARR
35	27-0220	6	Screw-Special
36	323-12	1	Screw-HH
37	52-2440	1	Spacer-Bearing



## Auger and Drive System Assembly

Ref	Part No.	Qty.	Description
1	110568	2	Flange
2	110569	2	Bearing And Collar
3	110567	2	Flange-Zerk Relube
4	3230-1	6	Bolt-CARR
5	79-4840-01	1	Shaft W/sprkt
6	9266714	2	Screw-HWH
7	3256-22	2	Washer-Flat
8	79-4000	1	Guard-Chain
9	3296-23	1	Nut-Lock, NI
10	93-1614	1	Sprocket-Idler
11	6417	1	Spacer
12	3256-26	2	Washer-Flat
13	3296-29	12	Nut-Lock, NI
14	325-8	1	Screw-HH
15	3234-26	1	Screw
16	3256-2	1	Washer-Flat
17	321-3	1	Screw-HH
18	32149-2	1	Nut
19	93-1619-01	1	Guard-Inner
20	3256-28	4	Washer-Flat
21	115165	1	Chain-64 Pitches
22	105-1478	1	Auger ASM
22:2	101480	2	Bearing-Ball
23	93-1618-01	2	Support

Ref	Part No.	Qty.	Description
24	3242-2	2	Screw-SQH
25	94-2998	1	Pulley
26	937225	1	Key-Hi-Pro



## Pulley and Hitch System Assembly

Ref	Part No.	Qty.	Description
1	106-2175	1	Pulley-Idler, Flat
2	3256-24	2	Washer-Flat
3	323-9	2	Screw-HH
4	3256-26	1	Washer-Flat
5	100284	2	Bushing
8	3296-39	6	Nut-Lock, NI
9	323-6	4	Screw-HH
10	106-5687-03	1	Idler Arm ASM
11	95-7668	1	Pulley-V, Idler
14	3272-7	1	Pin-Cotter
15	80-6610	1	Spring-Extension
16	3290-337	1	Nut-Speed
17	106-9922	1	Rod-Stop
18	9335044	1	Pin-Hair
19	54-1380	1	V-Belt, Jackshaft
20	98-1629	1	Washer

## NOTES

