



Brake Service Kit

2001 Domestic T-Bar Gear-Drive Mid-Size Mowers

Model No. 105-4654

Parts Catalog

Ordering Replacement Parts

To order replacement parts, please supply: the part number, the quantity, and the description of each part desired.

Understanding Reference Numbers

Each identified part in an illustration has a reference number. The reference number for a part also appears in the parts list, along with other information about the part.

This catalog uses two special reference number formats, one to indicate parts in a service assembly and another to indicate the quantity of a given part in an illustration.

Service Assembly Reference Numbers

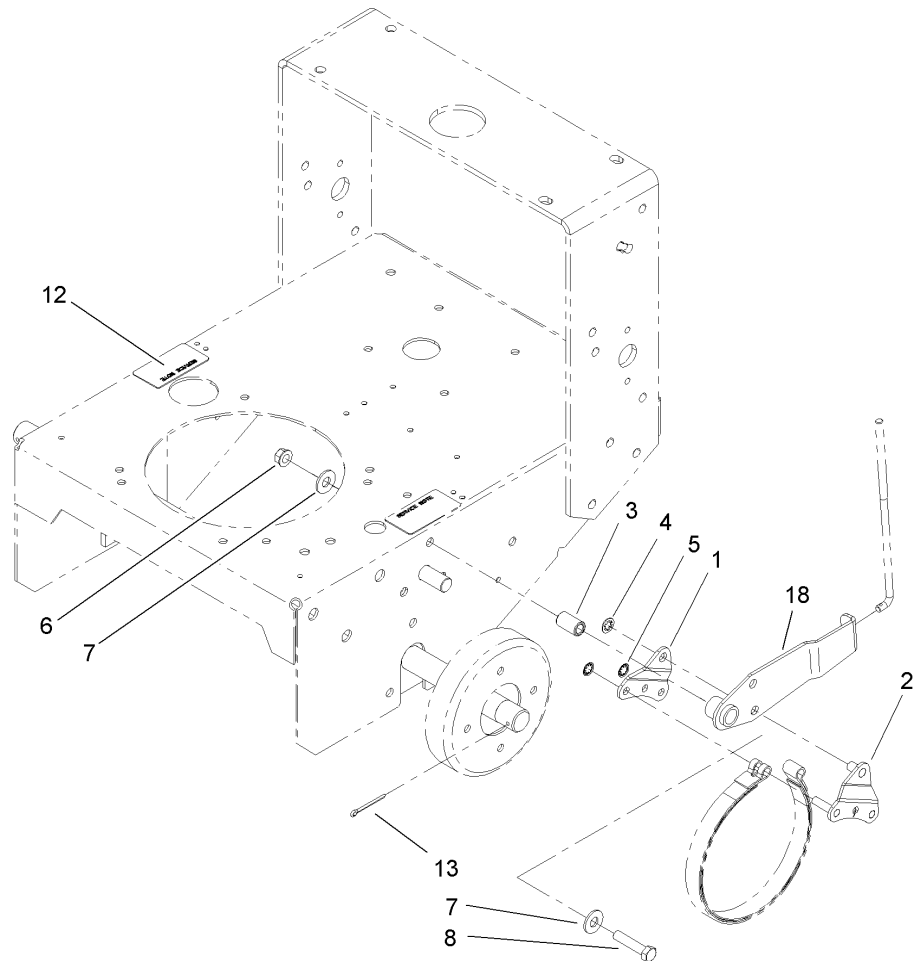
Parts in service assemblies have reference numbers in the form **a:b**. The **a** represents the reference number of the entire service assembly and the **b** represents a sequential number unique to each part within the service assembly.

For example, a wheel assembly might be identified by reference number 6, the tire by **6:1**, the valve by **6:2**, and the wheel by **6:3**. When you order the assembly identified by reference number 6, you receive all parts identified by reference numbers 6:1, 6:2, and 6:3. However, you may also order any part individually. Reference numbers of this type appear in illustrations and in part lists.

Reference Numbers Indicating Quantity

In an illustration, if a reference number indicates more than one part, the reference number has the form **nX y**. The **n** represents the quantity of the part, the **X** is the multiplication symbol, and the **y** represents the reference number.

For example, in an illustration, the reference number **2X 37** means that two of the parts identified by reference number 37 are indicated.



Brake Service Kit Assembly

Ref	Part No.	Qty.	Description
1	105-4651-01	2	Plate-Link, Brake
2	105-4652-01	2	Brake Link ASM
3	105-4653	2	Hub-Mounting,brake
4	32151-56	2	Ring-Retaining, External
5	32151-72	4	Ring-Retaining
6	32128-40	2	Nut-Flange
7	3256-4	4	Washer-Flat
8	323-9	2	Screw-HH
12	105-4661	2	Decal-Service, Brake
13	1-806800	2	Pin-Cotter
18	106-5537-01	2	Brake Arm ASM

PROTOTYPE