



## Hydraulic Cylinder Kit Groundsmaster® 455-D

Model No. 106-1097

### Parts Catalog

---

#### Ordering Replacement Parts

To order replacement parts, please supply: the part number, the quantity, and the description of each part desired.

#### Understanding Reference Numbers

Each identified part in an illustration has a reference number. The reference number for a part also appears in the parts list, along with other information about the part.

This catalog uses two special reference number formats, one to indicate parts in a service assembly and another to indicate the quantity of a given part in an illustration.

#### Service Assembly Reference Numbers

Parts in service assemblies have reference numbers in the form **a:b**. The **a** represents the reference number of the entire service assembly and the **b** represents a sequential number unique to each part within the service assembly.

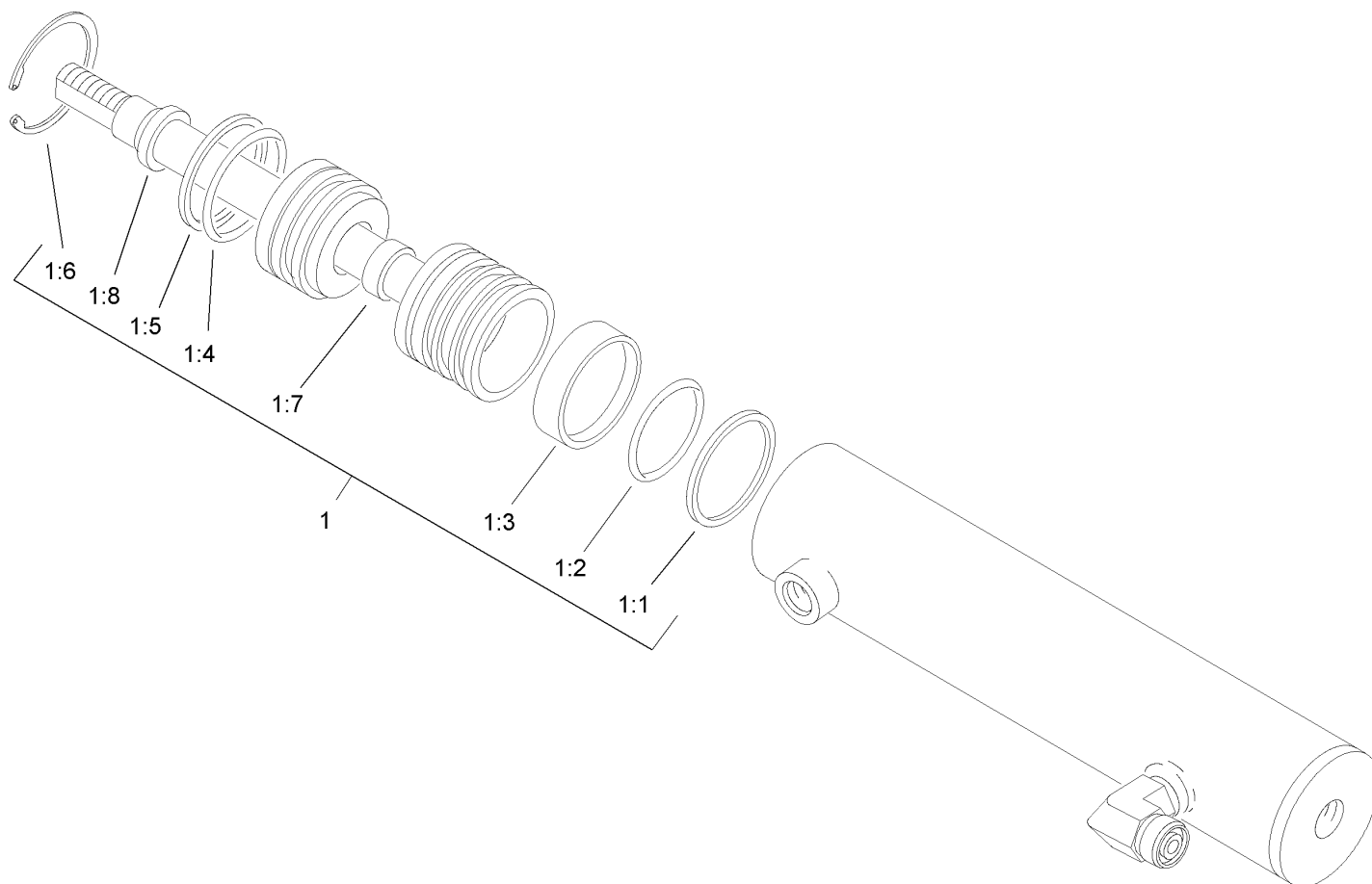
For example, a wheel assembly might be identified by reference number 6, the tire by **6:1**, the valve by **6:2**, and the wheel by **6:3**. When you order the assembly identified by reference number 6, you receive all parts identified by reference numbers 6:1, 6:2, and 6:3. However, you may also order any part individually. Reference numbers of this type appear in illustrations and in part lists.

#### Reference Numbers Indicating Quantity

In an illustration, if a reference number indicates more than one part, the reference number has the form **nX y**. The **n** represents the quantity of the part, the **X** is the multiplication symbol, and the **y** represents the reference number.

For example, in an illustration, the reference number **2X 37** means that two of the parts identified by reference number 37 are indicated.





## Hydraulic Cylinder Assembly 106-1095

Ref	Part No.	Qty.	Description				
1	106-1096	1	Seal Kit				
1:1		1	Ring-Piston (Not Serviced Separately)				
1:2		1	O-Ring (Not Serviced Separately)				
1:3		1	Ring-Wear (Not Serviced Separately)				
1:4		1	O-Ring (Not Serviced Separately)				
1:5		1	Ring-Back Up (Not Serviced Separately)				
1:6		1	Ring-Snap (Not Serviced Separately)				
1:7		1	U-Cup (Not Serviced Separately)				
1:8		1	Wiper-Rod (Not Serviced Separately)				

