



# Two-Bearing Conversion Kit DFS Bagger for 200 Series Z Master®

Model No. 107-7652

## Parts Catalog

### Ordering Replacement Parts

To order replacement parts, please supply the part number, the quantity, and the description of each part desired.

### Understanding Reference Numbers

Each identified part in an illustration has a reference number. The reference number for a part also appears in the parts list, along with other information about the part.

This catalog uses two special reference number formats, one to indicate parts in a service assembly and another to indicate the quantity of a given part in an illustration.

### Service Assembly Reference Numbers

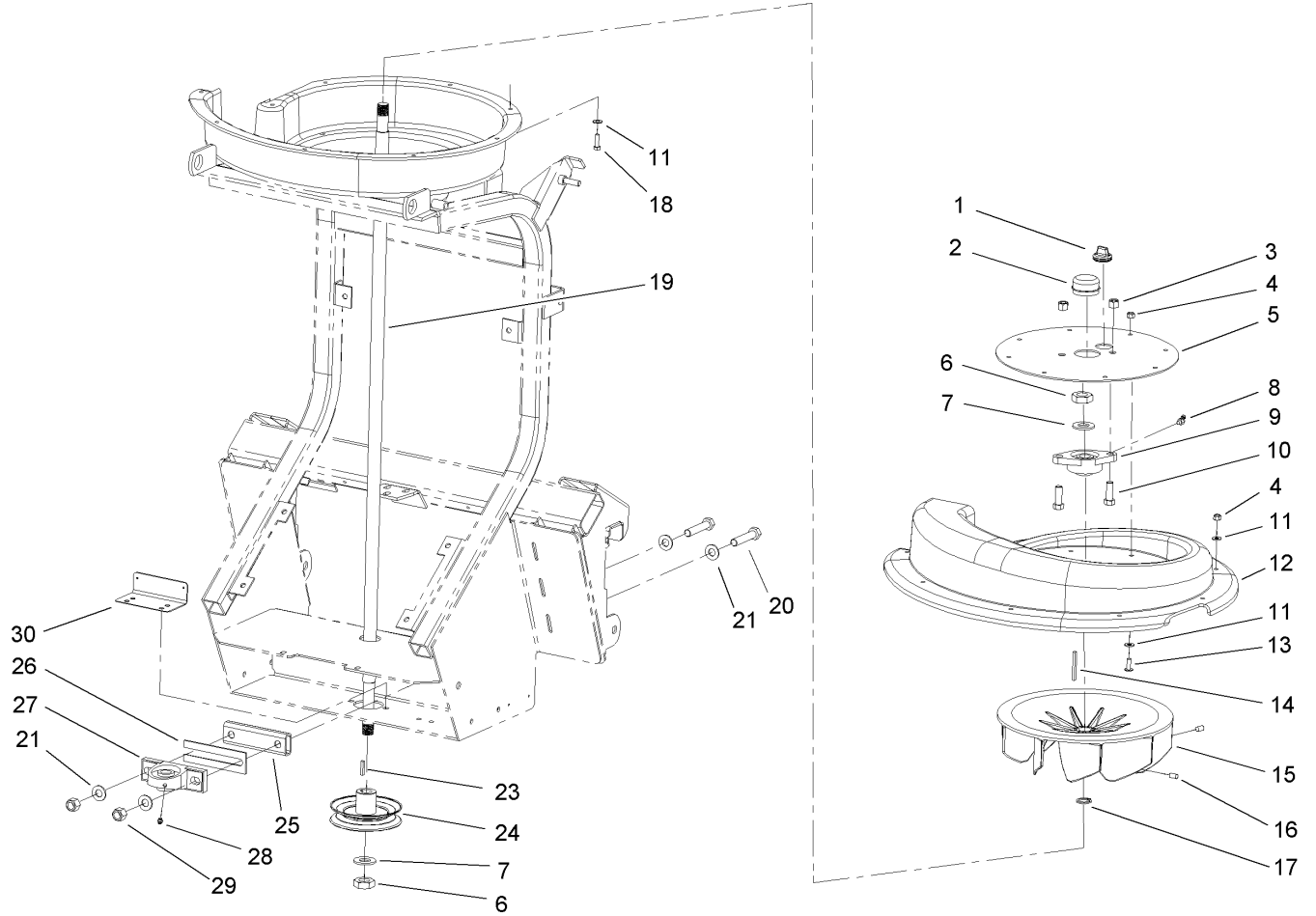
Parts in service assemblies have reference numbers in the form a:b. The a represents the reference number of the entire service assembly and the b represents a sequential number unique to each part within the service assembly.

For example, a wheel assembly might be identified by reference number 6, the tire by 6:1, the valve by 6:2, and the wheel by 6:3. When you order the assembly identified by reference number 6, you receive all parts identified by reference numbers 6:1, 6:2, and 6:3. However, you may also order any part individually. Reference numbers of this type appear in illustrations and in part lists.

### Reference Numbers Indicating Quantity

In an illustration, if a reference number indicates more than one part, the reference number has the form nX y. The n represents the quantity of the part, the X is the multiplication symbol, and the y represents the reference number.

For example, in an illustration, the reference number 2X 37 means that two of the parts identified by reference number 37 are indicated.



## Two-Bearing Conversion Kit Assembly

Ref	Part No.	Qty.	Description
1	105-2438	1	Plug
2	106-7147	1	Cap-Grease
3	3296-48	2	Nut-Lock, NI
4	3296-42	17	Nut-Lock, NI
5	106-7128-03	1	Cover-Scroll
6	32146-20	2	Nut-Jam
7	7-4150	2	Washer
8	302-11	1	Fitting-Lube, 45 DEG
9	106-7126	1	Bearing-Flange
10	324-5	2	Screw-HH
11	3256-22	26	Washer-Flat
12	106-8950	1	Scroll-Top
13	9114604	8	Screw-Truss Head
14	105-9716	1	Key-Square
15	106-8951	1	Fan-Balancing
16	3246-4	2	Screw-Set
17	32151-33	1	Ring-Retaining, Ext
18	321-5	9	Screw-HH
19	106-7149	1	Shaft-Fan
20	325-10	2	Screw-HH
21	3256-26	4	Washer-Flat
23	5-1077	1	Key-Square
24	106-8976	1	Pulley-V
25	107-7653-03	1	Spacer

Ref	Part No.	Qty.	Description
26	106-8964-03	3	Spacer-Bearing (Use As Required To Tension Belt.)
27	106-7119	1	Bearing
28	302-55	1	Fitting-Grease
29	3296-23	2	Nut-Lock, NI
30	107-7654	1	Template, Base Frame

PROTOTYPE