



Count on it.

Form No. 3478-479 Rev A

Operator's Manual

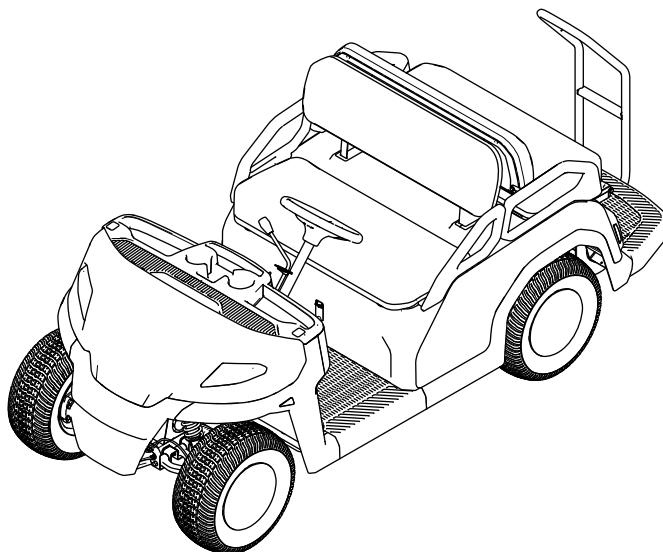
Vista® EFI Shuttle Vehicle

Model No. 08914—Serial No. 400000000 and Up

Model No. 08914TC—Serial No. 400000000 and Up

Model No. 08916—Serial No. 400000000 and Up

Model No. 08918—Serial No. 400000000 and Up



This product complies with all relevant European directives; for details, please see the separate product specific Declaration of Conformity (DOC) sheet.

It is a violation of California Public Resource Code Section 4442 or 4443 to use or operate the engine on any forest-covered, brush-covered, or grass-covered land unless the engine is equipped with a spark arrester, as defined in Section 4442, maintained in effective working order or the engine is constructed, equipped, and maintained for the prevention of fire.

The enclosed engine owner's manual is supplied for information regarding the US Environmental Protection Agency (EPA) and the California Emission Control Regulation of emission systems, maintenance, and warranty. Replacements may be ordered through the engine manufacturer.

⚠ **WARNING**

CALIFORNIA
Proposition 65 Warning

The engine exhaust from this product contains chemicals known to the State of California to cause cancer, birth defects, or other reproductive harm.

Battery posts, terminals, and related accessories contain lead and lead compounds, chemicals known to the State of California to cause cancer and reproductive harm. Wash hands after handling.

Introduction

This vehicle is intended to be used by hired, commercial operators primarily off-highway to transport people. Using this product for purposes other than its intended use could prove dangerous to you, your passengers, and bystanders.

Read this information carefully to learn how to operate and maintain your product properly and to avoid injury and product damage. You are responsible for operating the product properly and safely.

Visit www.Toro.com for product safety and operation training materials, accessory information, help finding a dealer, or to register your product.

Whenever you need service, genuine Toro parts, or additional information, contact an Authorized Service Distributor or Toro Customer Service and have the

model and serial numbers of your product ready. **Figure 1** identifies the location of the model and serial numbers on the product. Write the numbers in the space provided.

Important: With your mobile device, you can scan the QR code on the serial number decal (if equipped) to access warranty, parts, and other product information.

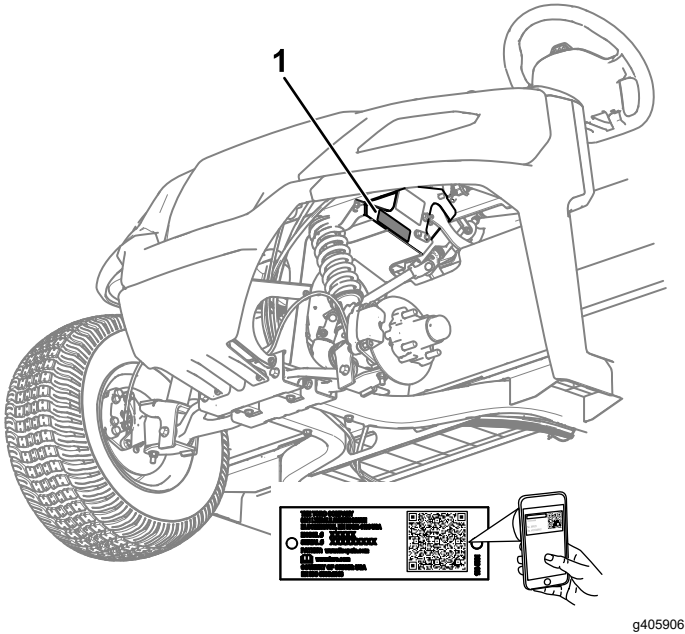


Figure 1

1. Model and serial number location

Model No. _____

Serial No. _____

This manual uses 2 words to highlight information. **Important** calls attention to special mechanical information and **Note** emphasizes general information worthy of special attention.

The safety-alert symbol (Figure 2) appears both in this manual and on the machine to identify important safety messages that you must follow to avoid accidents. This symbol will appear with the word **Danger**, **Warning**, or **Caution**.

- **Danger** indicates an imminently hazardous situation which, if not avoided, **will** result in death or serious injury.
- **Warning** indicates a potentially hazardous situation which, if not avoided, **could** result in death or serious injury.
- **Caution** indicates a potentially hazardous situation which, if not avoided, **may** result in minor or moderate injury.



Figure 2
Safety-alert symbol

g000502

Contents

Safety	4
General Safety	4
Safety and Instructional Decals	5
Setup	7
1 Installing the Steering Wheel.....	7
2 Connecting the Battery	8
3 Checking the Fluid Levels and Tire Pressure	8
4 Burnishing the Brakes.....	8
Product Overview	9
Controls	9
Display	11
Specifications	14
Attachments/Accessories	14
Before Operation	15
Before Operation Safety	15
Performing Daily Maintenance.....	16
Checking the Tire Pressure.....	16
Adding Fuel	17
Breaking in a New Machine	17
During Operation	18
During Operation Safety	18
Starting the Engine	20
Stopping the Machine	20
Parking the Machine	20
After Operation	21
After Operation Safety	21
Hauling the Machine	21
Towing the Machine	21
Maintenance	22
Maintenance Safety.....	22
Battery Safety.....	23
Recommended Maintenance Schedule(s)	23
Daily Maintenance Checklist.....	25
Maintaining the Machine under Special Operating Conditions	26
Pre-Maintenance Procedures	26
Preparing the Machine for Maintenance.....	26
Removing the Seat Assembly	26
Installing the Seat Assembly	27
Removing the Hood	27
Installing the Hood	28
Lifting the Machine	29
Lubrication	29
Greasing the Front Wheel Bearings	29
Engine Maintenance	32
Engine Safety	32
Servicing the Air Cleaner	32
Servicing the Engine Oil.....	34
Servicing the Spark Plug.....	35
Fuel System Maintenance	36
Checking the Fuel Lines and Connections.....	36
Replacing the Fuel Filters	36
Servicing the Carbon Canister	37
Electrical System Maintenance	37

Safety

General Safety

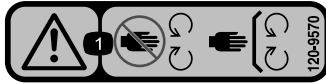
- This product is capable of causing personal injury or death. Always follow all safety instructions to avoid serious personal injury.
- Improper operation, maintenance, or poor housekeeping of the machine may cause it to become unstable; other factors include terrain conditions, slope, speed, and poor operator judgment.
- Read and understand the contents of this *Operator's Manual* before you start the machine. Ensure that everyone using this product knows how to use it and understands the warnings.
- Use your full attention while operating the machine. Do not engage in any activity that causes distractions; otherwise, injury or property damage may occur.
- Do not put your hands or feet near moving components of the machine.
- Do not operate the machine without all guards and other safety protective devices in place and in good working order.
- Keep bystanders and children out of the operating area. Never allow children to operate the machine.
- Stop and shut off the machine and remove the key before servicing or fueling.
- Improperly using or maintaining this machine can result in injury. To reduce the potential for injury, comply with these safety instructions and always pay attention to the safety-alert symbol ▲, which means Caution, Warning, or Danger—personal safety instruction. Failure to comply with these instructions may result in personal injury or death.

Servicing the Battery.....	37
Replacing the Headlight.....	40
Locating the Fuses	40
Drive System Maintenance	41
Maintaining the Tires	41
Inspecting the Steering and Suspension Components	41
Adjusting the Wheel Alignment	41
Checking the Transaxle-Fluid Level	42
Changing the Transaxle Fluid	43
Checking the Neutral Gear-Shift Position	43
Adjusting the Neutral Gear-Shift Position	43
Maintaining the Primary Drive Clutch	44
Reducing the Top Speed.....	44
Brake Maintenance	45
Adjusting the Parking Brake.....	45
Checking the Brake-Fluid Level	46
Checking the Brakes.....	46
Replacing the Service and Parking-Brake Pads.....	47
Changing the Brake Fluid	47
Belt Maintenance	47
Servicing the Drive Belt.....	47
Adjusting the Starter-Generator Belt	48
Cleaning	49
Washing the Machine	49
Storage	49
Storage Safety.....	49
Storing the Machine.....	49

Safety and Instructional Decals



Safety decals and instructions are easily visible to the operator and are located near any area of potential danger. Replace any decal that is damaged or missing.



120-9570

decal120-9570

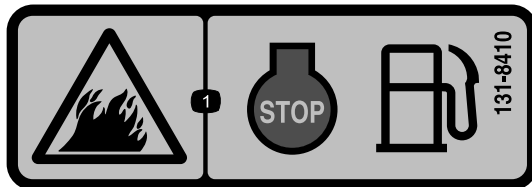
1. Warning—stay away from moving parts, keep all guards and shields in place.



127-3866

decal127-3866

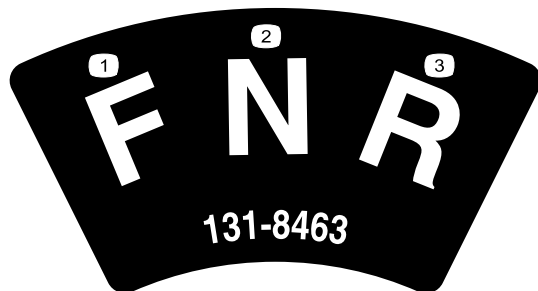
1. Warning—keep away from hot surfaces.



131-8410

decal131-8410

1. Fire hazard—shut off the engine before fueling.



131-8463

decal131-8463

1. Forward
2. Neutral
3. Reverse

For Models 08916 and 08918 only:



decal140-0920

140-0920

1. Warning—do not operate the machine while under the influence of alcohol or drugs.
2. Falling hazard; dismemberment hazard—passengers should sit in the designated seating positions only; keep all limbs inside the vehicle.

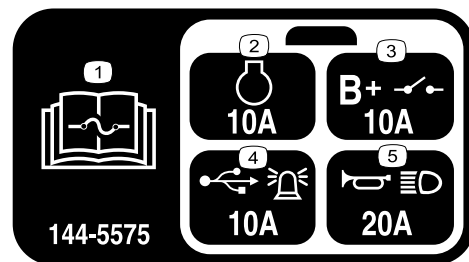
For Models 08914 and 08914TC only:



decal144-5574

144-5574










1. Warning—do not operate the machine while under the influence of alcohol or drugs.
2. Falling hazard; dismemberment hazard—do not carry more than 4 occupants; occupants should sit in the designated seating positions only; keep all limbs inside the vehicle.



decal144-5575

144-5575

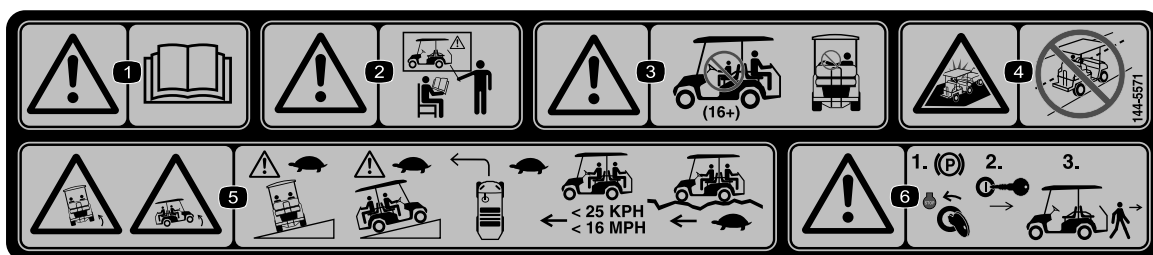
1. Refer to the *Operator's Manual* for fuse information.
2. Engine
3. Main system B+
4. USB plug and beacon
5. Horn and headlights

VISTA EFI  144-5579	
 2	145-7199
 3	145-7282 (10 MICRON), 145-7283 (30 MICRON)
 4	147-3473
 5	0.030" (0.76mm)
 6	1.0 qt (0.94 L) <small>SAE 10W-30 > -20°C (-4°F) SAE 5W-30 < 0°C (32°F)</small>
 7	0.75 qt (0.71 L) MOBIL 424
 8	DOT 3
 9	205 x 65-10, 6 PLY, 20 psi

decal144-5579

144-5579

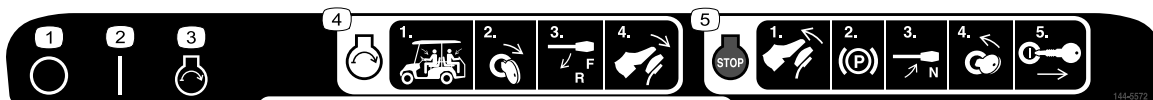
1. Read the *Operator's Manual* before performing maintenance.
2. Engine air filter
3. Fuel filter
4. Spark plug
5. Spark-plug gap
6. Engine oil
7. Transmission fluid
8. Brake fluid
9. Tire pressure



decal144-5571

144-5571

1. Warning—read the *Operator's Manual*.
2. Warning—receive proper training before operating the machine.
3. Warning—never allow children to operate the machine; only operate the machine while sitting in the operator's position.
4. Collision hazard—do not operate the machine on public roads.
5. Tipping hazard—drive slowly across or up slopes; take turns slowly; do not exceed speeds of 25 kph (16 mph); drive slowly when carrying passengers; drive slowly on uneven terrain
6. Warning—Engage the parking brake, turn the key to the OFF position, and remove the key before leaving the operator's position.



decal144-5572

144-5572

1. Off
2. On
3. Engine—start
4. To start the engine—1) Sit in the operator's position and have all passengers sit in the designated seating positions; 2) Turn the key to the engine START position; 3) Move the gear-shift selector to the desired direction of travel; 4) Press down on the pedal.
5. To shut of the engine—1) Release the pedal; 2) Engage the parking brake; 3) Move the gear-shift selector to the NEUTRAL position; Turn the key to the OFF position; 4) Remove the key.

Setup

Loose Parts

Use the chart below to verify that all parts have been shipped.

Procedure	Description	Qty.	Use
1	Steering wheel Screw Spring Wheel cover Wheel clip	1 5 2 1 1	Install the steering wheel (4-passenger crated model only).
2	No parts required	–	Connect the battery (4-passenger crated model only).
3	No parts required	–	Check the fluid levels and tire pressure.
4	No parts required	–	Burnish (break-in) the brakes.

1

Installing the Steering Wheel

4-Passenger Crated Model Only

Parts needed for this procedure:

1	Steering wheel
5	Screw
2	Spring
1	Wheel cover
1	Wheel clip

Procedure

Refer to [Figure 3](#) for this procedure.

1. Place the steering wheel on the steering shaft.
Ensure that the steering wheel is centered (i.e., the flat bottom should be parallel with the ground).
2. Use the locknut to secure the steering wheel to the steering shaft.
3. Torque the locknut to 27 N·m (20 ft-lb).
4. Use 2 screws and 2 springs to secure the wheel clip to the wheel cover.
5. Use 3 screws to secure the wheel cover to the steering wheel.
6. Torque the 5 screws to 0.6 N·m (5 in-lb).

3

Checking the Fluid Levels and Tire Pressure

No Parts Required

Procedure

1. Check the engine-oil level before and after you first start the engine; refer to [Checking the Engine-Oil Level \(page 34\)](#).
2. Check the brake-fluid level before you first start the engine; refer to [Checking the Brake-Fluid Level \(page 46\)](#).
3. Check the transaxle-fluid level before you first start the engine; refer to [Checking the Transaxle-Fluid Level \(page 42\)](#).
4. Check the air pressure in the tires; refer to [Checking the Tire Pressure \(page 16\)](#).

4

Burnishing the Brakes

No Parts Required

Procedure

To ensure optimum performance of the brake system, burnish (break-in) the brakes before use.

1. Bring the machine up to full speed, apply the brakes to rapidly stop the machine without locking up the tires.
2. Repeat this procedure 10 times, waiting 1 minute between stops, to avoid overheating the brakes.

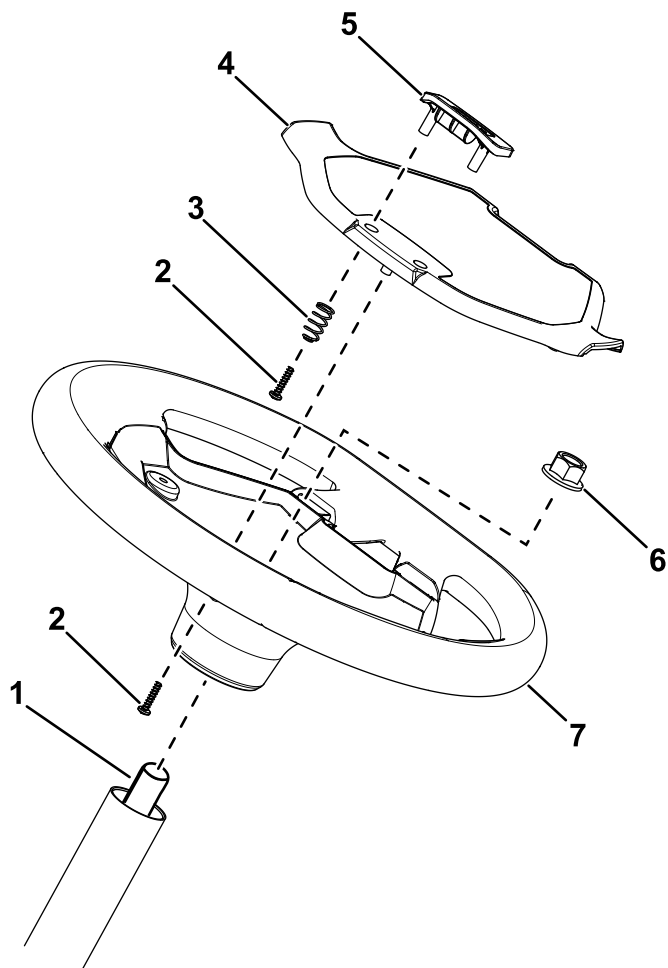


Figure 3

g410793

- | | |
|-------------------|-------------------|
| 1. Steering shaft | 5. Wheel clip |
| 2. Screw | 6. Locknut |
| 3. Spring | 7. Steering wheel |
| 4. Wheel cover | |

2

Connecting the Battery

4-Passenger Crated Model Only

No Parts Required

Procedure

Connect the battery; refer to [Connecting the Battery \(page 39\)](#).

Product Overview

Controls

Become familiar with all the controls before you start the engine and operate the machine.

Control Panel

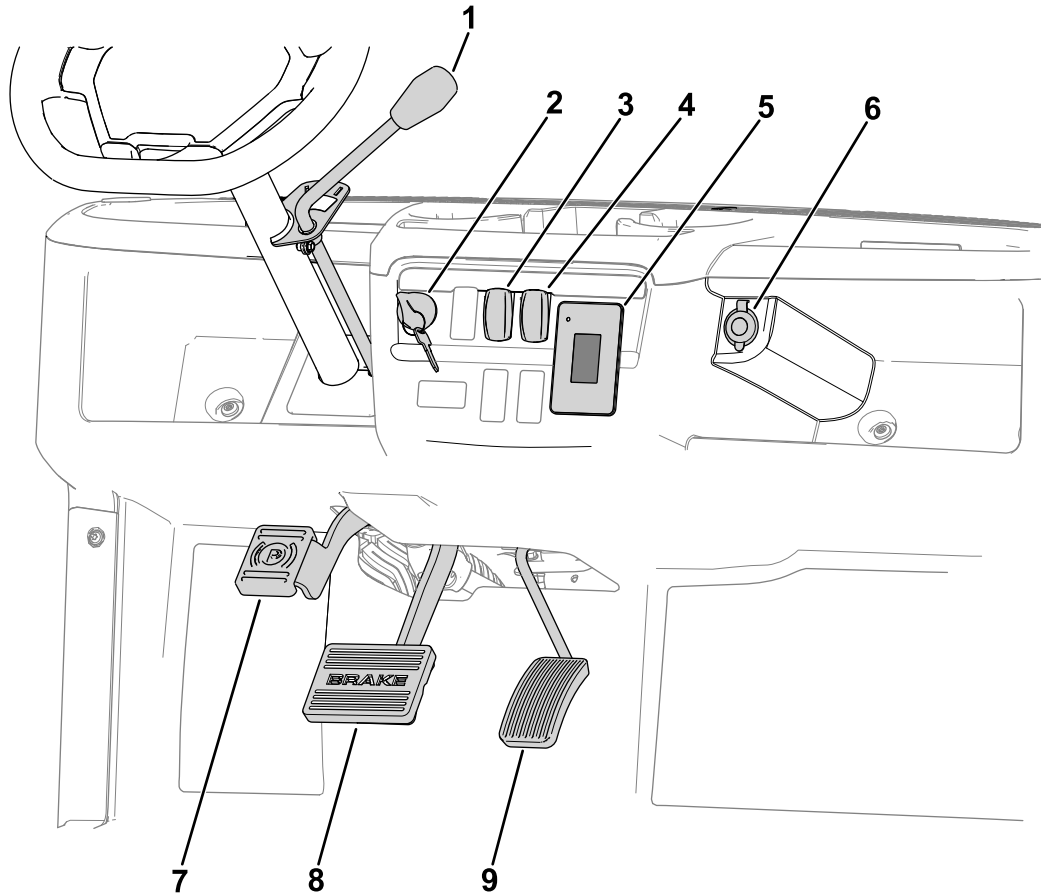


Figure 4

- | | |
|---------------------|------------------------|
| 1. Gear-shift lever | 6. USB port |
| 2. Key switch | 7. Parking-brake pedal |
| 3. Light switch | 8. Brake pedal |
| 4. Horn switch | 9. Accelerator pedal |
| 5. Display | |

g405102

Accelerator Pedal

Use the accelerator pedal to vary the ground speed of the machine. Pressing down the accelerator pedal starts the engine. Pressing the pedal farther increases the ground speed. Releasing the pedal slows the machine, and the engine shuts off.

Note: The forward speed is 26 km/h (16 mph).

Brake Pedal

Use the brake pedal to stop or slow the machine.

⚠ WARNING

Operating a machine with worn or incorrectly adjusted brakes can may result in personal injury.

If the brake pedal travels within 25 mm (1 inch) of the machine floor board, adjust or repair the brakes.

Parking-Brake Pedal

Push down the pedal to engage the parking brake.

The parking brake disengages when you push the accelerator pedal.

Key Switch

The key switch has 3 positions: OFF, ON, and START.

Horn Switch

Press the horn switch to sound the horn.

Gear-Shift Lever and Gear-Shift Indicator

The gear-shift lever can be set to 3 positions on the gear-shift indicator (Figure 5): FORWARD, REVERSE, and NEUTRAL.

Note: The engine starts and runs in any of the 3 positions.

From the NEUTRAL position, you can move the gear-shift lever left to the FORWARD position or right to the REVERSE position (Figure 5).

Important: Always stop the machine before changing gears.

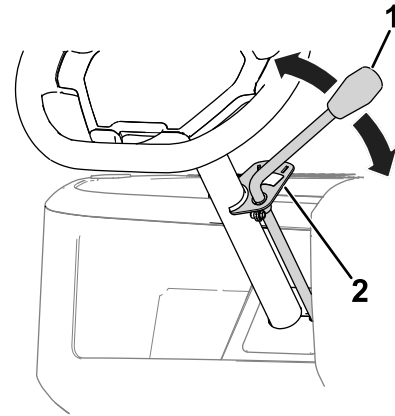


Figure 5

g408502

1. Gear-shift lever

2. Gear-shift indicator

Light Switch

Use the light switch to illuminate the headlights. Push the light switch up to turn on the headlights. Push the light switch down to turn off the lights.

USB Port

Use the USB port to power mobile devices.

Important: When you are not using the USB port, insert the rubber plug to prevent damage to the port.

Display

The display shows information about your machine, such as the operating status, various diagnostics, and other information about the machine (Figure 6).

Normally, the indicator light illuminates **solid** green.

If there are one or more active faults, the indicator light **blinks** red.

If there is an advisory, the indicator light illuminates **solid** red.

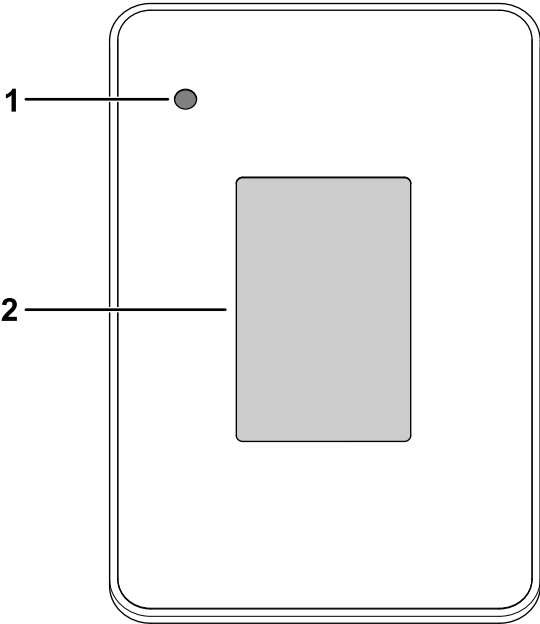


Figure 6

g320256

1. Indicator light
2. Display

There is a startup screen and run screen on the display (Figure 7 and Figure 8).

Figure 8 shows what you may see on the display when you run the machine. The startup screen displays for a few seconds after you turn the key to the ON position, then the run screen displays.



Figure 7
Startup screen

g413507

1. Software revision

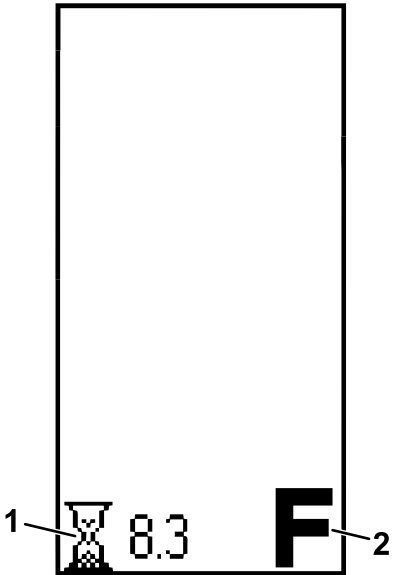


Figure 8
Run screen

g413603

1. Hours operated
2. Direction

The run screen with the direction position (Figure 9) appears when you change directions.

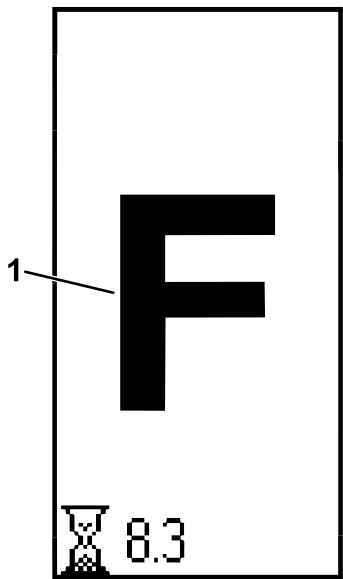


Figure 9

g413604

1. FORWARD position

An active fault code (Figure 11) appears on the display if there is an issue with the machine.

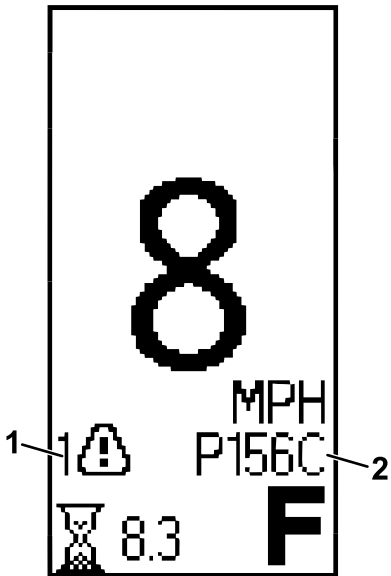


Figure 11

g413606

1. Active fault indicator 2. Fault code

The run screen with the current machine speed (Figure 10) appears when you are driving the machine.

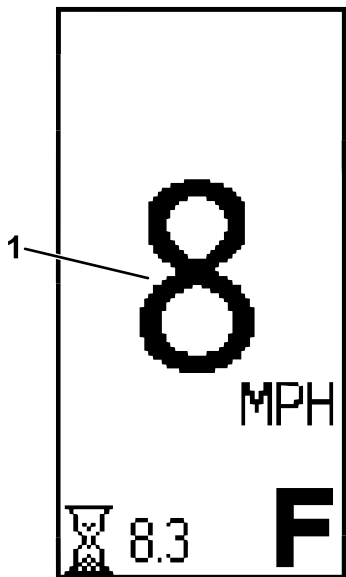




Figure 10

g413605

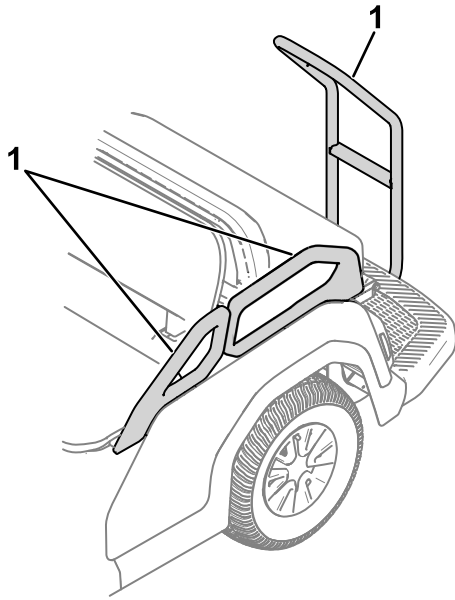
1. Current machine speed

Icon Descriptions

F	Direction—FORWARD position
N	Direction—NEUTRAL position
R	Direction—REVERSE position
	Hour meter
	Active fault

Passenger Handholds

The passenger handholds are located on the outside of each seat and at the rear of the machine ([Figure 12](#)).



g408491

Figure 12

1. Passenger handhold
-

Specifications

Note: Specifications and design are subject to change without notice.

Base weight	4-passenger model: 398 kg (880 lb), including the Canopy Kit
	6-passenger model: 417 kg (920 lb)
	8-passenger model: 482 kg (1,065 lb)
Rated capacity (on level ground)	4-passenger model: 463 kg (1,020 lb) total, including 90.7 kg (200 lb) operator and 91 kg (200 lb) for each passenger, load, accessories, and attachments
	6-passenger model: 694 kg (1,530 lb) total, including 90.7 kg (200 lb) operator and 91 kg (200 lb) for each passenger, load, accessories, and attachments
	8-passenger model: 878 kg (1,935 lb) total, including 90.7 kg (200 lb) operator and 91 kg (200 lb) for each passenger, load, accessories, and attachments
Gross vehicle weight (GVW)—on level ground	4-passenger model: 861 kg (1,900 lb)
	6-passenger model: 1,111 kg (2,450 lb)
	8-passenger model: 1,360 kg (3,000 lb)
Overall width	112 cm (44 inches)
Overall length	4-passenger model: 277 cm (109 inches)
	6-passenger model: 357 cm (140.5 inches)
	8-passenger model: (172.0 inches)
Overall height	Top of steering wheel: 121 cm (47.5 inches)
	Top of canopy: 188 cm (73.9 inches)
Ground clearance	21.6 cm (8.5 inches) at the front with no operator
	15.7 cm (6.2 inches) at the rear with no operator
Wheel base	4-passenger model: 166 cm (65.5 inches)
	6-passenger model: 246 cm (97 inches)
	8-passenger model: 326 cm (128.5 inches)
Wheel tread (center line to center line)	Front: 90 cm (35.4 inches)
	Rear: 90 cm (35.4 inches)
Engine speed	Low idle: 1,150 rpm
	High idle: 3,400 rpm

Attachments/Accessories

A selection of Toro approved attachments and accessories is available for use with the machine to enhance and expand its capabilities. Contact your Authorized Service Dealer or authorized Toro distributor or go to www.Toro.com for a list of all approved attachments and accessories.

To ensure optimum performance and continued safety certification of the machine, use only genuine Toro replacement parts and accessories. Replacement parts and accessories made by other manufacturers could be dangerous, and such use could void the product warranty.

Operation

Note: Determine the left and right sides of the machine from the normal operating position.

Before Operation

Before Operation Safety

General Safety

- Never allow children or people who are not trained or do not have the visual, auditory, physical, and mental ability to safely operate or service the machine. Local regulations may restrict the age of the operator and require proof of insurance.
- The owner is responsible for training all operators and mechanics. Operators of the machine should complete an operator's training program regardless of previous experience operating vehicles.
- The operator's training program should include the *Operator's Manual* and emphasize the safety of the operator, passengers, and bystanders; general safety rules; an overview of the equipment, controls, and functions, and how they work when used properly and improperly; surface conditions, slope, and other conditions that could affect the operation of the machine; and an evaluation of operator competency.
- Become familiar with the safe operation of the equipment, operator controls, and safety signs.
- Shut off the machine, engage the parking brake, remove the key, and wait for all movement to stop before you leave the operator's position.
- Allow the machine to cool before adjusting, servicing, cleaning, or storing it.
- Know how to stop and shut off the machine quickly.
- Check that all safety devices and decals are in place. Repair or replace all safety devices and replace all illegible or missing decals. Do not operate the machine unless they are present and functioning properly.
- Inspect the machine periodically to ensure that the safety-interlock system (if equipped) is operating properly.
- Assess the area where you will use the machine and identify areas where you should not operate it and any hazards to avoid. Train operators to comply with any additional safety practices.
- Use care when operating the machine where there are pedestrians, bicycles, or motor vehicles, whenever possible. When operating the machine with other vehicles or pedestrians around, you may

use mirrors, barriers, lighting, or other measures in these areas.

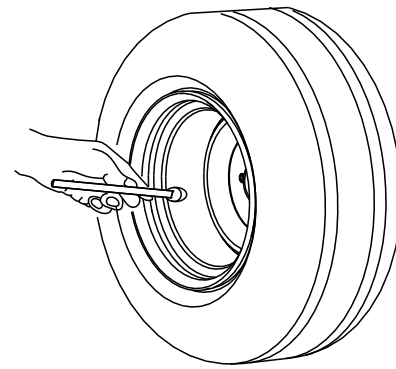
- It is the owner's responsibility to survey the environment and operating conditions to determine whether the machine requires lights, and if so, to equip the machine with appropriate lights.
- The owner is responsible for determining if the operating conditions require the machine to have additional sound-producing and/or visual devices and for providing and maintaining such devices according to the manufacturer's recommendations.
- At the beginning of each shift using the machine, check the condition of the machine, inspecting the tires, warning devices, lights, battery, speed and directional controllers, brakes, safety interlocks, and steering mechanism. If the machine needs repair or is unsafe in any way, report it immediately to the owner and do not operate the machine until it is in a safe operating condition.

Fuel Safety

- Use extreme care in handling fuel. It is flammable and its vapors are explosive.
- Extinguish all cigarettes, cigars, pipes, and other sources of ignition.
- Do not remove the fuel cap or fill the fuel tank while the engine is running or hot.
- Do not add or drain fuel in an enclosed space.
- Do not store the machine or fuel container where there is an open flame, spark, or pilot light, such as on a water heater or other appliance.
- Before fueling the machine, shut off the engine and allow it to cool. Have the operator and passengers leave the machine before fueling it.
- If you spill fuel, do not attempt to start the engine; avoid creating any source of ignition until the fuel vapors have dissipated.
- The owner is responsible for storing and handling liquefied fuels in accordance with ANSI/NFPA 30. Store and handle fuel in accordance with ANSI/NFPA 505 and ANSI/NFPA 30 or as required by local ordinances.
- Contain fuel spills immediately and according to the appropriate regulations.
- Ventilate maintenance and storage areas according to local fire codes and ordinances to avoid a fire hazard.
- Prevent fire and an explosion caused by static electric discharge. Use only non-metal, portable fuel containers approved by the Underwriter's Laboratory (UL) or the American Society for Testing and Materials (ASTM). Use only a funnel that is plastic and has no screen or filter. Store

and handle fuel in accordance with ANSI/NFPA 505 and ANSI/NFPA 30 or as required by local ordinances.

- Static electric discharge can ignite gasoline vapors in an ungrounded fuel container. Remove the fuel container from the machine and place it on the ground, away from the machine before filling. Keep the nozzle in contact with container opening while filling. When practical, remove equipment from trailers or truck beds and refuel them on the ground. If this is not possible, use a portable, plastic fuel container to refuel equipment on a truck bed or trailer.
- Do not use open flames for checking the electrolyte level in the battery or the fuel level in the tank.
- Do not operate the machine with a leak in the fuel system.
- Before disconnecting any part of the engine fuel system, ensure that the fuel-shutoff valve (if equipped) is closed.



G001055

g001055

Figure 13

Performing Daily Maintenance

Before starting the machine each day, perform the Each Use/Daily procedures listed in [Daily Maintenance Checklist \(page 25\)](#).

Checking the Tire Pressure

Service Interval: Before each use or daily

Front and rear tires air pressure specification: 138 kPa (20 psi)

Important: Do not exceed the maximum air pressure indicated on the sidewall of the tire.

Note: The air pressure needed in the tires is determined by the payload that you intend to carry.

1. Check the air pressure in the tires.
 - Use lower air pressure in the tires for lighter payloads, for less soil compaction, for a smoother ride, and to minimize tire marks on the ground.
 - Use higher air pressure in the tires for carrying heavier payloads at higher speeds.
2. If necessary, adjust the air pressure in the tires by adding or removing air in the tires.

Adding Fuel

Recommended Fuel

Type	Unleaded gasoline
Minimum octane rating	87 (US) or 91 (research octane; outside the US)
Ethanol	No more than 10% by volume
Methanol	None
MTBE (methyl tertiary butyl ether)	Less than 15% by volume
Oil	Do not add to the fuel

Use only clean, fresh (no more than 30 days old), fuel from a reputable source.

Important: To reduce starting problems, add fuel stabilizer/conditioner to fresh fuel as directed by the fuel-stabilizer/conditioner manufacturer.

Refer to your engine owner's manual for additional information.

Filling the Fuel Tank

The fuel-tank capacity is approximately 18.9 L (5 US gallons).

1. Park the machine on a level surface.
2. Shift the transmission to the NEUTRAL position.
3. Engage the parking brake.
4. Shut off the machine and remove the key.
5. Clean the area around the fuel-tank cap (Figure 14).

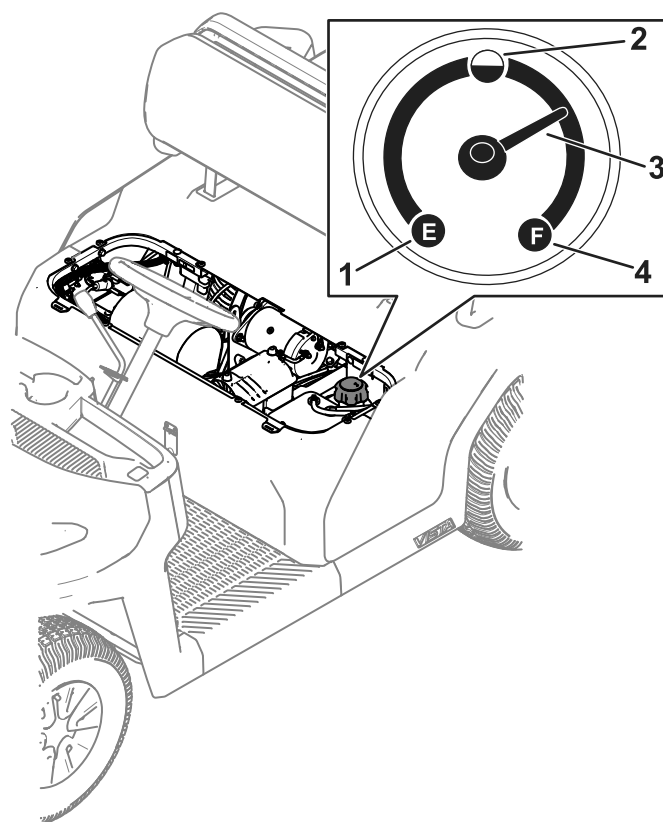


Figure 14

g407208

1. Empty
2. Half full
3. Needle
4. Full

6. Remove the fuel-tank cap.
7. Fill the tank to about 25 mm (1 inch) below the top of tank (bottom of the filler neck).

Note: This space in the tank allows fuel to expand. **Do not overfill the fuel tank.**

8. Install the fuel-tank cap securely.
9. Wipe up any spilled fuel.

Breaking in a New Machine

Service Interval: After the first 100 hours—Perform the guidelines for breaking in a new machine.

Perform the following guidelines to provide proper performance for the machine.

- Ensure that the brakes are burnished; refer to the burnishing section in Setup.
- Check the fluid and engine-oil levels regularly. Remain alert for signs that the machine or its components are overheating.
- After starting a cold engine, let it warm up for about 15 seconds before using the machine.

Note: Allow more time for the engine to warm up when operating in cold temperatures.

- Vary the machine speed during operation. Avoid fast starts and quick stops.
- A break-in oil for the engine is not required. Original engine oil is the same type specified for regular oil changes.
- Refer to [Maintenance \(page 22\)](#) for any special, low-hour checks.
- Check the front suspension positioning and adjust it, if necessary; refer to [Adjusting the Wheel Alignment \(page 41\)](#).

During Operation

During Operation Safety

General Safety

- The owner/operator can prevent and is responsible for accidents that may cause personal injury or property damage.
- Report all accidents with the machine to the owner.
- Keep bystanders and children out of the operating area.
- Passengers should sit in the designated seating positions only. Keep arms and legs within the machine body at all times.
- The operator should wear substantial, slip-resistant footwear.
- Use your full attention while operating the machine. Do not engage in any activity that causes distractions; otherwise, injury or property damage may occur.
- Do not operate the machine while ill, tired, or under the influence of alcohol or drugs.
- Operate the machine outdoors or in a well-ventilated area only.
- Before you start the machine, ensure that the transmission is in neutral, the parking brake is engaged, and you are in the operating position.
- You and your passengers should remain seated whenever the machine is moving. Keep your hands on the steering wheel; your passengers should use the handholds provided.
- Do not exceed the maximum gross vehicle weight (GVW) of the machine.
- Carrying oversized loads in the cargo bed reduces the stability of the machine. Do not exceed the carrying capacity of the bed.
- Operate the machine only in good visibility. Watch for holes, ruts, bumps, rocks, and loose or hidden objects. Reduce the ground speed of the machine when operating on rough, uneven terrain, and near curbs, holes, and other sudden changes in terrain that could overturn the machine. Tall grass can hide obstacles. Use care when approaching blind corners, shrubs, trees, or other objects that may obscure your vision.
- Identify sharp turns, blind spots, bridge approaches, and other potentially hazardous areas, and post a warning to the operator of the nature of the hazard(s) and the proper precautions to take to avoid the hazard(s).
- Do not drive the machine near drop-offs, ditches, or embankments. The machine could suddenly roll over if a wheel goes over the edge or if the edge gives way.
- Keep away from potential hazards, such as edges of ramps and platforms.
- Always watch out for and avoid low overhangs such as tree limbs, door jambs, overhead walkways, etc.
- Look behind you before reversing the machine to be sure of a clear path.
- When using the machine on public roads, follow all traffic regulations and use any additional accessories that may be required by law, such as lights, turn signals, slow-moving vehicle (SMV) signs, and others as required.
- It can take longer to stop the machine on wet surfaces than on dry surfaces. To dry out wet brakes, drive slowly on a level surface while putting light pressure on the brake pedal.
- Use extreme caution and slow down when driving the machine in wet or icy areas or on loose terrain could result in reduced traction, steering, stability, and braking. Repair areas of loose terrain, if possible, or close off the area and post a warning to prevent others from operating the machine on those areas.
- Operating the machine at high speed and then quickly stopping may cause the rear wheels to lock up, which impairs your control of the machine.
- Do not touch the engine, transmission, muffler, or muffler manifold while the engine is running, or soon after you shut off the engine, because these areas may be hot enough to cause burns.
- Do not leave a running machine unattended. The machine is considered unattended when you are 7.6 m (25 ft) or more from it, which remains in view, or whenever you leave the machine and it is not within view. Whenever you leave the machine and are within 7.6 m (25 ft) of the machine and it is still in view, set the controls in the NEUTRAL position and engage the parking brake to prevent the machine from moving.
- Before you leave the operating position, do the following:
 - Park the machine on a level surface.

- Shift the transmission to the NEUTRAL position.
- Engage the parking brake.
- Shut off the machine and remove the key.
- Wait for all movement to stop.
- If the machine ever vibrates abnormally, stop and shut off the machine immediately, wait for all movement to stop, and inspect for damage. Repair all damage to the machine before resuming operation.
- Do not park the machine or leave it unattended where it obstructs fire aisles, access to stairways, or fire equipment.
- Operate the machine only while in the operating position. You and your passengers should remain seated whenever the machine is in motion.
- Do not allow passengers to distract you either physically or verbally while you are driving the machine.
- Make starts, stops, turns, or direction reversals smoothly so as not to endanger passengers or lose control of the machine.
- Always be aware of and watch out for pedestrians. Do not drive the machine in a manner that endangers others.
- Under all travel conditions, operate the machine at a speed that allows you stop it safely.
- Yield the right of way to pedestrians, ambulances, fire trucks, vehicles, or other machines in emergency situations.
- Do not pass another machine traveling in the same direction at intersections, blind spots, or at other dangerous locations.
- Keep a clear view of the path of travel, observe other traffic and personnel, and maintain a safe clearance.
- Slow down or stop, as conditions dictate, and activate the sound-producing warning device at cross aisles and when visibility is obstructed at other locations.
- Do not drive the machine onto any elevator unless specifically authorized to do so. Approach elevators slowly, and then enter squarely after the elevator car is properly leveled. Once on the elevator, set the controls to the NEUTRAL position, shut off the engine, and engage the parking brake. Have all others leave the elevator before you enter or exit in the machine.
- Do not operate the machine when there is the risk of lightning.
- Do not add to or modify the machine.
- Use accessories and attachments approved by The Toro® Company only.

Slope Safety

- Slopes are a major factor related to loss-of-control and tip-over accidents, which can result in severe injury or death.
- Survey the site to determine which slopes are safe for operating the machine and establish your own procedures and rules for operating on those slopes. Always use common sense and good judgment when performing this survey.
- If you feel uneasy operating the machine on a slope, do not do it.
- Keep all movement on slopes slow and gradual. Do not suddenly change the speed or direction of the machine.
- Avoid operating the machine on wet terrain. Tires may lose traction. A rollover can occur before the tires lose traction.
- If possible, avoid turning the machine and use extreme caution on slopes, ramps, or inclines. Travel straight up and down a slope.
- If you begin to lose momentum while climbing a slope, gradually engage the brakes and slowly reverse the machine straight down the slope.
- Turning while going up or down a slope can be dangerous. If you must turn on a slope, do it slowly and cautiously. Avoid driving/turning on improperly banked curves.
- Heavy loads affect stability on a slope. Carry a reduced load and reduce your ground speed when operating on a slope or if the load has a high center of gravity. Secure the load to the cargo bed of the machine to prevent the load from shifting. Take extra care when hauling loads that shift easily (e.g., liquids, rock, sand, etc.).
- Avoid starting and stopping the machine on a slope. Stopping while going down a slope takes longer than stopping on a level surface. If you must stop the machine, avoid sudden speed changes, which can cause the machine to tip or roll over. Do not engage the brakes suddenly when rolling rearward, as this may cause the machine to overturn.
- Whenever you operate the machine on steep grades, stay on the designated vehicle paths, which should be marked with a warning of a steep grade.
- Operating the machine at an excessive speed down a slope will adversely affect its stability. Identify hazardous slopes with a warning in places preceding the beginning of the slope. Use care when approaching a slope, especially when you turn the machine downhill or the downhill slope exceeds 10% (6 degrees) on an unpaved surface or 20% (11 degrees) on a paved surface. Avoid parking on steep hills.

Loading Safety

- Do not exceed the gross vehicle weight (GVW) of the machine when operating it with a load in the cargo bed; refer to [Specifications \(page 14\)](#).
- Distribute the load in the cargo bed evenly to improve the stability and control of the machine.

Starting the Engine

1. Sit in the operator seat, insert the key into the key switch, and rotate the key clockwise to the ON or START position.

There are 2 modes of starting the machine:

- **Pedal Start**—turn the key switch to the ON position, press down the accelerator pedal, then release your foot from the accelerator pedal.

Note: When you remove your foot from the accelerator pedal, the engine shuts off.

- **Key Start**—turn the key switch to the START position and the engine remains on until the is turned to the OFF position.

Note: When using key start mode, you can engage the parking brake and work away from the machine while the engine still runs and the battery holds a charge.

Note: If you turn the key to the START position, the engine cranks until it starts. If the engine cranks for more than 10 seconds, return to the OFF position, and determine the issue (e.g., check the air cleaner for restrictions, ensure that the fuel tank is full, the spark is bad, etc.) before starting the machine again.

2. Move the gear-shift selector to the desired direction of travel for the machine.
3. Slowly step on the accelerator pedal.

Stopping the Machine

Important: When stopping the machine on an incline, use the service brakes to stop the machine and engage the parking brake to hold the machine in place. Using the accelerator to stall the machine on the hill can damage the machine.

1. Remove your foot from the accelerator pedal.
2. Slowly press the brake pedal to apply the service brakes until the machine comes to a complete stop.

Note: The stopping distance may vary depending on the machine load and speed.

Parking the Machine

1. Stop the machine using the service brakes by pressing and holding the brake pedal.
2. Engage the parking brake by pushing the parking-brake pedal down.
3. Rotate the key counterclockwise to the OFF position.
4. Remove the key.

After Operation

After Operation Safety

General Safety

- Before you leave the operating position, do the following:
 - Park the machine on a level surface.
 - Shift the transmission to the NEUTRAL position.
 - Engage the parking brake.
 - Shut off the machine and remove the key.
 - Wait for all movement to stop.
- If, during operation, you find that the machine is unsafe in any way, report it immediately to the owner and do not operate the machine until it is in safe operating condition.
- Allow the machine to cool before adjusting, servicing, cleaning, or storing it.

Hauling the Machine

- Use care when loading or unloading the machine into a trailer or a truck.
- Use full-width ramps for loading the machine into a trailer or a truck.
- Tie the machine down securely.

Note: Load the machine on the trailer with the front of the machine facing forward. If that is not possible, secure the machine hood to the frame with a strap, or remove the hood and transport and secure it separately or the hood may blow off during transport.

⚠ CAUTION

Loose seats may fall off the machine and trailer when transporting the machine, and the seats may land on another machine or obstruct the roadway.

Ensure that all seats are secured to the vehicle.

Towing the Machine

In case of an emergency, you can tow the machine for a short distance; however, this should not be a standard operating procedure.

⚠ WARNING

Towing at excessive speeds could cause a loss of steering control, resulting in personal injury.

Never tow the machine at faster than 8 km/h (5 mph).

Note: The power steering does not function, making it difficult to steer.

Towing the machine is a 2-person job. If you must move the machine a considerable distance, transport it on a truck or trailer.

1. Remove the drive belt from the machine.
2. Affix a tow line to the front center of the machine frame.
3. Move the transmission to the NEUTRAL position and disengage the parking brake.

Maintenance

Maintenance Safety

- Failing to perform regularly scheduled maintenance on the machine may cause driving it to become hazardous. Allow only trained and authorized personnel to maintain, repair, adjust, and inspect the machine.
- Before you leave the operating position, do the following:
 - Park the machine on a level surface.
 - Shift the transmission to the NEUTRAL position.
 - Engage the parking brake.
 - Shut off the machine and remove the key.
 - Wait for all movement to stop.
- Allow the machine to cool before adjusting, servicing, cleaning, or storing it.
- If possible, do not perform maintenance while the machine is running. Keep away from moving parts. If you must run the machine to perform a maintenance adjustment, keep your hands, feet, clothing, and any parts of the body away from any moving parts. Keep bystanders away from the machine.
- Do not operate the machine in an enclosed area without adequate ventilation. Ventilate maintenance and storage areas for the machine to remove flammable vapors (gasses), fumes, and other flammable materials according to applicable fire codes and ordinances.
- Disconnect the battery before repairing the machine. Disconnect the negative terminal first and the positive last. Connect the positive terminal first and the negative last.
- Support the machine with jack stands whenever you work under the machine.
- Immobilize the machine according to the manufacturer's instructions before performing any maintenance.
- Never interfere with the intended function of a safety device or reduce the protection provided by a safety device.
- Inspect the machine periodically to ensure that the sound-producing and/or visual device(s) (if so equipped) are maintained in good operating condition.
- Clean up oil and fuel spills.
- Avoid fire hazards and have fire protection equipment available.
- To reduce the potential fire hazard, keep the machine area free of excessive grease, grass, leaves, and accumulation of dirt.
- Keep all parts of the machine in good working condition and all the hardware properly tightened. Replace all worn or damaged decals.
- When performing maintenance, use only properly insulated tools.
- Regularly inspect the brakes, steering mechanisms, speed and directional control mechanisms, warning devices, lights, governors, guards, and safety devices according to the manufacturer's recommendations.
- Inspect and maintain the battery, motors, speed and directional controllers, limit switches, protective devices, electrical conductors/insulators, and connections according to the manufacturer's recommendation.
- Before disassembling the fuel system, drain the fuel from the system and turn all the valves to the OFF position to prevent flammable fuel from leaking.
- Check the fuel systems for leaks and the condition of parts. If you find a leak, do not use the machine until the leak has been repaired.
- To ensure optimum performance, use only genuine Toro replacement parts and accessories. Replacement parts and accessories made by other manufacturers could be dangerous, and such use could void the product warranty.
- Modifying and/or adding to the machine without the prior written approval of Toro may adversely affect the safe operation and performance of the machine. If you have modified the machine, you become the original equipment manufacturer of the modified vehicle, and now you have the responsibility to ensure that capacity, operation, warning, maintenance instruction plates, tags, and/or decals are updated accordingly.
- Do not overspeed the engine by changing the governor settings. To ensure safety and accuracy, have an authorized Toro distributor check the maximum engine speed with a tachometer.
- Maintain all safety labels in legible condition, as well as decals, nameplates, serial numbers, and the Operator's Manual. Obtain these items from the manufacturer and affix them in their proper place on the machine.
- After maintaining or repairing the machine, have a qualified and trained mechanic drive it in an authorized area away from other vehicles and pedestrians to ensure that it is adjusted and operates properly.
- Keep the machine clean to minimize hazards and to make detecting components needing service easier.
- Record all work performed in a maintenance record log by date, name of person performing

maintenance, and type of maintenance. The owner should periodically inspect the log to ensure that its entries are accurate and complete.

- If major repairs are ever necessary or assistance is required, contact an authorized Toro distributor.

Battery Safety

- To reduce the potential for fire, keep the batteries and motor area free of excessive grease, grass, leaves, and accumulation of dirt.
- Remove all jewelry and watches before servicing the batteries.
- Do not charge the batteries while servicing the machine.
- Always disconnect all the battery cables before servicing any electrical components; refer to [Disconnecting the Battery \(page 38\)](#).

Note: Disconnecting all the battery cables isolates power from the electrical system.

- Battery electrolyte contains sulfuric acid, which produces hydrogen, a gas that is explosive in certain conditions. Sulfuric acid can burn skin and damage clothing; when emitted in gas form, it can damage your lungs.
 - Always service, store, and charge the machine in a well-ventilated area.
 - Keep sparks and open flames away from the batteries.
 - Do not smoke near the batteries.
 - Do not use an open flame to check the level or leakage of battery electrolyte.
 - Wear proper eye, hand, and face protection.
 - Do not lean over the batteries at any time.
 - Avoid breathing in battery fumes.
 - Fill the batteries where clean water is always available for flushing the skin.
 - If you get electrolyte on your skin or eyes, flush the affected area for 20 minutes with clean water. Remove affected clothing. Seek medical attention immediately.
- Keep children and pets away from the batteries and electrolyte.
- Electrolyte is poisonous.
 - Do not drink the electrolyte.
 - If electrolyte has been swallowed, have them drink large quantities of water immediately to dilute the electrolyte, if possible.
 - Do not attempt to make them vomit.
 - Call a poison control center and get medical attention immediately.
- When not filling the batteries, keep the battery vent caps tight on the batteries. Do not operate the machine if any of the vent caps are missing or damaged.
- When removing or installing the batteries, do not allow the battery terminals to touch any metal parts of the machine.
- Do not allow metal tools to short between the battery terminals and metal parts of the machine.
- Do not check a battery charge by placing a metal object across the posts. This causes sparks, which can cause an explosion.
- Always keep the battery retainers in place to protect and secure the batteries.
- Read and understand the charging instructions before charging the batteries; refer to [Charging the Battery \(page 39\)](#). Also, take the following precautions when charging the batteries:
 - Turn the machine key switch to OFF before connecting the charger to a power source.
 - Use only the battery charger supplied with the machine to charge the batteries.
 - Do not charge a damaged or frozen battery.
 - Always unplug the AC power cord from the power outlet before unplugging it from the machine charging receptacle to avoid sparks.
 - If a battery gets hot while charging, begins emitting large amounts of gasses, or spews electrolyte, immediately disconnect the charger power cord from the power outlet. Have the machine serviced by an Authorized Service Dealer before using it again.

Recommended Maintenance Schedule(s)

Maintenance Service Interval	Maintenance Procedure
After the first 5 hours	<ul style="list-style-type: none"> • Change the engine oil.
After the first 8 hours	<ul style="list-style-type: none"> • Check the condition of the drive belt. • Check the tension of the starter-generator belt.
After the first 50 hours	<ul style="list-style-type: none"> • Check the air filter for the carbon canister.

Maintenance Service Interval	Maintenance Procedure
After the first 100 hours	<ul style="list-style-type: none"> • Perform the guidelines for breaking in a new machine.
Before each use or daily	<ul style="list-style-type: none"> • Check the tire pressure. • Check the engine-oil level. • Check gear-shift operation. • Check the brake-fluid level. Check the brake-fluid level before you start the machine. • Check and clean around the muffler. • Check and clean around the air intake.
Every 50 hours	<ul style="list-style-type: none"> • Under special operating conditions (refer to Maintaining the Machine under Special Operating Conditions)—change the engine oil.
Every 100 hours	<ul style="list-style-type: none"> • Remove the air-cleaner cover and clean out the debris. Do not remove the air-cleaner element. • Clean out the debris in the dust cap. • Under special operating conditions (refer to Maintaining the Machine under Special Operating Conditions)—replace the air-cleaner element. Replace the air-cleaner element sooner if dirty or damaged. • Under normal operating conditions—change the engine oil. • Check the spark plug. • Check the condition of the tires and rims. • Torque the wheel-lug nuts. • Inspect the steering and suspension for loose or damaged components. • Check the front wheel camber and toe-in. • Check the operation of the neutral gear-shift position. • Check the brakes.
Every 200 hours	<ul style="list-style-type: none"> • Under normal operating conditions—replace the air-cleaner element. Replace the air-cleaner element sooner if dirty or damaged. • Check the air filter for the carbon canister. • Check the condition and tension of the drive belt. • Check the tension of the starter-generator belt.
Every 250 hours	<ul style="list-style-type: none"> • Check the transaxle-fluid level.
Every 300 hours	<ul style="list-style-type: none"> • Grease the front wheel bearings.
Every 400 hours	<ul style="list-style-type: none"> • Replace the fuel filters. • Clean the primary drive clutch. • Replace the service and parking-brake pads.
Every 500 hours	<ul style="list-style-type: none"> • Check the fuel lines and connections. • Change the transaxle fluid.
Every 1,000 hours	<ul style="list-style-type: none"> • Change the brake fluid.

Note: Download a free copy of the electrical schematic by visiting www.Toro.com and searching for your machine from the Manuals link on the home page.

Important: Refer to your engine owner's manual for additional maintenance procedures.

▲ WARNING

Failure to properly maintain the machine could result in premature failure of machine systems, causing possible harm to you or bystanders.

Keep the machine well maintained and in good working order as indicated in these instructions.

⚠ CAUTION

Only qualified and authorized personnel should maintain, repair, adjust, or inspect the machine.

- Avoid fire hazards and have fire-protection equipment present in the work area. Do not use an open flame to check fluid levels or leakage of fuel, battery electrolyte, or coolant.
- Do not use open pans of fuel or flammable cleaning fluids for cleaning parts.

⚠ CAUTION

If you leave the key in the switch, someone could accidentally start the engine and seriously injure you or other bystanders.

Shut off the engine and remove the key from the switch before you perform any maintenance.

Daily Maintenance Checklist

Duplicate this page for routine use.

Maintenance Check Item	For the week of:						
	Monday	Tuesday	Wednesday	Thursday	Friday	Saturday	Sunday
Check the brake and parking brake operation.							
Check the gear shift/neutral operation.							
Check the water level of the batteries.							
Check the brake-fluid level.							
Check for unusual operating noises.							
Check the tire pressure.							
Check for fluid leaks.							
Check the instrument operation.							
Check the accelerator operation.							
Touch up any damaged paint.							
Wash the machine.							

Maintaining the Machine under Special Operating Conditions

Important: If the machine is subjected to any of the conditions listed below, perform maintenance twice as frequently:

- Desert operation
- Cold climate operation—below 10°C (50°F)
- Frequent operation in dusty conditions
- Construction work
- After extended operation in mud, sand, water, or similar dirty conditions, do the following:
 - Have your brakes inspected and cleaned as soon as possible. This prevents any abrasive material from causing excessive wear.
 - Wash the machine using water alone or with a mild detergent.

Important: Do not use brackish or reclaimed water to clean the machine.

Pre-Maintenance Procedures

Preparing the Machine for Maintenance

1. Park the machine on a level surface.
2. Shift the transmission to the NEUTRAL position.
3. Engage the parking brake.
4. Shut off the engine and remove the key.

Removing the Seat Assembly

Lift the seat assembly so that the tabs can slide out of the frame brackets (Figure 15).

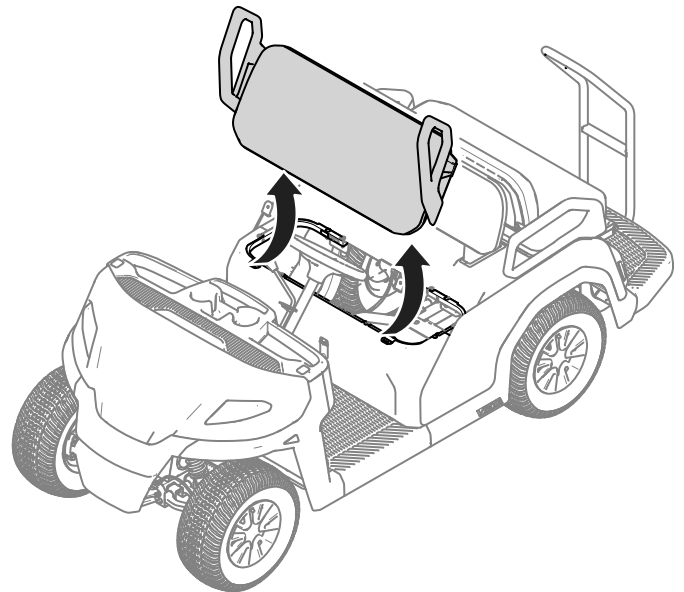


Figure 15

g405486

Installing the Seat Assembly

Slide the seat-assembly tabs into the frame brackets and lower the seat assembly (Figure 16).

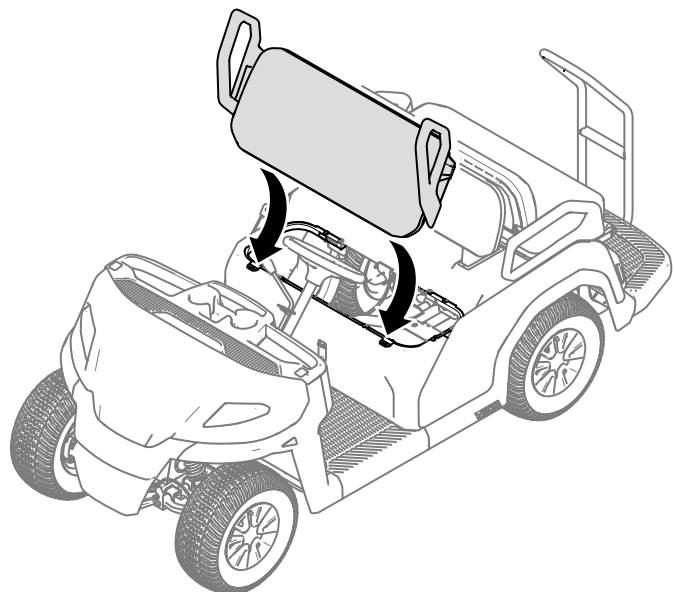


Figure 16

g405485

Removing the Hood

Lift the hood from the machine as shown in Figure 17.

Important: Be careful to not damage the headlight wire-harness connectors while you remove the hood.

If you need to completely remove the hood from the machine, disconnect the wire-harness connectors from the headlights.

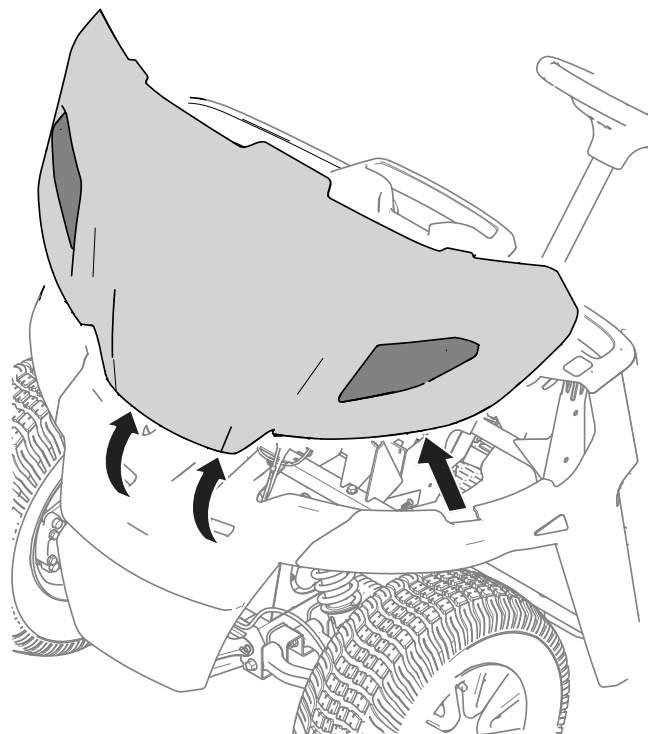


Figure 17

g411834

Installing the Hood

1. Ensure that the wire-harness connectors are installed to the headlights,
2. Slide the top of the hood under the dash and inside the fenders.
3. Insert the front hood tabs into the front bumper.
4. Insert the hood side tabs into the fenders by pushing on the hood just below the lights.

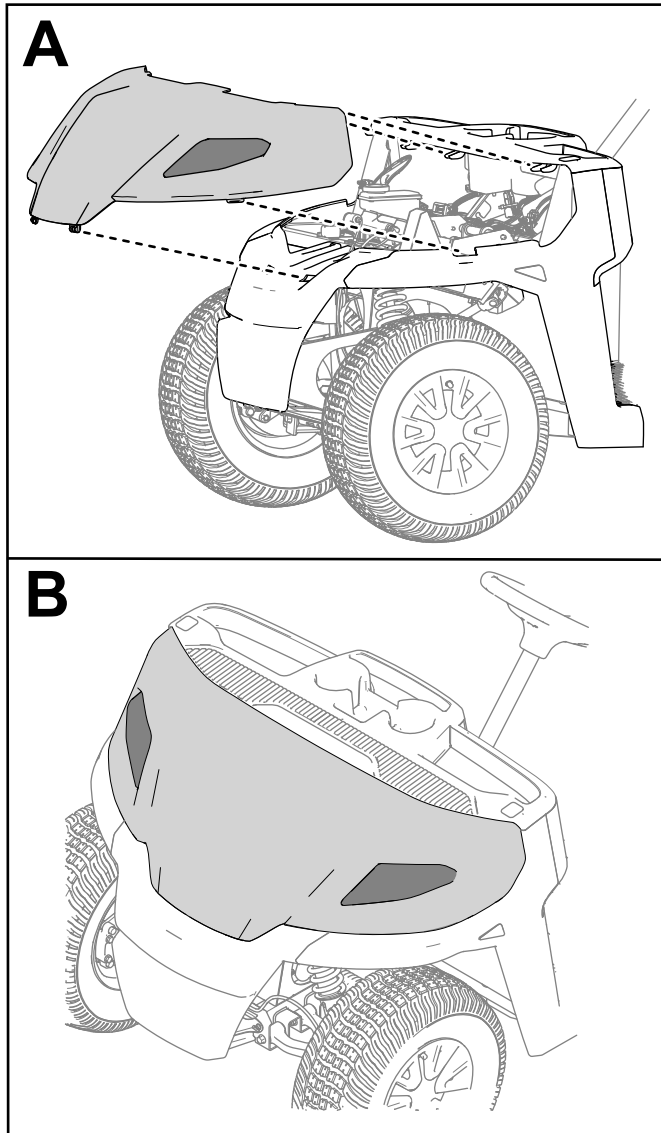


Figure 18

g420146

Lifting the Machine

⚠ DANGER

The machine may be unstable when using a jack. The machine could slip off the jack, injuring anyone beneath it.

- Do not start the machine while the machine is on a jack.
- Always remove the key from the key switch before getting off the machine.
- Block the tires when the machine is supported by lifting equipment.
- Use jack stands to support the machine once you have lifted it.

Important: Whenever you run the machine for routine maintenance and/or diagnostics, ensure that the rear wheels of the machine are 25 mm (1 inch) off the ground, with the rear axle supported on jack stands.

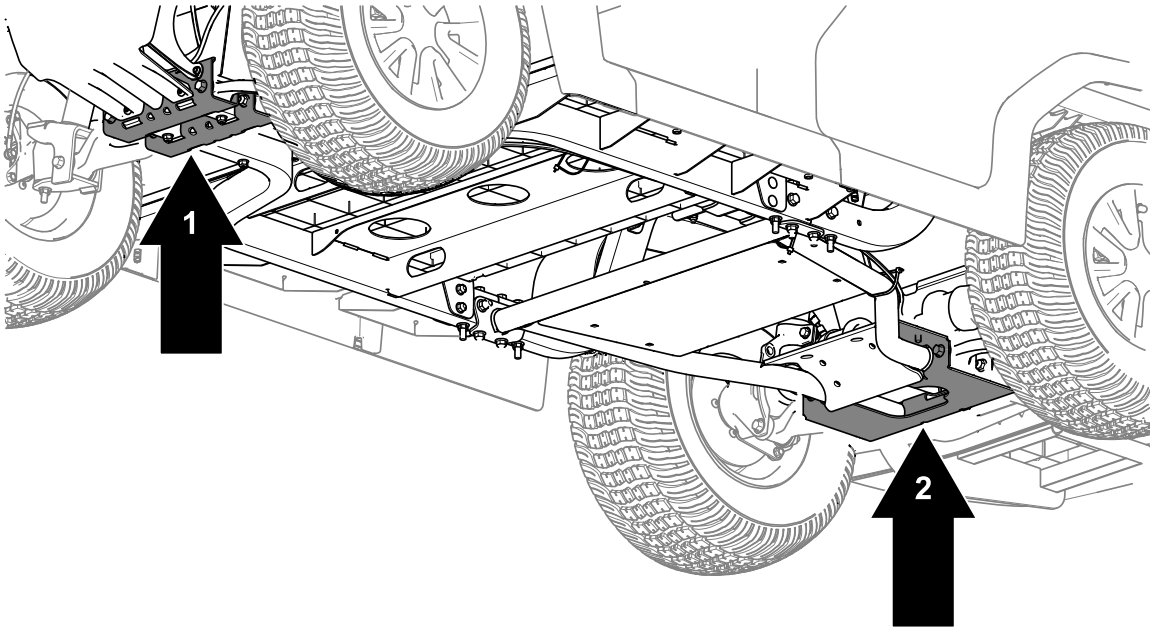


Figure 19

g411857

1. Front lifting point

2. Rear lifting point

Lubrication

Greasing the Front Wheel Bearings

Service Interval: Every 300 hours

Grease specification: Mobilgrease XHP™-222

Removing the Hub and Rotor

1. Lift the front of the machine and support it with jack stands.
2. Remove the wheel cover and the 4 lug nuts that secure the wheel to the hub ([Figure 20](#)).

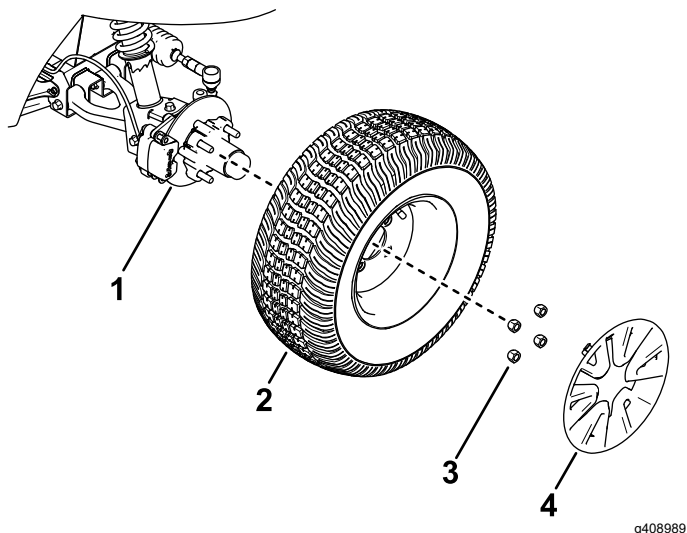


Figure 20

1. Hub
2. Wheel
3. Lug nut
4. Wheel cover

3. Remove the flange-head bolts (3/8 x 3/4 inch) that secure the bracket for the brake assembly to the spindle and separate the brake from the spindle (Figure 21).

Note: Support the brake assembly before proceeding to the next step.

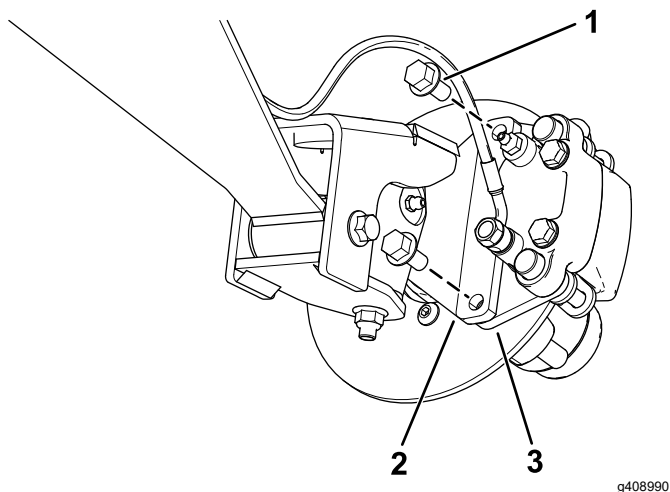


Figure 21

1. Flange-head bolts (3/8 x 3/4 inch)
2. Spindle
3. Caliper bracket (brake assembly)

4. Remove the dust cap from the hub (Figure 22).

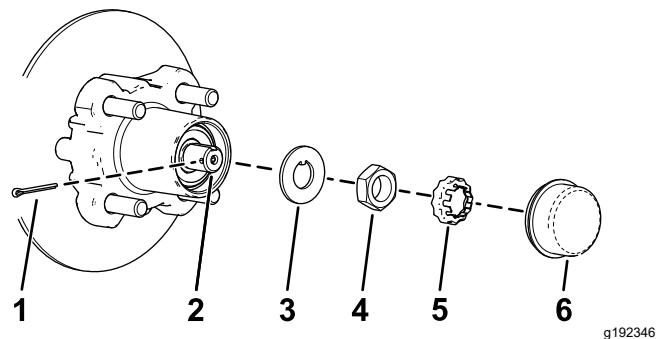


Figure 22

1. Cotter pin
2. Spindle
3. Tab washer
4. Spindle nut
5. Nut retainer
6. Dust cap

5. Remove the cotter pin and nut retainer from the spindle and spindle nut (Figure 22).

6. Remove the spindle nut from the spindle, and separate the hub and rotor assembly from the spindle (Figure 22 and Figure 23).

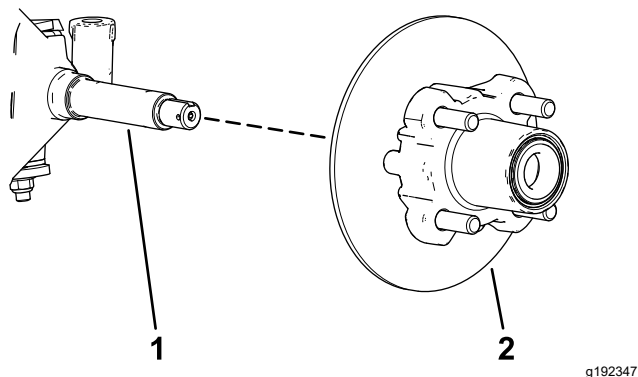


Figure 23

1. Spindle
2. Hub and rotor assembly

7. Wipe clean the spindle with a rag.
8. Repeat steps 1 through 7 to the hub and rotor at the other side of the machine.

Greasing the Wheel Bearings

1. Remove the outboard bearing from the hub (Figure 24).

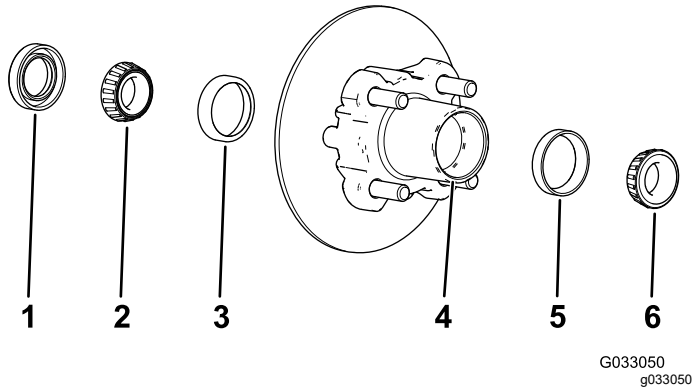


Figure 24

1. Seal
 2. Inboard bearing
 3. Inboard-bearing race
 4. Bearing cavity (hub)
 5. Outboard-bearing race
 6. Outboard bearing
-
2. Remove the seal, inboard bearing from the hub (Figure 24).
 3. Wipe clean the seal and check for wear and damage.
Note: Do not use cleaning solvent to clean the seal. Replace the seal if it is worn or damaged.
 4. Clean the bearings and races, and check these parts for wear and damage.
Note: Replace all worn or damaged parts. Ensure that the bearings and races are clean and dry.
 5. Clean the cavity of the hub of all grease, dirt, and debris (Figure 24).
 6. Pack the bearings with the specified grease.
 7. Fill the cavity of hub 50 to 80% full of the specified grease (Figure 24).
 8. Assemble the inboard bearing onto the race at the inboard side of the hub and install the seal (Figure 24).
 9. Repeat steps 1 through 8 to the bearings for the other hub.

Installing the Hub and Rotor

1. Apply a light coat of the specified grease to the spindle (Figure 25).

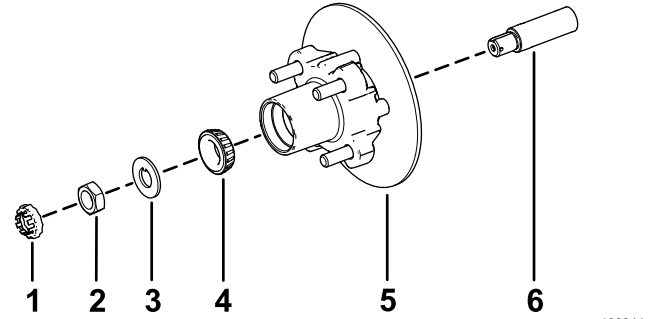


Figure 25

1. Nut retainer
 2. Spindle nut
 3. Tab washer
 4. Outer bearing
 5. Hub, rotor, inner bearing, race, and seal
 6. Spindle
-
2. Assemble the hub and rotor onto the spindle with the rotor inboard (Figure 25).
 3. Assemble the outboard bearing onto the spindle and seat the bearing to the outboard race (Figure 25).
 4. Assemble the tab washer onto the spindle (Figure 25).
 5. Thread the spindle nut onto the spindle and tighten the nut to 15 N·m (11 ft-lb), while rotating the hub to seat the bearing (Figure 25).
 6. Loosen the spindle nut until the hub rotates freely.
 7. Torque the spindle nut to 170 to 225 N·cm (15 to 20 in-lb).
 8. Install the retainer over the nut and check the alignment of the slot in the retainer and the hole in the spindle for the cotter pin (Figure 26).
Note: If the slot in the retainer and the hole in the spindle are not aligned, tighten the spindle nut to align the slot and hole to a maximum torque of 226 N·cm (20 in-lb) on the nut.

Engine Maintenance

Engine Safety

- Shut off the engine, remove the key, and wait for all moving parts to stop before checking the oil or adding oil to the crankcase.
- Keep your hands, feet, face, clothing, and other body parts away from the muffler and other hot surfaces.

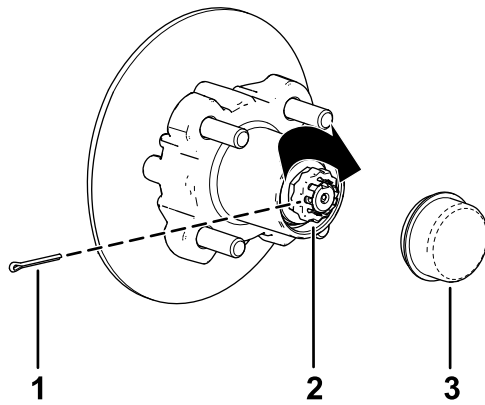


Figure 26

g192345

1. Cotter pin
2. Nut retainer
3. Dust cap

Servicing the Air Cleaner

Servicing the Air-Cleaner Cover

Service Interval: Every 100 hours—Remove the air-cleaner cover and clean out the debris. Do not remove the air-cleaner element.

Every 100 hours—Clean out the debris in the dust cap.

Check the air-cleaner body for damage which could cause an air leak. Replace a damaged air-cleaner body.

Clean the air-cleaner cover and remove the debris from the dust cap (Figure 27).

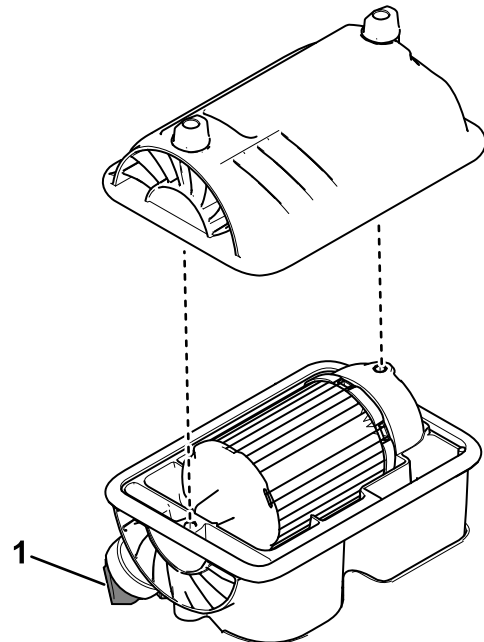


Figure 27

g413899

1. Dust cap

Installing the Brakes and Wheels

1. Clean the 2 flange-head bolts (3/8 x 3/4 inch) and apply a coat of medium-strength thread-locking compound to the threads of the bolts.
2. Align the brake pads to either side of the rotor (Figure 21) and the holes in the caliper bracket with the holes in the brake mount of the spindle frame (Figure 25).
3. Secure the caliper bracket to the spindle frame (Figure 21) using the 2 flange-head bolts (3/8 x 3/4 inch).

Torque the 2 flange-head bolts to 47 to 54 N·m (35 to 40 ft-lb).

4. Align the holes in the wheel to the studs of the hub and assemble the wheel to the hub with the valve stem outward (Figure 20).

Note: Ensure that the mounting surface of the wheel is flush with the hub.

5. Secure the wheel to the hub using the lug nuts (Figure 20).

Torque the lug nuts to 108 to 122 N·m (80 to 90 ft-lb).

6. Repeat steps 1 through 5 for the brake and wheel on the other side of the machine.

Replacing the Air-Cleaner Element

Service Interval: Every 100 hours—Under special operating conditions (refer to Maintaining the Machine under Special Operating Conditions)—replace the air-cleaner element. Replace the air-cleaner element sooner if dirty or damaged.

Every 200 hours—Under normal operating conditions—replace the air-cleaner element. Replace the air-cleaner element sooner if dirty or damaged.

Note: Service the air-cleaner element more frequently (every few hours) if operating conditions are extremely dusty or sandy.

1. Gently slide the air-cleaner element out of the air-cleaner body (Figure 28).

Note: Avoid knocking the air cleaner into the side of the body.

Important: Do not attempt to clean the air-cleaner element.

2. Inspect the new element for damage by looking into the element while shining a bright light on the outside of the element.

Note: Holes in the element appear as bright spots. Inspect the element for tears, an oily film, or damage to the rubber seal. If the element is damaged, do not use it.

3. Carefully slide the element into the air-cleaner body.

Important: Do not press on the soft inside area of the element.

4. Install the air-cleaner cover (Figure 28).

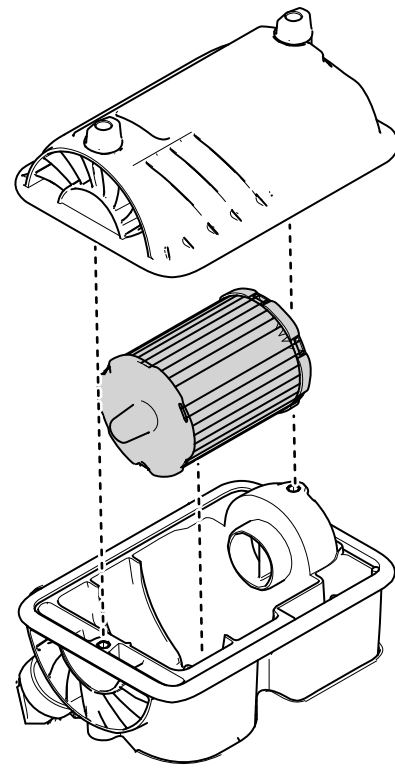


Figure 28

g408487

Servicing the Engine Oil

Engine-Oil Specifications

Crankcase Capacity: 0.94 L (1 US qt)

Oil Type: API service class SJ or higher detergent oil

Viscosity: See the table below.

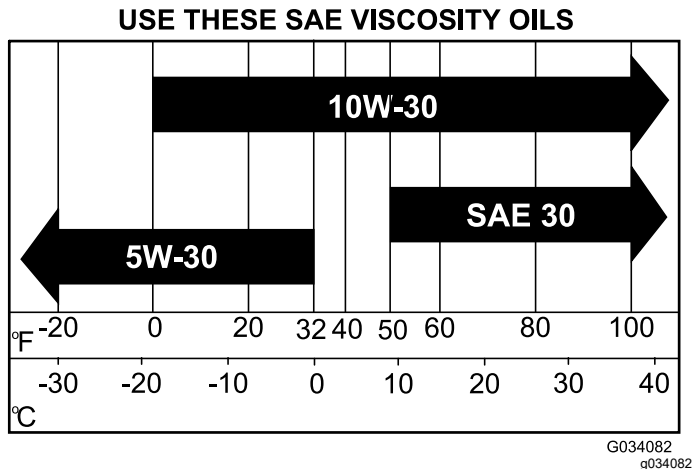


Figure 29

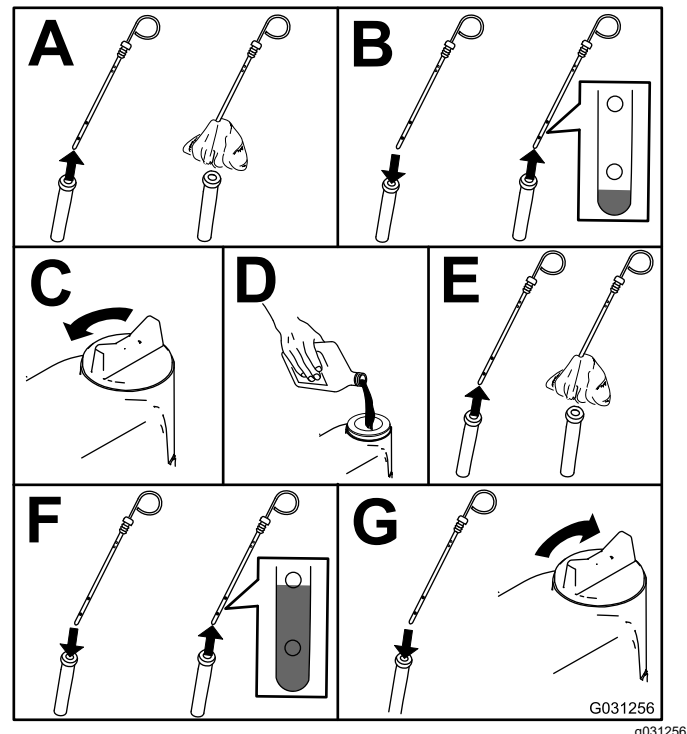


Figure 30

Checking the Engine-Oil Level

Service Interval: Before each use or daily

Note: The machine is shipped with oil in the crankcase; however, check the oil before and after you start the engine.

The best time to check the engine oil is when the engine is cool before it has been started for the day. If you have already run the engine, allow the oil to drain back down to the sump for at least 10 minutes before checking. If the oil level is low, add oil to bring the oil level to the Full mark. Do not overfill.

1. Park the machine on a level surface.
2. Engage the parking brake.
3. Shut off the engine and remove the key.
4. Check the engine-oil level as shown in [Figure 30](#).

Changing the Engine Oil

Service Interval: After the first 5 hours—Change the engine oil.

Every 50 hours—Under special operating conditions (refer to Maintaining the Machine under Special Operating Conditions)—change the engine oil.

Every 100 hours—Under normal operating conditions—change the engine oil.

Note: Change the oil more frequently when operating conditions are extremely dusty or sandy.

Note: Dispose of the used engine oil and oil filter at a certified recycling center.

1. Start the machine and let the engine run for a few minutes.
2. Park the machine on a level surface.
3. Engage the parking brake.
4. Shut off the engine and remove the key.
5. Change the engine oil as shown in [Figure 31](#).

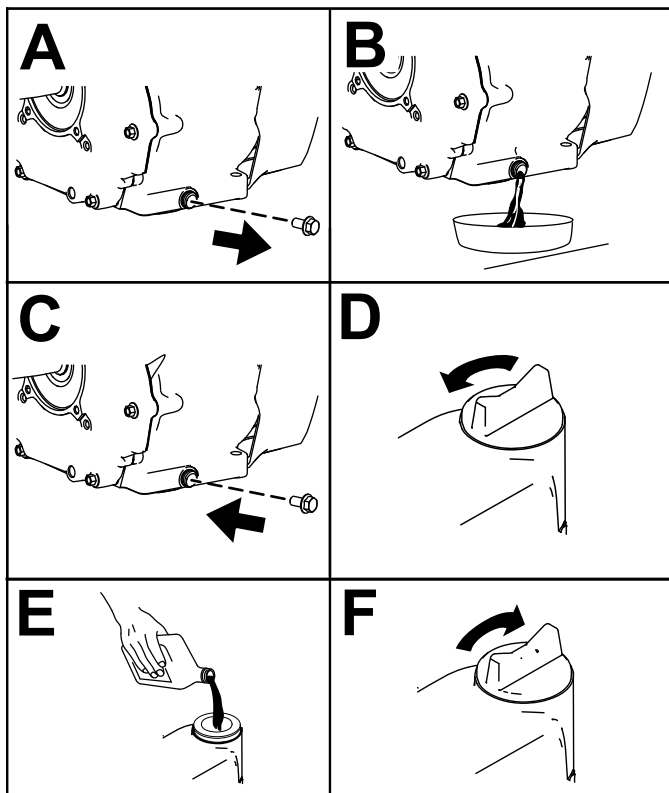


Figure 31

g416479

Servicing the Spark Plug

Checking and Replacing the Spark Plug

Service Interval: Every 100 hours/Yearly (whichever comes first) Replace the spark plug if necessary.

EFI Model Spark Plug Type: Champion XC92YC

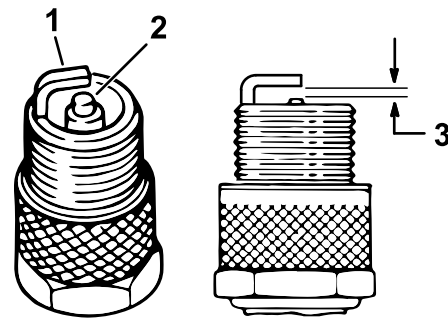
Air Gap for EFI Models: 0.76 mm (0.03 inch)

Important: You must replace a cracked, fouled, dirty, or malfunctioning spark plug. Do not sand-blast, scrape, or clean electrodes by using a wire brush because grit may eventually release from the plug and fall into the cylinder. The result is usually a damaged engine.

Note: The spark plug usually lasts a long time; however, the plug should be removed and checked whenever the engine malfunctions.

1. Clean the area around the spark plug so that foreign matter cannot fall into the cylinder when you remove the spark plug.
2. Pull the wire off the terminal of the spark plug.
3. Remove the plug from the cylinder head.
4. Check the condition of the side electrode, center electrode, and center electrode insulator to ensure that there is no damage ([Figure 32](#)).

Note: Do not use a damaged or worn spark plug. Replace it with a new spark plug of the specified type.



g379699

Figure 32

1. Center electrode insulator
3. Air gap (not to scale)—0.76 mm (0.03 inch)

2. Side electrode

5. Set the air gap between the center and side of the electrodes at or **0.76 mm (0.03 inch)** as shown in [Figure 32](#).
6. Install the spark plug into the cylinder head, and torque the plug to 27 N·m (20 ft-lb).
7. Install the spark-plug wire.

Fuel System Maintenance

Checking the Fuel Lines and Connections

Service Interval: Every 500 hours/Yearly (whichever comes first)

Check the fuel lines, fittings, and clamps for signs of leaking, deterioration, damage, or loose connections.

Note: Repair any damaged or leaking fuel system component before using the machine.

Replacing the Fuel Filters

Service Interval: Every 400 hours/Yearly (whichever comes first)

This machine is equipped with a 10 micron and 30 micron fuel filter (Figure 33).

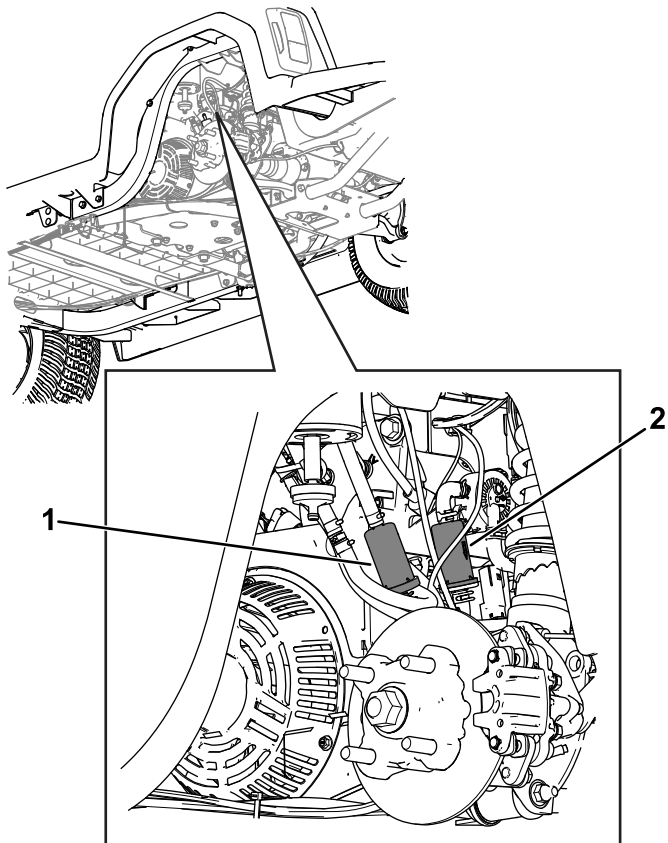


Figure 33

Left rear tire removed for clarity.

1. Filter (30 micron)
2. Filter (10 micron)

2. Engage the parking brake.
3. Shut off the engine and remove the key.
4. Disconnect the battery; refer to [Disconnecting the Battery \(page 38\)](#).
5. Place a clean container under the fuel filter and replace the fuel filter as shown in [Figure 34](#).

Note: Ensure that the flow-direction arrow on the replacement filter points toward the engine. Ensure that the 30-micron filter is the first in-line filter (i.e., closer to the fuel tank). The 10-micron filter should be the second in-line filter (i.e., closer to the engine).

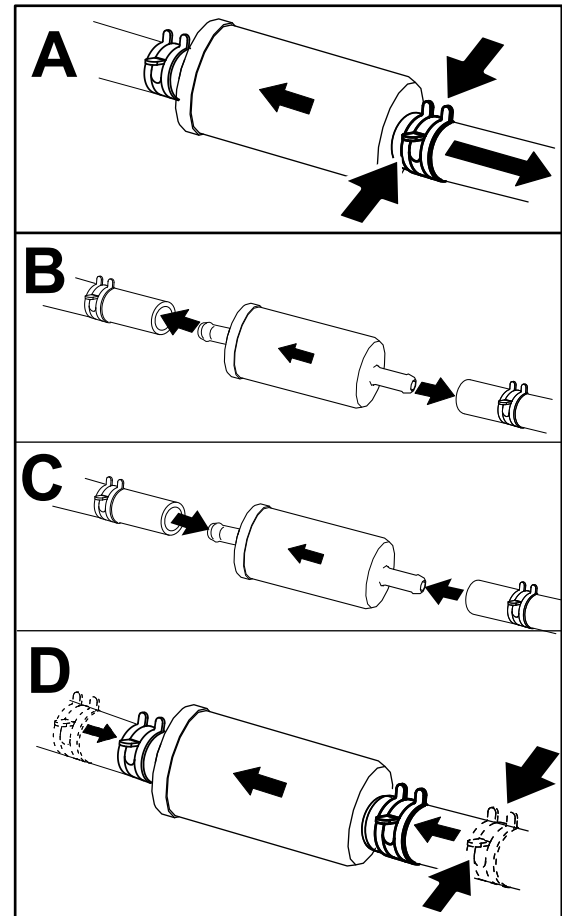


Figure 34

g400217

6. Connect the battery; refer to [Connecting the Battery \(page 39\)](#).

1. Park the machine on a level surface.

Servicing the Carbon Canister

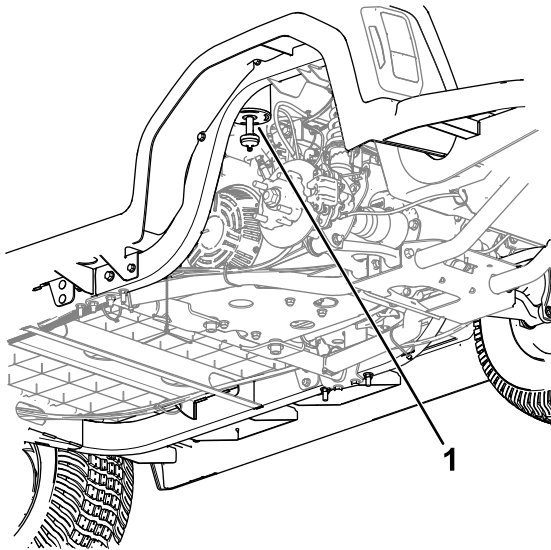
Checking the Air Filter for the Carbon Canister

Service Interval: After the first 50 hours

Every 200 hours

Check the opening at the bottom of the air filter for the carbon canister to ensure that it is clean and free of debris and obstructions ([Figure 35](#)).

Clean the air filter for the carbon canister with clean, compressed air.



g417891

Figure 35

Left rear tire removed for clarity

1. Air-filter opening

Electrical System Maintenance

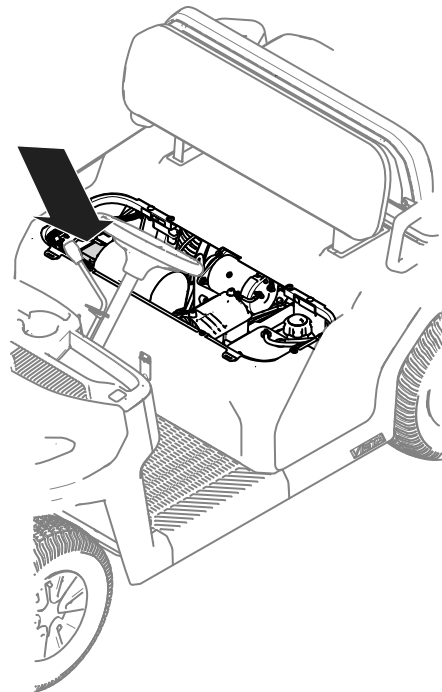
Servicing the Battery

Battery voltage: 12 V with 300 A (cold-cranking) at -18°C (0°F).

- Always keep the battery clean and fully charged.
- If the battery terminals are corroded, clean them with a solution of 4 parts water and 1 part baking soda.
- Apply a light coating of grease to the battery terminals to prevent corrosion.

Accessing the Battery

Lift the front seat assembly to access the battery (shown in [Figure 36](#)).



g409057

Figure 36

Disconnecting the Battery

⚠ WARNING

Incorrect battery cable routing could damage the machine and cables, causing sparks. Sparks can cause the battery gasses to explode, resulting in personal injury.

- Always disconnect the negative (black) battery cable before disconnecting the positive (red) cable.
- Always reconnect the positive (red) battery cable before reconnecting the negative (black) cable.
- Always keep the battery strap in place to protect and secure the battery.

⚠ WARNING

Battery terminals or metal tools could short against metal machine components, causing sparks. Sparks can cause the battery gasses to explode, resulting in personal injury.

- When removing or installing the battery, do not allow the battery terminals to touch any metal parts of the machine.
- Do not allow metal tools to short between the battery terminals and metal parts of the machine.

Disconnect the battery as shown in [Figure 37](#).

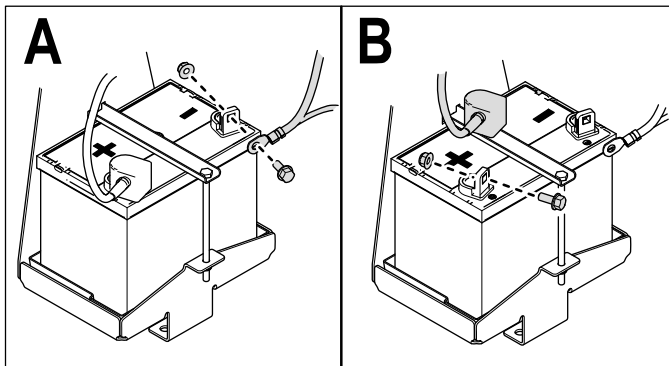


Figure 37

g409010

Removing the Battery

1. Disconnect the battery cables; refer to [Disconnecting the Battery \(page 38\)](#).
2. Remove the battery as shown in [Figure 38](#).

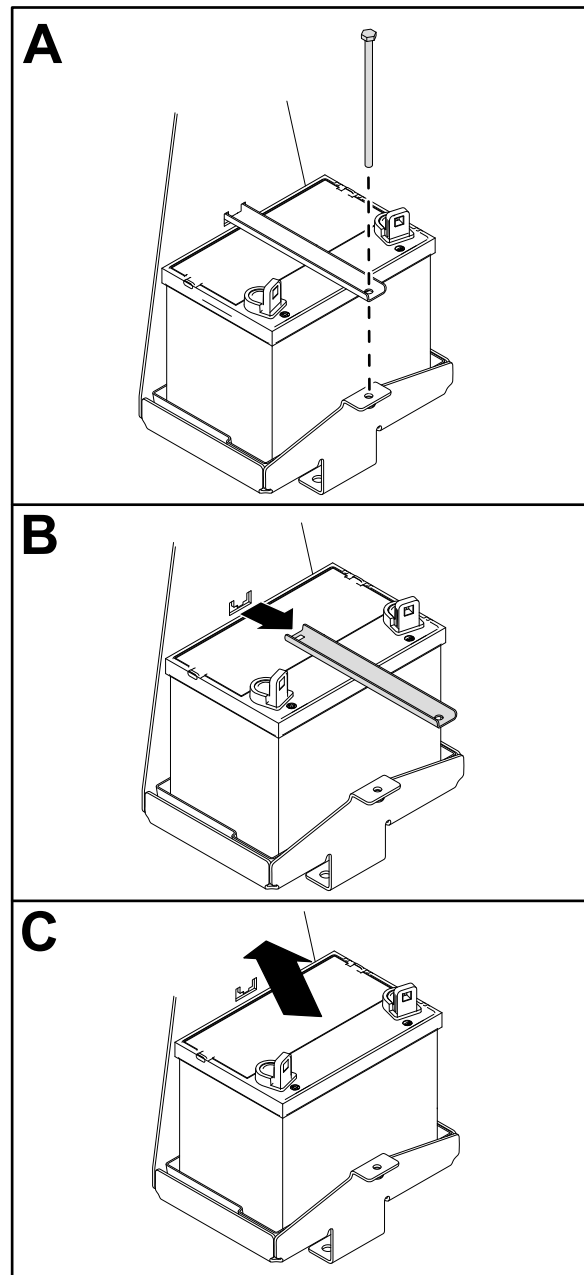


Figure 38

g409055

Installing the Battery

1. Install the battery as shown in [Figure 39](#).

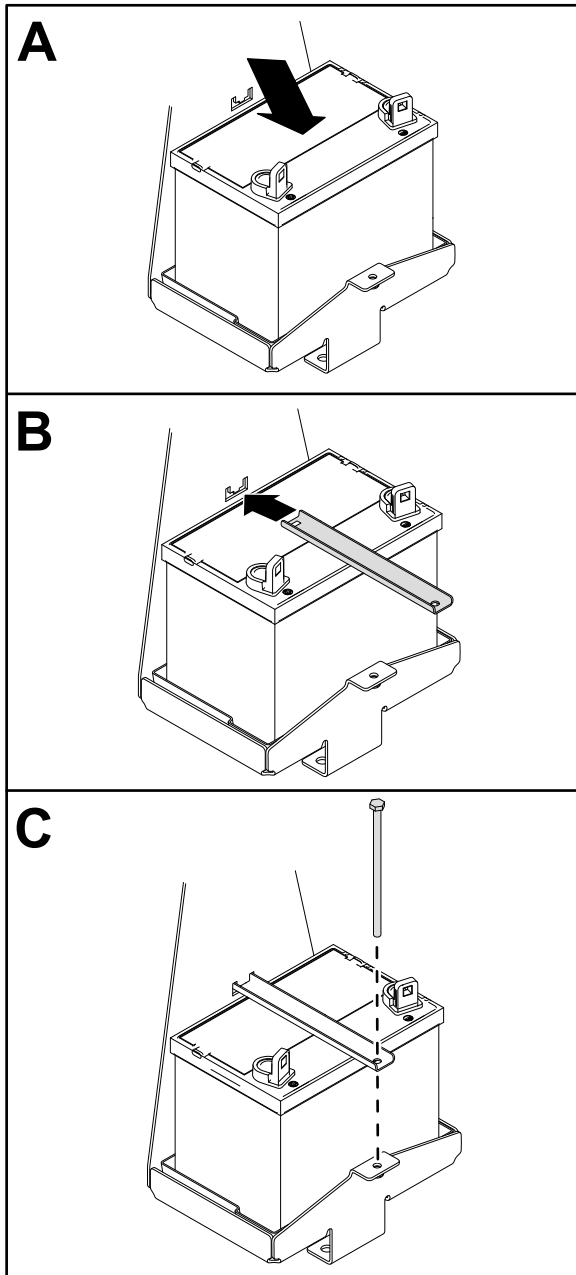


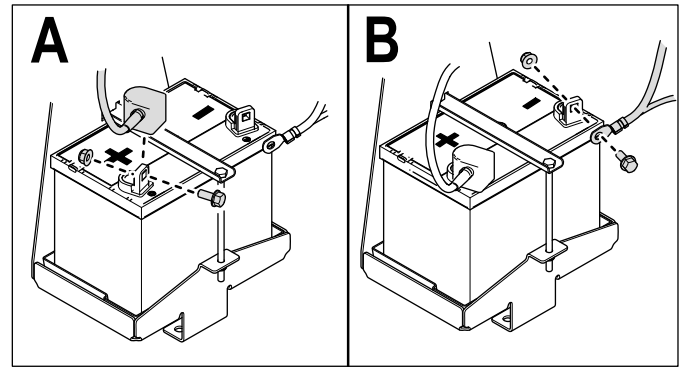
Figure 39

g409056

2. Connect the battery cables; refer to [Connecting the Battery](#) (page 39).

Connecting the Battery

Connect the battery as shown in [Figure 40](#).



g409012

Figure 40

Charging the Battery

⚠ WARNING

Charging the battery produces gasses that can explode.

Never smoke near the battery and keep sparks and flames away from battery.

Important: Always keep the battery fully charged. This is especially important to prevent battery damage when the temperature is below 0°C (32°F).

1. Remove the battery from the machine; refer to [Removing the Battery](#) (page 38).
2. Connect a 3 to 4 A battery charger to the battery posts. Charge the battery at a rate of 3 to 4 A for 4 to 8 hours (12 V).

Note: Do not overcharge the battery.

3. Install the battery; refer to [Installing the Battery](#) (page 39).

Storing the Battery

If you store the machine for more than 30 days, remove the battery and charge it fully. Either store it on the shelf or on the machine. Leave the cables disconnected if it is stored on the machine. Store the battery in a cool atmosphere to avoid quick deterioration of the charge in the battery. To prevent the battery from freezing, make sure it is fully charged.

Replacing the Headlight

Specification: See your *Parts Catalog*.

1. Disconnect the battery; refer to [Disconnecting the Battery \(page 38\)](#).
2. Remove the hood.
3. Disconnect the wire-harness connector from the headlight connector ([Figure 41](#)).

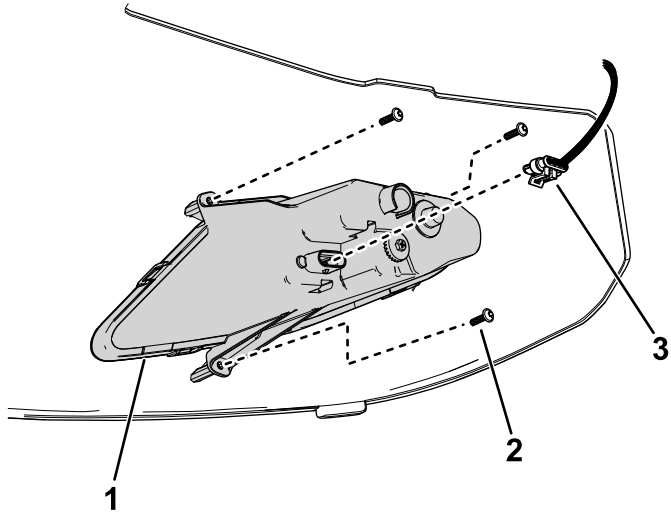


Figure 41

g411791

1. Headlight
2. Screw
3. Wire-harness connector

4. Remove the screws that secure the headlight to the hood.

Note: Retain all parts for installation of the new headlight.

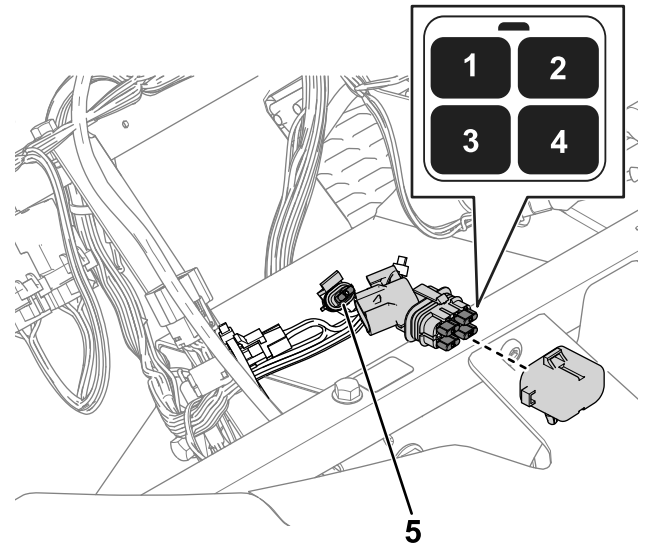
5. Remove the old headlight and use the screws to secure the new headlight to the hood.

Torque the screws to 1 N·m (9 in-lb).

6. Connect the wire-harness connector to the headlight connector ([Figure 41](#)).

Locating the Fuses

The fuses are located under the hood ([Figure 42](#)).



g409721

Figure 42

1. Engine (10 A)
2. Main system B+ (10 A)
3. USB plug and beacon (10 A)
4. Horn and headlights (20 A)
5. Optional 12V kit (10 A)

Drive System Maintenance

Maintaining the Tires

Service Interval: Every 100 hours—Check the condition of the tires and rims.

Every 100 hours—Torque the wheel-lug nuts.

1. Inspect the tires and rims for signs of wear and damage.

Note: Operating accidents, such as hitting curbs, can damage a tire or rim and also disrupt wheel alignment, so inspect tire condition after an accident.

2. Torque the wheel lug nuts to 108 to 122 N·m (80 to 90 ft-lb).

Inspecting the Steering and Suspension Components

Service Interval: Every 100 hours—Inspect the steering and suspension for loose or damaged components.

With the steering wheel at the centered position (Figure 43), turn the steering wheel to the left or right. If you turn the steering wheel more than 13 mm (1/2 inch) to the left or right, and the tires do not turn, check the following steering and suspension components to ensure that they are not loose or damaged:

- Steering shaft to the steering-rack assembly joint

Important: Inspect the condition and security of the pinion-shaft seal (Figure 44).

- Steering-rack assembly tie rods

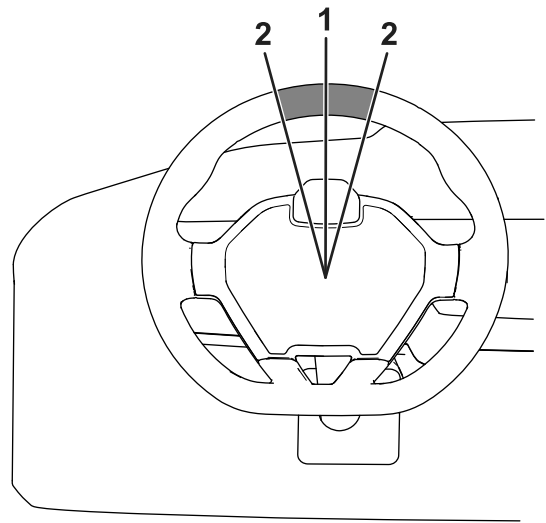


Figure 43

g415333

1. Steering wheel at the centered position
2. 13 mm (1/2 inch) from the center of the steering wheel

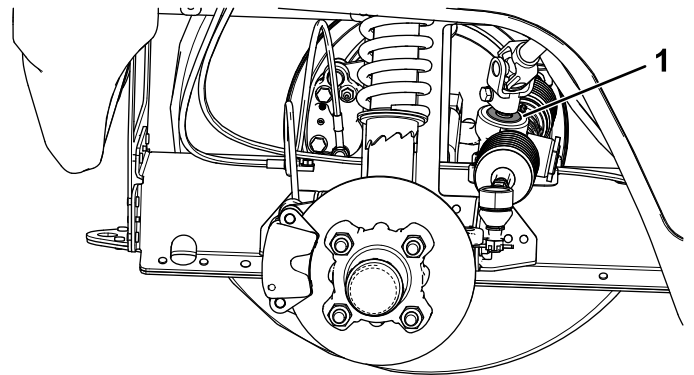


Figure 44

g313576

1. Pinion-shaft seal

Adjusting the Wheel Alignment

Service Interval: Every 100 hours/Yearly (whichever comes first)—Check the front wheel camber and toe-in.

Preparing to Adjust Camber or Toe-in

1. Check the tire pressure to ensure that the front tires are inflated to 138 kPa (20 psi).
2. Either add weight to the driver's seat equal to the average operator who will run the machine, or have an operator sit on the seat. The weight or operator must remain on the seat for the duration of the adjustment procedure.

- On a level surface, roll the machine straight back 2 to 3 m (6 to 10 ft) and then straight forward to the original starting position. This allows the suspension to settle into the operating position.

Adjusting the Camber

Owner provided tools: spanner wrench, Toro Part 132-5069; refer to your authorized Toro distributor.

Important: Make the camber adjustments only if you are using a front attachment or if there is uneven tire wear.

Note: This procedure can be performed on the front and rear tires.

- Check the camber alignment at each wheel; the alignment should be as close to neutral (zero) as possible.

Note: The tires should be aligned with the tread evenly on the ground to reduce uneven wear.

- If the wheel camber is out of alignment, use the spanner wrench to rotate the collar on the shock absorber to align the wheel ([Figure 45](#)).

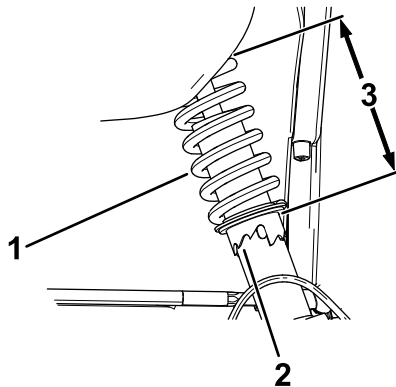


Figure 45

g411802

- Shock-absorber spring
- Collar
- Spring length

Adjusting the Front Wheel Toe-in

Important: Before adjusting toe-in, ensure that the camber adjustment is as close to neutral as possible; refer to [Adjusting the Camber \(page 42\)](#).

- Measure the distance between both of the front tires at the axle height at both the front and rear of the front tires ([Figure 46](#)).

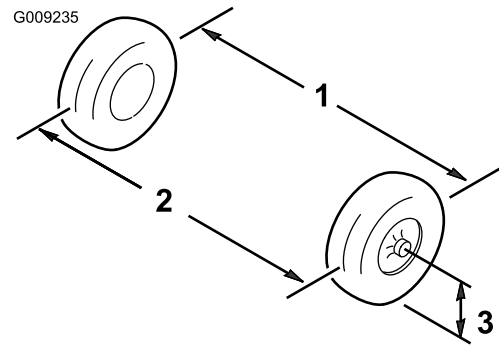


Figure 46

g009235

- Tire center line—back
- Tire center line—front
- Axle center line

- If the measurement does not fall within 0 to +/- 3 mm (0 to +/- 1/8 inch), loosen the jam nuts at the outer end of the tie rods ([Figure 47](#)).

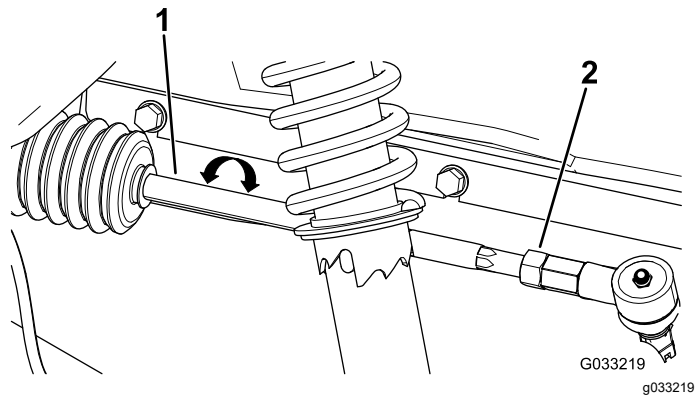


Figure 47

G033219

g033219

- Tie rod
- Jam nut

- Rotate both tie rods to move the front of the tire inward or outward.
- Tighten the tie rod jam nuts when the adjustment is correct.
- Ensure that there is full travel of the steering wheel in both directions.

Checking the Transaxle-Fluid Level

Service Interval: Every 250 hours

Fluid Type: Mobilfluid™ 424

- Remove the fill plug on the transaxle ([Figure 48](#)).

Note: The fluid level should be even with the bottom of the fill plug.

- If the fluid level is low, remove the fill plug and add the specified fluid until it runs out of the hole ([Figure 48](#)).

3. Replace the fill plug and torque it to 27 to 41 N·m (20 to 30 ft-lb).

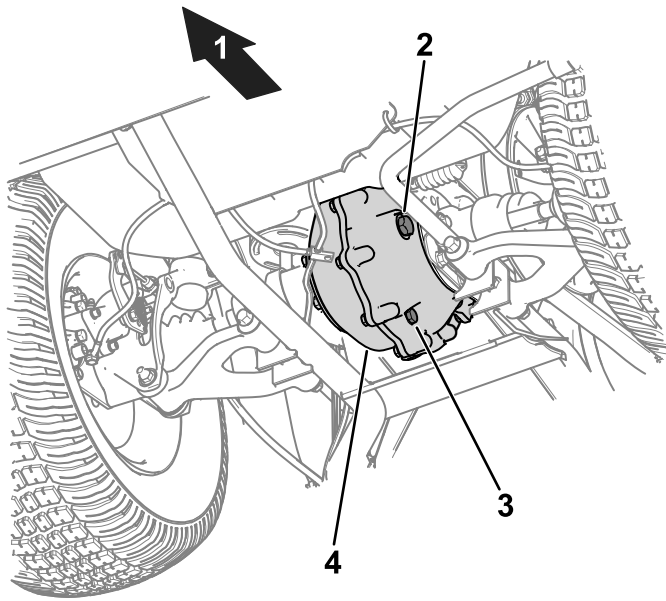


Figure 48

Subframe parts removed for clarity.

- | | |
|---------------|--------------|
| 1. Fill plug | 3. Transaxle |
| 2. Drain plug | |

g405483

Checking the Neutral Gear-Shift Position

Service Interval: Every 100 hours

When performing routine maintenance and/or engine diagnostics, shift the transaxle into NEUTRAL. The machine has a NEUTRAL position on the gear-shift selector, which controls the neutral in the transaxle. Perform the following steps to ensure that the neutral shift lever operates the transaxle neutral correctly:

1. Set the gear-shift selector to the NEUTRAL position.
2. Rotate the secondary clutch (Figure 54) to see if it spins freely in the NEUTRAL position.
3. Set the gear-shift selector to the FORWARD position.
4. Rotate the secondary clutch (Figure 54) to see if it rotates the rear wheels.
5. Set the gear-shift selector to the REVERSE position.
6. Rotate the secondary clutch (Figure 54) to see if it rotates the rear wheels.
7. If any of these tests fail, proceed to [Adjusting the Neutral Gear-Shift Position](#) (page 43).

Changing the Transaxle Fluid

Service Interval: Every 500 hours

Fluid Type: Mobilfluid™ 424

Fluid Capacity: 0.75 L (25 fl oz)

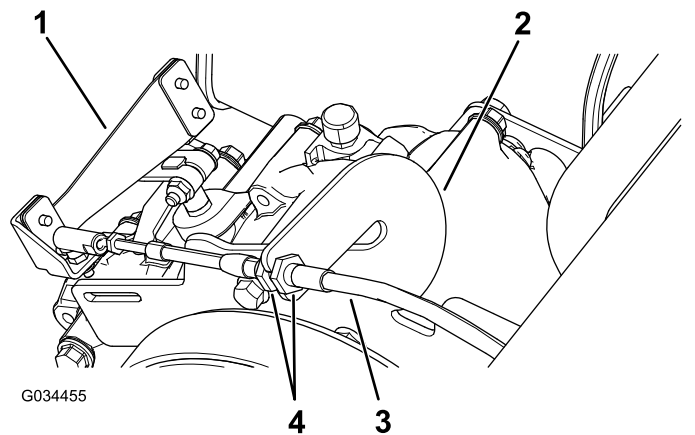
1. Align a drain pan under the drain plug (Figure 48).
 2. Remove the fill plug (Figure 48).
- Note:** Retain the fill plug and seal for installation in step 6.
3. Remove the drain plug, and allow the fluid to drain completely (Figure 48).

Note: Retain the drain plug for installation in step 4.

4. Install the drain plug and torque it to 12 to 19 N·m (9 to 14 ft-lb).
5. Fill the transaxle with the specified fluid and capacity until it is even with the fill hole.
6. Install the fill plug and torque it to 27 to 41 N·m (20 to 30 ft-lb).

Adjusting the Neutral Gear-Shift Position

1. Loosen the jam nuts on the gear-shift cable and adjust them as necessary (Figure 49).



G034455

Figure 49

- | | |
|----------------|---------------------|
| 1. Shift lever | 3. Gear-shift cable |
| 2. Spanner bar | 4. Jam nuts |

g034455

2. Test the gear-shift position by rotating the gear-shift selector to the 3 different positions and check to see if the shift lever (Figure 49) shifts properly when shifting the gears; refer to

Adjusting the Neutral Gear-Shift Position (page 43).

3. Verify that all of the positions are working correctly by repeating the steps in [Checking the Neutral Gear-Shift Position \(page 43\)](#).

Maintaining the Primary Drive Clutch

Service Interval: Every 400 hours/Yearly (whichever comes first)

⚠ CAUTION

The dust in the clutch will become airborne and could damage your eyes or you could inhale it, causing breathing difficulties.

Wear safety goggles and a dust mask or other eye and respiratory protection when performing this procedure.

1. Remove the 3 bolts securing the cover to the clutch, and remove the cover ([Figure 50](#)).

Note: Retain the cover and bolts for installation.

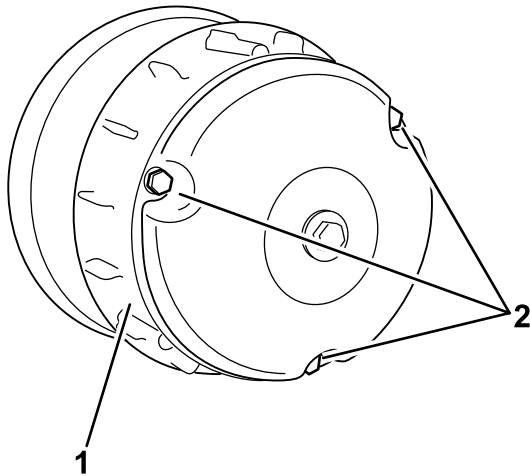


Figure 50

1. Cover
2. Bolts

2. Thoroughly clean the inside of the cover and the inner components of the clutch using compressed air.
3. Install the clutch cover and secure it with the 3 bolts ([Figure 50](#)) that you removed in 1.

Reducing the Top Speed

⚠ CAUTION

The dust in the clutch will become airborne and could damage your eyes or you could inhale it, causing breathing difficulties.

Wear safety goggles and a dust mask or other eye and respiratory protection when performing this procedure.

1. Remove the bolts securing the primary clutch cover as shown in [Figure 51](#).

Important: Use caution when removing the clutch cover; the spring is under compression.

Important: Take note of the X orientation on the clutch covers and clutch assemblies for later installation.

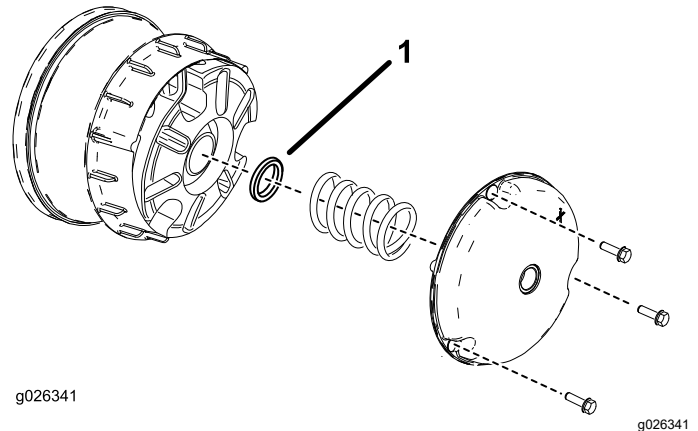


Figure 51

1. Clutch spacer

2. Remove the spring.
3. Add or remove spacers to adjust the top speed. Use the following table to determine the amount of spacers needed.

Spacers	Top Speed
2 (standard)	16 mph (standard)
3	12 mph
4	9 mph
5	6 mph
6	4 mph

Important: Do not operate the machine without at least the thicker spacer in place.

4. Install the spring and clutch cover.

Important: Ensure that the X is placed back in the original location.

5. Torque the bolts to 179 to 228 N·m (132 to 168 in-lb).

Brake Maintenance

Adjusting the Parking Brake

1. Ensure that the parking brake is disengaged.
2. Using jack stands, lift the rear of the machine; refer to [Lifting the Machine \(page 29\)](#).
3. Using 2 wrenches, hold the adjusting post on the caliper in place with 1 wrench, and loosen the jam nut 1/4 turn with the other wrench ([Figure 52](#)).

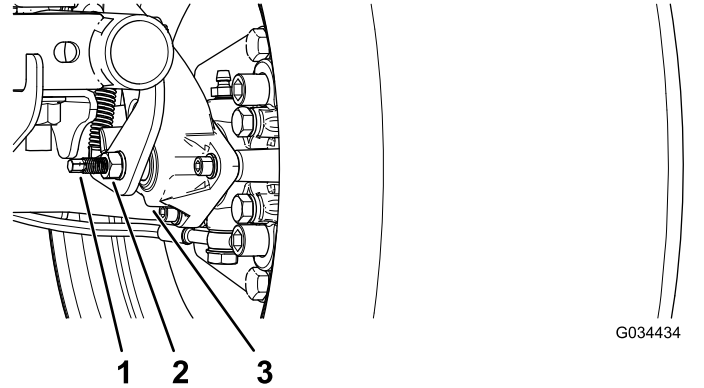


Figure 52

- | | |
|-------------------|------------|
| 1. Adjusting post | 3. Caliper |
| 2. Jam nut | |

4. While holding the adjusting post and the jam nut in place, turn the adjusting post in to tighten ([Figure 52](#)).

Note: Perform this step until you feel drag on the wheel.

5. While holding the adjusting post and the jam nut in place, back off 1/4 turn ([Figure 52](#)).
6. While holding the adjusting post and the jam nut in place, tighten the jam nut ([Figure 52](#)).
7. Perform steps 1 through 6 to the other side.

Checking the Brake-Fluid Level

Service Interval: Before each use or daily—Check the brake-fluid level. Check the brake-fluid level before you start the machine.

Brake-fluid type: DOT 3

1. Remove the hood to access to the master brake cylinder and reservoir (Figure 53).

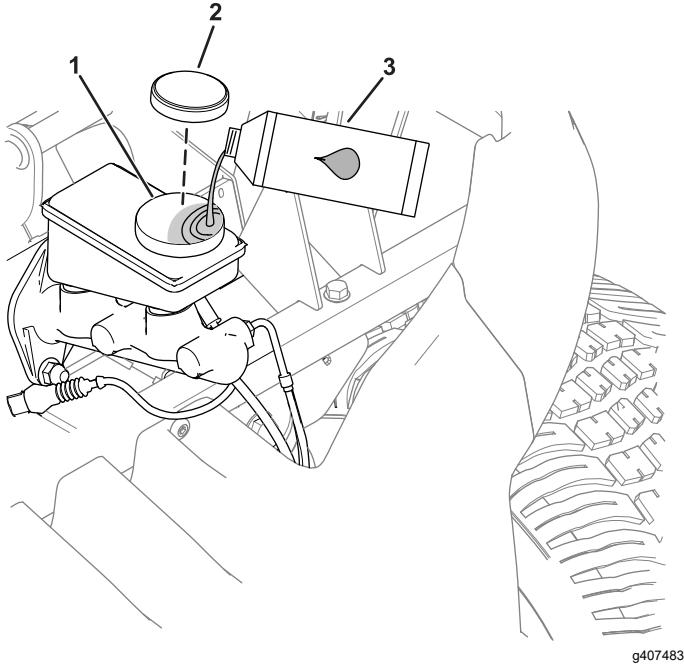


Figure 53

1. Filler neck (reservoir)
2. Reservoir cap
3. DOT 3 brake fluid

2. Look at the outline of the fluid level at the side of the reservoir (Figure 54).

Note: The level should be above the Minimum line.

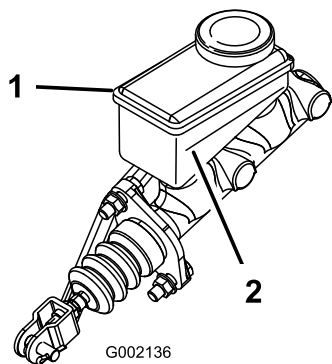


Figure 54

1. Brake-fluid reservoir
2. Minimum line

3. If the fluid level is low, perform the following:
 - A. Clean the area around the reservoir cap and remove the cap (Figure 53).
 - B. Add DOT 3 brake fluid to the reservoir until the fluid level is above the Minimum line (Figure 54).

Note: Do not overfill the reservoir with brake fluid.

 - C. Install the reservoir cap (Figure 53).
4. Close the hood.

Checking the Brakes

Service Interval: Every 100 hours

Important: Brakes are a critical safety component of the machine. Closely inspect them at the recommended service interval to ensure optimum performance and safety.

- Check the brake lining for wear or damage. If the lining (brake pad) thickness is less than 1.6 mm (1/16 inch), replace the brake lining.
- Check the backing plate and other components for signs of excessive wear or deformation. Replace any deformed components.
- Check the brake-fluid level; refer to [Checking the Brake-Fluid Level](#) (page 46).

Replacing the Service and Parking-Brake Pads

Service Interval: Every 400 hours

Contact your authorized Toro distributor to inspect and possibly replace the service and parking-brake pads.

Changing the Brake Fluid

Service Interval: Every 1,000 hours/Every 5 years (whichever comes first)—Change the brake fluid.

Contact your authorized Toro distributor.

Belt Maintenance

Servicing the Drive Belt

Checking the Drive Belt

Service Interval: After the first 8 hours

Every 200 hours

1. Park the machine on a level surface.
2. Shift the transmission into NEUTRAL.
3. Engage the parking brake.
4. Shut off the engine and remove the key.
5. Rotate and inspect the belt ([Figure 55](#)) for signs of excessive wear or damage.

Note: Replace the belt if it is excessively worn or damaged; refer to [Replacing the Drive Belt \(page 48\)](#).

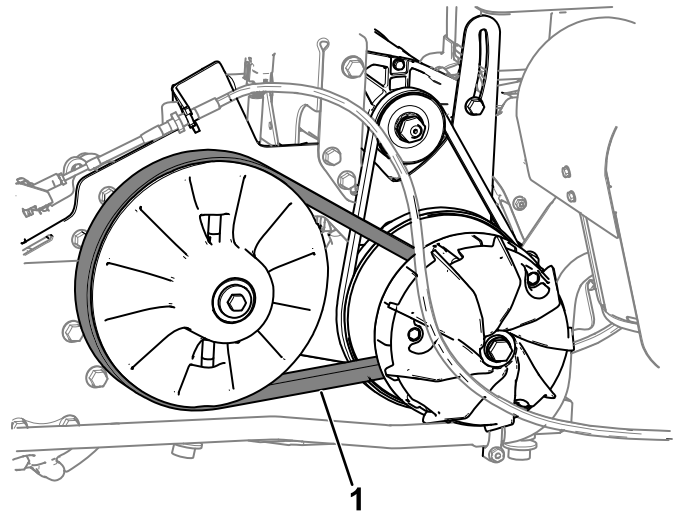


Figure 55

g408488

1. Drive belt

Replacing the Drive Belt

1. Shift the transmission into the NEUTRAL position, engage the parking brake, rotate the key switch to the OFF position, and remove the key.
2. Rotate and route the belt over the secondary clutch (Figure 56).

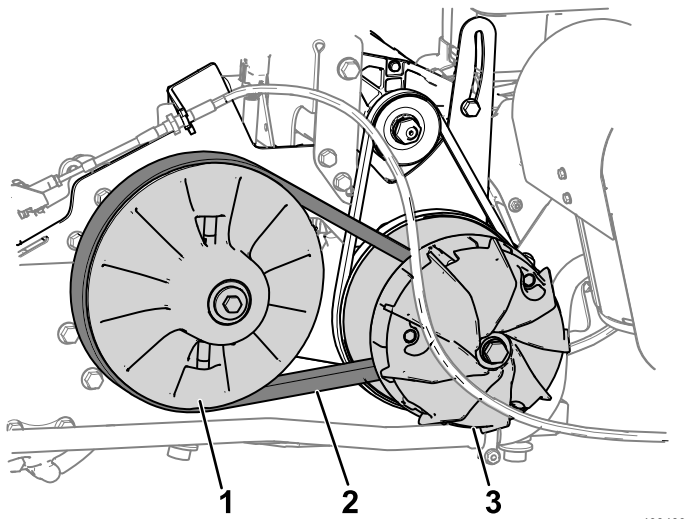


Figure 56

- | | |
|---------------------|-------------------|
| 1. Secondary clutch | 3. Primary clutch |
| 2. Drive belt | |

3. Remove the belt from the primary clutch (Figure 56).

Note: Discard the old belt.

4. Align the new belt over the primary clutch.
5. Rotate and route the belt over the secondary clutch.

Adjusting the Starter-Generator Belt

Service Interval: After the first 8 hours

Every 200 hours

1. Loosen the pivot nut for the starter generator (Figure 57).

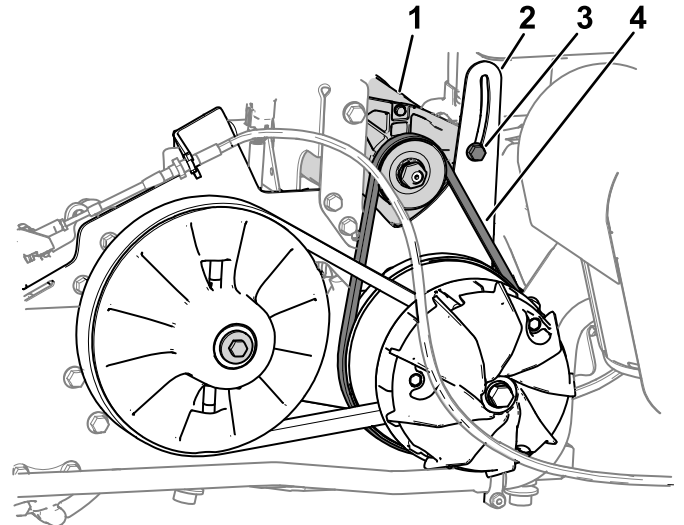


Figure 57

- | | |
|----------------------------|---------------------------|
| 1. Starter generator | 3. Generator-pivot nut |
| 2. Generator-pivot bracket | 4. Starter-generator belt |

2. Align a pry bar upward between the engine mount and starter.
3. Apply downward pressure to the pry bar to rotate the starter generator down in the pivot-bracket slot (Figure 57) until the belt tension only allows 6 mm (1/4 inch) belt deflection with 44 N·m (10 ft-lb) of force.
4. Tighten the pivot nut hand-tight and remove the pry bar.
5. Torque the pivot nut to 23 N·m (17 ft-lb).

Cleaning

Washing the Machine

Wash the machine as needed using water alone or with a mild detergent. You may use a rag when washing the machine.

Important: Do not use brackish or reclaimed water to clean the machine.

Important: Do not use power-washing equipment to wash the machine. Power-washing equipment may damage the electrical system, loosen important decals, or wash away necessary grease at friction points. Avoid excessive use of water near the control panel, engine, and battery.

Important: Do not wash the machine with the engine running. Washing the machine with the engine running may result in internal engine damage.

Storage

Storage Safety

- Shut off the machine, remove the key, and wait for all movement to stop before you leave the operator's position. Allow the machine to cool before adjusting, servicing, cleaning, or storing it.
- The owner is responsible for periodically inspecting the charging and storage areas or facilities and review procedures to ensure that the requirements are being followed.
- Do not operate the machine in an enclosed area without adequate ventilation. Ventilate the maintenance and storage areas for machine to remove flammable vapors (gasses), fumes, and other flammable materials according to applicable fire codes and ordinances.
- Do not store the machine or fuel container where there is an open flame, spark, or pilot light, such as on a water heater or other appliance.

Storing the Machine

Service Interval: Before each use or daily

Before each use or daily

1. Position the machine on a level surface, shift the transmission lever to the P (PARK) position, shut off the engine, and remove the key from the key switch.
2. Clean dirt and grime from the entire machine, including the engine area.

Important: You can wash the machine with mild detergent and water. Do not use high-pressure water to wash the machine. Pressure washing the machine may damage the electrical system or wash away necessary grease at friction points. Avoid excessive use of water, especially near the control panel, lights, engine, and battery.

3. Service the air cleaner; refer to [Servicing the Air Cleaner \(page 32\)](#).
4. Grease the machine; refer to [Greasing the Front Wheel Bearings \(page 29\)](#).
5. Change the engine oil and filter; refer to [Servicing the Engine Oil \(page 34\)](#).
6. Check the tire pressure; refer to [Checking the Tire Pressure \(page 16\)](#).
7. For storage over 30 days, prepare the fuel system as follows:
 - A. Add a petroleum based stabilizer/conditioner to the fuel in the

tank. Do not use an alcohol-based stabilizer (ethanol or methanol).

Important: Do not store fuel containing stabilizer/conditioner longer than the duration recommended by the fuel stabilizer manufacturer.

- B. Run the engine to distribute conditioned fuel through the fuel system for 5 minutes.
 - C. Shut off the engine, allow it to cool, and drain the fuel tank.
 - D. Start the engine and run it until it stops.
 - E. Start and run the engine again until it does not start again.
 - F. Dispose of drained fuel properly. Recycle as per local codes.
- 8. Remove the spark plugs and check their condition; refer to [Servicing the Spark Plug \(page 35\)](#).
 - 9. With the spark plugs removed from the engine, pour 15 ml (2 tablespoons) of engine oil into the spark-plug hole.
 - 10. Use the starter to crank the engine and distribute the engine oil inside the cylinder.
 - 11. Install the spark plugs and tighten each one to the recommended torque; refer to [Checking and Replacing the Spark Plug \(page 35\)](#).

Note: Do not install the spark-plug wires on the spark plugs.

- 12. Check the anti freeze protection and add a 50/50 solution of water and anti freeze as needed for expected minimum temperature in your area.
- 13. Remove the battery from the chassis, and charge it fully; refer to [Servicing the Battery \(page 37\)](#).

Note: Do not connect the battery cables to the battery posts during storage.

Important: The battery must be fully charged to prevent it from freezing and being damaged at temperatures below 0°C (32°F). A fully charged battery maintains its charge for about 50 days at temperatures lower than 4°C (40°F). If the temperatures will be above 4°C (40°F), check the water level in the battery and charge it every 30 days.

- 14. Check and tighten all fasteners. Repair or replace any part that is damaged.
- 15. Paint all scratched or bare metal surfaces with paint available from your authorized Toro distributor.
- 16. Store the machine in a clean, dry garage or storage area.

- 17. Remove the key from the key switch and put it in a safe place that is out of the reach of children.
- 18. Cover the machine to protect it and keep it clean.

California Proposition 65 Warning Information

What is this warning?

You may see a product for sale that has a warning label like the following:



WARNING: Cancer and Reproductive Harm—www.p65Warnings.ca.gov.

What is Prop 65?

Prop 65 applies to any company operating in California, selling products in California, or manufacturing products that may be sold in or brought into California. It mandates that the Governor of California maintain and publish a list of chemicals known to cause cancer, birth defects, and/or other reproductive harm. The list, which is updated annually, includes hundreds of chemicals found in many everyday items. The purpose of Prop 65 is to inform the public about exposure to these chemicals.

Prop 65 does not ban the sale of products containing these chemicals but instead requires warnings on any product, product packaging, or literature with the product. Moreover, a Prop 65 warning does not mean that a product is in violation of any product safety standards or requirements. In fact, the California government has clarified that a Prop 65 warning "is not the same as a regulatory decision that a product is 'safe' or 'unsafe.'" Many of these chemicals have been used in everyday products for years without documented harm. For more information, go to <https://oag.ca.gov/prop65/faqs-view-all>.

A Prop 65 warning means that a company has either (1) evaluated the exposure and has concluded that it exceeds the "no significant risk level"; or (2) has chosen to provide a warning based on its understanding about the presence of a listed chemical without attempting to evaluate the exposure.

Does this law apply everywhere?

Prop 65 warnings are required under California law only. These warnings are seen throughout California in a wide range of settings, including but not limited to restaurants, grocery stores, hotels, schools, and hospitals, and on a wide variety of products. Additionally, some online and mail order retailers provide Prop 65 warnings on their websites or in catalogs.

How do the California warnings compare to federal limits?

Prop 65 standards are often more stringent than federal and international standards. There are various substances that require a Prop 65 warning at levels that are far lower than federal action limits. For example, the Prop 65 standard for warnings for lead is 0.5 µg/day, which is well below the federal and international standards.

Why don't all similar products carry the warning?

- Products sold in California require Prop 65 labelling while similar products sold elsewhere do not.
- A company involved in a Prop 65 lawsuit reaching a settlement may be required to use Prop 65 warnings for its products, but other companies making similar products may have no such requirement.
- The enforcement of Prop 65 is inconsistent.
- Companies may elect not to provide warnings because they conclude that they are not required to do so under Prop 65; a lack of warnings for a product does not mean that the product is free of listed chemicals at similar levels.

Why does Toro include this warning?

Toro has chosen to provide consumers with as much information as possible so that they can make informed decisions about the products they buy and use. Toro provides warnings in certain cases based on its knowledge of the presence of one or more listed chemicals without evaluating the level of exposure, as not all the listed chemicals provide exposure limit requirements. While the exposure from Toro products may be negligible or well within the "no significant risk" range, out of an abundance of caution, Toro has elected to provide the Prop 65 warnings. Moreover, if Toro does not provide these warnings, it could be sued by the State of California or by private parties seeking to enforce Prop 65 and subject to substantial penalties.



Count on it.