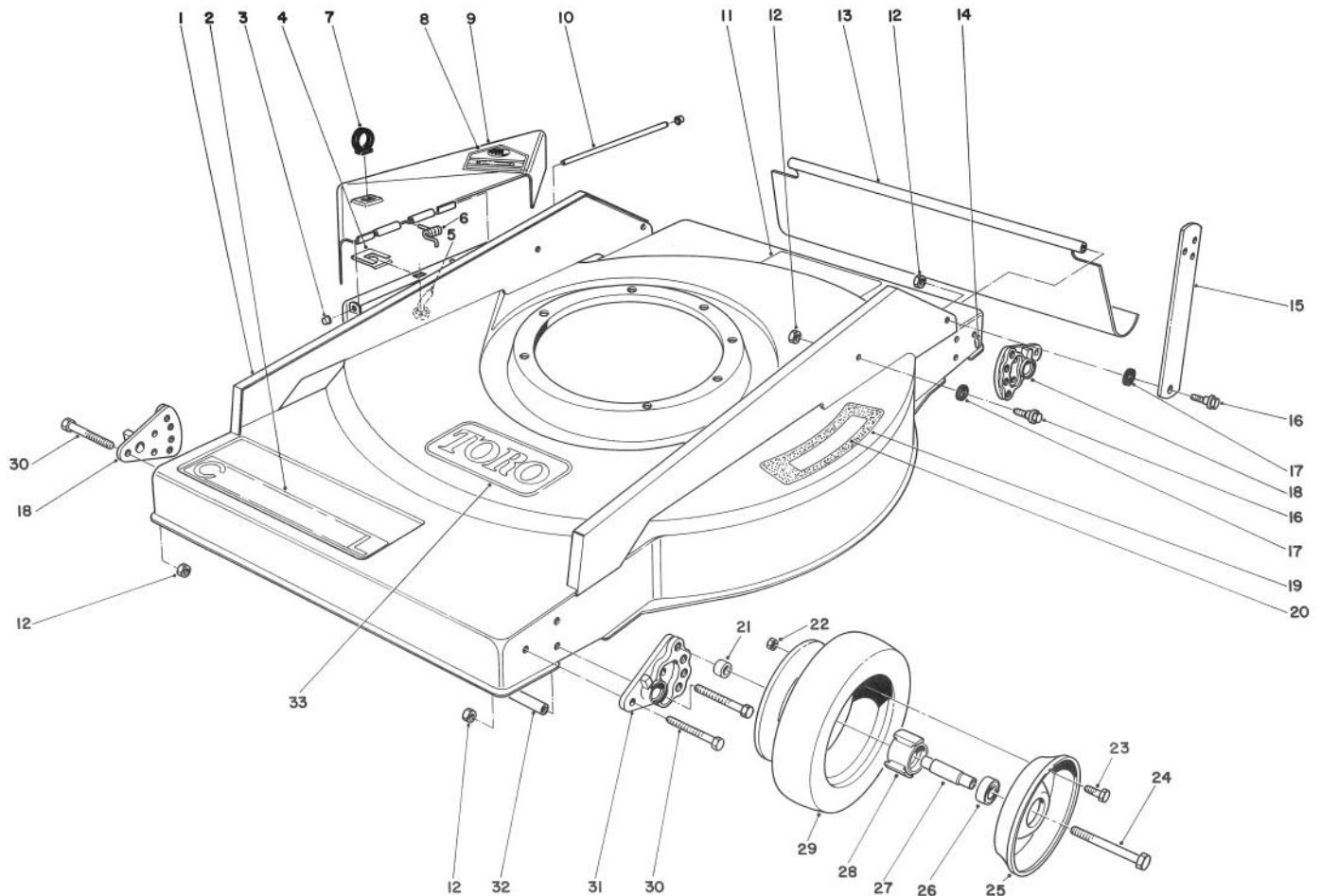




MODEL NO. 22005-5000001 & UP

PARTS CATALOG

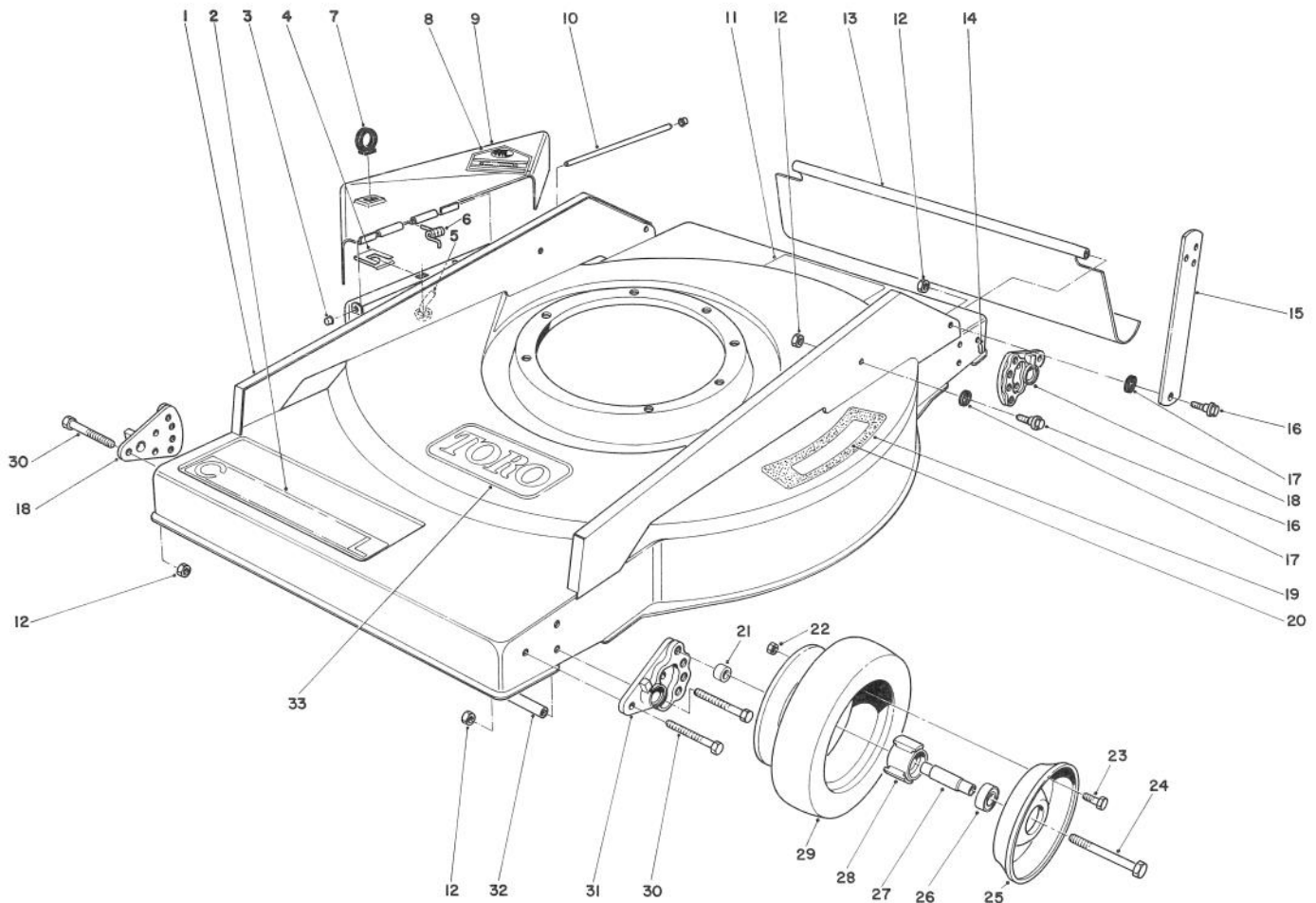
21" H.P. COMMERCIAL SIDE DISCHARGE



MOWER HOUSING ASSEMBLY

Ref. No.	Part No.	Description	No. Used
1	11-7079	Housing (Incl. Ref. #2, 19 & 20)	1
2	49-9090	Decal — Commercial	1
3	32112-1	Push Nut	2
4	28-3250	Clip — Chute Pin	1
5	28-3260	Pin — Bag Chute	1
6	28-1560	Spring — Torsion	1
7	28-1430	Lift Loop — Deflector	1
8	39-5770	Decal — Danger	1
9	11-8579	Deflector (Incl. Ref. #8)	1
10	36-6350	Rod — Deflector Pivot	1
11	29-4720	Decal — Safety Instructions	1
12	3296-29	Nut — Lock	12
13	40-6690	Shield — Rear Safety	1
14	33-3204	Rod — Shield	1

Ref. No.	Part No.	Description	No. Used
15	39-5960	Strap — Handle	2
16	5-2490	Screw — Shoulder	4
17	27-6510	Spacer — Handle Latch	4
18	49-8910	Wheel Quadrant	2
19	37-0030	Pad — Step	1
20	36-2820	Decal — Step Pad	1
21	52-2480	Spacer — Wheel	4
22	3296-56	Locknut	16
23	3234-26	Capscrew	16
24	323-12	Capscrew	4
25	53-7780	Plate — Wheel Half	8
26	52-2450	Bearing	8
27	52-2440	Spacer — Bearing	4
28	52-2410	Hub — Bearing Support	4

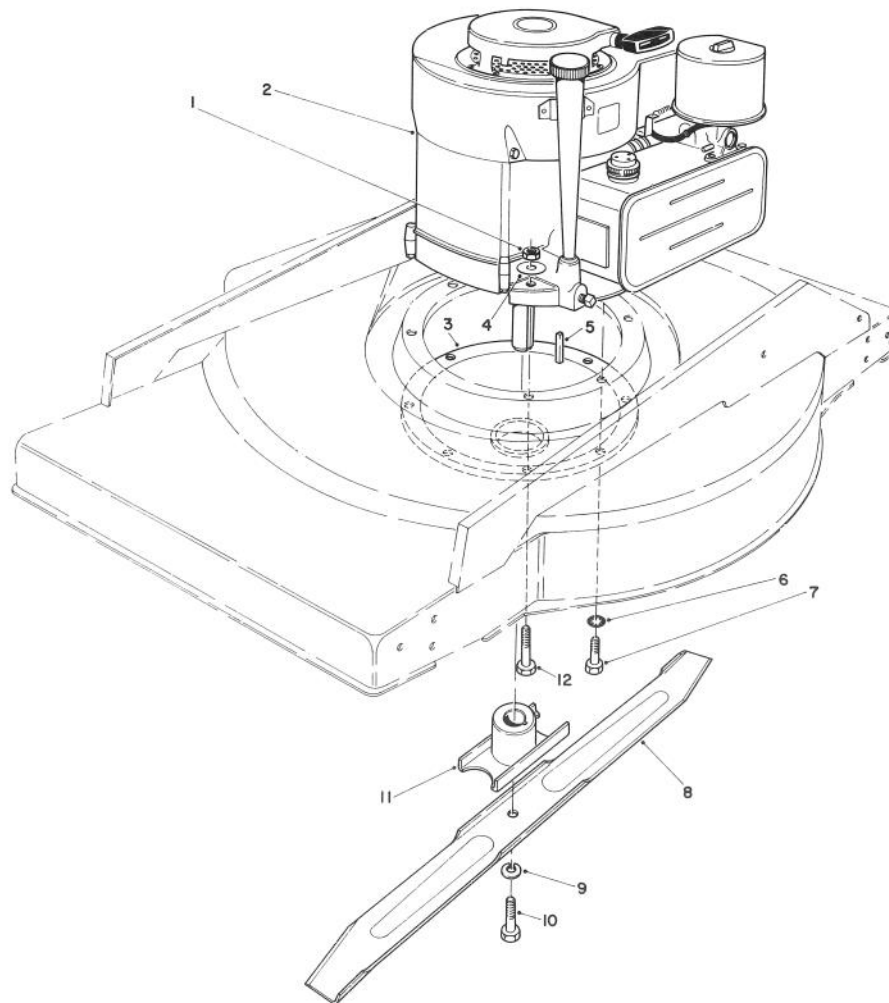


MOWER HOUSING ASSEMBLY (Continued)

Ref. No.	Part No.	Description	No. Used
29	53-7740	Tire	4
30	322-5	Capscrew	12
31	49-8900	Wheel Quadrant	2
32	40-6710	Rod — Tie	2

Ref. No.	Part No.	Description	No. Used
33	44-0510	Decal — Toro	1
*	53-7720	Wheel & Tire Assembly (Incl. Ref. #22, 23 & 25-29)	4

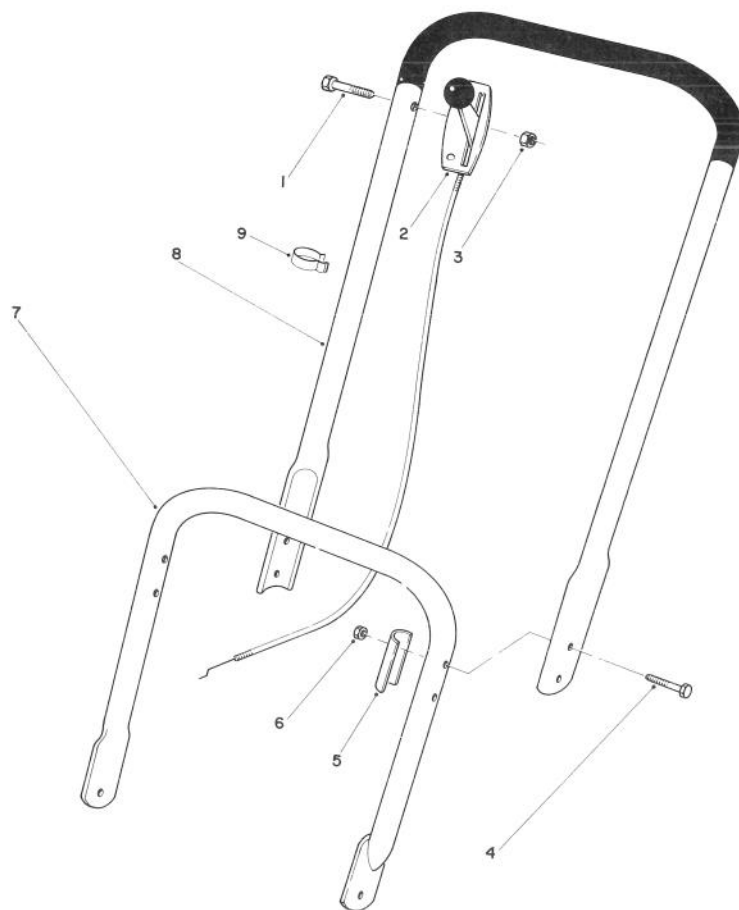
*Not Illustrated



ENGINE ASSEMBLY

Ref. No.	Part No.	Description	No. Used
1	32152-1	Nut — Lock	4
2	221-722	Engine	1
3	48-2591	Crankshaft Protector Assy.	1
4	3256-56	Washer — Plain Flat	4
5	5-0930	Key — Square	1
6	3254-6	Washer — Lock Internal Tooth	3
7	32144-11	Screw — Thread Forming Hex Hd.	3

Ref. No.	Part No.	Description	No. Used
8	20-2720	Blade — 21"	1
9	3253-22	Washer — Lock	1
10	23-0080	Screw — Blade	1
11	48-2700	Blade — Retainer	1
12	322-7	Screw — Cap Hex Hd.	4

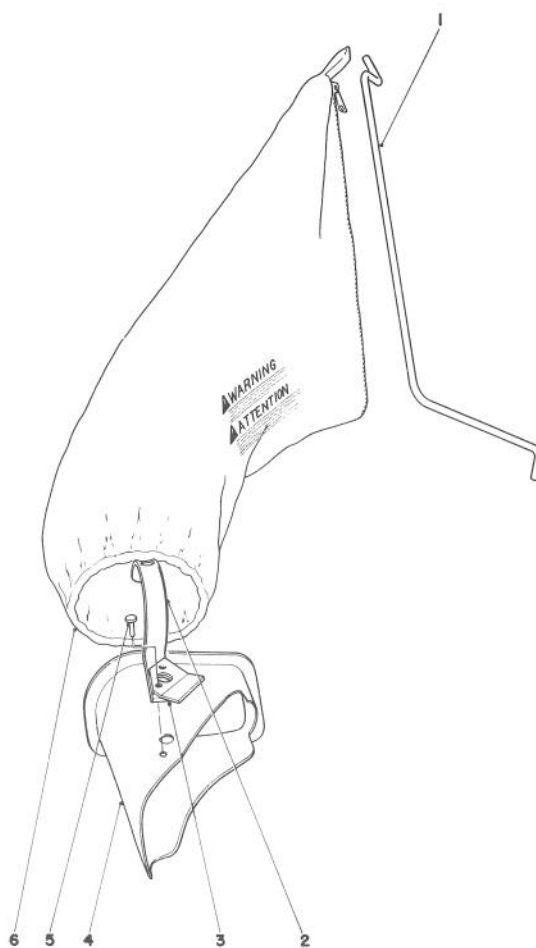


HANDLE ASSEMBLY

Ref. No.	Part No.	Description	No. Used
1	321-10	Screw — Cap Hex Hd.	1
2	49-9070	Control — Throttle	1
3	3296-42	Nut — Lock	1
4	322-9	Screw — Cap Hex Hd.	4
5	39-5950	Brace — Handle	2

Ref. No.	Part No.	Description	No. Used
6	3296-29	Nut — Lock	4
7	39-0180	Handle — Lower	1
8	39-0190	Handle — Upper	1
9	218-466	Clip — Bowden	1
*	11-7119	Loose Parts	1

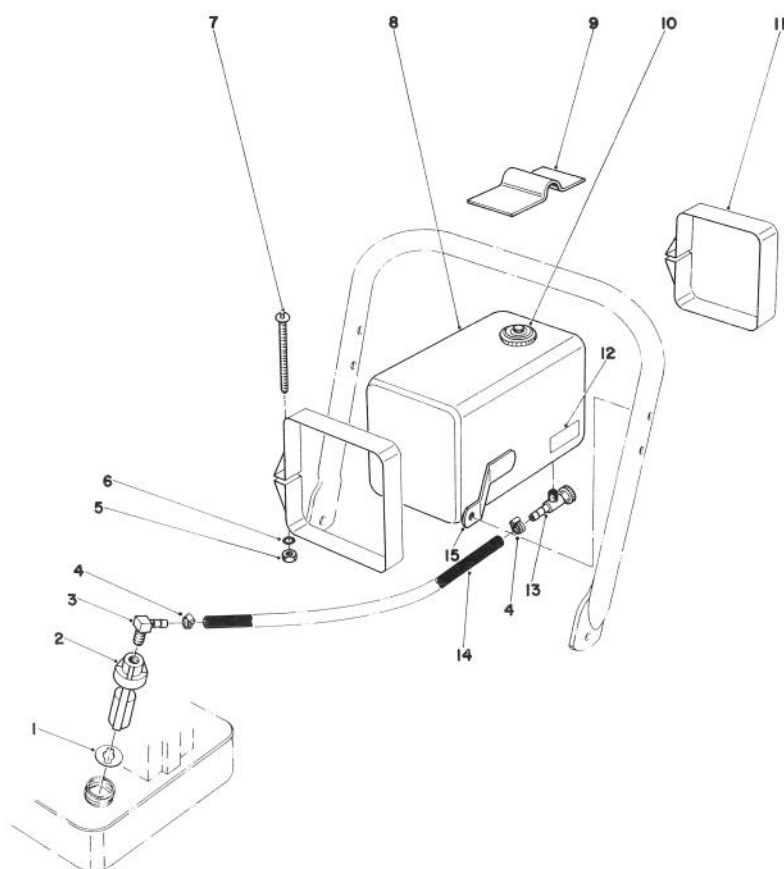
*Not Illustrated



GRASS BAGGING KIT—NO. 40-5130 (Optional)

Ref. No.	Part No.	Description	No. Used
1	40-4580	Bag Rod	1
2	28-4340	Handle Bag Chute	1
3	40-4570	Stop Deflector	1

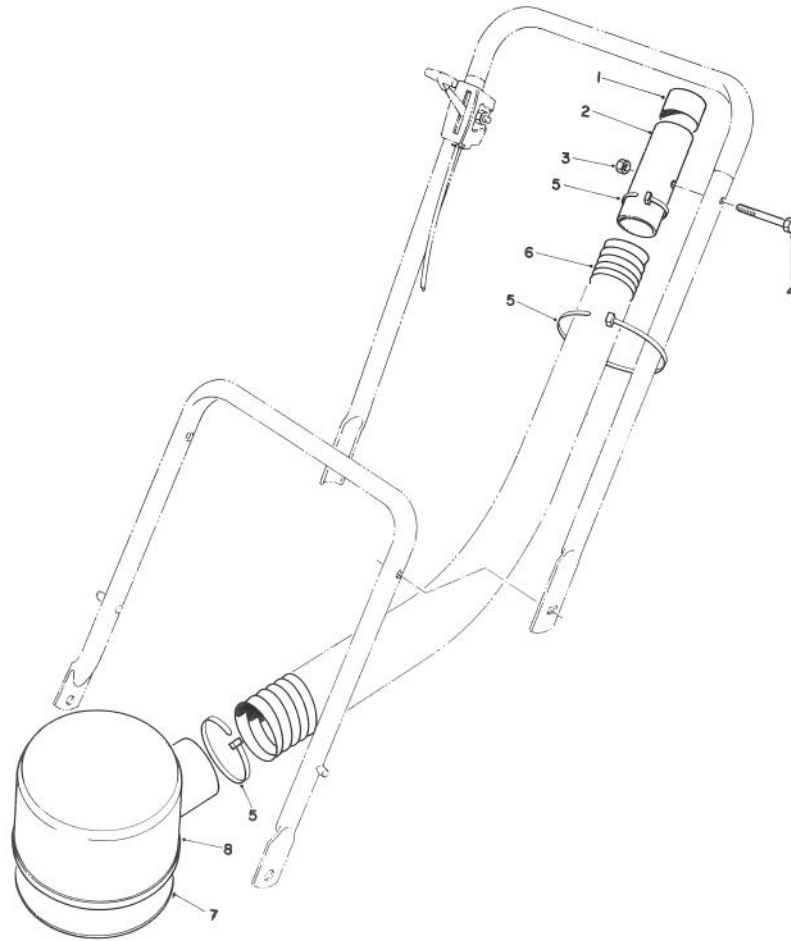
Ref. No.	Part No.	Description	No. Used
4	38-6061	Grass Chute (Incl. Ref. #2 & 5)	1
5	3295-37	Rivet — Semi Tubular	2
6	6-0929	Grass Bag	1



REMOTE FUEL TANK KIT NO. 39-6880 (Optional)

Ref. No.	Part No.	Description	No. Used
1	28-4850	Gasket	1
2	28-4840	Fuel Control Valve (Incl. Ref. #1)	1
3	304-75	Elbow Fitting	1
4	2412-36	Clamp Hose	2
5	3217-5	Nut	2
6	3253-3	Lockwasher	2
7	3250-21	Pan Head Screw	2

Ref. No.	Part No.	Description	No. Used
8	222-14	Fuel Tank (Incl. Ref. #10)	1
9	39-6960	Tank Bracket	1
10	222-15	Fuel Cap	1
11	39-0570	Tank Strap	2
12	28-6910	Decal — Caution	1
13	304-71	Fuel Valve & Filter Screen	1
14	39-6930	Fuel Line	1
15	39-5940	Tank Brace	1

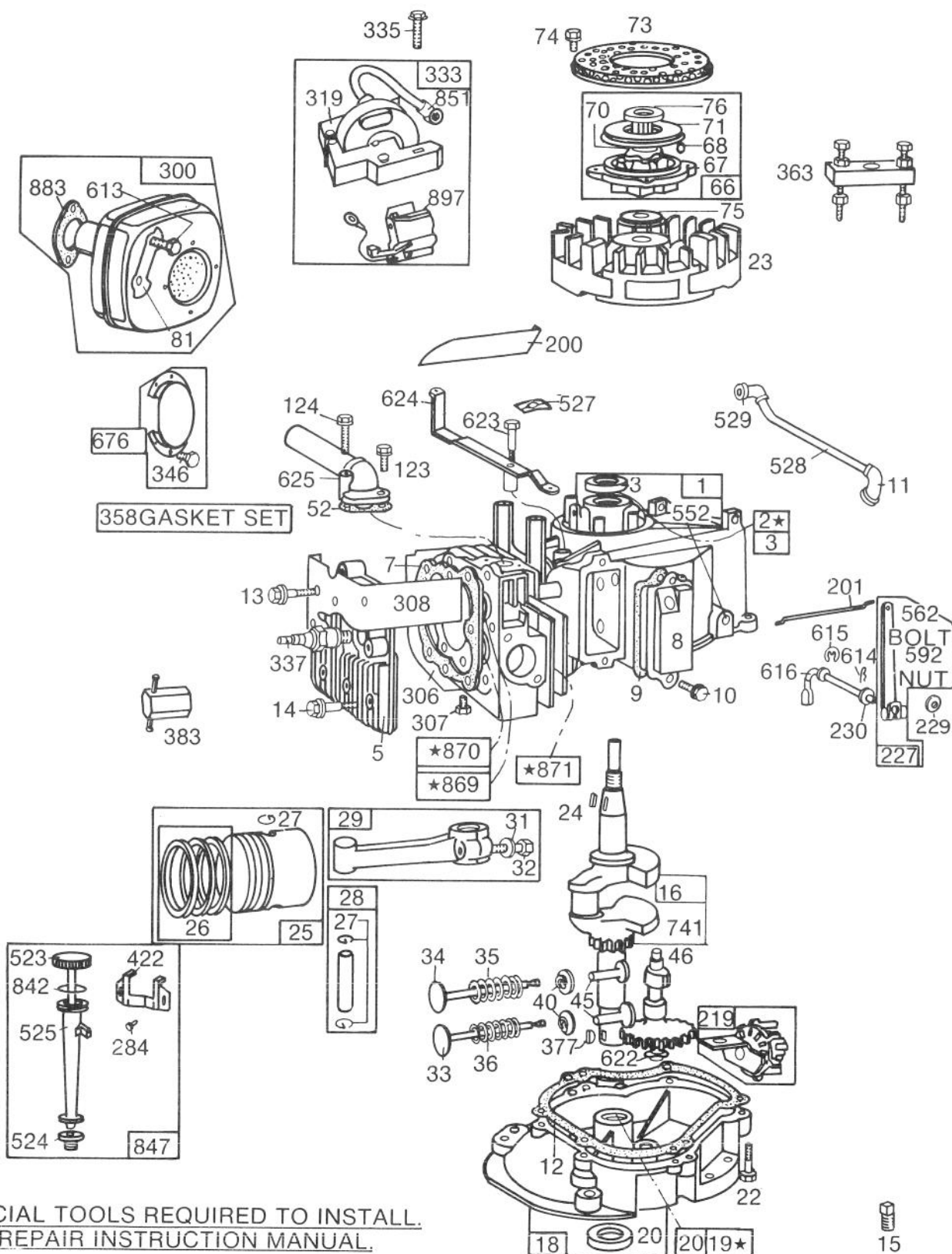


REMOTE AIR CLEANER KIT NO. 43-6940 (Optional)

Ref. No.	Part No.	Description	No. Used
1	2410-53	Caplug	1
2	39-7790	Hose Tip Air Cleaner	1
3	32152-4	Locknut	1
4	321-9	Capscrew	1

Ref. No.	Part No.	Description	No. Used
5	3290-379	Cable Tie	3
6	39-9760	Hose Air Cleaner	1
7	39-6820	Base Air Cleaner	1
8	39-6840	Air Cleaner Cover	1

ENGINE BRIGGS & STRATTON MODEL NO. 130902 TYPE 1200-01

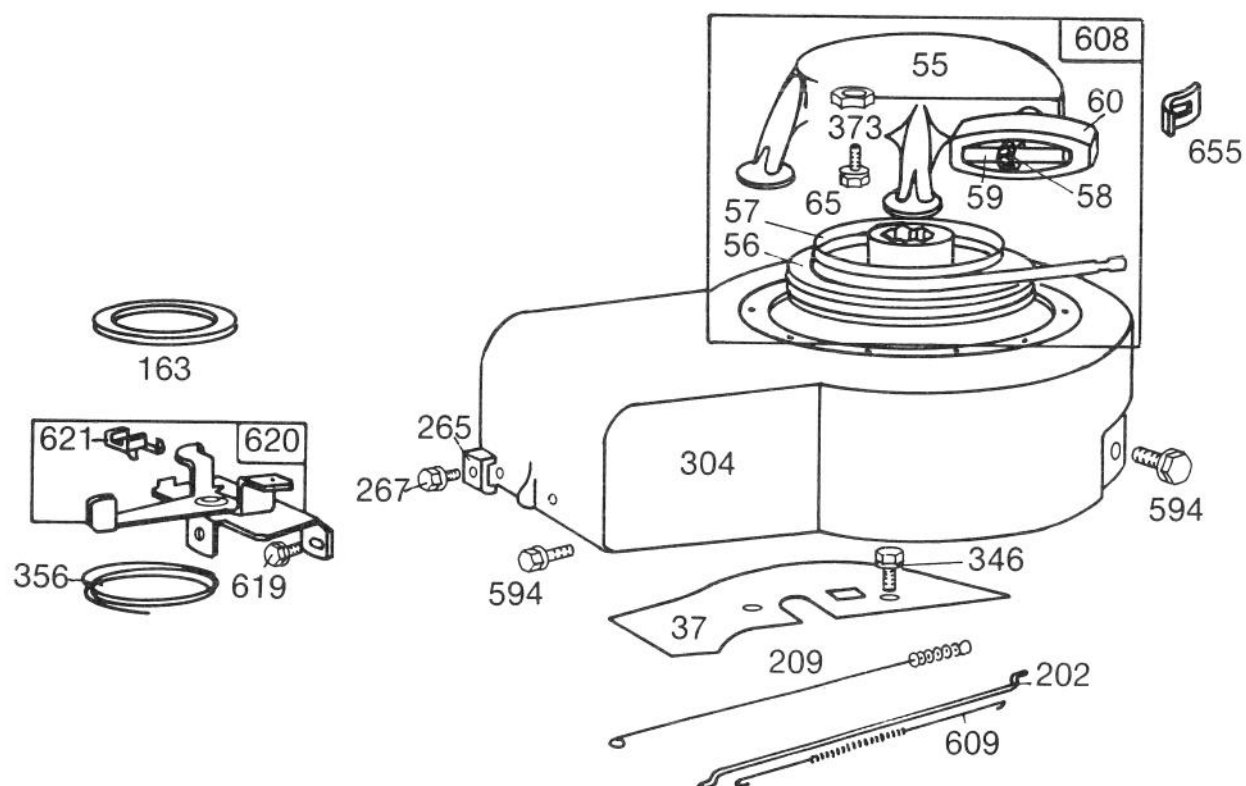


ENGINE BRIGGS & STRATTON MODEL NO. 130902 TYPE 1200-01

Ref. No.	Part No.	Description	No. Used
1	396006	Cylinder Assembly	1
2	297565	Bushing — Cylinder Note: Requires special tools for installation.	1
3	299819	Seal — Oil	1
5	211542	Head — Cylinder	1
7	*270383	Gasket — Cylinder Head	1
8	297261	Breather — Valve Chamber	1
9	*27549	Gasket — Valve Cover	1
10	93394	Screw — Breather Mtg.	1
11	67738	Grommet — Breather	1
12	*270069	Gasket — Crankcase — .015" thick (Standard)	1
	*270122	Gasket — Crankcase — .005" thick	1
	*270123	Gasket — Crankcase — .009" thick	1
13	93368	Screw — Cylinder Head (2-3/32" long)	1
14	93369	Screw — Cylinder Head (2-15/32" long)	1
15	91084	Plug — Oil Drain	1
16	397481	Crankshaft Note: To replace crankshaft gear pin order part #230978	1
18	297587	Sump — Oil	1
19	297604	Bushing — Oil Sump Note: Requires special tools for installation.	1
20	391485	Seal — Oil	1
22	93032	Screw — Sump Mtg.	1
23	297229	Flywheel — Magneto	1
24	222698	Key — Flywheel	1
25	298904	Piston Assembly — Standard	1
	298905	Piston Assy. — .010" O.S.	1
	298906	Piston Assy. — .020" O.S.	1
	298907	Piston Assy. — .030" O.S.	1
		Piston Ring Sets: Note: For Chrome Piston	
		Ring Set — Std. Size — Order Part No. 299742.	
26	298982	Ring Set — Std. Piston	1
	298983	Ring Set — .010" O.S. Piston	1
	298984	Ring Set — .020" O.S. Piston	1
	298985	Ring Set — .030" O.S. Piston	1
27	26026	Lock — Piston Pin	1
28	298909	Pin Assy. — Piston — Std.	1
	298908	Pin Assy. — Piston — .005" O.S.	1
29	299429	Rod Assy. — Connecting Note: For Connecting Rod with .020" undersize Crank-pin Bore — Order No. 390459.	1
31	222282	Washer — Flat (One for each Screw)	1
32	92296	Screw — Connecting Rod	1
33	211119	Valve — Exhaust	1
34	261044	Valve — Intake	1
35	260552	Spring — Intake Valve	1
36	26478	Spring — Exhaust Valve	1
40	93312	Retainer — Valve Spring	1
45	260642	Tappet — Valve	1
46	211117	Gear — Cam	1
52	*270070	Gasket — Intake Elbow Mtg.	1
66	394558	Clutch Assy. — Rewind Starter	1
67	394897	Housing — Starter Clutch	1
68	63770	Ball — Clutch	1

Ref. No.	Part No.	Description	No. Used
70	298436	Ratchet — Starter Clutch	1
71	221653	Washer — Clutch Retainer	1
73	221923	Screen — Rewind Starter	1
74	93490	Screw — Rotating Screen Mtg.	1
75	220865	Washer — Spring	1
76	68238	Washer — Ratchet Sealing	1
81	222263	Lock — Muffler Screw	1
123	93512	Screw — Intake Elbow Mtg.	1
124	93367	Screw — Intake Elbow Mtg.	1
200	221480	Guide — Air	1
201	260649	Link — Governor	1
219	297249	Oil Slinger Gear, Governor and Bracket	1
227	391967	Lever Assy. — Governor	1
229	220680	Washer — Governor Lever	1
230	222450	Washer — Governor Crank	1
284	93410	Screw — Clamp Mtg.	1
300	393615	Muffler — Exhaust (Lo-Tone)	1
306	221484	Shield — Cylinder	1
307	93042	Screw	1
308	221452	Cover — Cylinder Head	1
319	395490	Armature Assembly (Less Trigger Coil)	1
333	395491	Armature Group	1
335	93414	Screw — Armature Mtg.	1
337	293918	Plug — Spark (1-1/2" High — 37-42 M.M.) (Resistor Type)	1
346	93705	Screw — Hex Hd.	1
358	297616	Gasket Set	1
363	19069	Flywheel Puller	1
377	93065	Key — Woodruff No. 6	1
383	89838	Wrench — Spark Plug	1
422	222576	Clamp — Oil Filler Tube	1
523	391840	Cap with Dipstick (Screw Cap)	1
524	68838	Seal — Oil Filler Tube to Sump	1
525	280133	Tube — Oil Filler to Sump (For Plastic Screw Cap Dipstick)	1
527	93376	Clip — Breather Pipe	1
528	230717	Tube — Breather	1
529	67608	Grommet — Breather Tube	1
552	231078	Bushing — Governor Shaft	1
562	92613	Bolt — Governor Lever	1
592	231082	Nut — Hex	1
613	93935	Shoulder Screw — Hex Hd.	1
614	93306	Cotter — Hair Pin	1
615	93307	Retainer — E-Ring	1
616	231076	Crank — Governor	1
622	260676	Washer — Spring (Used between cam gear boss and oil slinger bracket)	1
623	93838	Screw — Shoulder	1
624	297252	Lever — Linkage	1
625	297254	Elbow and Tube — Intake	1
676	393757	Deflector — Exhaust (Side Outlet)	1
741	261696	Gear — Timing	1
842	270920	Seal — Filler Cap	1
847	392066	Dipstick and Tube Assy. (Plastic Screw Cap)	1
851	221798	Cable Terminal — Ignition	1
869	211787	Seat — Intake Valve (Std.)	1
870	211172	Seat — Exhaust Valve (Std.)	1
871	63709	Guide — Exhaust Valve	1
883	270918	Gasket — Muffler	1
897	394970	Trigger Coil	1

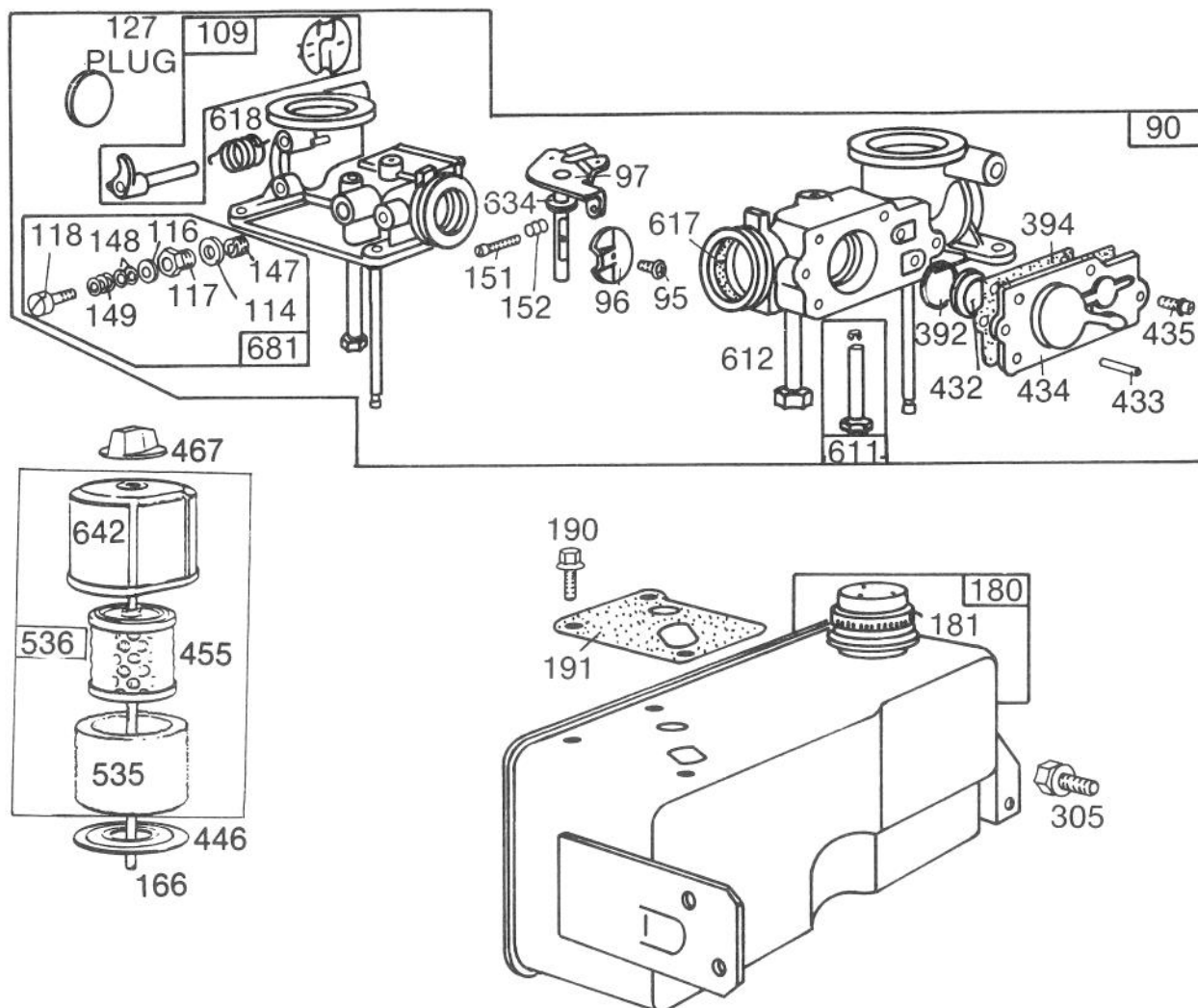
*Included in Gasket Set — Part No. 297616.



ENGINE BRIGGS & STRATTON MODEL NO. 130902 TYPE 1200-01 (Continued)

Ref. No.	Part No.	Description	No. Used
37	222443	Guard — Flywheel	1
55	299431	Housing — Rewind Starter	1
56	295871	Pulley — Rewind Starter	1
57	294303	Spring — Rewind Starter	1
58	66884	Rope — Rewind Starter — 63" long	1
		Note: If longer Rope is required, order Rope No. 66894 and cut to required length.	
59	230228	Pin — Starter Rope	1
60	66728	Grip — Starter Rope	1
65	93067	Screw — Stamped Steel Rewind Starter Housing Mtg.	1
163	271139	Gasket — Air Cleaner	1
202	260654	Link — Throttle	1
209	261047	Spring — Governor	1

Ref. No.	Part No.	Description	No. Used
265	22372	Clamp — Casing	1
267	93469	Screw — Clamp Mtg.	1
304	392277	Housing — Blower	1
346	93705	Screw Hex Hd.	1
356	298693	Wire — Ground (30" Long Cut to Suit)	1
373	92987	Nut — Hex	4
594	93559	Screw — Blower Housing Mtg.	1
608	390463	Starter Assy. — Rewind	1
609	260029	Spring — Throttle Link	1
619	93380	Screw — Control Plate Mtg.	1
620	391091	Plate Assy. — Remote Carburetor Control	1
621	297472	Switch — Stop	1
655	222598	Anchor — Spring	1



ENGINE BRIGGS & STRATTON MODEL NO. 130902 TYPE 1200-01 (Continued)

Ref. No.	Part No.	Description	No. Used
90	299448	Carburetor Assembly	1
95	93499	Screw — Throttle Valve to Shaft	1
96	211237	Valve — Throttle	1
97	299692	Shaft and Lever — Throttle	1
109	390076	Shaft, Lever and Valve — Choke	1
114	66594	Gasket — Needle Valve Nut	1
116	65978	Packing — Needle Valve	1
117	230590	Nut — Needle Valve	1
118	23433	Valve — Needle	1
127	22831	Plug — Welch	1
147	230591	Seat — Needle Valve	1
148	22235	Washer — Needle Valve	2
149	26336	Spring — Needle Valve	1
151	93527	Screw — Machine, Rd. Hd.	1
152	260575	Spring — Throttle Adjustment	1
166	231332	Stud — Air Cleaner	1
180	297257	Tank Assembly — Fuel	1
181	394818	Cap — Fuel Tank	1
190	93440	Screw — Fuel Tank Mtg.	1
191	*270073	Gasket — Fuel Tank Mtg.	1

Ref. No.	Part No.	Description	No. Used
305	93158	Screw — Tank Bracket Mtg.	1
392	260455	Spring — Fuel Pump Diaphragm	1
394	270026	Diaphragm	1
432	221377	Cap — Spring	1
433	93265	Pin — Diaphragm Cover	1
434	210959	Cover — Diaphragm	1
435	93141	Screw — Diaphragm Cover	1
455	396424	Cartridge — Air Cleaner	1
446	222844	Base — Air Cleaner	1
467	212706	Knob — Air Cleaner	1
535	271466	Element — Air Cleaner	1
536	397294	Cleaner Assembly — Air	1
611	391813	Fuel Pipe and Clip Assy.	1
612	296811	Pipe — Fuel (Plastic)	1
617	280393	Seal — Intake Elbow Tube	1
618	260648	Spring — Choke Return	1
634	270167	Washer — Throttle Shaft (Felt)	1
642	223199	Cover — Air Cleaner	1
681	299060	Needle Valve Kit	1

*Included in Gasket Set — Part No. 297616.

PRODUCT CHANGES

In an effort to make improvements available to TORO owners as quickly as possible, minor changes are incorporated into Toro's products from time to time that do not become immediately shown in the Parts Catalog. If such a change apparently has been made in your unit, which is not reflected in your manual, see your TORO Distributor or his Authorized TORO Service Dealer for information and part numbers.

IDENTIFICATION AND ORDERING

Model and Serial Numbers

The 21" H.P. Commercial Side Discharge has two identification numbers: a model number and a serial number. The two numbers are stamped on a plate which is located on Housing between the rear wheels. In any correspondence concerning the 21" H.P. Commercial Side Discharge, supply model and serial numbers to assure that correct information and replacement parts are obtained.

To order replacement parts from an Authorized TORO Distributor, supply the following information:

1. Model and serial numbers of the 21" H.P. Commercial Side Discharge.
2. Part number, description, and quantity of part(s) desired.

NOTE: do not order by reference number if a parts catalog is being used; use the PART NUMBER.

The Toro Promise

A ONE YEAR LIMITED WARRANTY Model 22005 Commercial Side Discharge

The Toro Company promises to repair your TORO Product if defective in materials or workmanship. The following time periods from the date of purchase apply:

Commercial Products 1 Year

The costs of parts and labor are included, but the customer pays the transportation costs on walk rotary mowers.

If you feel your TORO product is defective and wish to rely on The Toro Promise, the following procedure is recommended:

1. Contact your Authorized TORO Distributor or Commercial Dealer (the Yellow Pages of your telephone directory is a good reference source).
2. The TORO Distributor or Commercial Dealer will advise you on the arrangements that can be made to inspect and repair your product.
3. The TORO Distributor or Commercial Dealer will inspect the product and advise you whether the product is defective and, if so, make all repairs necessary to correct the defect without an extra charge to you.

If for any reason you are dissatisfied with the distributor's analysis of the defect or the service performed, you may contact us.

Write:

TORO Commercial Products Service Department
8111 Lyndale Avenue South
Minneapolis, Minnesota 55420

The above remedy of product defects through repair by an Authorized TORO Distributor or Commercial Dealer is the purchaser's sole remedy for any defect.

THERE IS NO OTHER EXPRESS WARRANTY. ALL IMPLIED WARRANTIES OF MERCHANTABILITY AND FITNESS FOR USE ARE LIMITED TO THE DURATION OF THE EXPRESS WARRANTY.

Some states do not allow limitations on how long an implied warranty lasts, so the above limitation may not apply to you.

This Warranty applies only to parts or components which are defective and does not cover repairs necessary due to normal wear, misuse, accidents, or lack of proper maintenance. Regular, routine maintenance of the unit to keep it in proper condition is the responsibility of the owner.

All warranty repairs reimbursable under the Toro Promise must be performed by an Authorized TORO Commercial Dealer or Distributor using Toro approved replacement parts.

Repairs or attempted repairs by anyone other than an Authorized TORO Distributor or Commercial Dealer are not reimbursable under the Toro Promise. In addition, these unauthorized repair attempts may result in additional malfunctions, the correction of which is not covered by warranty.

THE TORO COMPANY IS NOT LIABLE FOR INDIRECT, INCIDENTAL OR CONSEQUENTIAL DAMAGES IN CONNECTION WITH THE USE OF THE PRODUCT INCLUDING ANY COST OR EXPENSE OF PROVIDING SUBSTITUTE EQUIPMENT OR SERVICE DURING PERIODS OF MALFUNCTION OR NON-USE.

Some states do not allow the exclusion or limitation of incidental or consequential damages, so the above limitation or exclusion may not apply to you.

This warranty gives you specific legal rights, and you may also have other rights which vary from state to state.