



Roller Seal Replacement Kit

Greensmaster DPA Cutting Units

Part No. 107-1594

Form No. 3350-953

Installation Instructions

1. Remove the roller from the cutting unit.
2. Remove the nut, seal and old bearing from each end of the roller.

Note: Make sure the seating surface of each nut is not damaged. If nut is damaged, replace with Toro Part No. 106-6939.

Note: To ease the removal of the roller nuts, thread a bolt and jam nut into each end of roller shaft.

3. Install a new bearing, a black assembly washer and old nut onto each end of the roller (Fig. 1).

Note: If new nuts are to be used, use the old nuts, if possible, for installing the bearings and seals. This will preserve the patch lock feature in the nut. Use the new nuts only after the new bearings and seals are installed.

4. Tighten the nuts until the bearings are seated on each end of the roller (Fig. 1).

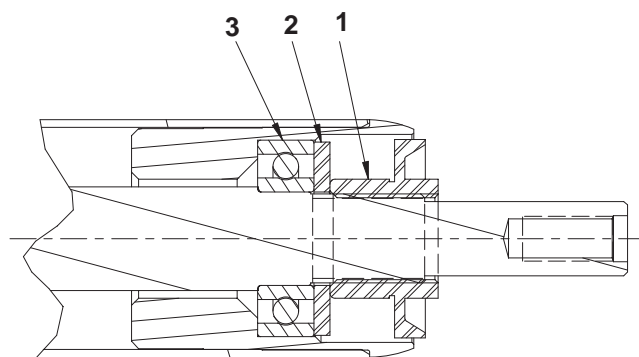


Figure 1

1. Nut
2. Assembly washer (Black)
3. Bearing

5. Remove the nut and black assembly washer from each end of roller (Fig. 1).
6. Apply a coating of #2 grease to the nut surface shown in figure 2.

Important Failure to grease the nut may result in damage to the seal during installation.

Note: Take care not to scratch the surface of the nut where the seal will be running.

7. Install seal onto nut positioning as shown in figure 2.

8. Pack the back of the seal 75-90% full with #2 grease as shown in figure 2.
9. Install a nut with seal onto each end of the roller (Fig. 2).
10. Tighten each nut until it bottoms out on the bearing (Fig. 2).
11. Remove the nut from each end of roller (Fig. 2).

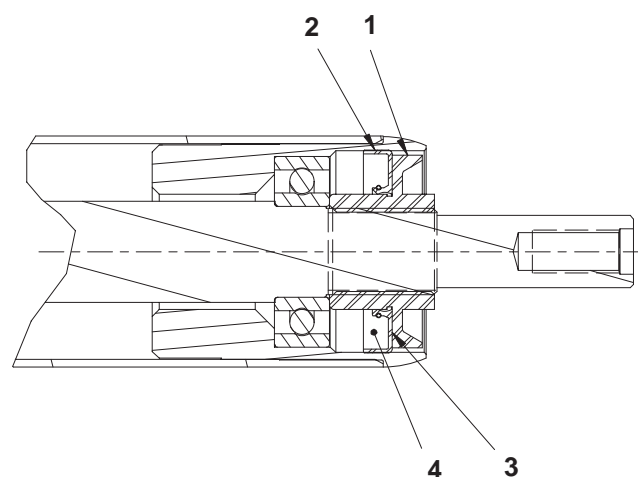


Figure 2

1. Nut
2. Seal
3. Grease this surface of nut
4. Pack grease in this area

12. Install an assembly spacer, yellow assembly washer and nut onto each end of the roller (Fig. 3).

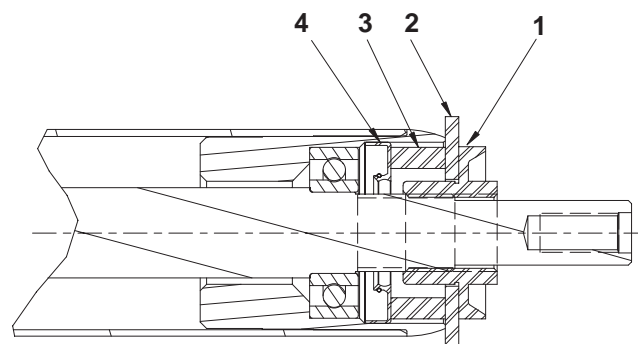


Figure 3

1. Nut
2. Assembly washer (Yellow)
3. Spacer
4. Seal

13. Tighten each nut until the yellow assembly washer bottoms out against the roller housing (Fig. 3).
 14. Remove the nut, assembly washer and assembly spacer from each end of the roller (Fig. 3).
 15. Insert a V-ring onto each nut (Fig. 4).
 16. Lubricate seal lip with #2 grease (Fig. 4).
- Note:** If reusing old nuts, apply Blue Loctite® to the threads of the nuts.
17. Install a nut with V-ring onto each end of the roller (Fig. 4). Torque the nuts to 25 to 30 ft.-lbs. (34–41 N·m).

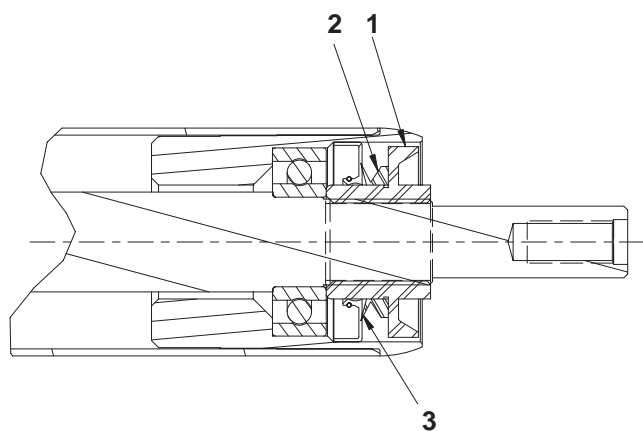


Figure 4

- | | |
|-----------|---------------------------|
| 1. Nut | 3. Lubricate this surface |
| 2. V-ring | |
-