



Count on it.

Parts Catalog

**22in Recycler[®] Max
Lawn Mower with SmartStow[®]**

Model No. 21486—Serial No. 40000000 and Up



Ordering Replacement Parts

To order replacement parts, please supply the part number, the quantity, and the description of each part desired.

Understanding Reference Numbers

Each identified part in an illustration has a reference number. The reference number for a part also appears in the parts list, along with other information about the part.

This catalog uses two special reference number formats, one to indicate parts in a service assembly and another to indicate the quantity of a given part in an illustration.

Service Assembly Reference Numbers

Parts in service assemblies have reference numbers in the form a:b. The a represents the reference number of the entire service assembly and the b represents a sequential number unique to each part within the service assembly.

For example, a wheel assembly might be identified by reference number 6, the tire by 6:1, the valve by 6:2, and the wheel by 6:3. When you order the assembly identified by reference number 6, you receive all parts identified by reference numbers 6:1, 6:2, and 6:3. However, you may also order any part individually. Reference numbers of this type appear in illustration and in parts lists.

Reference Numbers Indicating Quantity

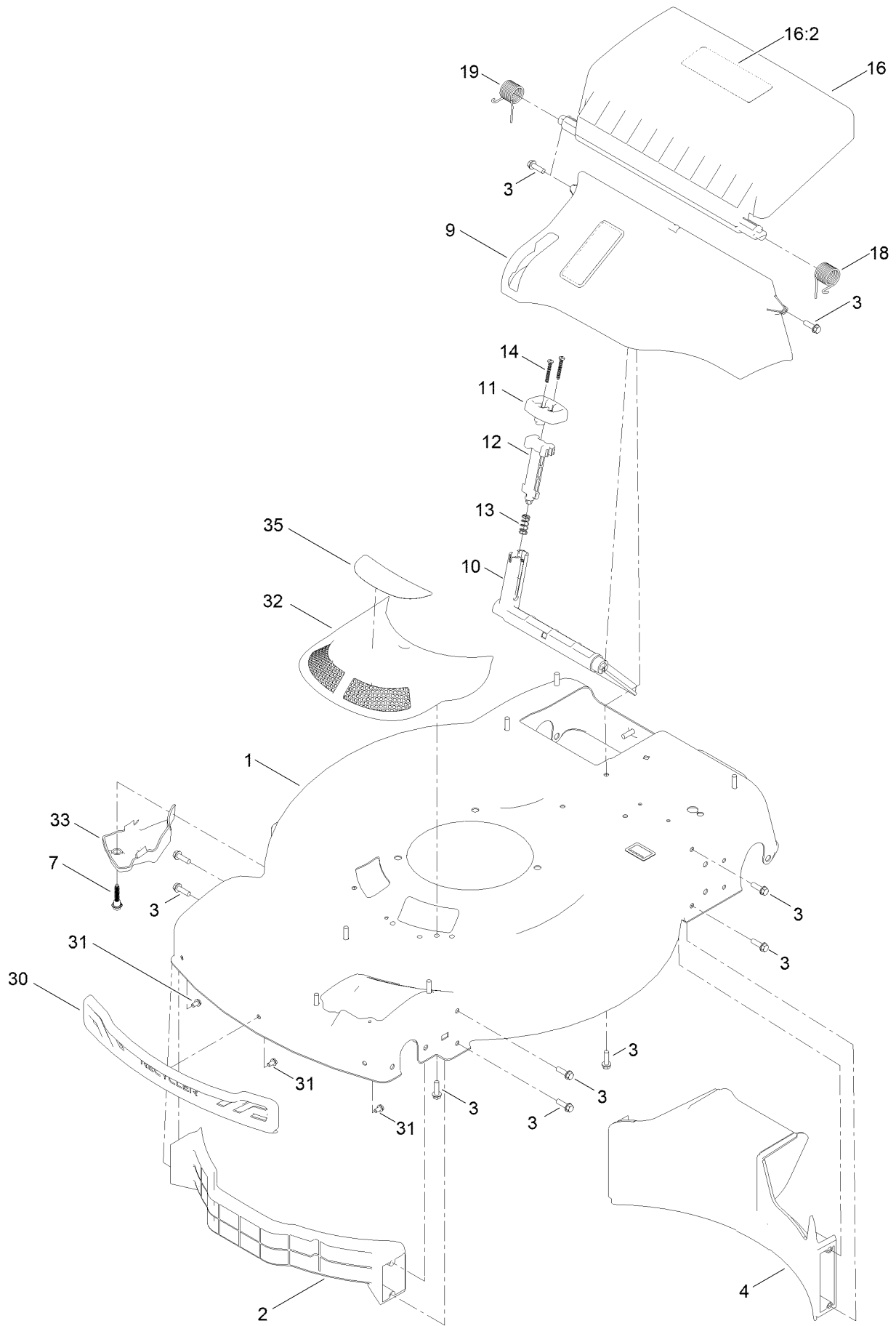
In an illustration, if a reference number indicates more than one part, the reference number has the form nX y. The n represents the quantity of the part, the X is the multiplication symbol, and the y represents the reference number.

For example, in an illustration, the reference number 2X 37 means that two of the parts identified by reference number 37 are indicated.

Contents

Housing Assembly	4
Rear Bag Assembly	6
Deck Decal Assembly	8
Engine Assembly	10
Front Wheel and Height-of-Cut Assembly	12
Rear Wheel and Height-of-Cut Assembly	14
Handle Assembly	16
Electrical Assembly	18
Attachments and Accessories	20

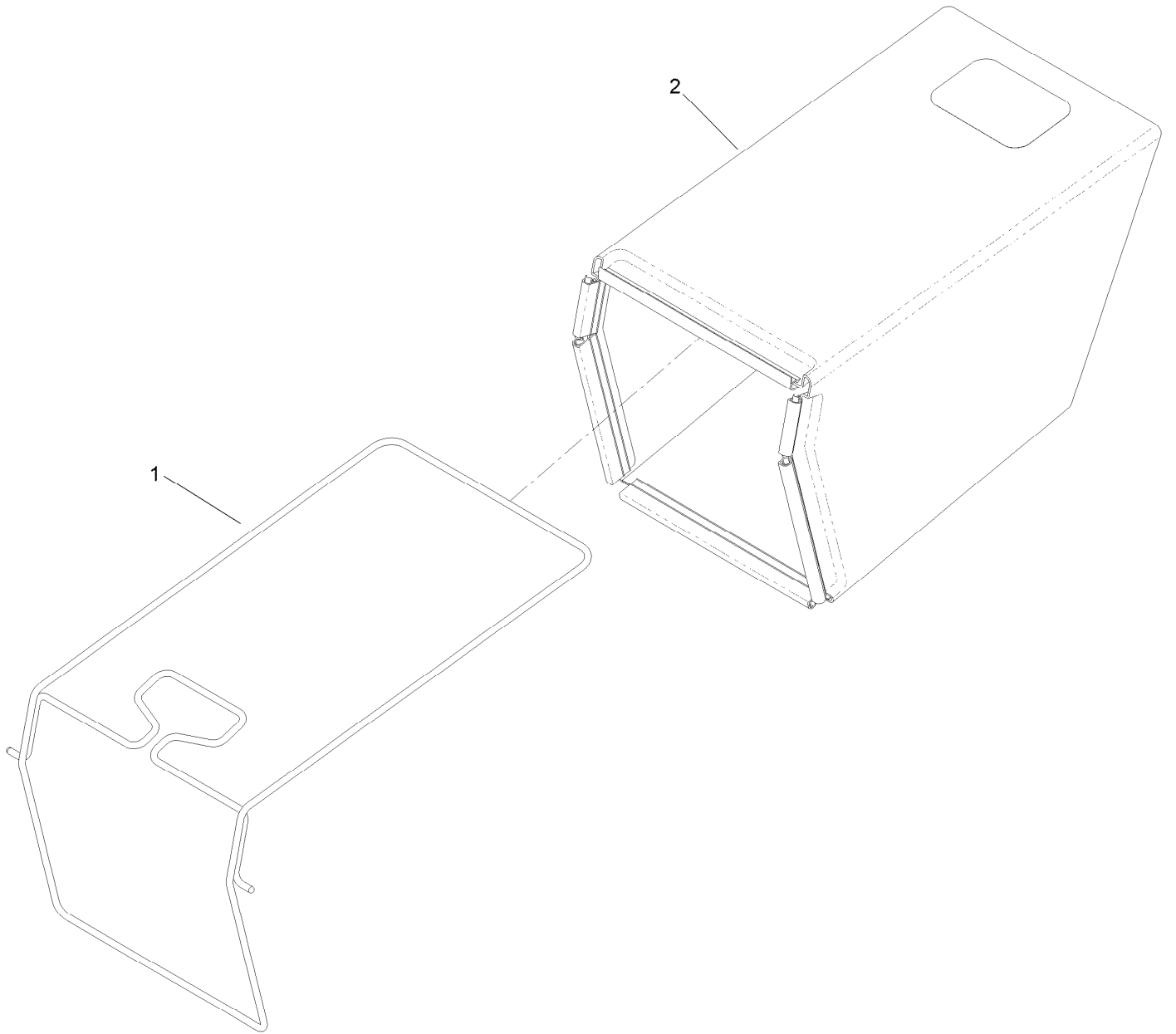
Housing Assembly



Housing Assembly (continued)

<i>Ref.</i>	<i>Part Number</i>	<i>Qty.</i>	<i>Description</i>	<i>Ref.</i>	<i>Part Number</i>	<i>Qty.</i>	<i>Description</i>
1	161-8183	1	Housing ASM	14	32104-120	2	Screw-PPH
2	144-6427	1	Baffle-Front	16	139-5476	1	ASM-Rear Door, In Mold
3	46-8091	17	Screw-HWH	16:2	140-2394	1	Artwork-Door, In-Mold
4	139-5440	1	Baffle-Rear, Rwd	18	139-5478	1	Spring-Torsion, LH
7	140-4038	1	Screw-Shldr,HWH	19	139-5479	1	Spring-Torsion, RH
9	140-2368	1	ASM-Chute, In Mold	30	139-5457	1	Bumper-Front
10	139-5443	1	Deflector-Recycle	31	139-5467	3	Screw-Plastic, HWH
11	139-5444	1	Knob-Recycle	32	144-0210	1	ASM-Intake, Rwd
12	139-5445	1	Latch-Recycle	33	140-2384	1	Cover-Intake, Bottom
13	140-4192	1	Spring-Compression	35	161-4751	1	Decal-Vortex

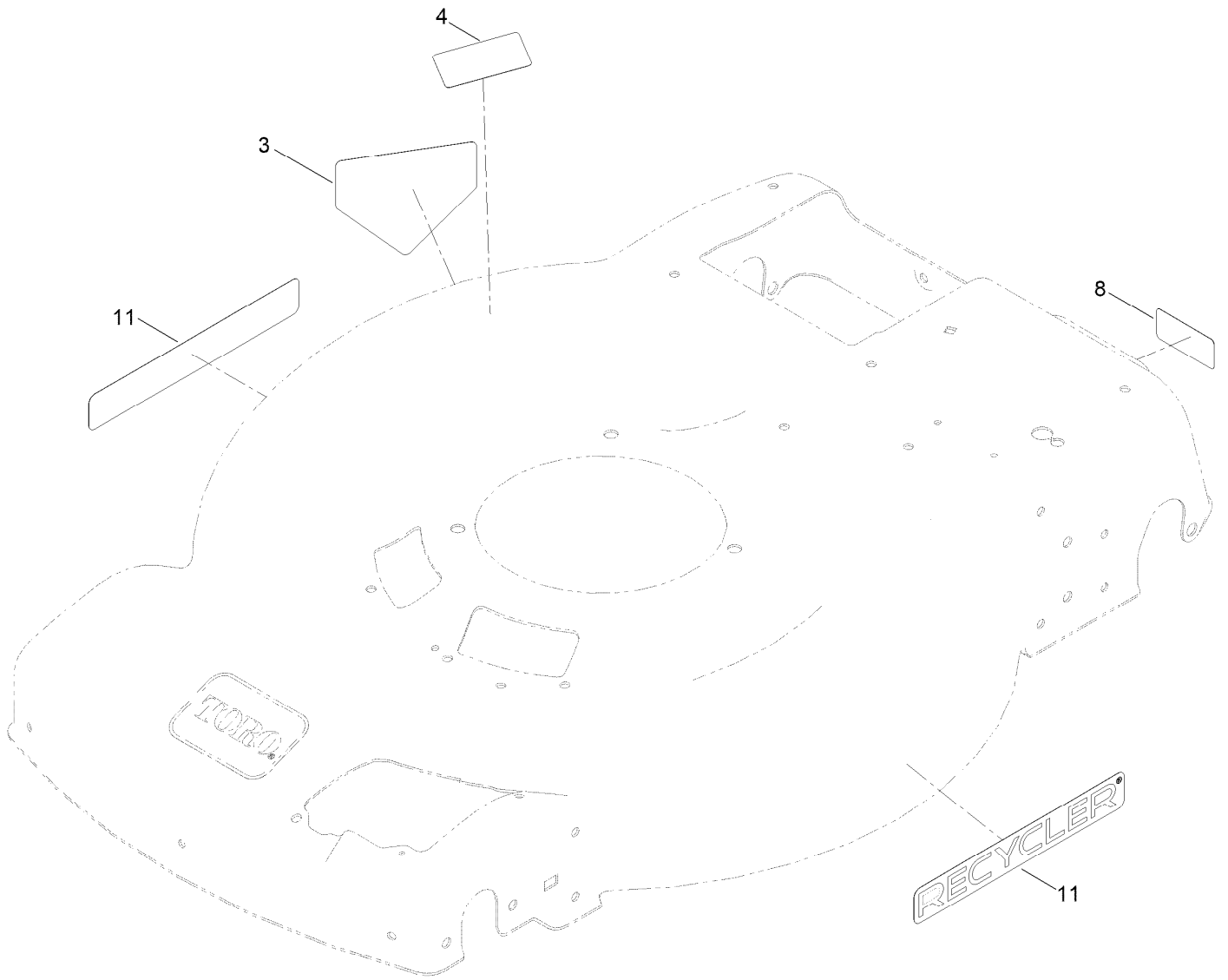
Rear Bag Assembly



Rear Bag Assembly (continued)

<i>Ref.</i>	<i>Part Number</i>	<i>Qty.</i>	<i>Description</i>
1	139-5470-03	1	ASM-Frame, Bag
2	139-5471	1	ASM-Bag, Grass

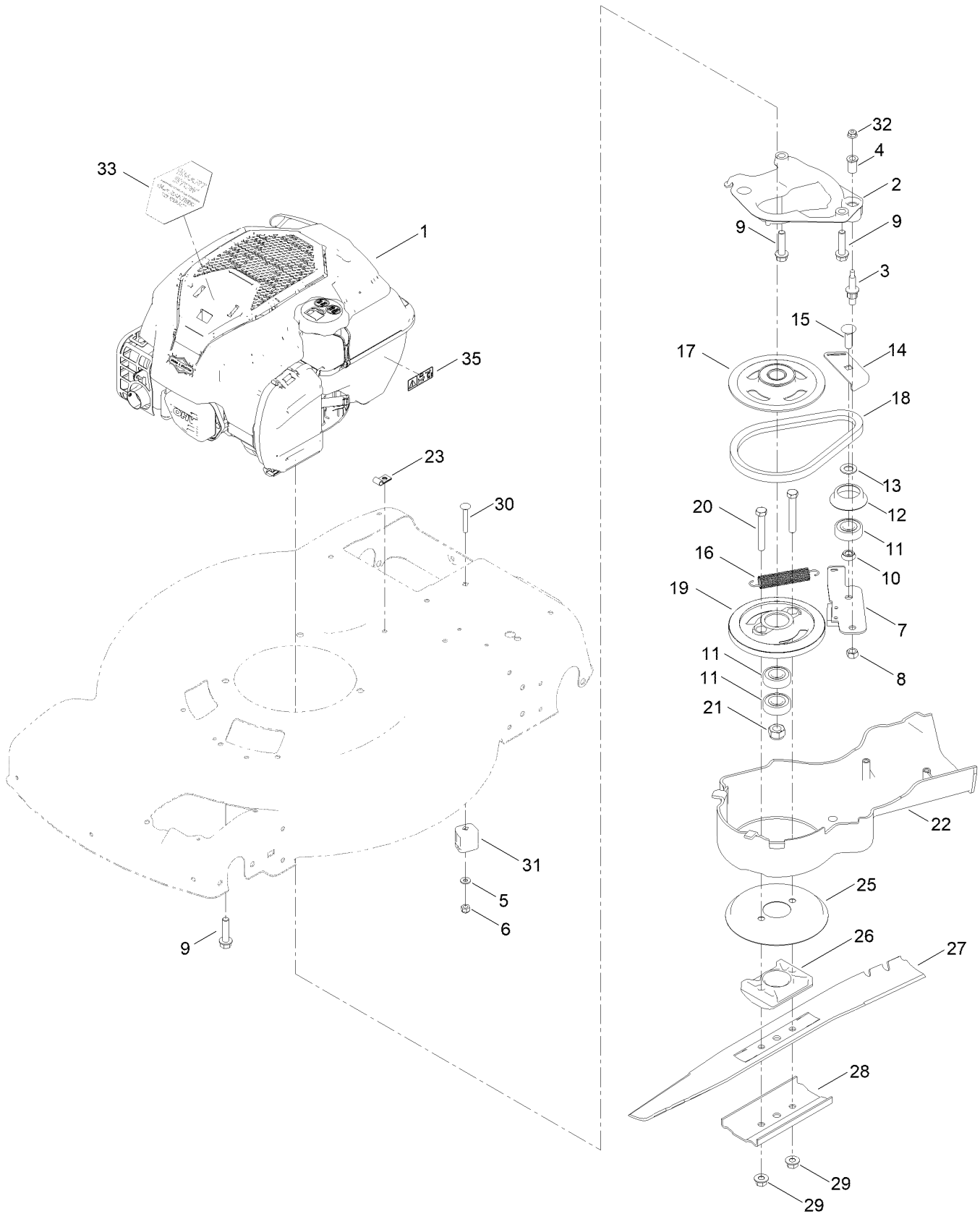
Deck Decal Assembly



Deck Decal Assembly (continued)

<i>Ref.</i>	<i>Part Number</i>	<i>Qty.</i>	<i>Description</i>	<i>Ref.</i>	<i>Part Number</i>	<i>Qty.</i>	<i>Description</i>
3	94-8072	1	Decal-Danger	8	121-5684	1	Decal-Location, Service Dealer
4	125-5092	1	Decal-Placement, Foot	11	161-4750	2	Decal-Recycler Max

Engine Assembly



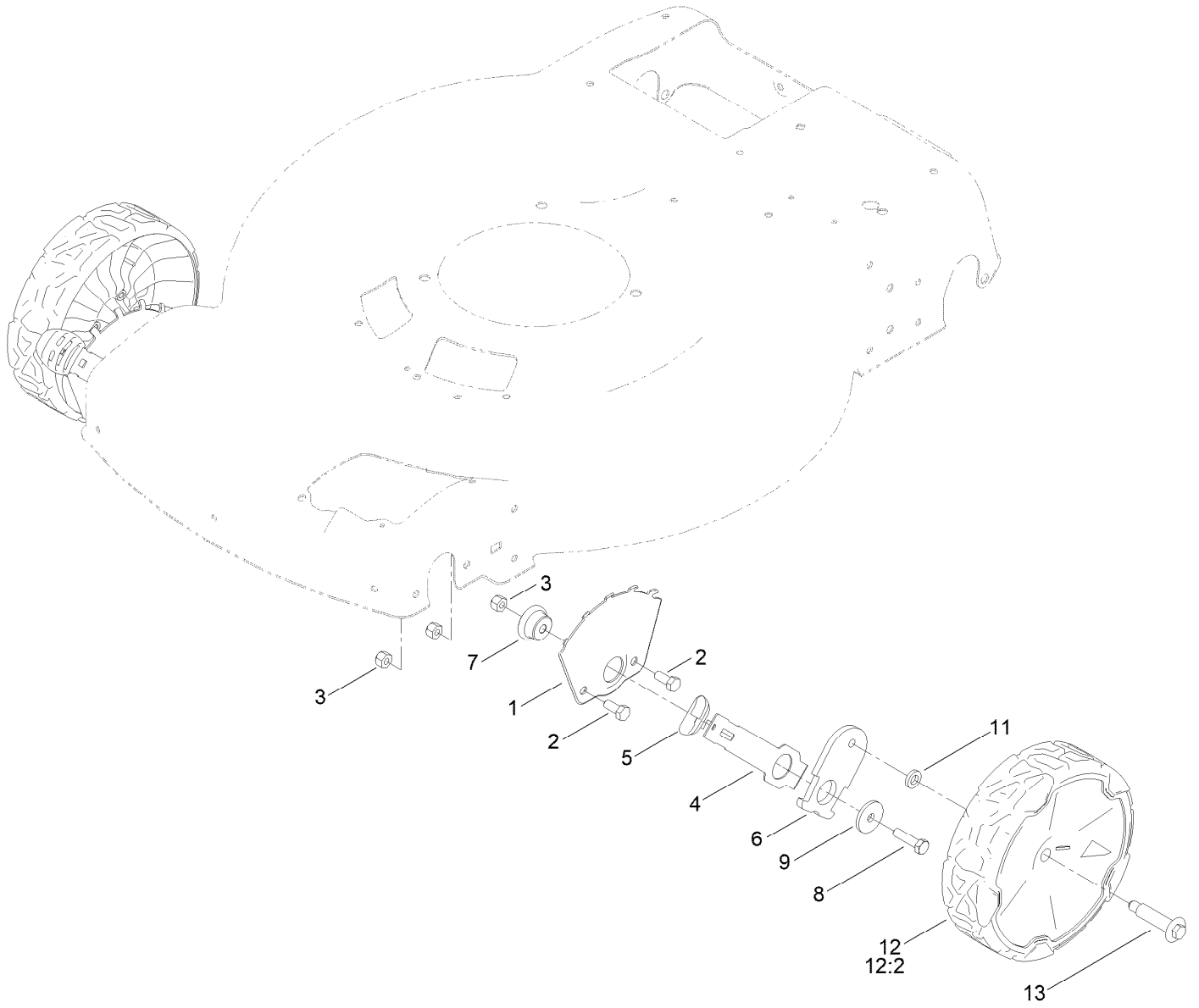
Engine Assembly (continued)

<i>Ref.</i>	<i>Part Number</i>	<i>Qty.</i>	<i>Description</i>	<i>Ref.</i>	<i>Part Number</i>	<i>Qty.</i>	<i>Description</i>
1		1	Engine-Briggs 725 Exi BBC SS ●■	17	117-5970	1	Pulley
2	132-4469	1	Plate-Anchor	18	110-1790	1	Belt
3	107-0759	1	Bolt-Shoulder	19	126-8108	1	Drum
4	107-0797	1	Bushing	20	3211-42	2	Screw-HH
5	3256-16	1	Washer-Flat	21	108-9342	1	Nut-Hex
6	137-3094	1	Nut-Hex	22	115-2892	1	Cover
7	125-1063	1	Plate-Brake	23	2412-72	1	Clip-Closed, Insulated
8	603773	2	Nut-Hex Lock	25	138-3225	1	Disk
9	32144-102	3	Screw-HWH	26	107-7487	1	Support-Blade
10	107-0758	1	Spacer-Bearing	27	131-4547-03	1	Blade-22 Inch
11	38-7820	3	Bearing-Ball	28	108-3766-03	1	Support-Blade
12	138-3217	1	Retainer-Belt	29	127-6852	2	Nut-Flange, Lock
13	605256	1	Spacer	30	120-9698	1	Bolt-CARR
14	138-3222	1	Plate-Guide	31	106-6801	1	Anchor-Cable
15	119-4162	1	Screw-CARR	32	119-4040	1	Nut-HF, NI
16	108-3792	1	Spring-Tension, Brake	33	145-5603	1	Decal-Briggs 725 Exi SS
				35	133-8198	1	Decal-Level, Fuel

● Not serviced separately

■ Obtain parts from www.briggsandstratton.com

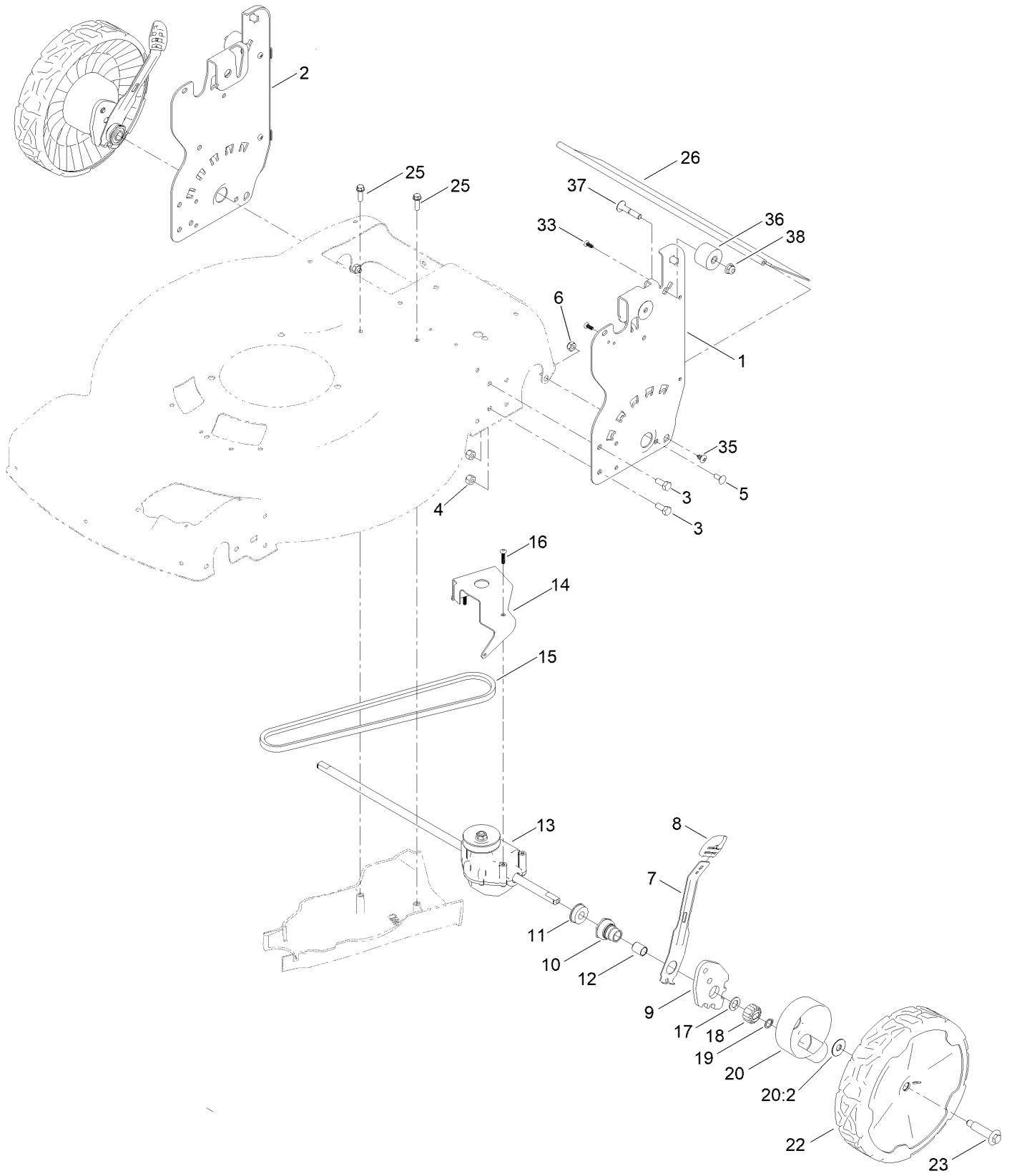
Front Wheel and Height-of-Cut Assembly



Front Wheel and Height-of-Cut Assembly (continued)

<i>Ref.</i>	<i>Part Number</i>	<i>Qty.</i>	<i>Description</i>	<i>Ref.</i>	<i>Part Number</i>	<i>Qty.</i>	<i>Description</i>
1	115-1956-05	2	Plate-HOC,Front Fsvq	8	322-6	2	Screw-HH
2	322-3	4	Screw-HH	9	105-3048	2	Washer-Flat
3	3296-29	6	Nut-Lock, NI	11	139-5449	2	Washer-Wheel Bolt
4	105-1809	2	Arm-Spring	12	144-6469	2	ASM-Wheel, 8" (Bearings)
5	105-3042	2	Knob-Lever, HOC	12:2	52-2450	2	Bearing-Wheel
6	137-9128	2	Arm-Pivot, Front	13	145-3899	2	Wheel Bolt
7	105-1818	2	Bushing-Mount, HOC				

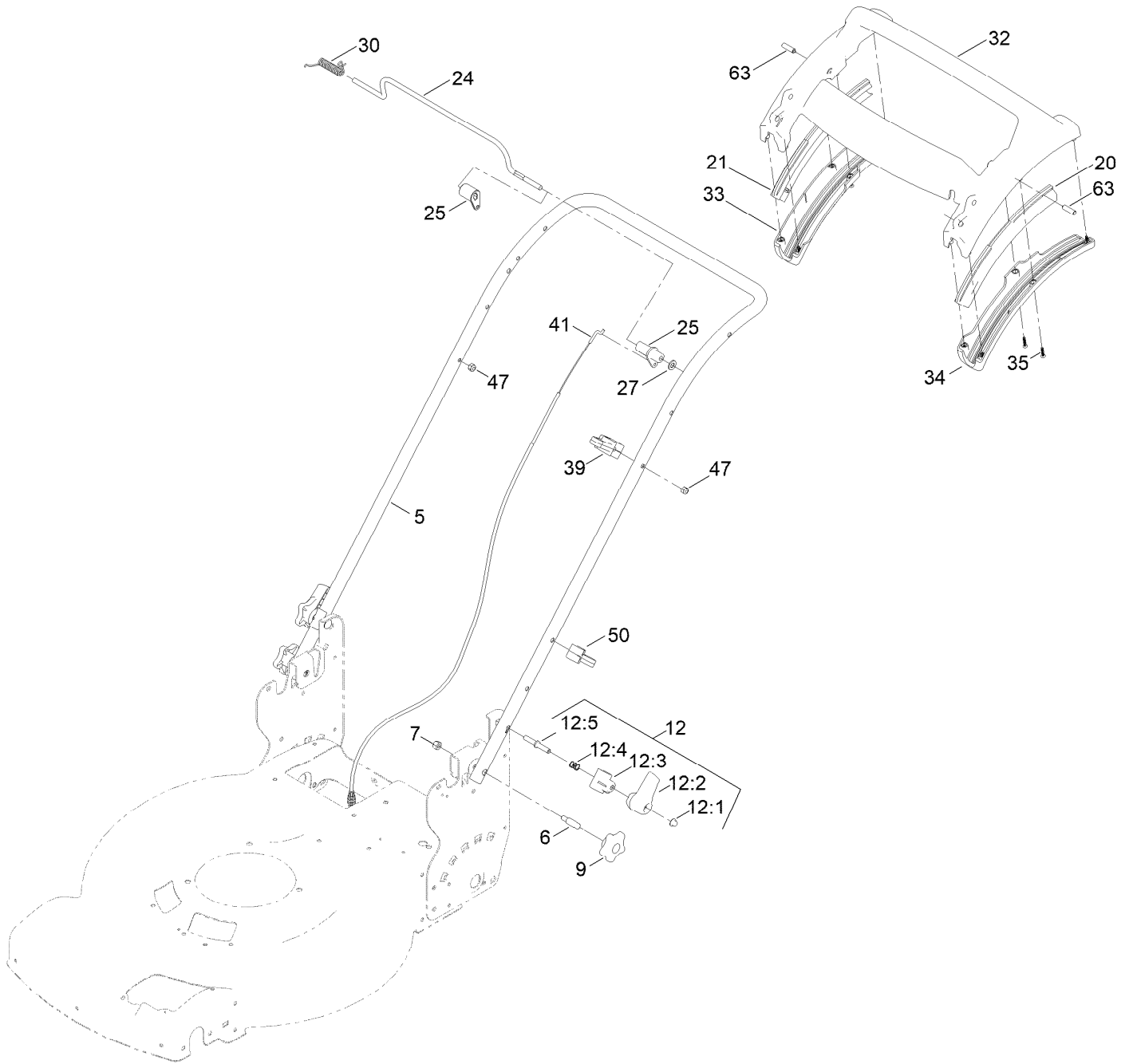
Rear Wheel and Height-of-Cut Assembly



Rear Wheel and Height-of-Cut Assembly (continued)

<i>Ref.</i>	<i>Part Number</i>	<i>Qty.</i>	<i>Description</i>	<i>Ref.</i>	<i>Part Number</i>	<i>Qty.</i>	<i>Description</i>
1	145-5651-05	1	Plate-HOC, LH (ISO)	16	108-7476	3	Screw-Plastite
2	145-5650-05	1	Plate-HOC, RH (ISO)	17	110-7191	2	Washer-Thrust
3	322-3	4	Screw-HH	18	131-5399	2	Gear-Pinion, 15T
4	3296-29	4	Nut-Lock, NI	19	32151-61	2	Ring-Retaining
5	3229-11	2	Screw-CARR	20	140-2362	2	ASM-Cover, Gear (Dk Gray)
6	3296-16	2	Nut-Lock, NI	20:2	614426	1	Washer-Stepped
7	132-4486	2	Arm-Spring	22	144-6474	2	ASM-9.65" Wheel, Geared
8	105-3042	2	Knob-Lever, HOC	23	145-3899	2	Wheel Bolt
9	139-5451	2	Arm-Pivot, Rear	25	46-8091	2	Screw-HWH
10	108-9779	2	Retainer-Bushing, HOC	26	139-6597	1	Shield-Trailing
11	104-8699	2	Bearing-Ball	33	107-7461	4	Screw-Plastite
12	108-9782	2	Bushing-Sleeve	35	139-1692	2	Screw-PTH
13	139-6561	1	Transmission-Rwd	36	144-0218	2	Bumper-Isolator
14	114-7977-03	1	Bracket-Transmission	37	144-6540	2	Screw-CARR-Spcl
15	140-4041	1	V-Belt	38	104-8300	2	Nut-HF, NI

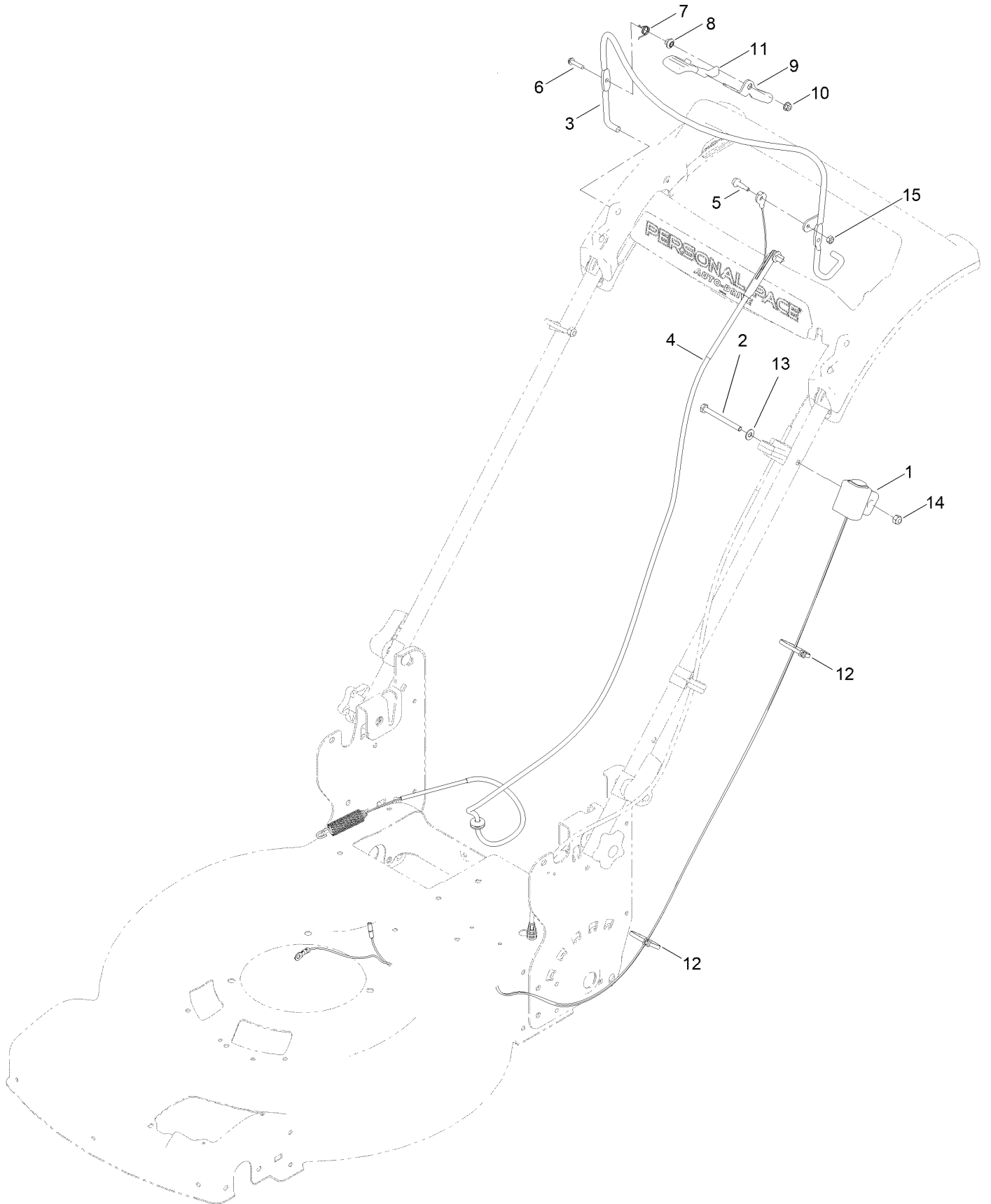
Handle Assembly



Handle Assembly (continued)

<i>Ref.</i>	<i>Part Number</i>	<i>Qty.</i>	<i>Description</i>	<i>Ref.</i>	<i>Part Number</i>	<i>Qty.</i>	<i>Description</i>
5	144-6516-05	1	Handle-Curved	25	139-6554	1	Lever-Traction, Rwd
6	139-6588	2	Bolt-Shoulder, Handle	27	3256-23	1	Washer-Plain
7	3296-29	2	Nut-Lock, NI	30	140-4194	1	Spring-Torsion
9	117-5976	2	Knob-Handle	32	139-6569	1	Handle-Personal Pace, Curved
12	138-3249	2	Quick Release ASM	33	139-6567	1	Bottom-Handle, RH
12:1	140-4157	1	Nut-Push	34	139-6568	1	Bottom-Handle, LH
12:2	138-3248	1	Lever-Release	35	94-4496	10	Screw-PPH
12:3	138-3253	1	Anchor-Spring	39	139-6581	1	Anchor-Cable, Rwd
12:4	115-2858	1	Spring-Compression	41	139-6595	1	Cable-Traction, Rwd (Pp)
12:5	140-4158	1	Rod-Release	47	3296-73	2	Nut-Lock, NI
20	140-2367	1	Guide-Curved, LH (Rwd)	50	114-7988	1	Guide-Cable
21	140-2366	1	Guide-Curved, RH (Rwd)	63	139-6577	2	Pin-Handle, Pp
24	139-5464	1	Rod-Control, Traction				

Electrical Assembly



Electrical Assembly (continued)

<i>Ref.</i>	<i>Part Number</i>	<i>Qty.</i>	<i>Description</i>	<i>Ref.</i>	<i>Part Number</i>	<i>Qty.</i>	<i>Description</i>
1	117-5975	1	Switch Housing ASM	9	161-4788	1	Lever
2	321-57	1	Screw-HH	10	139-1712	1	Nut-Hex Flange
3	147-0505-03	1	Bail-Brake [black]	11	112-8884	1	Knob
4	115-8439	1	Cable-Brake	12	614249	2	Tie-Cable
5	139-1709	1	Screw-Shoulder	13	139-1699	1	Washer-Flat
6	106-9169	1	Screw-HWH	14	3296-73	1	Nut-Lock, NI
7	107-7462	1	Spring-Torsion	15	137-3085	1	Nut-Hex
8	107-7463	1	Spacer				

Attachments and Accessories

For 21486 — 22in Recycler Max Lawn Mower with SmartStow

Product Name	Model/Part
Chute ASM	147-8696
Lawn Striping Kit with 22in Roller.....	20601
Bag-Walk Behind (Toro).....	490-7318
Lawnmower Cover.....	490-7462
22 Inch Atomic Blade.....	59534P

Notes:

Notes:

Notes:



Count on it.