



Form No. 3479-133 Rev A

Count on it.

Parts Catalog

Blower and Drive Kit 60in E-Z Vac™ for Z Master® Mower

Model No. 78553—Serial No. 420000000 and Up



Ordering Replacement Parts

To order replacement parts, please supply the part number, the quantity, and the description of each part desired.

Understanding Reference Numbers

Each identified part in an illustration has a reference number. The reference number for a part also appears in the parts list, along with other information about the part.

This catalog uses two special reference number formats, one to indicate parts in a service assembly and another to indicate the quantity of a given part in an illustration.

Service Assembly Reference Numbers

Parts in service assemblies have reference numbers in the form a:b. The a represents the reference number of the entire service assembly and the b represents a sequential number unique to each part within the service assembly.

For example, a wheel assembly might be identified by reference number 6, the tire by 6:1, the valve by 6:2, and the wheel by 6:3. When you order the assembly identified by reference number 6, you receive all parts identified by reference numbers 6:1, 6:2, and 6:3. However, you may also order any part individually. Reference numbers of this type appear in illustration and in parts lists.

Reference Numbers Indicating Quantity

In an illustration, if a reference number indicates more than one part, the reference number has the form nX y. The n represents the quantity of the part, the X is the multiplication symbol, and the y represents the reference number.

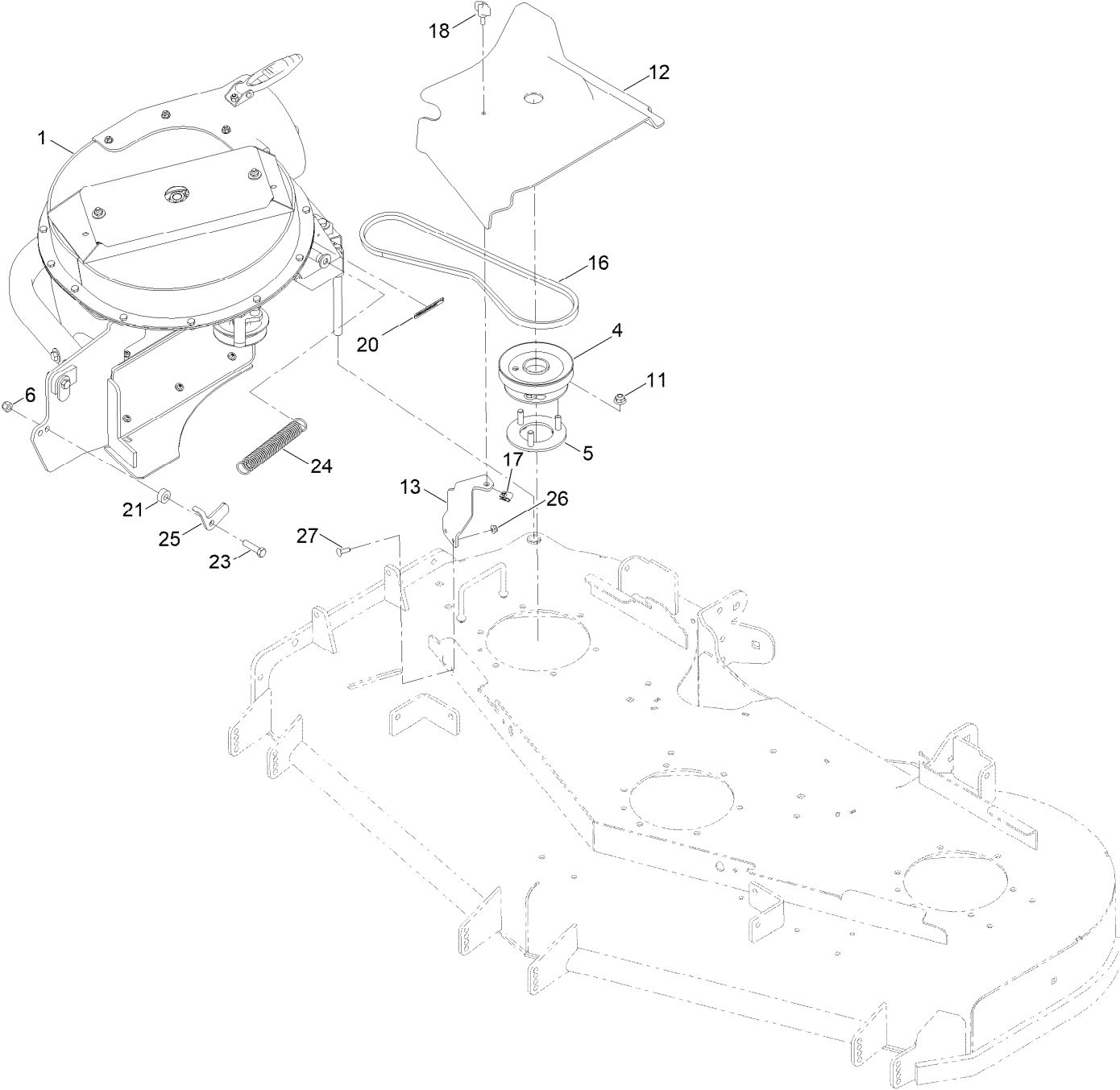
For example, in an illustration, the reference number 2X 37 means that two of the parts identified by reference number 37 are indicated.

Contents

Blower and Drive Assembly 4

Blower Assembly No. 145-5797 6

Blower and Drive Assembly

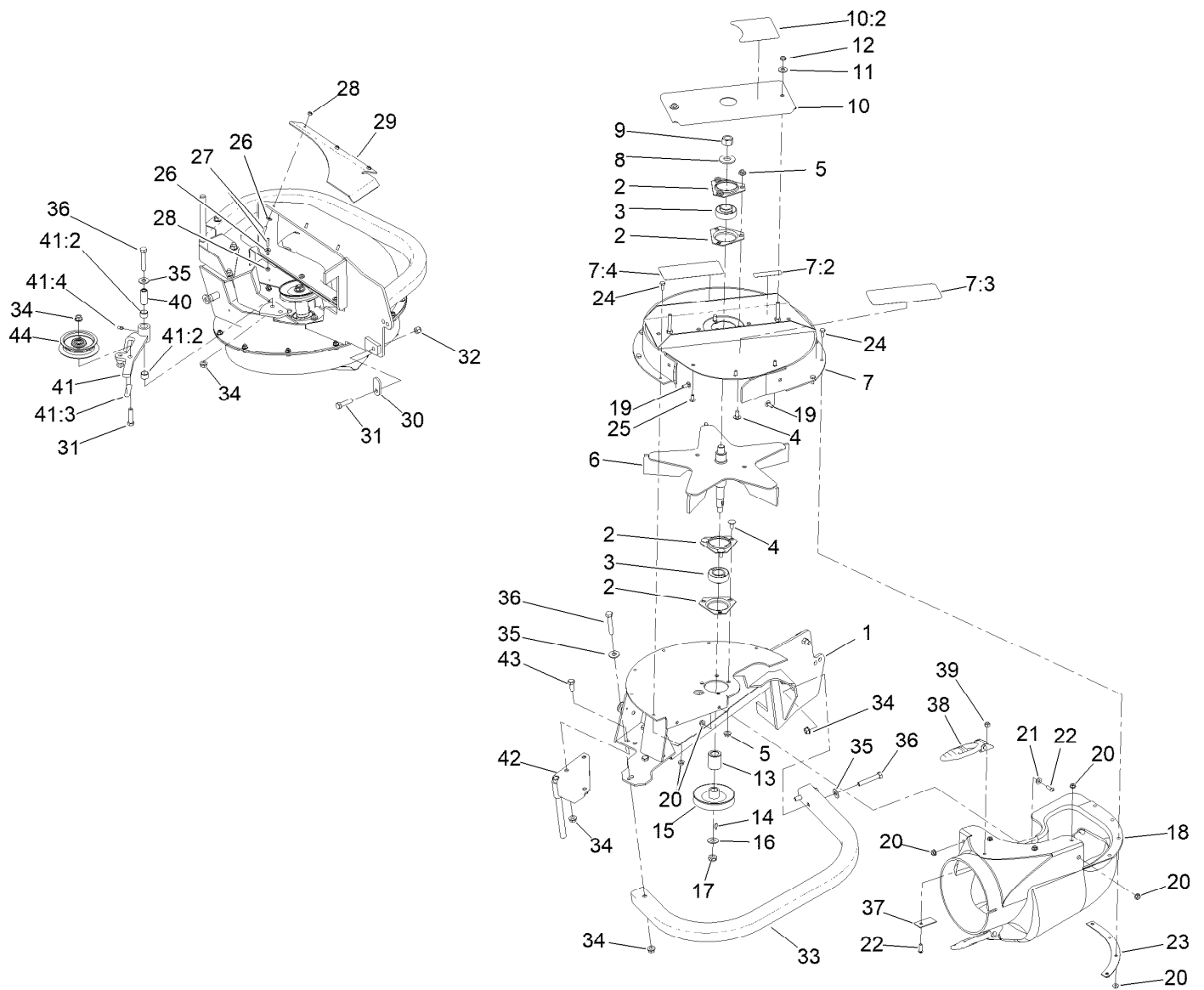


Blower and Drive Assembly (continued)

<i>Ref.</i>	<i>Part Number</i>	<i>Qty.</i>	<i>Description</i>	<i>Ref.</i>	<i>Part Number</i>	<i>Qty.</i>	<i>Description</i>
1	145-5797	1	Blower ASM	18	98-8332	1	Knob
4	112-8670-03	1	Pulley	20	133-8061	1	Decal-Warning
5	140-4906	1	Pulley Mount ASM	21	104-8426	1	Spacer
6	3296-39	1	Nut-Lock, NI	23	323-8	1	Screw-HH
11	104-8301	3	Nut-HF, NI	24	1-603693	1	Spring-Extension
12	117-0341	1	Belt Cover	25	112-1788	1	Latch-Stop
13	117-0342-01	1	Bracket-Cover, Belt	26	104-7201	2	Nut-HF, NI
16	112-2344	1	Belt-V	27	1-807512	2	Bolt-CARR
17	609900	1	Nut-Speed				



Ref.	Part Number	Qty.	Description
18	109-1134	1	Chute-Blower
19	3229-1	2	Screw-CARR
20	32128-33	17	Nut-HF
21	3256-22	2	Washer-Flat
22	3274-69	4	Screw-HSBH
23	103-0461-03	1	Plate-Backing, Blower
24	321-3	10	Screw-HH
25	3229-11	3	Screw-CARR
26	3256-16	6	Washer-Flat
27	104-2408	6	Screw-HSBH
28	3296-2	6	Nut-Lock, NI
29	110-0328-03	1	Plate-Bottom
30	1-353054	1	Latch-Catcher, Grass
31	323-8	2	Screw-HH
32	3296-39	1	Nut-Lock, NI
33	103-0458-01	1	Bumper
34	3290-357	8	Nut-HSF
35	3256-4	4	Washer-Flat
36	323-11	4	Screw-HH
37	103-3093	2	Plate-Backing
38	103-2898	2	Latch-Rubber



Blower Assembly No. 145-5797 (continued)

Ref.	Part Number	Qty.	Description
39	3296-42	2	Nut-Lock, NI
40	1-603044	1	Bushing
41	145-8455	1	Idler Arm W/Bushings
41:2	1-653600	2	Bushing
41:3	126-4659	1	Decal-Warning

Ref.	Part Number	Qty.	Description
41:4	302-19	1	Fitting-Grease
42	103-0445-03	1	Pin-Mount
43	323-5	3	Screw-HH
44	103-1103	1	Idler-Flat



Count on it.