



Greensmaster® 3050 2 Wheel Drive

Model No. 04351 - 24000001 and up.

Parts Catalog

Ordering Replacement Parts

To order replacement parts, please supply the part number, the quantity, and the description of each part desired.

Understanding Reference Numbers

Each identified part in an illustration has a reference number. The reference number for a part also appears in the parts list, along with other information about the part.

This catalog uses two special reference number formats, one to indicate parts in a service assembly and another to indicate the quantity of a given part in an illustration.

Service Assembly Reference Numbers

Parts in service assemblies have reference numbers in the form a:b. The a represents the reference number of the entire service assembly and the b represents a sequential number unique to each part within the service assembly.

For example, a wheel assembly might be identified by reference number 6, the tire by 6:1, the valve by 6:2, and the wheel by 6:3. When you order the assembly identified by reference number 6, you receive all parts identified by reference numbers 6:1, 6:2, and 6:3. However, you may also order any part individually. Reference numbers of this type appear in illustrations and in part lists.

Reference Numbers Indicating Quantity

In an illustration, if a reference number indicates more than one part, the reference number has the form nX y. The n represents the quantity of the part, the X is the multiplication symbol, and the y represents the reference number.

For example, in an illustration, the reference number 2X 37 means that two of the parts identified by reference number 37 are indicated.

Contents

Description	Page	Description	Page
Control Pedal Assembly 3	Cylinder Head Assembly No. 1 Briggs and Stratton Model 350447-1331-E1 37
Traction Controls Assembly 5	Cylinder Head Assembly No. 2 Briggs and Stratton Model 350447-1331-E1 38
Front Wheel and Brake Assembly 6	Intake Manifold and Rocker Cover Assembly Briggs and Stratton Model 350447-1331-E1 39
Hydraulic Wheel Motor Assembly No. 92-9199 7	Carburetor Assembly Briggs and Stratton Model 350447-1331-E1 40
Steering Arm Assembly 8	Governor Assembly Briggs and Stratton Model 350447-1331-E1 41
Right-Hand Pull Frame Assembly 9	Alternator Assembly Briggs and Stratton Model 350447-1331-E1 42
Hydraulic Cylinder Assembly No. 106-9066 11	Fuel Pump, Oil Pump and Dipstick Assembly Briggs and Stratton Model 350447-1331-E1 43
Left-Hand Pull Frame Assembly 12	Air Cleaner Assembly Briggs and Stratton Model 350447-1331-E1 44
Rear Pull Frame Assembly 13	Blower Housing Assembly Briggs and Stratton Model 350447-1331-E1 45
Hydraulic Cylinder Assembly No. 106-9064 15	Flywheel Assembly Briggs and Stratton Model 350447-1331-E1 46
Seat Assembly 16	Starter Assembly Briggs and Stratton Model 350447-1331-E1 47
Control Valve Installation Assembly 17	Starter Assembly Briggs and Stratton Model 350447-1331-E1 48
Control Valve Assembly No. 105-3800 19	Gasket Assembly Briggs and Stratton Model 350447-1331-E1 49
Section 1 Assembly No. 105-3801 20	Carburetor Overhaul Kit Assembly Briggs and Stratton Model 350447-1331-E1 50
Section 2 Assembly No. 105-3802 21		
Section 3 Assembly No. 105-3803 22		
Section 4 Assembly No. 105-3804 23		
Section 5 Assembly No. 93-1386 24		
Engine Installation Assembly 25		
Hydraulic Pump Installation Assembly 26		
Frame Assembly 27		
Rear Wheel Assembly 28		
Control Panel Assembly 29		
Hydraulic Reservoir Assembly 30		
Fuel Tank Assembly 31		
Reel Motor Installation Assembly 32		
Reel Motor Assembly No. 105-9770 33		
Wiring Assembly 34		
Cylinder Assembly Briggs and Stratton Model 350447-1331-E1 35		
Crankshaft Assembly Briggs and Stratton Model 350447-1331-E1 36		

PROTOTYPE

Part Description Abbreviations

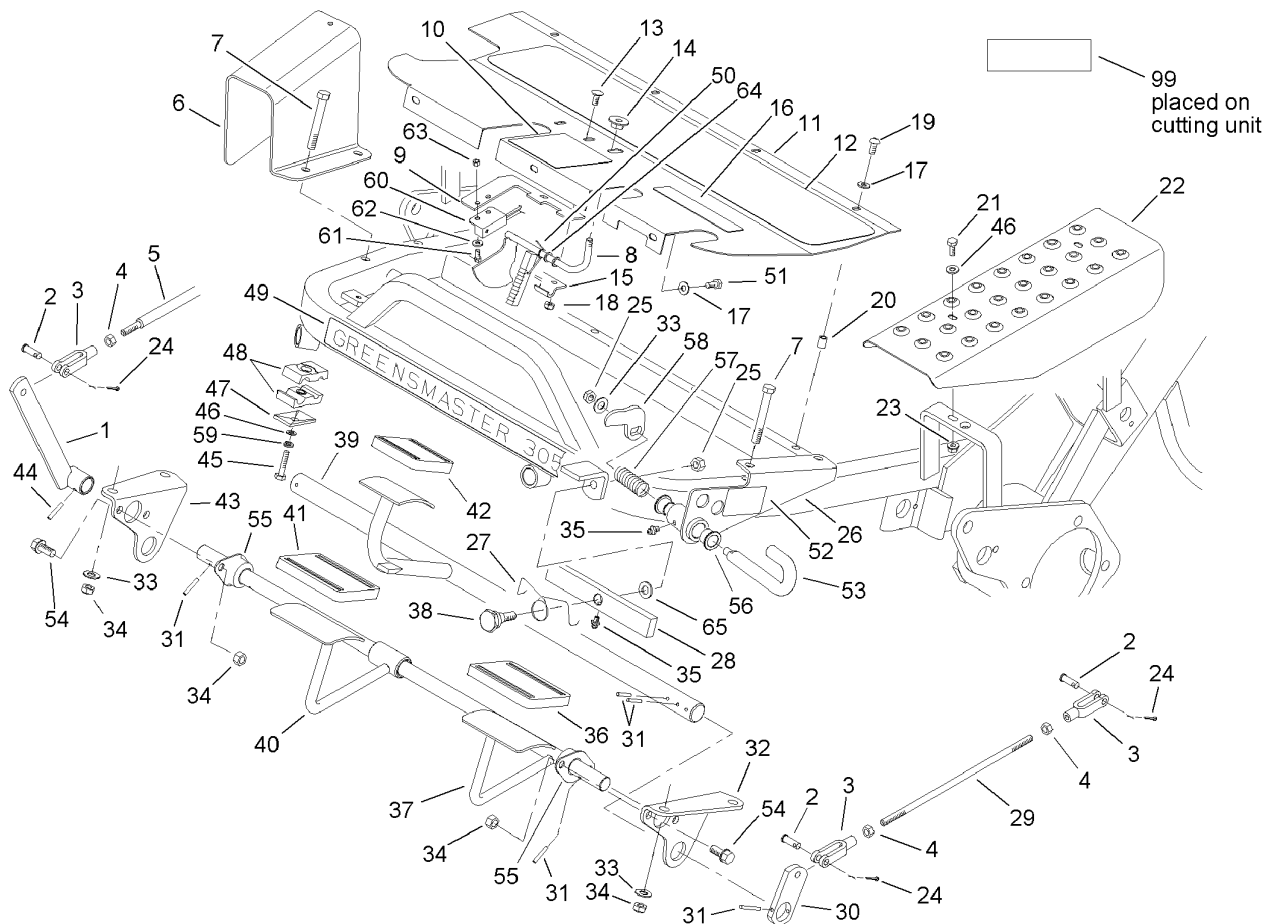
Part descriptions in this catalog may include the following abbreviations.

AR.	as required	HYD.	hydraulic
ASM.	assembly	INC.	incorporated
CARR.	carriage	LH.	left hand
DEG.	degrees	NI.	nylon insert
FH.	flat head	PPH.	phillips pan head
GA.	gauge	PTH.	phillips truss head
HF.	hex flange	PTO.	power take off
HH.	hex head	RH.	right hand
HHF.	hex head flange	SFH.	slotted fillister head
HHFTF.	hex head flange thread forming	SHH.	slotted hex head
HJ.	hex jam	SHWH.	slotted hex washer head
HLH.	hex lag head	SPH.	slotted pan head
HOC.	height-of-cut	SQH.	square head
HS.	hex	SRH.	slotted round head
HSBH.	hex socket button head	STD.	standard
HSFH.	hex socket flat head	TAP.	self tapping
HSH.	hex socket head	TTH.	torx truss head
HWH.	hex washer head	WH.	wing head
HWHTF.	hex washer head thread forming		

Footnotes

- | | | | |
|---|---|---|--|
| ❶ | Not illustrated | ❷ | Not serviced separately |
| ❸ | Included in Engine Gasket Set-Ref. 358. | ❹ | Included in Valve Gasket Set-Ref. 1095. |
| ❺ | Included in Carburetor Overhaul Kit-Ref. 121. | ❻ | Included in Valve Overhaul Gasket Set-Ref. 1095. |
| ❻ | Obtain parts from your local Briggs and Stratton dealer | | |

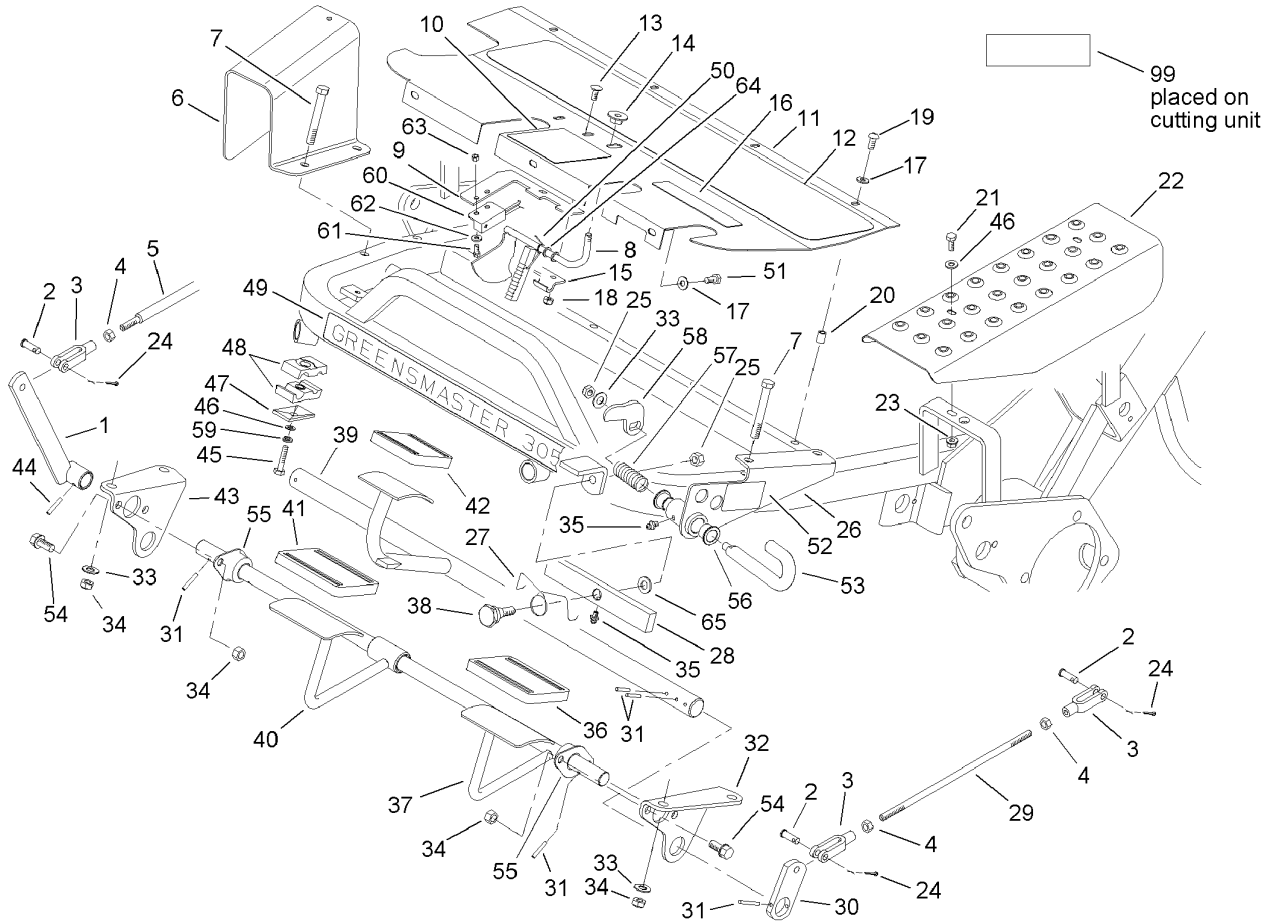
PROTOTYPE



Control Pedal Assembly

Ref	Part No.	Qty.	Description
1	49-6200-01	1	Lever-Cutting
2	283-61	5	Pin-Yoke
3	282-2	5	Yoke
4	3220-2	5	Nut
5	49-5430	1	Rod-Control
6	49-6110-01	1	Guard
7	323-13	4	Screw-HH
8	100-9819	1	Latch ASM
9	100-9821	1	Plate-Switch, Reed
10	93-8062	1	Decal-Brake, Parking
11	83-0640-01	1	Plate-Footrest
12	49-6120	1	Pad-Footrest
13	3229-11	2	Screw-CARR
14	32141-111	1	Nut-Adjusting
15	95-1629	1	Hinge-Lower
16	93-8075	1	Decal-Mow/lift
17	3256-1	7	Washer-Flat
18	3296-16	2	Nut-Lock, NI
19	3274-31	4	Screw-HSBH
20	32148-6	8	Insert-Nut
21	321-4	2	Screw-HH
22	83-0200-01	1	Plate-Cover, LH
23	32128-33	2	Nut-HF
24	3272-6	5	Pin-Cotter

Ref	Part No.	Qty.	Description
25	3296-39	2	Nut-Lock, NI
26	93-9901-01	1	Bracket-Lockout, Mow
27	83-0080	1	Spring-Pivot, Lift
28	106-6396	1	Lift-Pivot
29	27-2270	2	Rod-Adjustment, Brake
30	10-8100-01	2	Strap-Shaft, Brake
31	32121-35	8	Pin-Roll
32	88-9640-01	1	Bracket-Lift Pivot, LH
33	3256-24	5	Washer-Flat
34	3296-59	8	Nut-Lock, NI
35	302-5	2	Fitting-Grease
36	93-7631	1	Pad-Foot, Lift
37	106-6395	1	Cutting Control Shaft ASM
38	83-2590	1	Bolt-Shoulder, Pivot
39	83-0160	1	Shaft-Brake
40	106-6394	1	Mow Pedal ASM
41	93-7630	1	Pad-Foot
42	93-7629	1	Pad-Foot, Brake
43	88-9630-01	1	Bracket-Lift Pivot, RH
44	32121-6	1	Pin-Roll
45	321-11	1	Screw-HH
46	3256-22	3	Washer-Flat
47	69-9760	1	Coverplate
48	56-7970	2	Clamp-Tube

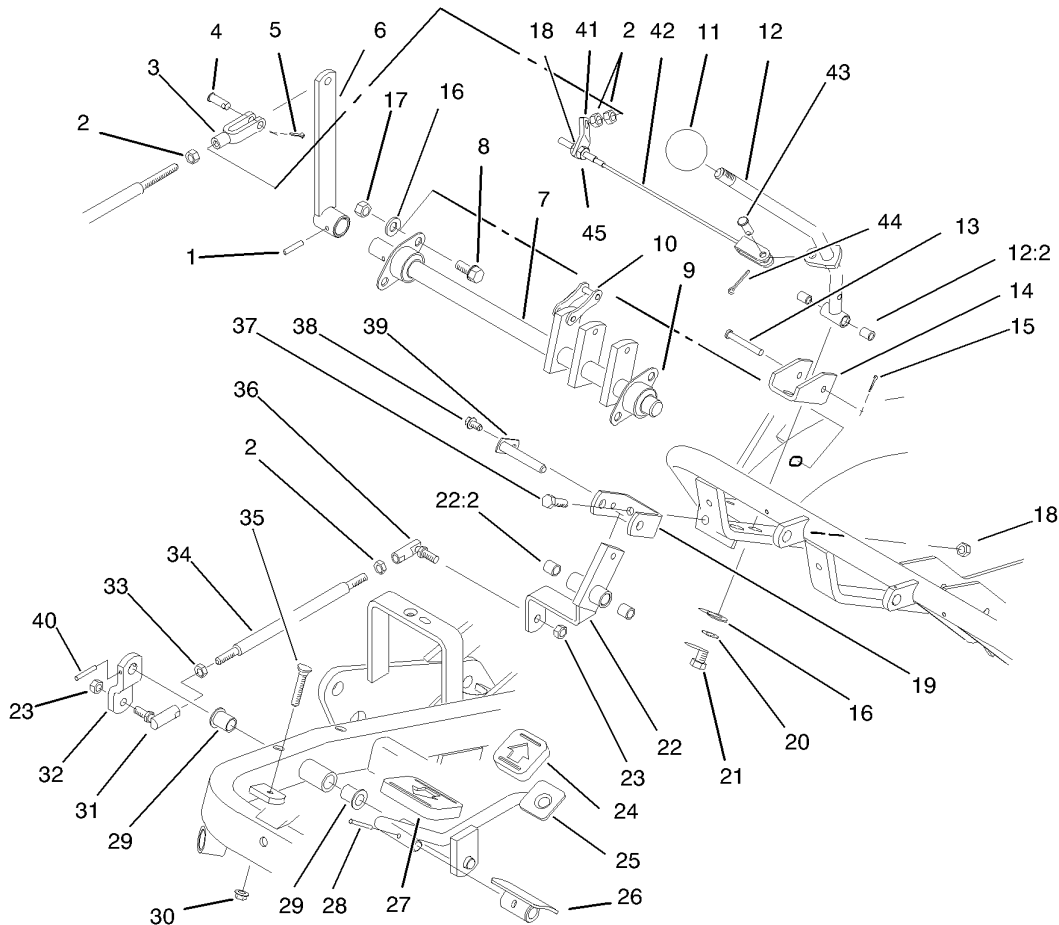


Control Pedal Assembly (continued)

Ref	Part No.	Qty.	Description
49	95-5997	1	Decal
50	10-8140	1	Spring-Latch, Brake
51	321-3	3	Screw-HH
52	93-9898	1	Decal-Lock
53	93-9903	1	Pin-Mow, Lockout
54	3234-1	4	Screw-HHF
55	27-2320	2	Bearing
56	3-1506	2	Bushing
57	76-0410	1	Spring-Compression
58	93-9904	1	Arm-Mow, Lockout
59	3253-3	1	Washer-Lock
60	104-2057	1	Sensor
61	48-7620	2	Screw-HH
62	33093-00	2	Washer-Flat
63	49-7810	2	Nut-Lock
64	75-5470	2	Spacer-Bearing
65	80-7730	1	Spacer
99	93-6691	3	Decal-Bolt, Eccentric

--	--	--	--

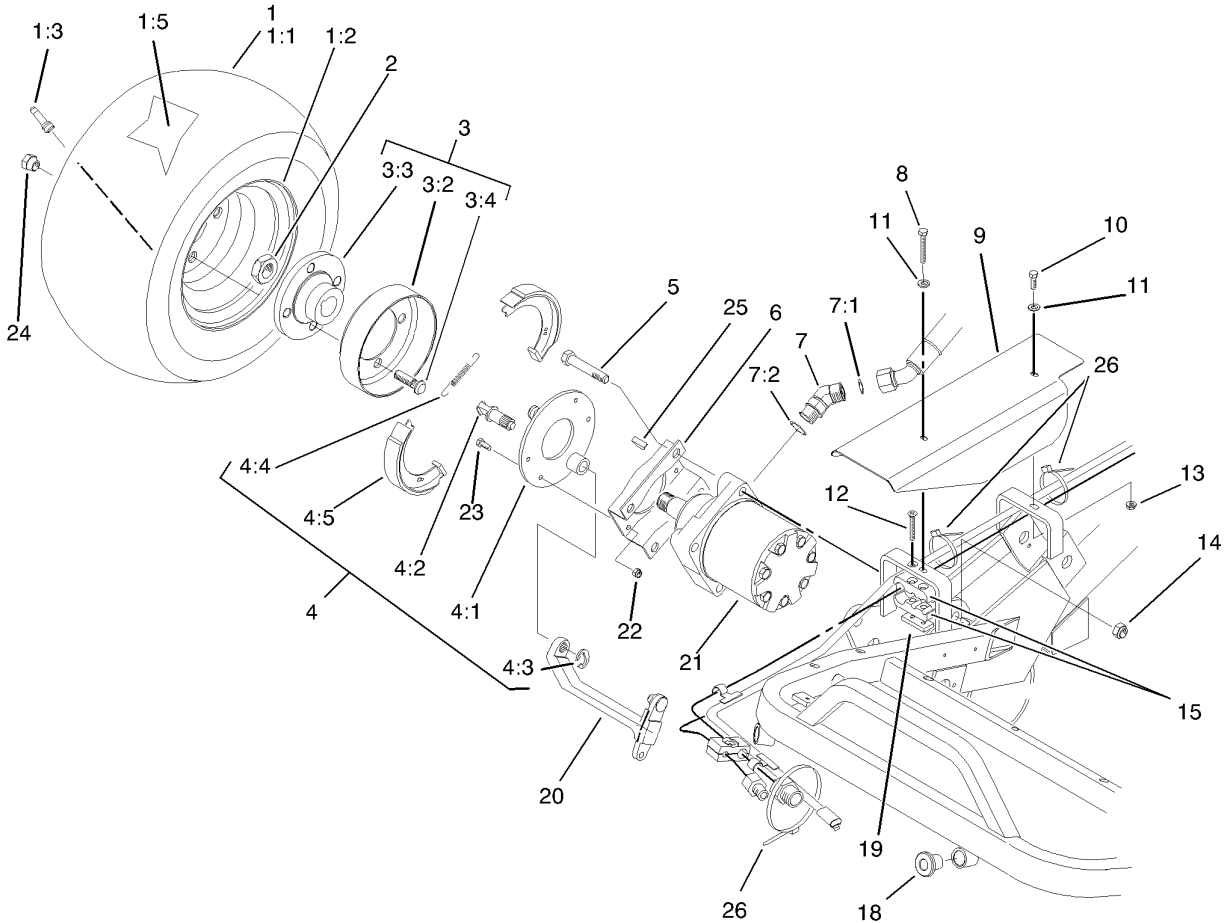
PROTOTYPE



Traction Controls Assembly

Ref	Part No.	Qty.	Description
1	32121-6	1	Pin-Roll
2	3220-2	4	Nut
3	282-2	1	Yoke
4	283-61	1	Pin-Yoke
5	3272-6	1	Pin-Cotter
6	47-5320-01	1	Lever
7	44-0870	1	Cam Shaft ASM
8	3234-1	4	Screw-HHF
9	27-2320	2	Bearing
10	57-6220	5	Link-Connecting
11	233-48	1	Knob
12	93-9934	1	Handle-Traction
12:2	256-251	2	Bushing
13	283-57	1	Pin
14	49-6220	1	Bracket-Arm, Control
15	3272-4	1	Pin-Cotter
16	3256-24	6	Washer-Flat
17	3296-59	4	Nut-Lock, NI
18	3296-29	3	Nut-Lock, NI
19	49-6250	1	Bracket-Pivot
20	3254-6	2	Washer-Lock, Internal
21	3211-2	2	Screw-HH
22	49-6260	1	Pivot ASM
22:2	256-2	2	Bushing

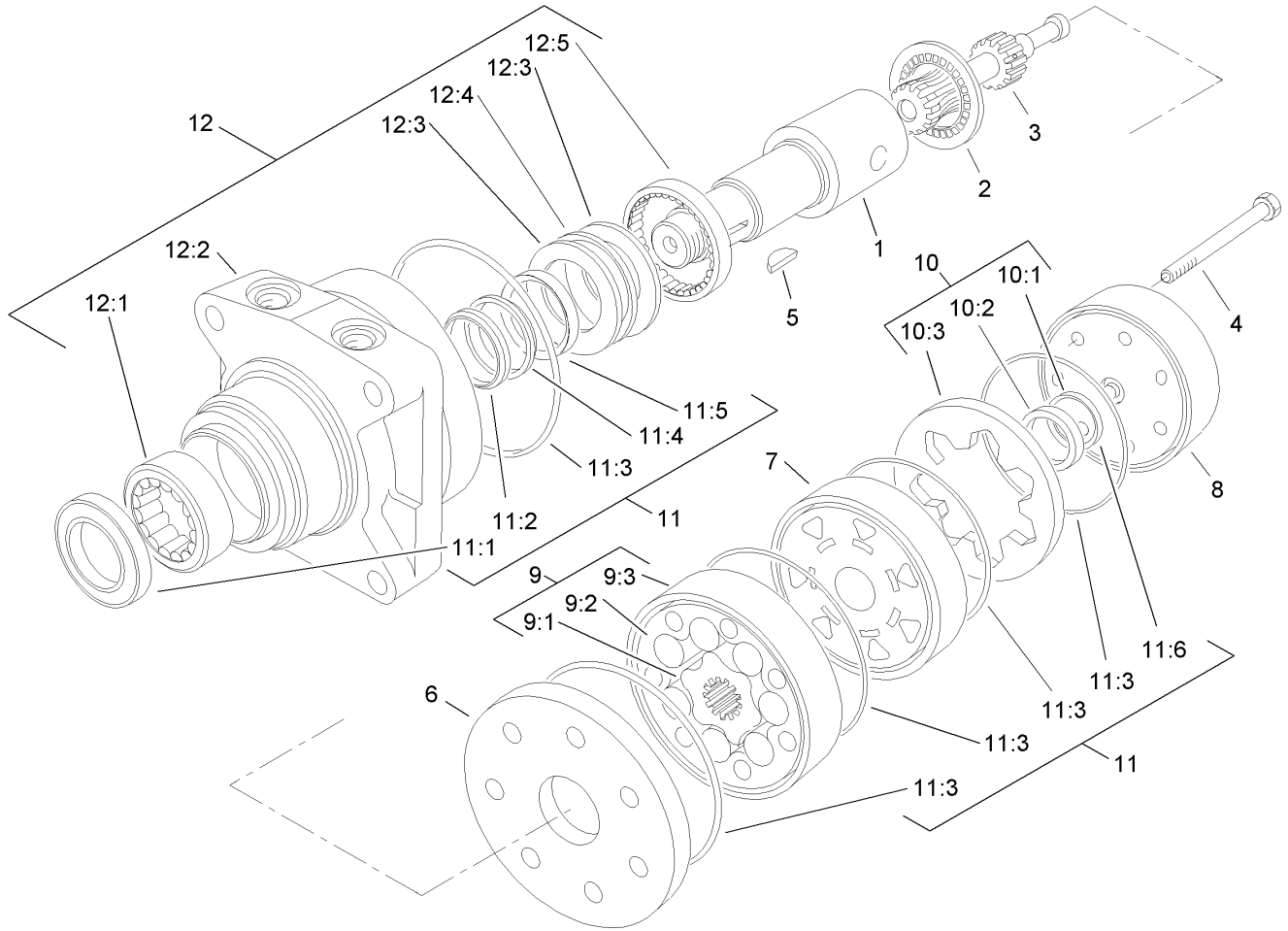
Ref	Part No.	Qty.	Description
23	3296-4	2	Nut-Lock, NI
24	74-9110	1	Pad-Pedal, Reverse
25	83-0540-01	1	Traction Pedal ASM
26	49-6440-03	1	Pedal-Forward
27	74-9100	1	Pad-Pedal, Forward
28	32121-45	1	Pin-Spring
29	256-155	2	Bushing-Flange
30	32128-20	1	Nut-HF
31	2411-42	1	Joint-Ball, LH
32	83-0630	1	Arm-Pivot, Traction
33	3220-20	1	Nut-Jam
34	83-0580	1	Rod-Control, Traction
35	17-9420	1	Screw-Handle
36	2411-43	1	Joint-Ball
37	322-5	2	Screw-HH
38	12-3270	1	Screw
39	49-6290	1	Pivot Shaft ASM
40	32121-51	1	Pin-Roll
41	93-9936	1	Bracket-Return, Traction
42	93-9937	1	Traction Cable ASM
43	283-62	1	Pin-Clevis
44	3272-10	1	Pin-Cotter
45	3217-6	1	Nut-Hex



Front Wheel and Brake Assembly

Ref	Part No.	Qty.	Description
①		2	Wheel And Tire ASM
1:1	28-3680	1	Tire
1:2	217-60	1	Rim
1:3	232-27	1	Stem-Valve
1:5	232-37	1	Tube
2	26-3790	2	Nut-Lock
3	10-6821	2	Brake Drum ASM
3:2	10-6850	1	Drum-Brake
3:3	10-6870-03	1	Hub-Wheel
3:4	85-6540	4	Stud-Drive
4	104-7705	2	Brake ASM
4:1	70-9870	1	Plate-Backing
4:2	104-7707	1	Shaft-Cam, Brake
4:3	104-7706	1	E Ring-Bowed
4:4	70-9880	2	Spring-Return
4:5	70-9840	2	Shoe-Brake
5	325-11	8	Screw-HH
6	84-2000-03	2	Bracket-Brake
7	340-14	4	Fitting-Hyd, 45 DEG
7:1	237-65	1	O-Ring
7:2	237-80	1	O-Ring
8	321-11	1	Screw-HH
9	83-0190-01	1	Cover-RH
10	321-4	1	Screw-HH

Ref	Part No.	Qty.	Description
11	3256-22	2	Washer-Flat
12	32108-100	1	Screw-FH
13	32128-33	1	Nut-HF
14	3296-23	8	Nut-Lock, NI
15	57-6140	2	Clamp-Tube, Half
18	83-1700	3	Bushing-Flange
19	83-1220	1	Plate-Clamp
20	93-2096	2	Lever-Brake
21	92-9199	2	Motor-Wheel, HYD
22	3296-42	8	Nut-Lock, NI
23	321-5	8	Screw-HH
24	242-50	8	Nut-Lug
25	3257-42	2	Key-Woodruff
26	3290-378	3	Tie-Cable

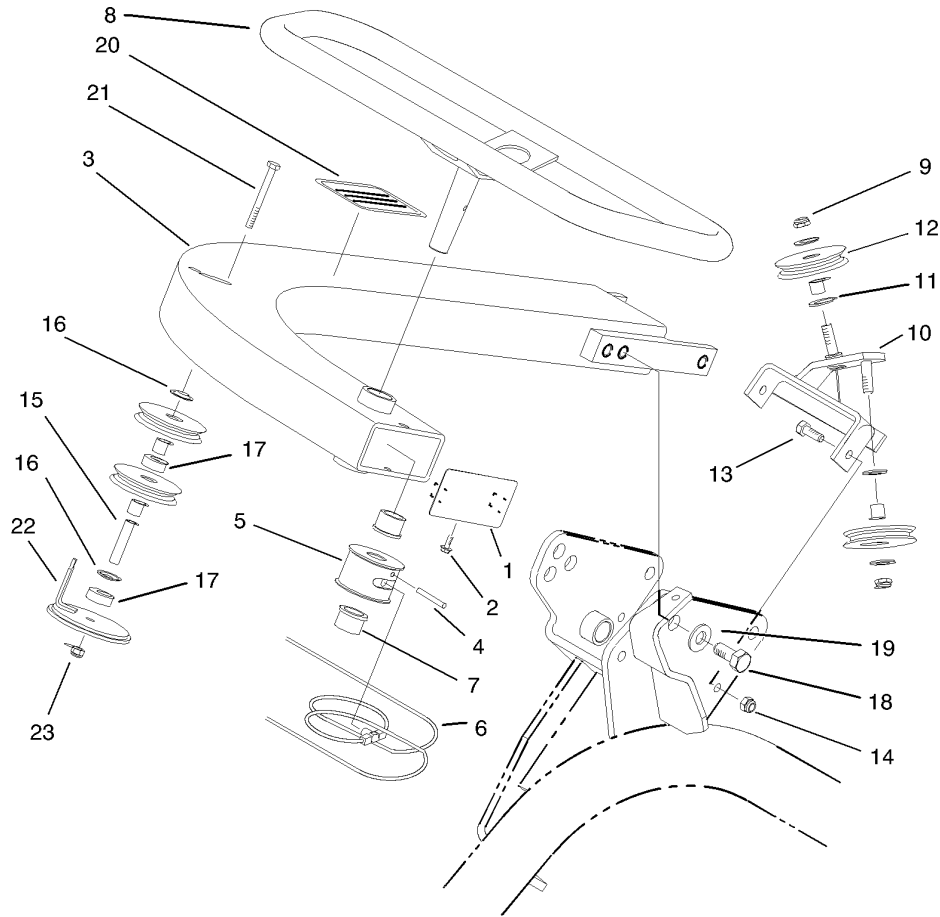


Hydraulic Wheel Motor Assembly No. 92-9199

Ref	Part No.	Qty.	Description
1	76-0860	1	Shaft-Coupling
2	76-0850	1	Bearing-Thrust
3	92-9761	1	Link-Drive
4	92-9762	7	Screw-HH
5	3257-42	1	Key-Woodruff
6	76-0870	1	Plate-Wear
7	76-0840	1	Manifold
8	76-0940	1	End Cover ASM
9	92-9763	1	Rotor Set
●9:1		1	Rotor
●9:2		1	Vane
●9:3		1	Stator
10	76-0880	1	Commutator ASM
●10:1		1	Seal-Commutator
●10:2		1	Commutator
●10:3		1	Ring-Commutator
11	94-8178	1	Seal Kit
●11:1		1	Seal-Dirt & Water
●11:2		1	Washer-Backup
●11:3		5	Seal-Ring
●11:4		1	Washer-Backup
●11:5		1	Seal-Inner
●11:6		1	Seal-Commutator
12	76-0810	1	Housing ASM

Ref	Part No.	Qty.	Description
●12:1		1	Bearing
●12:2		1	Housing
●12:3		2	Washer-Thrust
●12:4		1	Bearing-Thrust
●12:5		1	Bearing

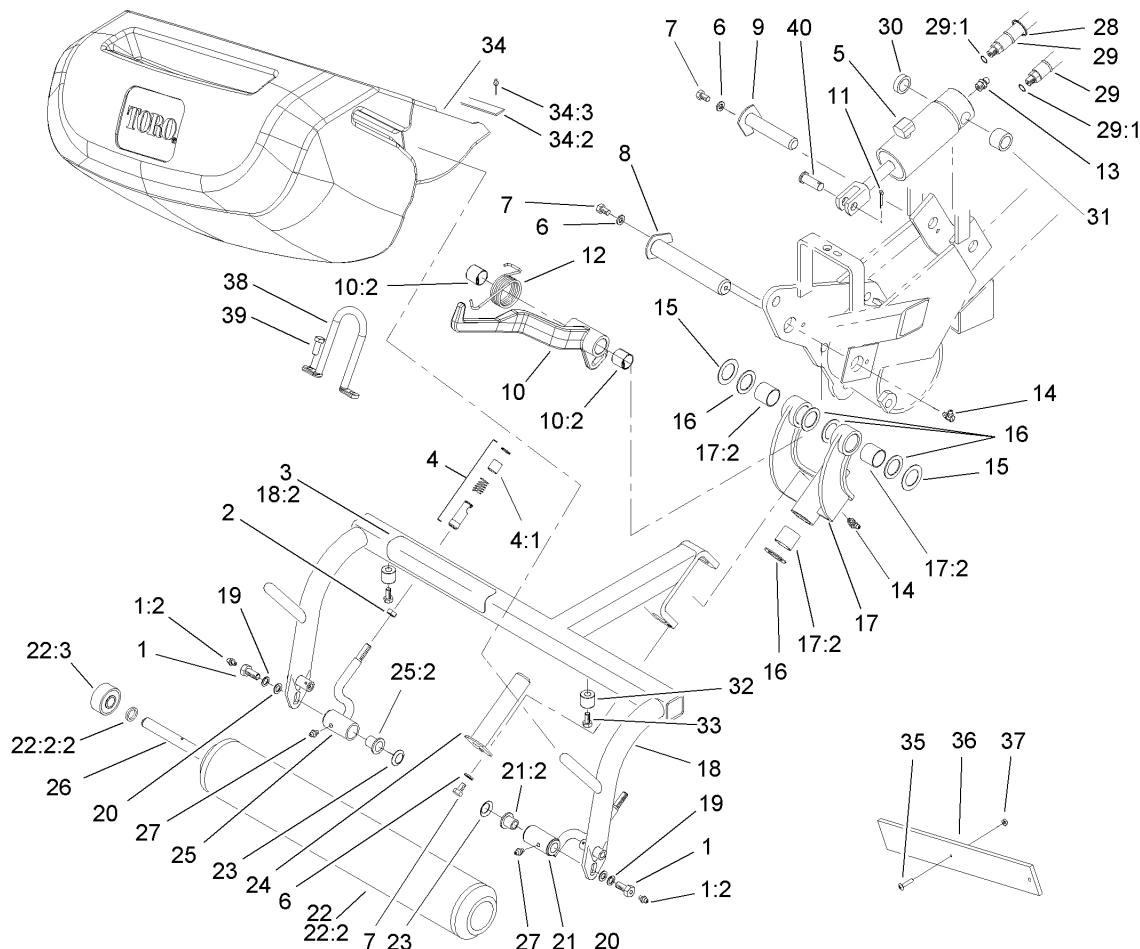
PROTOTYPE



Steering Arm Assembly

Ref	Part No.	Qty.	Description
1	95-7140-01	1	Tube Cap ASM
2	32104-76	2	Screw
3	95-2941-01	1	Steering Arm
4	32121-44	1	Pin-Roll
5	95-7149	1	Pulley-Front Steering
6	95-5965	1	Cable-Steering
7	256-113	2	Bushing-Flange
8	49-5900	1	Steering Wheel ASM
9	3296-59	2	Nut-Lock, NI
10	95-2932	1	Bracket-Pulley
11	3256-4	4	Washer-Flat
12	5-2653	4	Pulley ASM
13	322-4	2	Screw-HH
14	3296-29	2	Nut-Lock, NI
15	10-7240	1	Sleeve-Pulley, Steering
16	3290-314	2	Tinnerman
17	71-5440	2	Spacer-Wheel
18	325-2	4	Screw-HH
19	3256-26	4	Washer-Flat
20	93-8063	1	Decal-Caution, Ce
20	104-2053	1	Decal-Warning
21	321-15	1	Screw-HH
22	95-5959-01	1	Pulley Support
23	3296-16	1	Nut-Lock, NI

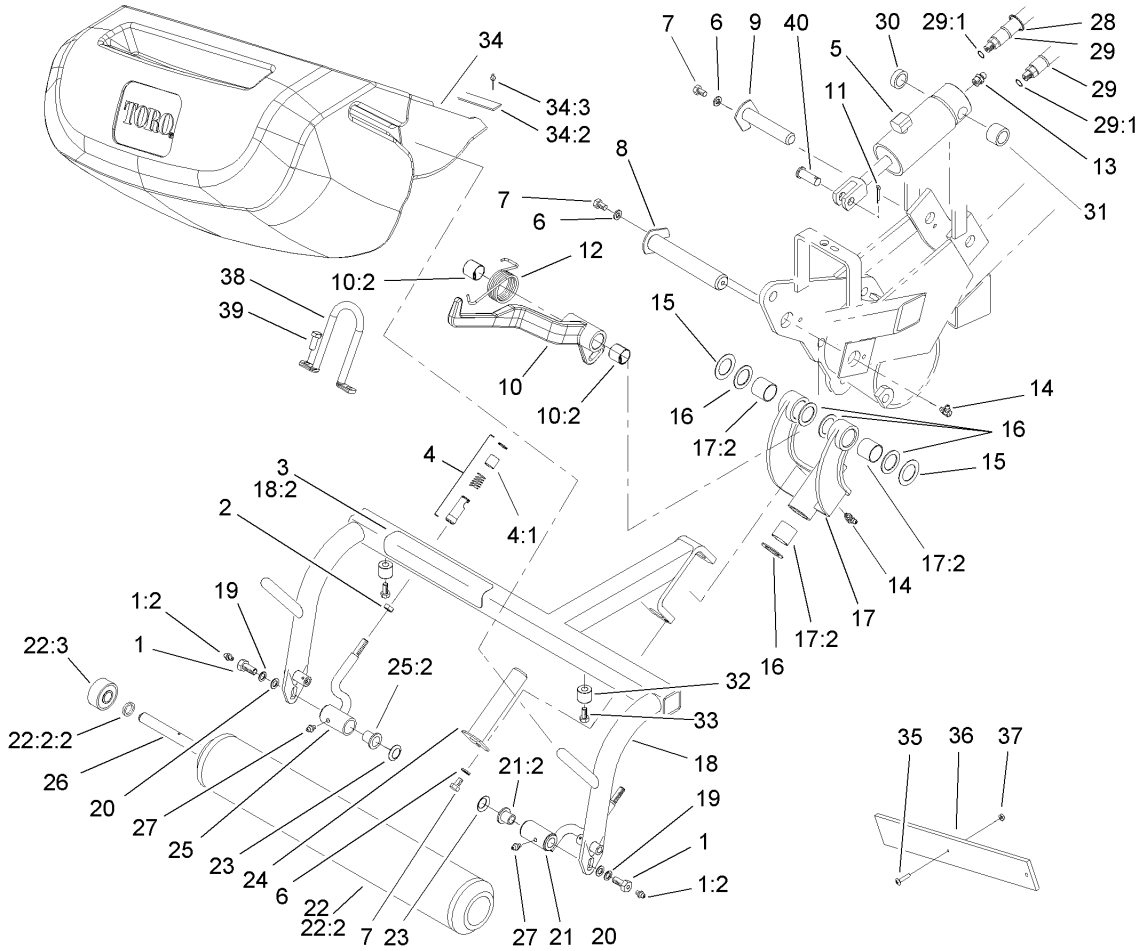
<p style="font-size: 48px; opacity: 0.5;">PROTOTYPE</p>			
---	--	--	--



Right-Hand Pull Frame Assembly

Ref	Part No.	Qty.	Description
1	11-0160	2	Roller Shaft Screw ASM
1:2	302-5	1	Fitting-Grease
2	3220-3	2	Nut-Jam
3	93-8064	1	Decal-Danger, Ce
4	99-1460	2	Ball Joint Receiver ASM
4:1	99-1461	1	Sleeve-Joint, Ball
5	106-9066	1	HYD Cylinder ASM
6	3256-23	3	Washer-Flat
7	322-1	3	Screw-HH
8	10-6110	1	Pin-Hinge
9	10-6060	1	Pin-Pivot, Ram
10	107-2599	1	RH Lift Arm ASM
10:2	3-0348	2	Bushing
11	3272-11	1	Pin-Cotter
12	106-9078	1	Spring-Torsion, RH
13	302-2	1	Fitting-Grease
14	302-60	2	Fitting-Grease
15	5-1226	2	Washer
16	10-8110	6	Washer-Thrust
17	10-7820	1	Pivot Hinge ASM
17:2	3-0348	4	Bushing
18	104-2055	1	Right Pull Frame ASM
18:2	62-5070	1	Decal-Warning
19	3253-21	2	Washer-Lock

Ref	Part No.	Qty.	Description
20	3256-24	2	Washer-Flat
21	92-0586	1	Pull Arm ASM
21:2	3-1506	2	Bushing
22	99-4277	1	Roller ASM
22:2	253-83	2	Hub Yoke ASM
22:2:2	253-83	1	Seal-Oil
22:3	251-141	2	Bearing-Ball
23	3290-317	2	Washer-Spring
24	10-6090	1	Pin-Pivot
25	92-0585	1	Pull Arm ASM
25:2	3-1506	2	Bushing
26	21-8470	1	Shaft-Roller
27	302-5	2	Fitting-Grease
28	3290-378	1	Tie-Cable
29	92-9767	2	Hose
29:1	237-78	1	O-Ring
30	105-3828	1	Spacer
31	74-3730	1	Spacer-Spindle, Rear
32	94-4548	2	Bumper-Recessed
33	32144-44	2	Screw-HWH
34	106-4687	3	Grass Basket ASM
34:2	104-2607	1	Strip-Basket
34:3	3290-382	8	Rivet-Pop
35	32122-22	1	Screw-HH

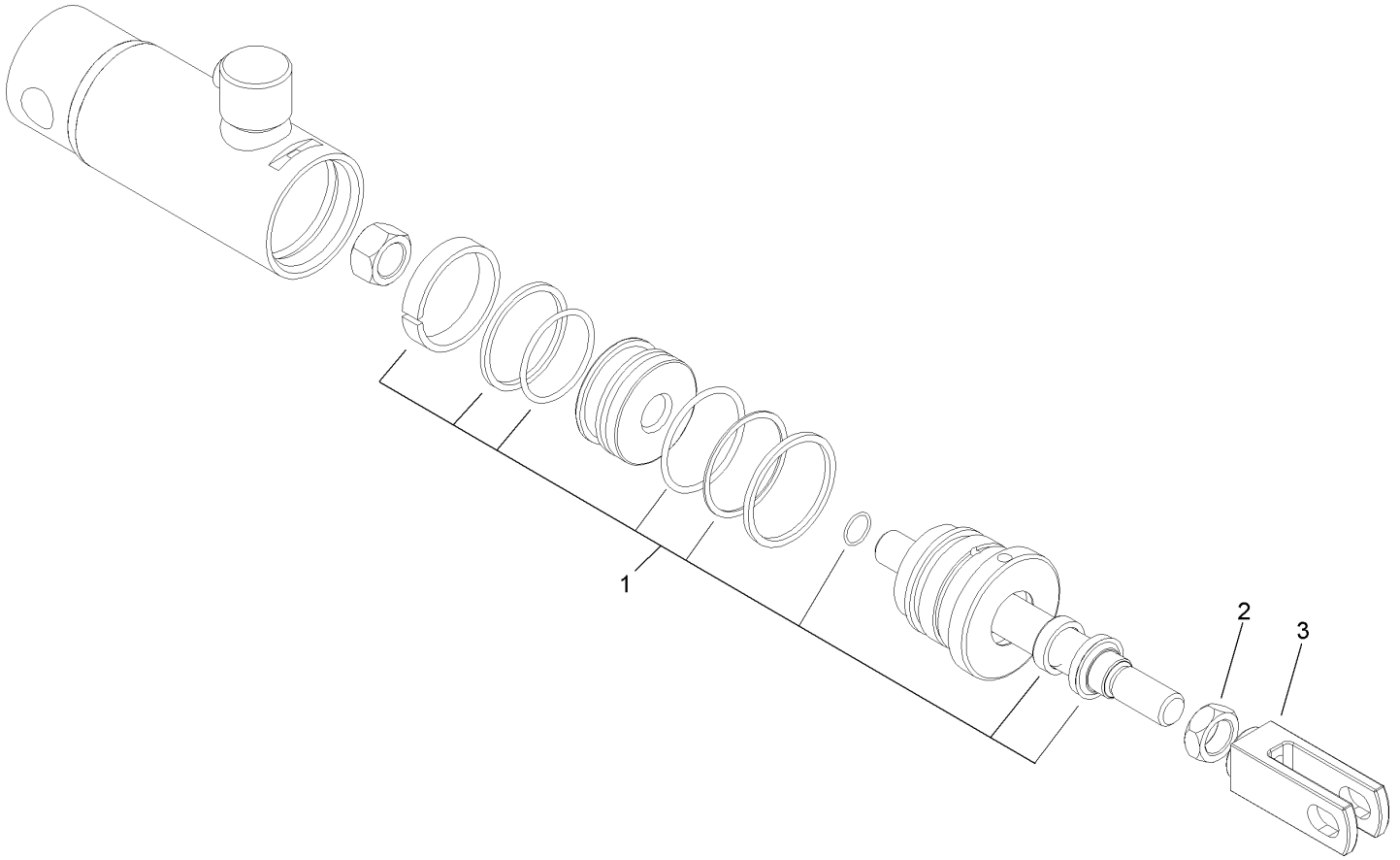


Right-Hand Pull Frame Assembly (continued)

Ref	Part No.	Qty.	Description
36	65-8320	1	Bar-Gauge
37	3219-14	1	Nut-Hex
38	105-5740	1	Hook-Lift
39	33115-025	2	Screw-HH
40	283-8	1	Pin-Clevis

--	--	--	--

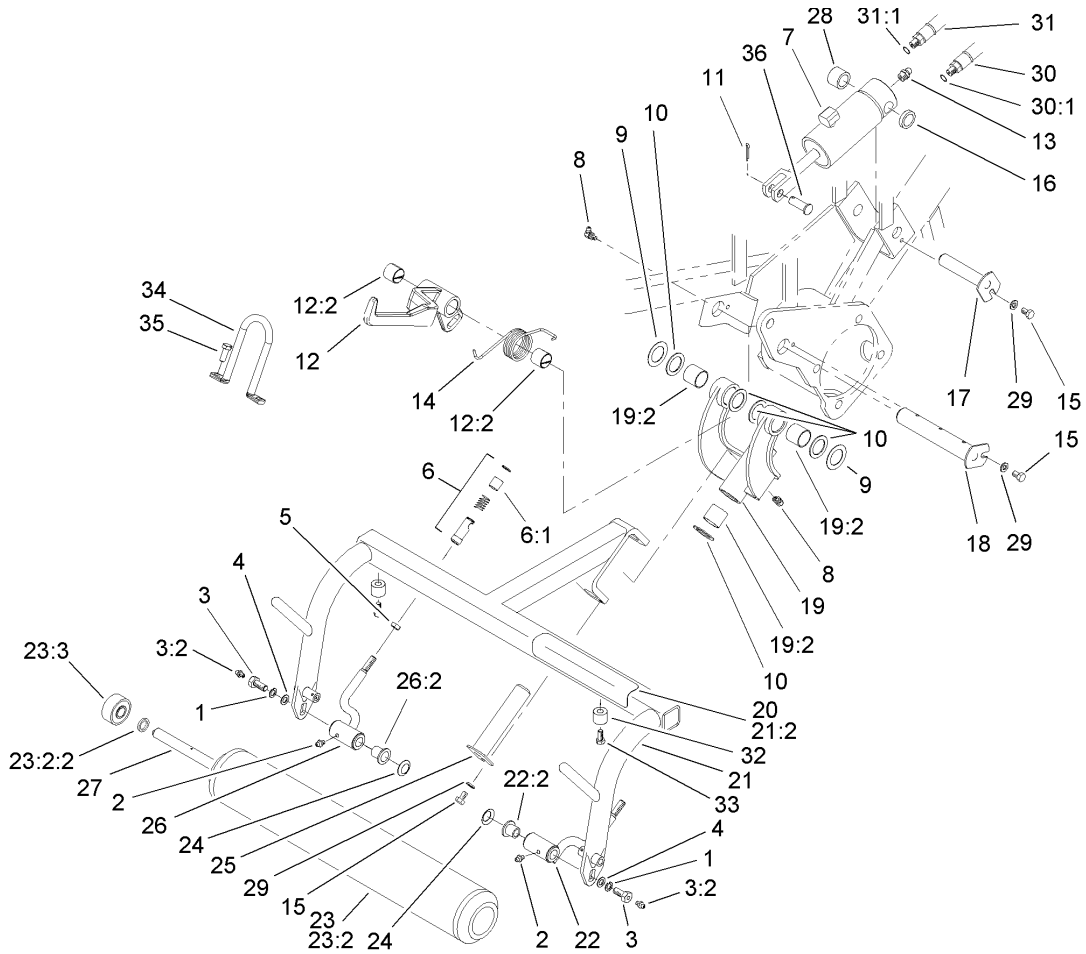
PROTOTYPE



Hydraulic Cylinder Assembly No. 106-9066

Ref	Part No.	Qty.	Description
1	107-2564	1	Seal Kit
2	3220-6	1	Nut-Jam
3	106-9065	1	Clevis-Cylinder

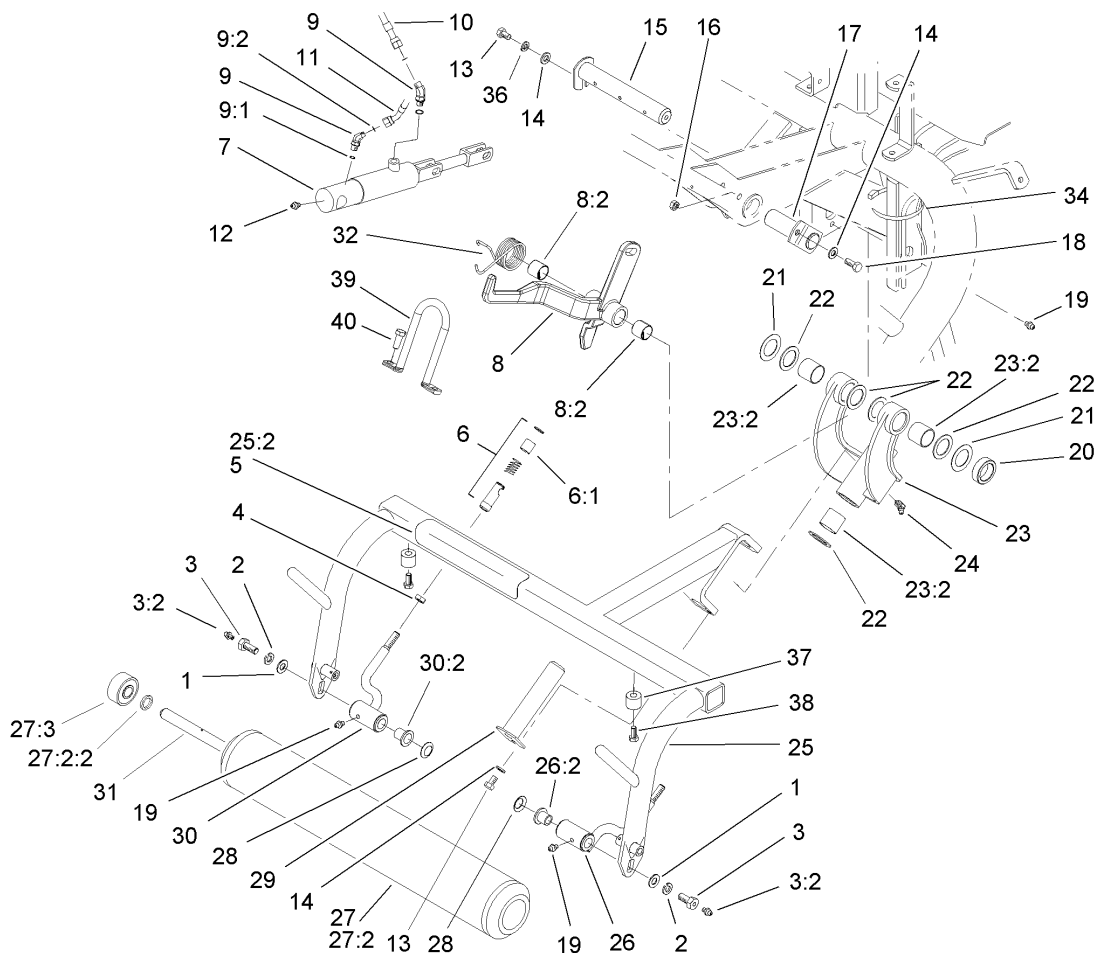
PROTOTYPE



Left-Hand Pull Frame Assembly

Ref	Part No.	Qty.	Description
1	3253-21	2	Washer-Lock
2	302-5	2	Fitting-Grease
3	11-0160	2	Roller Shaft Screw ASM
3:2	302-5	1	Fitting-Grease
4	3256-24	2	Washer-Flat
5	3220-3	2	Nut-Jam
6	99-1460	2	Ball Joint Receiver ASM
6:1	99-1461	1	Sleeve-Joint, Ball
7	106-9066	1	HYD Cylinder ASM
8	302-60	2	Fitting-Grease
9	5-1226	2	Washer
10	10-8110	6	Washer-Thrust
11	3272-11	1	Pin-Cotter
12	107-2598	1	LH Lift Arm ASM
12:2	3-0348	2	Bushing
13	302-2	1	Fitting-Grease
14	106-9079	1	Spring-Torsion, LH
15	322-1	3	Screw-HH
16	105-3828	1	Spacer
17	10-6060	1	Pin-Pivot, Ram
18	10-6110	1	Pin-Hinge
19	10-7820	1	Pivot Hinge ASM
19:2	3-0348	4	Bushing
20	93-8064	1	Decal-Danger, Ce

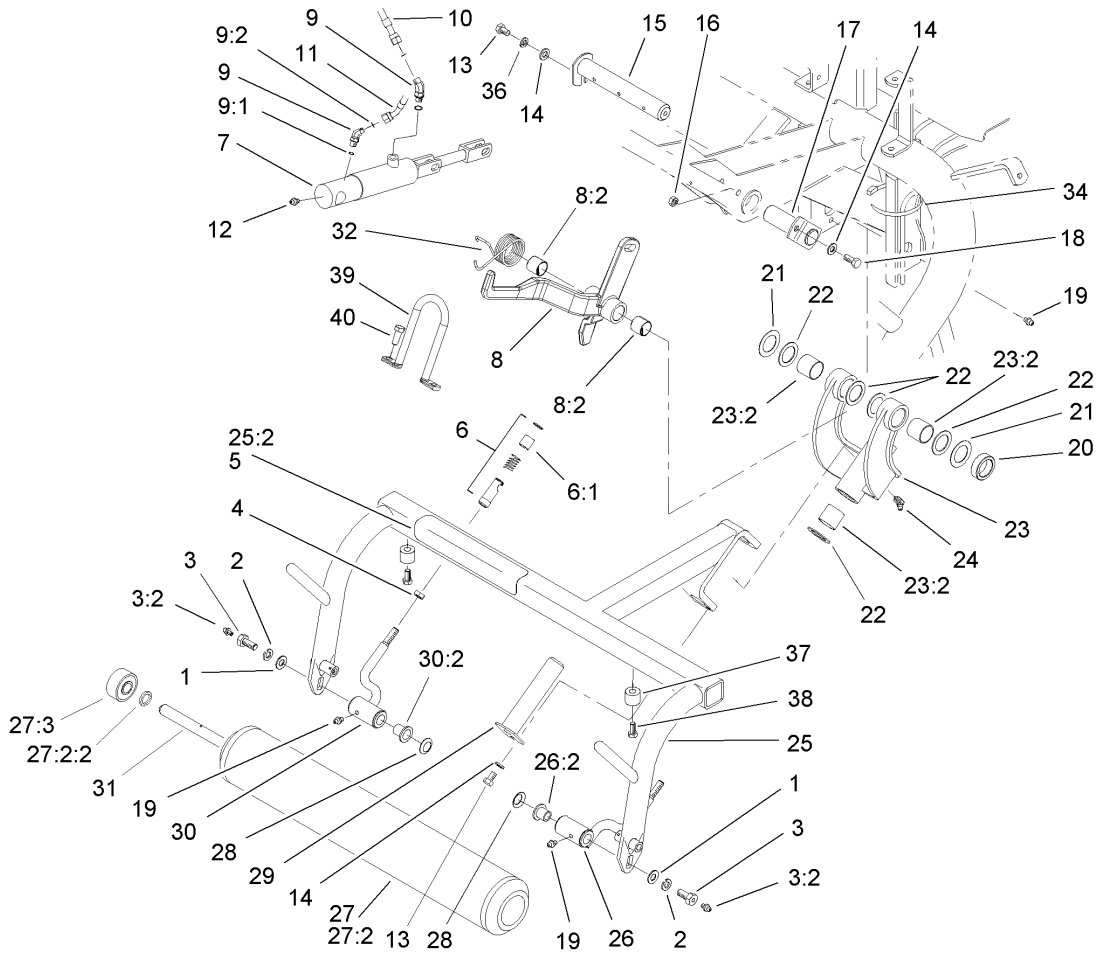
Ref	Part No.	Qty.	Description
21	104-2054	1	Left Pull Frame ASM
21:2	62-5070	1	Decal-Warning
22	92-0586	1	Pull Arm ASM
22:2	3-1506	2	Bushing
23	99-4277	1	Roller ASM
23:2		2	Hub Yoke ASM
23:2:2	253-83	1	Seal-Oil
23:3	251-141	2	Bearing-Ball
24	3290-317	2	Washer-Spring
25	10-6090	1	Pin-Pivot
26	92-0585	1	Pull Arm ASM
26:2	3-1506	2	Bushing
27	21-8470	1	Shaft-Roller
28	74-3730	1	Spacer-Spindle, Rear
29	3256-23	3	Washer-Flat
30	83-1690	1	Hose-HYD
30:1	237-78	1	O-Ring
31	63-3850	1	Hose ASM
31:1	237-78	1	O-Ring
32	94-4548	2	Bumper-Recessed
33	32144-44	2	Screw-HWH
34	105-5740	1	Hook-Lift
35	33115-025	2	Screw-HH
36	283-8	1	Pin-Clevis



Rear Pull Frame Assembly

Ref	Part No.	Qty.	Description
1	3256-24	2	Washer-Flat
2	3253-21	2	Washer-Lock
3	11-0160	2	Roller Shaft Screw ASM
3:2	302-5	1	Fitting-Grease
4	3220-3	2	Nut-Jam
5	93-8064	1	Decal-Danger, Ce
6	99-1460	2	Ball Joint Receiver ASM
6:1	99-1461	1	Sleeve-Joint, Ball
7	106-9064	1	HYD Cylinder ASM
8	107-9500	1	Center Lift Arm ASM
8:2	3-0348	2	Bushing
9	340-103	2	Fitting-Hyd, 45 DEG
9:1	237-78	1	O-Ring
9:2	237-21	1	O-Ring
10	83-1680	1	Hose-HYD
11	88-9700	1	Hose-HYD
12	302-2	1	Fitting-Grease
13	322-1	2	Screw-HH
14	3256-23	3	Washer-Flat
15	27-2550	1	Pin-Hinge
16	3296-29	1	Nut-Lock, NI
17	68-5560	1	Pin-Cylinder, Pivot
18	322-3	1	Screw-HH
19	302-5	3	Fitting-Grease

Ref	Part No.	Qty.	Description
20	93-2384	1	Spacer-Carrier
21	5-1226	2	Washer
22	10-8110	6	Washer-Thrust
23	105-0452	1	Pivot Hinge ASM
23:2	3-0348	4	Bushing
24	302-60	1	Fitting-Grease
25	105-0451	1	Rear Pull Frame ASM
25:2	62-5070	1	Decal-Warning
26	92-0586	1	Pull Arm ASM
26:2	3-1506	2	Bushing
27	99-4277	1	Roller ASM
27:2		2	Hub Yoke ASM
27:2:2	253-83	1	Seal-Oil
27:3	251-141	2	Bearing-Ball
28	3290-317	2	Washer-Spring
29	10-6090	1	Pin-Pivot
30	92-0585	1	Pull Arm ASM
30:2	3-1506	2	Bushing
31	21-8470	1	Shaft-Roller
32	106-9080	1	Spring-Torsion, Center
34	3290-379	1	Tie-Cable
36	3253-4	1	Washer-Lock
37	94-4548	2	Bumper-Recessed
38	32144-44	2	Screw-HWH

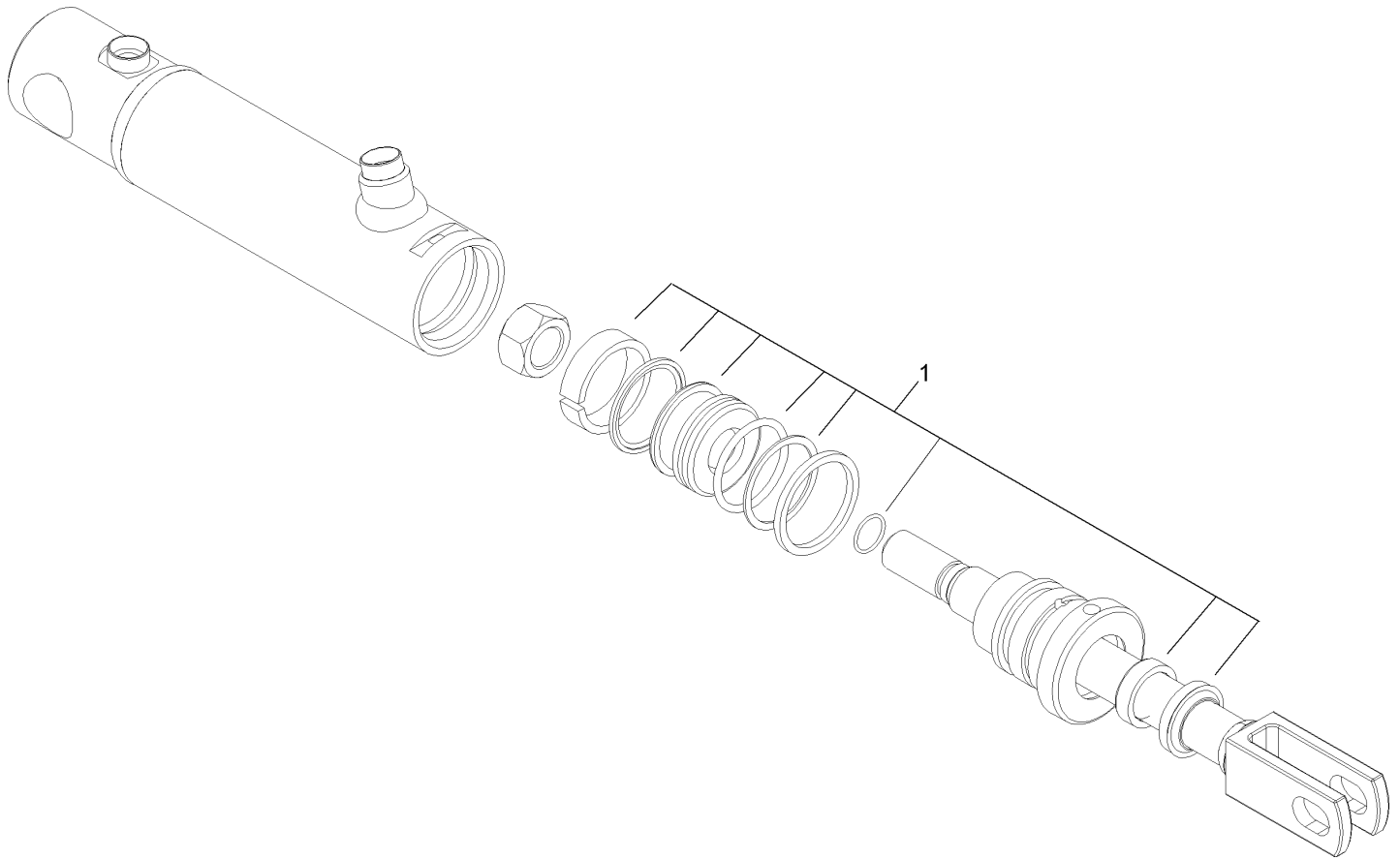


Rear Pull Frame Assembly (continued)

Ref	Part No.	Qty.	Description
39	105-5740	1	Hook-Lift
40	33115-025	2	Screw-HH

--	--	--	--

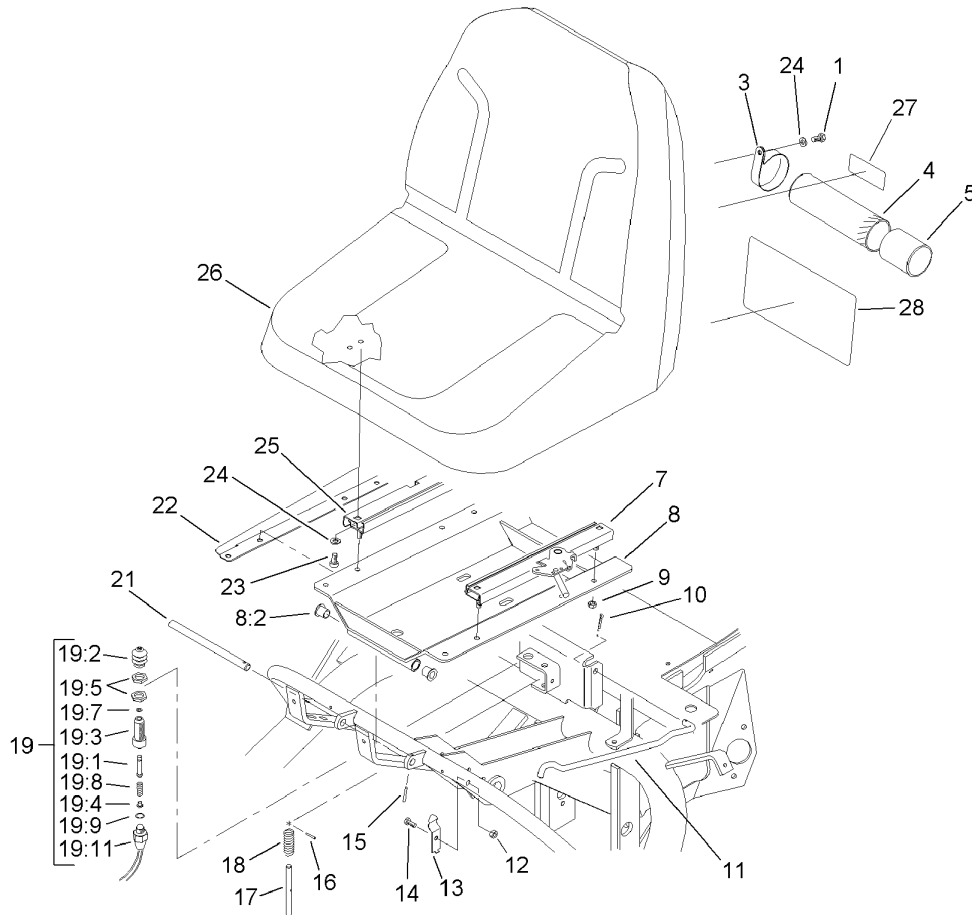
PROTOTYPE



Hydraulic Cylinder Assembly No. 106-9064

Ref	Part No.	Qty.	Description				
1	107-2563	1	Seal Kit				

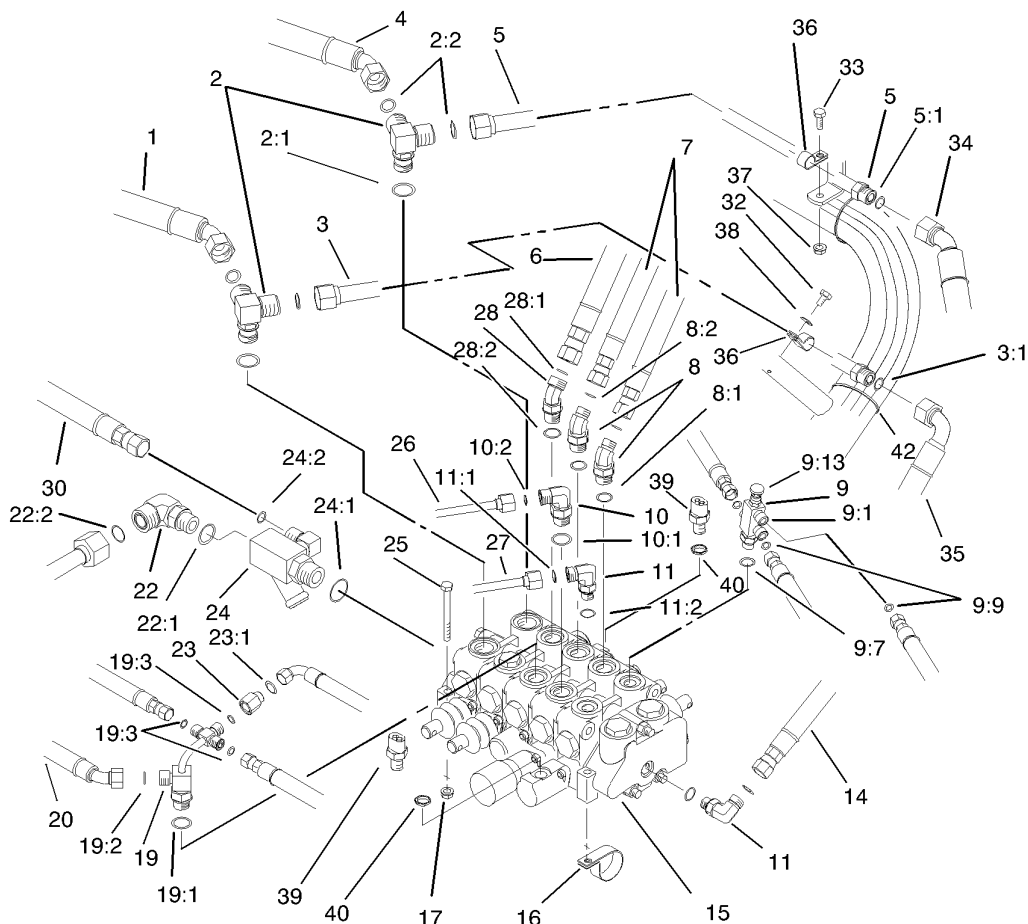
PROTOTYPE



Seat Assembly

Ref	Part No.	Qty.	Description
1	322-2	2	Screw-HH
3	2412-133	2	R-Clamp
4	104-7050	1	Housing-Manual
5	104-7048	1	Cap-Housing
7	51-0790	1	Adjuster-Seat, LH
8	83-1270	1	Seat Support ASM
8:2	256-155	2	Bushing-Flange
9	3296-29	4	Nut-Lock, NI
10	3272-11	1	Pin-Cotter
11	68-5100	1	Rod-Seat, Prop
12	3296-16	1	Nut-Lock, NI
13	68-5310	1	Clip-Rod, Prop
14	321-3	1	Screw-HH
15	32121-45	1	Pin-Spring
16	3284-3	1	Pin-Groove
17	51-0350	1	Pin-Spring, Seat
18	3-6685	1	Spring
19	43-9071	1	Limit Switch ASM
19:1	43-8860	1	Plunger-Switch
19:2	43-8870	1	Boot-Switch
19:3	43-8620	1	Pin-Guide, Switch
19:4	43-8610	1	Guide
19:5	218-461	2	Nut-HH
19:7	237-7	1	O-Ring

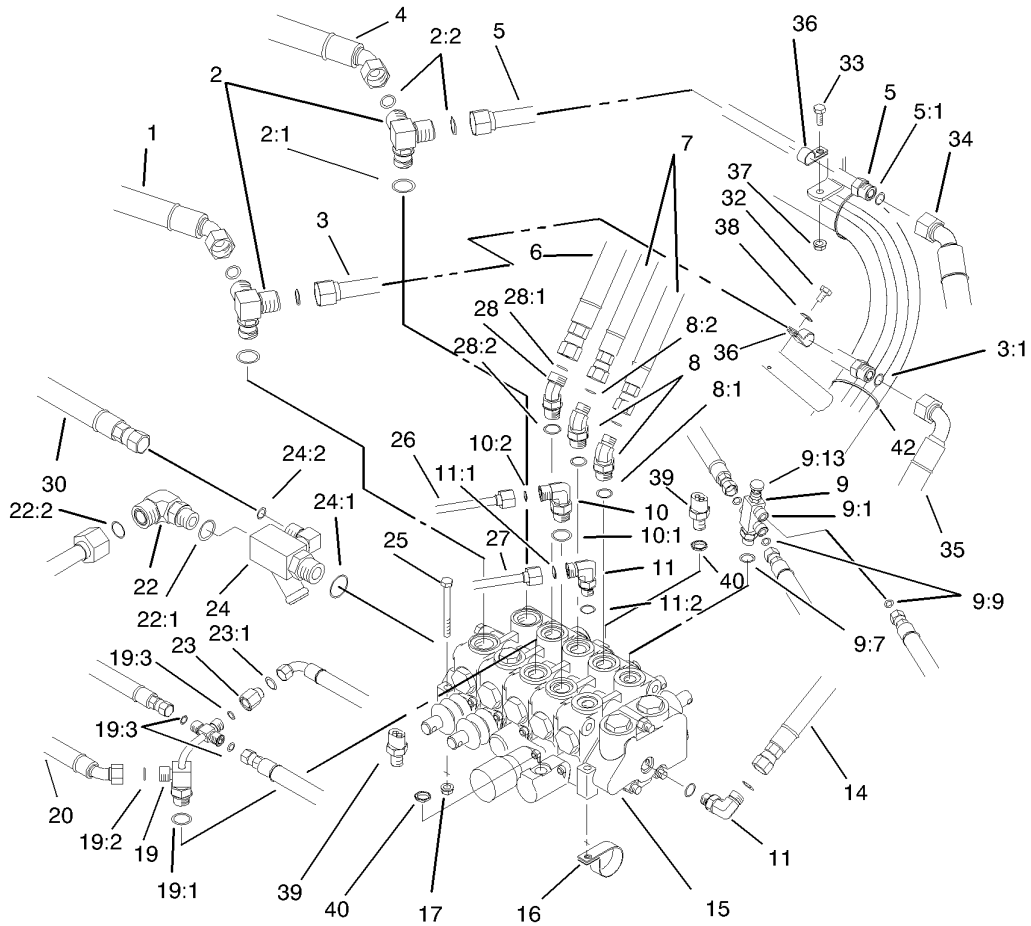
Ref	Part No.	Qty.	Description
19:8	43-8600	1	Spring-Compression
19:9	237-30	1	O-Ring
19:11	72-4320	1	Switch-Ball, N.o.
21	49-5880	1	Shaft-Support, Seat
22	83-1840-01	1	Cover-Valve, RH
23	3274-12	4	Screw-HSH
24	3256-23	6	Washer-Flat
25	51-0780	1	Slider-Seat
26	100-3187	1	Seat ASM
27	93-6686	1	Decal-Oil, HYD
28	106-9071	1	Decal-Service
28	106-9072	1	Decal-Service, Spanish
28	106-9073	1	Decal-Service, French
28	106-9074	1	Decal-Service, German
28	106-9075	1	Decal-Service, Japanese



Control Valve Installation Assembly

Ref	Part No.	Qty.	Description
1	98-0647	1	Hose-HYD
2	63-4050	2	Fitting
2:1	237-80	1	O-Ring
2:2	237-65	2	O-Ring
3	70-7130	1	Line-Tube
3:1	237-65	2	O-Ring
4	98-0646	1	Hose-HYD
5	83-1200	1	Tube-Traction, LH Lower
5:1	237-65	1	O-Ring
6	98-2151	1	Hose-HYD
7	98-0649	2	Hose-HYD
8	340-138	2	Fitting-Hyd, 45 DEG
8:1	237-79	1	O-Ring
8:2	237-22	1	O-Ring
9	93-2556	1	Needle Valve ASM
9:1	93-2555	1	Fitting-Body
9:7	237-42	1	O-Ring
9:9	237-21	3	O-Ring
9:13	93-2554	1	Needle ASM
10	340-18	1	Fitting-Hyd, 90 DEG
10:1	237-79	1	O-Ring
10:2	237-22	1	O-Ring
11	340-77	2	Fitting-Hyd, 90 DEG
11:1	237-22	1	O-Ring

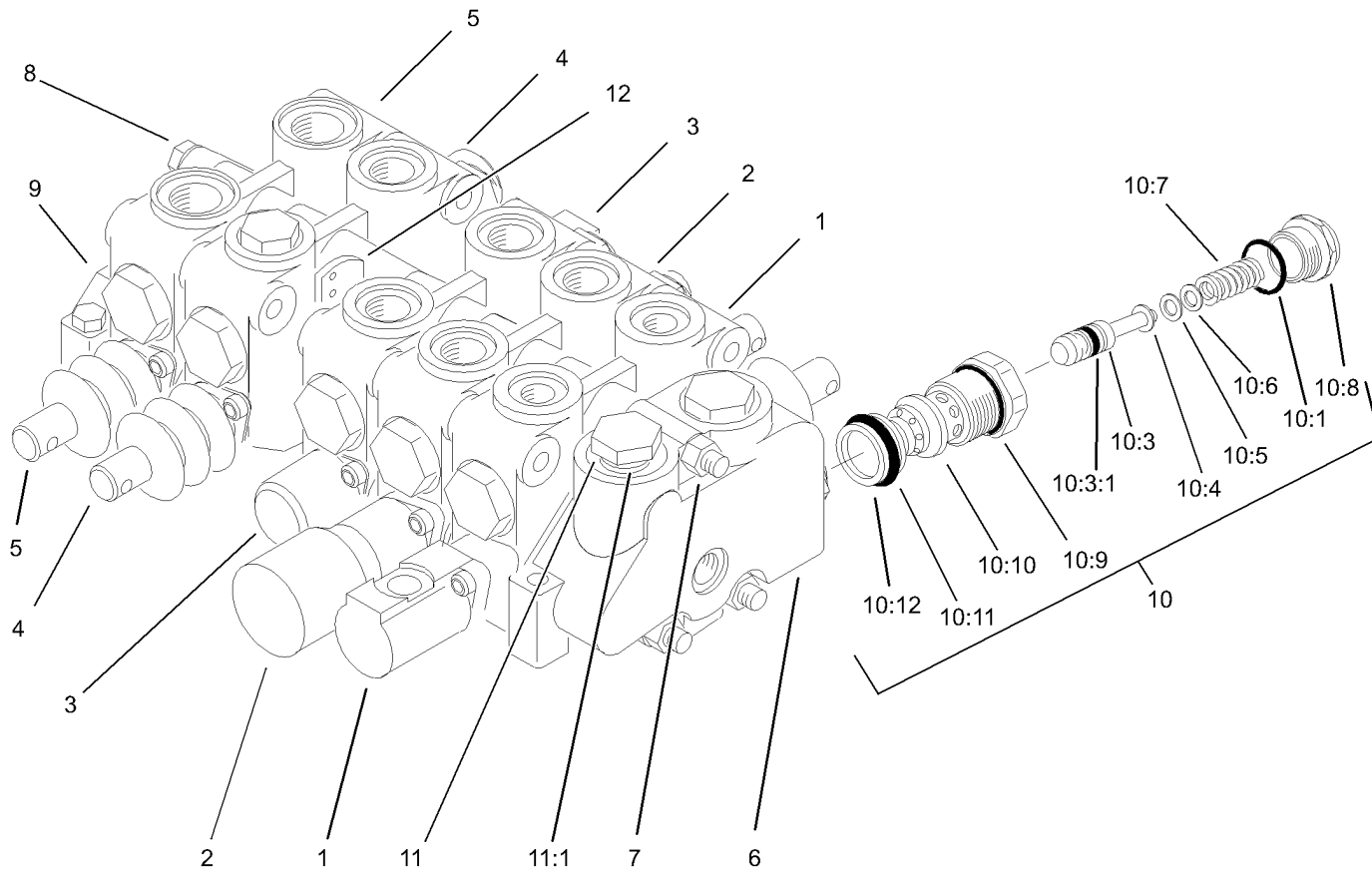
Ref	Part No.	Qty.	Description
11:2	237-42	1	O-Ring
14	98-2150	1	Hose-HYD
15	105-3800	1	Control Valve ASM
16	304-61	1	Clamp-Hose
17	32128-20	3	Nut-HF
19	83-1670	1	Fitting ASM
19:1	237-79	1	O-Ring
19:2	237-22	1	O-Ring
19:3	237-21	3	O-Ring
20	95-5986	1	Hose-HYD
22	340-16	1	Fitting-Hyd, 90
22:1	237-80	1	O-Ring
22:2	237-58	1	O-Ring
23	71-0990	1	Orifice
23:1	237-21	1	O-Ring
24	63-4080	1	Manifold Fitting
24:1	237-81	1	O-Ring
24:2	237-30	1	O-Ring
25	322-14	3	Screw-HH
26	63-4030	1	Tube-HYD
27	63-4020	1	Tube-HYD
28	340-101	1	Fitting-Hyd, 45 DEG
28:1	237-30	1	O-Ring
28:2	237-79	1	O-Ring



Control Valve Installation Assembly (continued)

Ref	Part No.	Qty.	Description
30	95-5987	1	Hose-HYD
32	12-3270	1	Screw
33	3234-4	1	Screw-HHF
34	98-0648	1	HYD Hose ASM
35	98-2153	1	HYD Hose ASM
36	2412-41	2	Clamp
37	3296-16	1	Nut-Lock, NI
38	3256-22	1	Washer-Flat
39	83-1890	2	Switch-Ball
40	38-0410	2	Nut-Hex
42	3290-379	2	Tie-Cable

<p style="font-size: 48px; opacity: 0.5;">PROTOTYPE</p>			
---	--	--	--

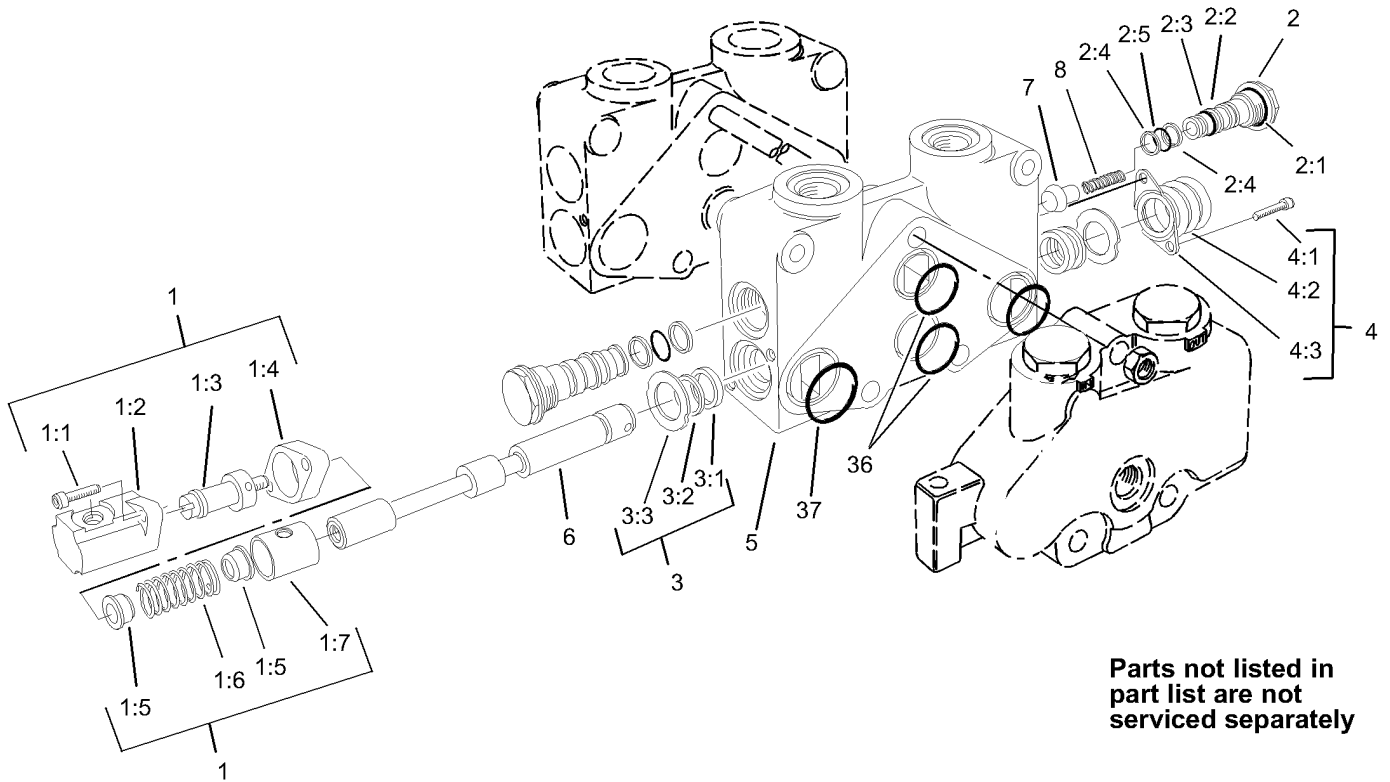


Control Valve Assembly No. 105-3800

Ref	Part No.	Qty.	Description
1	105-3801	1	Section 1 ASM
2	105-3802	1	Section 2 ASM
3	105-3803	1	Section 3 ASM
4	105-3804	1	Section 4 ASM
5	93-1386	1	Section 5 ASM
6	353-772	1	Cover-Left
7	3217-7	3	Nut-Hex
8	353-853	3	Bolt
9	353-668	1	Plate-Cover
10	353-766	1	Cart-Relief
10:1	237-54	1	O-Ring
10:3	353-531	1	Poppet And Ring ASM
10:3:1	353-392	1	Ring-Piston
10:4	353-328	1	Shim (.040)
10:5	353-329	1	Shim (.020)
10:6	353-330	1	Shim (.010)
10:7	353-855	1	Spring
10:8	353-334	1	Cap-Relief
10:9	353-331	1	O-Ring
10:10	353-760	1	Relief-Body
10:11	353-758	1	O-Ring
10:12	353-952	1	Seal-Back-Up
11	353-721	2	Plug
11:1	237-54	1	O-Ring

Ref	Part No.	Qty.	Description
12	354-122	1	Disc-Seal
● 13	92-2545	1	Spool Set Kit
● 14	84-2190	1	Section Seal Kit
● 14:1		12	O-Ring
● 14:2		12	O-Ring
● 14:3		16	O-Ring
● 14:4		8	O-Ring
● 14:5		1	Disc-Seal
● 14:6		1	Disc-Seal

PROTOTYPE



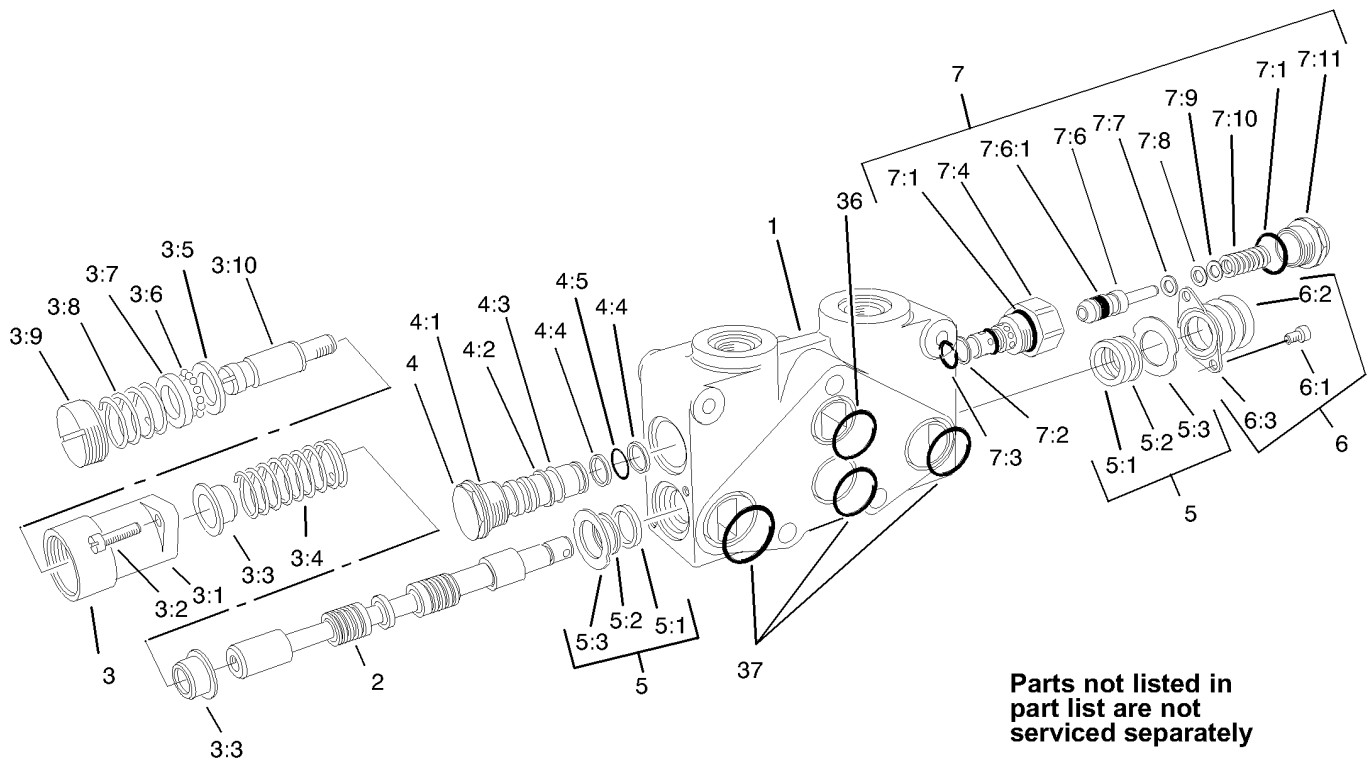
Parts not listed in part list are not serviced separately

Section 1 Assembly No. 105-3801

Ref	Part No.	Qty.	Description
1	105-3807	1	Positioner-Interlock
1:1	3274-70	2	Screw-HSH
1:2	353-727	1	Bonnet-Special
1:3	104-7739	1	Spud-V20
1:4	353-733	1	Spacer-Bonnet
1:5	353-417	2	Collar-Stop
1:6	104-7741	1	Spring
1:7	353-728	1	Sleeve
2	353-481	2	Lift Check ASM
2:1	237-54	1	O-Ring
2:2	353-306	1	Washer-Backup
2:3	353-305	1	O-Ring
2:4	353-303	2	Washer-Backup
2:5	353-302	1	O-Ring
3	92-2548	2	Spool Set Kit
3:1	353-957	1	Cup-Seal
3:2	92-2546	1	Wiper-Seal
3:3	92-2547	1	Seal-Retainer
4	93-3652	1	Boot-Dust
4:1	3274-52	2	Screw-HSH
4:2	353-575	1	Boot
4:3	93-3651	1	Retainer-Boot
●5		1	Housing-V20c
●6		1	Spool-V20c

Ref	Part No.	Qty.	Description
7	353-301	1	Check-Lift, Poppet
8	353-304	1	Spring-Check, Lift
●36		2	O-Ring
●37		2	O-Ring

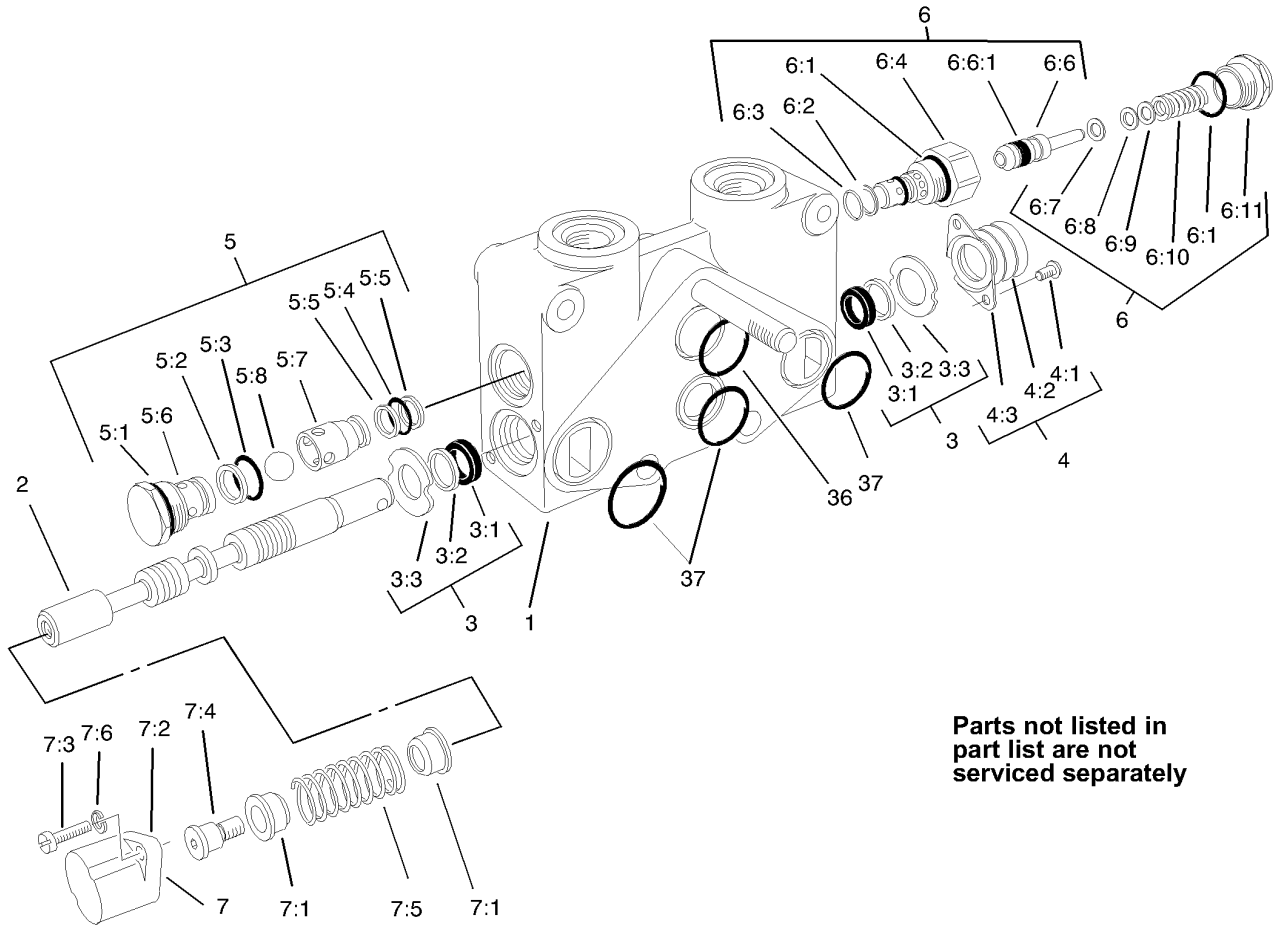
PROTOTYPE



Section 2 Assembly No. 105-3802

Ref	Part No.	Qty.	Description
①		1	Housing-V20t
②		1	Spool-V20
3	105-3806	1	Positioner
3:1	99-8181	1	Bonnet-R
3:2	3274-15	2	Screw-HSH
3:3	353-417	2	Collar-Stop
3:4	104-7741	1	Spring
3:5	354-29	1	Plate-Thrust
3:6	52-5880	12	Ball-Detent
3:7	42-2680	1	Race-Ball
3:8	104-7727	1	Spring-Detent
3:9	353-763	1	Cap-Adjustment
3:10	353-762	1	Spud-Out
4	353-481	1	Lift Check ASM
4:1	237-54	1	O-Ring
4:2	353-306	1	Washer-Backup
4:3	353-305	1	O-Ring
4:4	353-303	2	Washer-Backup
4:5	353-302	1	O-Ring
5	92-2548	2	Spool Set Kit
5:1	353-957	1	Cup-Seal
5:2	92-2546	1	Wiper-Seal
5:3	92-2547	1	Seal-Retainer
6	93-3652	1	Boot-Dust

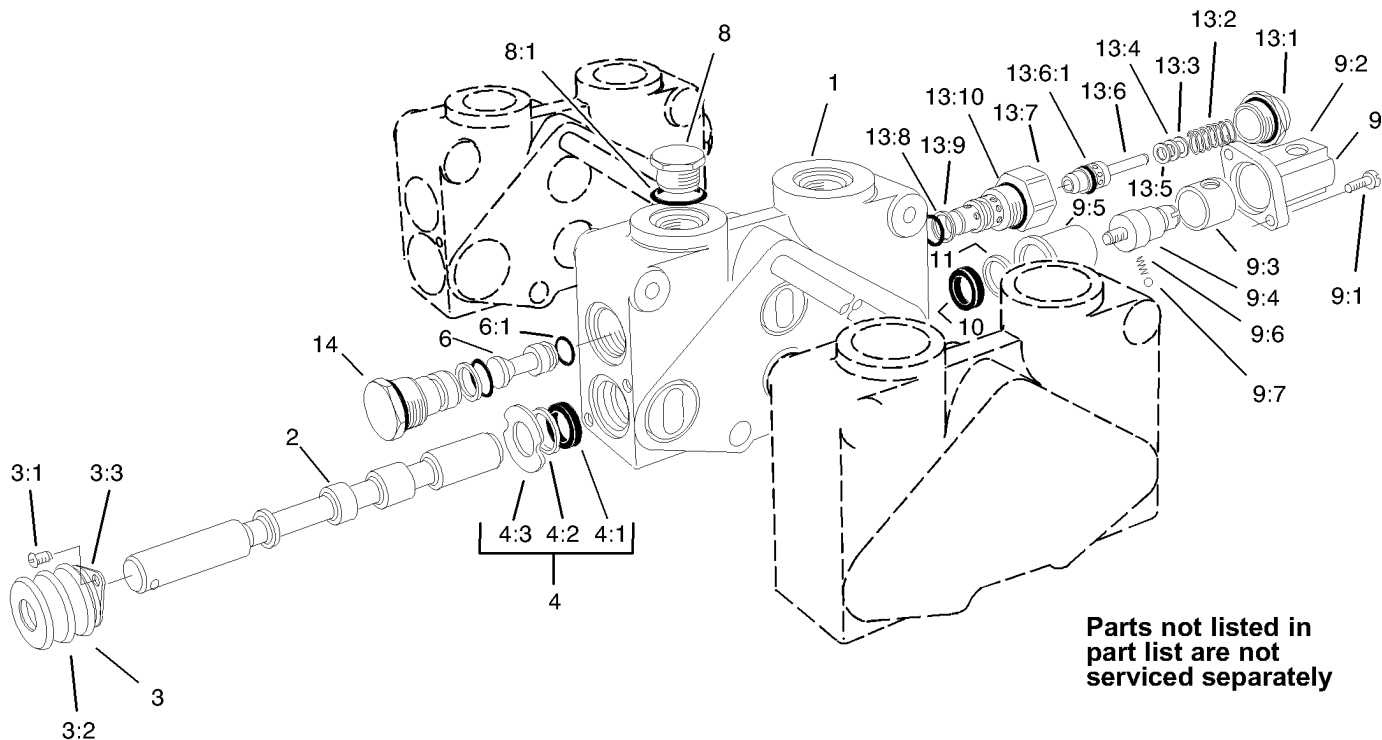
Ref	Part No.	Qty.	Description
6:1	3274-52	2	Screw-HSH
6:2	353-575	1	Boot
6:3	93-3651	1	Retainer-Boot
7	353-642	1	Cartridge-Relief
7:1	237-54	2	O-Ring
7:2	353-306	1	Washer-Backup
7:3	353-305	1	O-Ring
7:4	353-851	1	Body-Relief
7:6	353-531	1	Poppet And Ring ASM
7:6:1	353-392	1	Ring-Piston
7:7	353-328	1	Shim (.040)
7:8	353-329	1	Shim (.020)
7:9	353-330	1	Shim (.010)
7:10	353-398	1	Spring
7:11	353-334	1	Cap-Relief
③6		1	O-Ring
③7		3	O-Ring



Section 3 Assembly No. 105-3803

Ref	Part No.	Qty.	Description
①		1	Housing-V20t
②		1	Spool-V20
3	92-2548	2	Spool Set Kit
3:1	353-957	1	Cup-Seal
3:2	92-2546	1	Wiper-Seal
3:3	92-2547	1	Seal-Retainer
4	93-3652	1	Boot-Dust
4:1	3274-52	2	Screw-HSH
4:2	353-575	1	Boot
4:3	93-3651	1	Retainer-Boot
5	354-129	1	Anticavitation Check ASM
5:1	237-54	1	O-Ring
5:2	353-306	1	Washer-Backup
5:3	353-305	1	O-Ring
5:4	353-302	1	O-Ring
5:5	353-303	2	Washer-Backup
5:6	353-483	1	Body-Check
5:7	353-484	1	Return-Ball, Check
5:8	353-737	1	Ball-Check
6	353-642	1	Cartridge-Relief
6:1	237-54	2	O-Ring
6:2	353-306	1	Washer-Backup
6:3	353-305	1	O-Ring
6:4	353-851	1	Body-Relief

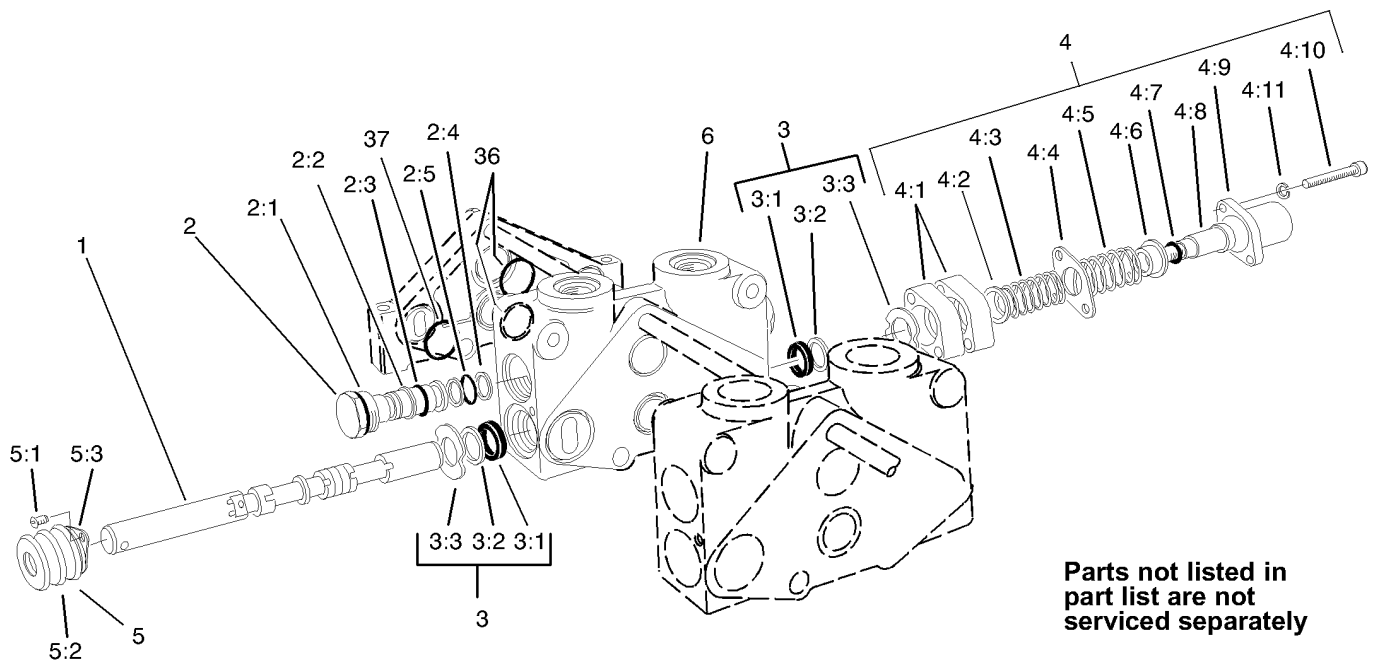
Ref	Part No.	Qty.	Description
6:6	353-531	1	Poppet And Ring ASM
6:6:1	353-392	1	Ring-Piston
6:7	353-328	1	Shim (.040)
6:8	353-329	1	Shim (.020)
6:9	353-330	1	Shim (.010)
6:10	353-398	1	Spring
6:11	353-334	1	Cap-Relief
7	105-3808	1	Positioner-Spring Return
7:1	353-417	2	Collar-Stop
7:2	99-6895	1	Bonnet
7:3	52-5900	2	Screw
7:4	52-5860	1	Collar-Spool
7:5	104-7741	1	Spring
7:6	3253-3	2	Washer-Lock
③6		1	O-Ring
③7		3	O-Ring



Section 4 Assembly No. 105-3804

Ref	Part No.	Qty.	Description
①		1	Housing-V20p
②		1	Spool-V20
3	93-3652	1	Boot-Dust
3:1	3274-52	2	Screw-HSH
3:2	353-575	1	Boot
3:3	93-3651	1	Retainer-Boot
4	92-2548	1	Spool Set Kit
4:1	353-957	1	Cup-Seal
4:2	92-2546	1	Wiper-Seal
4:3	92-2547	1	Seal-Retainer
6	353-844	1	Plug
6:1	353-850	1	O-Ring
8	353-550	1	Plug-HYD
8:1	237-79	1	O-Ring
9	353-840	1	Switch Positioner Bonnet ASM
9:1	52-5900	2	Screw
9:2	353-847	1	Bonnet
9:3	353-849	1	Sleeve
9:4	353-846	1	Spud
9:5	353-845	1	Sleeve-Detent
9:6	353-730	1	Spring
9:7	353-731	2	Ball
10	353-957	1	Cup-Seal
11	353-958	1	Washer

Ref	Part No.	Qty.	Description
13	354-140	1	Relief-Rcm
13:1	353-334	1	Cap-Relief
13:2	353-398	1	Spring
13:3	353-330	1	Shim (.010)
13:4	353-329	1	Shim (.020)
13:5	353-328	1	Shim (.040)
13:6	353-531	1	Poppet And Ring ASM
13:6:1	353-392	1	Ring-Piston
13:7	353-851	1	Body-Relief
13:8	353-305	1	O-Ring
13:9	353-306	1	Washer-Backup
13:10	237-54	2	O-Ring
14	353-953	1	Plug ASM

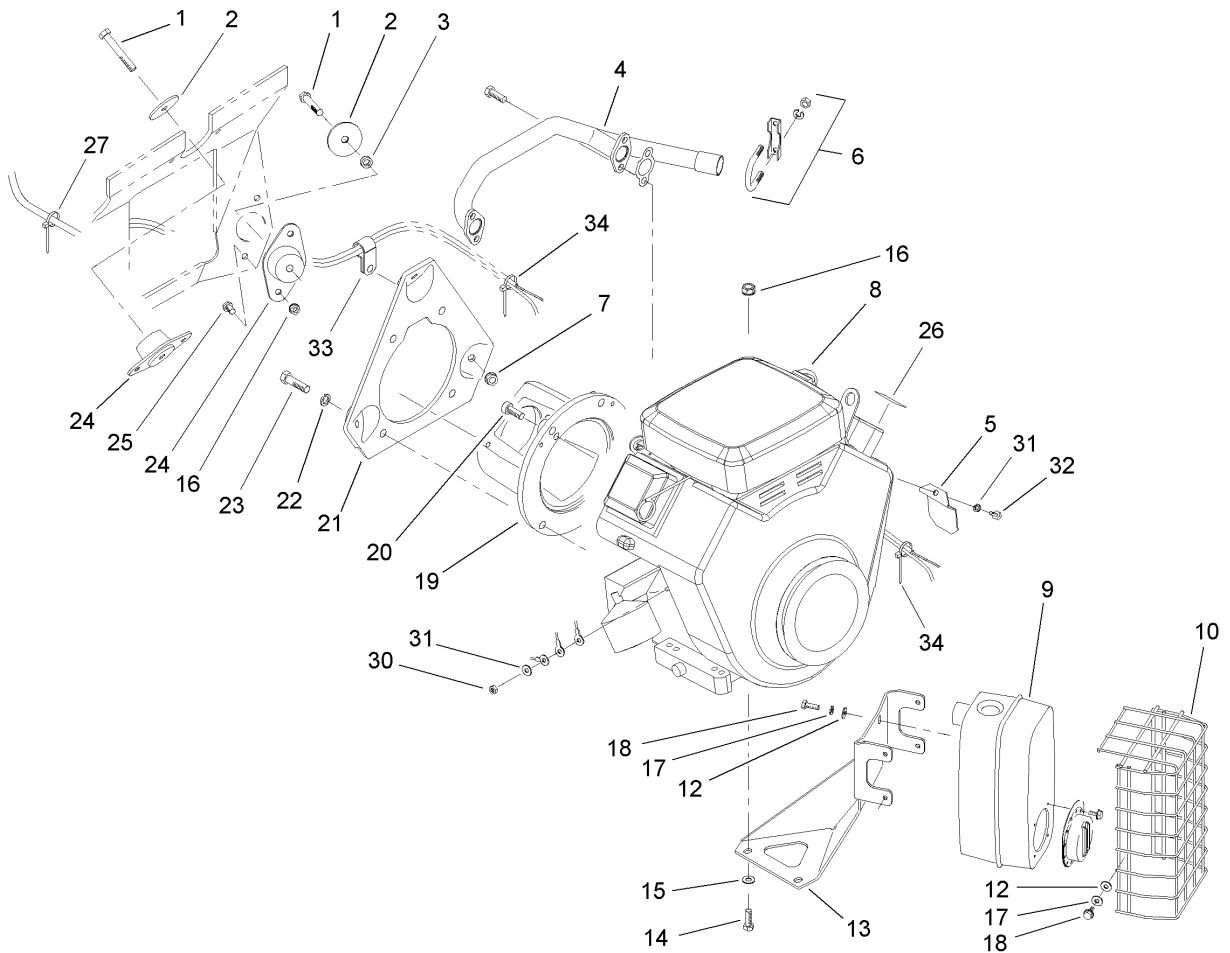


Section 5 Assembly No. 93-1386

Ref	Part No.	Qty.	Description
1	94-5434	1	Spool
2	353-481	2	Lift Check ASM
2:1	237-54	1	O-Ring
2:2	353-306	1	Washer-Backup
2:3	353-305	1	O-Ring
2:4	353-303	2	Washer-Backup
2:5	353-302	1	O-Ring
3	92-2548	2	Spool Set Kit
3:1	353-957	1	Cup-Seal
3:2	92-2546	1	Wiper-Seal
3:3	92-2547	1	Seal-Retainer
4	353-833	1	Positioner ASM
4:1	353-733	2	Spacer-Bonnet
4:2	353-417	1	Collar-Stop
4:3	353-831	1	Spring
4:4	353-529	1	Plate-Retainer, Seal
4:5	92-3148	1	Spring-Traction
4:6	353-808	1	Collar-Spring
4:7	353-830	1	O-Ring
4:8	94-4248	1	Collar-Spool
4:9	99-6895	1	Bonnet
4:10	354-28	2	Screw-HS
4:11	3253-4	2	Washer-Lock
5	93-3652	1	Boot-Dust

Ref	Part No.	Qty.	Description
5:1	3274-52	2	Screw-HSH
5:2	353-575	1	Boot
5:3	93-3651	1	Retainer-Boot
6		1	Housing-V20p
36		1	O-Ring
37		3	O-Ring

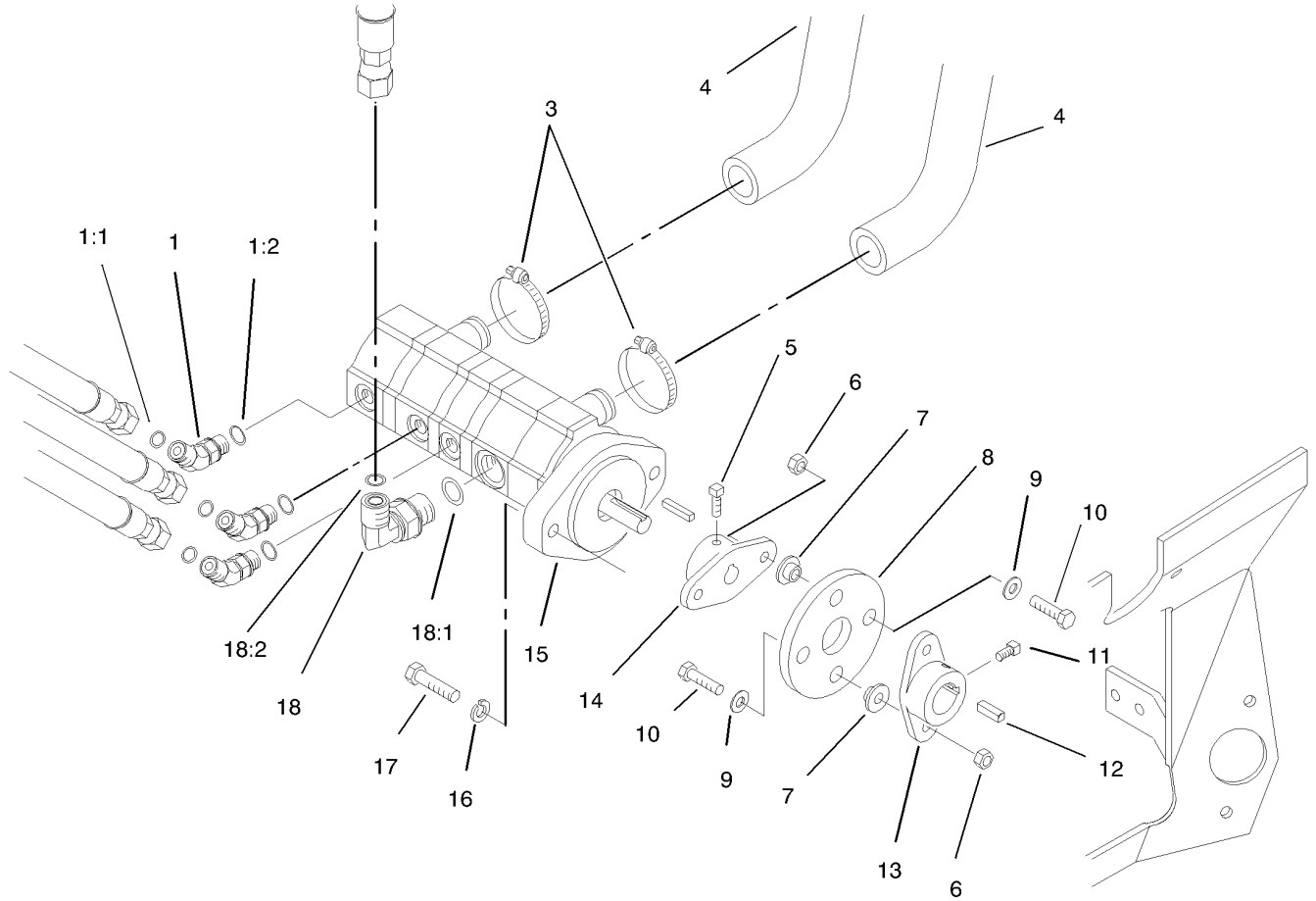
PROTOTYPE



Engine Installation Assembly

Ref	Part No.	Qty.	Description
1	323-12	3	Screw-HH
2	83-1040	3	Washer-Flat
3	83-1050	2	Spacer
4	83-1080	1	Exhaust Manifold ASM
5	83-2310	1	Shield-Regulator
6	2112-11	1	Clamp-Muffler
7	3290-357	3	Nut-HHF
8	106-4618	1	Engine-18hp, Vanguard
9	98-0616	1	Muffler ASM
10	83-1400-03	1	Shield-Muffler
12	3256-1	8	Washer-Flat
13	83-1630-03	1	Bracket-Support, Muffler
14	322-8	2	Screw-HH
15	3256-23	2	Washer-Flat
16	32128-20	8	Nut-HF
17	3253-3	8	Washer-Lock
18	49-2040	8	Screw-Tapping
19	83-1060-03	1	Adapter-Pump
20	3274-7	2	Screw-HSH
21	85-8120-03	1	Plate-Mount, Engine
22	3253-6	4	Washer-Lock
23	324-7	4	Screw-HH
24	83-1030	3	Mount-Engine
25	322-3	6	Screw-HH

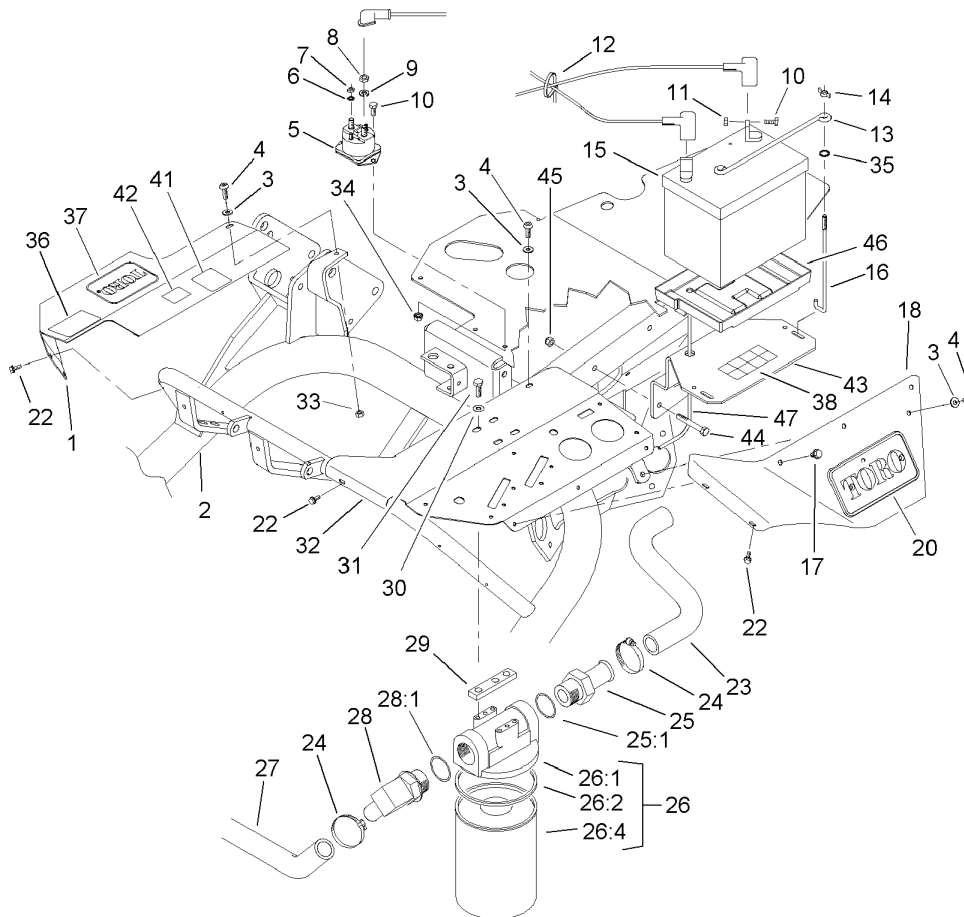
Ref	Part No.	Qty.	Description
26	93-8069	1	Decal-Surface, Hot
27	3290-379	1	Tie-Cable
30	43-2830	1	Nut-Hex
31	43-5930	2	Washer-Spring
32	33113-016	1	Screw-HH
33	2412-81	1	Clamp-R
34	3290-378	2	Tie-Cable



Hydraulic Pump Installation Assembly

Ref	Part No.	Qty.	Description
1	340-87	3	Fitting-Hyd, 45 DEG
1:1	237-22	1	O-Ring
1:2	237-42	1	O-Ring
3	2412-34	2	Clamp-Hose
4	95-5966	2	Hose-Pump Inlet
5	3241-6	2	Screw-SQH
6	3296-29	4	Nut-Lock, NI
7	27-6600	4	Spacer-Coupling
8	44-2230	1	Coupling-Rubber
9	3256-3	4	Washer-Flat
10	322-6	4	Screw-HH
11	3241-2	2	Screw-SQH
12	10-7070	1	Key-Square
13	27-1960	1	Hub-Engine
14	27-1970	1	Hub-Pump
15	107-2565	1	4 Section Gear Pump ASM
●15:1	107-2566	1	Seal Kit-4 Section
16	3253-21	2	Washer-Lock
17	323-7	2	Screw-HH
18	340-105	1	Fitting-Hyd, 90 DEG
18:1	237-80	1	O-Ring
18:2	237-30	1	O-Ring

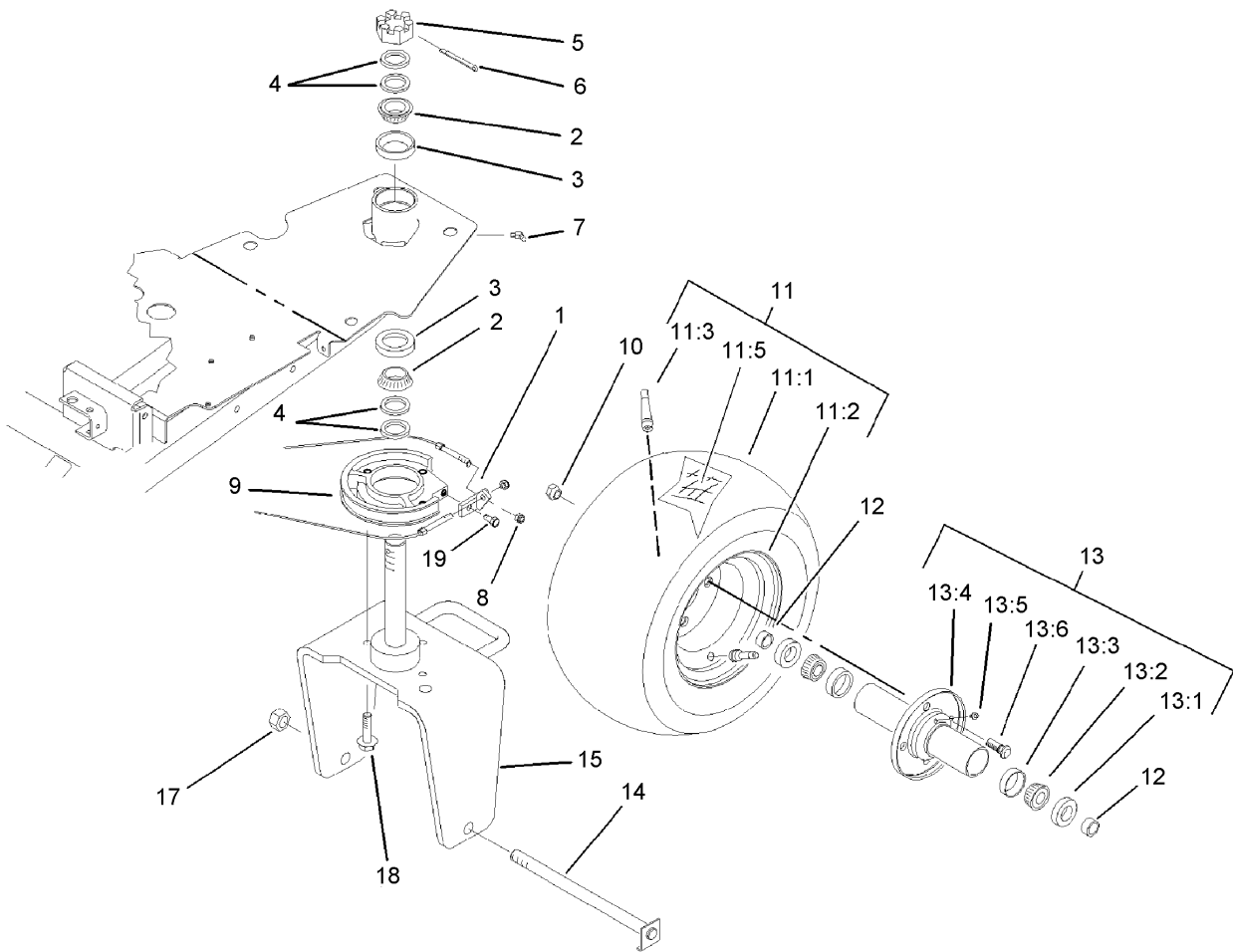
--	--	--	--



Frame Assembly

Ref	Part No.	Qty.	Description
1	94-2694-01	1	Cover-RH
2	95-5981-01	1	Frame ASM
3	3256-22	3	Washer-Flat
4	3274-69	3	Screw-HSBH
5	28-4210	1	Solenoid
6	3254-1	2	Washer-Lock, Int
7	3219-14	2	Nut-Hex
8	3218-13	2	Nut-Jam
9	3253-4	2	Washer-Lock
10	321-3	4	Screw-HH
11	3217-5	2	Nut-Hex
12	3290-378	1	Tie-Cable
13	100-6434	1	Rod-Battery, Hold Down
14	32103-22	2	Nut-Wing
15	104-8162	1	Battery (Dry)
16	100-6435	2	Post-Battery
17	46-8560	3	Screw-HHF
18	83-0840-01	1	Shield-Cover, Valve
20	105-9751	1	Decal
22	32104-116	5	Screw
23	95-7119	1	Hose-Line, Return
24	2412-34	3	Clamp-Hose
25	353-563	1	Fitting-Hyd, Straight
25:1	237-101	1	O-Ring

Ref	Part No.	Qty.	Description
26		1	Filter And Head ASM
26:1	44-5560	1	Head-Filter, Oil
26:2	72-3850	1	Seal-Filter, Oil
26:4	74-3570	1	Filter
27	68-5880	1	Hose-HYD
28	353-564	1	Fitting-90 DEG
28:1	237-101	1	O-Ring
29	27-2380	2	Spacer
30	3256-23	4	Washer-Flat
31	322-4	4	Screw-HH
32	83-0830-01	1	Panel-Control, Upper
33	3296-16	1	Nut-Lock, NI
34	32149-2	2	Nut
35	237-143	2	O-Ring
36	93-8065	1	Decal-Traction
37	67-1300	1	Decal
38	93-7276	1	Decal-Danger
41	105-4674	1	Decal-Noise, Ce
42	93-7252	1	Decal
43	104-2064-03	1	Battery Base ASM
44	322-11	2	Screw-HH
45	3296-29	2	Nut-Lock, NI
46	106948	1	Tray-Battery
47	98-0601	1	Tube-Drain, Battery

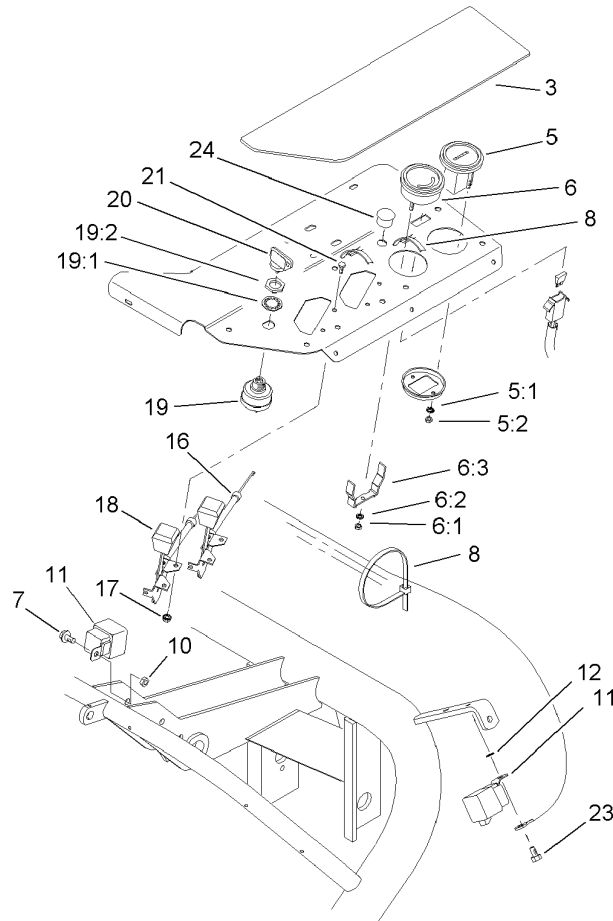


Rear Wheel Assembly

Ref	Part No.	Qty.	Description
1	95-5956	1	Cable Anchor ASM
2	254-70	2	Bearing-Cone
3	254-61	2	Bearing-Cup
4	18-6320	4	Washer-Steering
5	32136-9	1	Nut-SHH
6	3272-37	1	Pin-Cotter
7	302-11	1	Fitting-Lube, 45 DEG
8	3296-4	2	Nut-Lock, NI
9	95-5955-01	1	Drum-Steering
10	242-50	4	Nut-Lug
11		1	Wheel And Tire-ASM
11:1	28-3680	1	Tire
11:2	217-60	1	Rim
11:3	232-27	1	Stem-Valve
11:5	232-37	1	Tube
12	74-3730	2	Spacer-Spindle, Rear
13	72-9710	1	Hub-Tire, Sulky
13:1	253-111	2	Seal-Oil
13:2	254-78	2	Bearing-Cone
13:3	254-79	2	Bearing-Roller, Cup
13:4	75-9440	1	Hub ASM
13:5	302-11	1	Fitting-Lube, 45 DEG
13:6	10-6830	4	Stud-Type, Drive
14	5-3934	1	Bolt-Caster

Ref	Part No.	Qty.	Description
15	95-5952-01	1	Fork-Caster
17	3296-67	1	Nut-Lock NI
18	3234-24	3	Screw-HHF
19	322-3	1	Screw-HH

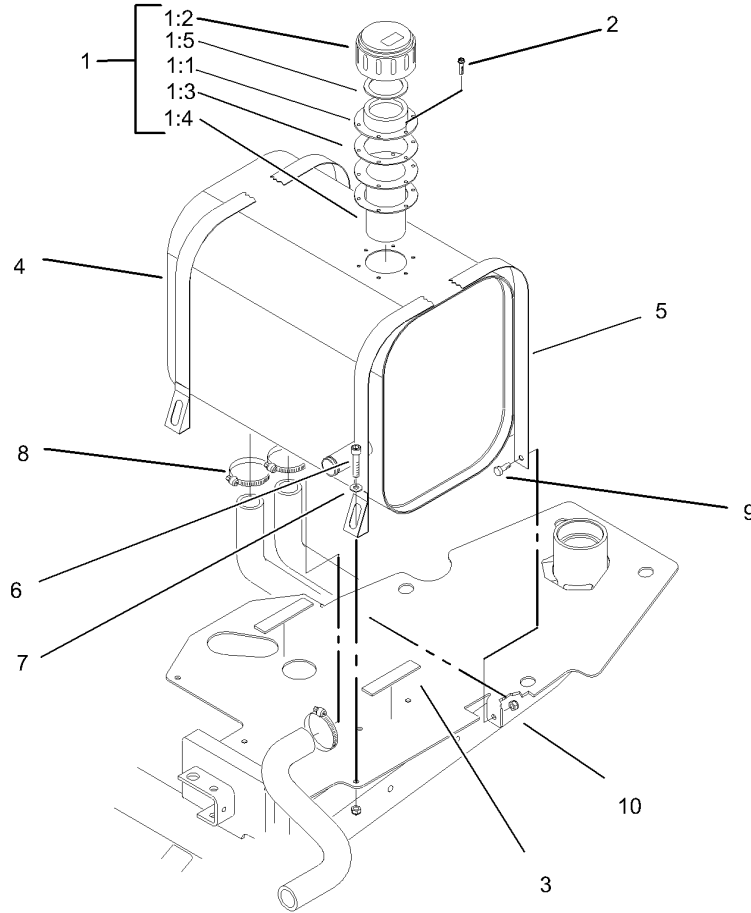
PROTOTYPE



Control Panel Assembly

Ref	Part No.	Qty.	Description
3	107-2554	1	Decal-Panel, Control
5	66-2950	1	Gauge-Hourmeter
5:1	3255-20	2	Washer-Lock
5:2	3217-25	2	Nut-Hex
6	98-2160	1	Voltmeter
6:1	3217-27	1	Nut-Hex
6:2	3255-25	1	Washer-Lock
6:3	78-0080	1	Clamp-Mounting
7	321-4	1	Screw-HH
8	3290-378	3	Tie-Cable
10	3296-16	1	Nut-Lock, NI
11	70-1480	2	Relay
12	3255-7	1	Washer-Lock/ext
16	83-0040	1	Control-Choke
17	3296-12	4	Nut-Lock
18	83-0030	1	Control-Throttle
19	88-9830	1	Key Switch ASM
19:1	3254-5	1	Washer-Tooth
19:2	218-461	1	Nut-HH
20	63-8360	2	Key-Ignition
21	3290-134	4	Screw
23	32104-95	1	Screw-HWH
24	2410-64	1	Plug-Button

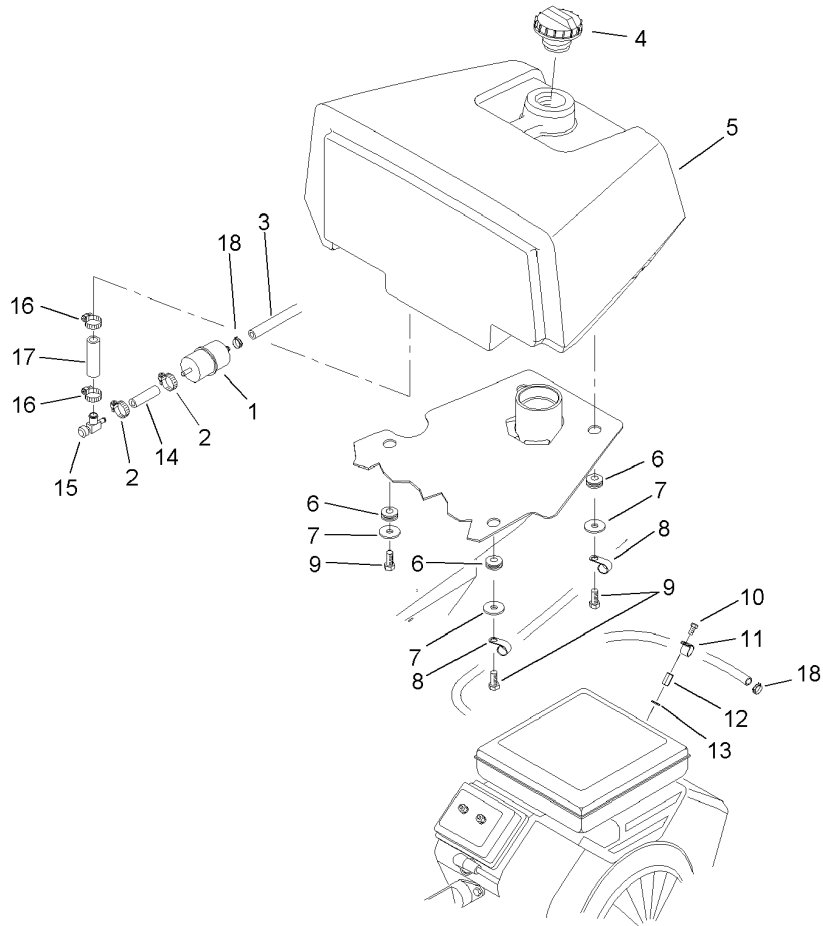
<p style="font-size: 48px; opacity: 0.5;">PROTOTYPE</p>			
---	--	--	--



Hydraulic Reservoir Assembly

Ref	Part No.	Qty.	Description
1	62-2570	1	Filler Cap ASM
1:1	353-962	1	Cap ASM
1:2	353-961	1	Flange
1:3	353-963	2	Gasket
1:4	62-2610	1	Strainer-Cap, Filler
1:5	76-1720	1	Gasket-Cap, Filler
2	32144-34	6	Screw-Forming, Thread
3	95-5951	2	Strip-Seal
4	95-7118	1	Tank-Hydraulic
5	27-2400	2	Reservoir Strap ASM
6	3274-19	2	Screw-HSH
7	3256-22	2	Washer-Flat
8	2412-34	3	Clamp-Hose
9	321-3	2	Screw-HH
10	3296-16	4	Nut-Lock, NI

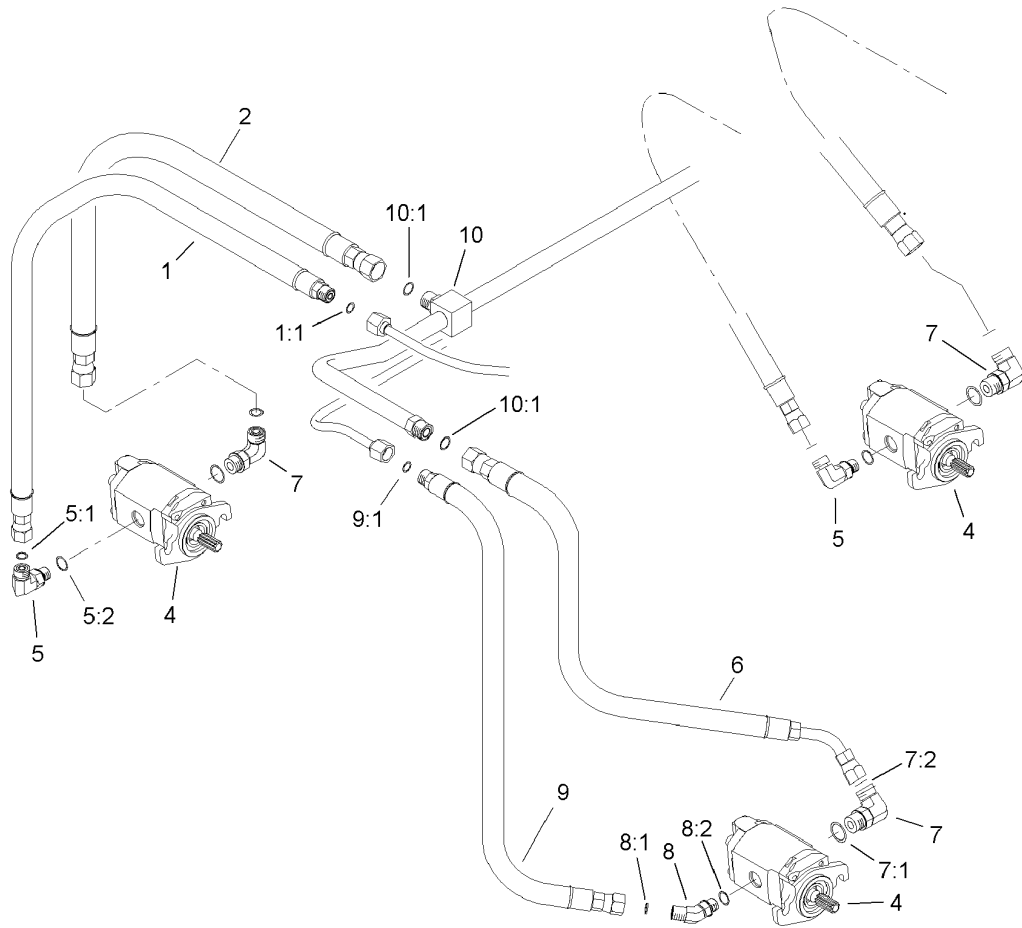
PROTOTYPE



Fuel Tank Assembly

Ref	Part No.	Qty.	Description
1	94-2690	1	Filter-Fuel
2	2412-108	2	Clamp-Worm
3	83-2041	1	Hose-Fuel
4	93-7170	1	Cap-Fuel
5	105-8266	1	Tank-Fuel
6	240-11	4	Bushing-Flange
7	63-8410	4	Washer
8	2412-41	3	Clamp
9	323-6	4	Screw-HH
10	33113-012	1	Screw-HH
11	2412-94	1	Clamp
12	83-2200	1	Nut
13	3256-63	1	Washer-Flat
14	83-2040	1	Hose-Fuel
15	83-1390	1	Valve-Shut-Off, Fuel
16	2412-36	2	Clamp-Hose
17	56-2230	1	Hose-Fuel
18	2412-98	2	Clamp

PROTOTYPE

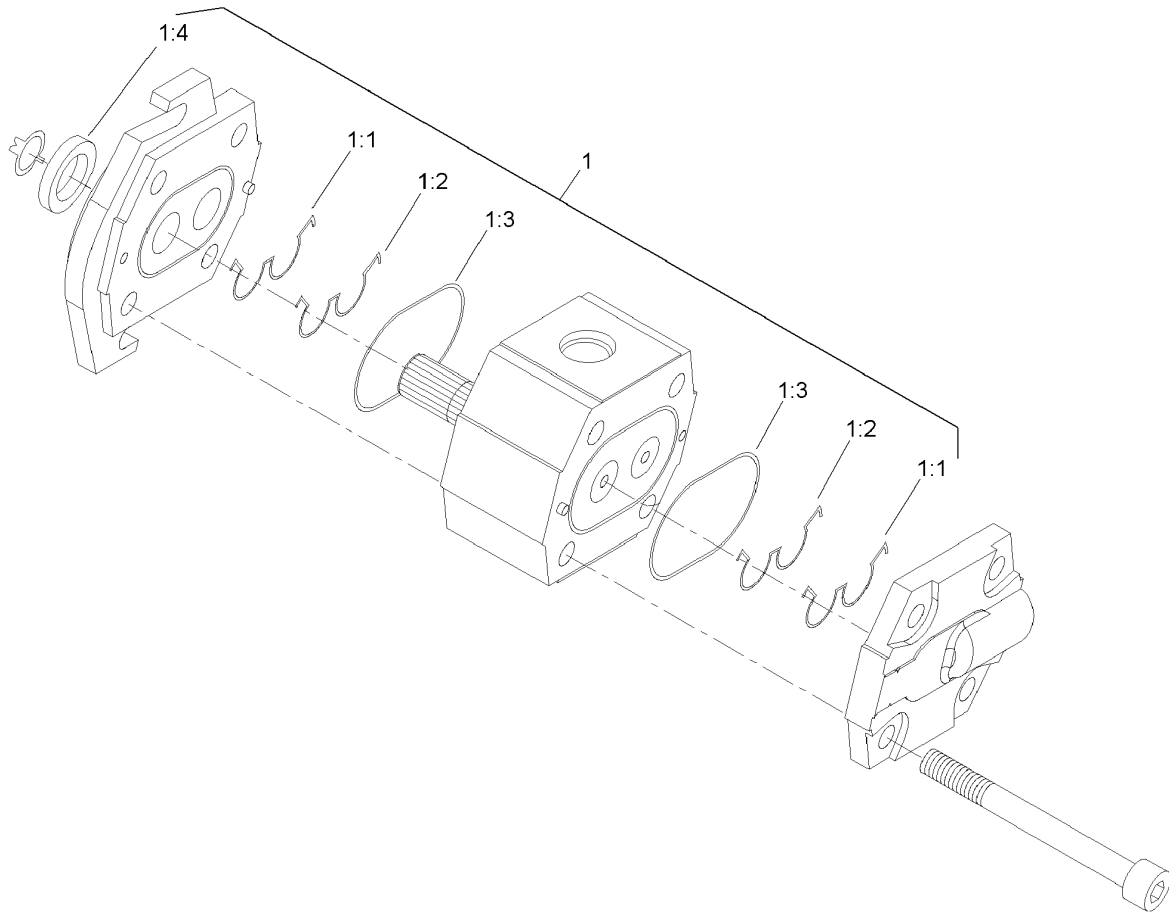


Reel Motor Installation Assembly

Ref	Part No.	Qty.	Description
1	95-5984	1	Hose-HYD
1:1	237-22	1	O-Ring
2	95-5985	1	Hose-HYD
4	105-9770	3	Motor-HYD
5	340-77	2	Fitting-Hyd, 90 DEG
5:1	237-22	1	O-Ring
5:2	237-42	1	O-Ring
6	95-5989	1	Hose-HYD
7	340-98	3	Fitting-Hyd, 90 DEG
7:1	237-79	1	O-Ring
7:2	237-30	1	O-Ring
8	340-87	1	Fitting-Hyd, 45 DEG
8:1	237-22	1	O-Ring
8:2	237-42	1	O-Ring
9	95-5988	1	Hose-HYD
9:1	237-22	1	O-Ring
10	100-6431	1	Tube-Return
10:1	237-30	2	O-Ring

--	--	--	--

PROTOTYPE

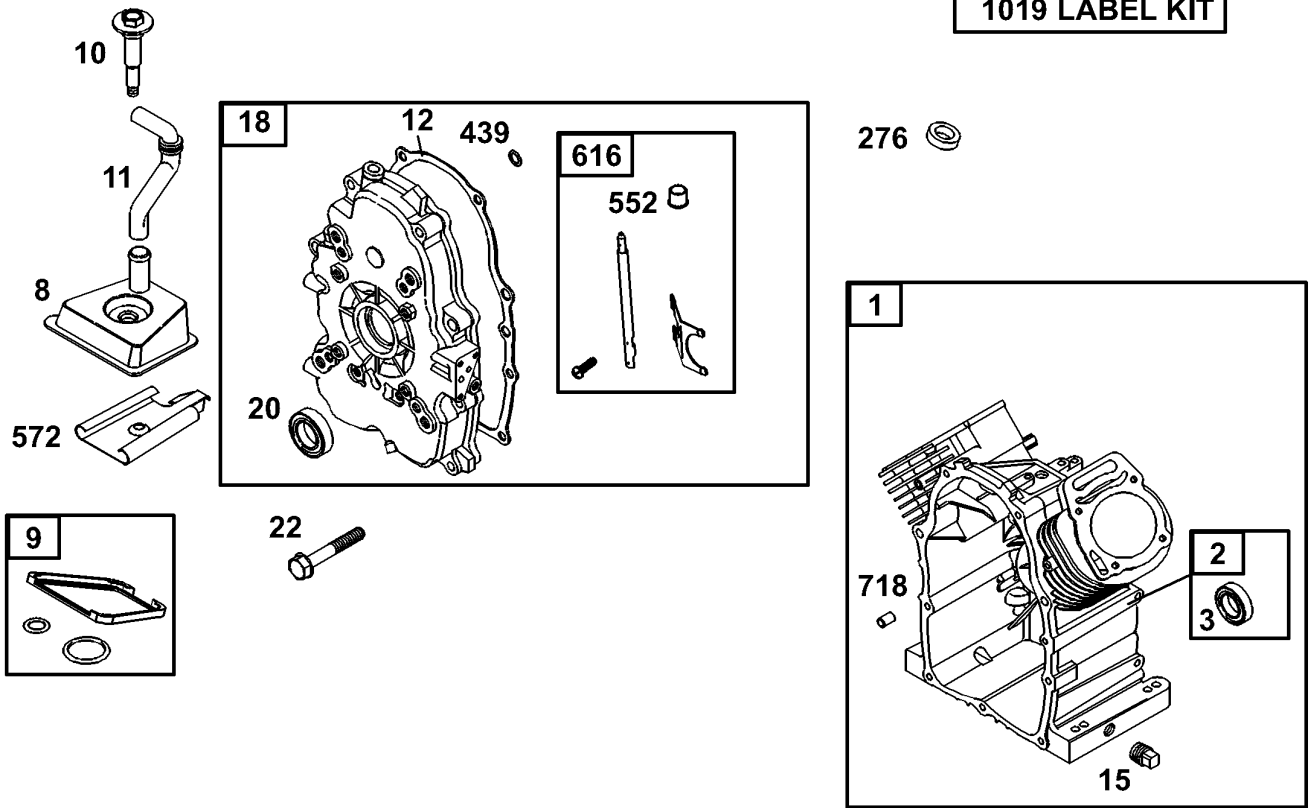


Reel Motor Assembly No. 105-9770

Ref	Part No.	Qty.	Description
1	106-6362	1	Kit-Seal
② 1:1		2	Seal-Extrusion, Anti
② 1:2		2	Seal-Pressure Loading
② 1:3		2	O-Ring
② 1:4		1	Seal-Shaft

PROTOTYPE

1019 LABEL KIT

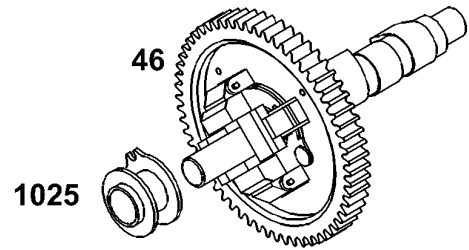
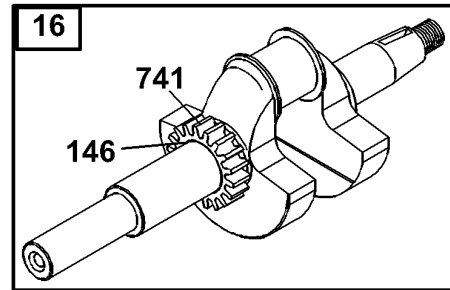
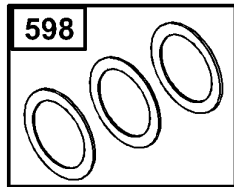
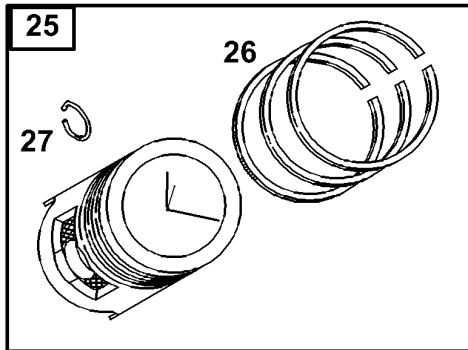
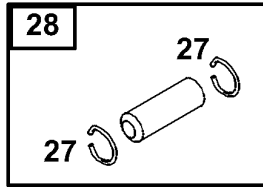
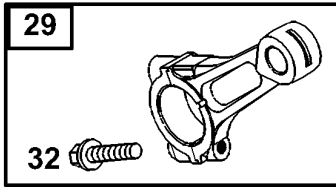


Assemblies include all parts shown in frames.

Cylinder Assembly
Briggs and Stratton Model 350447-1331-E1

Ref	Part No.	Qty.	Description
1	692544	1	Cylinder Assembly
2	808534	1	Bushing
3	805101	1	Seal-Oil
8	808984	1	Assembly-Breather
9	809094	1	Valve Cover Gasket
10	690751	1	Screw (Breather Assembly)
11	806083	1	Breather Tube
12	691684	1	Crankcase Gasket
15	690946	1	Plug-Oil Drain
18	808847	1	Cover-Crankcase
20	805049	1	Seal-Oil
22	692540	1	Screw
276	690704	1	Washer-Sealing
439	692154	1	O-Ring (Crankcase Cover)
552	806686	1	Bushing-Governor Crank
572	690686	1	Baffle-Breather
616	806685	1	Fork-Governor
718	806469	1	Locating Pin
1019	808036	1	Kit-Label

<p style="font-size: 48px; opacity: 0.5;">PROTOTYPE</p>			
---	--	--	--

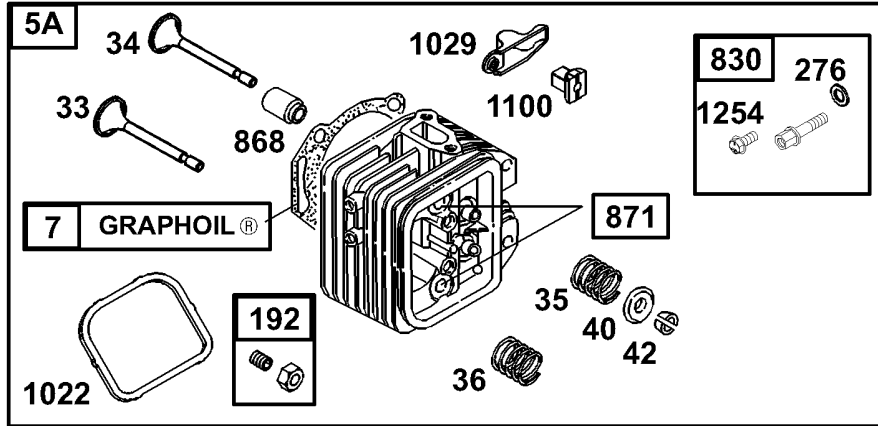
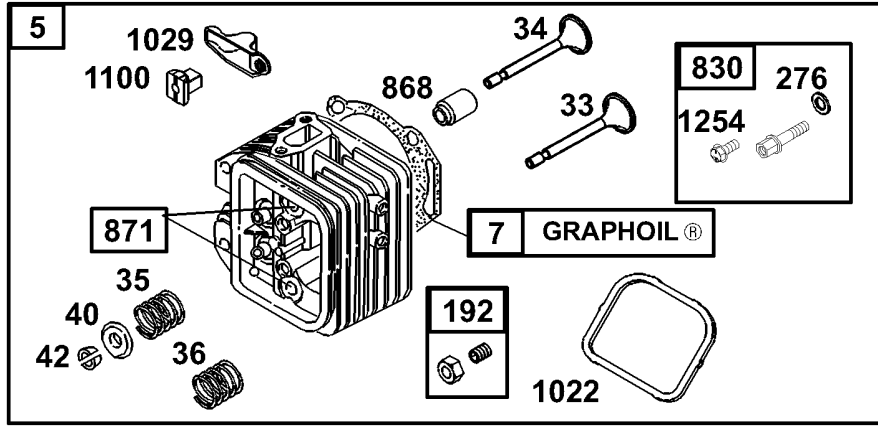


Assemblies include all parts shown in frames.

Crankshaft Assembly Briggs and Stratton Model 350447-1331-E1

Ref	Part No.	Qty.	Description
16	692171	1	Crankshaft
17	690752	1	Bearing-Ball
25	808326	1	Piston Assembly (Standard)
	808336	1	Piston Assembly (.010 O.s.)
	808337	1	Piston Assembly (.020 O.s.)
	808338	1	Piston Assembly (.030 O.s.)
26	807889	1	Ring Set (Standard)
	807994	1	Ring Set (.010 O.s.)
	807995	1	Ring Set (.020 O.s.)
	807996	1	Ring Set (.030 O.s.)
27	690683	1	Lock-Piston Pin
28	807886	1	Pin-Piston
29	807900	1	Rod-Connecting
	807803	1	Pin-Piston (.020" U.s.)
32	690698	1	Screw
46	691557	1	Camshaft
146	691639	1	Key-Timing
377	808095	1	Key-Timing
598	807625	1	Washer Set
741	691530	1	Gear-Timing
1025	690689	1	Spool-Governor

--	--	--	--

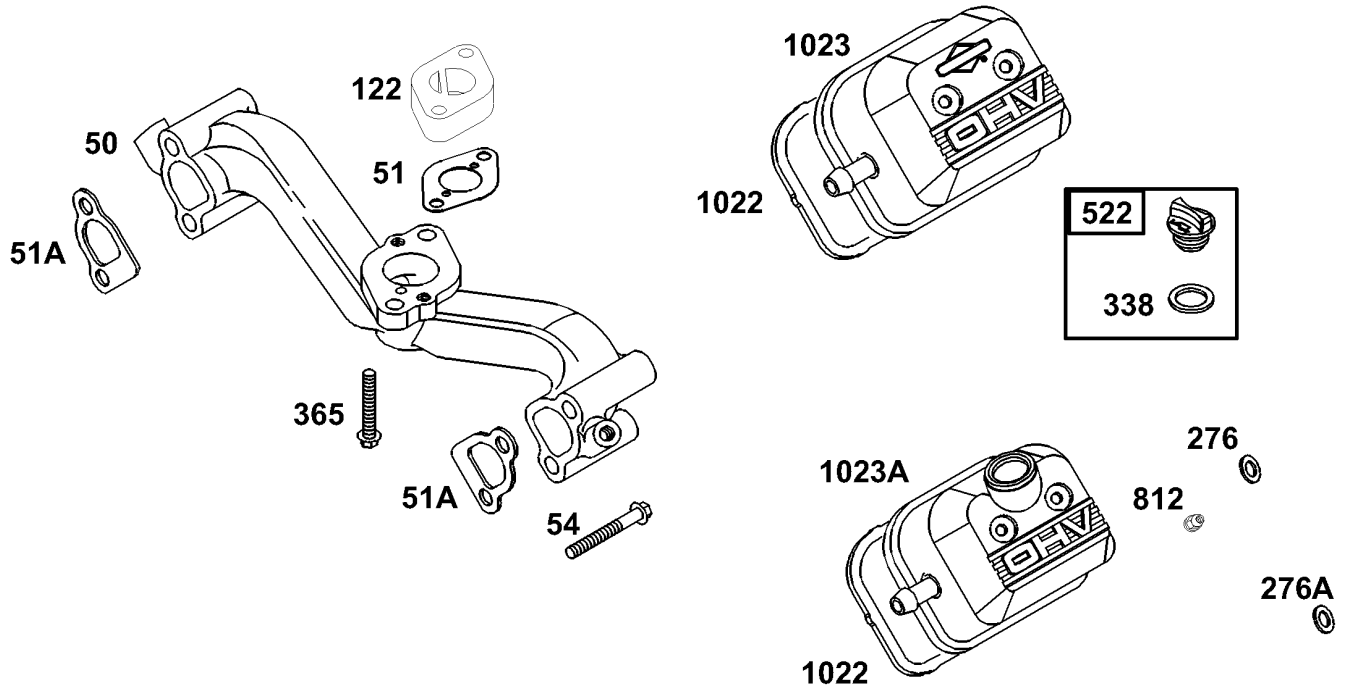


Assemblies include all parts shown in frames.

Cylinder Head Assembly No. 1 Briggs and Stratton Model 350447-1331-E1

Ref	Part No.	Qty.	Description
75	809185	1	Cylinder Head (No. 1)(Used After Date Code 01120200)
75A	809186	1	Cylinder Head (No. 2)(Used After Date Code 01120200)
67	690888	1	Cylinder Head Gasket
713	692059	1	Cylinder Head Screw
733	807681	1	Valve-Exhaust
734	807680	1	Valve-Intake
735	692084	1	Spring-valve(Intake)
736	692084	1	Spring-valve(Intake)
740	692058	1	Retainer-Valve
742	807683	1	Keeper-Valve
745	690977	1	Tappet-Valve
7192	807623	1	Screw
7276A	807085	1	New Tractor Loose Parts Package 211-5 Only
7337	496018	1	Sparkplug
7383	19374	1	Wrench-Sparkplug
7613	691902	1	Screw (Exhaust Muffler)
7635	692076	1	Boot-Sparkplug
7830	809157	1	Stud (Rocker Arm)
7868	691963	1	Seal-Valve
7871	692057	1	Valve Guide
7883	691613	1	Exhaust Gasket

Ref	Part No.	Qty.	Description
61022	806039	1	Gasket-Valve Cover
71026	691836	1	Rod-push(Intake Valve)
71026	691758	1	Rod-push(Exhaust Valve)
71029	691543	1	Arm-Rocker
71100	690973	1	Pivot-Rocker Arm
71254	807084	1	New Tractor Loose Parts Package 211-3 Only

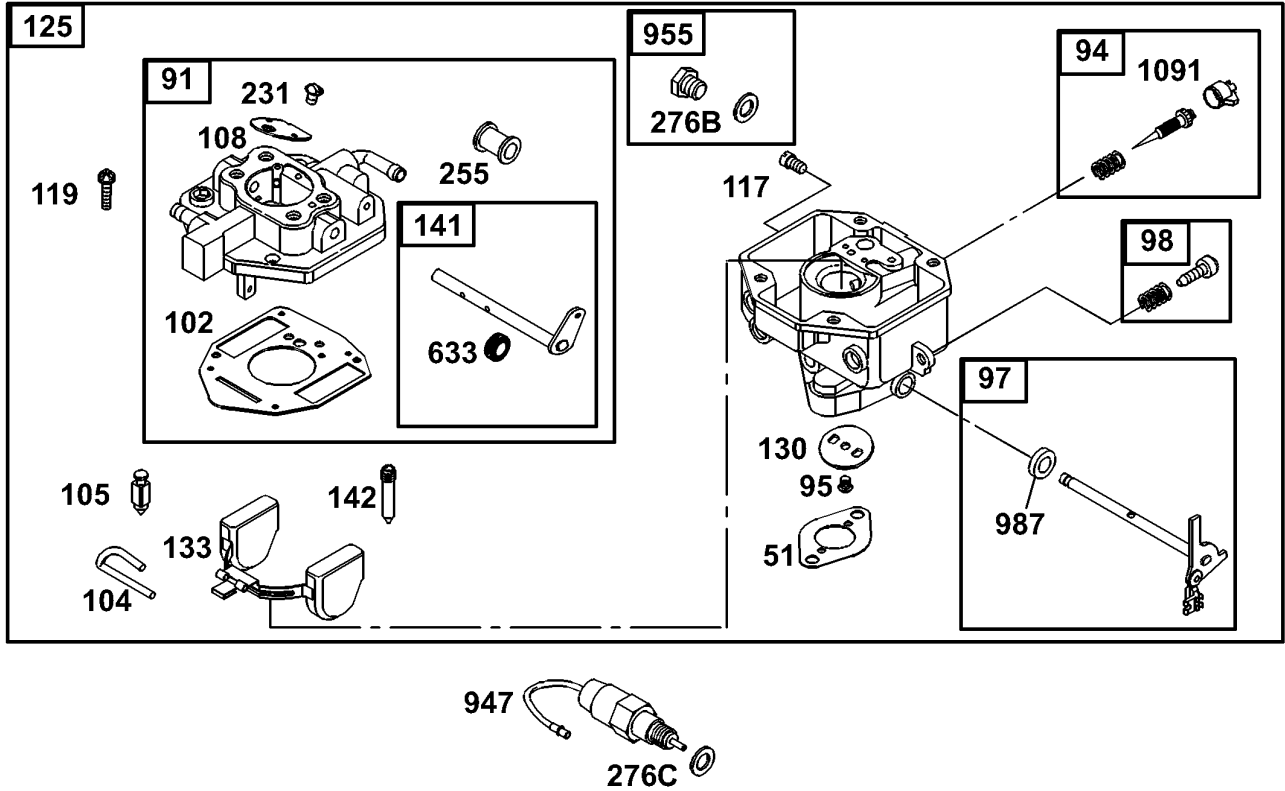


Assemblies include all parts shown in frames.

Intake Manifold and Rocker Cover Assembly Briggs and Stratton Model 350447-1331-E1

Ref	Part No.	Qty.	Description
750	690754	1	Manifold-Intake
3751	691694	1	Gasket-Intake
3651A	692035	1	Gasket-Intake
754	690676	1	Screw
7122	690691	1	Spacer-Carburetor
7276	807085	1	New Tractor Loose Parts Package 211-5 Only
7276A	691766	1	Sealing Washer
7338	691312	1	Gasket-Dipstick
7365	690711	1	Screw
7522	491832	1	Plug-Oil Filler
7812	692055	1	Nut (Air Cleaner)
361022	806039	1	Gasket-Valve Cover
71023	691494	1	Cover-Valve
71023A	690910	1	Cover-Valve

PROTOTYPE



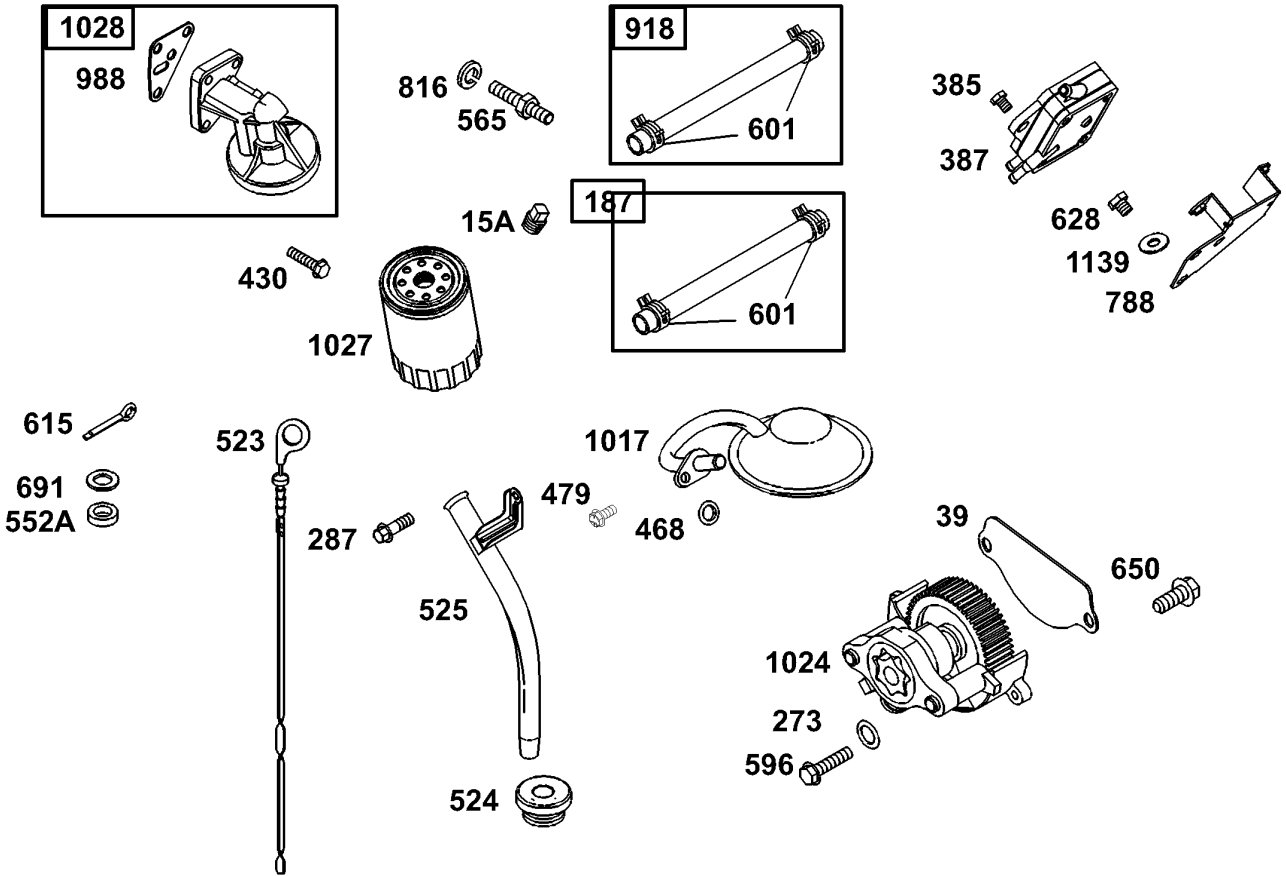
Assemblies include all parts shown in frames.

Carburetor Assembly Briggs and Stratton Model 350447-1331-E1

Ref	Part No.	Qty.	Description
5751	691694	1	Gasket-Intake
791	809208	1	Upper Carburetor Body
5794	808257	1	Idle Mixture Kit
5795	690718	1	Screw (Throttle Valve)
797	808973	1	Throttle Shaft Kit
798	808981	1	Idle Speed Kit
57102	692077	1	Gasket-Carburetorbody
57104	690723	1	Pin-Float Hinge
57105	692078	1	Float Needle Valve
7108	690719	1	Valve-Choke
7109	809096	1	Choke Shaft
57117	808406	1	Main Jet (Standard)
7119	690720	1	Screw
7125	809209	1	Carburetor
7130	690726	1	Valve-Throttle
7133	806961	1	Float-Carburetor
57142	690725	1	Nozzle-Carburetor
57231	690718	1	Screw (Throttle Valve)
57255	690721	1	Bushing-Choke Shaft
57276B	690724	1	Sealing Washer
7276C	806137	1	Washer
57633	690722	1	Seal-Choke Shaft
7947	692094	1	Fuel Solenoid
7955	807723	1	Carburetor Plug

Ref	Part No.	Qty.	Description
57987	806131	1	Seal-Shaft
571091	691516	1	Cap-Limiter

PROTOTYPE



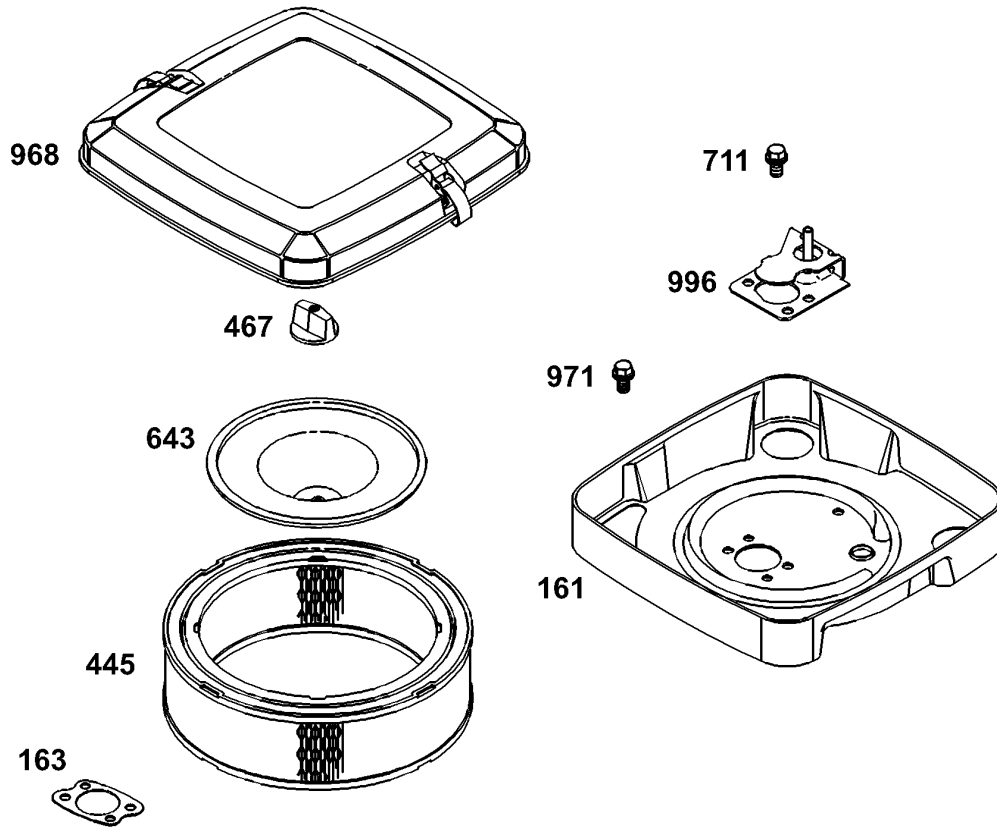
Assemblies include all parts shown in frames.

Fuel Pump, Oil Pump and Dipstick Assembly Briggs and Stratton Model 350447-1331-E1

Ref	Part No.	Qty.	Description
⑦15A	690283	1	Plug-Oil
⑦39	690745	1	Deflector-Oil
⑦187	691050	1	Line-Fuel (Cut To Required Length)
③⑦273	690681	1	Seal-O Ring (Oil Pump)
⑦287	692062	1	Screw (Drive Cap)
⑦385	693169	1	Screw (Fuel Pump)
⑦387	808969	1	Fuel Pump
⑦430	690679	1	Bolt (Oil Pump)
③⑦468	690690	1	Screw
⑦479	807084	1	New Tractor Loose Parts Package 211-3 Only
⑦523	693175	1	Dipstick
⑦524	693172	1	Seal-Fill Tube
⑦525	693174	1	Dipstick Tube
⑦552A	690701	1	Bushing-Governor Crank
⑦565	690682	1	Stud (Oil Filter)
⑦596	691492	1	Screw
⑦601	691038	1	Clamp-Hose
⑦615	691550	1	Pin-Cotter
⑦628	692062	1	Screw (Drive Cap)
⑦650	692539	1	Screw
⑦691	690680	1	Seal-Governor Shaft
⑦788	691559	1	Bracket-Pump

Ref	Part No.	Qty.	Description
⑦816	690706	1	Washer
⑦918	393815	1	Hose-Fuel
③⑦988	692063	1	Oil Adapter Gasket
⑦1017	690900	1	Screen-Oil Pump
⑦1024	693185	1	Pump-Oil
⑦1027	492932	1	Filter-Oil
⑦1028	808235	1	Adapter-Oil Filter
⑦1139	806497	1	Washer(Fuel Pump Bracket)

PROTOTYPE

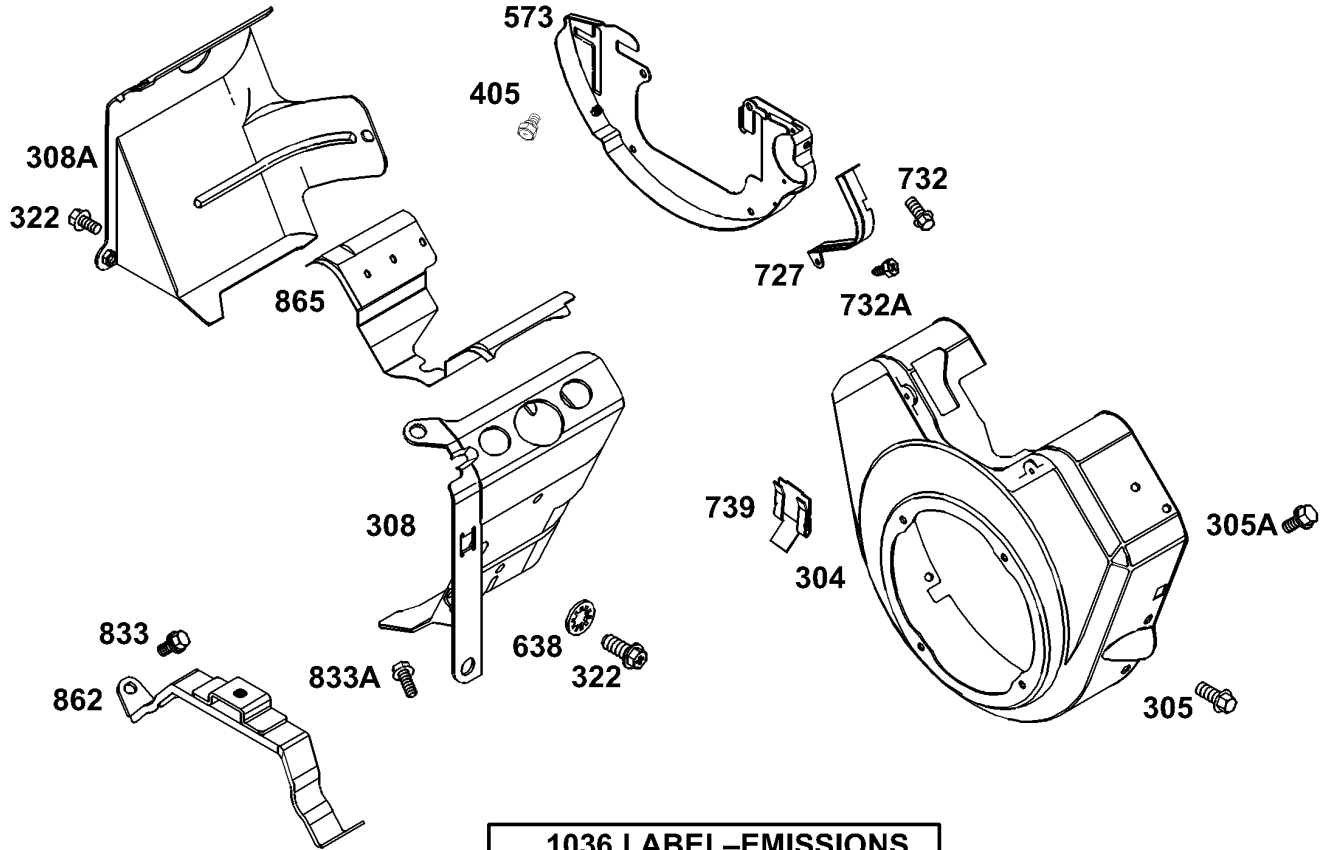


Assemblies include all parts shown in frames.

Air Cleaner Assembly Briggs and Stratton Model 350447-1331-E1

Ref	Part No.	Qty.	Description
● 161	691561	1	Base-Air Cleaner
● 163	692081	1	Air Cleaner Gasket
● 445	394018	1	Filter-Air
● 467	691985	1	Air Cleaner Knob
● 643	692079	1	Air Filter Retainer
● 711	692539	1	Screw
● 968	692097	1	Air Cleaner Cover
● 971	692537	1	Screw
● 996	691577	1	Shield-Carburetor

PROTOTYPE



1036 LABEL-EMISSIONS

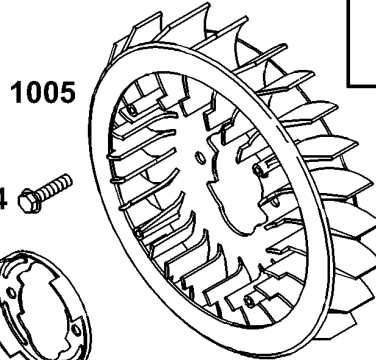
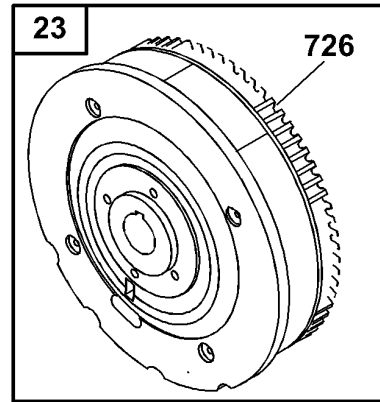
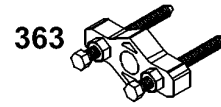
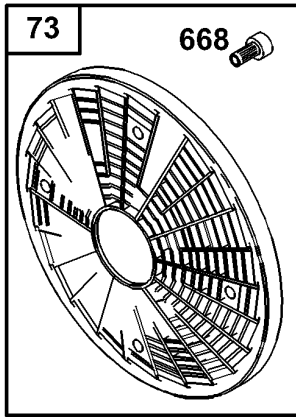
Assemblies include all parts shown in frames.

**Blower Housing Assembly
Briggs and Stratton Model 350447-1331-E1**

Ref	Part No.	Qty.	Description
⑦304	690929	1	Blower Housing
⑦305	692539	1	Screw
⑦305A	692056	1	Screw (Blower Housing)
⑦308	806547	1	Cylinder Head Cover (Cyl. #1)
⑦308A	806546	1	Cylinder Head Cover (Cyl. #2)
⑦322	692539	1	Screw
⑦405	807163	1	Discontinued
⑦573	690902	1	Back Plate
⑦638	691551	1	Washer-Lock
⑦727	690714	1	Shield-Starter
⑦732	692539	1	Screw
⑦732A	690688	1	Screw (Flywheel Guard)
⑦739	690451	1	Debris Clip
⑦833	692539	1	Screw
⑦833A	690872	1	Screw
⑦862	692153	1	Mount-Cleaner
⑦865	690750	1	Cover-Air Guide
⑦1036	806885	1	Emissions Label

--	--	--	--

PROTOTYPE

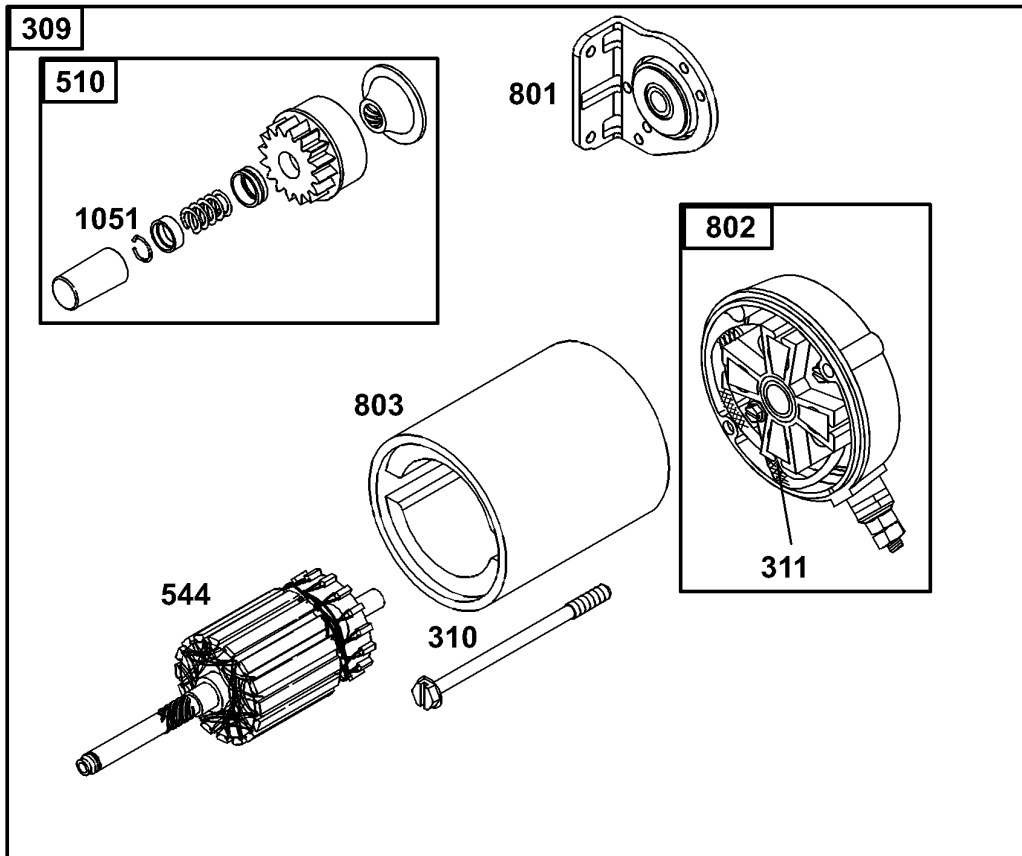


Assemblies include all parts shown in frames.

Flywheel Assembly Briggs and Stratton Model 350447-1331-E1

Ref	Part No.	Qty.	Description
723	808768	1	Flywheel
773	494439	1	Screen-Rotating
774	691647	1	Screw (Rotating Screen)
7332	690887	1	Nut
7363	19203	1	Puller-Flywheel
7668	691500	1	Spacer
7726		1	Ring Gear (Sold In Flywheel Kit Only, See Ref. 23)
7934	691058	1	Screw (Fan Retainer)
71005	690911	1	Flywheel Fan
71006	690452	1	Retainer-Fan

PROTOTYPE

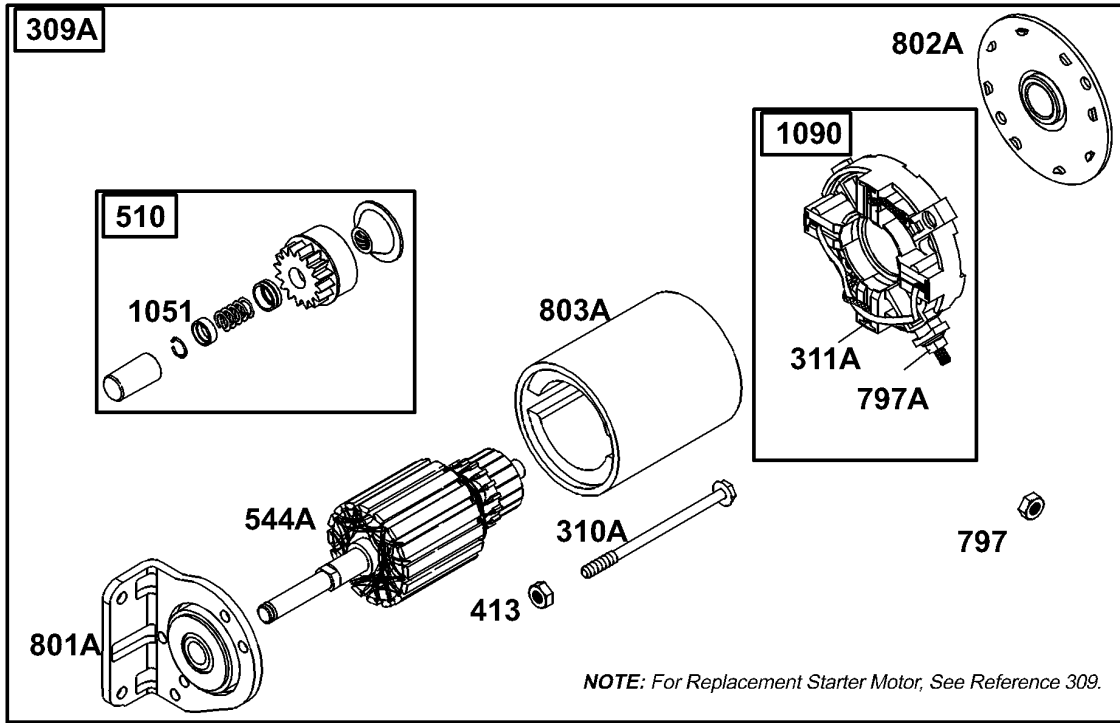


Assemblies include all parts shown in frames.

Starter Assembly Briggs and Stratton Model 350447-1331-E1

Ref	Part No.	Qty.	Description
309	691564	0	Motor-Starter
310	496880	1	Bolt-Thru
311	496887	1	Brush Set
510	496881	1	Drive-Starter
544	690855	1	Armature-Starter
697	692062	1	Screw (Drive Cap)
801	808778	1	Cap-Drive
802	496813	1	Bolt
803	690854	1	Housing-Starter
1051	691124	1	Lock Ring

PROTOTYPE

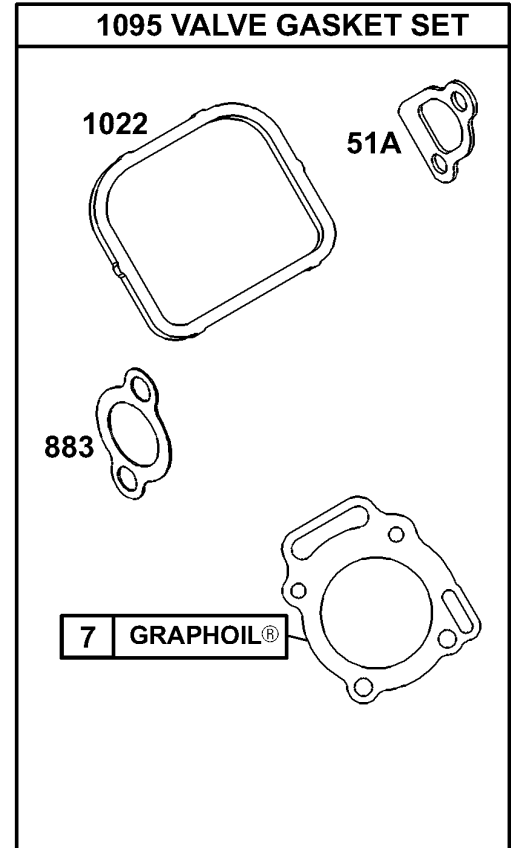
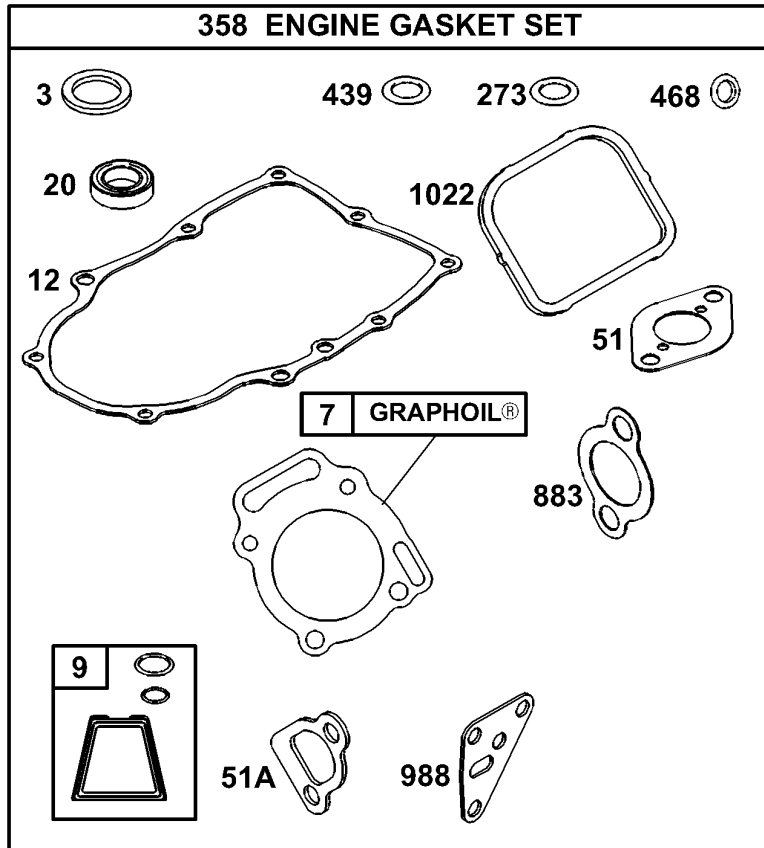


Assemblies include all parts shown in frames.

Starter Assembly Briggs and Stratton Model 350447-1331-E1

Ref	Part No.	Qty.	Description
309A		0	Starter Motor (For Replacement Starter Motor, See Ref. 309)
310A	690323	1	Bolt (Starter Motor)
311A	497608	1	Brush Set
413	693587	1	Nut (Starter Motor)
510	496881	1	Drive-Starter
544A	693548	1	Armature-Starter
797	691029	1	Nut (Brush Retainer)
797A	693167	1	Nut (Brush Retainer)
801A	808777	1	Cap-Drive
802A	691286	1	Cap-End
803A	693547	1	Housing-Starter
1051	691124	1	Lock Ring
1090	691293	1	Retainer-Brush

PROTOTYPE



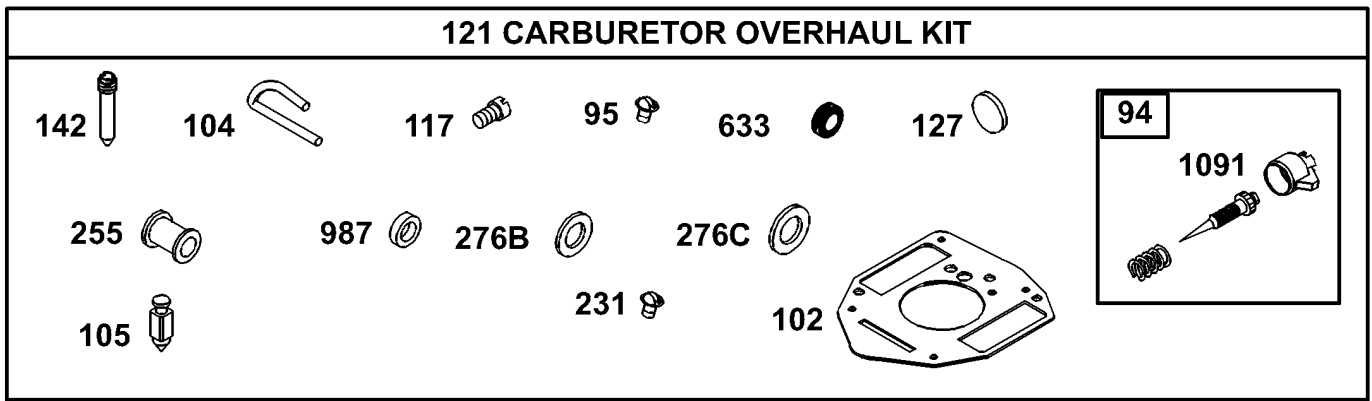
Assemblies include all parts shown in frames.

Gasket Assembly

Briggs and Stratton Model 350447-1331-E1

Ref	Part No.	Qty.	Description
373	805101	1	Seal-Oil
347	690888	1	Cylinder Head Gasket
7			
379	807688	1	Gasket-Breather
3712	691684	1	Crankcase Gasket
3720	805049	1	Seal-Oil
3751	691694	1	Gasket-Intake
3751A	692035	1	Gasket-Intake
37273	690681	1	Seal-O Ring (Oil Pump)
34276A	691766	1	Sealing Washer
7			
7358	808389	1	Gasket Set
37439	692154	1	O-Ring (Crankcase Cover)
37468	690960	1	Screw (Blower Housing Support)
34883	691613	1	Exhaust Gasket
7			
37988	692063	1	Oil Adapter Gasket
341022	806039	1	Gasket-Valve Cover
7			
71095	808391	1	Kit-Valve Overhaul

<p style="font-size: 48px; opacity: 0.5; letter-spacing: 10px;">PROTOTYPE</p>			
---	--	--	--



Assemblies include all parts shown in frames.

Carburetor Overhaul Kit Assembly Briggs and Stratton Model 350447-1331-E1

Ref	Part No.	Qty.	Description
94	808257	1	Idle Mixture Kit
95	690718	1	Screw (Throttle Valve)
102	692077	1	Gasket-Carburetorbody
104	690723	1	Pin-Float Hinge
105	692078	1	Float Needle Valve
117	806126	1	Jet-Main
121	808395	1	Carburetor Kit
127	690727	1	Plug-Welch
142	806128	1	Carburetor Nozzle
231	690718	1	Screw (Throttle Valve)
255	690721	1	Bushing-Choke Shaft
276B	690724	1	Sealing Washer
276C	806137	1	Washer
633	690722	1	Seal-Choke Shaft
987	806131	1	Seal-Shaft
1091	691516	1	Cap-Limiter

PROTOTYPE



PROTOTYPE