



Boom Supply Hose Update Kit

Multi-Pro® 5600 Turf Sprayer

Model No. 107-8707

Form No. 3351-149

Installation Instructions

Note: Determine the left and right sides of the machine from the normal operating position.

Loose Parts

Description	Qty.	Use
Boom Supply Hose Assembly	1	Install the boom supply hose.
R-clamp	1	Install the boom supply hose on a sprayer without a Pro Control™ Spray System.
Barbed fitting, Banjo	2	Install the boom supply hose on a sprayer with a Pro Control Spray System.
Barbed fitting, straight	1	Install the boom supply hose on a sprayer with a Hose Reel Kit or Spray Gun Kit installed.

Preparing the Machine

1. Ensure that the machine is empty of all fluids. If chemicals have been used in the machine, flush the system thoroughly with clean water then drain the water; refer to your vehicle *Operator's Manual* for instructions.



Caution



Many chemicals are hazardous and can cause personal injury or environmental damage if you apply them improperly.

Ensure that sprayer hose connections are secure before operating the spray system.

2. Disconnect the negative battery terminal from the battery.

Installing the Boom Supply Hose

Note: The installation of the new boom supply hose will vary depending on what accessories are installed on the sprayer. Use the installation instructions appropriate for your sprayer.

Installing the Hose on a Sprayer Without the Pro Control Spray System

1. Remove the retainer securing the end of the boom supply hose to the straight fitting (located to the right of the boom supply valve) (Fig. 1).

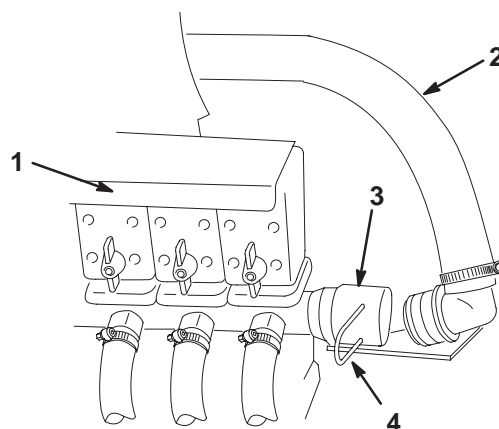


Figure 1

- | | |
|-----------------------|---------------------|
| 1. Boom supply valves | 3. Straight fitting |
| 2. Boom supply hose | 4. Retainer |

2. Remove the retainer securing the other end of the boom supply hose to the supply tee (located directly behind the boom valves).
3. Remove the R-clamp securing the boom supply hose to the sprayer.
4. Remove the boom supply hose from the sprayer.

5. Apply vegetable oil to the O-rings in the fittings of the new boom supply hose assembly.
6. Install the new boom supply hose assembly and secure it with the retainers previously removed.

Note: Ensure that the O-rings in the fittings are in place when installing the new hose assembly.

7. Secure the hose to the sprayer with the new R-clamp supplied in the kit.

Note: The remaining components in the kit are not required for this installation.

Installing the Hose on a Sprayer With the Pro Control™ Spray System

1. Remove the 2 large worm screw clamps securing the 2 boom supply hose fittings to the flow meter (Fig. 2).

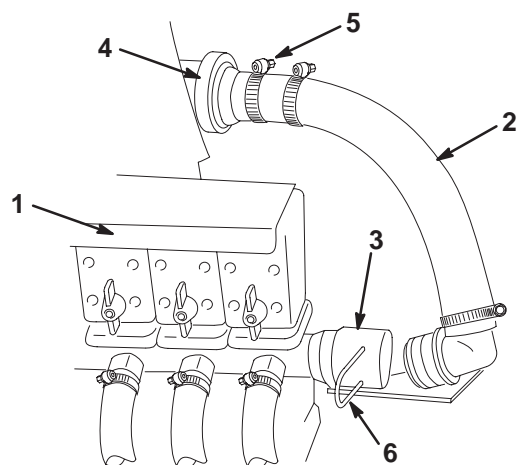


Figure 2

- | | |
|---------------------------------------|--|
| 1. Boom supply valves | 5. Remove these ratcheting hose clamps |
| 2. Boom supply hose | 6. Retainer |
| 3. Straight fitting | |
| 4. Worm screw clamp on the flow meter | |

2. Remove the retainer securing the end of the shorter boom supply hose to the straight fitting located to the right of the boom supply valves (Fig. 2).
3. Remove the retainer securing the end of the longer boom supply hose to the supply tee (located directly behind the boom valves).
4. Disconnect and remove the hose assemblies.
5. Remove and retain the 2 ratcheting hose clamps securing the fittings to each hose (Fig. 2).
6. Apply vegetable oil to the O-rings in the fittings of the new boom supply hose assembly.
7. Measure, mark, and cut the new boom supply hose assembly as shown in Figure 3.

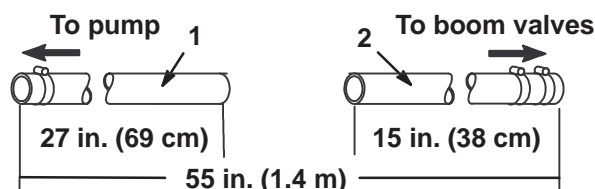


Figure 3

- | | |
|-------------------------------|--------------------------------|
| 1. Longer supply hose section | 2. Shorter supply hose section |
|-------------------------------|--------------------------------|
8. Attach the fitting on the end of the shorter supply hose section to the straight fitting located to the right of the boom supply valves with the retainer you removed previously (Fig. 2).
 9. Attach the fitting on the end of the longer supply hose section to the supply tee (located directly behind the boom valves) with the retainer you removed previously.
 10. Apply a liberal amount of liquid soap to the barbs of the 2 Banjo fittings and to the inside of the cut end of each supply hose section

Important Do not use petroleum-based lubricants such as grease or oil because they can damage the hose and contaminate the system.

11. Slide a ratcheting hose clamp (removed from the hoses in step 5) over each hose end.
12. Install the Banjo fittings all the way into the hoses, securing them with the hose clamps.

Important The fittings may be very difficult to push into the hose. It is very important, however, that you get them all the way into the hoses, ensuring that they will not leak.

13. Ensuring that the gaskets are in place, secure the 2 Banjo fittings to the ends of the flow meter using the 2 worm screw clamps you removed previously.

Note: The remaining components in the kit are not required for this installation.

Installing the Hose on a Sprayer with a Hose Reel or Spray Gun Kit

Install the kit as indicated previously for your sprayer. Initially, you will disconnect the boom supply hose from the fitting on the control valve assembly and not from the fitting on the right side of the boom valve assembly. To connect the boom supply hose to the control valve assembly, complete the following procedure:

1. Cut the boom supply hose 8 inches (20 cm) to the right of the flow meter (if equipped) or 32 inches (81 cm) from the supply tee (located directly behind the boom valves) using a hacksaw (Fig. 4). Remove the hose clamp from the loose end and discard the hose and fitting.

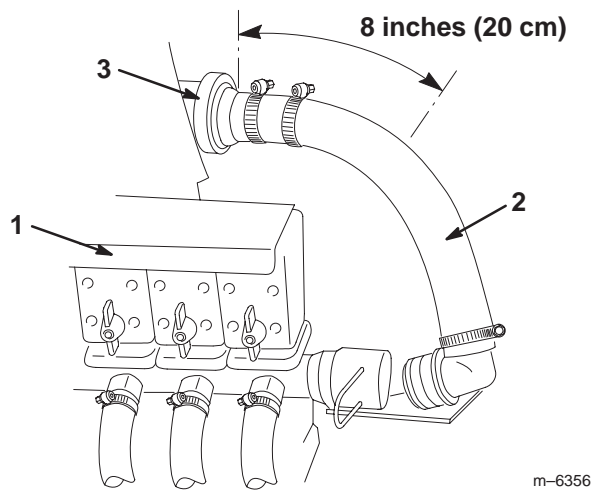


Figure 4

- | | |
|-----------------------|---------------|
| 1. Boom supply valves | 3. Flow meter |
| 2. Boom supply hose | |

2. Apply a liberal amount of liquid soap to the barb of the straight fitting and to the inside of the hose coming from the flow meter or supply tee as applicable.

Important Do not use petroleum-based lubricants such as grease or oil because they can damage the hose and contaminate the system.

3. Slide a large ratcheting hose clamp (removed from the hose in step 1) over the hose (Fig. 5).
4. Install the fitting all the way into the hose, securing it with the hose clamp (Fig. 5).

Important The fitting may be very difficult to push into the hose. It is very important, however, that you get it all the way into the hose, ensuring that it will not leak. You may need to remove the hose from the machine at the flow meter.

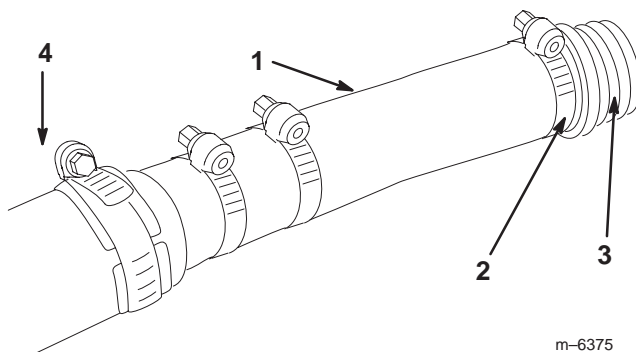


Figure 5

- | | |
|--------------------------|-----------------|
| 1. Hose | 3. Fitting |
| 2. Ratcheting hose clamp | 4. Flow divider |

5. Apply vegetable oil to the O-ring in the new fitting.

6. Connect the fitting to the control valve assembly, securing it with the retainer you removed previously.

