



# Recycler<sup>®</sup> Kit

## 38 inch Mower for TimeCutter Z Riding Mowers

Model No. 79217

Form No. 3351-151

### Installation Instructions

**Note:** Determine the left and right sides of the machine from the normal operating position.

## Loose Parts

**Note:** Use the chart below to identify parts for assembly.

Description	Qty.	Use
Rear baffle	1	Installing the baffle
Rear baffle extension	1	
Bolts, 1/4 x 3/4 inch	2	
Locknuts, 1/4 inch	2	
Front baffle	1	
Bolts, 3/8 x 7/8 inch	2	
Locknuts, 3/8 inch	2	
Carriage bolt, 5/16 x 3/4 inch	1	
Lock nut, 5/16 inch	1	
Kicker plates	4	Installing the kicker plates
Phillips head screw, #8 x 5/8 inch	8	
Recycler blades	2	Installing the blades
Decal	1	Installing the decal
Discharge cover	1	Installing the discharge cover
Bolt, 1/4 x 2-5/8 inch	2	
Nut, 1/4 inch	2	

## Installing the Baffle

1. Stop the engine and remove the ignition key.
2. Remove the mower from the unit as outlined in your *Operator's Manual*.
3. Turn the mower upside down.
4. Remove the four bolts and four flange nuts securing the existing rear baffle and extension baffle to the deck and remove the baffle (Fig. 2). Save the fasteners for later use.

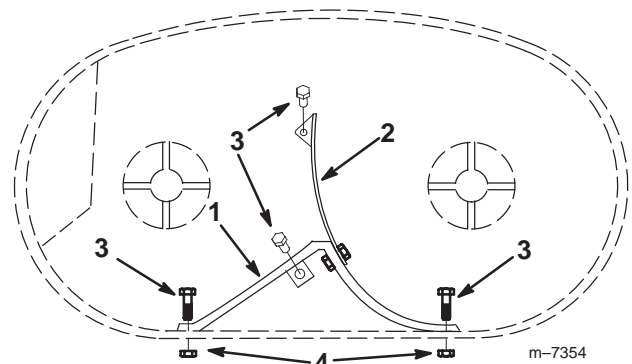
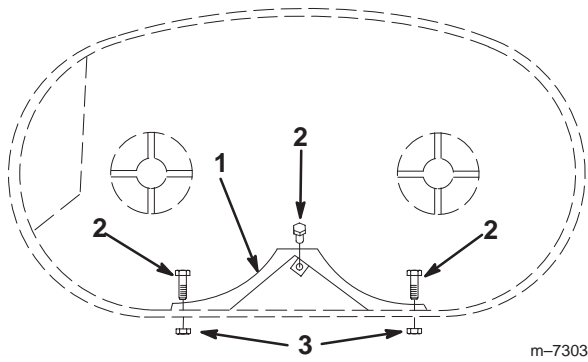


Figure 1

- |                     |                |
|---------------------|----------------|
| 1. Rear baffle      | 3. Bolts,      |
| 2. Extension baffle | 4. Flange nuts |

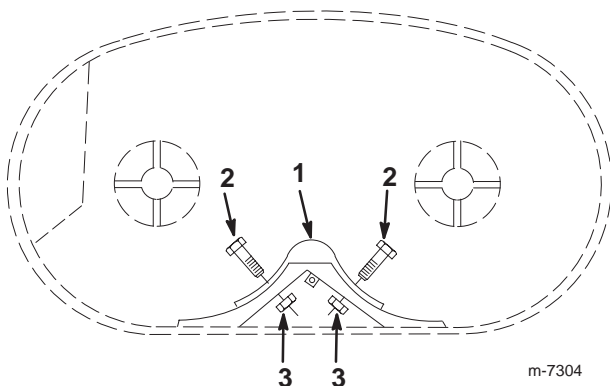
5. Install the new rear baffle using three bolts and three flange nuts removed previously (Fig. 2).



**Figure 2**

1. Rear baffle
2. Bolts, 5/16 x 5/8 inch
3. Flange nuts, 5/18 inch

6. Center the rear weldment as shown in Figure 3. Install the rear baffle to deck using two bolts (1/4 x 3/4 inch) and 2 lock nuts (1/4 inch).

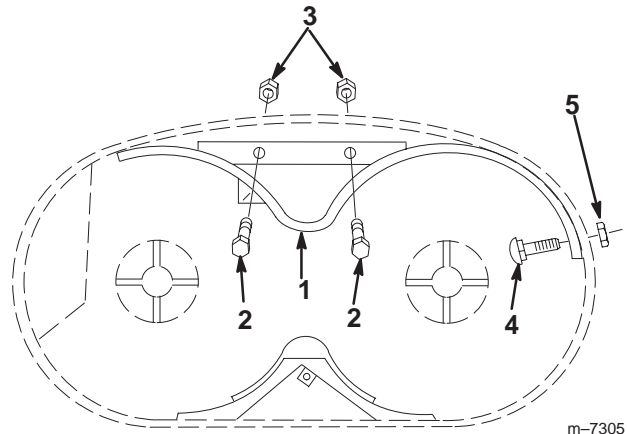


**Figure 3**

1. Rear baffle
2. Bolt, 1/4 x 3/4 inch
3. Lock nut, 1/4 inch

7. Position the front baffle on the deck and align holes. Secure the baffle using two bolts (3/8 x 7/8 inch) and two locknuts (3/8 inch) as shown in Figure 4.

8. Secure the side of the front baffle with a carriage bolt (5/16 x 3/4 inch) and lock nut (5/16 inch). Nut must be on the outside of the deck (Fig. 4)



**Figure 4**

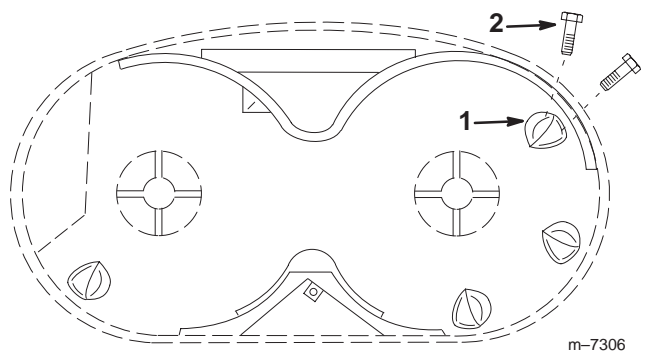
1. Front baffle
2. Bolt, 3/8 x 7/8 inch
3. Lock nut, 3/8 inch
4. Carriage bolt, 5/16 x 3/4 inch
5. Lock nut, 5/16 inch

## Installing the Kicker Plates

1. Install the kicker plates with holes toward the top of the deck using eight phillips head screws (#8 x 5/8 inch). The screws come from the top, down through the deck, and into the kicker (Fig. 5).

**Note:** Some of the kicker plate may have rivets in the screw holes. In this event, drill out the rivets before installing.

2. The long slope of the kickers must be face inward as the kickers placed in clockwise fashion (Fig. 5).



**Figure 5**

1. Kicker plate, long slope facing inward
2. Phillips head screw, (#8 x 5/8 inch)

## Installing the Blades

1. Remove the standard side discharge blades from the mower as outlined in your *Operator's Manual*.

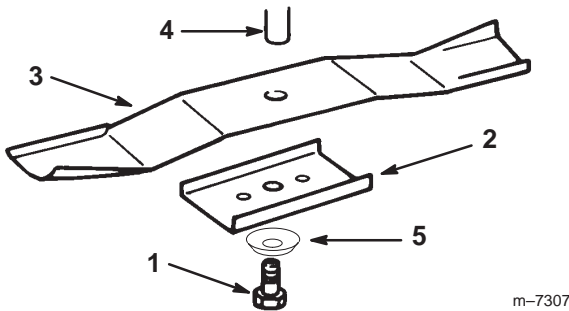
! **Warning** !

**A blade that is bent or damaged could break apart and could seriously injure or kill you or bystanders.**

- Always replace bent or damaged blade with a new blade.
- Never file or create sharp notches in the edges or surfaces of blade.

2. Install the Recycler blades, blade retainer, curved washer (cupped side toward the blade), and the blade bolt (Fig. 6).

**Important** The curved part of the blade must be pointing toward the inside of the mower to assure proper cutting.



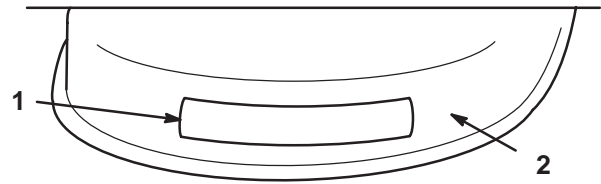
**Figure 6**

- |                   |                  |
|-------------------|------------------|
| 1. Blade bolt     | 4. Spindle       |
| 2. Blade retainer | 5. Curved washer |
| 3. Recycler blade |                  |

3. Torque the blade bolt to 35-65 ft-lb (42-88 N·m).
4. Check that the blades clear baffles and bolt heads; if necessary loosen bolts on spindle and reposition spindle so that blades clear bolts.

## Installing the Decal

Install the decal on left side of mower (Fig. 7).



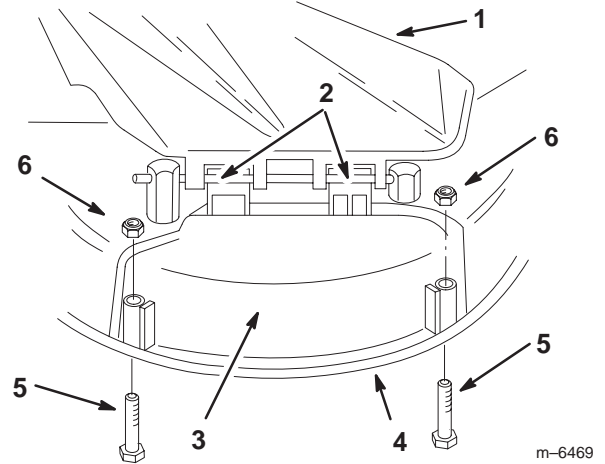
**Figure 7**

- |                   |                       |
|-------------------|-----------------------|
| 1. Recycler decal | 2. Left side of mower |
|-------------------|-----------------------|

## Installing the Discharge Cover

1. Stop the engine and remove the ignition key.
2. Lift the grass deflector and slide the tabs on top of the discharge cover under the grass deflector retaining rod. Rotate the discharge cover down over the opening, and onto the lower lip of the mower (Fig. 8).
3. Secure the discharge cover to the lower lip of the mower with 2 bolts (1/4 x 2-5/8 inch) and 2 nuts (1/4 inch) (Fig. 8).

**Note:** Do not over-tighten the nuts, this could distort the cover and cause blade contact.



**Figure 8**



- |                             |                           |
|-----------------------------|---------------------------|
| 1. Grass deflector          | 4. Lower lip of mower     |
| 2. Tabs under retaining rod | 5. Bolt, 1/4 x 2-5/8 inch |
| 3. Discharge cover          | 6. Nut, 1/4 inch          |

## Removing the Discharge Cover

To convert to side discharge mode do the following procedure.

1. Stop the engine and remove the ignition key.
2. Remove the 2 bolts (1/4 x 2-3/4 inch) and 2 nuts (1/4 inch) that secure the discharge cover to the mower (Fig. 8).
3. Remove the discharge cover and lower the grass deflector over the discharge opening.

## Side Discharge or Mulch Grass

 **Danger** 

**Without the grass deflector, discharge cover, or complete grass catcher assembly mounted in place, you and others are exposed to blade contact and thrown debris. Contact with rotating mower blade(s) and thrown debris will cause injury or death.**

- **Never remove the grass deflector from the mower because the grass deflector routes material down toward the turf. If the grass deflector is ever damaged, replace it immediately.**
- **Never put your hands or feet under the mower.**
- **Never try to clear discharge area or mower blades unless you move the power take off (PTO) to *disengage* and turn the ignition key to *off*. Also remove the key and pull the wire off the spark plug(s).**

**Note:** To use the mower in side discharge mode, only the discharge cover must be removed. Mounting hardware must be installed in open holes.

Ensure the mower has a hinged grass deflector that disperses clippings to the side and down toward the turf, while in side discharge mode.

To mulch grass clippings the discharge cover must be installed into the opening in the side of the mower; refer to Installing the Discharge Cover, page 3.

## Recycling Tips

### Selecting the Proper Height-of-Cut Setting to Suit the Conditions

Remove approximately one inch or no more than 1/3 of the grass blade when cutting. In exceptionally lush and dense grass you may have to raise the height-of-cut setting another notch or convert to side discharge or bagging operations.

### Mowing in Extreme Conditions

Air is required to cut and recut grass clippings in the mower housing, so do not set the height-of-cut too low or totally surround the housing by uncut grass. Always have one side of the mower housing free from uncut grass, allowing air to be drawn into housing. When making an initial cut through the center of the uncut area, operate the machine at a slower speed and back up if the mower starts to clog.

### Mowing at the Proper Intervals

Under normal conditions you'll need to mow every 4-5 days. However, grass grows at different rates at different times. Thus, in order to maintain the same height-of-cut, which is a good practice, you'll need to cut more frequently in early spring; as the grass growth rate slows in mid summer, cut only every 8-10 days. If you are unable to mow for an extended period due to the weather conditions or other reasons, convert to side discharge or bagging options or mow first with the height-of-cut at a high level; then mow again 2-3 days later with a lower height setting.

### Always Mow with Sharp Blades

A sharp blade cuts cleanly and without tearing or shredding the grass blade like a dull blade. Tearing and shredding causes the grass to turn brown at the edges which impairs growth and increases susceptibility to disease.

### Cleaning After Operating

To ensure optimum performance, clean the underside of the mower housing. If residue is allowed to build up in mower housing, cutting performance will decrease.