



Recycler Kit

Groundsmaster® e3200 Traction Unit with 60in Side Discharge Rotary Mower

Model No. 32319

Installation Instructions

1

Preparing the Machine

No Parts Required

Procedure

1. Park the machine on a level surface.
2. Engage the parking brake.
3. Raise the mower deck to the TRANSPORT position; refer to your *Operator's Manual*.
4. Shut off the engine and remove the key.
5. Turn the battery-disconnect switch to the OFF position; refer to the traction unit *Operator's Manual*.
6. Rotate the mower deck to the SERVICE position; refer to your *Operator's Manual*.

2

Removing the Standard Blades

No Parts Required

Procedure

1. Place a wrench on the flat of the blade retainer or hold the blade end using a rag or thickly padded glove.
2. Remove the blade bolt, washer, and blade from the spindle shaft.

Important: Retain the parts for later installation.

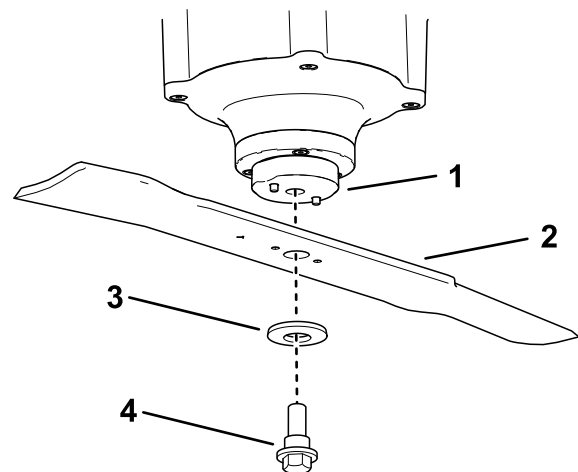


Figure 1

- | | |
|-------------------|---------------|
| 1. Blade retainer | 3. Washer |
| 2. Standard blade | 4. Blade bolt |

g376322



3

Removing the Existing Baffles

No Parts Required

Procedure

Note: In the steps below, the bolts are threaded into the mower deck. Remove the nuts before removing the bolts.

1. Remove the 2 flange nuts that secure the baffles in place (Figure 2).
2. Remove the 2 bolts and 2 nuts from the adjustable flow baffle (Figure 2).
3. Remove the 3 bolts and 3 nuts that secure the baffles in place (Figure 2).

Note: Retain the baffles and fasteners for use when changing back to side-discharge mode.

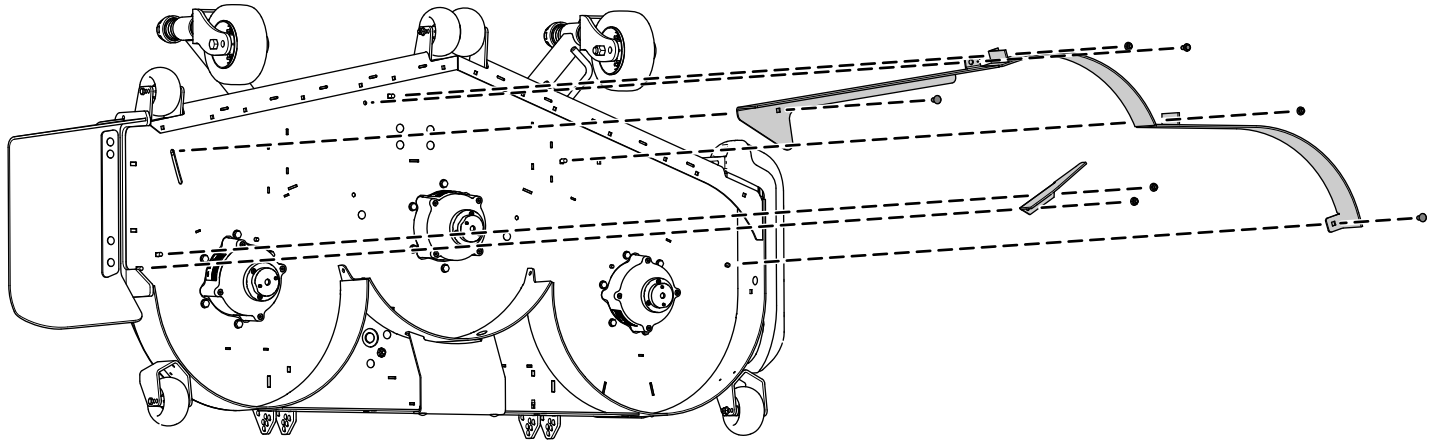


Figure 2

g455051

4

Installing the Discharge Cover Plate

Parts needed for this procedure:

1	Discharge cover plate
1	Carriage bolt (5/16 x 7/8 inch)
1	Flange nut (5/16 inch)
2	Carriage bolt (3/8 x 1-1/4 inches)
2	Locknut (3/8 inch)

Procedure

1. Secure the discharge cover plate to the outside of the mounting bracket using 2 carriage bolts (3/8 x 1-1/4 inches) and 2 locknuts (3/8 inch) as shown in [Figure 3](#).
2. Secure the tab to the inside of the mower deck using 1 carriage bolt (5/16 x 7/8 inch) and 1 flange nut (5/16 inch) as shown in [Figure 3](#).

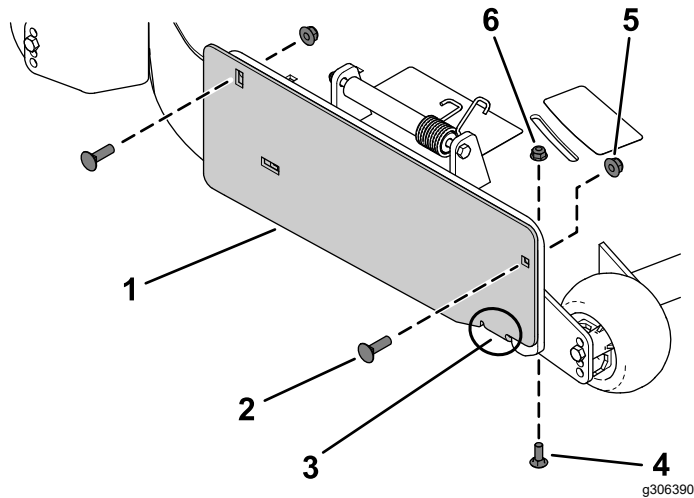


Figure 3

- | | |
|---------------------------------------|------------------------------------|
| 1. Discharge cover plate | 4. Carriage bolt (5/16 x 7/8 inch) |
| 2. Carriage bolt (3/8 x 1-1/4 inches) | 5. Locknut (3/8 inch) |
| 3. Tab on the discharge cover plate | 6. Flange nut (5/16 inch) |

5

Installing the Recycler Baffles

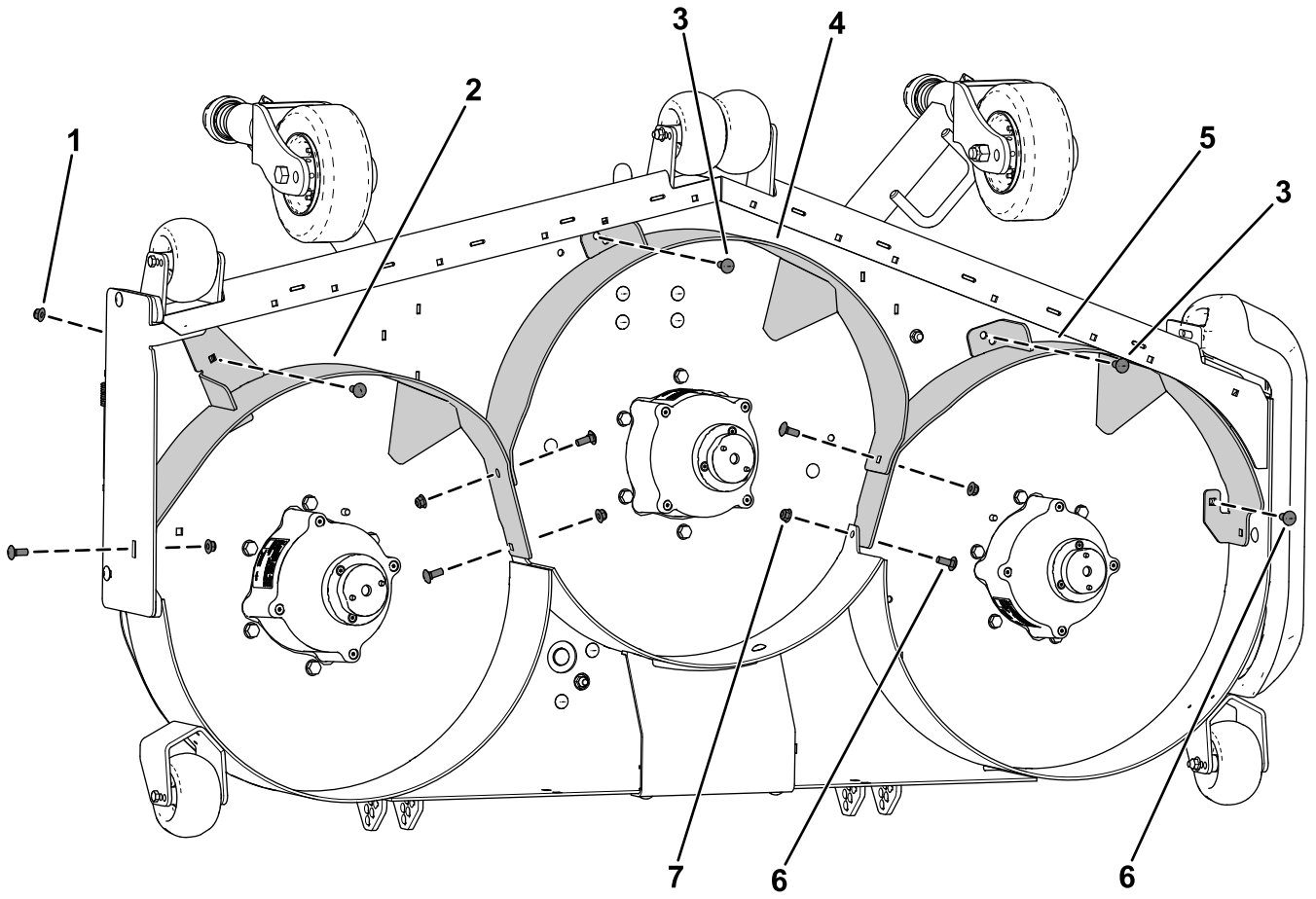
Parts needed for this procedure:

1	Left baffle
1	Center baffle
1	Right baffle
7	Carriage bolt (3/8 x 1 inch)
8	Locknut (3/8 inch)
2	Hex-washer-head bolt (3/8 x 1 inch)
1	Flange nut (3/8 inch)

Procedure

Note: Loosely install the baffles to align the baffles with all the holes in the mower deck ([Figure 4](#)).

1. Position the right baffle into the mower deck.
2. Loosely install the right baffle to the discharge plate using 1 carriage bolt (3/8 x 1 inch) and 1 locknut (3/8 inch) as shown in [Figure 4](#).
3. Loosely install the right baffle to the mower deck using 1 carriage bolt (3/8 x 1 inch) and 1 flange nut (3/8 inch) as shown in [Figure 4](#).
4. Position the left baffle into the mower deck.
5. Loosely install the left baffle to the mower deck using 1 carriage bolt (3/8 x 1 inch), 1 hex-washer-head bolt (3/8 x 1 inch), and 2 locknuts (3/8 inch) as shown in [Figure 4](#).
6. Position the center baffle into the mower deck.
7. Loosely install the center baffle to the right baffle and left baffle using 4 carriage bolts (3/8 x 1 inch) and 4 locknuts (3/8 inch) as shown in [Figure 4](#).
8. Loosely install the center baffle to the mower deck using 1 hex-washer-head bolt (3/8 x 1 inch) and 1 locknut (3/8 inch) as shown in [Figure 4](#).



g576889

Figure 4

- | | |
|--|---------------------------------|
| 1. Flange nut (3/8 inch) | 5. Left baffle |
| 2. Right baffle | 6. Carriage bolt (3/8 x 1 inch) |
| 3. Hex-washer-head bolt (3/8 x 1 inch) | 7. Locknut (3/8 inch) |
| 4. Center baffle | |

6

Installing the Recycler Blades

Parts needed for this procedure:

3	Recycler blade
---	----------------

Procedure

Install the recycler blade, washer, and blade bolt and tighten the blade bolt to 68 to 81 N·m (50 to 60 ft-lb) as shown in [Figure 5](#).

Important: Ensure that the washer is oriented as shown to ensure proper cutting.

Important: The curved sail of the blade must point up to ensure proper cutting.

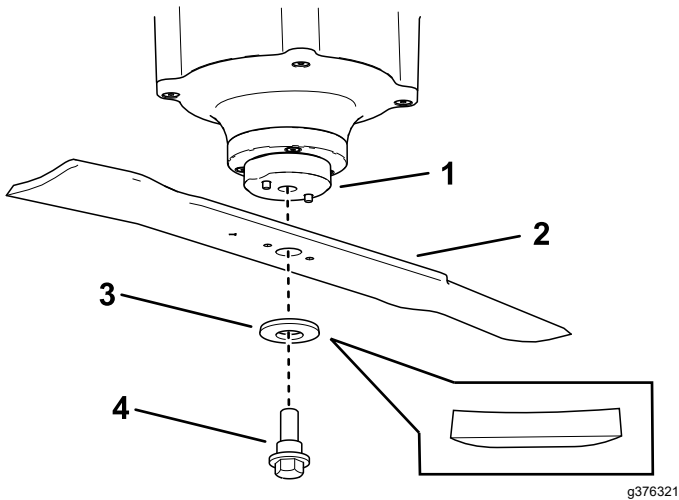


Figure 5

- | | |
|-------------------|---------------|
| 1. Blade retainer | 3. Washer |
| 2. Recycler blade | 4. Blade bolt |

7

Tightening the Fasteners

No Parts Required

Procedure

⚠ WARNING

When servicing the blade, the blade can still move even though the power source is off. The blade is sharp; contacting the blade can result in serious personal injury.

- Keep your hands and feet away from a moving blade.
 - Wear gloves when servicing the blade.
1. Tighten all nuts and bolts for the baffles.
 2. Rotate the blades and ensure that there is clearance between the blades and the baffles. If there is not, loosen the baffle(s) until there is clearance and then secure the baffle(s).

8

Completing the Installation

No Parts Required

Procedure

Rotate the mower deck to the MOWING position; refer to your *Operator's Manual*.

9

Converting Back to Side Discharge

No Parts Required

Procedure

1. Park the machine on a level surface.
2. Engage the parking brake.
3. Raise the mower deck to the TRANSPORT position; refer to your *Operator's Manual*.
4. Shut off the engine and remove the key.
5. Rotate the mower deck to the SERVICE position; refer to your *Operator's Manual*.
6. Remove the recycler baffles and blades.

Note: Retain the fasteners, baffles, and blades for use when changing back to recycler mode.

7. Replace the recycler blades with standard blades; tighten the blade bolt to 68 to 81 N·m (50 to 60 ft-lb).
8. Install the side-discharge baffles and fasteners.

Note: You must plug all open holes to prevent sand and/or other small objects from being thrown up through the deck.

Notes:



Count on it.