



Recycler Kit

Groundsmaster® e3200 or e3300 Series Traction Unit with 72in
Rear Discharge Rotary Mower

Model No. 32322

Installation Instructions

1

Preparing the Machine

No Parts Required

Procedure

1. Park the machine on a level surface.
2. Engage the parking brake.
3. Raise the cutting unit to the TRANSPORT position; refer to your *Operator's Manual*.
4. Shut off the engine and remove the key.
5. Turn the battery-disconnect switch to the OFF position; refer to the traction unit *Operator's Manual*.
6. Rotate the cutting unit to the SERVICE position; refer to your *Operator's Manual*.



2

Removing the Plugs

No Parts Required

Procedure

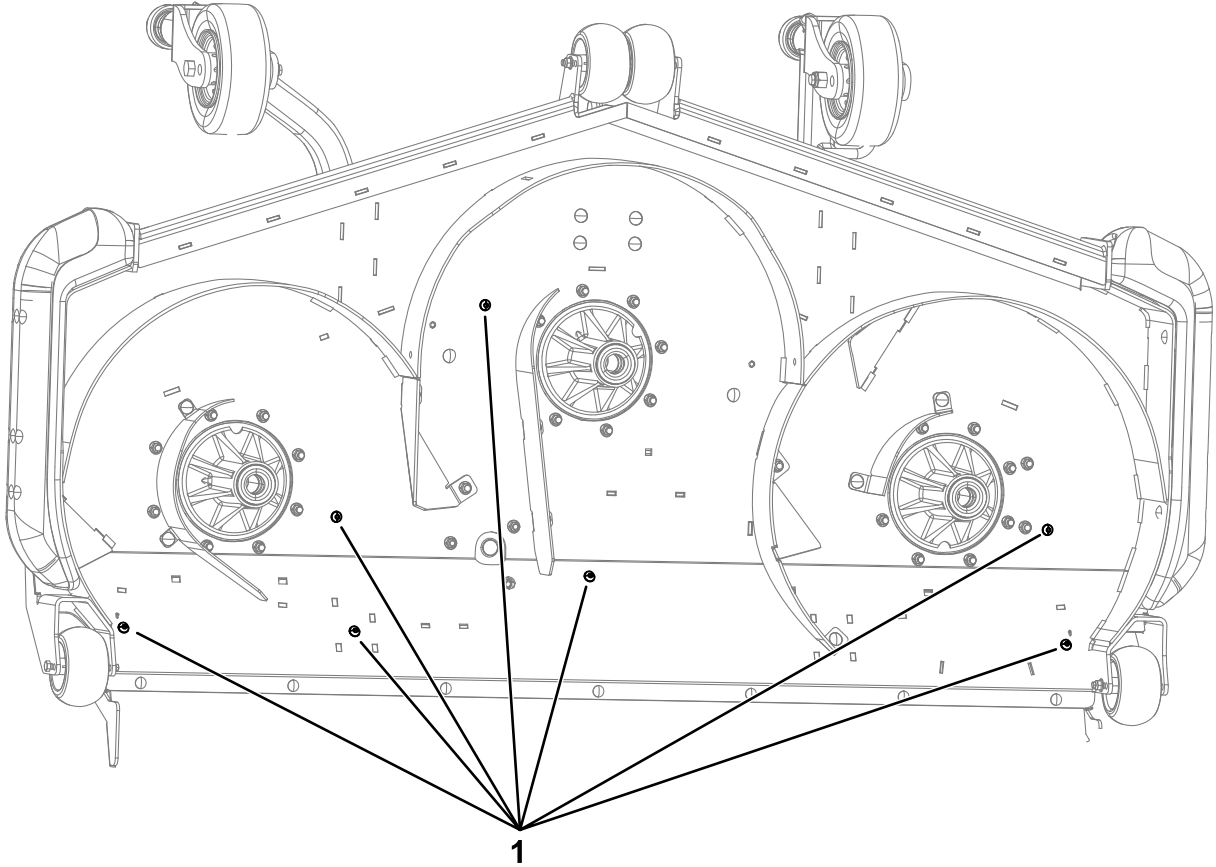


Figure 1

g308835

- 1. Plugs

3

Removing the Blades

No Parts Required

Procedure

Remove the blades from the cutting unit; refer to the blade removal procedure in the cutting unit *Operator's Manual*.

4

Removing the Existing Baffles

No Parts Required

Procedure

Remove the existing baffles and fasteners from the mower deck as shown in [Figure 2](#).

Retain the parts if you remove the kit in the future.

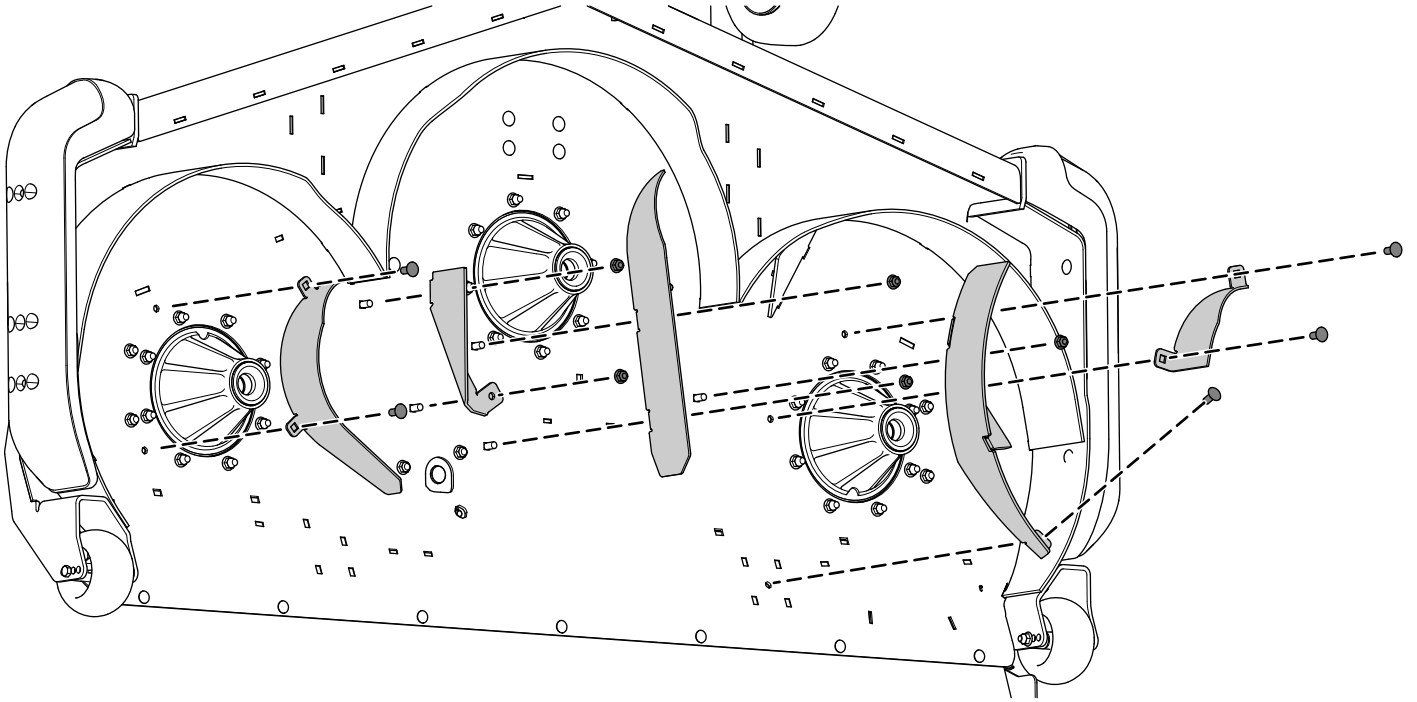


Figure 2

g308833

5

Installing the Recycler Baffles

Parts needed for this procedure:

1	Rear, right baffle
1	Rear, center baffle
1	Rear, left baffle
2	Side kicker baffle
1	Center kicker baffle
12	Locknut (3/8 inch)
12	Carriage bolt (3/8 x 7/8 inch)

Procedure

1. Loosely secure the rear, right baffle to the mower deck using 2 carriage bolts (3/8 x 7/8 inch) and 2 locknuts (3/8 inch) as shown in [Figure 3](#).

2. Loosely secure the rear, left baffle to the mower deck using 2 carriage bolts (3/8 x 7/8 inch) and 2 locknuts (3/8 inch) as shown in [Figure 3](#).
3. Loosely secure the rear, center baffle to the mower deck using 3 carriage bolts (3/8 x 7/8 inch) and 3 locknuts (3/8 inch) as shown in [Figure 3](#).
4. Loosely secure the rear, center baffle to the rear, right baffle and rear, left baffle using 2 carriage bolts (3/8 x 7/8 inch) and 2 locknuts (3/8 inch) as shown in [Figure 3](#).
5. Loosely secure the 2 side kicker baffles and center kicker baffle using 3 carriage bolts (3/8 x 7/8 inch) and 3 locknuts (3/8 inch) as shown in [Figure 3](#).

Note: The hooked end of each kicker baffle attaches to the slot in the chamber baffle.

Note: You may need to loosen the mating baffle to allow the hooked end of the kicker baffle to fit correctly.

6. Plug the holes using the hardware removed in [procedure 2 Removing the Plugs \(page 2\)](#).
Install carriage bolts in the square holes. Install button-head bolts in round holes.

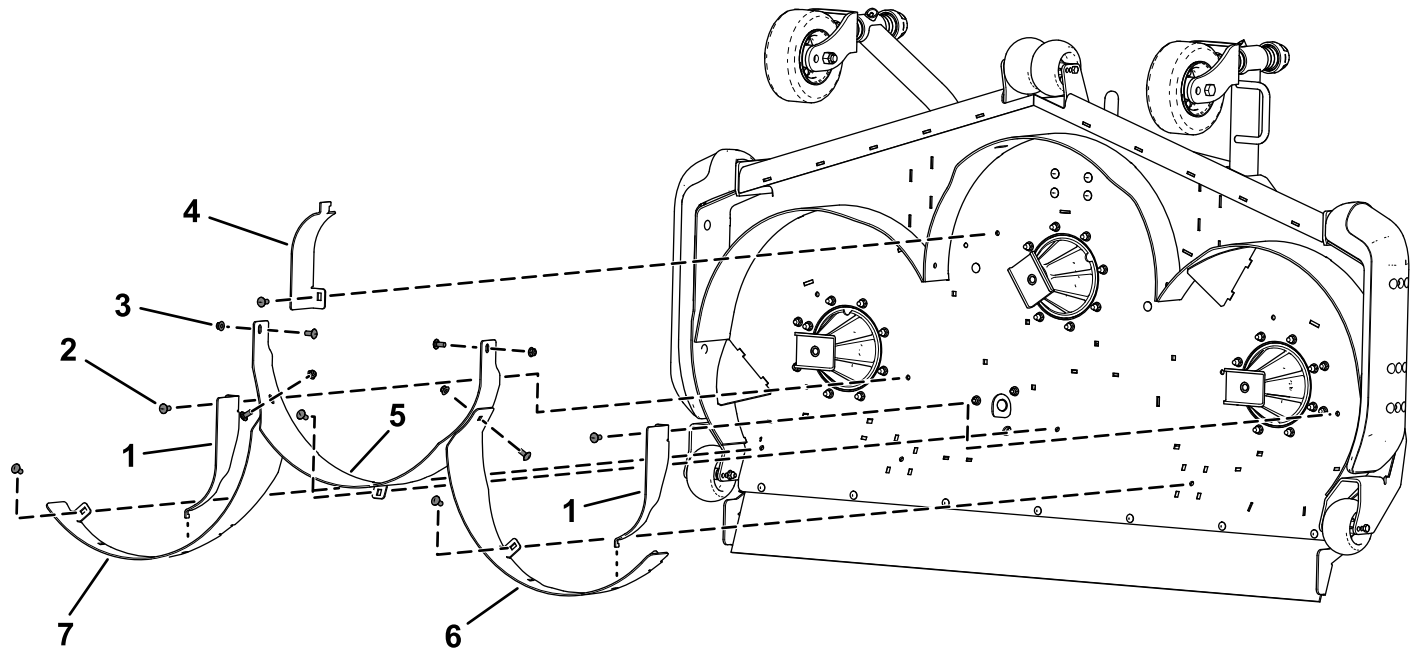


Figure 3

g306198

1. Side kicker baffle
2. Carriage bolt (3/8 x 7/8 inch)
3. Locknut (3/8 inch)
4. Center kicker baffle
5. Rear, center baffle
6. Rear, left baffle
7. Rear, right baffle

6

Installing the Recycler Blades

Parts needed for this procedure:

3	Recycler blade
---	----------------

Procedure

Install the blades to the cutting unit; refer to the blade installation procedure in the cutting unit *Operator's Manual*.

7

Tightening the Hardware

No Parts Required

Procedure

1. Tighten all nuts and bolts for the baffles.
2. Rotate the blades and ensure that there is clearance between the blades and the baffles. If there is not, loosen the baffle(s) until there is clearance and then secure the baffle(s).

8

Completing the Installation

No Parts Required

Procedure

Rotate the cutting unit to the MOWING position; refer to your *Operator's Manual*.

9

Converting Back to Rear Discharge

No Parts Required

Procedure

1. Park the machine on a level surface.
2. Engage the parking brake.
3. Raise the cutting unit to the TRANSPORT position; refer to your *Operator's Manual*.
4. Shut off the engine and remove the key.
5. Rotate the cutting unit to the SERVICE position; refer to your *Operator's Manual*.
6. Remove the recycler baffles.
Retain the hardware.
7. Replace the recycler blades with standard blades (if applicable).
8. Install the hex-socket bolts (3/8 x 3/4 inch) and the flange nuts (3/8 inch) in the holes on top of the deck with the bolt head underneath.

Note: You must plug all open holes not covered by belt shields or the frame to prevent sand and/or other small objects from being thrown up through the deck.

Operation

Understanding Energy Consumption

A Recycler Kit (equipped on the cutting unit) may increase energy use. To extend operating time, do at least one of the following options:

- Remove the existing recycler blades and install low-sail blades; refer to the blade removal and installation procedure in your cutting unit *Operator's Manual*.
- Reduce the cutting-unit blade speed; refer to the blade speed instructions in the traction unit *Operator's Manual*.

Notes:

Notes:



Count on it.