



Recycler Kit

Groundsmaster® e3200 or e3300 Series Traction Unit with 72in Side Discharge Rotary Mower

Model No. 32323

Installation Instructions

1

Preparing the Machine

No Parts Required

Procedure

1. Park the machine on a level surface.
2. Engage the parking brake.
3. Raise the cutting unit to the TRANSPORT position; refer to your *Operator's Manual*.
4. Shut off the machine and remove the key.
5. Turn the battery-disconnect switch to the OFF position; refer to the traction unit *Operator's Manual*.
6. Rotate the cutting unit to the SERVICE position; refer to your *Operator's Manual*.

2

Removing the Blades

No Parts Required

Procedure

Remove the blades from the cutting unit; refer to the blade removal procedure in the cutting unit *Operator's Manual*.



3

Removing the Existing Baffles

No Parts Required

Procedure

Note: In the steps below, the bolts are threaded into the mower deck. Remove the nuts before removing the bolts.

1. Remove the 2 flange nuts that secure the baffles in place (Figure 1).
2. Remove the 2 bolts and 2 nuts from the adjustable flow baffle (Figure 1).
3. Remove the 3 bolts and 3 nuts that secure the baffles in place (Figure 1).

Note: Retain the baffles and fasteners for use when changing back to side-discharge mode.

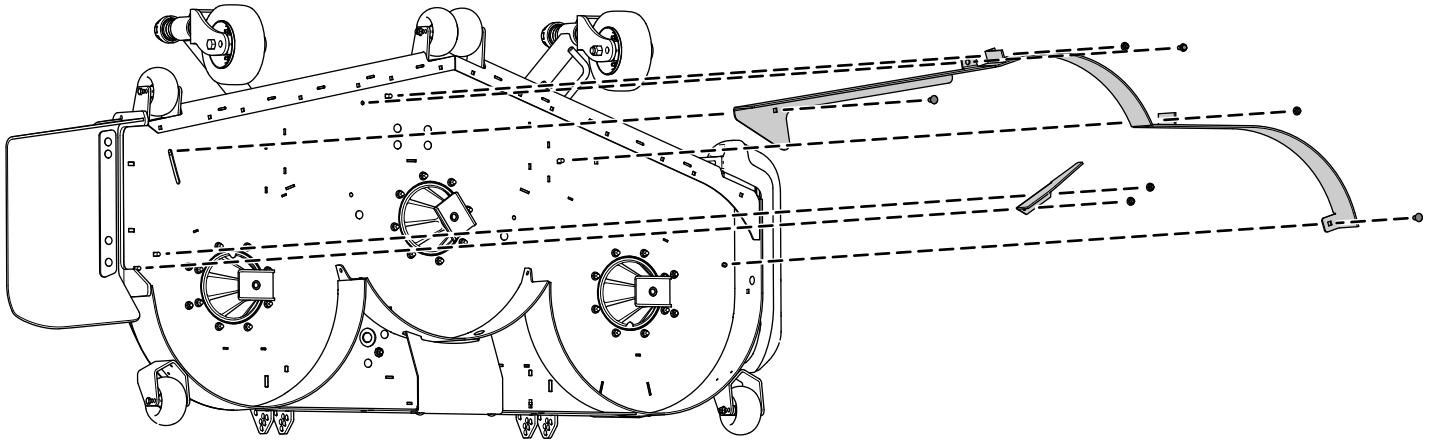


Figure 1

g309006

4

Installing the Discharge Cover Plate

Parts needed for this procedure:

1	Discharge cover plate
1	Carriage bolt (5/16 x 7/8 inch)
1	Flange nut (5/16 inch)
2	Carriage bolt (3/8 x 1-1/4 inches)
2	Locknut (3/8 inch)

Procedure

1. Secure the discharge cover plate to the outside of the mounting bracket using 2 carriage bolts (3/8 x 1-1/4 inches) and 2 locknuts (3/8 inch) as shown in [Figure 2](#).
2. Secure the tab to the inside of the mower deck using 1 carriage bolt (5/16 x 7/8 inch) and 1 flange nut (5/16 inch) as shown in [Figure 2](#).

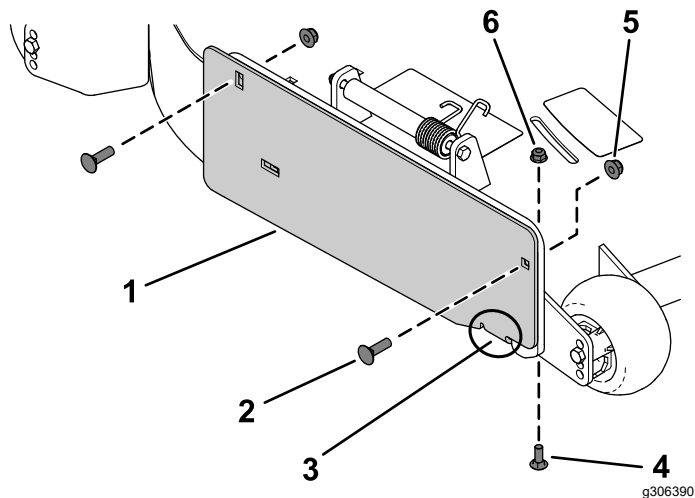


Figure 2

- | | |
|---------------------------------------|------------------------------------|
| 1. Discharge cover plate | 4. Carriage bolt (5/16 x 7/8 inch) |
| 2. Carriage bolt (3/8 x 1-1/4 inches) | 5. Locknut (3/8 inch) |
| 3. Tab on the discharge cover plate | 6. Flange nut (5/16 inch) |

5

Installing the Recycler Baffles

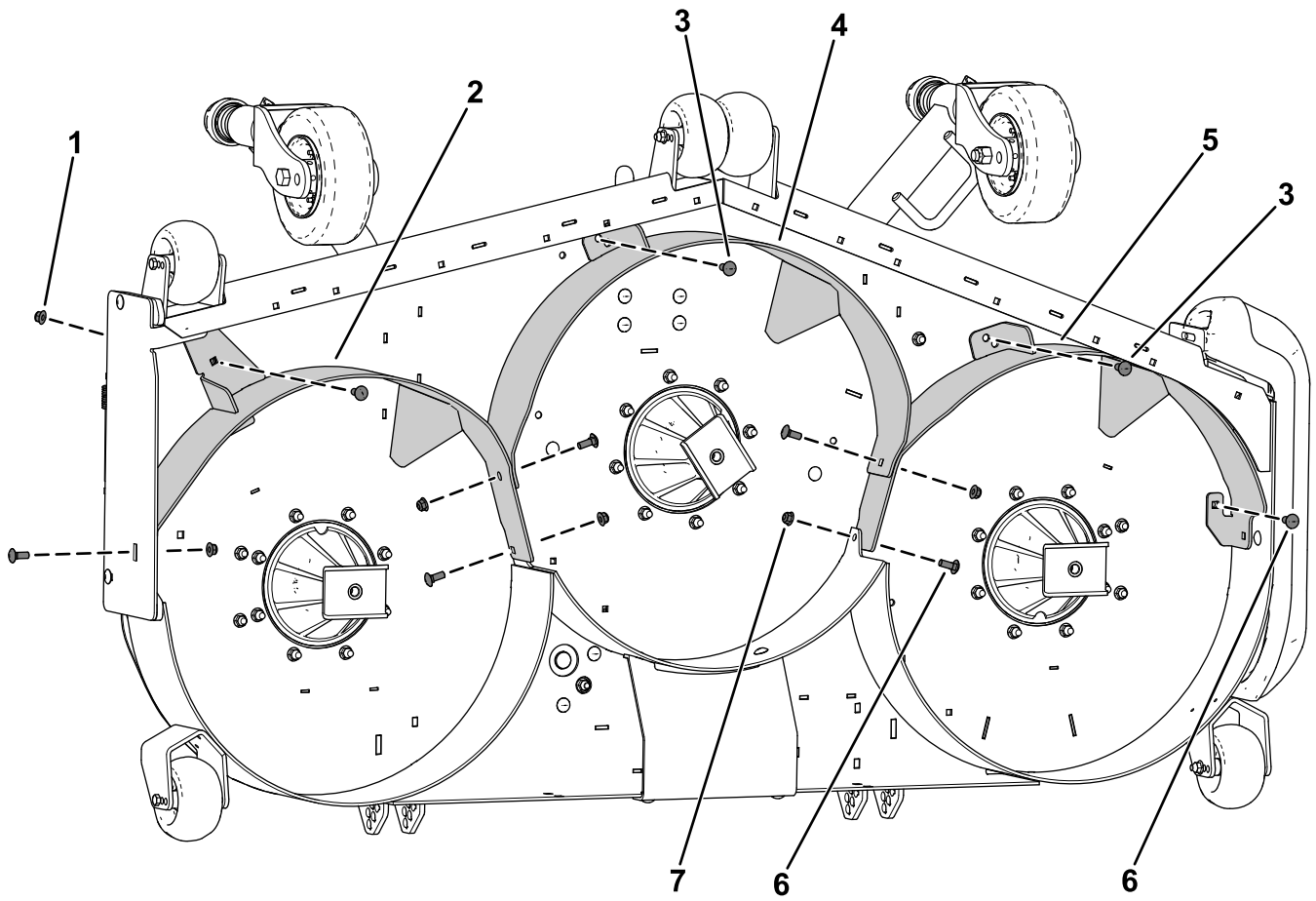
Parts needed for this procedure:

1	Left baffle
1	Center baffle
1	Right baffle
7	Carriage bolt (3/8 x 1 inch)
8	Locknut (3/8 inch)
2	Hex-washer-head bolt (3/8 inch)
1	Flange nut (3/8 inch)

Procedure

Note: Loosely install the baffles to align the baffles with all the holes in the mower deck ([Figure 3](#)).

1. Position the right baffle into the mower deck.
2. Loosely install the right baffle to the discharge plate using 1 carriage bolt (3/8 x 1 inch) and 1 locknut (3/8 inch) as shown in [Figure 3](#).
3. Loosely install the right baffle to the mower deck using 1 carriage bolt (3/8 x 1 inch) and 1 flange nut (3/8 inch) as shown in [Figure 3](#).
4. Position the left baffle into the mower deck.
5. Loosely install the left baffle to the mower deck using 1 carriage bolt (3/8 x 1 inch), 1 hex-washer-head bolt (3/8 x 1 inch), and 2 locknuts (3/8 inch) as shown in [Figure 3](#).
6. Position the center baffle into the mower deck.
7. Loosely install the center baffle to the right baffle and left baffle using 4 carriage bolts (3/8 x 1 inch) and 4 locknuts (3/8 inch) as shown in [Figure 3](#).
8. Loosely install the center baffle to the mower deck using 1 hex-washer-head bolt (3/8 x 1 inch) and 1 locknut (3/8 inch) as shown in [Figure 3](#).



g576877

Figure 3

- | | |
|--|---------------------------------|
| 1. Flange nut (3/8 inch) | 5. Left baffle |
| 2. Right baffle | 6. Carriage bolt (3/8 x 1 inch) |
| 3. Hex-washer-head bolt (3/8 x 1 inch) | 7. Locknut (3/8 inch) |
| 4. Center baffle | |

6

Installing the Kickers For 72-inch Mower Decks Only

Parts needed for this procedure:

2	Kicker
4	Carriage bolt (5/16 x 7/8 inch)
4	Flange nut (5/16 inch)

Procedure

1. Remove the 4 plugs from the mower deck (Figure 4).

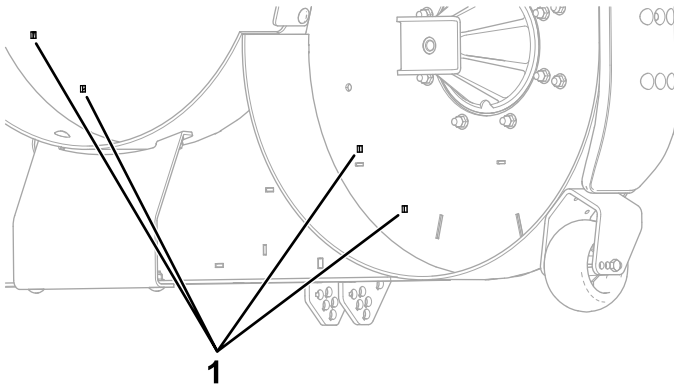


Figure 4

g309133

1. Plugs

2. Secure the 2 kickers to the mower deck using 4 carriage bolts (5/16 x 7/8 inch) and 4 flange nuts (5/16 inch) as shown in Figure 5.

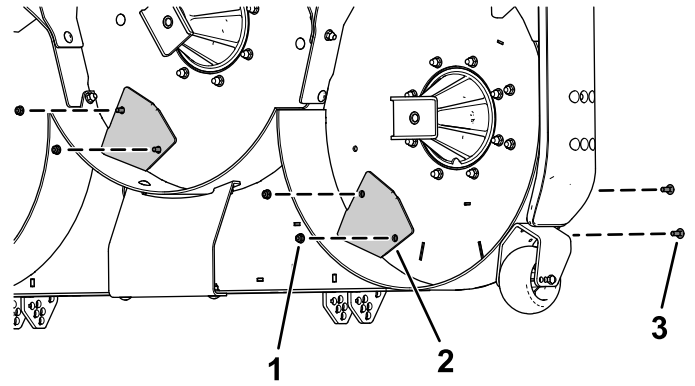


Figure 5

g309132

1. Carriage bolt (5/16 x 7/8 inch)
2. Kicker
3. Flange nut (5/16 inch)

7

Installing the Recycler Blades

Parts needed for this procedure:

3	Recycler blade
---	----------------

Procedure

Install the blades to the cutting unit; refer to the blade installation procedure in the cutting unit *Operator's Manual*.

8

Tightening the Hardware

No Parts Required

Procedure

1. Tighten all nuts and bolts for the baffles.
2. Rotate the blades and ensure that there is clearance between the blades and the baffles. If there is not, loosen the baffle(s) until there is clearance and then secure the baffle(s).

9

Completing the Installation

No Parts Required

Procedure

Rotate the cutting unit to the MOWING position; refer to your *Operator's Manual*.

Operation

Understanding Energy Consumption

A Recycler Kit (equipped on the cutting unit) may increase energy use. To extend operating time, do at least one of the following options:

- Remove the existing recycler blades and install low-sail blades; refer to the blade removal and installation procedure in your cutting unit *Operator's Manual*.
- Reduce the cutting-unit blade speed; refer to the blade speed instructions in the traction unit *Operator's Manual*.

Notes:



Count on it.