



# DFS Vac Collection System Weight Kit

## 500 Series Z Masters with 52in Mowers and Liquid-Cooled Z Masters with 60in Mowers

Part No. 107-1760

Part No. 107-1780

### Installation Instructions

**Note:** To comply with ANSI/OPEI B71.4-1999 Standard, top weights must be added to the following machines when a DFS Bagger is installed.

- 500 Series Z Masters with 52 inch mowers
- 500 Series Liquid Cooled Z Masters with 60 inch mowers

## Loose Parts

**Note:** Use the chart below to identify parts for assembly.

Step	Description	Qty.	Use
<b>1</b>	Top weight	2	Installing the weights on a 52 inch mower
	Bolt, 1/2 x 4 inch	2	
	U-Bolt, 3/8 X 6 inch	2	
	Single weight plate	1	
	Lock nut, 3/8 inch	4	
	Washer, 3/8 inch	4	
	Spacer	4	
<b>2</b>	Top weight	2	Installing the weights on a liquid cooled 60 inch mower
	Bolt, 1/2 x 4 inch	2	
	U-Bolt, 3/8 X 6 inch	2	
	Single weight plate	1	
	Double weight plate	2	
	Lock nut, 3/8 inch	4	
	Washer, 3/8 inch	4	

## Step

# 1

## Installing the Weights on a 52 inch Mower

### Parts needed for this step:

Qty.	Part
2	Top weight
2	Bolt, 1/2 x 4 inch
2	U-Bolt, 3/8 X 6 inch
1	Single weight plate
4	Lock nut, 3/8 inch
4	Washer, 3/8 inch
4	Spacer

### Procedure

**Note:** Remove or discard the bolt included with the DFS Bagger to install the top weights. This bolt is too short for installing 3 top weights.

**Note:** There are 2 top weights included with the DFS Bagger and ensure they are used on the machine.

1. Place the top weights on top of the front caster weights (Fig. 1).
2. Secure the top weights with a bolt (1/2 x 4 inch) (Fig. 1).

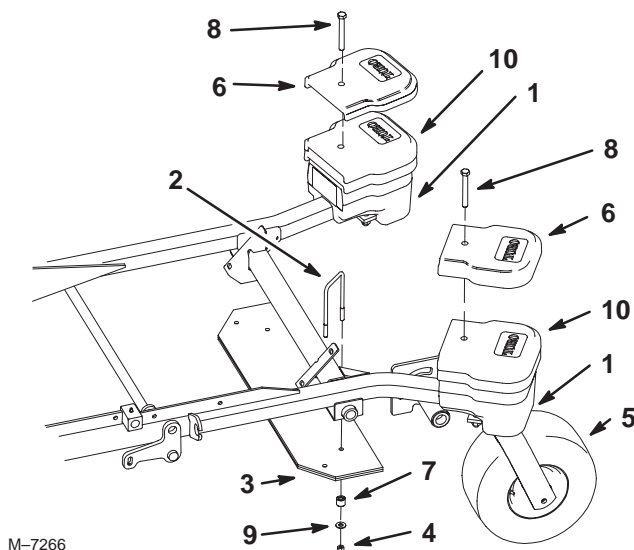
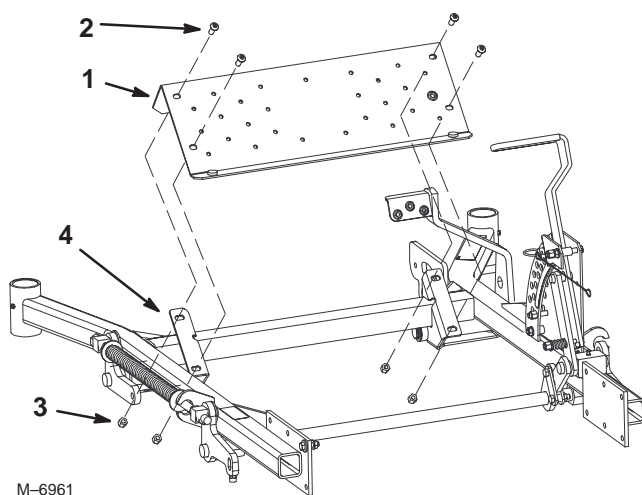


Figure 1

1. Front caster weight
2. U-bolt
3. Single weight plate
4. Lock nut, 3/8 inch
5. Front caster
6. Top weight
7. Spacer
8. Bolt, 1/2 x 4 inch
9. Washer, 3/8 inch
10. Top weights—included with DFS Bagger

3. Raise the foot pan and then remove the footrest from the machine (Fig. 2).



**Figure 2**

- |             |                  |
|-------------|------------------|
| 1. Footrest | 3. Nut           |
| 2. Bolt     | 4. Machine frame |

4. Install the single weight plate onto the machine frame with 2 U-bolts (3/8 x 6 inch), 2 spacers, 2 washers (3/8 inch), and 2 nuts (3/8 inch) (Fig. 1).
5. Install the footrest onto the machine and lower the footpan (Fig. 2).

## Step 2

### Installing the Weights on a Liquid Cooled 60 inch Mower

#### Parts needed for this step:

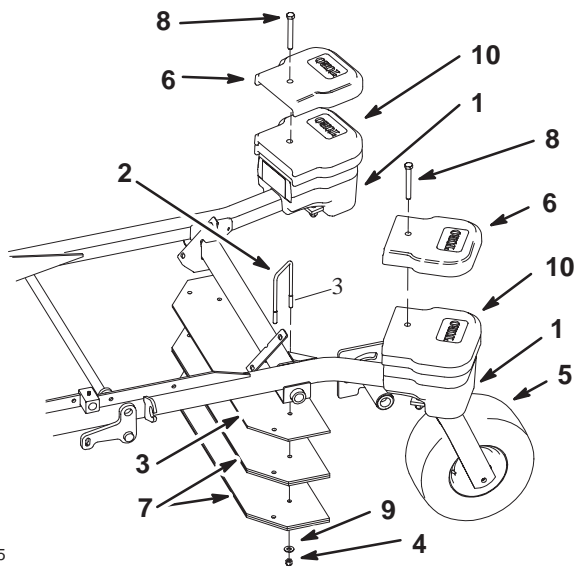
Qty.	Part
2	Top weight
2	Bolt, 1/2 x 4 inch
2	U-Bolt, 3/8 X 6 inch
1	Single weight plate
2	Double weight plate
4	Lock nut, 3/8 inch
4	Washer, 3/8 inch

#### Procedure

**Note:** Remove or discard the bolt included with the DFS Bagger to install the top weights. This bolt is too short for installing 3 top weights.

**Note:** There are 2 top weights included with the DFS Bagger and ensure they are used on the machine.

1. Place the top weights on top of the front caster weights (Fig. 3).
2. Secure the top weights with a bolt (1/2 x 4 inch) (Fig. 3).

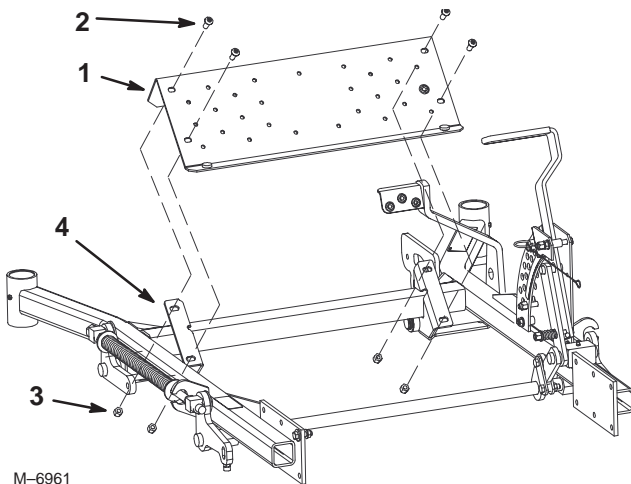


M-7265

**Figure 3**

- |                        |                                          |
|------------------------|------------------------------------------|
| 1. Front caster weight | 7. Double weight plate                   |
| 2. U-bolt              | 8. Bolt, 1/2 x 4 inch                    |
| 3. Single weight plate | 9. Washer, 3/8 inch                      |
| 4. Lock nut, 3/8 inch  | 10. Top weights—included with DFS Bagger |
| 5. Front caster        |                                          |
| 6. Top weight          |                                          |

3. Raise the foot pan and then remove the footrest from the machine (Fig. 4).



M-6961

**Figure 4**

- |             |                  |
|-------------|------------------|
| 1. Footrest | 3. Nut           |
| 2. Bolt     | 4. Machine frame |

4. Install the single and 2 double weight plates onto the machine frame with 2 U-bolts (3/8 x 6 inch), 2 washers (3/8 inch), and 2 nuts (3/8 inch) (Fig. 3).
5. Install the footrest onto the machine and lower the footpan (Fig. 4).