



Count on it.

Parts Catalog

**18-inch 11-Blade EdgeSeries™
Forward Swept Reel DPA Cutting
Unit**

Reelmaster® 3550 Traction Unit

Model No. 03486—Serial No. 42000000 and Up



Ordering Replacement Parts

To order replacement parts, please supply the part number, the quantity, and the description of each part desired.

Understanding Reference Numbers

Each identified part in an illustration has a reference number. The reference number for a part also appears in the parts list, along with other information about the part.

This catalog uses two special reference number formats, one to indicate parts in a service assembly and another to indicate the quantity of a given part in an illustration.

Service Assembly Reference Numbers

Parts in service assemblies have reference numbers in the form a:b. The a represents the reference number of the entire service assembly and the b represents a sequential number unique to each part within the service assembly.

For example, a wheel assembly might be identified by reference number 6, the tire by 6:1, the valve by 6:2, and the wheel by 6:3. When you order the assembly identified by reference number 6, you receive all parts identified by reference numbers 6:1, 6:2, and 6:3. However, you may also order any part individually. Reference numbers of this type appear in illustration and in parts lists.

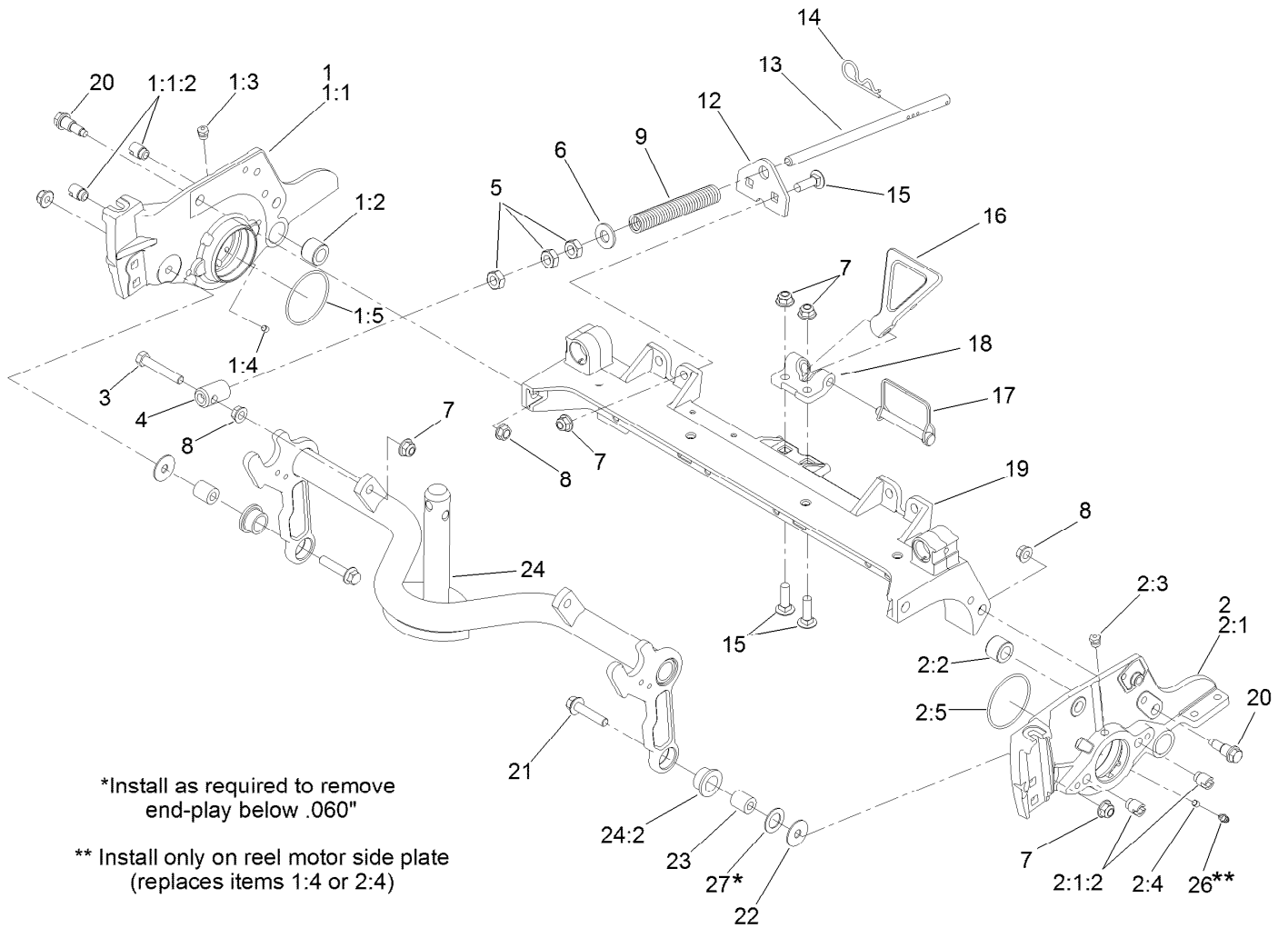
Reference Numbers Indicating Quantity

In an illustration, if a reference number indicates more than one part, the reference number has the form nX y. The n represents the quantity of the part, the X is the multiplication symbol, and the y represents the reference number.

For example, in an illustration, the reference number 2X 37 means that two of the parts identified by reference number 37 are indicated.

Contents

Frame Assembly.....	4
Reel and Bedbar Assembly	6
5in EdgeSeries+ 18in Fairway, 11 Blade, Low Drag, Forward Swept Reel Assembly No. 137-8407	8
Optional Heavy-Duty MVP Kit No. 120-7230.....	9
Roller Assembly	10
Optional Long Roller Assembly No. 137-6101.....	11
Rear-Short Roller Assembly No. 137-6103	12
Plastic Wiehle Roller Assembly No. 112-1704.....	13
Optional Plastic Shoulder Roller Assembly No. 112-1733	14
Optional Front-Full Roller Assembly No. 137-6116.....	15
Optional High Height-of-Cut Assembly No. 137-0890	16
Shield Assembly.....	17
Optional Tool Assembly.....	18
Attachments and Accessories	19



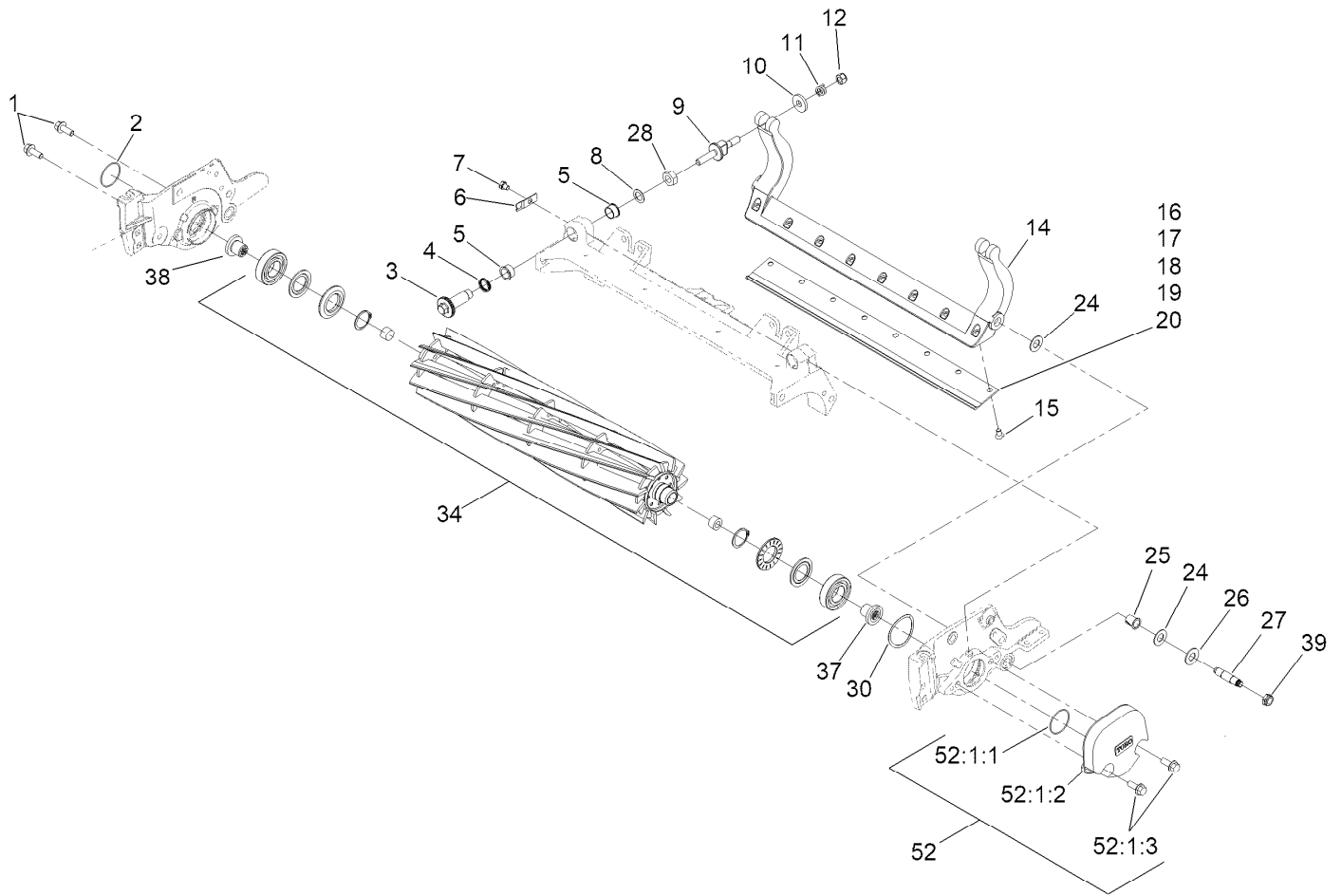
Frame Assembly (continued)

Ref.	Part Number	Qty.	Description
24:2	93-2877	2	Bushing

Ref.	Part Number	Qty.	Description
26	302-5	1	Fitting-Grease
27	67-9410	1	Washer

● Not illustrated
▲ Not serviced separately

■ Optional Equipment

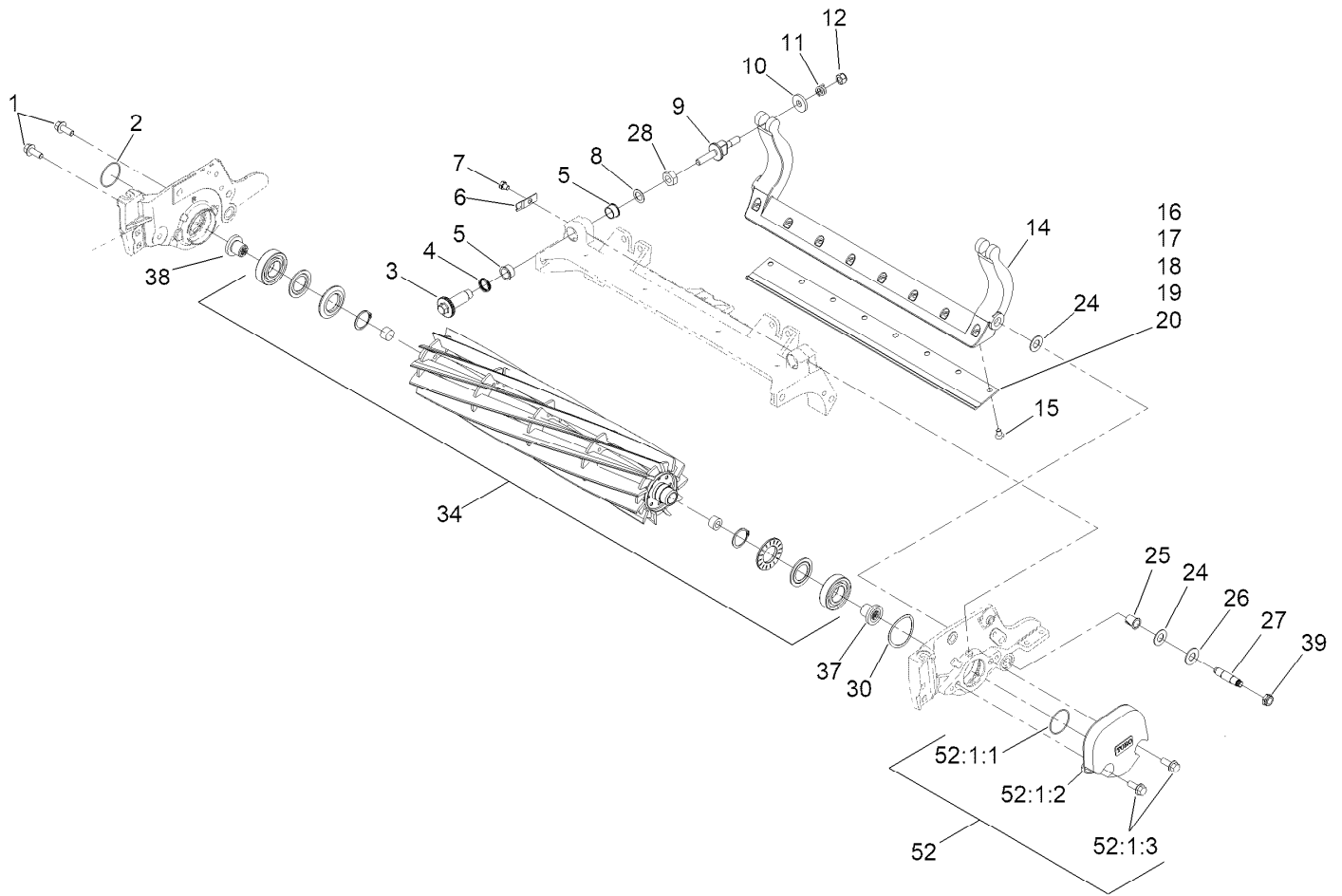


Reel and Bedbar Assembly

Ref.	Part Number	Qty.	Description	Ref.	Part Number	Qty.	Description
1	3234-11	2	Screw-HHF	17	137-6091	1	Bedknife-Edgemax (Rm 18In) ■●
2	237-68	1	O-Ring	18	147-1241	1	Bedknife-STD (Rm 18In) ●■
3	120-5118	2	Shaft-Adjuster	19	137-6090	1	Bedknife-Edgemax Lowcut (Rm 18In)
4	120-5116	2	Washer-Wave	20	147-1240	1	Bedknife-Rm 18In Lowcut ●■
5	106-5344	4	Bushing-Flange, Keyed	24	61-1950	4	Washer-Plastic
6	99-2097	2	Detent	25	56-9520	2	Bushing-Flanged
7	119-4067	2	Screw-HH	26	69-8980	2	Washer
8	108-0015	2	Washer-Flat	27	120-9941	2	Bolt-Bedbar
9	137-6130	2	Screw-Adjuster, Bedbar	28	3296-33	2	Nut-Lock, NI
10	119-4155	2	Washer-Hardened	30	115-5258	1	Spring-Wire, Flat
11	120-5120	2	Spring-Compression	34	137-8407	1	ES Reel+,5In Fwy(18)11 Bld LD(Fsr)
12	119-4039	2	Nut-Hex	37	130-0064	1	Insert-Threaded, 5 Inch (LH)
14	112-1718-01	1	Bedbar	38	130-0063	1	Insert-Threaded, 5 Inch (RH)
14	131-3222-0P	1	Bedbar-Agressive, 18In ■				
15	119-4151	6	Screw-Bedknife				
16	147-1256	1	Bedknife-Tournament (Rm 18In) ●■				

● Not illustrated

■ Optional Equipment

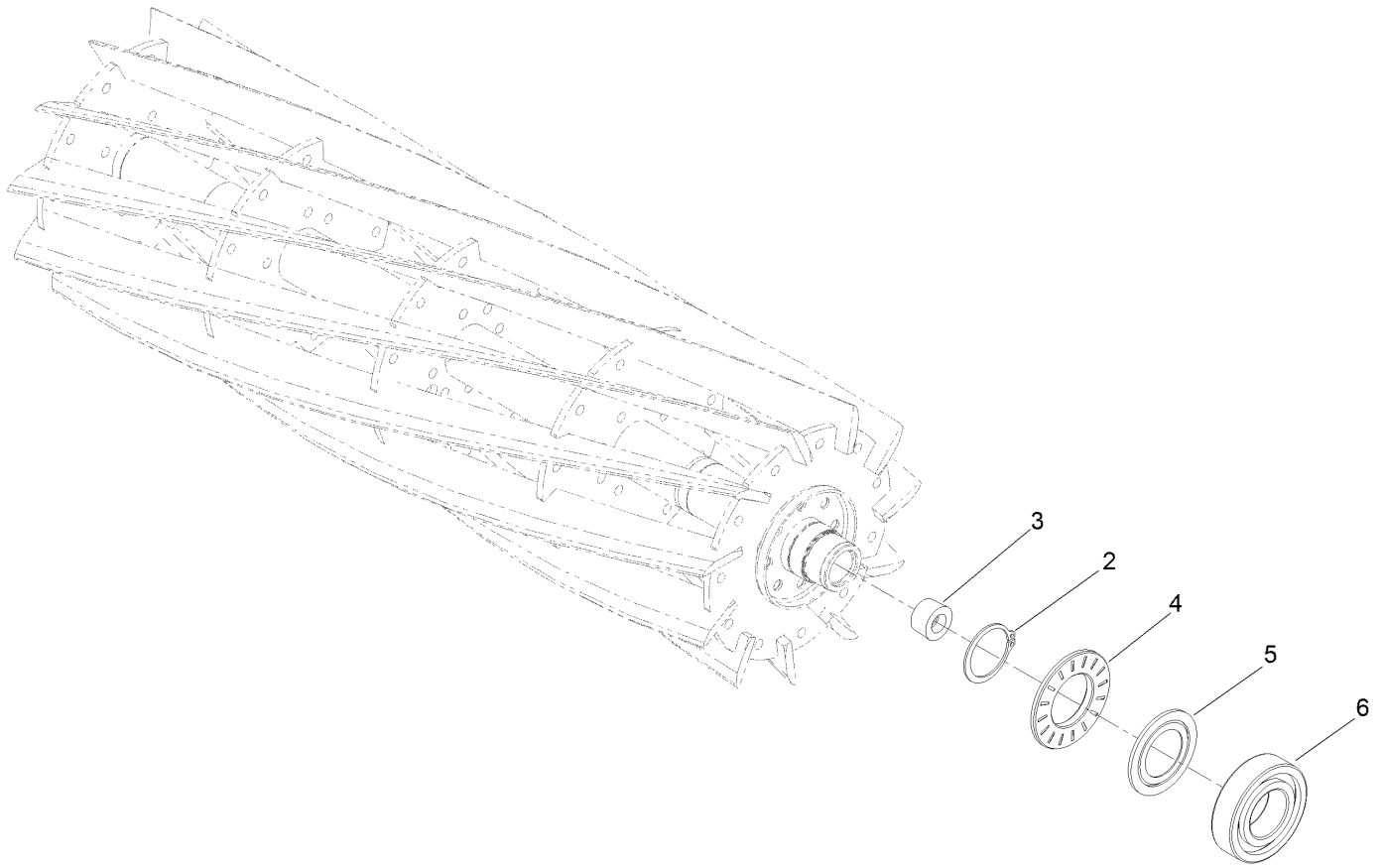


Reel and Bedbar Assembly (continued)

<i>Ref.</i>	<i>Part Number</i>	<i>Qty.</i>	<i>Description</i>	<i>Ref.</i>	<i>Part Number</i>	<i>Qty.</i>	<i>Description</i>
39	3296-28	2	Nut-Lock, NI	52:1:1	237-68	5	O-Ring
45	120-7230	1	Rm HD DPA MVP Kit ●■	52:1:2	125-2779-01	5	Weight-End, 5 Inch
52	03484	1	5 Inch Weight-Cu (W/O Attach) ■	52:1:3	3234-11	10	Screw-HHF

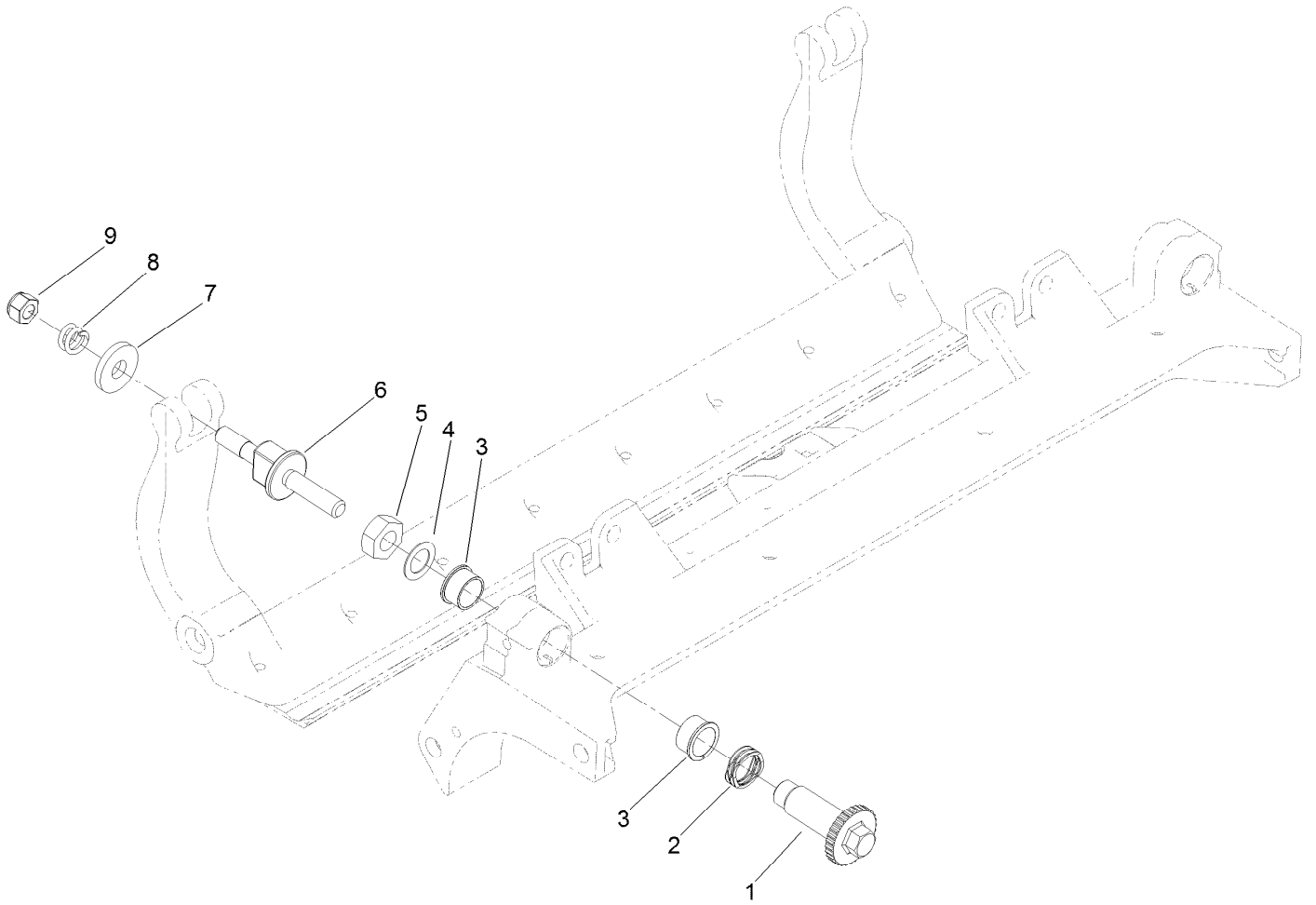
● Not illustrated

■ Optional Equipment



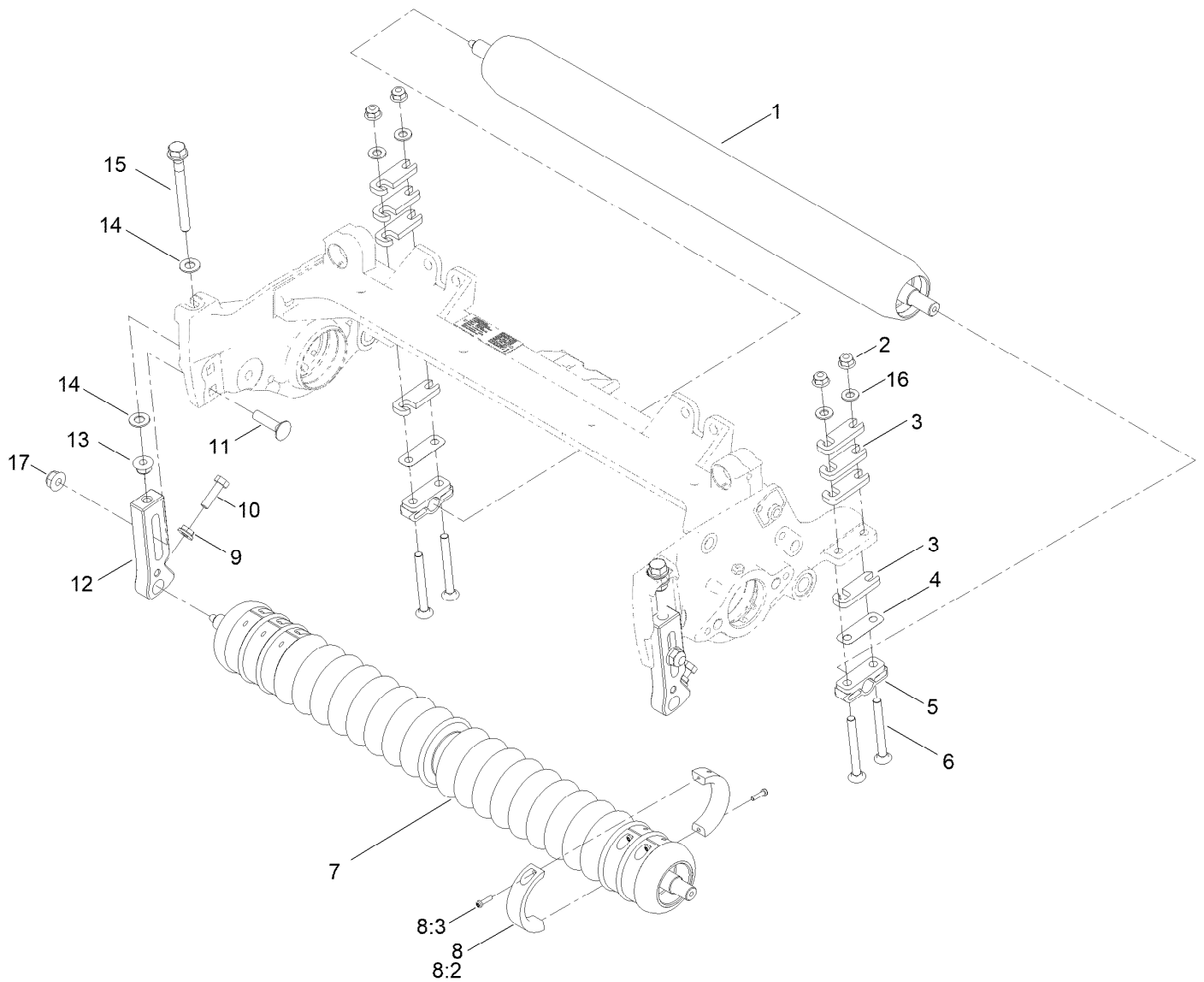
5in EdgeSeries+ 18in Fairway, 11 Blade, Low Drag, Forward Swept Reel Assembly No. 137-8407

<i>Ref.</i>	<i>Part Number</i>	<i>Qty.</i>	<i>Description</i>
2	92-2601	2	Ring-Retaining
3	127-7118	2	Plug-Shaft, Reel
4	127-4284	2	Washer-Special
5	115-3299	2	Seal-Flocked
6	140-5510	2	Bearing-Sealed, Stainless



Optional Heavy-Duty MVP Kit No. 120-7230

<i>Ref.</i>	<i>Part Number</i>	<i>Qty.</i>	<i>Description</i>
1	120-5118	2	Shaft-Adjuster
2	120-5116	2	Washer-Wave
3	106-5344	4	Bushing-Flange, Keyed
4	108-0015	2	Washer-Flat
5	3296-33	2	Nut-Lock, NI
6	137-6130	2	Screw-Adjuster, Bedbar
7	119-4155	2	Washer-Hardened
8	120-5120	2	Spring-Compression
9	119-4039	2	Nut-Hex

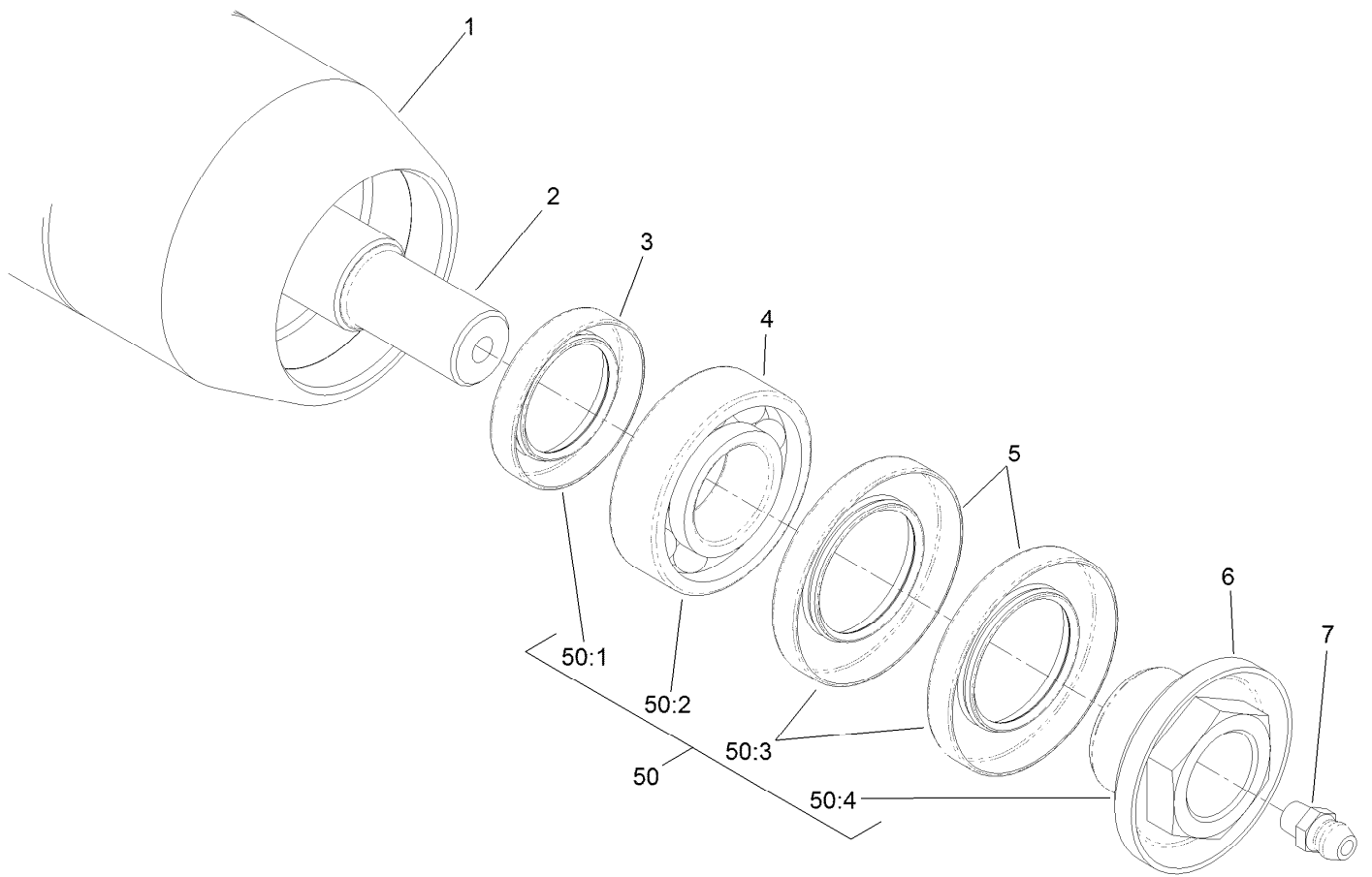


Roller Assembly

Ref.	Part Number	Qty.	Description	Ref.	Part Number	Qty.	Description
1	137-6101	1	Long Rear Roller ASM (2.5In DIA)(18In) ●■	8	104-8215	6	Collar Kit ■
1	137-6103	1	Short Rear Roller ASM (2.5In DIA)(18In)	8:2	100-4959	2	Collar
2	119-4041	4	Nut-HF	8:3	104-1835	2	Screw
3	119-0626	4	Shim-Roller	9	32128-20	2	Nut-HF
4	140-5530	2	Shim-Roller (.01") ■	10	322-16	2	Screw-HH
5	106-3924	2	Bracket-Roller, Rear	11	3231-4	2	Screw-CARR
6	3230-7	4	Bolt-CARR	12	140-5690	2	Bracket-Rm Front HOC
7	112-1704	1	Plastic Wiehle Roller ASM	13	119-4042	2	Nut-HF, NI
7	112-1733	1	Plastic Shoulder Roller ASM (18In) ●■	14	48-9220	4	Washer-Flat
7	137-6116	1	Full Front Roller ASM (3In DIA)(18In) ●■	15	140-5522	2	Screw-HHF 5/8, Patch
				16	94-6936	4	Washer-Hard
				17	133-7570	2	Nut-Flange, NI
				50	137-0890	1	Rm DPA High HOC Kit (F18 & Up) ●■

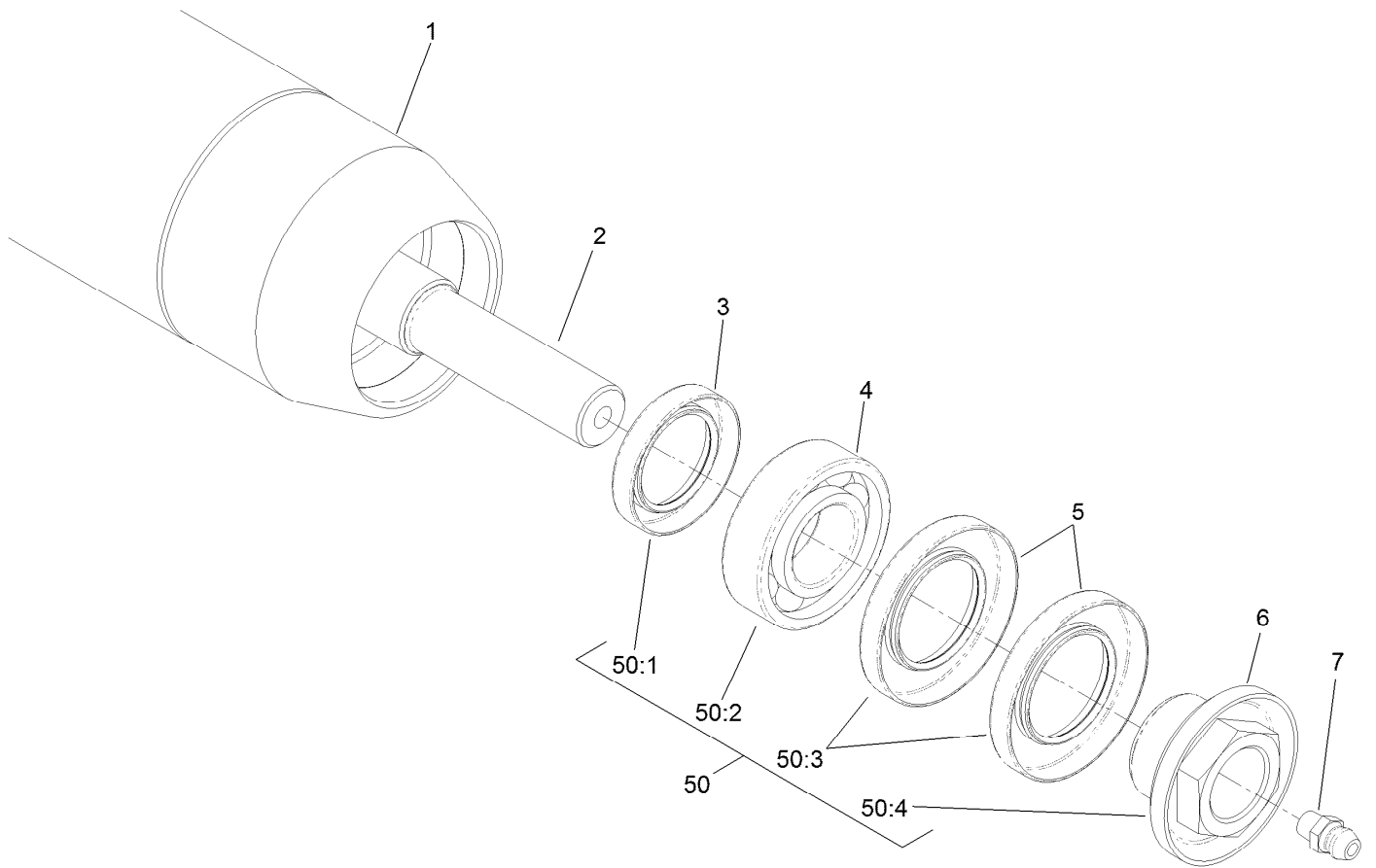
● Not illustrated

■ Optional Equipment



Optional Long Roller Assembly No. 137-6101

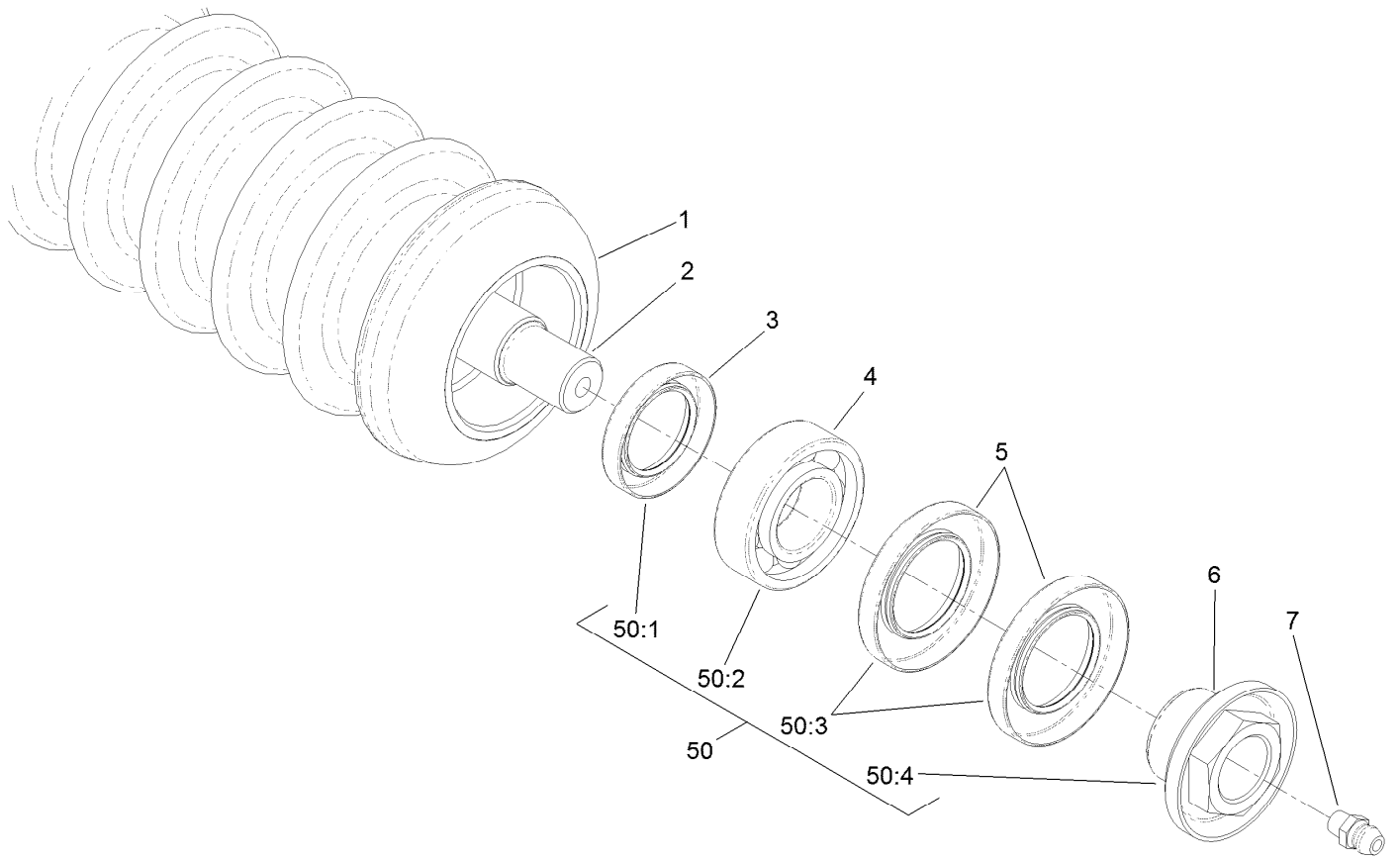
<i>Ref.</i>	<i>Part Number</i>	<i>Qty.</i>	<i>Description</i>
1	137-6100	1	Tube Roller 2.5In DIA X 19In
2	112-1731	1	Shaft-Rear Roller, Long
3	114-3717	2	Seal-Oil
4	112-5290	2	Bearing-Steel, Stainless
5	112-7494	4	Seal
6	147-0701	2	Nut-Lock, Bearing
7	302-5	2	Fitting-Grease
50	114-5430	2	Roller Rebuild Kit
50:1	114-3717	2	Seal-Oil
50:2	112-5290	2	Bearing-Steel, Stainless
50:3	112-7494	4	Seal
50:4	147-0701	2	Nut-Lock, Bearing



Rear-Short Roller Assembly No. 137-6103

<i>Ref.</i>	<i>Part Number</i>	<i>Qty.</i>	<i>Description</i>
1	137-6102	1	Tube Roller 2.5In DIA X 17In
2	112-1711	1	Shaft-Rear Roller, Short
3	114-3717	2	Seal-Oil
4	112-5290	2	Bearing-Steel, Stainless
5	112-7494	4	Seal
6	147-0701	2	Nut-Lock, Bearing
7	302-5	2	Fitting-Grease
50	114-5430	2	Roller Rebuild Kit ●
50:1	114-3717	2	Seal-Oil
50:2	112-5290	2	Bearing-Steel, Stainless
50:3	112-7494	4	Seal
50:4	147-0701	2	Nut-Lock, Bearing

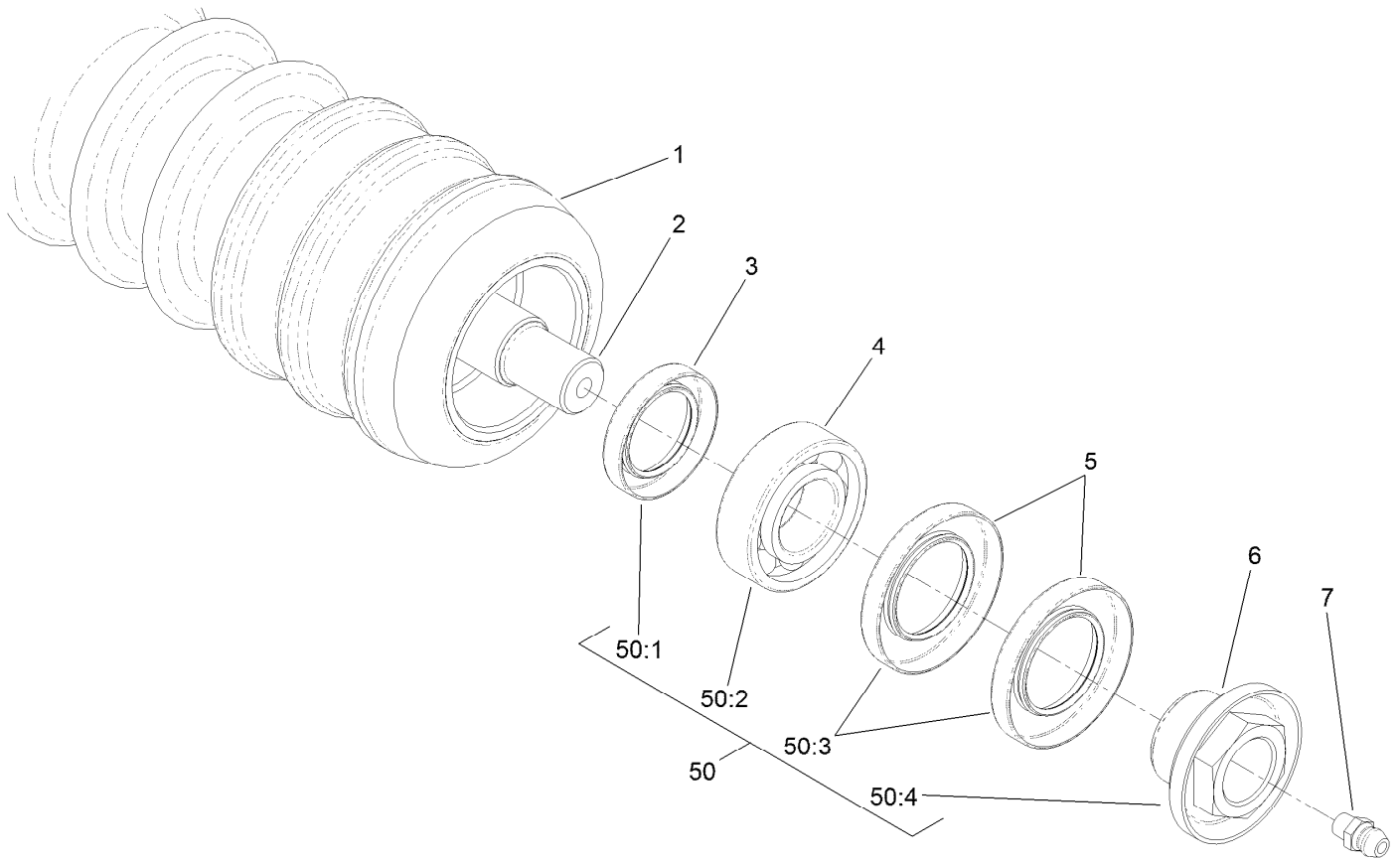
● Optional Equipment



Plastic Wiehle Roller Assembly No. 112-1704

<i>Ref.</i>	<i>Part Number</i>	<i>Qty.</i>	<i>Description</i>
1	112-1705	1	Roller-Wiehle, Plastic
2	112-1707	1	Shaft-Roller, Wiehle
3	114-3717	2	Seal-Oil
4	112-5290	2	Bearing-Steel, Stainless
5	112-7494	4	Seal
6	147-0701	2	Nut-Lock, Bearing
6	147-0700	2	Nut-Bearing Lock
7	302-5	2	Fitting-Grease
50	114-5430	2	Roller Rebuild Kit ●
50:1	114-3717	2	Seal-Oil
50:2	112-5290	2	Bearing-Steel, Stainless
50:3	112-7494	4	Seal
50:4	147-0701	2	Nut-Lock, Bearing

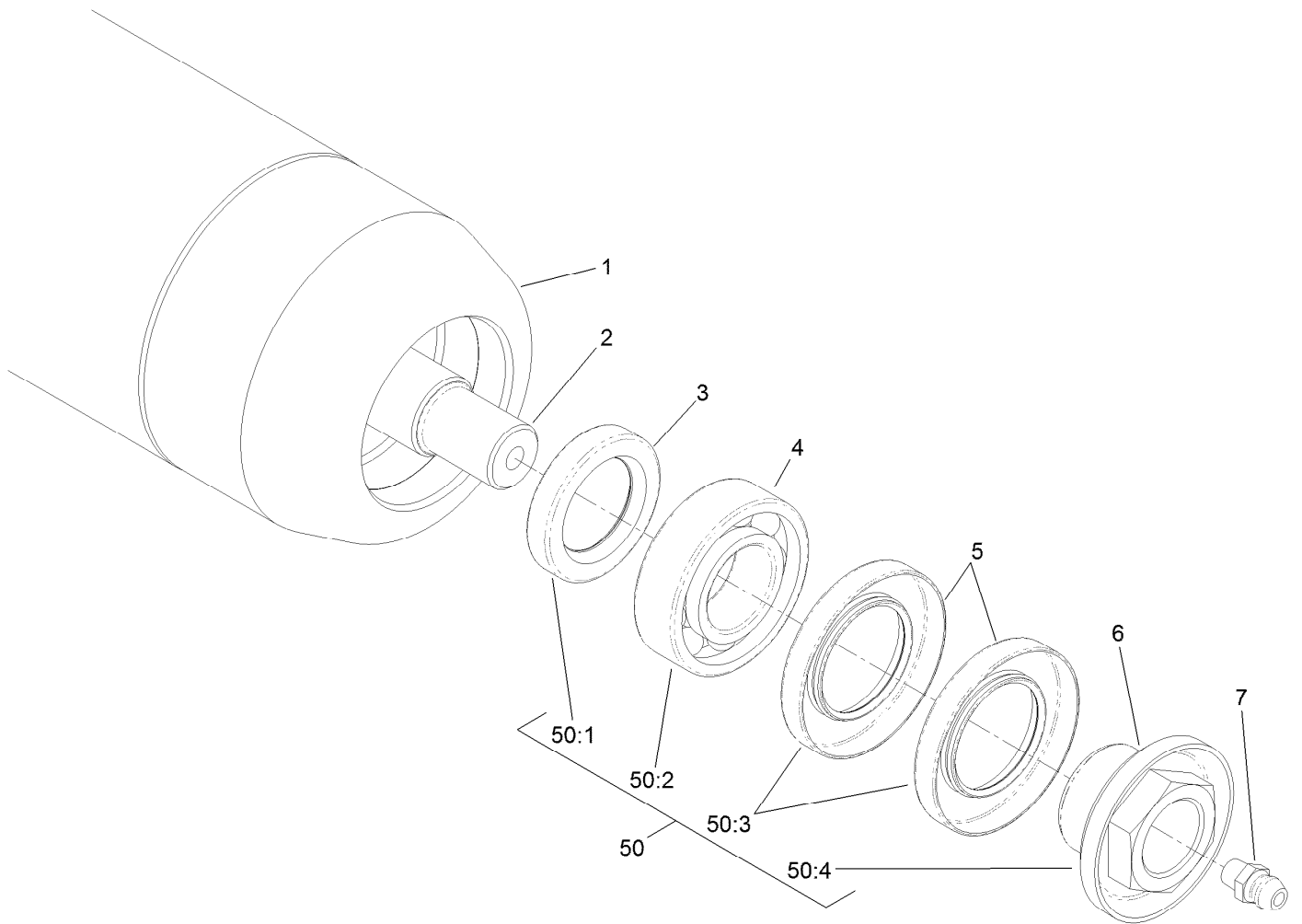
● Optional Equipment



Optional Plastic Shoulder Roller Assembly No. 112-1733

<i>Ref.</i>	<i>Part Number</i>	<i>Qty.</i>	<i>Description</i>
1	112-1734	1	Roller-Shoulder, Plastic
2	112-1707	1	Shaft-Roller, Wiehle
3	114-3717	2	Seal-Oil
4	112-5290	2	Bearing-Steel, Stainless
5	112-7494	4	Seal
6	147-0701	2	Nut-Lock, Bearing
7	302-5	2	Fitting-Grease
50	114-5430	2	Roller Rebuild Kit ●
50:1	114-3717	2	Seal-Oil
50:2	112-5290	2	Bearing-Steel, Stainless
50:3	112-7494	4	Seal
50:4	147-0701	2	Nut-Lock, Bearing

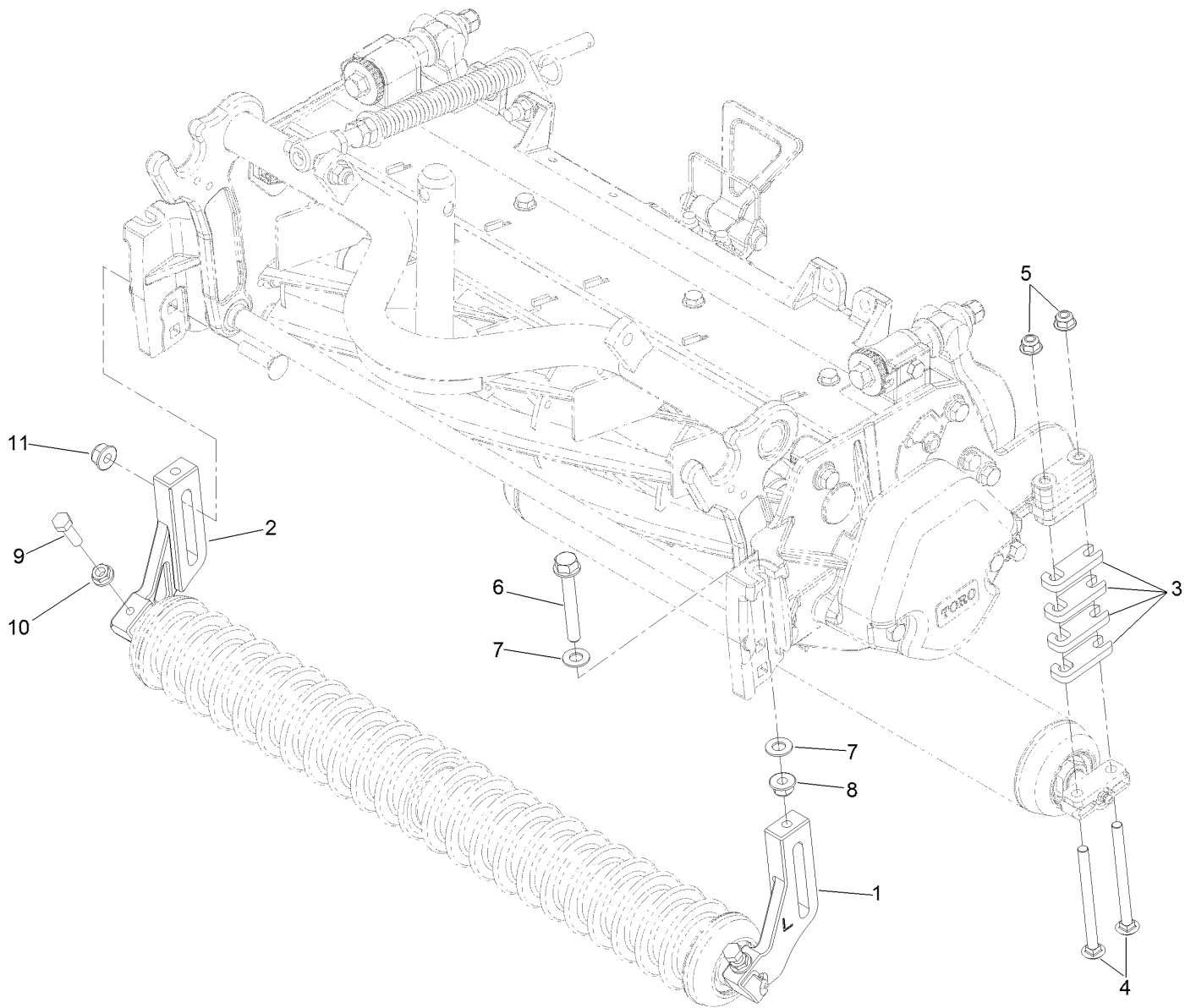
● Optional Equipment



Optional Front-Full Roller Assembly No. 137-6116

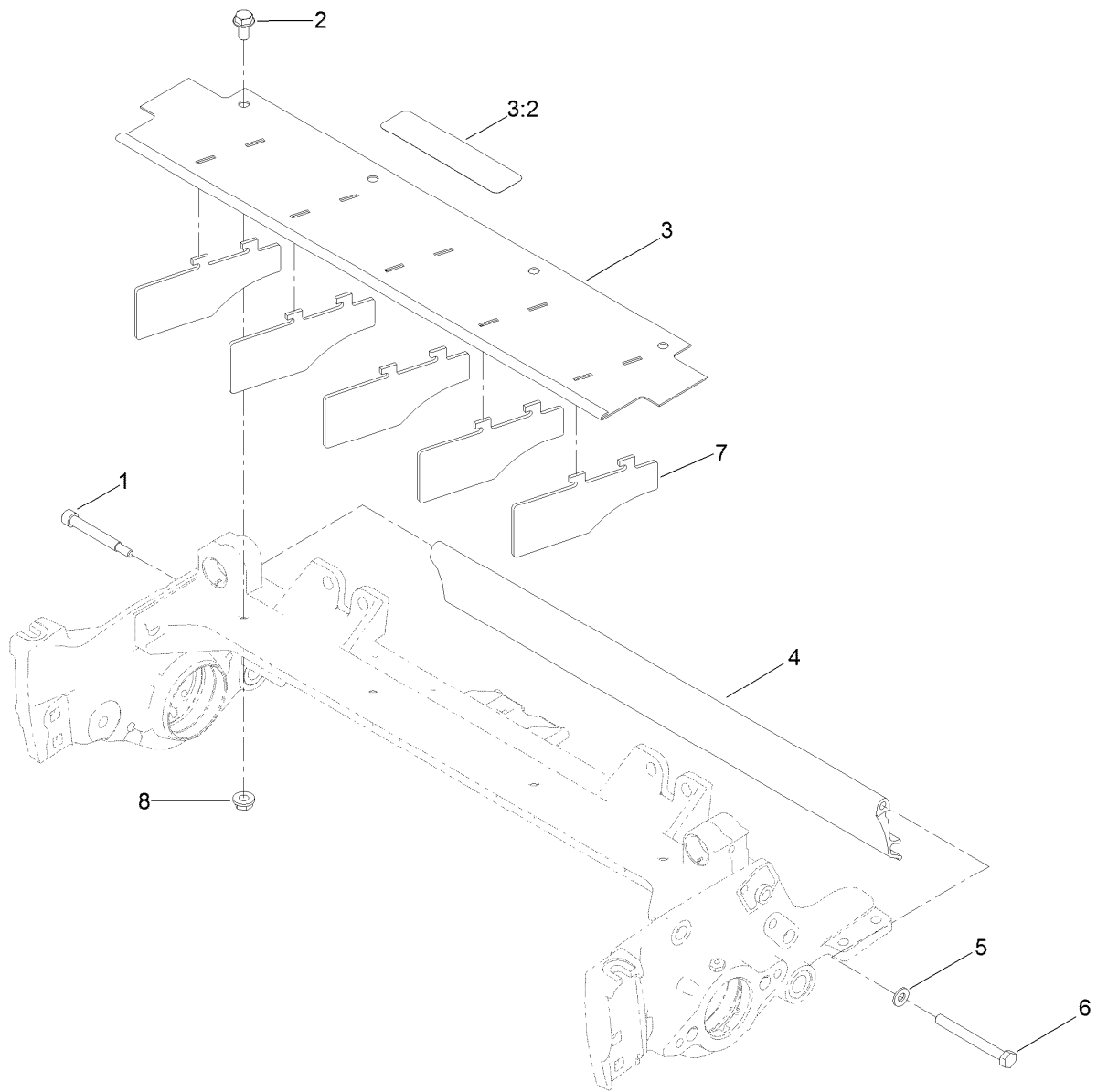
<i>Ref.</i>	<i>Part Number</i>	<i>Qty.</i>	<i>Description</i>
1	137-6115	1	Tube Roller 3.0In DIA X 20.5In
2	112-1707	1	Shaft-Roller, Wiehle
3	114-3717	2	Seal-Oil
4	112-5290	2	Bearing-Steel, Stainless
5	112-7494	2	Seal
6	147-0701	2	Nut-Lock, Bearing
7	302-5	2	Fitting-Grease
50	114-5430	1	Roller Rebuild Kit ●
50:1	114-3717	2	Seal-Oil
50:2	112-5290	2	Bearing-Steel, Stainless
50:3	112-7494	4	Seal
50:4	147-0701	2	Nut-Lock, Bearing

● Optional Equipment



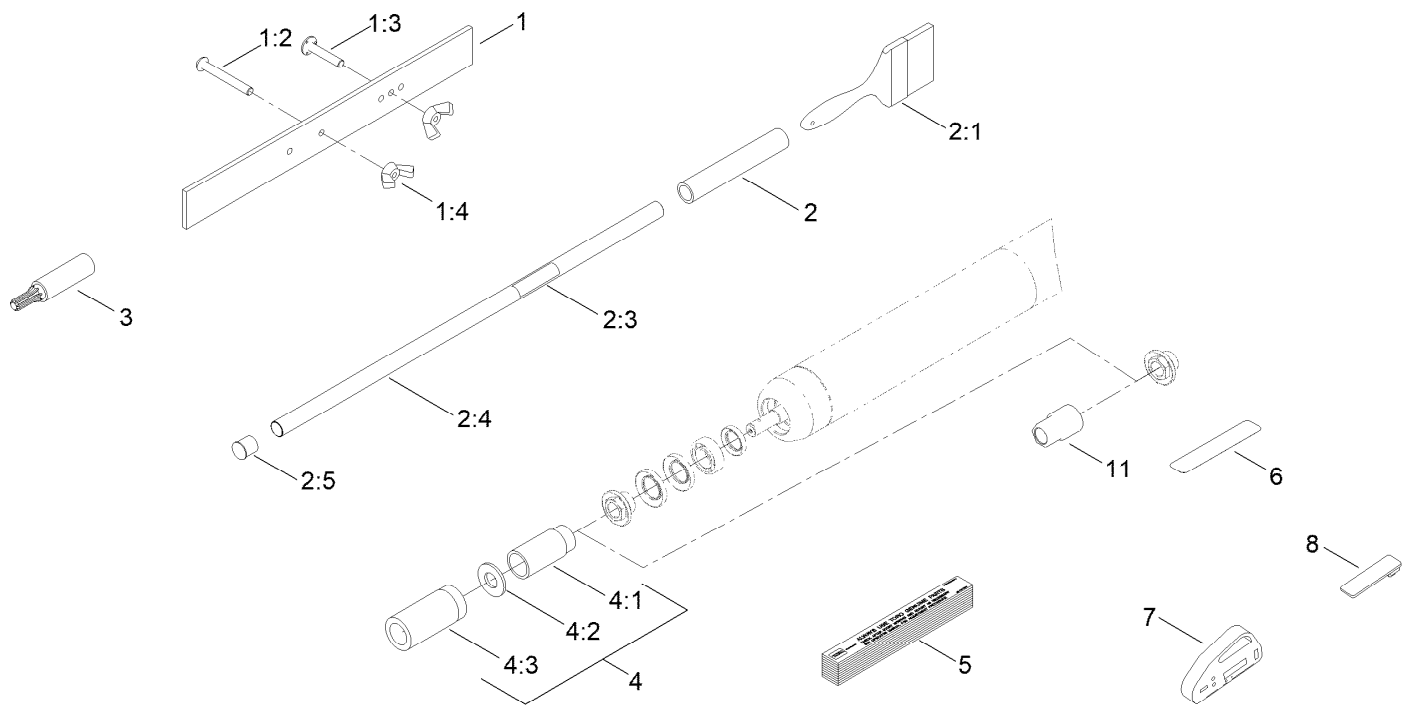
Optional High Height-of-Cut Assembly No. 137-0890

<i>Ref.</i>	<i>Part Number</i>	<i>Qty.</i>	<i>Description</i>
1	120-0404	1	Bracket-High HOC (LH)
2	120-0405	1	Bracket-High HOC (RH)
3	119-0626	8	Shim-Roller
4	3230-30	4	Screw-CARR
4	106-9758	4	Screw-CARR
5	119-4041	4	Nut-HF
6	140-5523	2	Screw-HHF 5/8, Patch
7	48-9220	4	Washer-Flat
8	119-4042	4	Nut-HF, NI
9	322-16	2	Screw-HH
10	32128-20	2	Nut-HF
11	133-7570	2	Nut-Flange, NI



Shield Assembly

<i>Ref.</i>	<i>Part Number</i>	<i>Qty.</i>	<i>Description</i>
1	107-7773	1	Screw-HSH
2	3234-7	3	Screw-HHF
3	112-1738	1	Front Glass Shield ASM
3:2	137-9706	1	Decal-Warning
4	125-2099	1	Shield-Glass, Rear
5	3256-74	1	Washer-Flat
6	322-14	1	Screw-HH
7	110-1706	4	Deflector
8	32128-20	3	Nut-HF



Optional Tool Assembly

Ref.	Part Number	Qty.	Description
1	108-6715	1	Gauge Bar ASM
1:2	32122-54	1	Screw-Head, Truss
1:3	108-6714	1	Stud-Weld
1:4	32103-3	2	Nut-Wing
2	29-9100	1	Brush And Handle ASM
2:1	36-4310	1	Brush
2:3	98-3206	1	Decal
2:4	29-9080	1	Handle
2:5	2410-18	1	Cap-Plastic
3	TOR4112	1	Adapter-Drive, Reel ■
4	115-0803	1	Rm/Gm Roller Rebuild Tool Kit

Ref.	Part Number	Qty.	Description
4:1	115-0852	1	Tool-Inner Seal
4:2	107-8133	1	Washer-Flat
4:3	115-0853	1	Tool-Bearing/Outer Seal
5	125-5610	1	Paper-Reel, Toro (10 Pack)
6	140-5531	1	Shim-Toro Reel (.002In)
7	131-6828	1	Indicator-Angle
8	131-6829	1	Mount-Indicator, Angle
9	137-0924	1	Tool-Hand TAP 7/8-16 (Rm DPA Reel) ●
10	137-0925	1	Tool-Hand TAP 7/8-16, LH (Rm DPA Reel) ●
11	147-1132	1	Tool-Drive, Roller Nut

● Not illustrated

■ Obtain directly from K-Line Industries, Inc. (<https://klineind.com>)

Attachments and Accessories

For 03486 — 18-inch 11-Blade EdgeSeries Forward Swept Reel DPA Cutting Unit Reelmaster 3550 Traction Unit

Product Name	Model/Part
Rear Roller Brush (only) Kit	03916
Weight Kit for 8-Blade or 11-Blade DPA Cutting Unit with 5 Inch Reel.....	03484
Flexible Grass Basket Kit.....	03923
Extended Flexible Grass Basket Kit.....	03924
Groomer Rod Kit (18 Inch).....	131-6823
Groomer Rod Kit (18 Inch Full Front Roller).....	137-0900
Long Rear Roller Asm (2.5in Dia)(18in)	137-6101
18 Inch Rear Roller Scraper Kit	120-9986
Wiehle Roller Scraper (18 Inch).....	121-3182-03
Comb/Scraper Kit	121-6995
Full Front Roller Asm (3in Dia)(18in).....	137-6116
Scraper-Front Full Roller (18 Inch).....	121-6996-03
Plastic Shoulder Roller Asm	112-1733
Scraper-Shoulder Roller (18 Inch)	121-6970-03
Brush-Roller (High HOC) (18 Inch)	121-3199
Brush-roller, Rear (hd)	137-0843
High Height-of-Cut Kit, Reelmaster 3000 or 5000 Series DPA Cutting Unit	137-0890
3in Dia Collar Kit	104-8215
Cutting Unit Kickstand	119-8010-03
Reel Drive Adapter (Obtain directly from K-Line Industries, Inc. (800) 241-0936)	TOR4112
Roller Rebuild Tool Kit.....	115-0803
Gauge Bar Assembly	108-6715
Roller Rebuild Kit	114-5430
Groomer/RRB Seal Kit.....	131-3233
Heavy-Duty DPA MVP Kit.....	120-7230
Rear Roller Adjustment Kit.....	125-0570
Bedbar-Agressive, 18in	131-3222-0P
Bedknife-Tournament (RM18 in).....	147-1256
Bedknife-EDGEMAX	137-6091
Bedknife-STD (RM 18in).....	147-1241
Bedknife-EDGEMAX Lowcut (RM 18in).....	137-6090
Bedknife-Lowcut (RM 18in)	147-1240
Angle Indicator.....	131-6828
Angle Indicator Mount.....	131-6829
5in EdgeSeries+ 18in Fairway, 11 Blade, Low Drag, Froward Swept Reel	137-8407
5 Inch Universal/bi-directional Groomer.....	03763
Universal Groomer Cartridge, Reelmaster 3550 Series 18-inch Edge Series Cutting Units with Universal Groomer	03771
Grooming Brush (18In)	03766
Broomer Kit (18In)	132-7115
Rear Roller Brush Kit (For Universal Groomer) (18In).....	03657
Weight Kit (For Universal Groomer Only and Hydraulic Reel Motors).....	03417
Universal Groomer Drive MVP Kit, Reelmaster 18-inch or 22-inch EdgeSeries Cutting Units with 5-inch Reel	140-5605
Rear Roller Brush (Universal) MVP Kit	133-0152

Attachments and Accessories (continued)

Rear Roller Brush MVP Kit	133-0155
Toro Reel Paper (10 Pack).....	125-5610
Shim-TORO Reel (.002in)	140-5531
Tool-Hand Tap 7/8-16 (RM DPA Reel)	137-0924
Tool-Hand Tap 7/8-16, LH (RM DPA Reel)	137-0925

Notes:

Notes:

Notes:



Count on it.