



## 44in, 48in and 52in Twin Soft Bagger Z100 and Z400 Z Master®

Model No. 78507 - 250000001 and up.

### Parts Catalog

---

#### Ordering Replacement Parts

To order replacement parts, please supply the part number, the quantity, and the description of each part desired.

#### Understanding Reference Numbers

Each Identified part in an illustration has a reference number. The reference number for a part also appears in the parts list, along with other information about the part.

This catalog uses two special reference number formats, one to indicate parts in a service assembly and another to indicate the quantity of a given part in an illustration.

#### Service Assembly Reference Numbers

Parts in service assemblies have reference numbers in the form a:b. The a represents the reference number of the entire service assembly and the b represents a sequential number unique to each part within the service assembly.

For example, a wheel assembly might be identified by reference number 6, the tire by 6:1, the valve by 6:2, and the wheel by 6:3. When you order the assembly identified by reference number 6, you receive all parts identified by reference numbers 6:1, 6:2, and 6:3. However, you may also order any part individually. Reference numbers of this type appear in illustrations and in part lists.

#### Reference Numbers Indicating Quantity

In an illustration, if a reference number indicates more than one part, the reference number has the form nX y. The n represents the quantity of the part, the X is the multiplication symbol, and the y represents the reference number.

For example, in an illustration, the reference number 2X 37 means that two of the parts identified by reference number 37 are indicated.

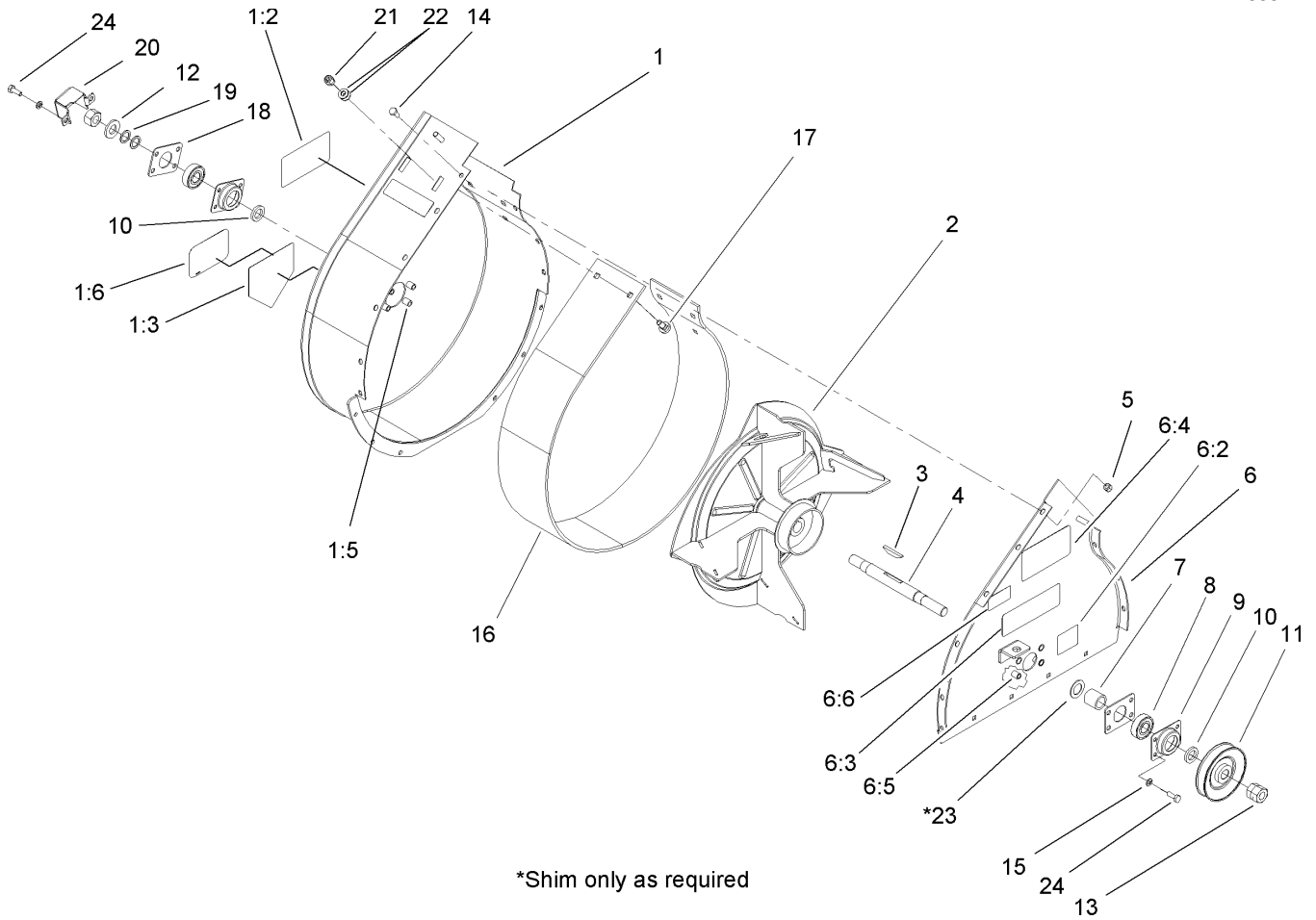
# Contents

<b>Description</b>	<b>Page</b>	<b>Description</b>	<b>Page</b>
Blower Housing Assembly	..... 3	Bag Support and Hood Assembly	..... 6
Blower and Mounting Assembly	..... 4	Bag Assembly	..... 7
Bagger Mount Assembly	..... 5		

## Part Description Abbreviations

Part descriptions in this catalog may include the following abbreviations.

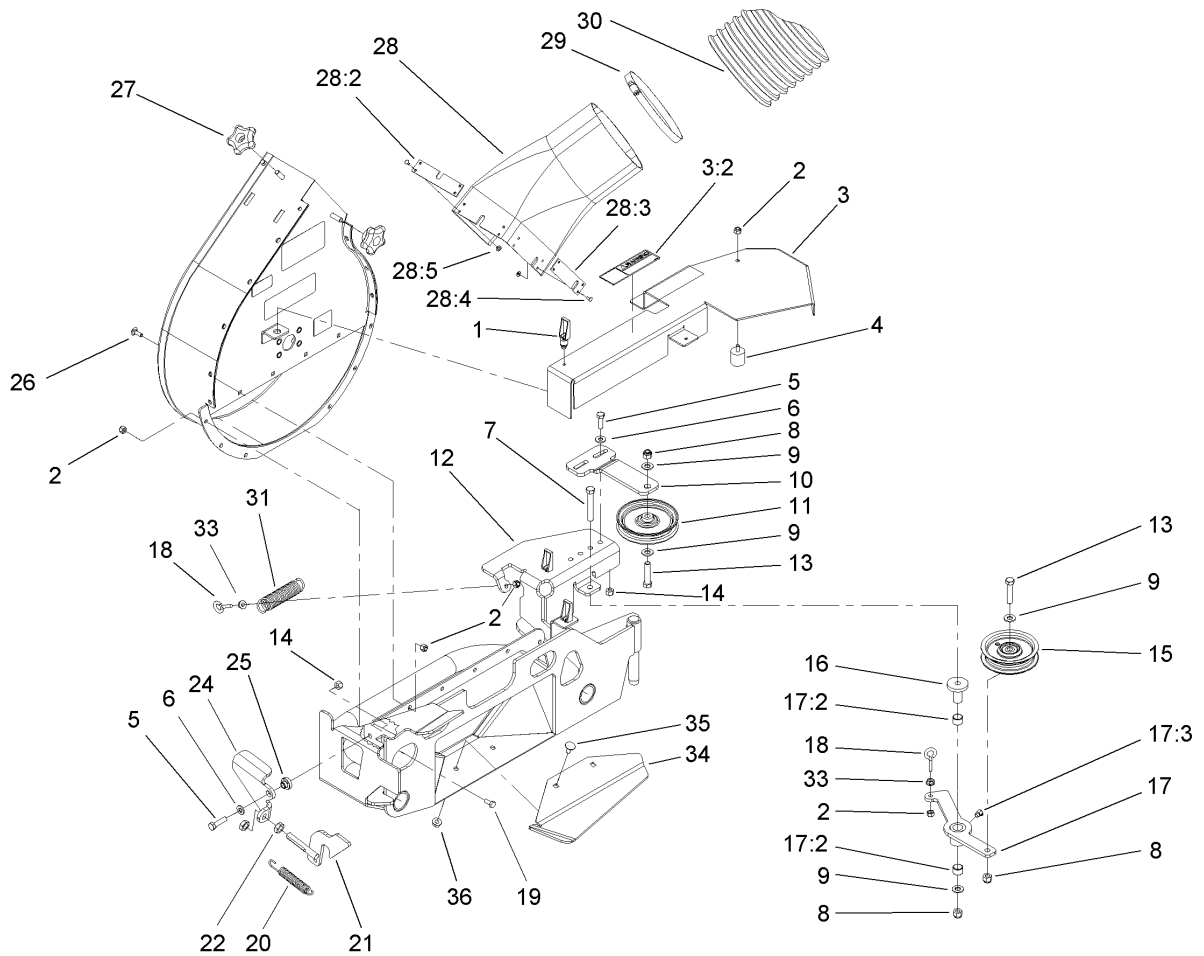
AR. .... as required	INC. .... incorporated
ASM. .... assembly	LH. .... left hand
CARR. .... carriage	NI. .... nylon insert
DEG. .... degrees	PPH. .... phillips pan head
FH. .... flat head	PTH. .... phillips truss head
GA. .... gauge	PTO. .... power take off
HF. .... hex flange	RH. .... right hand
HH. .... hex head	SFH. .... slotted fillister head
HHF. .... hex head flange	SHH. .... slotted hex head
HHFTF. .... hex head flange thread forming	SHWH. .... slotted hex washer head
HJ. .... hex jam	SPH. .... slotted pan head
HLH. .... hex lag head	SQH. .... square head
HOC. .... height-of-cut	SRH. .... slotted round head
HS. .... hex	STD. .... standard
HSBH. .... hex socket button head	TAP. .... self tapping
HSFH. .... hex socket flat head	TTH. .... torx truss head
HSH. .... hex socket head	WH. .... wing head
HWH. .... hex washer head	
HWHTF. .... hex washer head thread forming	
HYD. .... hydraulic	



## Blower Housing Assembly

Ref	Part No.	Qty.	Description
1	106-8016	1	Blower Housing ASM
1:2	79-0360	1	Decal-Danger
1:3	93-1122	1	Decal-Danger
1:5	32148-6	4	Insert-Nut
1:6	99-2385	1	Decal
2	106-8022-03	1	Impeller ASM
3	3257-40	1	Key-Hi Pro
4	105-5893	1	Shaft-Blower
5	3296-42	9	Nut-Lock, NI
6	106-8019	1	Cover Plate ASM
6:2	88-8950	1	Decal-Warning
6:3	79-0350	1	Decal-Danger
6:4	79-0360	1	Decal-Danger
6:5	32148-6	4	Insert-Nut
6:6	98-4387	1	Decal-Protection, Ear
7	106-2097	1	Spacer
8	38-7820	2	Bearing-Ball
9	37-6730	2	Cup-Bearing
10	63-9710	2	Spacer-Bearing
11	105-5992	1	Pulley ASM
12	9202604	1	Washer-Flat
13	3217-11	2	Nut-Hex
14	321-3	9	Screw-HH
15	3253-3	8	Washer-Lock

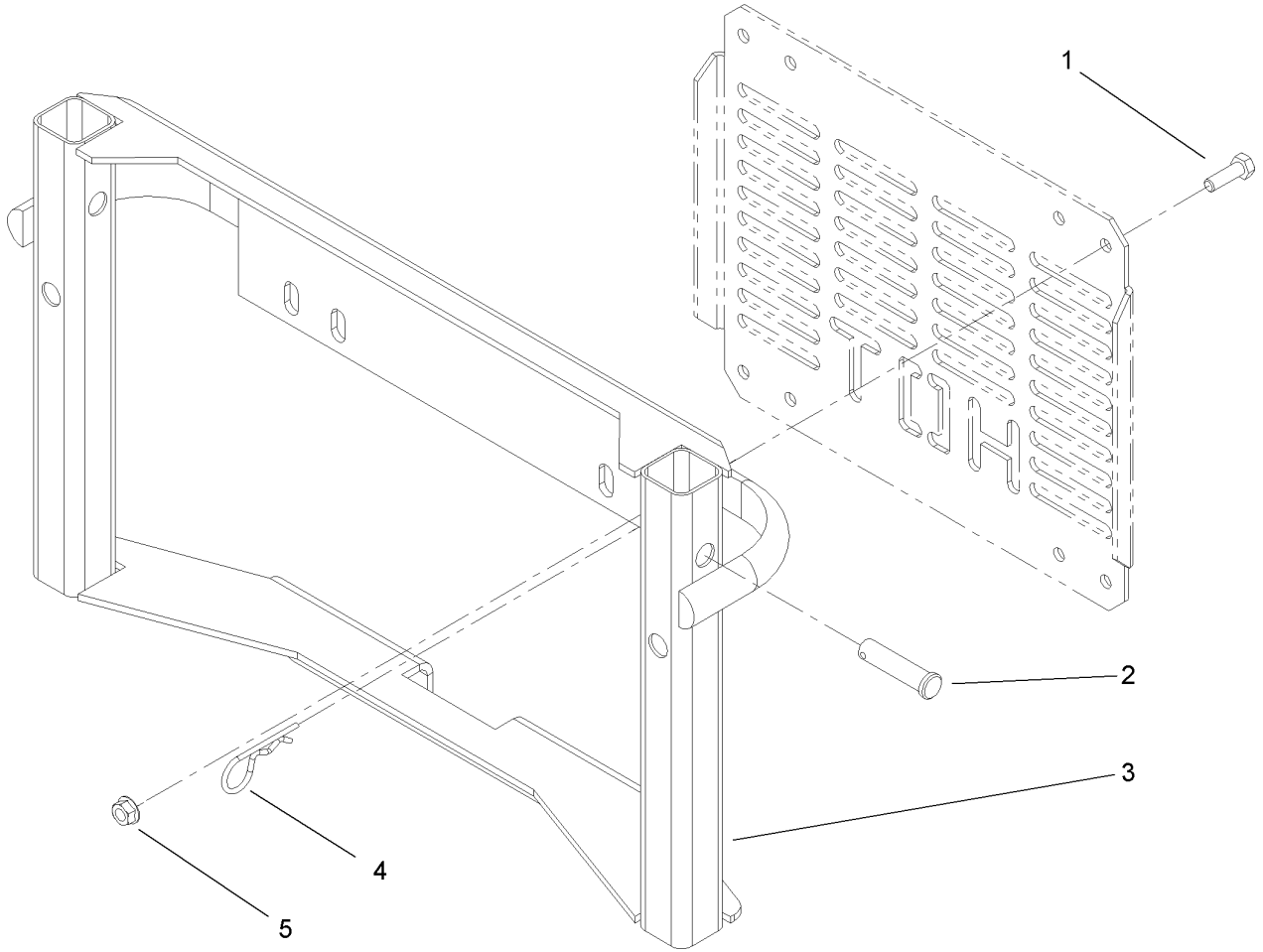
Ref	Part No.	Qty.	Description
16	106-3425	1	Strip-Wear
17	3230-1	5	Bolt-CARR
18	63-9700-03	2	Plate-Cover
19	9202154	2	Washer
20	106-3076-03	1	Cover-Shaft
21	3296-29	5	Nut-Lock, NI
22	3256-23	5	Washer-Flat
23	1535	1	Washer-Thrust
24	321-4	8	Screw-HH



## Blower and Mounting Assembly

Ref	Part No.	Qty.	Description
1	74-5950	3	Latch-Swell
2	3296-42	13	Nut-Lock, NI
3	105-5990	1	Belt Cover ASM
3:2	80-8040	1	Decal-Warning
4	106-5891	1	Bumper
5	322-6	3	Screw-HH
6	3256-23	3	Washer-Flat
7	323-12	1	Screw-HH
8	3296-39	3	Nut-Lock, NI
9	3256-24	4	Washer-Flat
10	105-5986-03	1	Bracket-Idler
11	92-7099	1	Pulley-Idler
12	106-8014-03	1	Transition ASM
13	323-9	2	Screw-HH
14	3296-29	3	Nut-Lock, NI
15	92-7084	1	Pulley-Idler, Flat
16	106-2057	1	Spacer
17	106-2056	1	Idler Arm ASM
17:2	1-653600	2	Bearing
17:3	302-11	1	Fitting-Lube, 45 DEG
18	71-2870	2	Bolt-Eye
19	321-3	6	Screw-HH
20	37-8880	1	Spring-Traction
21	106-3400	1	Latch ASM

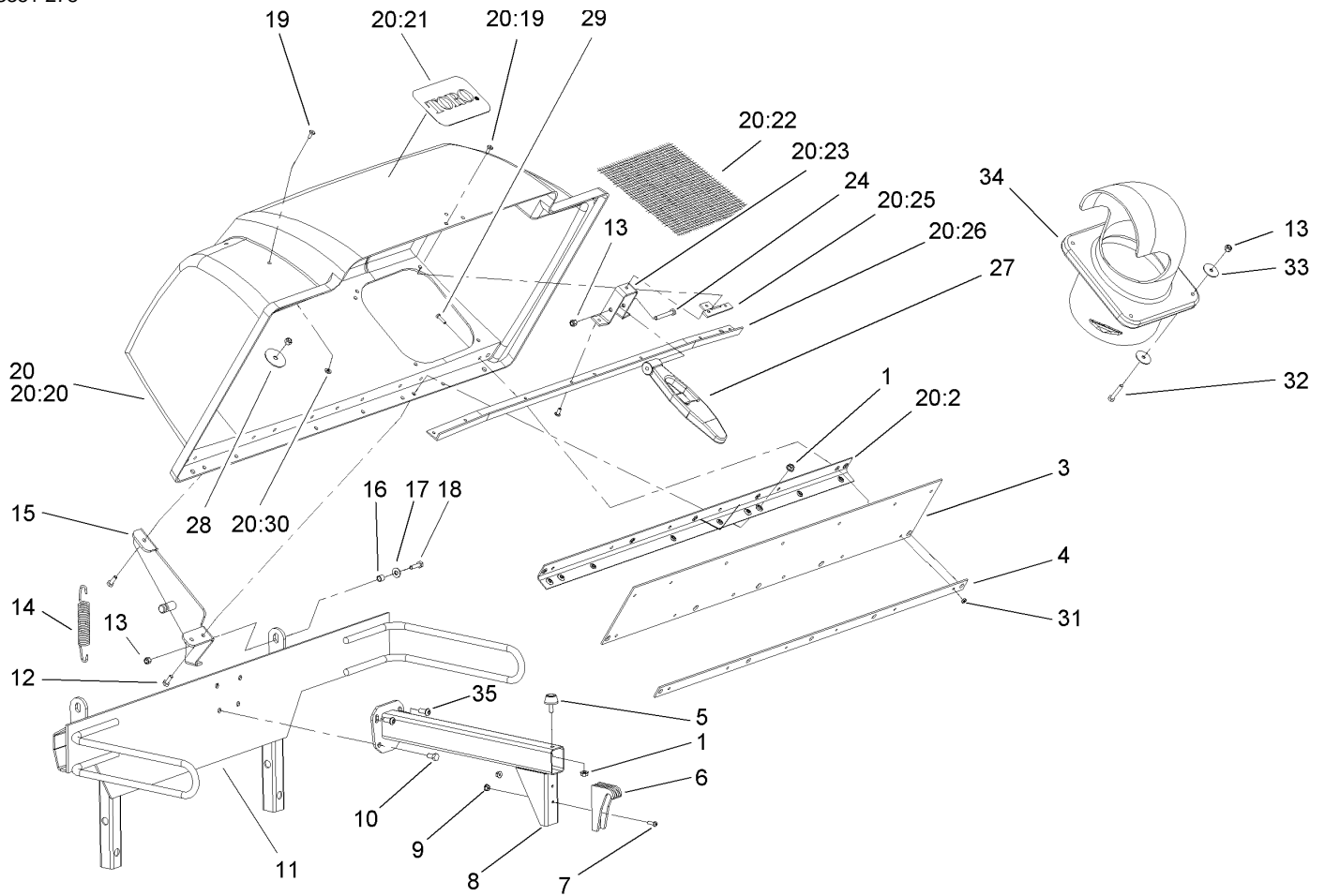
Ref	Part No.	Qty.	Description
22	3218-4	2	Nut-Jam
24	106-3414-01	1	Pedal-Latch
25	105-5996	1	Spacer
26	3229-1	4	Screw-CARR
27	106-4161	2	Knob-Handle
28	106-2092	1	Blower Outlet Adapter ASM
28:2	105-9102	1	Plate-Adapter, Top
28:3	105-9103	1	Plate-Adapter, Side
28:4	106-8000	8	Rivet
28:5	3256-53	8	Washer-Flat
29	102528	1	Clamp
30	105-5875	1	Hose-Flexible
31	707451	1	Spring-Extension
33	32128-33	2	Nut-HF
34	106-3420-03	1	Shelf-Blower
35	3230-18	2	Screw-CARR
36	32128-25	2	Nut-HF



### Bagger Mount Assembly

Ref	Part No.	Qty.	Description
1	322-5	8	Screw-HH
2	1-808289	2	Pin-Clevis
3	1-652308-03	1	Bagger Mount ASM
4	1-806005	2	Pin-Hair
5	32128-20	8	Nut-HF

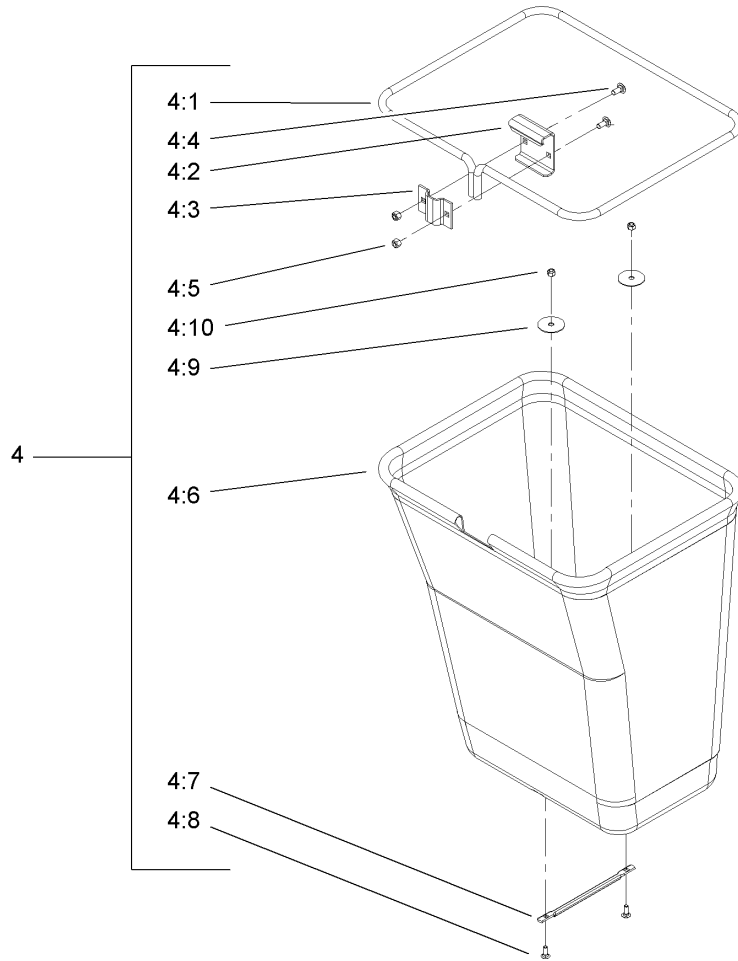
--	--	--	--



## Bag Support and Hood Assembly

Ref	Part No.	Qty.	Description
1	32128-33	7	Nut-HF
3	1-653425	1	Seal
4	1-653528-03	1	Plate-Backing
5	1-523420	1	Bumper
6	1-653404	1	Catch
7	3290-500	2	Screw-PPH
8	103-5124-03	1	Support-Bag
9	3290-148	2	Nut-HF
10	322-2	2	Screw-HH
11	103-4738-03	1	Bagger Upright ASM
12	321-4	6	Screw-HH
13	3296-42	7	Nut-Lock, NI
14	1-653544	2	Spring-Extension
15	1-652395-03	2	Hinge ASM
16	1-633545	2	Spacer
17	3256-2	2	Washer-Flat
18	321-6	2	Screw-HH
19	114439	7	Rivet-Pop
20	107-4089	1	Hood ASM
20:2	1-653397-03	1	Stiffener-Bagger, Top
20:19	114439	31	Rivet-Pop
20:20	107-4088	1	Top-Bagger
20:21	107-4084	1	Decal-Toro Logo
20:22	114967	1	Screen-Bagger

Ref	Part No.	Qty.	Description
20:23	1-653519	1	Anchor-Latch
20:25	1-653535	1	Reinforcement-Latch
20:26	1-653400-03	1	Support-Screen
20:30	3256-14	14	Washer-Flat
24	321-11	1	Screw-HH
27	1-653403	1	Latch
28	1-653036	2	Washer
29	1-803075	6	Screw-Head, Truss
31	32153-1	6	Nut-Lock, Side
32	321-9	4	Screw-HH
33	3256-58	8	Washer-Flat
34	106-3443	1	Adapter-Tube, Upper
35	3274-55	2	Screw-HSBH



## Bag Assembly

Ref	Part No.	Qty.	Description
4	1-654390	2	Bag ASM
4:1	1-653529-03	1	Frame-Bag
4:2	114973-03	1	Hanger-Bag
4:3	114974-03	1	Clamp
4:4	3230-1	2	Bolt-CARR
4:5	3296-29	2	Nut-Lock, NI
4:6	1-654389	1	Bag-Cloth
4:7	1-653566	1	Handle-Bag
4:8	3229-1	2	Screw-CARR
4:9	1-653036	2	Washer
4:10	3296-42	2	Nut-Lock, NI

--	--	--	--

