



**Count on it.**

**Parts Catalog**

**11-Blade EdgeSeries™ Forward Swept Reel DPA Cutting Unit with 5in Reel**

**Reelmaster® 5010 Series Traction Unit**

Model No. 03623—Serial No. 42000000 and Up



# Ordering Replacement Parts

To order replacement parts, please supply the part number, the quantity, and the description of each part desired.

## Understanding Reference Numbers

Each identified part in an illustration has a reference number. The reference number for a part also appears in the parts list, along with other information about the part.

This catalog uses two special reference number formats, one to indicate parts in a service assembly and another to indicate the quantity of a given part in an illustration.

## Service Assembly Reference Numbers

Parts in service assemblies have reference numbers in the form a:b. The a represents the reference number of the entire service assembly and the b represents a sequential number unique to each part within the service assembly.

For example, a wheel assembly might be identified by reference number 6, the tire by 6:1, the valve by 6:2, and the wheel by 6:3. When you order the assembly identified by reference number 6, you receive all parts identified by reference numbers 6:1, 6:2, and 6:3. However, you may also order any part individually. Reference numbers of this type appear in illustration and in parts lists.

## Reference Numbers Indicating Quantity

In an illustration, if a reference number indicates more than one part, the reference number has the form nX y. The n represents the quantity of the part, the X is the multiplication symbol, and the y represents the reference number.

For example, in an illustration, the reference number 2X 37 means that two of the parts identified by reference number 37 are indicated.

# Contents

Frame Assembly.....	4
Reel and Bedbar Assembly .....	6
5in EdgeSeries + 22in Fairway, 11 Blade, Low Drag, Forward Swept Reel Assembly No. 137-8427.....	8
Optional EdgeSeries+ 22in Fairway, 11 Blade, Low Drag, Radial Reel Assembly No. 137-8429.....	9
Optional Heavy-Duty MVP Kit No. 120-7230.....	10
Roller Assembly .....	11
Short Rear Roller Assembly No. 137-6105 .....	12
Optional Long Rear Roller Assembly No. 137-6107.....	13
Plastic Wiehle Roller Assembly No. 114-5400.....	14
Optional Plastic Shoulder Roller Assembly No. 114-5421 .....	15
Optional Full Front Roller Assembly No. 137-6111 .....	16
Optional High Height-of-Cut Assembly No. 137-0890 .....	17
Shield Assembly.....	18
Optional Tool Assembly.....	19
Attachments and Accessories .....	20



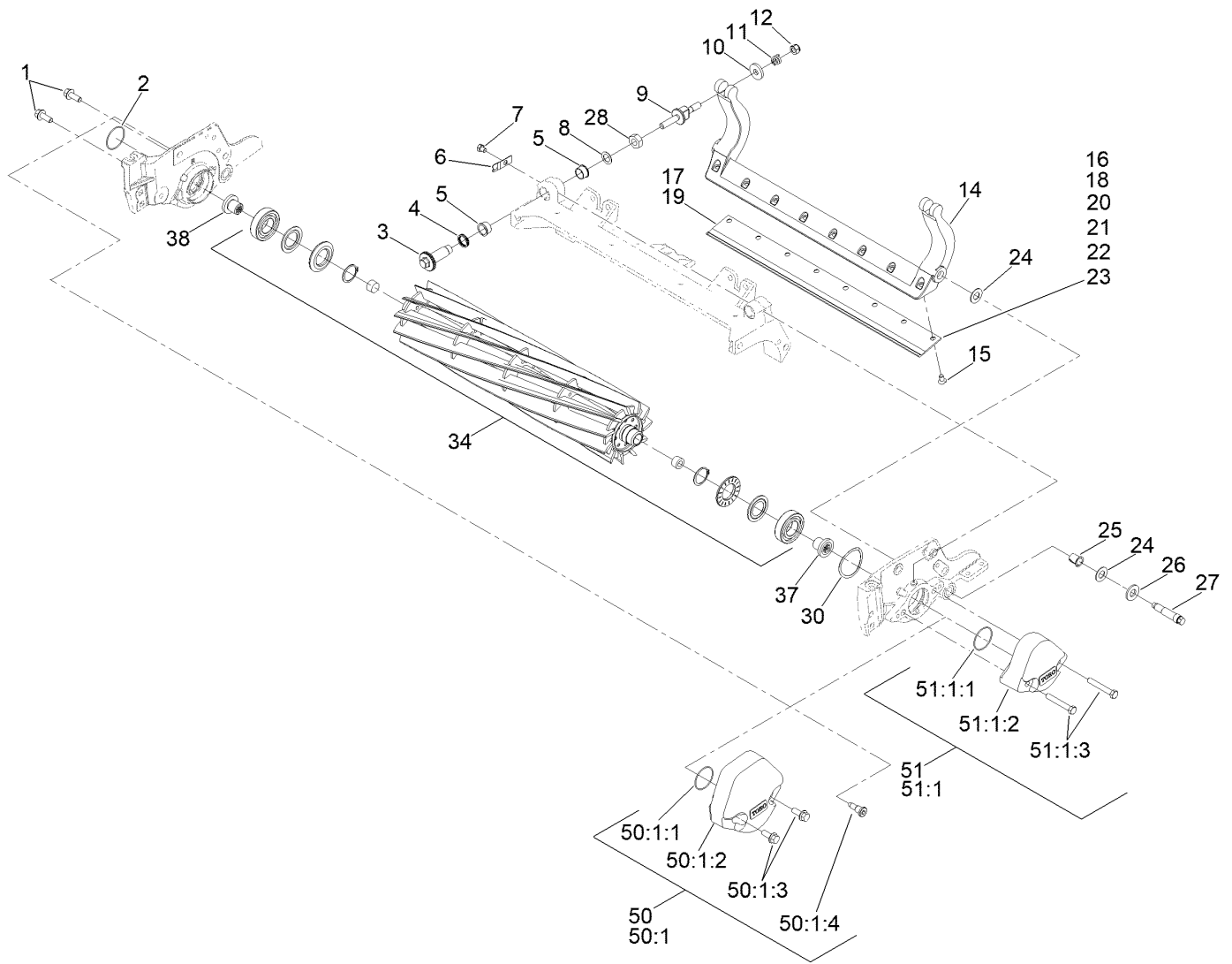
## Frame Assembly (continued)

<i>Ref.</i>	<i>Part Number</i>	<i>Qty.</i>	<i>Description</i>	<i>Ref.</i>	<i>Part Number</i>	<i>Qty.</i>	<i>Description</i>
1	127-0287	1	5 Inch RH Side Plate ASM	7	119-4042	7	Nut-HF, NI
1:1		1	5 Inch RH Side Plate Sub ASM ●▲	8	3290-357	5	Nut-HSF
1:1:2	127-7149	2	Insert-Threaded, Side Plate	9	112-1725	1	Spring-Compression
1:2	106-9618	1	Bushing-Rubber	12	110-4069	1	Bracket
1:3	302-39	1	Fitting-Plug	13	147-3561	1	Rod-5" Turf Comp
1:4	3245-35	1	Screw-Set, HSH	14	92-2762	1	Pin-Hair
1:5	117-8177	1	O-Ring	15	3231-25	4	Bolt-CARR
2	127-0285	1	5 Inch LH Side Plate ASM	16	119-8010-03	1	Kickstand ■
2:1		1	5 Inch LH Side Plate Sub ASM ●▲	17	107-7400	1	Pin-Lynch
2:1:2	127-7149	2	Insert-Threaded, Side Plate	18	110-4058	1	Bracket-Chain
2:2	106-9618	1	Bushing-Rubber	19	107-2951	1	Frame
2:3	302-39	1	Fitting-Plug	20	107-2979	4	Bolt-Shoulder
2:4	3245-35	1	Screw-Set, HSH	21	3234-19	2	Screw-HHF
2:5	117-8177	1	O-Ring	22	130-8094	2	Washer-Plain
3	104-3396	1	Screw-HH	23	108-4279	2	Spacer-Frame
4	99-8662	1	Tube-Spring	25	106-3937	1	Carrier Frame ASM
5	3218-5	3	Nut-Jam	25:2	93-2877	2	Bushing
6	87-7270	1	Washer-Thrust	26	302-5	1	Fitting-Grease
				27	67-9410	1	Washer

● Not illustrated  
▲ Not serviced separately

■ Optional Equipment

# Reel and Bedbar Assembly

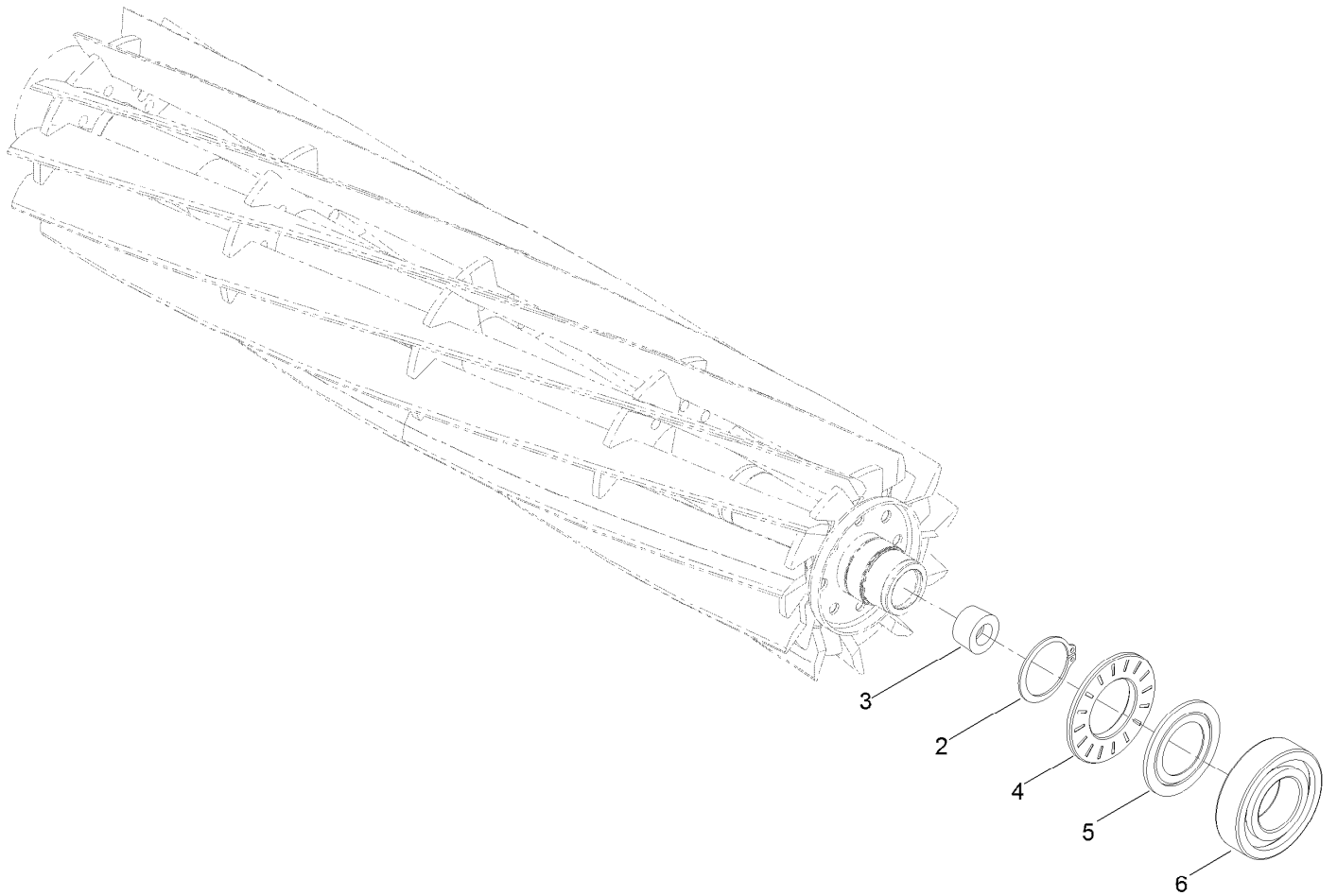


## Reel and Bedbar Assembly (continued)

<i>Ref.</i>	<i>Part Number</i>	<i>Qty.</i>	<i>Description</i>	<i>Ref.</i>	<i>Part Number</i>	<i>Qty.</i>	<i>Description</i>
1	3234-11	2	Screw-HHF	24	61-1950	4	Washer-Plastic
2	237-68	1	O-Ring	25	56-9520	2	Bushing-Flanged
3	120-5118	2	Shaft-Adjuster	26	131-4715	2	Washer
4	120-5116	2	Washer-Wave	27	106-9623	2	Bolt-Bedbar
5	106-5344	4	Bushing-Flange, Keyed	28	3296-33	4	Nut-Lock, NI
6	99-2097	2	Detent	30	115-5258	1	Spring-Wire, Flat
7	119-4067	2	Screw-HH	34	137-8427	1	ES Reel+,5In Fwy(22)11 Bld LD(Fsr)
8	108-0015	2	Washer-Flat	34	137-8429	1	ES Reel+,5In Fwy(22)11 Bld LD(Rr)
9	137-6130	2	Screw-Adjuster, Bedbar	37	130-0064	1	Insert-Threaded, 5 Inch (LH)
10	119-4155	2	Washer-Hardened	38	130-0063	1	Insert-Threaded, 5 Inch (RH)
11	120-5120	2	Spring-Compression	45	120-7230	1	Rm HD DPA MVP Kit ●■
12	119-4039	2	Nut-Hex	50	03411	1	Weight-5In, Elec W/O Attach ■
14	105-8095-01	1	Bedbar-Fairway	50:1		1	5 Inch Weight Kit (Electric) ▲
14	131-3220-0P	1	Bedbar-Aggressive, 5In ■	50:1:1	237-68	5	O-Ring
15	119-4151	8	Screw-Bedknife	50:1:2	127-4266-01	5	Weight-5 Inch End
16	147-1257	1	Bedknife-Tournament (Rm 22In) ■	50:1:3	3234-11	10	Screw-HHF
17	137-6094	1	Bedknife-Edgemax (Rm 22In) ■	50:1:4	127-7122	5	Bolt-Shoulder, Flange Hex Socket
18	147-1245	1	Bedknife-STD (Rm 22In) ■	51	03412	1	Weight-5In, HYD Cu W/O ATT ■
19	137-6093	1	Bedknife-Edgemax Lowcut (Rm 22In)	51:1		1	5 Inch Weight Kit (Hydraulic) ▲
20	147-1244	1	Bedknife-Lowcut (Rm 22In) ■	51:1:1	237-68	5	O-Ring
21	119-4280	1	Bedknife-Edgemax Extended Low HOC, Fairw ■	51:1:2	108-9090-01	5	Weight-End
22	147-1243	1	Bedknife-Lowcut EXT (Rm 22In) ■	51:1:3	323-12	10	Screw-HH
23	147-1246	1	Bedknife-Highcut (Rm 22In) ■				

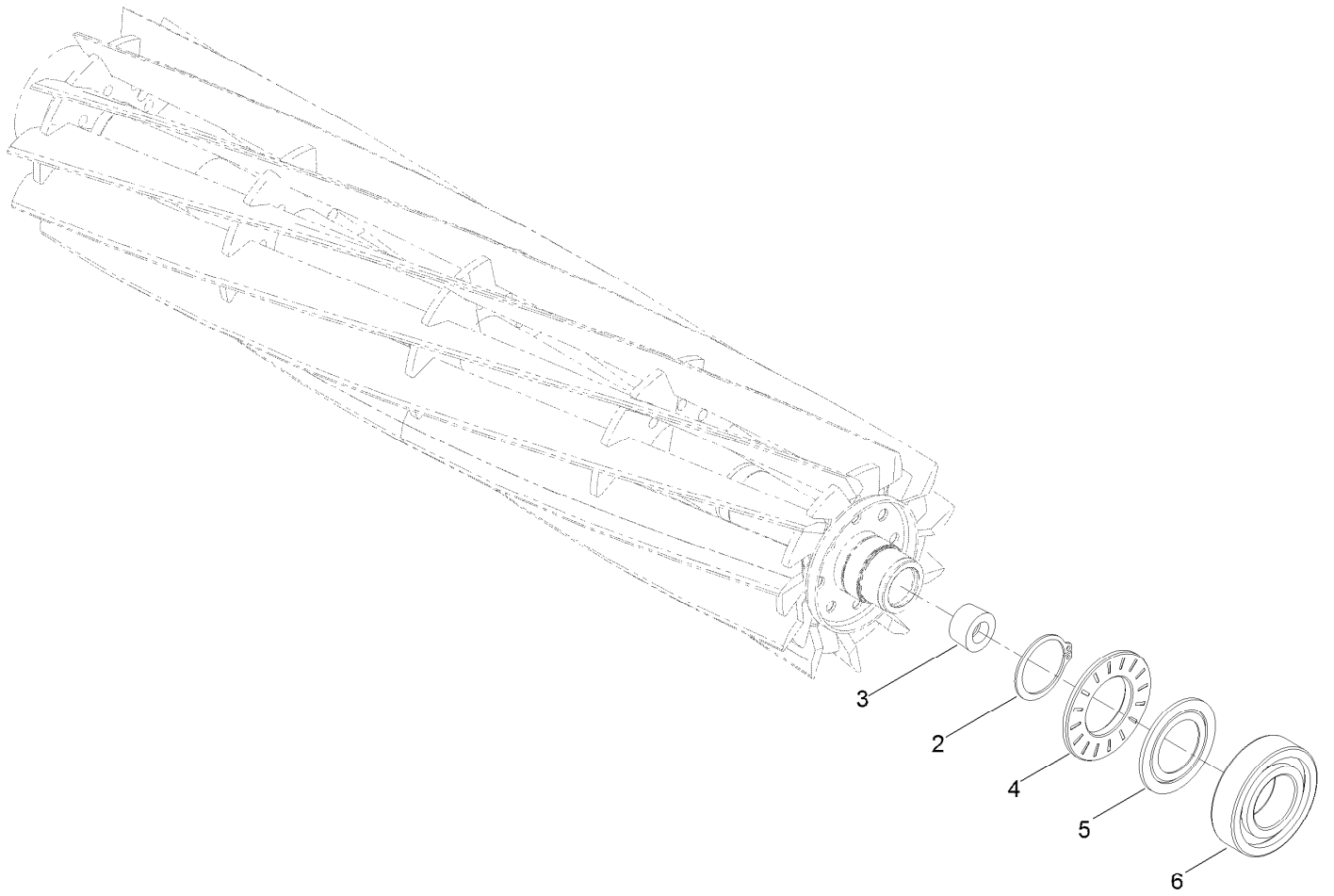
● Not illustrated  
▲ Not serviced separately

■ Optional Equipment



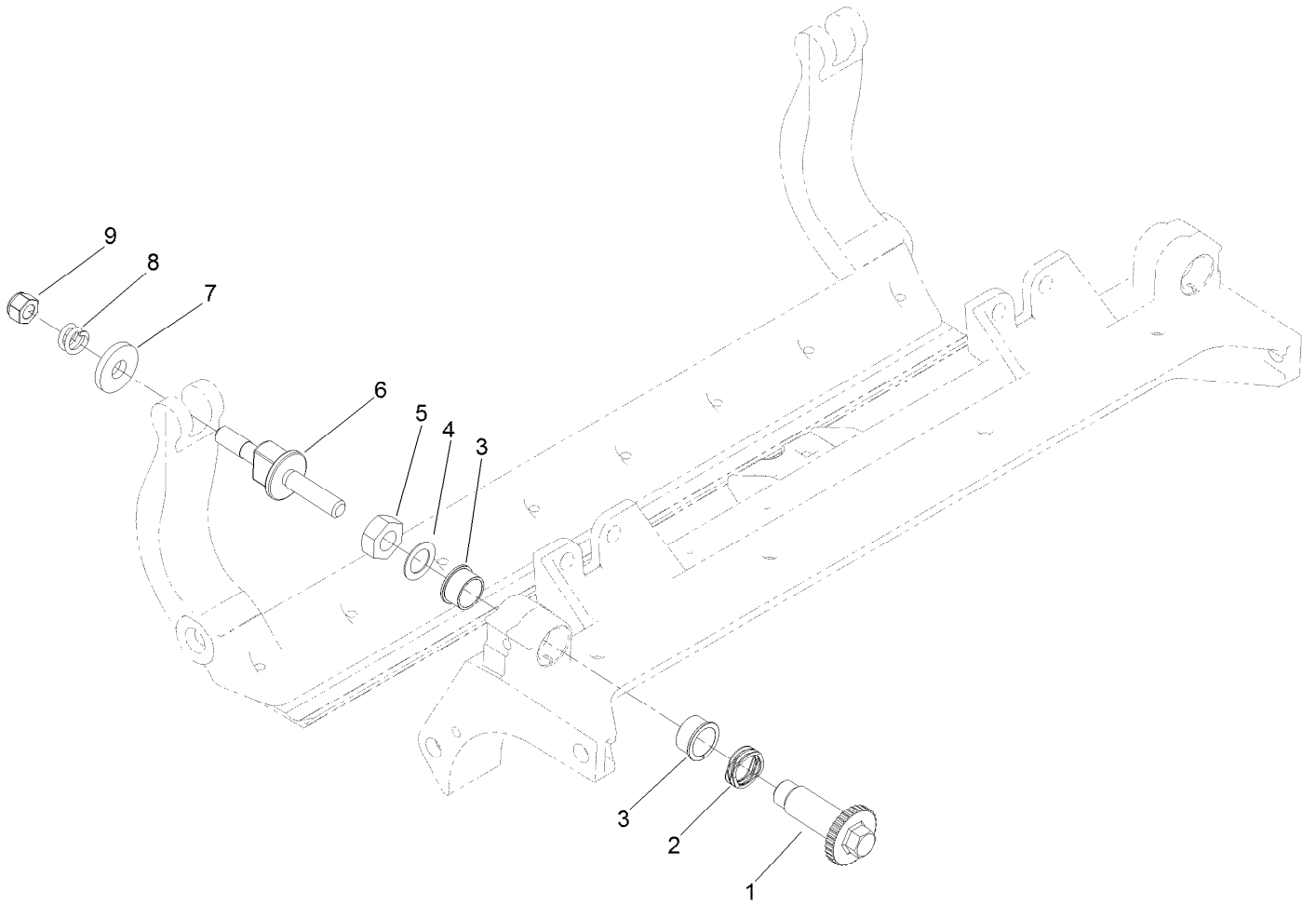
## 5in EdgeSeries + 22in Fairway, 11 Blade, Low Drag, Forward Swept Reel Assembly No. 137-8427

<i>Ref.</i>	<i>Part Number</i>	<i>Qty.</i>	<i>Description</i>
2	92-2601	2	Ring-Retaining
3	127-7118	2	Plug-Shaft, Reel
4	127-4284	2	Washer-Special
5	115-3299	2	Seal-Flocked
6	140-5510	2	Bearing-Sealed, Stainless



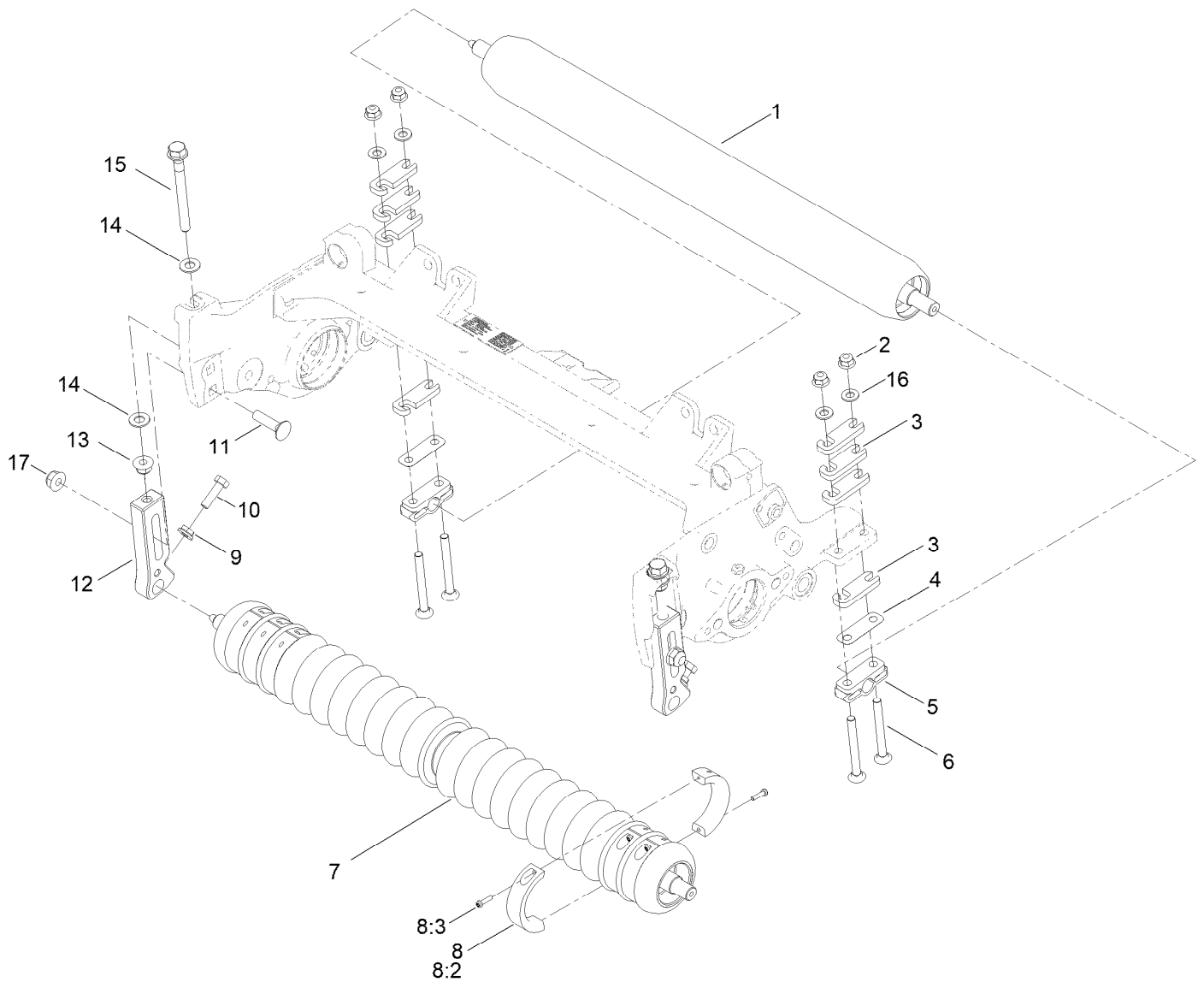
## Optional EdgeSeries+ 22in Fairway, 11 Blade, Low Drag, Radial Reel Assembly No. 137-8429

<i>Ref.</i>	<i>Part Number</i>	<i>Qty.</i>	<i>Description</i>
2	92-2601	2	Ring-Retaining
3	127-7118	2	Plug-Shaft, Reel
4	127-4284	2	Washer-Special
5	115-3299	2	Seal-Flocked
6	140-5510	2	Bearing-Sealed, Stainless



## Optional Heavy-Duty MVP Kit No. 120-7230

<i>Ref.</i>	<i>Part Number</i>	<i>Qty.</i>	<i>Description</i>
1	120-5118	2	Shaft-Adjuster
2	120-5116	2	Washer-Wave
3	106-5344	4	Bushing-Flange, Keyed
4	108-0015	2	Washer-Flat
5	3296-33	2	Nut-Lock, NI
6	137-6130	2	Screw-Adjuster, Bedbar
7	119-4155	2	Washer-Hardened
8	120-5120	2	Spring-Compression
9	119-4039	2	Nut-Hex

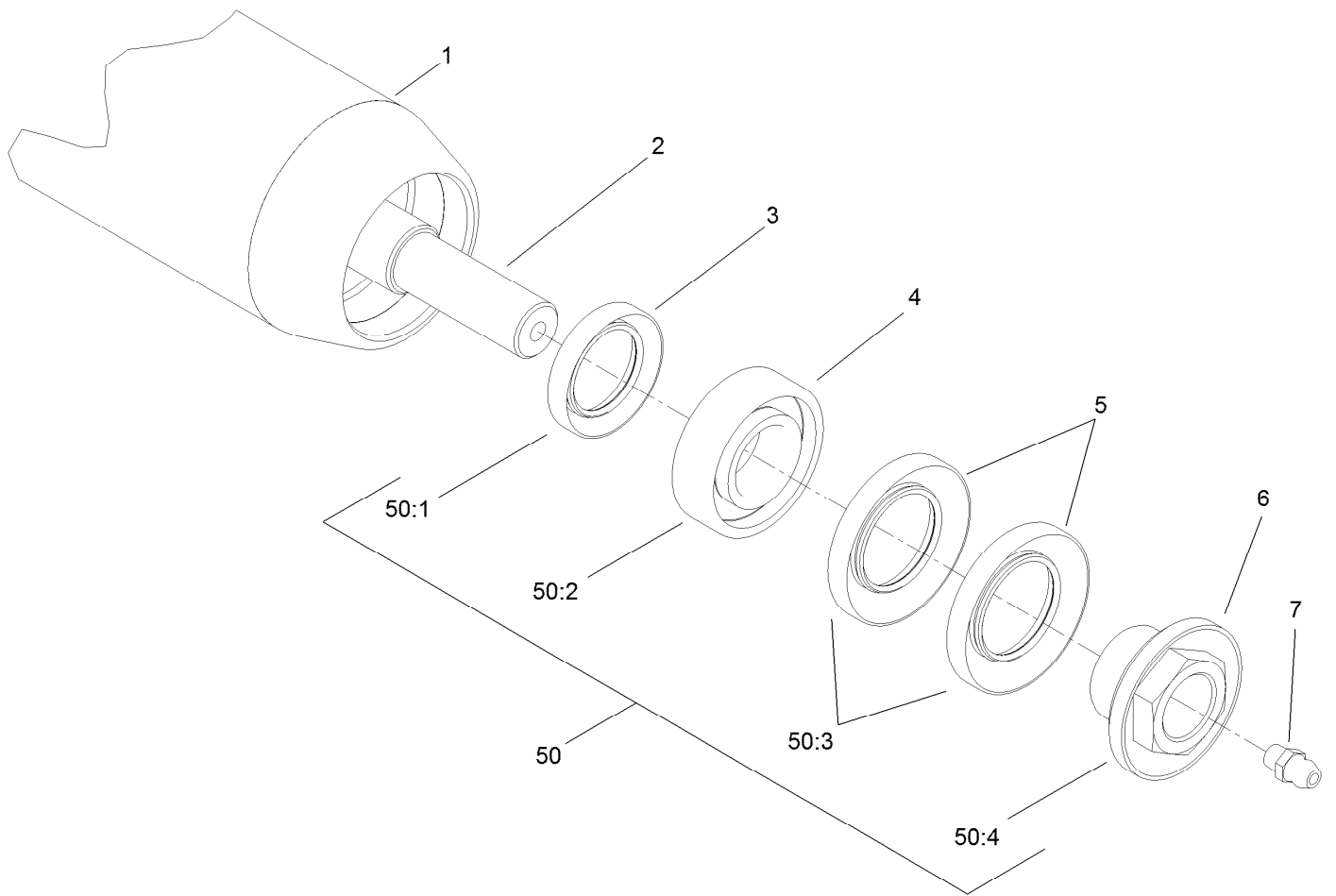


## Roller Assembly

Ref.	Part Number	Qty.	Description	Ref.	Part Number	Qty.	Description
1	137-6105	1	Short Rear Roller ASM (2.5In DIA)(22In)	8	104-8215	6	Collar Kit ■
1	137-6107	1	Long Rear Roller ASM (2.5In DIA)(22In) ● ■	8:2	100-4959	2	Collar
2	119-4041	4	Nut-HF	8:3	104-1835	2	Screw
3	119-0626	4	Shim-Roller	9	32128-20	2	Nut-HF
4	140-5530	2	Shim-Roller (.01") ■	10	322-16	2	Screw-HH
5	106-3924	2	Bracket-Roller, Rear	11	3231-4	2	Screw-CARR
6	3230-7	4	Bolt-CARR	12	140-5690	2	Bracket-Rm Front HOC
7	114-5400	1	Plastic Wiehle Roller ASM	13	119-4042	2	Nut-HF, NI
7	114-5421	1	Plastic Shoulder Roller ASM ● ■	14	48-9220	4	Washer-Flat
7	137-6111	1	Full Front Roller ASM (3In DIA)(22In) ● ■	15	140-5522	2	Screw-HHF 5/8, Patch
				16	94-6936	4	Washer-Hard
				17	133-7570	2	Nut-Flange, NI
				50	137-0890	1	Rm DPA High HOC Kit (F18 & Up) ● ■

● Not illustrated

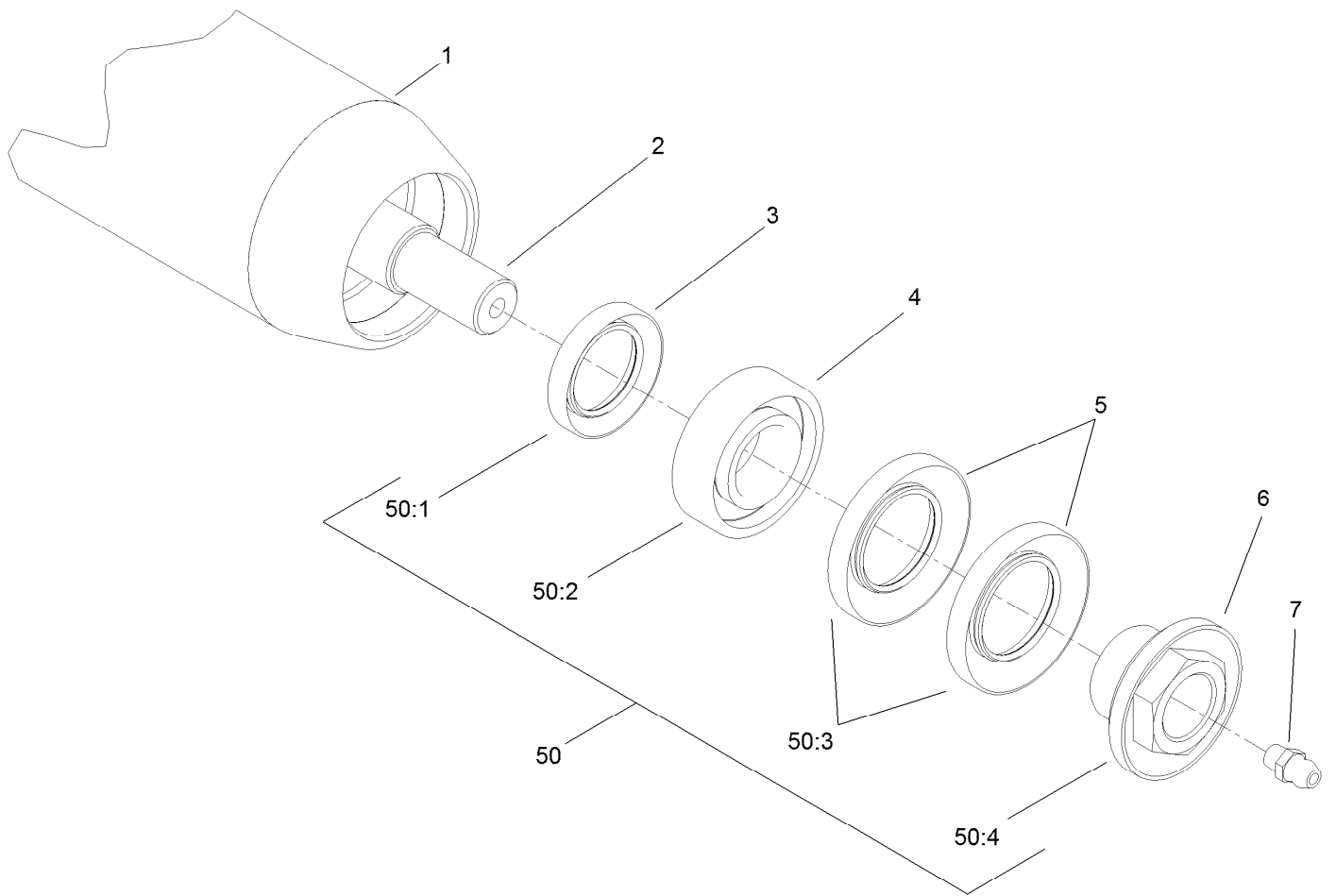
■ Optional Equipment



## Short Rear Roller Assembly No. 137-6105

<i>Ref.</i>	<i>Part Number</i>	<i>Qty.</i>	<i>Description</i>
1	137-6104	1	Tube Roller 2.5In DIA X 20.5In
2	114-5410	1	Shaft-Short, Rear Roller
3	114-3717	2	Seal-Oil
4	112-5290	2	Bearing-Steel, Stainless
5	112-7494	4	Seal
6	147-0701	2	Nut-Lock, Bearing
7	302-5	2	Fitting-Grease
50	114-5430	1	Roller Rebuild Kit ●
50:1	114-3717	2	Seal-Oil
50:2	112-5290	2	Bearing-Steel, Stainless
50:3	112-7494	4	Seal
50:4	147-0701	2	Nut-Lock, Bearing

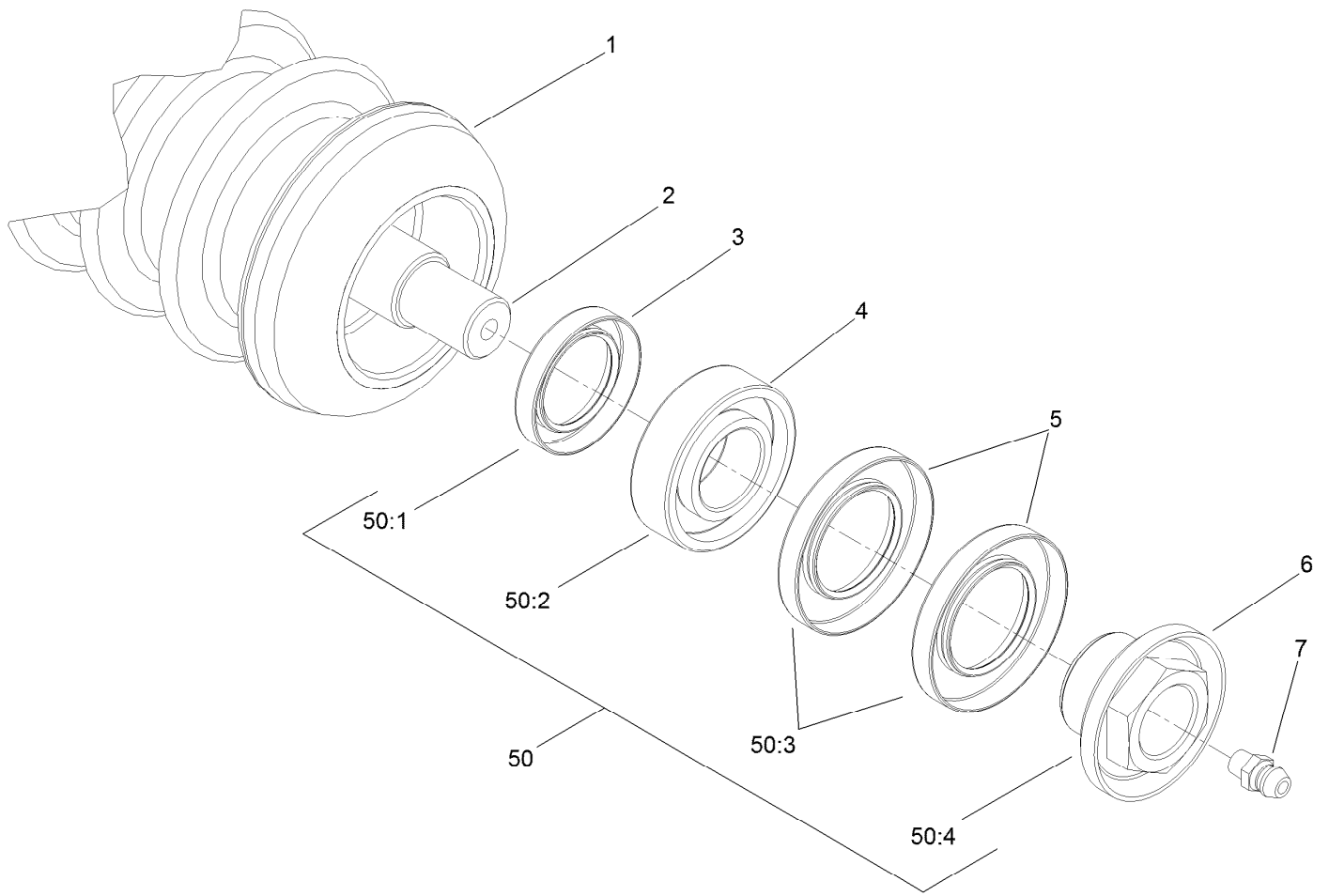
● Optional Equipment



## Optional Long Rear Roller Assembly No. 137-6107

<i>Ref.</i>	<i>Part Number</i>	<i>Qty.</i>	<i>Description</i>
1	137-6106	1	Tube Roller 2.5In DIA X 23In
2	114-5407	1	Shaft-Long, Rear Roller
3	114-3717	2	Seal-Oil
4	112-5290	2	Bearing-Steel, Stainless
5	112-7494	4	Seal
6	147-0701	2	Nut-Lock, Bearing
7	302-5	2	Fitting-Grease
50	114-5430	1	Roller Rebuild Kit ●
50:1	114-3717	2	Seal-Oil
50:2	112-5290	2	Bearing-Steel, Stainless
50:3	112-7494	4	Seal
50:4	147-0701	2	Nut-Lock, Bearing

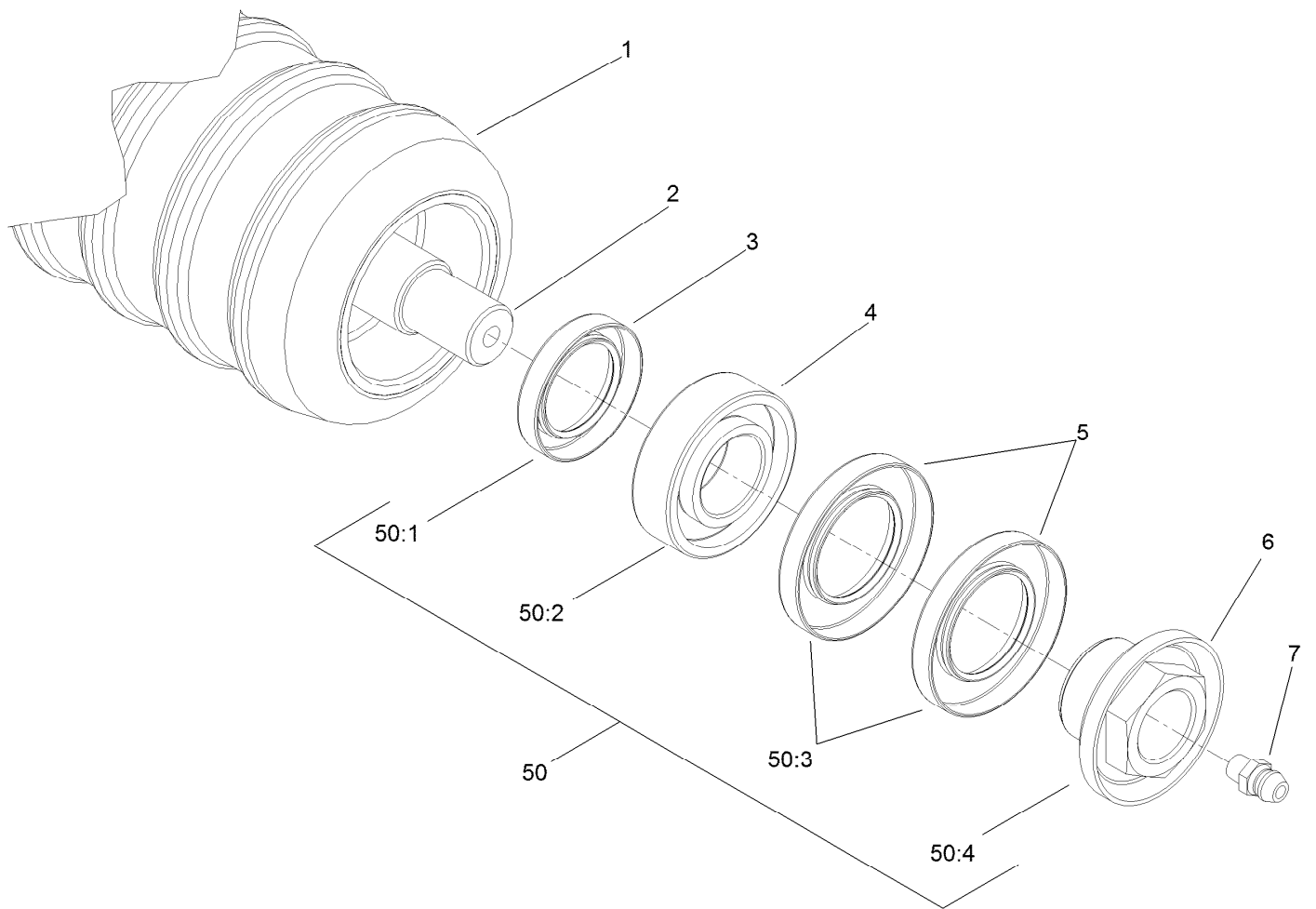
● Optional Equipment



## Plastic Wiehle Roller Assembly No. 114-5400

<i>Ref.</i>	<i>Part Number</i>	<i>Qty.</i>	<i>Description</i>
1	114-5401	1	Wiehle Roller Plastic (22In)
2	114-5403	1	Shaft-Roller, Front
3	114-3717	2	Seal-Oil
4	112-5290	2	Bearing-Steel, Stainless
5	112-7494	4	Seal
6	147-0701	2	Nut-Lock, Bearing
7	302-5	2	Fitting-Grease
50	114-5430	1	Roller Rebuild Kit ●
50:1	114-3717	2	Seal-Oil
50:2	112-5290	2	Bearing-Steel, Stainless
50:3	112-7494	4	Seal
50:4	147-0701	2	Nut-Lock, Bearing

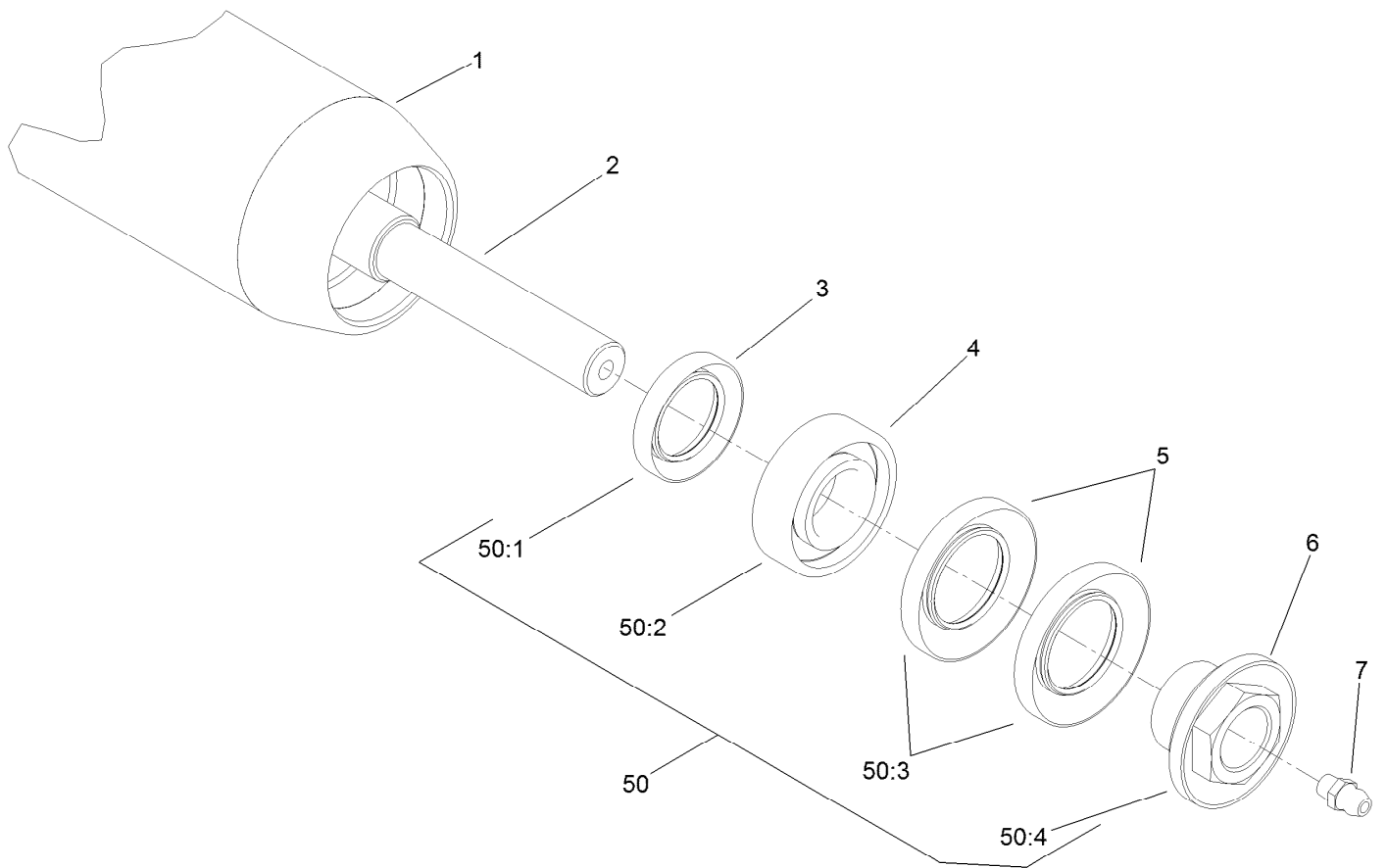
● Optional Equipment



## Optional Plastic Shoulder Roller Assembly No. 114-5421

<i>Ref.</i>	<i>Part Number</i>	<i>Qty.</i>	<i>Description</i>
1	114-5422	1	Roller-Shoulder, Plastic
2	114-5403	1	Shaft-Roller, Front
3	114-3717	2	Seal-Oil
4	112-5290	2	Bearing-Steel, Stainless
5	112-7494	4	Seal
6	147-0701	2	Nut-Lock, Bearing
7	302-5	2	Fitting-Grease
50	114-5430	1	Roller Rebuild Kit ●
50:1	114-3717	2	Seal-Oil
50:2	112-5290	2	Bearing-Steel, Stainless
50:3	112-7494	4	Seal
50:4	147-0701	2	Nut-Lock, Bearing

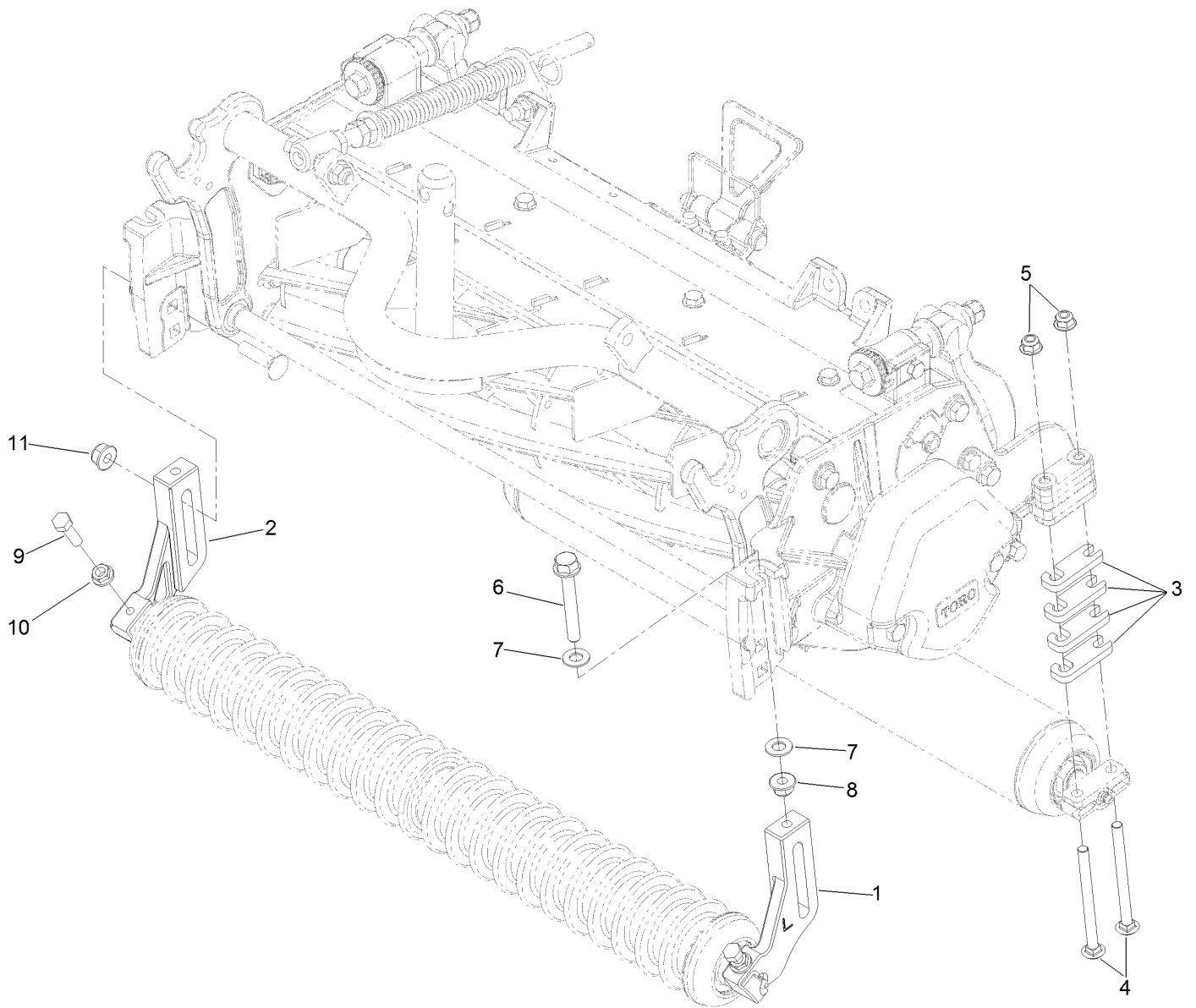
● Optional Equipment



## Optional Full Front Roller Assembly No. 137-6111

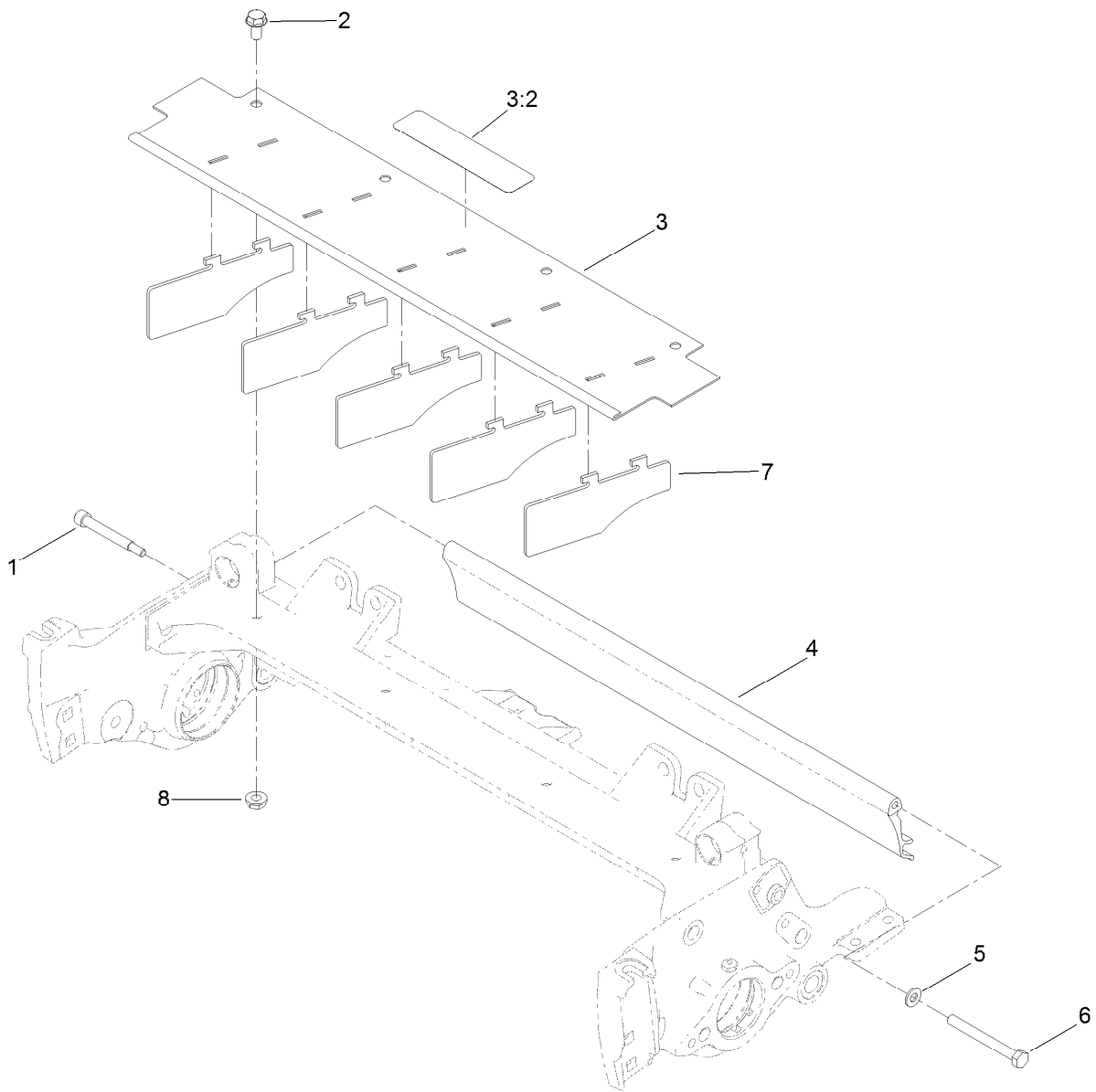
<i>Ref.</i>	<i>Part Number</i>	<i>Qty.</i>	<i>Description</i>
1	137-6110	1	Tube Roller 3.0In DIA X 24.5In
2	114-5403	1	Shaft-Roller, Front
3	114-3717	2	Seal-Oil
4	112-5290	2	Bearing-Steel, Stainless
5	112-7494	4	Seal
6	147-0701	2	Nut-Lock, Bearing
7	302-5	2	Fitting-Grease
50	114-5430	1	Roller Rebuild Kit ●
50:1	114-3717	2	Seal-Oil
50:2	112-5290	2	Bearing-Steel, Stainless
50:3	112-7494	4	Seal
50:4	147-0701	2	Nut-Lock, Bearing

● Optional Equipment



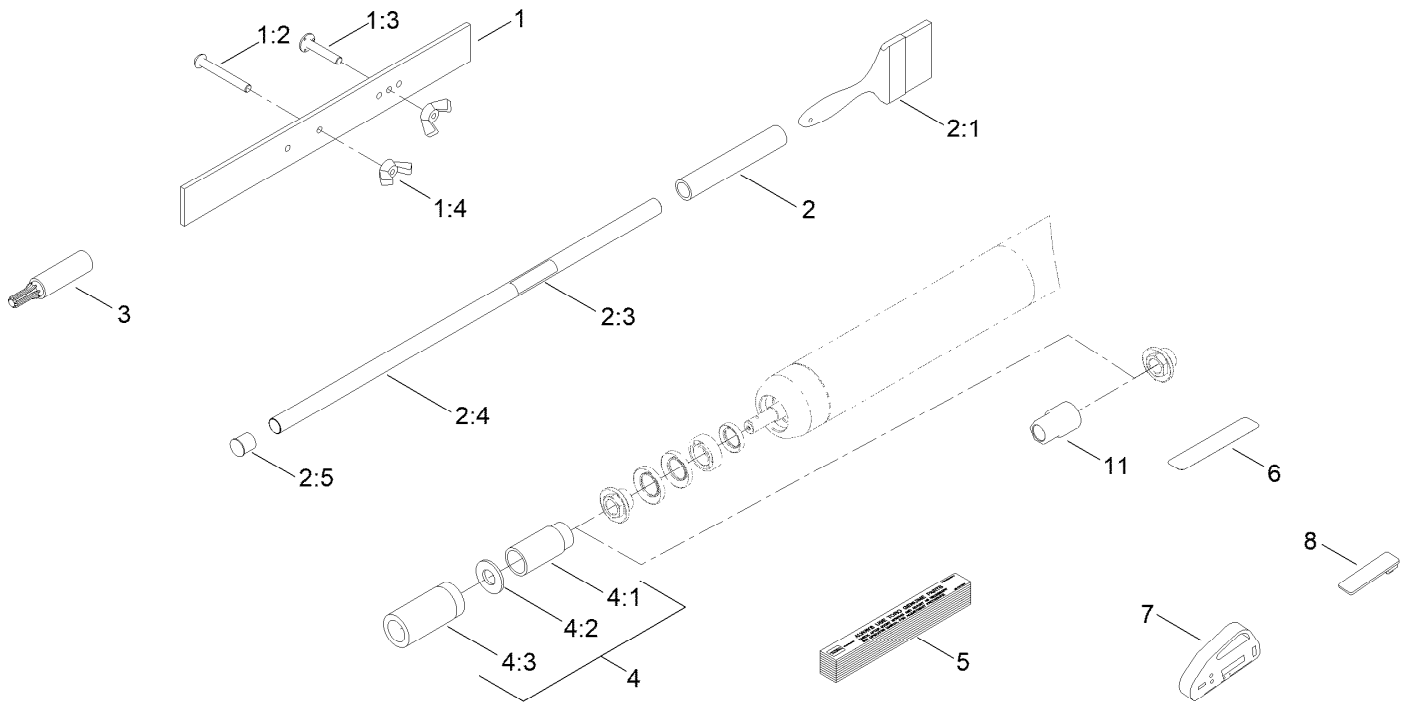
## Optional High Height-of-Cut Assembly No. 137-0890

<i>Ref.</i>	<i>Part Number</i>	<i>Qty.</i>	<i>Description</i>
1	120-0404	1	Bracket-High HOC (LH)
2	120-0405	1	Bracket-High HOC (RH)
3	119-0626	8	Shim-Roller
4	3230-30	4	Screw-CARR
4	106-9758	4	Screw-CARR
5	119-4041	4	Nut-HF
6	140-5523	2	Screw-HHF 5/8, Patch
7	48-9220	4	Washer-Flat
8	119-4042	4	Nut-HF, NI
9	322-16	2	Screw-HH
10	32128-20	2	Nut-HF
11	133-7570	2	Nut-Flange, NI



## Shield Assembly

<b>Ref.</b>	<b>Part Number</b>	<b>Qty.</b>	<b>Description</b>
1	107-7773	1	Screw-HSH
2	3234-7	4	Screw-HHF
3	107-2996	1	Front Grass Shield ASM
3:2	137-9706	1	Decal-Warning
4	125-2098	1	Shield-Grass, Rear (5 Inch)
5	3256-74	1	Washer-Flat
6	322-14	1	Screw-HH
7	110-1706	5	Deflector
8	32128-20	4	Nut-HF



## Optional Tool Assembly

Ref.	Part Number	Qty.	Description	Ref.	Part Number	Qty.	Description
1	108-6715	1	Gauge Bar ASM	4:1	115-0852	1	Tool-Inner Seal
1:2	32122-54	1	Screw-Head, Truss	4:2	107-8133	1	Washer-Flat
1:3	108-6714	1	Stud-Weld	4:3	115-0853	1	Tool-Bearing/Outer Seal
1:4	32103-3	2	Nut-Wing	5	125-5610	1	Paper-Reel, Toro (10 Pack)
2	29-9100	1	Brush And Handle ASM	6	140-5531	1	Shim-Toro Reel (.002In)
2:1	36-4310	1	Brush	7	131-6828	1	Indicator-Angle
2:3	98-3206	1	Decal	8	131-6829	1	Mount-Indicator, Angle
2:4	29-9080	1	Handle	9	137-0924	1	Tool-Hand TAP 7/8-16 (Rm DPA Reel) ●
2:5	2410-18	1	Cap-Plastic	10	137-0925	1	Tool-Hand TAP 7/8-16, LH (Rm DPA Reel) ●
3	TOR4112	1	Adapter-Drive, Reel ■	11	147-1132	1	Tool-Drive, Roller Nut
4	115-0803	1	Rm/Gm Roller Rebuild Tool Kit				

● Not illustrated

■ Obtain directly from K-Line Industries, Inc. (<https://klineind.com>)

# Attachments and Accessories

## For 03623 — 11-Blade EdgeSeries Forward Swept Reel DPA Cutting Unit with 5in Reel Reelmaster 5010 Series Traction Unit

Product Name	Model/Part
Bedknife-Tournament (RM 22in).....	147-1257
5 Inch Reel Verticutter .....	03618
22in Fairway Flex Grass Basket Kit .....	03415
22in Fairway Compact Grass Basket Kit.....	03416
Rear Roller Brush Kit (5 Inch Reel) .....	03406
Groomer Rod Kit.....	131-6845
Weight Kit for 8-Blade or 11-Blade Electric DPA Cutting Unit with 5 Inch Reel .....	03411
Weight Kit for 8-Blade or 11-Blade Hydraulic DPA Cutting Unit with 5 Inch Reel .....	03412
Rear Roller Brush or Groomer Weight Kit for DPA Cutting Unit with 5 Inch Reel .....	03413
Rear Lift Cylinder Limit Kit .....	110-9604
Rear Roller Scraper Kit.....	107-3280
Wiehle Scraper ASM .....	107-2993-03
Long Rear Roller Asm (2.5in Dia)(22in) .....	137-6107
Comb/Scraper Kit .....	110-1735
Full Front Roller Asm (3in Dia)(22in).....	137-6111
3in Full Front Roller Scraper .....	110-9602-03
Plastic Shoulder Roller ASM.....	114-5421
Shoulder Roller Scraper ASM.....	110-9609-03
High Height-of-Cut Kit, Reelmaster 3000 or 5000 Series DPA Cutting Unit .....	137-0890
3in Dia Collar Kit.....	104-8215
Cutting Unit Kickstand .....	119-8010-03
Roller Rebuild Tool Kit.....	115-0803
Reel Drive Adapter (Obtain directly from K-Line Industries, Inc. (800) 241-0936) .....	TOR4112
Brush-Roller (High Height-Of-Cut).....	110-1740
22in Rear Roller HD Brush .....	137-0842
Gauge Bar Assembly.....	108-6715
Roller Rebuild Kit.....	114-5430
Groomer/RRB Seal Kit.....	131-3233
Heavy-Duty DPA MVP Kit.....	120-7230
Rear Roller Adjustment Kit.....	125-0570
Bedbar-Aggressive, 5in .....	131-3220-0P
Bedknife-Edgemax (rm 22in) .....	137-6094
Bedknife-STD (RM 22in).....	147-1245
Bedknife-Edgemax Lowcut.....	137-6093
Bedknife-Lowcut (RM 22in) .....	147-1244
Bedknife Edgemax Low cut Extended (Fairway).....	119-4280
Bedknife-Lowcut Ext (RM 22in) .....	147-1243
Bedknife-Highcut (RM 22in).....	147-1246
Universal Groomer Cartridge, Reelmaster 3555, 3575, 5010, and 5010-H Series 22-inch EdgeSeries Cutting Units with Universal Groomer .....	03772
Grooming Brush (22In) .....	03767
5in EdgeSeries+ 22in Fairway, 11 Blade, Low Drag, Forward Swept Reel .....	137-8427
5 Inch Universal/bi-directional Groomer.....	03763
Broomer Kit (22In) .....	132-7125
Rear Roller Brush Kit (For Universal Groomer) (22in).....	03658

## Attachments and Accessories (continued)

Weight Kit (For Universal Groomer Only and Hydraulic Reel Motors).....	03417
Tool-hand Tap 7/8-16 (RM DPA Reel) .....	137-0924
Tool-hand Tap 7/8-16, LH (RM DPA Reel).....	137-0925
Universal Groomer Drive MVP Kit, Reelmaster 18-inch or 22-inch EdgeSeries Cutting Units with 5-inch Reel .....	140-5605
Rear Roller Brush (Universal) MVP Kit .....	133-0153
Rear Roller Brush MVP Kit .....	133-0157
Toro Reel Paper (10 Pack).....	125-5610
Angle Indicator.....	131-6828
Angle Indicator Mount.....	131-6829
Shim-TORO Reel (.002in) .....	140-5531

**Notes:**

**Notes:**



**Count on it.**