



Count on it.

Parts Catalog

Bagger Kit
Z Master® 4000 Series Riding Mower

Model No. 78479—Serial No. 420000000 and Up



Ordering Replacement Parts

To order replacement parts, please supply the part number, the quantity, and the description of each part desired.

Understanding Reference Numbers

Each identified part in an illustration has a reference number. The reference number for a part also appears in the parts list, along with other information about the part.

This catalog uses two special reference number formats, one to indicate parts in a service assembly and another to indicate the quantity of a given part in an illustration.

Service Assembly Reference Numbers

Parts in service assemblies have reference numbers in the form a:b. The a represents the reference number of the entire service assembly and the b represents a sequential number unique to each part within the service assembly.

For example, a wheel assembly might be identified by reference number 6, the tire by 6:1, the valve by 6:2, and the wheel by 6:3. When you order the assembly identified by reference number 6, you receive all parts identified by reference numbers 6:1, 6:2, and 6:3. However, you may also order any part individually. Reference numbers of this type appear in illustration and in parts lists.

Reference Numbers Indicating Quantity

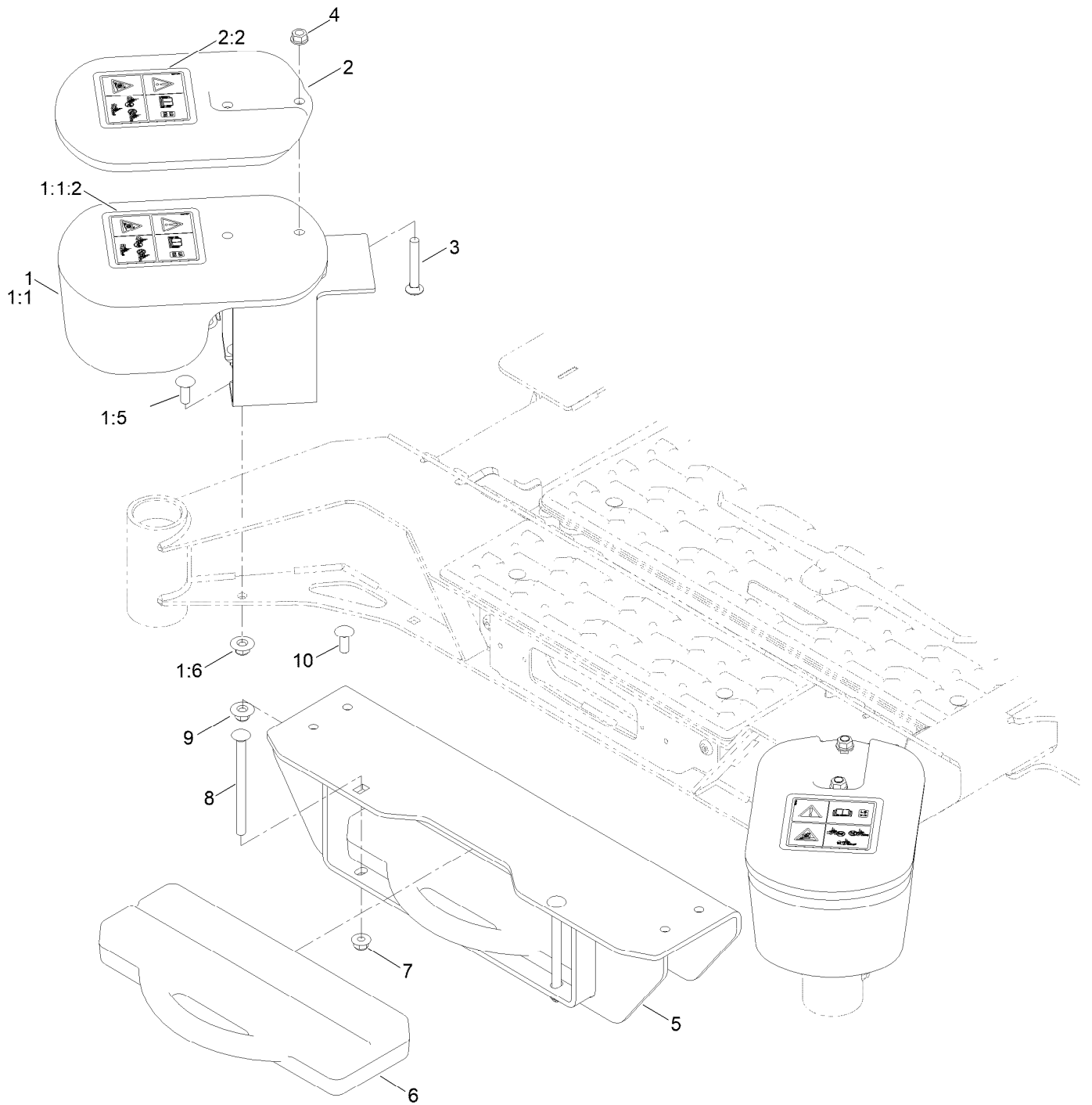
In an illustration, if a reference number indicates more than one part, the reference number has the form nX y. The n represents the quantity of the part, the X is the multiplication symbol, and the y represents the reference number.

For example, in an illustration, the reference number 2X 37 means that two of the parts identified by reference number 37 are indicated.

Contents

Weight Assembly	4
Bagger and Tube Mount Assembly	6
Triple Bagger Assembly No. 145-6974	8
Bag Assembly No. 161-6779	10
Lower Tube Assembly No. 109-1973	12

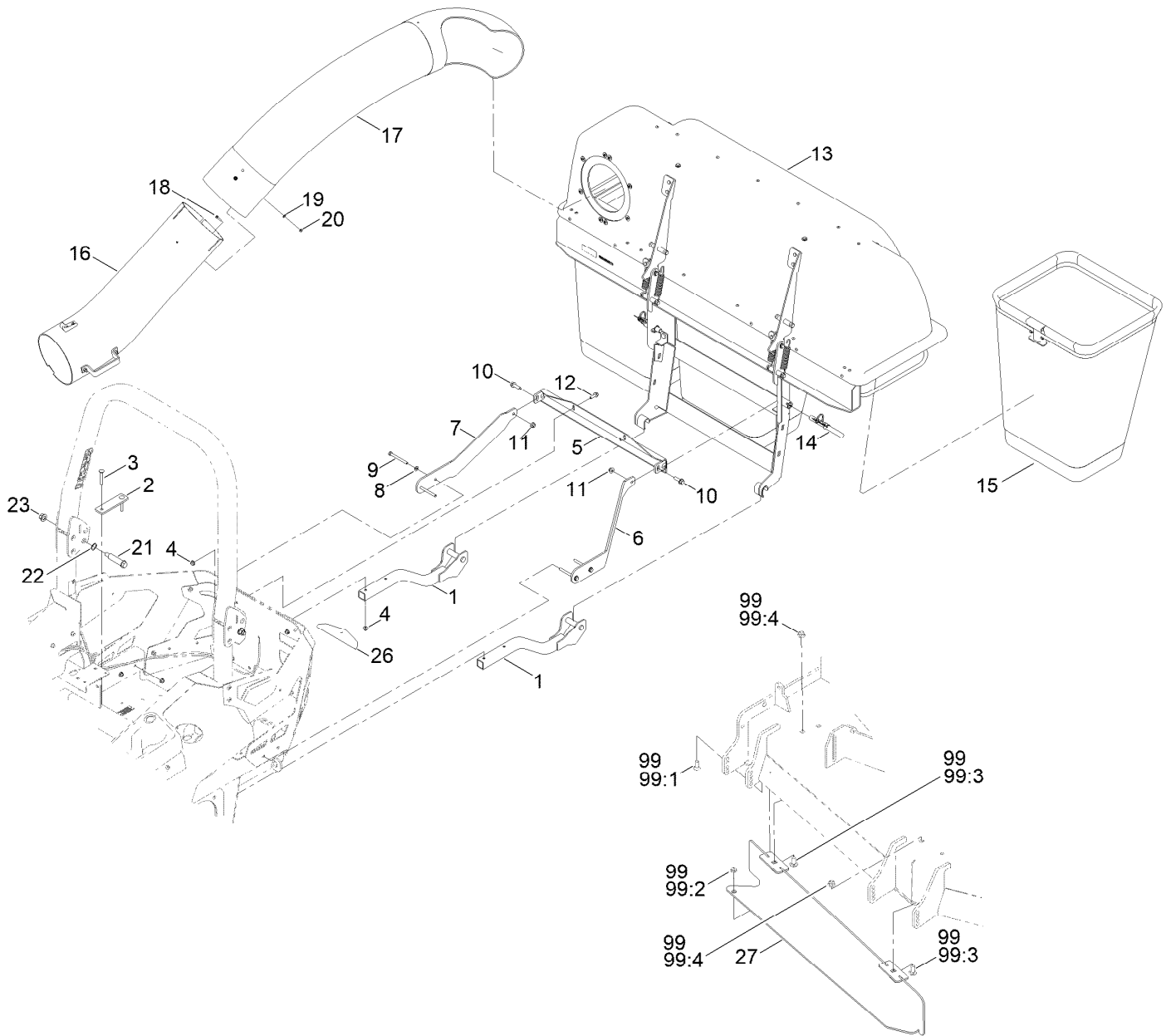
Weight Assembly



Weight Assembly (continued)

<i>Ref.</i>	<i>Part Number</i>	<i>Qty.</i>	<i>Description</i>	<i>Ref.</i>	<i>Part Number</i>	<i>Qty.</i>	<i>Description</i>
1	144-2660	2	ASM-Caster Weight	4	3290-357	4	Nut-HSF
1:1	126-7639	1	Weight With Decal ASM	5	144-6640-01	1	Weight Bracket ASM [red]
1:1:2	126-4662	1	Decal-Warning, Traction	6	109-9742-03	2	Weight-35 Pound
1:5	3231-22	2	Screw-CARR	7	119-4042	2	Nut-HF, NI
1:6	109-6658	2	Nut-Flange, NI	8	109-6795	2	Bolt-CARR
2	126-9684	2	Weight	9	109-6658	4	Nut-Flange, NI
2:2	126-4662	1	Decal-Warning, Traction	10	3231-22	4	Screw-CARR
3	3231-31	4	Screw-CARR				

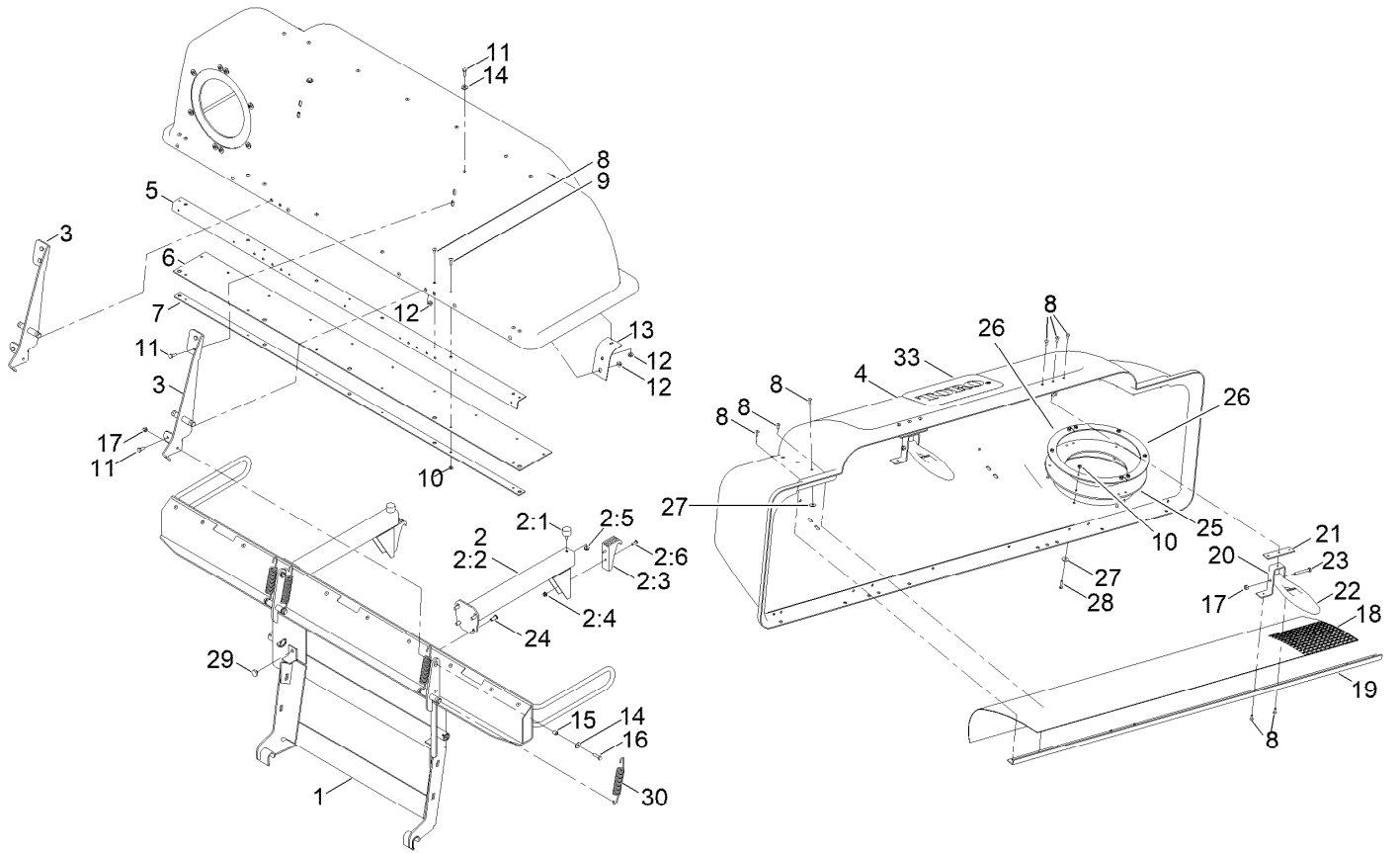
Bagger and Tube Mount Assembly



Bagger and Tube Mount Assembly (continued)

<i>Ref.</i>	<i>Part Number</i>	<i>Qty.</i>	<i>Description</i>	<i>Ref.</i>	<i>Part Number</i>	<i>Qty.</i>	<i>Description</i>
1	144-0427-03	2	Support, Lower [black]	17	109-3525	1	Tube-Upper
2	144-0426-01	2	Plate-Backer	18	32105-13	3	Screw-HWH
3	3230-7	4	Bolt-CARR	19	3256-14	3	Washer-Flat
4	119-4041	10	Nut-HF	20	3296-2	3	Nut-Lock, NI
5	126-9262-03	1	Support-Bagger, Upper	21	126-9209	2	Bolt-Shoulder
6	144-0425-01	1	Bracket-Upper, LH	22	119-4164	2	Washer-Wave
7	144-0423-01	1	Bracket-Upper, RH	23	139-1689	2	Nut-HF
8	3256-23	4	Washer-Plain	26	126-8299	1	Cover-Hitch
9	126-8742	4	Screw-HH	27	145-1257-01	1	Baffle-Bagger, 60 [red]
10	119-4061	2	Screw-HHF	99	163-7455	1	Bagger Baffle Hardware ASM
11	119-4042	2	Nut-HF, NI	99:1	3230-16	1	Screw-CARR
12	3234-29	2	Screw-HHF	99:2	119-4041	1	Nut-HF
13	145-6974	1	Triple Bag Hood ASM	99:3	3231-27	2	Screw-CARR
14	116-0458	2	Pin-Mount, Bagger	99:4	119-4042	2	Nut-HF, NI
15	161-6779	3	Bag And Frame ASM				
16	109-1973	1	Lower Tube ASM				

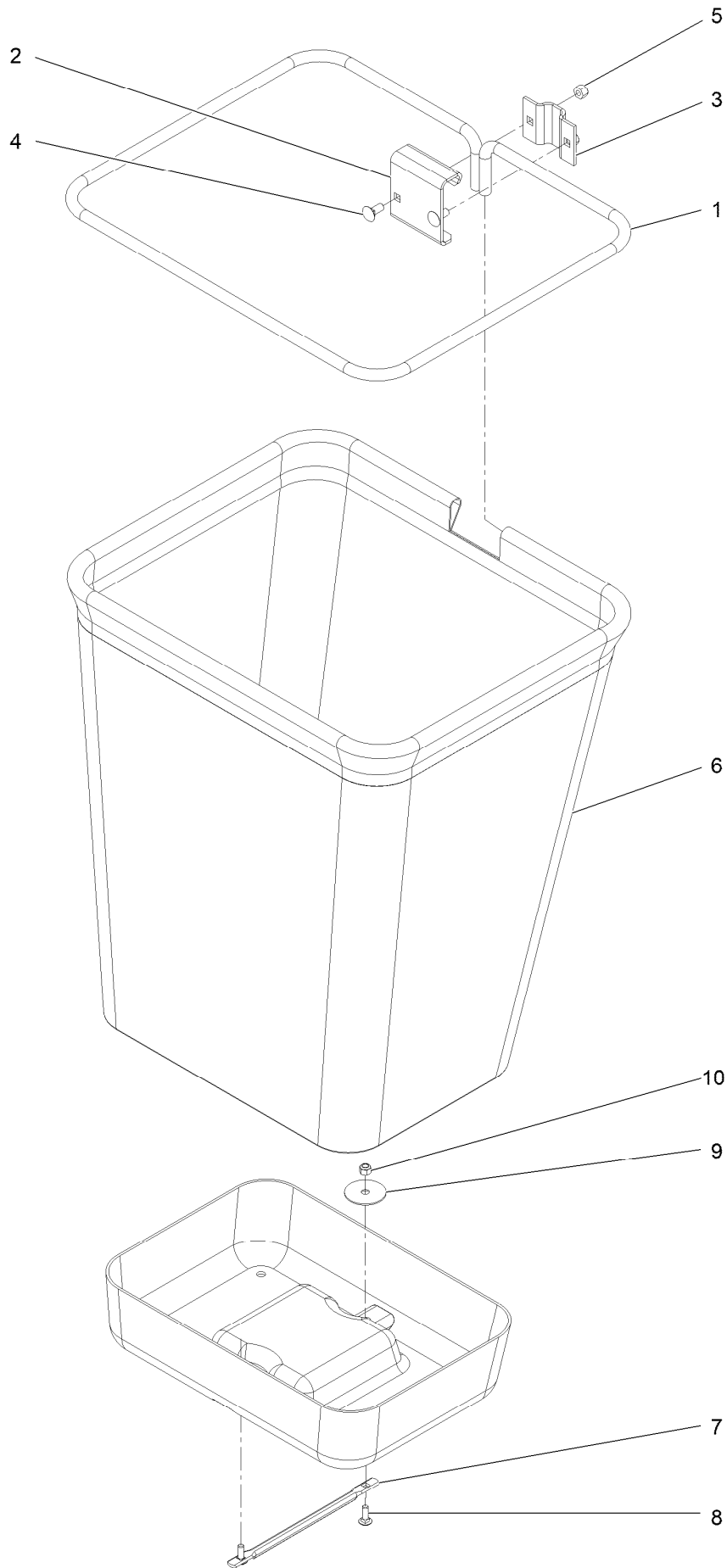
Triple Bagger Assembly No. 145-6974



Triple Bagger Assembly No. 145-6974 (continued)

<i>Ref.</i>	<i>Part Number</i>	<i>Qty.</i>	<i>Description</i>	<i>Ref.</i>	<i>Part Number</i>	<i>Qty.</i>	<i>Description</i>
1	109-8706-03	1	Frame-Triple Bagger	14	3256-2	4	Washer-Flat
2	103-5166	2	Bag Support ASM	15	1-633545	2	Spacer
2:1	1-523420	1	Bumper	16	321-6	2	Screw-HH
2:2	103-5124-03	1	Support-Bag	17	3296-42	4	Nut-Lock, NI
2:3	1-653404	1	Catch	18	103-0440	1	Screen-Bagger
2:4	3290-148	2	Nut-HF	19	103-0380-03	1	Support-Screen
2:5	32128-33	1	Nut-HF	20	103-0379	2	Bracket-Mount
2:6	3290-500	2	Screw-PPH	21	103-0376	2	Plate-Latch, Reinforcement
3	109-8351-03	2	Hinge	22	1-653403	2	Latch
4	112-1760	1	Hood ASM	23	321-11	2	Screw-HH
5	103-0382-03	1	Stiffener-Bagger, Top	24	3274-55	8	Screw-HSBH
6	103-0451	1	Seal-Hinge	25	103-0439	1	Seal-Tube
7	103-0452-03	1	Plate-Backing	26	103-0378	2	Clamp-Seal
8	114439	49	Rivet-Blind	27	3256-61	23	Washer-Flat
9	1-803075	6	Screw-Head, Truss	28	3250-27	8	Screw-PPH
10	3296-2	14	Nut-Lock, NI	29	1-513658	2	Bumper
11	321-4	10	Screw-HH	30	1-653544	4	Spring-Extension
12	32128-33	10	Nut-HF	33	67-7310	1	Decal
13	103-0391	2	Reinforcement-Hood, Bagger				

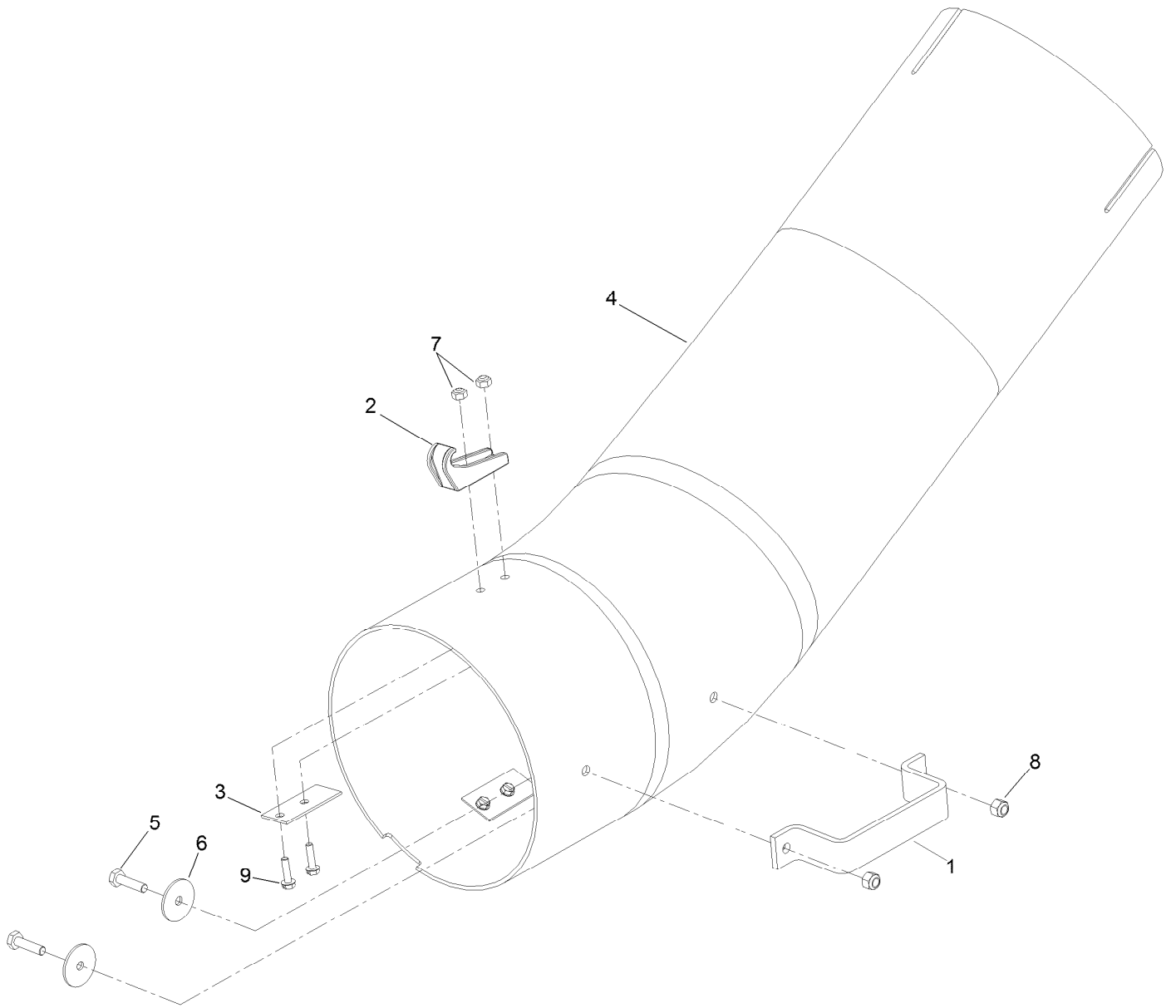
Bag Assembly No. 161-6779



Bag Assembly No. 161-6779 (continued)

<i>Ref.</i>	<i>Part Number</i>	<i>Qty.</i>	<i>Description</i>	<i>Ref.</i>	<i>Part Number</i>	<i>Qty.</i>	<i>Description</i>
1	161-6807-03	1	Frame - Bag	6	161-6778	1	Bag ASM
2	161-6808-03	1	Hanger-Bag	7	161-6810	1	Handle-Bag
3	161-6809-03	1	Clamp	8	3229-1	2	Bolt-Carriage 1/4-20 X 3/4
4	3230-1	2	Bolt-Carriage 5/16-18 X 3/4	9	1-653036	2	Washer
5	3296-29	2	Nut-Nyloc 5/16-18	10	3296-42	2	Nut-Nyloc 1/4-20

Lower Tube Assembly No. 109-1973



Lower Tube Assembly No. 109-1973 (continued)

<i>Ref.</i>	<i>Part Number</i>	<i>Qty.</i>	<i>Description</i>	<i>Ref.</i>	<i>Part Number</i>	<i>Qty.</i>	<i>Description</i>
1	1-353005-03	1	Handle	6	3256-55	2	Washer-Flat
2	103-2897	2	Latch-Catch ●	7	3296-2	4	Nut-Lock, NI
3	103-3079	2	Plate-Backing	8	3296-42	2	Nut-Lock, NI
4	109-1974	1	Tube-Lower	9	32105-13	4	Screw-HWH
5	321-6	2	Screw-HH				

● Kit No. 103-4143 - Contains catch, rubber latch, and mounting hardware

Notes:

Notes:



Count on it.