

# Tire Chains for 23in x 9-1/2in Wheel

## Riding Products

Model No. 82531

## Installation Instructions

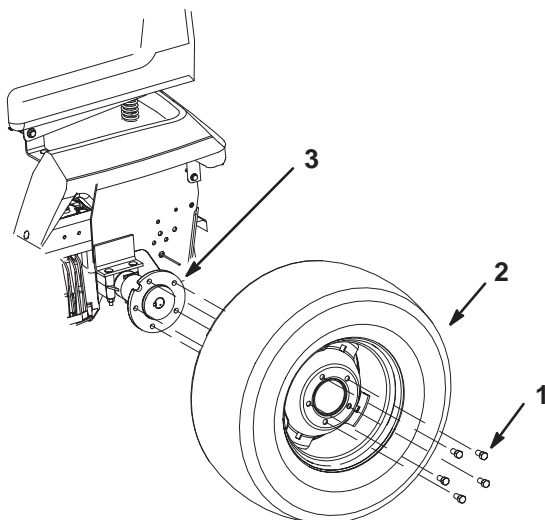
### Loose Parts

**Note:** Use the chart below to identify parts used for assembly.

DESCRIPTION	QTY.	USE
Spacer	2	Install the spacer

### Installing the Spacer

1. Loosen the rear wheel nuts or bolts on both back tires.
2. Raise up the back of the mower and support it with jack stands.
3. Remove the rear wheel nuts or bolts and tires (Fig. 1).



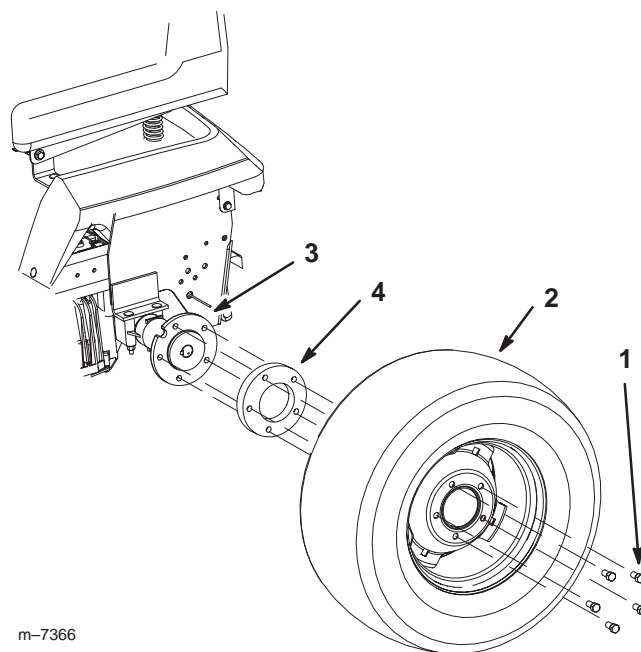
m-7288

**Figure 1**

1. Rear wheel bolts or nuts
2. Rear wheel
3. Wheel hub

4. Install the spacer between the wheel hub and the tire with the previously removed wheel nuts or bolts (Fig. 2).

5. Remove the jack stands.



m-7366

**Figure 2**

1. Rear wheel bolts or nuts
2. Rear wheel
3. Wheel hub
4. Spacer