



# 417XT and 419XT Wheel Horse® Garden Tractor

Model No. 72211—240000001 and Up

Model No. 72212—240000001 and Up

Form No. 3351-401

## Addendum

**Important** The following instructions are updates for the Setup instructions in the tractor *Operator's Manual*.

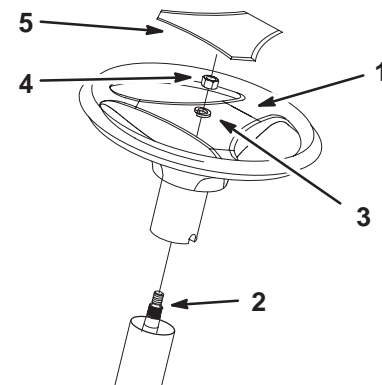
## Loose Parts

**Note:** Use the chart below to verify all parts have been shipped.

Description	Qty.	Use
Steering Wheel	1	Install the steering wheel
Lock Washer, 1/2 inch	1	
Nut, 1/2 inch	1	
Logo Cover	1	
Seat	1	Install the seat
Spacer, small inside diameter	2	
Spacer, large inside diameter	2	
Shoulder Bolt	2	
Knob	2	
Flat Washer, 11/32 inch	2	

## Installing the Steering Wheel

1. Position the front wheels straight ahead.
2. Remove the logo cover by releasing the 3 latches from the back side with a screwdriver.
3. Line up the center spoke toward the seat and position the steering wheel onto the shaft spline (Fig. 1).
4. Secure the steering wheel with a lockwasher (1/2 inch) and nut (1/2 inch) (Fig. 1).
5. Torque the steering wheel nut to 50 ft-lb (37 N·m).
6. Snap the logo cover into place (Fig. 1).



**Figure 1**

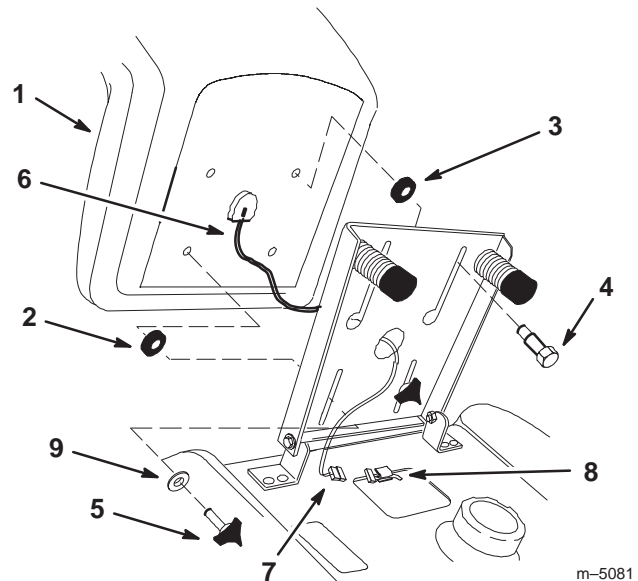
- |                          |                  |
|--------------------------|------------------|
| 1. Center spoke          | 4. Nut, 1/2 inch |
| 2. Shaft spline          | 5. Logo cover    |
| 3. Lock washer, 1/2 inch |                  |

2307

## Installing the Seat

1. Install the large inside diameter spacer and the 2 shoulder bolts into the rear holes of the seat (Fig. 2).

2. Position the seat onto the seat base by inserting the 2 shoulder bolts through the key hole openings at the end of both slots (Fig. 2).
3. Locate the small inside diameter spacer between the seat and the seat base, thread the 2 knobs and 2 flat washers (11/32 inch) into the front holes in the seat (Fig. 2). Adjust the seat and tighten the knobs.
4. Route the seat switch wire and connector through the center opening in the seat base. Push the seat switch connector fully into the wire harness connector (Fig. 2).
5. Secure the seat switch wire cable to the fender opening (Fig. 2).



**Figure 2**

- |                    |                            |
|--------------------|----------------------------|
| 1. Seat            | 6. Wire and connector      |
| 2. Spacer-small ID | 7. Wire harness connector  |
| 3. Spacer-large ID | 8. Wire clip               |
| 4. Shoulder bolt   | 9. Flat washer, 11/32 inch |
| 5. Knob            |                            |