



**Count on it.**

**Parts Catalog**

**Rear Roller Brush Kit**

**Reelmaster® 3575, 5510, 5610 and 5010-H  
Series Cutting Units with 7in Reel**

**Model No. 03408**



# Ordering Replacement Parts

To order replacement parts, please supply the part number, the quantity, and the description of each part desired.

## Understanding Reference Numbers

Each identified part in an illustration has a reference number. The reference number for a part also appears in the parts list, along with other information about the part.

This catalog uses two special reference number formats, one to indicate parts in a service assembly and another to indicate the quantity of a given part in an illustration.

## Service Assembly Reference Numbers

Parts in service assemblies have reference numbers in the form a:b. The a represents the reference number of the entire service assembly and the b represents a sequential number unique to each part within the service assembly.

For example, a wheel assembly might be identified by reference number 6, the tire by 6:1, the valve by 6:2, and the wheel by 6:3. When you order the assembly identified by reference number 6, you receive all parts identified by reference numbers 6:1, 6:2, and 6:3. However, you may also order any part individually. Reference numbers of this type appear in illustration and in parts lists.

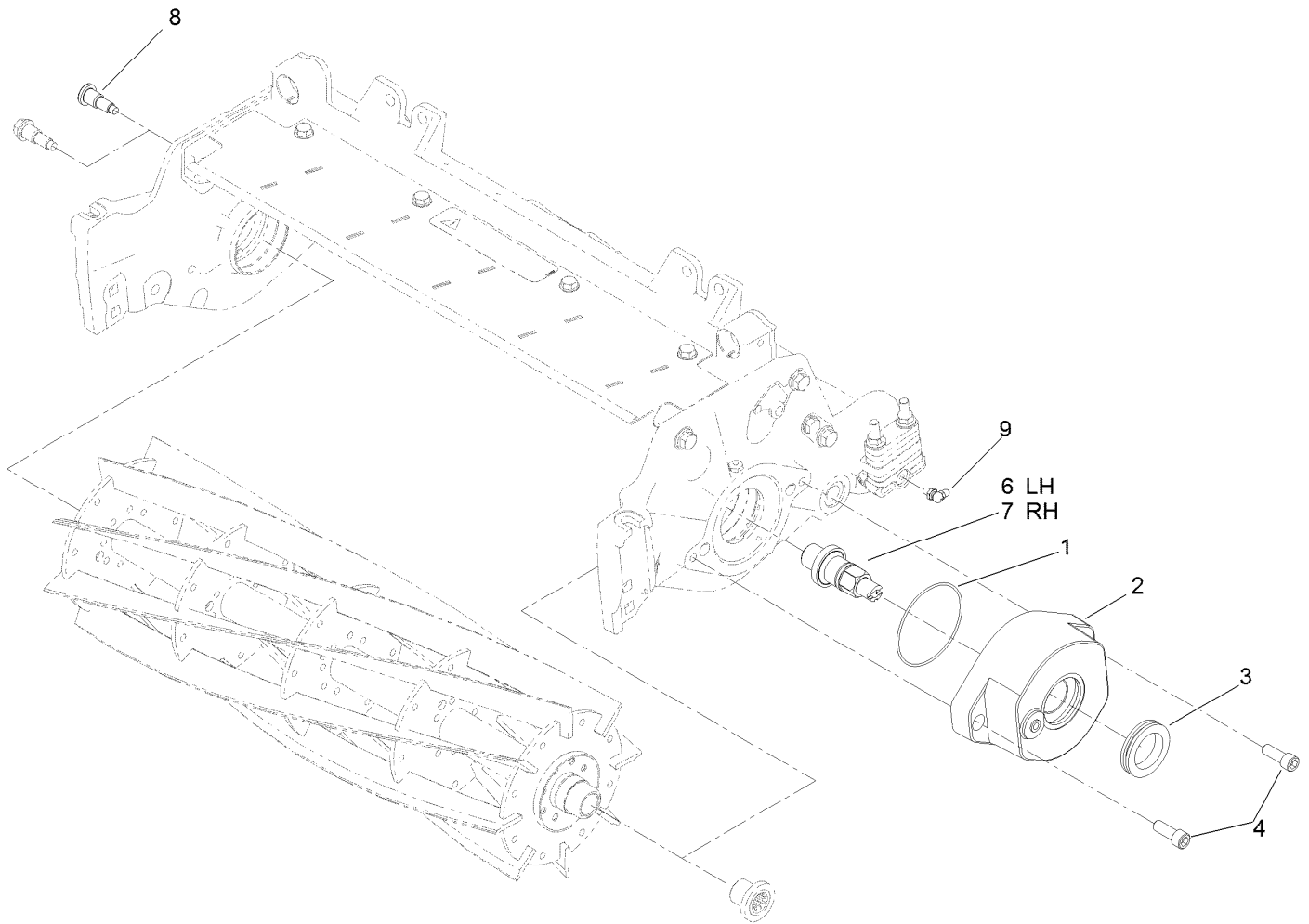
## Reference Numbers Indicating Quantity

In an illustration, if a reference number indicates more than one part, the reference number has the form nX y. The n represents the quantity of the part, the X is the multiplication symbol, and the y represents the reference number.

For example, in an illustration, the reference number 2X 37 means that two of the parts identified by reference number 37 are indicated.

# Contents

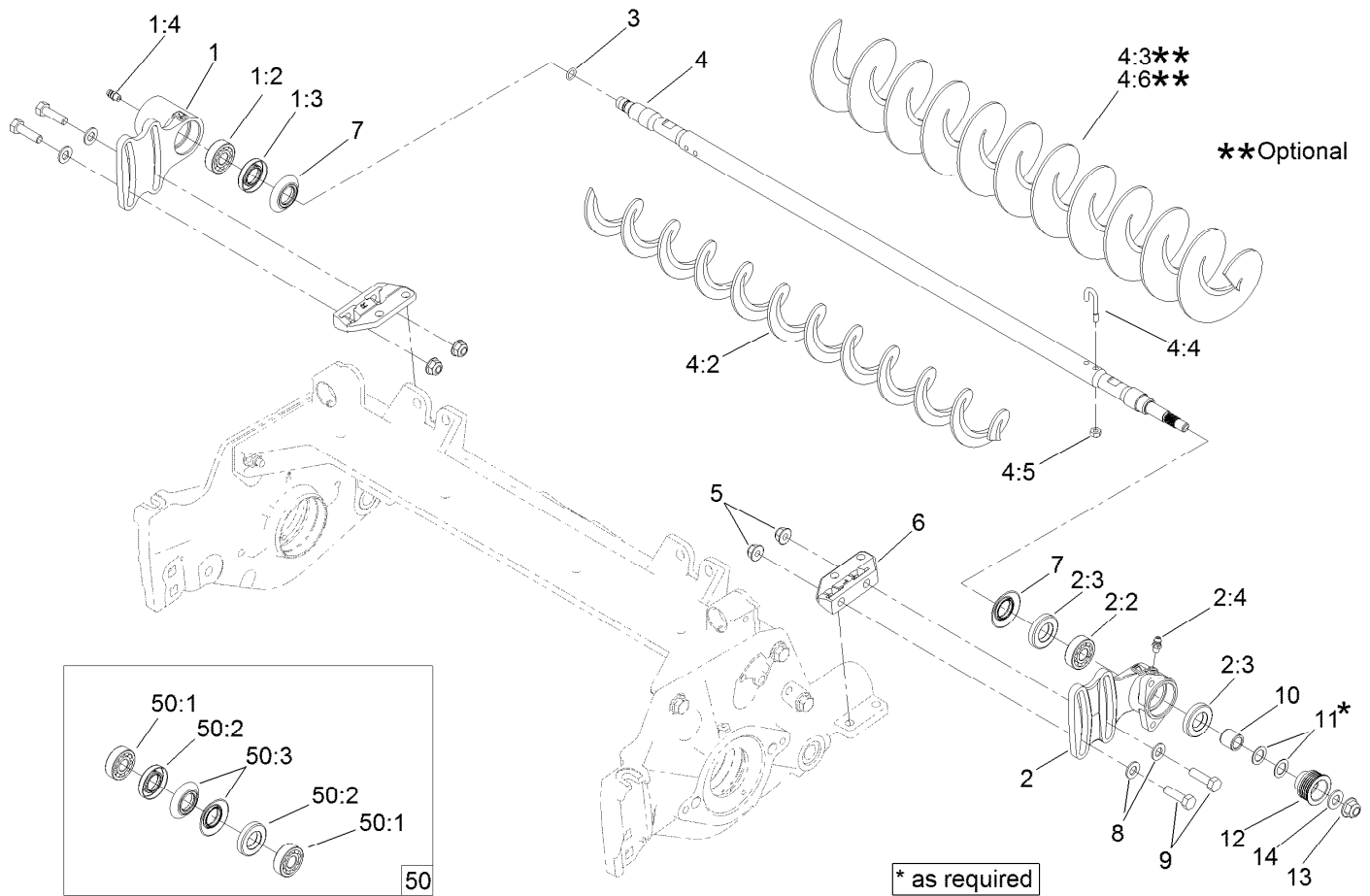
Drive Assembly ..... 4  
Roller Brush Assembly ..... 5  
Plate Assembly ..... 6



## Drive Assembly

Ref.	Part Number	Qty.	Description
1	112-6967	5	O-Ring
2	108-4203	5	Housing-Bearing, Drive
3	240-7	5	Grommet-Rubber
4	3274-7	10	Screw-HSH
6	125-2788	3	Shaft-Drive, LH
7	125-2787	2	Shaft-Drive, RH
8	127-7122	5	Bolt-Shoulder, Flange Hex Socket ●
9	104-1843	5	Fitting-Grease, 90 DEG

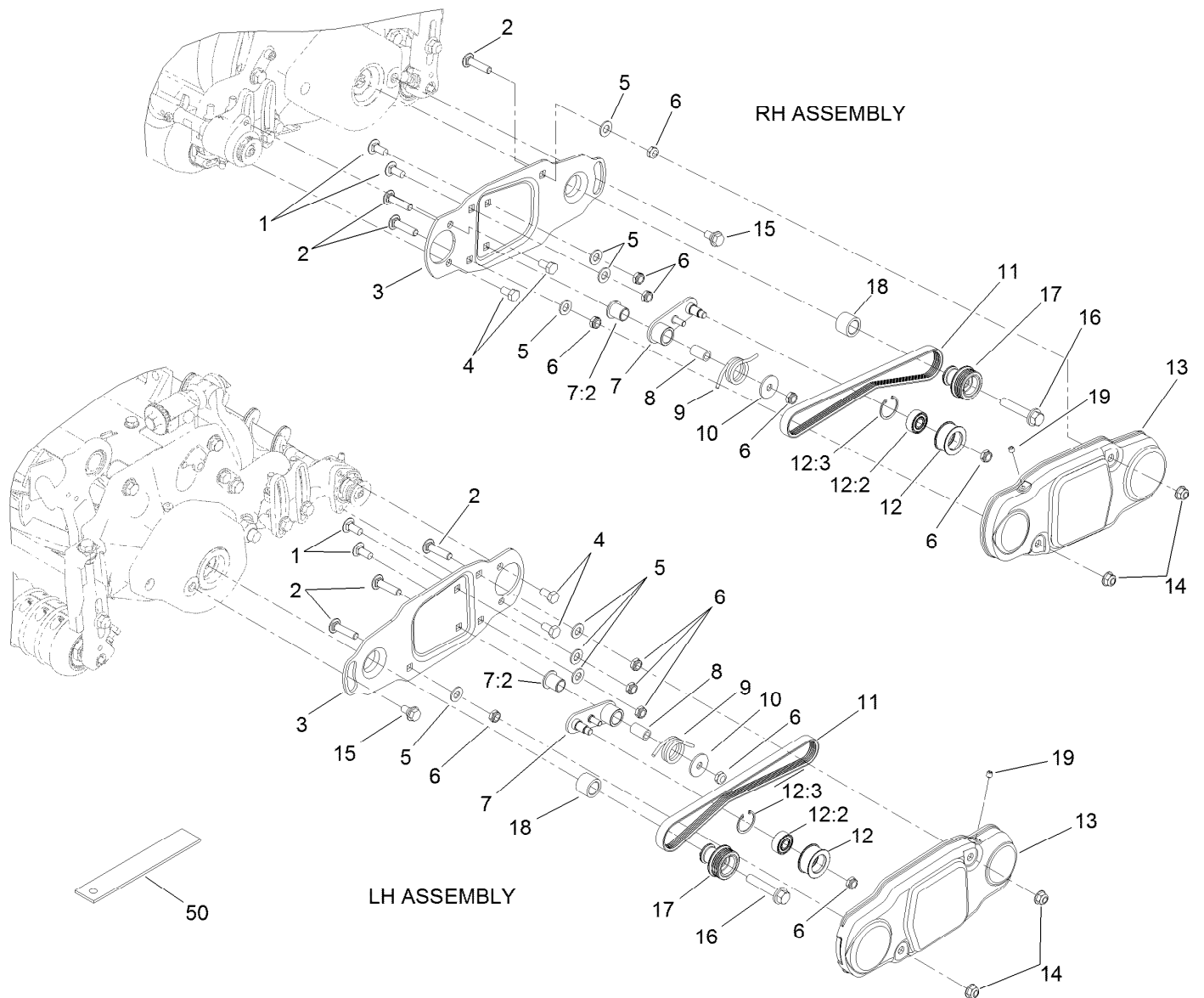
● Optional Part for Pre2025 RM5010-H Only



## Roller Brush Assembly

Ref.	Part Number	Qty.	Description	Ref.	Part Number	Qty.	Description
1	127-7134	5	Non Driven Bearing Housing ASM	4:6	137-0842	1	HD Brush-Rear Roller, 22In ●
1:2	95-0707	1	Bearing-Aligning, Self	5	104-8300	20	Nut-HF, NI
1:3	106-8530	1	Seal-Grease	6	108-4480	10	Bracket-Mounting
1:4	302-5	1	Fitting-Grease	7	108-4172	10	Seal-Excluder
2	127-7138	5	Driven Bearing Housing ASM	8	94-6936	20	Washer-Hard
2:2	95-0707	1	Bearing-Aligning, Self	9	322-16	20	Screw-HH
2:3	106-8530	2	Seal-Grease	10	127-7139	5	Spacer-Pulley, Driven
2:4	302-5	1	Fitting-Grease	11	112-6957	10	Washer-Hardened
3	107-8844	5	O-Ring	12	115-0821	5	Pulley-Driven, RRB (5-Rib)
4	127-7146	5	22 Inch Roller Brush ASM	13	104-8301	5	Nut-HF, NI
4:2	108-4193	1	Brush-Roller	14	48-9220	1	Washer-Flat
4:3	110-1740	1	Brush-Roller (22In High HOC) ●	50	131-3233	1	Groomer/RRB Seal Kit ●
4:4	105-9632	2	Bolt-J	50:1	95-0707	2	Bearing-Aligning, Self
4:5	3296-2	2	Nut-Lock, NI	50:2	106-8530	3	Seal-Grease
				50:3	108-4172	2	Seal-Excluder

● Optional Equipment



## Plate Assembly

Ref.	Part Number	Qty.	Description	Ref.	Part Number	Qty.	Description
1	3230-23	10	Bolt-CARR	12	114-9397	5	Idler Pulley ASM
2	112-6950	15	Screw-CARR	12:2	110-1701	1	Bearing
3	115-0814-03	5	Plate-Brush, 7 Inch	12:3	32151-60	1	Ring-Snap
4	322-1	10	Screw-HH	13	115-0831-03	5	Plate-Cover, 7 Inch (RRB)
5	3256-45	20	Washer-Flat	14	104-8300	10	Nut-HF, NI
6	3296-47	30	Nut-Lock,NI	15	27-0411	5	Screw-Shoulder
7	115-0834	5	Idler Arm ASM	16	66-9302	5	Screw-HHF Lock
7:2	125-8775	1	Bushing-Flange	17	115-0832	5	Pulley-Driver
8	115-0826	5	Spacer-Idler	18	108-4477	5	Spacer
9	115-0839	5	Spring-Idler	19	108-0989	5	Screw-Set
10	5-4460	5	Washer-Pivot	50	114-5446	1	Tool-Alignment ●
11	115-0833	5	Belt-Brush, 7 Inch				

● Optional Equipment

**Notes:**



**Count on it.**