



Count on it.

Parts Catalog

Aerator 686

Model No. 44856—Serial No. 412800000 and Up



Ordering Replacement Parts

To order replacement parts, please supply the part number, the quantity, and the description of each part desired.

Understanding Reference Numbers

Each identified part in an illustration has a reference number. The reference number for a part also appears in the parts list, along with other information about the part.

This catalog uses two special reference number formats, one to indicate parts in a service assembly and another to indicate the quantity of a given part in an illustration.

Service Assembly Reference Numbers

Parts in service assemblies have reference numbers in the form a:b. The a represents the reference number of the entire service assembly and the b represents a sequential number unique to each part within the service assembly.

For example, a wheel assembly might be identified by reference number 6, the tire by 6:1, the valve by 6:2, and the wheel by 6:3. When you order the assembly identified by reference number 6, you receive all parts identified by reference numbers 6:1, 6:2, and 6:3. However, you may also order any part individually. Reference numbers of this type appear in illustration and in parts lists.

Reference Numbers Indicating Quantity

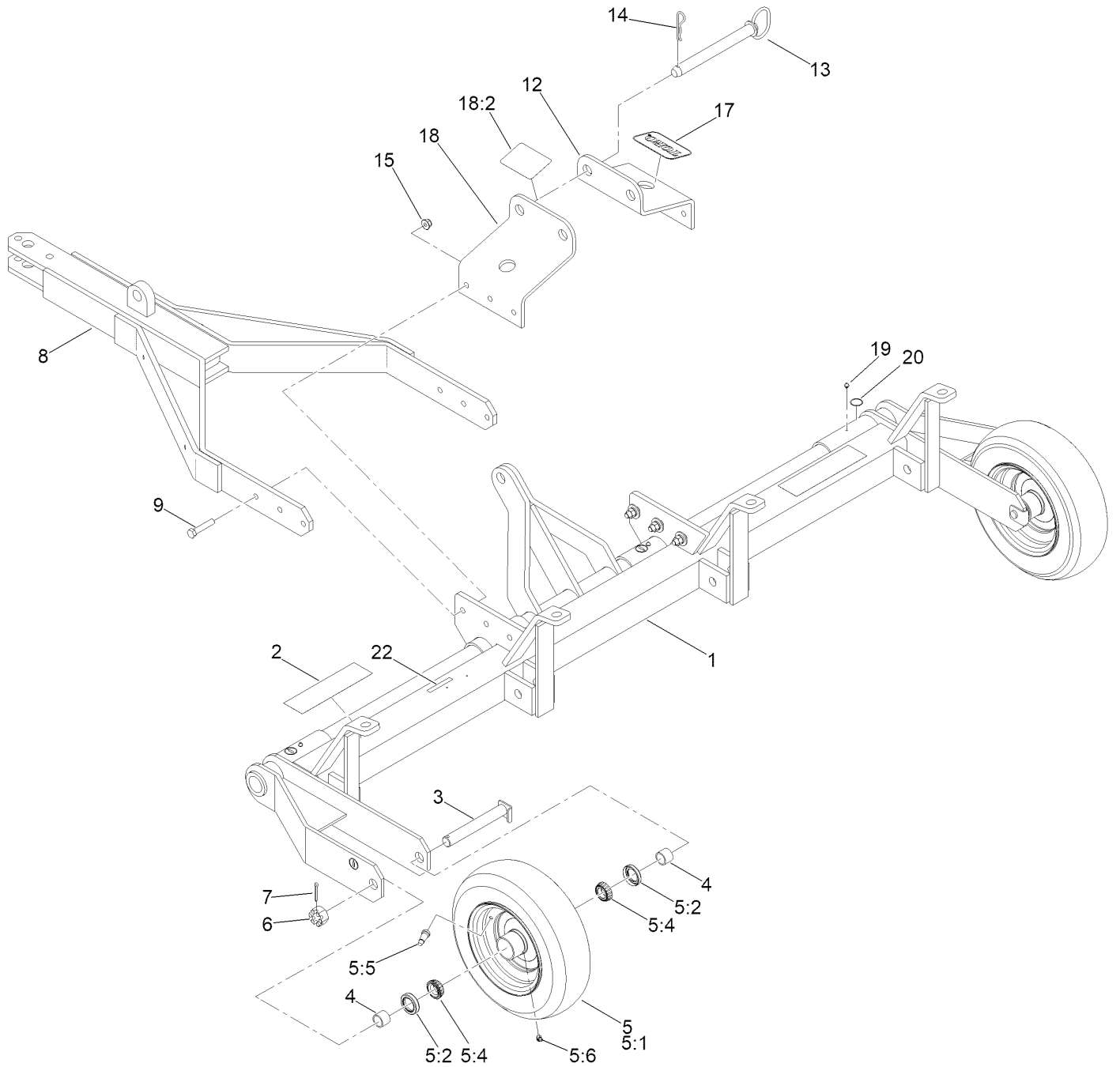
In an illustration, if a reference number indicates more than one part, the reference number has the form nX y. The n represents the quantity of the part, the X is the multiplication symbol, and the y represents the reference number.

For example, in an illustration, the reference number 2X 37 means that two of the parts identified by reference number 37 are indicated.

Contents

Pull Frame Assembly 4
Hand Pump and Cylinder Assembly 6
Aeration Head Assembly..... 8
Aerator Wheel Assembly..... 10

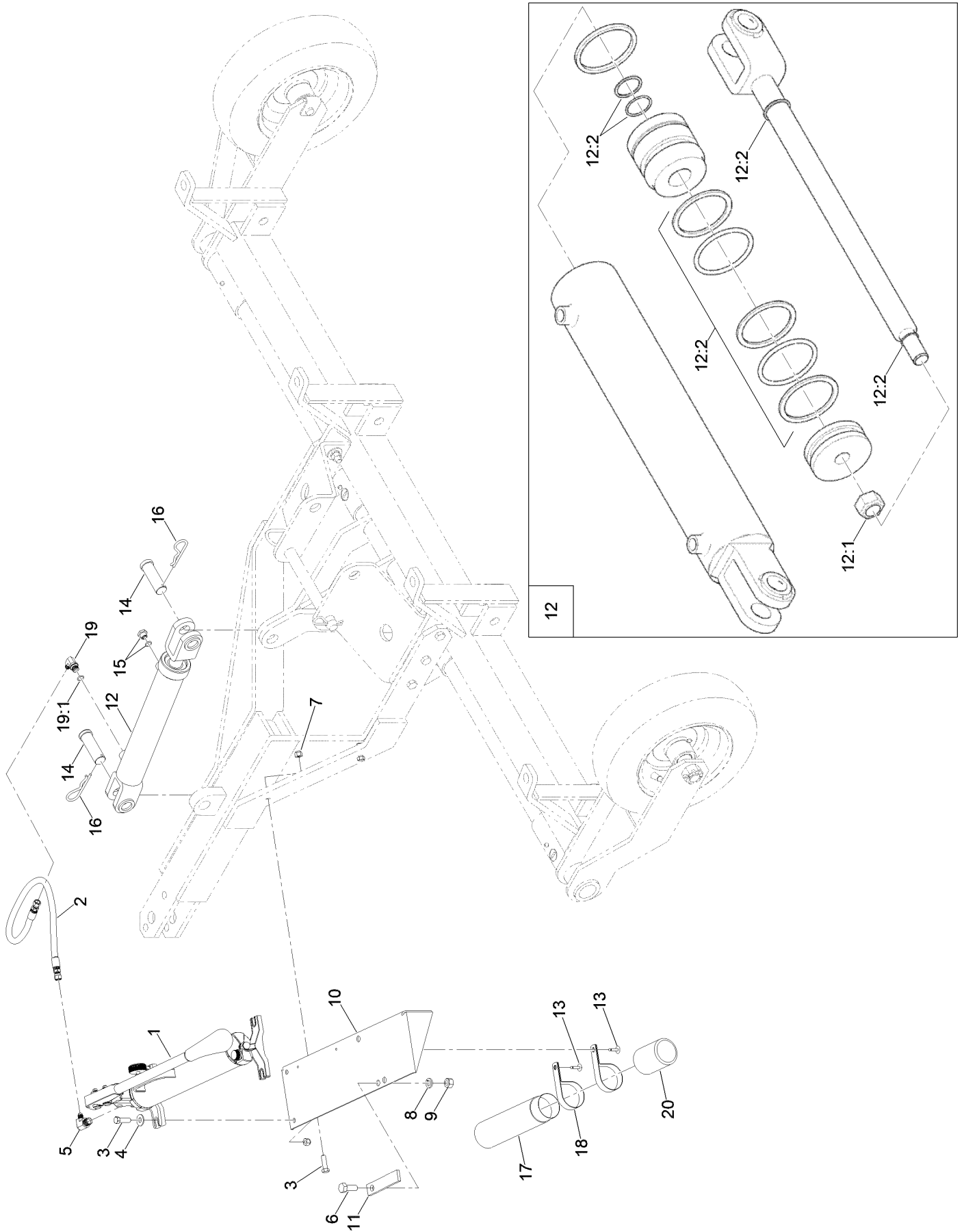
Pull Frame Assembly



Pull Frame Assembly (continued)

<i>Ref.</i>	<i>Part Number</i>	<i>Qty.</i>	<i>Description</i>	<i>Ref.</i>	<i>Part Number</i>	<i>Qty.</i>	<i>Description</i>
1	68-605-3053-01	1	Frame-Main	8	68-605-3102-01	1	Tongue
2	01-506-0680	2	Decal	9	325-9	6	Screw-HH
3	68-605-3701	2	Shaft-Axle	12	68-604-3532-01	1	Bar-Lock, Transport
4	68-604-3321	4	Spacer-Wheel	13	01-252-0060	1	Pin-Hitch
5	139-8726	2	Tire And Wheel Complete	14	01-159-0060	1	Pin-Hair
5:1	139-8725	1	Tire	15	99-5107	6	Nut-HF Nylock
5:2	93-9807	2	Seal-Oil	17	67-1300	1	Decal
5:4	254-94	2	Bearing-Cone, Tapered	18	106-0268	1	Transport Lock Bar ASM
5:5	232-35	1	Valve Stem And Cap ASM	18:2	106-0229	1	Decal-Warning
5:6	302-11	1	Fitting-Lube, 45 DEG	19	302-63	4	Fitting-Grease, Zerk
6	01-190-1614	2	Nut-Hex, Slotted	20	58-6520	6	Decal-Grease
7	3272-23	2	Pin-Cotter	22	133-8061	1	Decal-Warning

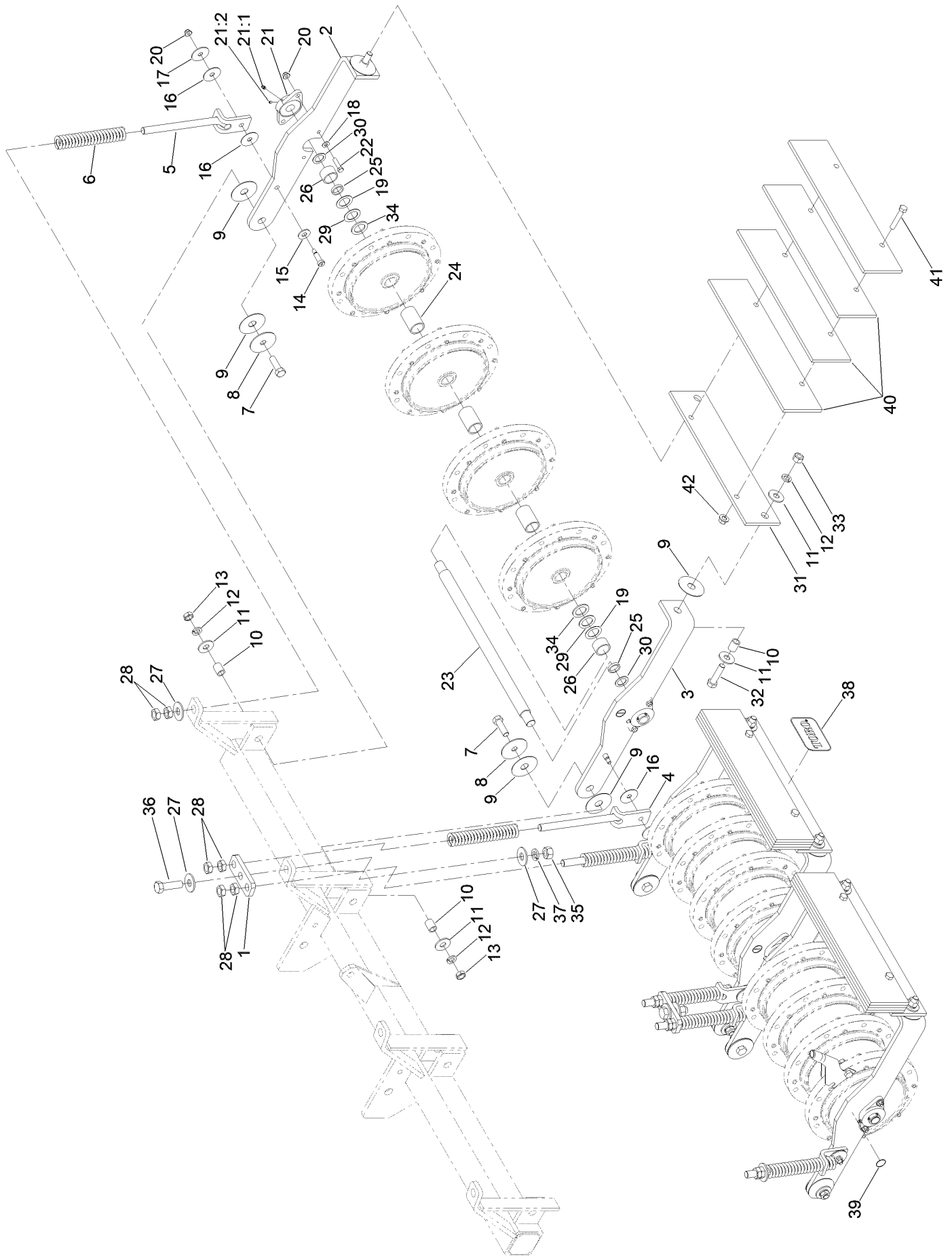
Hand Pump and Cylinder Assembly



Hand Pump and Cylinder Assembly (continued)

<i>Ref.</i>	<i>Part Number</i>	<i>Qty.</i>	<i>Description</i>	<i>Ref.</i>	<i>Part Number</i>	<i>Qty.</i>	<i>Description</i>
1	01-305-0040	1	Pump-Hand	12:1	22-8560	1	Locknut
2	01-312-0500	1	Hose-HYD	12:2	121-6443	1	Seal Kit
3	323-7	4	Screw-HH	13	01-161-0020	2	Rivet-Pop
4	3256-4	2	Washer-Flat	14	26-8590	2	Pin-Cylinder
5	01-201-0190	1	Fitting-HYD	15	100-9962	1	Fitting-Vent
6	325-5	1	Screw-HH	16	3290-256	2	Pin-Hair
7	3296-39	4	Nut-Lock, NI	17	104-7050	1	Tube-Manual
8	3253-7	1	Washer-Lock	18	2412-133	2	Clamp-R
9	3217-9	1	Nut-HH	19	340-134	1	Fitting-Elbow, 90
10	115-4939-01	1	Mount-Pump	19:1	237-42	1	O-Ring
11	68-604-3511-01	1	Vibration-Strap	20	104-7048	1	Cap-Housing
12	121-6642	1	Hydraulic Cylinder ASM				

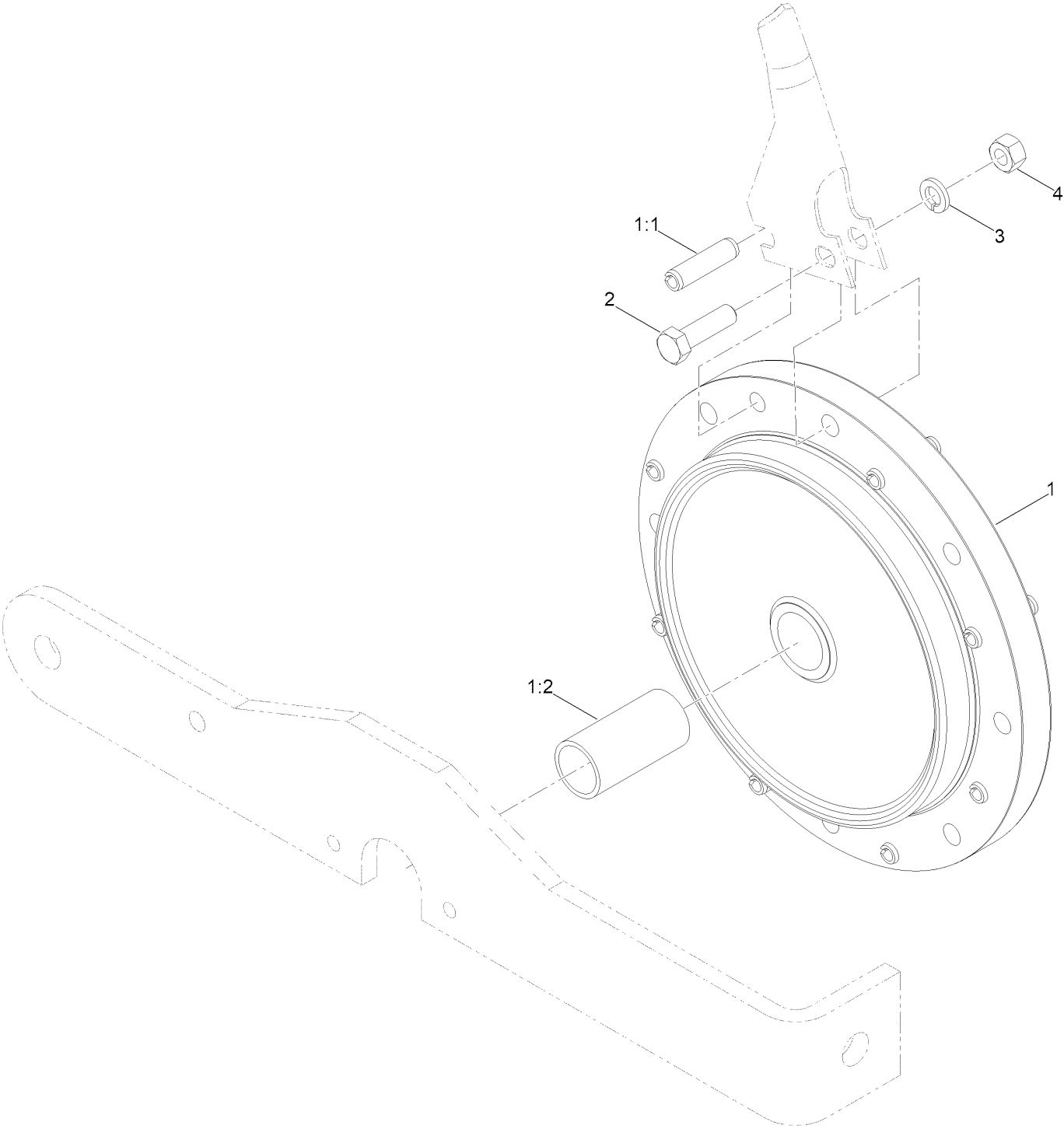
Aeration Head Assembly



Aeration Head Assembly (continued)

<i>Ref.</i>	<i>Part Number</i>	<i>Qty.</i>	<i>Description</i>	<i>Ref.</i>	<i>Part Number</i>	<i>Qty.</i>	<i>Description</i>
1	68-604-3571-01	2	Mount-Spring	21:2	3245-35	2	Screw-Set, HSH
2	95-0082-01	3	Arm-Main, RH	22	323-8	12	Screw-HH
3	95-0081-01	3	Arm-Main, LH	23	68-604-3181	3	Shaft-Aerator
4	105-7893	4	Bracket-Spring, Inner	24	68-604-3421	9	Spacer-Center
5	105-7894	2	Bracket-Spring, Outter	25	68-604-3451	6	Spacer-Inside
6	01-261-0190	6	Spring	26	68-604-3431	6	Spacer-End
7	327-6	6	Screw-HH	27	3256-8	6	Washer-Flat
8	68-604-3481	6	Washer	28	3218-7	12	Nut-Jam
9	68-604-3151	18	Washer-Pivot	29	01-168-2014	6	Bushing
10	01-125-0050	12	Bushing	30	01-168-1614	6	Bushing
11	3256-7	18	Washer-Flat	31	68-604-3171-01	3	Arm-Main, End
12	3253-8	12	Washer-Lock	32	327-7	6	Screw-HH
13	3218-6	6	Nut-Jam	33	3217-11	6	Nut-Hex
14	01-158-0310	6	Bolt-Shoulder, Socket Head	34	01-168-2010	6	Bushing
15	3256-6	6	Washer-Flat	35	3217-12	2	Nut-Hex
16	13-404-0221	12	Washer-Pivot	36	328-2	2	Screw-HH
17	68-604-3491	6	Washer	37	3253-9	2	Washer-Lock
18	3256-24	12	Washer-Plain	38	67-1300	1	Decal
19	01-168-2018	6	Bushing	39	58-6520	6	Decal-Grease
20	104-8301	18	Nut-HF, NI	40	136-3875-01	12	Bar-Weight
21	106-0289	6	Bearing-Flange	41	325-11	6	Screw-HH
21:1	302-5	1	Fitting-Grease	42	99-5107	6	Nut-HF Nylock

Aerator Wheel Assembly



Aerator Wheel Assembly (continued)

<i>Ref.</i>	<i>Part Number</i>	<i>Qty.</i>	<i>Description</i>	<i>Ref.</i>	<i>Part Number</i>	<i>Qty.</i>	<i>Description</i>
1	44-004-0262	12	Aerator Wheel ASM	2	325-7	96	Screw-HH
1:1	32121-122	8	Pin-Roll	3	3253-7	96	Washer-Lock
1:2	01-126-0030	1	Bushing	4	3217-9	96	Nut-HH



Count on it.