



Signal Light Kit

Workman® 3000 Series w/Serial Numbers 240000001 & Up

Part No. 107-7985

Form No. 3351-482

Installation Instructions

Note: The vehicle must be equipped with an Accessory Wire Harness Kit, Part No. 107-7987, before the Signal Light Kit can be installed.

1. Raise the bed and install the safety support on the fully extended lift cylinder rod (if so equipped).
2. Stop the engine, set the parking brake, and remove the key from the ignition switch.
3. Remove the positive (+) battery cable from the battery.
4. Remove the (6) screws and nuts securing the bumper to the vehicle frame and remove the bumper.
5. Remove the (7) screws securing the front hood to the vehicle frame and remove the hood.
6. Plug the spade terminal of the green (signal light) and the pink (warning light) wires from the Accessory Wire Harness Kit into the new fuse block.
7. Affix the fuse decals to the corresponding circuits on the vehicle fuse block decal (Fig. 1).

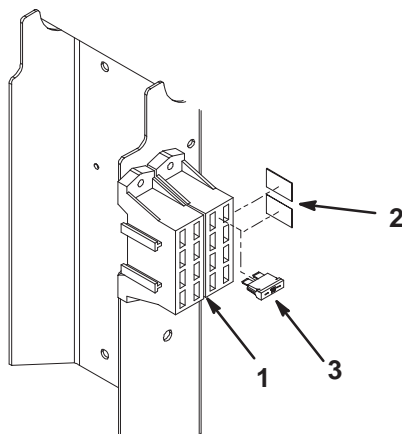


Figure 1

1. Fuse block
2. Fuse decals
3. 15 amp fuse

8. Remove one of the plugs from the switch mounting holes in the dash (Fig. 2).

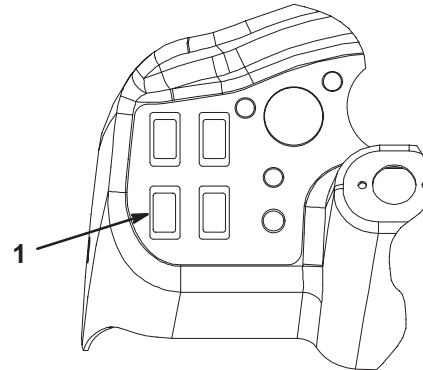


Figure 2

1. Plug

9. Affix the warning light switch decal to the right of the switch mounting hole in the dash (Fig. 3).

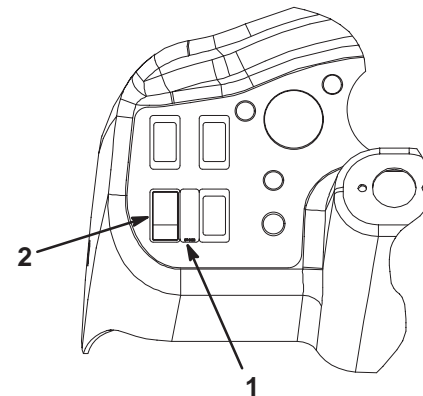


Figure 3

1. Decal
2. Switch

10. Insert the warning switch into the hole in the dash (Fig. 3).

11. Mount the signal controller to the signal controller bracket with the 2 screws and anchors supplied with controller (Fig. 4). Discard the steel band and any unused hardware supplied with the controller.

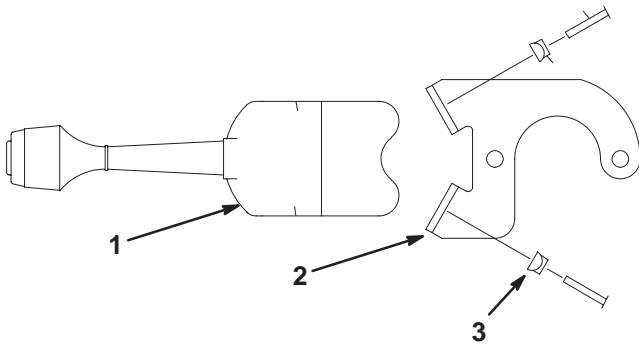


Figure 4

- 1. Signal controller
- 2. Controller bracket
- 3. Anchor (2)

12. Remove and discard the two screws securing the dash to the steering column (Fig. 5).

Note: The steering wheel may be removed to ease the removal of the screws and installation of signal controller.

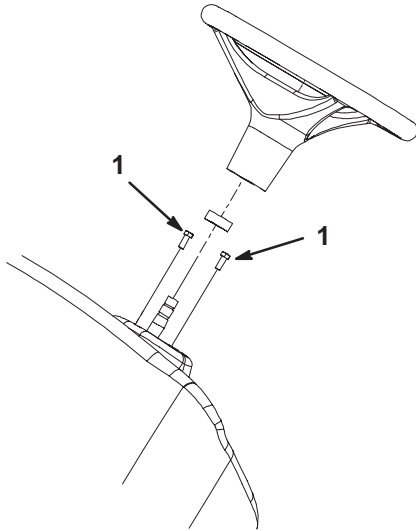


Figure 5

- 1. Dash mounting screws (3)

13. Mount the signal controller bracket to the steering column with two M6 x 16 screws (Fig. 6).

14. Route the controller wire harness/relay under the dash toward the left side of the machine.

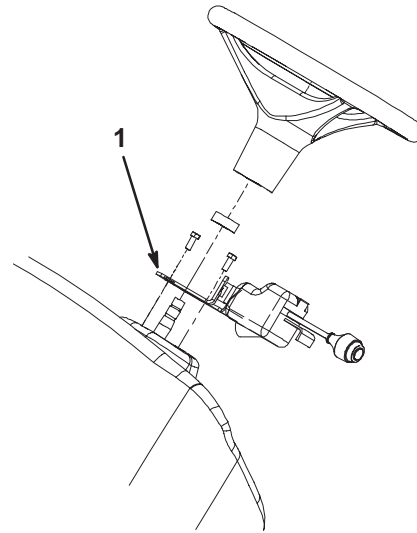


Figure 6

- 1. Signal controller & bracket

15. Under the left side of the dash, locate the two holes in the left inside of the dash support tube (Fig. 7). Using the top hole, mount the signal relay to the tube with a #10–24 x 1/2" lg. self tapping screw (Fig. 7).

Note: If the mounting holes are not present in the dash support tube, drill two .166" dia. holes at the approximate locations shown in figure 7.

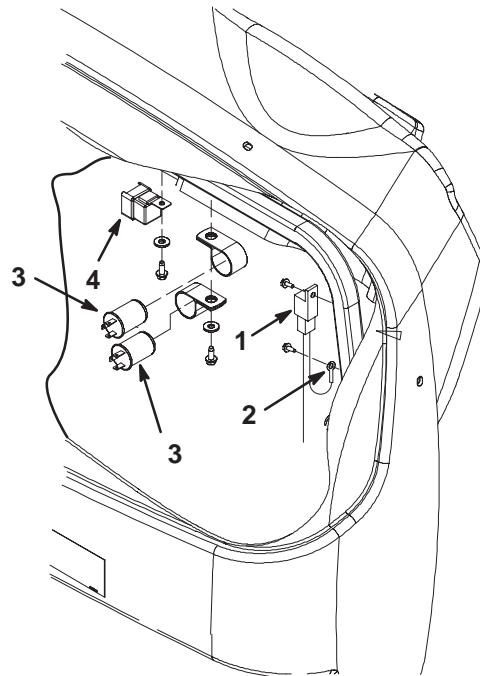


Figure 7

- 1. Signal relay
- 2. Signal ground wire & harness ground wire
- 3. Flasher (2)
- 4. Power relay

16. Using the bottom hole, mount the signal relay ground wire ring terminal and the black ground wire from the accessory wire harness to the tube with a #10-24 x 1/2" lg. self tapping screw (Fig. 7).

17. Locate the two holes in the underside of the dash support tube (Fig. 7). Mount the light relay and the two flashers to the tube with two 1/4-20 x 5/8" lg. self tapping screws and washers (Fig. 7).

Note: If the mounting holes in the dash support tube are too large, drill two .218" dia. holes at the approximate locations shown in figure 7.

- 18. Unplug the connector from the head light switch.
- 19. Plug the blue and white wires into the headlight switch connector at locations shown in figure 8.
- 20. Plug the connector back into the head light switch.

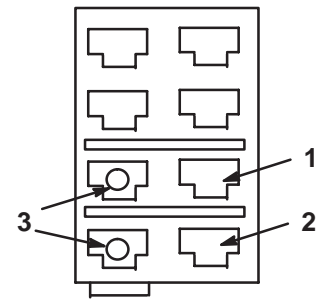


Figure 8

- 1. White wire here
- 2. Blue wire here
- 3. Existing wire connections

21. Using the dimensions shown in Figure 9, locate, mark, and drill (4) .218" dia. holes and a 7/8 x 1-1/2 inch slot in the front hood, just below one of the the headlights.

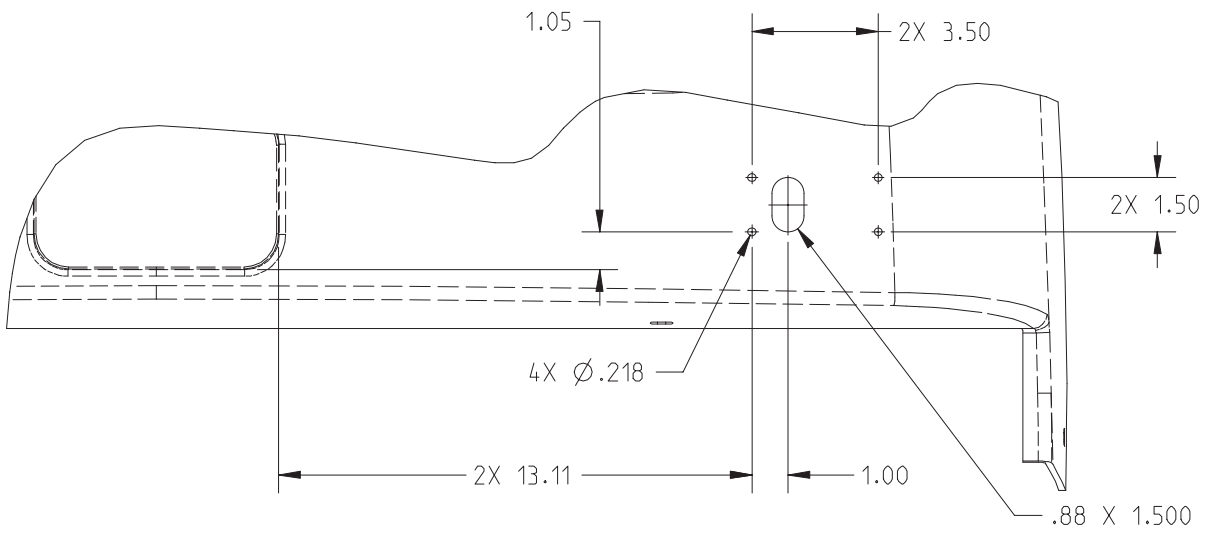


Figure 9

- Remove 2 screws that secure the turn signal lens to its backing plate (Fig. 10).

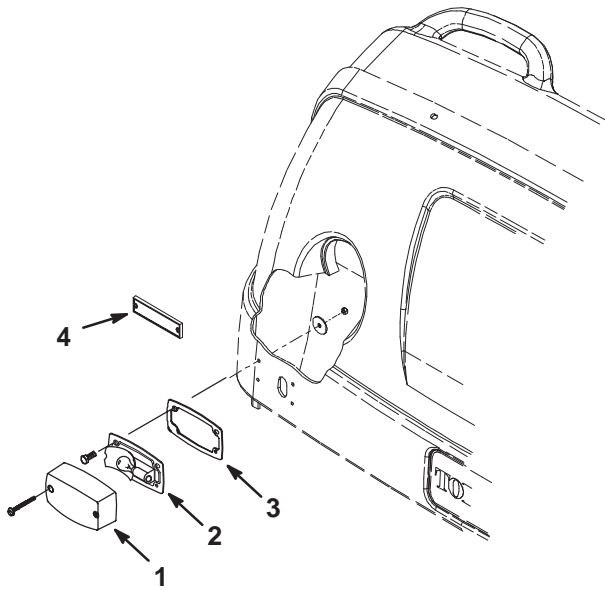


Figure 10

- | | |
|---------------------|--------------|
| 1. Turn signal lens | 3. Gasket |
| 2. Backing plate | 4. Reflector |

- Mount the backing plate, gasket, and ring terminal wire (ground wire) to the hood with (4) #10—24 x 1/2" lg. machine screws, washers and nuts as shown in Figure 10.

Note: Position the wire connector through the slot in the hood.

- Remove the backing from the reflector and affix it to the hood, between the turn signal and the headlight (Fig. 10).
- Repeat this procedure for the other turn signal and the reflector.
- Plug the connector (green and yellow wires) at the end of the wire harness into the signal flasher.
- Plug the orange and yellow wire harness connector into the warning light flasher.
- Plug the next wire harness connector into the relay.
- Plug the turn signal wire harness connectors into the appropriate turn signal controller connectors.
- Remove the cap screw and the nut that secures the vehicle ground wires to the frame.
- Secure the ring terminal ground (black) wire from the light kit wire harness and vehicle wires to the frame with the cap screw and nut that you previously removed.

- Plug the grey/black and white wire connectors into the brown and white wire connectors from the vehicle wire harness located by the fuse block.
- Reinstall the hood and bumper to the frame with the fasteners previously removed.
- Plug the turn signal light connectors into the harness connectors.
- Loosely mount a tail light (single red lens) to the outside hole of each ROPS light channel with a 1/2—20 locknut and flat washer. Insert the forked ground wire terminal, from the wiring harness, under the washer and tighten locknut.

Note: Face the lights to the rear (Fig. 11).

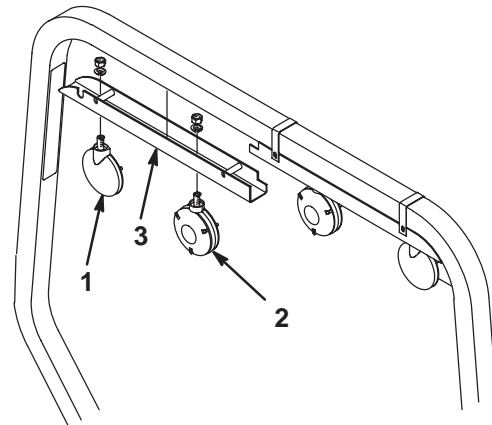


Figure 11

- | | |
|----------------------------|------------------|
| 1. Tail light (red lens) | 3. Light channel |
| 2. Tail light (amber lens) | |

- Loosely mount a warning light (double amber lens) to the inside hole of each ROPS light channel with a 1/2—20 locknut and a flat washer. Insert the forked ground wire terminal, from the wiring harness, under the washer and tighten locknut.
 - Plug the ROPS wire harness connectors into the appropriate light connectors.
- Note:** If you are mounting a work light kit, follow the instructions supplied with the kit before installing the light channels.
- Mount the light channels to the ROPS as instructed in the accessory wire harness kit installation instructions.
 - Route the main harness of the light kit rearward, along the left frame channel to the vehicle rear cross tube.
 - Unplug the vehicle wire harness from the left tail light (Fig. 12).

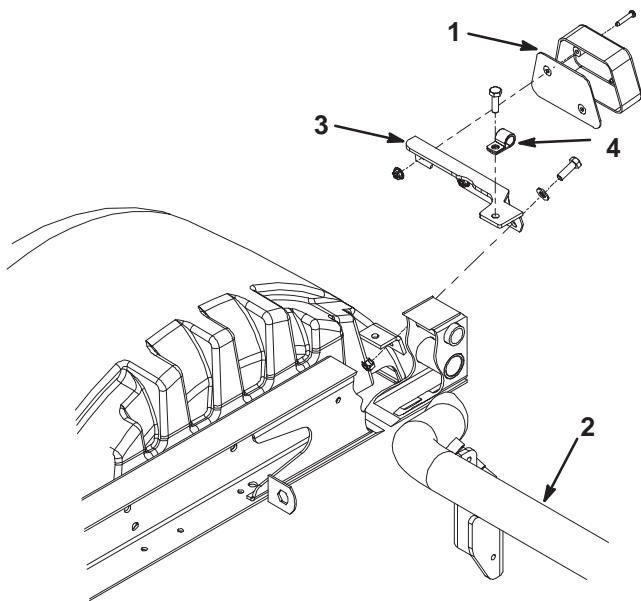


Figure 12

- | | |
|------------------------------|-----------------------|
| 1. Right tail light assembly | 3. Tail light bracket |
| 2. Vehicle rear cross tube | 4. R-clamp |

Operating the Light

To signal turns, move the column mounted lever forward/up for a right turn; backward/down for a left turn.

To operate the warning lights (emergency flashers), move the toggle switch to the On position to illuminate the lights.

41. Plug the light kit wire harness connector into the tail light.
42. Route the right tail light connector wire over the transaxle to the right side of the machine.
43. Mount the tail light assembly to the tail light bracket with 2 pal nuts (Fig. 12).
44. Mount the tail light bracket to the rear frame with (2) 1/4—20 x 3/4 “ lg. capscrews, a flat washer, a R-clamp and (2) locknuts (Fig. 12). Route the wire harness through the R-clamp.
45. Plug the light kit wire harness connector into the right tail light.
46. Secure the wire harness to the frame or stationary cable to prevent hot or rotating components from damaging it.
47. Connect the positive (+) battery cable to the battery.

Note: The connector on the end of the harness is for a trailer connection. Secure the wire harness when it is not in use.

Note: If a Back-up Alarm Kit is not being installed, tie the connector and the Back-up Alarm to the wire harness. Do not plug the reverse alarm into the transmission unless a Back-up Alarm Kit is installed.

