



Signal Light Kit

2004 and After Heavy-Duty Workman® Vehicles

Model No. 107-7985

Parts Catalog

Ordering Replacement Parts

To order replacement parts, please supply the part number, the quantity, and the description of each part desired.

Understanding Reference Numbers

Each Identified part in an illustration has a reference number. The reference number for a part also appears in the parts list, along with other information about the part.

This catalog uses two special reference number formats, one to indicate parts in a service assembly and another to indicate the quantity of a given part in an illustration.

Service Assembly Reference Numbers

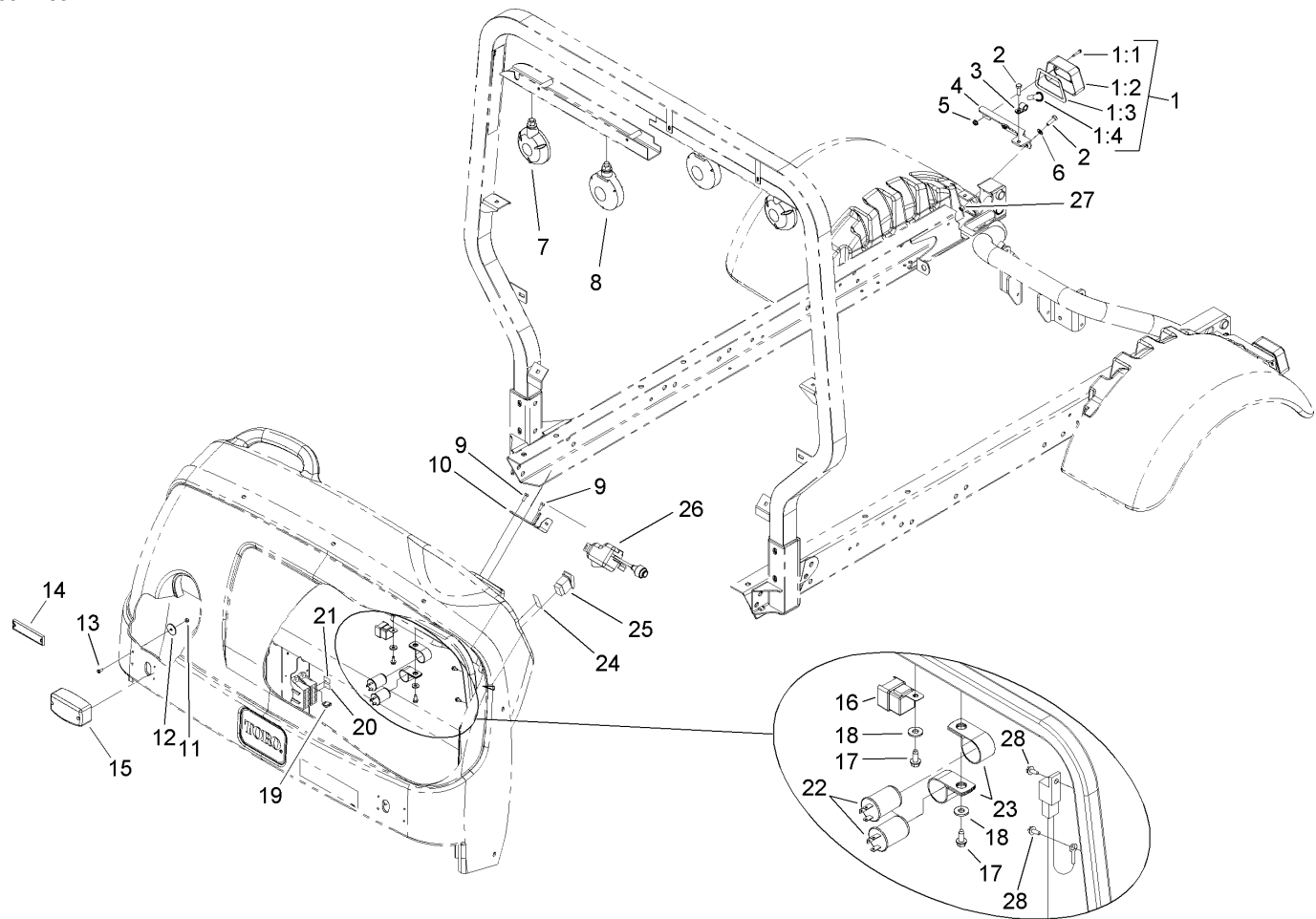
Parts in service assemblies have reference numbers in the form a:b. The a represents the reference number of the entire service assembly and the b represents a sequential number unique to each part within the service assembly.

For example, a wheel assembly might be identified by reference number 6, the tire by 6:1, the valve by 6:2, and the wheel by 6:3. When you order the assembly identified by reference number 6, you receive all parts identified by reference numbers 6:1, 6:2, and 6:3. However, you may also order any part individually. Reference numbers of this type appear in illustrations and in part lists.

Reference Numbers Indicating Quantity

In an illustration, if a reference number indicates more than one part, the reference number has the form nX y. The n represents the quantity of the part, the X is the multiplication symbol, and the y represents the reference number.

For example, in an illustration, the reference number 2X 37 means that two of the parts identified by reference number 37 are indicated.



Signal Light Kit

Ref	Part No.	Qty.	Description	Ref	Part No.	Qty.	Description
1	87-2110	1	Light-Tail/brake	21	107-8010	1	Decal-Signal Lights, Fuse
1:1	32144-93	4	Screw-Pph, Thread Forming	22	218-456	2	Flasher
1:2	87-6300	2	Lens-Light, Tail	23	2412-82	2	Clamp
1:3	87-6310	2	Gasket-Light, Tail	24	107-8012	1	Decal-Warning Lights, Dash
1:4		1	Bulb (Not Serviced Separately)	25	95-8999	1	Switch
2	322-5	2	Screw-HH	26	93-3916	1	Controller-Signal
3	2412-93	1	Clamp-R	27	3296-29	2	Nut-Lock, NI
4	107-7980-03	1	RH Tail Light Bracket ASM	28	32104-60	2	Screw-HWH
5	3290-506	2	Palnut				
6	3256-23	1	Washer-Flat				
7	93-3911	2	Mounting-Stud, Tail Light				
8	93-3913	2	Light-Warning				
9	33113-016	2	Screw-HH				
10	107-7984-03	1	Bracket-Mount				
11	3296-2	8	Nut-Lock				
12	3256-55	8	Washer-Flat				
13	32105-8	8	Screw-SHH				
14	93-3930	2	Reflector				
15	93-3910	2	Light-Signal, Front				
16	99-7430	1	Relay				
17	32144-10	3	Screw-HWH				
18	3256-2	3	Washer-Flat				
19	218-581	2	Fuse-15 Amp				
20	107-8009	1	Decal-Warning Lights, Fuse				