



# Electric Service Module Kit for T-Bar Mid-Size Mowers

Part No. 107-4113

Form No. 3351-544

## Installation Instructions

This kit can be installed on all T-Bar machines.

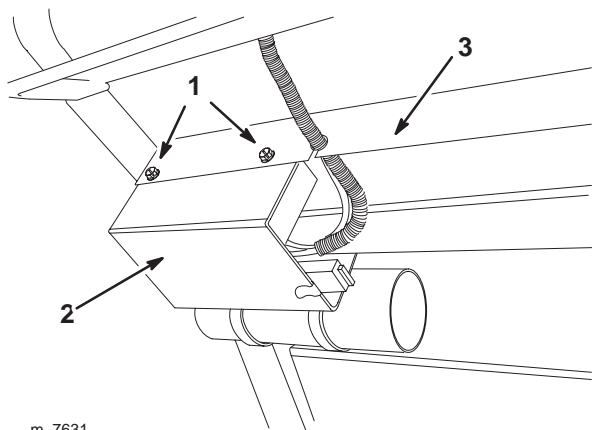
### Loose Parts

**Note:** Use the chart below to identify parts for assembly.

Description	Qty.	Use
Electric module assembly	1	Installing the electric service module

### Removing the Existing Module

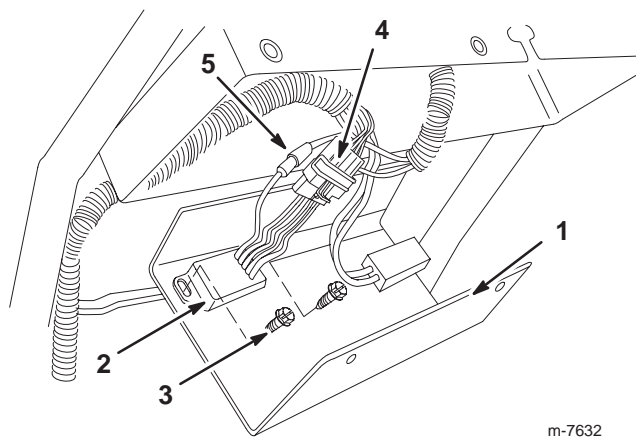
1. Stop the machine, engage the parking brake, turn the engine off and remove the key.
2. Disconnect the negative battery cable from the battery if installing on an electric start unit.
3. Remove the screws securing the control panel cover to the underside of the control panel (Fig. 1).



**Figure 1**

1. Screw
2. Control panel cover
3. Control panel

4. Locate the relay shown in the Figure 2. Remove the fasteners securing the relay to the control panel cover. Save the fasteners for later use.



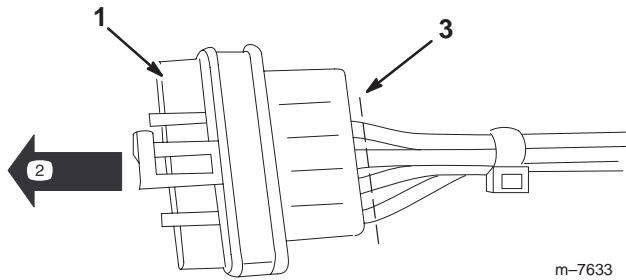
**Figure 2**

1. Control panel cover
2. Relay module
3. Fastener
4. Flat, square connector
5. Bullet connector, brown

5. Remove the relay module from the wiring harness by disconnecting male end of the flat, square connector and the brown wire bullet plug from the wiring harness (Fig. 2).

6. Cut the wires connecting the female end of the flat, square connector at the base of the connector (Fig. 3).

**Important** Pull out on the connector ensure the wires are cut close to connector. This allows enough wire for the insulation to be cut back and the new connector installed.

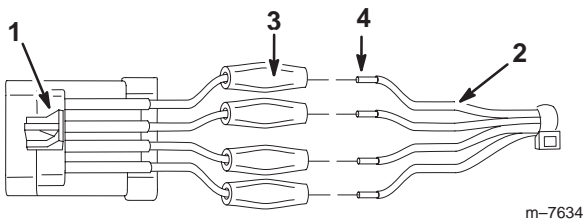


**Figure 3**

1. Flat connector
2. Pull out on connector
3. Cut here

## Installing the Electric Service Module

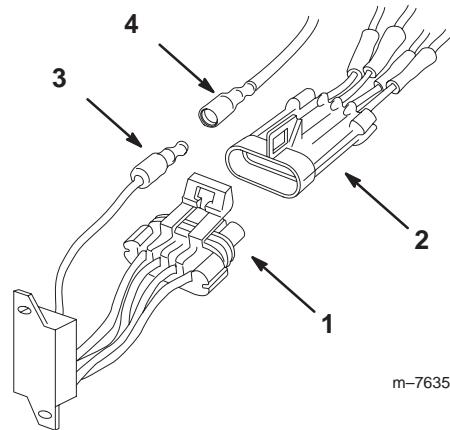
1. Use a electrician's tool to strip 1/4 inch of the insulation on the wires from the cut ends (Fig. 4).
2. Connect the crimping connections on the wires from the end of the male connector of the electric service module to the cut wires from the electrical harness (Fig. 4).
3. Match the wires color for color and crimp the clear connectors to secure the module to the wiring harness (Fig. 4).



**Figure 4**

1. Male connector, new module
2. Cut wires from existing harness
3. Crimping connectors
4. Exposed wire, cut back insulation 1/4 inch

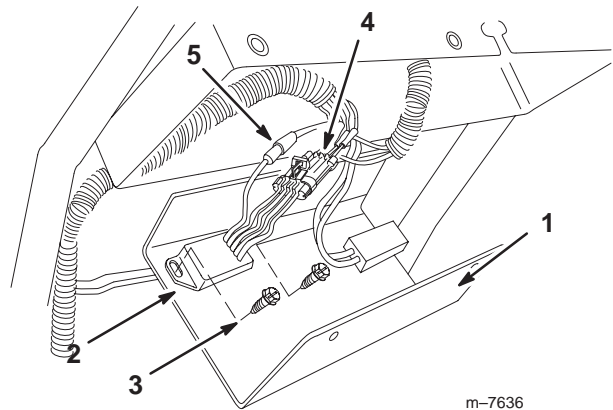
4. Connect the female end of the electric service module to the male connector installed previously (Fig. 5).
5. Connect the male end of the bullet connector from the brown wire to the female end of the bullet connector from the existing wiring harness (Fig. 5).



**Figure 5**

1. Female end connector, electric service module
2. Male end connector, electric service module
3. Male end, bullet connector
4. Female end, bullet connector

6. Secure the new relay to the control panel cover using the fasteners removed previously (Fig. 6).



**Figure 6**

1. Control panel cover
2. Relay
3. Fasteners, removed previously
4. Electric service module connector
5. Bullet connector, brown

7. Install the cover plate to the control panel using the fasteners removed previously (Fig. 6).
8. Connect the negative battery cable.