



Count on it.

Parts Catalog

60V 42in TimeCutter®

Riding Mower

Model No. 75841—Serial No. 40000000 and Up



Ordering Replacement Parts

To order replacement parts, please supply the part number, the quantity, and the description of each part desired.

Understanding Reference Numbers

Each identified part in an illustration has a reference number. The reference number for a part also appears in the parts list, along with other information about the part.

This catalog uses two special reference number formats, one to indicate parts in a service assembly and another to indicate the quantity of a given part in an illustration.

Service Assembly Reference Numbers

Parts in service assemblies have reference numbers in the form a:b. The a represents the reference number of the entire service assembly and the b represents a sequential number unique to each part within the service assembly.

For example, a wheel assembly might be identified by reference number 6, the tire by 6:1, the valve by 6:2, and the wheel by 6:3. When you order the assembly identified by reference number 6, you receive all parts identified by reference numbers 6:1, 6:2, and 6:3. However, you may also order any part individually. Reference numbers of this type appear in illustration and in parts lists.

Reference Numbers Indicating Quantity

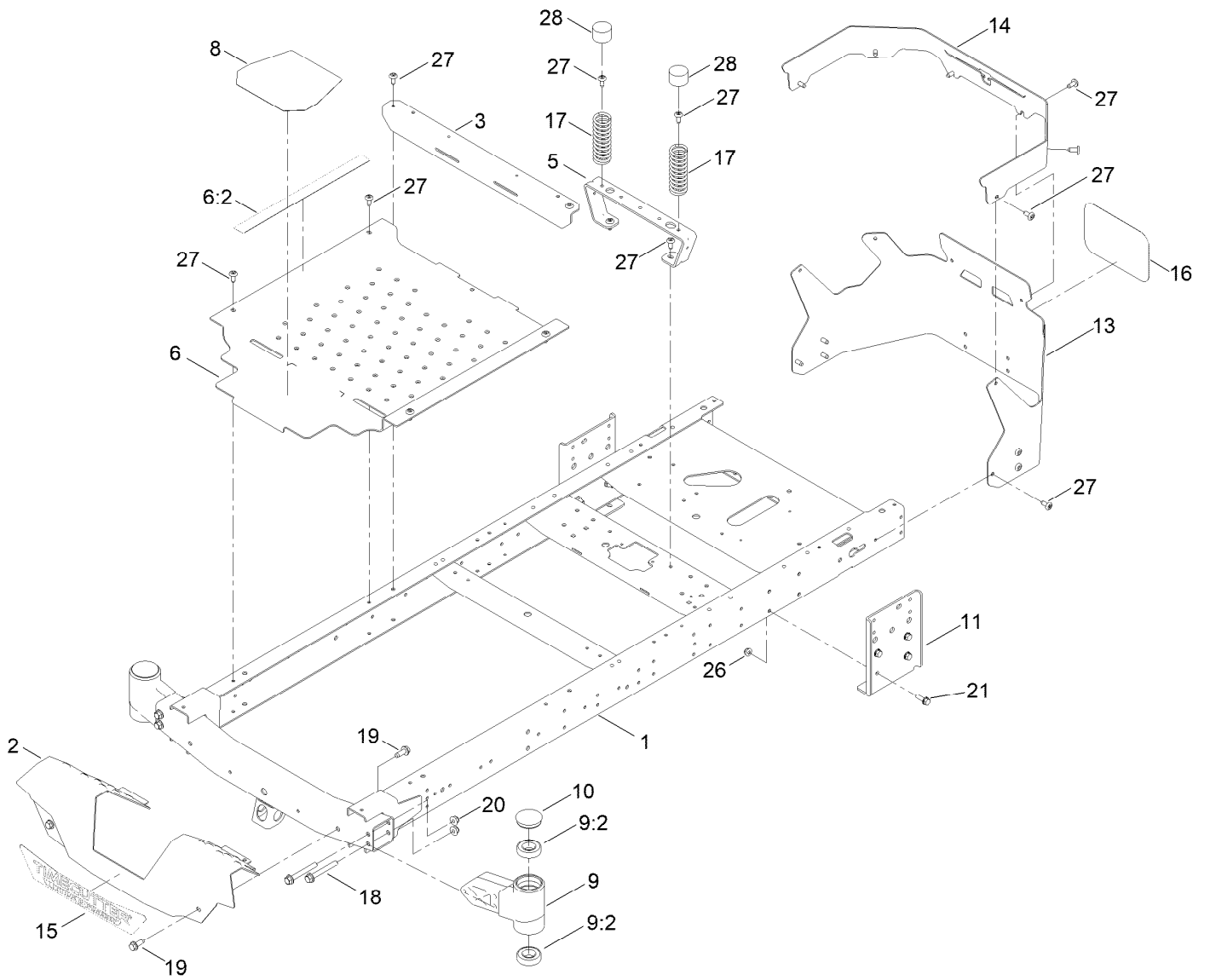
In an illustration, if a reference number indicates more than one part, the reference number has the form nX y. The n represents the quantity of the part, the X is the multiplication symbol, and the y represents the reference number.

For example, in an illustration, the reference number 2X 37 means that two of the parts identified by reference number 37 are indicated.

Contents

Frame Assembly	4
Decklift Assembly	6
Caster Wheel Assembly	8
Traction Drive Assembly	10
Electric Transaxle Assembly No. 161-4488	12
Brake Assembly	14
Rear Tire Assembly	16
Seat Assembly	18
Motion Control Assembly	20
Battery Box Assembly	22
Battery Box Assembly No. 161-4483	24
Pod Assembly	26
Electrical Assembly	28
42in Deck Assembly	30
Attachments and Accessories	32

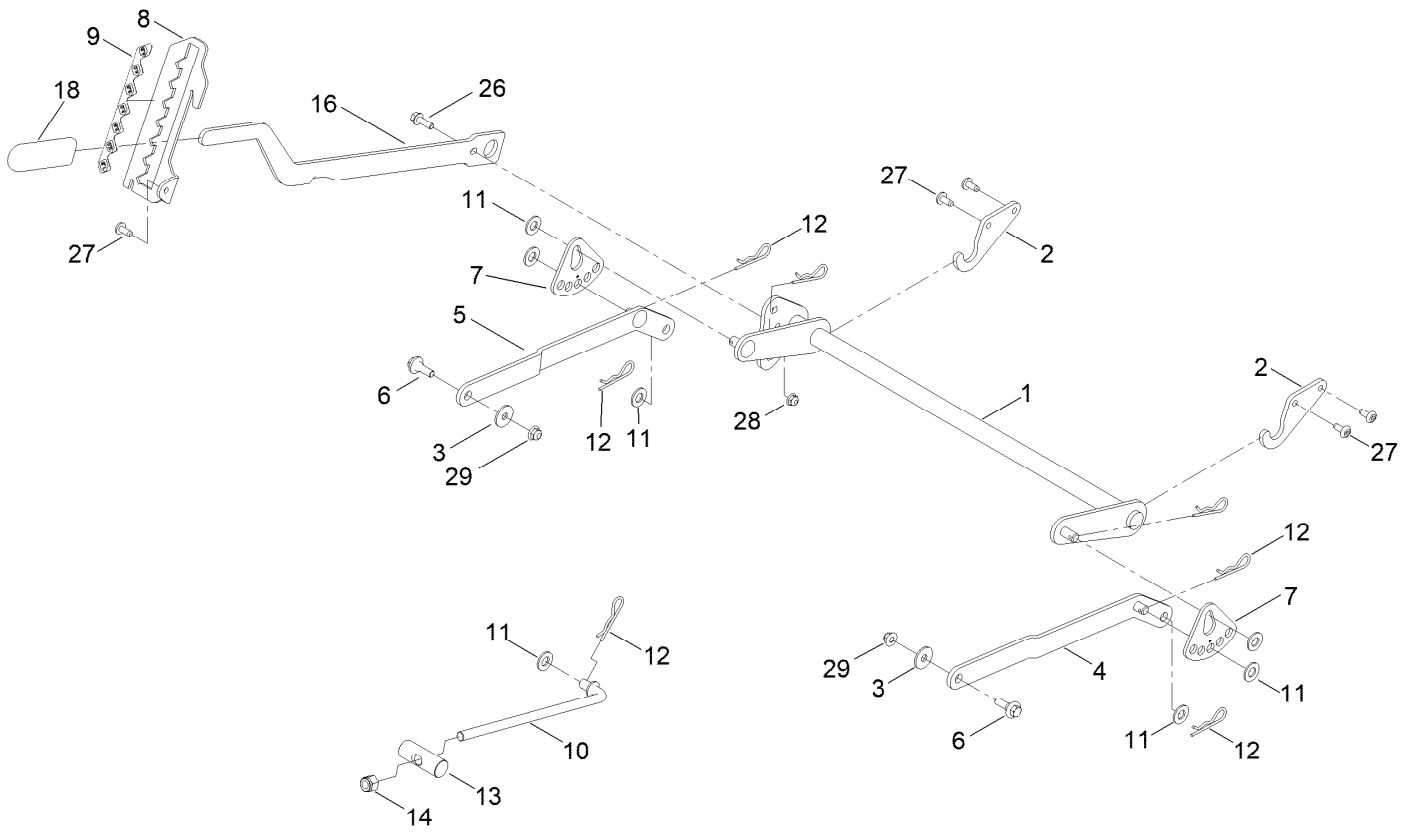
Frame Assembly



Frame Assembly (continued)

<i>Ref.</i>	<i>Part Number</i>	<i>Qty.</i>	<i>Description</i>	<i>Ref.</i>	<i>Part Number</i>	<i>Qty.</i>	<i>Description</i>
1	147-3005-01	1	Frame ASM [red]	14	147-7579-01	1	Guard-Rear, Upper
2	138-9827-07	1	Footrest	15	147-8705	1	Decal-Timecutter
3	138-9791-01	1	Brace-Cross	16	145-1978	1	Decal-Logo, Silver
5	138-6036-03	1	Support-Seat	17	138-2548	2	Spring-Compression
6	161-4457	1	Pan-Floor ASM	18	139-2429	4	Screw-HHF
6:2	147-7617	1	Decal - Warning	19	139-2428	4	Screw-HWH
8	139-3220	1	Tread-Step	20	139-2430	4	Nut-HF, NI
9	140-2098	2	Axle Stub ASM	21	139-2596	8	Screw-HHF
9:2	109-3678	2	Bearing-Ball	26	119-4041	8	Nut-HF
10	138-7200	2	Cap-Grease	27	138-9753	22	Screw
11	145-0415-01	2	Plate-Mount, Drive	28	701178	2	Cap-Protector
13	147-5205-07	1	Guard-Rear				

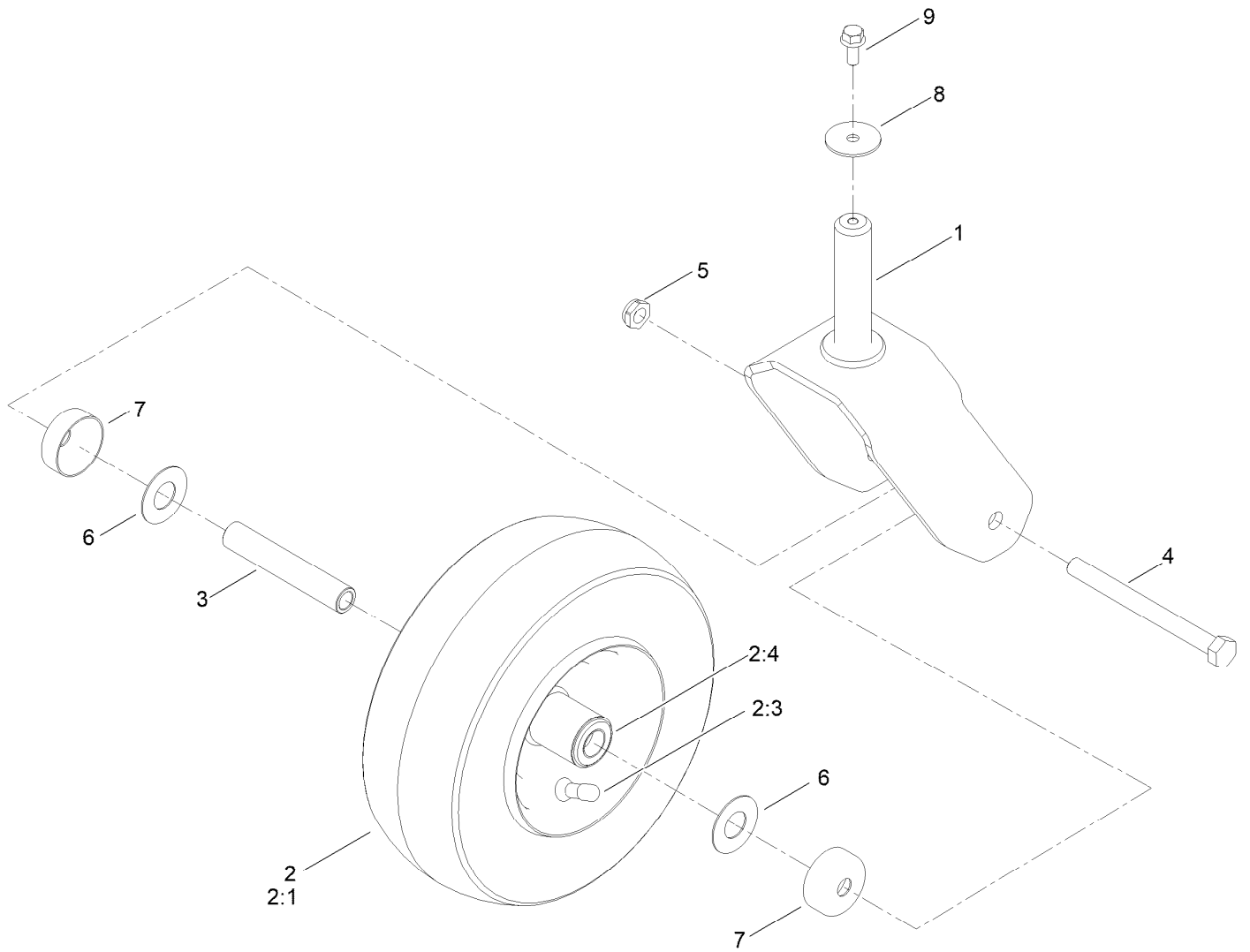
Decklift Assembly



Decklift Assembly (continued)

<i>Ref.</i>	<i>Part Number</i>	<i>Qty.</i>	<i>Description</i>	<i>Ref.</i>	<i>Part Number</i>	<i>Qty.</i>	<i>Description</i>
1	137-7093-03	1	Deck Lift ASM	11	139-2611	7	Washer-Flat
2	138-6021	2	Bracket-Pivot, Decklift	12	139-2562	7	Pin-Hair
3	140-5063	2	Washer-Hardened, Cz	13	119-8810	1	Pin-Pivot
4	137-9844	1	LH Arm ASM	14	139-1725	1	Nut-Hex
5	137-9846	1	RH Arm ASM	16	137-7087-03	1	Lever-Lift
6	137-9847	2	Screw-Shoulder	18	1-633268	1	Grip-Lever
7	138-2564	2	Plate-Adjustment, HOC	26	139-2596	1	Screw-HHF
8	139-2350-01	1	Bracket-HOC	27	138-9753	5	Screw
9	139-2392	1	Decal-HOC	28	119-4041	1	Nut-HF
10	138-6050	1	Rod-Mount, Deck	29	119-4042	2	Nut-HF, NI

Caster Wheel Assembly

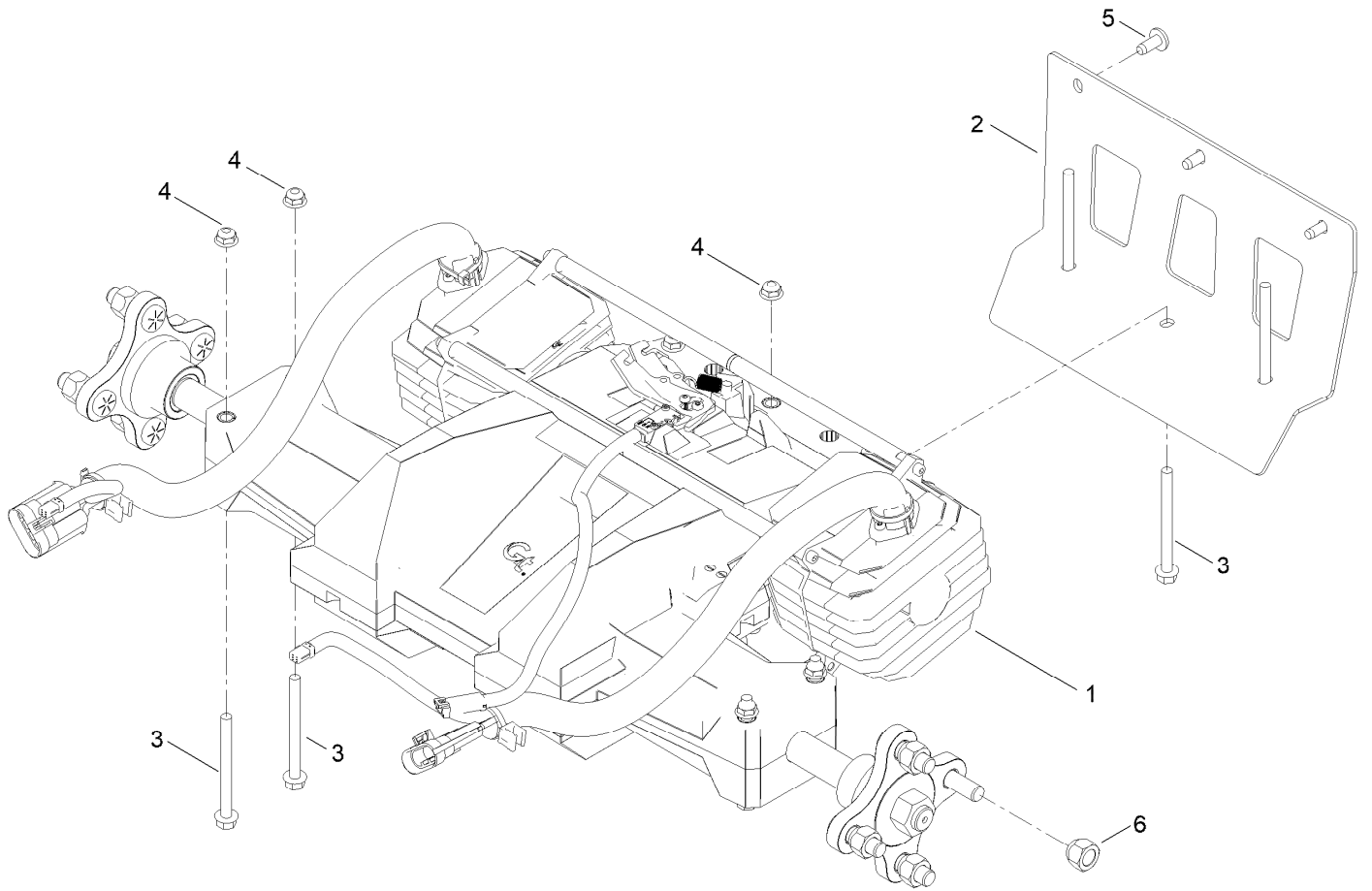


Caster Wheel Assembly (continued)

<i>Ref.</i>	<i>Part Number</i>	<i>Qty.</i>	<i>Description</i>	<i>Ref.</i>	<i>Part Number</i>	<i>Qty.</i>	<i>Description</i>
1	139-3274-01	2	Fork ASM	4	139-2607	2	Screw-HH
2	147-5203	2	Tire ASM	5	139-2617	2	Nut-Lock, NI
2:1	147-2936	1	Tire	6	136-5590	4	Washer
2:3	232-27	1	Stem-Valve	7	138-7208	4	Guard-Seal
2:4	136-4190	2	Bearing	8	115-1151	2	Washer-Flat
2:99	105-0844	1	Tube-Inner ●	9	139-2598	2	Screw-HHF
3	147-7593	2	Spacer-Spanner				

● Not illustrated

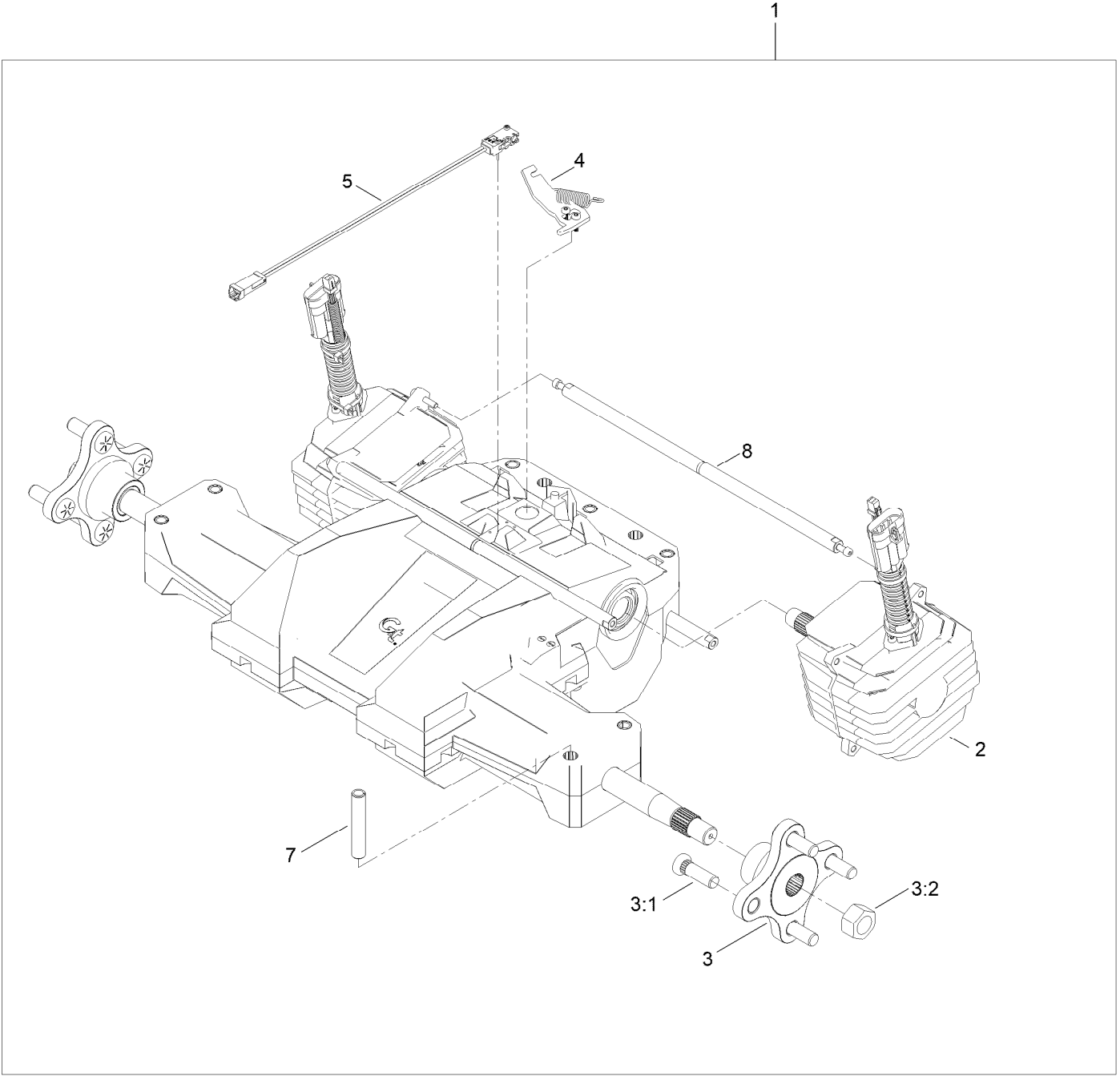
Traction Drive Assembly



Traction Drive Assembly (continued)

<i>Ref.</i>	<i>Part Number</i>	<i>Qty.</i>	<i>Description</i>	<i>Ref.</i>	<i>Part Number</i>	<i>Qty.</i>	<i>Description</i>
1	161-4488	1	Transaxle-Electric, 18"	4	119-4041	7	Nut-HF
2	144-5335-01	1	Bracket-Transmission	5	138-9753	3	Screw
3	147-5202	7	Screw-HH	6	139-2564	8	Nut-Lug

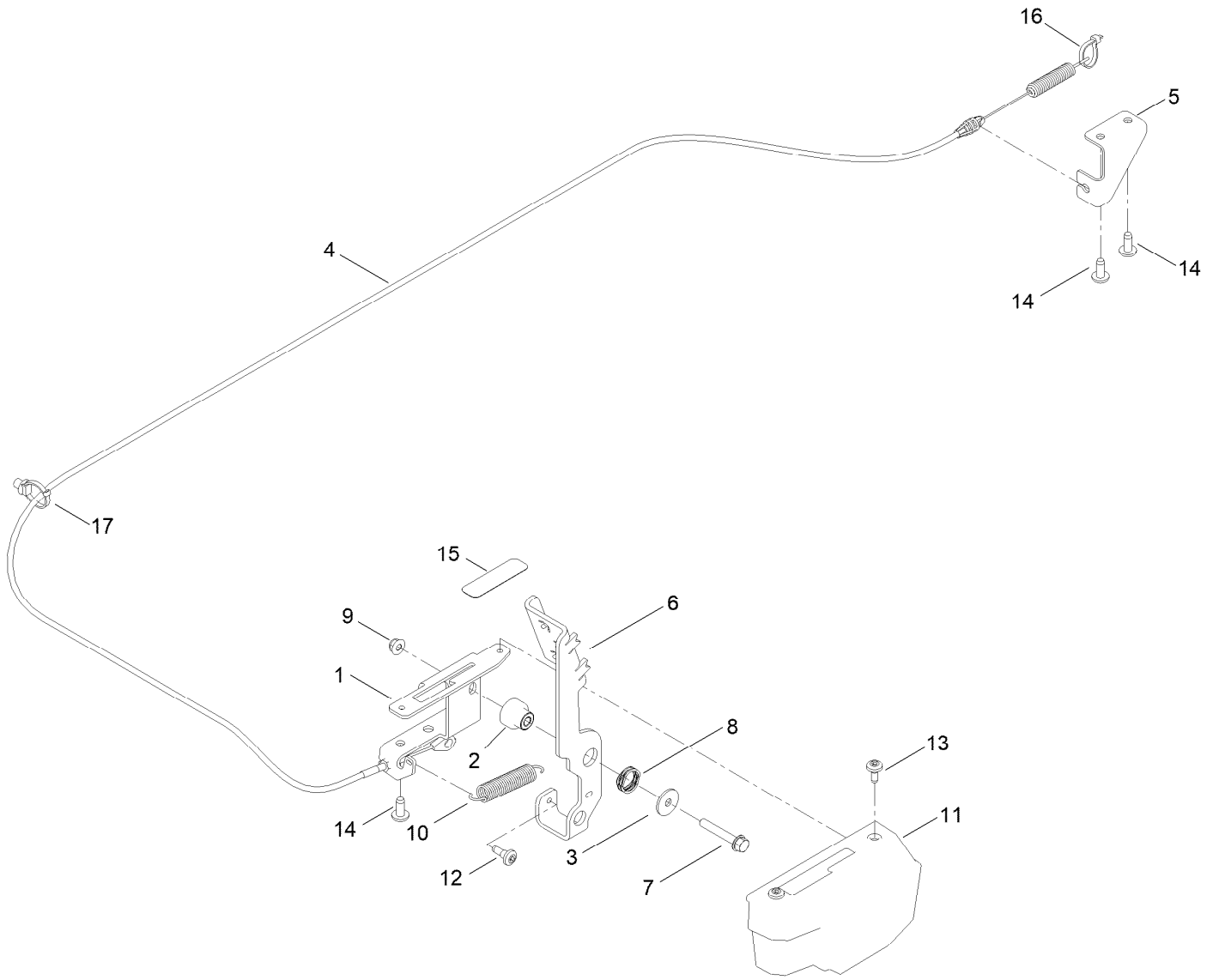
Electric Transaxle Assembly No. 161-4488



Electric Transaxle Assembly No. 161-4488 (continued)

<i>Ref.</i>	<i>Part Number</i>	<i>Qty.</i>	<i>Description</i>	<i>Ref.</i>	<i>Part Number</i>	<i>Qty.</i>	<i>Description</i>
1	147-2238	1	Transaxle-Electric,18" Tire	4	161-4493	1	Arm-Brake ASM
2	161-6416	2	Motor ASM [service]	5	161-4494	1	Switch-Brake ASM
3	161-4491	2	Wheel Hub ASM	7	161-4496	7	Spacer
3:1	161-4492	4	Stud-Wheel	8	161-4497	3	Rod-Cross
3:2	161-4647	1	Nut-Hub				

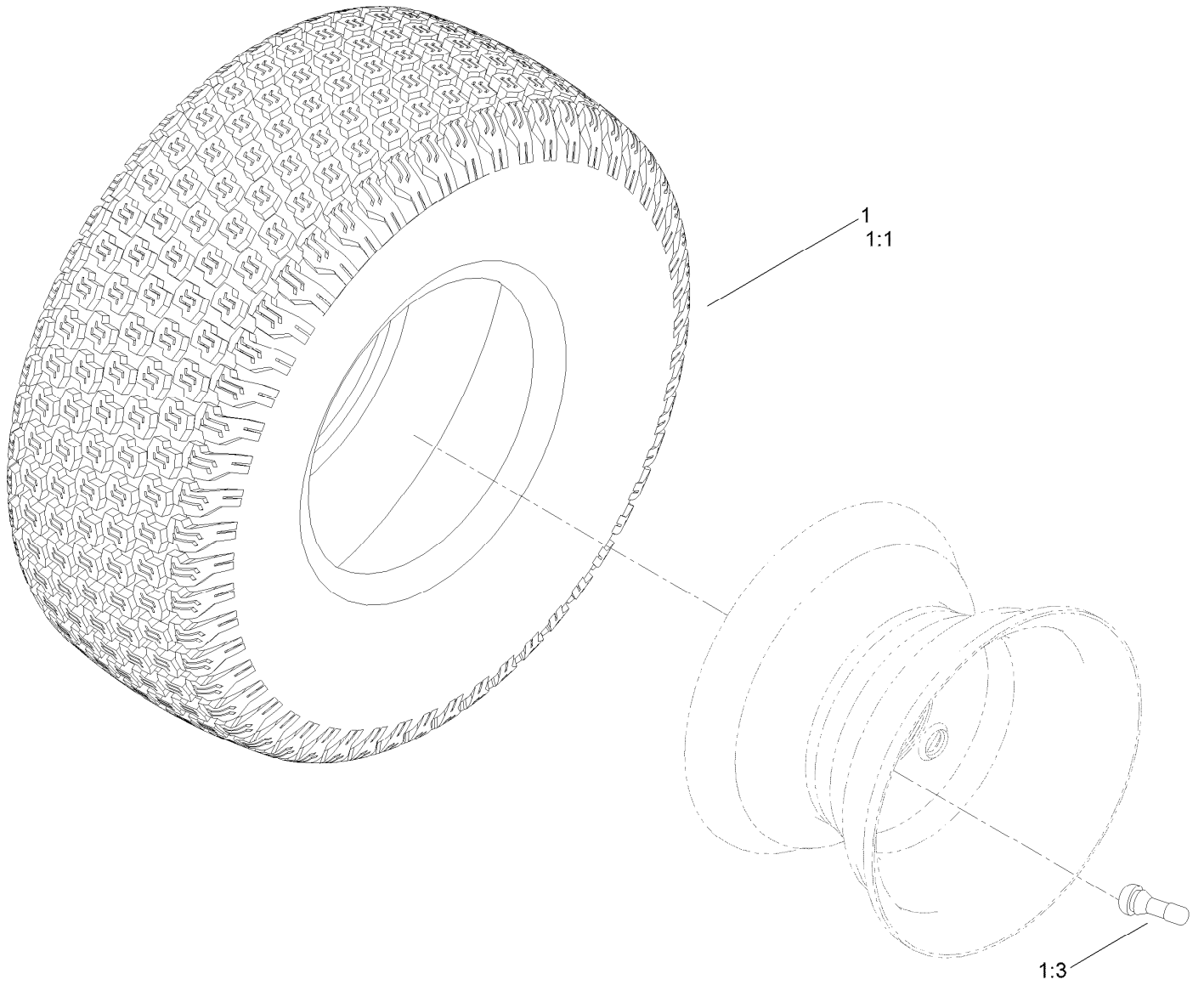
Brake Assembly



Brake Assembly (continued)

<i>Ref.</i>	<i>Part Number</i>	<i>Qty.</i>	<i>Description</i>	<i>Ref.</i>	<i>Part Number</i>	<i>Qty.</i>	<i>Description</i>
1	147-5182-03	1	Bracket-Pedal, Brake	10	137-7040	1	Spring-Return, Pedal
2	147-7741	1	Bushing-Flange	11	147-3048	1	Cover-Brake, Parking
3	5-4460	1	Washer-Pivot	12	135-2015	1	Screw-Shoulder
4	145-0490	1	Cable-Brake	13	120-7950	2	Screw-Torx
5	147-5201-03	1	Bracket-Cable, Brake	14	138-9753	3	Screw
6	147-5181-03	1	Pedal-Brake	15	139-1271	1	Decal-Brake, Parking
7	142-6275	1	Screw-HHF	16	1-303287	1	Tie-Cable
8	120-5116	1	Washer-Wave	17	32180-030	1	Clip-Tie
9	119-4041	1	Nut-HF				

Rear Tire Assembly

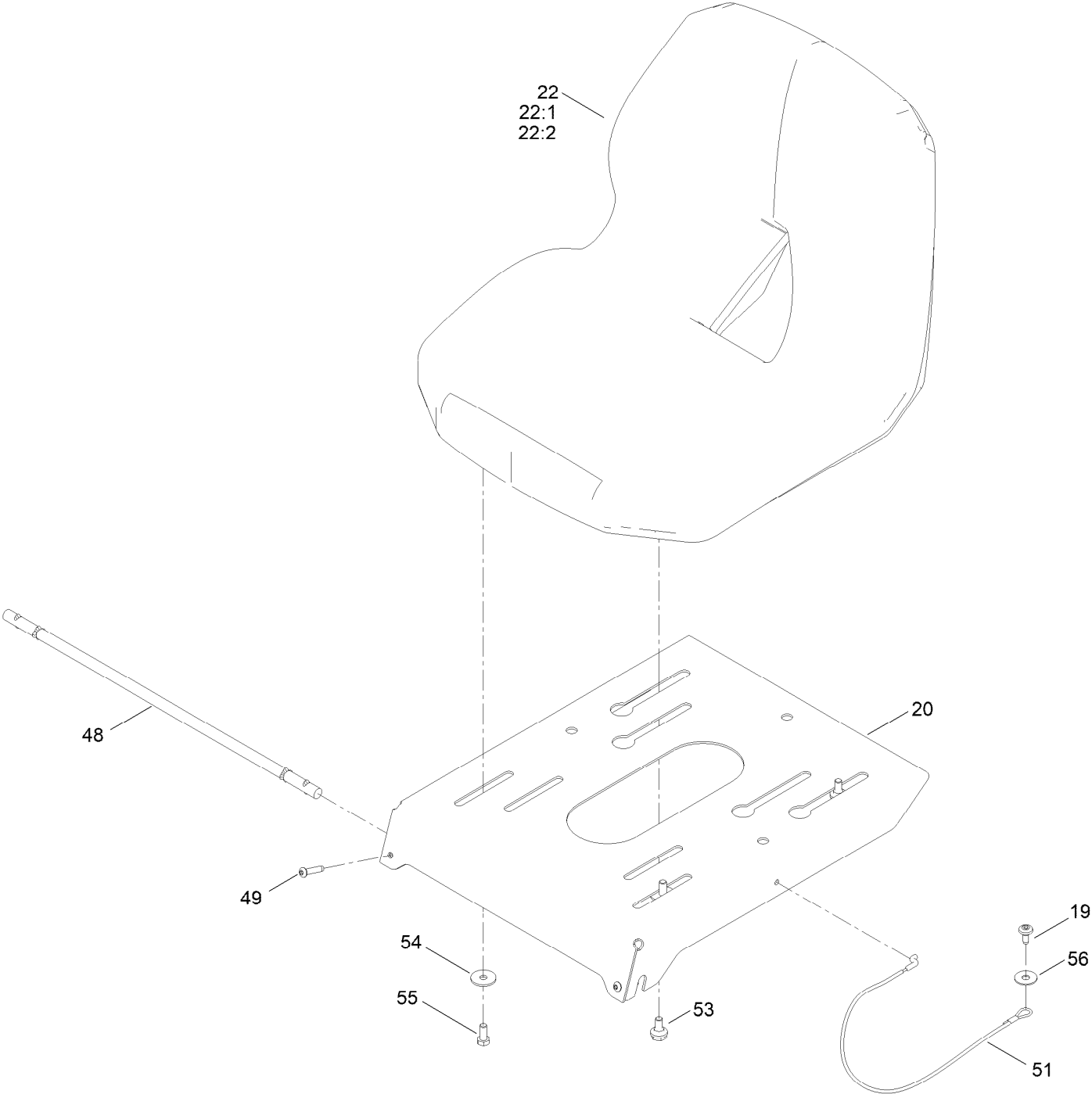


Rear Tire Assembly (continued)

<i>Ref.</i>	<i>Part Number</i>	<i>Qty.</i>	<i>Description</i>	<i>Ref.</i>	<i>Part Number</i>	<i>Qty.</i>	<i>Description</i>
1	139-5846	2	Tire ASM	1:3	232-27	1	Stem-Valve
1:1	126-1618	1	Tire	1:99	107-2491	1	Tube-Tire ●

● Not illustrated

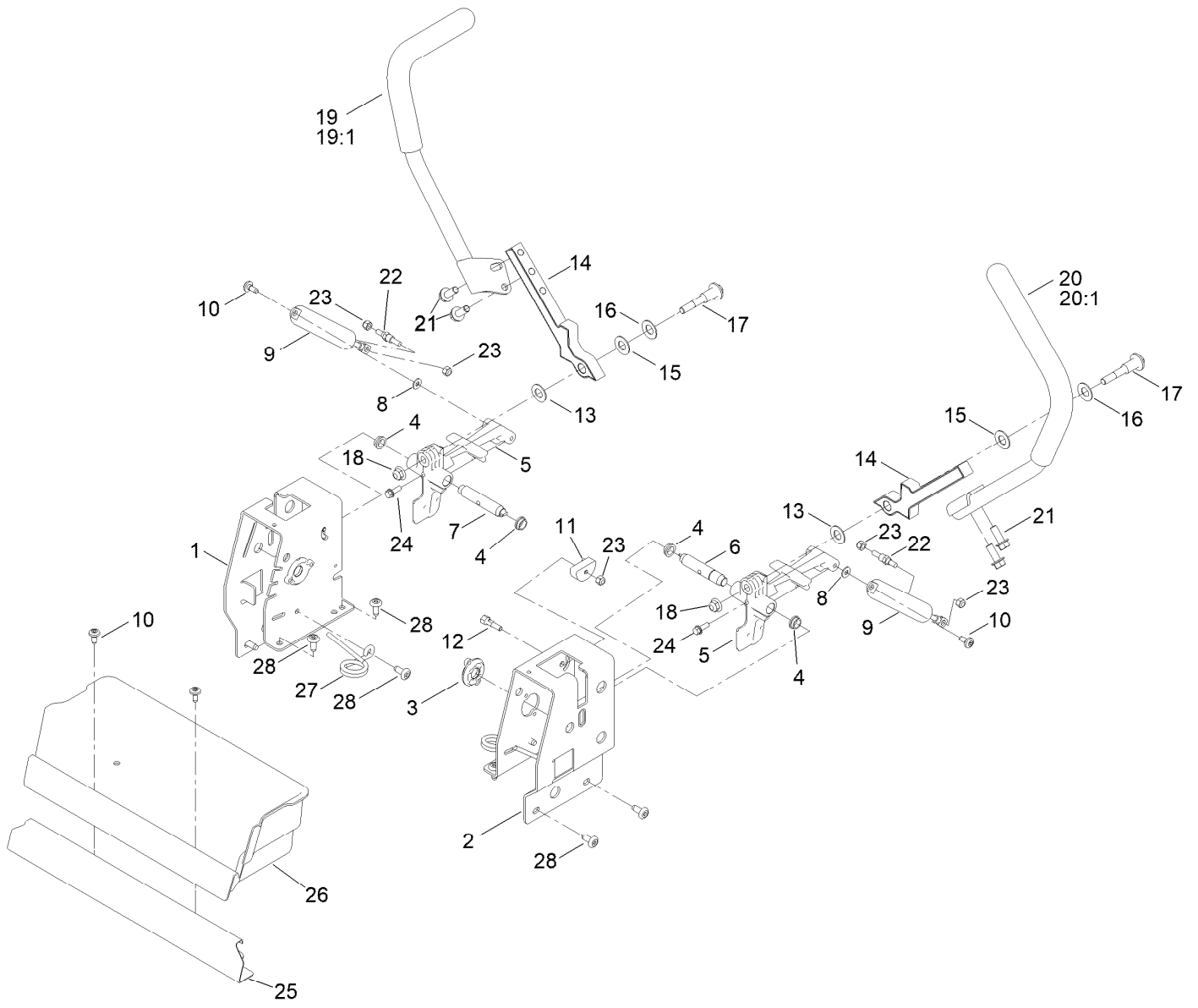
Seat Assembly



Seat Assembly (continued)

<i>Ref.</i>	<i>Part Number</i>	<i>Qty.</i>	<i>Description</i>	<i>Ref.</i>	<i>Part Number</i>	<i>Qty.</i>	<i>Description</i>
19	120-7950	1	Screw-Torx	49	137-3010	2	Screw-BHCS
20	138-9781-03	1	Pan-Seat	51	139-2398	1	Cable-Lanyard
22	147-7744	1	Seat-16 In	53	37-8771	2	Bolt-Shoulder, HF
22:1	147-7743	1	Seat-16 In	54	5-4460	2	Washer-Pivot
22:2	82-2190	1	Switch-Bail	55	137-3052	2	Screw-HH
48	138-7555	1	Rod-Pivot	56	147-5287	1	Washer-Flat

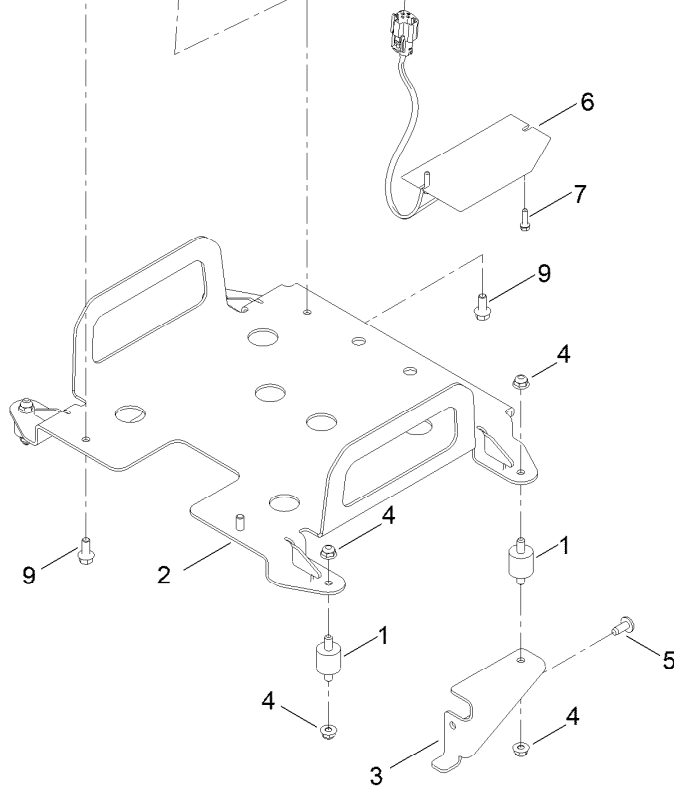
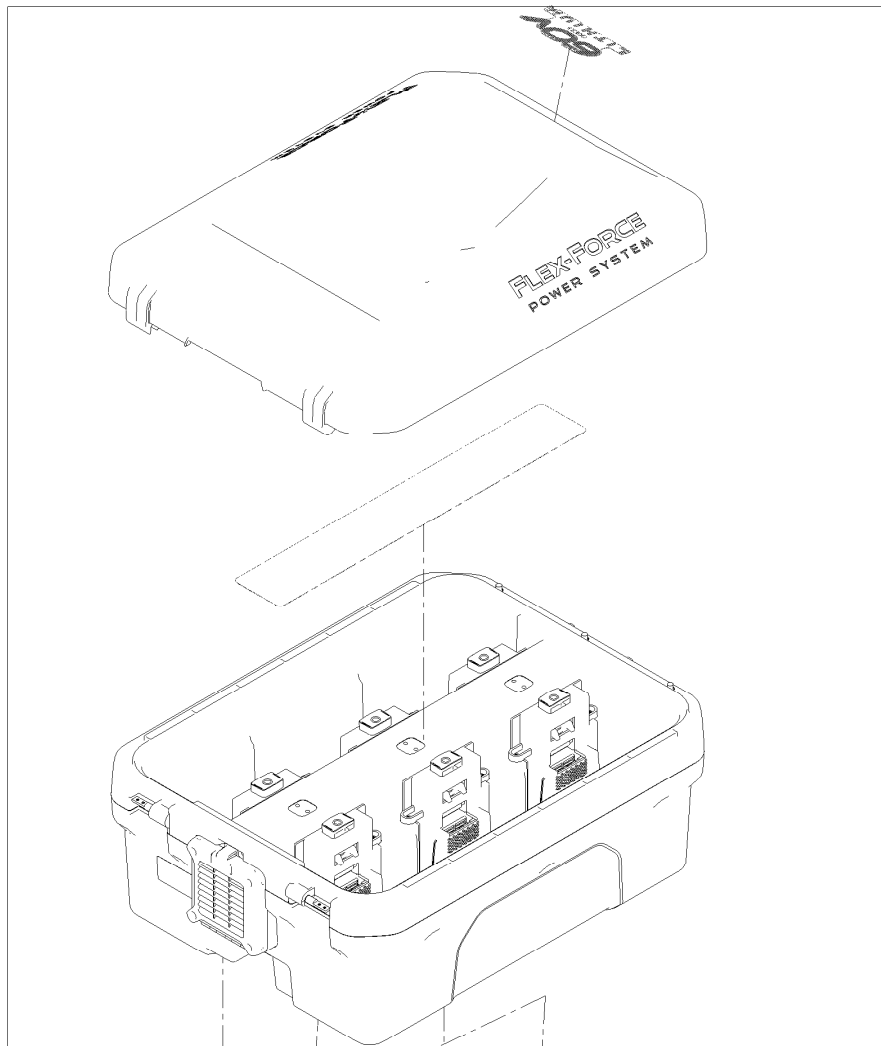
Motion Control Assembly



Motion Control Assembly (continued)

<i>Ref.</i>	<i>Part Number</i>	<i>Qty.</i>	<i>Description</i>	<i>Ref.</i>	<i>Part Number</i>	<i>Qty.</i>	<i>Description</i>
1	140-8322-03	1	Plate-Control Box, RH	16	119-8925	2	Washer-Belleville
2	140-8342-03	1	Plate-Control Box, LH	17	139-2556	2	Bolt-Pivot
3	147-7552	2	Spacer-Sensor	18	119-4042	2	Nut-HF, NI
4	147-7551	4	Bushing-Flange	19	133-7057	1	Handle-Control, RH
5	147-2903	2	Arm-Actuator	19:1	121-0726	1	Grip
6	147-3009	1	Pin-Lever Pivot, LH	20	133-7055	1	Handle-Control, LH
7	147-3010	1	Pin-Lever Pivot, RH	20:1	121-0726	1	Grip
8	119-8952	2	Washer-Spcl	21	139-2597	4	Screw-HHF
9	132-6853	2	Damper-Non Cavitating	22	138-7215	2	Stud-Damper
10	120-7950	4	Screw-Torx	23	137-3088	6	Nut-Hex
11	139-5803	2	Eccentric	24	119-1138	2	Screw-HHF,Patch
12	139-5811	2	Bolt-Pivot, Eccentric	25	139-3280-01	1	Plate-Kick
13	120-2273	2	Washer-Flat	26	145-0421	1	Box-Storage
14	133-9299-05	2	Arm-Control	27	138-7539	2	Spring-Torsion
15	117-1240	2	Washer	28	138-9753	10	Screw

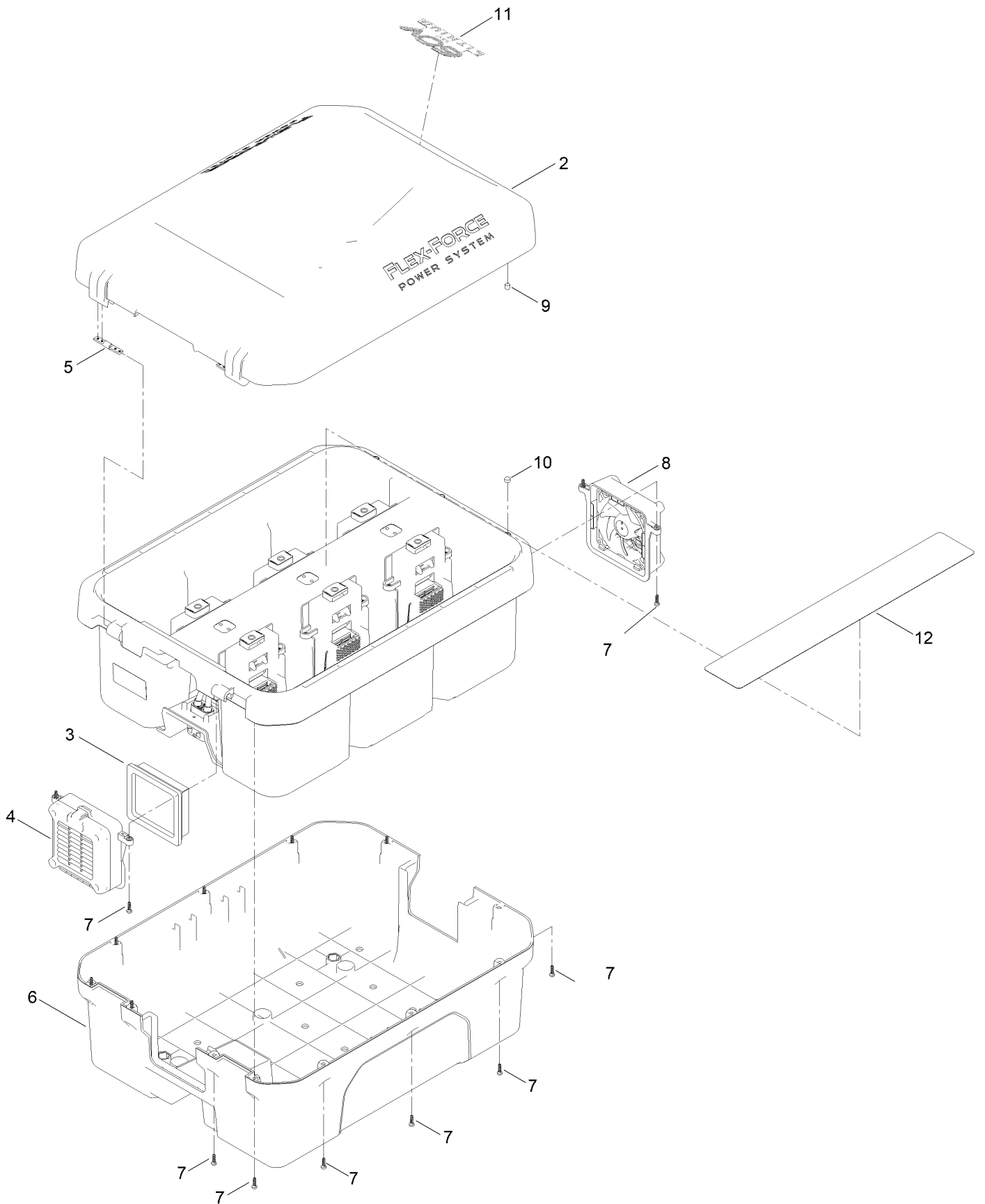
Battery Box Assembly



Battery Box Assembly (continued)

<i>Ref.</i>	<i>Part Number</i>	<i>Qty.</i>	<i>Description</i>	<i>Ref.</i>	<i>Part Number</i>	<i>Qty.</i>	<i>Description</i>
1	147-7605	4	Isolator-1 In OD (5/16-18)	6	147-2192	1	Resistor-Regen
2	161-4468-01	1	Battery Mount ASM [red]	7	145-6922	2	Screw-HWH Thd Roll Zct+w
3	147-7672-03	2	Mount-Box, Rear	8	161-4483	1	Box-Battery, ASM
4	119-4041	8	Nut-HF	9	139-2598	4	Screw-HHF
5	138-9753	2	Screw				

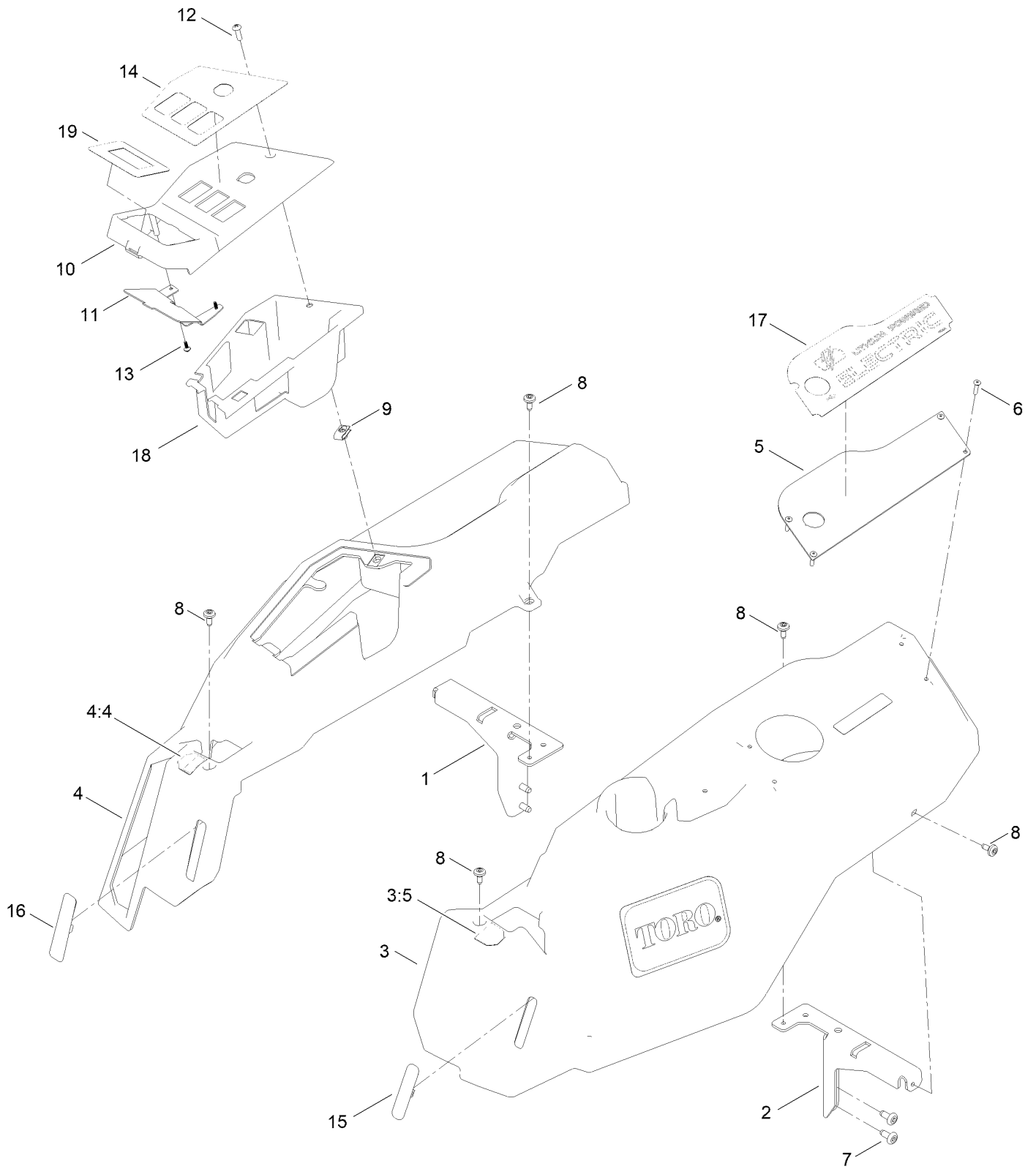
Battery Box Assembly No. 161-4483



Battery Box Assembly No. 161-4483 (continued)

<i>Ref.</i>	<i>Part Number</i>	<i>Qty.</i>	<i>Description</i>	<i>Ref.</i>	<i>Part Number</i>	<i>Qty.</i>	<i>Description</i>
2	147-5348	1	Cover-Box, Battery	8	161-4487	1	Fan-ASM
3	147-5345	1	Filter-Air	9	161-4645	3	Magnet-Lid, Battery Box
4	147-5344	1	Housing-Filter	10	161-4646	3	Magnet-Base, Battery Box
5	161-4648	2	Hinge-Box ASM, Battery	11	147-4208	1	Decal-60V, Lithium
6	147-5342	1	Box-Battery, Outer	12	147-7621	1	Decal-Lithium
7	161-4486	16	Screw-Plastic 4Mmx14MM, Globe				

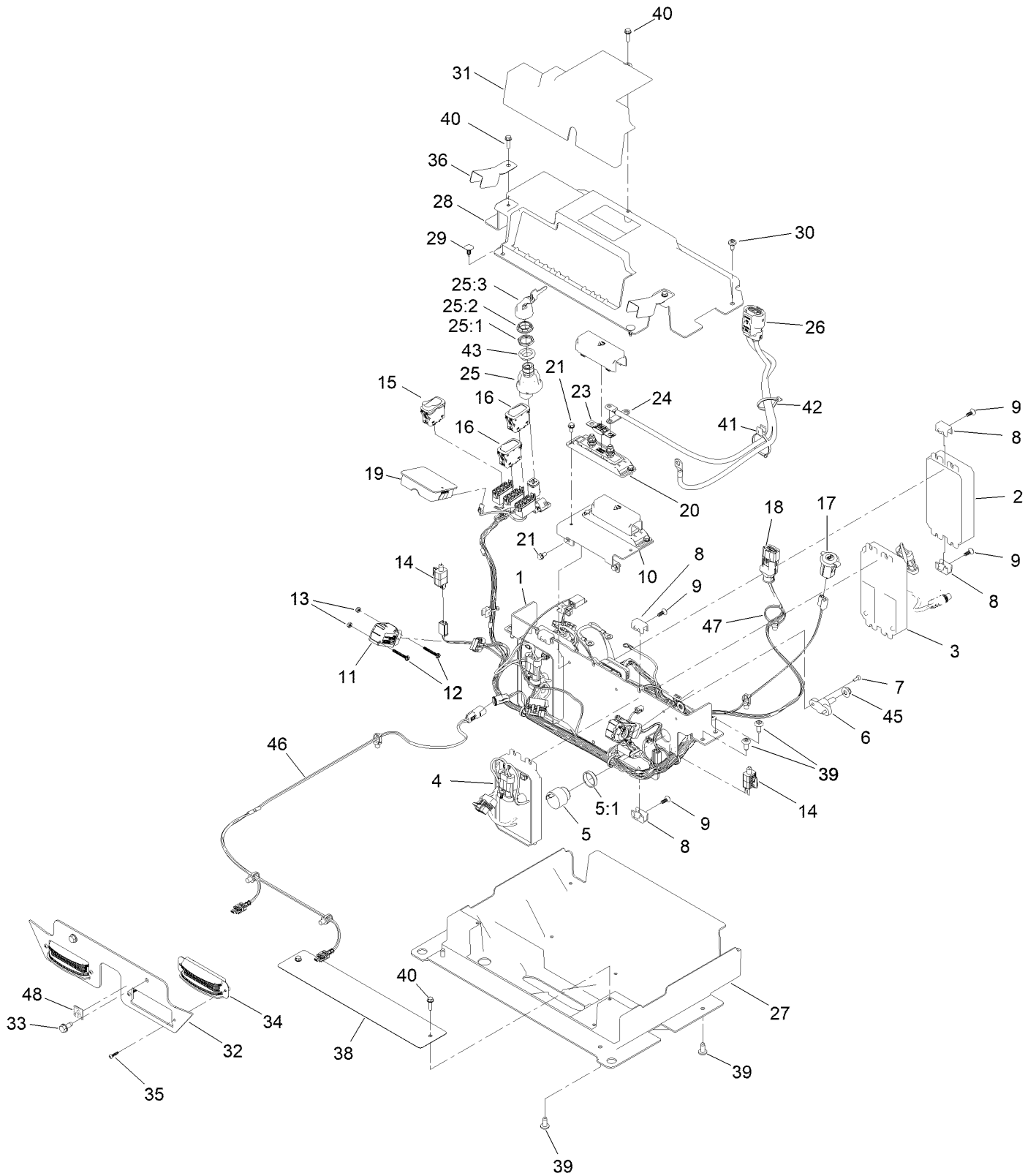
Pod Assembly



Pod Assembly (continued)

<i>Ref.</i>	<i>Part Number</i>	<i>Qty.</i>	<i>Description</i>	<i>Ref.</i>	<i>Part Number</i>	<i>Qty.</i>	<i>Description</i>
1	138-6070-03	1	Support-Pod, RH	10	147-7576	1	Pod-Control
2	138-6071-03	1	Support-Pod, LH	11	147-7577-03	1	Cover-Console
3	145-0501	1	Pod-LH	12	3258-166	1	Screw-PRH
3:5	147-7620	1	Decal - Control Lever, LH	13	145-5837	2	Screw-Plastic, Tbfh
4	147-8768	1	Pod-RH	14	147-7614	1	Decal-Panel, Control
4:4	147-7619	1	Decal - Control Lever, RH	15	147-7629	1	Plug-Pod, LH
5	145-0502-03	1	Plate-Cover, Pod	16	147-7691	1	Plug-Sc
6	130-8451	4	Rivet-Trifold	17	147-7641	1	Decal-60V Lithium
7	138-9753	4	Screw	18	147-7666	1	Cover-Switch
8	120-7950	6	Screw-Torx	19	147-7715	1	Decal-Gt Display
9	107069	1	Clip				

Electrical Assembly



Electrical Assembly (continued)

<i>Ref.</i>	<i>Part Number</i>	<i>Qty.</i>	<i>Description</i>	<i>Ref.</i>	<i>Part Number</i>	<i>Qty.</i>	<i>Description</i>
1	147-7667-03	1	Mount-Controllers	25	122-2513	1	Switch-Ignition, Suns
2	147-7631	1	Controller-Master	25:1	121-5160	1	Nut-Hex
3	147-7635	2	Controller-Traction	25:2	122-2704	1	Nut-Face, M22 (Plastic)
4	147-7633	2	Controller-Deck	25:3	121-5162	1	Set-Key, Ignition
5	80-9330	1	Audio Alarm ASM	26	147-7584	1	Harness-Wire, Power Cable
5:1	104-5107	1	Nut-Plastic, Knurled	27	147-7668	1	Cover-Bottom
6	110-8823	1	Block-Junction	28	147-7670	1	Cover-Controller
7	105-6849	2	Screw-Forming, Thread	29	117-2382	2	Plug-Plastic
8	145-0586	6	Clip-Controller	30	120-7950	2	Screw-Torx
9	138-5775	6	Screw-Delta Point	31	147-7680	1	Cover-Outer
10	147-5200-03	1	Mount-Holder, Fuse	32	139-7488-01	1	Mount-Head Lights
11	140-8373	2	Sensor	33	32144-70	2	Screw-HWHTF
12	147-7729	4	Screw-HWH	34	139-5825	2	ASM-Light,LED
13	147-7730	4	Nut-Hex NI	35	94-4496	4	Screw-PPH
14	110-6765	2	Switch	36	147-7681-03	2	Cover-Sensor
15	139-6368	1	Switch-Rocker, On-None-On	38	147-7719-03	1	Cover-Wire
16	145-0467	2	Switch-Rocker On- None- On	39	138-9753	8	Screw
17	140-7955	1	Port-Power, USB	40	137-3099	5	Screw-Plastite, HWH
18	139-6393	1	Harness-Wire, 2 Blade	41	32180-078	1	Clip-Edge
19	147-2198	1	Display	42	3290-378	1	Tie-Cable
20	145-4958	2	Holder-Fuse	43	145-7110	1	Adapter-Switch, Key
21	32144-4	6	Screw-HWH	45	119-4042	1	Nut-HF, NI
23	122-2559	2	Fuse-100 Amp	46	147-8762	1	Harness-Wire, LED Lights
24	147-5340	1	Busbar-2, Switch	47	32180-030	1	Clip-Tie
				48	147-0290	1	Decal-Light, Warning

42in Deck Assembly (continued)

<i>Ref.</i>	<i>Part Number</i>	<i>Qty.</i>	<i>Description</i>	<i>Ref.</i>	<i>Part Number</i>	<i>Qty.</i>	<i>Description</i>
1	147-7654	1	42 In Deck And Decal ASM	12	138-7268	1	Spring-Torsion
1:2	147-7615	2	Decal-Danger, Deck	13	121-4600	1	Nut-Hex
1:3	137-8127	2	Decal-No Spray	14	1-603299	2	Roller-Scalp, Anti
1:4	130-0731	1	Decal-Danger	15	139-2551	2	Bolt-Shoulder
5	140-8379	2	Motor-Deck	16	139-5871	2	Pin-Deck
6	136-7174	8	Screw-Thd Roll, HWH	17	119-4042	4	Nut-HF, NI
7	140-8361	2	Driver-Blade	18	147-7562	1	Decal-Iron Forged, 42
8	144-1948-03	2	Blade-21.60 In, Combination	21	119-4041	4	Nut-HF
9	145-0411	2	Bolt-Blade, Sems	24	137-3052	4	Screw-HH
10	137-2019	1	Rod-Pivot	25	137-3041	4	Screw-HH
11	138-7502	1	Deflector-Discharge	26	119-4040	4	Nut-HF, NI

Attachments and Accessories

For 75841 — 60V 42in TimeCutter Riding Mower

Product Name	Model/Part
Seat Cover W/O Arm Rest - TC 18in.....	117-0096
42in Recycler Kit, TimeCutter 4275 Riding Mower.....	161-4519
42 Inch Bagging Enhancement Kit.....	161-4521
42 Inch Striping Kit.....	161-4523
Deck Footlift Assist Kit.....	161-4527
Floormat Kit.....	161-4528
Caster Wheel Kit.....	161-4530
Storage Cover.....	490-7516
60V Six Pod Battery Charger 12 AMP.....	66550
60V LI-ION Battery 10.0 AH.....	66810
60V Battery Charger 2 AMP.....	88602
60V Rapid Battery Charger 5.4 AMP.....	88605
60V Battery 2.0 AH.....	88620
60V LI-ION Battery 2.5 AH.....	88625
60V LI-ION, Battery 4.0 AH.....	88640
60V LI-ION Battery 5.0 AH.....	88650
60V LI-ION Battery 6.0 AH.....	88660
60V LI-ION Battery 7.5 AH.....	88675

Notes:

Notes:

Notes:



Count on it.