

36in Tiller Conversion Kit

Yard and Garden Tractors

Model No. 106-8255

Parts Catalog

Ordering Replacement Parts

To order replacement parts, please supply the part number, the quantity, and the description of each part desired.

Understanding Reference Numbers

Each Identified part in an illustration has a reference number. The reference number for a part also appears in the parts list, along with other information about the part.

This catalog uses two special reference number formats, one to indicate parts in a service assembly and another to indicate the quantity of a given part in an illustration.

Service Assembly Reference Numbers

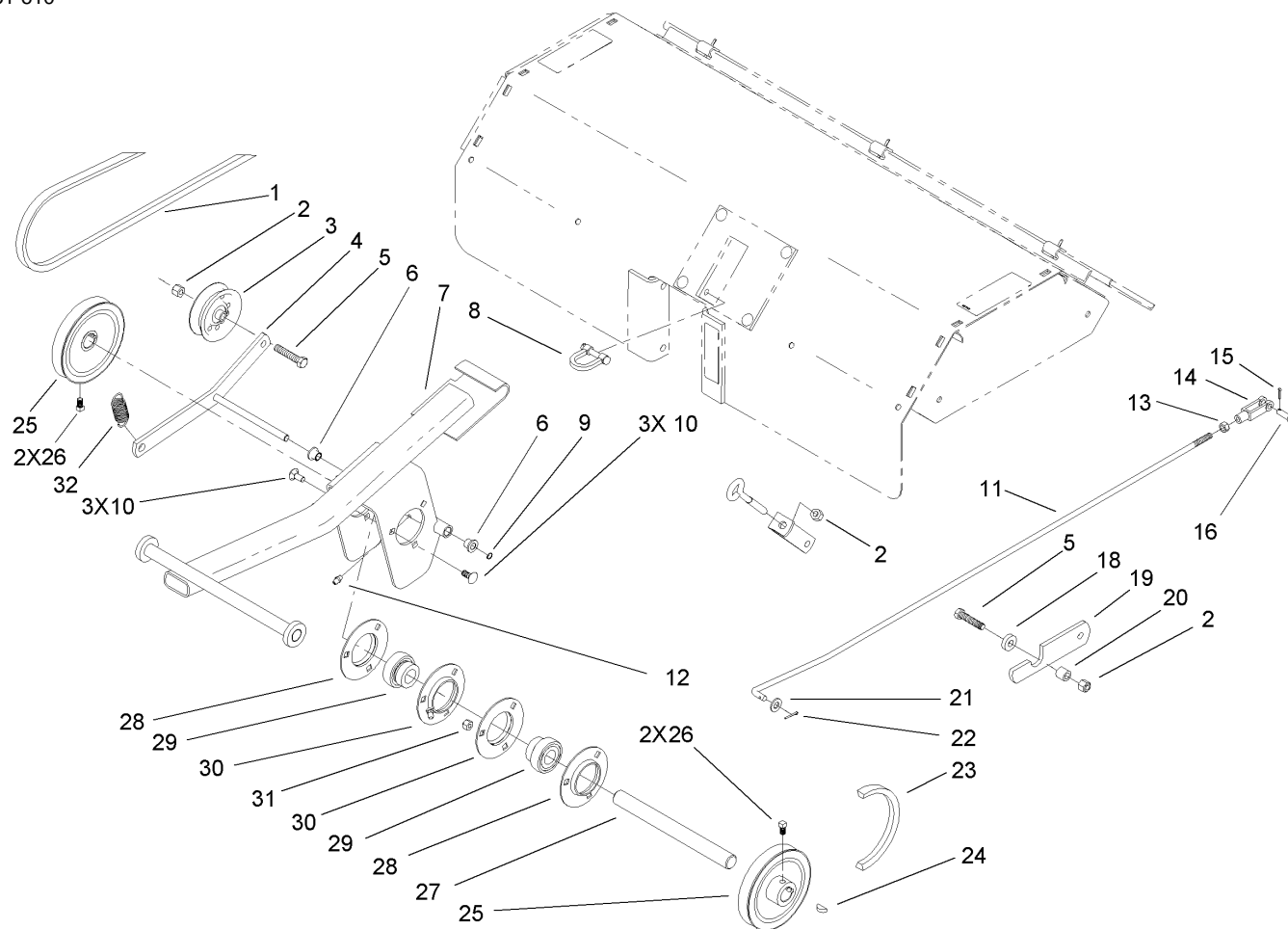
Parts in service assemblies have reference numbers in the form a:b. The a represents the reference number of the entire service assembly and the b represents a sequential number unique to each part within the service assembly.

For example, a wheel assembly might be identified by reference number 6, the tire by 6:1, the valve by 6:2, and the wheel by 6:3. When you order the assembly identified by reference number 6, you receive all parts identified by reference numbers 6:1, 6:2, and 6:3. However, you may also order any part individually. Reference numbers of this type appear in illustrations and in part lists.

Reference Numbers Indicating Quantity

In an illustration, if a reference number indicates more than one part, the reference number has the form nX y. The n represents the quantity of the part, the X is the multiplication symbol, and the y represents the reference number.

For example, in an illustration, the reference number 2X 37 means that two of the parts identified by reference number 37 are indicated.



36in Tiller Conversion Assembly

Ref	Part No.	Qty.	Description
1	703454	1	V-Belt
2	3296-39	3	Nut-Lock, NI
3	92-7104	1	Pulley-Idler
4	106-8275	1	Idler ASM
5	323-9	2	Screw-HH
6	98-1644	2	Bushing-Flanged
7	106-8298-03	1	Support-Jackshaft
8	79-2280	1	Clevis ASM
9	32120-46	1	Ring-Retaining
10	3230-1	6	Bolt-CARR
11	106-8273	1	Rod-Lift
12	302-5	1	Fitting-Grease
13	3219-2	1	Nut-Hex
14	1-303105	1	Yoke-Adjustable
15	3272-6	1	Pin-Cotter
16	1-808280	1	Pin-Clevis
18	9202204	1	Washer
19	92-7023-03	1	Catch-Spring
20	105474	1	Spacer
21	3256-24	1	Washer-Flat
22	3272-6	1	Pin-Cotter
23	106-5813	1	V Belt-Traction
24	937089	2	Key-Woodruff
25	94-7842	2	Pulley-V

Ref	Part No.	Qty.	Description
26	3242-2	4	Screw-SQH
27	94-7840	1	Shaft-Jack
28	110568	2	Flange
29	110569	2	Bearing And Collar
30	110567	2	Flange-Zerk Relube
31	3296-29	6	Nut-Lock, NI
32	92-7305	1	Spring-Extension