



High Height-of-Cut Kit

Greensmaster® DPA and Flex 21™ Reel Mowers

Part No. 106-4699

Form No. 3327-885 Rev A

Installation Instructions

1. Loosen the screws securing the roller shaft to the HOC arms.
2. Remove the front roller.
3. Remove the plow bolts, washers and flange nuts securing the HOC arms to the cutting unit side plates.
4. Remove the HOC arms.
5. Remove the adjusting screws from the HOC arms.

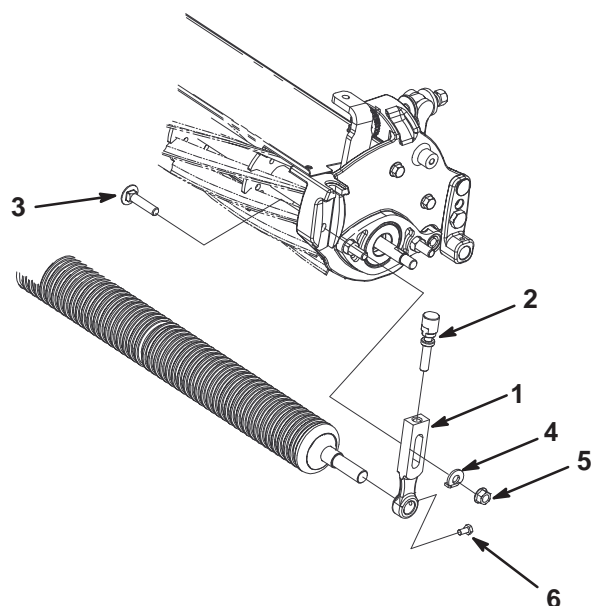


Figure 1

- | | |
|--------------------|---------------|
| 1. HOC arm | 4. Washer |
| 2. Adjusting screw | 5. Flange nut |
| 3. Plow bolt | 6. Screw |

Note: As the reel wears, the standard HOC arms may need to be re-installed to attain certain heights of cut.

11. If the kit is mounted onto a DPA cutting unit and the height of cut is above 1/8 in., the rear roller spacers must be positioned below the side plate mounting flanges (Fig. 2).

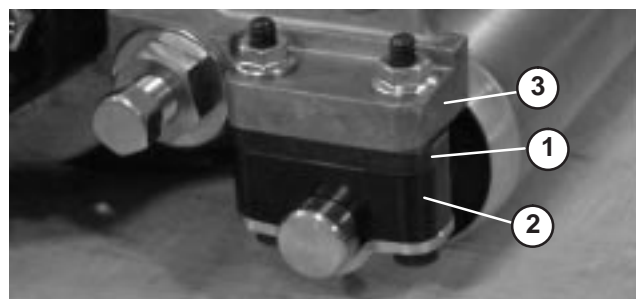


Figure 2

- | | |
|-------------------|-------------------------------|
| 1. Spacer | 3. Side plate mounting flange |
| 2. Roller bracket | |

6. Apply an anti-seize lubricant to the threads of the adjusting screws. Thread the screws into the new HOC arms.
7. Loosely mount the HOC arms to the cutting unit side plates with the plow bolts, washers, and flange nuts you previously removed.
8. Install the roller into the HOC arms.
9. Center the roller between the HOC arms and tighten the screws securing the roller shaft to the HOC arms.
10. Adjust to the desired height of cut and tighten the HOC arm mounting fasteners.