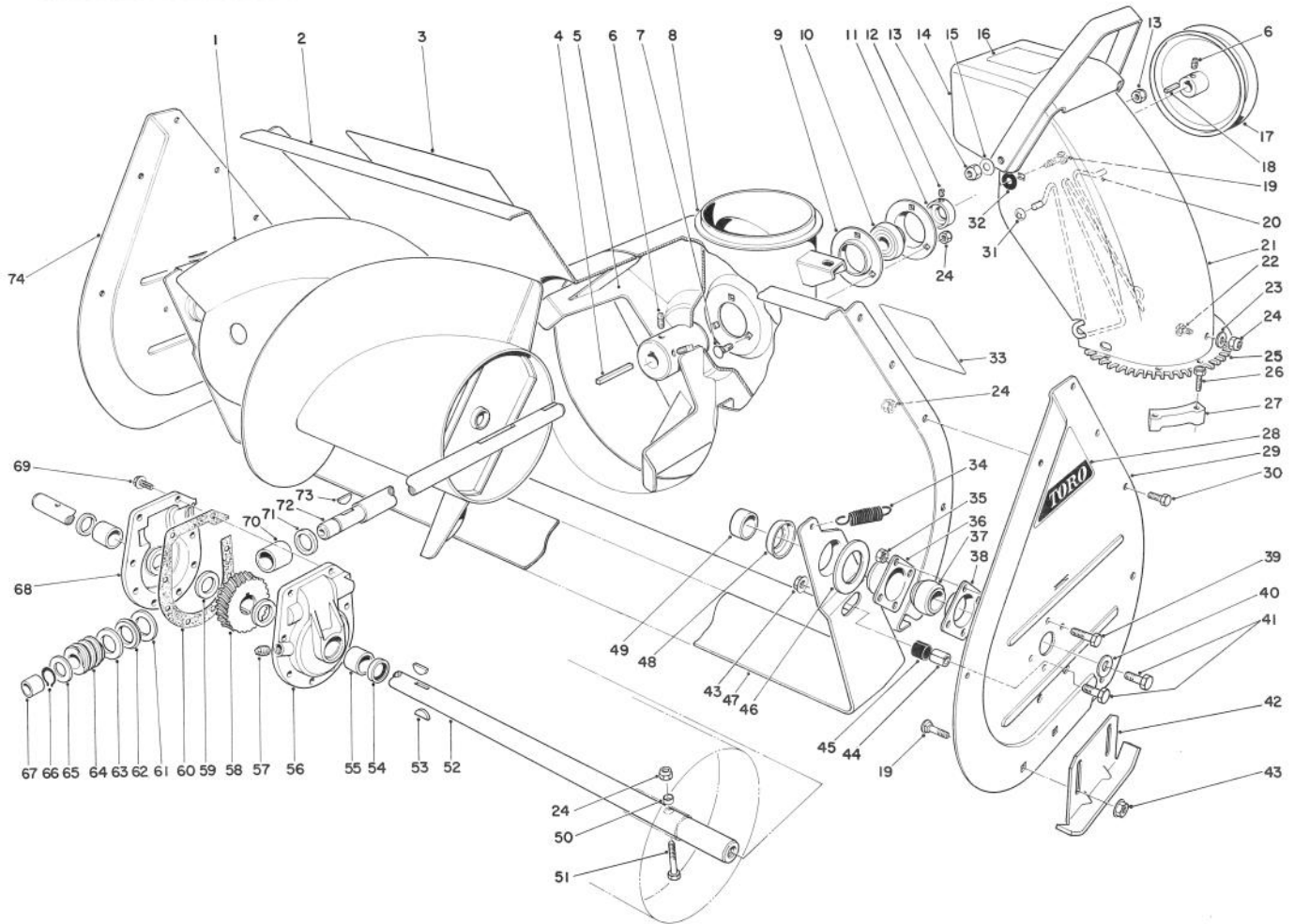




MODEL NO. 38150 — 600001 & UP

**PARTS CATALOG**

**826 SNOWTHROWER**

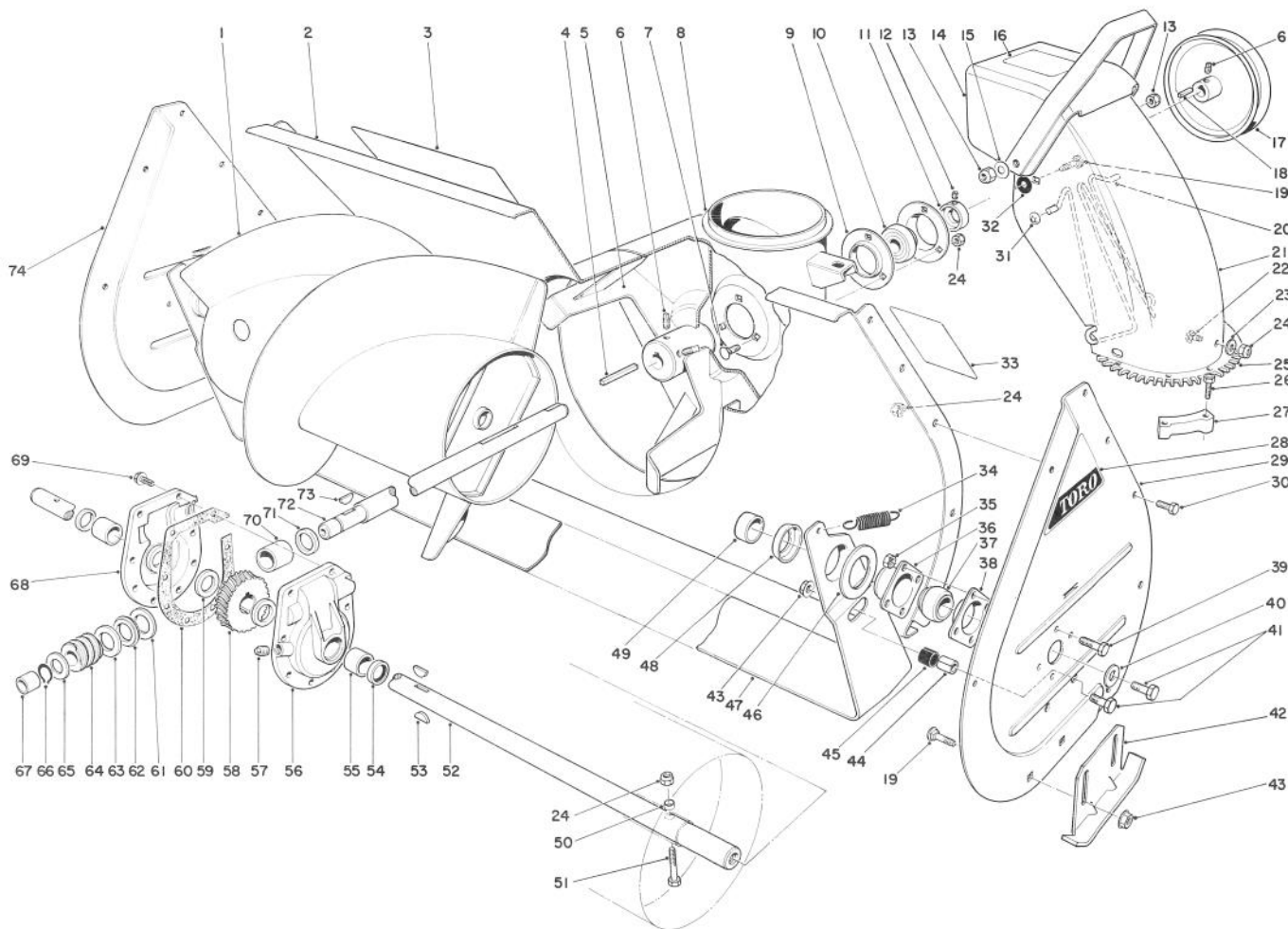


**AUGER ASSEMBLY**

Ref. No.	Part No.	Description	No. Used
1	26-6160	Auger R.H.	1
*	26-6170	Auger L.H.	1
2	25-5100	Auger Housing	1
3	54-9910	Decal — Auger Warning	1
4	6-8590	Key — Impeller	1
5	19-8890	Impeller	1
6	3242-4	Set Screw	4
7	3230-1	Carriage Bolt	3
8	25-5170	Chute Ring	1
9	251-229	Bearing Flange	2
10	251-224	Bearing — Impeller	1
11	251-231	Locking Collar	1
12	3245-32	Set Screw	2
13	32152-2	Locknut	2
14	11-9349	Deflector (Incl. Ref. #16)	1
15	3290-340	Washer Belleville	2

Ref. No.	Part No.	Description	No. Used
16	53-7660	Decal — Discharge	1
17	5-7400	Pulley Impeller	1
18	3-6857	Key	1
19	3231-27	Carriage Bolt	6
20	54-9770	Chute Wire	1
21	25-5440	Upper Chute	1
22	3230-18	Carriage Bolt	3
23	3256-23	Washer	3
24	3296-29	Locknut	18
25	25-5290	Swivel Plate	1
26	27-0220	Screw Special	6
27	25-5450	Swivel Block	3
28	17-6500	Decal — Auger Side Plate	2
29	39-6130	Sideplate Auger L.H.	1
30	322-2	Capscrew	10
31	3290-326	Pushnut	2

\*Not Illustrated



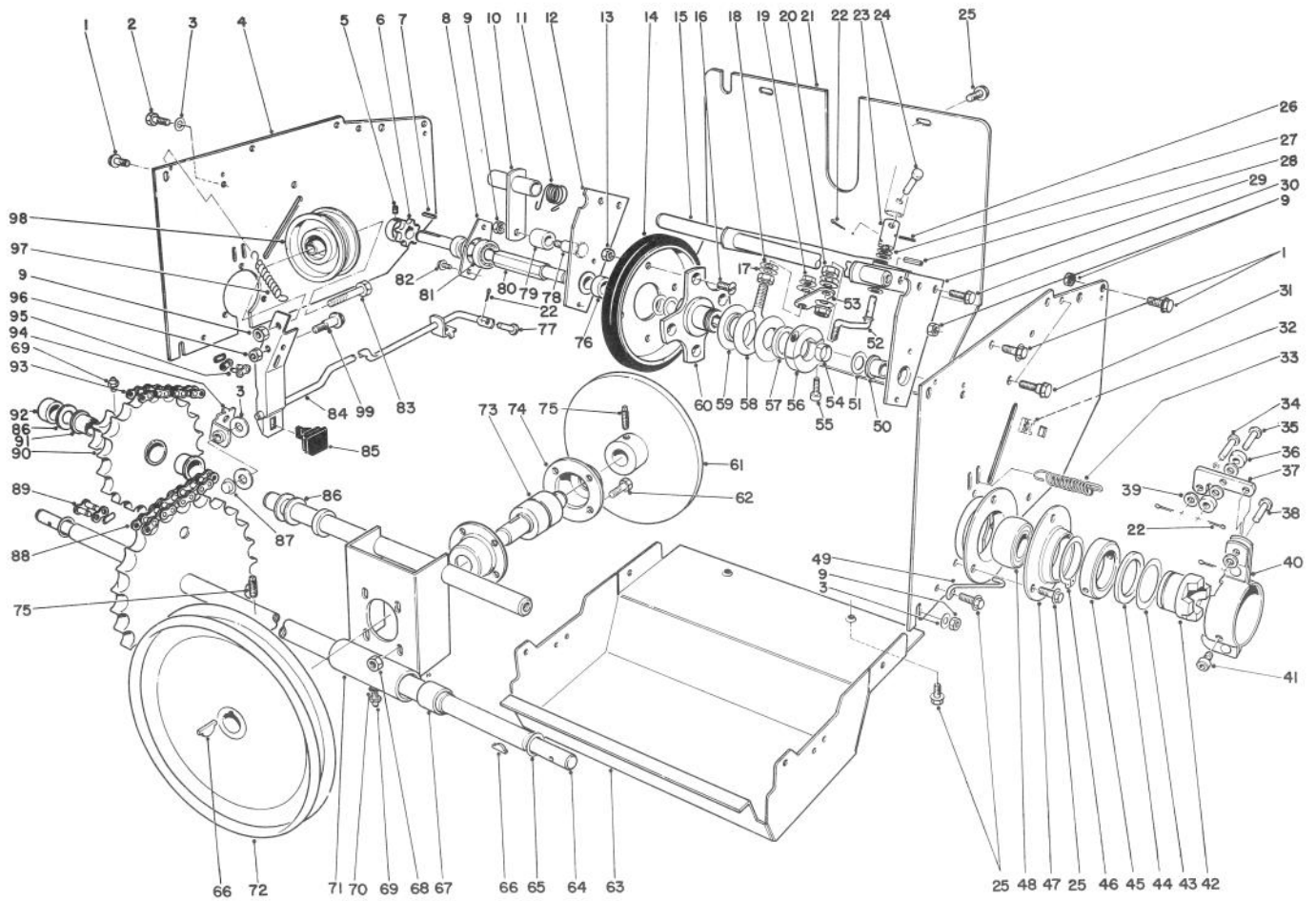
## AUGER ASSEMBLY (Continued)

Ref. No.	Part No.	Description	No. Used
32	20-4320	Washer Rubber	2
33	53-7670	Decal — Auger Warning	1
34	5-7290	Spring Scraper	2
35	32152-4	Locknut	8
36	20-0990	Flange Bearing Front	2
37	20-0980	Bearing	2
38	20-1000	Flange Bearing Rear	2
39	321-3	Capscrew	8
40	3-0750	Flat Washer	2
41	323-6	Capscrew	4
42	20-2840	Auger Skid	2
43	32128-21	Locknut	6
44	25-5140	Standoff — Scraper Stop	2
45	25-5150	Bumper — Scraper Stop	2
46	20-0300	Spacer — Scraper Blade	2
47	19-9140	Scraper Blade	1
48	26-6400	Positioner — Scraper Blade	2
49	26-6390	Spacer Auger	2
50	25-5090	Spacer Auger Hub	2
51	17-7030	Bolt Auger	2
52	11-7000	Shaft Auger	1
53	3257-33	Key Woodruff	2
54	7-0045	Oil Seal	2
55	256-237	Bushing	2

Ref. No.	Part No.	Description	No. Used
56	37-8860	Bear Case L.H. (Incl. Ref. #54-55)	1
57	281-1	Pipe Plug	1
58	5-7180	Gear Worm	1
59	252-71	Thrust Bearing	2
60	51-0460	Gasket	1
61	252-78	Thrust Washer	1
62	252-76	Thrust Bearing	1
63	252-77	Thrust Washer	1
64	5-7170	Worm	1
65	3-8664	Thrust Washer	1
66	32120-72	Retaining Ring	1
67	256-32	Bushing	1
68	37-8850	Gear Case R.H. (Incl. Ref. #54-55)	1
69	32144-41	Thread Forming Screw	8
70	20-3210	Bushing	1
71	237-87	Seal	1
72	19-8540	Shaft Impeller	1
73	3257-23	Key Woodruff	1
74	39-6120	Sideplate Auger R.H.	1
*	19-6990	Gear Case Assembly Complete (Incl. Ref. #52-73)	1
*†	20-0640	Drift Breaker Kit	1

\*Not Illustrated

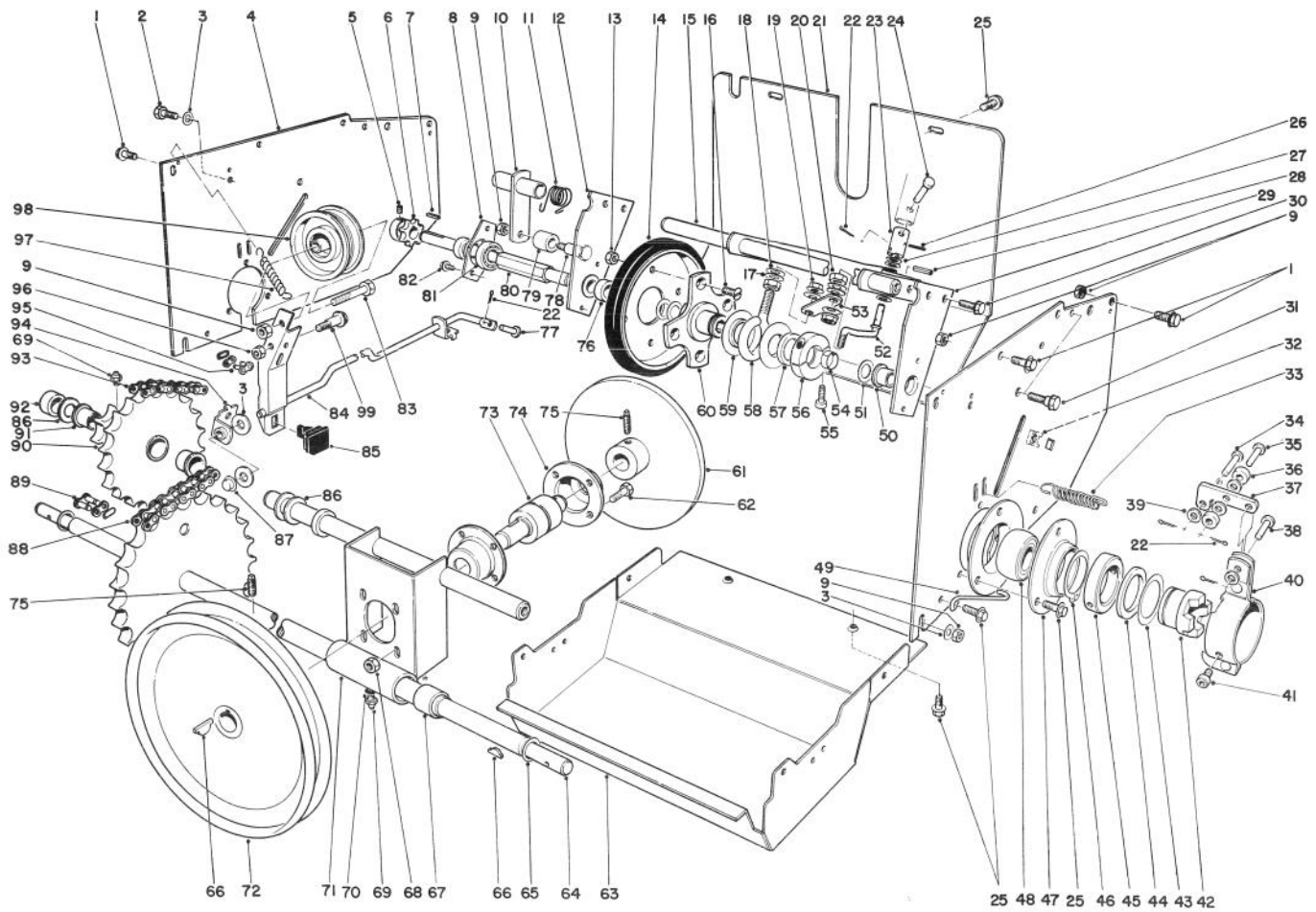
2 †Optional Equipment



## TRACTION ASSEMBLY

Ref. No.	Part No.	Description	No. Used
1	323-6	Capscrew	7
2	32144-15	Hex Thread Forming Screw	2
3	3256-25	Washer	5
4	22-7990	Side Plate Drive	2
5	3245-32	Set Screw	2
6	5-9820	Sprocket	1
7	3-6168	Square Key	1
8	22-8950	Bearing Cup	1
9	3296-39	Hex Locknut	11
10	26-6470	Chain Tensioning Arm	1
11	26-8950	Spring – Chain Tensioner	1
12	26-6070	Mount – Hex Shaft R.H.	1
13	3296-29	Locknut	4
14	40-8170	Disc Assembly	1
15	11-8010	Bracket – Dead Shaft	1
16	32108-94	Screw – Flat Head	4
17	3256-45	Washer	2
18	3290-301	Spring Washer	4
19	32128-12	Flange Nut	2
20	3296-6	Locknut	2
21	8-7950	Rear Shield	1
22	3272-5	Cotter Pin	8
23	11-8070	Tube – "U" Joint	1
24	283-31	Clevis Pin	1
25	32144-10	Screw – Thread Forming	14
26	32121-50	Roll Pin	2
27	252-89	Thrust Washer	3
28	32121-11	Roll Pin	2

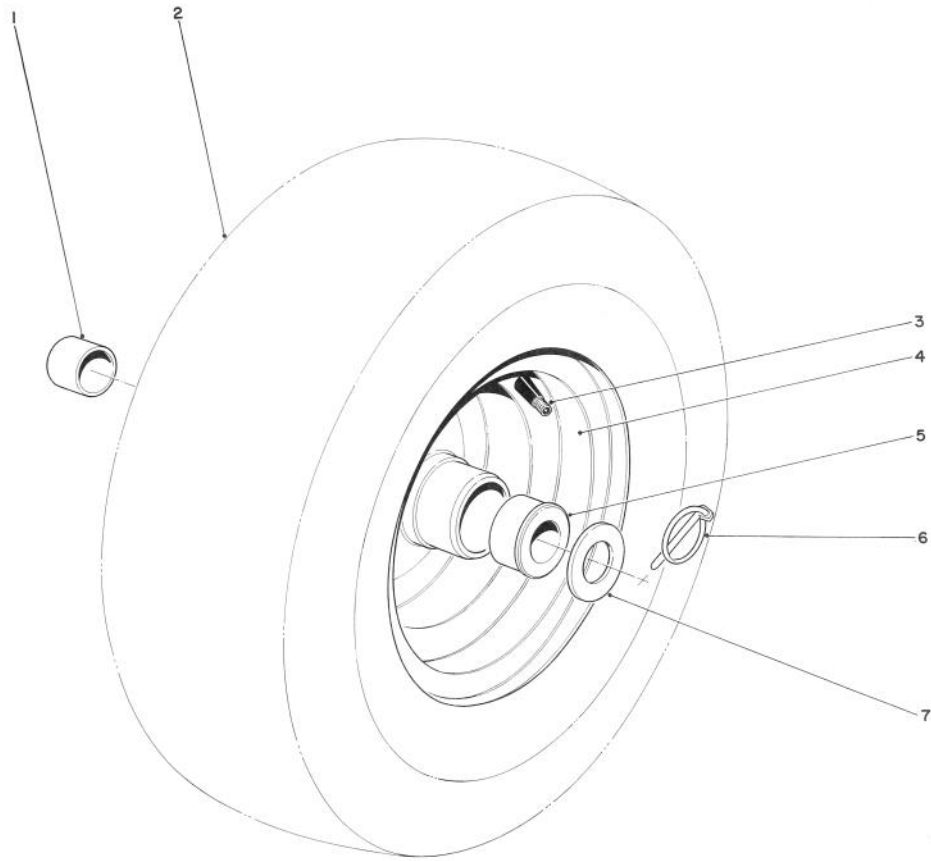
Ref. No.	Part No.	Description	No. Used
29	26-6330	Hex Shaft Mounting (Incl. Ref. #50)	1
30	32144-11	Screw – Thread Forming	4
31	11-8140	Shoulder Screw	4
32	3290-433	Retained Nut	2
33	10-3890	Spring – Extension	2
34	283-29	Clevis Pin	2
35	283-17	Clevis Pin	2
36	10-3910	Roller – Clutch	4
37	20-1050	Arm – Clutch Cam	2
38	283-16	Clevis Pin	2
39	3256-14	Washer	10
40	20-2290	Clutch Mounting Bracket	2
41	3274-42	Hex Socket Capscrew	4
42	26-5990	Wheel Clutch	2
43	10-3980	Thrust Washer	2
44	256-214	Thrust Bearing	2
45	10-3860	Collar – Clutch Mounting	2
46	32151-35	Ring – Retainer	2
47	20-1020	Bearing Flange	4
48	20-1010	Bearing Axle	2
49	41-8570	Retainer – Clutch	2
50	256-219	Bushing	1
51	5-7570	Washer – Friction Wheel Shaft	3
52	11-8090	Rod – Connecting	1
53	11-8060	Pivot – Shift Rod	1
54	11-3180	Spacer – Split	1
55	3274-26	Hex Socket Capscrew	2



## TRACTION ASSEMBLY (Continued)

Ref. No.	Part No.	Description	No. Used
56	20-4610	Collar	1
57	252-71	Thrust Bearing	1
58	11-8050	Slider Ring Collar	1
59	11-8080	Ring – Slider	2
60	20-3310	Hub – Traction Disc	1
61	23-4970	Friction Plate	1
62	322-3	Capscrew	4
63	11-7140	Shield – Lower	1
64	26-5950	Axle Shaft	1
65	3-0737	Thrust Washer	2
66	3257-23	Key – Hi Pro	6
67	256-269	Bushing	2
68	32149-1	Locknut	4
69	302-5	Grease Fitting	2
70	3254-8	Lockwasher – Int. Tooth	1
71	25-5190	Bulkhead (Incl. Ref. #67)	1
72	5-7410	Pulley – Drive	1
73	23-4950	Friction Plate Shaft	1
74	10-0070	Bearing Housing	2
75	3242-4	Set Screw	4
76	22-9190	Spacer	2
77	283-6	Clevis Pin	1
78	7-0846	Shoulder Bolt	1
79	26-8940	Roller – Chain Tensioner	1

Ref. No.	Part No.	Description	No. Used
80	11-8940	Shaft – Friction Wheel	1
81	251-260	Bearing	1
82	12-3270	Hex Washer Head Thread Forming Screw	2
83	323-8	Capscrew	1
84	8-9139	Auger Brake Assembly (Incl. Ref. #85)	1
85	40-8140	Brake Pad – Molded	1
86	3-8664	Thrust Washer	3
87	3290-383	Pushnut	1
88	23-7260	Lower Chain (Incl. Ref. #89)	1
89	2710-11	Connecting Link	1
90	8-8709	Sprocket (Incl. Ref. #69 & 91)	1
91	256-215	Bushing	2
92	23-7250	Spacer	1
93	5-9430	Upper Chain (Incl. Ref. #95)	1
94	20-2940	Bracket – Clutch Rod	1
95	2710-6	Connecting Link	1
96	32152-4	Nut – Lock	1
97	53-7620	Spring – Auger Disengage	1
98	3-4244	Pulley – Idler	1
99	42-3560	Bolt – Shoulder	1

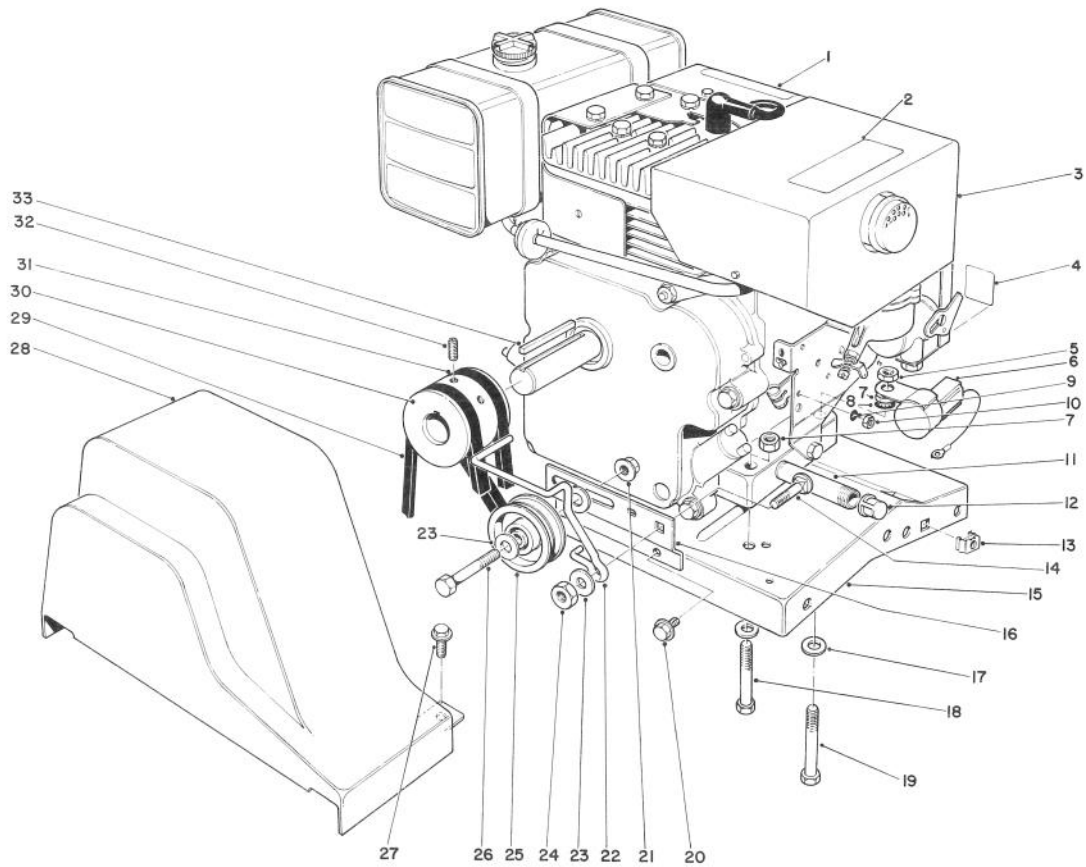


## WHEEL ASSEMBLY

Ref. No.	Part No.	Description	No. Used
1	256-205	Bushing	2
2	231-92	Tire	2
3	232-27	Valve Stem	2
4	26-9880	Wheel & Hub Assembly (Incl. Ref. # 1 & 5)	2

Ref. No.	Part No.	Description	No. Used
5	256-117	Wheel Bushing	2
6	3290-243	Klip Pin	2
7	3-8664	Thrust Washer	2
*	23-2340	Tire Chain Optional (Set of 2)	1
*†	232-3	Inner Tube	2

\*Not Illustrated  
†Service Replacement Part

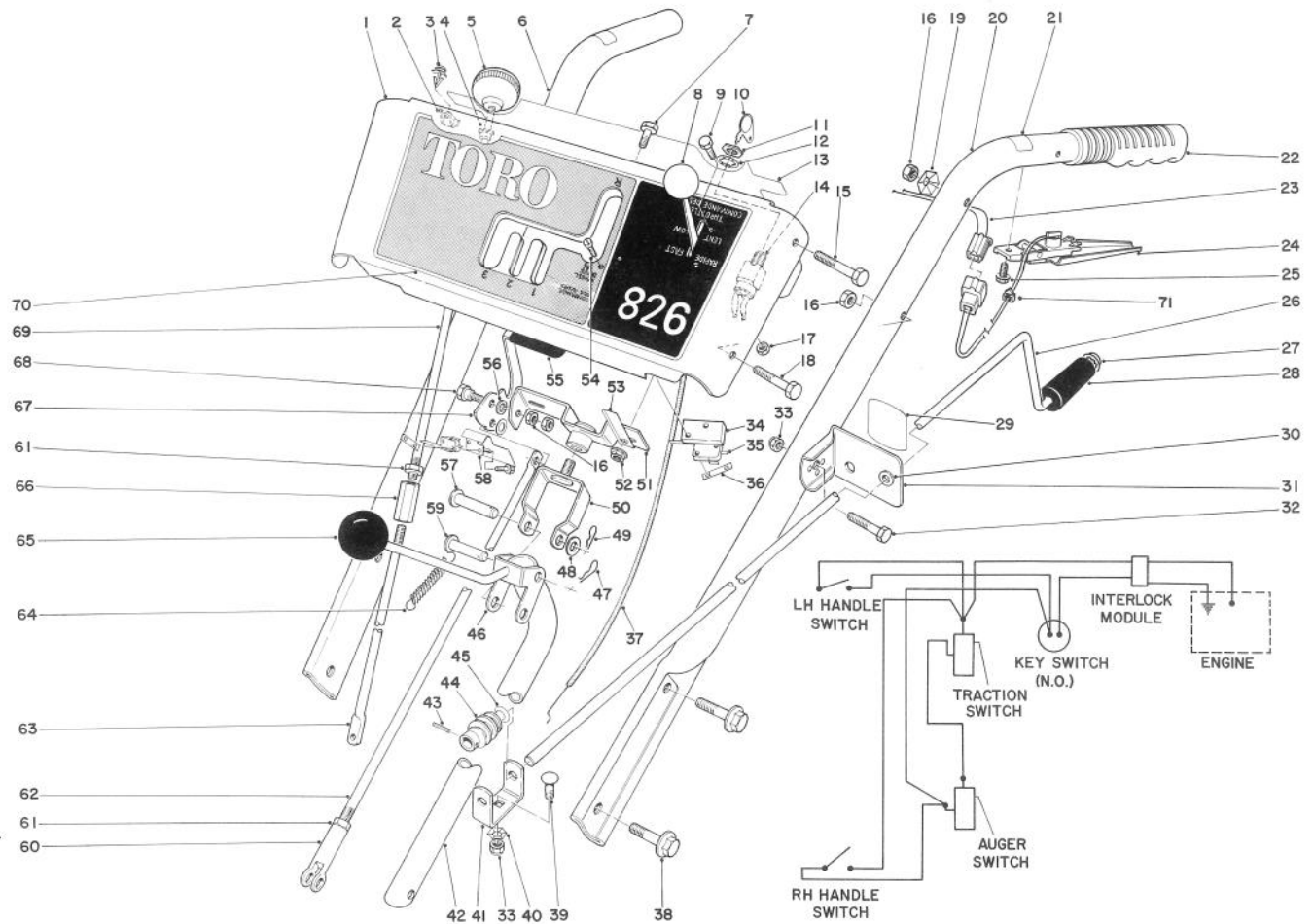


## ENGINE ASSEMBLY

Ref. No.	Part No.	Description	No. Used
1	54-9750	Decal — Hazards Caution	1
2	53-7680	Decal — Hot Surface Warning	1
3	37-4840	Engine	1
4	29-6400	Decal — Choke	1
5	32153-3	Locknut	1
6	41-8610	Interlock Module	1
7	3296-29	Locknut	4
8	3254-2	Int. Tooth Lockwasher	1
9	3254-10	Int. Tooth Lockwasher	1
10	3296-54	Locknut	1
11	289-20	Pipe Nipple	1
12	288-4	Pipe Cap	1
13	3290-433	Retained Nut	2
14	3231-27	Carriage Bolt	1
15	22-9030	Engine Base	1
16	41-8580	Bracket — Belt Idler	1
17	3256-23	Washer	4

Ref. No.	Part No.	Description	No. Used
18	322-9	Capscrew	3
19	322-10	Hex. Hd. Capscrew	1
20	32144-15	Hex Forming Screw	2
21	3290-357	Locknut	1
22	41-8590	Belt Guide	1
23	3256-24	Washer	3
24	3296-39	Locknut	1
25	244-63	Idler Pulley	1
26	323-8	Capscrew	1
27	32144-10	Self Tapping Screw	2
28	17-6550	Belt Guard	1
29	26-9670	V-Belt, Auger	1
30	21-4100	Engine Pulley	1
31	17-6540	V-Belt, Traction	1
32	3246-14	Set Screw	2
33	5-0930	Key	1

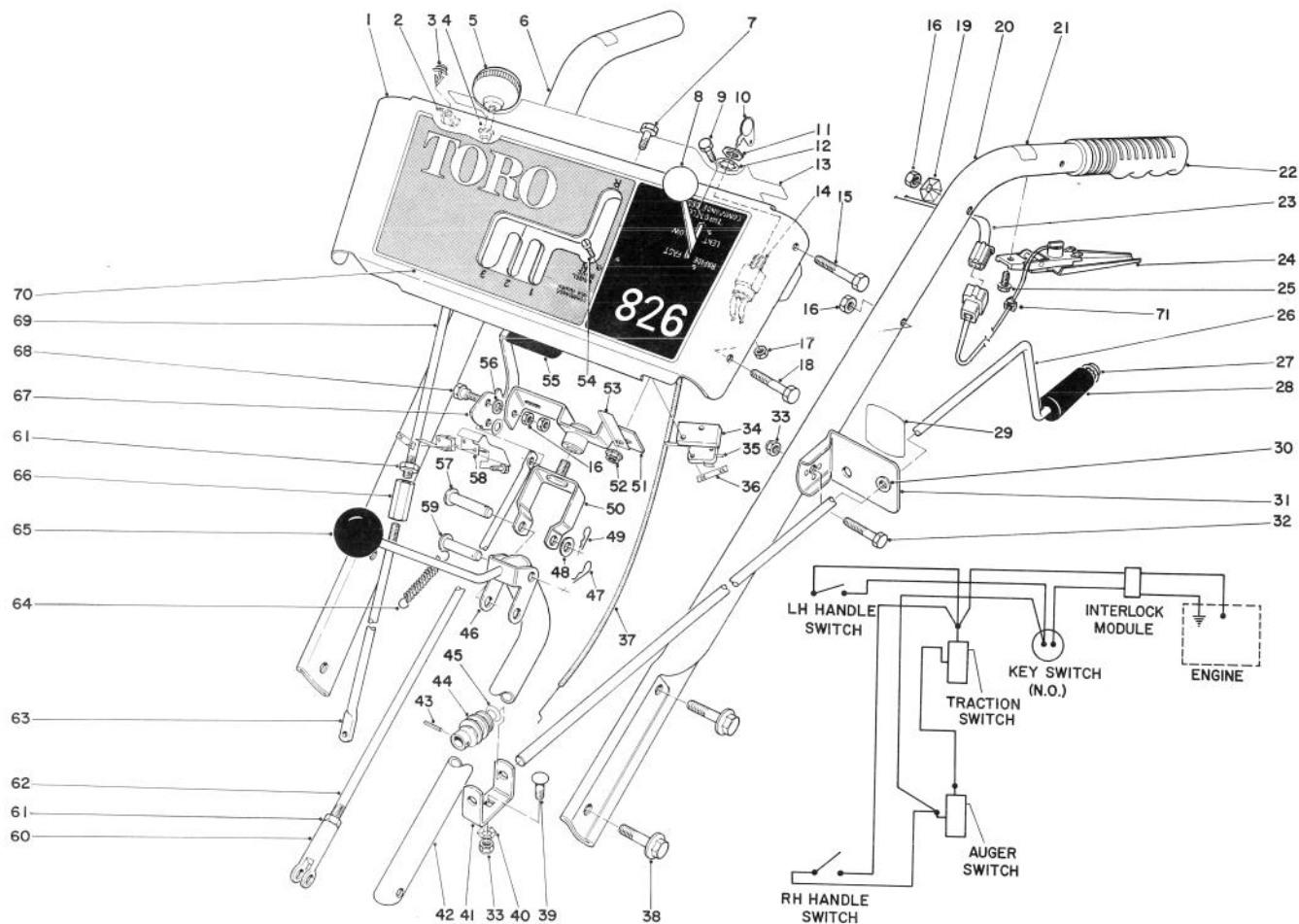




## HANDLE ASSEMBLY

Ref. No.	Part No.	Description	No. Used
1	8-1559	Escutcheon Plate (Incl. Ref. #13 & 70)	1
2	43-7450	Clamp — Wire	2
3	43-7460	Mounting Stud	2
4	256-240	Nyliner	2
5	233-10	Knob	2
6	40-8460	Handle — Right	1
7	321-3	Capscrew	2
8	233-36	Knob	1
9	32140-99	Hex Head Screw	2
10	33-2010	Keys	2
11	218-461	Hex Nut	1
12	3254-5	Lockwasher	1
13	29-6330	Decal — Escutcheon Back	1
14	40-8240	Key Switch (Incl. Ref. #11 & 12)	1
15	321-11	Capscrew	2
16	32152-4	Locknut	8
17	3296-2	Locknut	2
18	321-9	Capscrew	2
19	3290-257	Washer Pyramidal	2
20	40-8450	Handle — Left	1
21	29-6360	Decal — Safety Interlock	2

Ref. No.	Part No.	Description	No. Used
22	6-0450	Handle Grip	2
23	40-8640	Wire Harness	1
24	40-9690	Interlock Handle & Switch (Incl. Ref. #71)	2
25	12-3270	Screw — Special	2
26	41-8640	Rod — Chute Control	1
27	3290-320	Push-On Speed Nut	1
28	40-8230	Chute Control Grip	1
29	29-6370	Decal — Chute Direction	1
30	256-249	Nyliner	1
31	6-3069	Bracket — Chute Control Mtg. (Incl. Ref. #29 & 30)	1
32	322-9	Capscrew	1
33	3296-29	Locknut	2
34	22-7950	Pad — Switch Mounting	1
35	40-8200	Micro Switch	2
36	3290-354	Speed Nut	2
37	8-7790	Throttle Control	1
38	3234-1	Flange Screw	4
39	3230-2	Carriage Bolt	1
40	3290-238	Pyramidal Washer	1
41	11-7110	Bracket — Worm	1
42	29-6450	Rod — Traction Shift	1



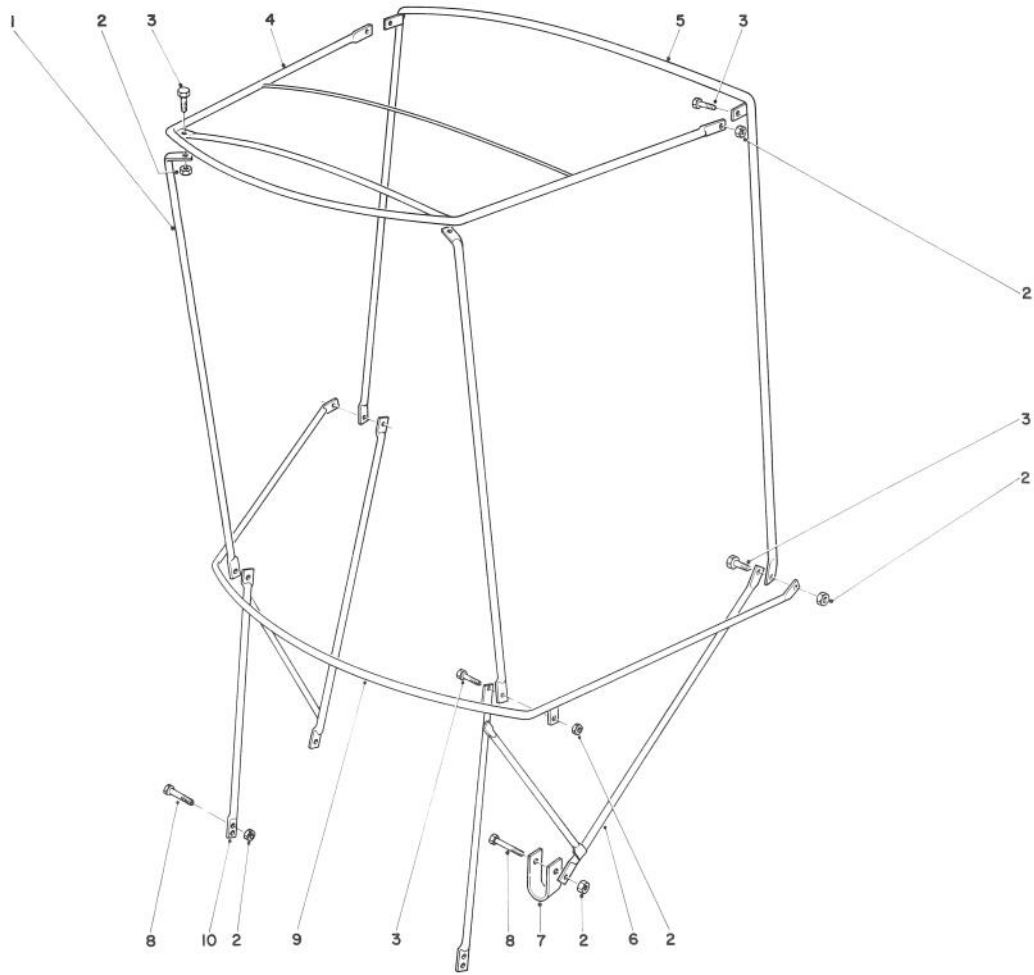
## HANDLE ASSEMBLY (Continued)

Ref. No.	Part No.	Description	No. Used
43	32121-50	Roll Pin	1
44	8-8600	Worm Gear — Chute	1
45	3290-212	Spring Washer	1
46	26-9370	Shift Rod	1
47	3290-307	Hair Pin Cotter	1
48	3256-6	Washer	1
49	3290-322	Hair Pin Cotter	1
50	29-6490	Pivot Bracket	1
51	8-7930	Swivel Block	1
52	32128-10	Flange Locknut	2
53	26-9410	Retainer — Wire	1
54	3290-313	Machine Screw	4
55	11-8970	Grip — Auger Handle	1
56	3256-23	Washer	2
57	283-5	Clevis Pin	1
58	22-9300	Bracket — Switch	1

Ref. No.	Part No.	Description	No. Used
59	283-15	Clevis Pin	1
60	39-4640	Clevis	1
61	3220-3	Jam Nut	3
62	29-6460	Drag Link	1
63	221-7970	Rod — Wheel Clutch, Lower	2
64	8-9900	Spring — Control Rod	1
65	233-21	Knob	1
66	22-7940	Coupling — Wheel Clutch Rod	2
67	17-6620	Handle — Auger Clutch	1
68	11-9030	Shoulder Bolt	2
69	29-6470	Rod — Wheel Clutch	2
70	29-6310	Decal — Escutcheon	1
71	17-9120	Mount — Wire	6
*	3290-378	Cable Tie	2
*	36-0950	Traction Shift Rod Assembly (Incl. Ref. #42, 46, 47 & 49)	1

\*Not Illustrated

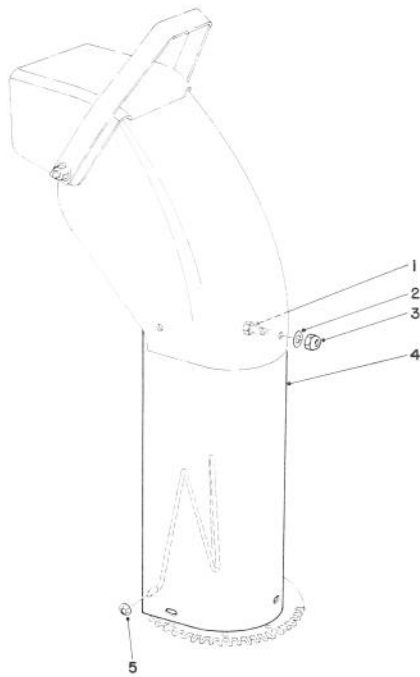




## SNOW CAB ASSEMBLY MODEL 42-3380 (Optional)

Ref. No.	Part No.	Description	No. Used
1	12-8040	Front Corner Post	2
2	32153-4	Locknut	12
3	321-4	Capscrew	8
4	12-8010	Top Frame	1
5	12-8030	Rear Vertical Bow	1

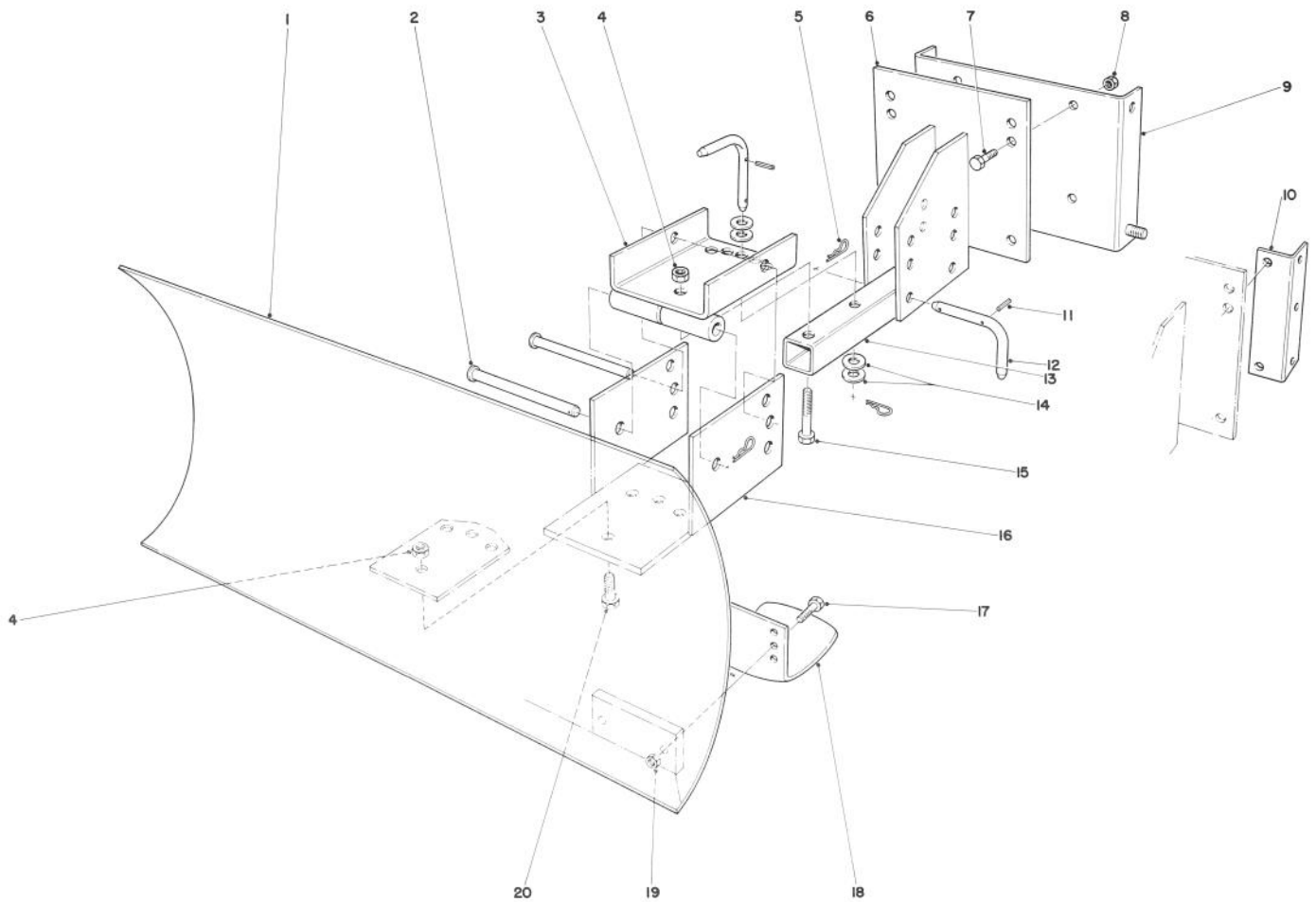
Ref. No.	Part No.	Description	No. Used
6	42-4060	Attaching Bracket L.H.	1
7	12-8050	"U" Clamp	2
8	321-11	Capscrew	4
9	12-8020	Horizontal Curved Bow	1
10	42-4050	Attaching Bracket R.H.	1



### CHUTE EXTENSION KIT 26-1100 (Optional)

Ref. No.	Part No.	Description	No. Used
1	322-2	Hex Hd. Capscrew	6
2	3256-23	Washer	6
3	32152-1	Locknut	6

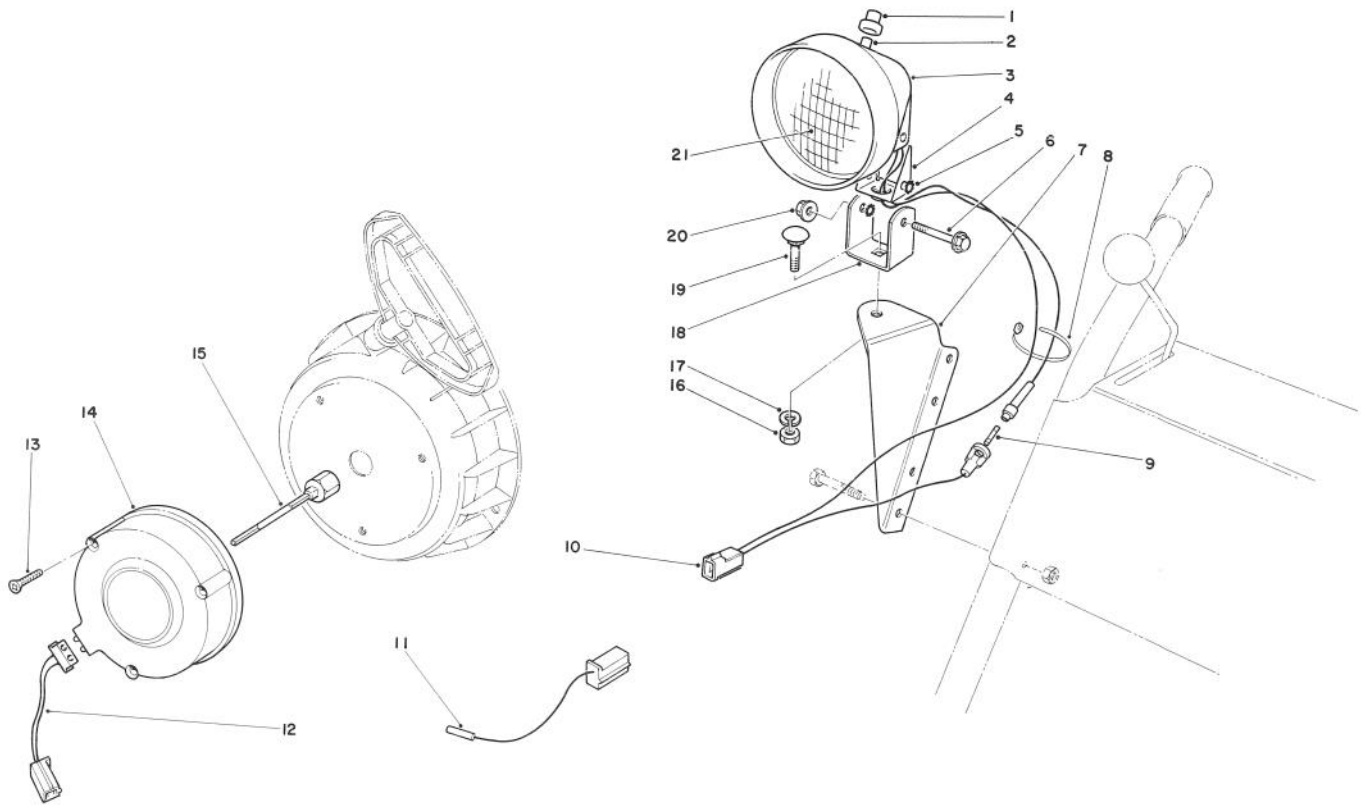
Ref. No.	Part No.	Description	No. Used
4	26-1110	Upper Chute Extender	1
5	3290-326	Pushnuts	2



## GRADER BLADE ASSEMBLY MODEL NO. 59099 (Optional)

Ref. No.	Part No.	Description	No. Used
1	7-4374	Blade	1
2	283-38	Pin	2
3	20-5090	Swivel Bracket	1
4	32152-3	Locknut	5
5	3290-322	Hair Pin Cotter	5
6	20-5170	Mounting Plate	1
7	323-6	Capscrew	4
8	32152-2	Locknut	4
9	22-4920	Mounting Plate Bracket (used with 826 and 1132 only)	1
10	39-7850	Mounting Rail (used with 3521, 421 & 521 units only)	2

Ref. No.	Part No.	Description	No. Used
11	32121-45	Roll Pin	3
12	20-5210	Pivot Pin (Incl. Ref. #11)	3
13	20-5140	Blade Tongue	1
14	3256-5	Flat Washer	4
15	325-11	Capscrew	1
16	20-5130	Blade Adjustment Plate	1
17	322-6	Capscrew	4
18	7-1023	Skid	2
19	32152-1	Locknut	4
20	325-5	Capscrew	4



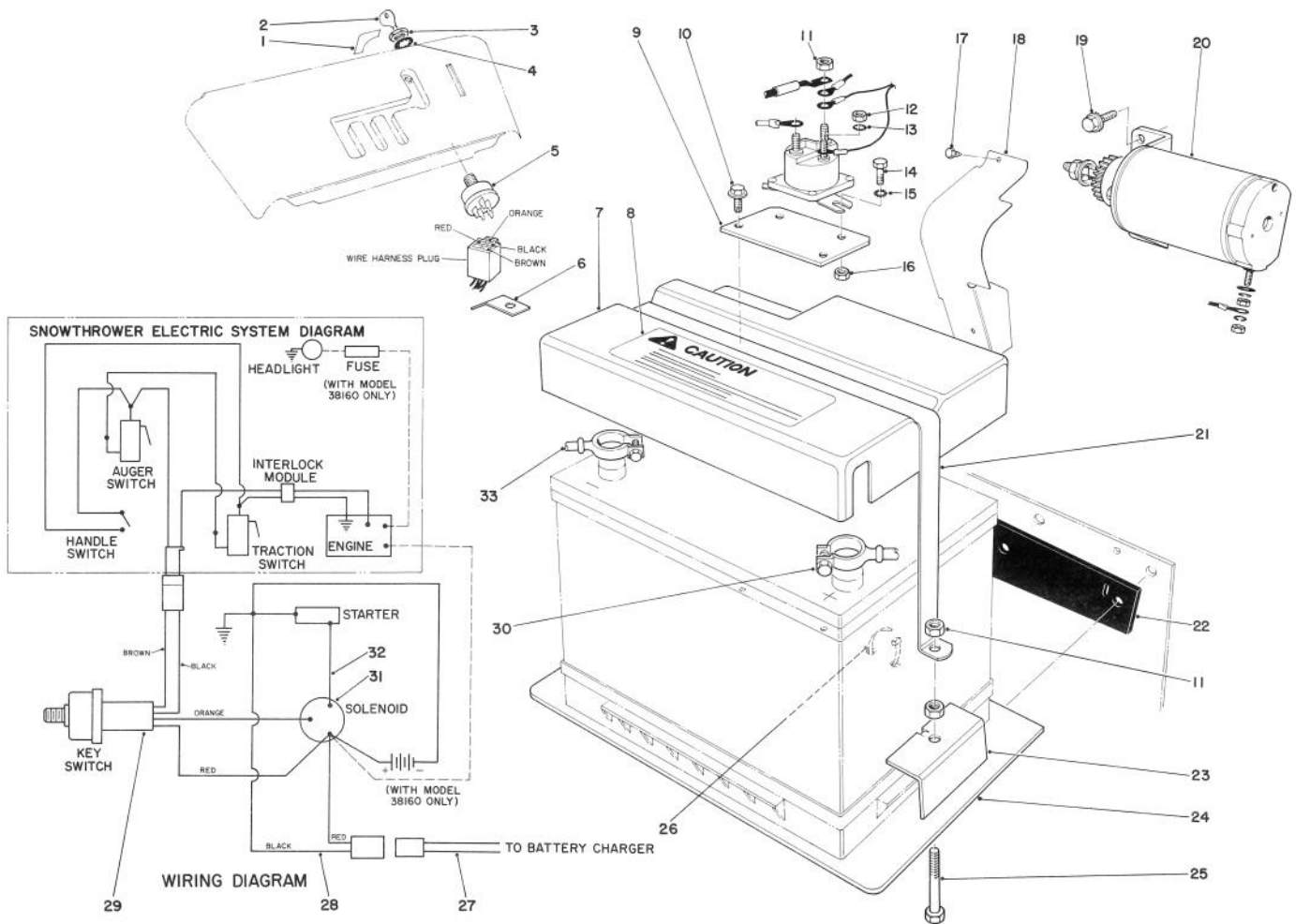
## LIGHT KIT NO. 54-9820 (Optional)

Ref. No.	Part No.	Description	No. Used
1	218-473	Boot — Switch	1
2	218-553	Switch Assembly	1
3	218-552	Bucket — Headlamp	1
4	218-554	Bracket	1
5	3255-8	Washer — Lock	2
6	322-13	Screw — Hex Flange Hd.	1
7	54-9830	Mount — Lamp	1
8	3290-378	Tie Wrap	2
9†		Fuse — 7½ Amp	1
10	218-555	Wire Assembly	1
11	54-9810	Wire Assembly	1
12	2210-272	Connector — Light	1

Ref. No.	Part No.	Description	No. Used
13	2210-273	Screw — Self Tapping	3
14	2210-274	Alternator	1
15	2210-268	Shaft — Alternator 3"	1
16	3217-7	Nut — Hex	1
17	3253-21	Washer — Lock	1
18	218-556	Bracket — U	1
19	3231-2	Bolt — Carriage	1
20	32128-35	Nut — Flange Lock	1
21	218-15	Lens — Sealed Beam	1
*	54-9870	Headlamp Assembly Complete (Incl. Ref. #1-6, 9-10 & 16-21)	1

\*Not Illustrated

12 †Obtain Locally

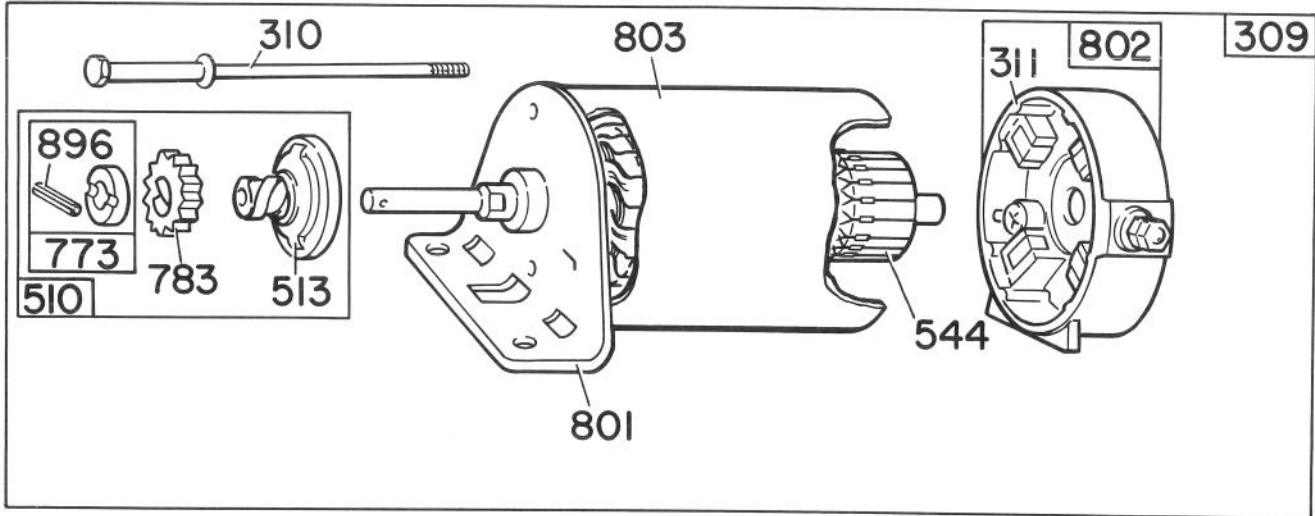


## 12 VOLT STARTING MOTOR KIT 42-3370 (Optional)

Ref. No.	Part No.	Description	No. Used	Ref. No.	Part No.	Description	No. Used
1	38-0640	Decal—Key Switch	1	19	32140-45	Hex Hd. Screw	2
2	33-2010	Key (Set of 2)	1	20†		Starter Motor & Pinion Assy.	1
3	218-461	Hex Nut	1	21	22-8850	Strap Battery Cover	1
4	3254-5	Lockwasher	1	22	24-6150	Battery Isolation Pad	1
5	42-3990	Starter Switch (Incl. Ref. #3&4)	1	23	22-8870	Battery Hold Downs	2
6	22-9060	Bracket Wire Clamp	1	24	22-8830	Battery Mounting Plate	1
7	8-2839	Battery Cover (Incl. Ref. #8)	1	25	322-10	Capscrew	2
8	38-0630	Decal - Caution	1	26	3290-378	Tie Wrap	5
9	22-8880	Solenoid Mounting Bracket	1	27	29-7830	Wire Assembly	1
10	32144-10	Thread Forming Screw	2	28	29-7820	Wire Assembly	1
11	3217-6	Hex Nut	6	29	42-4000	Wire Harness	1
12	3219-14	Hex Nut	1	30	22-9320	Battery Cable — Pos.	1
13	3254-1	Lockwasher	1	31	6-1600	Solenoid	1
14	321-2	Capscrew	2	32	22-9310	Wire Assembly	1
15	3255-7	Lockwasher	2	33	22-9330	Battery Cable — Neg.	1
16	3296-42	Locknut	2	*	26-3870	Charger 110V (U.S. & Canada)	1
17	32108-57	Self Tapping Screw	2	*	26-7140	Charger 220V (Europe)	1
18	20-7060	Pinion Shield	1				

\*Not illustrated; is not included with kit.

†Obtain from your local Briggs & Stratton dealer part no. 393852.

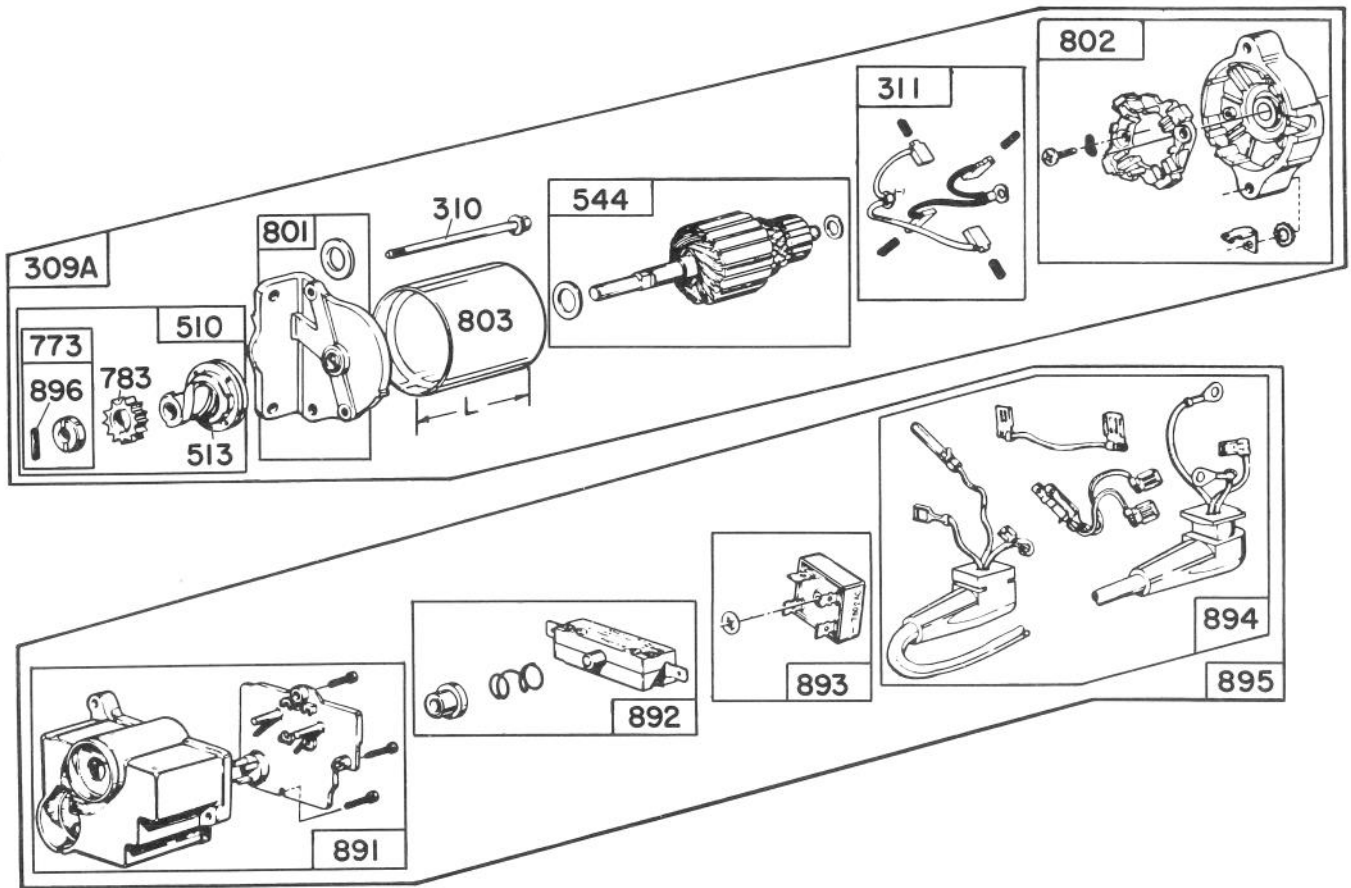


## 12 VOLT STARTER MOTOR BRIGGS & STRATTON NO. 393852

Ref. No.	Part No.	Description	No. Used	Ref. No.	Part No.	Description	No. Used
309	391177	Motor and Drive Assembly	1	773	391462	Retainer & Pin	1
310	93933	Thru Bolt Assembly	2	783	280104	Gear	1
311	391705	Brush Assembly	2	801	392061	End Cap Assembly — Drive	1
510	391461	Drive Assembly (Incl. Ref. # 513, 773, 783 & 896)	1	802	390846	End Cap Assembly — Commutator (Incl. Ref. #311)	1
513	391135	Clutch Assembly	1	803	391167	Housing Assembly	1
544	391160	Armature Assembly	1	896	93754	Pin — Roll	1

Note: Obtain replacement parts from your local Briggs & Stratton Dealer.





## STARTER MOTOR KIT MODEL NO. 37-4630 (Optional)

Ref. No.	Part No.	Description	No. Used
309	393851	Motor & Drive Assembly	1
310	93934	Thru Bolt Assembly	1
311	393612	Brush Assembly	1
510	391461	Drive Assembly (Incl. Ref. # 513, 773, 783 & 896)	1
513	391135	Clutch Assembly	1
544	393607	Armature Assembly	1
773	391462	Retainer & Pin (Incl. Ref. #896)	1
783	280104	Gear	1
801	393228	Drive End Cap Assembly	1
802	393833	Comm. End Cap Assembly	1

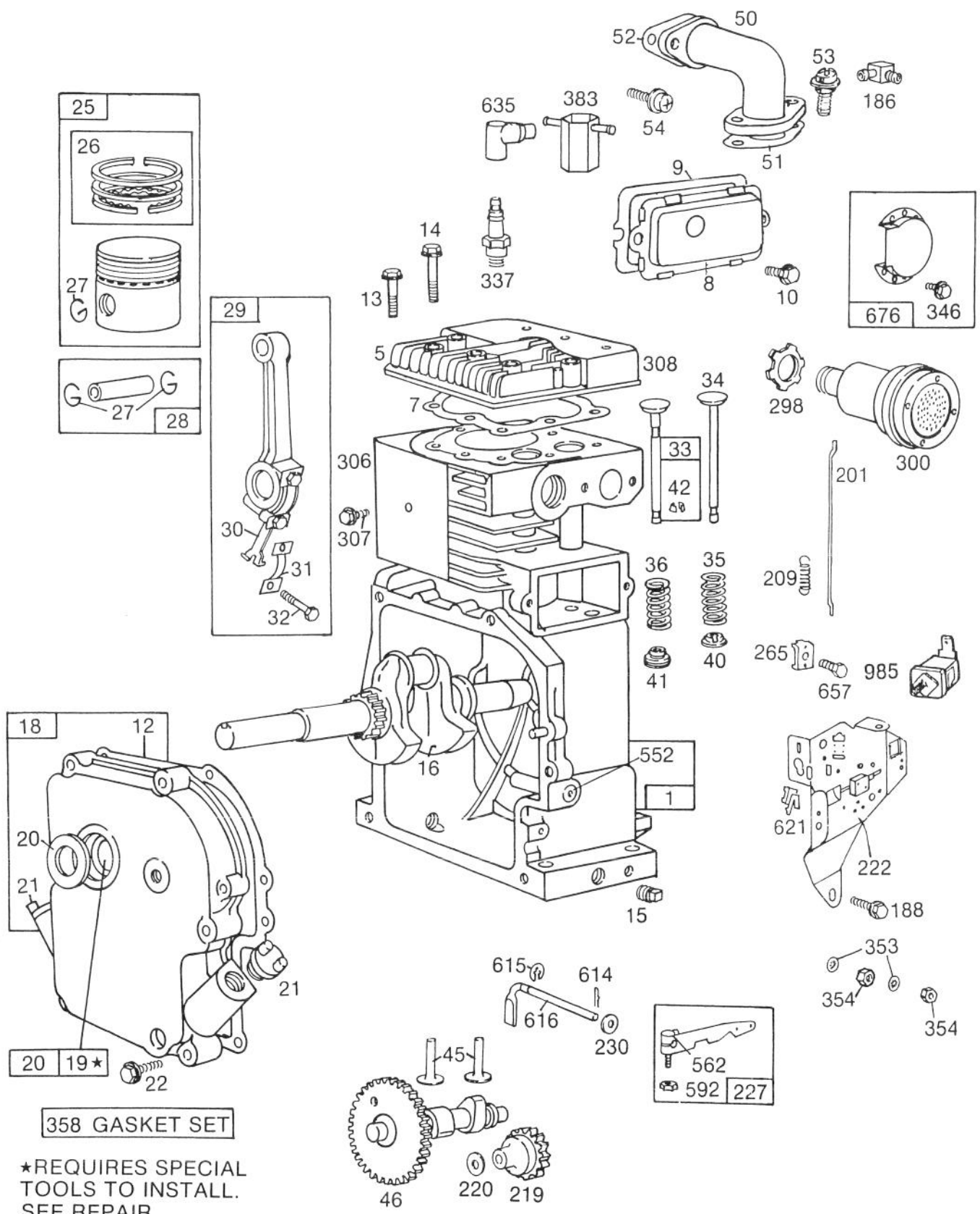
Ref. No.	Part No.	Description	No. Used
803	393433	Housing Assembly	1
891	393705	Housing Group	1
892	393708	Switch Group	1
893	393707	Rectifier	1
894	393706	Lead Group	1
895	393486	Control Group	1
896	93754	Pin — Roll	1
*†	38-0070	Bracket Switch	1
*†	3296-2	Nut	3
*†	3252-6	Fillister Hd. Machine Screw	3

\*Not Illustrated

†Obtain from The Toro Co.

Note: Obtain replacement parts from your local Briggs & Stratton Dealer.

# ENGINE BRIGGS & STRATTON MODEL NO. 190406-2999-01



**358 GASKET SET**

★REQUIRES SPECIAL TOOLS TO INSTALL. SEE REPAIR INSTRUCTION MANUAL.

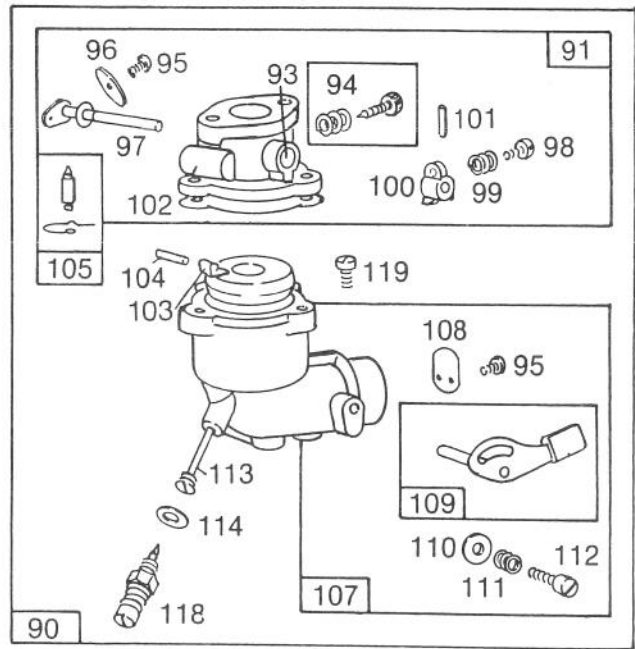
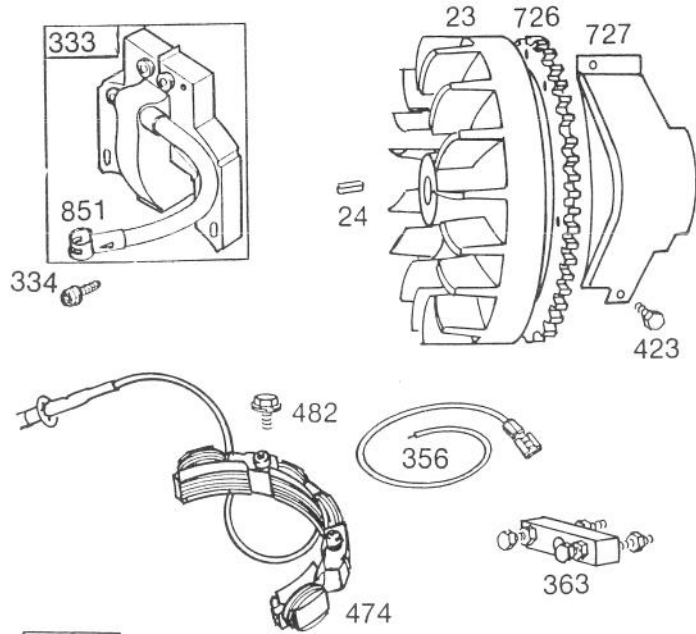
# ENGINE BRIGGS & STRATTON MODEL NO. 190406-2999-01

Ref. No.	Part No.	Description	No. Used
1	396178	Cylinder Assembly	1
5	211778	Head — Cylinder	1
*7	270430	Gasket — Cylinder Hd.	1
8	390321	Breather Assembly	1
*9	27803	Gasket — Valve Cover	1
10	93394	Screw	1
*12	27750	Gasket — Crankcase Cover — 1/64" thick	1
	27876	Gasket — Crankcase Cover — .005" thick	1
	27877	Gasket — Crankcase Cover — .009" thick	1
13	93211	Screw — Cylinder Head (2-21/32" long)	1
14	93113	Screw — Cylinder Head (2-5/16" long)	1
15	91084	Plug — Oil Drain	1
16	261077	Crankshaft	1
18	299167	Cover Assembly — Crankcase	1
19	295964	Bushing — Crankcase Cover <b>Note:</b> Requires special tools for installation.	1
20	391086	Seal — Oil	1
21	66768	Plug — Oil Filter	1
22	93585	Screw — Crankcase Cover Mtg.	1
25	391673	Piston Assy. — Std.	1
	391674	Piston Assy. — .010" O.S.	1
	391675	Piston Assy. — .020" O.S.	1
	391676	Piston Assy. — .030" O.S. <b>PISTON RING SETS:</b> <b>Note:</b> For Chrome Ring Set — Std. Size — Order No. 299743.	1
26	391669	Ring Set — Piston — Std.	1
	391670	Ring Set — Piston — .010" O.S.	1
	391671	Ring Set — Piston — .020" O.S.	1
	391672	Ring Set — Piston — .030" O.S.	1
27	68546	Lock — Piston Pin	1
28	295840	Pin Assy. — Piston — Std.	1
	295841	Pin Assy. — Piston — .005" O.S.	1
29	390401	Rod Assy. — Connecting <b>Note:</b> For Connecting Rod with .020" undersize Crankpin Bore — Order No. 390773.	1
30	222113	Dipper — Connecting Rod	1
31	222114	Lock — Connecting Rod Screw	1
32	92659	Screw — Connecting Rod	1
33	390419	Valve — Exhaust	1

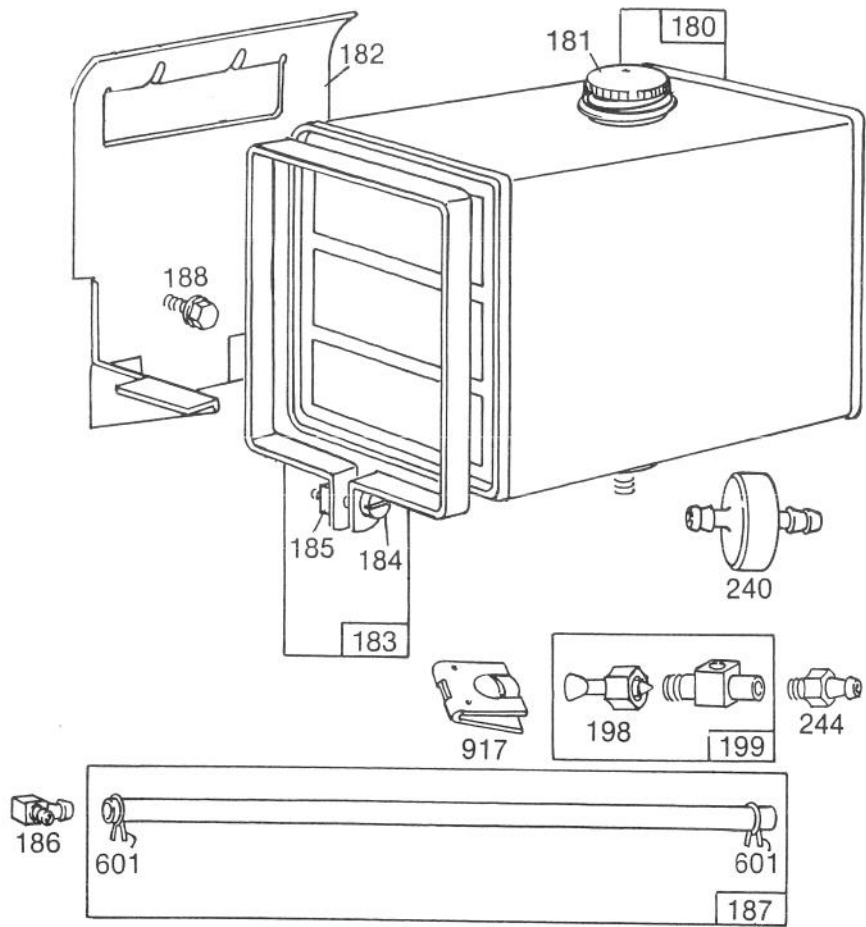
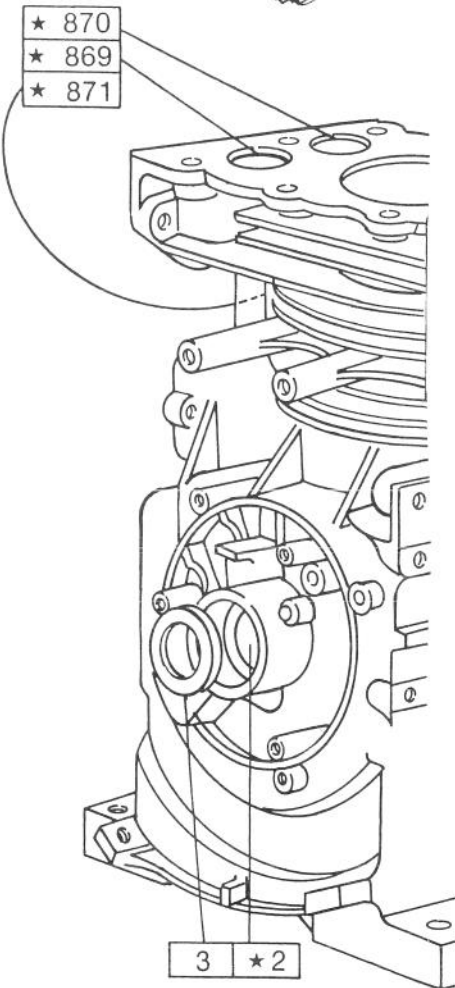
Ref. No.	Part No.	Description	No. Used
34	261055	Valve — Intake	1
35	65906	Spring — Intake Valve	1
36	26828	Spring — Exhaust Valve	1
40	221596	Retainer — Intake Valve	1
41	292260	Rotocoil — Exhaust Valve	1
42	93630	Retainer — Exhaust Valve Rotocoil	2
45	260933	Tappet — Valve	1
46	211689	Gear — Cam	1
50	212478	Elbow — Intake	1
*51	270684	Gasket — Carb. Mtg.	1
*52	27828	Gasket — Intake Elbow Mounting	1
53	93357	Screw — Carburetor	1
54	93208	Screw — Intake Elbow Mounting	1
186	67218	Connector — Fuel Pipe	1
188	93535	Screw	1
201	260872	Link — Governor	1
209	261126	Spring — Governor	1
219	391737	Gear — Governor	1
220	221551	Washer — Thrust	1
222	399151	Plate — Governor Control	1
227	391965	Lever Assy. — Governor	1
230	222450	Washer — Governor Crank	1
265	221535	Clamp — Casing	1
298	261409	Locknut — Muffler	1
300	393010	Muffler — Exhaust	1
306	222830	Shield — Cylinder	1
307	93163	Screw — Cylinder Shield Mtg.	1
308	221901	Cover — Cylinder Head	1
337	293918	Plug — Spark (1½" High — 37 M.M.) (Resistor Type)	1
346	93705	Screw	1
353	92791	Washer — Lock — Shakeproof	1
354	90576	Nut — Hex	1
358	299577	Gasket Set	1
383	89838	Wrench — Spark Plug	1
552	231056	Bushing — Governor Crank	1
562	92613	Bolt — Governor Lever	1
592	231082	Nut — Hex	1
614	93306	Cotter — Hair Pin	1
615	93307	Retainer — E-Ring	1
616	231057	Crank — Governor	1
621	396847	Switch — Stop	1
635	66538	Elbow — Spark Plug	1
657	93496	Screw	1
676	393757	Deflector — Exhaust	1
985	398525	Insulator Assy.	1

\*Included in Gasket Set — Part No. 299577.

# ENGINE BRIGGS & STRATTON MODEL NO. 190406-2999-01 (Continued)



121 CARBURETOR OVERHAUL KIT



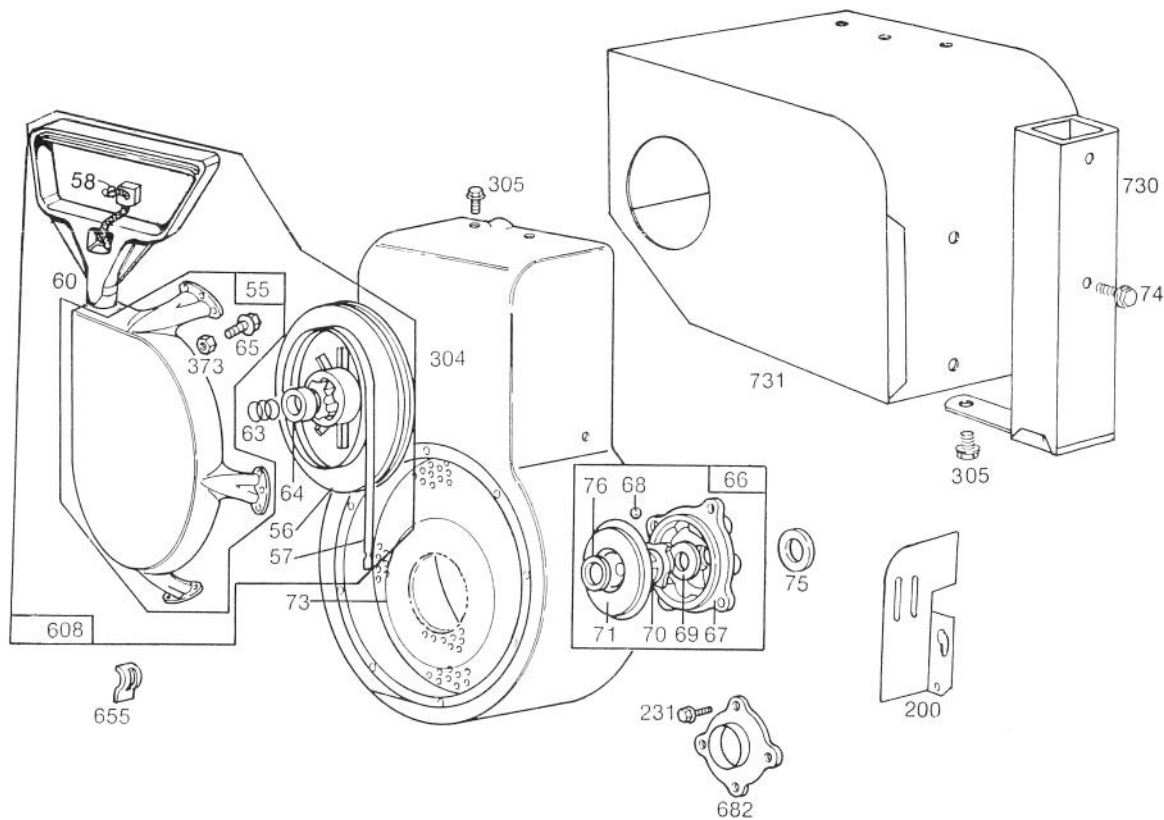
★REQUIRES SPECIAL TOOLS TO INSTALL.  
SEE REPAIR INSTRUCTION MANUAL.

# ENGINE BRIGGS & STRATTON MODEL NO. 190406-2999-01 (Continued)

Ref. No.	Part No.	Description	No. Used
2	295962	Bushing — Cylinder <b>Note:</b> Requires special tools for installation.	1
3	294606	Seal — Oil	1
23	391983	Flywheel and Ring Gear Assy. — Magneto For use on engines <i>WITH ALTERNATOR</i> (Includes aluminum ring gear.) For use only with starter motors with Plastic Drive Gear.	1
24	222698	Key — Flywheel	1
90	391889	Carburetor Assembly	1
91	399443	Body Assembly — Upper Carburetor	1
93	23108	Bushing — Throttle Shaft	1
†94	292681	Valve Assy. — Carburetor Idle	1
95	93499	Screw — Throttle and Choke Valve Mtg.	1
96	62940	Valve — Throttle	1
97	298826	Shaft and Lever — Throttle	1
98	91920	Screw — Machine, Fil. Hd.	1
99	26157	Spring — Throttle Adjustment	1
100	61967	Stop — Throttle	1
101	93043	Pin — Throttle Stop	1
†102	27918	Gasket — Carburetor Body	1
103	99333	Float — Carburetor	1
†104	230896	Pin — Float Hinge	1
105	394681	Valve — Fuel Inlet	1
107	399442	Body Assembly — Lower Carburetor	1
108	62872	Valve — Choke	1
109	391888	Shaft and Lever — Choke	1
110	222712	Washer — Choke Lever	1
111	26155	Spring — Choke Lever	1
112	23123	Screw — Choke Lever	1
†113	398202	Nozzle — Carburetor	1
†114	68667	Gasket — Nozzle	1
†118	99525	Valve — Needle	1
119	94152	Screw — Hex. Hd.	1
121	398235	Carburetor Overhaul Kit	1
180	290816	Tank Assy. — Fuel (4 quart)	1

Ref. No.	Part No.	Description	No. Used
181	297866	Cap — Fuel Tank	1
182	221935	Bracket — Fuel Tank	1
183	191367	Strap Assembly — Fuel Tank	1
184	91257	Screw — Machine, Fil. Hd.	1
185	90970	Nut — Square	1
186	67218	Connector — Fuel Pipe	1
187	296004	Pipe — Fuel (Flexible) (23" long)	1
188	93535	Screw	1
198	293934	Valve — Fuel Shut-Off	1
199	297563	Outlet — Fuel Tank	1
240	298090	Filter — Fuel (in Fuel Pipe)	1
244	230318	Connector — Fuel Pipe	1
333	398265	Armature — Magneto	1
334	93381	Screw Armature Mounting	1
356	398838	Wire — Ground	1
363	19203	Puller — Flywheel	1
423	93712	Screw <b>Uses:</b>	2
	93713	Washer — Lock	2
474	391595	Stator and Bracket — Alternator	1
482	93621	Screw	1
601	93053	Clamp — Fuel Pipe	1
726	392134	Gear — Ring (Aluminum — Includes mounting Parts)	1
727	221940	Guard — Ring Gear <b>Uses:</b>	
	93712	Screw	2
	93713	Lockwasher	2
851	221798	Terminal — Ignition Cable	1
869	211661	Seat — Intake Valve (Standard)	1
870	211661	Seat — Exhaust Valve (Std.) (for options see Repair Manual)	1
871	231218	Guide — Exhaust and Intake Valve (Brass)	1
917	223271	Valve Handle — Fuel Shut-Off	1

\*Included in Carburetor Overhaul Kit — Part No. 398235.



## ENGINE BRIGGS & STRATTON MODEL NO. 190406-2999-01 (Continued)

Ref. No.	Part No.	Description	No. Used
55	398099	Housing — Rewind Starter	1
56	295871	Pulley — Rewind Starter	1
57	294303	Spring — Rewind Starter	1
58	66884	Rope — Rewind Starter — 63" Long	1
60	398101	Grip — Starter Rope	1
63	260414	Spring — Ratchet	1
64	230543	Adapter — Ratchet Spring	1
65	93105	Screw — Rewind Starter Housing Mounting	1
66	394558	Clutch Assy. — Rewind Starter	1
67	394897	Housing — Rewind Starter Clutch	1
68	63770	Ball — Clutch	1
69	66718	Washer — Thrust	1

Ref. No.	Part No.	Description	No. Used
70	298799	Ratchet—Rewind Starter Clutch	1
71	221653	Washer — Retainer	1
73	221796	Screen — Rewind Starter	1
74	93042	Screw	1
75	220865	Washer — Spring	1
76	68238	Washer — Ratchet Sealing	1
200	221760	Guide — Air	1
231	93064	Screw	1
304	390516	Housing — Blower	1
305	93158	Screw	1
373	92987	Nut — Hex	1
608	397982	Starter Assy. — Rewind	1
655	222598	Anchor — Spring	1
682	211516	Shield — Starter Clutch	1
730	299384	Stack — Carburetor	1
731	399157	Hood — Snow	1