

LAWN-BOY®

Gold Series® Lawnmower

Model No. 10655 - 240000001 and up.

Parts Catalog

Ordering Replacement Parts

To order replacement parts, please supply the part number, the quantity, and the description of each part desired.

Understanding Reference Numbers

Each Identified part in an illustration has a reference number. The reference number for a part also appears in the parts list, along with other information about the part.

This catalog uses two special reference number formats, one to indicate parts in a service assembly and another to indicate the quantity of a given part in an illustration.

Service Assembly Reference Numbers

Parts in service assemblies have reference numbers in the form a:b. The a represents the reference number of the entire service assembly and the b represents a sequential number unique to each part within the service assembly.

For example, a wheel assembly might be identified by reference number 6, the tire by 6:1, the valve by 6:2, and the wheel by 6:3. When you order the assembly identified by reference number 6, you receive all parts identified by reference numbers 6:1, 6:2, and 6:3. However, you may also order any part individually. Reference numbers of this type appear in illustrations and in part lists.

Reference Numbers Indicating Quantity

In an illustration, if a reference number indicates more than one part, the reference number has the form nX y. The n represents the quantity of the part, the X is the multiplication symbol, and the y represents the reference number.

For example, in an illustration, the reference number 2X 37 means that two of the parts identified by reference number 37 are indicated.

Contents

Description	Page	Description	Page
Deck, Side Chute, and Rear Door Assembly	3	Fan Cover Assembly Honda Model No. Gcv160a sta1	16
RWD Front Axle Assembly	4	Carburetor Assembly Honda Model No. Gcv160a sta1	17
RWD Rear Axle and Transmission Assembly	5	Air Cleaner Assembly Honda Model No. Gcv160a sta1	18
Transmission Assembly 106-3956	6	Muffler Assembly Honda Model No. Gcv160a sta1	19
Engine and Blade Assembly	7	Flywheel Assembly Honda Model No. Gcv160a sta1	20
P2P Handle Assembly	8	Control Assembly Honda Model No. Gcv160a sta1	21
Rear Bag Assembly	9	Choke Base Assembly Honda Model No. Gcv160a sta1	22
Cylinder Barrel Assembly Honda Model No. Gcv160a sta1	10	Top Cover Assembly Honda Model No. Gcv160a sta1	23
Oil Pan Assembly Honda Model No. Gcv160a sta1	11	Label Assembly Honda Model No. Gcv160a sta1	24
Crankshaft Assembly Honda Model No. Gcv160a sta1	12		
Piston and Connecting Rod Assembly Honda Model No. Gcv160a sta1	13		
Camshaft Pulley Assembly Honda Model No. Gcv160a sta1	14		
Recoil Starter Assembly Honda Model No. Gcv160a sta1	15		

Part Description Abbreviations

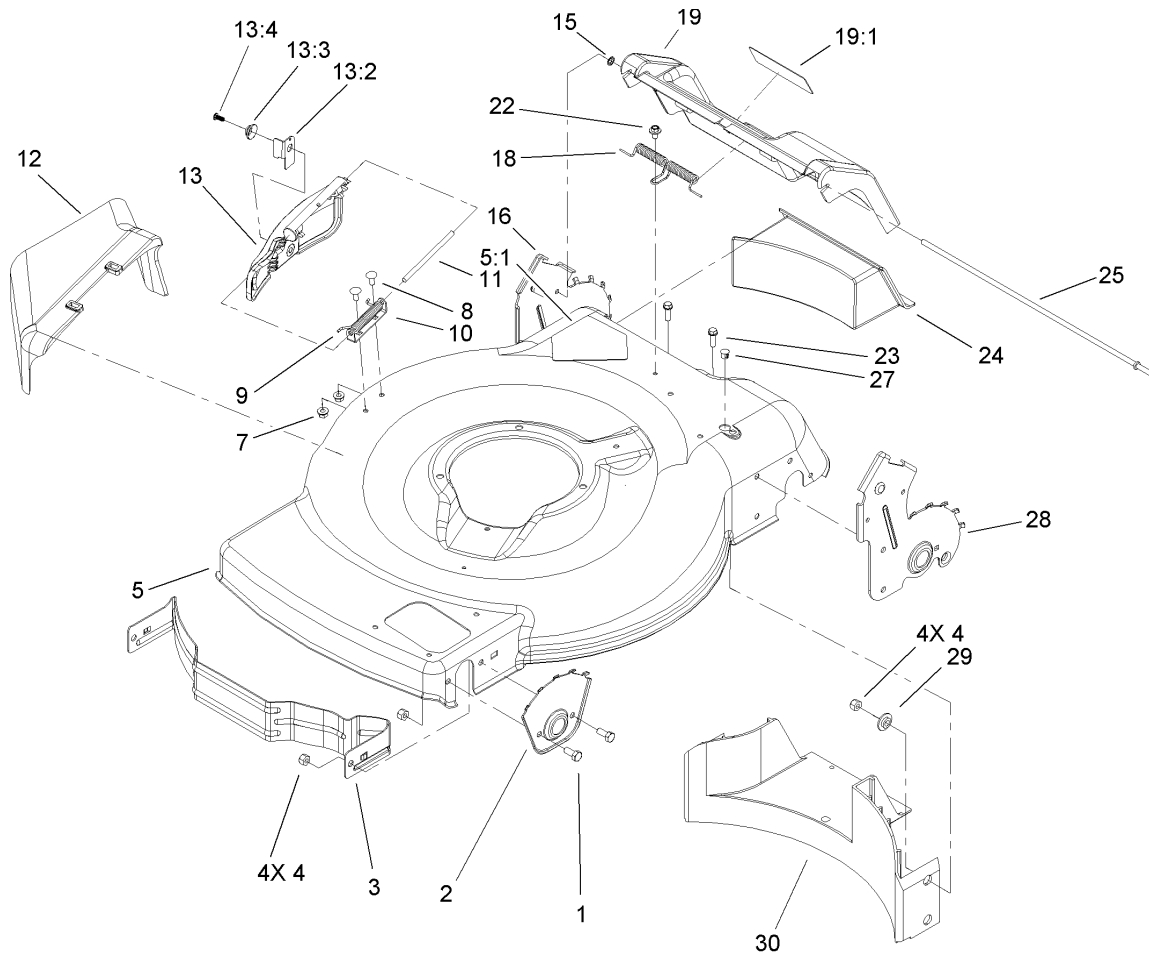
Part descriptions in this catalog may include the following abbreviations.

AR. as required	INC. incorporated
ASM. assembly	LH. left hand
CARR. carriage	NI. nylon insert
DEG. degrees	PPH. phillips pan head
FH. flat head	PTH. phillips truss head
GA. gauge	PTO. power take off
HF. hex flange	RH. right hand
HH. hex head	SFH. slotted fillister head
HHF. hex head flange	SHH. slotted hex head
HHFTF. hex head flange thread forming	SHWH. slotted hex washer head
HJ. hex jam	SPH. slotted pan head
HLH. hex lag head	SQH. square head
HOC. height-of-cut	SRH. slotted round head
HS. hex	STD. standard
HSBH. hex socket button head	TAP. self tapping
HSFH. hex socket flat head	TTH. torx truss head
HSH. hex socket head	WH. wing head
HWH. hex washer head	
HWHTF. hex washer head thread forming	
HYD. hydraulic	

Footnotes

❶ Not serviced separately

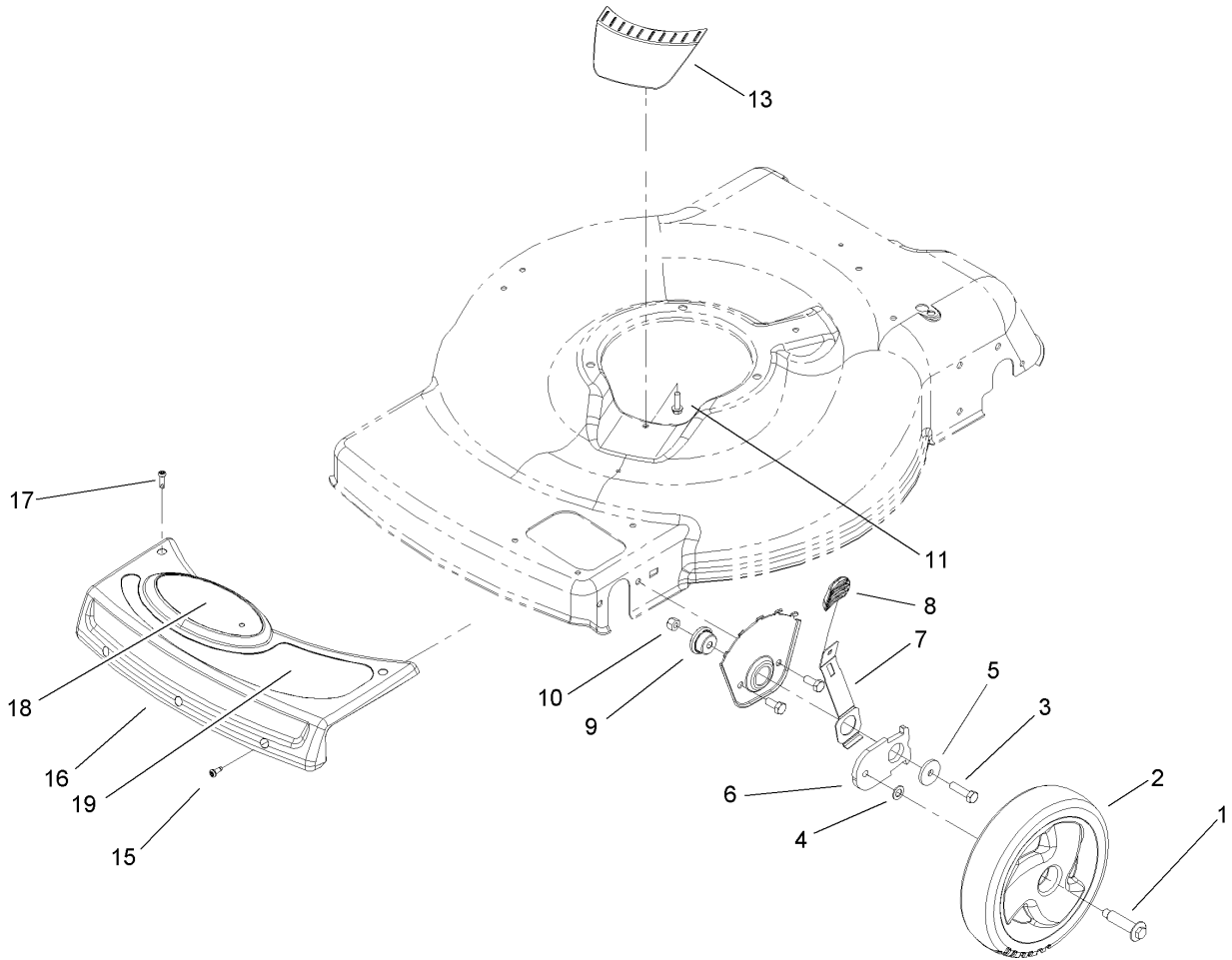
❷ Obtain parts from your local Honda dealer.



Deck, Side Chute, and Rear Door Assembly

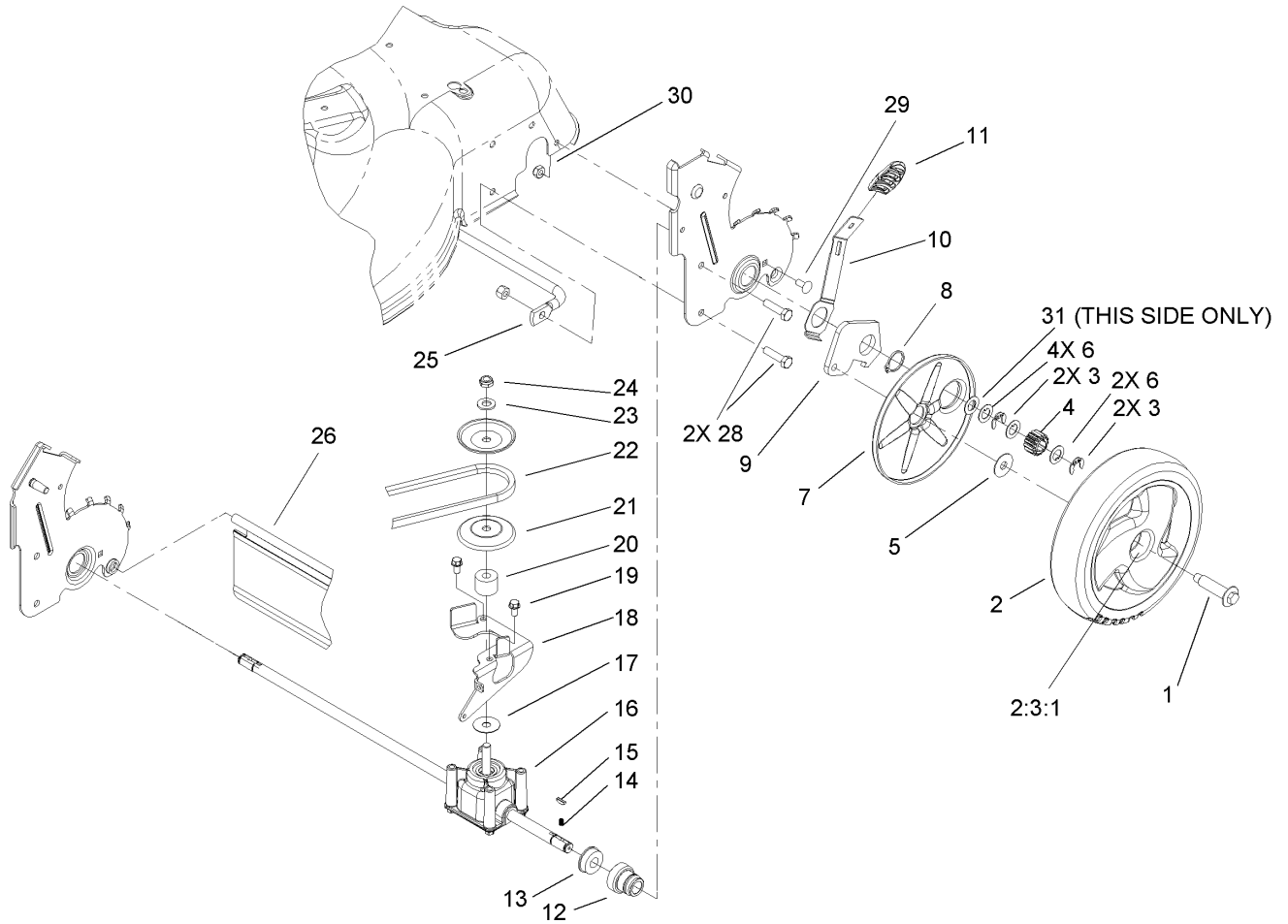
Ref	Part No.	Qty.	Description
1	322-3	4	Screw-HH
2	105-1808-03	2	Plate-Hoc, Front
3	104-8694-03	1	Baffle-Front
4	3296-29	8	Nut-Lock, NI
5	106-8343	1	Housing ASM
5:1	105-6838	1	Decal-Danger
7	32128-32	2	Nut-HHF
8	3229-11	2	Screw-CARR
9	99-5293	1	Spring-Torsion
10	99-5292	1	Bracket-Cover
11	99-5291	1	Rod-Cover
12	105-3028	1	Chute-Side Discharge
13	106-8394	1	Discharge Door ASM
13:2	107-0795	1	Latch-Door
13:3	107-7456	1	Cap-Door
13:4	107-7461	1	Screw-Plastite
15	32112-6	1	Pushnut
16	107-0790	1	RH Rear HOC Plate ASM
18	105-3032	1	Spring-Door, Rear
19	106-8389	1	Door ASM-Service
19:1	106-8388	1	Decal-Warning, Door
22	46-6810	1	Screw And Washer ASM
23	46-8091	2	Screw-HWH
24	105-1842	1	Plug-Discharge, Rear

Ref	Part No.	Qty.	Description
25	105-1827	1	Rod-Pivot, Rear Door
27	104-9369	1	Plug-Dome
28	107-0783	1	LH Rear HOC Plate ASM
29	105-3006	4	Washer-Stepped
30	105-1834	1	Baffle-Rear



RWD Front Axle Assembly

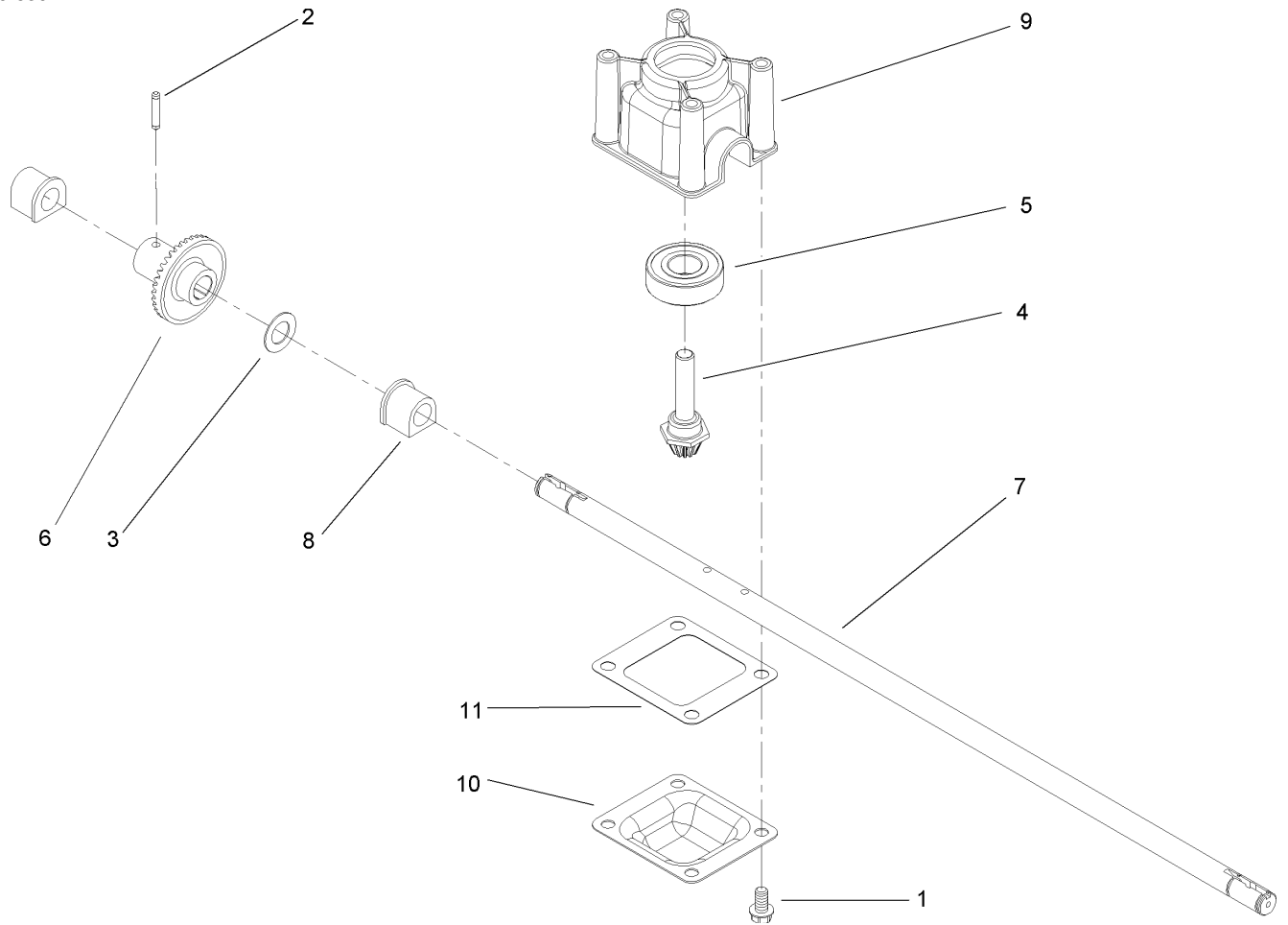
Ref	Part No.	Qty.	Description
1	614650	2	Bolt-Shoulder
2	107-1916	2	8in Wheel ASM
3	322-6	2	Screw-HH
4	40-1940	2	Washer
5	105-3048	2	Washer-Flat
6	105-1807	2	Arm-Pivot, Front
7	105-1809	2	Arm-Spring
8	107-1904	2	Knob-Lever, HOC
9	105-1818	2	Bushing-Mount, HOC
10	3296-29	2	Nut-Lock, NI
11	46-8091	1	Screw-HWH
13	105-3005	1	Cover-Belt Opening
15	105-6849	3	Screw-Thread Forming
16	107-1908	1	Bumper-Wpm
17	105-6828	2	Screw
18	107-3764	1	Decal-Housing
19	107-3763	1	Decal-Housing



RWD Rear Axle and Transmission Assembly

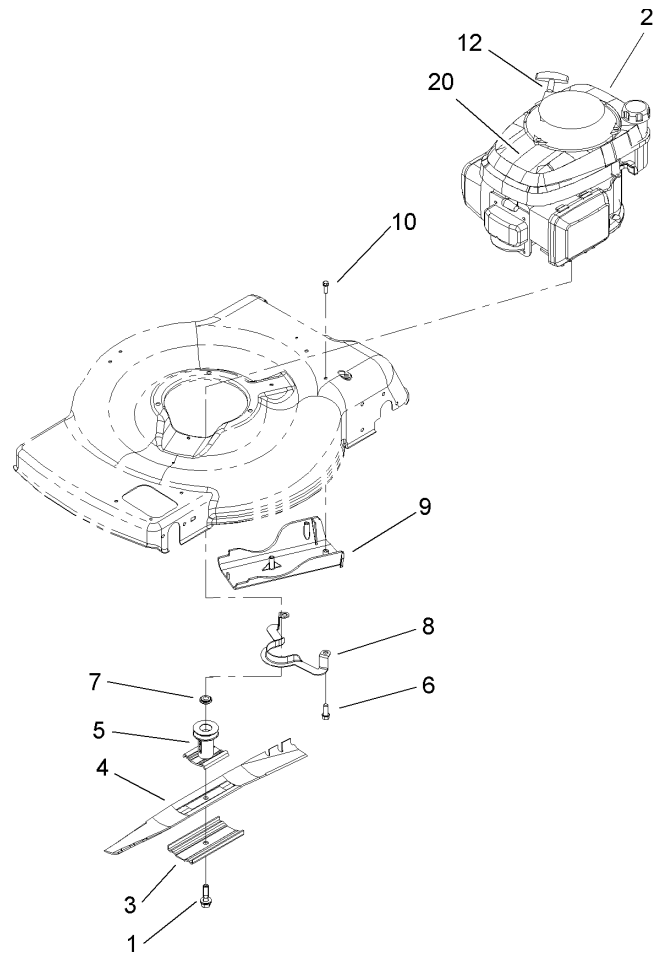
Ref	Part No.	Qty.	Description
1	614650	2	Bolt-Shoulder
2	107-1918	2	Wheel Gear Asm, 8-Inch
2:3:1	27-6250	2	Bushing
3	65-2720	4	Klipring-Locking
4	105-3040	2	Gear-Pinion, 15t
5	614426	2	Washer-Stepped
6	105-6840	6	Washer-Thrust
7	107-1919	2	Cover-Wheel
8	32151-36	2	Ring-Retaining
9	105-1819	2	Arm-Pivot, Rear
10	105-1809	2	Arm-Spring
11	107-1904	2	Knob-Lever, HOC
12	104-8698	2	Retainer-Bearing, HOC
13	104-8699	2	Bearing-Ball
14	39-9650	2	Spring-Compression
15	612066	2	Key
16	106-3956	1	Transmission ASM
17	105-6814	1	Washer-Shield
18	105-1832-03	1	Bracket-Pivot
19	32144-4	2	Screw-HWH
20	92-5791	1	Spacer
21	100-1176	2	Pulley-Half
22	91-2258	1	V-Belt
23	3256-24	1	Washer-Flat

Ref	Part No.	Qty.	Description
24	3296-5	1	Nut-Lock, NI
25	105-1811	1	Brace-HOC Plate
26	105-1843	1	Shield-Trailing
28	322-6	4	Screw-HH
29	3229-11	2	Screw-CARR
30	3296-16	2	Nut-Lock, NI
31	36-4780	1	Washer



Transmission Assembly 106-3956

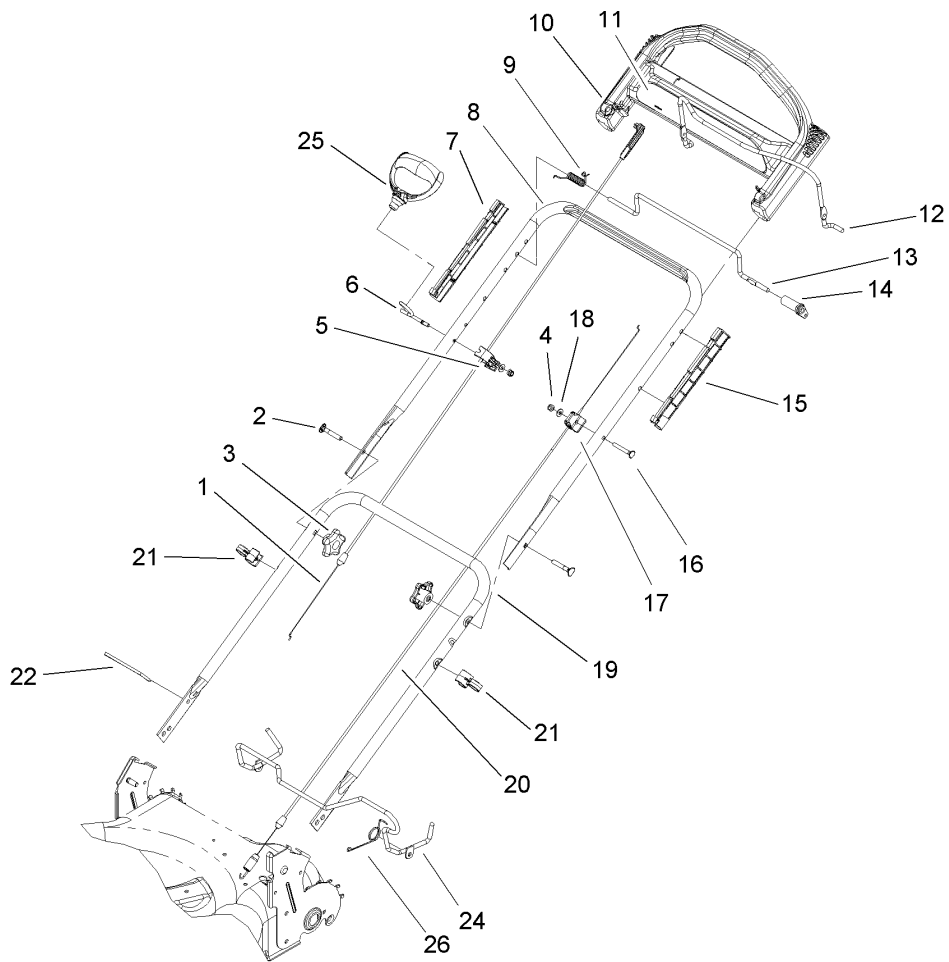
Ref	Part No.	Qty.	Description				
1	32144-4	4	Screw-HWH				
2	3285-19	1	Pin-Groove				
3	36-4780	1	Washer				
4	92-5790	1	Pinion				
5	100-1048	1	Bearing-Ball				
6	104-8671	1	Gear-Bevel, 37t				
7	106-3957	1	Shaft-Output				
8	104-8673	2	Bushing-Shaft, Output				
9	104-8674	1	Gearcase-Upper				
10	104-8675-03	1	Cover-Gearcase				
11	105-6839	1	Gasket-Gearcase				



Engine and Blade Assembly

Ref	Part No.	Qty.	Description
1	105-8579	1	Bolt-Blade
2		1	Engine-Honda Model No. Gcv 160 Sta1
3	105-3029-03	1	Support-Blade
4	104-8697-03	1	Blade-22 Inch
5	106-3987	1	Blade Driver ASM
6	95-1726	3	Screw-Taptite
7	106-3999	1	Spacer-Driver
8	105-3030-03	1	Guide-Belt
9	105-1835	1	Cover-Belt, Rear
10	46-8091	3	Screw-HWH
12	92-1701	1	Stop-Rope
20	107-3760	1	Decal-Recoil

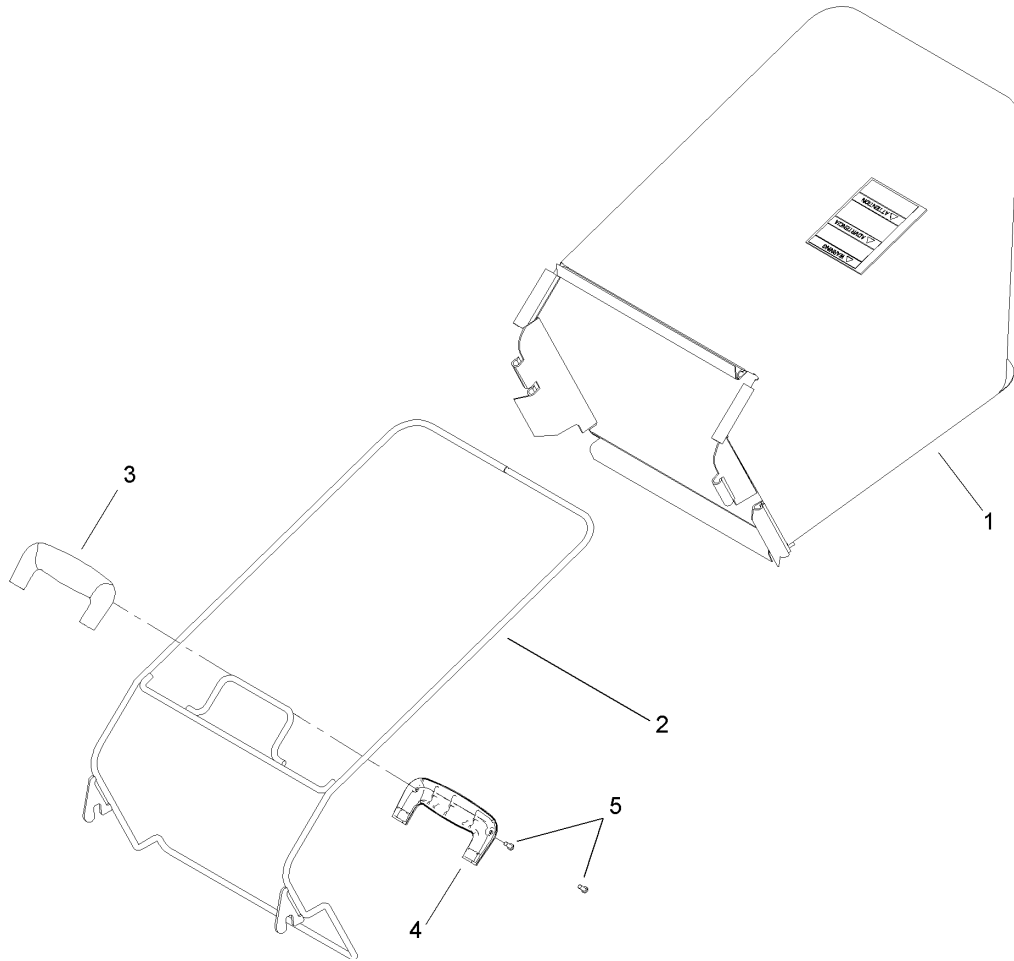
--	--	--	--



P2P Handle Assembly

Ref	Part No.	Qty.	Description
1	107-1902	1	Cable-Brake
2	92-2260	2	Screw-Handle
3	106-4161	2	Knob-Handle
4	3296-73	2	Nut-Lock, NI
5	106-8331	1	Anchor-Cable
6	107-1935	1	Guide-Rope
7	105-6841	2	Guide-RH
8	104-8680-05	1	Handle-Upper
9	104-8690	1	Spring-Torsion
10	106-8337	1	Handle-Control, Gray
11	106-8390	1	Decal-Handle
12	104-8679-03	1	Bail-Brake
13	99-1588	1	Bar-Control, Traction
14	99-1589	1	Lever-Traction
15	105-6842	2	Guide-LH
16	95-4453	1	Screw
17	92-7729	1	Anchor-Cable, Upper
18	3256-1	2	Washer-Flat
19	107-0784-05	1	Handle-Lower
20	105-1844	1	Cable-Traction
21	106-6805	2	Guide-Cable
22	614249	1	Strap-Tie
24	107-0768	1	Release Lever ASM
25	106-8345	1	Handle-Recoil

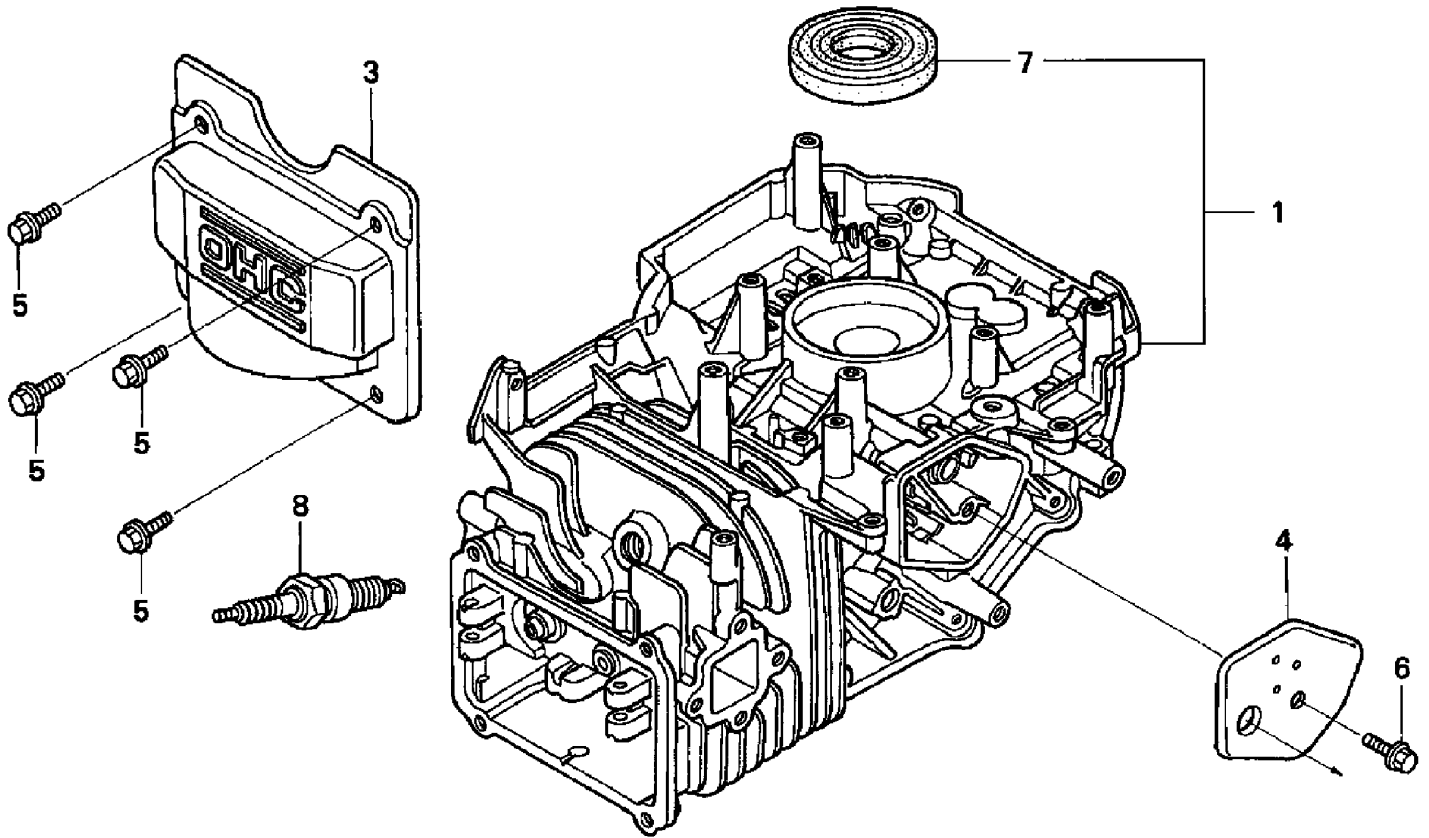
Ref	Part No.	Qty.	Description
26	107-7472	1	Spring-Torsion



Rear Bag Assembly

Ref	Part No.	Qty.	Description
1	106-8392	1	Grass Bag ASM
2	105-6831-03	1	Brace Bag Frame ASM
3	107-1905	1	Handle-Bag, Top
4	107-1906	1	Handle-Bag, Bottom
5	32144-111	2	Screw-PPH

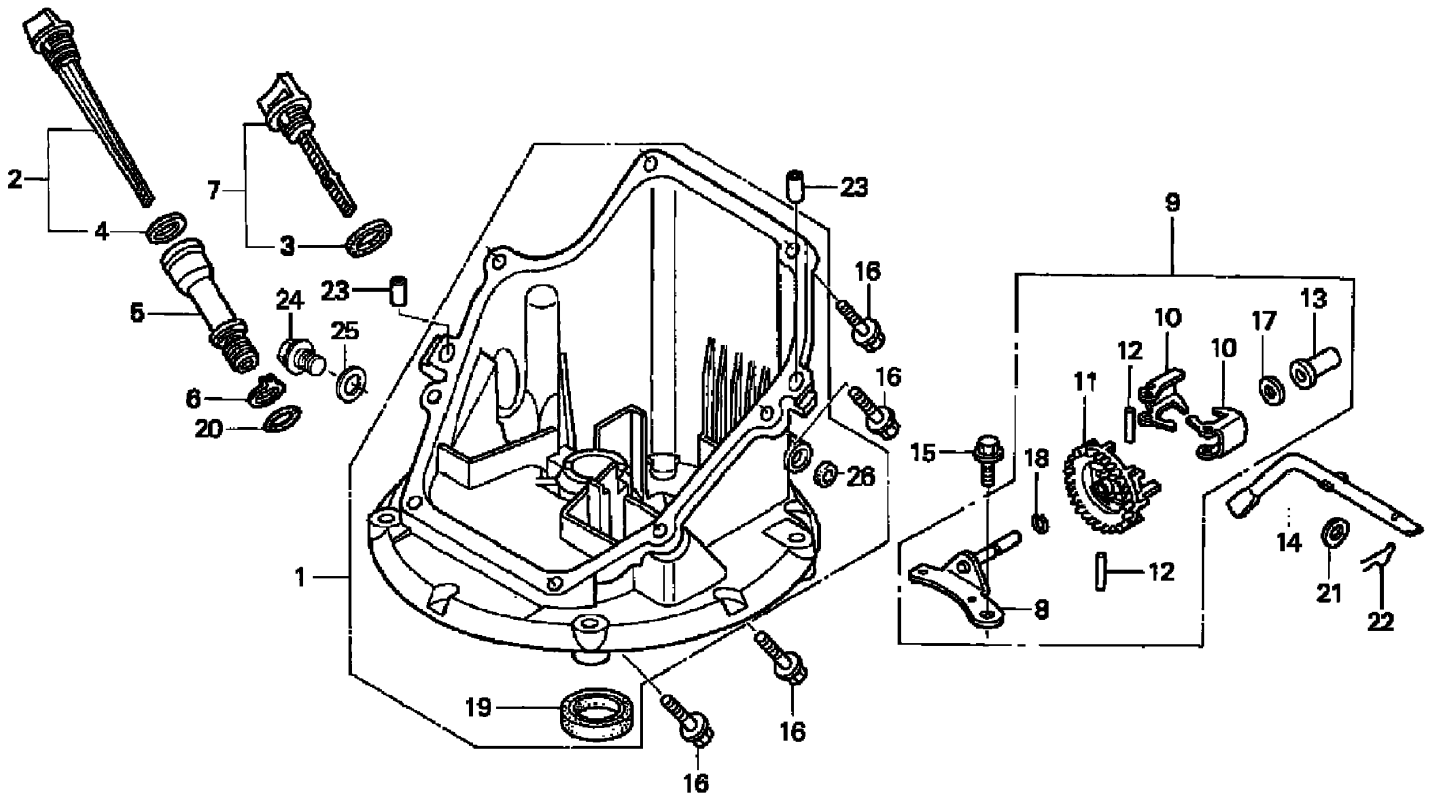
--	--	--	--



PARTS SHOWN IN ILLUSTRATION BUT NOT CALLED OUT IN PARTS LIST, MAY NOT APPLY TO THIS MODEL.

Cylinder Barrel Assembly Honda Model No. Gcv160a sta1

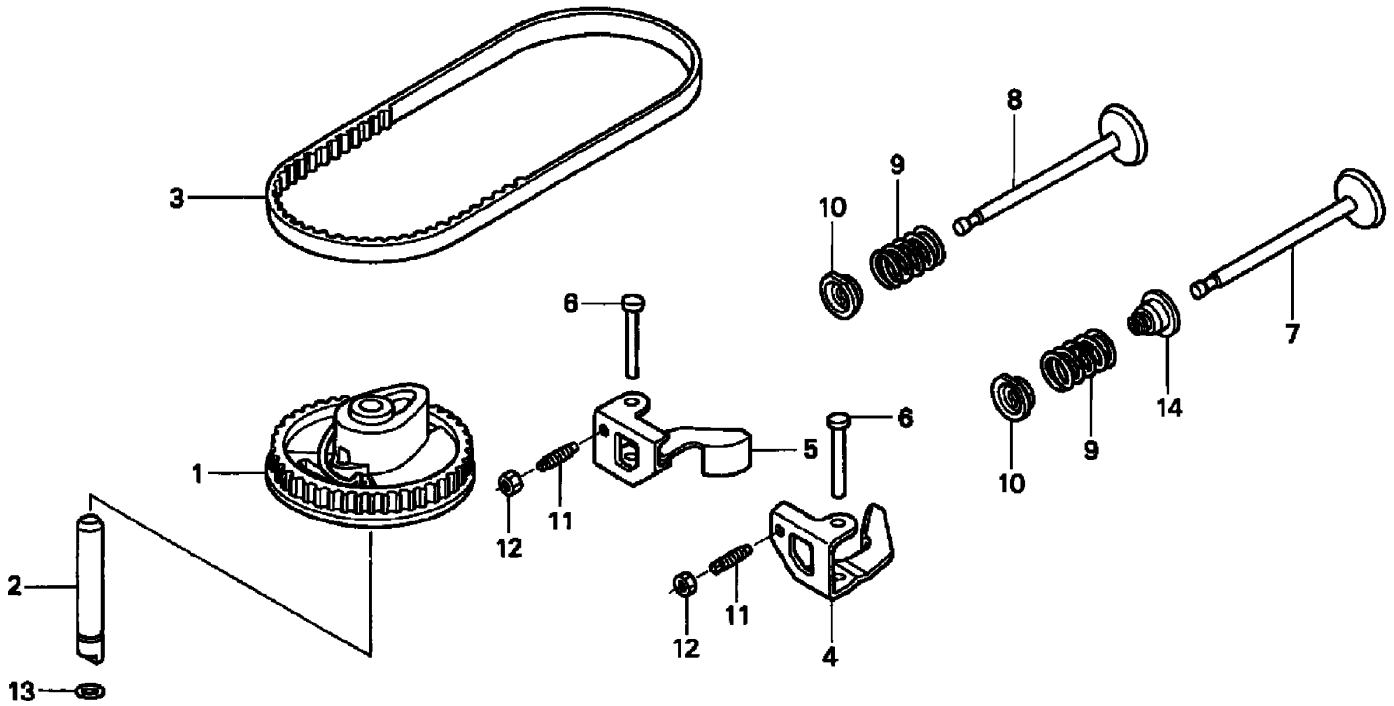
Ref	Part No.	Qty.	Description				
2	12000-ZL8-415	1	Cylinder ASM (.010)				
3	12311-ZL8-000	1	Cover, Head				
4	12355-ZL8-000	1	Cover, Breather (Breather Valve Asm.)				
5	90013-883-000	4	Bolt-Flange (6x12) (Ct200)				
6	90014-952-000	1	Bolt, Flange (6x14)				
7	91201-ZL8-003	1	Oil Seal (25.4x62x6)				
8	98079-56846	1	Spark Plug (Bpr6es) (Ngk)				



PARTS SHOWN IN ILLUSTRATION BUT NOT CALLED OUT IN PARTS LIST, MAY NOT APPLY TO THIS MODEL

Oil Pan Assembly Honda Model No. Gcv160a sta1

Ref	Part No.	Qty.	Description	Ref	Part No.	Qty.	Description
①	11300-ZM0-811	1	Pan Asm., Oil	⑩	16511-ZL8-000	2	Weight, Governor
②	15650-ZM0-801	1	Dipstick-Oil	⑪	16512-ZM0-000	1	Holder, Governor Weight
④	15625-ZE6-000	1	Gasket, Oil Filler Cap	⑫	16513-ZE1-000	2	Pin, Governor Weight
⑤	15631-ZM0-000	1	Extension-Oil Filler	⑬	16531-ZE1-000	1	Slider, Governor
⑥	15639-ZM0-000	1	Washer, Extension Lock	⑭	16541-ZM0-000	1	Shaft, Governor Arm
⑧	16508-ZM0-010	1	Shaft, Governor Holder	⑮	90014-952-000	1	Bolt, Flange (6x14)
⑨	16510-ZM0-010	1	Governor Asm.	⑯	90121-952-000	8	Bolt, Flange (6x25)
⑩	16511-ZL8-000	2	Weight, Governor	⑰	90451-ZE1-000	1	Washer, Thrust (6mm)
⑪	16512-ZM0-000	1	Holder, Governor Weight	⑱	90602-ZE1-000	1	Clip-Governor Holder
⑫	16513-ZE1-000	2	Pin, Governor Weight	⑲	91202-ZL8-003	1	Oil Seal (28x41.25x6)
⑬	16531-ZE1-000	1	Slider, Governor	⑳	91356-MA6-005	1	O-Ring
⑭	16541-ZM0-000	1	Shaft, Governor Arm	㉑	94101-06800	1	Washer
⑮	90014-952-000	1	Bolt, Flange (6x14)	㉒	94251-08000	1	Pin, Lock (8mm)
				㉓	94301-08200	2	Pin, Dowel (8x20)

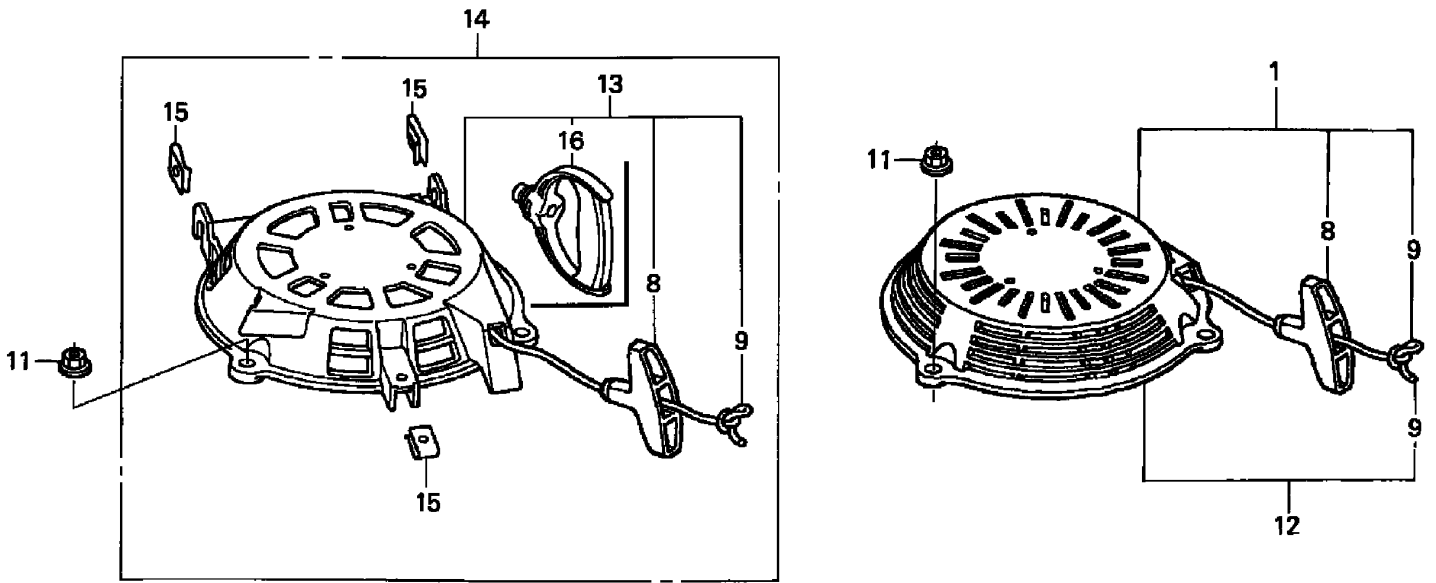


PARTS SHOWN IN ILLUSTRATION BUT NOT CALLED OUT IN PARTS LIST, MAY NOT APPLY TO THIS MODEL.

Camshaft Pulley Assembly Honda Model No. Gcv160a sta1

Ref	Part No.	Qty.	Description
1	14320-ZL8-010	1	Pulley, Camshaft
2	14324-ZL8-000	1	Shaft, Cam Pulley
3	14400-Z0J-014	1	Belt, Timing (84hu7 G-
4	14431-Z0J-000	1	Arm-In. Valve Rocker
5	14441-Z0J-000	1	Arm, Ex. Valve Rocker
6	14461-ZL8-000	2	Shaft, Rocker Arm
7	14711-ZL8-000	1	Valve, In.
8	14721-ZL8-000	1	Valve, Ex.
9	14751-ZL8-000	2	Spring, Valve
10	14771-Z0J-000	2	Retainer-Valve Spring
11	90012-333-000	2	Screw, Tappet Adj.
12	90206-001-000	2	Nut, Tappet Adj.
13	91301-ZM0-V31	1	O-Ring (6.8x1.9)

Ref	Part No.	Qty.	Description
14	12209-ZM0-003	1	Seal, Valve Stem

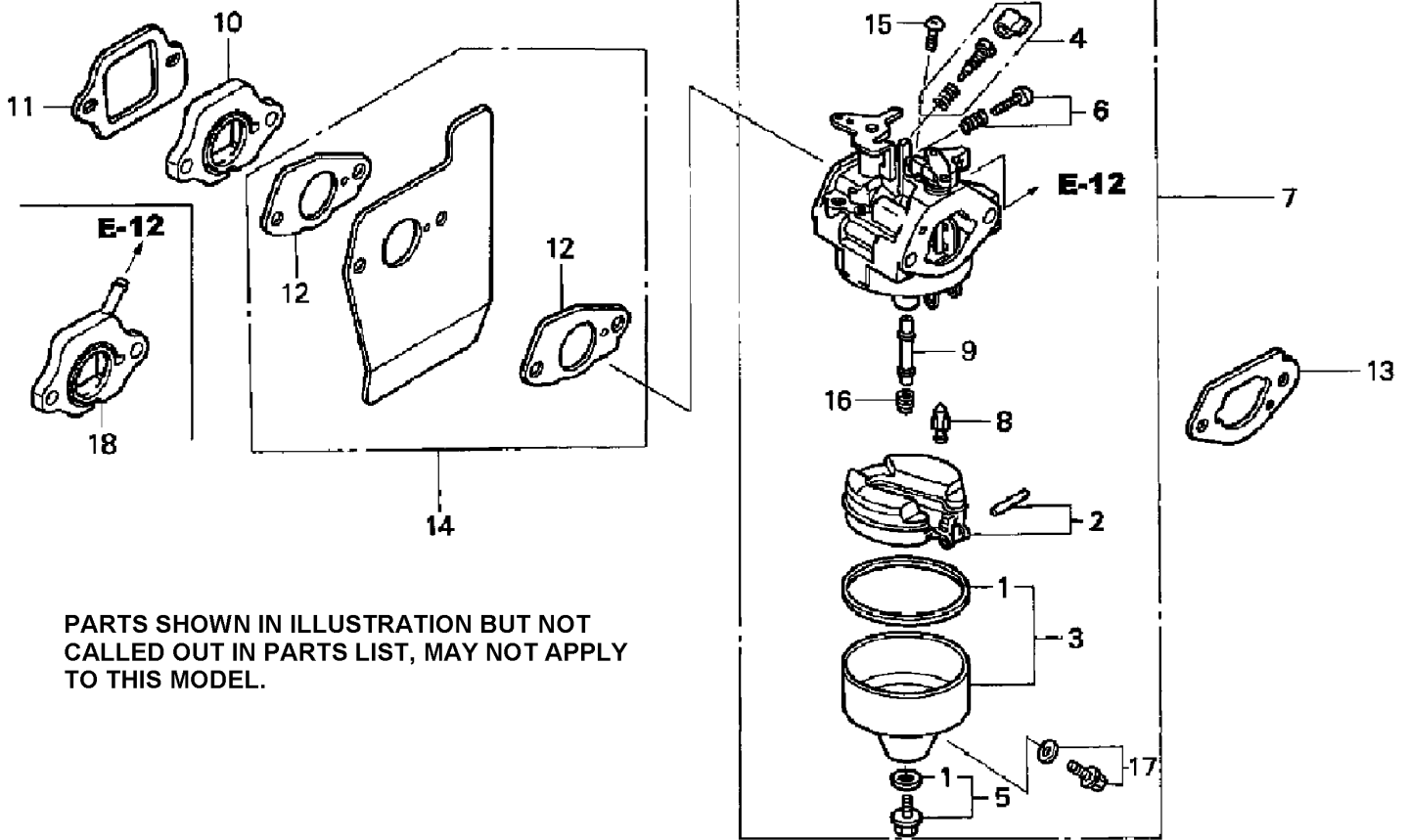


PARTS SHOWN IN ILLUSTRATION BUT NOT CALLED OUT IN PARTS LIST, MAY NOT APPLY TO THIS MODEL.

Recoil Starter Assembly Honda Model No. Gcv160a sta1

Ref	Part No.	Qty.	Description
9	28462-Z0L-V71	1	Rope, Recoil Starter
11	90201-ZM0-000	3	Nut, Flange (6mm)
13	28400-Z0L-V70	1	Starter Asm., Recoil
15	66871-KY2-700	3	Nut, Cowl (Upper)
16	28461-Z0L-V71	1	Knob, Recoil Starter

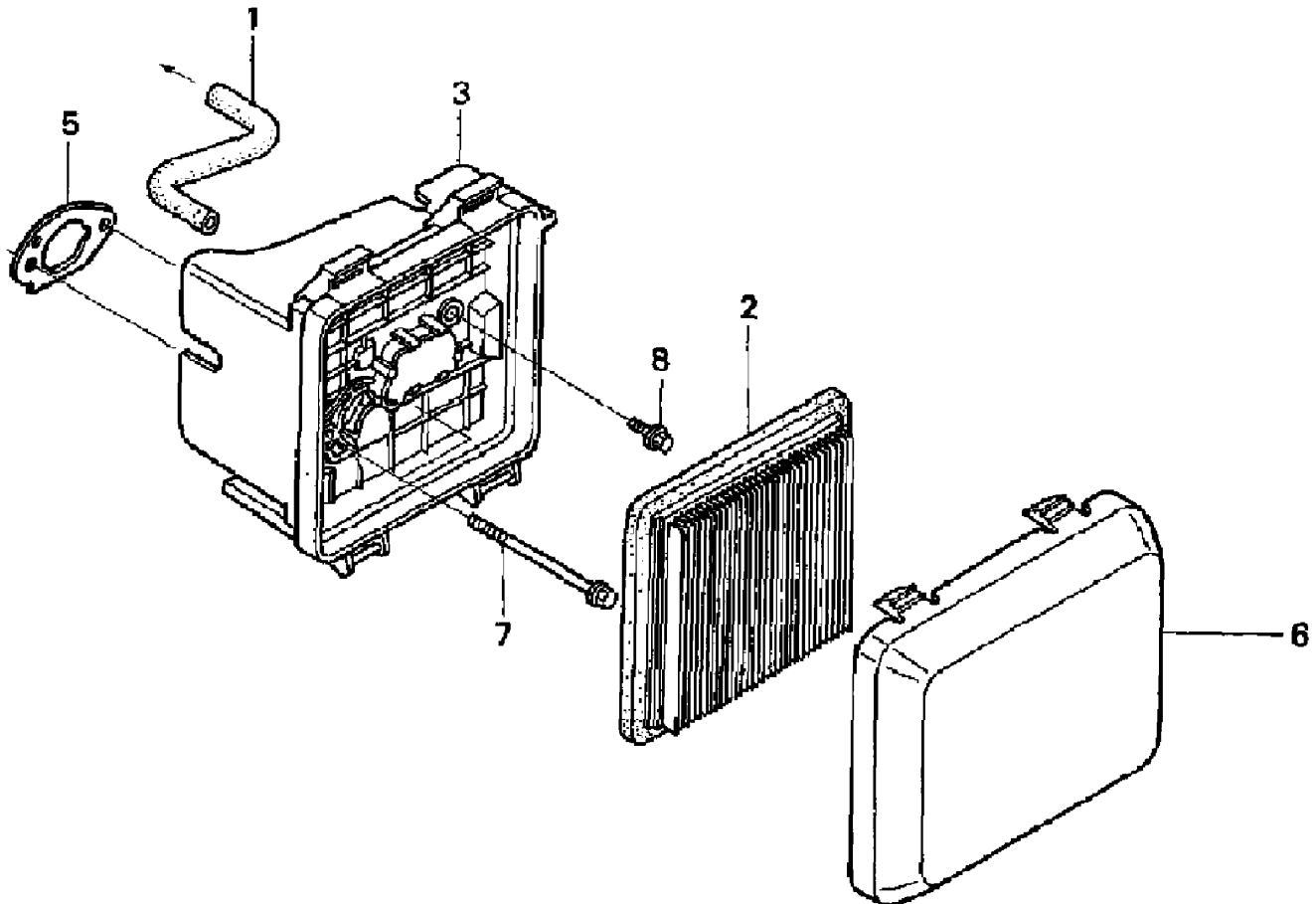
--	--	--	--



Carburetor Assembly Honda Model No. Gcv160a sta1

Ref	Part No.	Qty.	Description
①	16010-883-015	1	Gasket Set
②	16013-ZL1-003	1	Float Set
③	16015-887-782	1	Chamber Set, Float
⑤	16028-ZE0-005	1	Screw Set B
⑦	16100-Z0L-801	1	Carburetor Asm. (Bb62g A)
⑧	16155-ZM0-003	1	Valve, Float
⑨	16166-ZM0-003	1	Nozzle, Main
⑩	16211-ZL8-000	1	Insulator, Carburetor
⑪	16212-ZL8-000	1	Gasket, Insulator
⑫	16221-883-800	2	Gasket, Carburetor
⑬	16228-ZL8-000	1	Gasket, Carburetor (Choke Side)
⑭	19650-ZM0-000	1	Guide, Air
⑮	93550-05006-0H	1	Screw-Pan

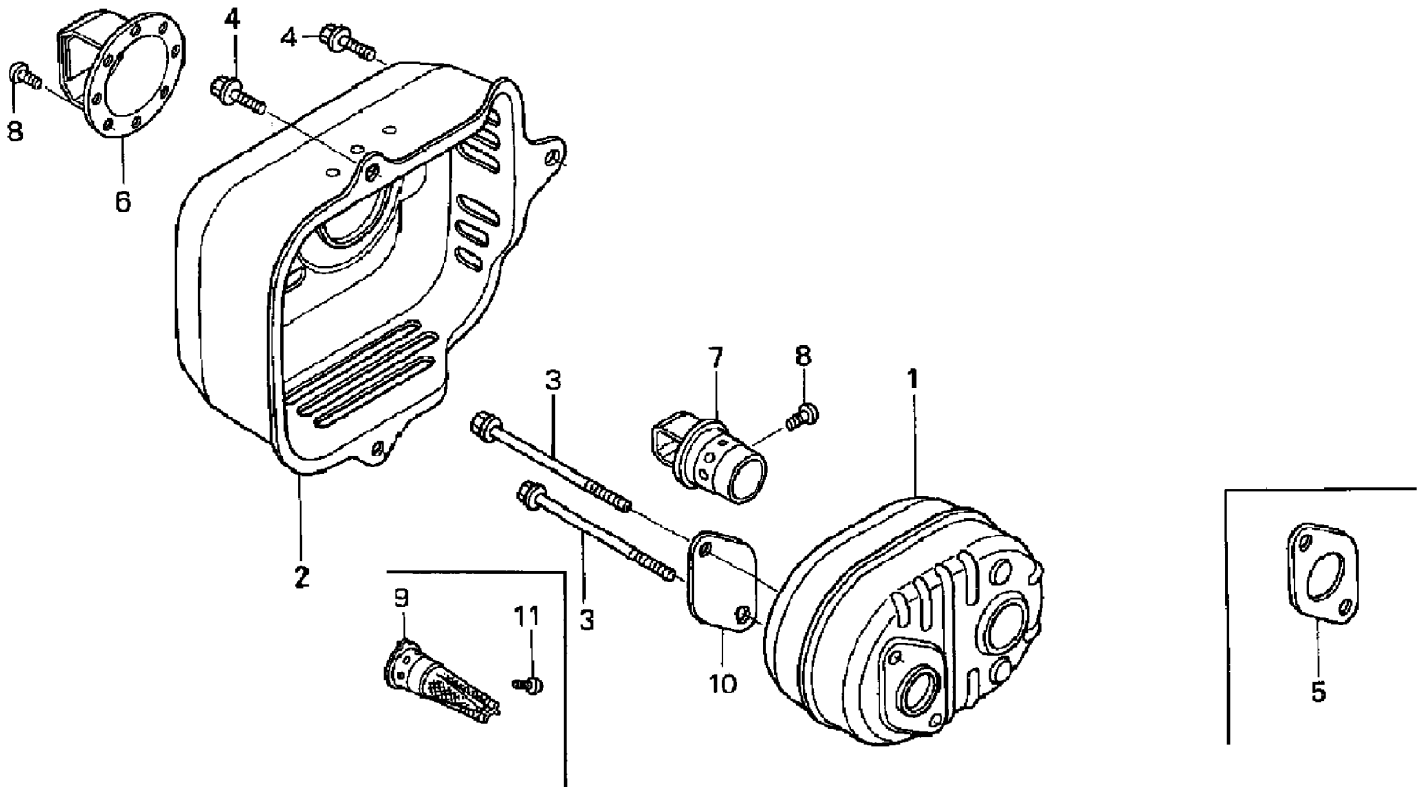
Ref	Part No.	Qty.	Description
⑯	99101-124-0600	1	Jet, Main (#60)
⑰	99101-124-0620	1	Jet, Main (#62)
⑱	99101-124-0650	1	Jet, Main (#65)
⑳	16024-ZE1-811	1	Screw Set-Drain



PARTS SHOWN IN ILLUSTRATION BUT NOT CALLED OUT IN PARTS LIST, MAY NOT APPLY TO THIS MODEL.

Air Cleaner Assembly Honda Model No. Gcv160a sta1

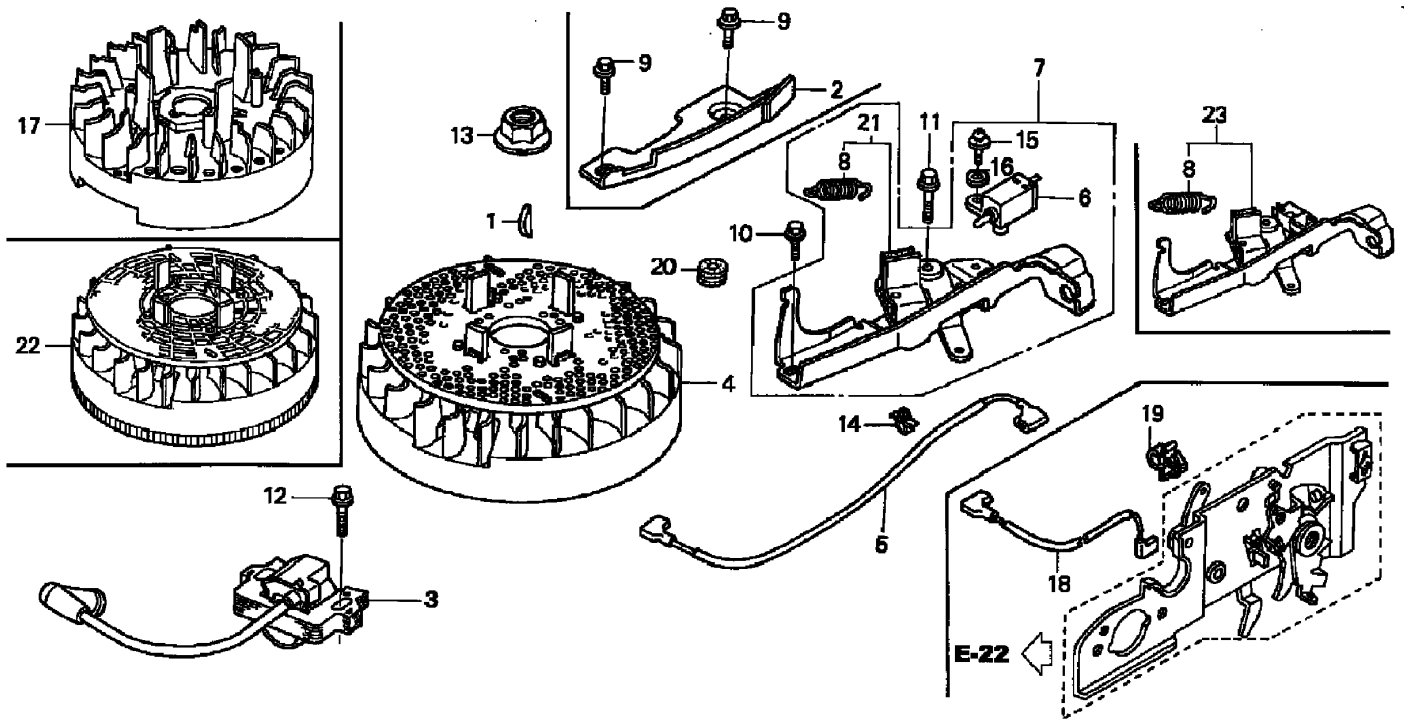
Ref	Part No.	Qty.	Description				
1	15721-ZM0-000	1	Tube, Breather				
2	17211-ZL8-003	1	Element-Air Cleaner				
3	17220-ZM0-000	1	Case Asm., Air Cleaner				
5	17228-ZM0-000	1	Gasket, Air Cleaner				
6	17231-Z0L-020	1	Cover, Air Cleaner				
9	90003-ZM0-000	2	Bolt, Flange (6x86) (Ct200)				
8	95701-06014	1	Bolt-Flange				



PARTS SHOWN IN ILLUSTRATION BUT NOT CALLED OUT IN PARTS LIST, MAY NOT APPLY TO THIS MODEL.

Muffler Assembly Honda Model No. Gcv160a sta1

Ref	Part No.	Qty.	Description				
1	18310-ZM0-000	1	Muffler				
2	18321-Z0L-J00	1	Protector, Muffler (Cbu)				
3	90004-ZL8-000	2	Bolt, Flange (6x79) (Ct200)				
4	90013-883-000	3	Bolt-Flange (6x12) (Ct200)				
5	18381-ZL8-305	1	Gasket, Muffler				
9	A8350-ZL8-000	1	Arrester-Spark				
10	18356-ZL8-000	1	Plate, Arrester Number				
11	90055-ZE1-000	1	Screw-Tapping (4x6)				

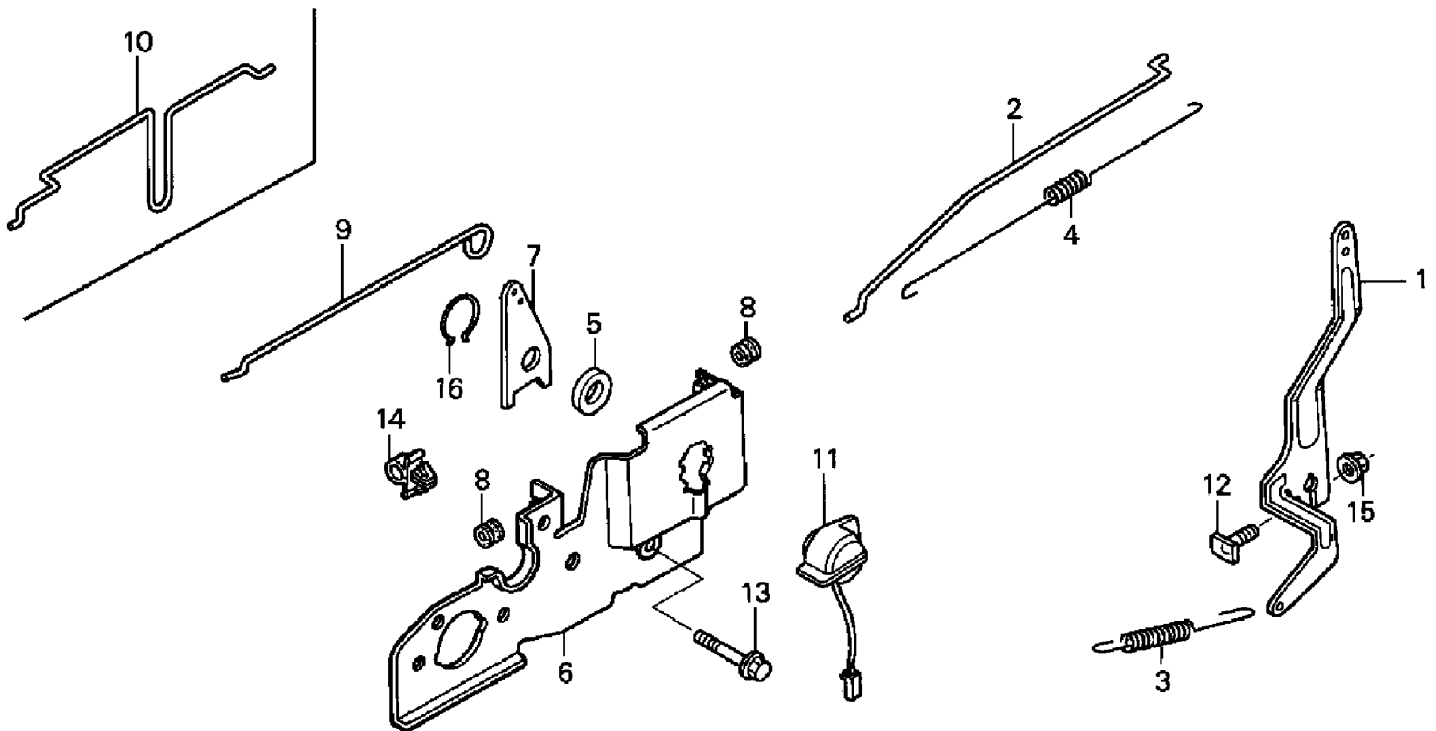


PARTS SHOWN IN ILLUSTRATION BUT NOT CALLED OUT IN PARTS LIST, MAY NOT APPLY TO THIS MODEL.

Flywheel Assembly Honda Model No. Gcv160a sta1

Ref	Part No.	Qty.	Description
①	13331-357-000	1	Key, Special Woodruff (25x18)
③	30500-Z0J-003	1	Coil Asm., Ignition
④	31105-Z0L-010	1	Flywheel ASM
⑤	32195-ZM0-800	1	Wire-Stop Switch
⑥	35120-ZM0-003	1	Engine Stop Switch ASM
⑧	75113-ZM0-000	1	Spring, Brake Lever
⑩	90014-952-000	1	Bolt, Flange (6x14)
⑪	90018-ZE1-000	1	Bolt-Flange
⑫	90022-888-010	1	Bolt, Flange (6x20) (Ct200)
⑬	90201-878-003	1	Nut, Special (14mm)
⑭	90681-959-003	1	Clip, Cable (A)
⑮	93892-04012-00	1	Screw-Washer
⑯	94103-04000	1	Washer-Plain
⑳	11344-MB0-000	1	Grommet A-Rr Cover

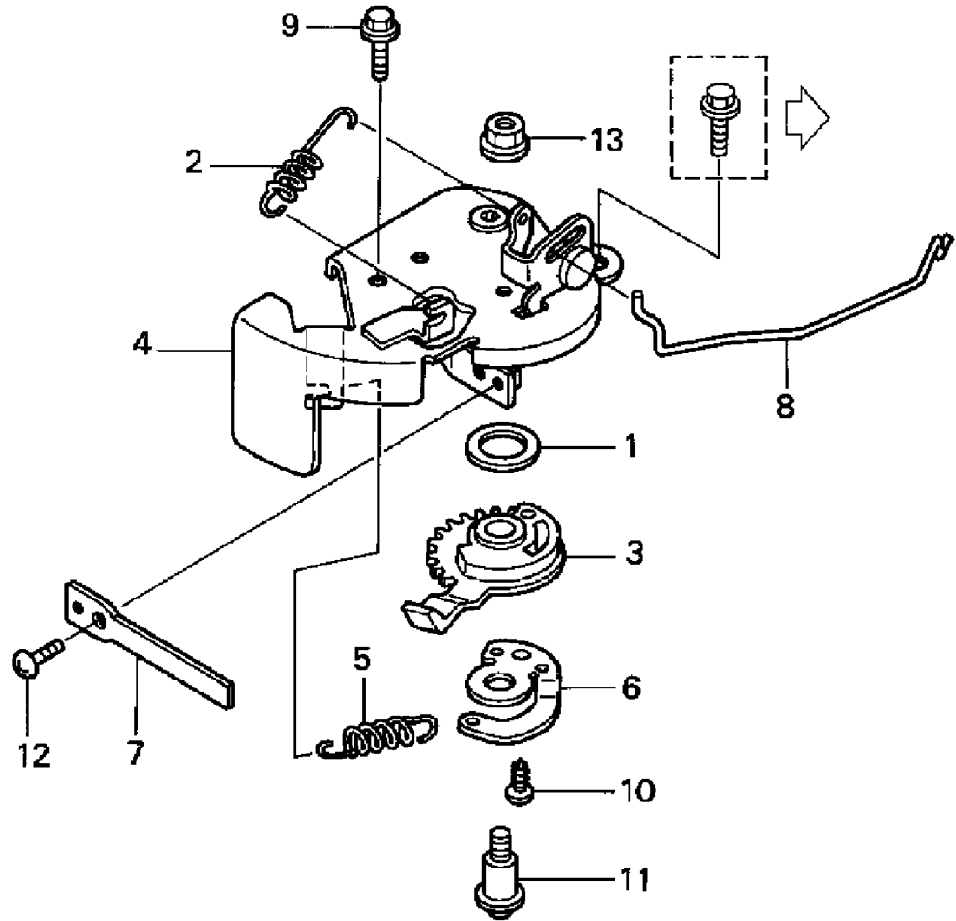
Ref	Part No.	Qty.	Description
⑳	75110-Z0L-800	1	Brake Sub ASM



PARTS SHOWN IN ILLUSTRATION BUT NOT CALLED OUT IN PARTS LIST, MAY NOT APPLY TO THIS MODEL.

Control Assembly Honda Model No. Gcv160a sta1

Ref	Part No.	Qty.	Description				
①	16551-ZM0-010	1	Arm, Governor				
②	16555-Z0L-800	1	Rod, Governor				
③	16561-Z0L-000	1	Spring, Governor				
④	16562-ZM0-000	1	Spring, Throttle Return				
⑥	16580-Z0L-810	1	Base, Control				
⑫	90015-ZE5-010	1	Bolt-Governor Arm				
⑬	90016-ZE8-000	1	Bolt, Flange (6x45)				
⑮	94050-06000	1	Nut-Flange (6mm)				



PARTS SHOWN IN ILLUSTRATION BUT NOT CALLED OUT IN PARTS LIST, MAY NOT APPLY TO THIS MODEL.

Choke Base Assembly Honda Model No. Gcv160a sta1

Ref	Part No.	Qty.	Description
1	16251-Z0L-800	1	Seal, Choke Lever
2	16592-ZJ1-000	1	Spring, Cable Return
3	16612-Z0L-800	1	Lever, Choke
4	16613-Z0L-800	1	Base, Choke
5	16614-Z0L-800	1	Spring, Choke Lever
6	16616-Z0L-800	1	Hook, Choke Spring
7	16619-Z0L-800	1	Plate, Choke
8	16632-Z0L-800	1	Rod, Stop
9	90029-888-000	1	Bolt, Flange (6x16)
10	90102-SP1-003	1	Screw, Tapping (4x8) (Po)
11	90141-KT8-000	1	Screw, Pan (5x19)
12	93500-04008-0H	1	Screw, Pan (4x8)
13	94050-05000	1	Nut, Flange (5mm)

NOTES

NOTES

NOTES

LAWN-BOY®