



Weeder/Cultivator Sand Pro®

Model No. 08815—Serial No. 40001 and Up

Form No. 3316-481 Rev A

Installation Instructions

Note: To install this weeder/cultivator onto your Sand Pro, you must purchase a rake mounting kit (Model No. 08814) separately from an Authorized Toro Distributor. The installation instructions for the kit are included in this sheet.

Loose Parts

Note: Use the chart below to identify parts used for installation.

Description	Qty.	Use
Lift arm assembly	1	Installing the mounting kit (parts are supplied with the rake mounting kit)
Lift pivot	1	
Clevis pin	1	
Flat washers	2	
Cotter pin	1	
Clevis pin	1	
Flat washers	2	
Cotter pin	1	
Angle and sweep assembly	1	Installing the weeder/cultivator
Cap screw	1	
Flat washers	4	
Locknut	4	
Lift arm adjusters	2	
Shoulder bolts	2	
Spacers	2	
Locknuts	2	
Flat washers	2	
Blocks	2	
Lock pins	2	
Scarifier bar	1	
Spacers	5	
Carriage bolts	10	

Note: If a rake attachment and the mounting kit are already installed on the machine, disconnect the rake from the kit and refer to Installing the Weeder/Cultivator on page 2.

Installing the Mounting Kit

1. Remove any attachment from the rear of the machine.

Note: Keep the hydraulic cylinder retaining pin and all the hardware.

2. Remove the existing 4 cap screws, lock washers, and flat washers from the back of the left and right wheel motor mounts (Fig. 1).

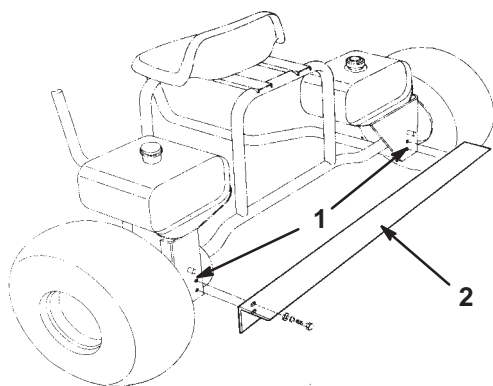


Figure 1

1. Wheel motor mounts
2. Existing attachment
3. Mount the lift arm assembly to the left and right wheel motor mounts with the fasteners that you previously removed (Fig. 2).

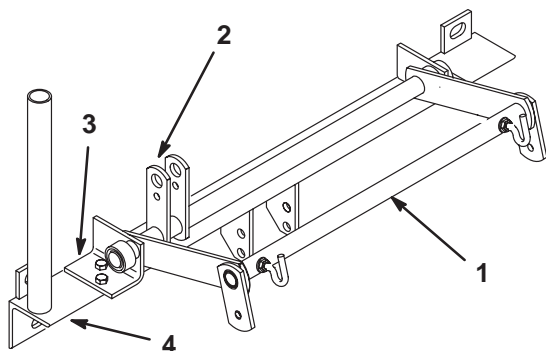


Figure 2

1. Lift arm assembly
2. Connect the hydraulic cylinder here
3. Lift arm bracket
4. Lift arm angle
4. Connect the hydraulic cylinder from the machine to the cylinder bracket on the hitch and lift arm assembly with the large retaining pin, hair pin, and cotter pin that you previously removed.

Note: Use the lift pivot, clevis pins, and fasteners supplied in the rake mounting kit for mounting the rake attachments.

Installing the Weeder/Cultivator

1. Remove the 4 cap screws and locknuts that secure the lift arm brackets to the lift arm angle (Fig. 2).
2. Secure the lift arm brackets to the top of the lift arm angle and the angle and sweep assembly to the underside of the lift arm angle with 4 new cap screws, washers, and locknuts as shown in Figure 3.

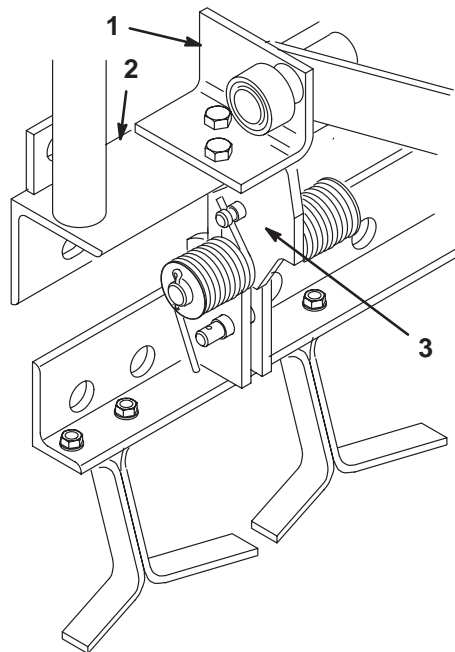


Figure 3

1. Lift arm assembly
2. Lift arm angle
3. Angle and sweep assembly

3. Mount the rod ends of the lift arm adjuster assemblies to the mounting pins on the angle and sweep assemblies with washers and cotter pins (Fig. 4).

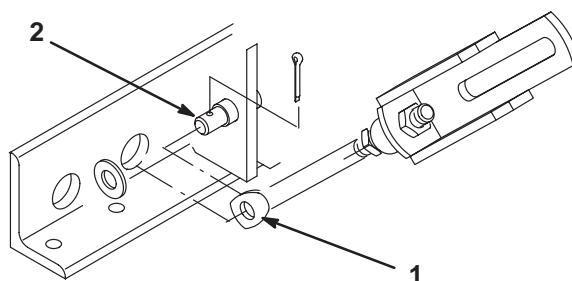


Figure 4

1. Rod end
2. Mounting pin

4. Mount the opposite ends of the lift arm adjuster assemblies to the lift arms with 2 shoulder bolts, spacers, and locknuts (Fig. 5).

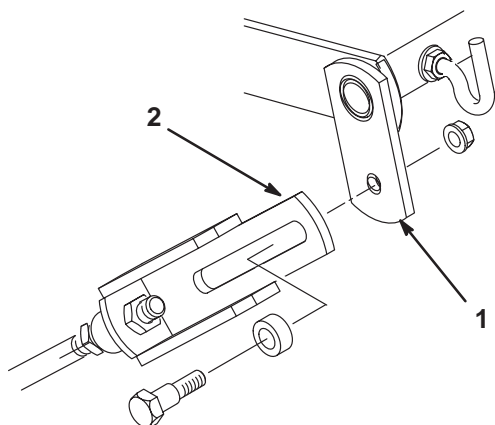


Figure 5

1. Lift arm
2. Lift arm adjuster

5. Select a set of holes in the lift arm adjuster for the desired depth setting or lockout position (when the weeder is not to be used).

Note: Refer to the inset in Figure 6 for settings.

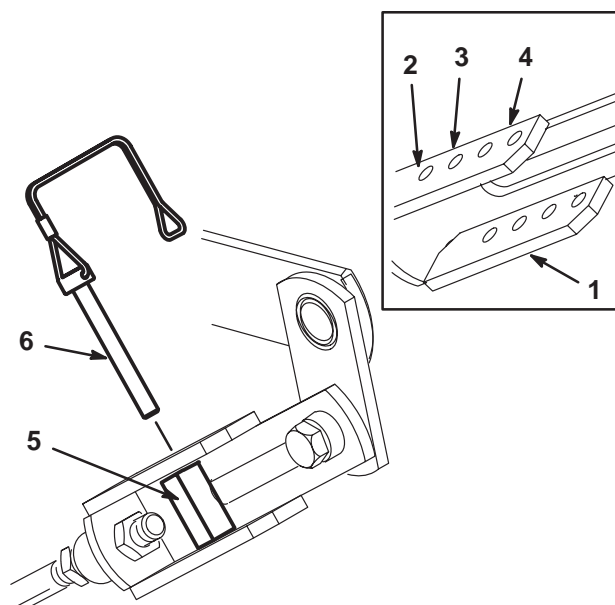


Figure 6

1. Adjuster arm
2. Locked-out position
3. Minimum depth
4. Maximum depth
5. Block
6. Locking pin

6. Install the block into the lift arm adjuster, align the mounting holes, and secure the block to the lift arm adjuster with the lock pin (Fig. 6).

7. You can mount the scarifier bar to the angle assembly in place of the sweeps to break up the hard ground or to provide a less aggressive cultivation tool for a sand trap (Fig. 7).

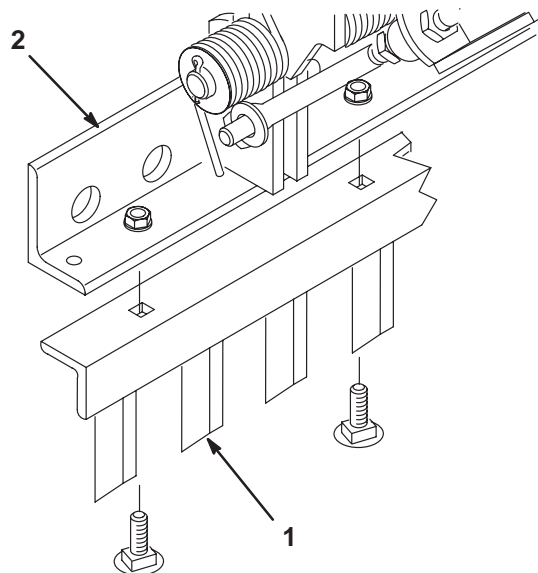


Figure 7

1. Scarifier bar
2. Angle assembly

8. For additional ground penetration, remove the sweeps from the angle assembly and install them with spacers and longer carriage bolts supplied in the kit (Fig. 8).

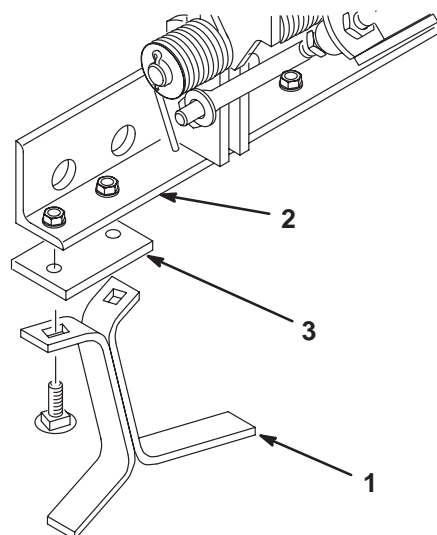


Figure 8

1. Sweep
2. Angle assembly
3. Spacer

Operating the Weeder/Cultivator

1. For the best performance, ensure that the hand throttle is in the Fast position. To get the maximum pulling power, depress the traction pedal slightly.
2. You can control the weeding/cultivating depth with the lift lever. To raise the weeder/cultivator, pull the lift lever up; to lower it, push down on the lift lever. When the weeder/cultivator is in the desired position, release the lever.
3. If a rake attachment and the weeder/cultivator are both mounted on the machine, but you want only to rake, do one of the following:
 - A. Position the lift arm adjuster blocks to the lockout position (Fig. 6).
 - B. Control the cylinder travel with the lift lever to prevent the weeder/cultivator from lowering.
4. If a rake attachment and the weeder/cultivator are both mounted on the machine, but you desire only to use the weeder/cultivator, do the following:
 - A. Lower the rake and lift the assembly as low as possible.
 - B. Unhook the chains from the lift arm hooks, remove all the slack from the chains, and hook the lower chain links on the hooks.

Note: To properly operate the rake, first return the chains to the original slack positioning hooks before operating it.

Note: The Sand Pro has a double-acting lift cylinder. You can apply downward pressure to the weeder/cultivator for certain ground and sand conditions by pushing down on the lift lever. If the wheels spin while weeding or cultivating, raise the weeder/cultivator slightly. At times the engine may begin to overload. When it does, gradually release the traction pedal to increase the engine speed and power.