



Mid-Size ProLine T-Bar, Gear, 17 HP with 44in Side Discharge Mower

Model No. 30327 - 240000001 and up.

Parts Catalog

Ordering Replacement Parts

To order replacement parts, please supply the part number, the quantity, and the description of each part desired.

Understanding Reference Numbers

Each Identified part in an illustration has a reference number. The reference number for a part also appears in the parts list, along with other information about the part.

This catalog uses two special reference number formats, one to indicate parts in a service assembly and another to indicate the quantity of a given part in an illustration.

Service Assembly Reference Numbers

Parts in service assemblies have reference numbers in the form a:b. The a represents the reference number of the entire service assembly and the b represents a sequential number unique to each part within the service assembly.

For example, a wheel assembly might be identified by reference number 6, the tire by 6:1, the valve by 6:2, and the wheel by 6:3. When you order the assembly identified by reference number 6, you receive all parts identified by reference numbers 6:1, 6:2, and 6:3. However, you may also order any part individually. Reference numbers of this type appear in illustrations and in part lists.

Reference Numbers Indicating Quantity

In an illustration, if a reference number indicates more than one part, the reference number has the form nX y. The n represents the quantity of the part, the X is the multiplication symbol, and the y represents the reference number.

For example, in an illustration, the reference number 2X 37 means that two of the parts identified by reference number 37 are indicated.

Contents

Description	Page	Description	Page
Engine Installation Assembly 3	Lubrication Equipment Assembly Kawasaki FH541V-AS30 19
Fuel Tank Assembly 4	Cooling Equipment Assembly Kawasaki FH541V-AS30 20
Lower Control Assembly 5	Electric Equipment Assembly Kawasaki FH541V-AS30 21
Transmission Drive Assembly 6	Control Equipment Assembly Kawasaki FH541V-AS30 22
Wheel Drive and Brake Assembly 7	Carburetor Assembly Kawasaki FH541V-AS30 23
Upper Handle Assembly 8	Muffler and Air Filter Assembly Kawasaki FH541V-AS30 24
Control Panel Assembly 9	Fuel Tank/Fuel Valve Assembly Kawasaki FH541V-AS30 25
Carrier Frame Assembly 10	Starter Assembly Kawasaki FH541V-AS30 26
Spindle, Pulley and Belt Assembly 11	Decal Assembly Kawasaki FH541V-AS30 27
Spindle Assembly No. 106-0786 12		
Spindle Assembly No. 106-0784 13		
Deck Assembly 14		
Drive Belt and Tensioner Assembly 15		
Cylinder/Crankcase Assembly Kawasaki FH541V-AS30 16		
Piston/Crankshaft Assembly Kawasaki FH541V-AS30 17		
Valve and Camshaft Assembly Kawasaki FH541V-AS30 18		

Part Description Abbreviations

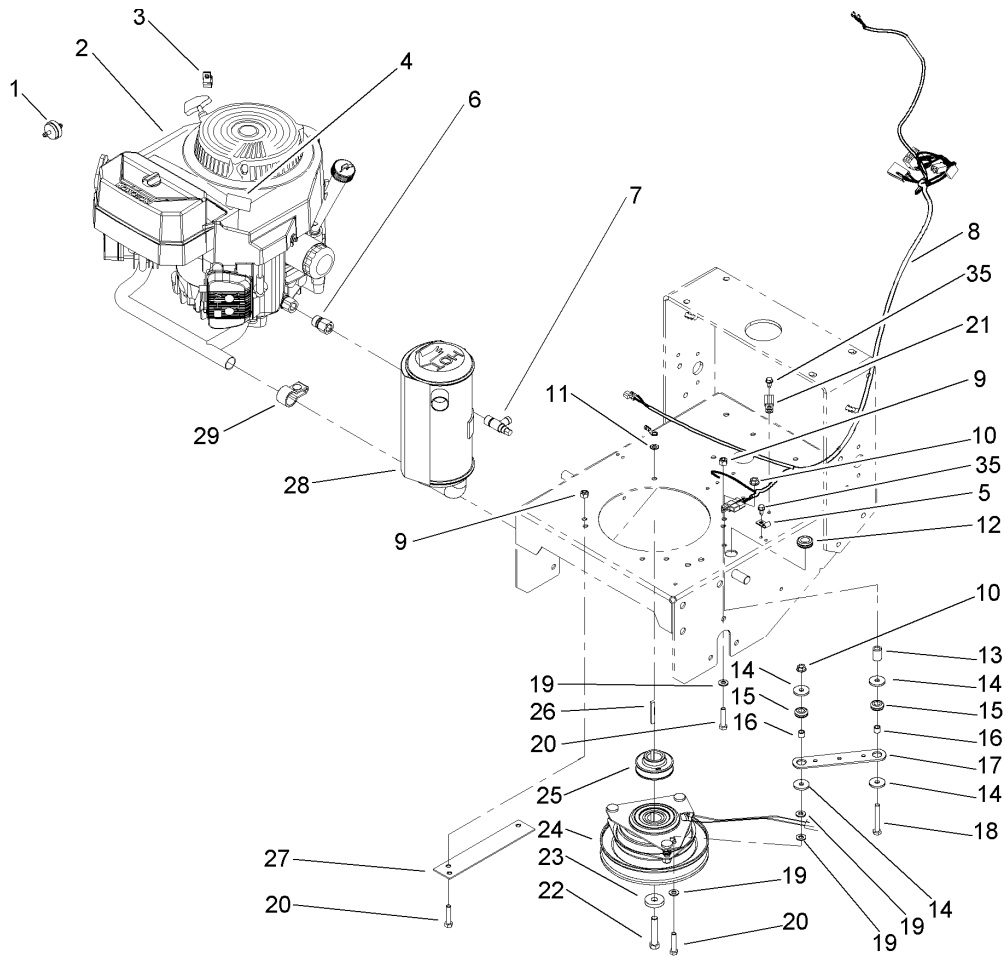
Part descriptions in this catalog may include the following abbreviations.

AR. as required	INC. incorporated
ASM. assembly	LH. left hand
CARR. carriage	NI. nylon insert
DEG. degrees	PPH. phillips pan head
FH. flat head	PTH. phillips truss head
GA. gauge	PTO. power take off
HF. hex flange	RH. right hand
HH. hex head	SFH. slotted fillister head
HHF. hex head flange	SHH. slotted hex head
HHFTF. hex head flange thread forming	SHWH. slotted hex washer head
HJ. hex jam	SPH. slotted pan head
HLH. hex lag head	SQH. square head
HOC. height-of-cut	SRH. slotted round head
HS. hex	STD. standard
HSBH. hex socket button head	TAP. self tapping
HSFH. hex socket flat head	TTH. torx truss head
HS. hex socket head	WH. wing head
HWH. hex washer head	
HWHTF. hex washer head thread forming	
HYD. hydraulic	

PROTOTYPE

Footnotes

- ❶ Not illustrated
- ❷ Not serviced separately
- ❸ Obtain parts from your local Kawasaki dealer

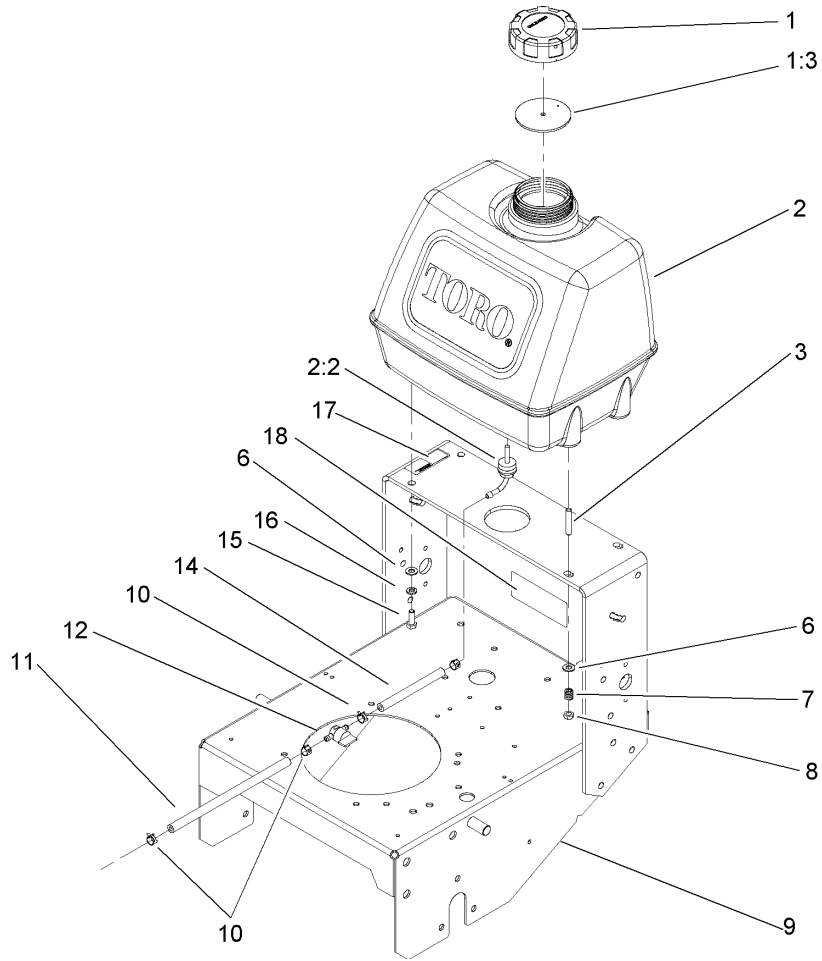


Engine Installation Assembly

Ref	Part No.	Qty.	Description
1	56-6360	1	Filter-Fuel
2		1	Engine-Kawasaki, Fh541v-As30
3	2412-87	1	Clamp-Cable
4	106-0699	1	Decal-Warning, Hot Surfaces
5	2412-72	1	Clip-Closed, Insulated
6	103-1966	1	Adapter
7	103-1965	1	Valve-Drain, Oil
8	104-8137	1	Harness-Wire
9	3296-29	4	Nut-Lock, NI
10	32128-20	2	Nut-HF
11	3255-8	1	Washer-Lock
12	237-124	1	Grommet
13	104-6373	1	Tube-Retainer
14	1-613235	4	Washer
15	1-633630	2	Grommet-Brake
16	1-633545	2	Spacer
17	1-633543-03	1	Strap-Clutch, Brake
18	322-11	1	Screw-HH
19	3256-23	5	Washer-Flat
20	322-7	5	Screw-HH
21	2412-134	1	R-Clamp
22	3212-9	1	Screw-HH
23	112843	1	Washer
24	105-2635	1	Clutch/brake

Ref	Part No.	Qty.	Description
25	105-0827	1	Pulley-Drive
26	608006	1	Key-Square
27	94-5847-01	1	Cover-Pulley
28	100-6467	1	Muffler
29	103-5465	1	Clamp-Muffler
35	12-3270	2	Screw
99	103-1964	1	Hose-Drain, Oil

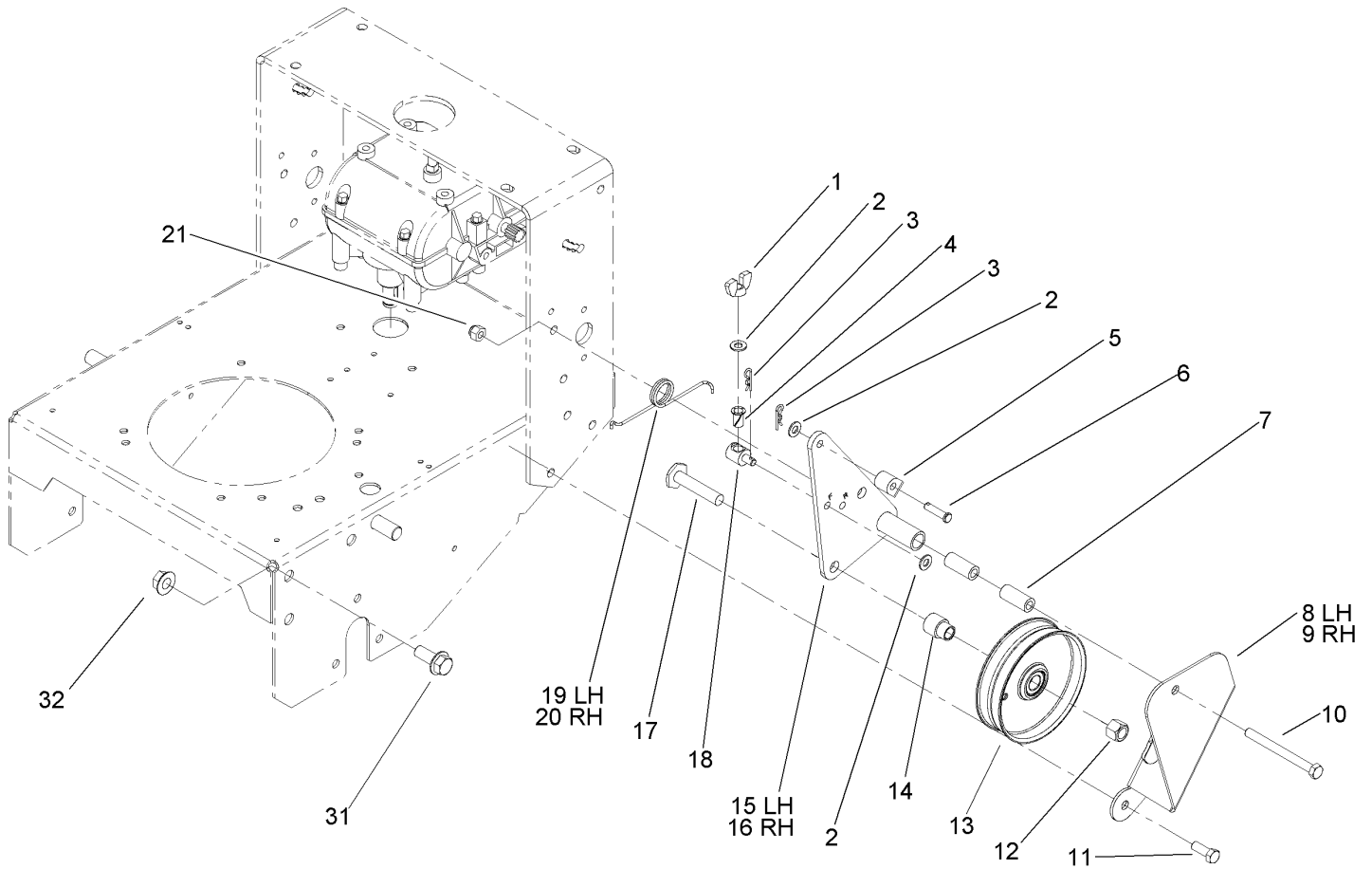
PROTOTYPE



Fuel Tank Assembly

Ref	Part No.	Qty.	Description
1	88-3980	1	Gas Cap ASM
1:3	88-4010	1	Gasket-Cap, Gas
2	106-0730	1	Fuel Tank ASM
2:2	103-2605	1	Fitting-Fuel, Bulkhead
3	104-8121	2	Stud-Threaded
6	3256-23	4	Washer-Flat
7	1-633349	2	Spring-Tank, Fuel
8	3296-47	2	Nut-Lock, NI
9	106-0546-01	1	Gear Frame ASM
10	2412-98	4	Clamp
11	47-2982	1	Hose-Fuel
12	1-603770	1	Valve-Fuel
14	47-2966	1	Hose-Fuel
15	322-4	2	Screw-HH
16	3253-4	2	Washer-Lock
17	95-2814	1	Decal-Shut Off, Fuel
18	98-0776	1	Decal-Caution

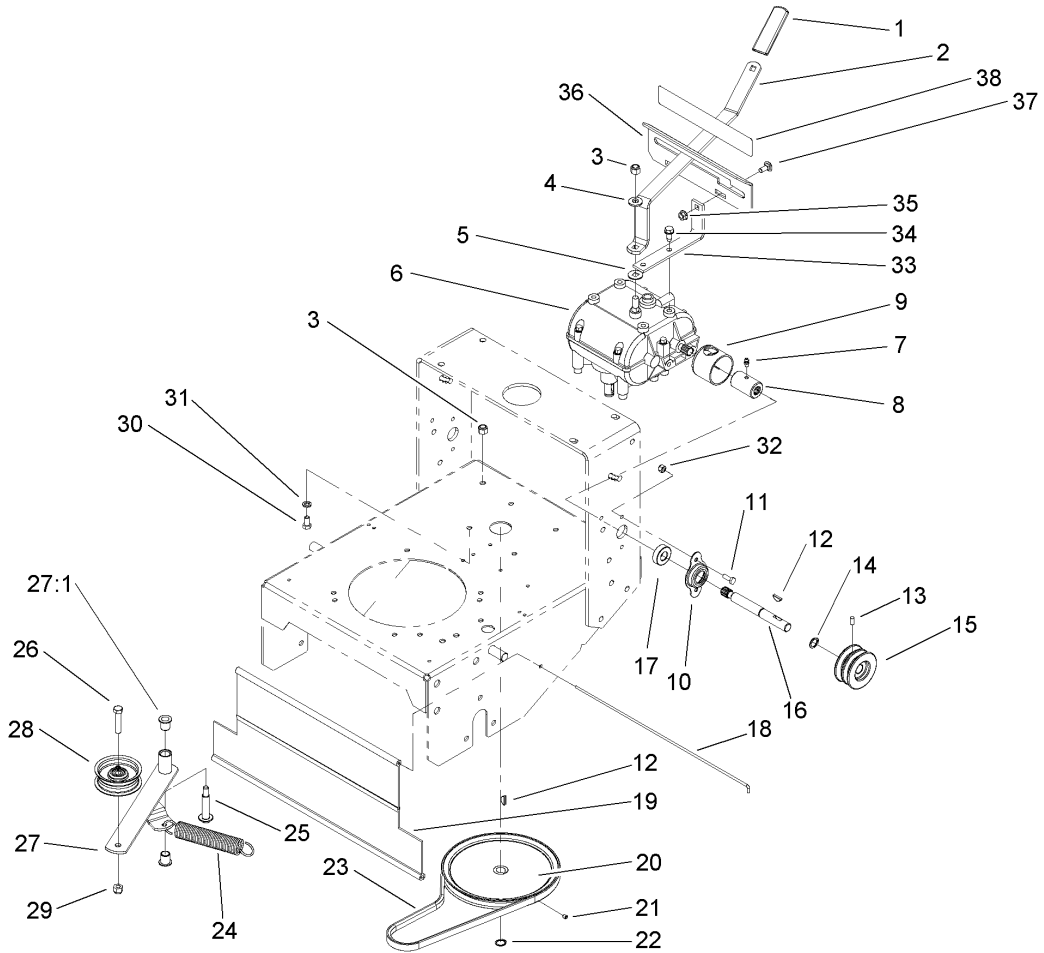
<p style="font-size: 48px; opacity: 0.5;">PROTOTYPE</p>			
---	--	--	--



Lower Control Assembly

Ref	Part No.	Qty.	Description
1	32103-25	2	Nut-Wing
2	3256-23	6	Washer-Flat
3	3290-307	4	Pin-Hair
4	52-2890	2	Bushing-Nylon
5	74-0521	2	Fitting-Rod
6	283-6	2	Pin-Clevis
7	74-0040	4	Spacer-Pivot, Idler
8	67-6380-01	1	Bracket-Support, LH
9	67-6370-01	1	Bracket-Support, RH
10	323-16	2	Screw-HH
11	323-6	4	Screw-HH
12	3296-23	2	Nut-Lock, NI
13	95-2800	2	Pulley-Idler
14	95-2801	2	Spacer-Pulley
15	74-0220-01	1	Bracket-Idler, LH
16	74-0230-01	1	Bracket-Idler, RH
17	51-4450	2	Screw-Leveler
18	68-9690	2	Fitting-Rod
19	51-4380	1	Spring-Torsion, LH
20	51-4370	1	Spring-Torsion, RH
21	3296-39	6	Nut-Lock, NI
31	3234-32	6	Screw-HHF
32	32128-23	6	Nut-HF

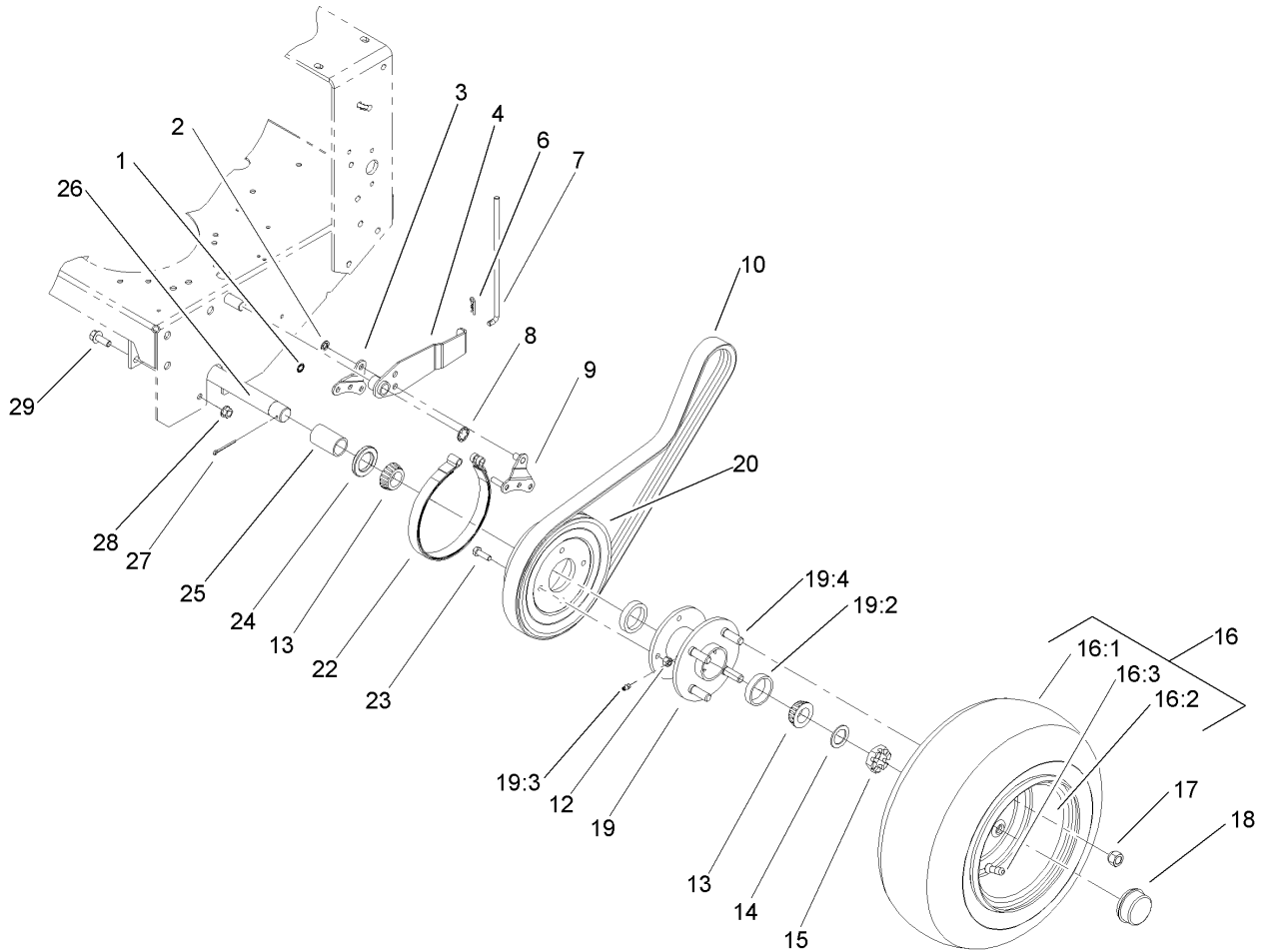
<p style="font-size: 48px; opacity: 0.5;">PROTOTYPE</p>			
---	--	--	--



Transmission Drive Assembly

Ref	Part No.	Qty.	Description
1	47-1970	1	Grip
2	98-3274-03	1	Lever-Shift
3	3296-6	2	Nut-Lock, NI
4	98-5975	1	Washer-Belleville
5	1-323379	1	Washer
6	1-323500	1	Transmission
7	302-5	2	Fitting-Grease
8	1-323680	2	Coupler
9	51-4220	2	Guard-Coupler
10	1-323254	2	Flange-Output
11	321-4	4	Screw-HH
12	3257-5	3	Key-Woodruff
13	3245-9	2	Screw-Set
14	32151-62	2	Ring-Retaining
15	105-2698	2	Pulley-Transmission
16	104-1102	2	Shaft-Output
17	1-323252	2	Bearing-Shaft
18	95-1529	1	Rod-Shield
19	95-1526	1	Shield-Trailing
20	105-5646	1	Pulley-Driven
21	3245-1	1	Screw-Set, HSH
22	32120-64	1	Ring-Snap, External
23	105-5668	1	V-Belt
24	68-2190	1	Spring

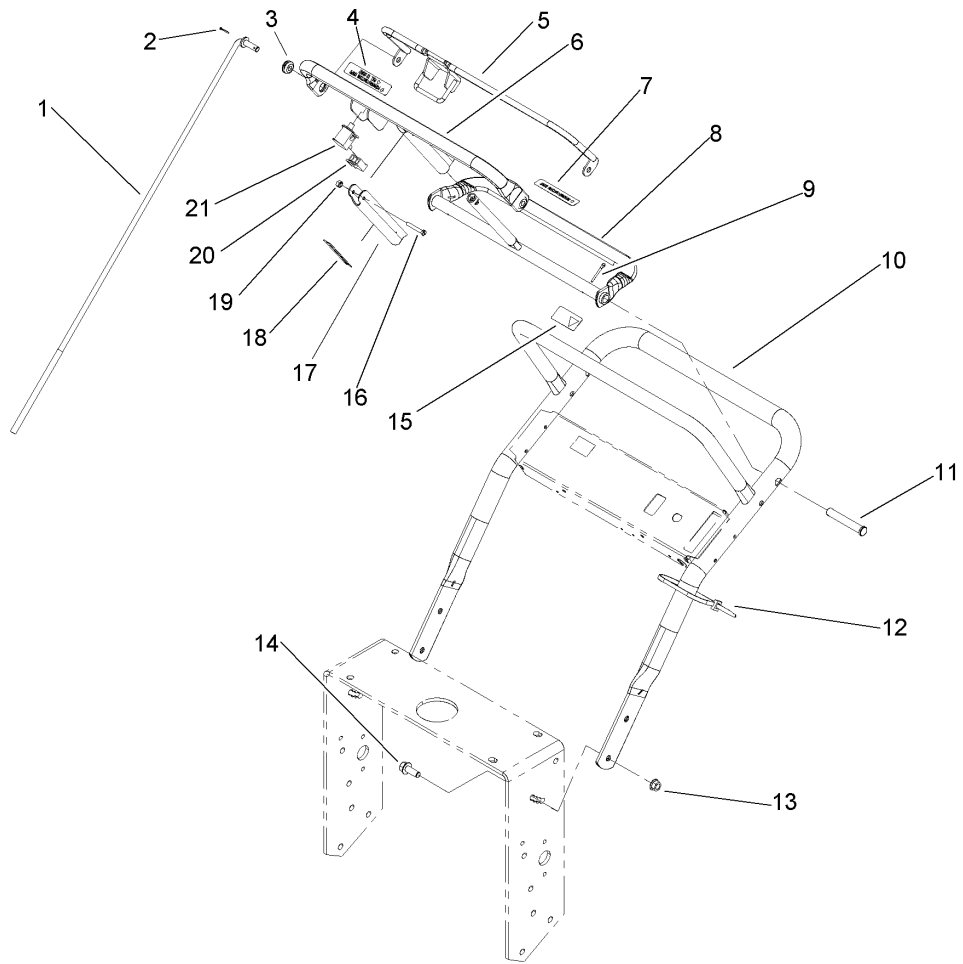
Ref	Part No.	Qty.	Description
25	27-6230	1	Bolt-Wheel
26	323-9	1	Screw-HH
27	16-7509	1	Lever-Idler
27:1	256-155	2	Bushing-Flange
28	62-4540	1	Pulley
29	3296-39	1	Nut-Lock, NI
30	322-2	4	Screw-HH
31	3253-4	4	Washer-Lock
32	3296-42	4	Nut-Lock, NI
33	1-323389-03	2	Bracket-Plate, Shift
34	9264964	4	Screw-Hwh, Thd Cut
35	32128-20	2	Nut-HF
36	1-323387-03	1	Plate-Shift
37	3230-1	2	Bolt-CARR
38	98-3256	1	Decal-Speed, Ground



Wheel Drive and Brake Assembly

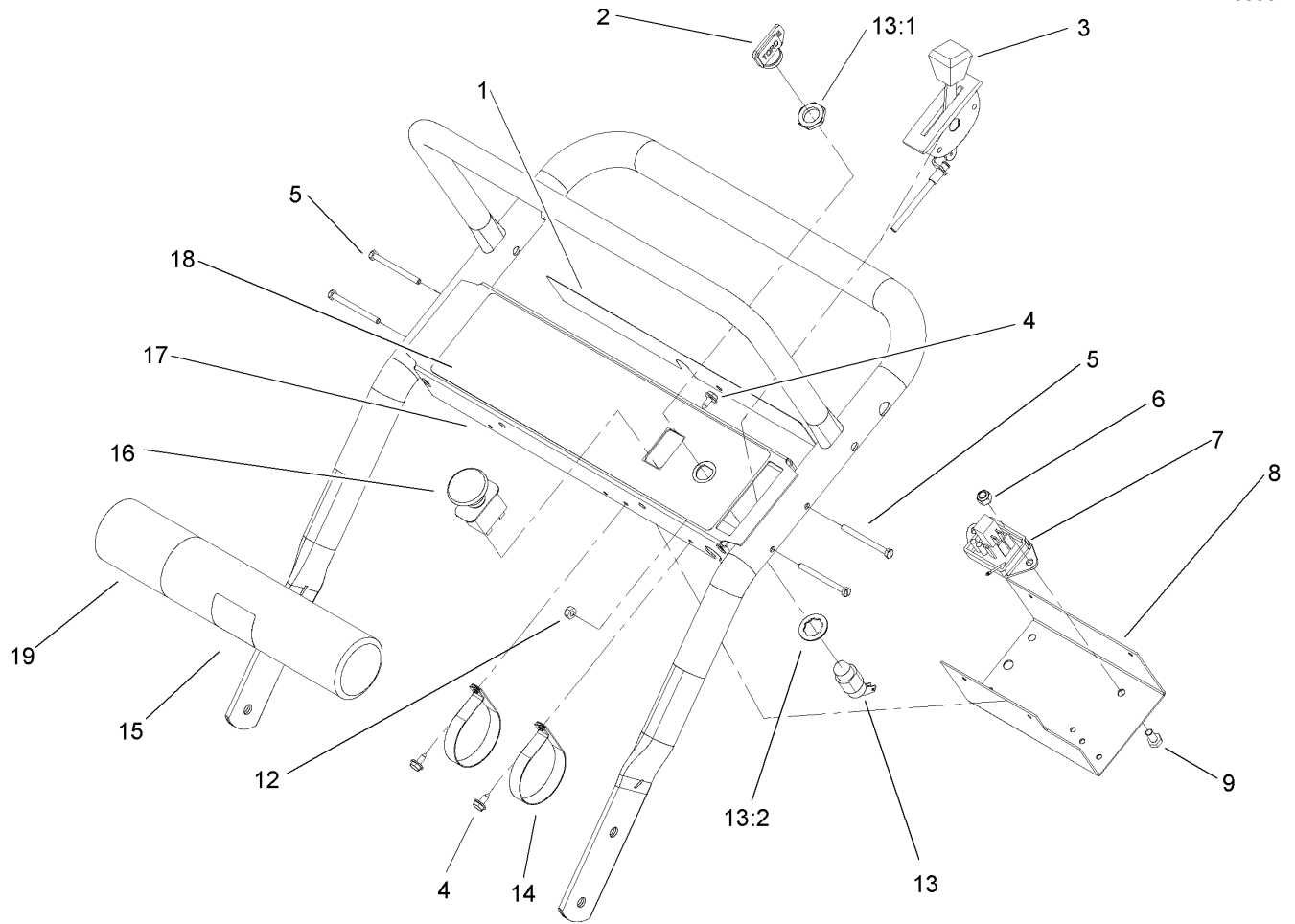
Ref	Part No.	Qty.	Description
1	32151-72	4	Ring-Retaining
2	32151-56	2	Ring-Retaining, External
3	106-8792	2	Plate-Link, Brake
4	106-8779-01	2	Brake Arm ASM
6	3290-307	2	Pin-Hair
7	51-4580	2	Rod-Brake
8	32151-40	2	Ring-Retaining
9	106-8773	2	Brake Link ASM
10	51-4290	2	V-Belt
12	3296-29	8	Nut-Lock, NI
13	254-94	4	Bearing-Cone, Tapered
14	1-523157	2	Washer-Spacer
15	1-809082	2	Nut-SHH
16	106-0892	2	Wheel And Tire ASM
16:1	104-6322	1	Tire
16:2	106-0893	1	Wheel
16:3	232-27	1	Stem-Valve
17	242-50	8	Nut-Lug
18	241-119	2	Cap-Dust
19	1-413333	2	Hub/wheel ASM
19:2	254-72	2	Bearing-Cup, Tapered
19:3	302-19	1	Fitting-Grease
19:4	1-633926	4	Stud-Wheel
20	106-5544	2	Pulley-Wheel

Ref	Part No.	Qty.	Description
22	1-323262	2	Band-Brake
23	322-5	8	Screw-HH
24	1-543511	2	Seal-Grease
25	104-1197	2	Spacer-Wheel
26	104-1196-01	1	Axle ASM
27	1-806800	2	Pin-Cotter
28	32128-21	6	Nut-HF
29	3234-11	6	Screw-HHF



Upper Handle Assembly

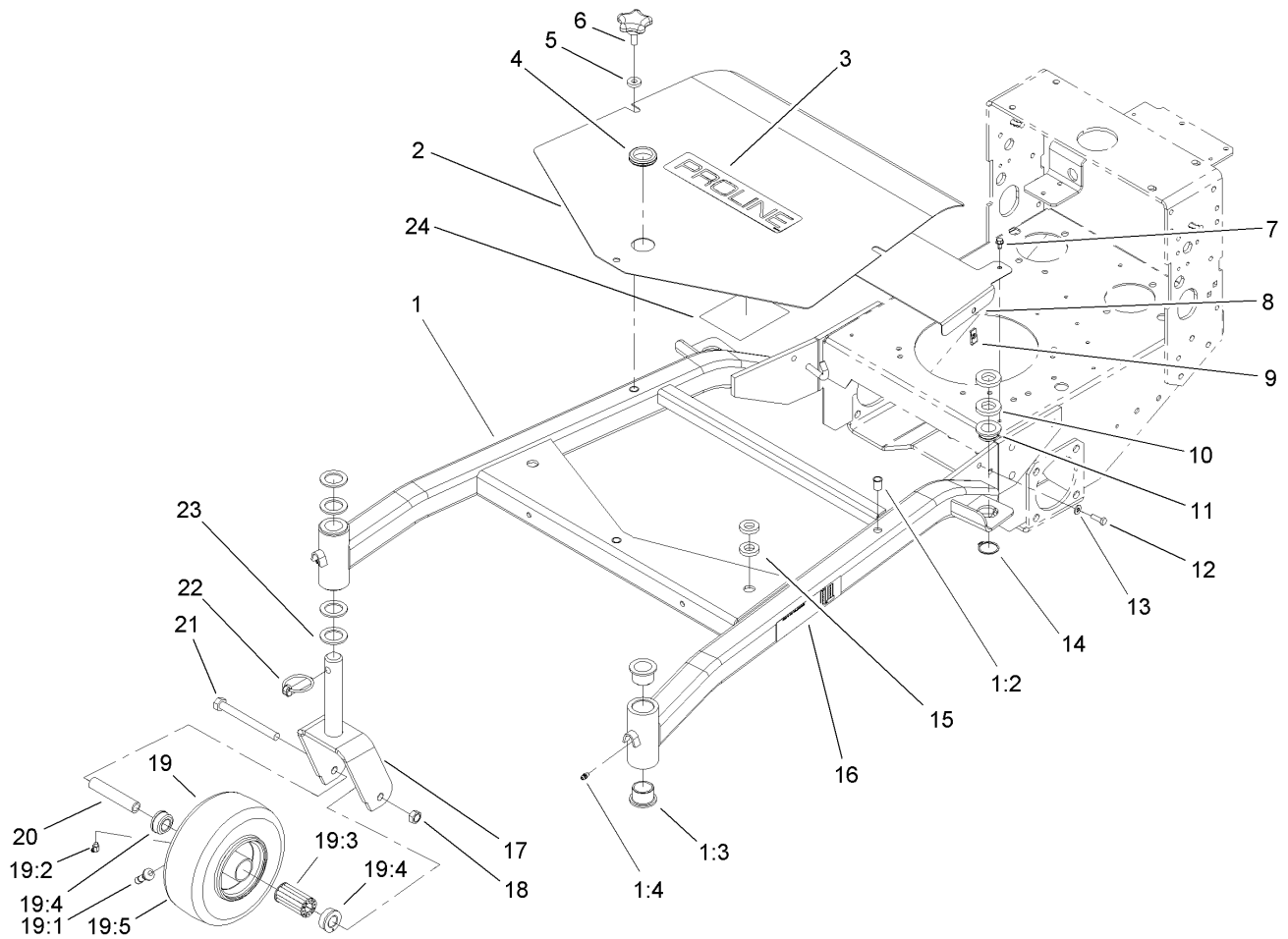
Ref	Part No.	Qty.	Description
1	105-4677	2	Rod-Control
2	3272-4	2	Pin-Cotter
3	237-141	2	Grommet-Rubber
4	82-2290	1	Decal
5	82-7680-03	1	Bail ASM
6	82-7690-03	1	Bar-Control
7	82-2280	1	Decal
8	106-5477-03	1	Control Pivot ASM
9	3272-11	2	Pin-Cotter
10	105-3158-03	1	Upper Handle ASM
11	283-55	2	Pin-Clevis
12	3290-378	1	Tie-Cable
13	32128-21	4	Nut-HF
14	3234-11	4	Screw-HHF
15	98-4387	1	Decal-Protection, Ear
16	32105-1	1	Screw-SHH
17	51-4850-03	1	Lever-Brake, Parking
18	52-2010	1	Decal-Lever, Parking
19	3296-2	1	Nut-Lock
20	218-595	1	Connector-Body
21	82-2190	1	Switch-Bail



Control Panel Assembly

Ref	Part No.	Qty.	Description
1	105-0884	1	Decal-Danger
2	63-8360	1	Key-Ignition
3	107-4102	1	Cable-Throttle
4	32104-76	4	Screw
5	32105-14	4	Screw-SHH
6	3296-42	1	Nut-Lock, NI
7	104-8141	1	Module-Delay
8	93-1187-03	1	Panel-Bottom
9	321-2	1	Screw-HH
12	3296-2	4	Nut-Lock
13	29-5560	1	Switch-On/off
13:1	218-461	1	Nut-HH
13:2	3254-5	1	Washer-Tooth
14	2412-120	2	R-Clamp
15	104-7050	1	Housing-Manual
16	104-8140	1	Switch-PTO
17	104-8177-03	1	Panel-Control
18	106-5499	1	Decal-Control Panel
19	104-7048	1	Cap-Housing

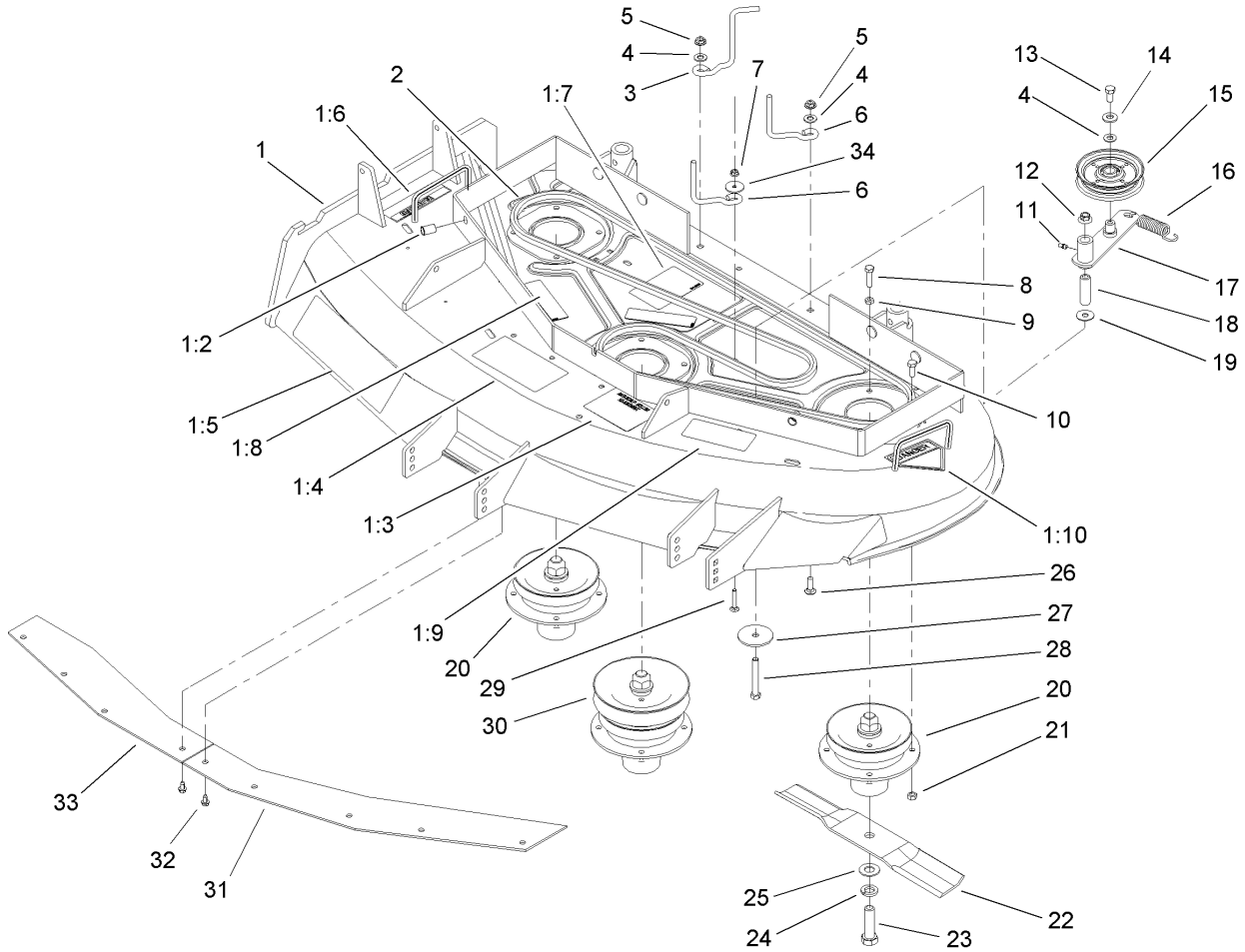
<p style="font-size: 48px; opacity: 0.5;">PROTOTYPE</p>			
---	--	--	--



Carrier Frame Assembly

Ref	Part No.	Qty.	Description
1	106-0707	1	Carrier Frame ASM
1:2	32148-9	3	Insert-Nut
1:3	94-1291	4	Bushing
1:4	302-5	2	Fitting-Grease
2	106-0537-01	1	Cover
3	106-0719	1	Decal
4	240-3	1	Grommet-Rubber
5	106-0565	3	Washer-Rubber
6	106-0887	3	Knob
7	12-3270	2	Screw
8	105-9389-01	1	Shield-Heat
9	3290-199	2	Nut-Speed
10	104-1105	4	Spacer-Support, Deck
11	1-513336	2	Bushing-Deck
12	321-5	2	Screw-HH
13	3256-22	2	Washer-Flat
14	32120-33	2	Ring-Retaining
15	105-0842	4	Spacer
16	106-0635	2	Decal-HOC
17	105-3159-01	2	Castor Fork ASM
18	32153-5	2	Nut-Lock
19	100-6451	2	Castor Wheel ASM
19:1	232-27	1	Stem-Valve
19:2	302-11	1	Fitting-Lube, 45 DEG

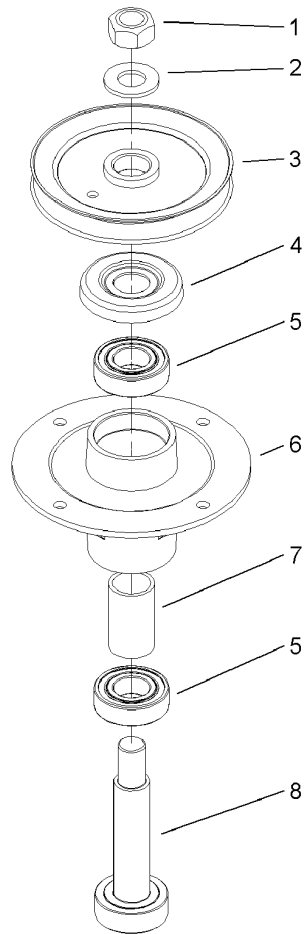
Ref	Part No.	Qty.	Description
19:3	83-4740	1	Bearing
19:4	62-5580	2	Bearing-Outside
19:5	100-6452	1	Tire-Tubeless
20	100-6453	2	Bushing-Spanner
21	325-19	2	Screw-HH
22	283-71	2	Pin-Lynch
23	3-6781	8	Washer-Thrust
24	106-5503	1	Decal-Service, Hydro Tbar
24	106-5505	1	Decal-Service, Gear Tbar
24	106-5511	1	Decal-Service, Gear Pistol Grip
24	106-5513	1	Decal-Service, Hydro Pistol Grip



Spindle, Pulley and Belt Assembly

Ref	Part No.	Qty.	Description
1	106-0617	1	Deck ASM
1:2	32148-10	2	Insert-Threaded
1:3	106-5532	1	Decal-Scalp, Anti
1:4	66-1340	1	Decal-Danger
1:5	106-0704	1	Decal
1:6	104-8569	1	Decal-Warning
1:7	104-8186	1	Decal-Routing, Belt
1:8	67-5360	3	Decal-Danger
1:9	68-8340	1	Decal-Torque
1:10	43-8480	1	Decal-Danger
2	27-1160	1	V-Belt
3	106-5488	1	Guide-Belt
4	3256-24	3	Washer-Flat
5	32128-13	2	Nut-HF
6	52-4780	2	Rod-Belt
7	32128-10	1	Nut-Lock, HHF
8	322-6	1	Screw-HH
9	3218-2	1	Nut-Jam
10	322-4	11	Screw-HH
11	302-19	1	Fitting-Grease
12	32128-19	1	Nut-HF
13	323-4	1	Screw-HH
14	98-5975	1	Washer-Belleville
15	65-5940	1	Pulley-Idler

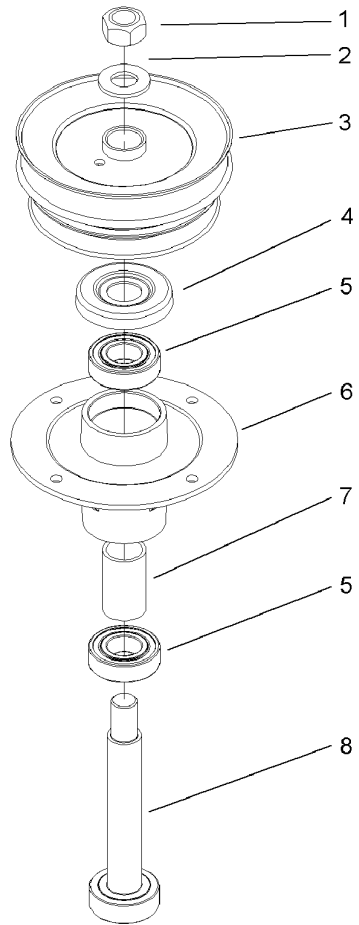
Ref	Part No.	Qty.	Description
16	54-2730	1	Spring-Extension
17	104-8110	1	Idler Arm ASM
18	104-8113	1	Tube-Idler
19	52-2860	1	Washer
20	106-0786	2	Spindle Housing ASM
21	32152-1	12	Nut-Lock, NI
22	54-0010	3	Blade
23	51-4060	3	Screw-Blade
24	3253-8	3	Washer-Lock
25	3256-27	3	Washer-Flat
26	3230-2	2	Bolt-CARR
27	20-9530	1	Washer-End
28	323-13	1	Screw-HH
29	3229-4	1	Screw-CARR
30	106-0784	1	Spindle Housing ASM
31	100-3258-03	1	Plate-Blowout, LH
32	12-3270	9	Screw
33	100-3257-03	1	Plate-Blowout, RH
34	1-503033	1	Washer-Retainer, Pulley



Spindle Assembly No. 106-0786

Ref	Part No.	Qty.	Description				
1	3219-7	1	Nut-Hex				
2	7-4150	1	Washer				
3	104-1181	1	Pulley ASM				
4	106-0873	1	Shield-Bearing				
5	104-6325	2	Bearing				
6	106-0818	1	Housing-Spindle				
7	106-0794	1	Spacer-Bearing				
8	106-0780	1	Shaft-Spindle				

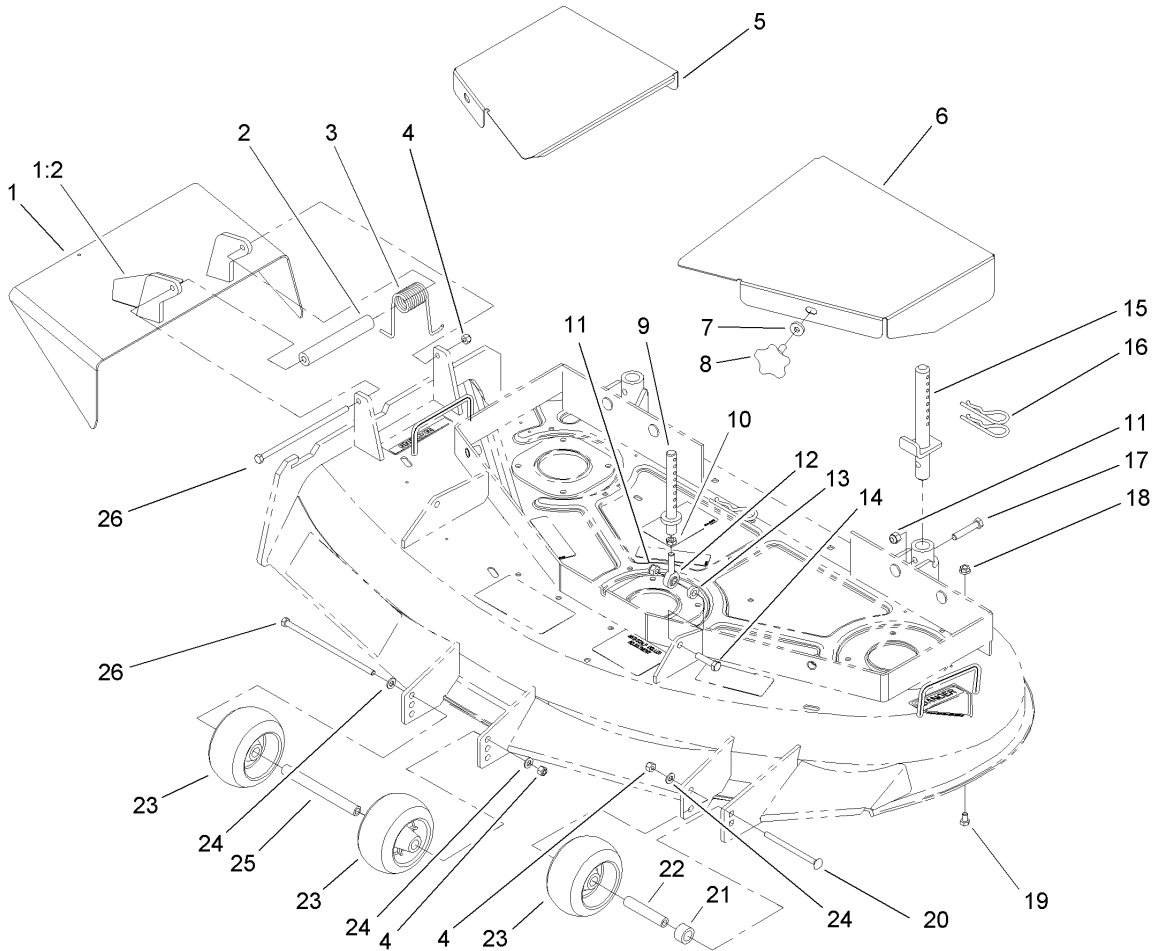
PROTOTYPE



Spindle Assembly No. 106-0784

Ref	Part No.	Qty.	Description
1	3219-7	1	Nut-Hex
2	7-4150	1	Washer
3	104-1116	1	Pulley And Hub ASM
4	106-0873	1	Shield-Bearing
5	104-6325	2	Bearing
6	106-0818	1	Housing-Spindle
7	106-0794	1	Spacer-Bearing
8	106-0779	1	Shaft-Spindle

PROTOTYPE

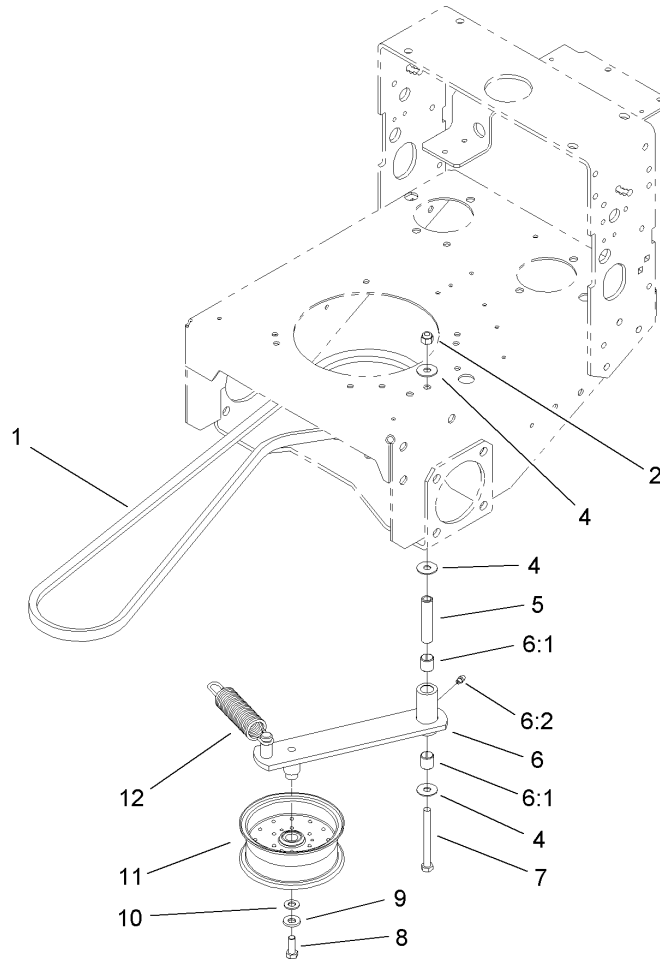


Deck Assembly

Ref	Part No.	Qty.	Description
1	105-4625	1	Deflector ASM
1:2	93-1122	1	Decal-Danger
2	105-4622	1	Spacer
3	104-8554	1	Spring-Torsion
4	3296-29	3	Nut-Lock, NI
5	106-3363-01	1	Cover-Belt, RH
6	106-3362-01	1	Cover-Belt, LH
7	106-0565	2	Washer-Rubber
8	106-0887	2	Knob
9	106-0684	2	Front Pin ASM
10	3220-3	2	Nut-Jam
11	3296-39	4	Nut-Lock, NI
12	1-613204	2	Balljoint
13	104-1156	2	Spacer
14	323-8	2	Screw-HH
15	106-3365	2	Rear Pin ASM
16	3290-256	6	Pin-Hair
17	323-10	2	Screw-HH
18	32128-20	4	Nut-HF
19	322-1	4	Screw-HH
20	3230-30	1	Screw-CARR
21	106-0563	1	Spacer-Wheel
22	106-0545	1	Bushing-Roller
23	68-2730	3	Wheel-Gage

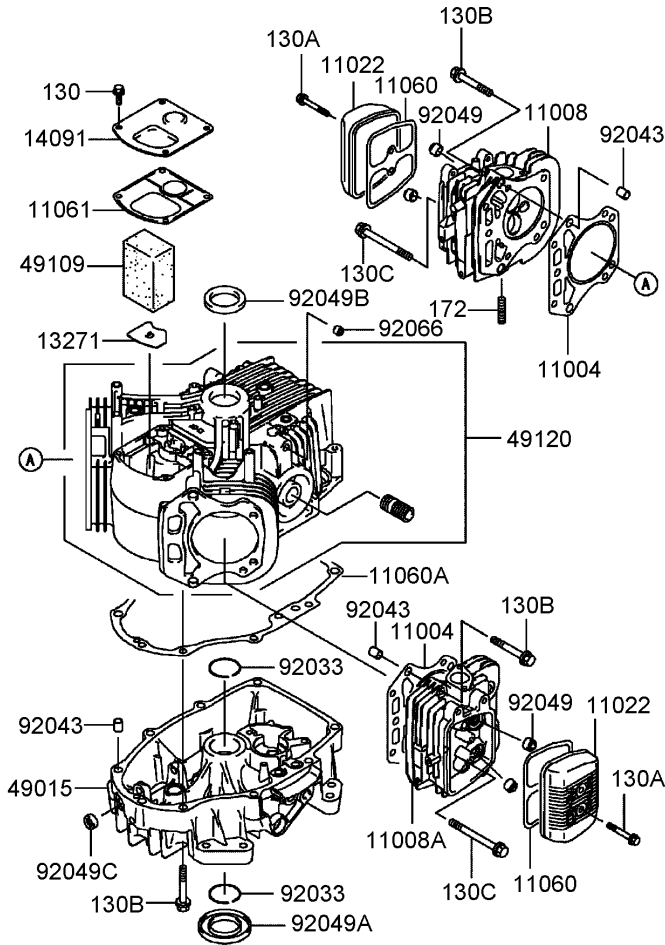
Ref	Part No.	Qty.	Description
24	3256-23	3	Washer-Flat
25	98-5967	1	Spacer-Wheel
26	322-50	2	Screw-HH

PROTOTYPE



Drive Belt and Tensioner Assembly

Ref	Part No.	Qty.	Description				
1	104-8120	1	V-Belt, PTO				
2	3296-39	1	Nut-Lock, NI				
4	52-2860	3	Washer				
5	104-6377	1	Tube-Idler				
6	106-0734	1	Idler Arm ASM				
6:1	1-513034	2	Sleeve-Bearing				
6:2	302-5	1	Fitting-Grease				
7	323-42	1	Screw-HH				
8	323-6	1	Screw-HH				
9	98-5975	1	Washer-Belleville				
10	3256-24	1	Washer-Flat				
11	1-413099	1	Pulley-Idler				
12	105-8443	1	Spring-Extension				

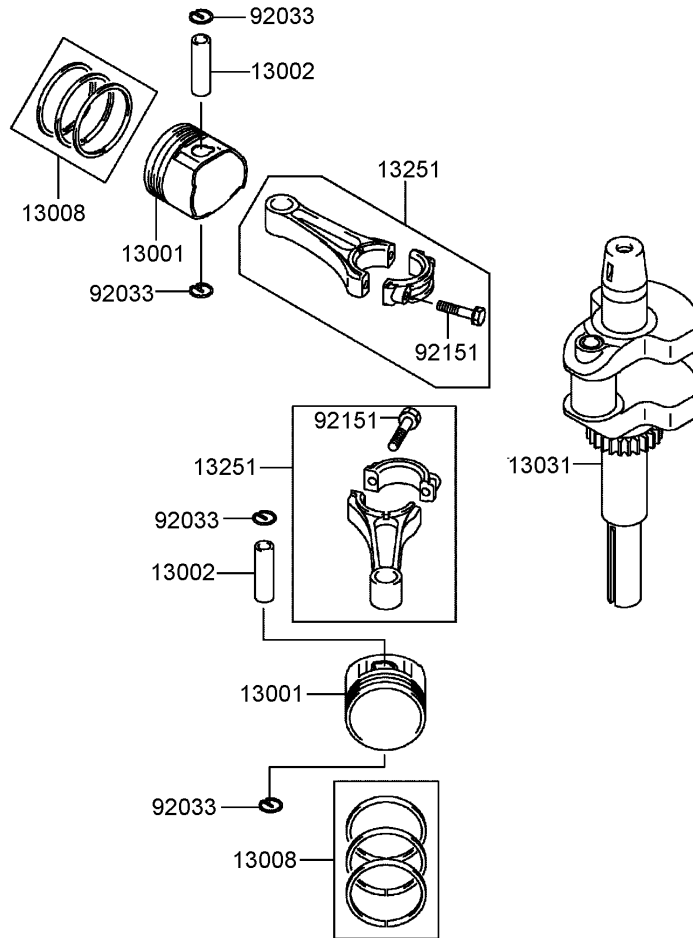


Cylinder/Crankcase Assembly Kawasaki FH541V-AS30

Ref	Part No.	Qty.	Description
①	11004	2	Gasket-Head
①	11008	1	#1 Cylinder Head ASM
①	11008A	1	#2 Cylinder Head ASM
①	11022	2	Case-Rocker
①	11060	1	Gasket-Rocker Case
①	11060A	1	Gasket-Crankcase Cover
①	11061	1	Gasket-Breather
①	13271	1	Plate
①	14091	1	Cover
①	49015	1	Cover-Crankcase
①	49109	1	Element-Breather
①	49120	1	Crankcase-Comp
①	92033	2	Ring-Snap
①	92043	6	Pin
①	92049	4	Seal-Oil, Rvc 26x11x10.2
①	92049A	1	Seal-Oil, Sd
①	92049B	1	Seal-Oil, Sd
①	92049C	1	Seal-Oil, So
①	92066	1	Plug
①	130	4	Bolt-Flanged
①	130A	4	Bolt-Flanged
①	130B	17	Bolt-Flanged
①	130C	2	Bolt-Flanged
①	172	4	Bolt-Stud

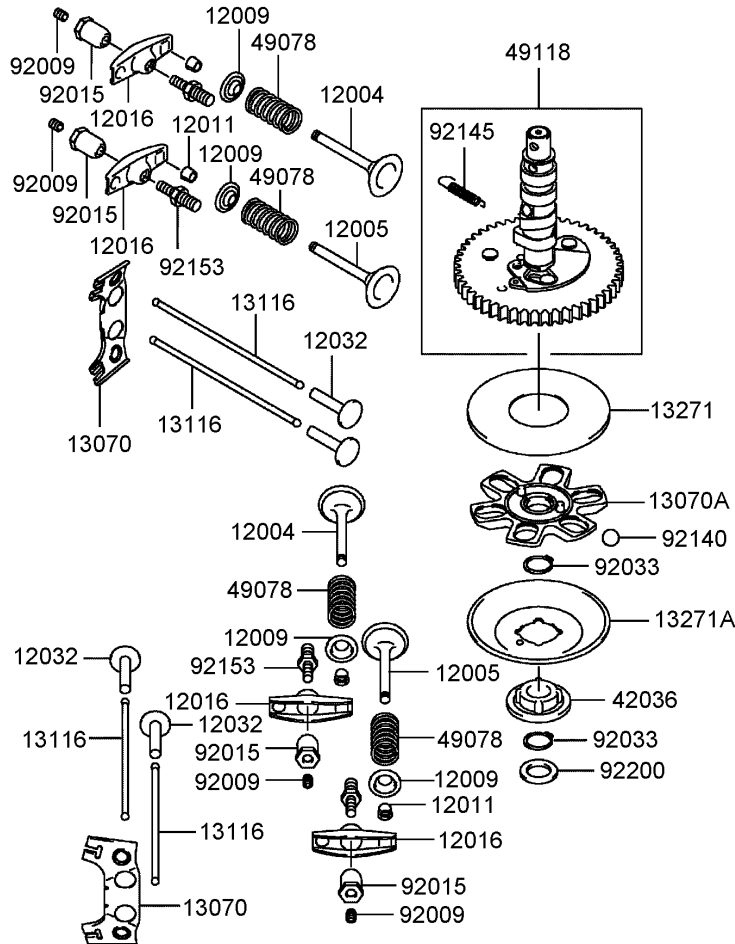
--	--	--	--

PROTOTYPE



Piston/Crankshaft Assembly Kawasaki FH541V-AS30

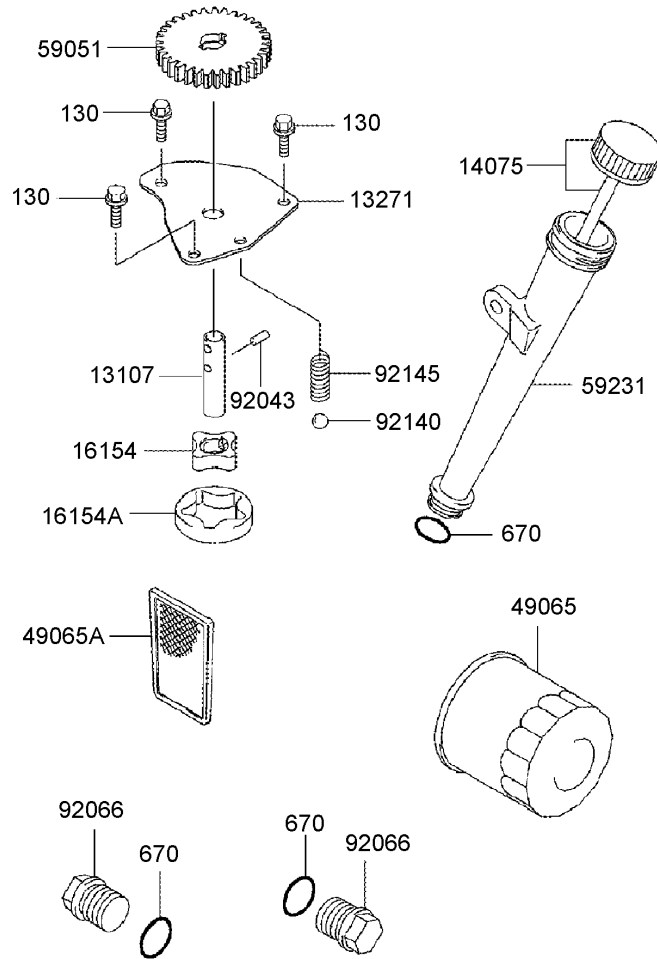
Ref	Part No.	Qty.	Description				
①13001	13001-7010	2	Piston-Engine				
①13002	13002-7001	2	Pin-Piston				
①13008	13008-6060	2	Ring-Set-Piston				
①13031	13031-7036	1	Crankshaft-Comp				
①13251	13251-7010	2	Connecting Rod ASM				
①92033	92033-7005	4	Ring-Snap				
①92151	92151-7017	4	Bolt, 6x35				



Valve and Camshaft Assembly Kawasaki FH541V-AS30

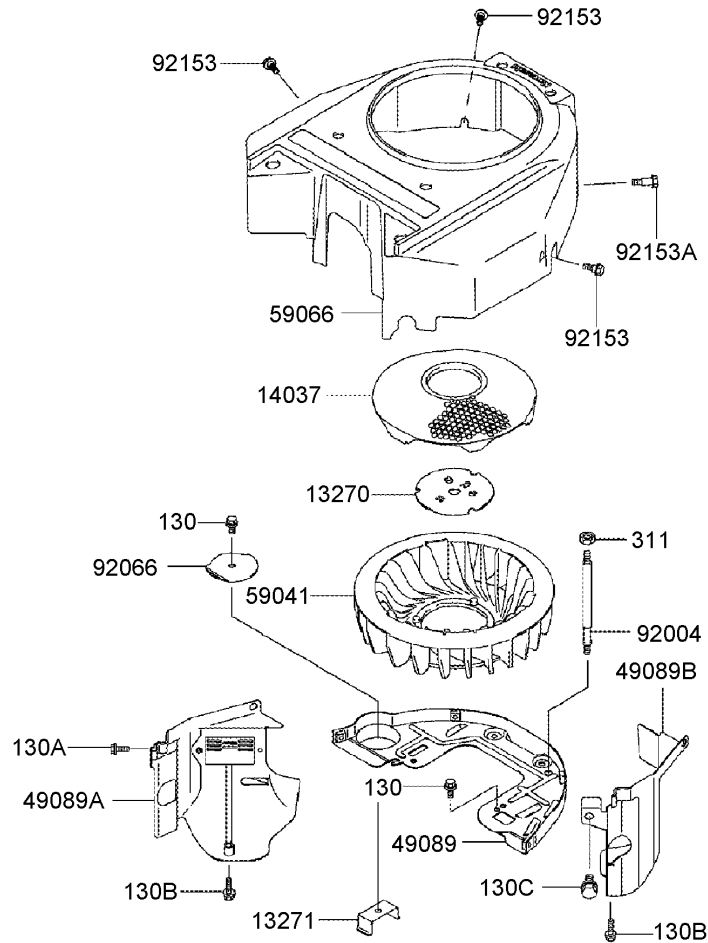
Ref	Part No.	Qty.	Description
①	12004	2	Valve-Intake
①	12005	2	Valve-Exhaust
④	12009	4	Retainer-Valve Spring
⑧	12011	8	Collet
④	12016	4	Arm-Rocker
④	12032	4	Tappet
②	13070	2	Guide
①	13070A	1	Guide
④	13116	4	Rod-Push
①	13271	1	Plate
①	13271A	1	Plate-Governor
①	42036	1	Sleeve
④	49078	4	Spring-Engine Valve
①	49118	1	Camshaft-Comp
④	92009	4	Screw
④	92015	4	Nut
②	92033	2	Ring-Snap
⑥	92140	6	Ball
①	92145	1	Spring
④	92153	4	Bolt
①	92200	1	Washer

--	--	--	--



Lubrication Equipment Assembly Kawasaki FH541V-AS30

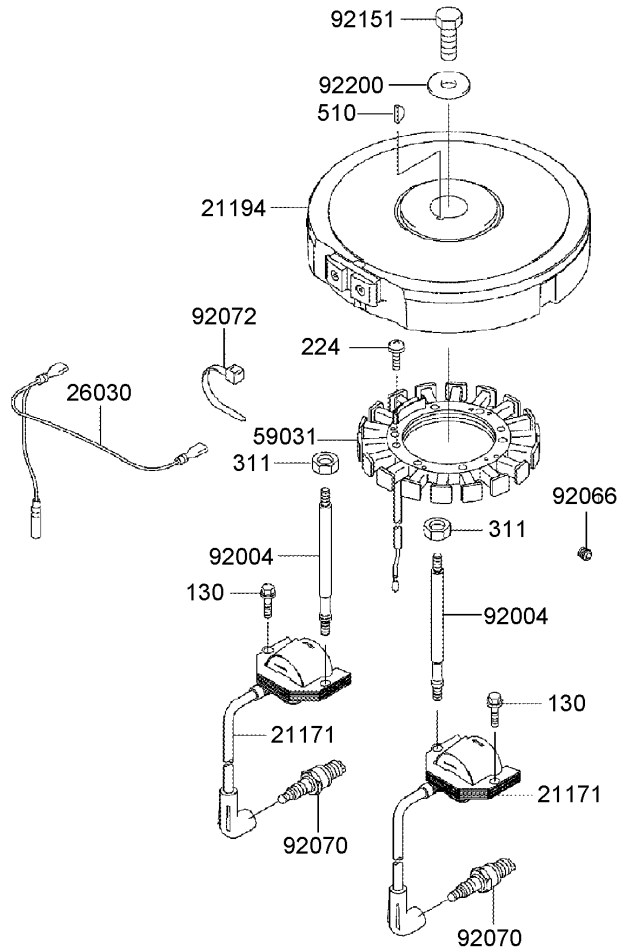
Ref	Part No.	Qty.	Description
⑤13107	13107-7009	1	Shaft
⑤13271	13271-7017	1	Plate
⑤14075	14075-7009	1	Cap ASM
⑤16154	16154-2053	1	Rotor-Pump,in
⑤16154A	16154-2054	1	Rotor-Pump,out
⑤49065	49065-2078	1	Filter-Oil
⑤49065A	49065-7004	1	Filter-Oil
⑤59051	59051-7011	1	Gear-Spur
⑤59231	59231-7005	1	Filler
⑤92043	92043-7003	2	Pin
⑤92066	92066-7003	2	Plug
⑤92140	92140-7003	1	Ball
⑤92145	92145-7002	1	Spring
⑤130	130B0612	3	Bolt-Flanged
⑤670	670D2016	3	O Ring,16mm



Cooling Equipment Assembly Kawasaki FH541V-AS30

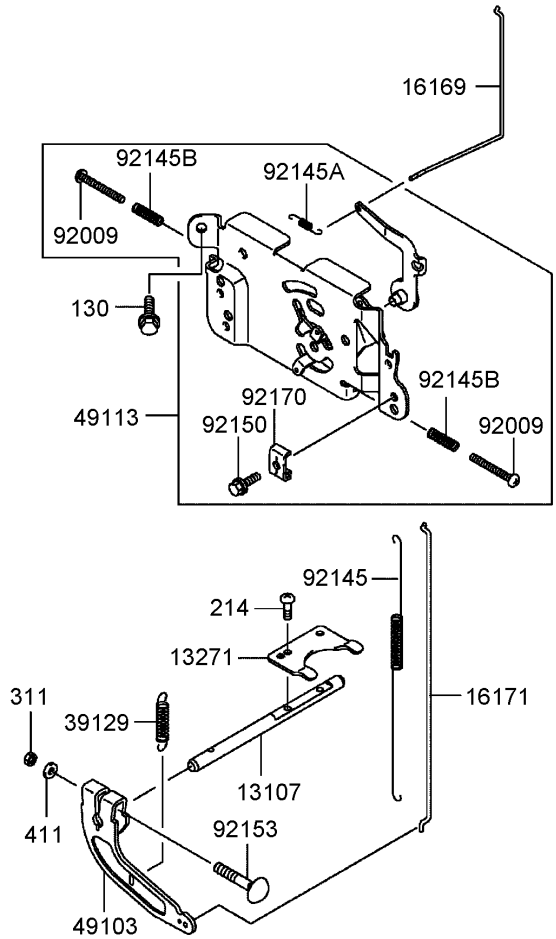
Ref	Part No.	Qty.	Description
⑤ 13270	13270-7007	1	Plate
⑤ 13271	13271-7002	1	Plate
⑤ 14037	14037-7021-9H	1	Screen
⑤ 49089	49089-7032	1	Shroud-Engine
⑤ 49089A	49089-7042	1	Shroud-Engine
⑤ 49089B	49089-7043	1	Shroud-Engine
⑤ 59041	59041-7010	1	Fan
⑤ 59066	59066-7024	1	Housing-Fan
⑤ 92004	92004-7006	2	Stud
⑤ 92066	92066-7004	1	Plug
⑤ 92153	92153-7007	3	Bolt
⑤ 92153A	92153-7008	1	Bolt
⑤ 130	130B0612	3	Bolt-Flanged
⑤ 130A	130B0616	2	Bolt-Flanged
⑤ 130B	130B0625	2	Bolt-Flanged
⑤ 130C	130B0816	1	Bolt-Flanged
⑤ 311	311B0600	2	Nut-Hex

PROTOTYPE



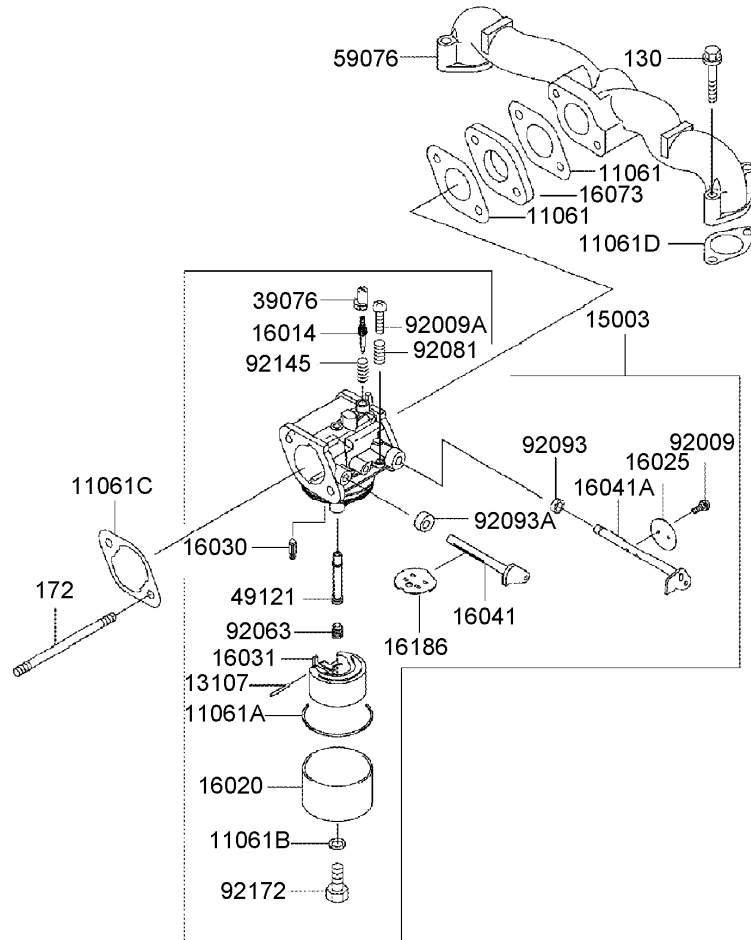
Electric Equipment Assembly Kawasaki FH541V-AS30

Ref	Part No.	Qty.	Description				
⑤21171	21171-7013	2	Coil-Assy-Ignition				
⑤21194	21194-7007	1	Flywheel-Comp				
⑤26030	26030-7001	1	Harness				
⑤59031	59031-7002	1	Coil-Charging				
⑤92004	92004-7009	2	Stud				
⑤92066	92066-7002	1	Plug				
⑤92070	92070-7003	2	Plug-Spark, Rcj8y, Solid				
⑤92072	92072-7003	2	Band				
⑤92151	92151-2097	1	Bolt, 12x30				
⑤92200	92200-7002	1	Washer				
⑤130	130B0620	2	Bolt-Flanged				
⑤224	224B0520	4	Screw-Pan-Wp-Cross				
⑤311	311B0600	2	Nut-Hex				
⑤510	510A5100	1	Key-Woodruff				



Control Equipment Assembly Kawasaki FH541V-AS30

Ref	Part No.	Qty.	Description				
①	13107	1	Shaft				
①	13271	1	Plate				
①	16169	1	Link-Choke				
①	16171	1	Link				
①	39129	1	Spring-Governor				
①	49103	1	Arm-Governor				
①	49113	1	Panel-Control, Comp				
②	92009	2	Screw, 4x35				
①	92145	1	Spring				
①	92145A	1	Spring				
②	92145B	2	Spring				
①	92150	1	Bolt, 5x18				
①	92153	1	Bolt, 6x35				
①	92170	1	Clamp				
②	130	2	Bolt-Flanged				
②	214	2	Screw-Pan				
①	311	1	Nut-Hex				
①	411	1	Washer-Plain				

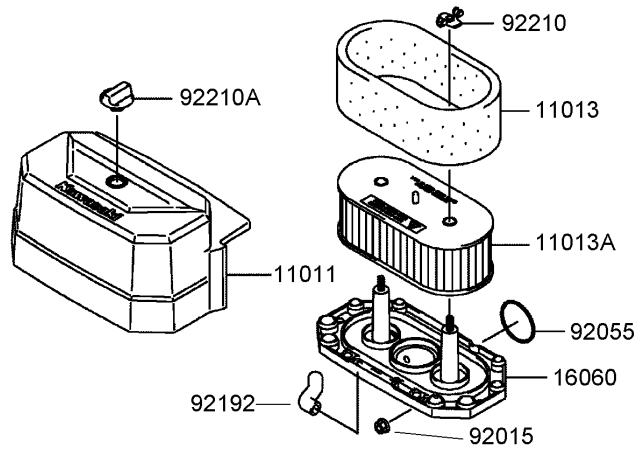
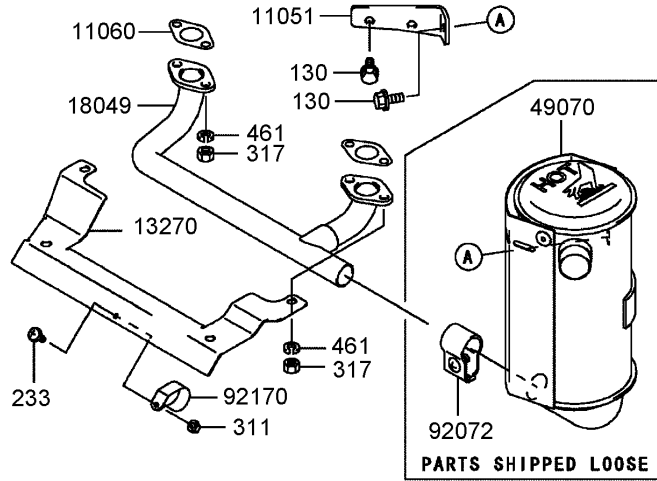


Carburetor Assembly Kawasaki FH541V-AS30

Ref	Part No.	Qty.	Description
⑤11061	11061-7004	2	Gasket-Insulator
⑤11061A	11061-7009	1	Gasket-Chamber
⑤11061B	11061-7010	1	Gasket-Screw
⑤11061C	11061-7018	1	Gasket-Air Cleaner
⑤11061D	11061-7019	2	Gasket
⑤13107	13107-7018	1	Shaft
⑤15003	15003-7107	1	Carburetor ASM
⑤16014	16014-7007	1	Screw-Pilot, Air
⑤16020	16020-7003	1	Chamber-Float
⑤16025	16025-7006	1	Valve-Throttle
⑤16030	16030-7003	1	Valve-Float
⑤16031	16031-7002	1	Float
⑤16041	16041-7016	1	Shaft-Carburetor, Choke
⑤16041A	16041-7018	1	Shaft-Carburetor, Throttle
⑤16073	16073-7007	1	Insulator
⑤16186	16186-7004	1	Choke Valve ASM
⑤39076	39076-7001	1	Limiter
⑤49121	49121-7010	1	Nozzle-Main
⑤59076	59076-7001	1	Manifold-Intake
⑤92009	92009-2083	2	Screw
⑤92009A	92009-2349	1	Screw
⑤92063	92063-7065	1	Jet-Main, #112
⑤92081	92081-2234	1	Spring
⑤92093	92093-2100	1	Seal

Ref	Part No.	Qty.	Description
⑤92093A	92093-7003	1	Seal
⑤92145	92145-7015	1	Spring
⑤92172	92172-7002	1	Screw
⑤130	130B0635	4	Bolt-Flanged
⑤172	172G0690	2	Bolt-Stud

PROTOTYPE

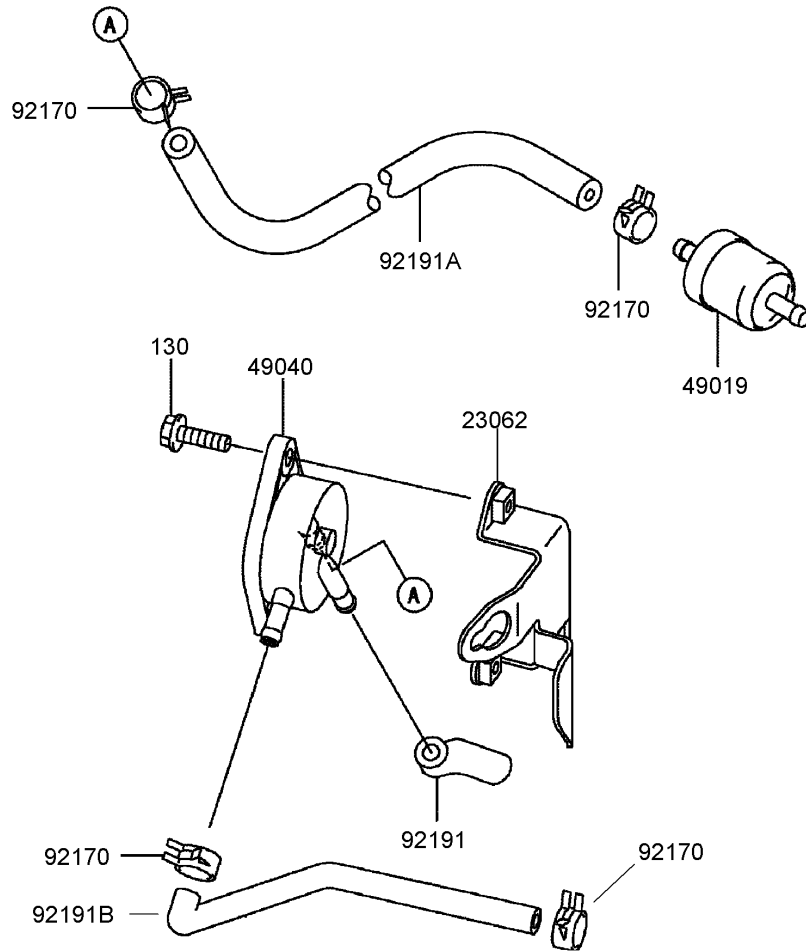


Muffler and Air Filter Assembly Kawasaki FH541V-AS30

Ref	Part No.	Qty.	Description
⑤11011	11011-7036	1	Case-Filter, Air
⑤11013	11013-7025	1	Element-Filter, Air
⑤11013A	11013-7031	1	Element-Filter, Air
⑤11051	11051-7005-9H	1	Bracket
⑤11060	11060-7021	2	Gasket-Muffler
⑤13270	13270-7008	1	Plate
⑤16060	16060-7016	1	Pipe-Intake
⑤18049	18049-7001	1	Pipe-Exhaust
⑤49070	49070-7015	1	Muffler-Comp
⑤92015	92015-1193	2	Nut
⑤92055	92055-7015	1	O-Ring
⑤92072	92072-7008	1	Band
⑤92170	92170-7002	1	Clamp
⑤92192	92192-7010	1	Tube
⑤92210	92210-7004	2	Nut
⑤92210A	92210-7019	1	Nut
⑤130	130B0816	2	Bolt-Flanged
⑤233	233B0416	1	Screw-Pan-Wp+-
⑤311	311B0400	1	Nut-Hex
⑤317	317R0800	4	Nut-Hex-Small
⑤461	461F0800	4	Washer-Spring

--	--	--	--

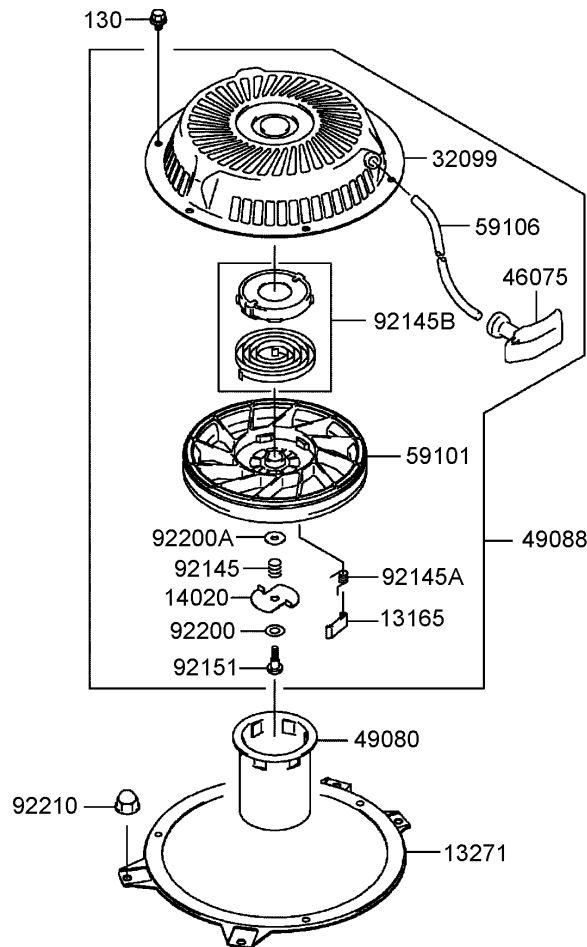
PROTOTYPE



Fuel Tank/Fuel Valve Assembly Kawasaki FH541V-AS30

Ref	Part No.	Qty.	Description				
⑤ 23062	23062-7004-9H	1	Bracket-Comp				
⑤ 49019	49019-7001	1	Filter-Fuel				
⑤ 49040	49040-7001	1	Pump-Fuel				
⑤ 92170	92170-2088	4	Clamp				
⑤ 92191	92191-7002	1	Tube				
⑤ 92191A	92191-7003	1	Tube-6.35x12.7x160				
⑤ 92191B	92191-7004	1	Tube				
⑤ 130	130B0620	2	Bolt-Flanged				

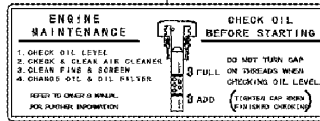
PROTOTYPE



Starter Assembly Kawasaki FH541V-AS30

Ref	Part No.	Qty.	Description				
③ 13165	13165-7001	2	Pawl-Starter, Recoil				
③ 13271	13271-7003-9H	1	Plate				
③ 14020	14020-7001	1	Retainer				
③ 32099	32099-7002	1	Case-Starter, Recoil				
③ 46075	46075-7001	1	Grip-Recoil, Starter				
③ 49080	49080-7001	1	Pulley-Starting				
③ 49088	49088-7013	1	Starter-Recoil				
③ 59101	59101-7001	1	Reel-Recoil				
③ 59106	59106-7001	1	Rope				
③ 92145	92145-7006	1	Spring				
③ 92145A	92145-7007	2	Spring				
③ 92145B	92145-7008	1	Spring				
③ 92151	92151-7008	1	Bolt				
③ 92200	92200-7004	1	Washer				
③ 92200A	92200-7005	1	Washer				
③ 92210	92210-0003	4	Nut				
③ 130	130B0608	3	Bolt-Flanged				

56033



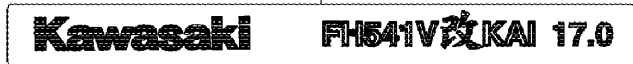
56070



56080



56080A



Decal Assembly Kawasaki FH541V-AS30

Ref	Part No.	Qty.	Description
56033	56033-7002	1	Label-Manual
56070	56070-7001	1	Label-Warning
56080	56080-2077	1	Label-Brand
56080A	56080-7023	1	Label-Brand

PROTOTYPE



PROTOTYPE