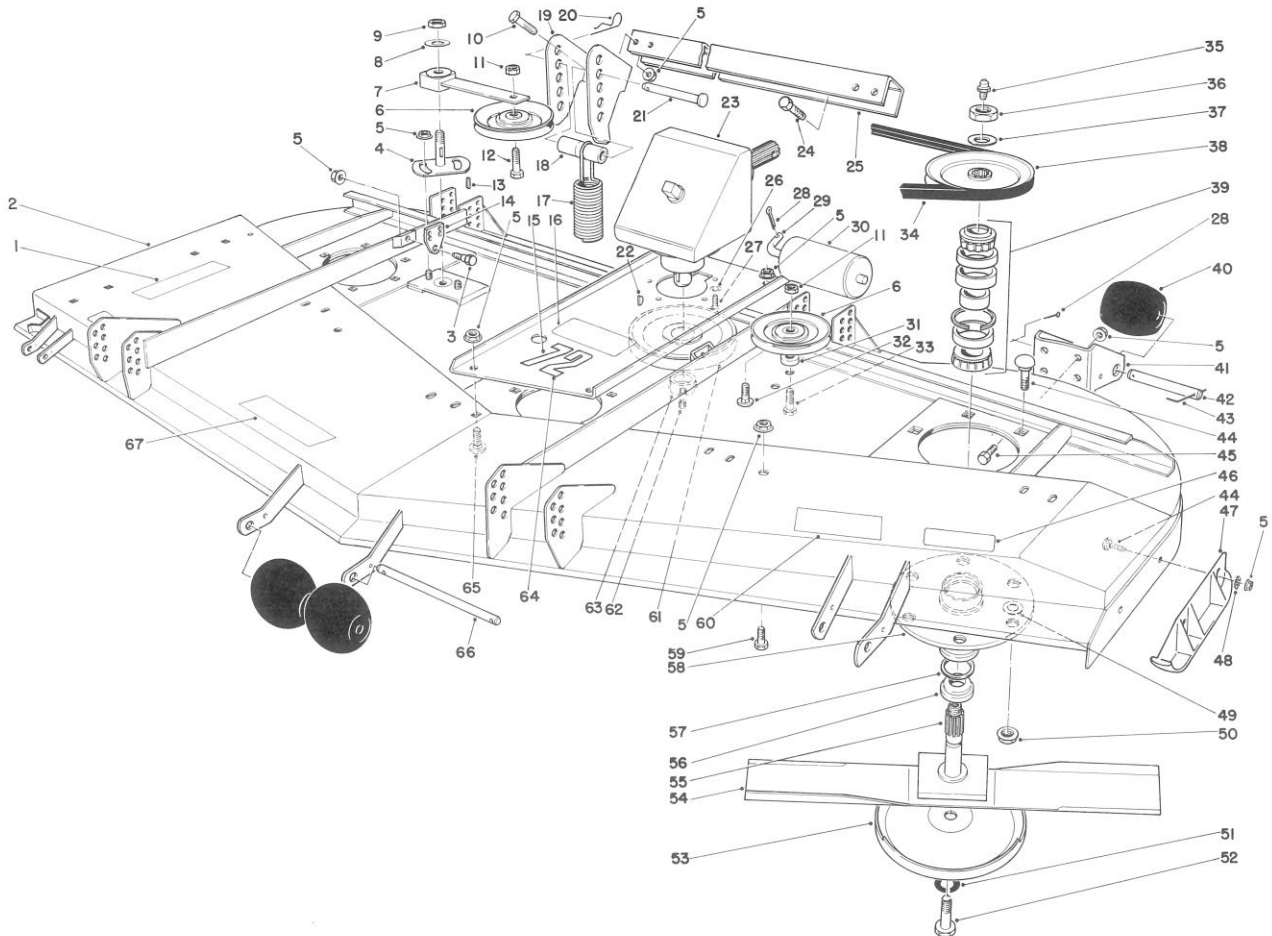




MODEL NO. 30575-60001 &amp; UP

# **PARTS CATALOG**

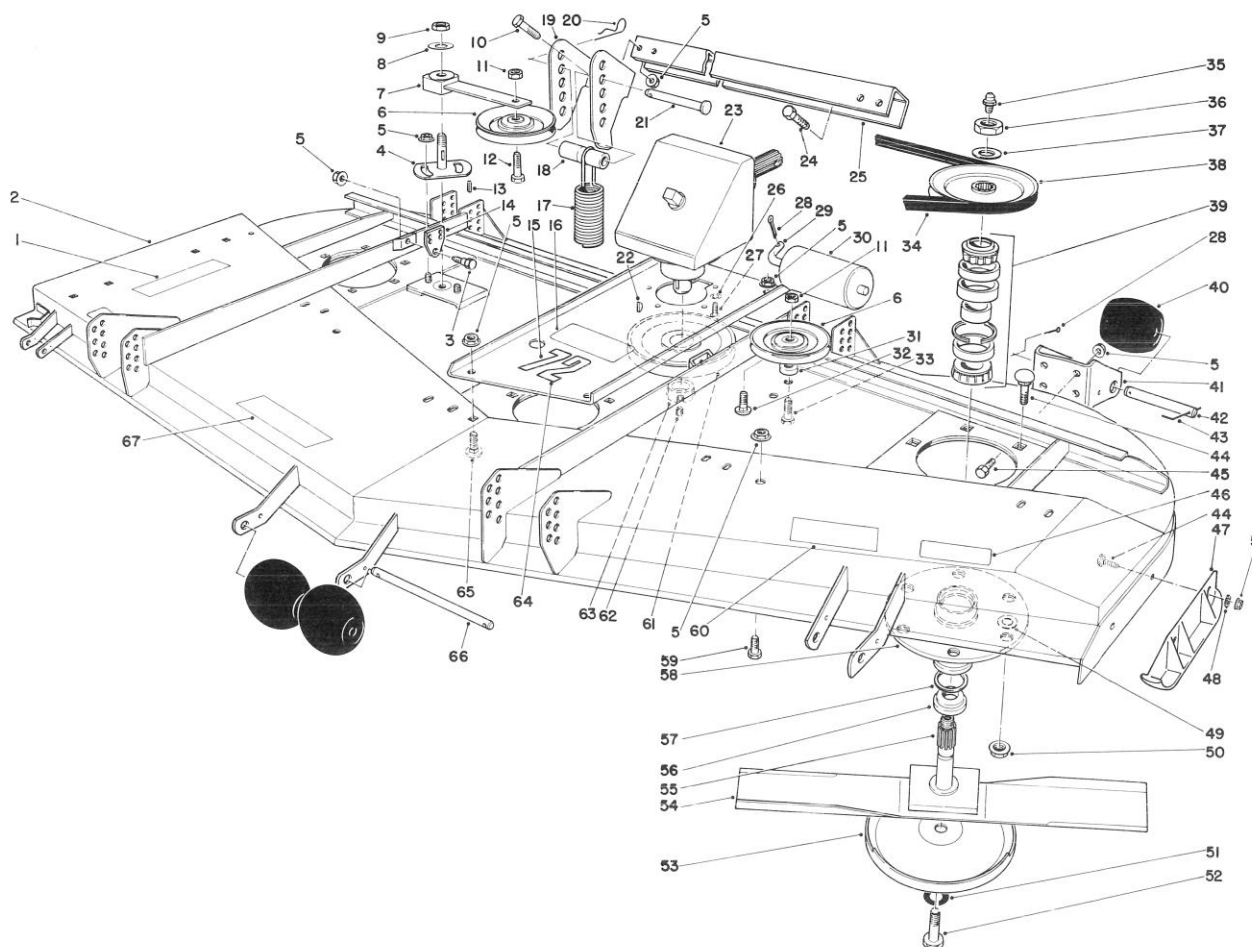
## **72" SIDE DISCHARGE CUTTING UNIT**



## **CUTTER DECK ASSEMBLY**

Ref. No.	Part No.	Description	No. Used
1	26-7980	Decal — Caution	1
2	57-0300	Housing	1
3	46-3380	Bolt — Shoulder	2
4	44-6300	Idler Plate	1
5	3290-357	Nut — Lock	22
6	52-4580	Pulley — Idler	2
7	27-8580	Idler Socket & Bushing Assembly	1
8	3256-27	Washer	1
9	3296-33	Nut — Lock	1
10	323-6	Screw — Cap Hex Hd.	4
11	3296-5	Nut — Lock	2
12	3211-8	Screw — Cap Hex Hd.	1
13	5-1077	Key Square	1
14	46-3190	End Spring	2
15	57-0540	Base — Gear Box	1

Ref. No.	Part No.	Description	No. Used
16	44-6470	Decal — Caution	1
17	46-3200	Spring — Extension	2
18	40-0300	Spacer	2
19	46-2620	Bracket — Spring	2
20	3290-355	Hair Pin Cotter	2
21	283-55	Clevis Pin	2
22	3257-5	Key — Woodruff	1
23	8-0909	Gear Box	1
24	323-11	Screw — Cap Hex Hd.	2
25	57-0550	Adapter — Spring Bracket	1
26	3253-21	Washer — Lock	5
27	3274-1	Screw — Cap Socket Hd.	5
28	3272-11	Pin — Cotter	7
29	40-0340	Shaft — Rear Roller	2

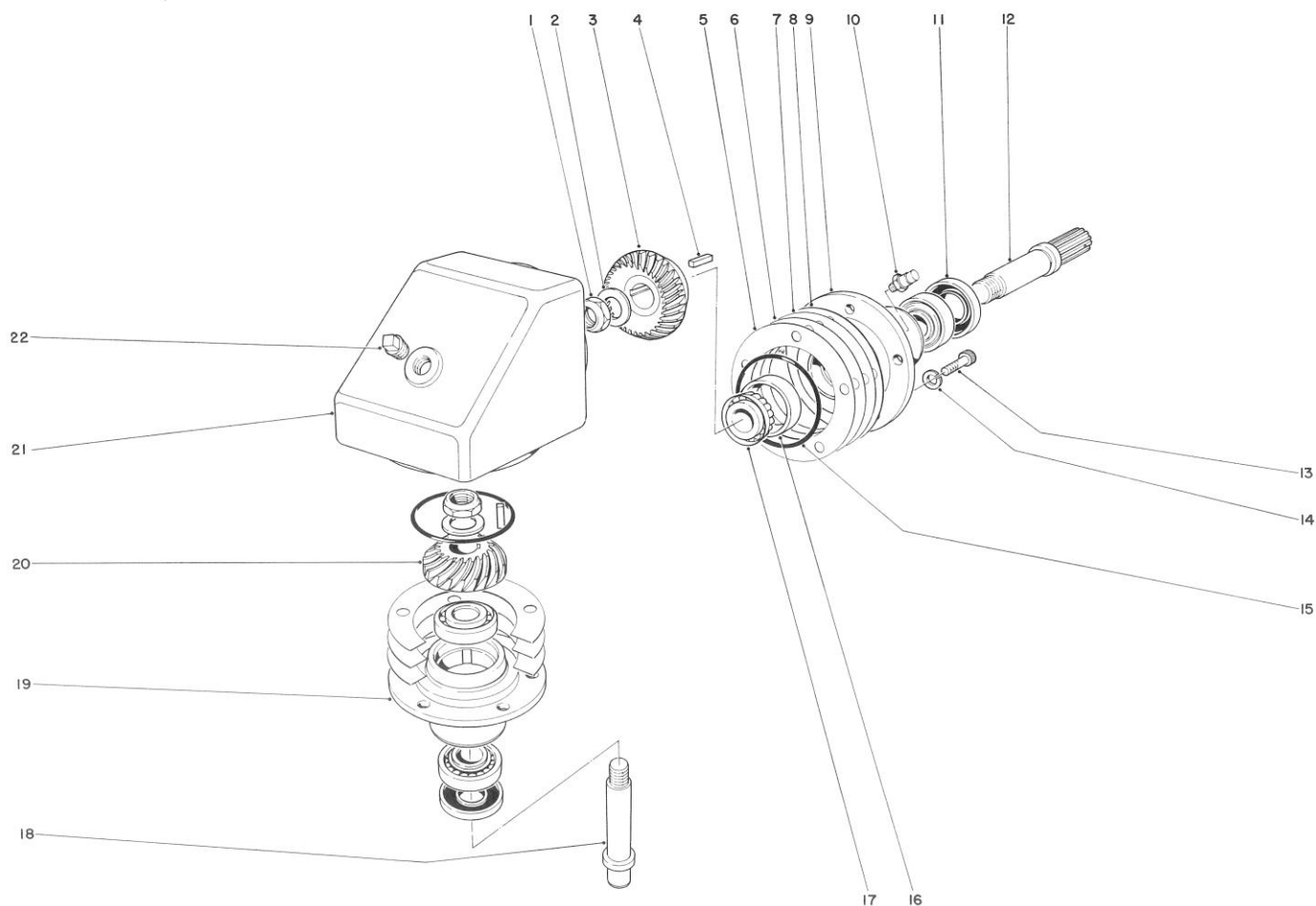


## CUTTER DECK ASSEMBLY (CONTINUED)

Ref. No.	Part No.	Description	No. Used
30	36-1740	Roller — Deck	2
31	44-6390	Spacer	1
32	3231-27	Bolt — Carriage	2
33	3211-9	Screw — Cap Hex Hd.	1
34	57-0240	V-Belt	1
35	302-2	Fitting Grease	3
36	32146-20	Nut — Hex Jam	3
37	7-4150	Washer	3
38	57-0560	Pulley	3
39	46-8530	Bearing Assembly	3
40	29-4820	Roller	6
41	57-0580	Bracket — Roller	
		Left Rear	1
*	57-0590	Bracket Roller	
		Right Rear	1
42	57-0680	Roller Shaft	4
43	57-0690	Cotter Pin — Special	5
44	3231-22	Bolt — Carriage	20
45	323-7	Screw — Cap Hex Hd.	4
46	26-7970	Decal — Caution	2
47	57-0570	Skid	1
48	3290-224	Washer — Lock	2

Ref. No.	Part No.	Description	No. Used
49	3256-24	Washer	A/R
50	32128-21	Nut — Lock Flange	18
51	3253-27	Washer — Lock	3
52	44-2200	Capscrew Blade	3
53	27-1000	Anti — Scalp Cup	3
54	57-0250	Blade	3
55	27-0920	Spindle Shaft	3
56	27-0950	Spacer — Spindle	
		Bearing	3
57	253-139	Seal — Wave	6
58	27-0880	Spindle Housing	3
59	323-4	Screw — Cap Hex Hd.	2
60	57-0770	Decal — Rear Weight	1
61	27-6110	Pulley — Gear Box	1
62	3245-9	Screw — Set	
		Socket Hd.	2
63	27-6140	Bushing Taper Lock	1
64	57-0280	Decal — 72	1
65	3231-21	Bolt — Carriage	2
66	40-6400	Shaft — Roller	1
67	57-0270	Decal — Caution	1

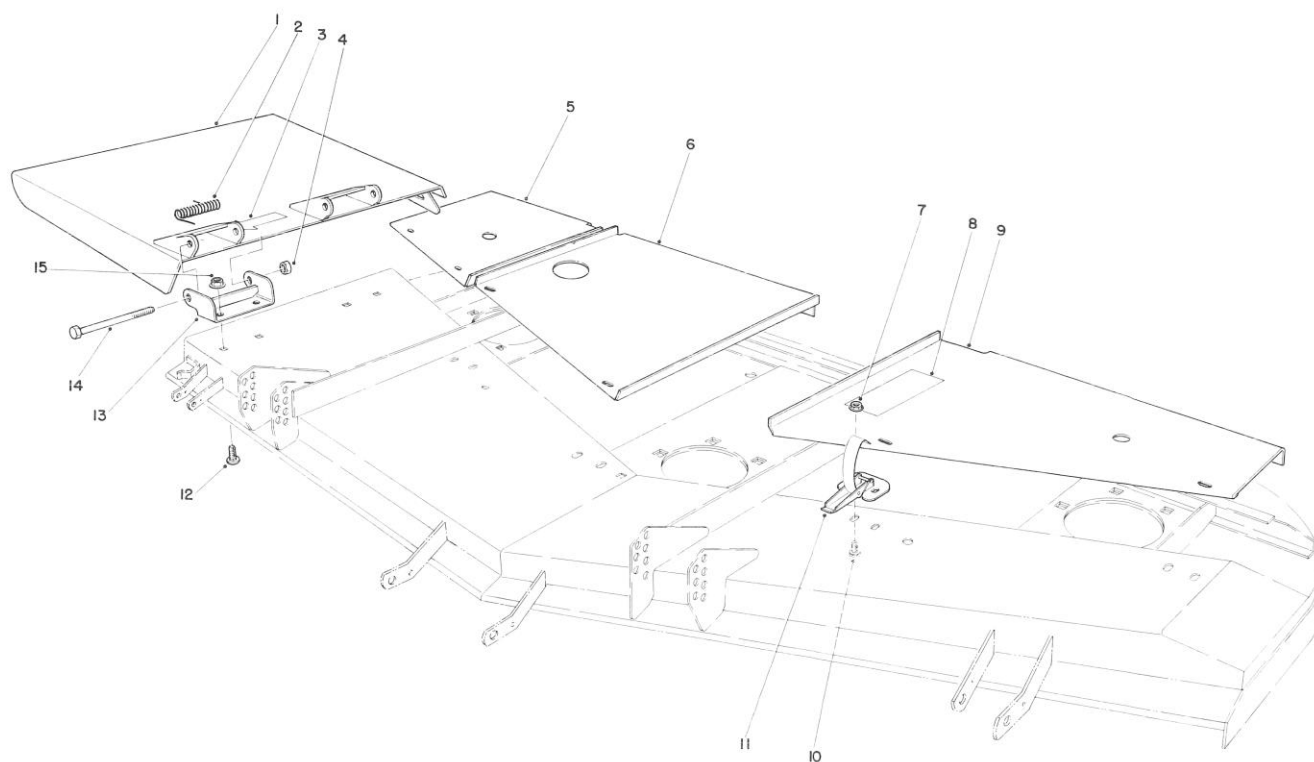
\*Not Illustrated



## GEAR BOX ASSEMBLY

Ref. No.	Part No.	Description	No. Used
1	3296-15	Nut	2
2	3-6514	Thrust Washer	2
3	26-1340	Gear — Spiral Bevel	1
4	18-6430	Square Key	2
5	26-1350	Shim .002 Thick Red	A/R
6	26-1360	Shim .005 Thick Blue	A/R
7	26-1370	Shim .015 Thick Pink	A/R
8	33-2040	Shim .020 Thick Yellow	A/R
9	26-1290	Bearing Housing — Input	1
10	302-14	Vent Plug	1
11	253-137	Oil Seal	2

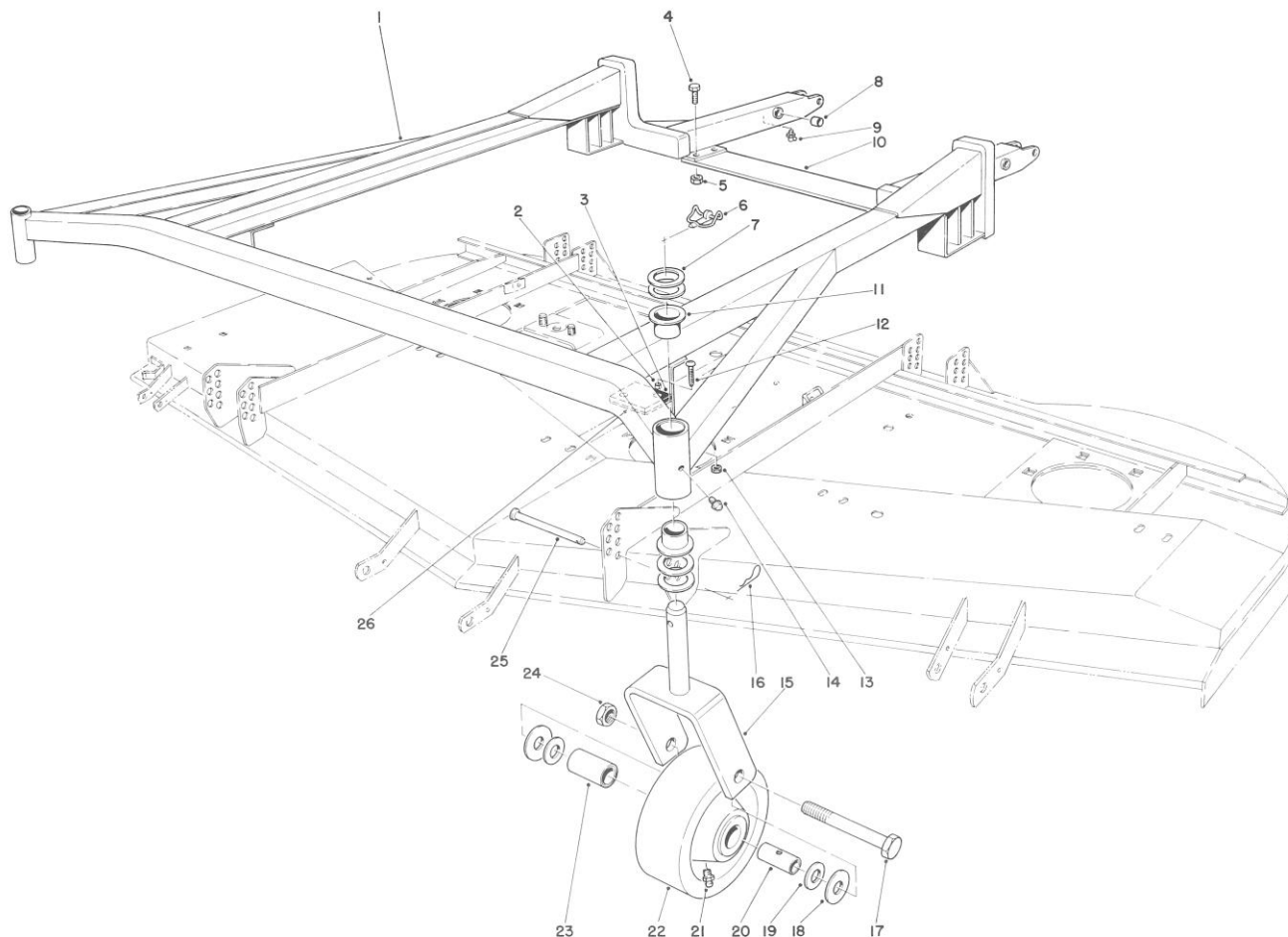
Ref. No.	Part No.	Description	No. Used
12	26-1310	Shaft — Input	1
13	3274-7	Capscrew Socket Head	5
14	3253-21	Lockwasher	5
15	237-97	O-Ring	2
16	254-90	Bearing Cup	4
17	254-91	Bearing Cone	4
18	26-1320	Shaft — Output	1
19	26-1380	Bearing Housing — Output	1
20	26-1330	Pinion Spiral	1
21	26-1270	Gear Box	1
22	281-11	Pipe Plug Sq. Hd.	1



## DEFLECTOR & COVER ASSEMBLY

Ref. No.	Part No.	Description	No. Used
1	52-5790	Deflector	1
2	51-1550	Spring	2
3	26-7120	Decal — Blade Line	1
4	32153-5	Nut — Lock	2
5	57-0230	Cover R.H.	1
6	57-0210	Cover — Center	1
7	32128-17	Nut — Lock	12
8	42-6860	Decal — Height of Cut	1

Ref. No.	Part No.	Description	No. Used
9	57-0220	Cover L.H.	1
10	3290-321	Screw — Machine Hex Slotted	12
11	249-21	Latch — Draw	6
12	3231-27	Bolt — Carriage	4
13	51-1530	Hinge Bracket	2
14	325-17	Screw — Cap Hex Hd.	2
15	3290-357	Nut — Lock, Hex Flange	4

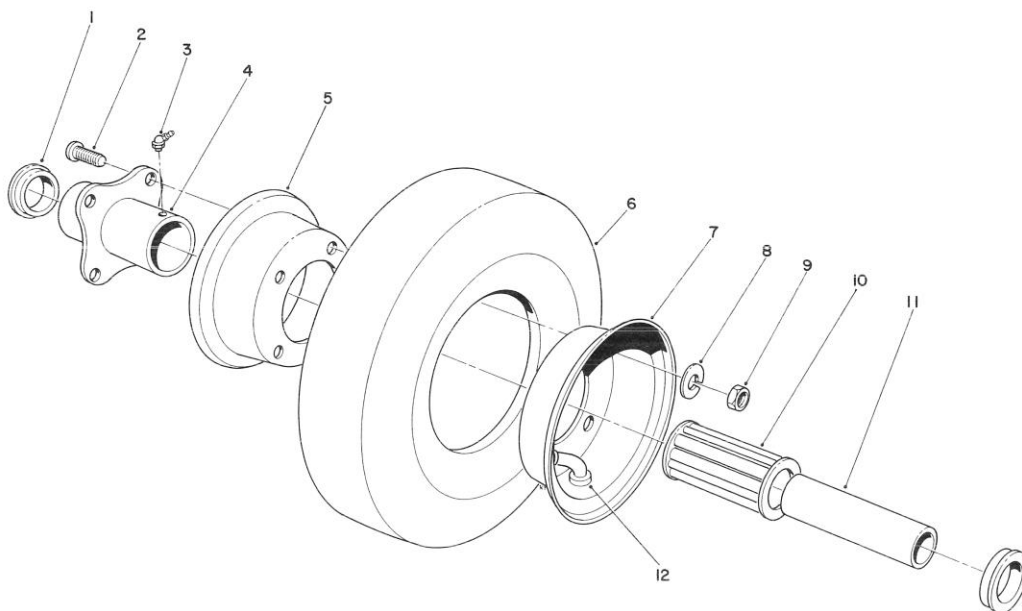


## SUSPENSION FRAME ASSEMBLY

Ref. No.	Part No.	Description	No. Used
1	57-0600	Suspension Frame (Incl. Ref. #4-5, 8-10 & 11)	1
2	40-9520	Spacer — Split	4
3	40-0330	Cushion — Rubber	2
4	323-6	Screw — Cap Hex Hd.	4
5	32153-2	Nut — Lock	4
6	3290-384	Lynch Pin	2
7	3-6781	Washer — Thrust	8
8	256-101	Bushing	2
9	302-40	Fitting — Grease	2
10	57-0780	Plate — Lift Arm	2
11	28-9290	Bushing — Special	4
12	32122-28	Screw — Machine Truss Hd.	4
13	3296-2	Nut — Lock	4

Ref. No.	Part No.	Description	No. Used
14	302-5	Grease Fitting	2
15	40-0370	Castor Fork	2
16	3290-355	Pin — Hair	4
17	328-9	Screw — Cap Hex Hd.	2
18	27-1170	Thrust Washer	4
19	27-1180	Bearing — Retainer	4
20	27-1200	Spanner Bushing	2
21	302-55	Grease Fitting	2
22*	27-1050	Castor Wheel Assembly (Incl. Ref. #18-21 & 23)	2
23	27-1210	Roller Bearing	2
24	32153-6	Nut — Lock	2
25	283-55	Pin — Clevis	4
26	42-6200	Shim — Cushion	A/R

\*See page 6 for pneumatic caster wheel assembly.

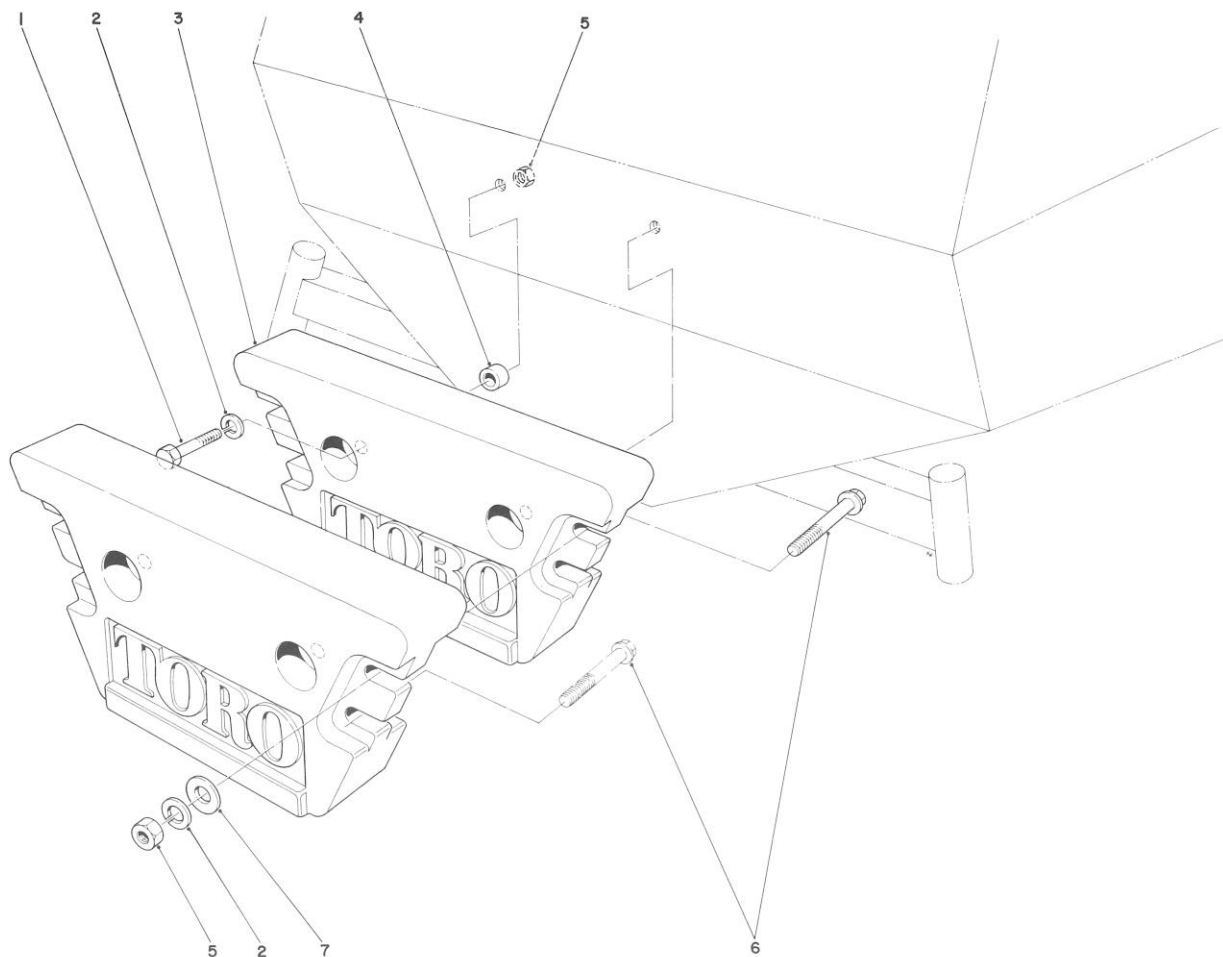


## PNEUMATIC CASTER WHEEL ASSEMBLY (Optional)

Ref. No.	Part No.	Description	No. Used
1	54-8840	Retainer	2
2	54-8890	Bolt — Wheel	4
3	302-10	Fitting Grease	1
4	54-8830	Hub — Centered	1
5	54-8910	Wheel Half — Female	1
6	54-8870	Tire	1
7	54-8900	Wheel Half — Male	1
8	3253-4	Washer — Lock	4

Ref. No.	Part No.	Description	No. Used
9	3217-6	Nut — Hex	4
10	54-8850	Bearing — Roller Open Cage	1
11	54-8860	Bushing — Spanner	1
12	54-8880	Tube w/Valve	1
*	54-8820	Caster Assembly (Complete)	2

\*Not Illustrated



## REAR WEIGHT KIT NO. 24-5780 (Optional)

Ref. No.	Part No.	Description	No. Used
1	325-6	Capscrew	2
2	3253-7	Lockwasher	6
3	24-5790	Rear Weight	2
4	57-4230	Spacer	2

Ref. No.	Part No.	Description	No. Used
5	3217-9	Nut	6
6	325-14	Capscrew	4
7	3256-26	Flatwasher	8



# The Toro Promise

## A ONE YEAR LIMITED WARRANTY

*The Toro Company promises to repair your TORO Product if defective in materials or workmanship. The following time periods from the date of purchase apply:*

### Commercial Products ..... 1 Year

*The costs of parts and labor are included, but the customer pays the transportation costs on walk rotary mowers with cutting unit widths of less than 25".*

If you feel your TORO product is defective and wish to rely on The Toro Promise, the following procedure is recommended.

1. Contact your Authorized TORO Distributor or Commercial Dealer (the Yellow Pages of your telephone directory is a good reference source).
2. The TORO Distributor or Commercial Dealer will advise on the arrangements that can be made to inspect and repair your product.
3. The TORO Distributor or Commercial Dealer will inspect the product and advise you whether the product is defective and, if so, make all repairs necessary to correct the defect without an extra charge to you.

If for any reason you are dissatisfied with the distributor's analysis of the defect or the service performed, you may contact us.

Write:

TORO Commercial Products Service Department  
8111 Lyndale Avenue South  
Minneapolis, Minnesota 55420

The above remedy of product defects through repair by an Authorized TORO Distributor or Commercial Dealer is the purchaser's sole remedy for any defect.

THERE IS NO OTHER EXPRESS WARRANTY. ALL IMPLIED WARRANTIES OF MERCHANTABILITY AND FITNESS FOR USE ARE LIMITED TO THE DURATION OF THE EXPRESS WARRANTY.

Some states do not allow limitations on how long an implied warranty lasts, so the above limitation may not apply to you.

This Warranty applies only to parts or components which are defective and does not cover repairs necessary due to normal wear, misuse, accidents, or lack of proper maintenance. Regular, routine maintenance of the unit to keep it in proper condition is the responsibility of the owner.

All warranty repairs reimbursable under The Toro Promise must be performed by an Authorized TORO Commercial Dealer or Distributor using Toro approved replacement parts.

Repairs or attempted repairs by anyone other than an Authorized TORO Distributor or Commercial Dealer are not reimbursable under The Toro Promise. In addition, these unauthorized repair attempts may result in additional malfunctions, the correction of which is not covered by warranty.

THE TORO COMPANY IS NOT LIABLE FOR INDIRECT, INCIDENTAL OR CONSEQUENTIAL DAMAGES IN CONNECTION WITH THE USE OF THE PRODUCT INCLUDING ANY COST OR EXPENSE OF PROVIDING SUBSTITUTE EQUIPMENT OR SERVICE DURING PERIODS OF MALFUNCTION OR NON-USE.

Some states do not allow the exclusion or limitation of incidental or consequential damages, so the above limitation or exclusion may not apply to you.

This warranty gives you specific legal rights, and you may also have other rights which vary from state to state.

### COUNTRIES OTHER THAN THE UNITED STATES OR CANADA

Customers who have purchased TORO products exported from the United States or Canada should contact their TORO Distributor (Dealer) to obtain guarantee policies for your country, province or state. If for any

reason you are dissatisfied with your Distributor's service or have difficulty obtaining guarantee information, contact the TORO importer. If all other remedies fail, you may contact us at The Toro Company.