



# Clutched Pulley Replacement Kit

## Model 04110 and 04125 Groomers

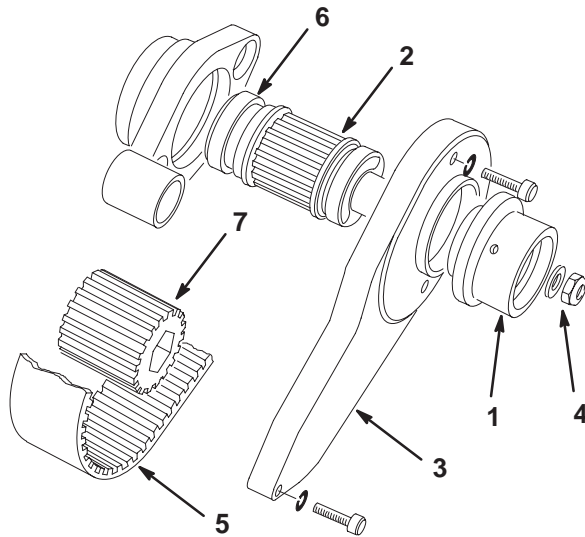
Part No. 107-8199

Form No. 3351-931

### Operator's Manual

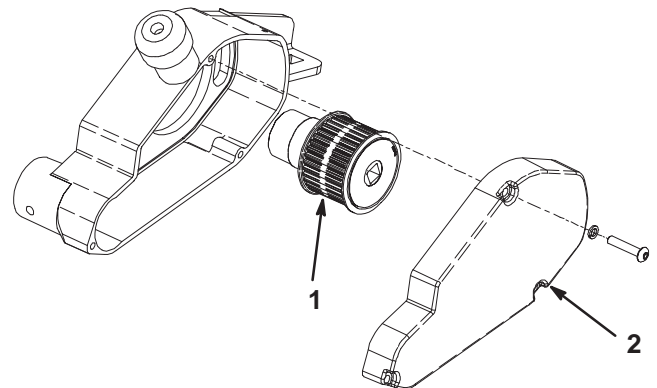
**Note:** Discard all the removed components, unless otherwise specified.

1. Remove the two Allen head set screws securing the clutch engagement knob to the clutch assembly (Fig. 1). Remove the knob.
2. Remove the (3) socket head screws securing the housing cover to the housing (Fig. 1). Remove the cover.
3. Remove the locknut and washer securing the clutch assembly to the clutch adapter (Fig. 1). Secure the reel from turning with a piece of wood.
4. Remove the drive belt from the idler pulley, drive pulley and driven pulley. Retain the belt.
5. Slide the clutch assembly off the clutch adapter (Fig. 1).
6. Unthread the clutch adapter from the reel shaft (Fig. 1). Secure the reel from turning with a piece of wood.
8. Install the drive belt around the drive pulley and driven pulley and under the backside idler.
9. Check the tension on the drive belt by depressing it at the midpoint between the drive pulley and the driven pulley (Fig. 2). A force of 5 to 10 lbs. should be required to depress the midpoint of the belt 1/4 inch. To adjust tension, loosen the backside idler pulley pivot allen head bolt, pivot the idler to achieve the proper tension, and torque the allen head bolt to 7 to 10 ft-lbs.
10. Install the cover to the housing, with (3) socket head screws and lockwashers (Fig. 2).



**Figure 1**

- |                           |                   |
|---------------------------|-------------------|
| 1. Clutch engagement knob | 5. Drive belt     |
| 2. Clutch assembly        | 6. Clutch adapter |
| 3. Housing cover          | 7. Driven pulley  |
| 4. Locknut & washer       |                   |



**Figure 2**

- |                 |                  |
|-----------------|------------------|
| 1. Drive pulley | 2. Housing cover |
|-----------------|------------------|

7. Using a 1/2" drive ratchet and extension, install the drive pulley onto the reel shaft (Fig. 2). Secure the reel from turning with a wood block and torque the pulley to a minimum of 17 ft-lb.