



## 44in SFS Side Discharge Mower ProLine Mid-Size Traction Unit

Model No. 30149 - 240000001 and up.

### Parts Catalog

---

#### Ordering Replacement Parts

To order replacement parts, please supply the part number, the quantity, and the description of each part desired.

#### Understanding Reference Numbers

Each Identified part in an illustration has a reference number. The reference number for a part also appears in the parts list, along with other information about the part.

This catalog uses two special reference number formats, one to indicate parts in a service assembly and another to indicate the quantity of a given part in an illustration.

#### Service Assembly Reference Numbers

Parts in service assemblies have reference numbers in the form a:b. The a represents the reference number of the entire service assembly and the b represents a sequential number unique to each part within the service assembly.

For example, a wheel assembly might be identified by reference number 6, the tire by 6:1, the valve by 6:2, and the wheel by 6:3. When you order the assembly identified by reference number 6, you receive all parts identified by reference numbers 6:1, 6:2, and 6:3. However, you may also order any part individually. Reference numbers of this type appear in illustrations and in part lists.

#### Reference Numbers Indicating Quantity

In an illustration, if a reference number indicates more than one part, the reference number has the form nX y. The n represents the quantity of the part, the X is the multiplication symbol, and the y represents the reference number.

For example, in an illustration, the reference number 2X 37 means that two of the parts identified by reference number 37 are indicated.

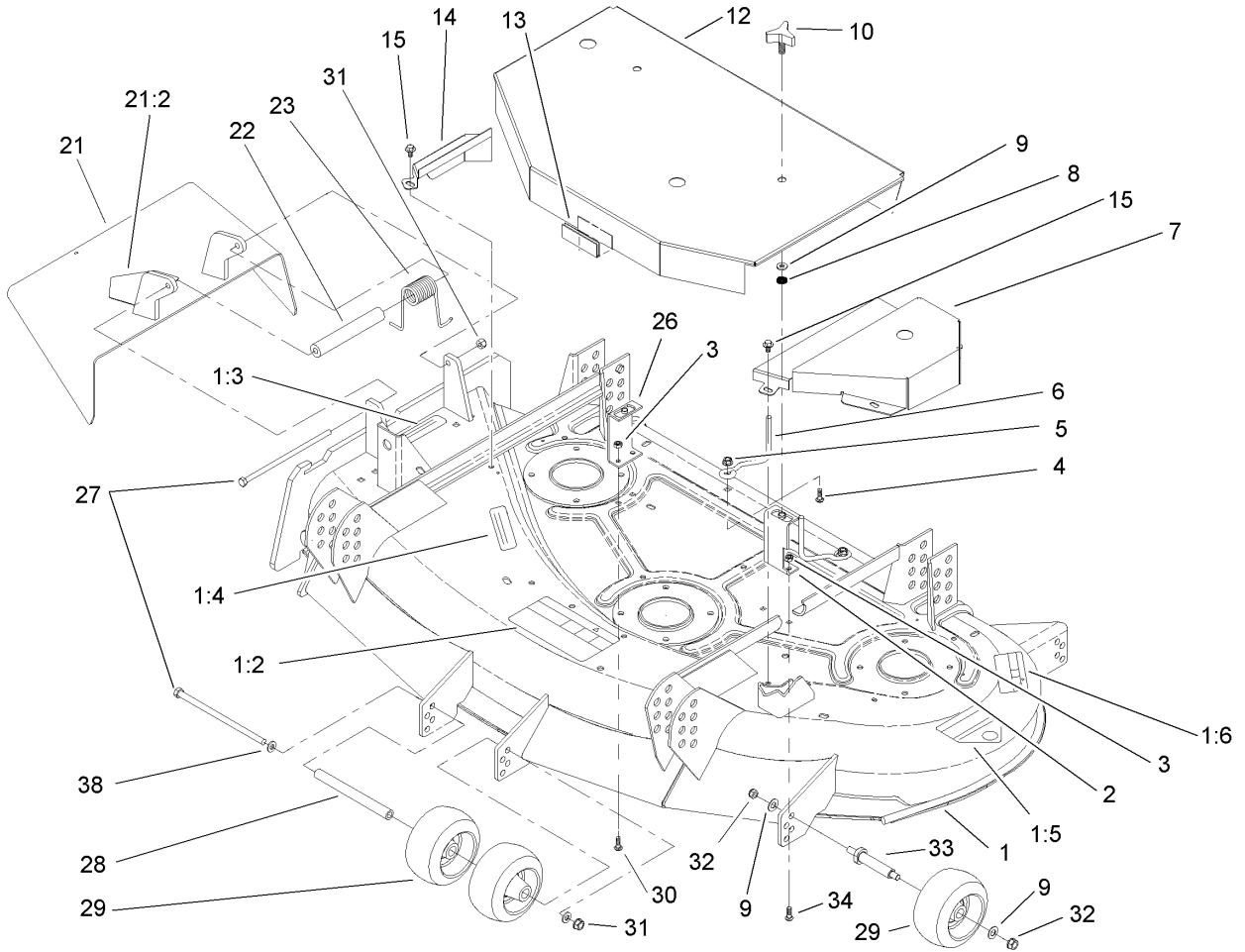
# Contents

Description	Page	Description	Page
Deck and Cover Assembly	..... 3	Carrier Frame Assembly	..... 7
Spindle and Idler Assembly	..... 4	Belt and Decal Assembly	..... 8
Spindle Housing Assembly No. 67-7600	..... 5		
Spindle Housing Assembly No. 67-7660	..... 6		

## Part Description Abbreviations

Part descriptions in this catalog may include the following abbreviations.

AR. .... as required	INC. .... incorporated
ASM. .... assembly	LH. .... left hand
CARR. .... carriage	NI. .... nylon insert
DEG. .... degrees	PPH. .... phillips pan head
FH. .... flat head	PTH. .... phillips truss head
GA. .... gauge	PTO. .... power take off
HF. .... hex flange	RH. .... right hand
HH. .... hex head	SFH. .... slotted fillister head
HHF. .... hex head flange	SHH. .... slotted hex head
HHFTF. .... hex head flange thread forming	SHWH. .... slotted hex washer head
HJ. .... hex jam	SPH. .... slotted pan head
HLH. .... hex lag head	SQH. .... square head
HOC. .... height-of-cut	SRH. .... slotted round head
HS. .... hex	STD. .... standard
HSBH. .... hex socket button head	TAP. .... self tapping
HSFH. .... hex socket flat head	TTH. .... torx truss head
HSH. .... hex socket head	WH. .... wing head
HWH. .... hex washer head	
HWHTF. .... hex washer head thread forming	
HYD. .... hydraulic	

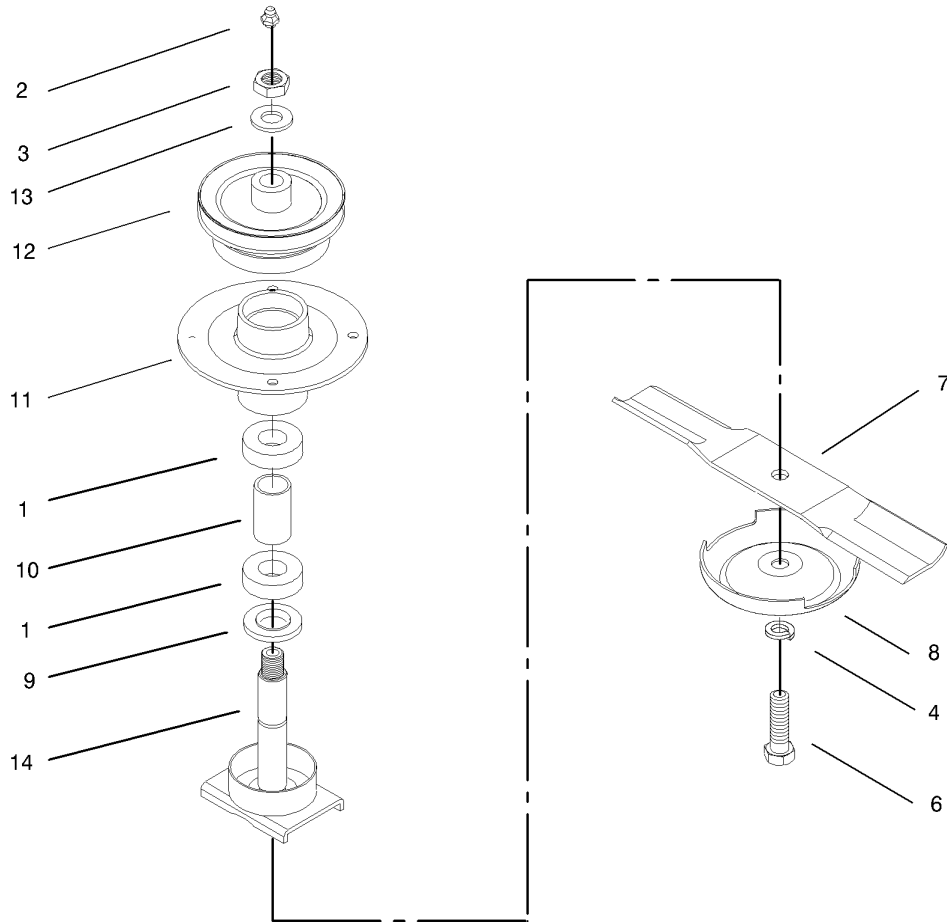


## Deck and Cover Assembly

Ref	Part No.	Qty.	Description
1	106-0747	1	44in Deck W/ Decals
1:2	66-1340	1	Decal-Danger
1:3	66-6380	1	Decal-Danger
1:4	67-5360	1	Decal-Danger
1:5	43-8480	1	Decal-Danger
1:6	68-8340	1	Decal-Torque
2	54-3240-03	1	LH Cover Bracket ASM
3	3296-42	4	Nut-Lock, NI
4	3230-2	2	Bolt-CARR
5	32128-13	2	Nut-HF
6	52-4780	2	Rod-Belt
7	54-2220-01	1	Cover-Deck, LH
8	32151-72	2	Ring-Retaining
9	3256-24	6	Washer-Flat
10	62-6520	2	Knob
12	54-3190-01	1	Cover-Center
13	29-0641	5	Trim-Jiffy
14	54-2250-01	1	Cover-Deck, RH
15	9266714	5	Screw-HWH
21	105-4625	1	Deflector ASM
21:2	93-1122	1	Decal-Danger
22	105-4622	1	Spacer
23	104-8554	1	Spring-Torsion
26	54-3230-03	1	RH Cover Bracket ASM

Ref	Part No.	Qty.	Description
27	322-50	2	Screw-HH
28	98-5967	1	Spacer-Wheel
29	68-2730	4	Wheel-Gage
30	3229-1	2	Screw-CARR
31	3296-29	2	Nut-Lock, NI
32	3296-39	4	Nut-Lock, NI
33	99-2842	2	Spacer
34	3229-3	2	Screw-CARR
38	3256-23	2	Washer-Flat

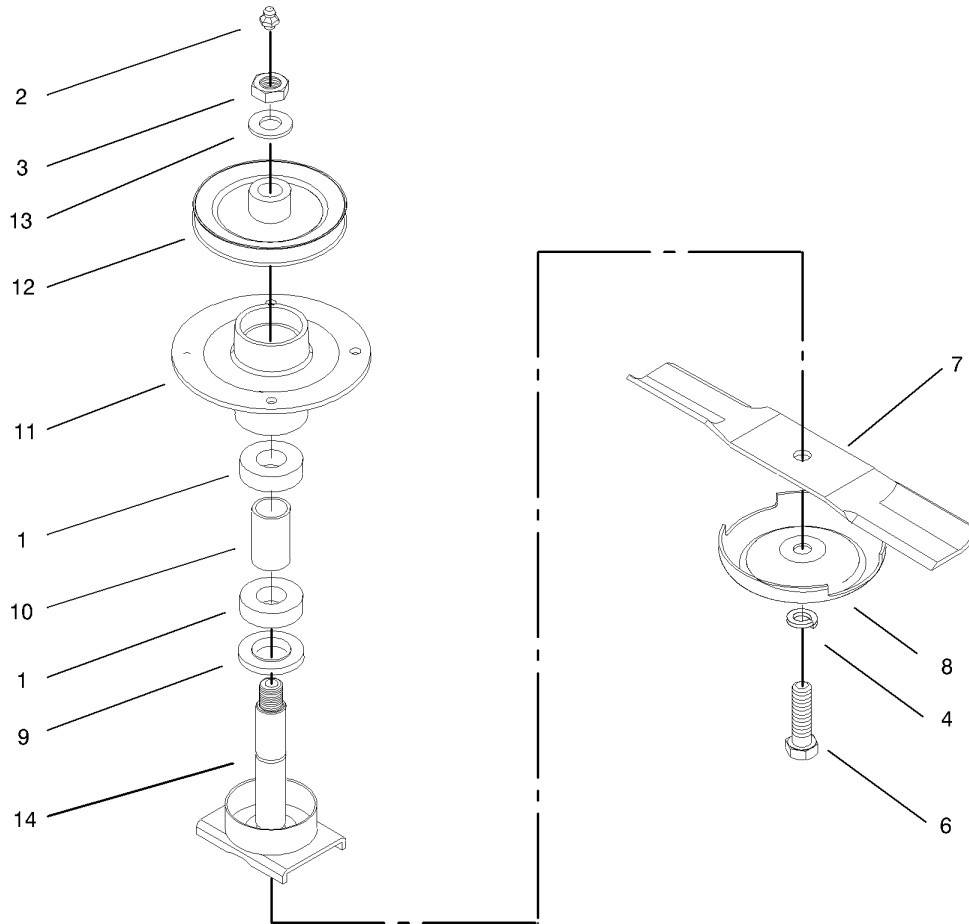




### Spindle Housing Assembly No. 67-7600

Ref	Part No.	Qty.	Description
1	251-257	2	Bearing-Ball
2	302-2	1	Fitting-Grease
3	32146-20	1	Nut-Jam
4	3253-8	1	Washer-Lock
6	51-4060	1	Screw-Blade
7	54-0010-03	1	Blade
8	67-7561	1	Cup-Scalp, Anti
9	67-7570	1	Spacer-Spindle
10	67-7580	1	Spacer-Bearing
11	67-7590	1	Housing-Spindle
12	67-7650	1	Pulley-Center
13	106-0776	1	Washer-Pinion
14	71-2790-03	1	Spindle ASM

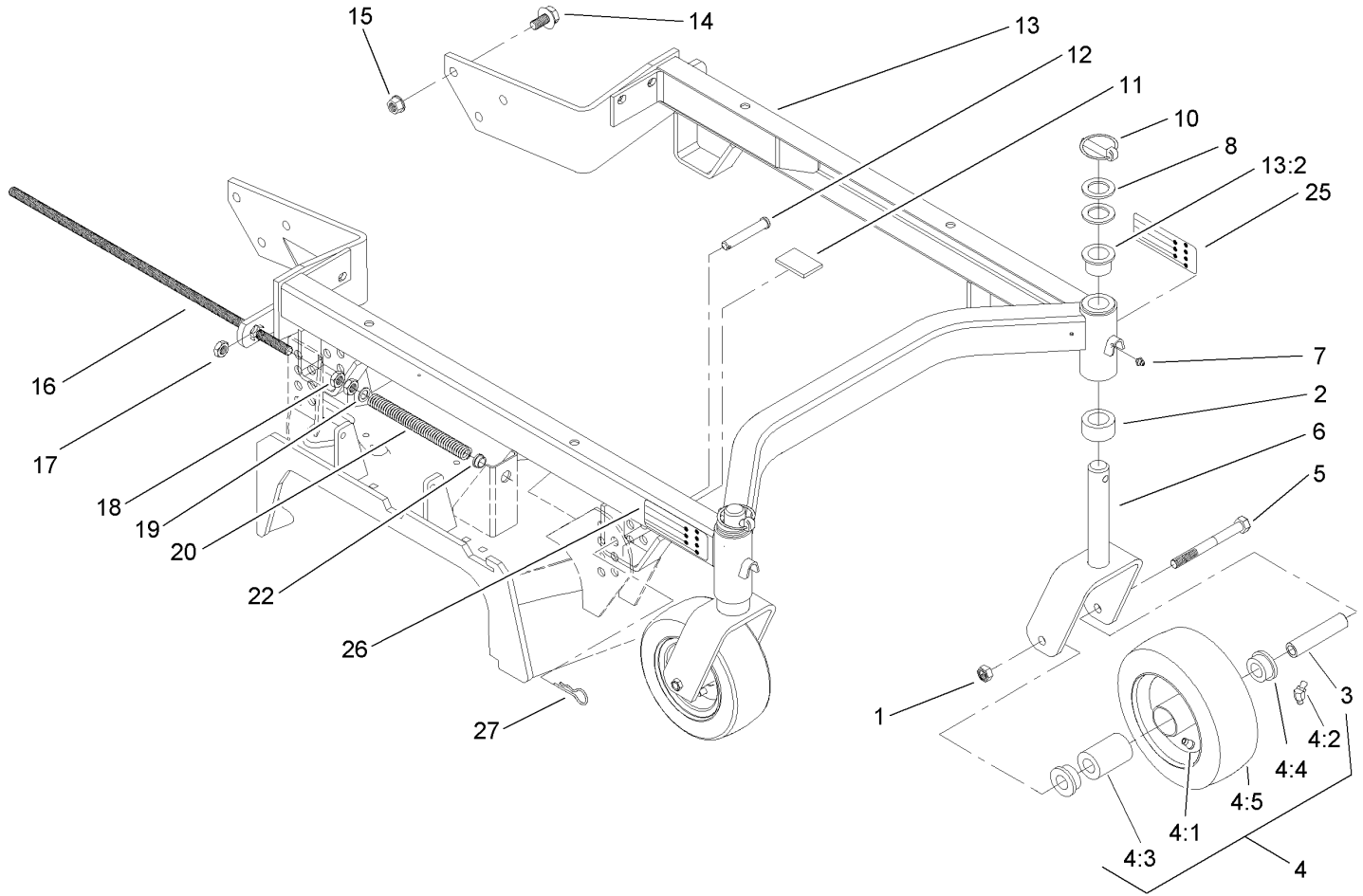
--	--	--	--



### Spindle Housing Assembly No. 67-7660

Ref	Part No.	Qty.	Description
1	251-257	2	Bearing-Ball
2	302-2	1	Fitting-Grease
3	32146-20	1	Nut-Jam
4	3253-8	1	Washer-Lock
6	51-4060	1	Screw-Blade
7	54-0010-03	1	Blade
8	67-7561	1	Cup-Scalp, Anti
9	67-7570	1	Spacer-Spindle
10	67-7580	1	Spacer-Bearing
11	67-7590	1	Housing-Spindle
12	67-7690	1	Pulley-Deck
13	106-0776	1	Washer-Pinion
14	71-2780-03	1	Spindle Shaft ASM

--	--	--	--



## Carrier Frame Assembly

Ref	Part No.	Qty.	Description
1	32153-5	2	Nut-Lock
2	93-1166	2	Spacer-Castor
3	100-6453	2	Bushing-Spanner
4	100-6451	2	Castor Wheel ASM
4:1	232-27	1	Stem-Valve
4:2	302-11	1	Fitting-Lube, 45 DEG
4:3	83-4740	1	Bearing
4:4	62-5580	2	Bearing-Outside
4:5	100-6452	1	Tire-Tubeless
5	325-19	2	Screw-HH
6	100-6455-01	2	Castor Fork ASM
7	302-5	2	Fitting-Grease
8	3-6781	8	Washer-Thrust
10	3290-384	2	Pin-Lynch
11	74-0340	4	Cushion-Rubber
12	283-55	4	Pin-Clevis
13	94-4175	1	44in Frame ASM
13:2	94-1291	4	Bushing
14	3234-6	6	Screw-HHF
15	32128-23	6	Nut-HF
16	74-0310	2	Shaft-Adjusting
17	3296-45	2	Nut-Lock, NI
18	3218-5	4	Nut-Jam
19	41-8440	2	Washer

Ref	Part No.	Qty.	Description
20	74-0290	2	Spring
22	256-156	2	Bushing-Flange
25	85-7450	1	Decal-Hoc, LH
26	85-7460	1	Decal-Hoc, RH
27	3290-355	4	Pin-Hair



## NOTES

## NOTES

## NOTES

