



Z555 Z Master[®]

With 60in TURBO FORCE Side Discharge Mower

Model No. 74245 - 250000001 and up.

Parts Catalog

Ordering Replacement Parts

To order replacement parts, please supply the part number, the quantity, and the description of each part desired.

Understanding Reference Numbers

Each Identified part in an illustration has a reference number. The reference number for a part also appears in the parts list, along with other information about the part.

This catalog uses two special reference number formats, one to indicate parts in a service assembly and another to indicate the quantity of a given part in an illustration.

Service Assembly Reference Numbers

Parts in service assemblies have reference numbers in the form a:b. The a represents the reference number of the entire service assembly and the b represents a sequential number unique to each part within the service assembly.

For example, a wheel assembly might be identified by reference number 6, the tire by 6:1, the valve by 6:2, and the wheel by 6:3. When you order the assembly identified by reference number 6, you receive all parts identified by reference numbers 6:1, 6:2, and 6:3. However, you may also order any part individually. Reference numbers of this type appear in illustrations and in part lists.

Reference Numbers Indicating Quantity

In an illustration, if a reference number indicates more than one part, the reference number has the form nX y. The n represents the quantity of the part, the X is the multiplication symbol, and the y represents the reference number.

For example, in an illustration, the reference number 2X 37 means that two of the parts identified by reference number 37 are indicated.

Contents

Description	Page	Description	Page
Front Frame Assembly	3	Cylinder/Crankcase Assembly Kawasaki FH721D-AS08	26
Castor and Wheel Assembly	4	Piston/Crankshaft Assembly Kawasaki FH721D-AS08	28
Main Frame Assembly	5	Valve/Camshaft Assembly Kawasaki FH721D-AS08	30
Brake and Wheel Hub Assembly	6	Lubrication Equipment Assembly Kawasaki FH721D-AS08	32
Steering Control Assembly	7	Cooling Equipment Assembly Kawasaki FH721D-AS08	34
Hydraulic System Assembly	8	Electric Equipment Assembly Kawasaki FH721D-AS08	36
Seat and Roll-Over-Protection-System Assembly	10	Control Equipment Assembly Kawasaki FH721D-AS08	38
Seat Assembly No. 107-1867	11	Carburetor Assembly Kawasaki FH721D-AS08	40
Roll-Over-Protection-System Assembly No. 108-1097	12	Air Filter/Muffler Assembly Kawasaki FH721D-AS08	42
Deck Connection Assembly	13	Fuel Tank/Valve Assembly Kawasaki FH721D-AS08	44
60in Deck Assembly	14	Starter Assembly Kawasaki FH721D-AS08	46
Spindle Assembly No. 106-3217	16	Power Take Off Equipment Assembly Kawasaki FH721D-AS08	48
Deck Decal Assembly No. 107-1624	17	Steering Control Assembly	49
Rubber Deflector Assembly No. 108-2792	18	Attachments and Accessories List	50
Lever Assembly No. 106-3242	19		
Drive Idler Assembly	20		
Engine and Clutch Assembly	21		
Muffler and Guard Assembly	22		
Fuel System Assembly	23		
Electrical Components Assembly	24		
Labels Kawasaki FH721D-AS08	25		

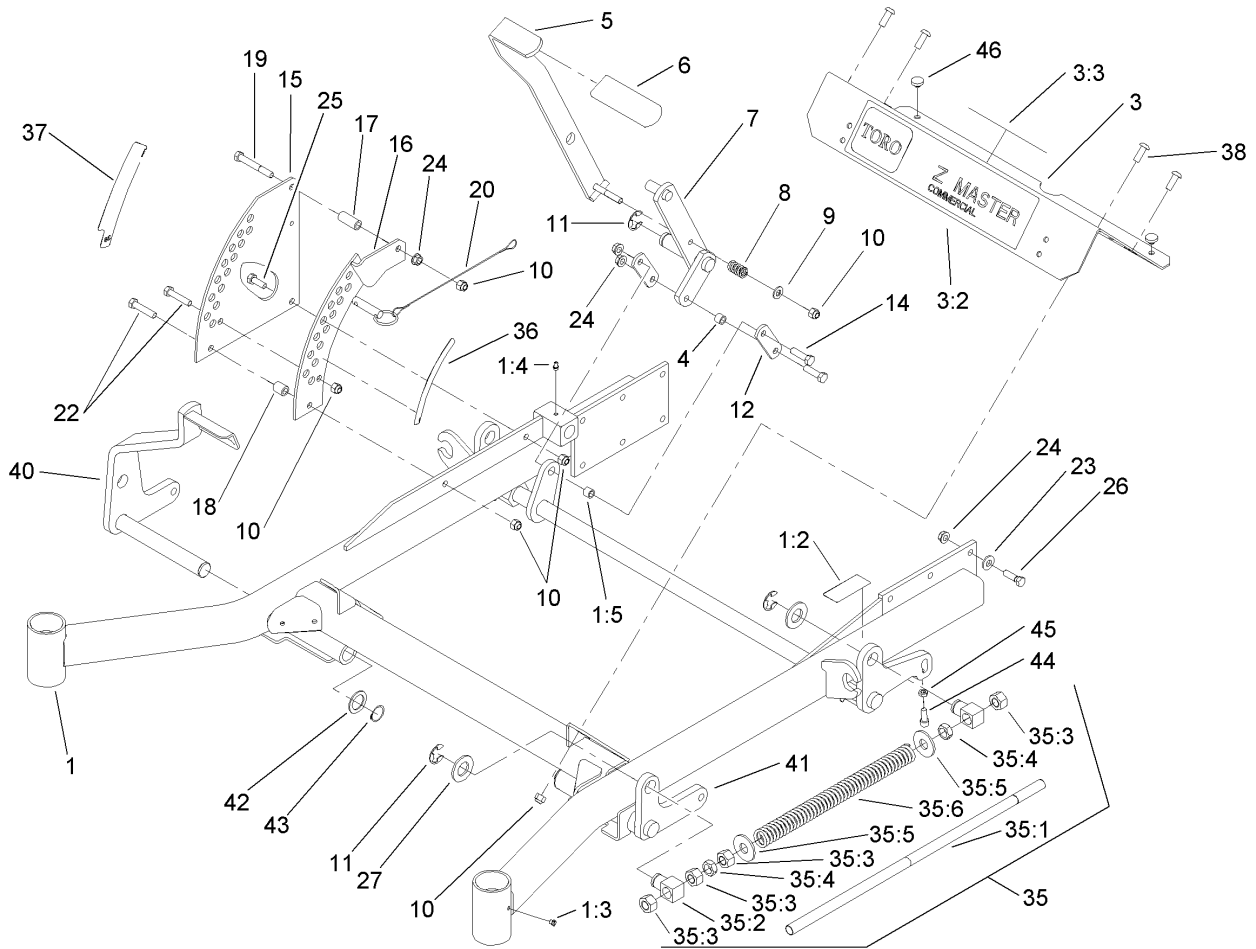
Part Description Abbreviations

Part descriptions in this catalog may include the following abbreviations.

AR. as required	INC. incorporated
ASM. assembly	LH. left hand
CARR. carriage	NI. nylon insert
DEG. degrees	NPTF. national pipe thread fine
FH. flat head	PPH. phillips pan head
GA. gauge	PRH. phillips round head
HF. hex flange	PTH. phillips truss head
HH. hex head	PTO. power take off
HHF. hex head flange	RH. right hand
HHFTF. hex head flange thread forming	ROPS. roll over protection system
HJ. hex jam	SFH. slotted fillister head
HLH. hex lag head	SHH. slotted hex head
HOC. height-of-cut	SHWH. slotted hex washer head
HS. hex	SPH. slotted pan head
HSBH. hex socket button head	SQH. square head
HSFH. hex socket flat head	SRH. slotted round head
HSH. hex socket head	STD. standard
HWH. hex washer head	TAP. self tapping
HWHTF. hex washer head thread forming	TTH. torx truss head
HYD. hydraulic	WH. wing head

Footnotes

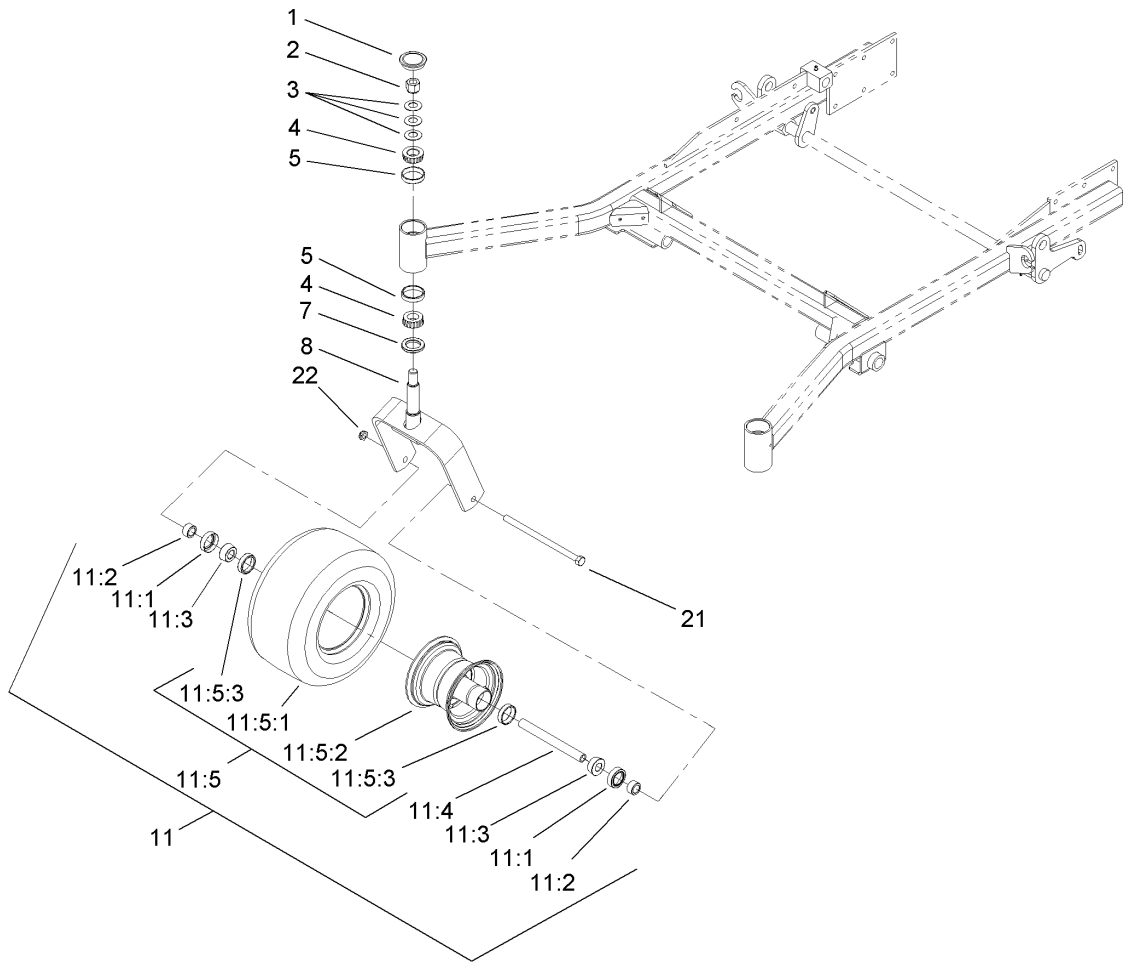
- ❶ Not illustrated
- ❷ Not serviced separately
- ❸ Obtain parts from your local Kawasaki dealer



Front Frame Assembly

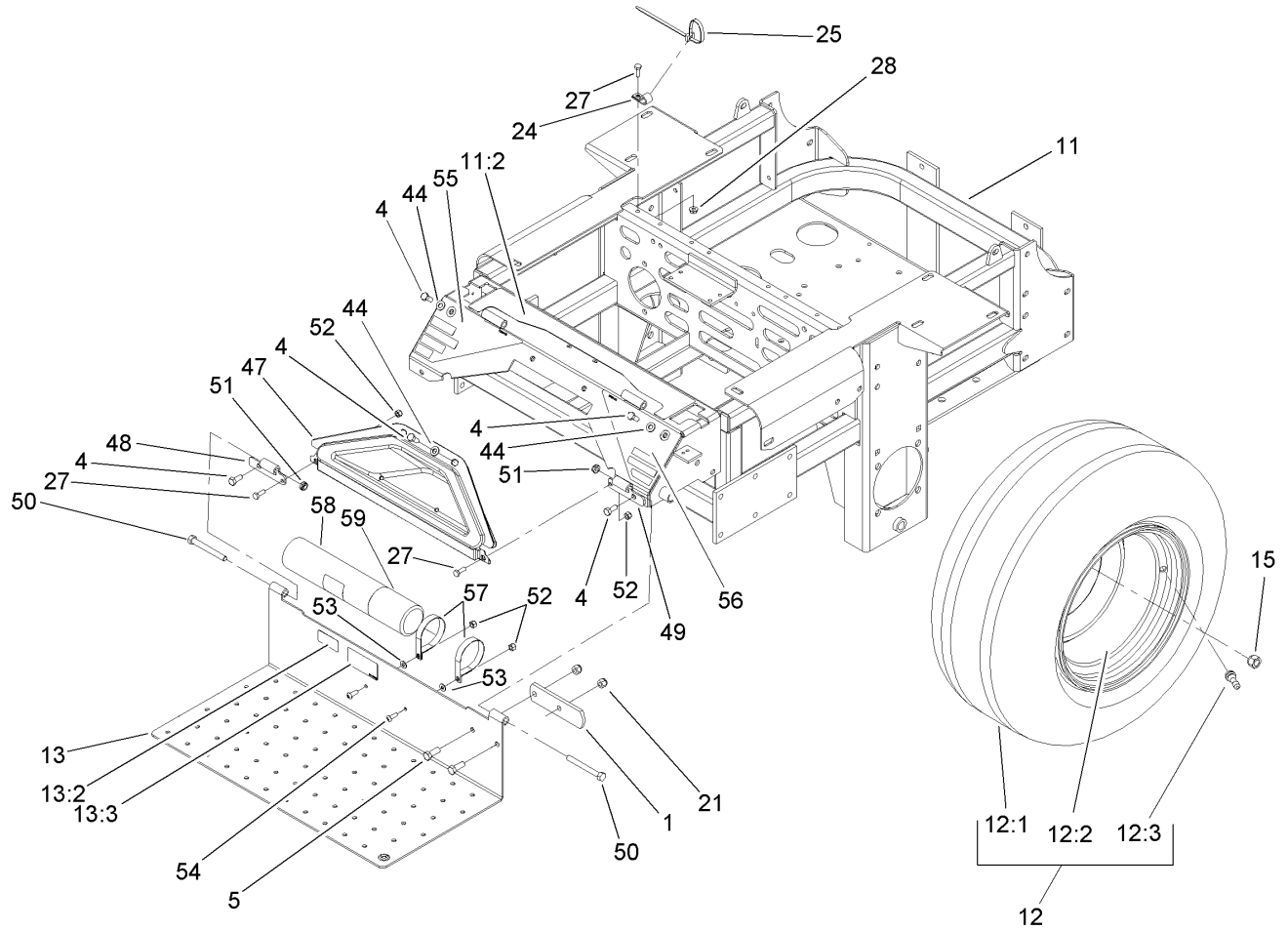
Ref	Part No.	Qty.	Description
1	107-8085	1	Front Frame Asm, No Z
1:2	107-1857	1	Decal-Brake, Parking
1:3	1-811010	2	Plug
1:4	302-19	5	Fitting-Grease
1:5	103-1918	1	Bushing
3	106-9981	1	Front Floorpan ASM
3:2	106-7451	1	Decal
3:3	107-2112	1	Decal-Warning
4	103-1918	1	Bushing
5	103-2083-03	1	Lift Lever ASM
6	1-633295	1	Grip-Lever, Lift
7	103-2064-03	1	Arm-Lift, Deck
8	1-633325	1	Spring-Compression
9	3256-24	1	Washer-Flat
10	3296-39	9	Nut-Lock, NI
11	32151-103	5	Ring-Snap
12	1-633068	2	Arm-Lift, Deck
14	323-29	2	Screw-HH
15	1-633889-01	1	Plate-Lift, Deck
16	1-632899-01	1	Plate-Lift, Deck
17	1-633082	1	Bushing-Lever, Lift
18	1-633080	1	Bushing-Lever, Lift
19	323-13	1	Screw-HH
20	106-9951	1	Hitch Pin ASM

Ref	Part No.	Qty.	Description
22	323-9	2	Screw-HH
23	98-5975	12	Washer-Belleville
24	3290-357	15	Nut-HHF
25	323-6	1	Screw-HH
26	323-7	12	Screw-HH
27	3256-29	4	Washer-Flat
35		2	Front Frame Spring ASM
35:1	1-633096	1	Rod-Lift, Deck
35:2	1-633441	2	Swivel-Deck Mount, Rear
35:3	3217-11	4	Nut-Hex
35:4	3218-6	2	Nut-Jam
35:5	3256-7	2	Washer-Flat
35:6	1-633064	1	Spring-Support, Deck
36	107-1861	1	Decal-Height, Deck
37	107-1860	1	Decal-Height, Deck
38	3274-94	4	Screw-HSBH
40	106-8983-01	1	RH Deck Lift ASM
41	106-8984-01	1	LH Deck Lift ASM
42	1-523157	2	Washer-Spacer
43	32151-29	2	Ring-Retaining
44	3274-18	2	Screw-HSH
45	3218-2	2	Nut-Jam
46	1-513658	2	Bumper



Castor and Wheel Assembly

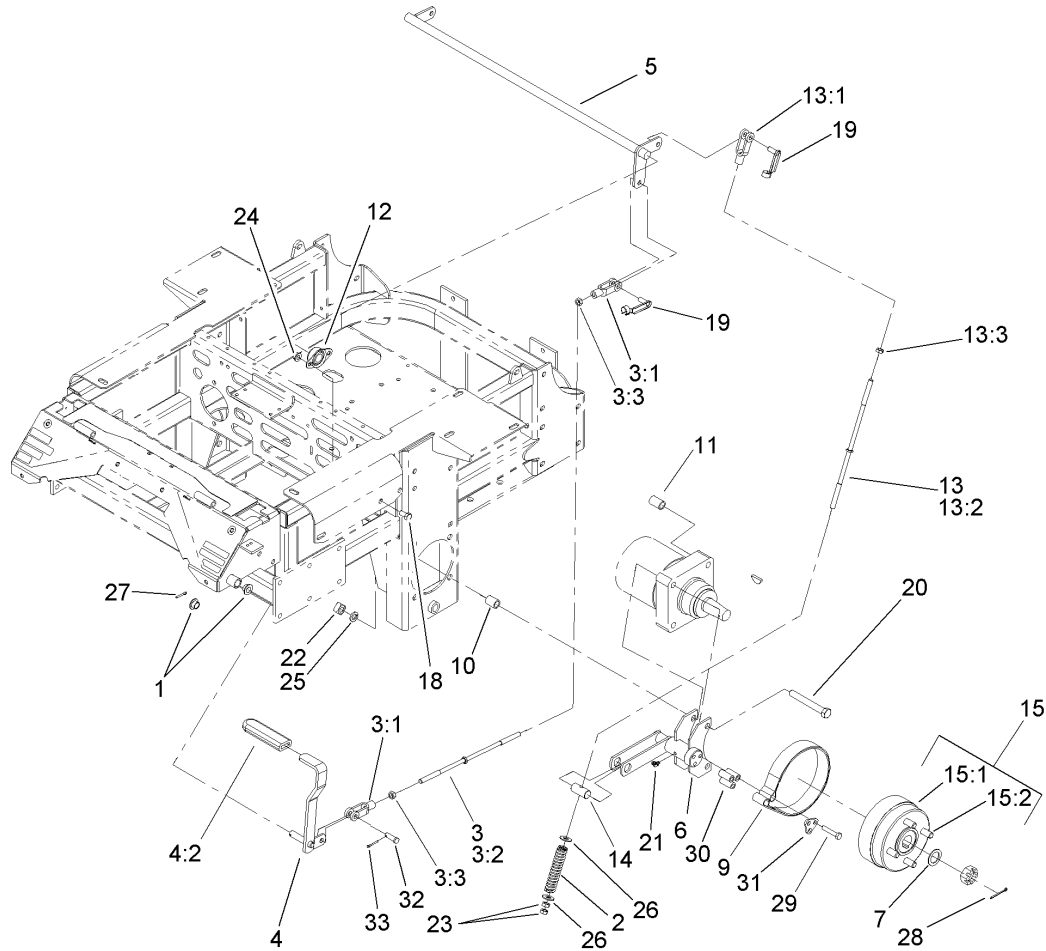
Ref	Part No.	Qty.	Description
1	103-4882	2	Cap-Grease
2	3296-51	2	Nut-Lock, NI
3	1-633508	6	Washer-Bellville
4	254-94	4	Bearing-Cone, Tapered
5	254-72	4	Bearing-Cup, Tapered
7	1-543511	2	Seal-Grease
8	103-1474-01	2	Fork-Caster
11	1-644251	2	Caster Wheel ASM
11:1	1-633580	2	Seal-Bearing
11:2	1-633581	2	Spacer-Bearing
11:3	1-633585	2	Bearing-Cone, Taper
11:4	1-633959	1	Spacer-Caster, Front
11:5		1	Wheel And Tire ASM
11:5:1	1-523009	1	Tire
11:5:2	1-633987	1	Wheel
11:5:3	1-633584	2	Bearing-Cup
21	325-39	2	Screw-HH
22	3296-45	2	Nut-Lock, NI



Main Frame Assembly

Ref	Part No.	Qty.	Description
1	1-633964-03	1	Stop-Brake, Park
4	322-43	6	Screw-HH
5	323-6	2	Screw-HH
11	108-1095	1	Main Frame ASM
11:2	107-8076	1	Decal-Console, Top
12	1-633970	2	Wheel And Tire ASM
12:1	1-633993	1	Tire
12:2	1-633992	1	Wheel
12:3	232-27	1	Stem-Valve
13	107-1858	1	Floorpan
13:2	98-4387	1	Decal-Protection, Ear
13:3	107-1864	1	Decal-Location, Manual
15	242-50	8	Nut-Lug
21	3296-39	2	Nut-Lock, NI
24	1-513762	1	Clip-Loom
25	1-303335	1	Tie-Plastic
27	321-4	3	Screw-HH
28	32128-33	1	Nut-HF
44	3256-70	6	Washer-Flat
47	106-7498	1	Pocket
48	106-7488-03	1	Hinge-Floorpan, LH
49	106-7489-03	1	Hinge-Floorpan, RH
50	323-20	2	Screw-HH
51	3296-59	2	Nut-Lock, NI

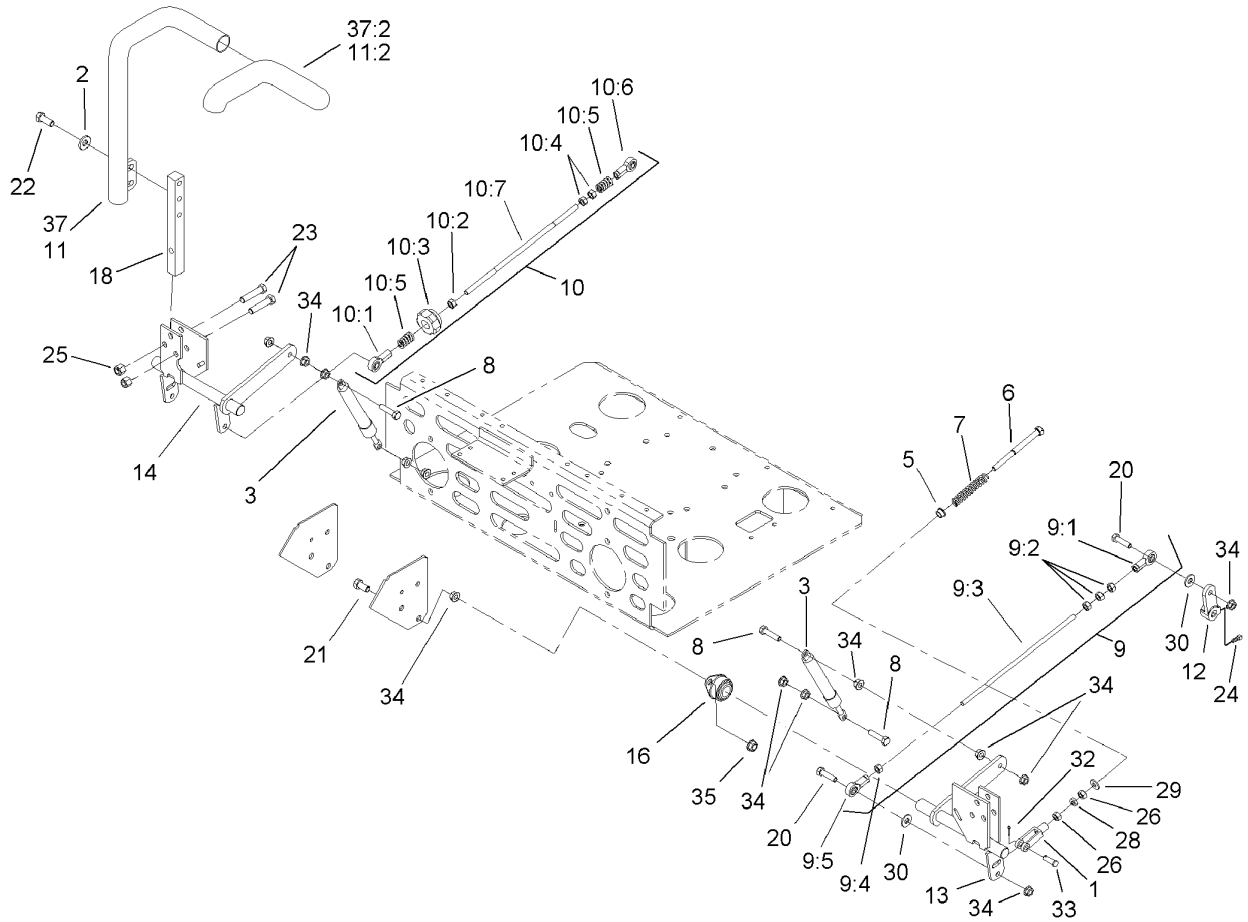
Ref	Part No.	Qty.	Description
52	3296-42	4	Nut-Lock, NI
53	3256-63	2	Washer-Flat
54	3258-166	2	Screw-Prh
55	106-9989	1	Decal-Warning
56	106-7492	1	Decal-Danger
57	107-1865	2	R-Clamp
58	104-7050	1	Housing-Manual
59	104-7048	1	Cap-Housing



Brake and Wheel Hub Assembly

Ref	Part No.	Qty.	Description
1	1-513140	2	Bearing-Control
2	1-633454	2	Spring-Brake
3	103-4332	1	Brake Rod And Yoke ASM
3:1	1-633131	2	Yoke-Linkage, Brake
3:2	1-633477	1	Rod-Brake
3:3	3219-3	2	Nut-Hex
4	1-634500	1	Brake Lever ASM
4:2	1-633268	1	Grip-Lever, Brake
5	1-632217-03	1	Shaft-Brake
6	103-0352-03	2	Bracket-Brake
7	1-523157	2	Washer-Spacer
9	103-0355	2	Band-Brake
10	1-633380	4	Spacer-Wheel, Short
11	1-633382	4	Spacer-Wheel, Long
12	1-633102	2	Bearing-Flange, Side
13	103-4333	2	Brake Rod And Yoke ASM
13:1	1-633131	1	Yoke-Linkage, Brake
13:2	1-633477	1	Rod-Brake
13:3	3219-3	1	Nut-Hex
14	1-633144	2	Pin-Trunion
15	103-0590	2	Hub And Wheel ASM
15:1	103-0589	1	Wheel Hub ASM
15:2	1-633926	4	Stud-Wheel
18	323-4	4	Screw-HH

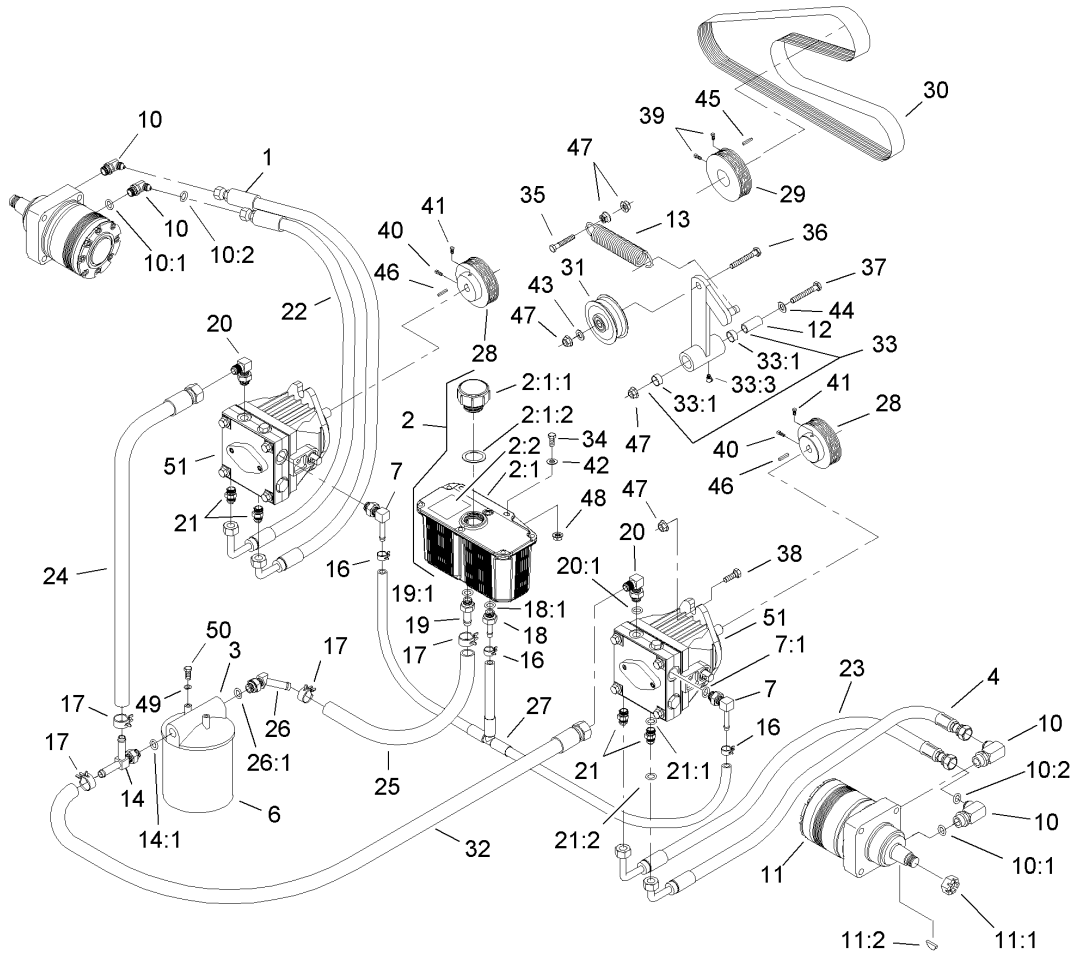
Ref	Part No.	Qty.	Description
19	103-2399	3	Pin-Spring, Clevis
20	325-17	8	Screw-HH
21	1481	2	Fitting-Grease
22	103-0131	8	Nut-Square
23	3219-3	4	Nut-Hex
24	3290-357	4	Nut-HHF
25	3253-7	8	Washer-Lock
26	3256-4	4	Washer-Flat
27	3272-10	1	Pin-Cotter
28	1-806800	2	Pin-Cotter
29	322-9	6	Screw-HH
30	103-0384	6	Spacer
31	103-0374	2	Retainer-Band, Brake
32	1-808285	1	Pin-Clevis
33	3272-10	1	Pin-Cotter



Steering Control Assembly

Ref	Part No.	Qty.	Description
1	1-303105	2	Yoke-Adjustable
2	98-5975	4	Washer-Belleville
3	103-4079	2	Damper-Control, Motion
5	1-603735	2	Bushing-Flanged
6	1-603737	2	Bolt-Return, Neutral
7	1-603807	2	Spring-Return, Neutral
8	1-403180	4	Screw-HH
9	103-4331	1	Tracking Rod ASM
9:1	1-543017	1	Balljoint-RH
9:2	3219-2	3	Nut-Hex
9:3	103-3064	1	Link-Rod, Tracking
9:4	1-804524	1	Nut
9:5	1-633152	1	Balljoint-Thread, LH
10	103-4330	1	Tracking Rod ASM
10:1	1-543017	1	Balljoint-RH
10:2	3219-2	1	Nut-Hex
10:3	103-3060	1	Knob-Tracking
10:4	1-804524	2	Nut
10:5	1-323245	2	Spring-Compression
10:6	1-633152	1	Balljoint-Thread, LH
10:7	103-3064	1	Link-Rod, Tracking
11	106-9982	1	LH Lever ASM
11:2	106-9987	1	Grip-Control, Motion
12	1-632208	2	Arm-Control, Pump

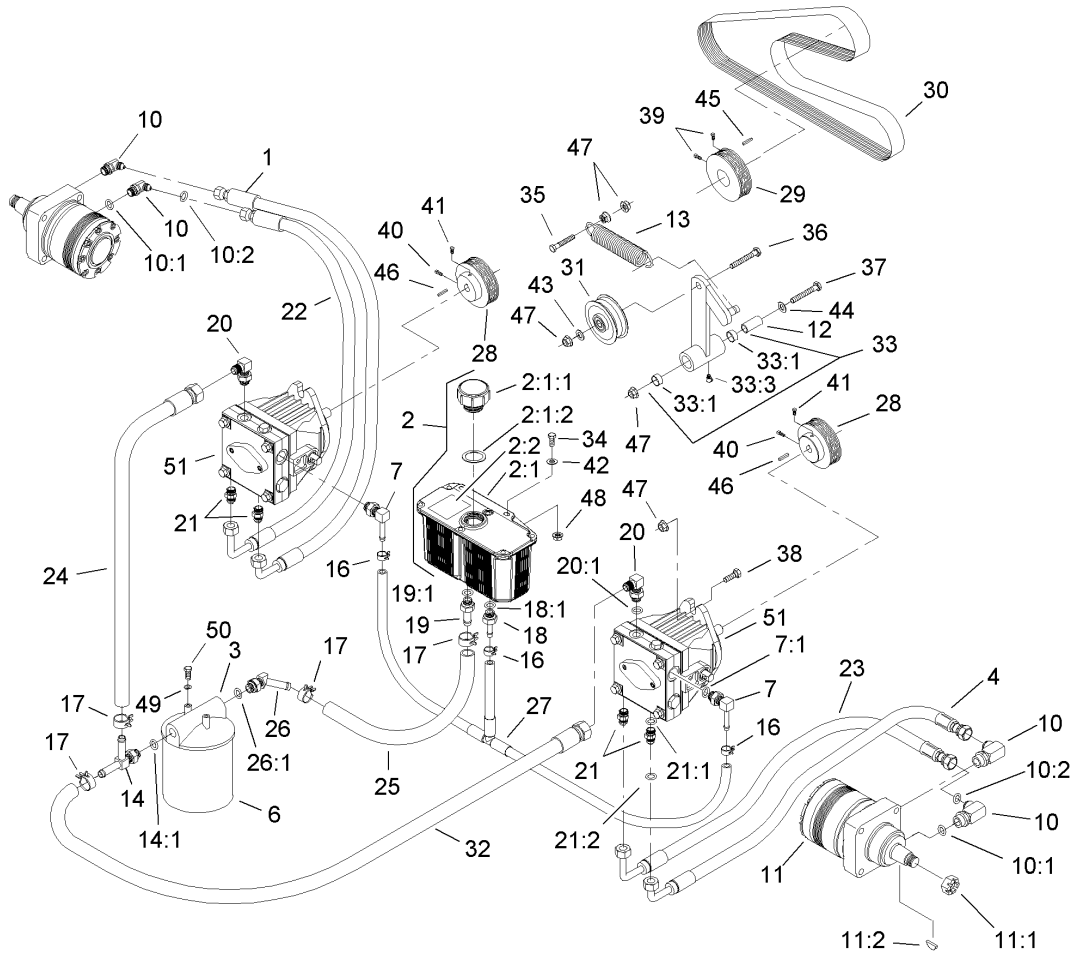
Ref	Part No.	Qty.	Description
13	103-4781	1	Control-Motion, LH
14	103-4782	1	Control-Motion, RH
16	1-633102	4	Bearing-Flange, Side
18	103-0407	2	Arm-Shaft, Control
20	322-6	4	Screw-HH
21	323-4	8	Screw-HH
22	323-6	4	Screw-HH
23	323-9	6	Screw-HH
24	1-803022	2	Screw-Set
25	3296-39	6	Nut-Lock, NI
26	3219-2	4	Nut-Hex
28	3220-2	2	Nut-Jam
29	3256-2	2	Washer-Flat
30	3256-3	4	Washer-Flat
32	3272-5	2	Pin-Cotter
33	1-808280	2	Pin-Clevis
34	32128-20	16	Nut-HF
35	3290-357	8	Nut-HHF
37	106-9983	1	RH Lever ASM
37:2	106-9987	1	Grip-Control, Motion



Hydraulic System Assembly

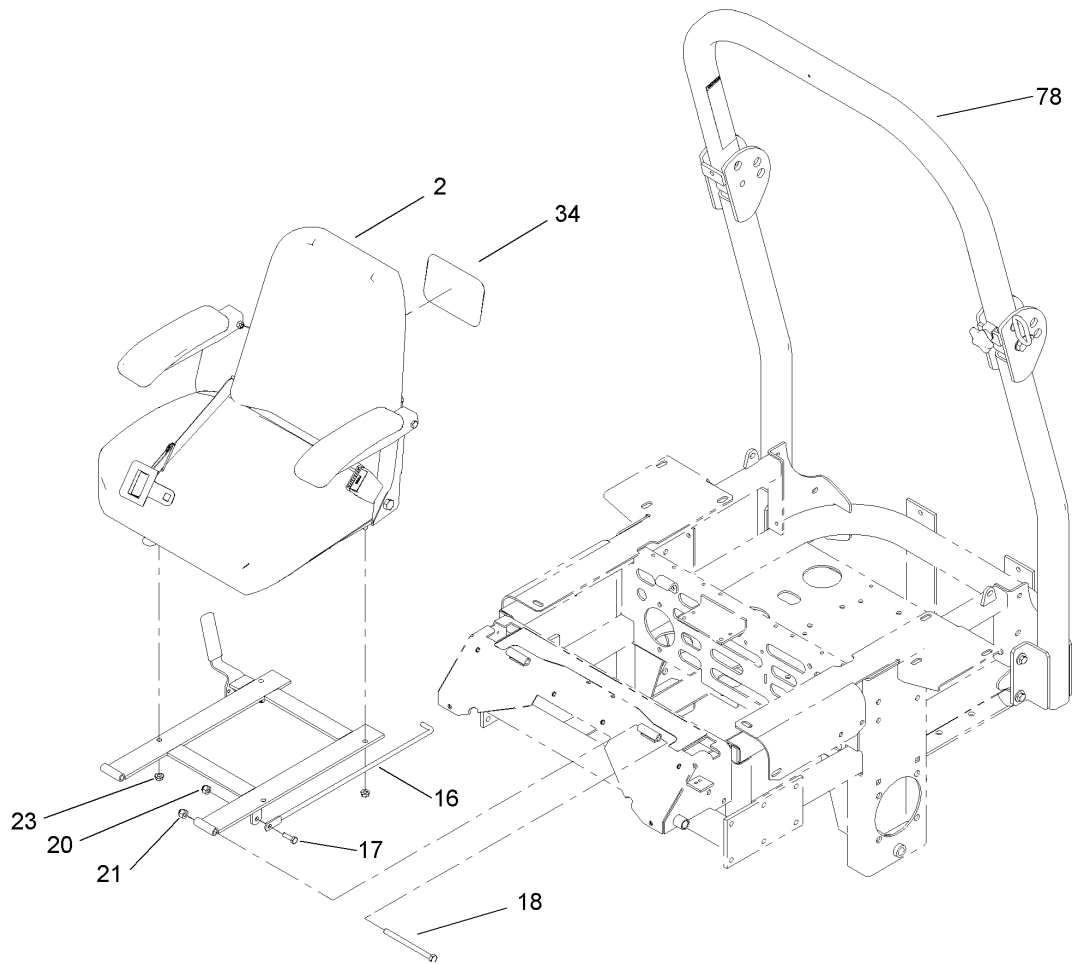
Ref	Part No.	Qty.	Description
1	103-3736	1	HYD Hose ASM
2	103-1947	1	HYD Reservoir ASM
2:1		1	Reservoir-HYD
2:1:1	103-1948	1	Cap-Reservoir, HYD
2:1:2	103-1949	1	Gasket-Cap
2:2	1-523552	1	Decal-Tank, HYD
3	104-7836	1	Head-Filter
4	103-3733	1	HYD Hose ASM
6	1-633750	1	Filter-HYD
6	1-633752	1	Filter-Hyd, Winter
7	103-1799	2	Elbow-90 DEG
7:1	237-42	1	O-Ring
10	1-603991	4	Fitting-Straight
10:1	237-80	1	O-Ring
10:2	1-603992	1	O-Ring
11	103-6988	2	Motor-Wheel
11:1	1-809036	1	Nut-HH
11:2	3257-42	1	Key-Woodruff
11:99	103-2748	1	Drive Link Kit
11:99	1-000099	1	Seal Kit
11:99	1-000139	1	Bearing Kit
12	1-603384	1	Bushing-Pivot, Idler
13	103-3330	1	Spring-Extension
14	103-1828	1	Adapter-Run, Tee

Ref	Part No.	Qty.	Description
14:1	237-42	1	O-Ring
16	103-1716	3	Clamp-Hose
17	103-1988	4	Clamp-Hose
18	103-1801	1	Adapter-Straight
18:1	237-42	1	O-Ring
19	103-1912	1	Adapter-Straight
19:1	237-42	1	O-Ring
20	103-1802	2	Fitting-Hyd, 90 DEG
20:1	1-603921	1	O-Ring
21	1-603990	4	Fitting-Straight
21:1	1-603920	1	O-Ring
21:2	1-603992	1	O-Ring
22	103-3737	1	HYD Hose ASM
23	103-3735	1	HYD Hose ASM
24	103-1826	1	HYD Hose ASM
25	103-1808	1	Hose-HYD
26	103-1807	1	Elbow-45 DEG
26:1	237-42	1	O-Ring
27	103-1806	1	HYD Hose ASM
28	103-6907	2	Sheave
29	1-633567	1	Sheave
30	103-7445	1	Belt-V
31	1-633167	1	Sheave-Idler
32	103-1827	1	HYD Hose ASM



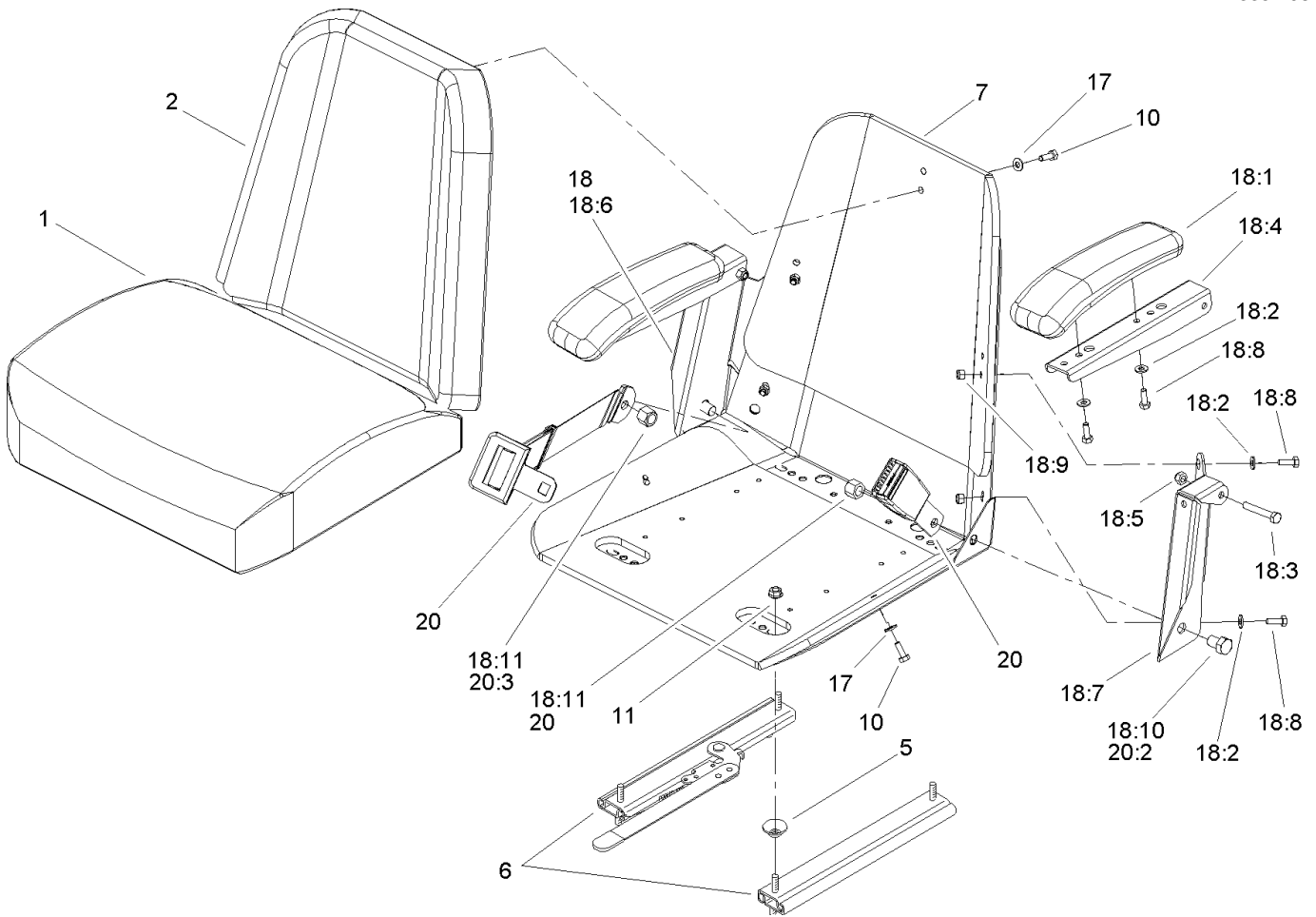
Hydraulic System Assembly (continued)

Ref	Part No.	Qty.	Description
33	1-634277	1	Bearing Arm ASM
33:1	1-513034	2	Sleeve-Bearing
33:3	302-40	1	Fitting-Grease
34	321-6	2	Screw-HH
35	323-8	1	Screw-HH
36	323-9	1	Screw-HH
37	1-800805	1	Screw-HH
38	323-7	4	Screw-HH
39	1-803022	2	Screw-Set
40	30-1710	2	Screw
41	1-803050	2	Screw-Set
42	3256-22	2	Washer-Flat
43	3256-3	1	Washer-Flat
44	3256-4	1	Washer-Flat
45	13-2840	1	Key-Square
46	1-807272	2	Key
47	3290-357	8	Nut-HHF
48	32128-33	2	Nut-HF
49	1-805004	2	Washer-Lock
50	321-3	2	Screw-HH
51	103-7262	2	Pump-HYD



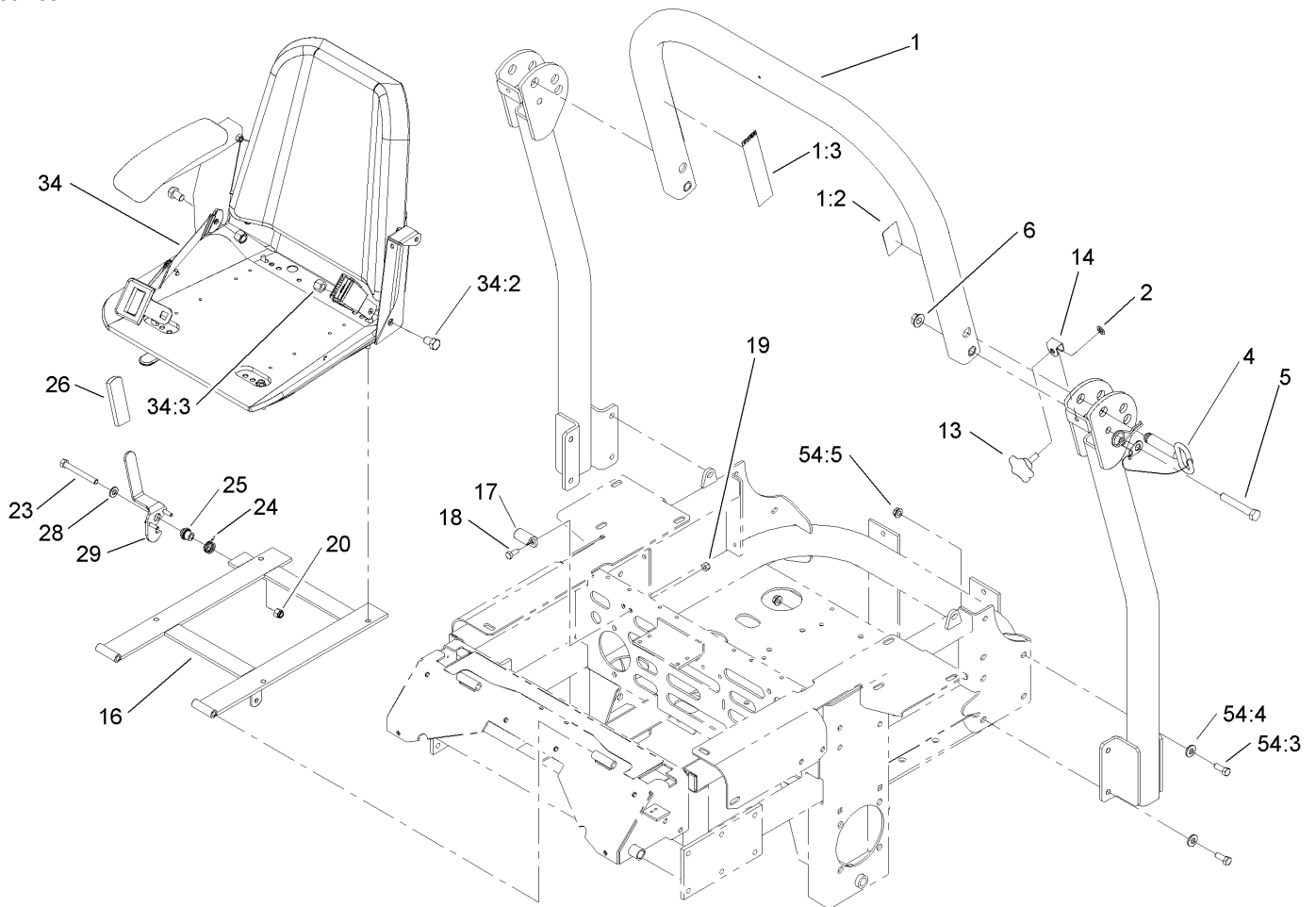
Seat and Roll-Over-Protection-System Assembly

Ref	Part No.	Qty.	Description				
2	107-1867	1	Seat ASM				
16	1-633293	1	Rod-Holdup, Seat				
17	322-5	1	Screw-HH				
18	323-39	2	Screw-HH				
20	3296-29	3	Nut-Lock, NI				
21	3296-39	3	Nut-Lock, NI				
23	32128-20	4	Nut-HF				
34	99-4693	1	Decal				
78	108-1097	1	Rops ASM				



Seat Assembly No. 107-1867

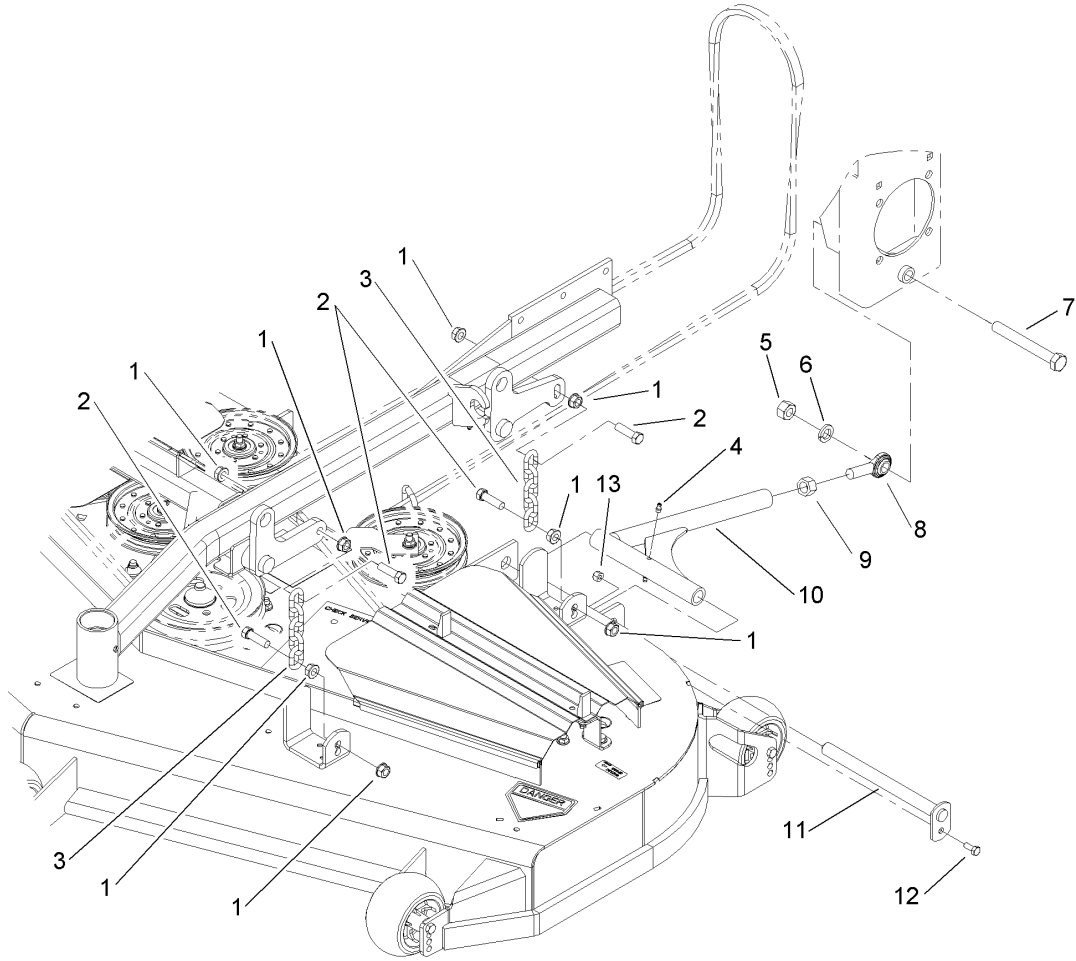
Ref	Part No.	Qty.	Description
1	103-0290	1	Cushion-Seat, Bottom
2	104-7754	1	Cushion-Seat, Back
5	1-543401	4	Spacer-Track
6	1-643255	1	Track-Seat
7	1-633859	1	Frame-Seat
10	321-30	11	Screw-HH
11	32128-20	4	Nut-HF
17	3256-22	11	Washer-Flat
18	105-3620	1	Armrest Kit
18:1	1-633710	2	Cushion-Armrest
18:2	3256-22	4	Washer-Flat
18:3	322-10	2	Screw-HH
18:4	105-3623	2	Channel-Armrest
18:5	32153-3	2	Nut-Lock, Side
18:6	105-3621	1	Bracket-Armrest, RH
18:7	105-3622	1	Bracket-Armrest, LH
18:8	321-30	6	Screw-HH
18:9	3296-42	4	Nut-Lock, NI
18:10	325-2	2	Screw-HH
18:11	3296-23	2	Nut-Lock, NI
20	103-4469	1	Seatbelt Kit
20:2	3212-4	2	Screw-HH
20:3	3296-38	2	Nut-Lock NI



Roll-Over-Protection-System Assembly No. 108-1097

Ref	Part No.	Qty.	Description
① 1		1	Upper Tube ASM
1:2	107-2101	1	Decal-Rops
1:3	107-2102	1	Decal-Warning, Folding Rops
2	107-3154	2	Nut-Push
4	103-4553	2	Rops Fold Pin ASM
5	325-13	2	Screw-HH
6	32128-23	2	Nut-HF
13	106-0887	2	Knob
14	107-3124	2	Clip
16	107-3052-03	1	Seat Support Frame ASM
17	107-3058	1	Catch-Latch, Seat
18	322-3	2	Screw-HH
19	3296-29	2	Nut-Lock, NI
20	3296-39	1	Nut-Lock, NI
24	107-0076	1	Spring-Torsion
25	107-0075	1	Bushing-Latch, Seat
26	62-9130	1	Grip-Handle
28	3256-24	1	Washer-Flat
29	107-3083	1	Latch ASM
34	103-4469	1	Seatbelt Kit
34:2	3212-4	2	Screw-HH
34:3	3296-38	2	Nut-Lock NI
① 54		1	Rops Bolt Bag
54:3	323-6	8	Screw-HH

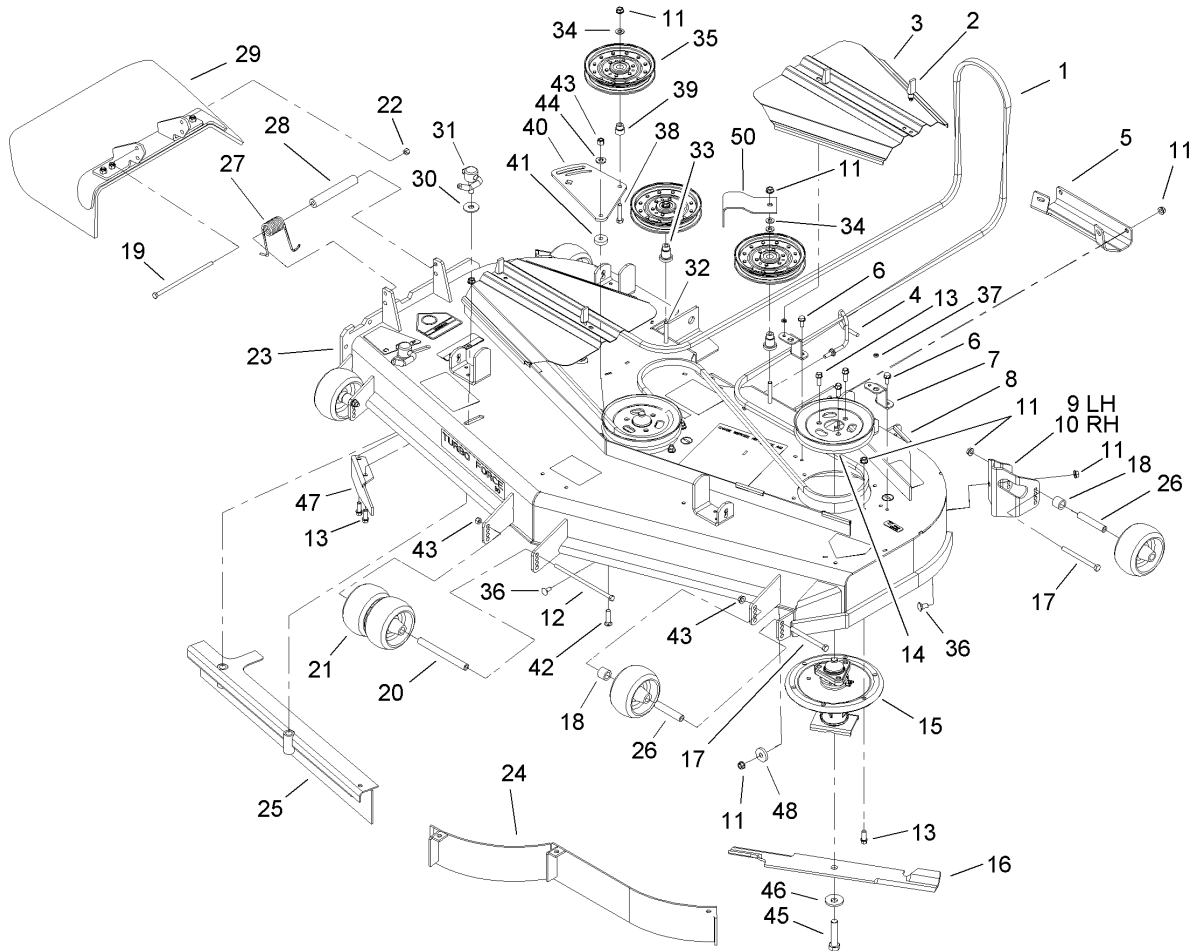
Ref	Part No.	Qty.	Description
54:4	98-5975	8	Washer-Belleville
54:5	3290-357	8	Nut-HHF



Deck Connection Assembly

Ref	Part No.	Qty.	Description
1	32128-37	16	Nut-HF
2	103-1898	8	Screw-HH
3	1-633447	4	Chain-Lift, Deck
4	302-19	4	Fitting-Grease
5	3217-11	2	Nut-Hex
6	3253-8	2	Washer-Lock
7	327-11	2	Screw-HH
8	1-633029	2	Balljoint-Spherical
9	3219-6	2	Nut-Hex
10	103-1072-01	2	Strut
11	1-632199-01	2	Pin-Strut
12	322-3	2	Screw-HH
13	3296-29	2	Nut-Lock, NI

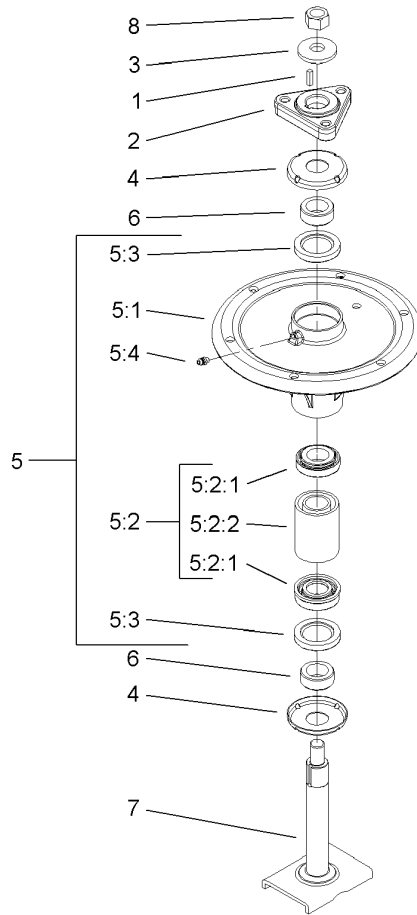
--	--	--	--



60in Deck Assembly

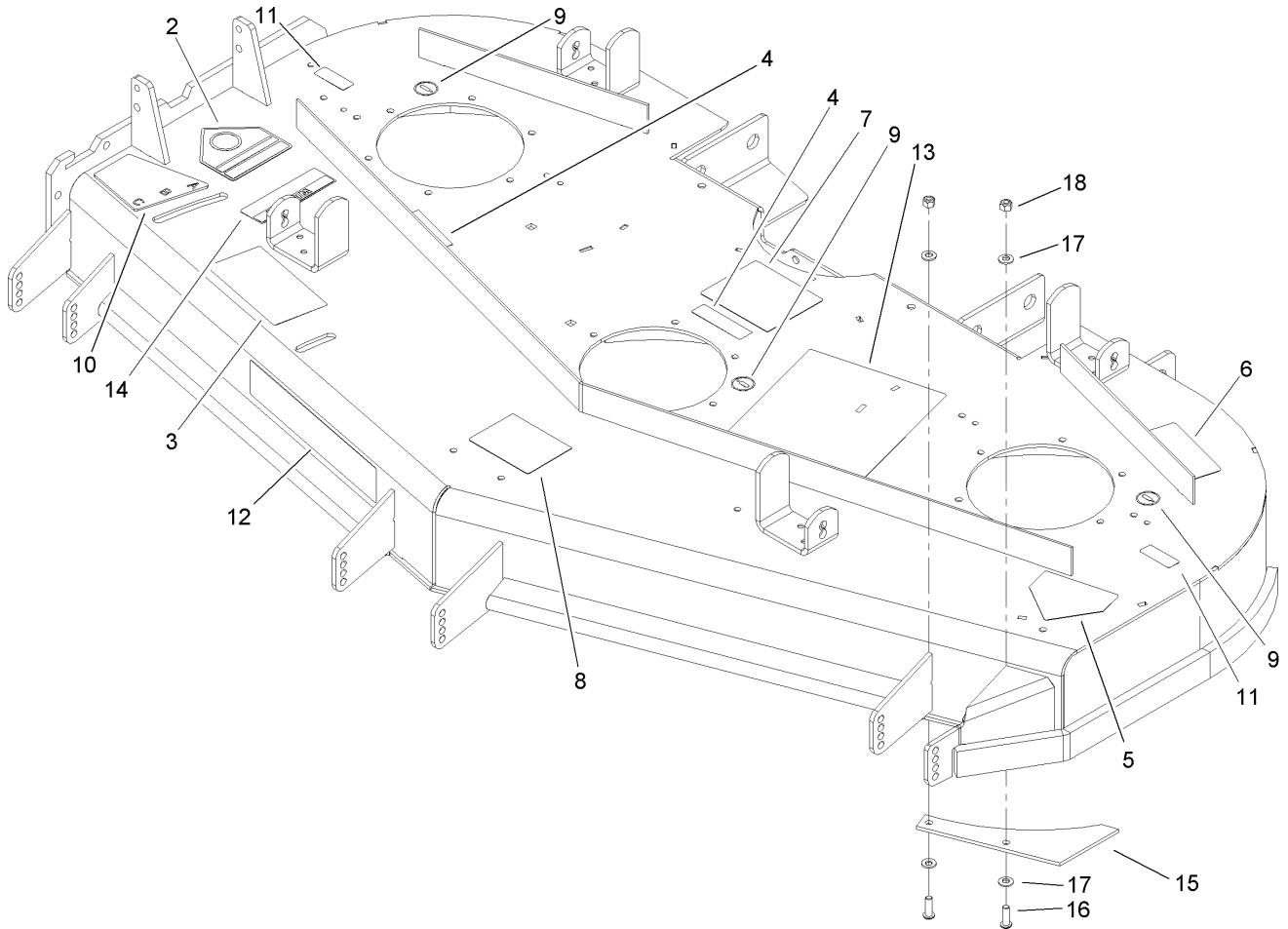
Ref	Part No.	Qty.	Description
1	105-8783	1	Belt
2	74-5950	4	Latch-Swell
3	105-8786-01	2	Cover-Belt
4	106-3220	1	Guide-Belt
5	105-8792-01	1	Plate-Skid
6	32144-70	4	Screw-HH
7	105-8787-01	4	Bracket-Cover
8	105-7699	8	Strip-Seal
9	106-7354-01	1	Plate-Roller, LH
10	106-7355-01	1	Plate-Roller, RH
11	3290-357	38	Nut-HHF
12	323-28	1	Screw-HH
13	92-1624	33	Screw
14	105-7734	3	Pulley
15	106-3217	3	Spindle ASM
16	105-7718-03	3	Blade-Hi Flow
17	323-23	4	Screw-HH
18	98-7913	4	Tube-Spacer
19	322-50	1	Screw-HH
20	98-5967	1	Spacer-Wheel
21	1-603299	6	Roller-Anti Scalp
22	3296-29	1	Nut-Lock, NI
23	107-1624	1	Deck ASM
24	105-7657-01	1	Baffle ASM

Ref	Part No.	Qty.	Description
25	105-7669-01	1	Baffle ASM
26	98-7912	4	Tube-Spacer
27	108-4052	1	Spring-Torsion
28	105-4622	1	Spacer
29	108-2792	1	Deflector-Rubber, ASM
30	105-7697	2	Washer-Plastic
31	106-3242	2	Lever ASM
32	323-12	2	Screw-HH
33	106-3214	2	Mount-Pulley
34	3256-24	4	Washer-Flat
35	1-633109	3	Idler-Flat
36	3231-1	10	Screw-CARR
37	99-3058	4	Washer
38	323-9	1	Screw-HH
39	1-603496	1	Bushing-Idler
40	105-7787-01	1	Plate-Idler
41	105-7788	2	Spacer
42	3231-4	2	Screw-CARR
43	3296-39	7	Nut-Lock, NI
44	98-5975	1	Washer-Belleville
45	103-0862	3	Screw-Cap
46	103-0865	3	Washer-Blade Bolt, Heavy
47	106-3216-01	1	Baffle-Discharge
48	112843	1	Washer



Spindle Assembly No. 106-3217

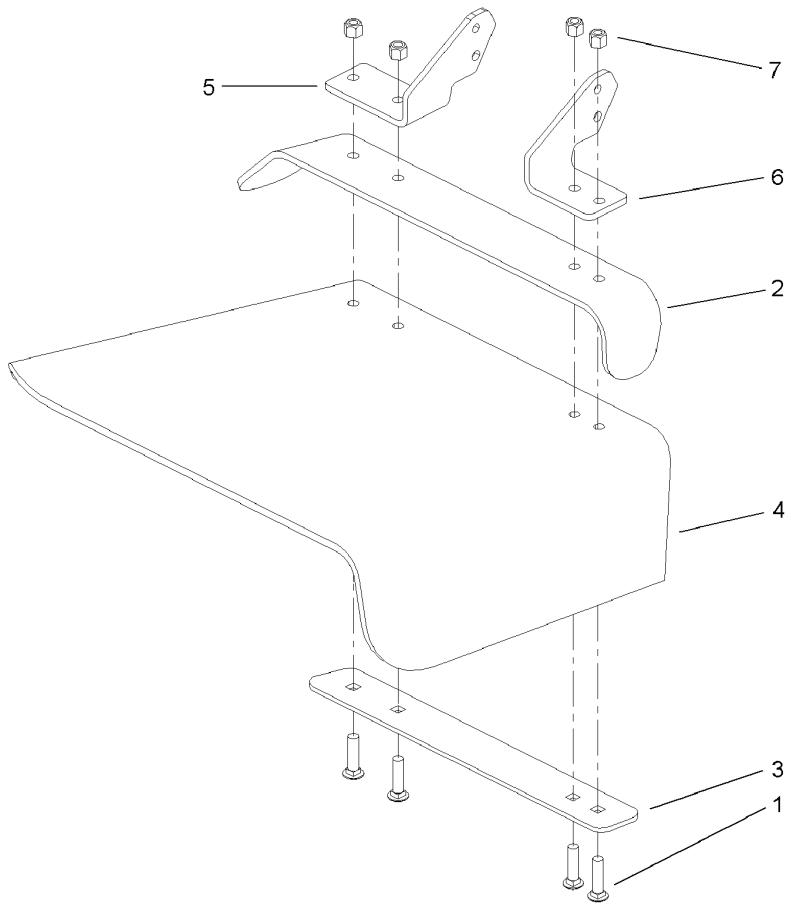
Ref	Part No.	Qty.	Description			
1	10-8040	1	Key-Square			
2	106-3277	1	Hub-Pulley			
3	103-0865	1	Washer-Blade Bolt, Heavy			
4	106-3204	2	Shield-Bearing			
5		1	Spindle Bearing ASM			
5:1	106-3211	1	Housing-Spindle			
5:2	106-3207	1	Bearing ASM			
5:2:1	27-0960	1	Bearing ASM			
5:2:2	106-3206	1	Spacer-Set, Matched			
5:3	253-133	2	Seal-Oil			
5:4	302-5	1	Fitting-Grease			
6	106-3218	2	Spacer-Seal			
7	106-3233	1	Spindle Shaft ASM			
8	3219-6	1	Nut-Hex			



Deck Decal Assembly No. 107-1624

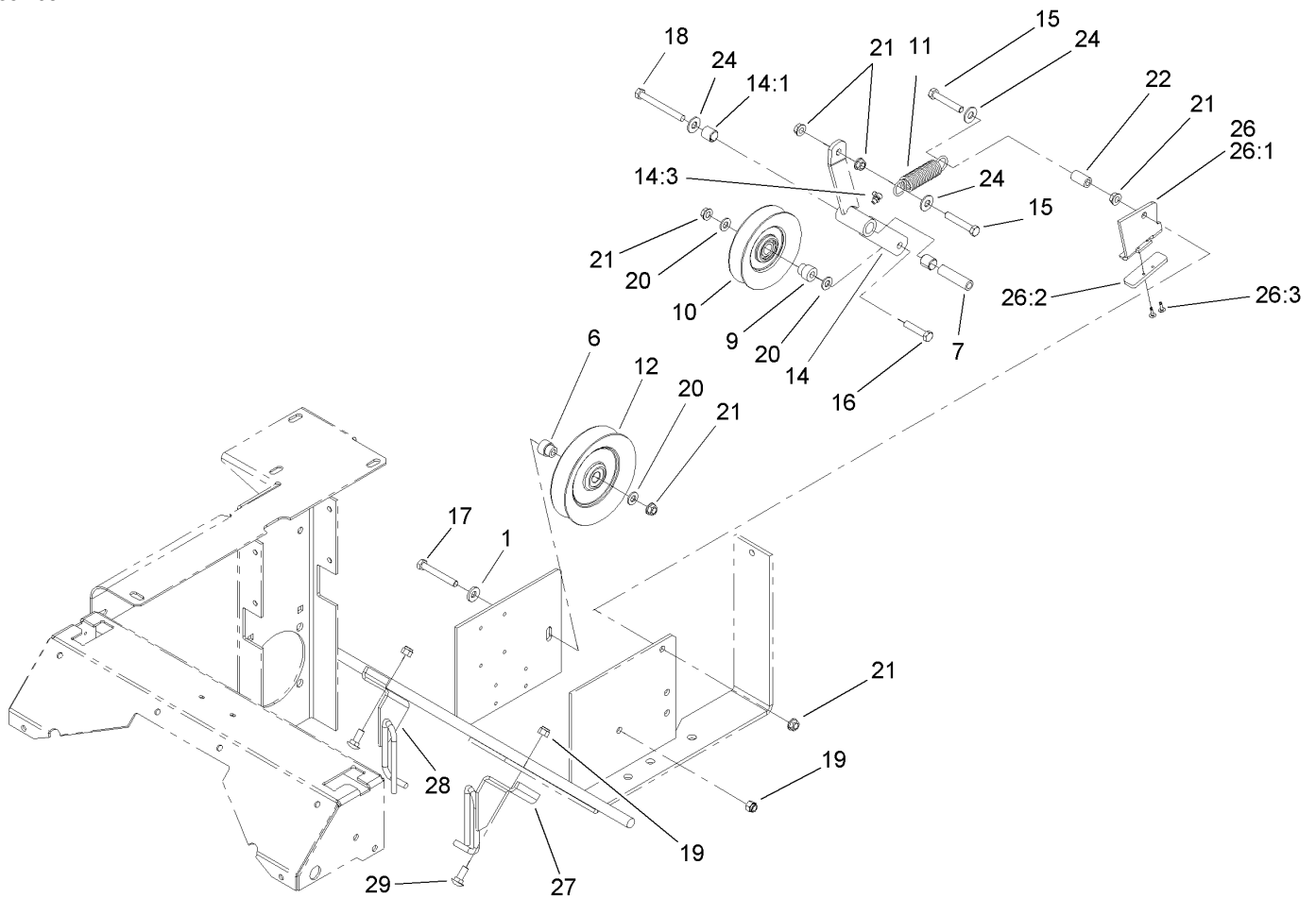
Ref	Part No.	Qty.	Description
2	54-9220	1	Decal-Danger
3	66-1340	1	Decal-Danger
4	98-5954	3	Decal-Missing, Cover
5	43-8480	1	Decal-Danger
6	68-8340	1	Decal-Torque
7	105-7797	1	Decal-Routing, Belt
8	105-7798	1	Decal-Anti Scalp
9	58-6520	3	Decal-Grease
10	107-1622	1	Decal-Adjustment, Baffle
11	107-1613	2	Decal-Grease
12	107-1619	1	Decal
13	107-1621	1	Decal-Service, Check
14	104-8569	1	Decal-Warning
15	107-3137	1	Plate-Turbo
16	3274-104	2	Screw-HSBH
17	1-303334	4	Washer-Spring
18	3296-29	2	Nut-Lock, NI

--	--	--	--



Rubber Deflector Assembly No. 108-2792

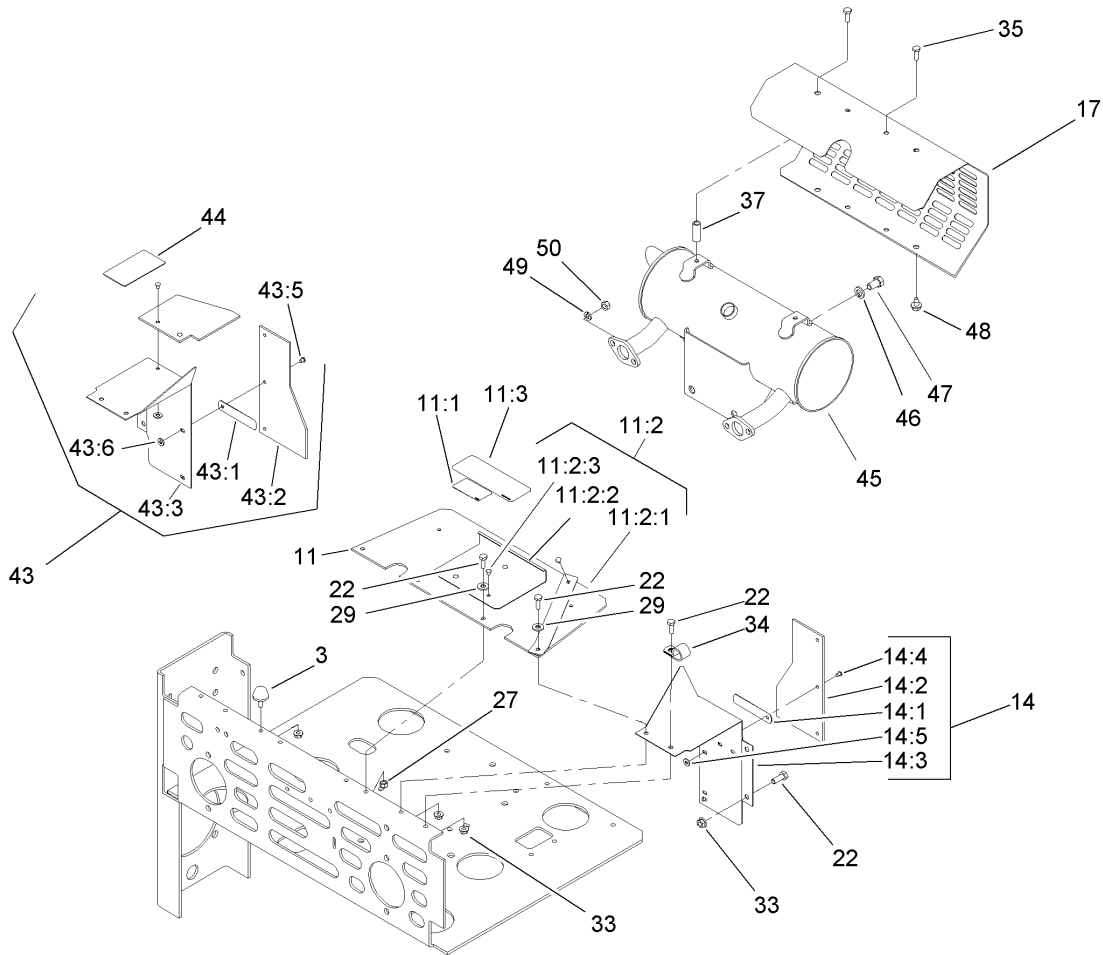
Ref	Part No.	Qty.	Description
1	3231-4	4	Screw-CARR
2	106-3246-01	1	Deflector
3	106-3248-03	1	Strap-Discharge
4	108-5029	1	Deflector-Rubber
5	108-4059-01	1	Plate-Hinge, Rear
6	106-3253-01	1	Plate-Hinge, Front
7	3296-39	4	Nut-Lock, NI



Drive Idler Assembly

Ref	Part No.	Qty.	Description
1	98-5975	1	Washer-Belleville
6	103-2627	1	Bushing-Idler
7	1-603384	1	Bushing-Pivot, Idler
9	1-603496	1	Bushing-Idler
10	99-4638	1	Idler
11	1-603402	1	Spring-Extension
12	1-633166	1	Pulley-Idler
14	103-3147	1	Arm ASM
14:1	1-513034	2	Sleeve-Bearing
14:3	302-40	1	Fitting-Grease
15	323-12	2	Screw-HH
16	323-9	1	Screw-HH
17	323-13	1	Screw-HH
18	1-800805	1	Screw-HH
19	3296-39	3	Nut-Lock, NI
20	3256-24	3	Washer-Flat
21	3290-357	6	Nut-HHF
22	1-603401	1	Spacer-Fender
24	3256-4	3	Washer-Flat
26	106-3271	1	Travel Limiter ASM
26:1	106-3228-03	1	Plate-Limiter, Pulley
26:2	106-3229	1	Pad-Bumper
26:3	3269-24	2	Rivet
27	108-7204-03	1	Guide-Belt, LH

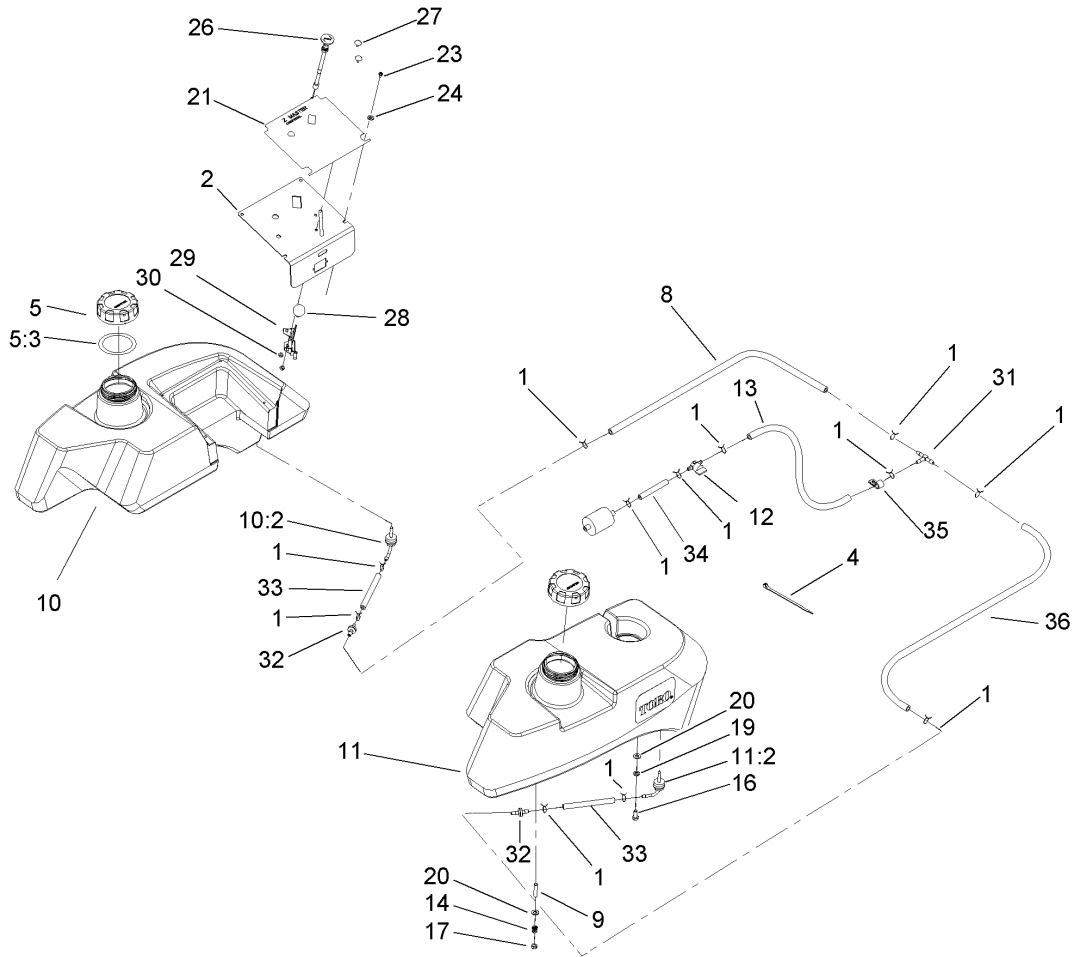
Ref	Part No.	Qty.	Description
28	108-7229-03	1	Guide-Belt, RH
29	3231-2	2	Screw-CARR



Muffler and Guard Assembly

Ref	Part No.	Qty.	Description
3	1-523420	2	Bumper
11	105-6196	1	Shield ASM
11:1	1-633462	1	Decal-Important
11:2	103-1301	1	Drive Cover ASM
11:2:1	103-1308	1	Shield-Engine
11:2:2	103-1304-03	1	Plate-Cover, Drive
11:2:3	1-803035	5	Rivet-Pop
11:3	103-5881	1	Decal-Devices, Rotating
14	103-0241	1	LH Extended Shield ASM
14:1	1-523285	2	Clip-Baffle, Rear
14:2	103-0243	1	Shield
14:3	1-633795-03	1	Baffle-Engine Shield, LH
14:4	1-803035	3	Rivet-Pop
14:5	3256-63	3	Washer-Flat
17	1-643313-03	1	Guard-Muffler
22	321-4	10	Screw-HH
27	3296-42	4	Nut-Lock, NI
29	3256-2	4	Washer-Flat
33	32128-33	5	Nut-HF
34	1-633396	1	Clip-Loom
35	1-809108	2	Screw-HWH
37	1-323236	2	Spacer
43	103-0242	1	RH Extended Shield ASM
43:1	1-523285	2	Clip-Baffle, Rear

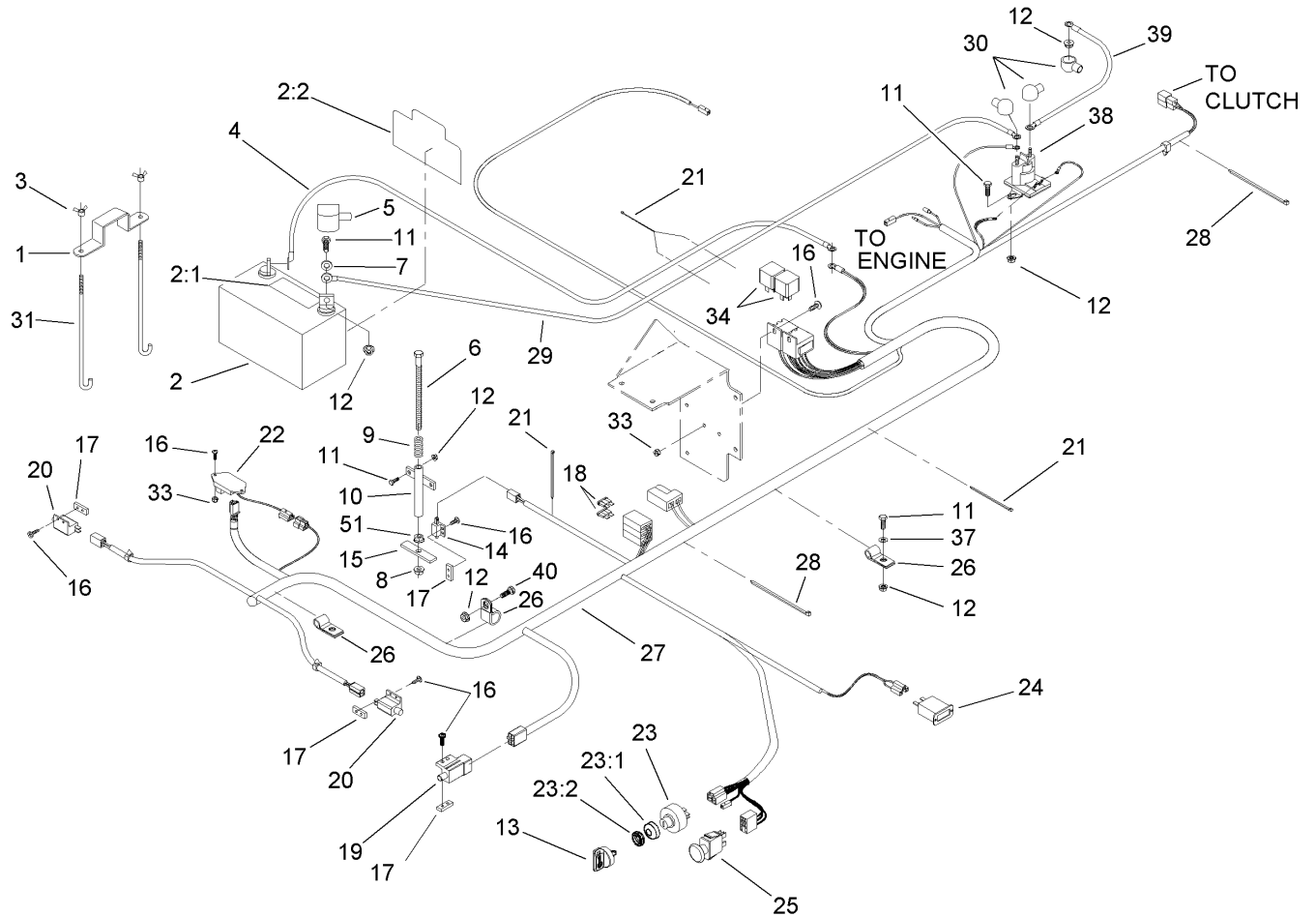
Ref	Part No.	Qty.	Description
43:2	103-0243	1	Shield
43:3	1-633794-03	1	Shield-RH
43:5	1-803035	3	Rivet-Pop
43:6	3256-63	3	Washer-Flat
44	1-643339	1	Decal-Routing, Belt
45	103-2758	1	Muffler
46	3253-6	2	Washer-Lock
47	324-2	2	Screw-HH
48	9266934	2	Screw
49	1-805005	4	Washer-Lock
50	33014-00	4	Nut-Hex



Fuel System Assembly

Ref	Part No.	Qty.	Description
1	1-303077	13	Clamp
2	107-8079-03	1	Panel-Control
4	1-303335	4	Tie-Plastic
5	88-3980	2	Gas Cap ASM
5:3	88-4010	1	Gasket-Cap, Gas
8	94-7420	1	Hose-Fuel
9	1-633023	6	Stud
10	106-9980	1	LH Fuel Tank ASM
10:2	103-2605	1	Fitting-Fuel, Bulkhead
11	106-9979	1	RH Fuel Tank ASM
11:2	103-2605	1	Fitting-Fuel, Bulkhead
12	1-603770	1	Valve-Fuel
13	107-2119	1	Hose-Fuel
14	1-633349	6	Spring-Tank, Fuel
16	322-3	2	Screw-HH
17	3296-47	6	Nut-Lock, NI
19	1-805005	2	Washer-Lock
20	3256-23	8	Washer-Flat
21	106-9969	1	Decal-Panel, Control
23	3251-1	4	Screw-PPH
24	1-303435	4	Washer-Spring
26	106-9962	1	Control-Choke, Push/pull
27	1-807513	2	Bolt-CARR
28	1-513592	1	Knob-Ball

Ref	Part No.	Qty.	Description
29	107-8073	1	Cable-Throttle
30	3296-2	2	Nut-Lock
31	99-5005	1	Fitting-Tee, Barbed
32	99-5000	2	Valve-Check, Fuel
33	99-7190	2	Hose-Fuel
34	105-8342	1	Hose-Fuel
35	1-513762	1	Clip-Loom
36	1-543526	1	Hose-Fuel



Electrical Components Assembly

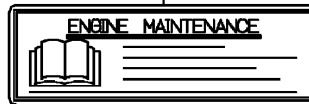
Ref	Part No.	Qty.	Description
1	1-633652-03	1	Strap-Holddown
2	105-1692	1	Battery
2:1	104-4163	1	Decal-Battery
2:2	104-4164	1	Decal-Battery
3	1-543792	2	Wingnut
4	1-633307	1	Wire-Ground
5	1-543391	1	Insulator-Battery
6	1-800282	1	Screw-HH
7	3256-2	2	Washer-Flat
8	3296-29	1	Nut-Lock, NI
9	1-523415	1	Spring-Switch, Seat
10	1-522424-03	1	Mount-Spring, Seat
11	321-4	8	Screw-HH
12	32128-33	8	Nut-HF
13	63-8360	2	Key-Ignition
14	1-513152	1	Switch-Closed, Normally
15	1-513180	1	Plate-Switch, Seat
16	3290-500	12	Screw-PPH
17	1-633181	4	Plate-Tapped
18	1-816001	2	Fuse-Blade Type, 20 Amp
19	1-633111	1	Switch
20	1-513051	2	Switch-Open, Normally
21	1-303287	5	Tie-Plastic
22	100-6186	1	Module-Delay, Seat

Ref	Part No.	Qty.	Description
23	88-9830	1	Key Switch ASM
23:1	3254-5	1	Washer-Tooth
23:2	218-461	1	Nut-HH
24	1-513374	1	Meter-Hour
25	1-633673	1	Switch-Delta
26	1-633396	3	Clip-Loom
27	106-7494	1	Harness-Wire
28	1-303335	2	Tie-Plastic
29	1-523281	1	Wire-Starter
30	1-543393	3	Insulator-Solenoid
31	1-633651	2	Bolt-Holddown
33	3296-2	4	Nut-Lock
34	1-643275	2	Relay
37	3256-22	1	Washer-Flat
38	1-513075	1	Switch-Solenoid
39	1-633306	1	Wire-Starter
40	321-2	1	Screw-HH
51	3217-6	1	Nut-Hex

56080



56033



56070

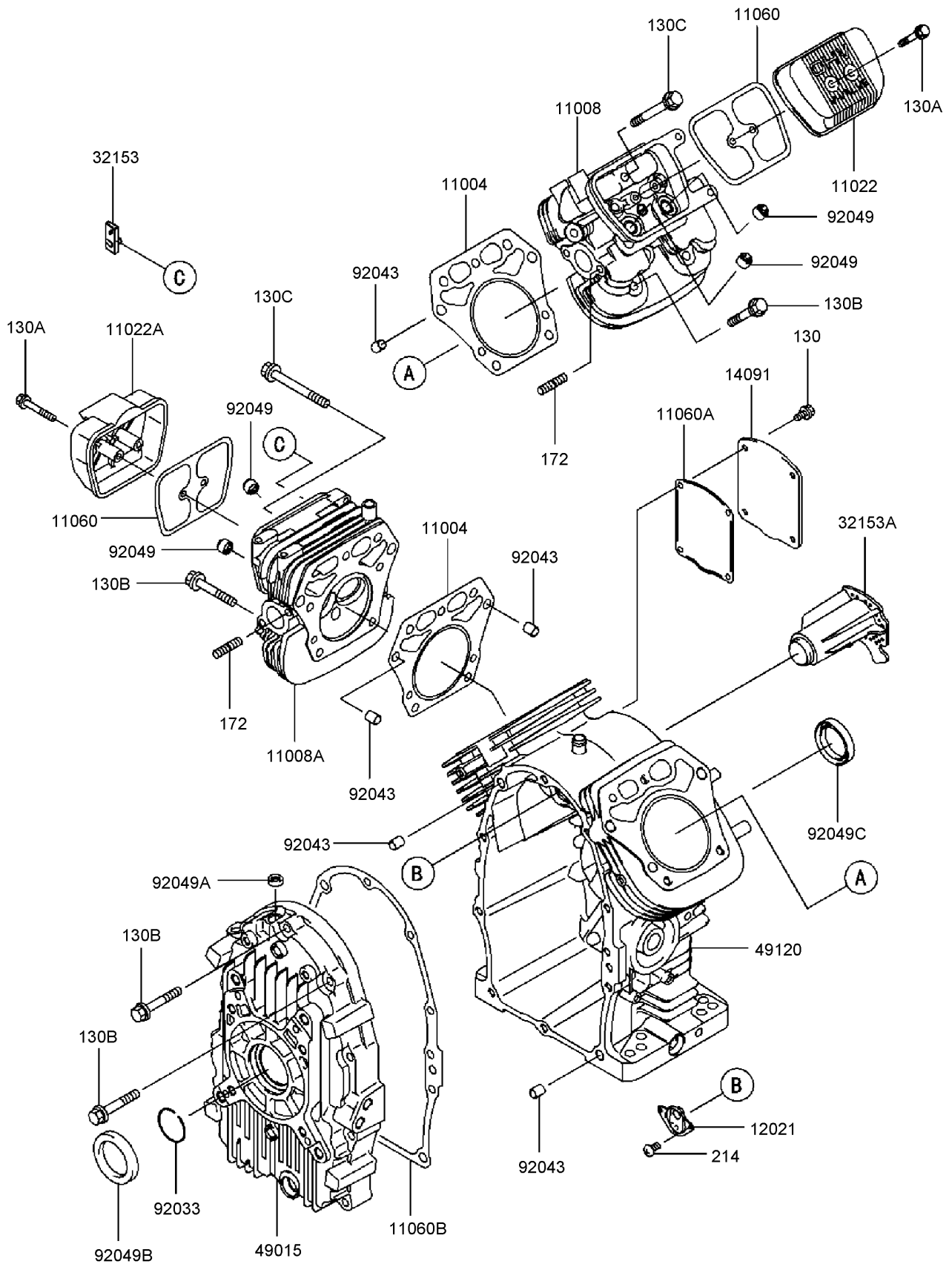


Labels

Kawasaki FH721D-AS08

Ref	Part No.	Qty.	Description				
●56033	56033-7001	1	Label-Manual				
●56070	56070-7001	1	Label-Warning				
●56080	56080-7018	1	Label-Brand				

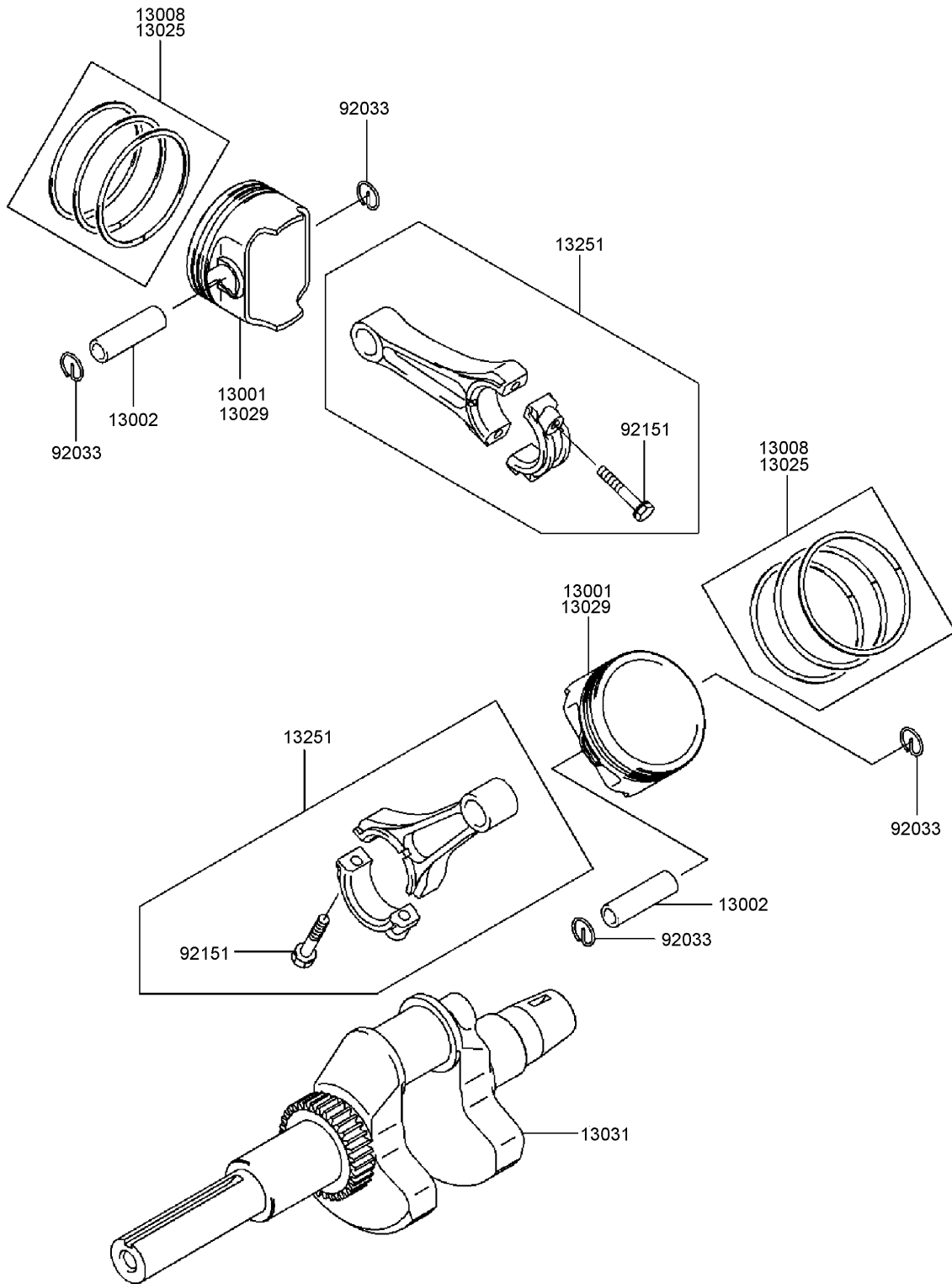
Cylinder/Crankcase Assembly Kawasaki FH721D-AS08



Cylinder/Crankcase Assembly Kawasaki FH721D-AS08

Ref	Part No.	Qty.	Description				
⑨11004	11004-7006	2	Gasket-head				
⑨11008	11008-7012	1	Head-cylinder, No. 2				
⑨11008A	11008-7013	1	Head-cylinder, No. 1				
⑨11022	11022-7002	1	Case-rocker				
⑨11022A	11022-7004	1	Case-rocker				
⑨11060	11060-7013	2	Gasket-Case, Rocker				
⑨11060A	11060-7014	1	Gasket-Breather				
⑨11060B	11060-7023	1	Gasket-Crankcase				
⑨12021	12021-7002	1	Valve Reed ASM				
⑨14091	14091-7004	1	Cover				
⑨32153	32153-7003	1	Pipe				
⑨32153A	32153-7004	1	Pipe				
⑨49015	49015-6256	1	Cover-crankcase				
⑨49120	49120-6137	1	Crankcase				
⑨92033	92033-7004	1	Ring-snap				
⑨92043	92043-7001	6	Pin				
⑨92049	92049-7001	4	Seal-oil (R Vc2 6x11x10.2)				
⑨92049A	92049-7005	1	Seal-oil (So 8x14x5 Hs)				
⑨92049B	92049-7007	1	Seal-oil				
⑨92049C	92049-7010	1	Seal-oil (Sd 35x48x8 R Hs)				
⑨130	130B0612	4	Bolt-Flanged				
⑨130A	130B0640	4	Bolt-Flanged				
⑨130B	130T0850	18	Bolt-Flanged				
⑨130C	130T0875	2	Bolt-Flanged				
⑨172	172G0818	4	Bolt-Stud				
⑨214	214B0408	2	Screw-Pan				

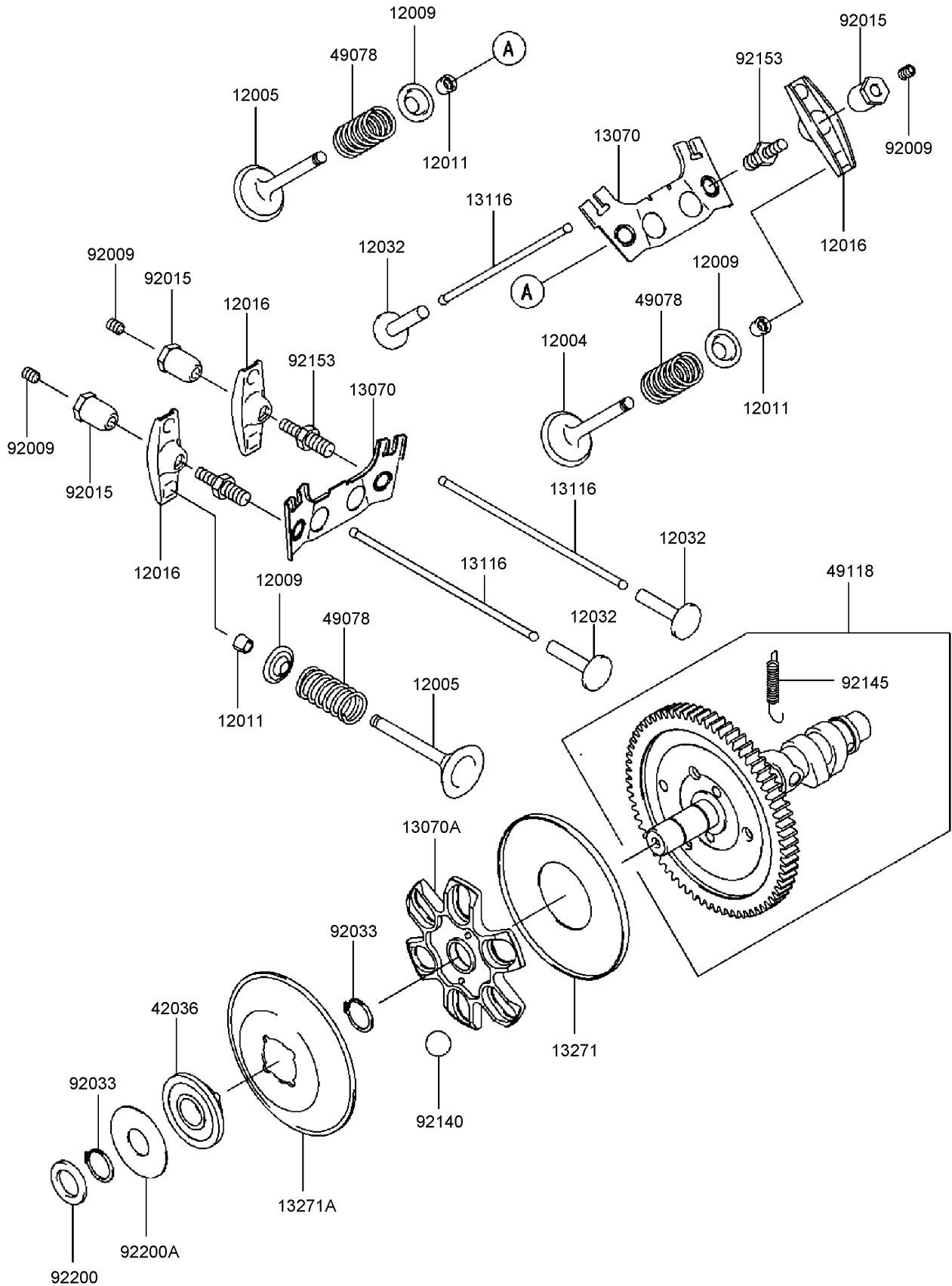
Piston/Crankshaft Assembly Kawasaki FH721D-AS08



Piston/Crankshaft Assembly Kawasaki FH721D-AS08

Ref	Part No.	Qty.	Description				
①13001	13001-7007	2	Piston-engine				
①13002	13002-7001	2	Pin-piston				
①13008	13008-6058	2	Ring Set-piston				
①13025	13025-7002	1	Ring Set-piston (L,0.50)				
①13029	13029-7003	1	Piston-engine (L,0.50)				
①13031	13031-7007	1	Crankshaft				
①13251	13251-7005	2	Connecting Rod ASM				
①92033	92033-7005	4	Ring-snap				
①92151	92151-7017	4	Bolt (6x35)				

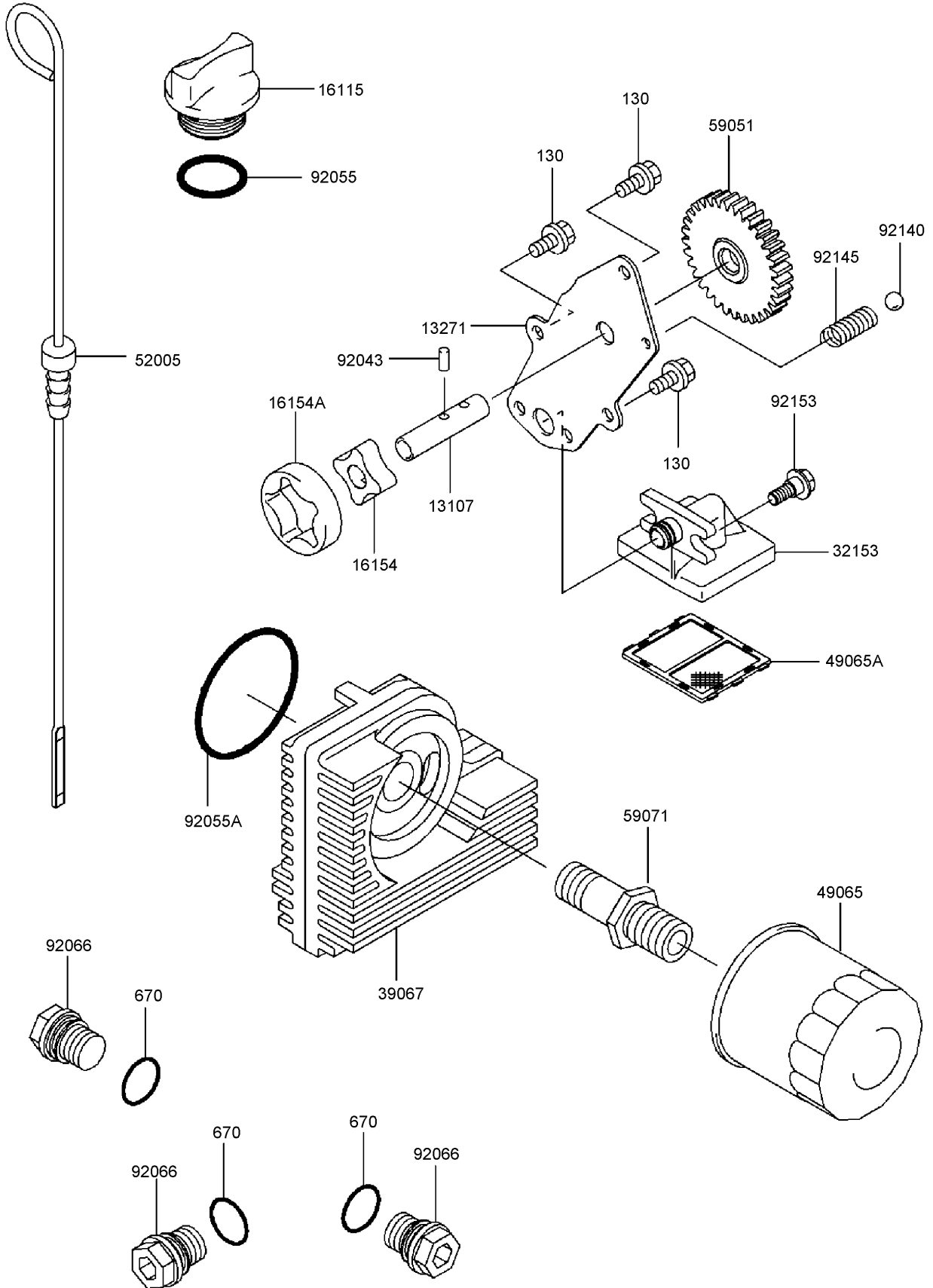
Valve/Camshaft Assembly Kawasaki FH721D-AS08



Valve/Camshaft Assembly Kawasaki FH721D-AS08

Ref	Part No.	Qty.	Description				
④12004	12004-7002	2	Valve-intake				
④12005	12005-7004	2	Valve-exhaust				
④12009	12009-7001	4	Retainer-spring, Valve				
④12011	12011-2056	8	Collet				
④12016	12016-7006	4	Arm-rocker				
④12032	12032-7001	4	Tappet				
④13070	13070-7007	2	Guide				
④13070A	13070-7008	1	Guide				
④13116	13116-7002	4	Rod-push				
④13271	13271-7007	1	Plate				
④13271A	13271-7021	1	Plate-Governor				
④42036	42036-7009	1	Sleeve				
④49078	49078-7002	4	Spring-valve, Engine				
④49118	49118-7007	1	Camshaft				
④92009	92009-2341	4	Screw				
④92015	92015-2253	4	Nut				
④92033	92033-7001	2	Ring-snap				
④92140	92140-7002	6	Ball				
④92145	92145-7001	1	Spring				
④92153	92153-7019	4	Bolt				
④92200	92200-7001	1	Washer				
④92200A	92200-7009	1	Washer (16x42x0.91)				

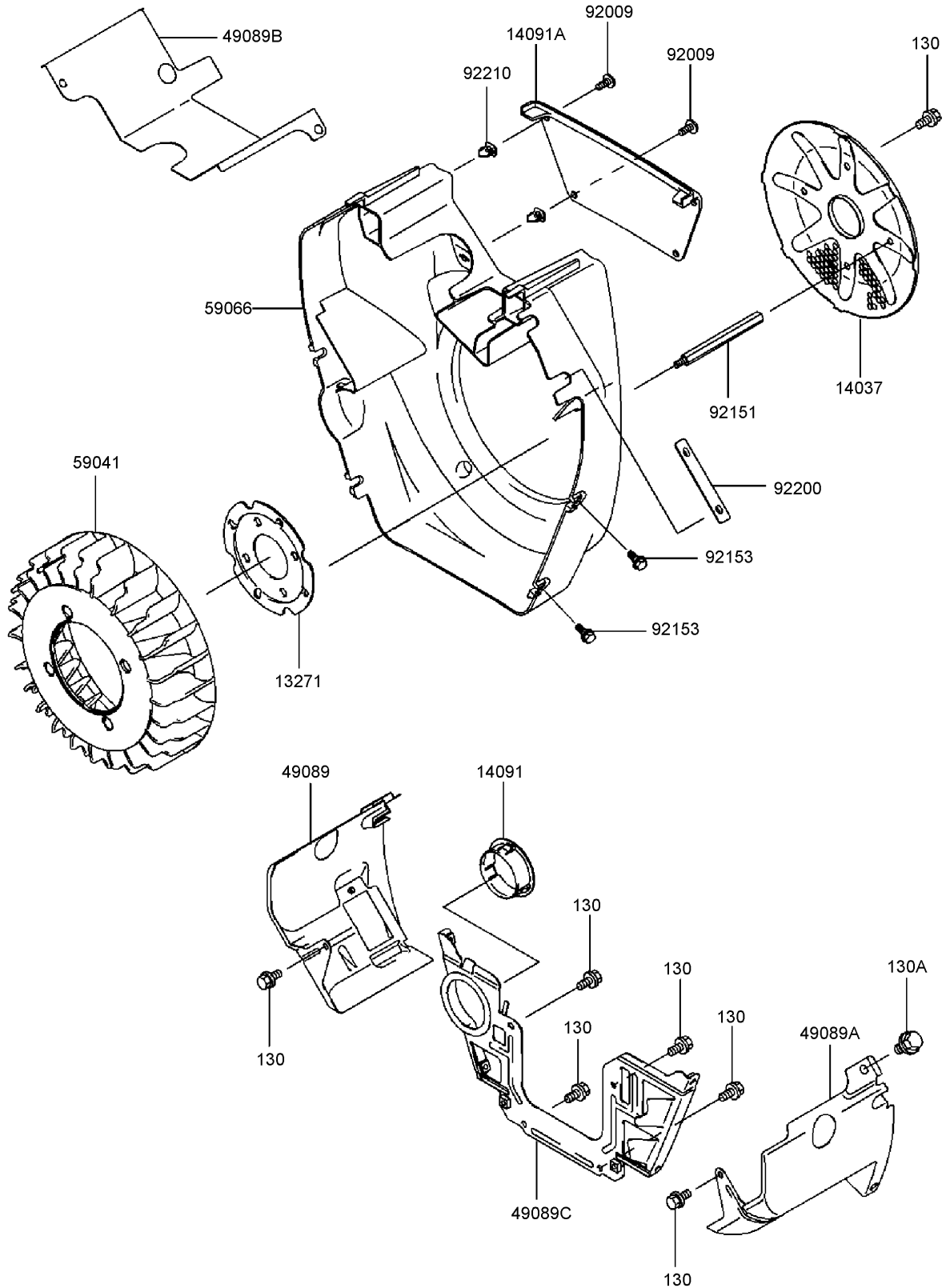
Lubrication Equipment Assembly Kawasaki FH721D-AS08



Lubrication Equipment Assembly Kawasaki FH721D-AS08

Ref	Part No.	Qty.	Description				
①13107	13107-7009	1	Shaft				
①13271	13271-7014	1	Plate				
①16115	16115-7001	1	Cap-filler, Oil				
①16154	16154-2053	1	Rotor-pump ,in				
①16154A	16154-2054	1	Rotor-pump, Out				
①32153	32153-7002	1	Pipe				
①39067	39067-7002	1	Cooler-oil				
①49065	49065-2078	1	Filter-oil				
①49065A	49065-7005	1	Filter-oil				
①52005	52005-7003	1	Gauge				
①59051	59051-7011	1	Gear-spur				
①59071	59071-7009	1	Joint				
①92043	92043-7003	2	Pin				
①92055	92055-7004	1	O-Ring				
①92055A	92055-7006	1	O-Ring (Id=58)				
①92066	92066-7003	3	Plug				
①92140	92140-7003	1	Ball				
①92145	92145-7002	1	Spring				
①92153	92153-7007	2	Bolt				
①130	130B0612	3	Bolt-Flanged				
①670	670D2016	3	O-Ring (16mm)				

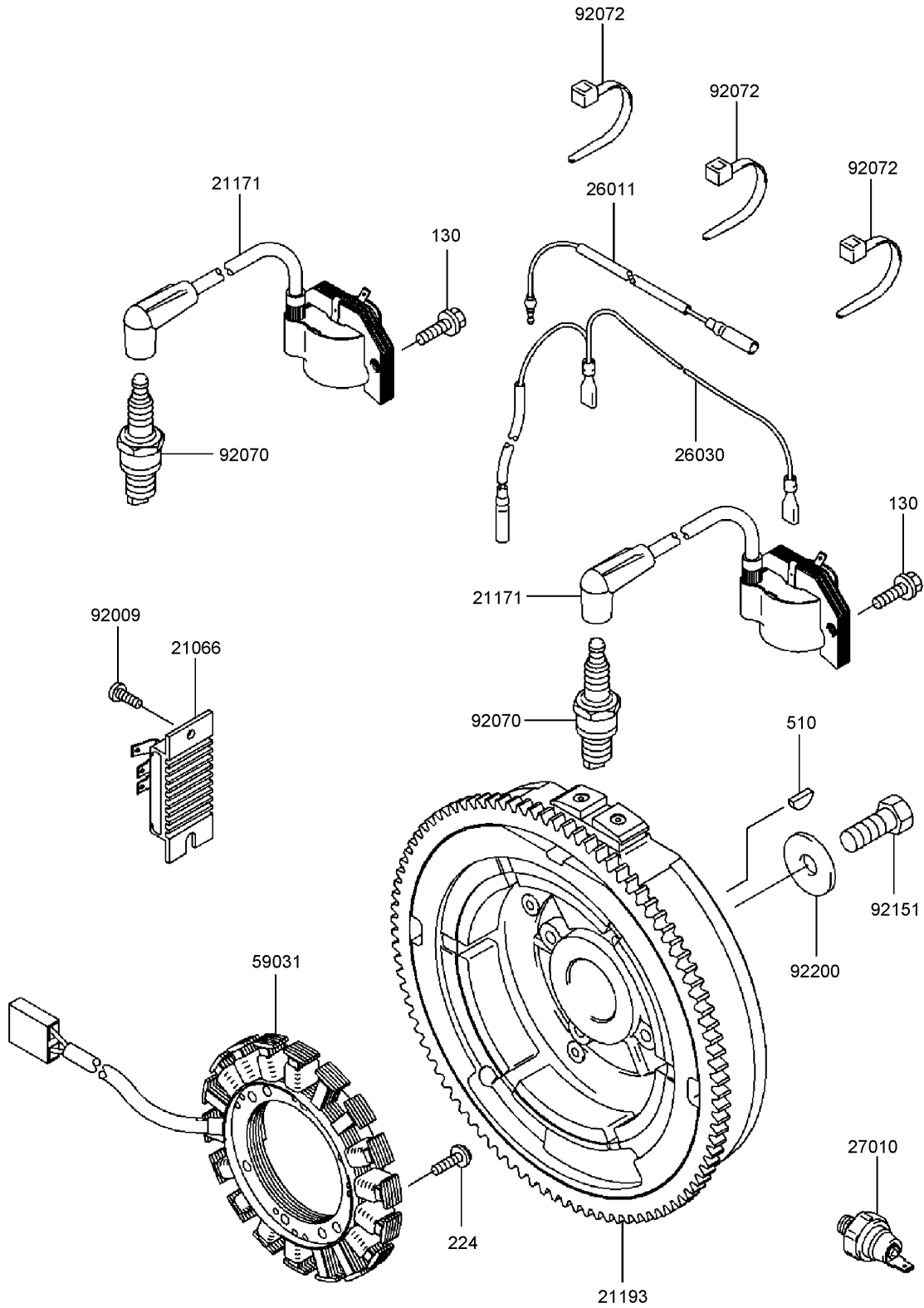
Cooling Equipment Assembly Kawasaki FH721D-AS08



Cooling Equipment Assembly Kawasaki FH721D-AS08

Ref	Part No.	Qty.	Description				
⑤13271	13271-7015	1	Plate				
⑤14037	14037-7014	1	Screen				
⑤14091	14091-7002	1	Cover				
⑤14091A	14091-7005	1	Cover				
⑤49089	49089-7004	1	Shroud-engine				
⑤49089A	49089-7005	1	Shroud-engine				
⑤49089B	49089-7019	1	Shroud-engine				
⑤49089C	49089-7027	1	Shroud-engine				
⑤59041	59041-7004	1	Fan				
⑤59066	59066-7005	1	Housing-fan				
⑤92009	92009-7009	4	Screw				
⑤92151	92151-7018	4	Bolt				
⑤92153	92153-7007	4	Bolt				
⑤92200	92200-7011	1	Washer				
⑤92210	92210-7011	4	Nut				
⑤130	130B0612	10	Bolt-Flanged				
⑤130A	130B0816	2	Bolt-Flanged				

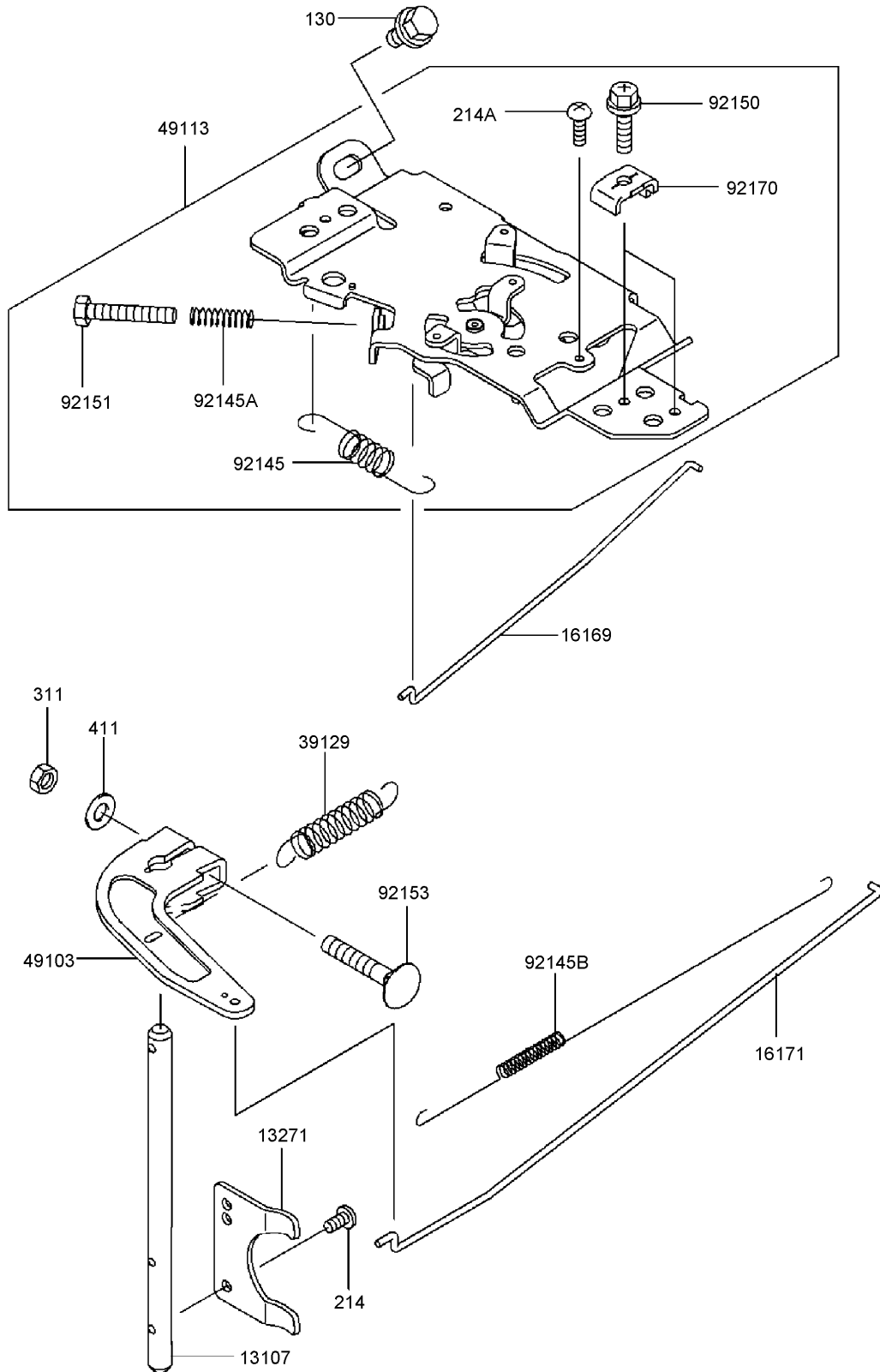
Electric Equipment Assembly Kawasaki FH721D-AS08



Electric Equipment Assembly Kawasaki FH721D-AS08

Ref	Part No.	Qty.	Description				
②1066	21066-7011	1	Regulator-voltage				
②1171	21171-7013	2	Ignition Coil ASM				
②1193	21193-7021	1	Flywheel ASM				
②6011	26011-7008	1	Wire-lead (L=540)				
②6030	26030-7002	1	Harness				
②7010	27010-7001	1	Switch				
⑤9031	59031-7001	1	Coil-charging				
⑨2009	92009-2308	1	Screw				
⑨2070	92070-7004	2	Plug-spark (Bpr4es (Ngk) Solid)				
⑨2072	92072-7003	3	Band				
⑨2151	92151-2097	1	Bolt (12x30)				
⑨2200	92200-7002	1	Washer				
⑩130	130B0620	4	Bolt-Flanged				
⑩224	224B0520	4	Screw-Pan				
⑩510	510A5100	1	Key-Woodruff				

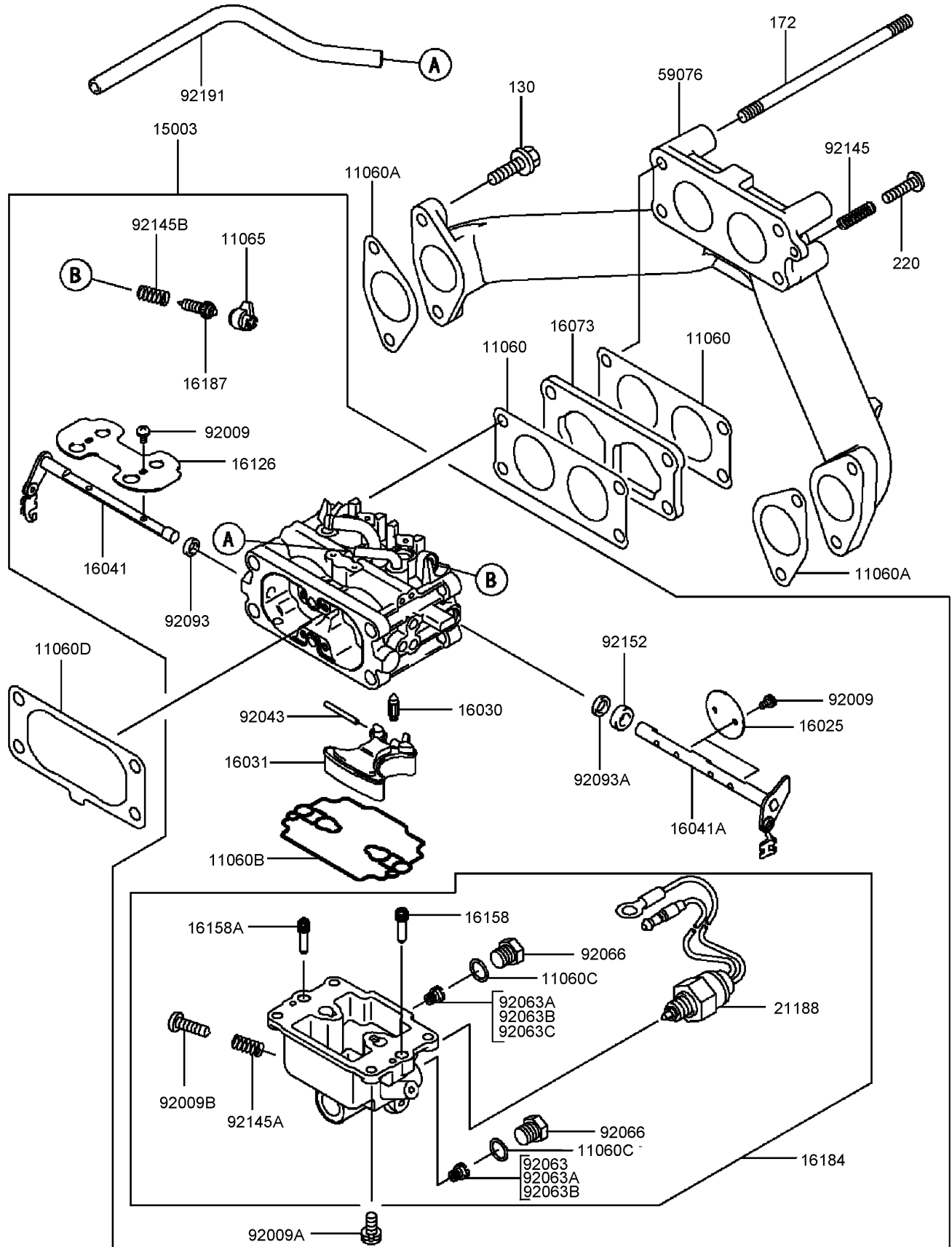
Control Equipment Assembly Kawasaki FH721D-AS08



Control Equipment Assembly Kawasaki FH721D-AS08

Ref	Part No.	Qty.	Description				
①13107	13107-7011	1	Shaft				
①13271	13271-7018	1	Plate				
①16169	16169-7008	1	Link-choke				
①16171	16171-7005	1	Link				
①39129	39129-7012	1	Spring-governor				
①49103	49103-7004	1	Arm-governor				
①49113	49113-7023	1	Panel-control				
①92145	92145-7004	1	Spring				
①92145A	92145-7005	1	Spring				
①92145B	92145-7014	1	Spring				
①92150	92150-2182	2	Bolt (5x18)				
①92151	92151-7014	1	Bolt (5x30)				
①92153	92153-7005	1	Bolt (6x35)				
①92170	92170-7001	2	Clamp				
①130	130B0612	2	Bolt-Flanged				
①214	214B0408	2	Screw-Pan				
①214A	214B0412	1	Screw-Pan				
①311	311B0600	1	Nut-Hex				
①411	411b0600	1	Washer-Plain				

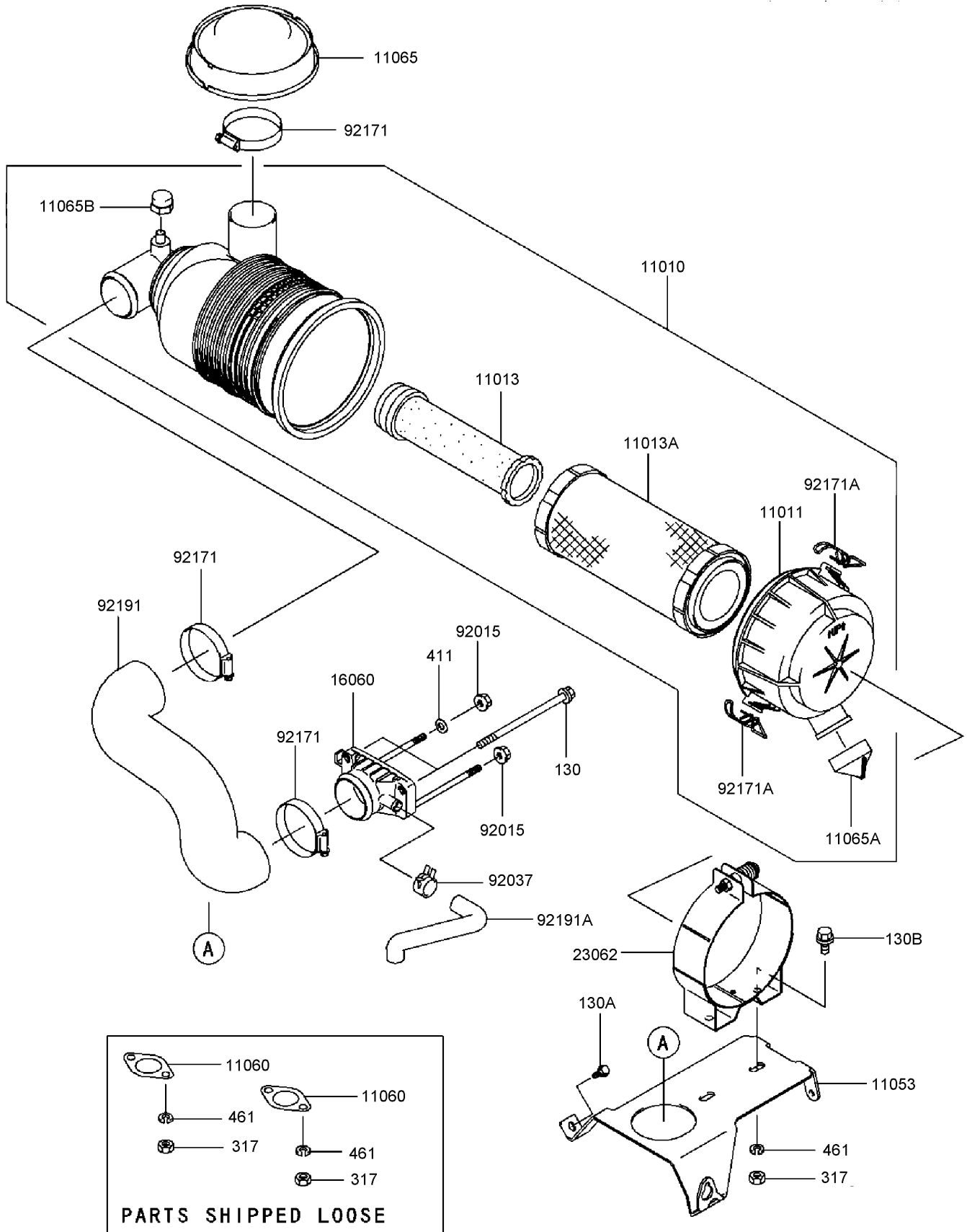
Carburetor Assembly Kawasaki FH721D-AS08



Carburetor Assembly Kawasaki FH721D-AS08

Ref	Part No.	Qty.	Description				
⑨11060	11060-7010	2	Gasket-Carburetor				
⑨11060A	11060-7011	2	Gasket-Manifold				
⑨11060B	11060-7018	1	Gasket-Chamber, Float				
⑨11060C	11060-7019	2	Gasket-Plug, Main				
⑨11060D	11060-7025	1	Gasket-Filter, Air				
⑨11065	11065-7004	2	Cap-Limiter				
⑨15003	15003-7088	1	Carburetor ASM				
⑨16025	16025-7002	2	Valve-throttle				
⑨16030	16030-7002	1	Valve-float				
⑨16031	16031-7001	1	Float				
⑨16041	16041-7011	1	Shaft-carburetor				
⑨16041A	16041-7012	1	Shaft-carburetor				
⑨16073	16073-7003	1	Insulator				
⑨16126	16126-7004	1	Valve-Choke				
⑨16158	16158-7004	1	Jet-slow, No. 54				
⑨16158A	16158-7010	1	Jet-slow, No. 52				
⑨16184	16184-7016	1	Float Chamber ASM				
⑨16187	16187-7003	2	Needle-jet				
⑨21188	21188-7001	1	Solenoid				
⑨59076	59076-7006	1	Manifold-intake				
⑨92009	92009-7003	6	Screw				
⑨92009A	92009-7005	4	Screw				
⑨92009B	92009-7006	1	Screw-Drain				
⑨92043	92043-7004	1	Pin-Float				
⑨92063	92063-7012	1	Jet-main, No. 108				
⑨92063A	92063-7013	2	Jet-main, No. 105				
⑨92063B	92063-7014	2	Jet-main, No. 102				
⑨92063C	92063-7045	1	Jet-main, No. 112				
⑨92066	92066-7008	2	Plug-Jet, Main				
⑨92093	92093-7001	1	Seal (D=5.9)				
⑨92093A	92093-7002	1	Seal (D=6.9)				
⑨92145	92145-7005	1	Spring				
⑨92145A	92145-7011	1	Spring				
⑨92145B	92145-7013	2	Spring				
⑨92152	92152-7001	1	Collar				
⑨92191	92191-7010	1	Tube (4.76x7.94x160)				
⑨130	130B0620	4	Bolt-Flanged				
⑨172	172G06105	2	Bolt-Stud				
⑨220	220B0520	1	Screw-Pan				

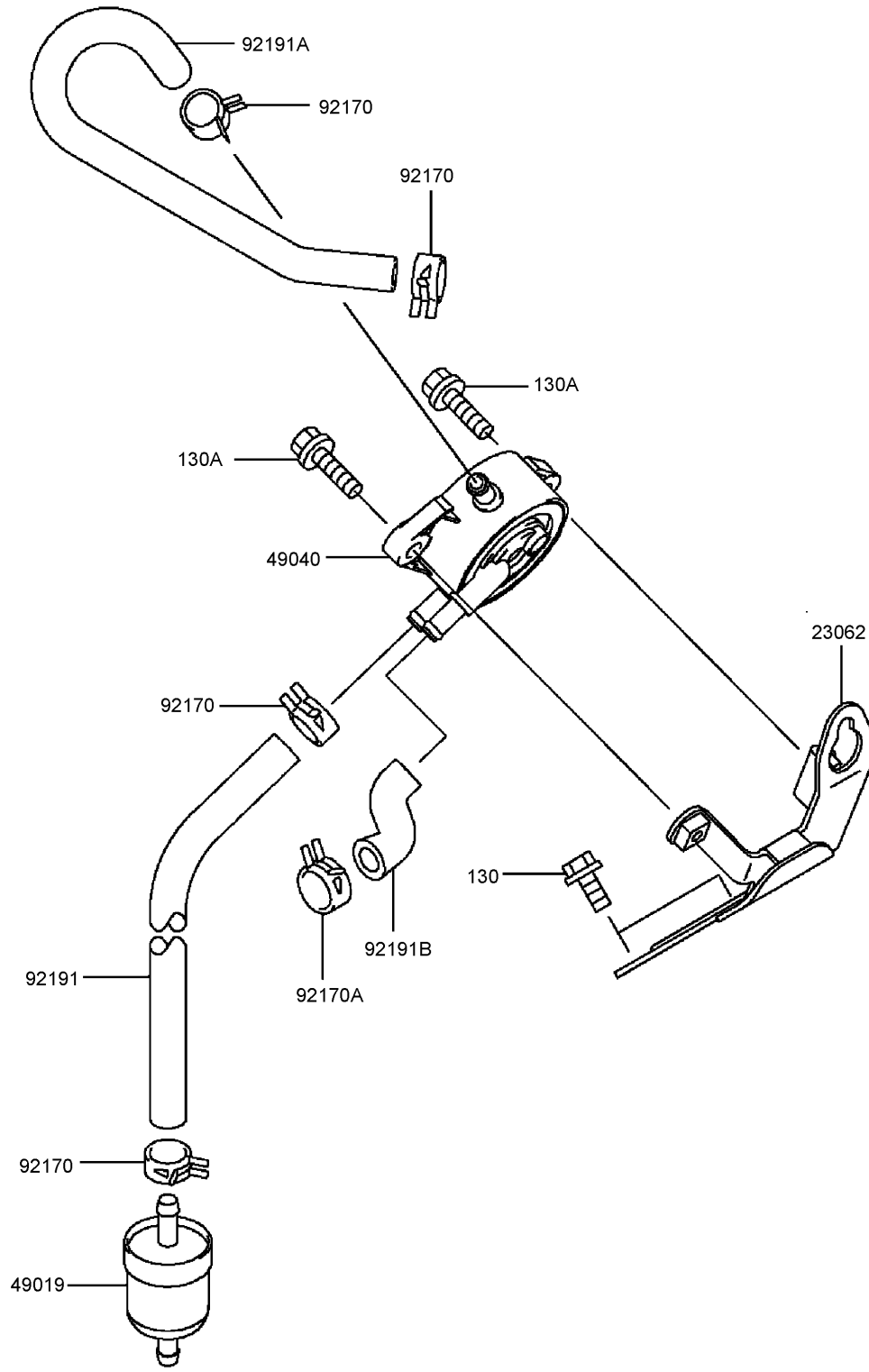
Air Filter/Muffler Assembly Kawasaki FH721D-AS08



Air Filter/Muffler Assembly Kawasaki FH721D-AS08

Ref	Part No.	Qty.	Description				
①11010	11010-7011	1	Air Filter ASM				
①11011	11011-7014	1	Case-filter, Air				
①11013	11013-7019	1	Element-filter, Air				
①11013A	11013-7020	1	Element-filter, Air				
①11053	11053-7002	1	Bracket				
①11060	11060-7016	2	Gasket-Muffler				
①11065	11065-7006	1	Cap				
①11065A	11065-7008	1	Cap				
①11065B	11065-7009	1	Cap				
①16060	16060-7006	1	Pipe-intake				
①23062	23062-7009	1	Bracket				
①92015	92015-1193	2	Nut				
①92037	92037-2079	1	Clamp				
①92171	92171-7007	3	Clamp				
①92171A	92171-7009	2	Clamp				
①92191	92191-7031	1	Tube-Intake				
①92191A	92191-7032	1	Tube-Breather				
①130	130B06105	2	Bolt-Flanged				
①130A	130B0612	2	Bolt-Flanged				
①130B	130B0816	2	Bolt-Flanged				
①317	317R0800	6	Nut-Hex, Small				
①411	411b0600	1	Washer-Plain				
①461	461F0800	6	Washer-Spring				

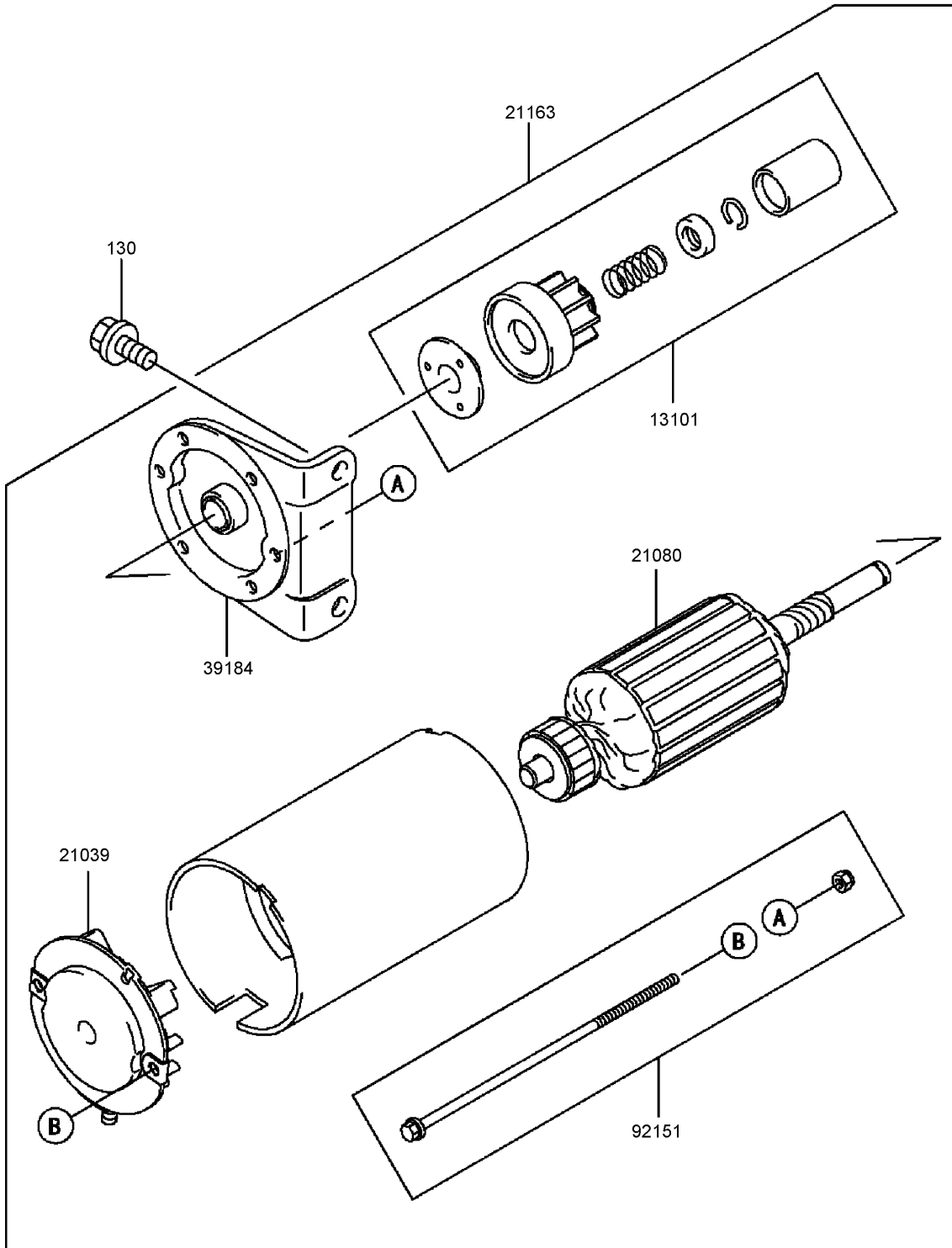
Fuel Tank/Valve Assembly Kawasaki FH721D-AS08



Fuel Tank/Valve Assembly Kawasaki FH721D-AS08

Ref	Part No.	Qty.	Description				
③23062	23062-7004-9H	1	Bracket				
③49019	49019-7001	1	Filter-fuel				
③49040	49040-7001	1	Pump-fuel				
③92170	92170-2088	4	Clamp				
③92170A	92170-7003	1	Clamp				
③92191	92191-7003	1	Tube (6.35x12.7x160)				
③92191A	92191-7012	1	Tube				
③92191B	92191-7027	1	Tube				
③130	130B0616	2	Bolt-Flanged				
③130A	130B0620	2	Bolt-Flanged				

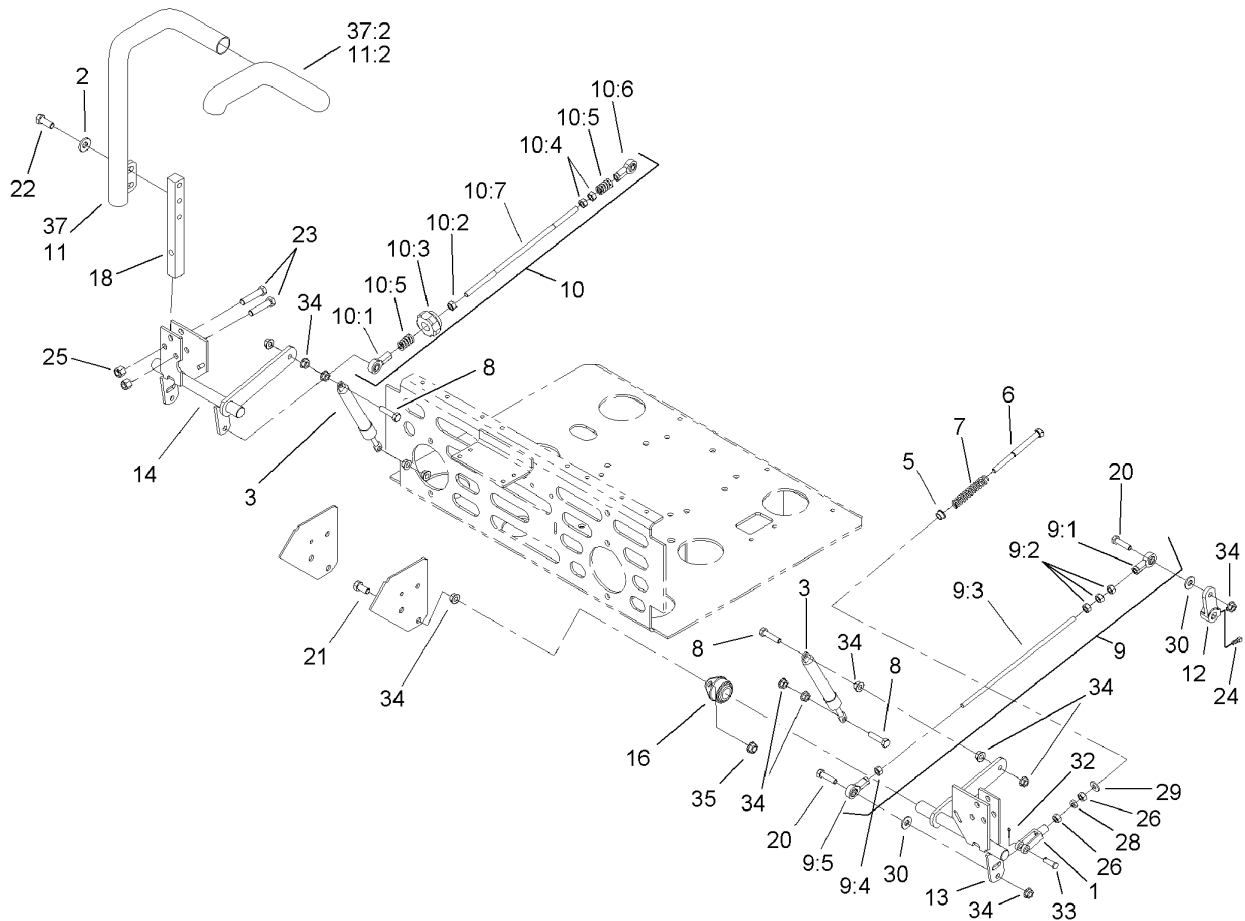
Starter Assembly Kawasaki FH721D-AS08



Starter Assembly

Kawasaki FH721D-AS08

Ref	Part No.	Qty.	Description				
①13101	13101-7003	1	Gear ASM				
①21039	21039-7004	1	Brush				
①21080	21080-7001	1	Armature				
①21163	21163-7010	1	Starter-electric				
①39184	39184-7004	1	Bracket ASM				
①92151	92151-7013	1	Bolt				
①130	130B0816	2	Bolt-Flanged				



Steering Control Assembly

Ref	Part No.	Qty.	Description
1	1-303105	2	Yoke-Adjustable
2	98-5975	4	Washer-Belleville
3	103-4079	2	Damper-Control, Motion
5	1-603735	2	Bushing-Flanged
6	1-603737	2	Bolt-Return, Neutral
7	1-603807	2	Spring-Return, Neutral
8	1-403180	4	Screw-HH
9	103-4331	1	Tracking Rod ASM
9:1	1-543017	1	Balljoint-RH
9:2	3219-2	3	Nut-Hex
9:3	103-3064	1	Link-Rod, Tracking
9:4	1-804524	1	Nut
9:5	1-633152	1	Balljoint-Thread, LH
10	103-4330	1	Tracking Rod ASM
10:1	1-543017	1	Balljoint-RH
10:2	3219-2	1	Nut-Hex
10:3	103-3060	1	Knob-Tracking
10:4	1-804524	2	Nut
10:5	1-323245	2	Spring-Compression
10:6	1-633152	1	Balljoint-Thread, LH
10:7	103-3064	1	Link-Rod, Tracking
11	108-7238	1	RH Lever ASM
11:2	106-9987	1	Grip-Control, Motion
12	1-632208	2	Arm-Control, Pump

Ref	Part No.	Qty.	Description
13	103-4781	1	Control-Motion, LH
14	103-4782	1	Control-Motion, RH
16	1-633102	4	Bearing-Flange, Side
18	103-0407	2	Arm-Shaft, Control
20	322-6	4	Screw-HH
21	323-4	8	Screw-HH
22	323-6	4	Screw-HH
23	323-9	6	Screw-HH
24	1-803022	2	Screw-Set
25	3296-39	6	Nut-Lock, NI
26	3219-2	4	Nut-Hex
28	3220-2	2	Nut-Jam
29	3256-2	2	Washer-Flat
30	3256-3	4	Washer-Flat
32	3272-5	2	Pin-Cotter
33	1-808280	2	Pin-Clevis
34	32128-20	16	Nut-HF
35	3290-357	8	Nut-HHF
37	107-7237	1	RH Lever ASM
37:2	106-9987	1	Grip-Control, Motion

Attachments and Accessories

For 74245 - Z555 Z Master, With 60in TURBO FORCE Side Discharge Mower

Product Name	Model/Part
1.25in Spark Arrester Kit 105-1672
Blade-Mid Flow, 20.5 105-7715-03
Blade-Lo Flow, 20.5 105-7716-03
Blade-Hi Flow 105-7718-03
Blade-Recycler, 20.5 105-7777-03
Blade-Atomic, 20.5 105-8777-03
60in Recycler Kit 107-1611
Deluxe Suspension Seat 107-1891
Suspension Kit for Standard Seat 107-1892
Filter Minder Gauge 99-4664
Hitch Kit 99-8925

NOTES

