



Z587L Z Master[®] With 72in TURBO FORCE Side Discharge Mower

Model No. 74252 - 250000001 and up.

Parts Catalog

Ordering Replacement Parts

To order replacement parts, please supply the part number, the quantity, and the description of each part desired.

Understanding Reference Numbers

Each Identified part in an illustration has a reference number. The reference number for a part also appears in the parts list, along with other information about the part.

This catalog uses two special reference number formats, one to indicate parts in a service assembly and another to indicate the quantity of a given part in an illustration.

Service Assembly Reference Numbers

Parts in service assemblies have reference numbers in the form a:b. The a represents the reference number of the entire service assembly and the b represents a sequential number unique to each part within the service assembly.

For example, a wheel assembly might be identified by reference number 6, the tire by 6:1, the valve by 6:2, and the wheel by 6:3. When you order the assembly identified by reference number 6, you receive all parts identified by reference numbers 6:1, 6:2, and 6:3. However, you may also order any part individually. Reference numbers of this type appear in illustrations and in part lists.

Reference Numbers Indicating Quantity

In an illustration, if a reference number indicates more than one part, the reference number has the form nX y. The n represents the quantity of the part, the X is the multiplication symbol, and the y represents the reference number.

For example, in an illustration, the reference number 2X 37 means that two of the parts identified by reference number 37 are indicated.

Contents

Description	Page	Description	Page
Front Frame Assembly 3	Rubber Deflector Assembly No. 106-3249 28
Castor and Wheel Assembly 5	Lever Assembly No. 106-3242 29
Main Frame Assembly 6	Cylinder/Crankcase Assembly Kawasaki FD750D-AS03 30
Brake and Wheel Hub Assembly 7	Piston/Crankshaft Assembly Kawasaki FD750D-AS03 31
Steering Control Assembly 8	Valve/Camshaft Assembly Kawasaki FD750D- AS03 32
Hydraulic System Assembly 9	Lubrication Equipment Assembly Kawasaki FD750D-AS03 33
Seat and Roll-Over-Protection-System Assembly 11	Cooling Equipment Assembly Kawasaki FD750D-AS03 34
Suspension Seat Assembly No. 106-9988 12	Electric Equipment Assembly Kawasaki FD750D-AS03 35
Roll-Over-Protection-System Assembly No. 108- 1097 13	Control Equipment Assembly Kawasaki FD750D-AS03 36
Deck Connection Assembly 14	Carburetor Assembly Kawasaki FD750D-AS03 37
Drive Idler Assembly 15	Air Filter/Muffler Assembly Kawasaki FD750D- AS03 38
Z-Stand Assembly 16	Fuel Tank/Fuel Valve Assembly Kawasaki FD750D-AS03 39
Engine and Clutch Assembly 17	Starter Assembly Kawasaki FD750D-AS03 40
Air Cleaner Assembly No. 95-5805 18	Attachments and Accessories List 41
Cooling System Assembly 19		
Hood Assembly 20		
Cooling Mounting Frame Assembly 21		
Fuel Tank Assembly 22		
Electrical Components Assembly 23		
Deck Assembly 24		
Spindle Assembly No. 106-3217 26		
Deck and Decal Assembly No. 107-1625 27		

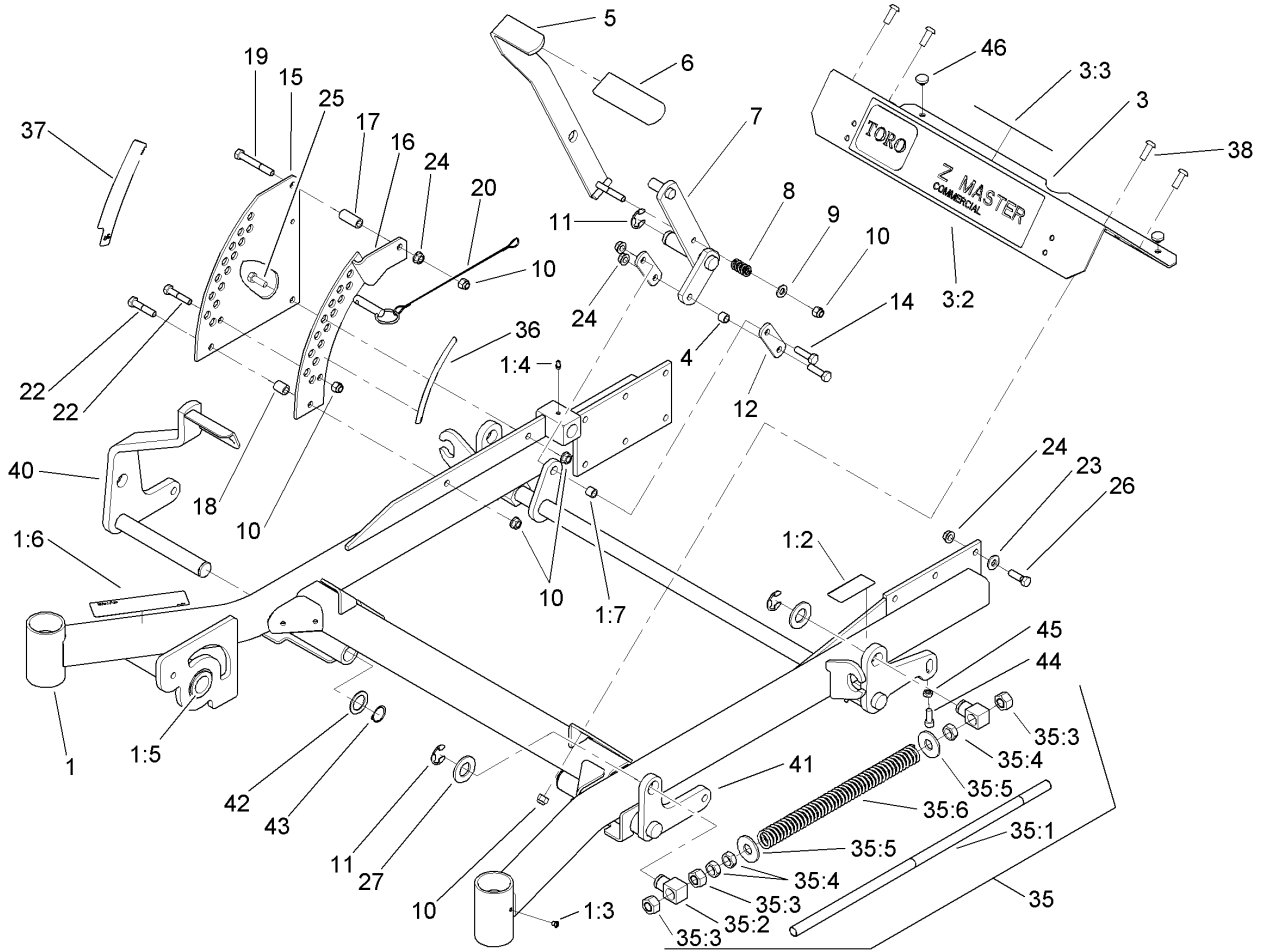
Part Description Abbreviations

Part descriptions in this catalog may include the following abbreviations.

AR. as required	INC. incorporated
ASM. assembly	LH. left hand
CARR. carriage	NI. nylon insert
DEG. degrees	PPH. phillips pan head
FH. flat head	PTH. phillips truss head
GA. gauge	PTO. power take off
HF. hex flange	RH. right hand
HH. hex head	SFH. slotted fillister head
HHF. hex head flange	SHH. slotted hex head
HHFTF. hex head flange thread forming	SHWH. slotted hex washer head
HJ. hex jam	SPH. slotted pan head
HLH. hex lag head	SQH. square head
HOC. height-of-cut	SRH. slotted round head
HS. hex	STD. standard
HSBH. hex socket button head	TAP. self tapping
HSFH. hex socket flat head	TTH. torx truss head
HSH. hex socket head	WH. wing head
HWH. hex washer head	
HWHTF. hex washer head thread forming	
HYD. hydraulic	

Footnotes

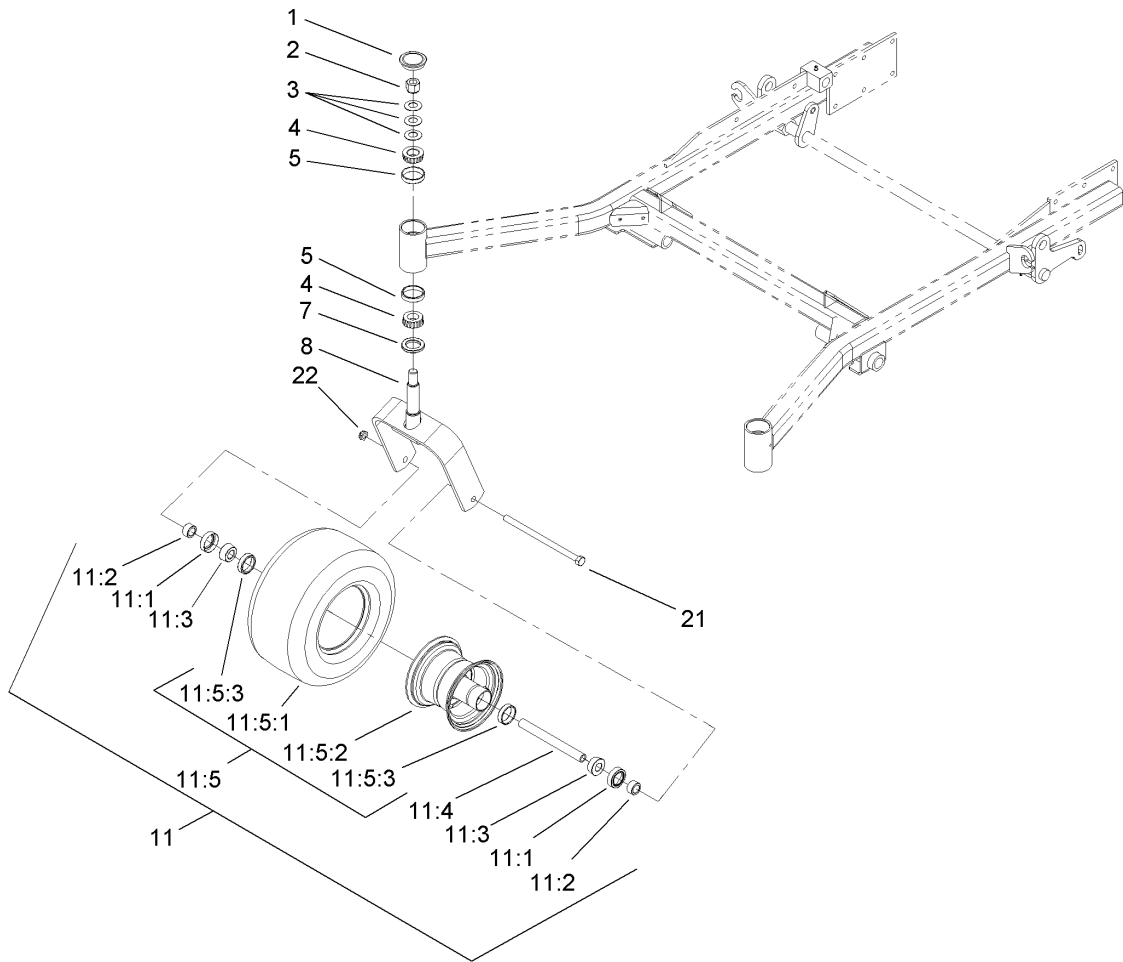
- ❶ Not illustrated
- ❷ Not serviced separately
- ❸ Obtain Parts From Kawasaki



Front Frame Assembly

Ref	Part No.	Qty.	Description
1	106-8999	1	Frame ASM
1:2	107-1857	1	Decal-Brake, Parking
1:3	1-811010	2	Plug
1:4	302-19	5	Fitting-Grease
1:5	94-1291	2	Bushing
1:6	104-7759	1	Decal-Warning
1:7	103-1918	1	Bushing
3	106-9981	1	Front Floorpan ASM
3:2	106-7451	1	Decal
3:3	107-2112	1	Decal-Warning
4	103-1918	1	Bushing
5	103-2083-03	1	Lift Lever ASM
6	1-633295	1	Grip-Lever, Lift
7	103-2064-03	1	Arm-Lift, Deck
8	1-633325	1	Spring-Compression
9	3256-24	1	Washer-Flat
10	3296-39	9	Nut-Lock, NI
11	32151-103	5	Ring-Snap
12	1-633068	2	Arm-Lift, Deck
14	323-29	2	Screw-HH
15	1-633889-01	1	Plate-Lift, Deck
16	1-632899-01	1	Plate-Lift, Deck
17	1-633082	1	Bushing-Lever, Lift
18	1-633080	1	Bushing-Lever, Lift

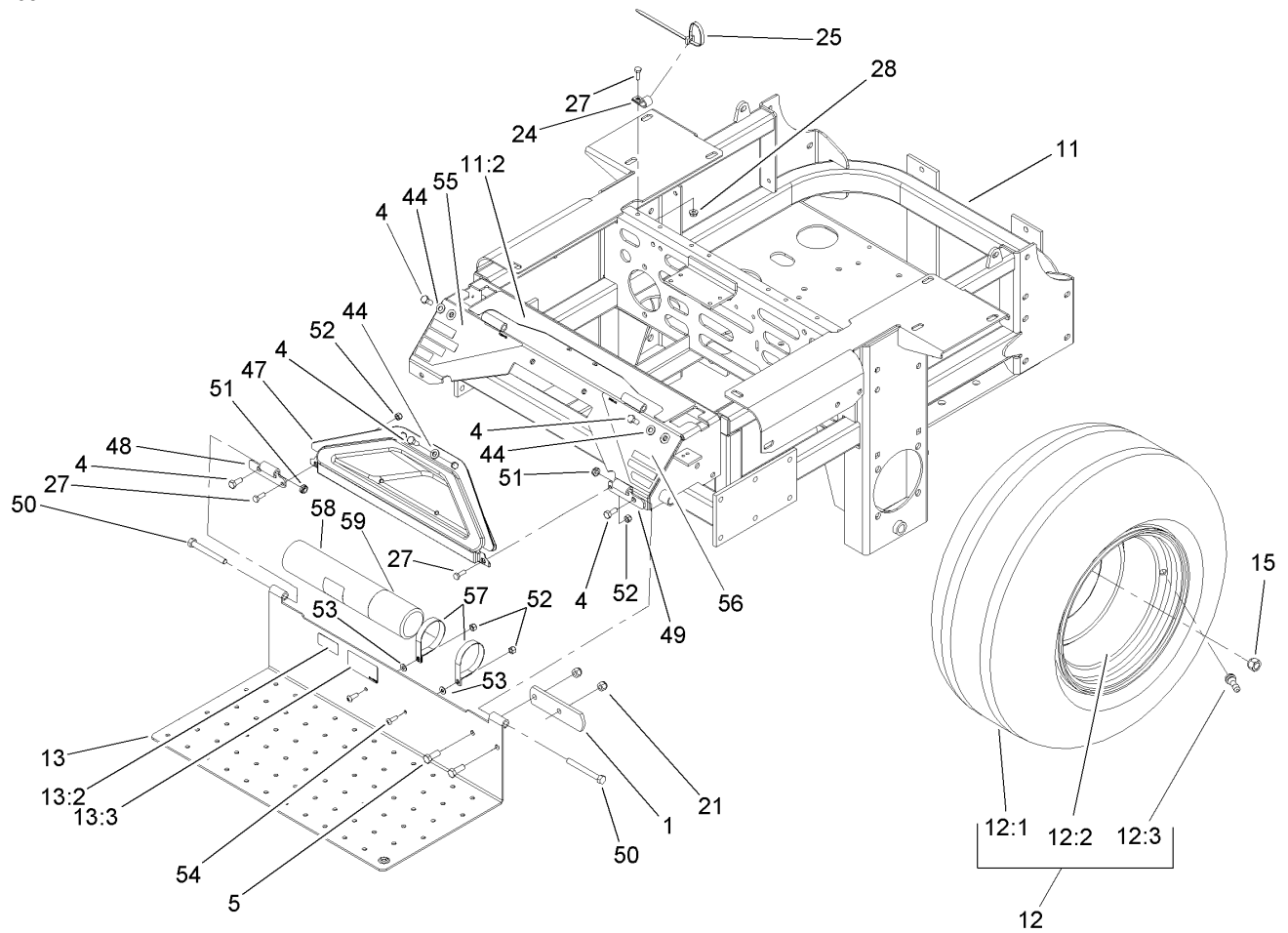
Ref	Part No.	Qty.	Description
19	323-13	1	Screw-HH
20	106-9951	1	Hitch Pin ASM
22	323-9	2	Screw-HH
23	98-5975	12	Washer-Belleville
24	3290-357	15	Nut-HHF
25	323-6	1	Screw-HH
26	323-7	12	Screw-HH
27	3256-29	4	Washer-Flat
35		2	Front Frame Spring ASM
35:1	1-633096	1	Rod-Lift, Deck
35:2	1-633441	2	Swivel-Deck Mount, Rear
35:3	3217-11	3	Nut-Hex
35:4	3218-6	3	Nut-Jam
35:5	3256-7	2	Washer-Flat
35:6	1-643015	1	Spring-Support, Deck
36	107-1861	1	Decal-Height, Deck
37	107-1860	1	Decal-Height, Deck
38	3274-94	4	Screw-HSBH
40	106-8983-01	1	RH Deck Lift ASM
41	106-8984-01	1	LH Deck Lift ASM
42	1-523157	2	Washer-Spacer
43	32151-29	2	Ring-Retaining
44	3274-18	2	Screw-HSH
45	3218-2	2	Nut-Jam



Castor and Wheel Assembly

Ref	Part No.	Qty.	Description
1	103-4882	2	Cap-Grease
2	3296-51	2	Nut-Lock, NI
3	1-633508	6	Washer-Bellville
4	254-94	4	Bearing-Cone, Tapered
5	254-72	4	Bearing-Cup, Tapered
7	1-543511	2	Seal-Grease
8	103-1474-01	2	Fork-Caster
11	1-644251	2	Caster Wheel ASM
11:1	1-633580	2	Seal-Bearing
11:2	1-633581	2	Spacer-Bearing
11:3	1-633585	2	Bearing-Cone, Taper
11:4	1-633959	1	Spacer-Caster, Front
11:5		1	Wheel And Tire ASM
11:5:1	1-523009	1	Tire
11:5:2	1-633987	1	Wheel
11:5:3	1-633584	2	Bearing-Cup
21	325-39	2	Screw-HH
22	3296-45	2	Nut-Lock, NI

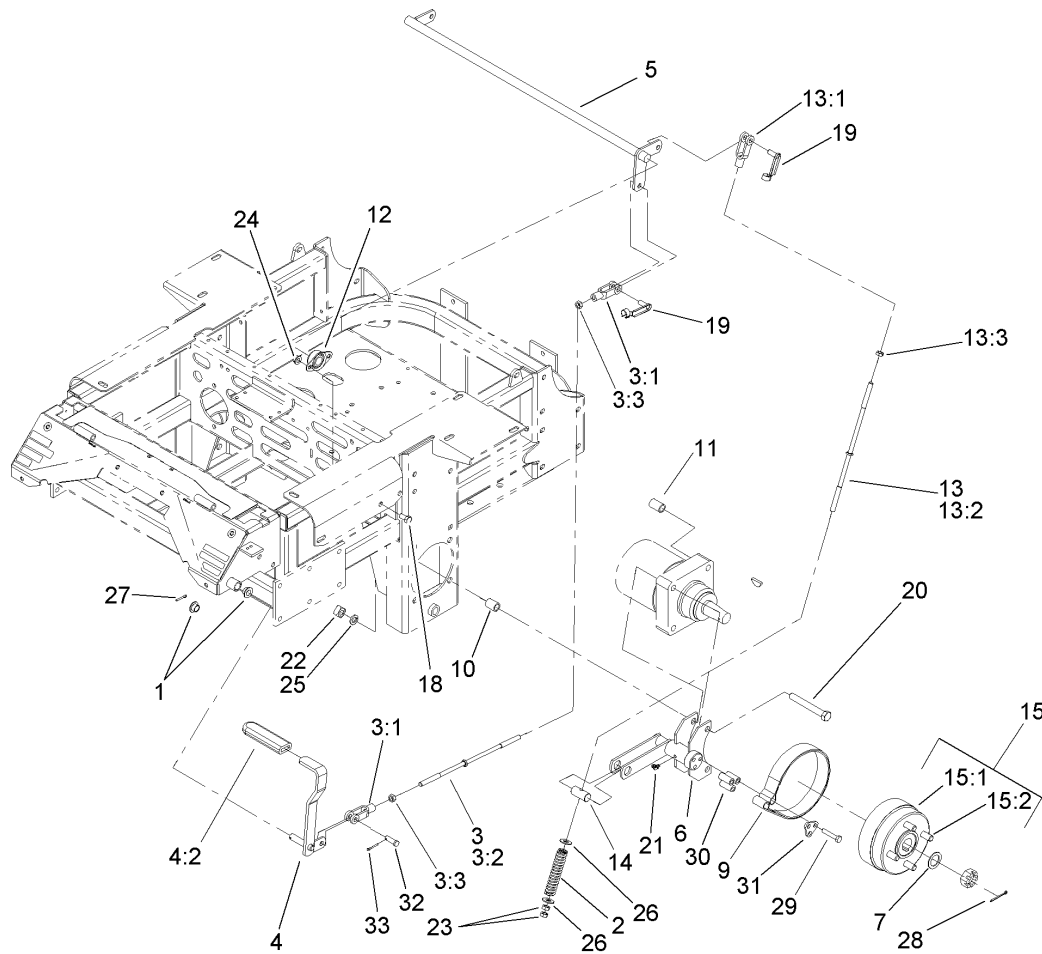
--	--	--	--



Main Frame Assembly

Ref	Part No.	Qty.	Description
1	1-633964-03	1	Stop-Brake, Park
4	322-43	6	Screw-HH
5	323-6	2	Screw-HH
11	108-1095	1	Main Frame ASM
11:2	107-8076	1	Decal-Console, Top
12	1-633970	2	Wheel And Tire ASM
12:1	1-633993	1	Tire
12:2	1-633992	1	Wheel
12:3	232-27	1	Stem-Valve
13	107-1858	1	Floorpan
13:2	98-4387	1	Decal-Protection, Ear
13:3	107-1864	1	Decal-Location, Manual
15	242-50	8	Nut-Lug
21	3296-39	2	Nut-Lock, NI
24	1-513762	1	Clip-Loom
25	1-303335	1	Tie-Plastic
27	321-4	3	Screw-HH
28	32128-33	1	Nut-HF
44	3256-70	6	Washer-Flat
47	106-7498	1	Pocket
48	106-7488-03	1	Hinge-Floorpan, LH
49	106-7489-03	1	Hinge-Floorpan, RH
50	323-20	2	Screw-HH
51	3296-59	2	Nut-Lock, NI

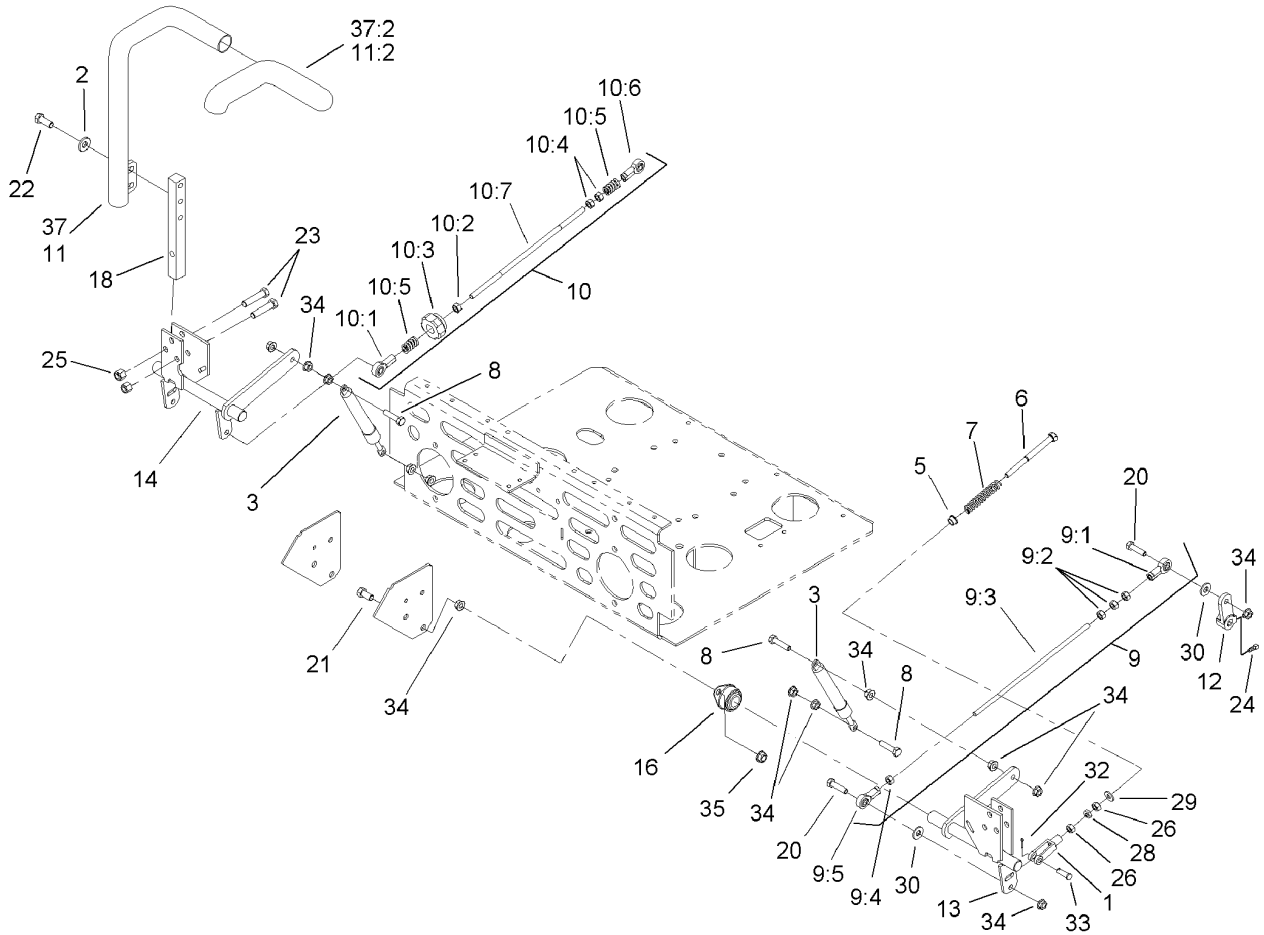
Ref	Part No.	Qty.	Description
52	3296-42	4	Nut-Lock, NI
53	3256-63	2	Washer-Flat
54	3258-166	2	Screw-Prh
55	106-9989	1	Decal-Warning
56	106-7492	1	Decal-Danger
57	107-1865	2	R-Clamp
58	104-7050	1	Housing-Manual
59	104-7048	1	Cap-Housing



Brake and Wheel Hub Assembly

Ref	Part No.	Qty.	Description
1	1-513140	2	Bearing-Control
2	1-633454	2	Spring-Brake
3	103-4332	1	Brake Rod And Yoke ASM
3:1	1-633131	2	Yoke-Linkage, Brake
3:2	1-633477	1	Rod-Brake
3:3	3219-3	2	Nut-Hex
4	1-634500	1	Brake Lever ASM
4:2	1-633268	1	Grip-Lever, Brake
5	1-632217-03	1	Shaft-Brake
6	103-0354-03	2	Bracket-Brake ASM
7	1-523157	2	Washer-Spacer
9	103-0355	2	Band-Brake
10	1-633060	4	Spacer-Wheel, Short
11	1-633062	4	Spacer-Wheel, Long
12	1-633102	2	Bearing-Flange, Side
13	103-4333	2	Brake Rod And Yoke ASM
13:1	1-633131	1	Yoke-Linkage, Brake
13:2	1-633477	1	Rod-Brake
13:3	3219-3	1	Nut-Hex
14	1-633144	2	Pin-Trunion
15	103-0590	2	Hub And Wheel ASM
15:1	103-0589	1	Wheel Hub ASM
15:2	1-633926	4	Stud-Wheel
18	323-4	4	Screw-HH

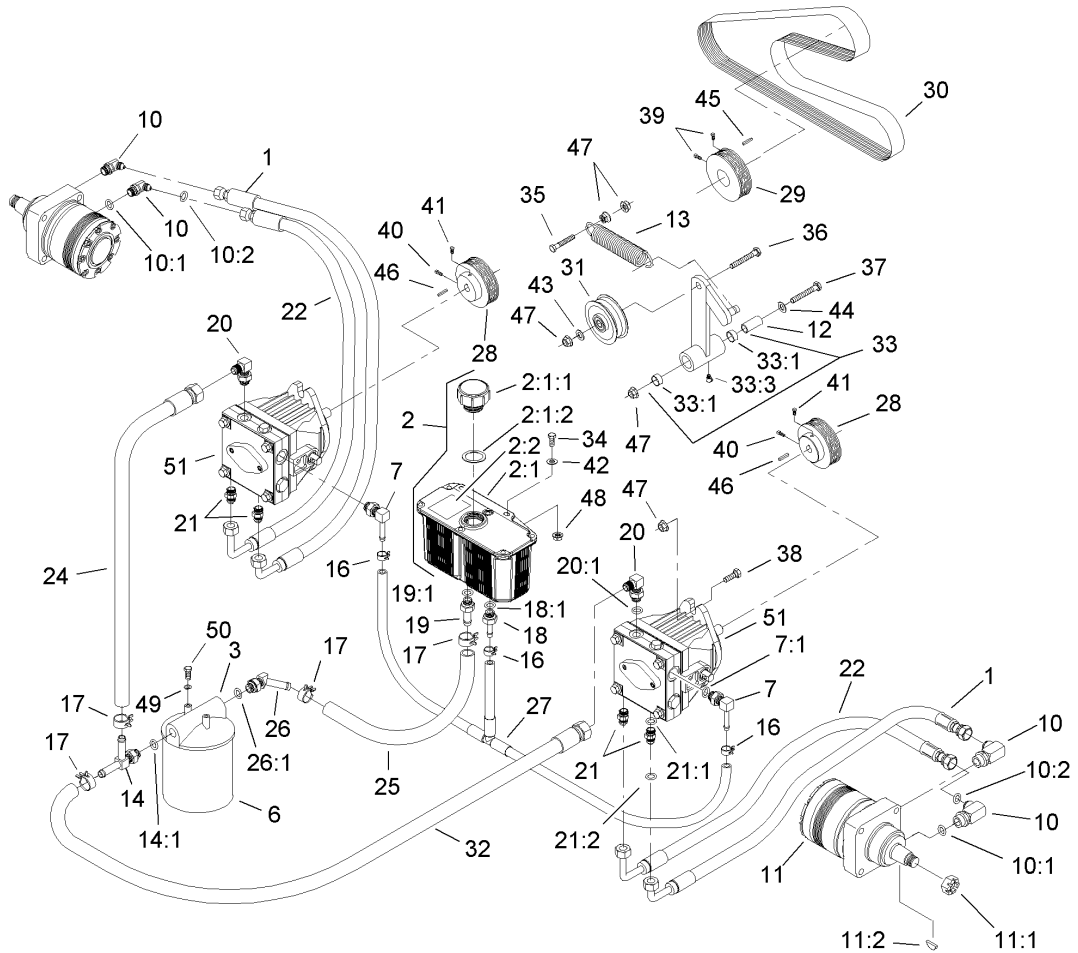
Ref	Part No.	Qty.	Description
19	103-2399	3	Pin-Spring, Clevis
20	325-20	8	Screw-HH
21	302-19	2	Fitting-Grease
22	103-0131	8	Nut-Square
23	3219-3	4	Nut-Hex
24	3290-357	4	Nut-HHF
25	3253-7	8	Washer-Lock
26	3256-4	4	Washer-Flat
27	3272-10	1	Pin-Cotter
28	1-806800	2	Pin-Cotter
29	322-9	6	Screw-HH
30	103-0384	6	Spacer
31	103-0374	2	Retainer-Band, Brake
32	1-808285	1	Pin-Clevis
33	3272-10	1	Pin-Cotter



Steering Control Assembly

Ref	Part No.	Qty.	Description
1	1-303105	2	Yoke-Adjustable
2	98-5975	4	Washer-Belleville
3	103-4079	2	Damper-Control, Motion
5	1-603735	2	Bushing-Flanged
6	1-603737	2	Bolt-Return, Neutral
7	1-603807	2	Spring-Return, Neutral
8	1-403180	4	Screw-HH
9		1	Tracking Rod ASM
9:1	1-543017	1	Balljoint-RH
9:2	3219-2	3	Nut-Hex
9:3	103-3064	1	Link-Rod, Tracking
9:4	1-804524	1	Nut
9:5	1-633152	1	Balljoint-Thread, LH
10		1	Tracking Rod ASM
10:1	1-543017	1	Balljoint-RH
10:2	3219-2	1	Nut-Hex
10:3	103-3060	1	Knob-Tracking
10:4	1-804524	2	Nut
10:5	1-323245	2	Spring-Compression
10:6	1-633152	1	Balljoint-Thread, LH
10:7	103-3064	1	Link-Rod, Tracking
11	108-7237	1	LH Lever ASM
11:2	106-9987	1	Grip-Control, Motion
12	1-632208	2	Arm-Control, Pump

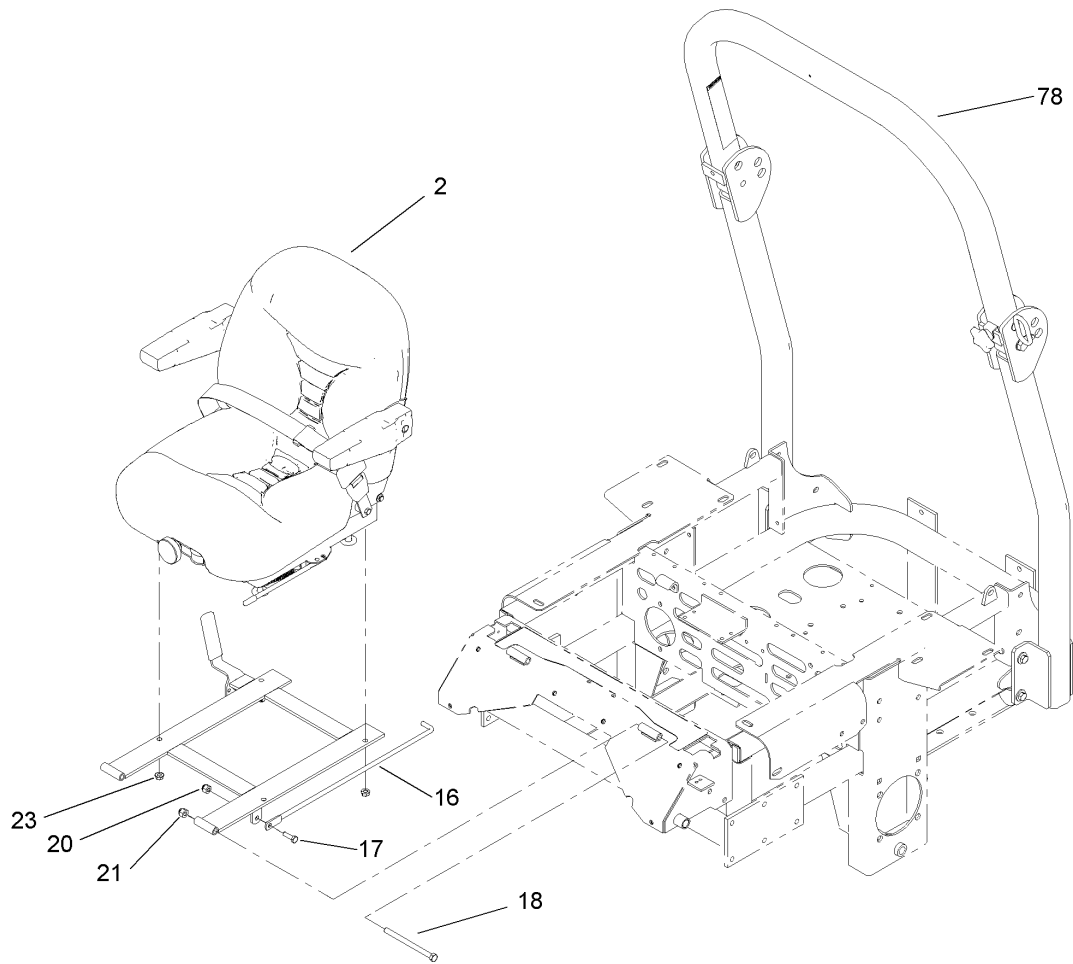
Ref	Part No.	Qty.	Description
13	103-4781	1	Control-Motion, LH
14	103-4782	1	Control-Motion, RH
16	1-633102	4	Bearing-Flange, Side
18	103-0407	2	Arm-Shaft, Control
20	322-6	4	Screw-HH
21	323-4	8	Screw-HH
22	323-6	4	Screw-HH
23	323-9	6	Screw-HH
24	1-803022	2	Screw-Set
25	3296-39	6	Nut-Lock, NI
26	3219-2	4	Nut-Hex
28	3220-2	2	Nut-Jam
29	3256-2	2	Washer-Flat
30	3256-3	4	Washer-Flat
32	3272-5	2	Pin-Cotter
33	1-808280	2	Pin-Clevis
34	32128-20	16	Nut-HF
35	3290-357	8	Nut-HHF
37	108-7238	1	RH Lever ASM
37:2	106-9987	1	Grip-Control, Motion



Hydraulic System Assembly

Ref	Part No.	Qty.	Description
1	103-3734	2	HYD Hose ASM
2	103-1947	1	HYD Reservoir ASM
2:1		1	Reservoir-HYD
2:1:1	103-1948	1	Cap-Reservoir, HYD
2:1:2	103-1949	1	Gasket-Cap
2:2	1-523552	1	Decal-Tank, HYD
3	104-7836	1	Head-Filter
6	1-633752	1	Filter-Hyd, Winter
6	1-633750	1	Filter-HYD
7	103-1799	2	Elbow-90 DEG
7:1	237-42	1	O-Ring
10	1-633786	4	Fitting-90 DEG
10:1	237-80	1	O-Ring
10:2	1-603992	1	O-Ring
11	103-6988	2	Motor-Wheel
11:1	1-809036	1	Nut-HH
11:2	3257-42	1	Key-Woodruff
11:99	1-000139	1	Bearing Kit
11:99	1-000099	1	Seal Kit
11:99	103-2748	1	Drive Link Kit
12	1-603384	1	Bushing-Pivot, Idler
13	103-3330	1	Spring-Extension
14	103-1828	1	Adapter-Run, Tee
14:1	237-42	1	O-Ring

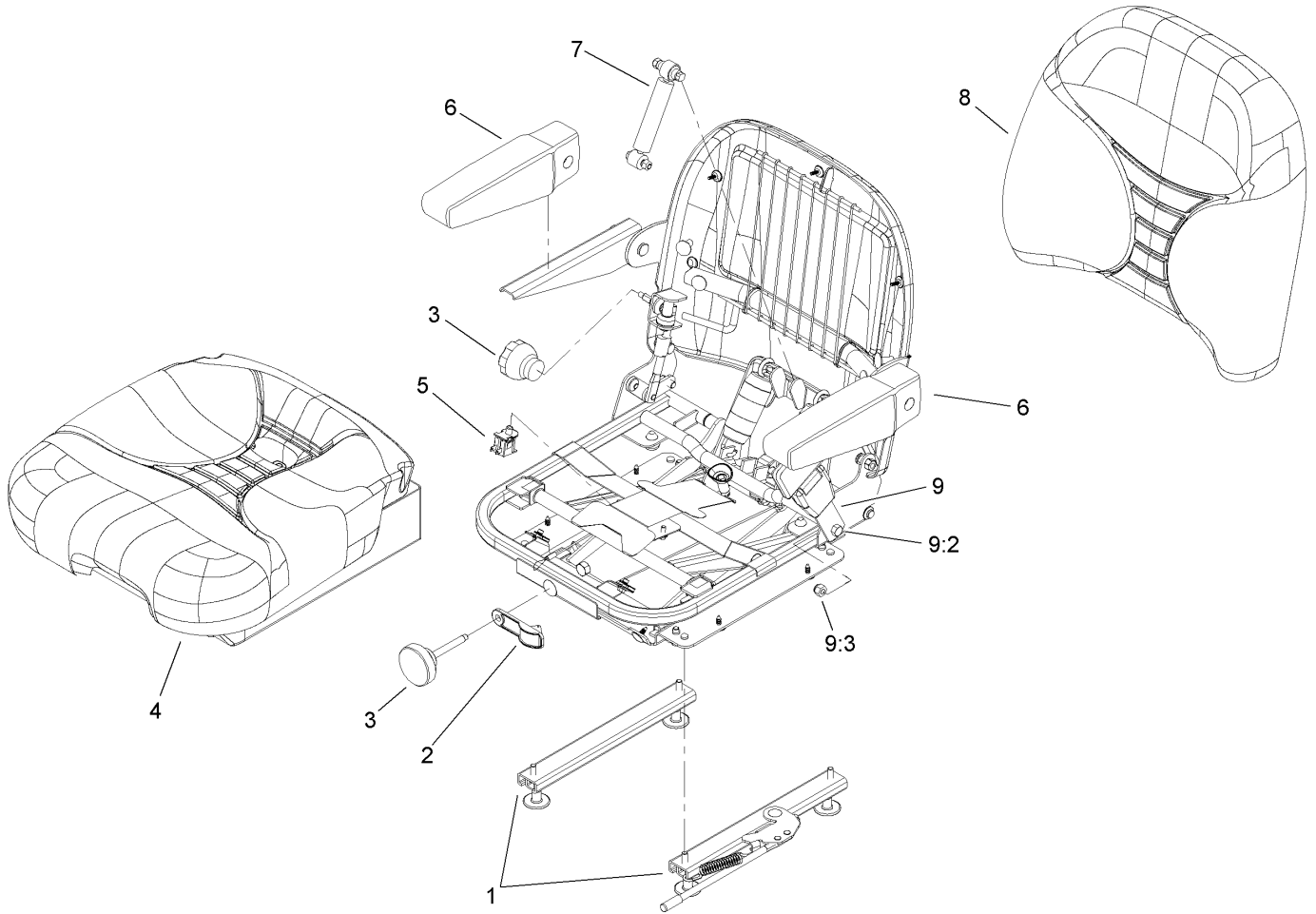
Ref	Part No.	Qty.	Description
16	103-1716	3	Clamp-Hose
17	103-1988	4	Clamp-Hose
18	103-1801	1	Adapter-Straight
18:1	237-42	1	O-Ring
19	103-1912	1	Adapter-Straight
19:1	237-42	1	O-Ring
20	103-1802	2	Fitting-Hyd, 90 DEG
20:1	1-603921	1	O-Ring
21	1-603990	4	Fitting-Straight
21:1	1-603920	1	O-Ring
21:2	1-603992	1	O-Ring
22	103-1863	2	Hose-Lower
24	103-1826	1	HYD Hose ASM
25	103-1808	1	Hose-HYD
26	103-1807	1	Elbow-45 DEG
26:1	237-42	1	O-Ring
27	103-1806	1	HYD Hose ASM
28	103-6907	2	Sheave
29	1-633567	1	Sheave
30	103-7445	1	Belt-V
31	1-633167	1	Sheave-Idler
32	103-1827	1	HYD Hose ASM
33	1-634277	1	Bearing Arm ASM
33:1	1-513034	2	Sleeve-Bearing



Seat and Roll-Over-Protection-System Assembly

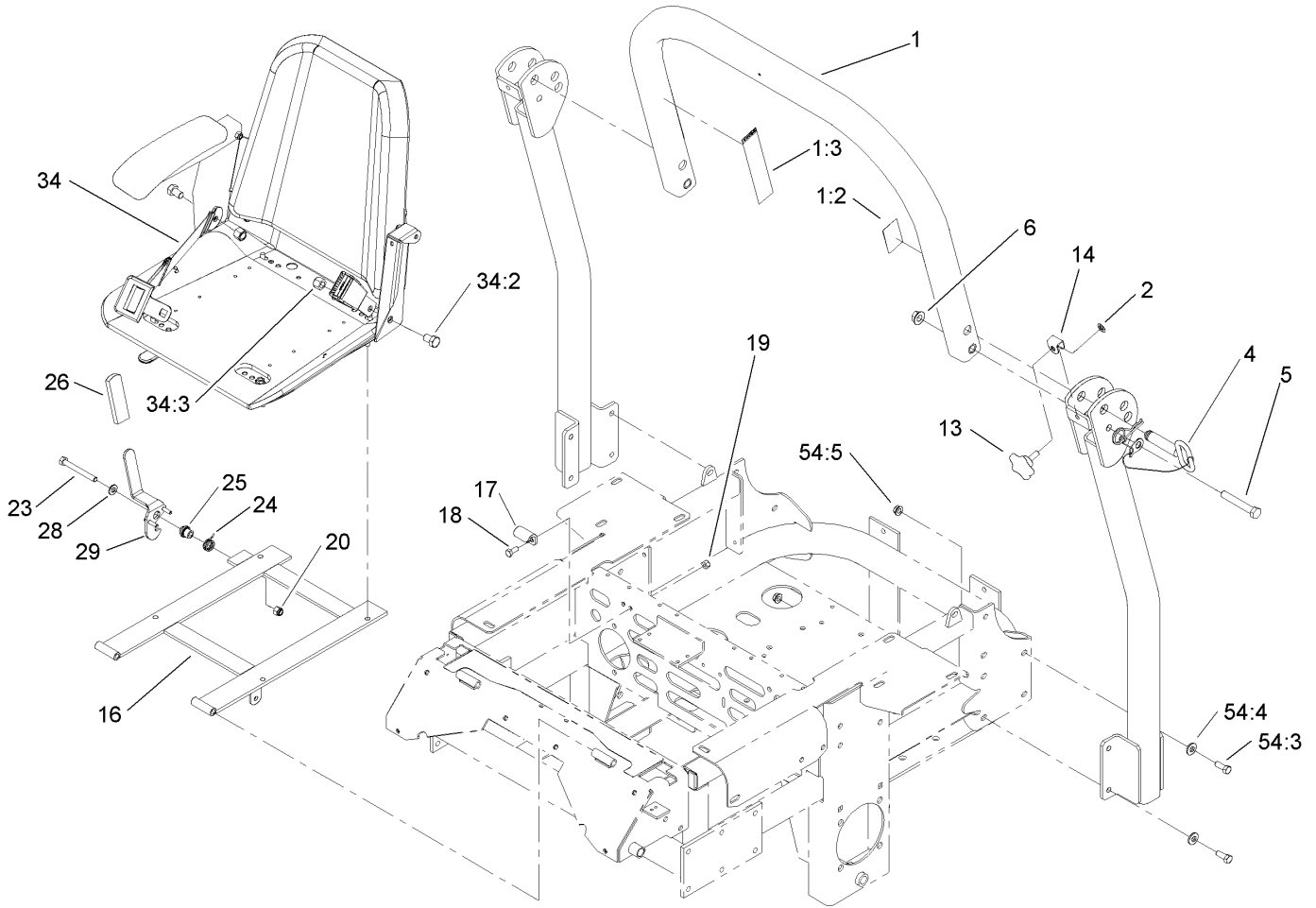
Ref	Part No.	Qty.	Description
2	106-9988	1	Seat-Suspension
16	1-633293	1	Rod-Holdup, Seat
17	322-5	1	Screw-HH
18	323-39	2	Screw-HH
20	3296-29	3	Nut-Lock, NI
21	3296-39	3	Nut-Lock, NI
23	32128-20	4	Nut-HF
78	108-1097	1	Rops ASM

--	--	--	--



Suspension Seat Assembly No. 106-9988

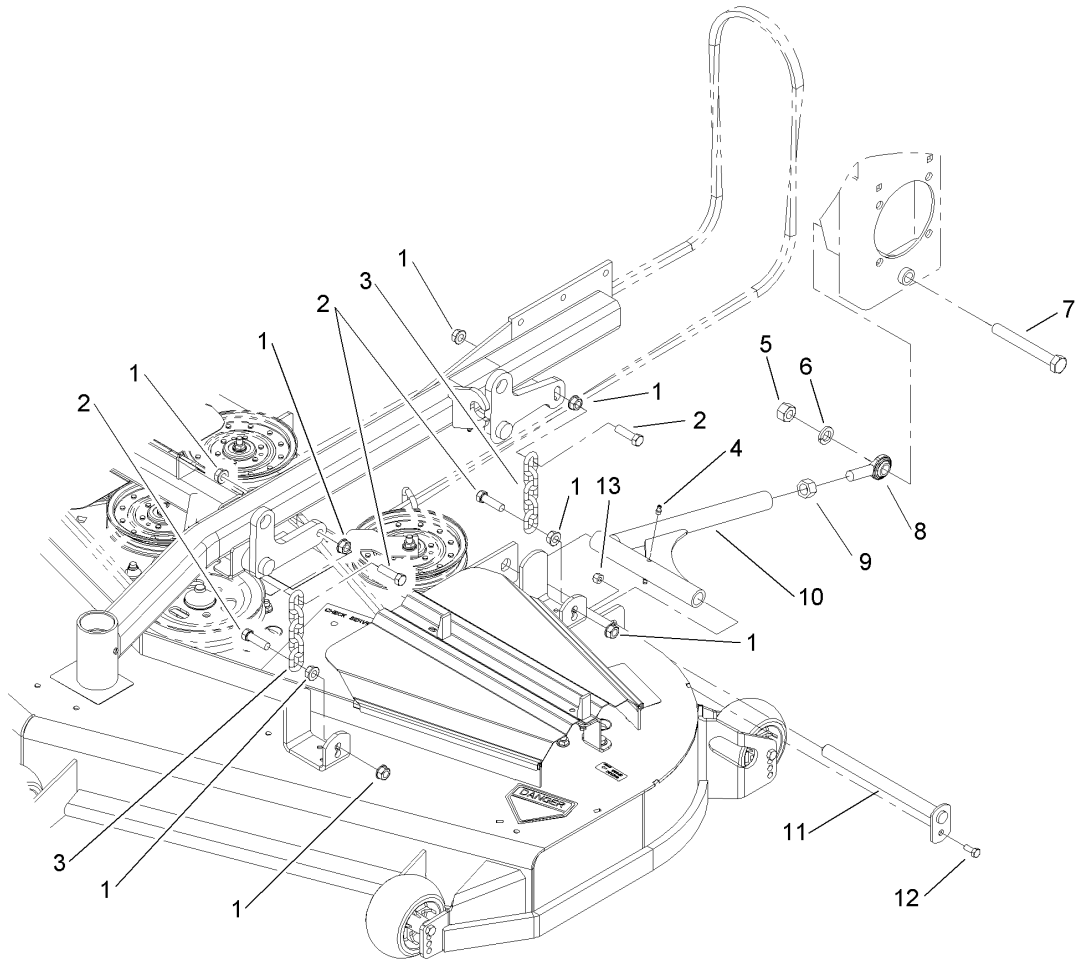
Ref	Part No.	Qty.	Description				
1	107-1880	1	Seat Track Kit				
2	107-1885	1	Weight Indicator Kit				
3	107-1881	1	Knob Kit				
4	107-1883	1	Bottom Cushion Kit				
5	107-1886	1	Switch Kit				
6	107-1887	1	Armrest Kit				
7	107-1884	1	Shock Absorber Kit				
8	107-1882	1	Back Cushion Kit				
9	103-4469	1	Seatbelt Kit				
9:2	3212-4	2	Screw-HH				
9:3	3296-38	2	Nut-Lock NI				



Roll-Over-Protection-System Assembly No. 108-1097

Ref	Part No.	Qty.	Description
② 1		1	Upper Tube ASM
1:2	107-2101	1	Decal-Rops
1:3	107-2102	1	Decal-Warning, Folding Rops
2	107-3154	2	Nut-Push
4	103-4553	2	Rops Fold Pin ASM
5	325-13	2	Screw-HH
6	32128-23	2	Nut-HF
13	106-0887	2	Knob
14	107-3124	2	Clip
16	107-3052-03	1	Seat Support Frame ASM
17	107-3058	1	Catch-Latch, Seat
18	322-3	2	Screw-HH
19	3296-29	2	Nut-Lock, NI
20	3296-39	1	Nut-Lock, NI
23	323-20	1	Screw-HH
24	107-0076	1	Spring-Torsion
25	107-0075	1	Bushing-Latch, Seat
26	62-9130	1	Grip-Handle
28	3256-24	1	Washer-Flat
29	107-3083	1	Latch ASM
34	103-4469	1	Seatbelt Kit
34:2	3212-4	2	Screw-HH
34:3	3296-38	2	Nut-Lock NI
① 54		1	Rops Bolt Bag

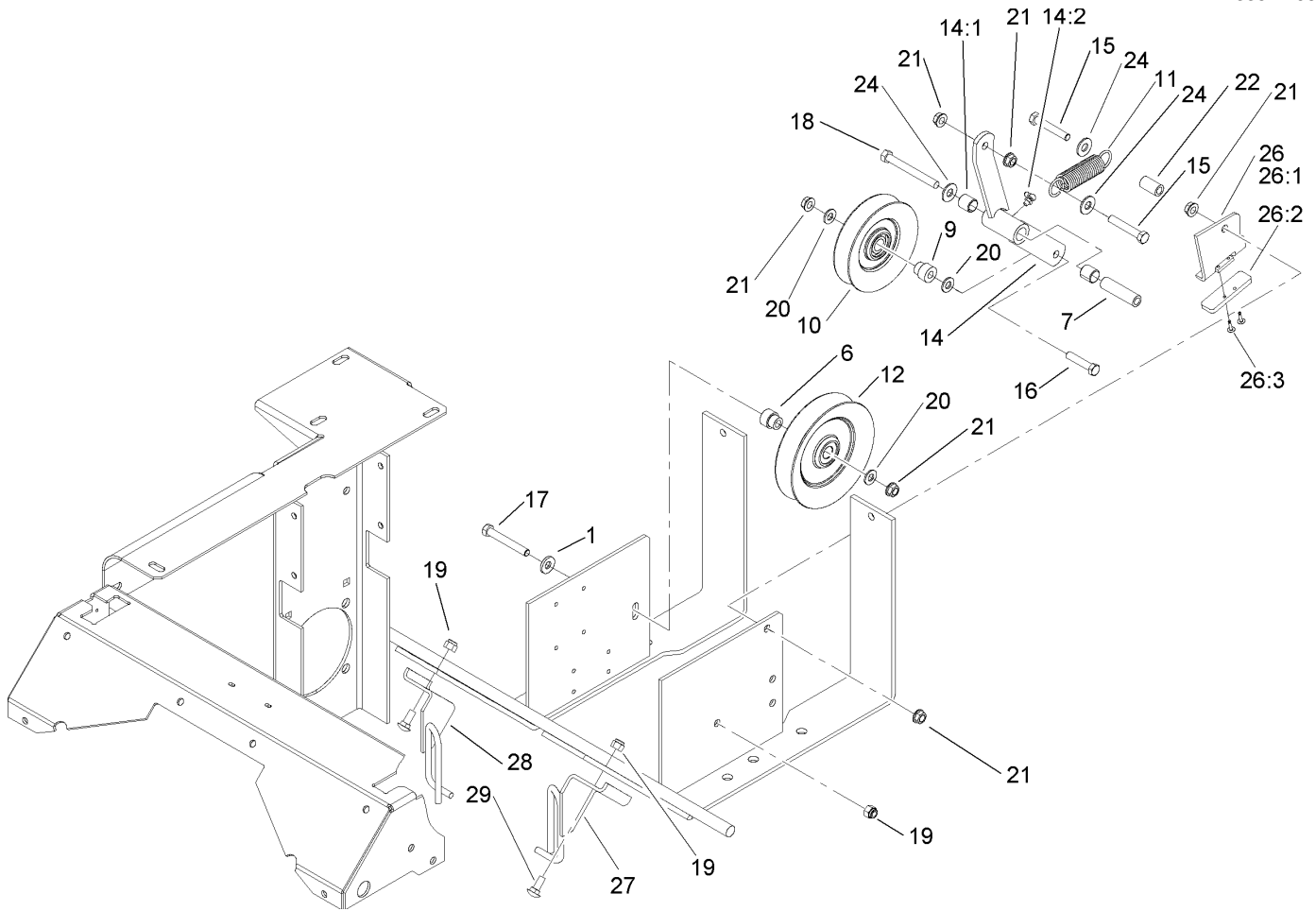
Ref	Part No.	Qty.	Description
54:3	323-6	8	Screw-HH
54:4	98-5975	8	Washer-Belleville
54:5	3290-357	8	Nut-HHF



Deck Connection Assembly

Ref	Part No.	Qty.	Description
1	32128-37	16	Nut-HF
2	103-1898	8	Screw-HH
3	1-633447	4	Chain-Lift, Deck
4	302-19	4	Fitting-Grease
5	3217-11	2	Nut-Hex
6	3253-8	2	Washer-Lock
7	327-11	2	Screw-HH
8	1-633029	2	Balljoint-Spherical
9	3219-6	2	Nut-Hex
10	103-1072-01	2	Strut
11	1-632199-01	2	Pin-Strut
12	322-3	2	Screw-HH
13	3296-29	2	Nut-Lock, NI

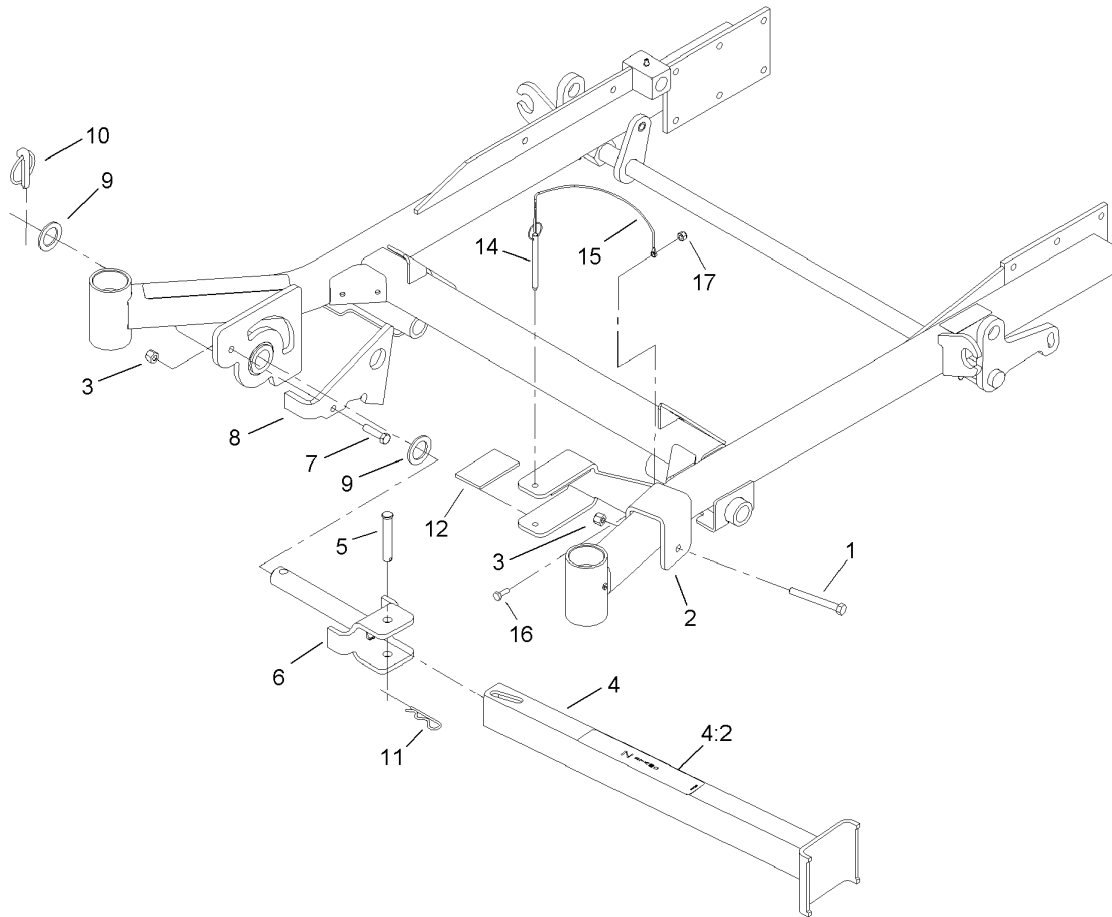
--	--	--	--



Drive Idler Assembly

Ref	Part No.	Qty.	Description
1	98-5975	1	Washer-Belleville
6	103-2627	1	Bushing-Idler
7	1-603384	1	Bushing-Pivot, Idler
9	1-603496	1	Bushing-Idler
10	99-4638	1	Idler
11	1-603402	1	Spring-Extension
12	1-633166	1	Pulley-Idler
14	103-3147	1	Arm ASM
14:1	1-513034	2	Sleeve-Bearing
14:2	302-40	1	Fitting-Grease
15	323-12	2	Screw-HH
16	323-9	1	Screw-HH
17	323-13	1	Screw-HH
18	1-800805	1	Screw-HH
19	3296-39	3	Nut-Lock, NI
20	3256-24	3	Washer-Flat
21	3290-357	6	Nut-HHF
22	1-603401	1	Spacer-Fender
24	3256-4	3	Washer-Flat
26	106-3271	1	Travel Limiter ASM
26:1	106-3228-03	1	Plate-Limiter, Pulley
26:2	106-3229	1	Pad-Bumber
26:3	3269-24	2	Rivet
27	108-7204-03	1	Guide-Belt, LH

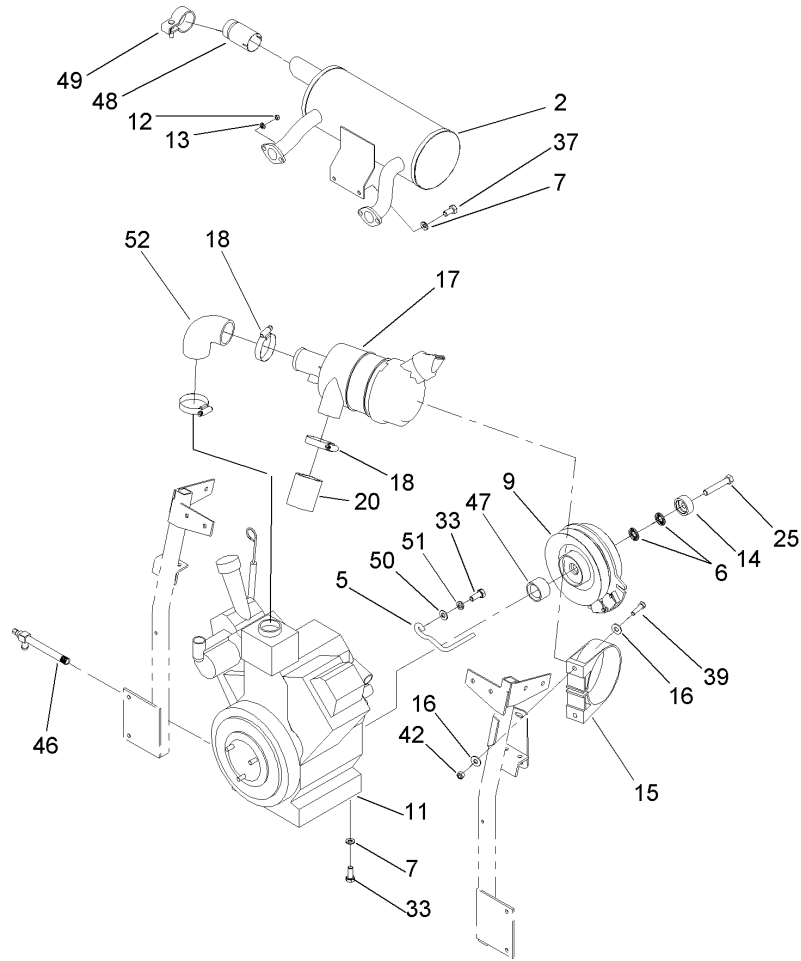
Ref	Part No.	Qty.	Description
28	108-7229-03	1	Guide-Belt, RH
29	3231-2	2	Screw-CARR



Z-Stand Assembly

Ref	Part No.	Qty.	Description
1	323-20	1	Screw-HH
2	100-6542-01	1	Bracket-Cradle
3	3296-39	2	Nut-Lock, NI
4	107-1874	1	Leg ASM
4:2	106-7464	1	Decal-Z Stand
5	283-55	1	Pin-Clevis
6	100-9692-01	1	Pivot Pin ASM
7	323-8	1	Screw-HH
8	100-9686-01	1	Bracket-Latch
9	3-6781	2	Washer-Thrust
10	283-71	1	Pin-Lynch
11	3290-355	1	Pin-Hair
12	100-6547	2	Cushion-Rubber
14	105-1647	1	Pin-Hitch, Cotterless
15	100-9385	1	Lanyard-Nylon
16	321-4	1	Screw-HH
17	3296-42	1	Nut-Lock, NI

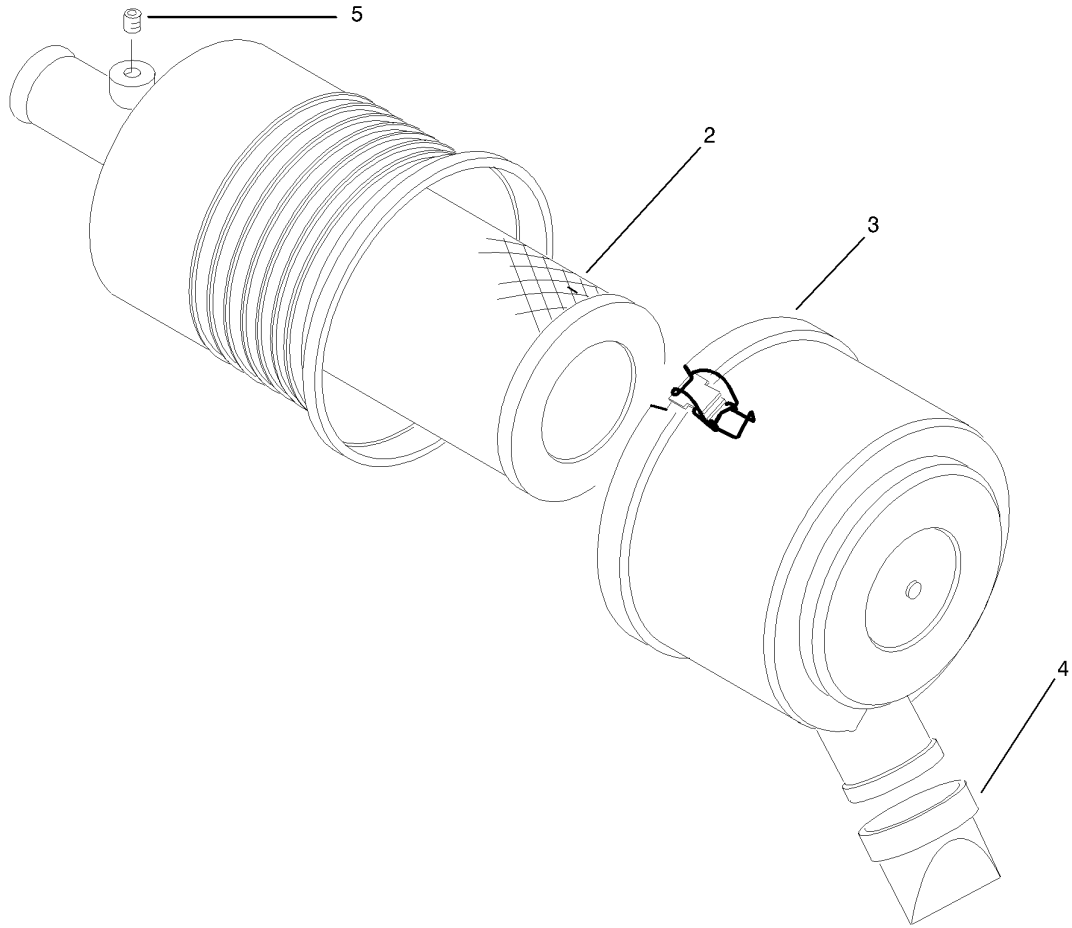
--	--	--	--



Engine and Clutch Assembly

Ref	Part No.	Qty.	Description
2	103-2759	1	Muffler
5	52-4780	1	Rod-Belt
6	1-603610	2	Washer-Spring
7	1-303334	6	Washer-Spring
9	103-6589	1	Clutch
11		1	Engine-Kawasaki, Fd750d-As03
12	33013-00	4	Nut-Hex
13	1-805004	4	Washer-Lock
14	103-0152	1	Keeper-Clutch
15	95-5806	1	Bracket-Mounting
16	3256-3	4	Washer-Flat
17	95-5805	1	Air Cleaner ASM
18	1-643009	1	Clamp-Hose
20	1-643084	1	Hose-Inlet, Air
25	48-7570	1	Screw-HH
33	33115-025	5	Screw-HH
37	33115-020	2	Screw-HH
39	322-6	3	Screw-HH
42	3296-29	2	Nut-Lock, NI
46	103-3068	1	Valve-Drain, Oil
47	103-0114	1	Spacer-Clutch
48	103-1511	1	Arrestor-Spark
49	103-1512	1	Clamp-Muffler
50	3256-24	1	Washer-Flat

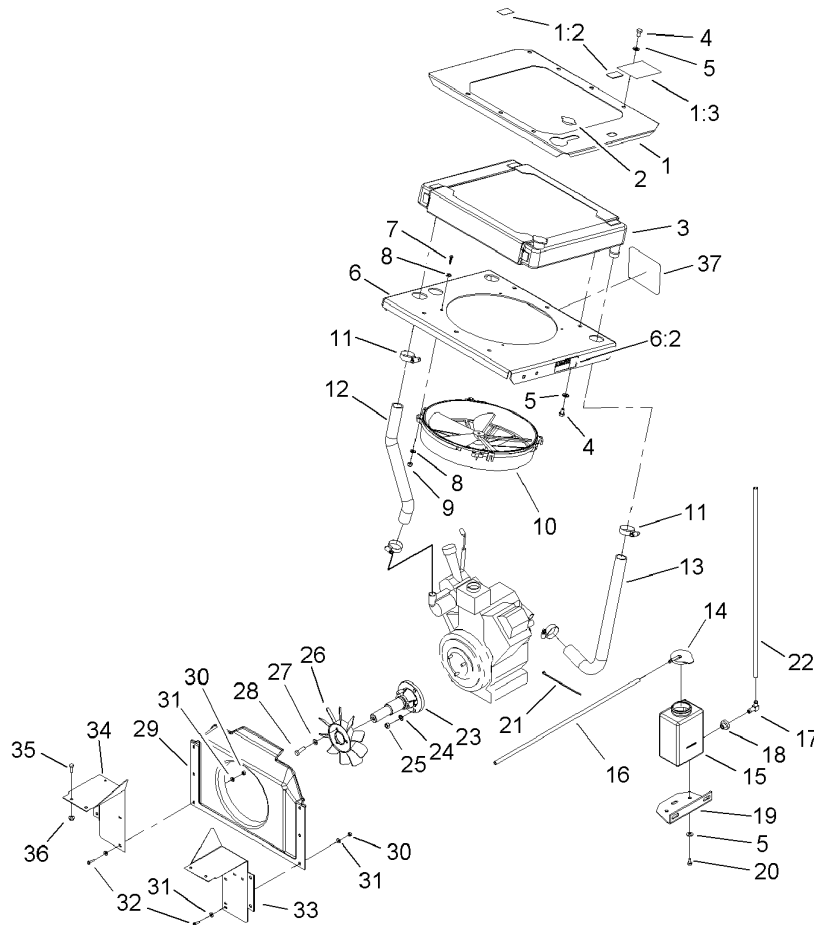
Ref	Part No.	Qty.	Description
51	98-5975	1	Washer-Belleville
52	1-643083	1	Hose-Aircleaner



Air Cleaner Assembly No. 95-5805

Ref	Part No.	Qty.	Description
2	108-3811	1	Filter-Air
3	94-3652	1	Cover ASM
4	87-9400	1	Valve-Vacuator
5	285-17	1	Plug-Pipe

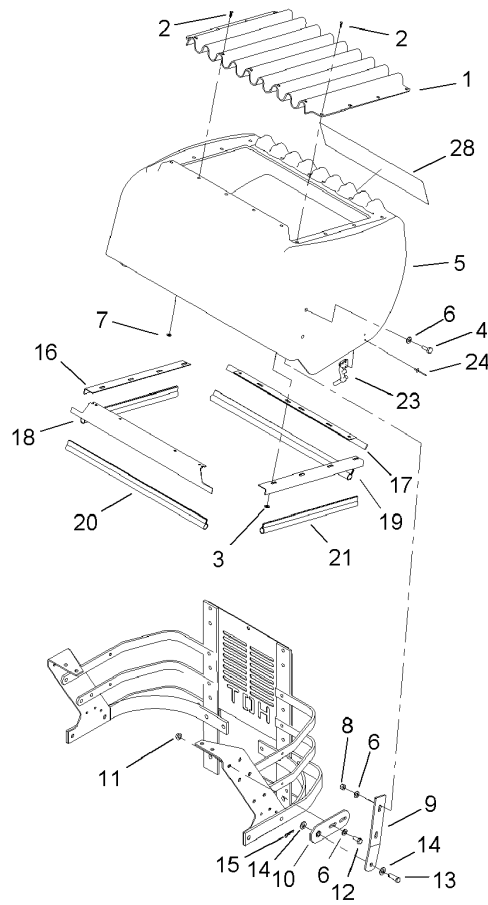
--	--	--	--



Cooling System Assembly

Ref	Part No.	Qty.	Description
1	104-7843	1	Radiator Trim Plate ASM
1:2	65-2690	2	Decal-Surface, Hot
1:3	104-2449	1	Decal-Coolant
2	1-643161	1	Cap-Radiator
3	103-1046	1	Radiator-Mount
4	322-1	12	Screw-HH
5	3256-23	14	Washer-Flat
6	100-4301	1	Fan Mounting Plate ASM
6:2	1-643253	2	Decal-Fan, Radiator
7	1-803067	4	Screw
8	3256-16	8	Washer-Flat
9	1-804254	4	Nut
10	1-633831	1	Fan
11	1-633989	4	Clamp-Hose
12	103-0074	1	Hose-Inlet, Radiator
13	103-0075	1	Hose-Outlet, Radiator
14	1-643164	1	Cap-Tank, Overflow
15	1-643163	1	Tank-Overflow
16	1-643131	1	Hose
17	1-643259	1	Fitting-Elbow
18	1-513645	1	Bushing-Valve, Fuel
19	103-2603-03	1	Bracket-Bottle
20	321-2	2	Screw-HH
21	1-303287	3	Tie-Plastic

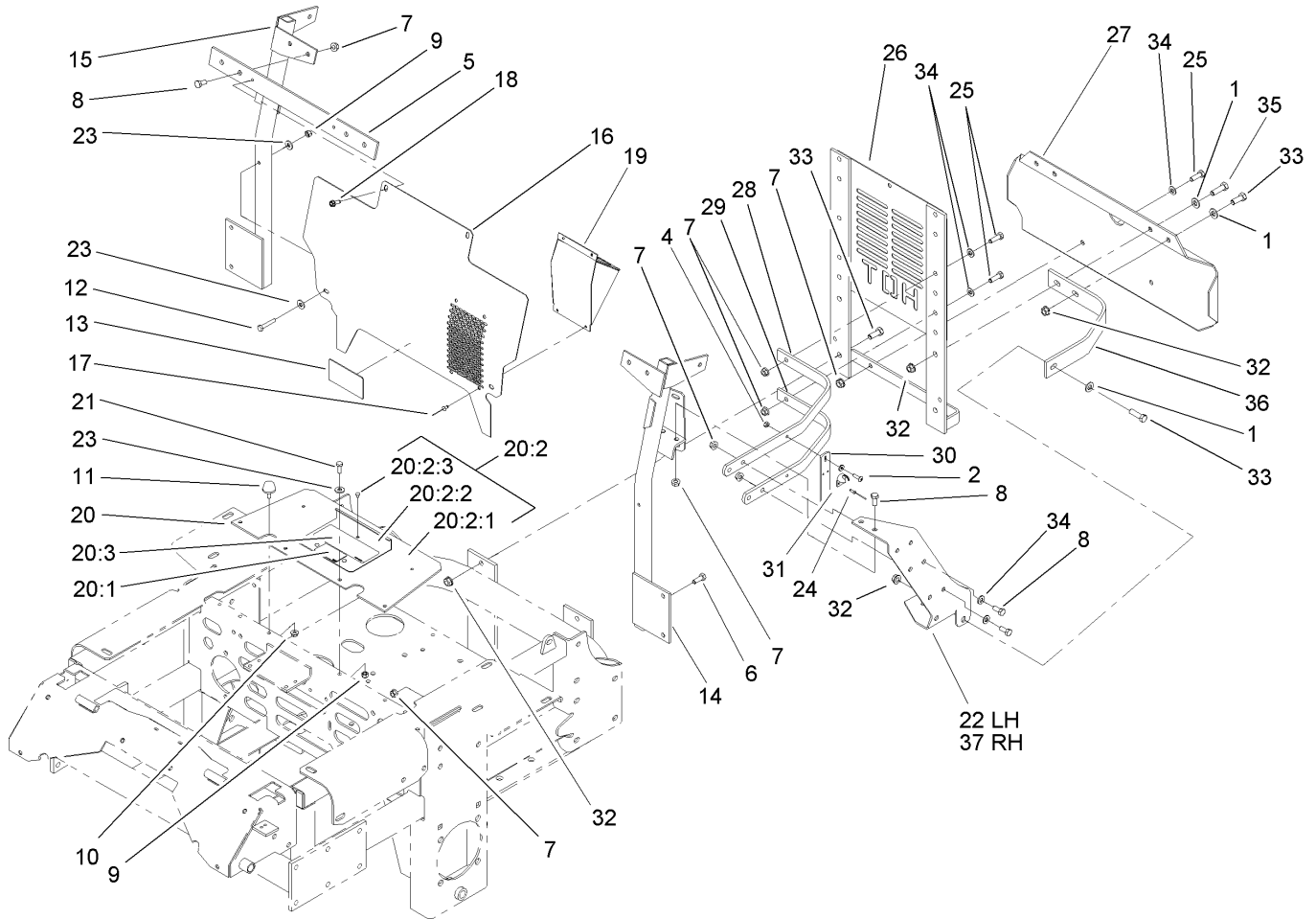
Ref	Part No.	Qty.	Description
22	1-643129	1	Hose
23	1-633851	1	Extension-Crankshaft
24	3255-8	3	Washer-Lock
25	33014-00	3	Nut-Hex
26	1-633869	1	Fan-Pump, Cooling
27	3256-22	3	Washer-Flat
28	1-809095	3	Screw-HSH
29	103-0098	1	Shroud-Fan, HYD
30	3296-2	6	Nut-Lock
31	3256-14	12	Washer-Flat
32	3290-500	6	Screw-PPH
33	103-0895-03	1	Shield-Lh, Liquid
34	1-633794-03	1	Shield-RH
35	321-4	6	Screw-HH
36	32128-33	6	Nut-HF
37	103-3270	1	Decal



Hood Assembly

Ref	Part No.	Qty.	Description
1	1-633864-03	1	Screen-Radiator
2	1-803072	17	Rivet
3	3256-14	12	Washer-Flat
4	322-4	4	Screw-HH
5	104-5136	1	Hood
6	3256-23	10	Washer-Flat
7	1-303435	5	Washer-Spring
8	3296-29	4	Nut-Lock, NI
9	1-633885-03	2	Plate-Hinge, Hood
10	1-632986-03	2	Shackle-Hinge
11	32128-20	25	Nut-HF
12	322-3	16	Screw-HH
13	1-808285	2	Pin-Clevis
14	3256-24	6	Washer-Flat
15	1-806003	2	Pin-Hair
16	1-643106-03	1	Angle-Radiator, RH
17	1-643108-03	1	Angle-Radiator, Bottom
18	1-643107-03	1	Angle-Radiator, Top
19	1-643105-03	1	Angle-Radiator, LH
20	1-643187	2	Seal-Trim
21	1-643186	2	Seal-Trim
23	1-643188	2	Latch-Rubber
24	923786	4	Rivet-Pop
28	106-7456	1	Decal

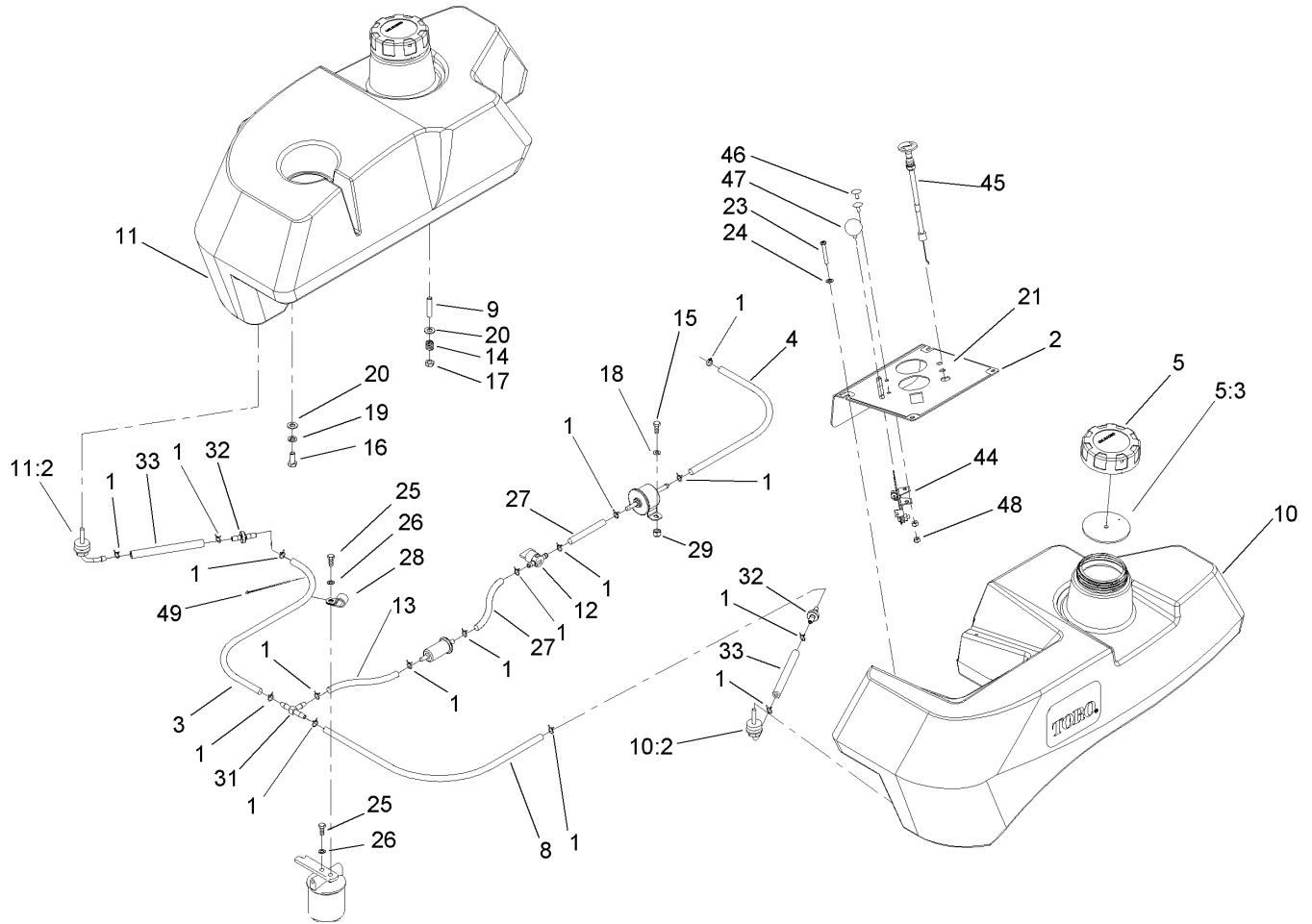
--	--	--	--



Cooling Mounting Frame Assembly

Ref	Part No.	Qty.	Description
1	3256-24	6	Washer-Flat
2	1-803075	4	Screw-Head, Truss
4	3296-2	4	Nut-Lock
5	1-633878-03	1	Crossbar
6	322-4	4	Screw-HH
7	32128-20	12	Nut-HF
8	322-3	8	Screw-HH
9	3296-42	6	Nut-Lock, NI
10	32128-33	2	Nut-HF
11	1-523420	2	Bumper
12	321-9	2	Screw-HH
13	1-643339	1	Decal-Routing, Belt
14	103-0107-03	1	Brace-Radiator, LH
15	1-632985-03	1	Brace-Radiator, RH
16	103-2870-03	1	Deflector-Air
17	3269-3	4	Rivet-Pop
18	49-2040	2	Screw-Tapping
19	103-0110-03	1	Plenum-Intake, Air
20	1-644276	1	Shield ASM
20:1	1-633462	1	Decal-Important
20:2	1-634308	1	Shield/lift ASM
20:2:1	103-1308	1	Shield-Engine
20:2:2	1-633300-03	1	Lift-Shield
20:2:3	1-803035	3	Rivet-Pop

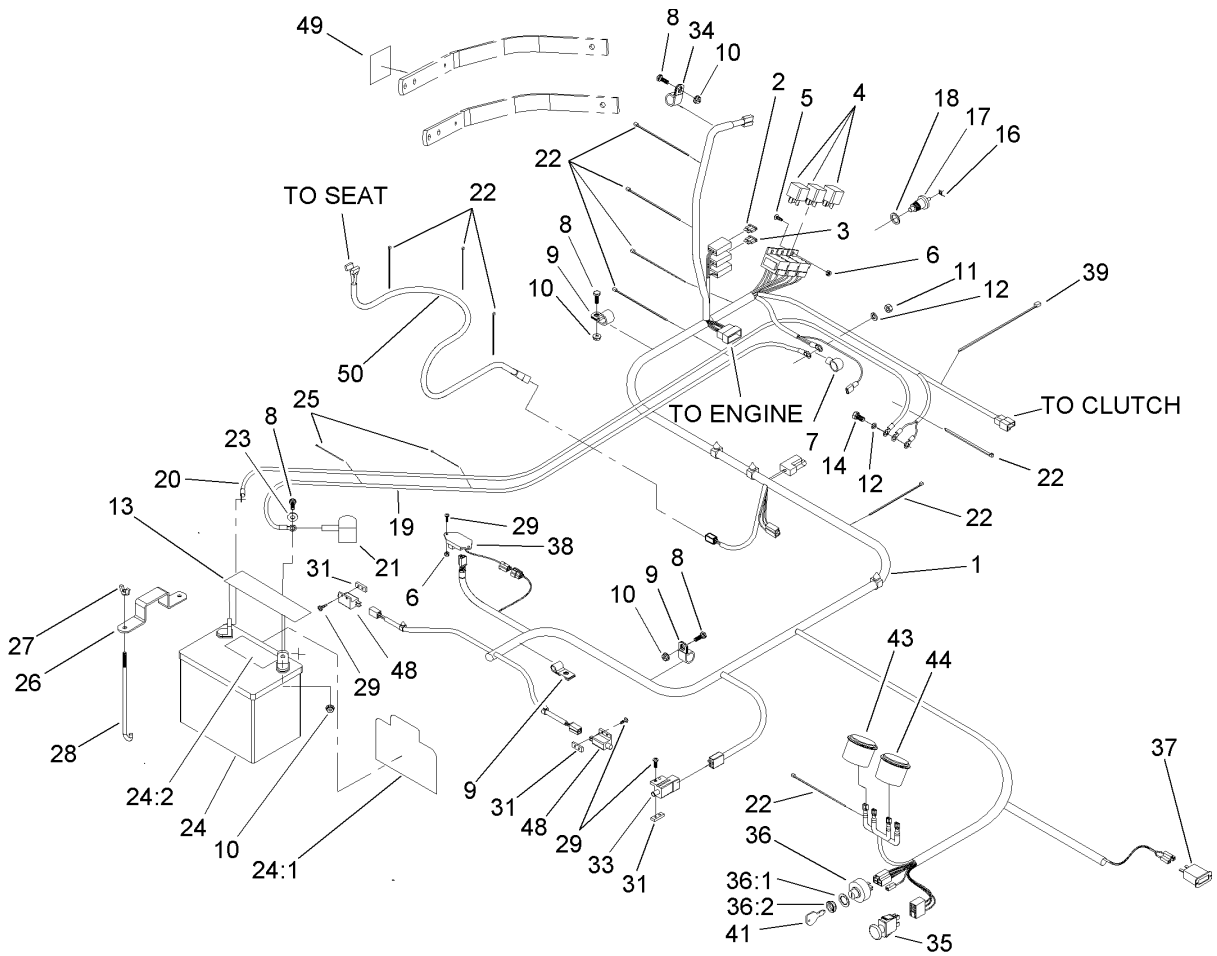
Ref	Part No.	Qty.	Description
20:3	103-5881	1	Decal-Devices, Rotating
21	321-4	4	Screw-HH
22	103-7452-03	1	Plate-Side, LH
23	3256-2	6	Washer-Flat
24	923786	4	Rivet-Pop
25	322-5	9	Screw-HH
26	1-632873-03	1	Mount-Radiator, Rear
27	1-633886-03	1	Guard-Bumper
28	1-633897-03	2	Rib-Top
29	1-633898-03	2	Rib-Bottom
30	1-633877-03	2	Bar-Hook, Latch
31	1-643189	2	Keeper-Latch, Rubber
32	3290-357	10	Nut-HHF
33	323-6	6	Screw-HH
34	3256-23	11	Washer-Flat
35	323-7	4	Screw-HH
36	103-7623-03	2	Strap-Guard
37	103-7453-03	1	Plate-Side, RH



Fuel Tank Assembly

Ref	Part No.	Qty.	Description
1	1-303077	17	Clamp
2	107-8078-03	1	Panel-Control
3	1-543526	1	Hose-Fuel
4	103-1335	1	Hose-Fuel
5	88-3980	2	Gas Cap ASM
5:3	88-4010	1	Gasket-Cap, Gas
8	80-7360	1	Hose-Fuel
9	1-633023	6	Stud
10	106-9980	1	LH Fuel Tank ASM
10:2	103-2605	1	Fitting-Fuel, Bulkhead
11	106-9979	1	RH Fuel Tank ASM
11:2	103-2605	1	Fitting-Fuel, Bulkhead
12	1-603770	1	Valve-Fuel
13	47-2965	1	Hose-Fuel
14	1-633349	6	Spring-Tank, Fuel
15	321-4	2	Screw-HH
16	322-3	2	Screw-HH
17	3296-47	6	Nut-Lock, NI
18	3256-2	2	Washer-Flat
19	1-805005	2	Washer-Lock
20	3256-23	8	Washer-Flat
21	106-9968	1	Decal-Panel, Control
23	1-803071	4	Screw
24	1-303435	4	Washer-Spring

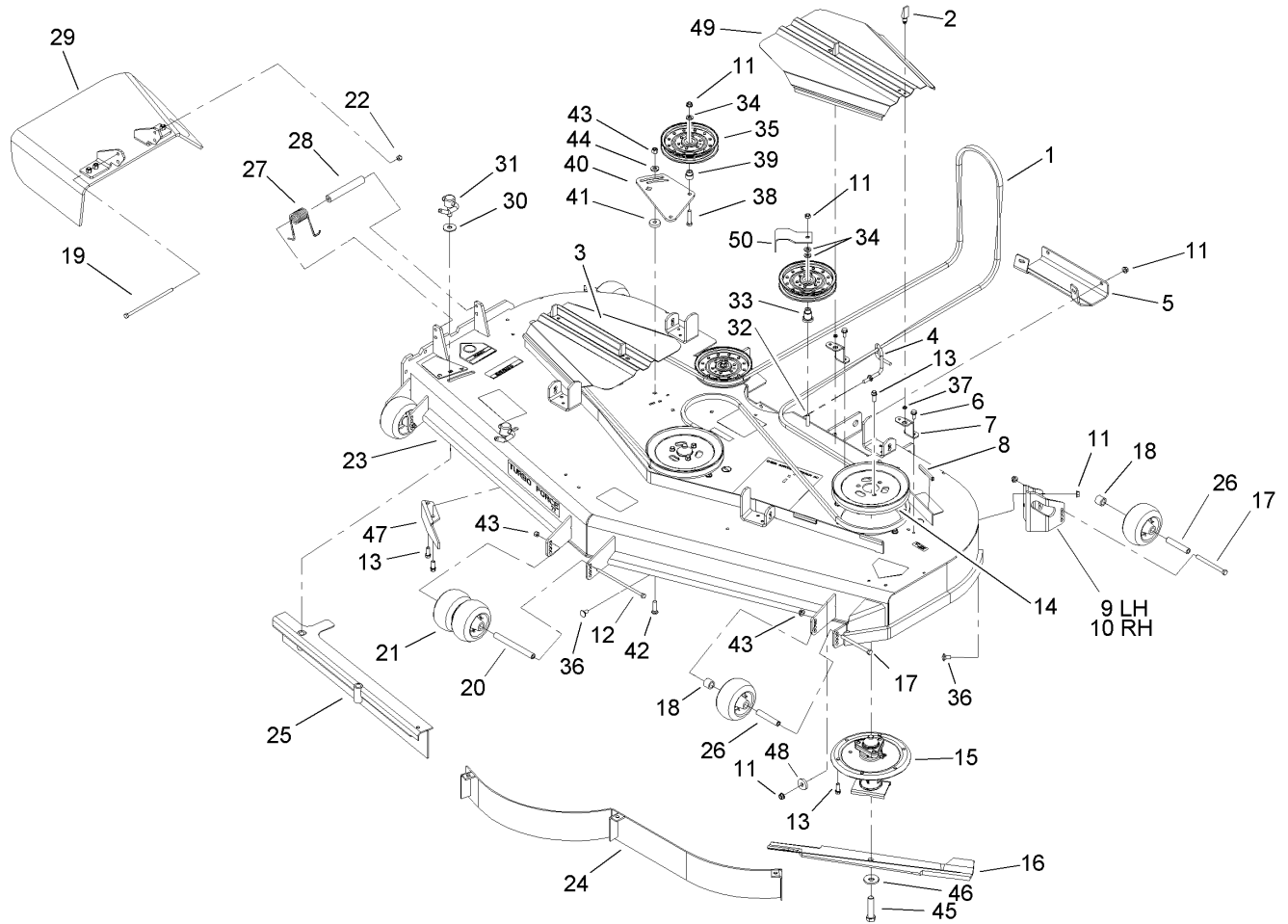
Ref	Part No.	Qty.	Description
25	321-3	2	Screw-HH
26	1-805004	2	Washer-Lock
27	47-2965	2	Hose-Fuel
28	1-513762	1	Clip-Loom
29	32128-33	2	Nut-HF
31	99-5005	1	Fitting-Tee, Barbed
32	99-5000	2	Valve-Check, Fuel
33	99-7190	2	Hose-Fuel
44	107-8073	1	Cable-Throttle
45	106-9962	1	Control-Choke, Push/pull
46	1-807513	2	Bolt-CARR
47	1-513592	1	Knob-Ball
48	3296-2	2	Nut-Lock
49	1-303335	4	Tie-Plastic



Electrical Components Assembly

Ref	Part No.	Qty.	Description
1	106-7496	1	Harness-Wire
2	1-816001	1	Fuse-Blade Type, 20 Amp
3	1-816003	1	Fuse-Blade Type, 30 Amp
4	1-643275	3	Relay
5	1-803071	2	Screw
6	3296-2	4	Nut-Lock
7	1-543393	1	Insulator-Solenoid
8	321-4	5	Screw-HH
9	1-633396	3	Clip-Loom
10	32128-33	5	Nut-HF
11	33014-00	1	Nut-Hex
12	3256-23	2	Washer-Flat
13	105-3646	1	Decal-Warning, Battery
14	33114-016	1	Screw-HH
16	1-643145	1	Tab
17	103-0283	1	Sender-Temperature
18	1-643153	1	Washer-Aluminum
19	1-523279	1	Wire-Battery, Positive
20	1-633307	1	Wire-Ground
21	1-543391	1	Insulator-Battery
22	1-303335	10	Tie-Plastic
23	3256-2	2	Washer-Flat
24	105-1692	1	Battery
24:1	104-4163	1	Decal-Battery

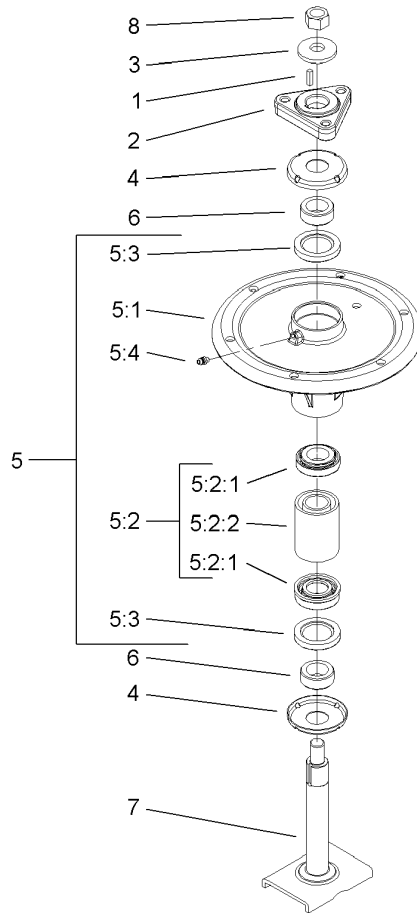
Ref	Part No.	Qty.	Description
24:2	104-4164	1	Decal-Battery
25	1-303287	2	Tie-Plastic
26	1-633652-03	1	Strap-Holddown
27	1-543792	2	Wingnut
28	1-633651	2	Bolt-Holddown
29	3290-500	8	Screw-PPH
31	1-633181	3	Plate-Tapped
33	1-633111	1	Switch
34	1-513762	1	Clip-Loom
35	1-633673	1	Switch-Delta
36	88-9830	1	Key Switch ASM
36:1	3254-5	1	Washer-Tooth
36:2	218-461	1	Nut-HH
37	1-513374	1	Meter-Hour
38	100-6186	1	Module-Delay, Seat
39	1-643115	1	Tie-Plastic
41	63-8360	2	Key-Ignition
43	1-643037	1	Gauge-Voltmeter
44	1-643021	1	Gauge-Temperature
48	1-513051	2	Switch-Open, Normally
49	103-1027	1	Decal-Relay
50	103-1227	1	Harness-Wiring, Seat



Deck Assembly

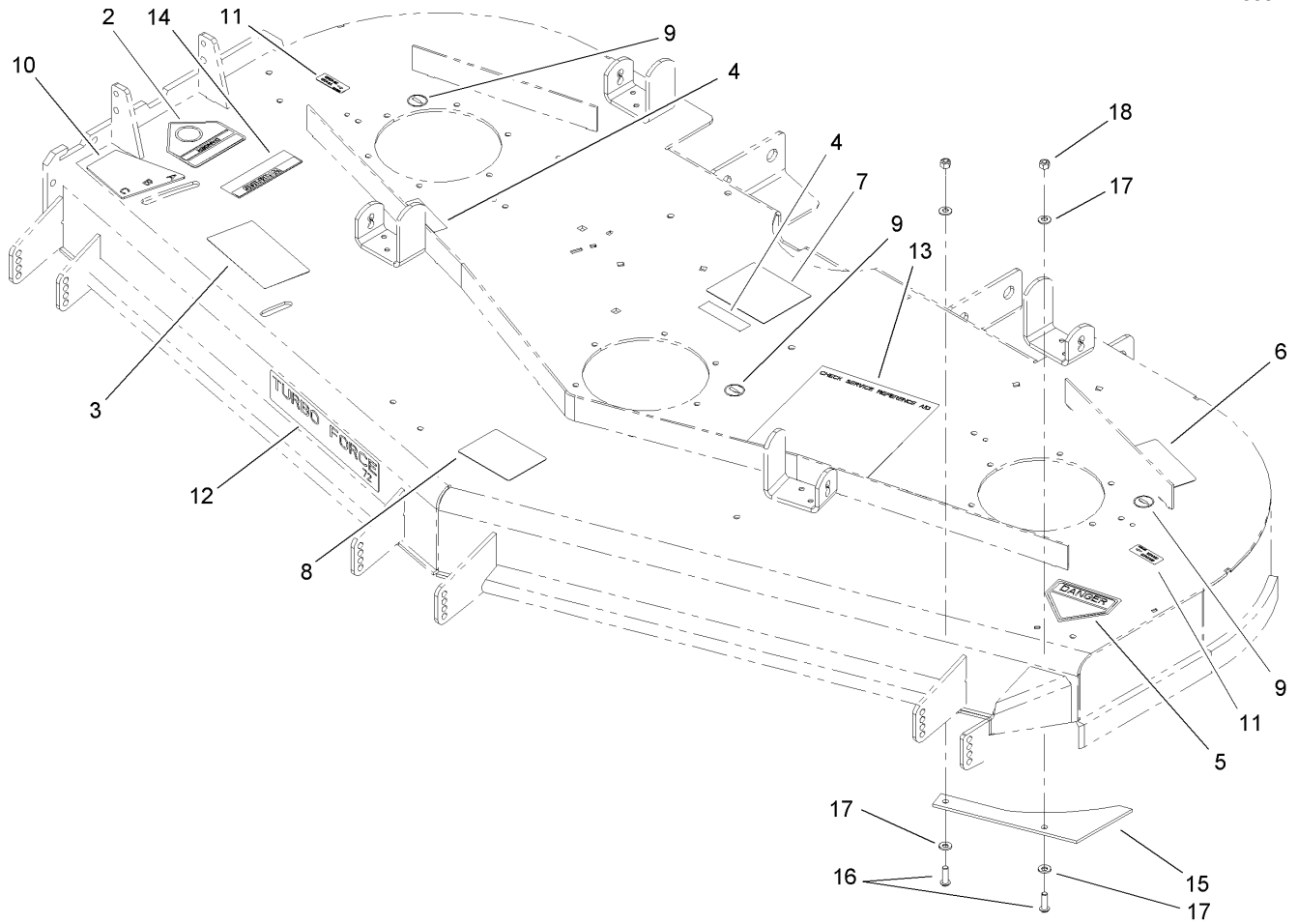
Ref	Part No.	Qty.	Description
1	106-7350	1	Belt
2	74-5950	4	Latch-Swell
3	105-8786-01	1	Cover-Belt
4	106-3220	1	Guide-Belt
5	106-3279-01	1	Plate-Skid
6	32144-70	4	Screw-HH
7	105-8787-01	4	Bracket-Cover
8	105-7699	8	Strip-Seal
9	106-7354-01	1	Plate-Roller, LH
10	106-7355-01	1	Plate-Roller, RH
11	3290-357	38	Nut-HHF
12	323-28	1	Screw-HH
13	92-1624	33	Screw
14	105-7733	3	Pulley
15	106-3217	3	Spindle ASM
16	105-7784-03	3	Blade-Hi Flow, 24.5
17	323-23	4	Screw-HH
18	98-7913	4	Tube-Spacer
19	322-50	1	Screw-HH
20	98-5967	1	Spacer-Wheel
21	1-603299	6	Roller-Anti Scalp
22	3296-29	1	Nut-Lock, NI
23	107-1625	1	Deck ASM
24	105-7730-01	1	Baffle ASM

Ref	Part No.	Qty.	Description
25	105-7669-01	1	Baffle ASM
26	98-7912	4	Tube-Spacer
27	104-8554	1	Spring-Torsion
28	105-4622	1	Spacer
29	106-3249	1	Rubber Deflector ASM
30	105-7697	2	Washer-Plastic
31	106-3242	2	Lever ASM
32	323-12	2	Screw-HH
33	106-3214	2	Mount-Pulley
34	3256-24	3	Washer-Flat
35	1-633109	3	Idler-Flat
36	3231-1	10	Screw-CARR
37	99-3058	4	Washer
38	323-9	1	Screw-HH
39	1-603496	1	Bushing-Idler
40	105-7787-01	1	Plate-Idler
41	105-7788	2	Spacer
42	3231-4	2	Screw-CARR
43	3296-39	7	Nut-Lock, NI
44	98-5975	1	Washer-Belleville
45	103-0862	3	Screw-Cap
46	103-0865	3	Washer-Blade Bolt, Heavy
47	106-3216-01	1	Baffle-Discharge
48	112843	1	Washer



Spindle Assembly No. 106-3217

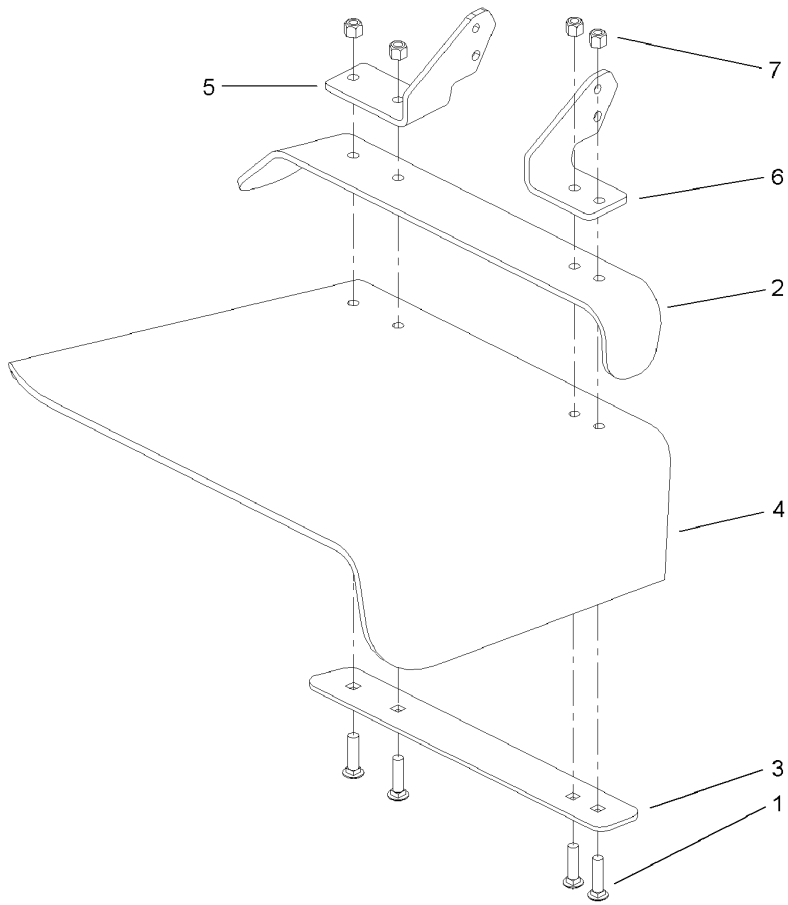
Ref	Part No.	Qty.	Description				
1	10-8040	1	Key-Square				
2	106-3277	1	Hub-Pulley				
3	103-0865	1	Washer-Blade Bolt, Heavy				
4	106-3204	2	Shield-Bearing				
5		1	Spindle Bearing ASM				
5:1	106-3211	1	Housing-Spindle				
5:2	106-3207	1	Bearing ASM				
5:2:1	27-0960	1	Bearing ASM				
5:2:2	106-3206	1	Spacer-Set, Matched				
5:3	253-133	2	Seal-Oil				
5:4	302-5	1	Fitting-Grease				
6	106-3218	2	Spacer-Seal				
7	106-3233	1	Spindle Shaft ASM				
8	3219-6	1	Nut-Hex				



Deck and Decal Assembly No. 107-1625

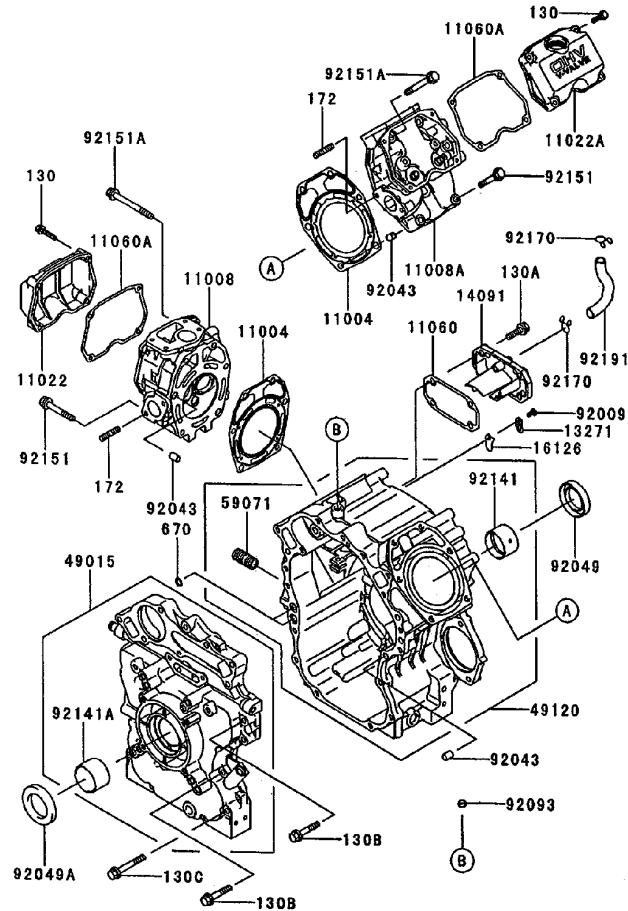
Ref	Part No.	Qty.	Description
2	54-9220	1	Decal-Danger
3	66-1340	1	Decal-Danger
4	98-5954	3	Decal-Missing, Cover
5	43-8480	1	Decal-Danger
6	68-8340	1	Decal-Torque
7	105-7797	1	Decal-Routing, Belt
8	105-7798	1	Decal-Anti Scalp
9	58-6520	3	Decal-Grease
10	107-1622	1	Decal-Adjustment, Baffle
11	107-1613	2	Decal-Grease
12	107-1620	1	Decal
13	107-1621	1	Decal-Service, Check
14	104-8569	1	Decal-Warning
15	107-3138	1	Plate-Turbo
16	3274-104	2	Screw-HSBH
17	1-303334	4	Washer-Spring
18	3296-29	2	Nut-Lock, NI

--	--	--	--



Rubber Deflector Assembly No. 106-3249

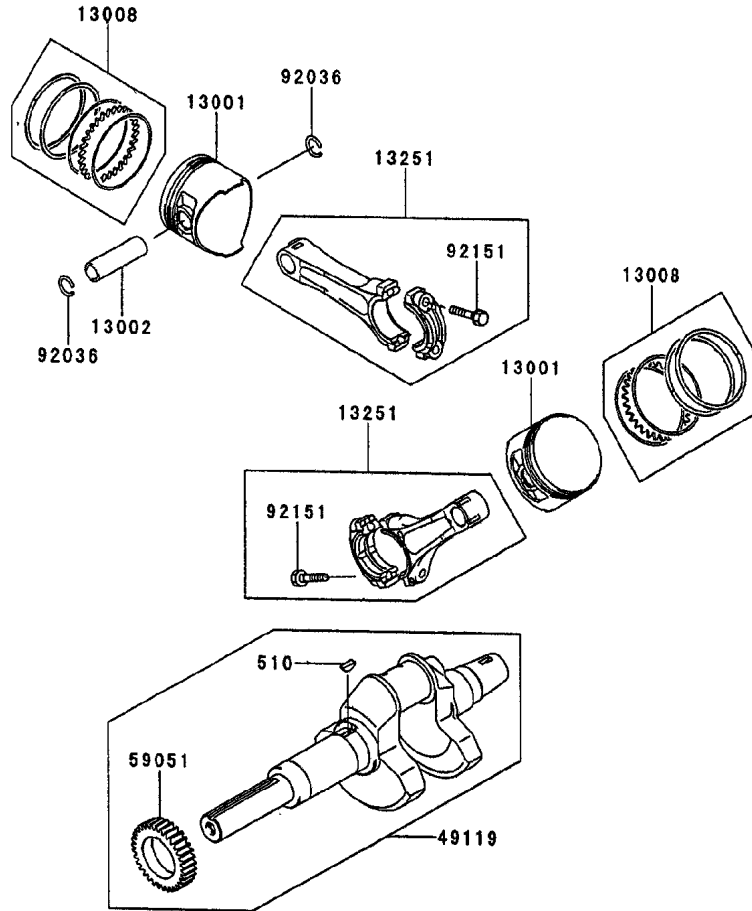
Ref	Part No.	Qty.	Description				
1	3231-4	4	Screw-CARR				
2	106-3246-01	1	Deflector				
3	106-3248-03	1	Strap-Discharge				
4	107-1617	1	Deflector-Rubber				
5	106-3252-01	1	Plate-Hinge, Rear				
6	106-3253-01	1	Plate-Hinge, Front				
7	3296-39	4	Nut-Lock, NI				



Cylinder/Crankcase Assembly Kawasaki FD750D-AS03

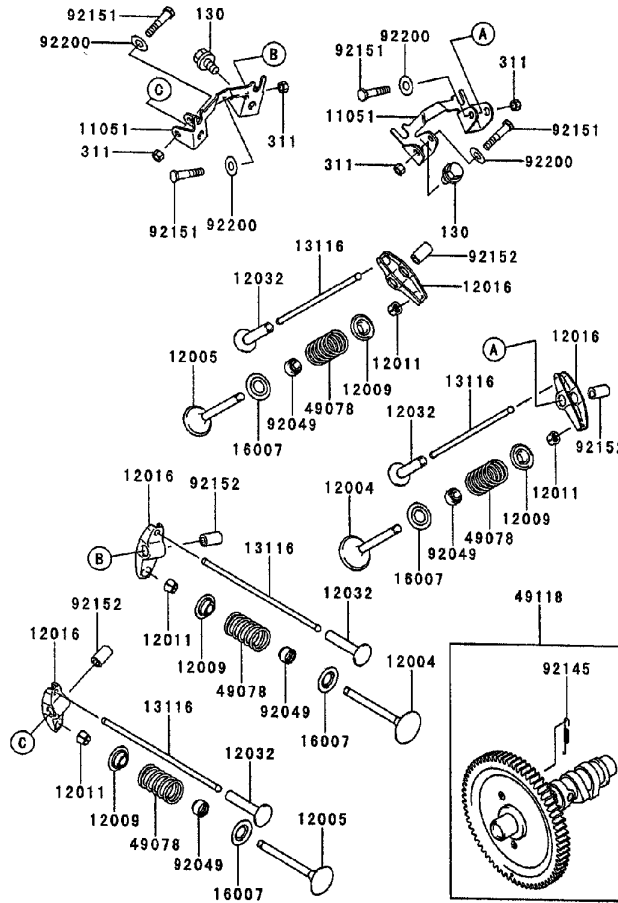
Ref	Part No.	Qty.	Description
⑤11004	11004-2142	2	Gasket-Head
⑤11008	11008-2145	1	Head-Comp-Cylinder
⑤11008A	11008-2146	1	Head-Comp-Cylinder
⑤11022	11022-2072	1	Case-Rocker
⑤11022A	11022-2073	1	Case-Rocker
⑤11060	11060-2466	1	Gasket, Breath
⑤11060A	11060-2470	2	Gasket, Rocker, Case
⑤13271	13271-2105	2	Plate
⑤14091	14091-2064	1	Cover, Breath
⑤16126	16126-2225	2	Valve, Breath
⑤49015	49015-6232	1	Cover-Crankcase
⑤49120	49120-6127	1	Crankcase-Comp
⑤59071	59071-2079	1	Joint
⑤92009	92009-2308	2	Screw
⑤92043	92043-1037	6	Pin
⑤92049	92049-2242	1	Seal-Oil
⑤92049A	92049-2243	1	Seal-Oil
⑤92093	92093-2086	1	Seal
⑤92141	92141-2118	1	Bearing-Plane
⑤92141A	92141-2119	1	Bearing-Plane
⑤92151	92151-2158	4	Bolt
⑤92151A	92151-2159	8	Bolt
⑤92170	92170-2002	2	Clamp
⑤92191	92191-2105	1	Tube

Ref	Part No.	Qty.	Description
⑤130	130G0630	8	Bolt-Flanged
⑤130A	130G0830	4	Bolt-Flanged
⑤130B	130G0845	4	Bolt
⑤130C	310G0860	4	Bolt-Flanged
⑤172	172G0822	4	Bolt-Stud
⑤670	670B2011	2	O-Ring



Piston/Crankshaft Assembly Kawasaki FD750D-AS03

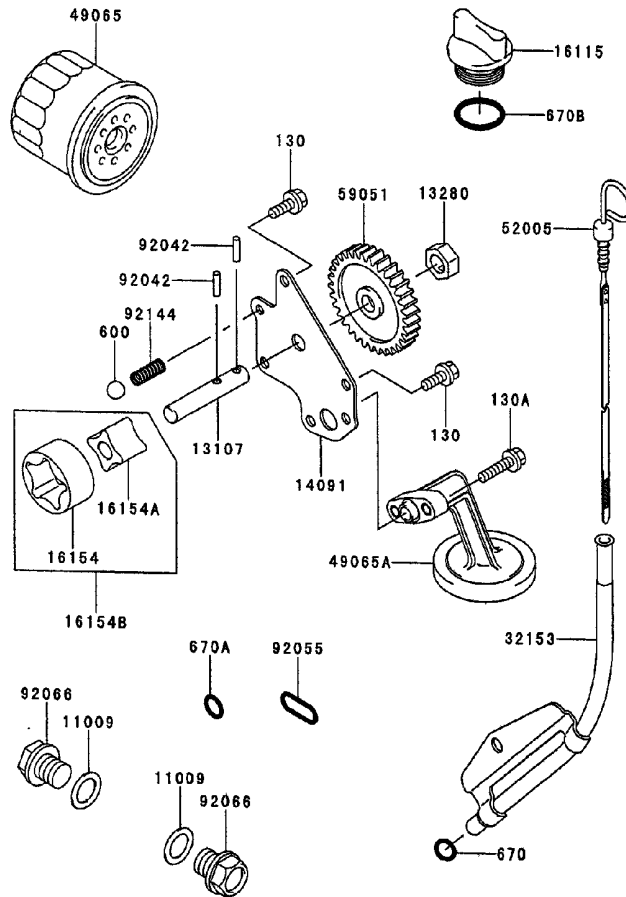
Ref	Part No.	Qty.	Description				
⑤13001	13001-2125	2	Piston-Engine				
⑤13002	13002-2069	2	Pin-Piston				
⑤13008	13008-6007	2	Ring-Set-Piston				
⑤13251	13251-2058	2	Rod ASM-Connecting				
⑤49119	49119-2198	1	Crankshaft ASM				
⑤59051	59051-2358	1	Gear-Spur, 33t				
⑤92036	92036-008	4	Ring-Snap				
⑤92151	92151-2150	4	Bolt				
⑤510	510A5100	1	Key-Woodruff				



Valve/Camshaft Assembly Kawasaki FD750D-AS03

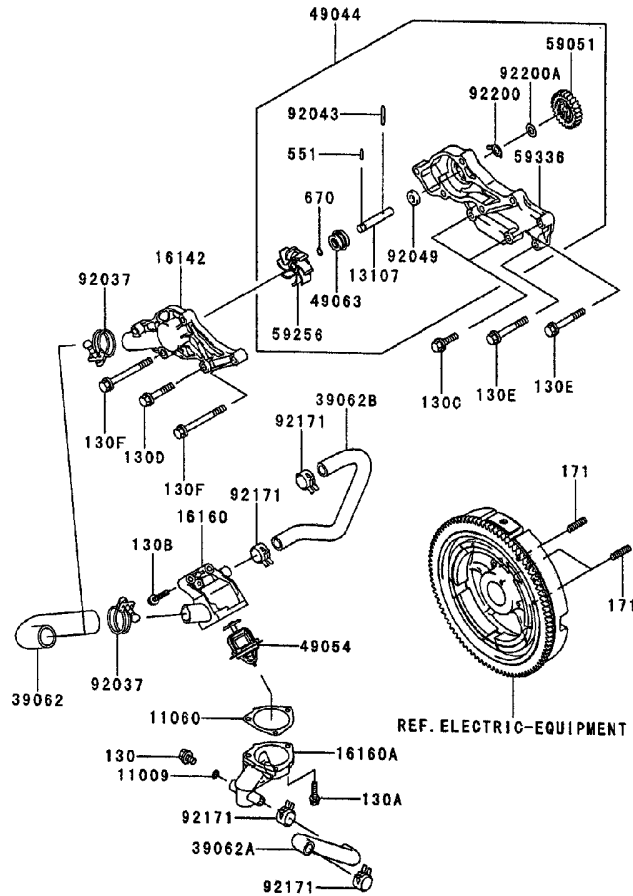
Ref	Part No.	Qty.	Description
①11051	11051-2092	2	Bracket
①12004	12004-2113	2	Valve-Intake
①12005	12005-2100	2	Valve-Exhaust
①12009	12009-2060	4	Retainer-Valve Spring
①12011	12011-2052	8	Collet
①12016	12016-2063	4	Arm-Rocker
①12032	12032-2060	4	Tappet
①13116	13116-2074	4	Rod-Push
①16007	16007-2052	4	Seat-Spring
①49078	49078-2060	4	Spring-Engine Valve
①49118	49118-2138	1	Camshaft
①92049	92049-2100	4	Seal-Oil
①92145	92145-2085	1	Spring
①92151	92151-2134	4	Bolt
①92152	92152-2066	4	Collar
①92200	92200-2128	4	Washer
①130	130G0814	4	Bolt-Flanged
①311	311B0600	4	Nut-Hex

--	--	--	--



Lubrication Equipment Assembly Kawasaki FD750D-AS03

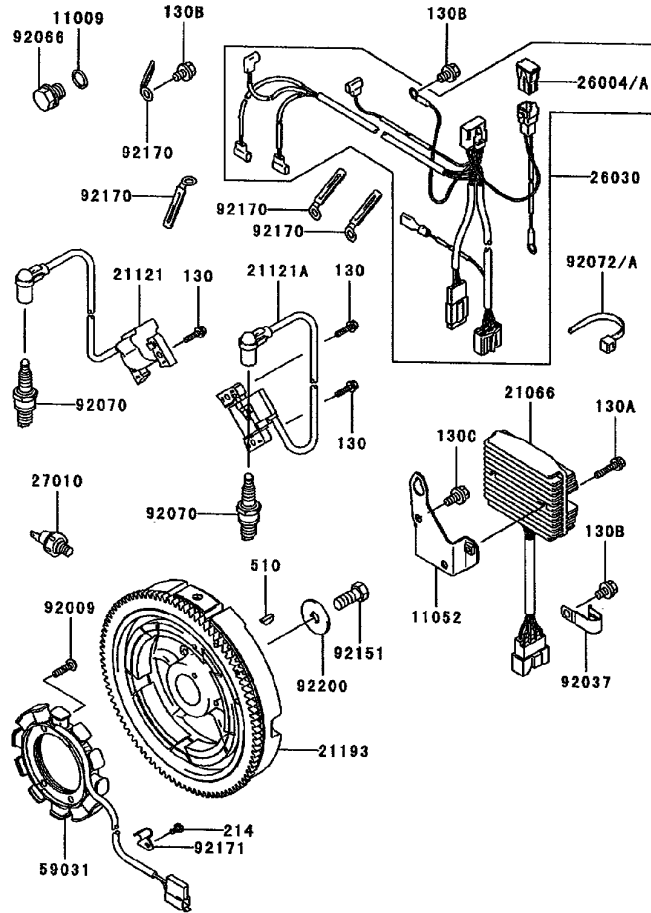
Ref	Part No.	Qty.	Description				
⑤11009	11009-2566	2	Gasket,drain Plug				
⑤13107	13107-2281	1	Shaft, Oil Pump				
⑤13280	13280-2061	1	Holder, Oil Pump				
⑤14091	14091-2065	1	Cover, Oil Pump				
⑤16115	16115-2126	1	Cap-Oil Filler				
⑤16154	16154-1075	1	Rotor-Pump, Outer				
⑤16154A	16154-1076	1	Rotor-Pump, Inner				
⑤16154B	16154-1079	1	Rotor-Pump				
⑤32153	32153-2076-9H	1	Pipe, Oil Gauge				
⑤49065	49065-2071	1	Filter-Oil				
⑤49065A	49065-2082	1	Filter				
⑤52005	52005-2132	1	Gauge, Oil				
⑤59051	59051-2354	1	Gear-Spur, 33t				
⑤92042	92042-014	2	Pin				
⑤92055	92055-2086	1	O-Ring				
⑤92066	92066-2099	2	Plug,drain				
⑤92144	92144-2053	1	Spring				
⑤130	130G0616	3	Bolt				
⑤130A	130G0625	2	Bolt-Flanged				
⑤600	600A1300	1	Ball-Steel				
⑤670	670B2010	1	O-Ring				
⑤670A	670B2011	1	O-Ring				
⑤670B	670B3025	1	O-Ring				



Cooling Equipment Assembly Kawasaki FD750D-AS03

Ref	Part No.	Qty.	Description
⑤11009	11009-3028	1	Gasket
⑤11060	11060-2475	1	Gasket-Thermostat
⑤13107	13107-2097	1	Shaft,impeller
⑤16142	16142-2077	1	Cover-Pump
⑤16160	16160-2127	1	Body-Upper
⑤16160A	16160-6002	1	Body-Valve
⑤39062	39062-2080	1	Hose-Cooling
⑤39062A	39062-2083	1	Hose-Cooling
⑤39062B	39062-2084	1	Hose-Cooling
⑤49044	49044-2063	1	Pump-Water
⑤49054	49054-2058	1	Thermostat
⑤49063	49063-1054	1	Seal-Mechanical
⑤59051	59051-2355	1	Gear-Spur, 25t
⑤59256	59256-2069	1	Impeller
⑤59336	59336-2078	1	Case-Pump
⑤92037	92170-1284	2	Clamp
⑤92043	92043-2237	1	Pin
⑤92049	92049-2111	1	Seal-Oil
⑤92171	92171-2056	4	Clamp
⑤92200	92200-2134	1	Washer
⑤92200A	92200-2135	1	Washer
⑤130	130C0812	1	Bolt-Flanged
⑤130A	130G0625	3	Bolt-Flanged
⑤130B	130G0635	2	Bolt-Flanged

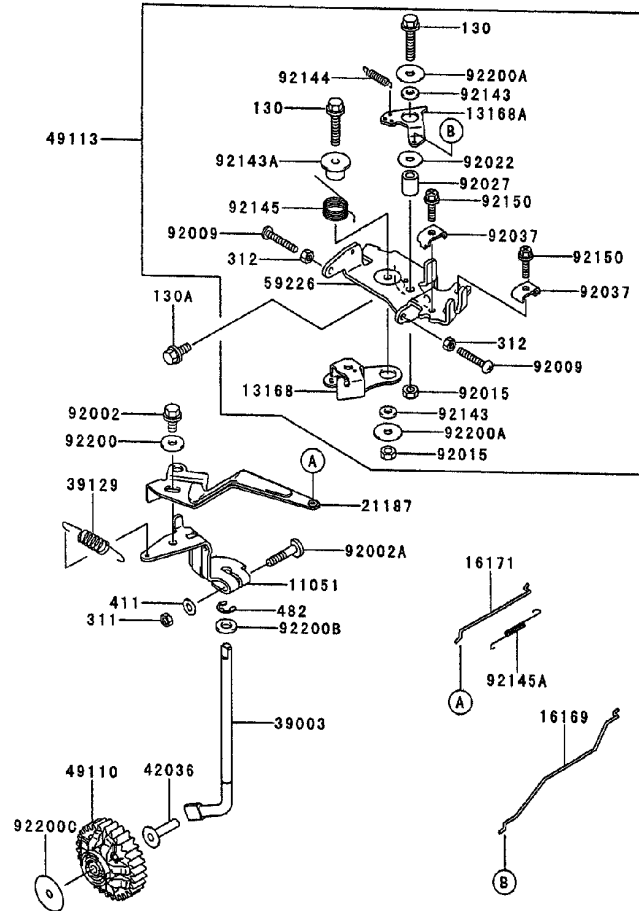
Ref	Part No.	Qty.	Description
⑤130C	130G0830	2	Bolt-Flanged
⑤130D	130G0845	1	Bolt
⑤130E	130G0860	2	Bolt-Flanged
⑤130F	130G0880	4	Bolt-Flanged
⑤171	171G0818	3	Bolt-Stud
⑤551	551A0314	1	Pin-Dowel
⑤670	670B1507	1	O Ring



Electric Equipment Assembly Kawasaki FD750D-AS03

Ref	Part No.	Qty.	Description
⑤11009	11009-2766	1	Gasket
⑤11052	11052-2058	1	Bracket
⑤21066	21066-2079	1	Regulator-Voltage
⑤21121	21121-2090	1	Coil-Ignition, No. 1
⑤21121A	21121-2091	1	Coil-Ignition, No. 2
⑤21193	21193-2177	1	Flywheel ASM
⑤26004	26004-1093	1	Fuse ASM
⑤26030	26030-2320	1	Harness
⑤27010	27010-7001	1	Switch
⑤59031	59031-2127	1	Coil-Charging
⑤92009	92009-2273	4	Scerw
⑤92037A	92037-2101	1	Clamp
⑤92066	92066-2099	1	Plug,drain
⑤92070	92070-2110	2	Plug-Spark, Bpr2es
⑤92072	92072-1195	1	Band
⑤92151	92151-2097	1	Bolt (12x30)
⑤92170	92170-2060	4	Clamp
⑤92171	92171-2060	1	Clamp
⑤92200	92200-2119	1	Washer
⑤130	130G0520	1	Bolt-Flanged
⑤130A	130G0630	2	Bolt-Flanged
⑤130B	130G0812	3	Bolt
⑤130C	130G0816	2	Bolt-Flanged
⑤214	214B0510	1	Screw-Pan

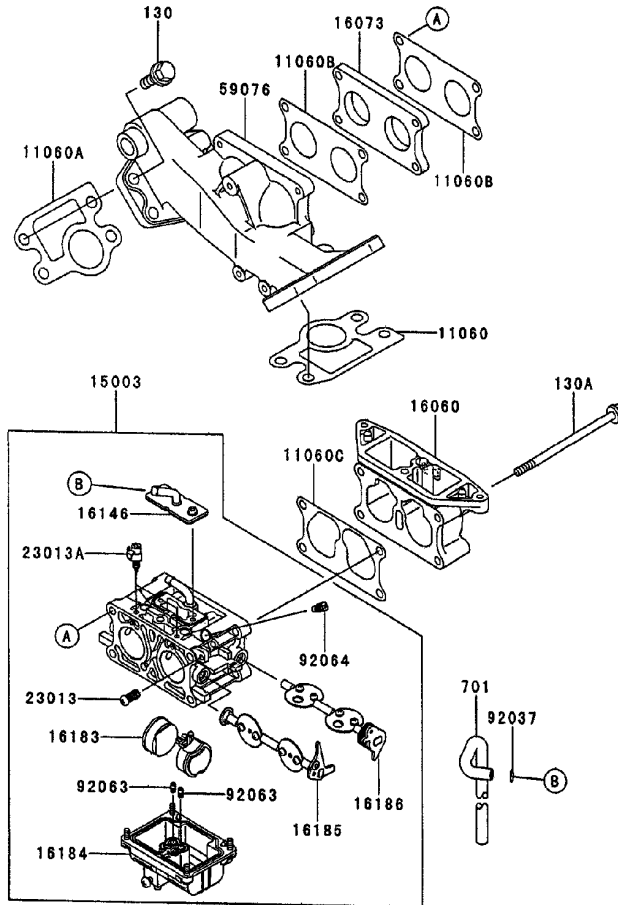
Ref	Part No.	Qty.	Description
⑤510	510A5100	1	Key-Woodruff



Control Equipment Assembly Kawasaki FD750D-AS03

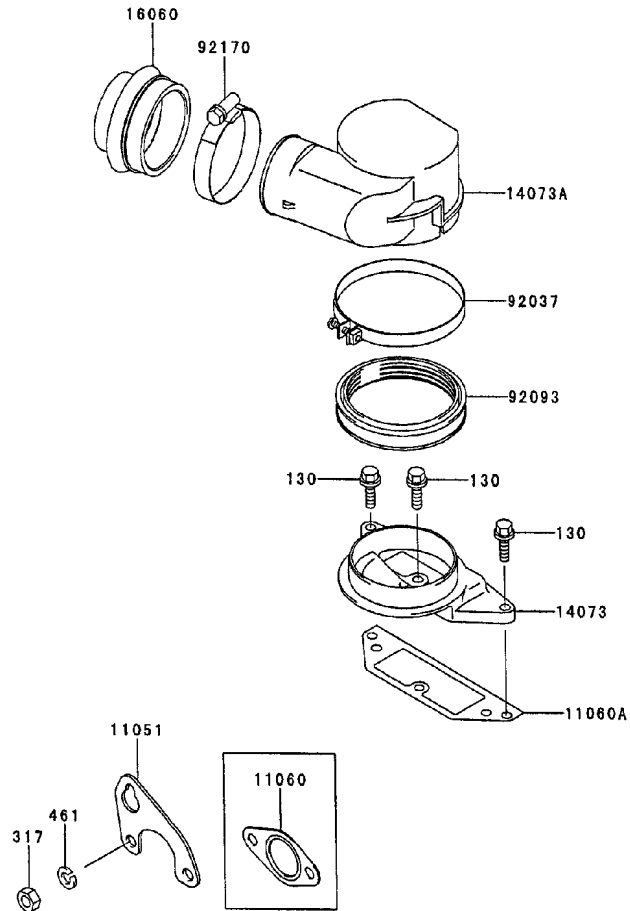
Ref	Part No.	Qty.	Description
①11051	11051-2113	1	Bracket
①13168	13168-2466	1	Lever-Throttle
①13168A	13168-2467	1	Lever-Choke
①16169	16169-2142	1	Link-Choke
①16171	16171-2091	1	Link
①21187	21187-2073	1	Arm ASM
①39003	39003-2091	1	Arm-Pivot
①39129	39129-2099	1	Spring-Governor
①42036	42036-2060	1	Sleeve
①49110	49110-2094	1	Governor ASM
①49113	49113-2170	1	Panel-Comp-Control
①59226	59226-2328	1	Panel-Control
①92002	92002-1902	1	Bolt
①92002A	92002-2269	1	Bolt
①92009	92009-2381	2	Screw
①92015	92015-2051	2	Nut
①92022	92002-2372	1	Washer
①92027	92027-1461	1	Collar
①92037	92037-2209	2	Clamp
①92143	92143-2135	2	Collar, 6x13x2.3
①92143A	92143-2148	1	Collar
①92144	92144-2052	1	Spring
①92145	92145-2058	1	Spring
①92145A	92145-2095	1	Spring

Ref	Part No.	Qty.	Description
①92150	92150-2182	2	Bolt (5x18)
①92200	92200-2035	1	Washer
①92200A	92200-2108	2	Washer
①92200B	92200-2120	1	Washer
①92200C	92200-2122	1	Washer
①130	130B0630	2	Bolt-Flanged
①130A	130G0614	2	Bolt
①311	311B0600	2	Nut-Hex
①312	312G0500	2	Nut-Hex
①411	411b0600	1	Washer-Plain
①482	482J7000	1	Circlip-Type E



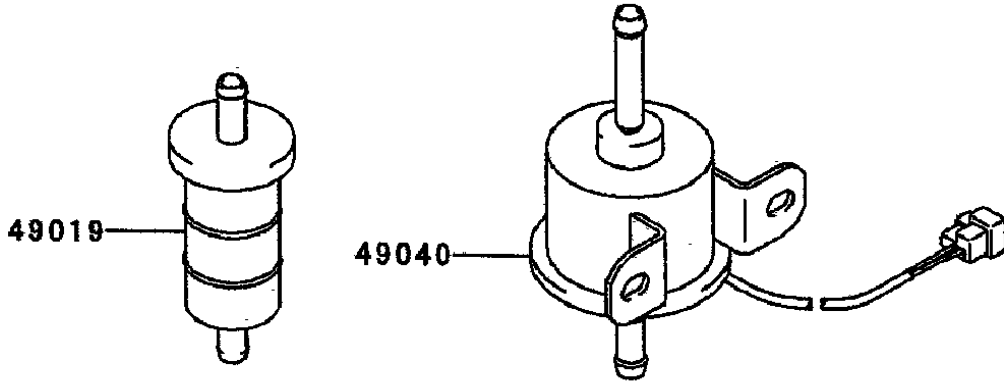
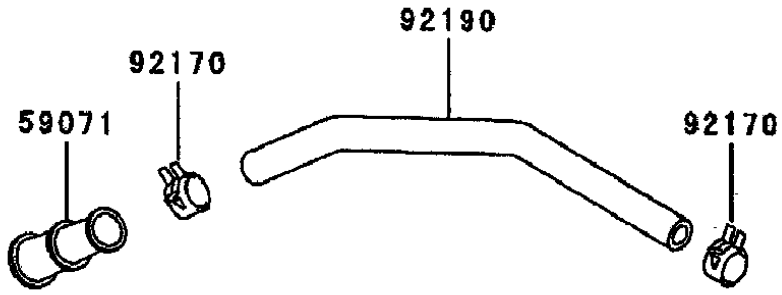
Carburetor Assembly Kawasaki FD750D-AS03

Ref	Part No.	Qty.	Description				
⑤11060	11060-2468	1	Gasket-Intake				
⑤11060A	11060-2469	1	Gasket-Intake				
⑤11060B	11060-2471	2	Gasket-Intake Pipe				
⑤11060C	11060-2473	1	Gasket-Carburetor				
⑤15003	15003-2776	1	Carburetor ASM				
⑤16060	16060-2194	1	Pipe-Intake				
⑤16073	16073-2206	1	Insulator				
⑤16146	16146-2227	1	Cover ASM				
⑤16183	16183-2006	1	Float ASM				
⑤16184	16184-2004	1	Float Chamber ASM				
⑤16185	16185-2036	1	Throttle Valve ASM				
⑤16186	16186-2036	1	Choke Valve ASM				
⑤23013	23013-2059	1	Screw ASM				
⑤23013A	23013-2060	1	Screw ASM				
⑤59076	59076-2065	1	Manifold-Intake				
⑤92037	92037-1610	1	Clamp				
⑤92063	92063-2400	2	Jet-Main				
⑤92064	92064-2113	2	Jet-Pilot				
⑤130	130G0825	8	Bolt				
⑤130A	130T06110	4	Bolt-Flanged				
⑤701	701Q061000	1	Tube-Pvc				



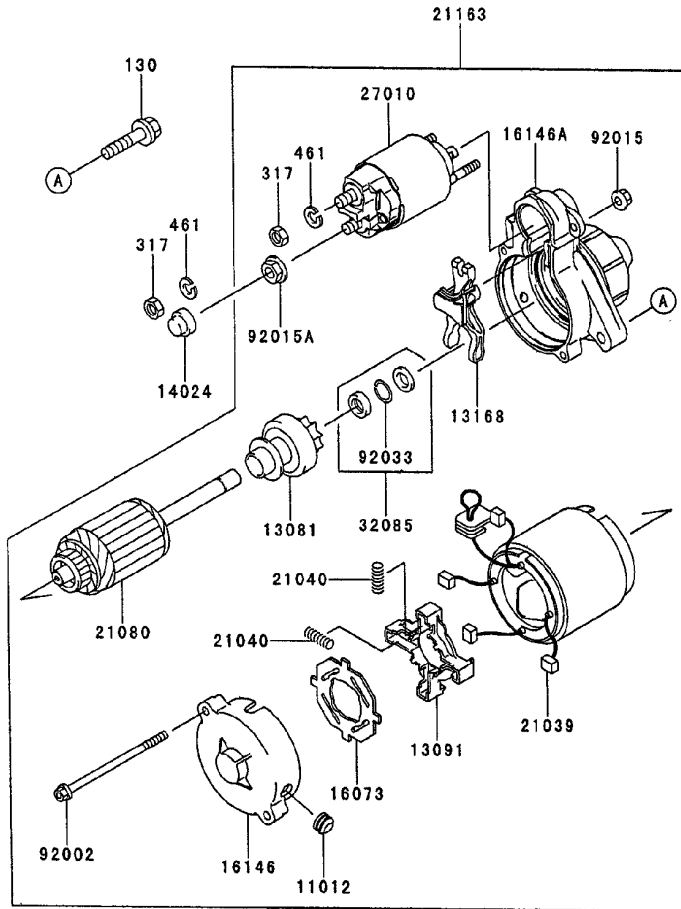
Air Filter/Muffler Assembly Kawasaki FD750D-AS03

Ref	Part No.	Qty.	Description				
④11051	11051-2088	1	Bracket				
④11060	11060-2467	2	Gasket-Muffler				
④11060A	11060-2474	2	Gasket-Air Filter				
④14073	14073-2075	1	Duct-Lower				
④14073A	14073-2076	1	Duct-Upper				
④16060	16060-2197	1	Pipe-Intake				
④92037	92037-1654	1	Clamp				
④92093	92093-2118	1	Seal				
④92170	92170-2075	1	Clamp				
④130	130G0620	3	Bolt-Flanged				
④317	317R0800	1	Nut-Hex, Small				
④461	461F0800	1	Washer-Spring				



Fuel Tank/Fuel Valve Assembly Kawasaki FD750D-AS03

Ref	Part No.	Qty.	Description				
④49019	49019-1055	1	Filter-Fuel				
④49040	49040-2065	1	Pump-Fuel, Kawasaki				
④59071	59071-2119	1	Joint				
④92170	92170-2042	2	Clamp				
④92190	92190-2095	1	Tube				



Starter Assembly Kawasaki FD750D-AS03

Ref	Part No.	Qty.	Description				
①11012	11012-2226	1	Cap				
①13081	13081-2108	1	Clutch ASM				
①13091	13091-2068	1	Brush Holder				
①13168	13168-2131	1	Lever				
①14024	14024-2205	1	Cover				
①16073	16073-2098	1	Insulator				
①16146	16146-2187	1	Cover ASM				
①16146A	16146-2225	1	Cover ASM				
①21039	21039-2059	4	Brush				
①21040	21040-2052	4	Brush Spring				
①21080	21080-2054	1	Armature				
①21163	21163-2120	1	Starter-Electric				
①27010	27010-2122	1	Switch				
①32085	32085-2097	1	Stopper				
①92002	92002-2277	2	Bolt				
①92015	92015-2146	2	Nut				
①92015A	92015-2147	1	Nut				
①92033	92033-2081	1	Ring-Snap				
①130	130G0835	2	Bolt-Flanged				
①317	317B0800	2	Nut				
①461	461F0800	2	Washer-Spring				

Attachments and Accessories

For 74252 - Z587L Z Master, With 72in TURBO FORCE Side Discharge Mower

Product Name	Model/Part
Belt-Seat	100-4928
Blade-Mid Flow, 24.5in	105-7711-03
Blade-Lo Flow, 24.5in	105-7712-03
Blade-Atomic, 24.5in	105-7719-03
Blade-Recycler, 24.5in	105-7778-03
Blade-Hi Flow, 24.5in	105-7784-03
72in Recycler Kit	107-1612
Hitch Kit	99-8925

NOTES

NOTES

