



## **Greensmaster<sup>®</sup> 3100**

### **2 Wheel Drive**

**Model No. 04356 - 250000001 and up.**

## **Parts Catalog**

### **Ordering Replacement Parts**

To order replacement parts, please supply the part number, the quantity, and the description of each part desired.

### **Understanding Reference Numbers**

Each Identified part in an illustration has a reference number. The reference number for a part also appears in the parts list, along with other information about the part.

This catalog uses two special reference number formats, one to indicate parts in a service assembly and another to indicate the quantity of a given part in an illustration.

### **Service Assembly Reference Numbers**

Parts in service assemblies have reference numbers in the form a:b. The a represents the reference number of the entire service assembly and the b represents a sequential number unique to each part within the service assembly.

For example, a wheel assembly might be identified by reference number 6, the tire by 6:1, the valve by 6:2, and the wheel by 6:3. When you order the assembly identified by reference number 6, you receive all parts identified by reference numbers 6:1, 6:2, and 6:3. However, you may also order any part individually. Reference numbers of this type appear in illustrations and in part lists.

### **Reference Numbers Indicating Quantity**

In an illustration, if a reference number indicates more than one part, the reference number has the form nX y. The n represents the quantity of the part, the X is the multiplication symbol, and the y represents the reference number.

For example, in an illustration, the reference number 2X 37 means that two of the parts identified by reference number 37 are indicated.

# Contents

<b>Description</b>	<b>Page</b>	<b>Description</b>	<b>Page</b>
Control Pedal Assembly	..... 4	Cylinder Assembly Briggs and Stratton 350447-1332-E1	..... 39
Traction Control Assembly	..... 6	Crankshaft Assembly Briggs and Stratton 350447-1332-E1	..... 40
Front Wheel and Brake Assembly	..... 7	Cylinder Head Assembly No. 1 Briggs and Stratton 350447-1332-E1	..... 41
Hydraulic Wheel Motor Assembly No. 92-9199	..... 8	Cylinder Head Assembly No. 2 Briggs and Stratton 350447-1332-E1	..... 42
Steering Arm Assembly	..... 9	Intake Manifold and Rocker Cover Assembly Briggs and Stratton 350447-1332-E1	..... 43
Power Steering Valve Assembly No. 92-8690	..... 10	Carburetor Assembly Briggs and Stratton 350447-1332-E1	..... 44
Right Hand Pull Frame Assembly	..... 11	Governor Assembly Briggs and Stratton 350447-1332-E1	..... 45
Hydraulic Cylinder Assembly No. 106-9066	..... 13	Alternator Assembly Briggs and Stratton 350447-1332-E1	..... 46
Left Hand Pull Frame Assembly	..... 14	Fuel Pump, Oil Pump and Dipstick Assembly Briggs and Stratton 350447-1332-E1	..... 47
Rear Pull Frame Assembly	..... 15	Air Cleaner Assembly Briggs and Stratton 350447-1332-E1	..... 48
Hydraulic Cylinder Assembly No. 106-9064	..... 17	Blower Housing Assembly Briggs and Stratton 350447-1332-E1	..... 49
Seat Assembly	..... 18	Flywheel Assembly Briggs and Stratton 350447-1332-E1	..... 50
Control Valve Installation Assembly	..... 19	Starter Assembly Briggs and Stratton 350447- 1332-E1	..... 51
Control Valve Assembly No. 105-3800	..... 21	Starter Assembly No. 2 Briggs and Stratton 350447-1332-E1	..... 52
Section 1 Assembly No. 105-3801	..... 22	Gasket Assembly Briggs and Stratton 350447- 1332-E1	..... 53
Section 2 Assembly No. 105-3802	..... 23	Carburetor Overhaul Kit Assembly Briggs and Stratton 350447-1332-E1	..... 54
Section 3 Assembly No. 105-3803	..... 24	Attachments and Accessories List	..... 55
Section 4 Assembly No. 105-3804	..... 25		
Section 5 Assembly No. 93-1386	..... 26		
Engine Installation Assembly	..... 27		
Hydraulic Pump Installation Assembly	..... 28		
Frame Assembly	..... 29		
Rear Wheel Assembly	..... 31		
Hydraulic Cylinder Assembly No. 83-2330	..... 32		
Control Panel Assembly	..... 33		
Hydraulic Reservoir Assembly	..... 34		
Fuel Tank Assembly	..... 35		
Reel Motor Installation Assembly	..... 36		
Hydraulic Motor Assembly No. 105-9770	..... 37		
Electrical Schematic	..... 38		

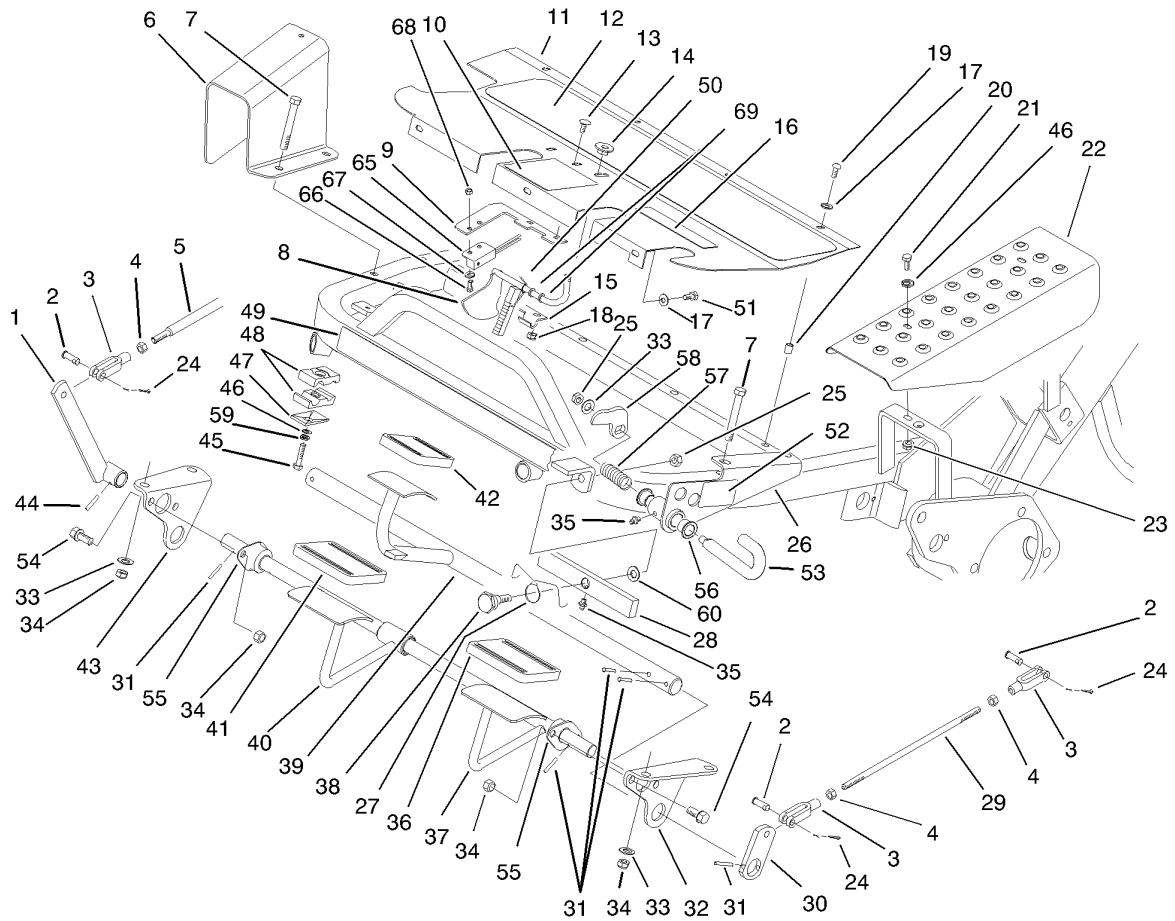
## Part Description Abbreviations

Part descriptions in this catalog may include the following abbreviations.

AR. ....	as required	HYD. ....	hydraulic
ASM. ....	assembly	INC. ....	incorporated
CARR. ....	carriage	LH. ....	left hand
DEG. ....	degrees	NI. ....	nylon insert
FH. ....	flat head	PPH. ....	phillips pan head
GA. ....	gauge	PTH. ....	phillips truss head
HF. ....	hex flange	PTO. ....	power take off
HH. ....	hex head	RH. ....	right hand
HHF. ....	hex head flange	SFH. ....	slotted fillister head
HHFTF. ....	hex head flange thread forming	SHH. ....	slotted hex head
HJ. ....	hex jam	SHWH. ....	slotted hex washer head
HLH. ....	hex lag head	SPH. ....	slotted pan head
HOC. ....	height-of-cut	SQH. ....	square head
HS. ....	hex	SRH. ....	slotted round head
HSBH. ....	hex socket button head	STD. ....	standard
HSFH. ....	hex socket flat head	TAP. ....	self tapping
HSH. ....	hex socket head	TTH. ....	torx truss head
HWH. ....	hex washer head	WH. ....	wing head
HWHTF. ....	hex washer head thread forming		

## Footnotes

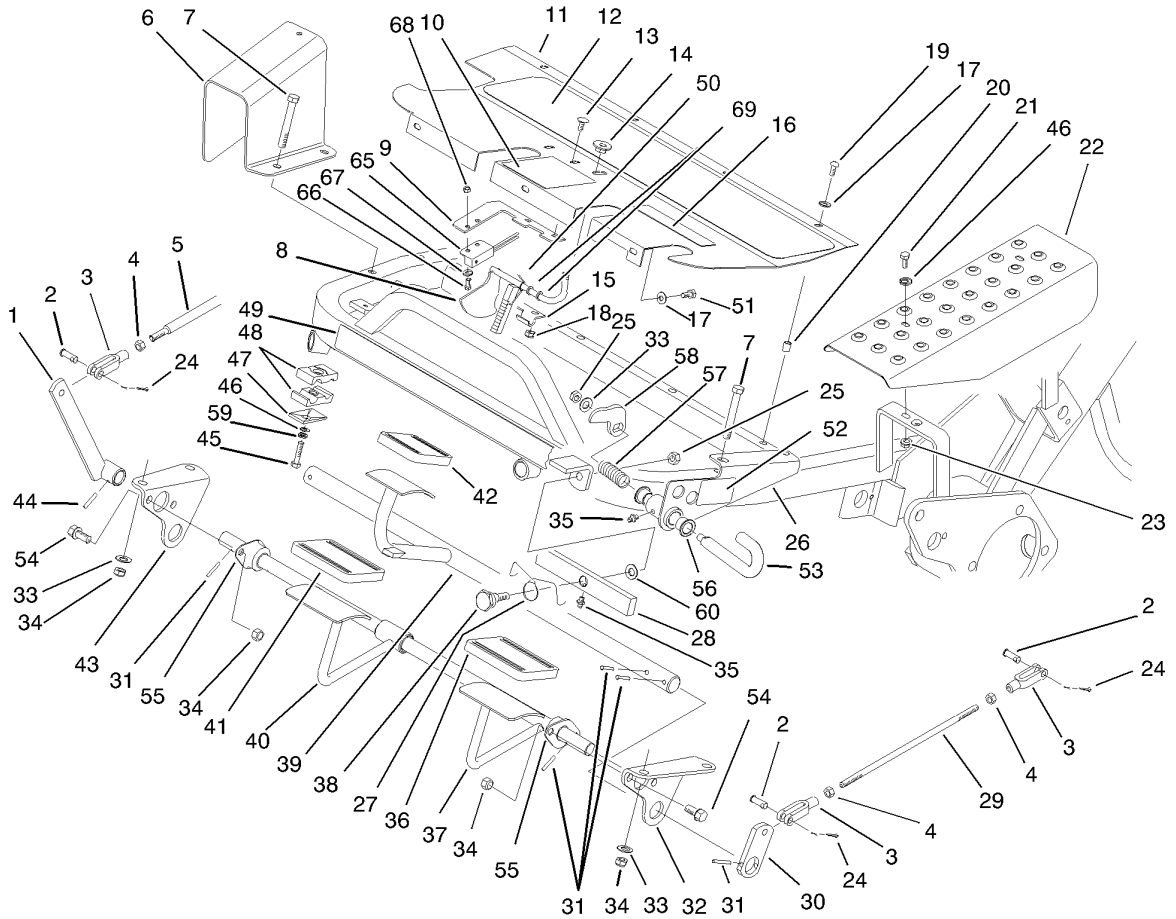
- |   |  |   |   |
|---|--|---|---|
| ❶ | Not illustrated                                  | ❷ | Not serviced separately                               |
| ❸ | Included in Engine Gasket Set-Ref. 358.          | ❹ | Included in Carburetor Overhaul Kit-Ref. 121.         |
| ❺ | Included in Valve Overhaul Gasket Set-Ref. 1095. | ❻ | Obtain parts from your local Briggs & Stratton dealer |



## Control Pedal Assembly

Ref	Part No.	Qty.	Description
1	49-6200-01	1	Lever-Cutting
2	283-61	5	Pin-Yoke
3	282-2	5	Yoke
4	3220-2	5	Nut-Jam
5	49-5430	1	Rod-Control
6	49-6110-01	1	Guard-Trans Rod
7	323-13	4	Screw-HH
8	100-9819	1	Latch ASM
9	100-9821	1	Plate-Switch, Reed
10	93-8062	1	Decal-Brake, Parking
11	83-0640-01	1	Plate-Footrest
12	49-6120	1	Pad-Footrest
13	3229-11	2	Screw-CARR
14	32141-111	1	Nut-Adjusting
15	95-1629	1	Hinge-Lower
16	93-8075	1	Decal-Mow/lift
17	3256-1	7	Washer-Flat
18	3296-16	2	Nut-Lock, NI
19	3274-31	4	Screw-HSBH
20	32148-6	8	Insert-Nut
21	321-4	2	Screw-HH
22	83-0200-01	1	Plate-Cover, LH
23	32128-33	2	Nut-HF
24	3272-6	5	Pin-Cotter

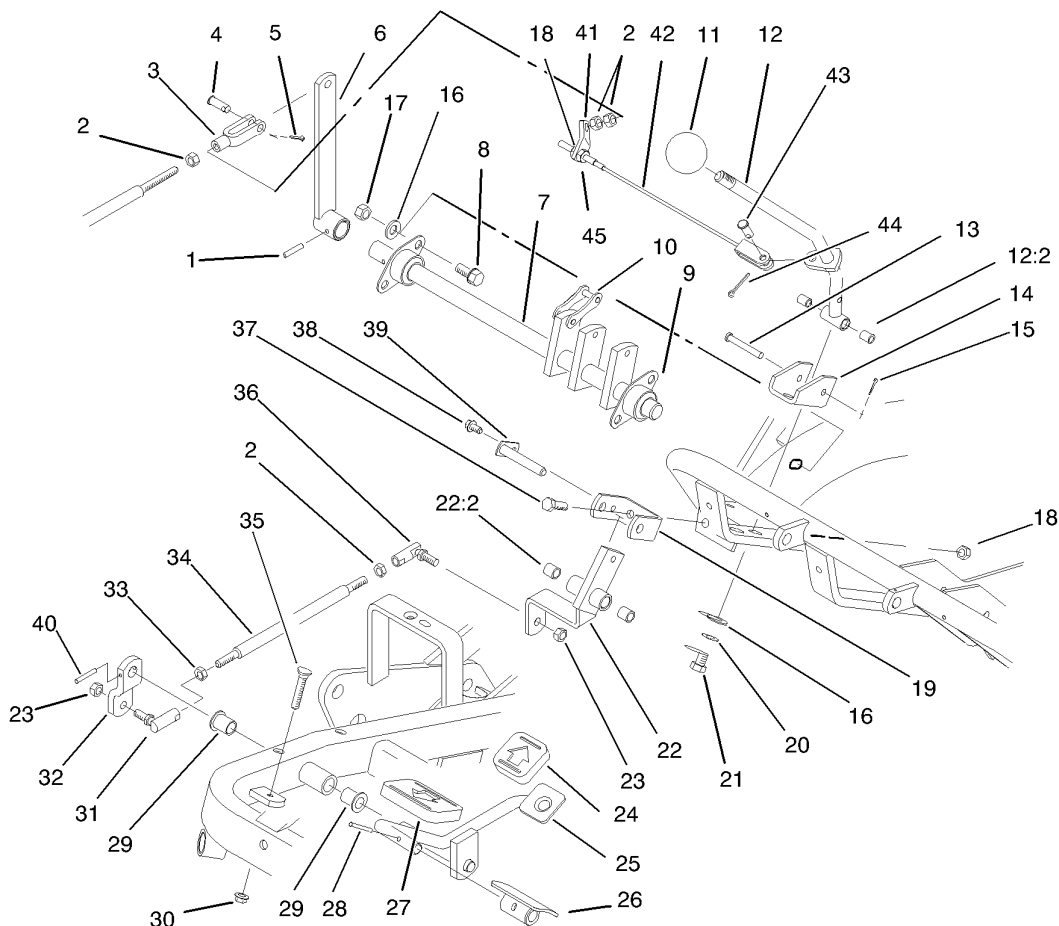
Ref	Part No.	Qty.	Description
25	3296-39	2	Nut-Lock, NI
26	93-9901-01	1	Bracket-Lockout, Mow
27	83-0080	1	Spring-Pivot, Lift
28	106-6396	1	Lift-Pivot
29	27-2270	2	Rod-Adjustment, Brake
30	10-8100-01	2	Strap-Shaft, Brake
31	32121-35	8	Pin-Roll
32	88-9640-01	1	Bracket-Lift Pivot, LH
33	3256-24	5	Washer-Flat
34	3296-59	8	Nut-Lock, NI
35	302-5	2	Fitting-Grease
36	93-7631	1	Pad-Foot, Lift
37	106-6395	1	Cutting Control Shaft ASM
38	83-2590	1	Bolt-Shoulder, Pivot
39	83-0160	1	Shaft-Brake
40	106-6394	1	Mow Pedal ASM
41	93-7630	1	Pad-Foot
42	93-7629	1	Pad-Foot, Brake
43	88-9630-01	1	Bracket-Lift Pivot, RH
44	32121-6	1	Pin-Roll, Slotted
45	321-11	1	Screw-HH
46	3256-22	3	Washer-Flat
47	69-9760	1	Coverplate
48	56-7970	2	Clamp-Tube



### Control Pedal Assembly (continued)

Ref	Part No.	Qty.	Description
49	88-9620	1	Decal
50	10-8140	1	Spring-Latch, Brake
51	321-3	3	Screw-HH
52	93-9898	1	Decal-Lock
53	93-9903	1	Pin-Mow, Lockout
54	3234-1	4	Screw-HHF
55	27-2320	2	Bearing
56	3-1506	2	Bushing
57	76-0410	1	Spring-Compression
58	93-9904	1	Arm-Mow, Lockout
59	3253-3	1	Washer-Lock
60	80-7730	1	Spacer
65	104-2057	1	Sensor
66	48-7620	2	Screw-HH
67	33093-00	2	Washer-Flat
68	49-7810	2	Nut-Lock
69	75-5470	2	Spacer-Bearing
●99	93-6691	3	Decal-Bolt, Eccentric

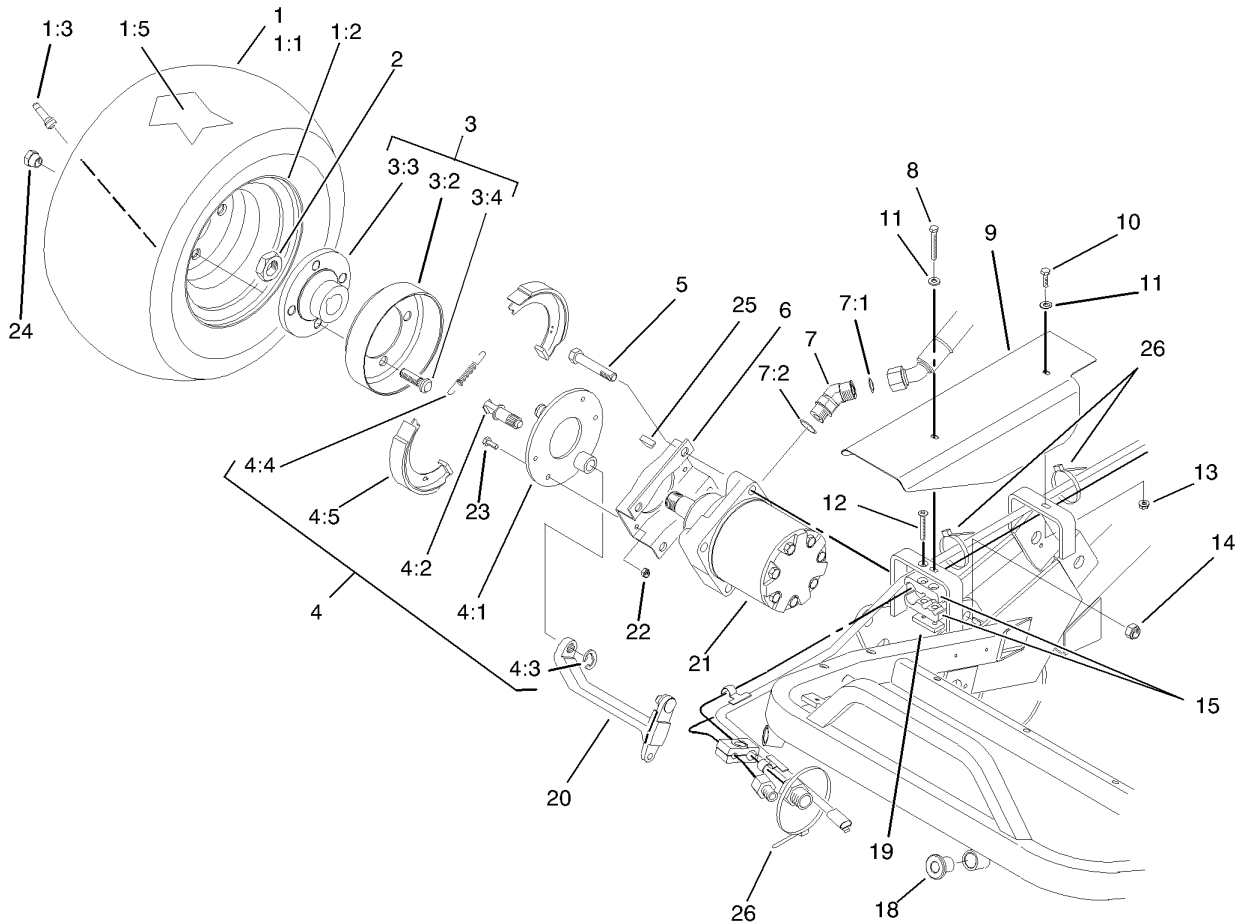
--	--	--	--



## Traction Control Assembly

Ref	Part No.	Qty.	Description
1	32121-6	1	Pin-Roll, Slotted
2	3220-2	4	Nut-Jam
3	282-2	1	Yoke
4	283-61	1	Pin-Yoke
5	3272-6	1	Pin-Cotter
6	47-5320-01	1	Lever
7	44-0870	1	Cam Shaft ASM
8	3234-1	4	Screw-HHF
9	27-2320	2	Bearing
10	57-6220	5	Link-Connecting
11	233-48	1	Knob
12	93-9934	1	Handle-Traction
12:2	256-251	2	Bushing
13	283-57	1	Pin
14	49-6220	1	Bracket-Arm, Control
15	3272-4	1	Pin-Cotter
16	3256-24	6	Washer-Flat
17	3296-59	4	Nut-Lock, NI
18	3296-29	3	Nut-Lock, NI
19	49-6250	1	Bracket-Pivot
20	3254-6	2	Washer-Lock, Internal
21	3211-2	2	Screw-HH
22	49-6260	1	Pivot ASM
22:2	256-2	2	Bushing

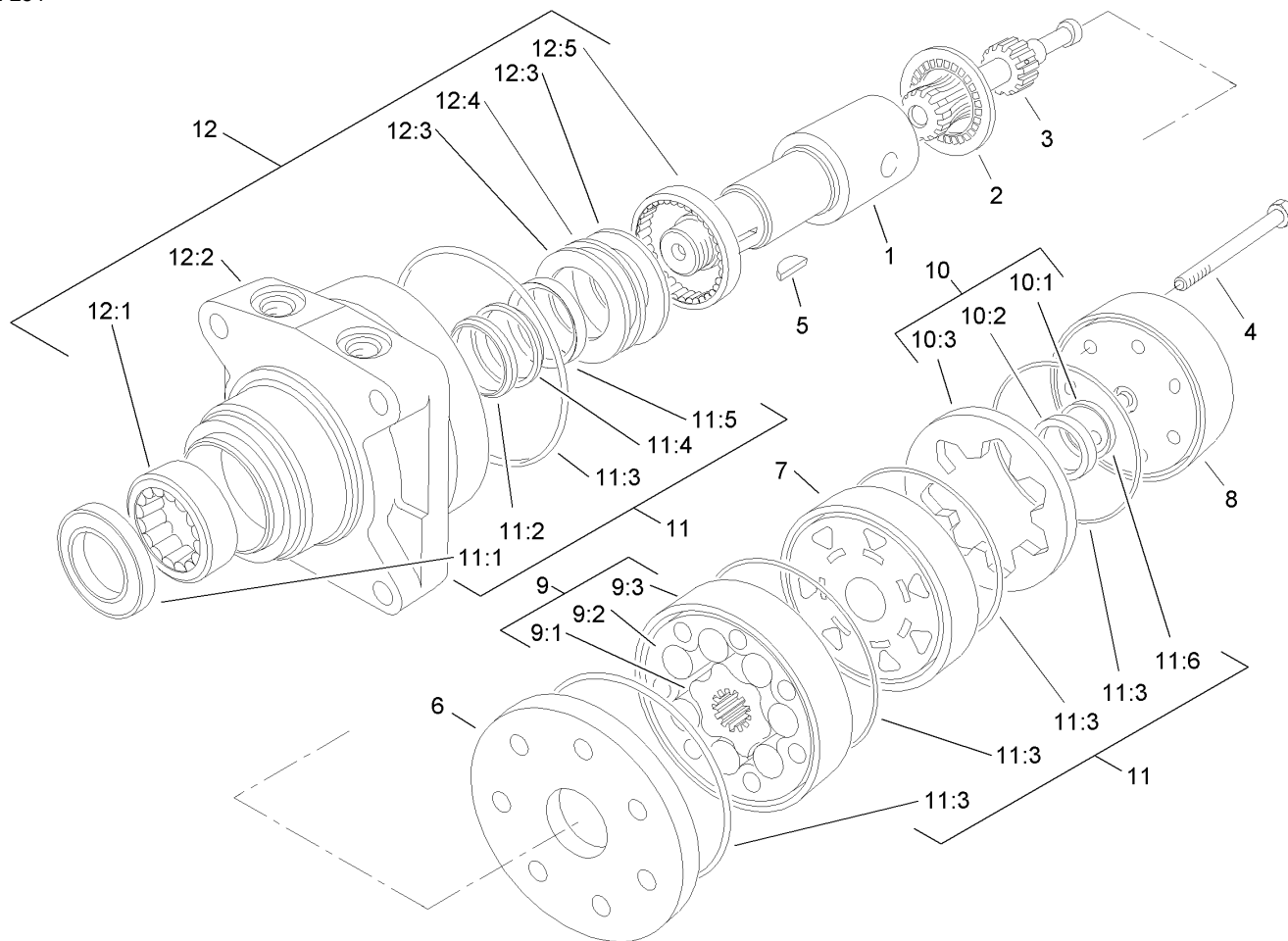
Ref	Part No.	Qty.	Description
23	3296-4	2	Nut-Lock
24	74-9110	1	Pad-Pedal, Reverse
25	83-0540-01	1	Traction Pedal ASM
26	49-6440-03	1	Pedal-Forward
27	74-9100	1	Pad-Pedal, Forward
28	32121-45	1	Pin-Spring
29	256-155	2	Bushing-Flange
30	32128-20	1	Nut-HF
31	2411-42	1	Joint-Ball, LH
32	83-0630	1	Arm-Pivot, Traction
33	3220-20	1	Nut-Jam
34	83-0580	1	Rod-Control, Traction
35	17-9420	1	Screw-Handle
36	2411-43	1	Joint-Ball
37	322-5	2	Screw-HH
38	12-3270	1	Screw
39	49-6290	1	Pivot Shaft ASM
40	32121-51	1	Pin-Roll
41	93-9936	1	Bracket-Return, Traction
42	93-9937	1	Traction Cable ASM
43	283-62	1	Pin-Clevis
44	3272-10	1	Pin-Cotter
45	3217-6	1	Nut-Hex



## Front Wheel and Brake Assembly

Ref	Part No.	Qty.	Description
①		2	Wheel & Tire ASM
1:1	28-3680	1	Tire
1:2	217-60	1	Rim
1:3	232-27	1	Stem-Valve
1:5	232-37	1	Tube
2	26-3790	2	Nut-Lock
3	10-6821	2	Brake Drum ASM
3:2	10-6850	1	Drum-Brake
3:3	10-6870-03	1	Hub-Wheel
3:4	85-6540	4	Stud-Drive
4	104-7705	2	Brake ASM
4:1	70-9870	1	Plate-Backing
4:2	104-7707	1	Shaft-Cam, Brake
4:3	104-7706	1	E Ring-Bowed
4:4	70-9880	2	Spring-Return
4:5	70-9840	2	Shoe-Brake
5	325-11	8	Screw-HH
6	84-2000-03	2	Bracket-Brake
7	340-14	4	Fitting-Hyd, 45 DEG
7:1	237-65	1	O-Ring
7:2	237-80	1	O-Ring
8	321-11	1	Screw-HH
9	83-0190-01	1	Cover-RH
10	321-4	1	Screw-HH

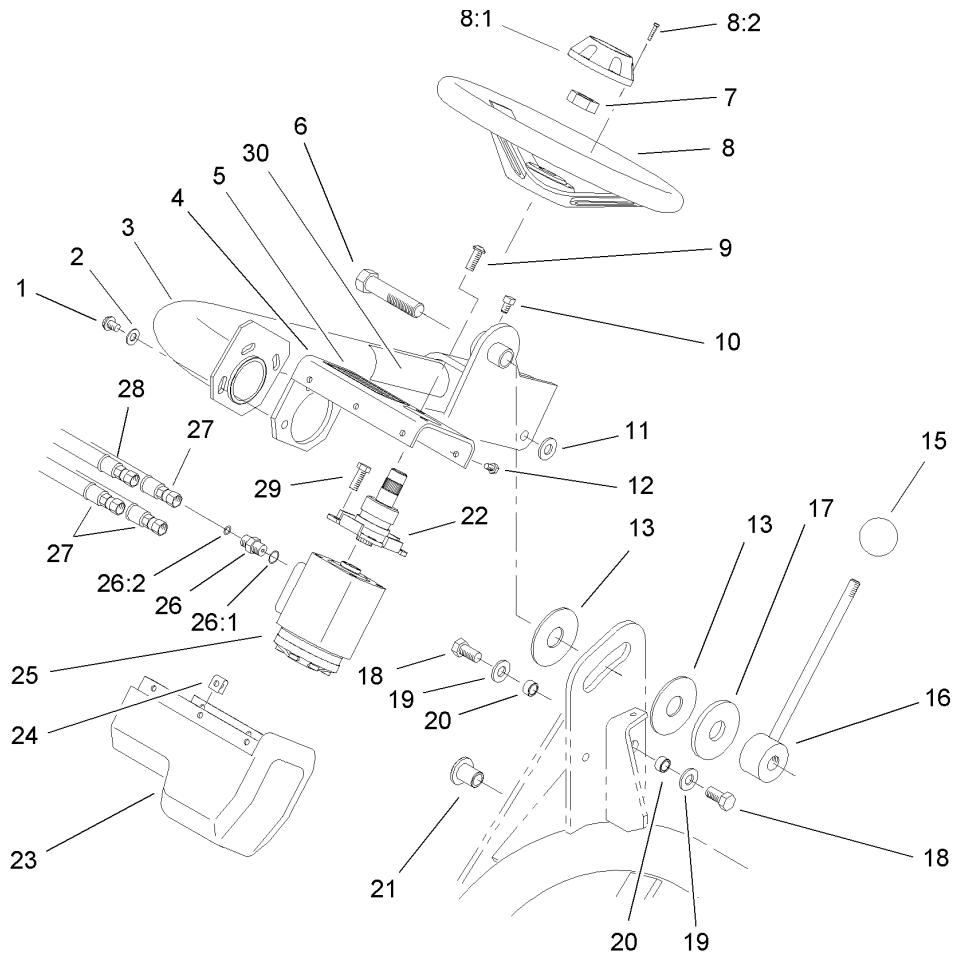
Ref	Part No.	Qty.	Description
11	3256-22	2	Washer-Flat
12	32108-100	1	Screw-FH
13	32128-33	1	Nut-HF
14	3296-23	8	Nut-Lock, NI
15	57-6140	2	Clamp-Tube, Half
18	83-1700	2	Bushing-Flange
19	83-1220	1	Plate-Clamp
20	93-2096	2	Lever-Brake
21	92-9199	2	Motor-Wheel, HYD
22	3296-42	8	Nut-Lock, NI
23	321-5	8	Screw-HH
24	242-50	8	Nut-Lug
25	3257-42	2	Key-Woodruff
26	3290-378	3	Tie-Cable



## Hydraulic Wheel Motor Assembly No. 92-9199

Ref	Part No.	Qty.	Description
1	76-0860	1	Shaft-Coupling
2	76-0850	1	Bearing-Thrust
3	92-9761	1	Link-Drive
4	92-9762	7	Screw-HH
5	3257-42	1	Key-Woodruff
6	76-0870	1	Plate-Wear
7	76-0840	1	Manifold
8	76-0940	1	End Cover ASM
9	92-9763	1	Rotor Set
●9:1		1	Rotor
●9:2		1	Vane
●9:3		1	Stator
10	76-0880	1	Commutator ASM
●10:1		1	Seal-Commutator
●10:2		1	Commutator
●10:3		1	Ring-Commutator
11	94-8178	1	Seal Kit
●11:1		1	Seal-Dirt & Water
●11:2		1	Washer-Backup
●11:3		5	Seal-Ring
●11:4		1	Washer-Backup
●11:5		1	Seal-Inner
●11:6		1	Seal-Commutator
12	76-0810	1	Housing ASM

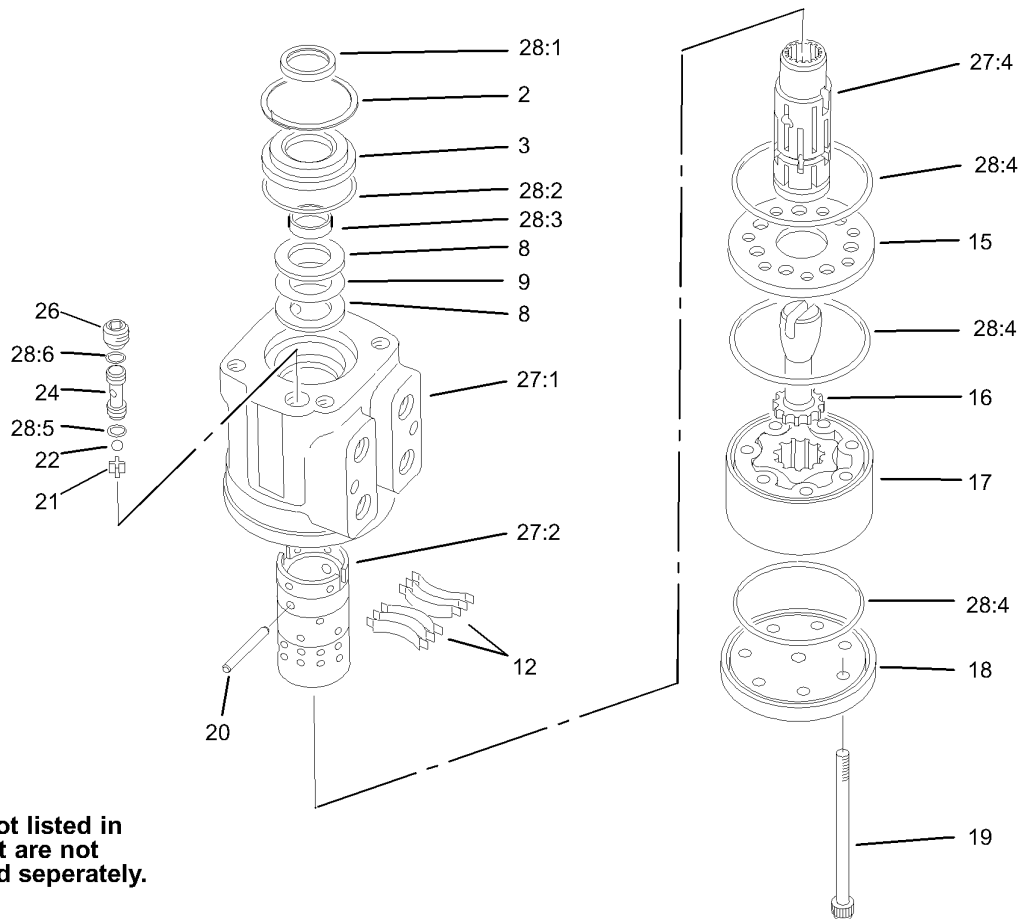
Ref	Part No.	Qty.	Description
●12:1		1	Bearing
●12:2		1	Housing
●12:3		2	Washer-Thrust
●12:4		1	Bearing-Thrust
●12:5		1	Bearing



## Steering Arm Assembly

Ref	Part No.	Qty.	Description
1	3274-80	3	Screw-HH
2	3256-80	3	Washer-Flat
3	107-9542-01	1	Steering Arm
4	83-0780-03	1	Support-Valve, Steering
5	104-2053	1	Decal-Warning
5	93-8063	1	Decal-Caution, Ce
6	83-0750	1	Capscrew-Hh, LH Thread
7	107-2561	1	Nut-Hex
8	68-5130	1	Wheel-Steering
8:1	68-5140	1	Cap-Wheel, Steering
8:2	32144-21	1	Screw
9	3274-63	2	Screw-HSBH
10	3242-2	1	Screw-SQH
11	65-6390	1	Washer-Thrust, Plain
12	3274-39	6	Screw-HSBH
13	83-0740	2	Disc-Friction
15	233-48	1	Knob
16	83-0700-03	1	Handle-Lockup
17	83-0760	1	Spacer-Plate, Lockup
18	325-4	2	Screw-HH
19	3256-26	2	Washer-Flat
20	47-2890	2	Bushing
21	83-1700	1	Bushing-Flange
22	83-1420	1	Column-Steering

Ref	Part No.	Qty.	Description
23	83-0810	1	Cover-Steering
24	3290-277	6	Nut-Speed
25	92-8690	1	Steering Control Valve ASM
26	340-1	4	Adapter
26:1	237-21	1	O-Ring
26:2	237-42	1	O-Ring
27	83-1350	3	Hose-HYD
28	83-1360	1	Hose-HYD
29	323-4	2	Screw-HH
30	93-8068	1	Decal-Arm, Steering

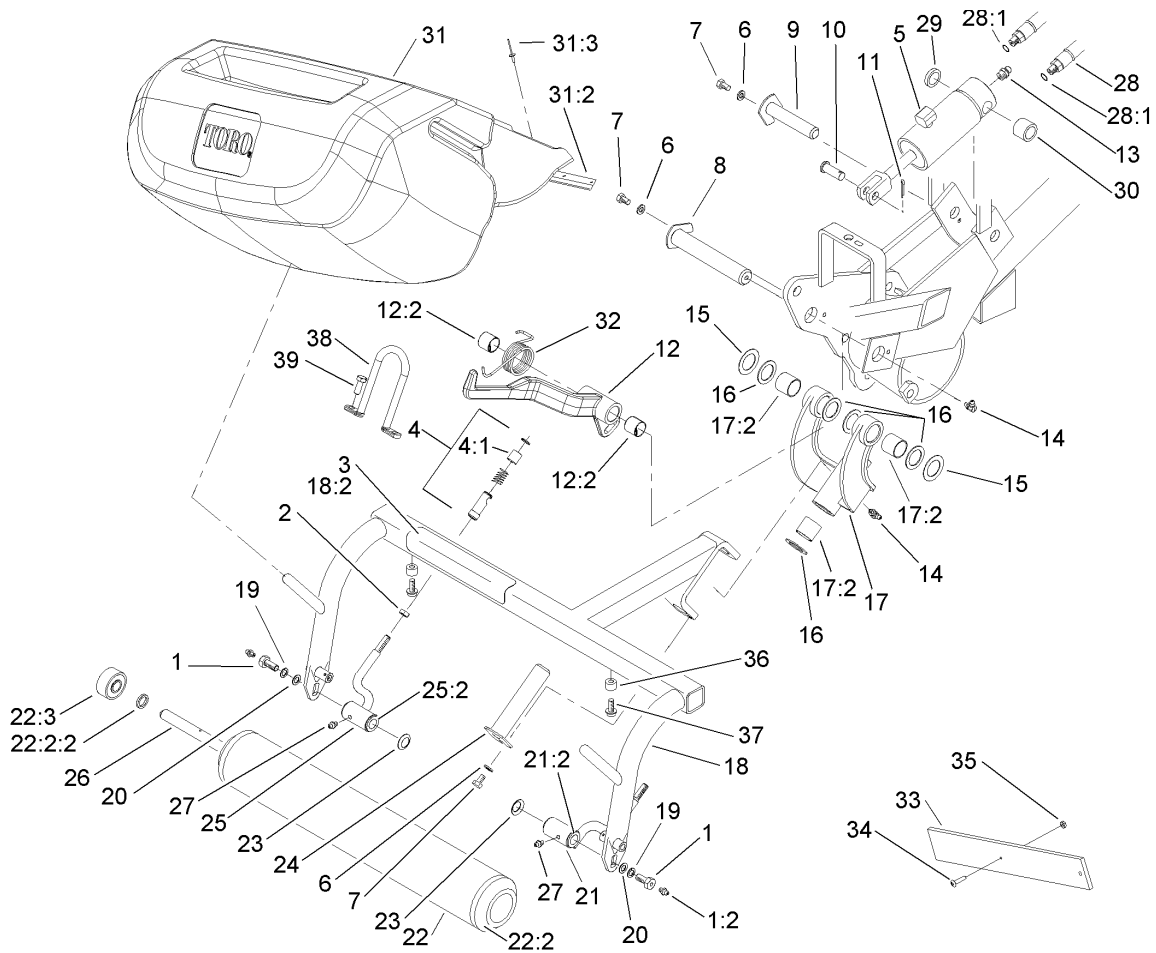


Parts not listed in partslist are not serviced seperately.

## Power Steering Valve Assembly No. 92-8690

Ref	Part No.	Qty.	Description
2	52-9230	1	Ring-Retaining
3	92-8691	1	Bushing
8	59-6730	2	Race
9	59-6740	1	Bearing
12	83-1860	1	Spring Centering Kit
15	92-8697	1	Plate-Wear
16	70-8250	1	Drive
17	83-1870	1	Gerotor Sub ASM
18	92-8694	1	Cap-End
19	92-8696	7	Screw-Head, Torx
20	59-6830	1	Centering Pin Kit
21	52-9290	1	Retainer-Checkball
22	52-9280	1	Checkball
24	52-9270	1	Seat-Checkball
26	52-9260	1	Screw-Set
27	83-1880	1	Control Parts ASM
27:1		1	Housing
27:2		1	Sleeve-Control
27:4		1	Spool-Control
28	92-9749	1	Seal Kit
28:1		1	Seal-Dust
28:2		1	O-Ring
28:3		1	O-Ring
28:4		3	O-Ring

Ref	Part No.	Qty.	Description
28:5		1	O-Ring
28:6		1	O-Ring



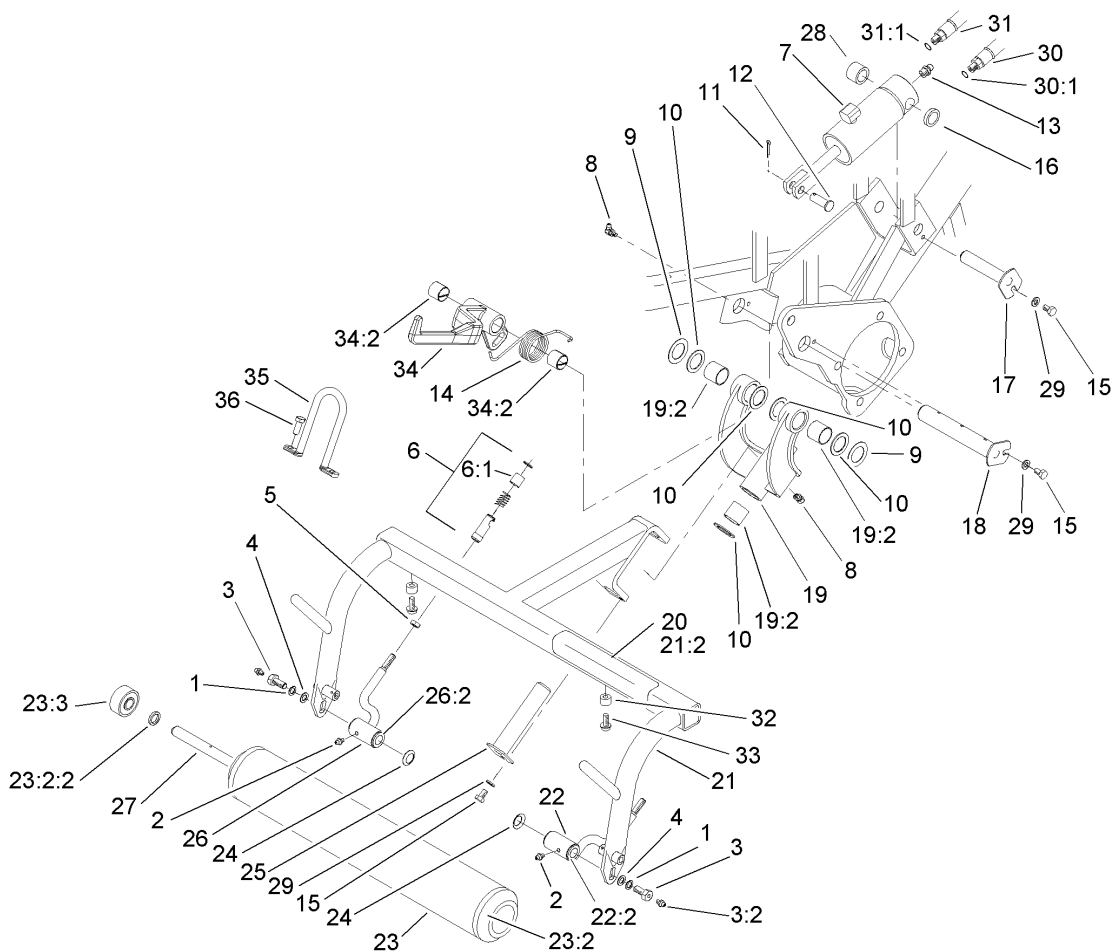
## Right Hand Pull Frame Assembly

Ref	Part No.	Qty.	Description
1	11-0160	2	Roller Shaft Screw ASM
1:2	302-5	1	Fitting-Grease
2	3220-3	2	Nut-Jam
3	93-8064	1	Decal-Danger, Ce
4	99-1460	2	Ball Joint Receiver ASM
4:1	99-1461	1	Sleeve-Joint, Ball
5	106-9066	1	HYD Cylinder ASM
6	3256-23	3	Washer-Flat
7	322-1	3	Screw-HH
8	10-6110	1	Pin-Hinge
9	10-6060	1	Pin-Pivot, Ram
10	283-8	1	Pin-Clevis
11	3272-11	1	Pin-Cotter
12	107-2599	1	RH Lift Arm ASM
12:2	3-0348	2	Bushing
13	302-2	1	Fitting-Grease
14	302-60	2	Fitting-Grease
15	5-1226	2	Washer
16	10-8110	6	Washer-Thrust
17	10-7820	1	Pivot Hinge ASM
17:2	3-0348	4	Bushing
18	104-2055	1	Right Pull Frame ASM
18:2	62-5070	1	Decal-Warning
19	3253-21	2	Washer-Lock

Ref	Part No.	Qty.	Description
20	3256-24	2	Washer-Flat
21	92-0586	1	Pull Arm ASM
21:2	3-1506	2	Bushing
22	99-4277	1	Roller ASM
22:2	253-83	2	Hub Yoke ASM
22:2:2	253-83	1	Seal-Oil
22:3	251-141	2	Bearing-Ball
23	3290-317	2	Washer-Spring
24	10-6090	1	Pin-Pivot
25	92-0585	1	Pull Arm ASM
25:2	3-1506	2	Bushing
26	21-8470	1	Shaft-Roller
27	302-5	2	Fitting-Grease
28	92-9767	2	Hose
28:1	237-78	1	O-Ring
29	105-3828	1	Spacer
30	74-3730	1	Spacer-Spindle, Rear
31	107-9518	3	Grass Basket ASM
31:2	104-2607	1	Strip-Basket
31:3	3290-382	8	Rivet-Pop
32	106-9078	1	Spring-Torsion, RH
33	65-8320	1	Bar-Gauge
34	32122-22	1	Screw-HH
35	3219-14	1	Nut-Hex



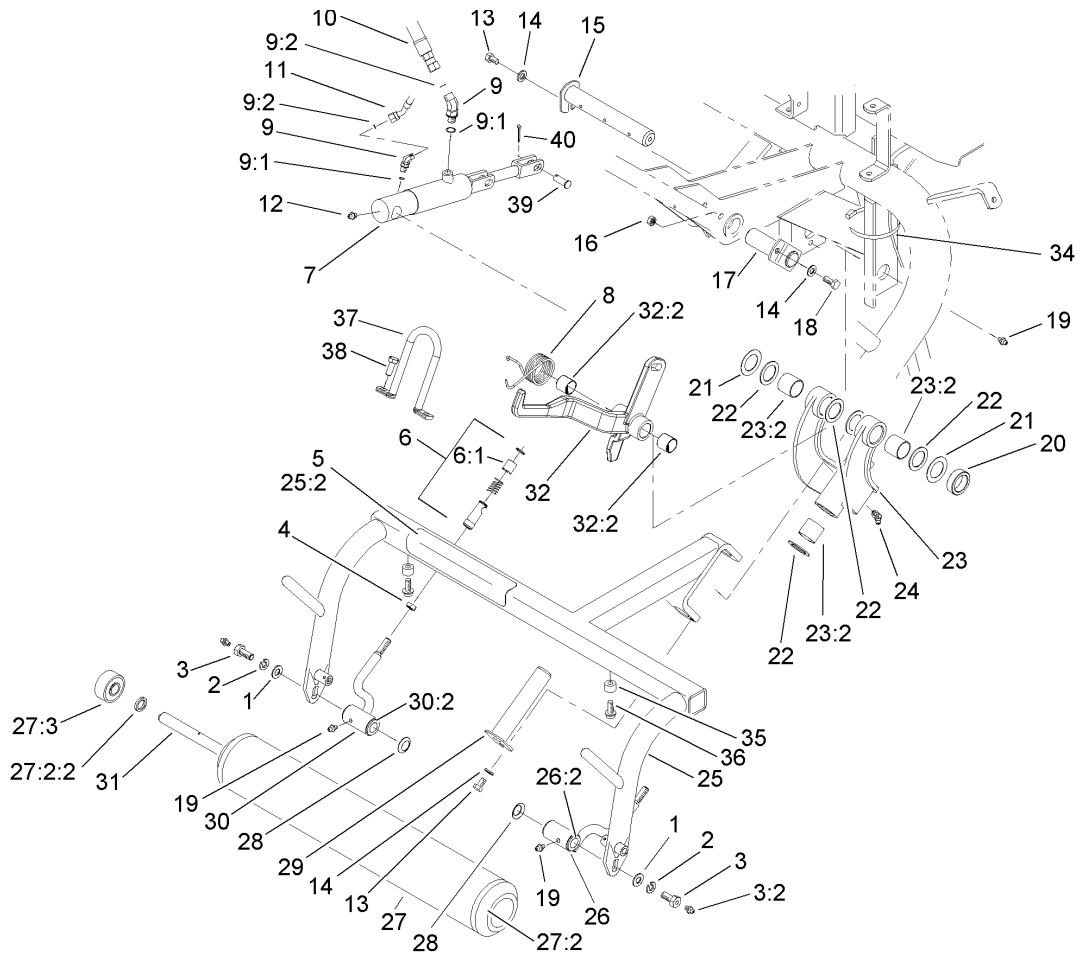




### Left Hand Pull Frame Assembly

Ref	Part No.	Qty.	Description
1	3253-21	2	Washer-Lock
2	302-5	2	Fitting-Grease
3	11-0160	2	Roller Shaft Screw ASM
3:2	302-5	1	Fitting-Grease
4	3256-24	2	Washer-Flat
5	3220-3	2	Nut-Jam
6	99-1460	2	Ball Joint Receiver ASM
6:1	99-1461	1	Sleeve-Joint, Ball
7	106-9066	1	HYD Cylinder ASM
8	302-60	2	Fitting-Grease
9	5-1226	2	Washer
10	10-8110	6	Washer-Thrust
11	3272-11	1	Pin-Cotter
12	283-8	1	Pin-Clevis
13	302-2	1	Fitting-Grease
14	106-9079	1	Spring-Torsion, LH
15	322-1	3	Screw-HH
16	105-3828	1	Spacer
17	10-6060	1	Pin-Pivot, Ram
18	10-6110	1	Pin-Hinge
19	10-7820	1	Pivot Hinge ASM
19:2	3-0348	4	Bushing
20	93-8064	1	Decal-Danger, Ce
21	104-2054	1	Left Pull Frame ASM

Ref	Part No.	Qty.	Description
21:2	62-5070	1	Decal-Warning
22	92-0586	1	Pull Arm ASM
22:2	3-1506	2	Bushing
23	99-4277	1	Roller ASM
23:2	253-83	2	Hub Yoke ASM
23:2:2	253-83	1	Seal-Oil
23:3	251-141	2	Bearing-Ball
24	3290-317	2	Washer-Spring
25	10-6090	1	Pin-Pivot
26	92-0585	1	Pull Arm ASM
26:2	3-1506	2	Bushing
27	21-8470	1	Shaft-Roller
28	74-3730	1	Spacer-Spindle, Rear
29	3256-23	3	Washer-Flat
30	83-1690	1	Hose-HYD
30:1	237-78	1	O-Ring
31	63-3850	1	Hose ASM
31:1	237-78	1	O-Ring
32	94-4548	2	Bumper-Recessed
33	32144-44	2	Screw-HWH
34	107-2598	1	LH Lift Arm ASM
34:2	3-0348	2	Bushing
35	105-5740	1	Hook-Lift
36	33115-025	2	Screw-HH



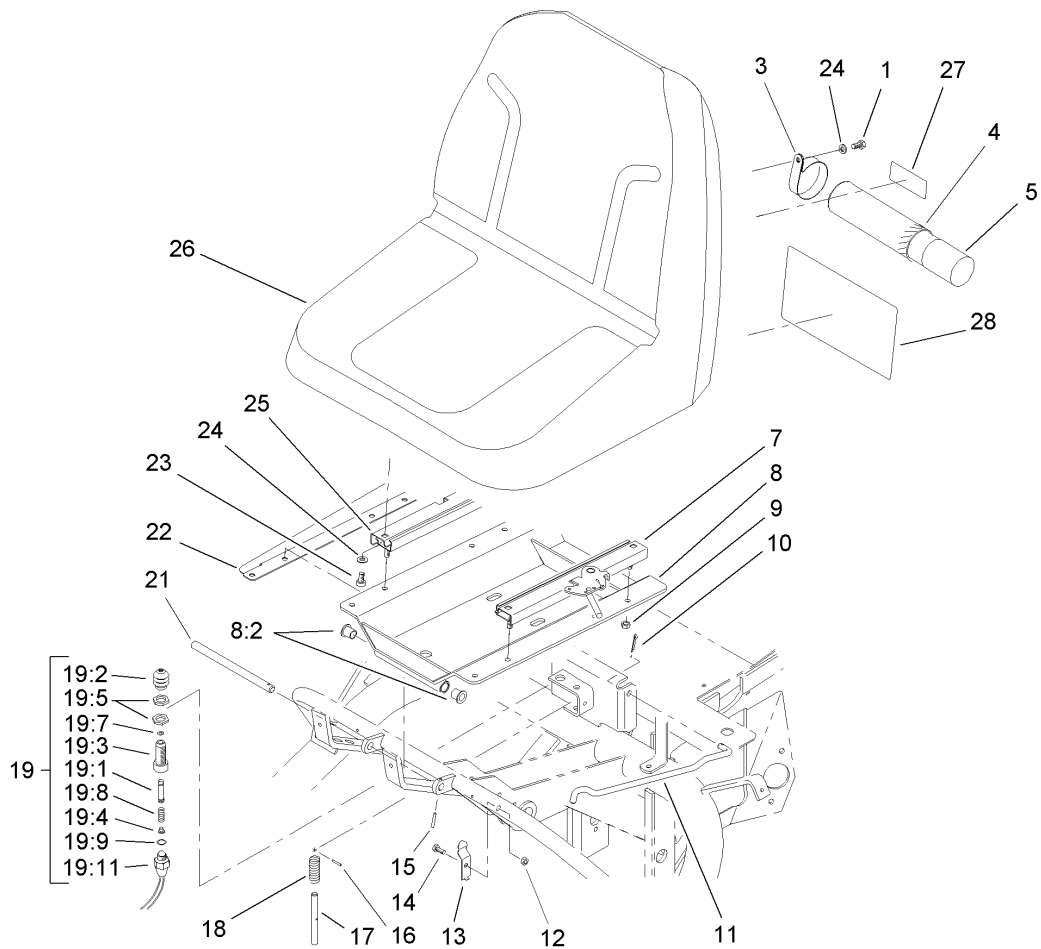
## Rear Pull Frame Assembly

Ref	Part No.	Qty.	Description
1	3256-24	2	Washer-Flat
2	3253-21	2	Washer-Lock
3	11-0160	2	Roller Shaft Screw ASM
3:2	302-5	1	Fitting-Grease
4	3220-3	2	Nut-Jam
5	93-8064	1	Decal-Danger, Ce
6	99-1460	2	Ball Joint Receiver ASM
6:1	99-1461	1	Sleeve-Joint, Ball
7	106-9064	1	HYD Cylinder ASM
8	106-9080	1	Spring-Torsion, Center
9	340-103	2	Fitting-Hyd, 45 DEG
9:1	237-78	1	O-Ring
9:2	237-21	1	O-Ring
10	83-1680	1	Hose-HYD
11	88-9700	1	Hose-HYD
12	302-2	1	Fitting-Grease
13	322-1	2	Screw-HH
14	3256-23	3	Washer-Flat
15	27-2550	1	Pin-Hinge
16	3296-29	1	Nut-Lock, NI
17	68-5560	1	Pin-Cylinder, Pivot
18	322-3	1	Screw-HH
19	302-5	3	Fitting-Grease
20	93-2384	1	Spacer-Carrier

Ref	Part No.	Qty.	Description
21	5-1226	2	Washer
22	10-8110	6	Washer-Thrust
23	105-0452	1	Pivot Hinge ASM
23:2	3-0348	4	Bushing
24	302-60	1	Fitting-Grease
25	105-0451	1	Rear Pull Frame ASM
25:2	62-5070	1	Decal-Warning
26	92-0586	1	Pull Arm ASM
26:2	3-1506	2	Bushing
27	99-4277	1	Roller ASM
27:2		2	Hub Yoke ASM
27:2:2	253-83	1	Seal-Oil
27:3	251-141	2	Bearing-Ball
28	3290-317	2	Washer-Spring
29	10-6090	1	Pin-Pivot
30	92-0585	1	Pull Arm ASM
30:2	3-1506	2	Bushing
31	21-8470	1	Shaft-Roller
32	107-9500	1	Center Lift Arm ASM
32:2	3-0348	2	Bushing
34	3290-379	1	Tie-Cable
35	94-4548	2	Bumper-Recessed
36	32144-44	2	Screw-HWH
37	105-5740	1	Hook-Lift



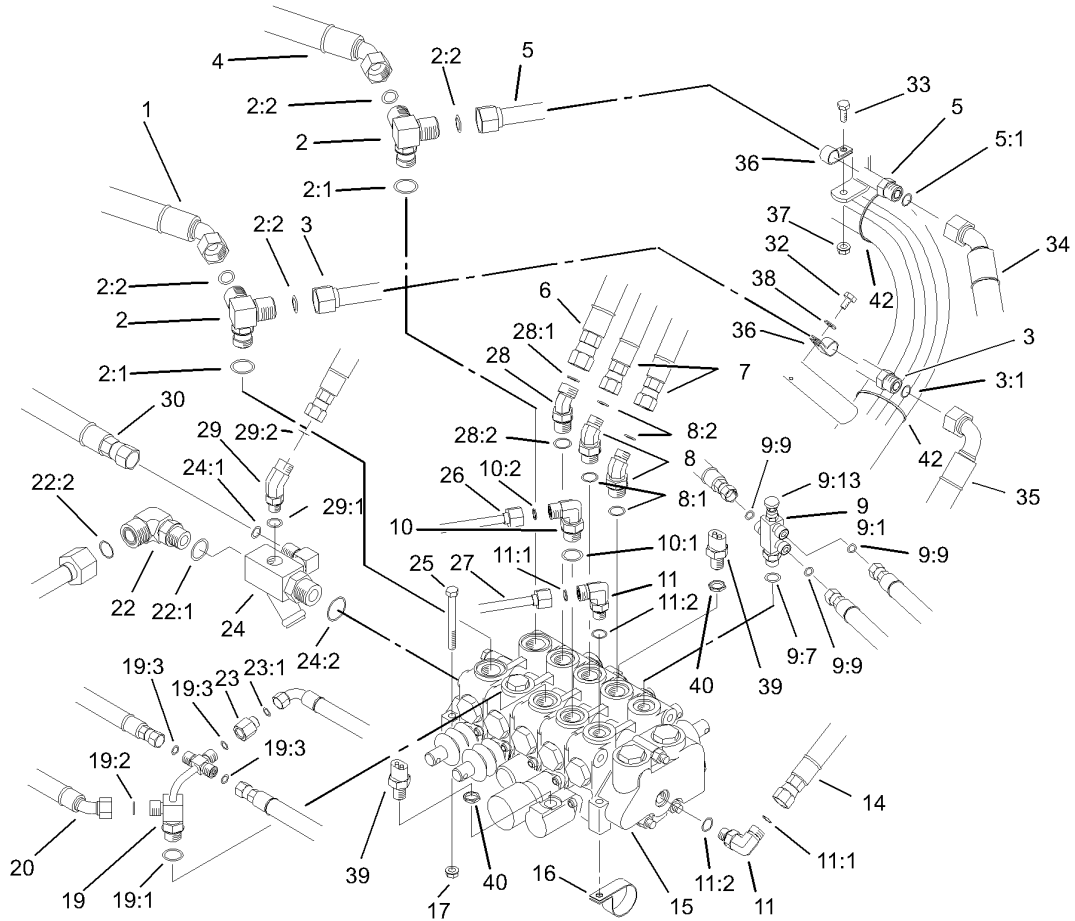




## Seat Assembly

Ref	Part No.	Qty.	Description
1	322-2	2	Screw-HH
3	2412-133	2	R-Clamp
4	104-7050	1	Housing-Manual
5	104-7048	1	Cap-Housing
7	51-0790	1	Adjuster-Seat, LH
8	83-1270	1	Seat Support ASM
8:2	256-155	2	Bushing-Flange
9	3296-29	4	Nut-Lock, NI
10	3272-11	1	Pin-Cotter
11	68-5100	1	Rod-Seat, Prop
12	3296-16	1	Nut-Lock, NI
13	68-5310	1	Clip-Rod, Prop
14	321-3	1	Screw-HH
15	32121-45	1	Pin-Spring
16	3284-3	1	Pin-Grooved
17	51-0350	1	Pin-Spring, Seat
18	3-6685	1	Spring
19	43-9071	1	Limit Switch ASM
19:1	43-8860	1	Plunger-Switch
19:2	43-8870	1	Boot-Switch
19:3	43-8620	1	Pin-Guide, Switch
19:4	43-8610	1	Guide
19:5	218-461	2	Nut-HH
19:7	237-7	1	O-Ring

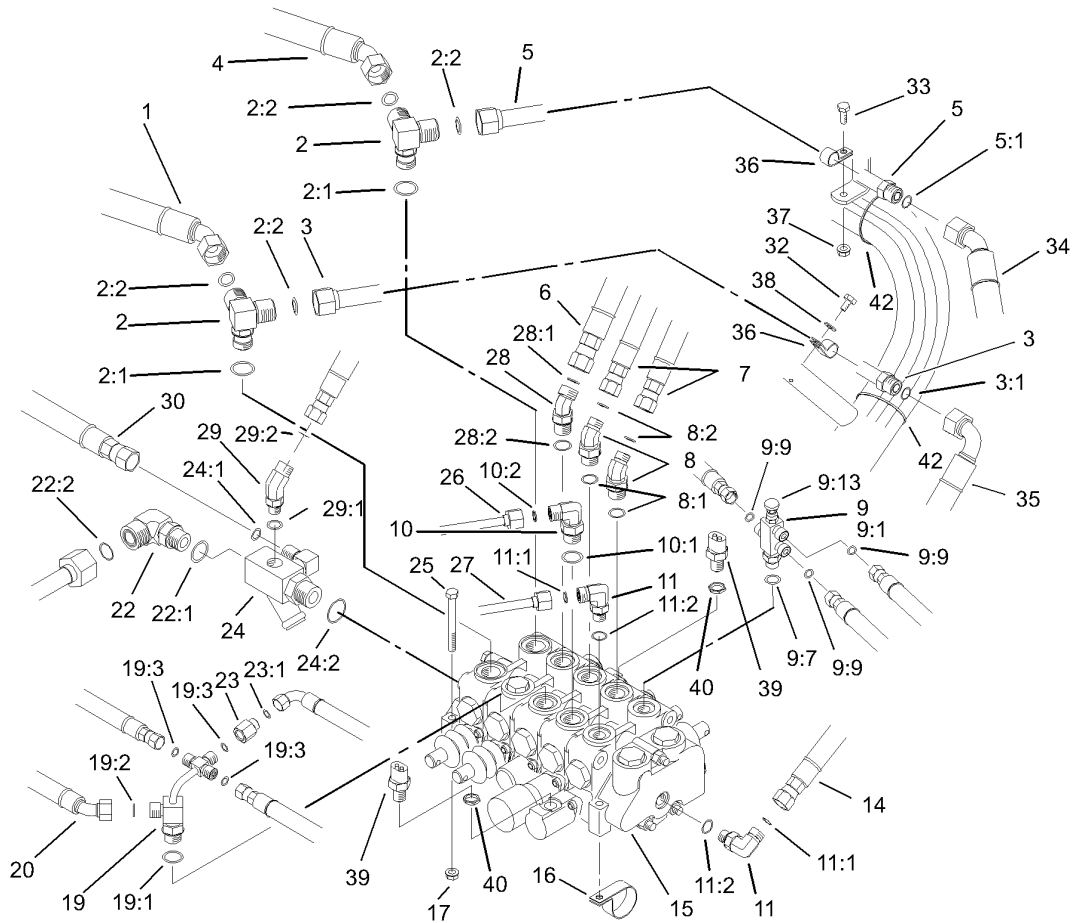
Ref	Part No.	Qty.	Description
19:8	43-8600	1	Spring-Compression
19:9	237-30	1	O-Ring
19:11	72-4320	1	Switch-Ball, N.o.
21	49-5880	1	Shaft-Support, Seat
22	83-1840-01	1	Cover-Valve, RH
23	3274-12	4	Screw-HSH
24	3256-23	6	Washer-Flat
25	51-0780	1	Slider-Seat
26	104-4620	1	Seat-Olympic
27	93-6686	1	Decal-Oil, HYD
28	106-6367	1	Decal-Service
28	106-6368	1	Decal-Service, Japanese
28	106-6369	1	Decal-Service, Spanish
28	106-6370	1	Decal-Service, French
28	106-6371	1	Decal-Service, German
28	106-6372	1	Decal-Service, Swedish
28	106-6375	1	Decal-Service, Norwegian
28	106-6374	1	Decal-Service, Portuguese
28	106-6373	1	Decal-Service, Italian
28	106-6376	1	Decal-Service, Finnish
28	106-6377	1	Decal-Service, Danish
28	106-6378	1	Decal-Service, Dutch



## Control Valve Installation Assembly

Ref	Part No.	Qty.	Description
1	98-0647	1	Hose-HYD
2	63-4050	2	Fitting
2:1	237-80	1	O-Ring
2:2	237-65	2	O-Ring
3	70-7130	1	Line-Tube
3:1	237-65	2	O-Ring
4	98-0646	1	Hose-HYD
5	83-1200	1	Tube-Traction, LH Lower
5:1	237-65	1	O-Ring
6	107-9519	1	HYD Hose ASM
7	98-0649	2	Hose-HYD
8	340-138	2	Fitting-Hyd, 45 DEG
8:1	237-79	1	O-Ring
8:2	237-22	1	O-Ring
9	93-2556	1	Needle Valve ASM
9:1	93-2555	1	Fitting-Body
9:7	237-42	1	O-Ring
9:9	237-21	3	O-Ring
9:13	93-2554	1	Needle ASM
10	340-18	1	Fitting-Hyd, 90 DEG
10:1	237-79	1	O-Ring
10:2	237-22	1	O-Ring
11	340-77	2	Fitting-Hyd, 90 DEG
11:1	237-22	1	O-Ring

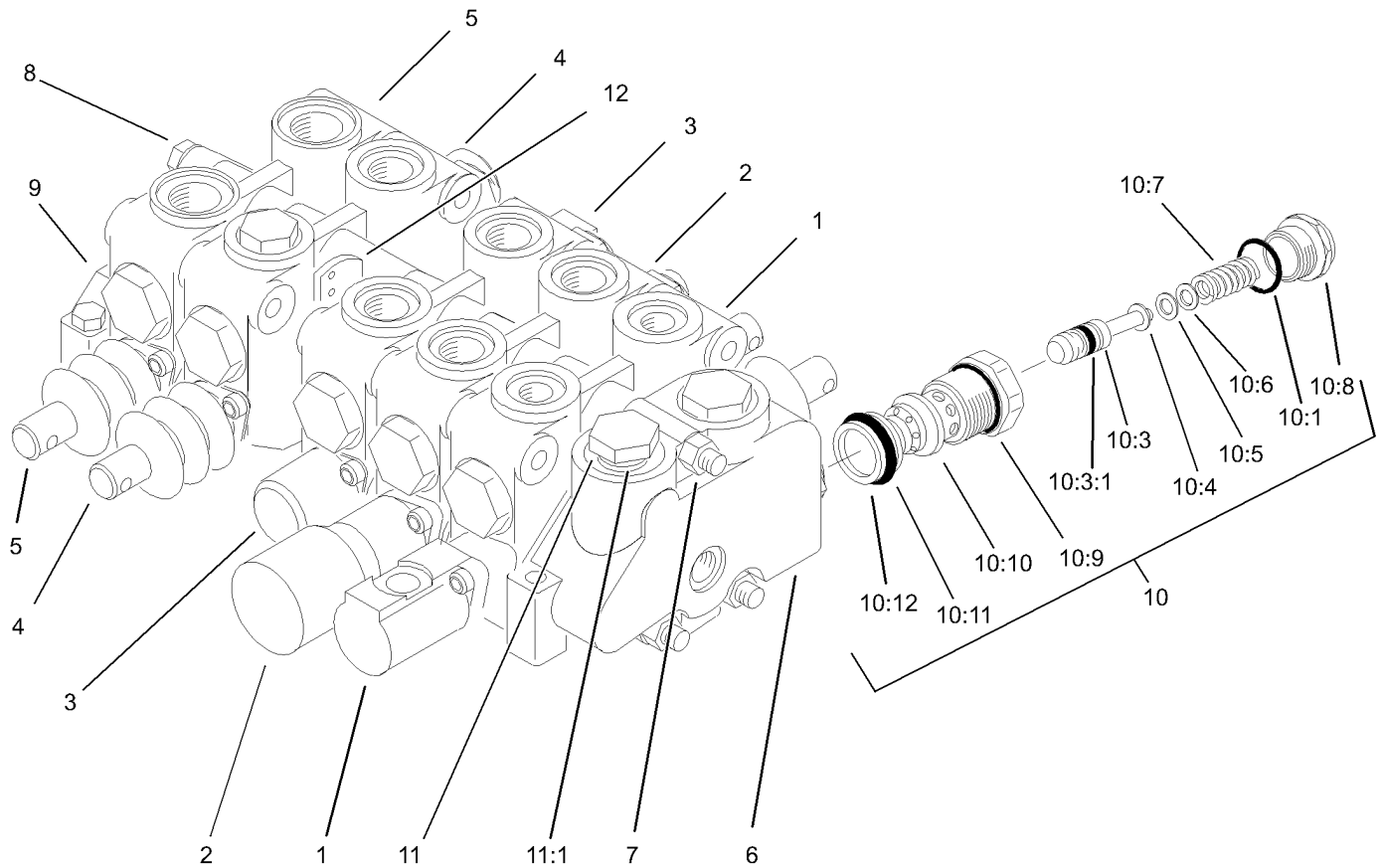
Ref	Part No.	Qty.	Description
11:2	237-42	1	O-Ring
14	98-2150	1	Hose-HYD
15	105-3800	1	Control Valve ASM
16	304-61	1	Clamp-Hose
17	32128-20	3	Nut-HF
19	83-1670	1	Fitting ASM
19:1	237-79	1	O-Ring
19:2	237-22	1	O-Ring
19:3	237-21	3	O-Ring
20	95-5986	1	Hose-HYD
22	340-16	1	Fitting-Hyd, 90
22:1	237-80	1	O-Ring
22:2	237-58	1	O-Ring
23	71-0990	1	Orifice
23:1	237-21	1	O-Ring
24	68-5260	1	Manifold-Tee
24:1	237-30	1	O-Ring
24:2	237-81	1	O-Ring
25	322-14	3	Screw-HH
26	63-4030	1	Tube-HYD
27	63-4020	1	Tube-HYD
28	340-101	1	Fitting-Hyd, 45 DEG
28:1	237-30	1	O-Ring
28:2	237-79	1	O-Ring



### Control Valve Installation Assembly (continued)

Ref	Part No.	Qty.	Description
29	340-137	1	Fitting
29:1	237-21	1	O-Ring
29:2	237-42	1	O-Ring
30	95-5987	1	Hose-HYD
32	12-3270	1	Screw
33	3234-4	1	Screw-HHF
34	98-0648	1	HYD Hose ASM
35	98-2153	1	HYD Hose ASM
36	2412-41	2	Clamp
37	3296-16	1	Nut-Lock, NI
38	3256-22	1	Washer-Flat
39	83-1890	2	Switch-Ball
40	38-0410	2	Nut-Hex
42	3290-379	2	Tie-Cable

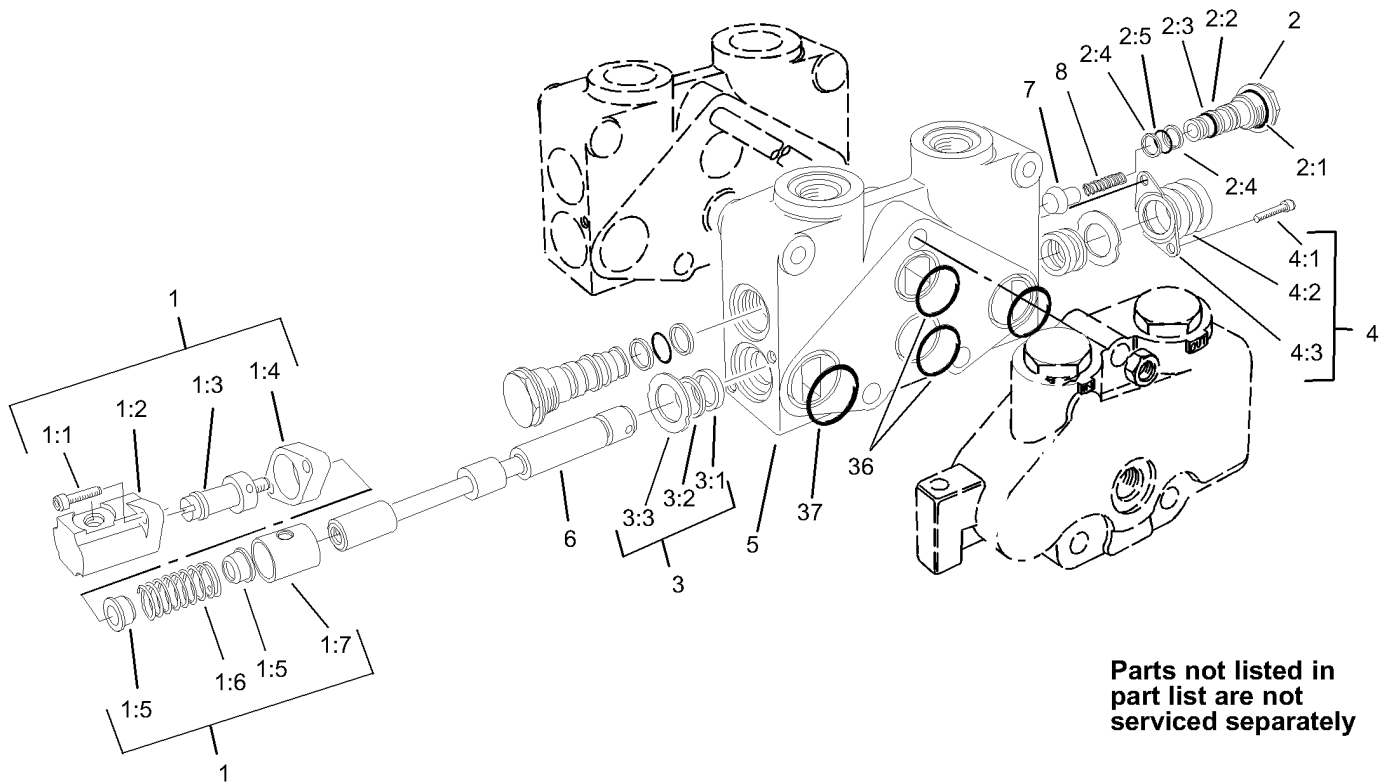
--	--	--	--



## Control Valve Assembly No. 105-3800

Ref	Part No.	Qty.	Description
1	105-3801	1	Section 1 ASM
2	105-3802	1	Section 2 ASM
3	105-3803	1	Section 3 ASM
4	105-3804	1	Section 4 ASM
5	93-1386	1	Section 5 ASM
6	353-772	1	Cover-Left
7	3217-7	3	Nut-Hex
8	353-853	3	Bolt
9	353-668	1	Plate-Cover
10	353-766	1	Cart-Relief
10:1	237-54	1	O-Ring
10:3	353-531	1	Poppet And Ring ASM
10:3:1	353-392	1	Ring-Piston
10:4	353-328	1	Shim (.040)
10:5	353-329	1	Shim (.020)
10:6	353-330	1	Shim (.010)
10:7	353-855	1	Spring
10:8	353-334	1	Cap-Relief
10:9	353-331	1	O-Ring
10:10	353-760	1	Relief-Body
10:11	353-758	1	O-Ring
10:12	353-952	1	Seal-Back-Up
11	353-721	2	Plug
11:1	237-54	1	O-Ring

Ref	Part No.	Qty.	Description
12	354-122	1	Disc-Seal
●13	92-2545	1	Spool Set Kit
●14	84-2190	1	Section Seal Kit

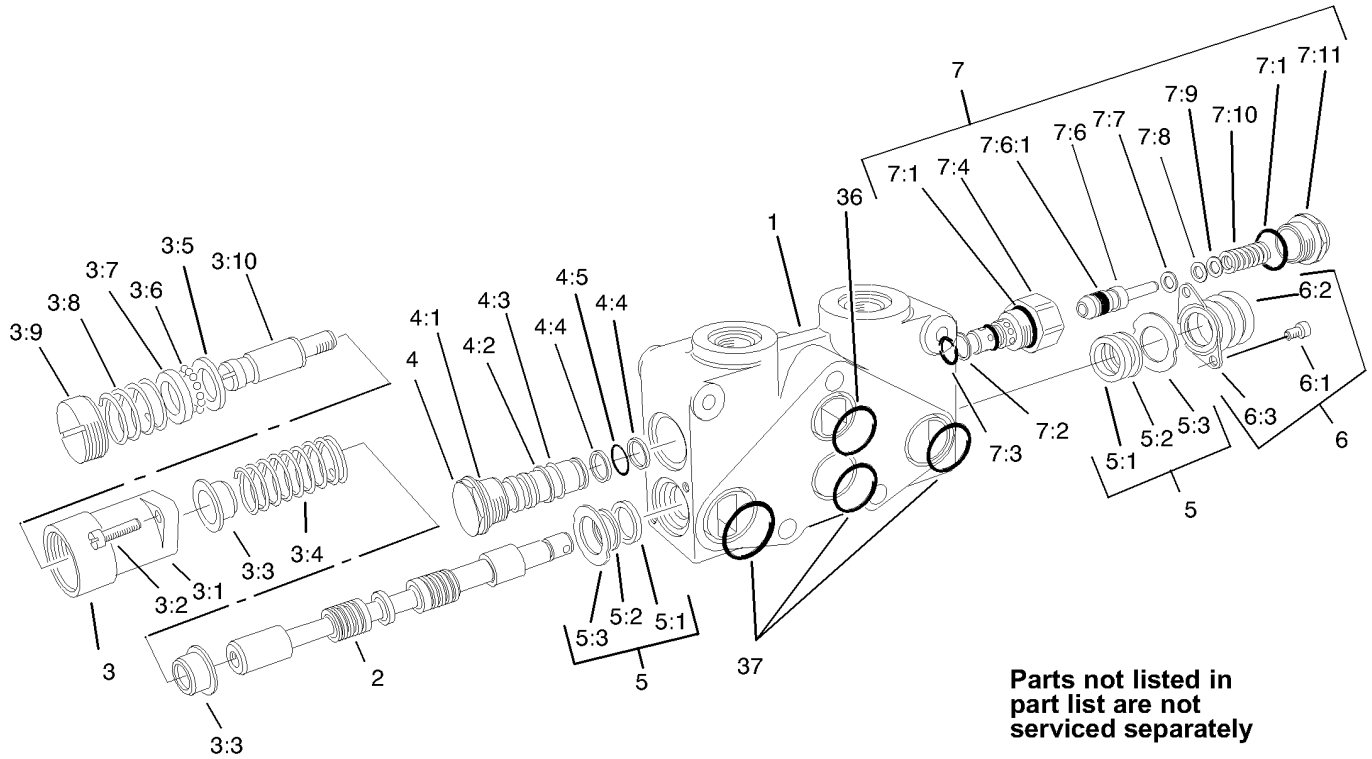


Parts not listed in part list are not serviced separately

### Section 1 Assembly No. 105-3801

Ref	Part No.	Qty.	Description
1	105-3807	1	Positioner-Interlock
1:1	3274-70	2	Screw-HSH
1:2	353-727	1	Bonnet-Special
1:3	104-7739	1	Spud-V20
1:4	353-733	1	Spacer-Bonnet
1:5	353-417	2	Collar-Stop
1:6	104-7741	1	Spring
1:7	353-728	1	Sleeve
2	353-481	2	Lift Check ASM
2:1	237-54	1	O-Ring
2:2	353-306	1	Washer-Backup
2:3	353-305	1	O-Ring
2:4	353-303	2	Washer-Backup
2:5	353-302	1	O-Ring
3	92-2548	2	Spool Set Kit
3:1	353-957	1	Cup-Seal
3:2	92-2546	1	Wiper-Seal
3:3	92-2547	1	Seal-Retainer
4	93-3652	1	Boot-Dust
4:1	3274-52	2	Screw-HSH
4:2	353-575	1	Boot
4:3	93-3651	1	Retainer-Boot
●5		1	Housing-V20c
●6		1	Spool-V20c

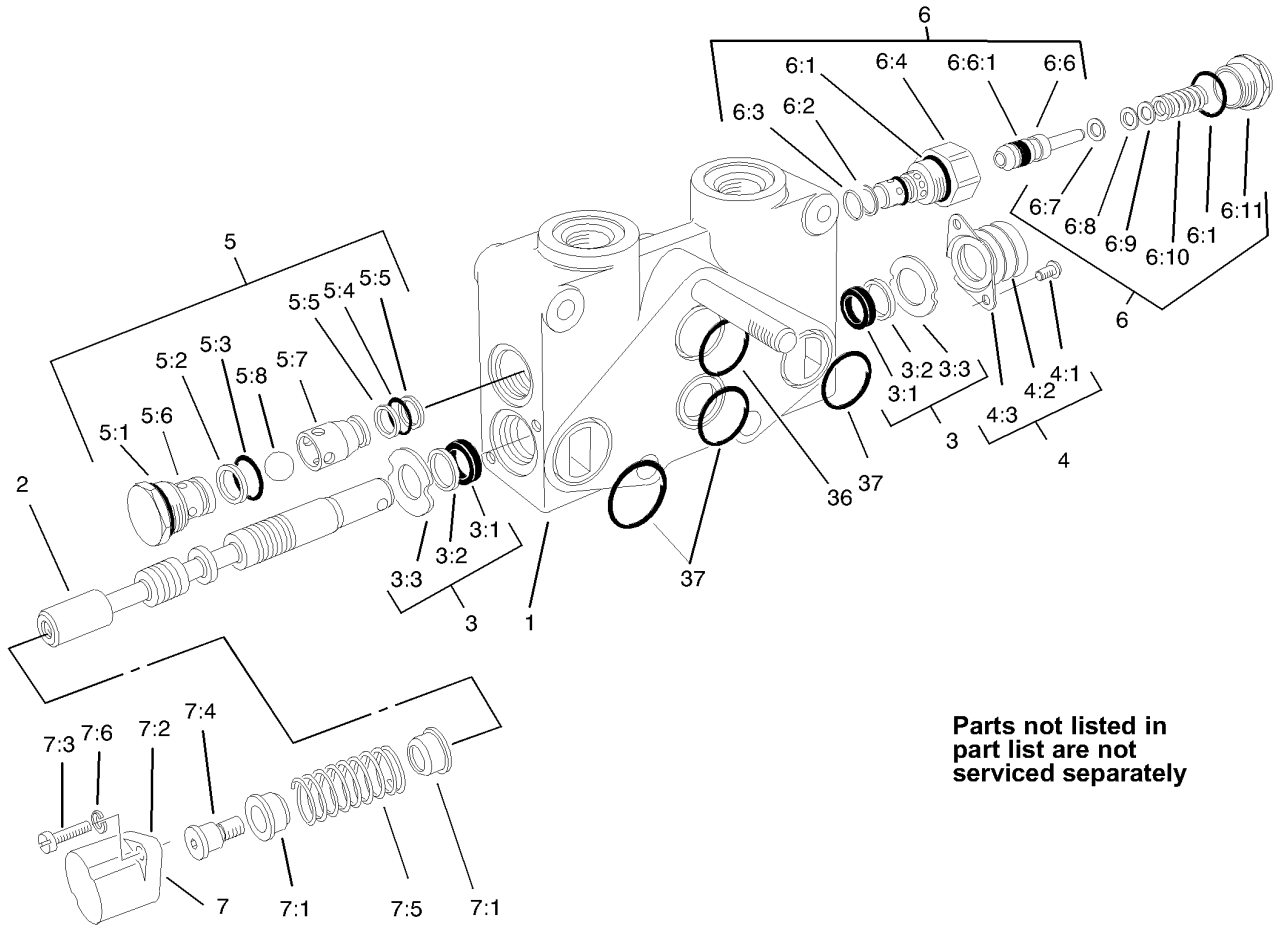
Ref	Part No.	Qty.	Description
7	353-301	1	Check-Lift, Poppet
8	353-304	1	Spring-Check, Lift
●36		2	O-Ring
●37		2	O-Ring



## Section 2 Assembly No. 105-3802

Ref	Part No.	Qty.	Description
② 1		1	Housing-V20t
② 2		1	Spool-V20
3	105-3806	1	Positioner
3:1	99-8181	1	Bonnet-R
3:2	3274-15	2	Screw-HSH
3:3	353-417	2	Collar-Stop
3:4	104-7741	1	Spring
3:5	354-29	1	Plate-Thrust
3:6	52-5880	12	Ball-Detent
3:7	42-2680	1	Race-Ball
3:8	104-7727	1	Spring-Detent
3:9	353-763	1	Cap-Adjustment
3:10	353-762	1	Spud-Out
4	353-481	1	Lift Check ASM
4:1	237-54	1	O-Ring
4:2	353-306	1	Washer-Backup
4:3	353-305	1	O-Ring
4:4	353-303	2	Washer-Backup
4:5	353-302	1	O-Ring
5	92-2548	2	Spool Set Kit
5:1	353-957	1	Cup-Seal
5:2	92-2546	1	Wiper-Seal
5:3	92-2547	1	Seal-Retainer
6	93-3652	1	Boot-Dust

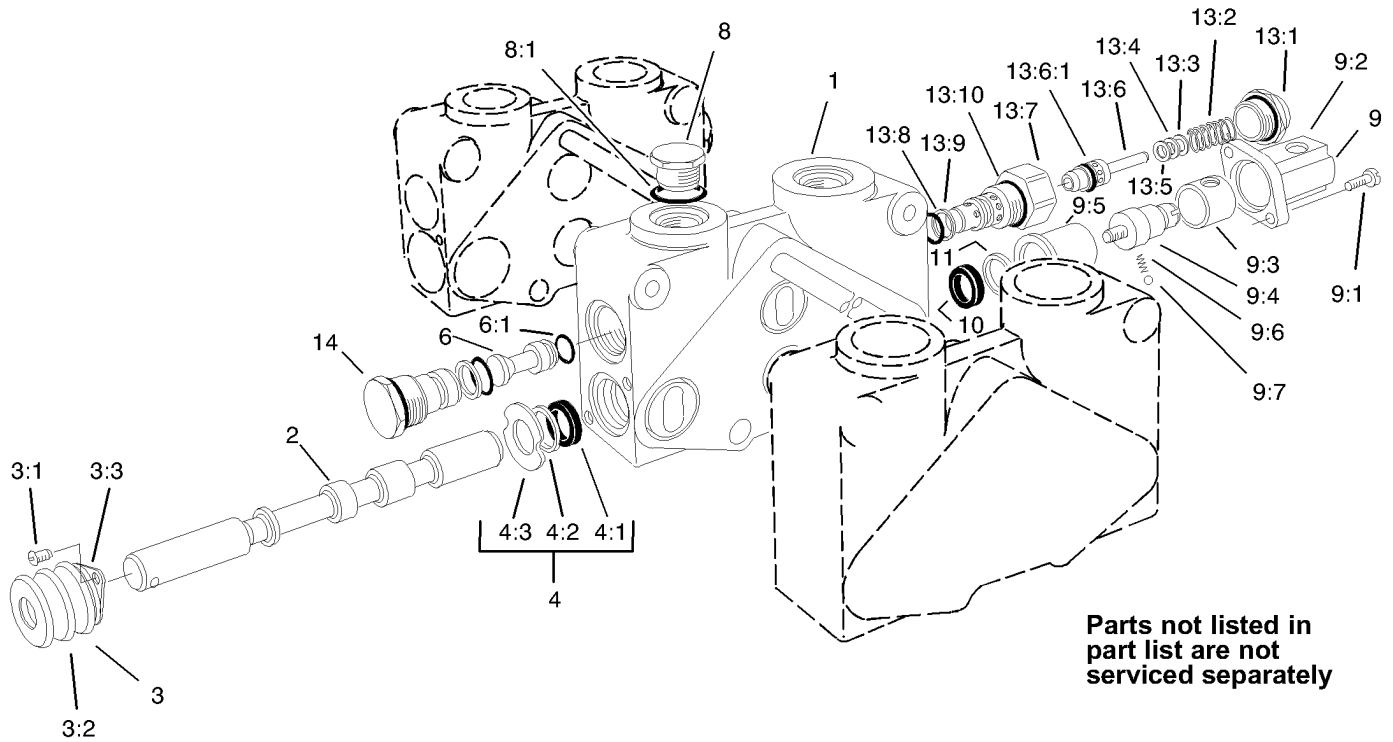
Ref	Part No.	Qty.	Description
6:1	3274-52	2	Screw-HSH
6:2	353-575	1	Boot
6:3	93-3651	1	Retainer-Boot
7	353-642	1	Cartridge-Relief
7:1	237-54	2	O-Ring
7:2	353-306	1	Washer-Backup
7:3	353-305	1	O-Ring
7:4	353-851	1	Body-Relief
7:6	353-531	1	Poppet And Ring ASM
7:6:1	353-392	1	Ring-Piston
7:7	353-328	1	Shim (.040)
7:8	353-329	1	Shim (.020)
7:9	353-330	1	Shim (.010)
7:10	353-398	1	Spring
7:11	353-334	1	Cap-Relief
② 36		1	O-Ring
② 37		3	O-Ring



### Section 3 Assembly No. 105-3803

Ref	Part No.	Qty.	Description
①		1	Housing-V20t
②		1	Spool-V20
3	92-2548	2	Spool Set Kit
3:1	353-957	1	Cup-Seal
3:2	92-2546	1	Wiper-Seal
3:3	92-2547	1	Seal-Retainer
4	93-3652	1	Boot-Dust
4:1	3274-52	2	Screw-HSH
4:2	353-575	1	Boot
4:3	93-3651	1	Retainer-Boot
5	354-129	1	Anticavitation Check ASM
5:1	237-54	1	O-Ring
5:2	353-306	1	Washer-Backup
5:3	353-305	1	O-Ring
5:4	353-302	1	O-Ring
5:5	353-303	2	Washer-Backup
5:6	353-483	1	Body-Check
5:7	353-484	1	Return-Ball, Check
5:8	353-737	1	Ball-Check
6	353-642	1	Cartridge-Relief
6:1	237-54	2	O-Ring
6:2	353-306	1	Washer-Backup
6:3	353-305	1	O-Ring
6:4	353-851	1	Body-Relief

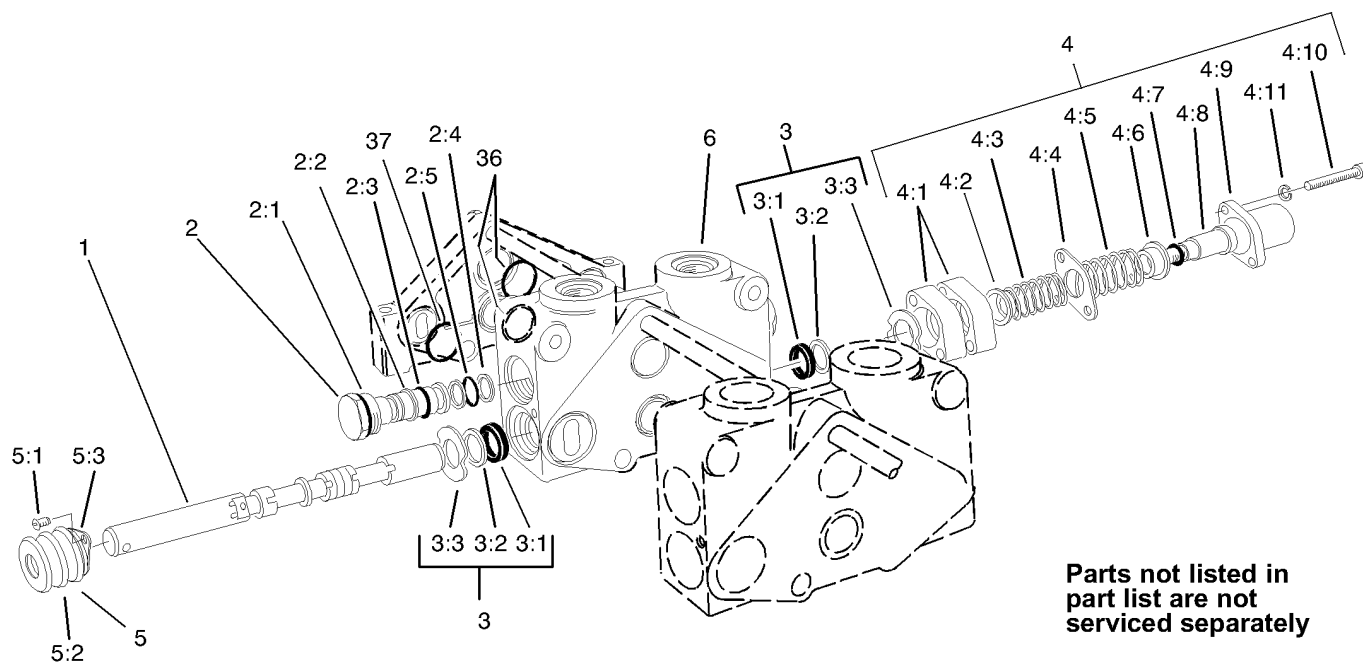
Ref	Part No.	Qty.	Description
6:6	353-531	1	Poppet And Ring ASM
6:6:1	353-392	1	Ring-Piston
6:7	353-328	1	Shim (.040)
6:8	353-329	1	Shim (.020)
6:9	353-330	1	Shim (.010)
6:10	353-398	1	Spring
6:11	353-334	1	Cap-Relief
7	105-3808	1	Positioner-Spring Return
7:1	353-417	2	Collar-Stop
7:2	99-6895	1	Bonnet
7:3	52-5900	2	Screw
7:4	52-5860	1	Collar-Spool
7:5	104-7741	1	Spring
7:6	3253-3	2	Washer-Lock
③6		1	O-Ring
③7		3	O-Ring



### Section 4 Assembly No. 105-3804

Ref	Part No.	Qty.	Description
②1		1	Housing-V20p
②2		1	Spool-V20
3	93-3652	1	Boot-Dust
3:1	3274-52	2	Screw-HSH
3:2	353-575	1	Boot
3:3	93-3651	1	Retainer-Boot
4	92-2548	1	Spool Set Kit
4:1	353-957	1	Cup-Seal
4:2	92-2546	1	Wiper-Seal
4:3	92-2547	1	Seal-Retainer
6	353-844	1	Plug
6:1	353-850	1	O-Ring
8	353-550	1	Plug-HYD
8:1	237-79	1	O-Ring
9	353-840	1	Switch Positioner Bonnet ASM
9:1	52-5900	2	Screw
9:2	353-847	1	Bonnet
9:3	353-849	1	Sleeve
9:4	353-846	1	Spud
9:5	353-845	1	Sleeve-Detent
9:6	353-730	1	Spring
9:7	353-731	2	Ball
10	353-957	1	Cup-Seal
11	353-958	1	Washer

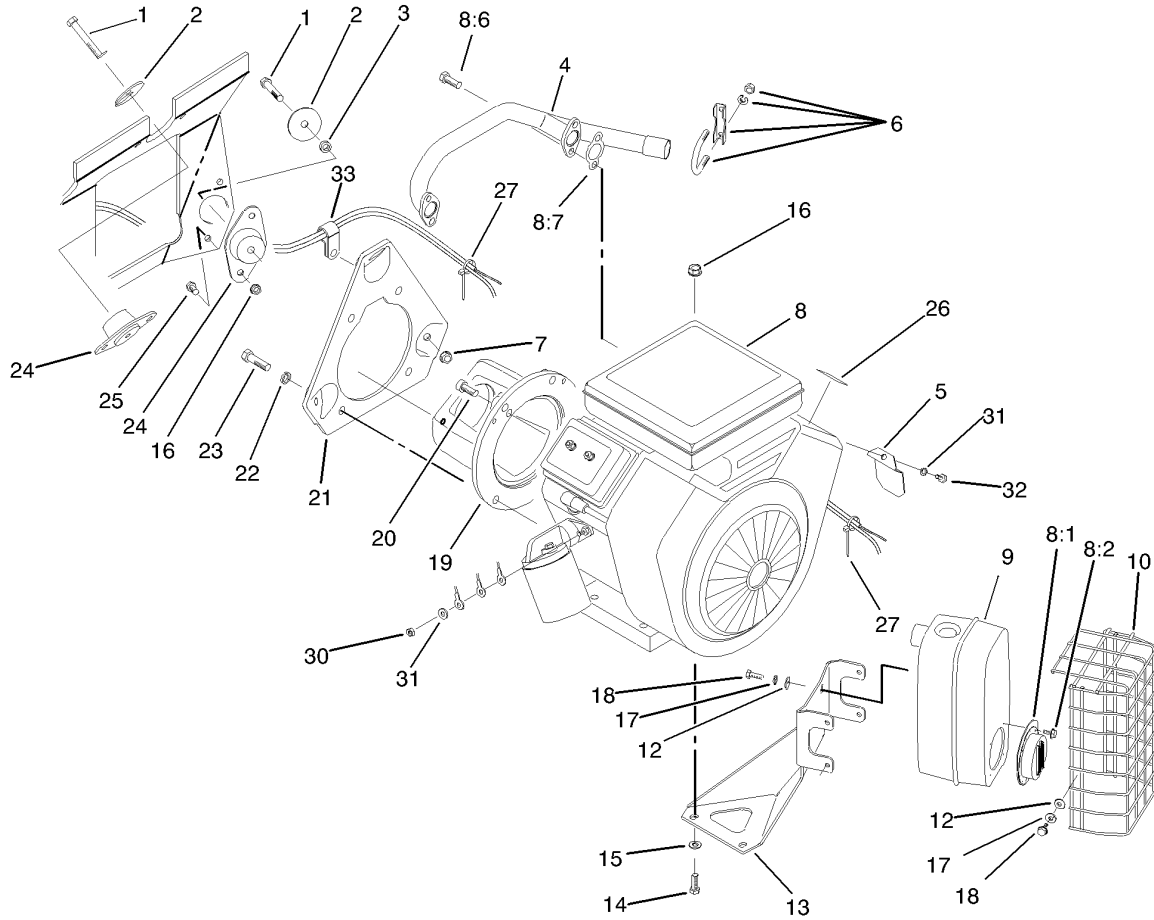
Ref	Part No.	Qty.	Description
13	354-140	1	Relief-Rcm
13:1	353-334	1	Cap-Relief
13:2	353-398	1	Spring
13:3	353-330	1	Shim (.010)
13:4	353-329	1	Shim (.020)
13:5	353-328	1	Shim (.040)
13:6	353-531	1	Poppet And Ring ASM
13:6:1	353-392	1	Ring-Piston
13:7	353-851	1	Body-Relief
13:8	353-305	1	O-Ring
13:9	353-306	1	Washer-Backup
13:10	237-54	2	O-Ring
14	353-953	1	Plug ASM



### Section 5 Assembly No. 93-1386

Ref	Part No.	Qty.	Description
1	94-5434	1	Spool
2	353-481	2	Lift Check ASM
2:1	237-54	1	O-Ring
2:2	353-306	1	Washer-Backup
2:3	353-305	1	O-Ring
2:4	353-303	2	Washer-Backup
2:5	353-302	1	O-Ring
3	92-2548	2	Spool Set Kit
3:1	353-957	1	Cup-Seal
3:2	92-2546	1	Wiper-Seal
3:3	92-2547	1	Seal-Retainer
4	353-833	1	Positioner ASM
4:1	353-733	2	Spacer-Bonnet
4:2	353-417	1	Collar-Stop
4:3	353-831	1	Spring
4:4	353-529	1	Plate-Retainer, Seal
4:5	92-3148	1	Spring-Traction
4:6	353-808	1	Collar-Spring
4:7	353-830	1	O-Ring
4:8	94-4248	1	Collar-Spool
4:9	99-6895	1	Bonnet
4:10	354-28	2	Screw-HS
4:11	3253-4	2	Washer-Lock
5	93-3652	1	Boot-Dust

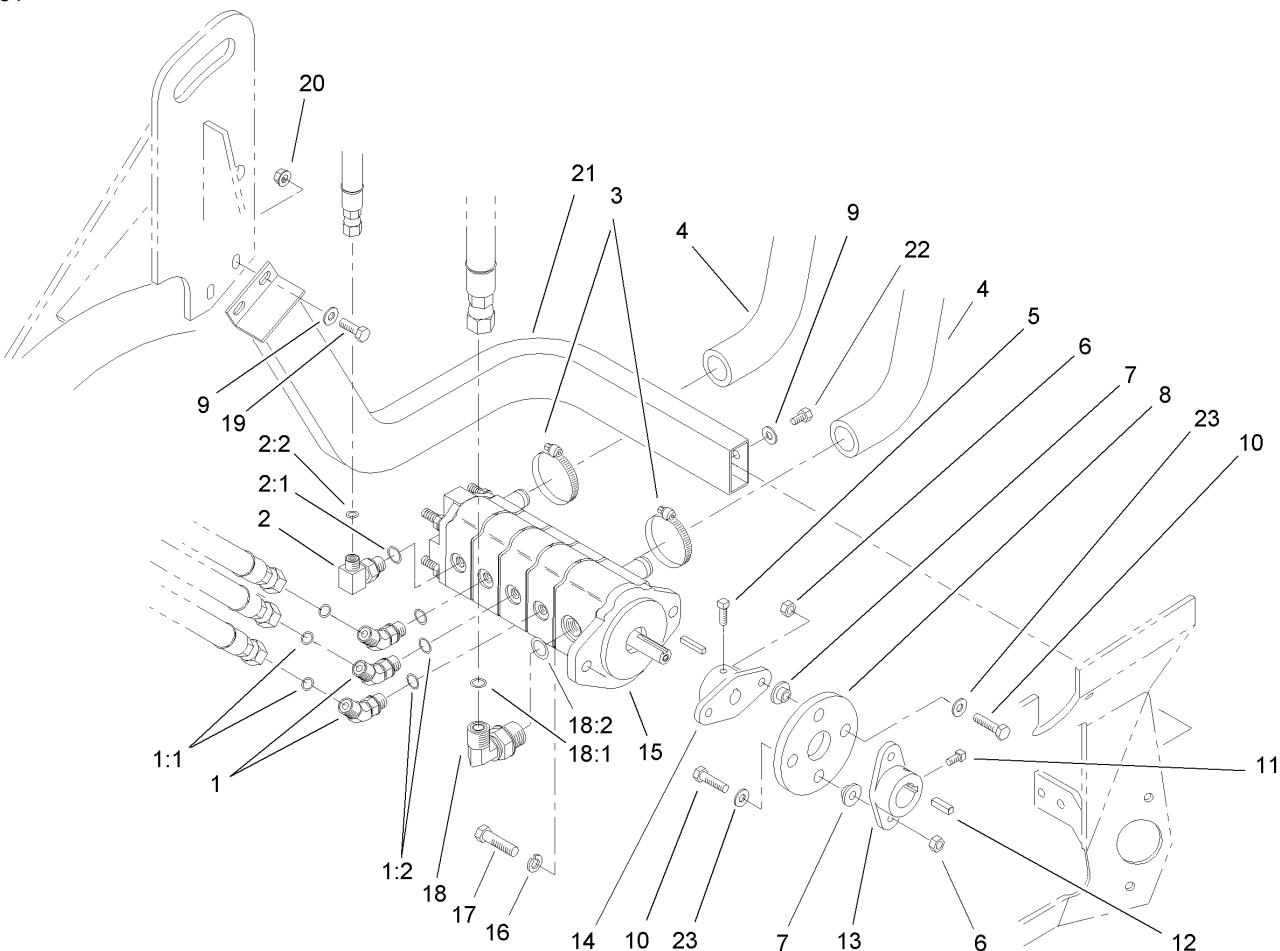
Ref	Part No.	Qty.	Description
5:1	3274-52	2	Screw-HSH
5:2	353-575	1	Boot
5:3	93-3651	1	Retainer-Boot
6		1	Housing-V20p
36		1	O-Ring
37		3	O-Ring



## Engine Installation Assembly

Ref	Part No.	Qty.	Description
1	323-12	3	Screw-HH
2	83-1040	3	Washer-Flat
3	83-1050	2	Spacer
4	83-1080	1	Exhaust Manifold ASM
5	83-2310	1	Shield-Regulator
6	2112-11	1	Clamp-Muffler
7	3290-357	3	Nut-HHF
8	107-9525	1	Engine-18hp, Vanguard
28:1		1	Deflector-Exhaust
28:2		4	Screw-HH
28:6		4	Screw-HHF
28:7		2	Gasket-Manifold, Exhaust
9	98-0616	1	Muffler ASM
10	83-1400-03	1	Shield-Muffler
12	3256-1	8	Washer-Flat
13	83-1630-03	1	Bracket-Support, Muffler
14	322-8	2	Screw-HH
15	3256-23	2	Washer-Flat
16	32128-20	8	Nut-HF
17	3253-3	8	Washer-Lock
18	49-2040	8	Screw-Tapping
19	83-1060-03	1	Adapter-Pump
20	3274-7	2	Screw-HSH
21	85-8120-03	1	Plate-Mount, Engine

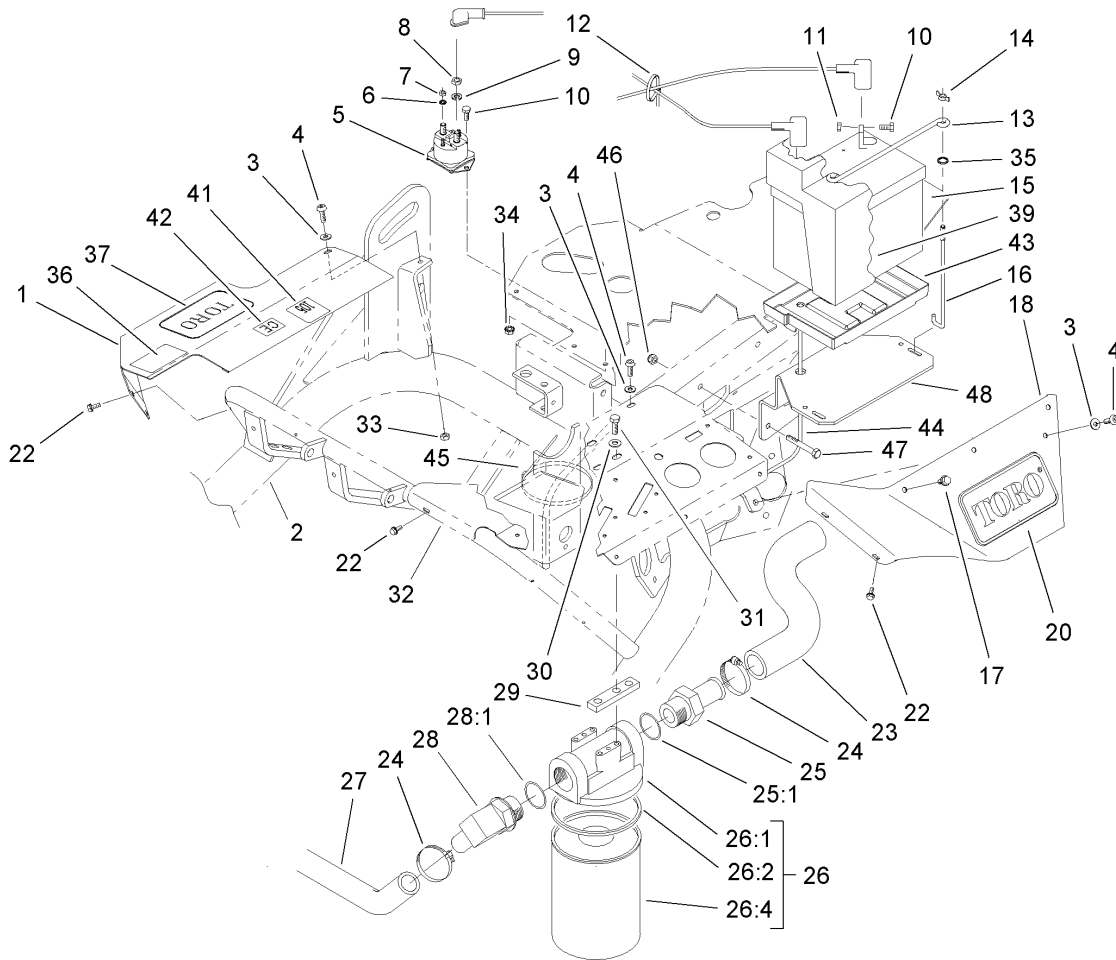
Ref	Part No.	Qty.	Description
22	3253-6	4	Washer-Lock
23	324-7	4	Screw-HH
24	83-1030	3	Mount-Engine
25	322-3	6	Screw-HH
26	93-8069	1	Decal-Surface, Hot
27	3290-379	2	Tie-Cable
30	43-2830	1	Nut-Hex
31	43-5930	2	Washer-Spring
32	33113-016	1	Screw-HH
33	2412-81	1	Clamp-R



## Hydraulic Pump Installation Assembly

Ref	Part No.	Qty.	Description
1	340-87	3	Fitting-Hyd, 45 DEG
1:1	237-22	1	O-Ring
1:2	237-42	1	O-Ring
2	340-82	1	Adapter
2:1	237-42	1	O-Ring
2:2	237-21	1	O-Ring
3	2412-34	2	Clamp-Hose
4	95-5966	2	Hose-Pump Inlet
5	3241-6	2	Screw-SQH
6	3296-29	4	Nut-Lock, NI
7	27-6600	4	Spacer-Coupling
8	44-2230	1	Coupling-Rubber
9	3256-23	4	Washer-Flat
10	322-6	4	Screw-HH
11	3241-2	2	Screw-SQH
12	10-7070	1	Key-Square
13	27-1960	1	Hub-Engine
14	27-1970	1	Hub-Pump
15	107-2567	1	Pump-Gear, 5 Section
●15:1	107-2568	1	Seal Kit
16	3253-21	2	Washer-Lock
17	323-7	2	Screw-HH
18	340-105	1	Fitting-Hyd, 90 DEG
18:1	237-80	1	O-Ring

Ref	Part No.	Qty.	Description
18:2	237-30	1	O-Ring
19	322-4	2	Screw-HH
20	32128-20	2	Nut-HF
21	106-9077-01	1	Guard ASM
22	322-1	2	Screw-HH
23	3256-3	4	Washer-Flat

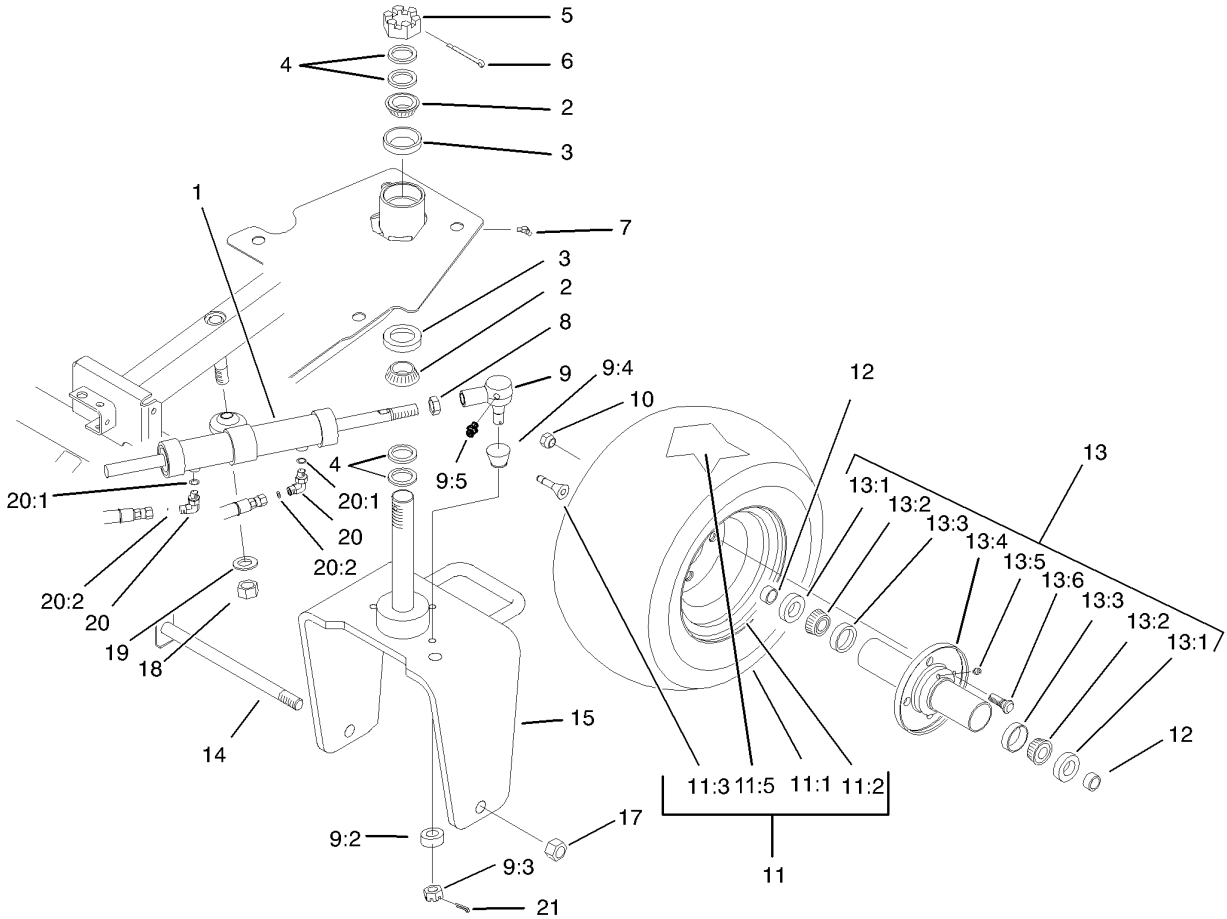


### Frame Assembly

Ref	Part No.	Qty.	Description
1	94-2694-01	1	Cover-RH ASM
2	106-6365-01	1	Frame ASM
3	3256-1	3	Washer-Flat
4	3274-69	3	Screw-HSBH
5	28-4210	1	Solenoid
6	3254-1	2	Washer-Lock, Int
7	3219-14	2	Nut-Hex
8	3218-13	2	Nut-Jam
9	3253-4	2	Washer-Lock
10	321-3	4	Screw-HH
11	3217-5	2	Nut-Hex
12	3290-378	1	Tie-Cable
13	100-6434	1	Rod-Battery, Hold Down
14	32103-22	2	Nut-Wing
15	104-8162	1	Battery
16	100-6435	2	Post-Battery
17	46-8560	3	Screw-HHF
18	83-0840-01	1	Shield-Cover, Valve
20	105-9751	1	Decal
22	32104-116	5	Screw
23	95-7119	1	Hose-Line, Return
24	2412-34	3	Clamp-Hose
25	353-563	1	Fitting-Hyd, Straight
25:1	237-101	1	O-Ring

Ref	Part No.	Qty.	Description
●26		1	Filter And Head ASM
26:1	44-5560	1	Head-Filter, Oil
26:2	72-3850	1	Seal-Filter, Oil
26:4	74-3570	1	Filter
27	68-5880	1	Hose-HYD
28	353-564	1	Fitting-90 DEG
28:1	237-101	1	O-Ring
29	27-2380	2	Spacer
30	3256-23	4	Washer-Flat
31	322-4	4	Screw-HH
32	83-0830-01	1	Panel-Control, Upper
33	3296-16	3	Nut-Lock, NI
34	32149-2	2	Nut-Keps
35	237-143	2	O-Ring
36	93-8065	1	Decal-Traction
37	67-1300	1	Decal
39	106-9062	1	Cover-Battery
41	105-4674	1	Decal-Noise
42	93-7252	1	Decal
43	106948	1	Tray-Battery
44	98-0601	1	Tube-Drain, Battery
45	3290-379	1	Tie-Cable
46	3296-29	2	Nut-Lock, NI
47	322-11	2	Screw-HH



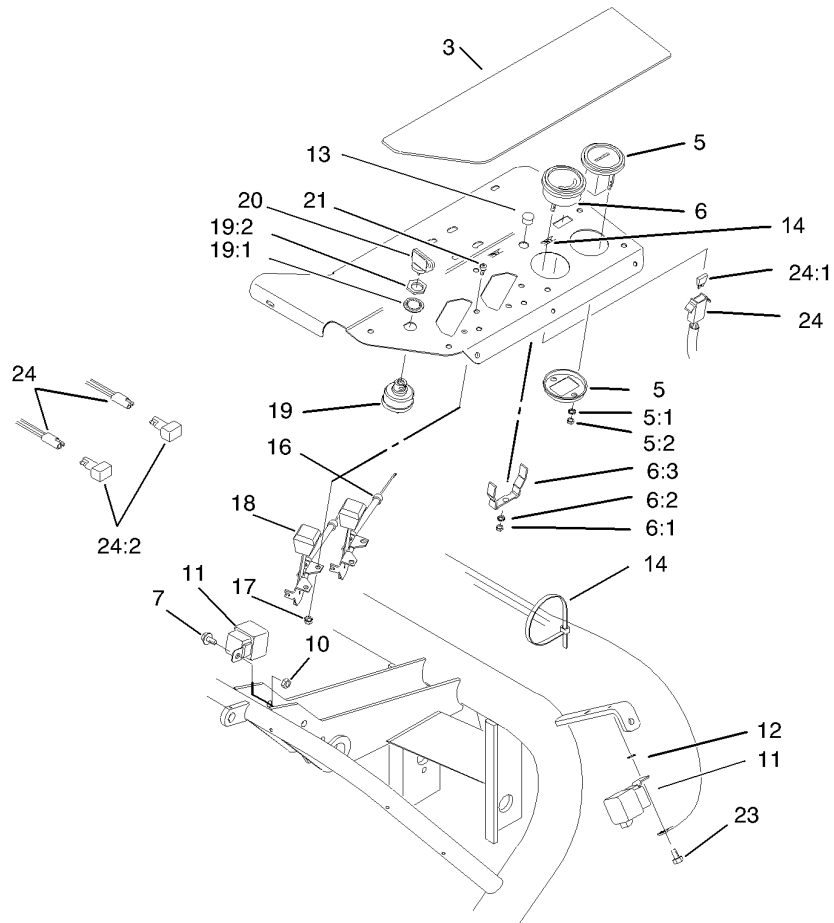


## Rear Wheel Assembly

Ref	Part No.	Qty.	Description
1	83-2330	1	Cylinder-Steering
2	254-70	2	Bearing-Cone
3	254-61	2	Bearing-Cup
4	18-6320	4	Washer-Steering
5	32136-9	1	Nut-Hex, Slotted
6	3272-37	1	Pin-Cotter
7	302-11	1	Fitting-Lube, 45 DEG
8	84-5300	1	Nut-Jam
9	107-2553	1	Rod End ASM
9:2	98-2389	1	Spacer-Link, Pull
9:3	32136-2	1	Nut-SHH
9:4	106-6896	1	Seal
9:5	302-5	1	Fitting-Grease
10	242-50	4	Nut-Lug
11		1	Wheel & Tire ASM
11:1	28-3680	1	Tire
11:2	217-60	1	Rim
11:3	232-27	1	Stem-Valve
11:5	232-37	1	Tube
12	74-3730	2	Spacer-Spindle, Rear
13	72-9710	1	Hub-Tire
13:1	253-111	2	Seal-Oil
13:2	254-78	2	Bearing-Cone
13:3	254-79	2	Bearing-Roller, Cup

Ref	Part No.	Qty.	Description
13:4	75-9440	1	Hub ASM
13:5	302-11	1	Fitting-Lube, 45 DEG
13:6	10-6830	4	Stud-Type, Drive
14	5-3934	1	Bolt-Caster
15	95-5952-01	1	Fork-Caster ASM
17	3296-67	1	Nut-Lock NI
18	3217-12	1	Nut-Hex
19	3256-28	1	Washer-Flat
20	340-132	2	Fitting-Hyd, 90 DEG
20:1	237-78	1	O-Ring
20:2	237-21	1	O-Ring
21	3272-12	1	Pin-Cotter

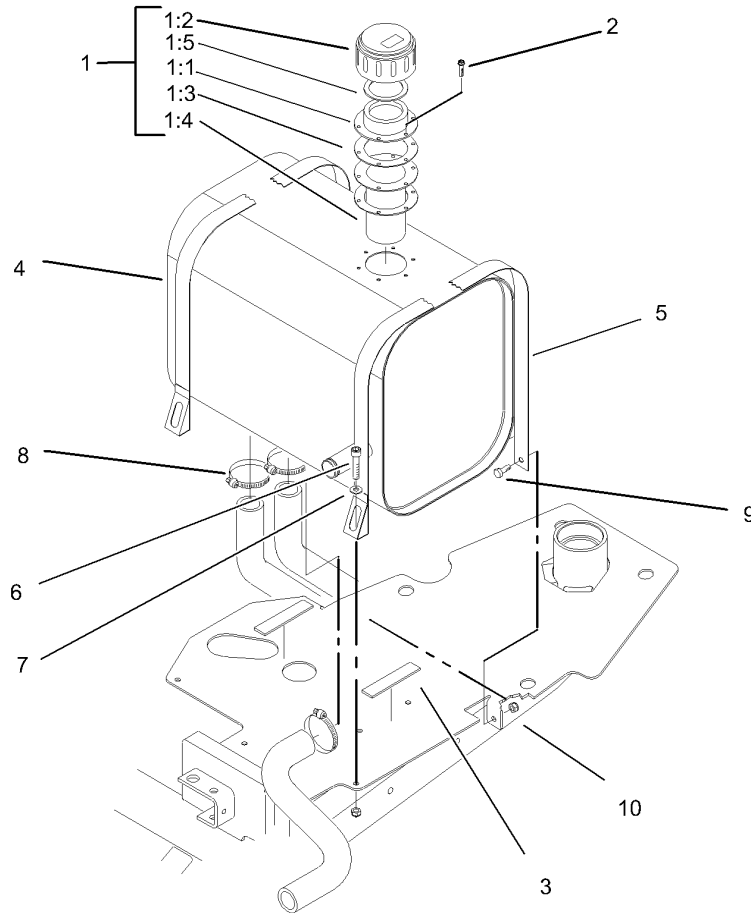




### Control Panel Assembly

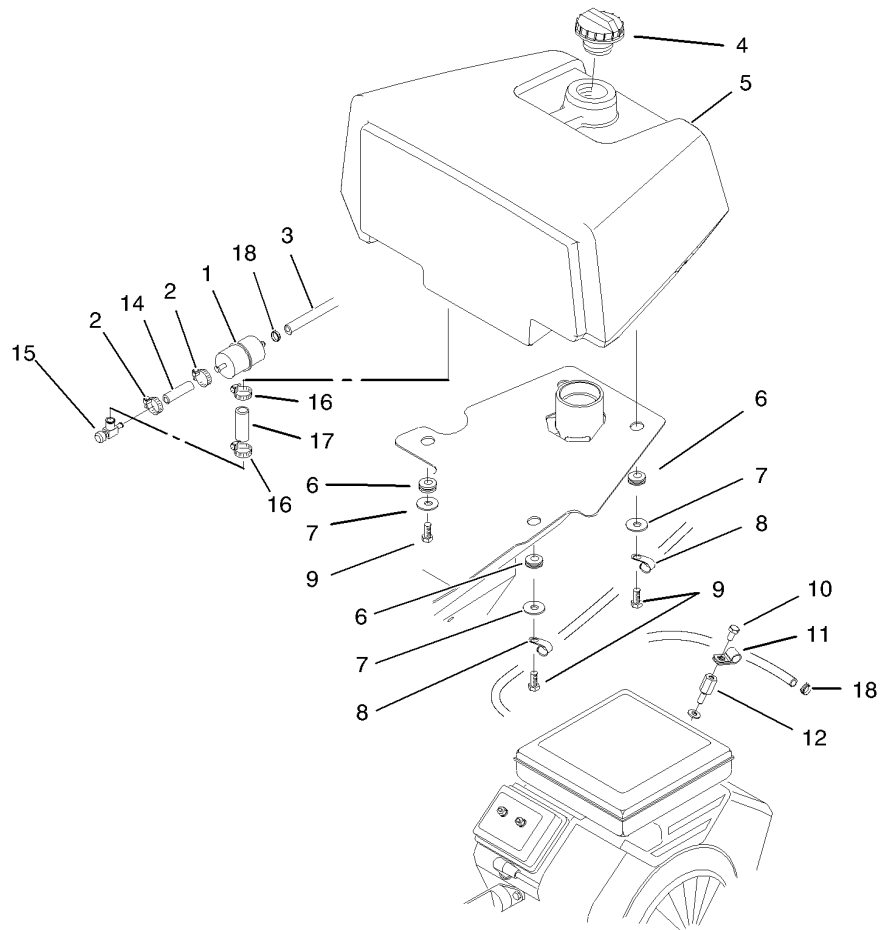
Ref	Part No.	Qty.	Description
3	107-2554	1	Decal-Panel, Control
5	66-2950	1	Gauge-Hourmeter
5:1	3255-20	2	Washer-Lock
5:2	3217-25	2	Nut-Hex
6	98-2160	1	Voltmeter
6:1	3217-27	1	Nut-Hex
6:2	3255-25	1	Washer-Lock
6:3	78-0080	1	Clamp-Mounting
7	321-4	1	Screw-HH
10	3296-16	1	Nut-Lock, NI
11	70-1480	2	Relay
12	3255-7	1	Washer-Lock/ext
13	2410-64	1	Plug-Button
14	3290-378	3	Tie-Cable
16	83-0040	1	Control-Choke
17	3296-12	4	Nut-Lock
18	83-0030	1	Control-Throttle
19	88-9830	1	Key Switch ASM
19:1	3254-5	1	Washer-Tooth
19:2	218-461	1	Nut-HH
20	63-8360	2	Key-Ignition
21	3290-134	4	Screw
23	32104-95	1	Screw-HWH
24	104-2058	1	Harness-Wire, Main

Ref	Part No.	Qty.	Description
24:1	218-578	1	Fuse-10 Amp
24:2	100-4918	2	Diode
●24:3	106-2790	1	Link-Fusible
●24:4	106-2791	1	Link-Fusible



### Hydraulic Reservoir Assembly

Ref	Part No.	Qty.	Description
1	62-2570	1	Filler Cap ASM
1:1	353-962	1	Cap ASM
1:2	353-961	1	Flange
1:3	353-963	2	Gasket
1:4	62-2610	1	Strainer-Cap, Filler
1:5	76-1720	1	Gasket-Cap, Filler
2	32144-34	6	Screw-Forming, Thread
3	95-5951	2	Strip-Seal
4	95-7118	1	Tank-Hydraulic
5	27-2400	2	Reservoir Strap ASM
6	3274-19	2	Screw-HSH
7	3256-22	2	Washer-Flat
8	2412-34	3	Clamp-Hose
9	321-3	2	Screw-HH
10	3296-16	4	Nut-Lock, NI



## Fuel Tank Assembly

Ref	Part No.	Qty.	Description
1	94-2690	1	Filter-Fuel
2	2412-108	2	Clamp-Worm
3	83-2041	1	Hose-Fuel
4	93-7170	1	Cap-Fuel
5	105-8266	1	Tank-Fuel
6	240-11	4	Bushing-Flange
7	63-8410	4	Washer
8	2412-41	3	Clamp
9	323-6	4	Screw-HH
10	33113-012	1	Screw-HH
11	2412-94	1	Clamp
12	106-4616	1	Screw-Spacer
14	83-2040	1	Hose-Fuel
15	83-1390	1	Valve-Shut-Off, Fuel
16	2412-36	2	Clamp-Hose
17	56-2230	1	Hose-Fuel
18	2412-98	2	Clamp

--	--	--	--

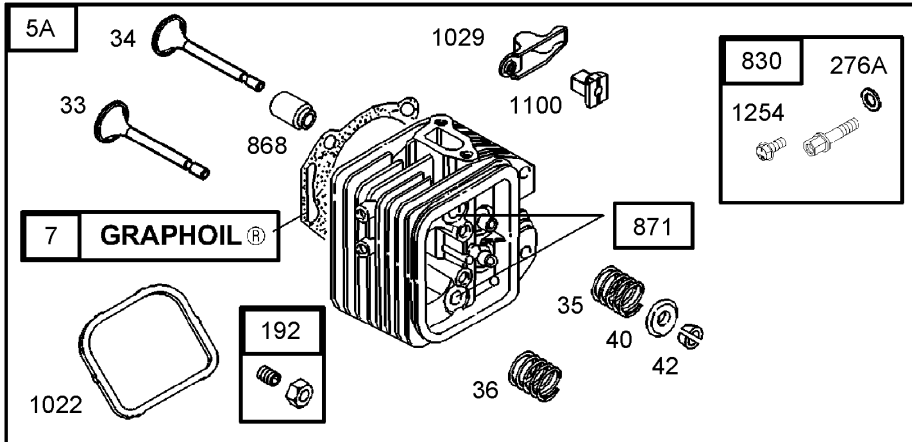
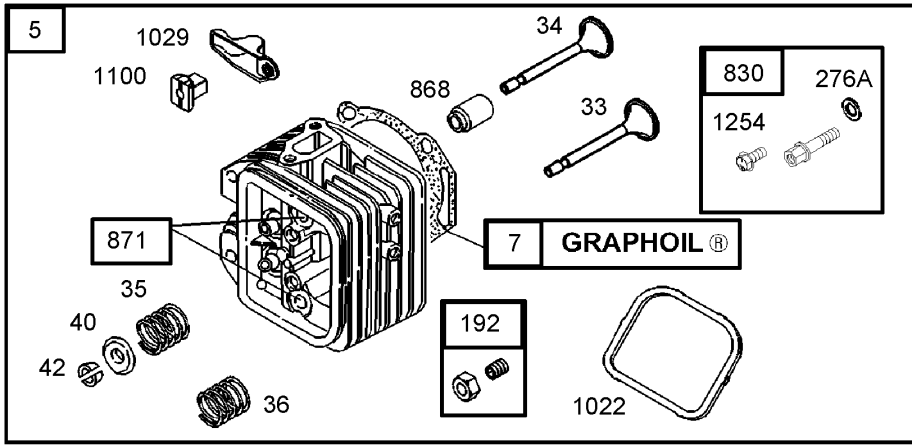












Assemblies include all parts shown in frames.

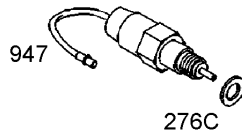
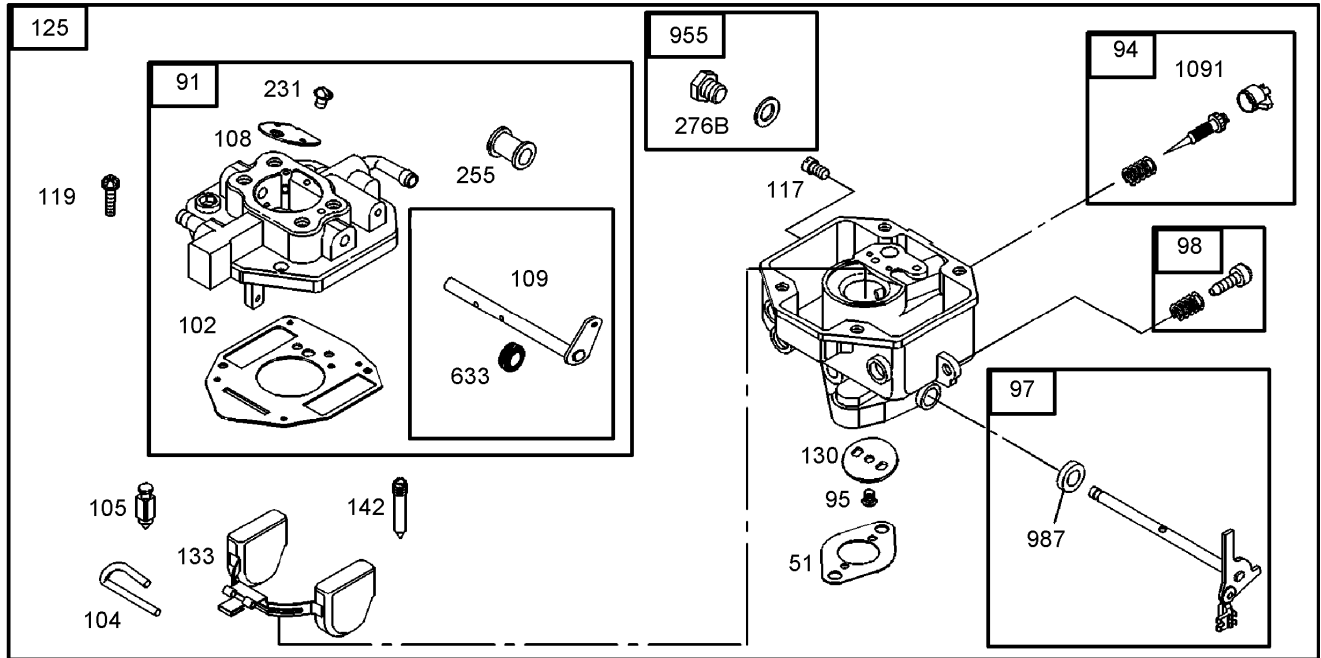
## Cylinder Head Assembly No. 1 Briggs and Stratton 350447-1332-E1

Ref	Part No.	Qty.	Description
5	809185	1	Cylinder Head (No. 1)(Used After Date Code 01120200)
5A	809186	1	Cylinder Head (No. 2)(Used After Date Code 01120200)
57	690888	1	Gasket-Head, Cylinder
13	692059	1	Screw
33	807681	1	Valve-exhaust
34	807680	1	Valve-intake
35	692084	1	Spring-valve
36	692084	1	Spring-valve
40	692058	1	Retainer-valve
42	807683	1	Keeper-valve
45	690977	1	Valve Tappet
192	807623	1	Adjuster-arm, Rocker
276A	807085	1	Washer-sealing
337	496018	1	Plug-spark
383	19374	1	Wrench-Spark Plug
613	691902	1	Screw (Exhaust Muffler)
635	692076	1	Boot-Spark Plug
830	809157	1	Stud-arm, Rocker
868	691963	1	Seal-valve
871	692057	1	Bushing-guide, Valve
883	691613	1	Gasket-exhaust

Ref	Part No.	Qty.	Description
5 1022	806039	1	Gasket-cover, Rocker
1026	691836	1	Rod-push
6	691758	1	Rod-push
1029	691543	1	Arm-Rocker
1100	690973	1	Pivot-arm, Rocker
1254	807084	1	Screw







Assemblies include all parts shown in frames.

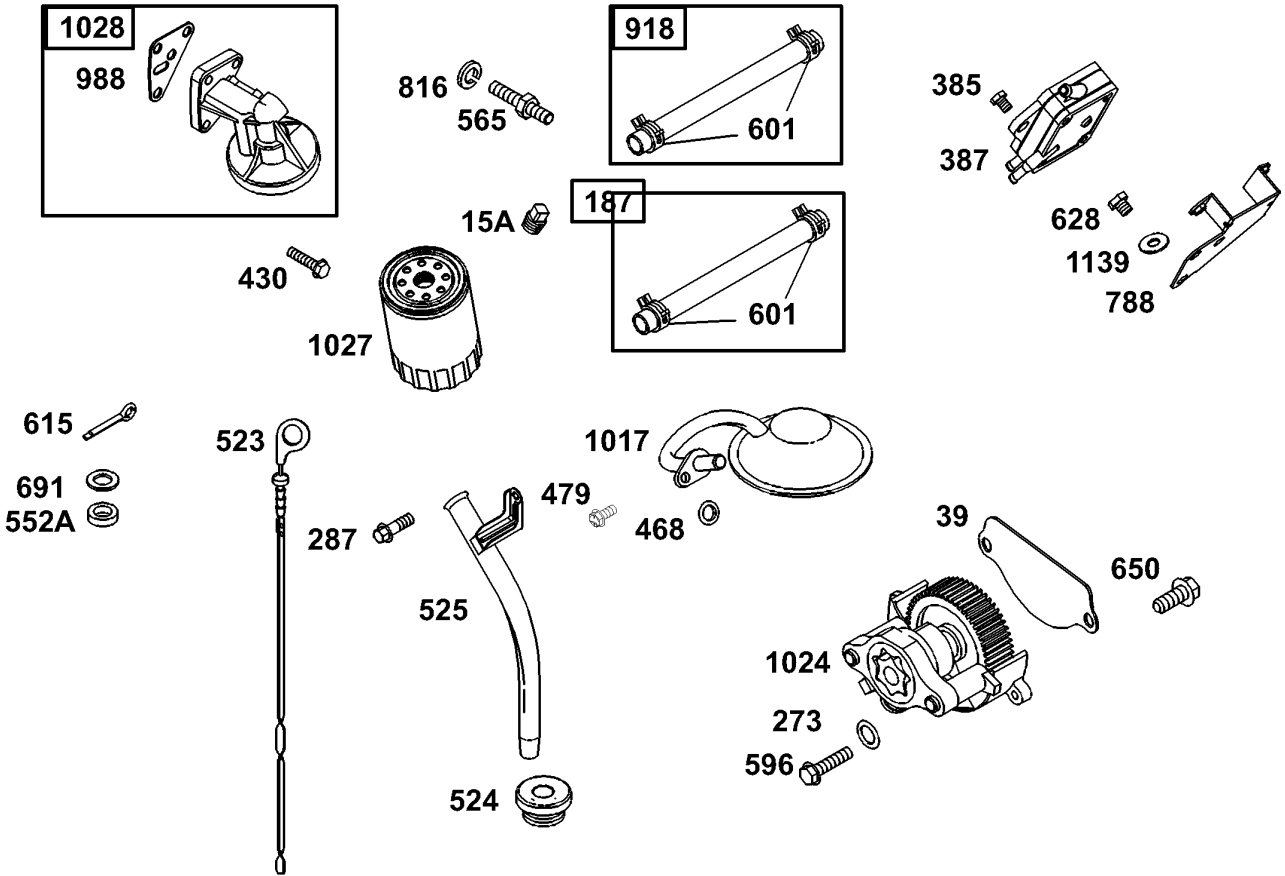
## Carburetor Assembly Briggs and Stratton 350447-1332-E1

Ref	Part No.	Qty.	Description
⑤⑤1	691694	1	Gasket-Intake
⑥91	809208	1	Upper Carburetor Body ASM
④⑥94	808257	1	Idle Mixture Kit
④⑥95	690718	1	Screw (Throttle Valve)
⑥97	808973	1	Throttle Shaft Kit
⑥98	808981	1	Idle Speed Kit
④⑥102	692077	1	Gasket-body, Carburetor
④⑥104	690723	1	Pin-hinge, Float
④⑥105	692078	1	Valve-needle, Float
⑥108	690719	1	Valve-choke
⑥109	809096	1	Shaft-Choke
④⑥117	808406	1	Jet-Main (Standard)
⑥119	690720	1	Screw (Upper To Lower Body)
⑥125	809209	1	Carburetor
⑥130	690726	1	Valve-throttle
⑥133	806961	1	Float-carburetor
④⑥142	690725	1	Nozzle-Carburetor
④⑥231	690718	1	Screw (Throttle Valve)
④⑥255	690721	1	Bushing-Choke Shaft
④⑥276B	690724	1	Seal-o Ring (Carburetor Plug)
⑥276C	806137	1	Washer-sealing
④⑥633	690722	1	Seal-shaft, Choke/throttle
⑥947	692094	1	Solenoid-fuel
⑥955	807723	1	Plug-carburetor

Ref	Part No.	Qty.	Description
④⑥987	806131	1	Seal-shaft, Choke/throttle
④⑥1091	691516	1	Cap-limiter







Assemblies include all parts shown in frames.

## Fuel Pump, Oil Pump and Dipstick Assembly Briggs and Stratton 350447-1332-E1

Ref	Part No.	Qty.	Description
ⓐ 15A	690283	1	Plug-oil
ⓐ 39	690745	1	Deflector-oil
ⓐ 187	691050	1	Fuel Line (Cut To Required Length)
ⓐ ⓐ 273	690681	1	Seal-o Ring (Oil Pump)
ⓐ 287	692062	1	Screw (Dipstick Tube)
ⓐ 385	693169	1	Screw (Fuel Pump)
ⓐ 387	808969	1	Pump-Fuel
ⓐ 430	690679	1	Screw (Oil Filter Adapter)
ⓐ ⓐ 468	690690	1	Seal-o Ring (Oil Pump Screen)
ⓐ 479	807084	1	Screw (Rocker Arm Stud)
ⓐ 523	693175	1	Dipstick
ⓐ 524	693172	1	Seal-tube, Dipstick
ⓐ 525	693174	1	Tube-Dipstick
ⓐ 552A	690701	1	Bushing-crank, Governor
ⓐ 565	690682	1	Stud (Oil Filter Adapter)
ⓐ 596	691492	1	Screw (Oil Pump)
ⓐ 601	691038	1	Clamp-hose
ⓐ 615	691550	1	Retainer-shaft, Governor
ⓐ 628	692062	1	Screw (Dipstick Tube)
ⓐ 650	692539	1	Screw (Cylinder Head Cover)
ⓐ 691	690680	1	Seal-shaft, Governor
ⓐ 788	691559	1	Bracket-pump, Fuel
ⓐ 816	690706	1	Washer (Oil Filter Adapter)

Ref	Part No.	Qty.	Description
ⓐ 918	393815	1	Line-vacuum (Cut To Required Length)
ⓐ ⓐ 988	692063	1	Gasket-adapter, Oil Filter
ⓐ 1017	690900	1	Screen-pump, Oil
ⓐ 1024	693185	1	Pump-oil
ⓐ 1027	492932	1	Filter-oil
ⓐ 1028	808235	1	Adapter-filter, Oil
ⓐ 1139	806497	1	Washer (Fuel Pump Bracket)















# Attachments and Accessories

## For 04356 - Greensmaster 3100 2 Wheel Drive

<b>Product Name</b>	<b>Model/Part</b>
Variable Traction Control Kit .....	04422
Dethatching Reel .....	04493
Spiker Kit .....	04494
Tri-Roller Kit .....	04495
8-Blade DPA Reel Mower .....	04610
11-Blade DPA Reel Mower .....	04611
Three-Wheel Drive Kit .....	100-6441
Light Kit .....	105-3848
Gear Pump Kit .....	107-2577
Tire .....	231-124
Reel Shutoff Kit .....	28-2150
Arm Rest Kit .....	30707
Backlapping Kit .....	92-9656

